



JACOBSEN[®]

TECHNICAL MANUAL

Safety, Operation, Parts, Maintenance, Service

Model:
744865C REN-O-THIN



WARNING: If incorrectly used this machine can cause severe injury. Those who use and maintain this machine should be trained in its proper use, warned of its dangers and should read the entire manual before attempting to set up, operate, adjust or service the machine.

TEXTRON
GOLF, TURF & SPECIALTY PRODUCTS

4124530 REV A

**CALIFORNIA
Proposition 65 Warning**

Diesel engine exhaust and some of its constituents are known to the State of California to cause cancer, birth defects and other reproductive harm.



WARNING

The engine exhaust from this product contains chemicals known to the State of California to cause cancer, birth defects or other reproductive harm.

**Californie Proposition 65
Avertissement**

Les échappements des moteurs diesel et certains de leurs composés sont reconnus par l'Etat de Californie pour être cancérigènes, provoquer des défauts congénitaux et d'autres dangers en matière de reproduction.



AVERTISSEMENT

L'émission du moteur de ce matériel contient des produits chimiques que l'Etat de Californie considère être cancérigènes, provoquer des défauts congénitaux et d'autres dangers en matière de reproduction.

**California Advertencia
de la Proposicion 65**

El estado de California hace saber que los gases de escape de los motores diesel y algunos de sus componentes producen cáncer, defectos de nacimiento y otros daños en el proceso de reproducción humana.



ADVERTENCIA

El estado de California hace saber que los gases de escape de este producto contienen productos químicos que producen cáncer, defectos de nacimiento y otros daños en el proceso de reproducción humana.

IMPORTANT MESSAGE

Thank you for purchasing this Jacobsen product. You have purchased a world class product, one of the best designed and built anywhere.

This machine comes with a Technical Manual containing safety, operation, parts, maintenance and service information. The useful life and good service you receive from this machine depends to a large extent on how well you read and understand this manual. Treat your machine properly, lubricate and adjust it as instructed, and it will give you many years of reliable service.

Your safe use of this Jacobsen product is one of our prime design objectives. Many safety features are built in, but we also rely on your good sense and care to achieve accident-free operation. For best protection, study the manual thoroughly. Learn the proper operation of all controls. Observe all safety precautions. Follow all instructions and warnings completely. Do not remove or defeat any safety features. Make sure those who operate this machine are as well informed and careful in its use as you are.

See a Jacobsen dealer for any service or parts needed. Jacobsen service ensures that you continue to receive the best results possible from Jacobsen's products. You can trust Jacobsen replacement parts because they are manufactured with the same high precision and quality as the original parts.

Jacobsen designs and builds its equipment to serve many years in a safe and productive manner. For longest life, use this machine only as directed in the manual, keep it in good repair and follow safety warnings and instructions. You'll always be glad you did.

Textron Golf, Turf & Specialty Products
One Bob Cat Lane
Johnson Creek, WI 53038-0469

TABLE OF CONTENTS	FIGURES	PAGE
SAFETY		2
SETUP		3-5
OPERATION		6, 7
SERVICE		8, 9
STORAGE/SPECIFICATIONS		10
PARTS SECTION		11
CHASSIS GROUP	FIGURE 1	12, 13
ENGINE AND GUARD GROUP	FIGURE 2	14, 15
FLAIL BLADE REEL	FIGURE 3	16, 17
1/8" FIXED BLADE REEL	FIGURE 4	18, 19
1/16" FIXED BLADE REEL	FIGURE 5	20, 21
1/32" FIXED BLADE REEL	FIGURE 6	22, 23
HANDLE	FIGURE 7	24, 25

NOTICE !!!

Unauthorized modifications may present **extreme** safety hazards to operators and bystanders and could also result in product damage.

Textron Golf, Turf & Specialty Products strongly warns against, rejects and disclaims any modifications, add-on accessories or product alterations that are not designed, developed, tested and approved by Textron Golf, Turf & Specialty Products Engineering Department. Any Textron Golf, Turf & Specialty Products product that is altered, modified or changed in any manner not specifically authorized after original manufacture—including the addition of “after-market” accessories or component parts not specifically approved by Textron Golf, Turf & Specialty Products—will result in the Textron Golf, Turf & Specialty Products Warranty being voided.

Any and all liability for personal injury and/or property damage caused by any unauthorized modifications, add-on accessories or products not approved by Textron Golf, Turf & Specialty Products will be considered the responsibility of the individual(s) or company designing and/or making such changes. Textron Golf, Turf & Specialty Products will vigorously pursue full indemnification and costs from any party responsible for such unauthorized post-manufacture modifications and/or accessories should personal injury and/or property damage result.



This symbol means:
ATTENTION!
BECOME ALERT!

Your safety and the safety of others is involved.

Signal word definitions:

The signal words below are used to identify levels of hazard seriousness. These words appear in this manual and on the safety labels attached to Textron Golf, Turf & Specialty Products machines. For your safety and the safety of others, read and follow the information given with these signal words and/or the symbol shown above.

DANGER

DANGER indicates an imminently hazardous situation which, if not avoided, **WILL** result in death or serious injury.

WARNING

WARNING indicates a potentially hazardous situation which, if not avoided, **COULD** result in death or serious injury.

CAUTION

CAUTION indicates a potentially hazardous situation which, if not avoided, **MAY** result in minor or moderate injury. It may also be used to alert against unsafe practices or property damage.

CAUTION

CAUTION used without the safety alert symbol indicates a potentially hazardous situation which, if not avoided, **MAY** result in property damage.



MODEL NUMBER: This number appears on sales literature, technical manuals and price lists.

SERIAL NUMBER: This number appears only on your mower. It contains the model number followed consecutively by the serial number. Use this number when ordering parts or seeking warranty information.

GENERAL NOTE: FRONT, REAR, RIGHT HAND AND LEFT HAND REFERENCES BELOW ARE WITH RESPECT TO AN OPERATOR AT THE CONTROLS.

EQUIPMENT AND PARTS INSPECTION

Remove equipment and parts from the packing box and inspect for possible shipping damage. You should have the following items:

- Upper and lower handle.
- Pre-assembled chassis and engine.
- Loose parts bag.
- Reel assembly (if ordered with unit).

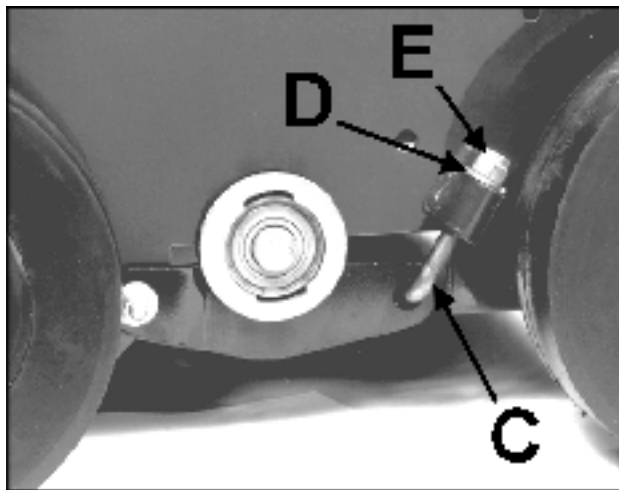
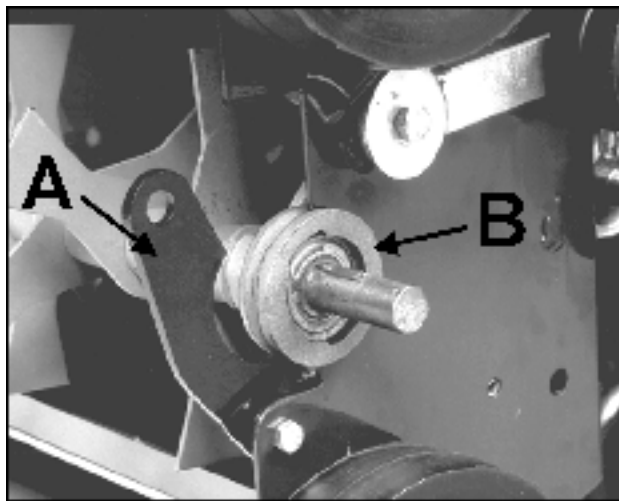
REEL INSTALLATION

1. Remove the belt guards and tilt the unit back to allow access to the underside of the chassis.

CAUTION

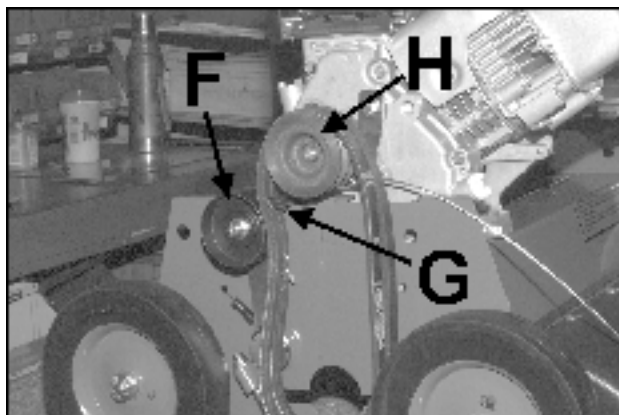
Block the unit as required to prevent it from falling accidentally.

2. Loosen the reel clamps **A** and pivot down and away from chassis. With the pulley end toward the engine side of unit, set the reel into place against the chassis. Bearing guides **B** on the reel will provide correct alignment.
3. Pivot the reel clamps back up over the reel bearings. Install the reel clamp rods **C**, washers **D** and nuts **E**. Tighten the nuts securely but do not over tighten. Check reel to make sure it rotates freely.



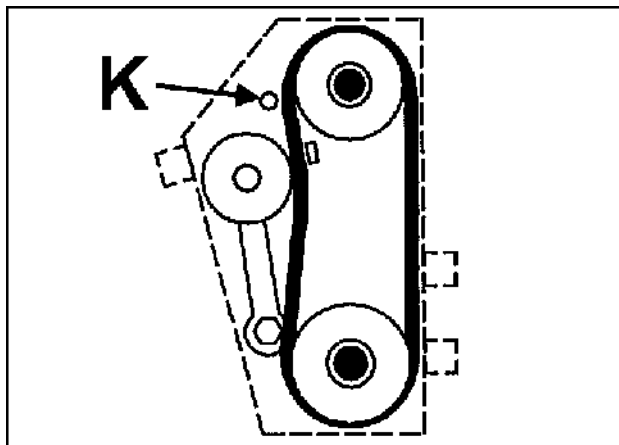
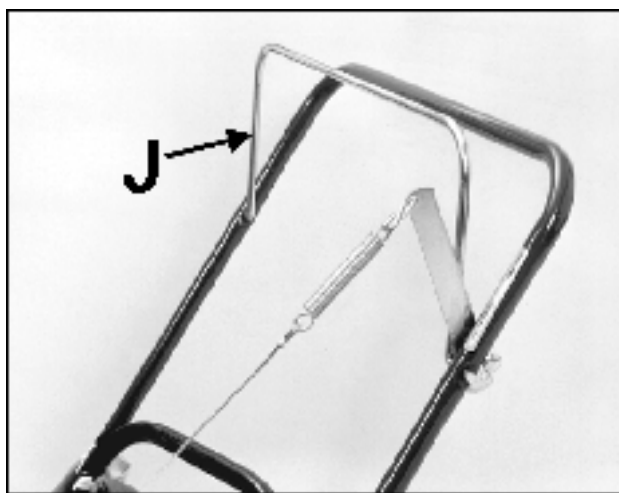
PULLEY AND BELT INSTALLATION

1. Gently tap the woodruff key (from loose parts bag) into the slot on the reel shaft.
2. Start the two (2) set screws into the reel pulley.
3. Slide the pulley **F**, hub side inward, onto the reel shaft. Tap it into position over the woodruff key.
4. Align the reel pulley with the engine pulley **H**. Placing a straight edge across both pulleys will show when the two pulleys are aligned.
5. Tighten the reel pulley set screws and check the engine pulley set screws to make sure they are also tight.
6. Place the new belts between the idler pulley and the snubber **G** on the idler arm, then over the engine and reel pulleys.



HANDLE AND CABLE INSTALLATION

1. Assemble the upper and lower handle sections using the hardware provided in the loose parts bag.
2. Mount the handle to the unit by placing the bottom ends of the handle over the pins at the top edge center of the chassis. Secure the handle with hairpins (from loose parts bag).
3. Connect one end of the spring (from loose parts bag) to the clutch cable and the other end to the arm of the clutch bail on the handle.
4. Pull the bail back against the handle. The idler pulley should be tight against the reel belts when the bail is against the handle.
5. Release the bail. The idler pulley should move away from the reel belts and allow the belts to slip on the engine pulley when the bail is released.
6. Reinstall the belt guards. The belt stop rod **K** should be positioned outside the belts.



WHEEL BEARING LUBRICATION

Using a pressurized lubrication gun and a lithium based lubricant, lubricate the wheel bearings. This procedure should be done at the time of setup and also after every 25 hours of service.

NOTE: During setup, each wheel cavity should be filled.
The cavity is full when lubricant is seen coming out of bearing.

BLADE HEIGHT ADJUSTMENT

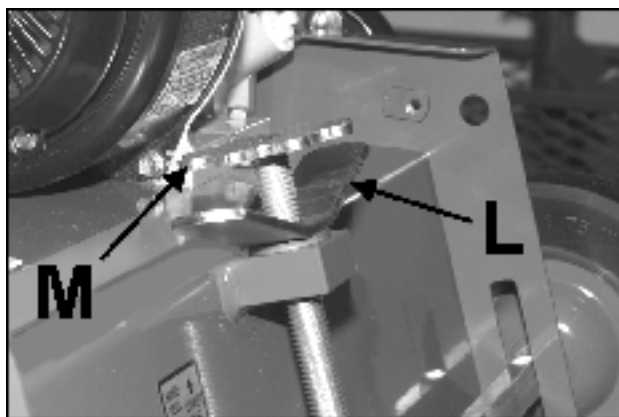
Blade height is adjusted by loosening the locking lever **L** and turning the adjusting knob **M** to raise or lower the front wheels.

After installing any reel, make the first adjustment on a hard level surface.

Adjust the blades to 1/8" (3 mm) above the surface. Test this setting on a small area, then adjust the blades to turf conditions as required. Each number on the adjustment decal represents a change of 1/8" (3mm).

If the desired blade position cannot be obtained by adjusting the front wheels, the rear wheels can be adjusted. Mounting the wheels in the top hole lowers the blades and mounting the wheels in the bottom hole raises the blades.

The front axle may be locked in the down position to prevent the floating action if desired. Install and secure 1/2" screws, washers, lockwashers and nuts in the slots above the axle. This will prevent the axle from moving.



WARNING

DO NOT operate this equipment until you have thoroughly read and understand the operation section of this manual.

DO NOT operate equipment without all shields in place.

DO NOT make adjustments or perform any maintenance while the engine is running.

NEVER start or run the engine inside where exhaust fumes can collect. Carbon monoxide present in the exhaust is an odorless and deadly gas.

Gasoline is extremely flammable and highly explosive under certain conditions. Always stop the engine and do not smoke or allow open flames or sparks when refueling. **BE SURE** to install fuel cap after refueling.

DO NOT fill containers in a vehicle or on a truck or trailer bed with a plastic liner. Fill containers on the ground away from the vehicle.

When practical, remove gas powered equipment from the truck or trailer and refuel it on the ground. If equipment must be refueled on the truck or trailer, refuel from a portable container rather than a dispenser nozzle.

Keep the dispenser nozzle in contact with the rim of the fuel tank or container opening until fueling is complete. Do not use a nozzle lock-open device.

Any warning decal that becomes illegible should be replaced immediately.

To prevent injuries from thrown blades, **NEVER** operate the unit with reel blades that are missing, cracked, badly bent or in any type of abnormal condition.

Before operating, check the area and remove any object which may present a safety hazard or damage the equipment.

To prevent injury from rotating blades, **NEVER** place hands or feet beneath the unit.

This unit is not self propelled by a mechanical drive system. However, under some conditions the reel rotation may cause the unit to move under its own power.

Engage the reel **ONLY** when you are in the proper operator's position behind the handle.

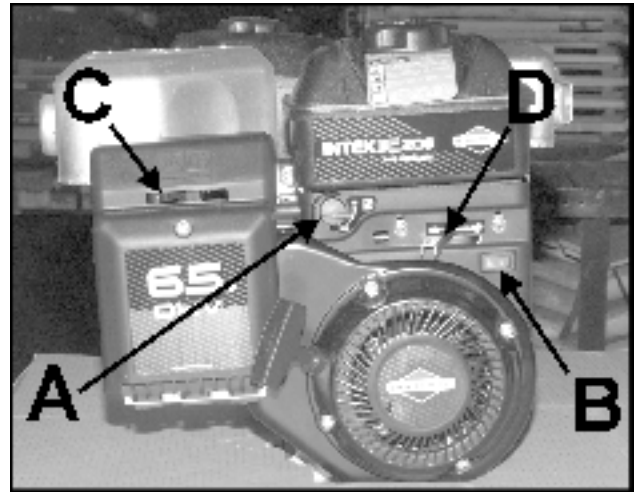
The clutch bail is designed to be held by the operator to keep the reel belt engaged **ONLY** during use. **DO NOT** clamp or fasten the bail to the handle. If the reel is allowed to rotate while the operator is not in the proper operating position, the unit may move on its own. This will create an unsafe situation in which the operator and/or bystanders may be injured.

DAILY PRE-OPERATION CHECK

1. Visually check for loose or damaged parts and fasteners. Repair or replace as needed before unit is placed into operation.
2. Check the reel for bent or broken blades; replace as necessary.
3. Check engine oil level. Add oil if necessary, following the engine manufacturer's recommendations. Refer to engine manual included with literature packet.
4. Fill the fuel tank with the amount and type of fuel recommended by the engine manufacturer.

STARTING THE ENGINE

1. Turn fuel shut-off valve **A** to "ON" position.
2. Push stop switch **B** to "ON" position.
3. Move manual choke control lever **C** to "CHOKE" position.
4. Move engine throttle control lever **D** to "FAST" position.
5. Grasp starter grip and pull slowly until resistance is felt, then pull cord rapidly to start engine. Repeat if necessary with choke opened slightly.
6. After engine starts, move choke **C** to "RUN" position.
7. Adjust throttle control **D** on engine as required.

**OPERATING TIPS**

1. Start the unit in motion **BEFORE** engaging the reel to prevent unnecessary damage to the turf and to avoid bogging down the engine. Disengage the reel before stopping forward motion.
2. Make all passes across the turf at a uniform speed.
3. Disengage the reel at the end of each pass and before slowing or stopping to make a turn. This prevents turf damage while turning the unit.
4. If the engine bogs down while going through a thick patch of turf, push down on the handle just enough to raise the reel and allow the engine to return to normal speed.

NOTE: Never cross hard objects or surfaces (such as sidewalks, driveways, stepping stones, etc.) with the reel engaged. Severe blade damage may occur.

REELS AND SUGGESTED USES**1/8" (3 mm) Fixed Blade Reel, Part No. 545440**

2" (51 mm) blade spacing is excellent for general dethatching, renovating and breaking up cores.

1/16" (1.6 mm) Fixed Blade Reel, Part No. 547452

Blades can be spaced on 1" (25 mm) or 1 1/2" (38 mm) centers with the use of spacers between the blades. Use the 1" blade spacing for renovating heavy grass areas or preparing a lawn for re-seeding. Use the 1 1/2" (38 mm) blade spacing for renovating and thinning all coarse stemmed grasses.

1/32" (0.8 mm) Fixed Blade Reel, Part No. 547453

3/4" (19 mm) blade spacing is excellent for thatch and grain control on fine bent grasses, vertical slicing, renovating and seed bed preparation.

Flail Blade Reel, Part No. 544440

1/8" (3 mm) flail blades for thatch control and breaking up soil cores after aerating. This reel is **NOT RECOMMENDED** for fine lawns and turf, such as golf course greens.

⚠ WARNING

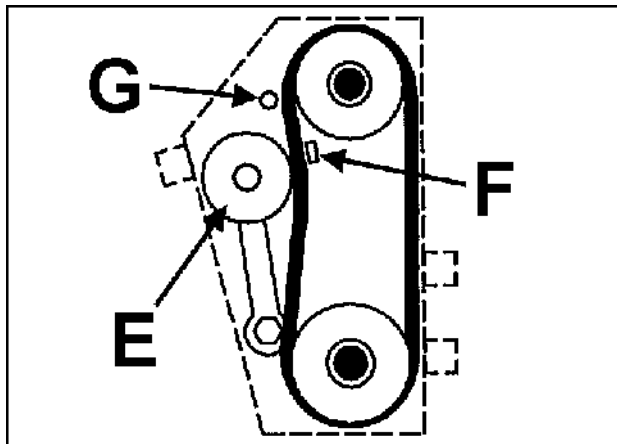
When replacement parts are required, use genuine **JACOBSEN** parts or parts with equivalent characteristics, including type, strength and material. Failure to do so may result in product malfunction and possible injury to the operator and/or bystanders.

BELT REPLACEMENT

Belt tension is maintained by a spring loaded idler, controlled by the clutch bail. No belt tension adjustment is necessary when proper belts are used.

NOTE: A matched pair of belts must be used for correct operation. If one belt needs to be replaced, you **MUST** replace both belts to assure proper belt tension.

1. Remove belt guards and old belts from unit.
2. Place the new belts between the idler pulley **E** and the snubber **F** on the idler arm and then over the engine and reel pulleys.
3. Install the belt guards. Make sure the belt stop rod **G** is outside of the belt.



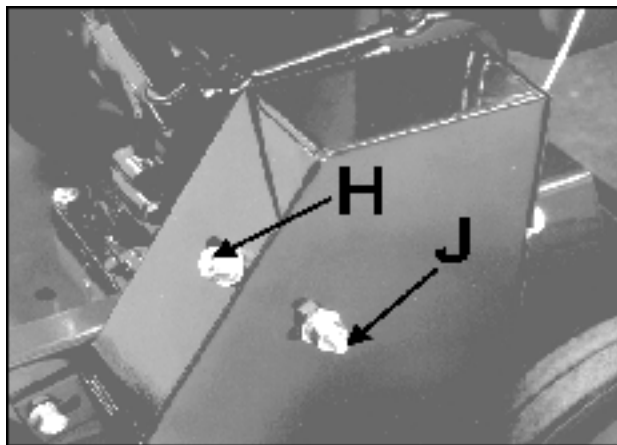
LUBRICATION

The reel and idler pulley bearings are factory sealed and require no lubrication. Wheel bearings have lubrication fittings and require lubrication with a standard lithium based lubricant after every 25 hours of use.

BELT GUARD ROD ADJUSTMENT

There are two belt guard rods mounted in the belt guard. The long rod **H** helps to prevent the belts from slipping off the engine pulley. The short rod **J** (belt stop rod) acts as a belt brake when the clutch bail is released, ensuring that the reel stops quickly.

It is important that these two rods are adjusted correctly. If the belt guard is removed for any reason, make sure the two rods are positioned at the end of their respective slots.



BLADE REPLACEMENT

Fixed Blade Reels - To replace worn or damaged blades or to change to different blade and/or spacer combination.

1. Remove the entire reel from the chassis.
2. Remove bearing from end of shaft (opposite the pulley end). Loosen the set screw securing the locking collar. With a small punch, tap the bearing approximately one quarter turn in the opposite direction of the reel rotation. This relieves the cam lock action of the bearing and it can be removed from the shaft.
3. Hold the shaft to keep it from turning and remove the shaft nut. Remove the blades and spacers from the shaft and replace or rearrange as required.

NOTE: When reassembling the reel, it is important to start and end with a spacer. **DO NOT** assemble with a blade next to the shaft nut at either end.

Fixed blades must be placed on the shaft in a pattern 60° off center from the previous blade.

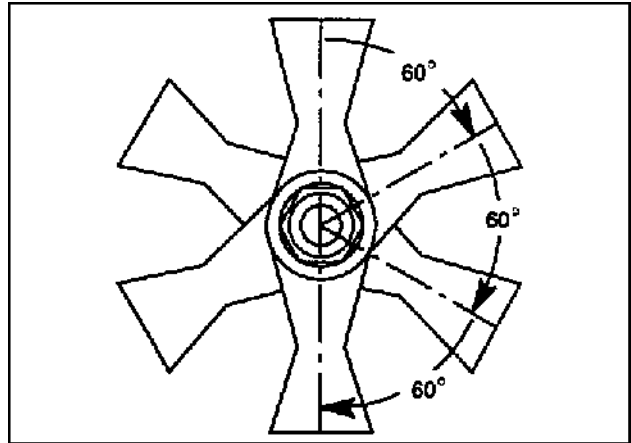
4. Re-install the shaft nut and tighten securely to keep the blades from coming loose.
5. Re-install the reel bearing by exactly reversing the steps taken to remove it.

NOTE: Blades that are worn on one cutting face may be reversed and used again.

Flail Blade reels

Work on only one of the six blade shaft assemblies at a time.

1. Remove the cotter pin from one end of one of the blade shafts and pull the shaft out.
2. Replace the blades and other worn parts and re-assemble in the proper order while sliding the shaft back into place.
3. Install a new cotter pin to secure the shaft.



STORAGE INSTRUCTIONS

WARNING

To prevent possible explosion or ignition of vaporized fuel, do not store equipment with fuel in tank or carburetor in enclosure with open flame (for example, a furnace or water heater pilot light).

After daily usage of unit.

1. Wash the unit with water after the engine has cooled down.
2. Check the reel blades for damage. Replace any cracked, broken, bent or worn blades.
3. Check the engine oil level and inspect the air cleaner for excessive dirt or any obstructions.
4. Service engine according to engine manufacturer's recommendations. Refer to engine manual for all recommendations.

Before the equipment is put in to storage for any period exceeding 30 days, the following steps should be taken.

1. Drain all fuel from the fuel tank and fuel lines.
2. Start the engine and run until all the fuel is used from the carburetor float bowl and the engine stops.

3. While the engine is still warm, drain the crankcase oil and replace with the proper weight oil corresponding to the season the equipment will next be used.
4. Remove the spark plug and squirt a small amount of engine oil into the cylinder. Slowly pull the starter a few times to distribute oil in the cylinder and reinstall the spark plug.
5. Check the reel for damaged blades and replace as needed.
6. Lubricate the wheel bearings with a standard lithium based lubricant.

To put the equipment into service after an extended period of storage:

1. Check for loose parts and tighten if necessary.
2. Check for damaged blades and replace as necessary.
3. Fill the fuel tank and then check the engine oil level.
4. Start the engine and check for fuel leaks. Repair any leaks before operating the unit.

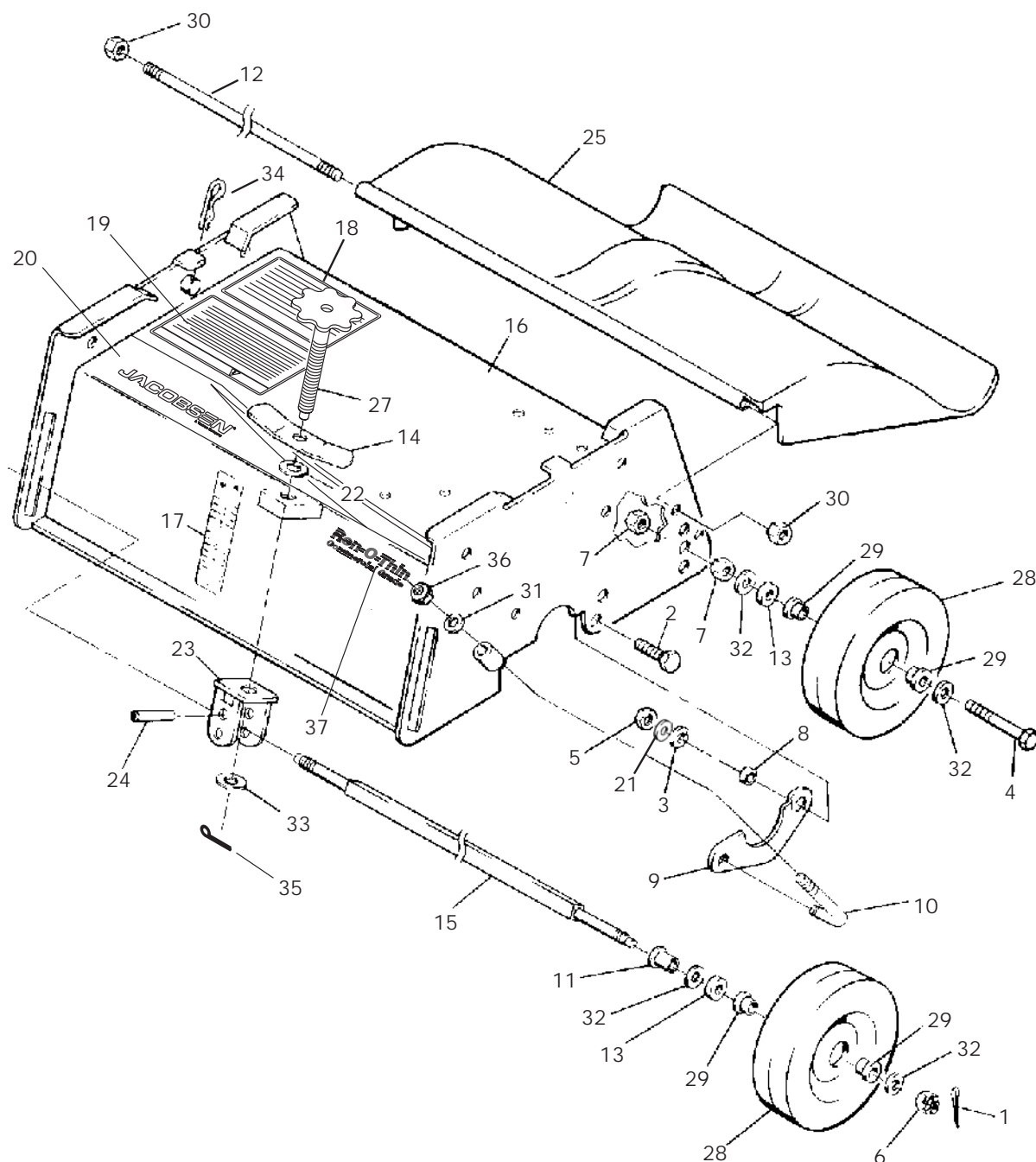
SPECIFICATIONS

Chassis:..... 12 gauge steel, formed and welded
Reduction:..... 1.33:1 (engine to reel)
Wheelbase:.....14 5/8" (371 mm) at level position
Reel Speed:..... 2700 RPM
Cutting Width:..... 18" (457mm)
Cutting Depth:..... 7/8" (22mm)
Blade Adjustment:... 1" (25mm) above ground level
 to 7/8" (22mm) below ground level

Weight (less reel):.....106 lbs. (48 Kg.)
Engine:
 Model..... Model 121432
 Type 0120, Trim E1
 4 cycle 6.5 H.P. Briggs & Stratton
 aluminum cylinder with cast iron sleeve
Starter:..... Recoil, on/off switch
Governor:..... 3600 RPM, no load

PARTS SECTION

FIGURE 1



2703562-01

FIGURE 1

ITEM	PART NO.	DESCRIPTION	QTY	ITEM	PART NO.	DESCRIPTION	QTY
1-1	304636	COTTER PIN, 12 x 1.12 YS	2				
1-2	64123-107	BLT-HEX 5/16-18X7/8	2				
1-3	64006-02	LCKWSHER-HELICAL 5/16	2				
1-4	64123-31	BOLT-1/2-13X3 HEX	2				
1-5	64025-02	NUT-HEX 5/16-18	2				
1-6	64025-30	NUT-HEX 1/2-20 SLOT	2				
1-7	64025-19	NUT-1/2-13 HEX	4				
1-8	517226	BRG,SLV .33 .50 .20 IRON	2				
1-9	518972.6	CLAMP, REEL	2				
1-10	519043	CLAMP, ROD LOWER	2				
1-11	520875	BUSHING,FLANGED	2				
1-12	520877	ROD,HINGE (PLATED)	1				
1-13	522256	WASHER,FELT	4				
1-14	522375	LEVER,LOCKING (PLATING)	1				
1-15	522385	AXLE PLATING	1				
1-16	4124501	CHASSIS AY - SERVICE	1				
		(INCLUDES ITEMS 17-20)					
1-17	520913	DECAL,INSTRUCTION	1				
1-18	522390	DECAL,OPERATING INST	1				
1-19	522394	DECAL,WARNING-OPER	1				
1-20	4124281	LABEL-FRONT, REN-O-THIN	1				
1-21	64163-55	WASHER .328X.75X14 GA	2				
1-22	64163-73	WSHR-.625IDX1.12DX.062	1				
1-23	545859	PIVOT AY (PLATED)	1				
		(INCLUDES ITEM 24)					
1-24	316947	PIN,SPIROL.312 1.250PS	2				
1-25	545861	SHIELD AY,TRAILING	1				
		(INCLUDES ITEM 26)					
1-26*	548238	RIVET,.187.625 PA POP	5				
1-27	540273	SCREW AY,ADJUSTING	1				
1-28	4124192	WHEEL, 8X2.5 .75BRG SP	4				
		(INCLUDES ITEM 29)					
1-29	520983	BALL BEARING	8				
1-30	64229-02	LOCK NUT-NYLON 5/16-18	2				
1-31	64163-31	WASHER, 25/64X1X12	2				
1-32	64163-67	WASHER-.516X1X12GA	8				
1-33	64163-61	WSHR .81X.406X16GA	1				
1-34	548190	PIN,HAIR.69 1.88.09 YS	2				
1-35	64140-3	COTTER PIN-3/32X3/4	1				
1-36	2702143	NUT,.38-24 YS FLEXLOCK	2				
1-37	4124339	LABEL-FRONT, REN-O-THIN	1				

*NOT ILLUSTRATED

OBTAIN
ENGINE
LOCALLY

17

1

2

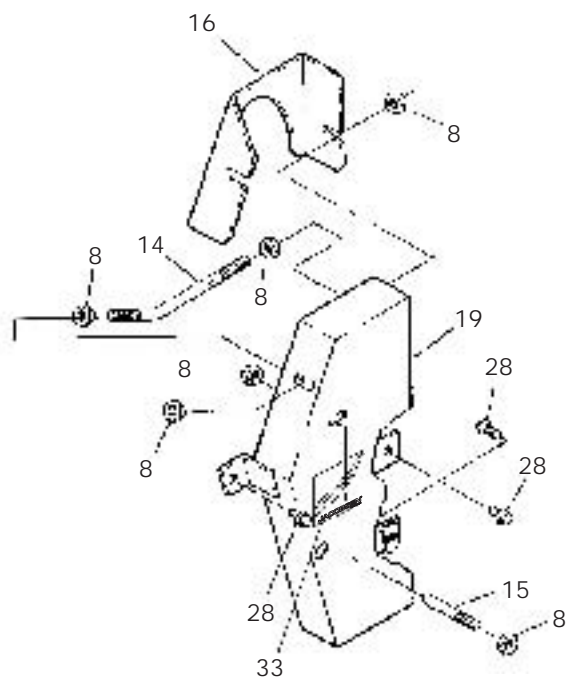
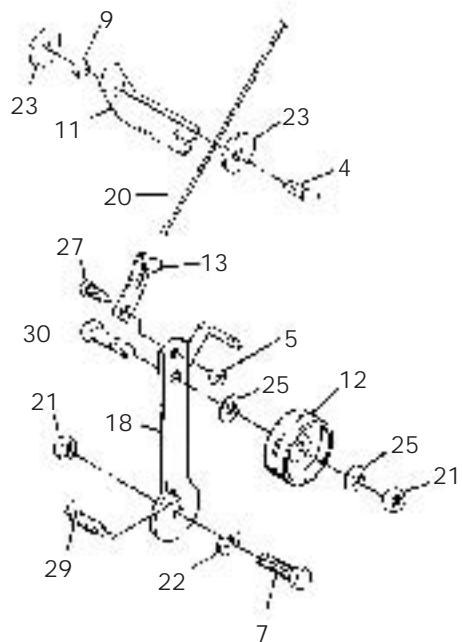
3

6

10

24

26

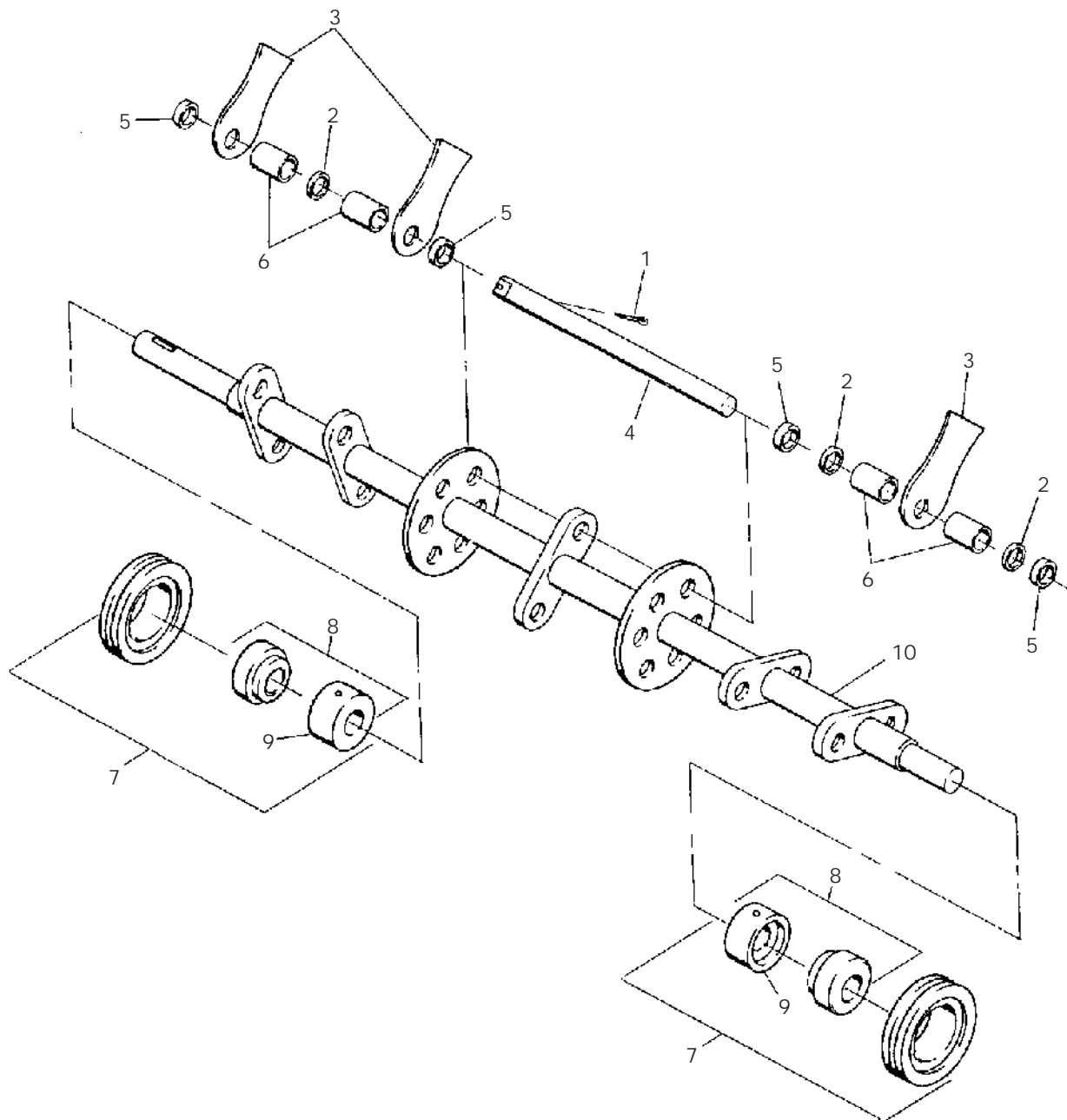


4124530-02

FIGURE 2

ITEM	PART NO.	DESCRIPTION	QTY	ITEM	PART NO.	DESCRIPTION	QTY
2-1	64163-55	WASHER .328X.75X14GA	1				
2-2	64268-02	NUT-FL NYLON LCK 5/16-18	4				
2-3	64164-19	KEY WOODRUFF.19X.75 #9	1				
2-4	306369	SCRW,.31-24.750 YS HX G5	1				
2-5	64025-01	NUT-1/4-20 HEX	1				
2-6	64123-69	BOLT-5/16-18X1-1/2 HEX	4				
2-7	64123-16	BLT-HEX 3/8-16X1-1/4	1				
2-8	64141-6	NUT, 5/16-18	6				
2-9	517226	BRG,SLV .33 .50 .20	1				
2-10	517139	PULLEY	1				
2-11	523802	ARM,DEFLECTOR	1				
2-12	520870	PULLEY,2.75 DIA	1				
2-13	520878	CLIP,CABLE (PLATING)	1				
2-14	520879	ROD,ADJUSTING (PLATING)	1				
2-15	520902	ROD,STUD THREADED	1				
2-16	520941.6	GUARD, INNER BELT	1				
2-17	521813	DECAL, WARNING SOUND	1				
2-18	547435	ARM AY,IDLER (PLATED)	1				
2-19	547440.6	GUARD AY	1				
2-20	547445	CABLE AY	1				
2-21	548052	NUT,.38-16 HX UNITORQ	2				
2-22	64163-31	WASHER, 25/64X1X12	1				
2-23	64163-19	WSHR-33/64X1-1/4X12GA	1				
2-24	524801	BELT,V-2 MATCHED 30 3/8	1				
2-25	64163-61	WSHR .81X.406X16GA	2				
2-26	64044-18	SCREW-SET 5/16-18 x 5/16	4				
2-27	548735	SCRW,.25-20.75 YS PS	1				
2-28	64139-13	BLT-WLF 5/16-18X1/2	3				
2-29	548995	SPRING,EXTENSION	1				
2-30	64123-87	BOLT-HEX 3/8-16X1-3/4	1				
2-31	805875	KEY,.19SQ X 1.75LG PS	1				
2-32	524779.7	PULLEY, 3 INCH DIA.	1				
2-33	4124759	DECAL, EMBLUM, JAC	1				

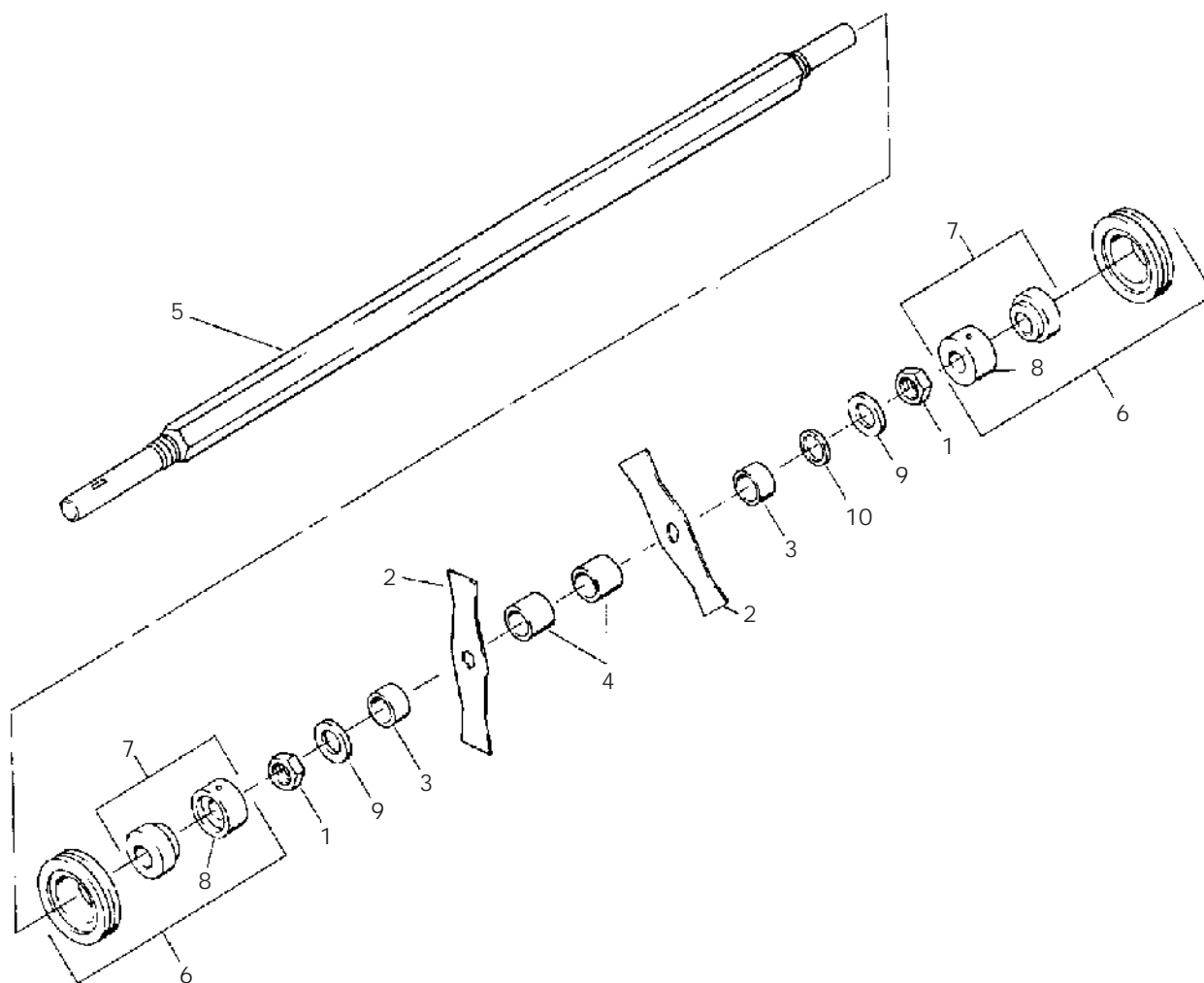
FIGURE 3



ITEM	PART NO.	DESCRIPTION	QTY	ITEM	PART NO.	DESCRIPTION	QTY
3-1	306956	COTTER PIN	6				
3-2	64163-67	WASHER-.516X1X12GA	18				
3-3	516897	BLADE,FLAIL	18				
3-4	517155	SHAFT	6				
3-5	517162	SPACER, .328 (8mm)	24				
3-6	517163	SPACER, .891 (23mm)	24				
3-7	545640	PILLOW BLOCK AY	2				
	(INCLUDES ITEMS 8 & 9)						
3-8	548101	BEARING	2				
3-9	521857	COLLAR,BRG LOCKING	2				
3-10	546377.7	SHAFT	1				
3-11*	544440A	REEL AY, FLAIL	1				
	(INCLUDES ITEMS 1-10)						

* NOT ILLUSTRATED

FIGURE 4

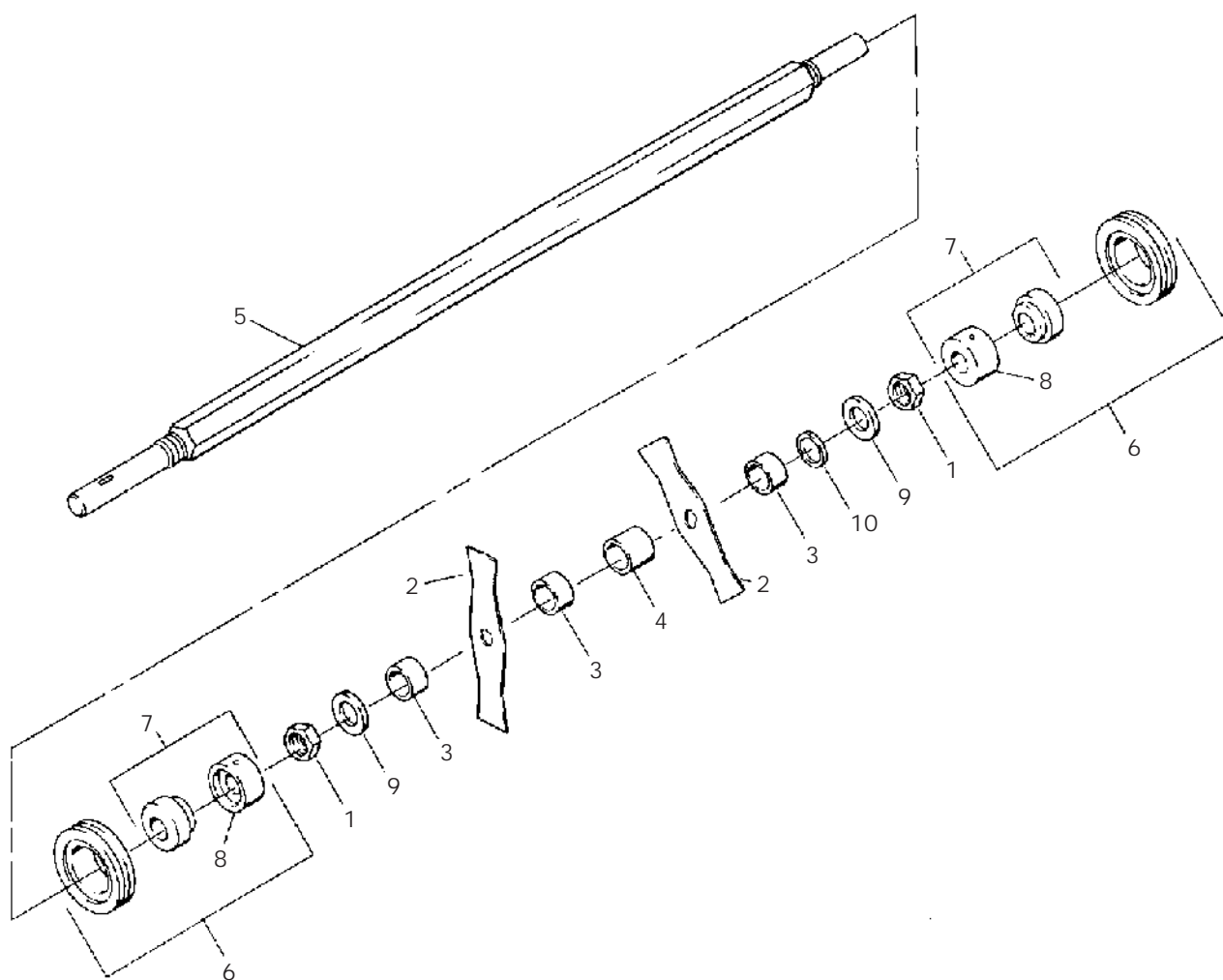


ITEM	PART NO.	DESCRIPTION	QTY	ITEM	PART NO.	DESCRIPTION	QTY
5-1	305134	NUT,.88-14 YS HX JAM (KC)	2				
5-2	516898	BLADE, 1/8" (3.2mm)	10				
5-3	516904	SPACER, .700 (19.6mm)	2				
5-4	516905	SPACER, .900 (23mm)	18				
5-5	517148	SHAFT	1				
5-6	545640	PILLOW BLOCK AY	2				
		(INCLUDES ITEMS 7 & 8)					
5-7	548101	BEARING	2				
5-8	521857	COLLAR,BRG LOCKING	2				
5-9	548176	WSHR,.88 1.50.10 YS FLAT	2				
5-10	820484	WSHR, FLAT 1.17 1.75 .13 A/R					
		(USE WASHERS AS REQUIRED SO THAT THE NUT (ITEM 1) WILL NOT CONTACT HEX SHAFT (ITEM 5) WHEN TIGHT)					
5-11*	545440A	REEL AY, .12 BLADE X 2.0	1				
		(INCLUDES ITEMS 1-10)					

* NOT ILLUSTRATED

REN-O-THIN

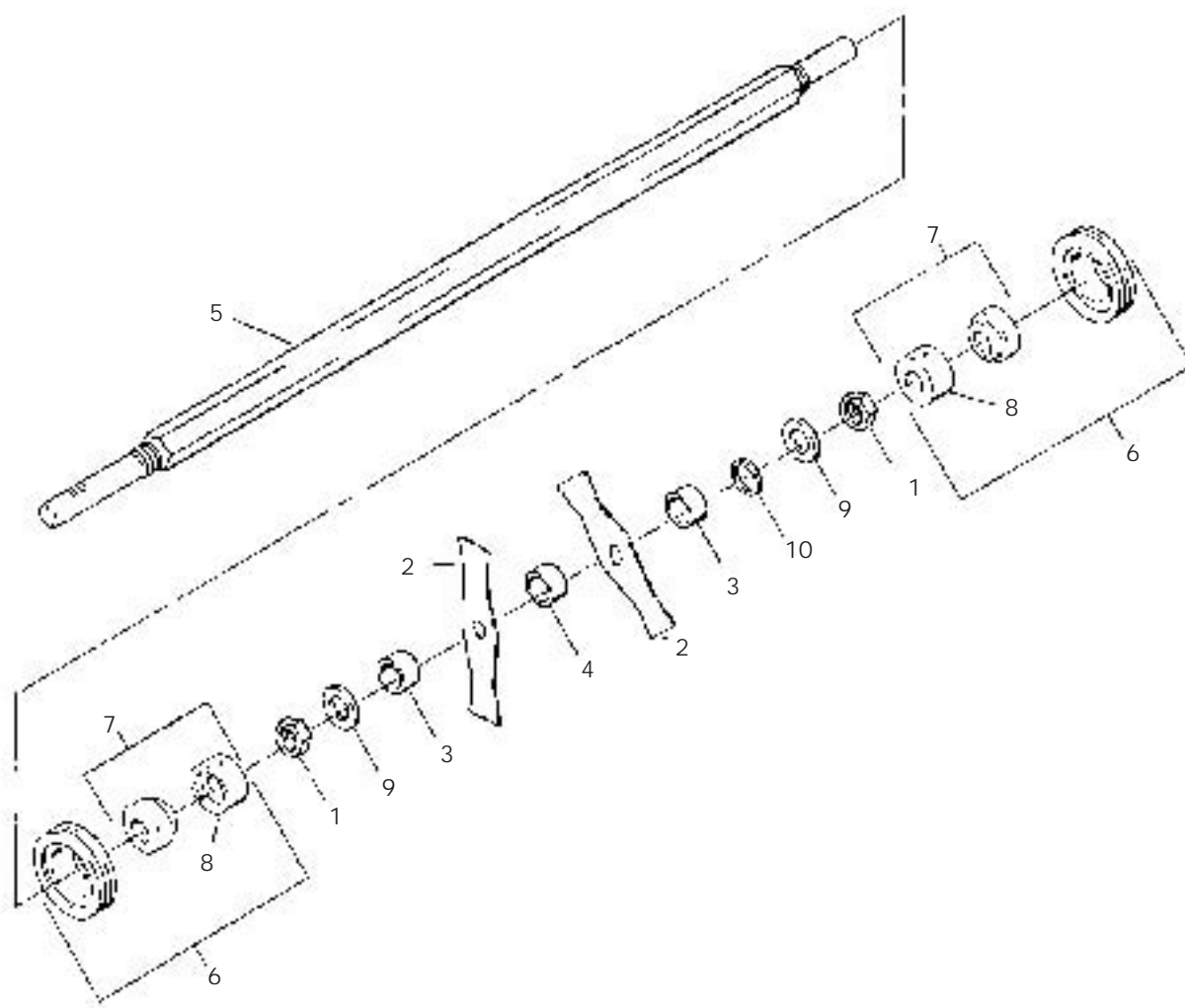
FIGURE 5



ITEM	PART NO.	DESCRIPTION	QTY	ITEM	PART NO.	DESCRIPTION	QTY
5-1	305134	NUT,.88-14 YS HX JAM (KC)	2				
5-2	516900	BLADE,DE-THATCH.075 TH	13				
5-3	516903	SPACER	14				
5-4	516905	SPACER	12				
5-5	517148	SHAFT	1				
5-6	545640	PILLOW BLOCK AY	2				
		(INCLUDES ITEMS 7 & 8)					
5-7	548101	BEARING	2				
5-8	521857	COLLAR,BRG LOCKING	2				
5-9	548176	WSHR,.88 1.50.10 YS FLAT	2				
5-10	820484	WSHR, FLAT 1.17 1.75 .13 A/R					
		(USE WASHERS AS REQUIRED SO THAT THE NUT (ITEM 1) WILL NOT CONTACT HEX SHAFT (ITEM 5) WHEN TIGHT)					
5-11*	547452A	REEL AY, .06 BLADE X 1.5	1				
		(INCLUDES ITEMS 1-10)					

* NOT ILLUSTRATED

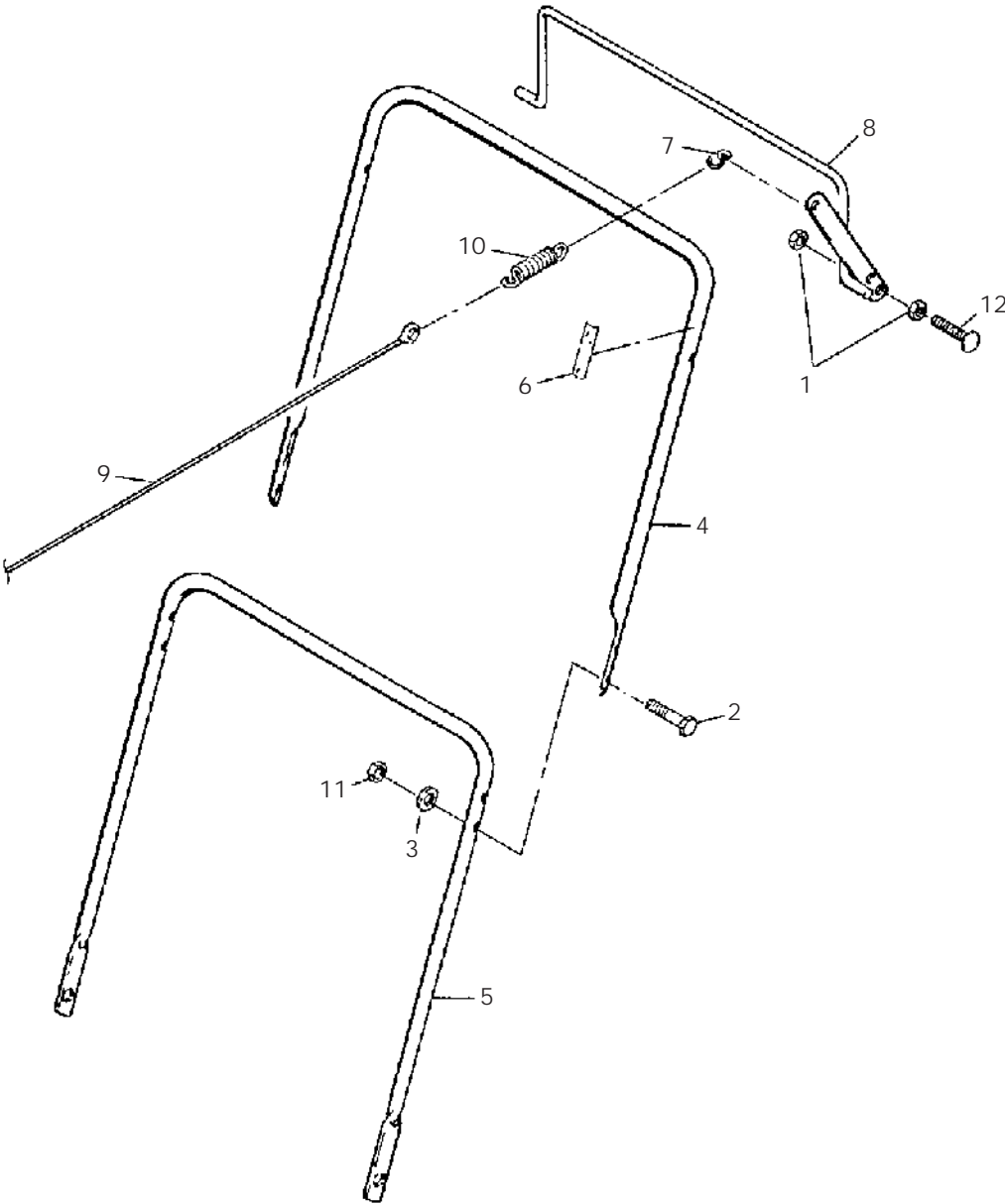
FIGURE 6



ITEM	PART NO.	DESCRIPTION	QTY	ITEM	PART NO.	DESCRIPTION	QTY
6-1	305134	NUT,.88-14 YS HX JAM (KC)	2				
6-2	516901	BLADE, 1/32" (0.8mm)	25				
6-3	516903	SPACER, .500 (12.7mm)	2				
6-4	516904	SPACER, .700 (19.6mm)	24				
6-5	517148	SHAFT	1				
6-6	545640	PILLOW BLOCK AY	2				
		(INCLUDES ITEMS 7 & 8)					
6-7	548101	BEARING	2				
6-8	521857	COLLAR,BRG LOCKING	2				
6-9	548176	WSHR,.88 1.50.10 YS FLAT	2				
6-10	820484	WSHR, FLAT 1.17 1.75 .13 A/R					
		(USE WASHERS AS REQUIRED SO THAT					
		THE NUT (ITEM 1) WILL NOT CONTACT					
		HEX SHAFT (ITEM 5) WHEN TIGHT)					
6-11*	547453A	REEL AY, FIXED 1/32 X 3/4	1				
		(INCLUDES ITEMS 1-10)					

* NOT ILLUSTRATED

FIGURE 7



REN-O-THIN

HANDLE

2703562-07

FIGURE 7

ITEM	PART NO.	DESCRIPTION	QTY	ITEM	PART NO.	DESCRIPTION	QTY
7-1	64025-02	NUT-HEX 5/16-18	2				
7-2	64123-07	BOLT, 1/4-20X1-1/2 HEX	4				
7-3	64163-03	WSHR-.256IDX.62ODX18GA	4				
7-4	520868.7	HANDLEBAR, UPPER	1				
7-5	520869.7	HANDLEBAR, LOWER	1				
7-6	520912	DECAL, REEL CONTROL	1				
7-7	521744	RELEASE 'S' HOOK	1				
7-8	547441	BAIL CONTROL AY	1				
7-9	547445	CABLE AY	1				
7-10	2702144	SPRING,EXTENSION.63 4.3	1				
7-11	64151-17	LOCKNUT, HEX	4				
7-12	800606	CBOLT,.31-18 1.50 YS G5	1				

World Class Quality, Performance And Support

Equipment from Textron Golf, Turf & Specialty Products is built to exacting standards ensured by ISO 9001 registration at all our manufacturing locations.

A worldwide dealer network and factory-trained technicians backed by Textron Parts Xpress provide reliable, high-quality product support.



BOB-CAT BUNTON CUSHMAN JACOBSEN RANSOMES RYAN

1451 Marvin Griffin Rd, Augusta, GA 30906
www.textron.com