

# SETUP, PARTS & MAINTENANCE MANUAL EC CUTTERDECKS

---

## Cutting Unit Models:

933506      Cutterdeck-36 Rear Discharge EC

933407A    Cutterdeck-36 Side Discharge EC

(Operation & Safety Manual: 4122571, 4122451)



*WARNING: If incorrectly used this machine can cause severe injury. Those who use and maintain this machine should be trained in its proper use, warned of its dangers and should read the entire manual before attempting to set up, operate, adjust or service the machine.*



4122042 REV C



**CALIFORNIA**  
**Proposition 65 Warning**

Diesel engine exhaust and some of its constituents are known to the State of California to cause cancer, birth defects and other reproductive harm.



**WARNING**

The engine exhaust from this product contains chemicals known to the State of California to cause cancer, birth defects or other reproductive harm.

**Californie Proposition 65**  
**Avertissement**

Les échappements des moteurs diesel et certains de leurs composés sont reconnus par l'Etat de Californie pour être cancérigènes, provoquer des défauts congénitaux et d'autres dangers en matière de reproduction.



**AVERTISSEMENT**

L'émission du moteur de ce matériel contient des produits chimiques que l'Etat de Californie considère être cancérigènes, provoquer des défauts congénitaux et d'autres dangers en matière de reproduction.

**California Advertencia**  
**de la Proposicion 65**

El estado de California hace saber que los gases de escape de los motores diesel y algunos de sus componentes producen cáncer, defectos de nacimiento y otros daños en el proceso de reproducción humana.



**ADVERTENCIA**

El estado de California hace saber que los gases de escape de este producto contienen productos químicos que producen cáncer, defectos de nacimiento y otros daños en el proceso de reproducción humana.



## IMPORTANT MESSAGE

Thank you for purchasing this Jacobsen product. You have purchased a world class mowing product, one of the best designed and built anywhere.

This machine comes with an Operation and Safety Manual and a separate Setup, Parts and Maintenance Manual. The useful life and good service you receive from this machine depends to a large extent on how well you read and understand these manuals. Treat your machine properly, lubricate and adjust it as instructed, and it will give you many years of reliable service.

Your safe use of this Jacobsen product is one of our prime design objectives. Many safety features are built in, but we also rely on your good sense and care to achieve accident-free operation. For best protection, study the manuals thoroughly. Learn the proper operation of all controls. Observe all safety precautions. Follow all instructions and warnings completely. Do not remove or defeat any safety features. Make sure those who operate this machine are as well informed and careful in its use as you are.

See a Jacobsen dealer for any service or parts needed. Jacobsen service ensures that you continue to receive the best results possible from Jacobsen' products. You can trust Jacobsen replacement parts because they are manufactured with the same high precision and quality as the original parts.

Jacobsen designs and builds its equipment to serve many years in a safe and productive manner. For longest life, use this machine only as directed in the manuals, keep it in good repair and follow safety warnings and instructions. You'll always be glad you did.

**Jacobsen, a Textron Company**  
**One Bob Cat Lane**  
**Johnson Creek, WI 53038-0469**

TABLE OF CONTENTS	FIGURES	PAGE
SAFETY .....		2
ASSEMBLY/SET-UP INSTRUCTIONS .....		3, 4
PARTS SECTION .....		5
36" EC SIDE DISCHARGE DECK .....	FIGURE 1 .....	6, 7
36" EC REAR DISCHARGE DECK .....	FIGURE 2 .....	8, 9
CASTER ASSY-FIXED DECKS .....	FIGURE 3 .....	10, 11
SPINDLE ASSEMBLY .....	FIGURE 4 .....	12, 13
DECALS .....	FIGURE 5 .....	14, 15
OPTIONAL GRASSCATCHER (970319) .....	FIGURE 6 .....	16, 17



**NOTICE !!!**

Unauthorized modifications may present **extreme** safety hazards to operators and bystanders and could also result in product damage.

Jacobsen, a Textron Company strongly warns against, rejects and disclaims any modifications, add-on accessories or product alterations that are not designed, developed, tested and approved by Jacobsen Engineering Department. Any Jacobsen product that is altered, modified or changed in any manner not specifically authorized after original manufacture—including the addition of “after-market” accessories or component parts not specifically approved by Jacobsen—will result in the Jacobsen Warranty being voided.

Any and all liability for personal injury and/or property damage caused by any unauthorized modifications, add-on accessories or products not approved by Jacobsen will be considered the responsibility of the individual(s) or company designing and/or making such changes. Jacobsen will vigorously pursue full indemnification and costs from any party responsible for such unauthorized post-manufacture modifications and/or accessories should personal injury and/or property damage result.



This symbol means:  
**ATTENTION!**  
**BECOME ALERT!**

Your safety and the safety of others is involved.

**Signal word definitions:**

The signal words below are used to identify levels of hazard seriousness. These words appear in this manual and on the safety labels attached to Jacobsen machines. For your safety and the safety of others, read and follow the information given with these signal words and/or the symbol shown above.

**⚠ DANGER**

**DANGER** indicates an imminently hazardous situation which, if not avoided, **WILL** result in death or serious injury.

**⚠ WARNING**

**WARNING** indicates a potentially hazardous situation which, if not avoided, **COULD** result in death or serious injury.

**⚠ CAUTION**

**CAUTION** indicates a potentially hazardous situation which, if not avoided, **MAY** result in minor or moderate injury. It may also be used to alert against unsafe practices or property damage.

**CAUTION**

**CAUTION** used without the safety alert symbol indicates a potentially hazardous situation which, if not avoided, **MAY** result in property damage.



**MODEL NUMBER:** This number appears on sales literature, technical manuals and price lists.

**SERIAL NUMBER:** This number appears only on your mower. It contains the model number followed consecutively by the serial number. Use this number when ordering parts or seeking warranty information.

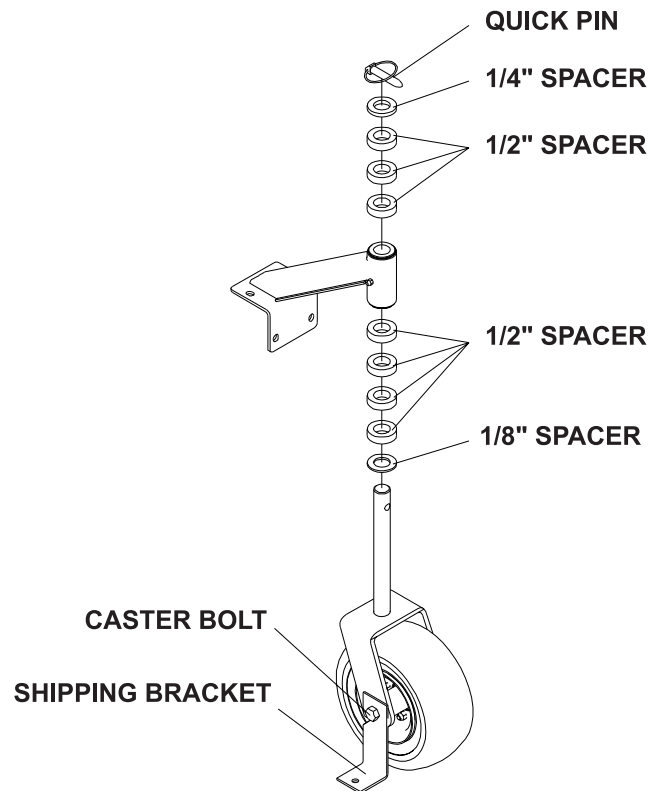


### FIXED CUTTERDECK ATTACHMENT

1. Remove the cutterdeck from the crate.
2. Unbolt the caster wheels and the shipping brackets from the crate.
3. Remove the shipping bracket from the caster wheel by loosening the caster bolt and sliding the shipping bracket off and retighten caster bolt.
4. Remove quick pin and remove the appropriate number of spacers for the desired height of cut. See height of cut chart below.

**NOTE:** Height of cut chart is also located on bottom of belt cover or in the Operation & Safety Manual.

5. Repeat for other caster wheel assembly.

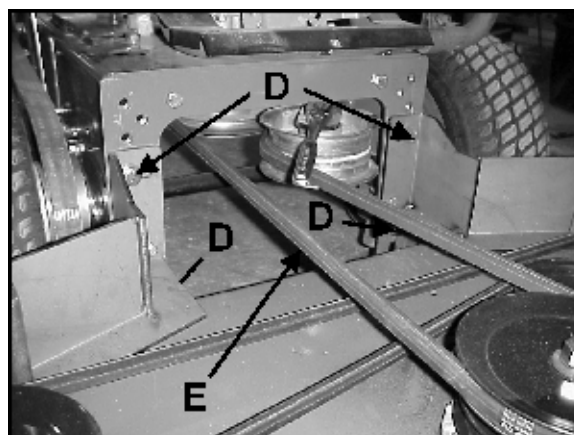
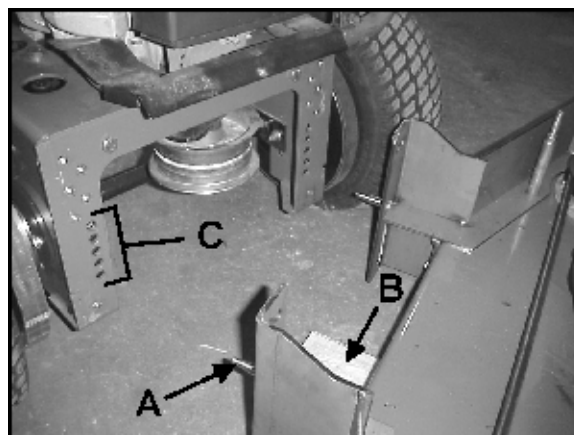


CUTTING HEIGHT		A (1/8") B (1/4") C (1/2")			DECK PIN POSITION		4109661 NUMBER OF SPACERS BETWEEN SPINDLE AND BLADE (1/4" THICK)
IN	MM	A	B	C			
1.375	35	1	1	0	5		2
1.625	41	1	1	0	5		1
1.875	48	1	1	0	5		0
2.125	54	1	0	2	4		2
2.375	60	1	0	2	4		1
2.625	67	1	0	2	4		0
2.875	73	1	1	3	3		2
3.125	79	1	1	3	3		1
3.375	86	1	1	3	3		0
3.625	92	1	0	5	2		2
3.875	98	1	0	5	2		1
4.125	105	1	0	5	2		0
4.375	111	1	1	6	1		2
4.625	118	1	1	6	1		1



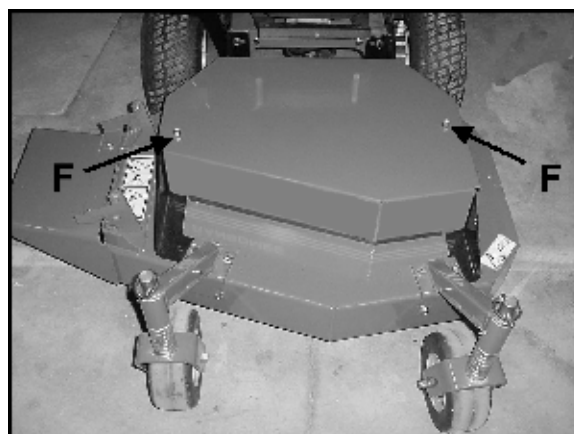
6. Remove belt cover and set aside.
7. Block the rear of the cutterdeck with the appropriate height block for the desired height of cut **B**. See Support Block Chart below.

CUTTING HEIGHT	HOLE POSITION ON ENGINE DECK*	BLOCK HEIGHT AT REAR OF DECK (B)
1.375" - 1.625"	5	1.25"
1.875" - 2.375"	4	2.00"
2.625" - 3.125"	3	2.75"
3.375" - 3.875"	2	3.50"
4.125" - 4.625"	1	4.25"
* Position 1 is the highest hole on the engine deck.		



8. Position the power unit behind the cutterdeck.
9. Move the power unit towards the cutterdeck until the guide pins **A** engage the appropriate hole **C** on the power unit for the desired height of cut. Fasten with (4) M12-1.75 X 30 bolts at **D**.
10. Loop the PTO belt **E** around the electric clutch pulley. Using a 3/8" ratchet wrench or 3/8" breaker bar rotate the PTO belt idler while looping the PTO belt around the cutterdeck pulley.

11. Reinstall belt cover and fasten in place with nuts **F**.
12. Remove support block from the rear of cutterdeck.
13. Remove support from the rear of the power unit.





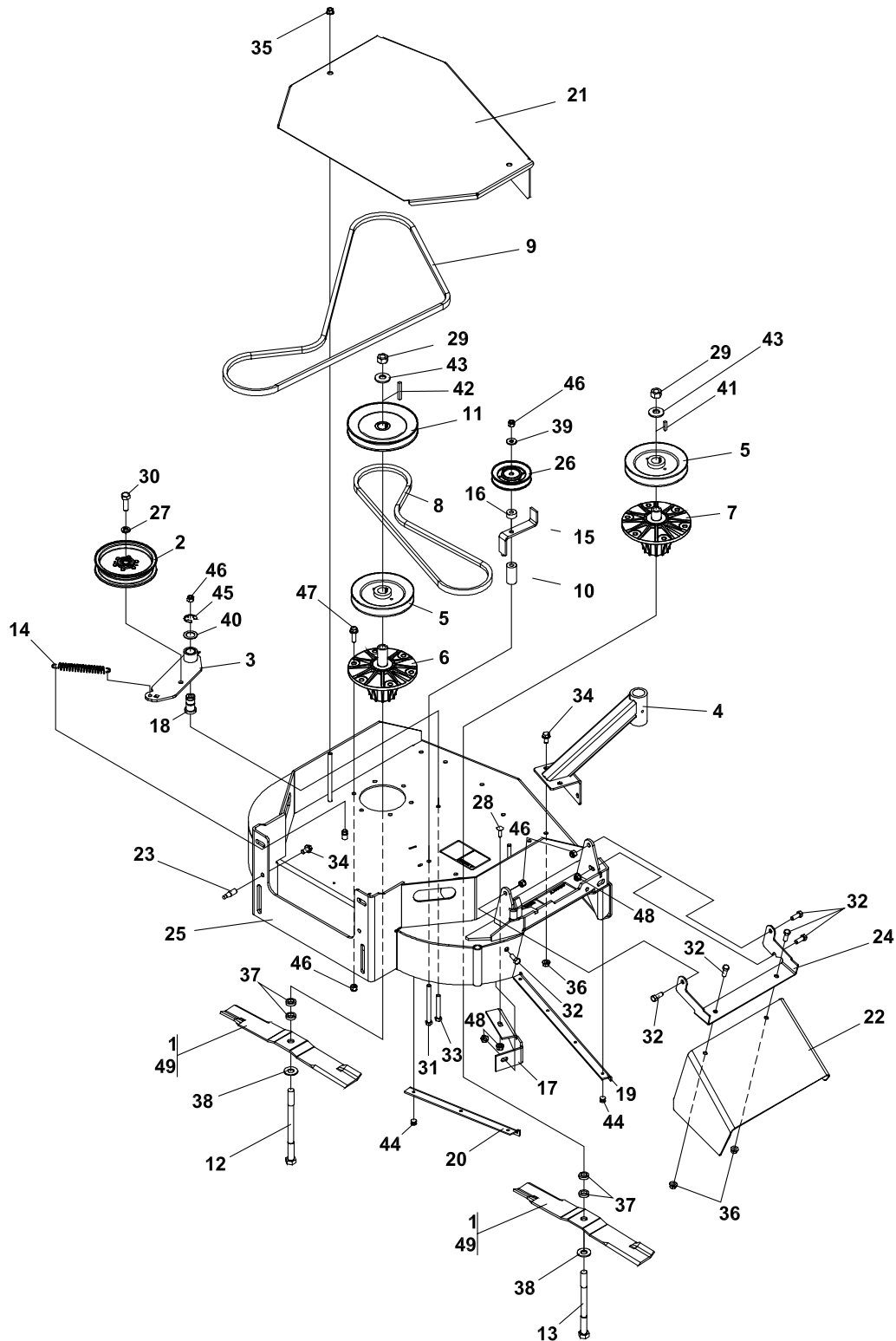
# **PARTS SECTION**



# 36" EC SIDE DISCHARGE DECK

FIGURE 1

EC  
Midsize  
Decks





# EC Midsize Decks

## 36" EC SIDE DISCHARGE DECK

FIGURE 1

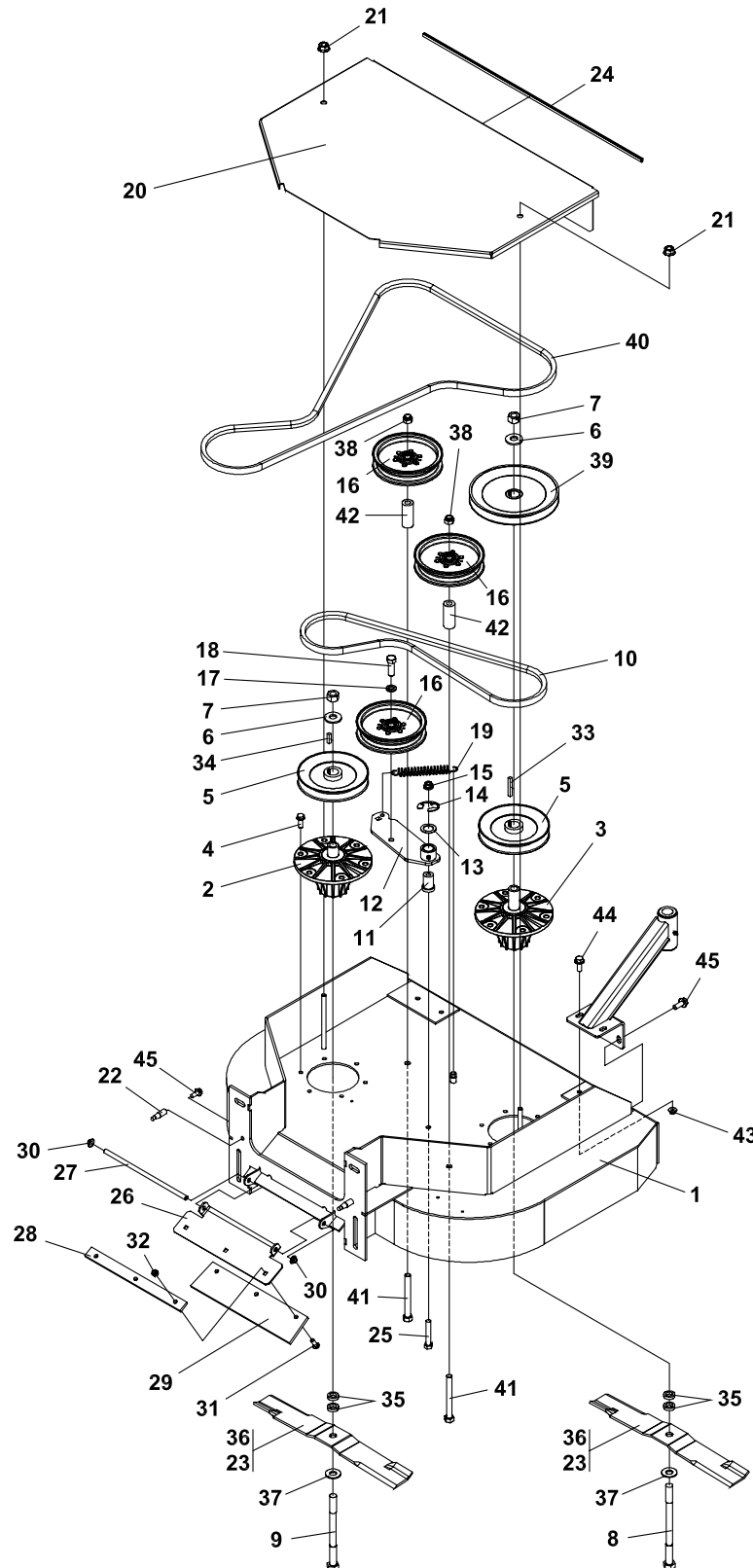
ITEM	PART NO.	DESCRIPTION	QTY	ITEM	PART NO.	DESCRIPTION	QTY
1-1	112243-02	BLADE 18.00 OFFST	2	1-41	64164-12	KEY-1/4X1/4X1 SQ END	1
1-2	128169	PULLEY, IDLER 5.50	1	1-42	64164-13	1/4X1/4X2 SQ KEY	1
1-3	2186138.7	WLDMT-DECK IDLER	1	1-43	64209-03	SPRING WASHER.67 ID	2
1-4	2306029	S CASTER SUPPORT	2	1-44	64215-12	RIVET-POP IFI #86	7
1-5	2308140	PULLEY-ENGINE	2	1-45	64221-04	E-RING.875	1
1-6	2721097	S-ASSY SPNDL 6 LNG	1	1-46	64229-03	LOCKNUT-NYLON 3/8-16	16
1-7	2721323	S-ASSY SPNDL 6 SHRT	1	1-47	64262-012	BLT-FLG HD 3/8-16 X 1-1/4	12
1-8	2721477	BELT-HB 56.75	1	1-48	64268-03	NUT-FL NYLON LOCK 3/8-16	3
1-9	2721478	BELT-HB 85.25	1	1-49	2722543-02	BLADE-18.00 ELIMINATOR	2
1-10	2721485	SPACER-IDLER	1			(OPTIONAL)	
1-11	2722161	PULLEY-6.75 EOD	1				
1-12	33049-02	BOLT-BLADE	1				
1-13	33049-05	BOLT-BLADE	1				
1-14	38219	SPRING-TENSION	1				
1-15	4115420.7	GUIDE-BELT	1				
1-16	4115424	SPCR-10.31 X 25.4 X 12.0	1				
1-17	4115864.7	BAFFLE-DISCHARGE	1				
1-18	4116661	PIN-PIVOT	1				
1-19	4119062.2	BRKT-EC FRONT DECK, RH	1				
1-20	4119063.2	BRKT-EC FRONT DECK, LH	1				
1-21	4119064.2	COVER-BELT, 36 FIXED	1				
1-22	4131477.2	CHUTE-DECK, 32-54 SD	1				
1-23	4119573	PIN-GUIDE	2				
1-24	4127148.2	BRKT-CHUTE SUPPORT EC	1				
1-25	4127209	S-36 DECK SD W/LABS EC	1				
1-26	48393	PULLEY-V IDLER	1				
1-27	64006-05	LOCKWSHR-HELICAL 1/2	1				
1-28	64018-3	BOLT-3/8-16X1 CARRIAGE	1				
1-29	64025-16	NUT-HEX 5/8-18	2				
1-30	64123-05	BLT-HEX 1/2-20X1-1/2	1				
1-31	64123-173	BLT-HEX 3/8-16X4-1/2	1				
1-32	64123-50	BOLT-HEX 3/8-16X1	6				
1-33	64123-88	BOLT, 3/8-16X2-3/4 HEX	1				
1-34	64139-21	BLT-WLF 3/8-16X3/4	10				
1-35	64268-03	NUT-FL NYLON LOCK 3/8-16	2				
1-36	64141-4	NUT-WLF 3/8-16	10				
1-37	64163-12	.635/.640X1.0X.25 WASH	4				
1-38	64163-16	WASHER-41/64 X 1, 3/8 X 12	2				
1-39	64163-31	WASHER, 25/64X1X12	1				
1-40	64163-65	WASHER-.890X1.375X18	1				



# 36" EC REAR DICHARGE DECK

FIGURE 2

EC  
Midsize  
Decks





# EC Midsize Decks

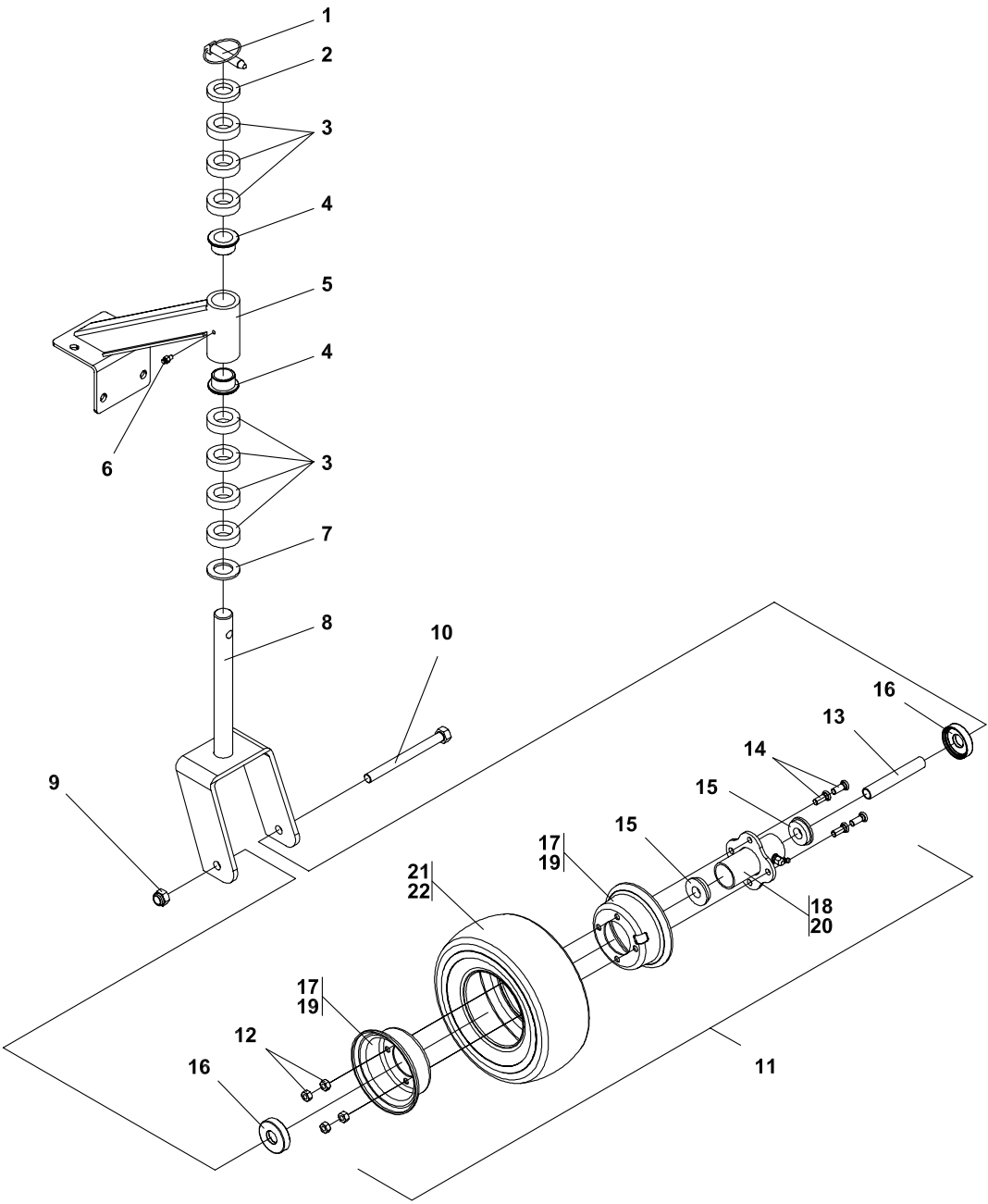
## 36" EC REAR DISCHARGE DECK

FIGURE 2

ITEM	PART NO.	DESCRIPTION	QTY	ITEM	PART NO.	DESCRIPTION	QTY
2-1	4115087	S-36 DECK RD W/LABS EC	1	2-38	64229-05	LOCKNUT, 1/2-13 NYLON	2
2-2	2721323	ASSY-SPINDLE SHORT (SEE FIGURE 5 FOR COMPONENTS)	1	2-39	2722161	PULLEY-6.75 EOD	1
2-3	2721097	ASSY-SPINDLE LONG (SEE FIGURE 5 FOR COMPONENTS)	1	2-40	2720815	BELT-PTO 48	1
2-4	64197-003	BLT-TDFM 3/8-16 X 1.00	12	2-41	64123-74	BLT-HEX 1/2-13 X 4-1/2	2
2-5	2308140	PULLEY-ENGINE	2	2-42	4115379	SPACER	2
2-6	64209-03	SPRING WASHER 0.67 ID	2	2-43	64141-4	NUT-WLF 3/8-16	4
2-7	64025-16	NUT-HEX 5/8-18	2	2-44	64139-18	BLT-WLF 3/8-16 X 1-1/4	4
2-8	33049-02	BOLT-BLADE LONG	1	2-45	64139-21	BLT-WLF 3/8-16 X 3/4	6
2-9	33049-05	BOLT-BLADE SHORT	1				
2-10	2721477	BELT-HB 56.75	1				
2-11	4116661	PIN-PIVOT	1				
2-12	2186138.7	WLDMT-DECK IDLER	1				
2-13	64163-65	WSHR.890 X 1.375 X 18GA	1				
2-14	64221-04	E-RING.875	1				
2-15	64229-03	LOCKNUT-NYLON 3/8-16	1				
2-16	128169	PULLEY, IDLER 5.50	3				
2-17	64006-05	LOCKWSHR-HELICAL 1/2	1				
2-18	64123-05	BLT-HEX 1/2-20X1-1/2	1				
2-19	38219	SPRING-TENSION	1				
2-20	4114377.2	COVER-BELT 36RD	1				
2-21	64268-03	NUT-FL NYLON LOCK 3/8-16	2				
2-22	4119573	PIN-GUIDE	2				
2-23	2722543-02	BLADE-18.00 ELIMINATOR (OPTIONAL)	2				
2-24	108074-17	S-CHANNEL FLEX TRIM 27" (108074-17 IS A SERVICEABLE LENGTH OF 38.6")	1				
2-25	64205-17	BLT-MET M10-1.50X75	1				
2-26	4114466.2	DEFLECTOR 36RD	1				
2-27	4114464	ROD-HINGE 36RD	1				
2-28	4114476.2	RETAINER-FLAP	1				
2-29	4114465	FLAP-DEFLECTOR 36RD	1				
2-30	64175-04	PUSHNUT 3/8 DIA	2				
2-31	64018-15	BLT-CRG 5/16-18 X 1	3				
2-32	64229-02	LOCKNUT-NYLON 5/16-18	3				
2-33	64164-13	1/4X1/4X2 SQ KEY	1				
2-34	64164-12	KEY-1/4X1/4X1 SQ END	1				
2-35	64163-12	.635/.640X1.0X.25 WASH	4				
2-36	112243-02	BLADE 18.00 OFFST LLFT	2				
2-37	64163-16	WASHER	2				



FIGURE 3





# EC Midsize Decks

## CASTER ASSY-FIXED DECKS

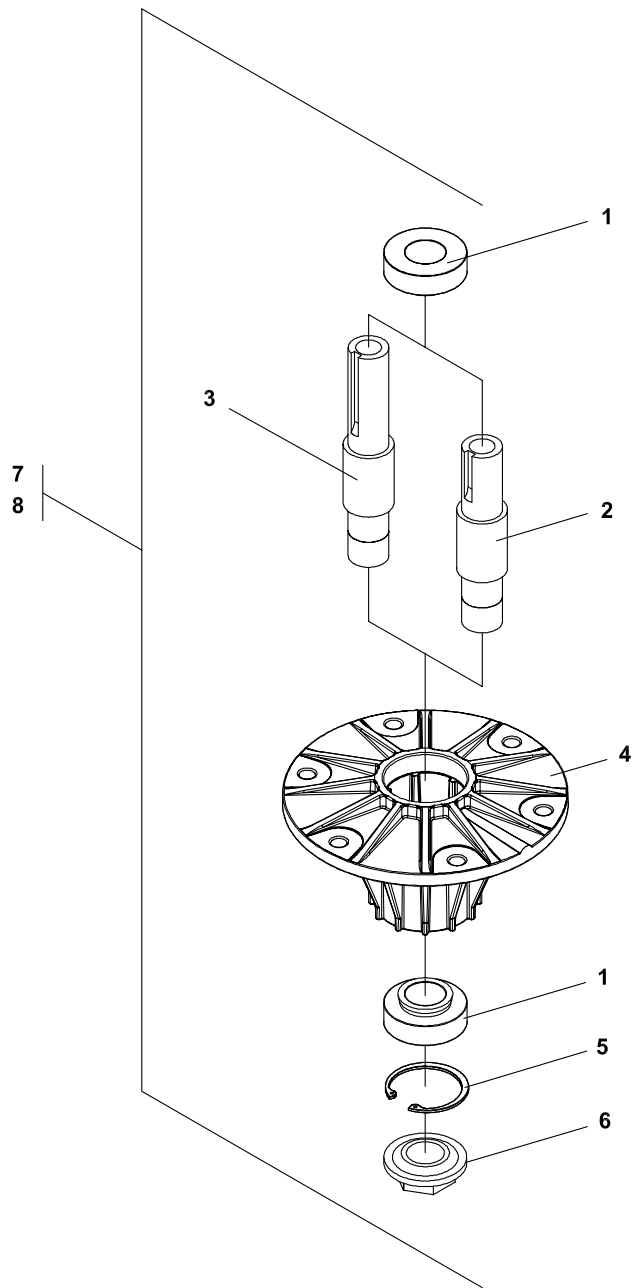
FIGURE 3

ITEM	PART NO.	DESCRIPTION	QTY	ITEM	PART NO.	DESCRIPTION	QTY
	4115465	ASSY-CASTER 9IN EC (INCLUDES ITEMS 1-3, 7-11 & 13 QTYs LISTED) (NOTE 2 ASSYS REQUIRED PER MACHINE)	2				
3-1	64173-04	QUICK PIN	1				
3-2	64163-07	1-1/32X1-3/4X1/4 WASH	1				
3-3	64163-22	1-1/32X1-3/4X1/2 WASHR	7				
3-4	4129801	BUSHING-FLANGED	2				
3-5	2306029	S CASTER SUPPORT (INCLUDES ITEMS 4 & 6, QTYs LISTED)	1				
3-6	85010N	ZERK GREASE FITTING	1				
3-7	64163-84	WSHR-1.015 X 1.75 X .125	1				
3-8	2721484.7	WLDMT-CASTER YOKE	1				
3-9	64229-05	LOCKNUT-NYLON 1/2-13	1				
3-10	64123-166	BLT-HEX 1/2-13X5-1/2	1				
		OPTIONAL FLAT PROOF WHEEL & TIRE					
3-11	4114430	ASSY-WHEEL 9" CAREFREE (WITH 2.75 DIA. BOLT CIRCLE) (INCLUDES ITEMS 12-18, 21 & 22)	1				
		(WITH 2.81 DIA. BOLT CIRCLE) (INCLUDES ITEMS 12-16 & 19-22)					
3-12	64141-1	NUT-WLF 5/16-24	4				
3-13	2722230-04	SPANNER	1				
3-14	64123-01	BLT-HEX 5/16-24X3/4	4				
3-15	2722682	BEARING-9" WHEEL	2				
3-16	2722591	SPACER-3/4 INCH BRG	2				
3-17	2720645	S WHEEL HALF	2				
3-18	2722680	HUB-9"WHEEL W/BEARINGS	1				
3-19	4132615	S-WHEEL HALF	2				
3-20	4132616	ASSY-HUB W/BEARINGS	1				
3-21	*38505	S TUBE-9x3.50-4	1				
3-22	4114430-01	S-TIRE 9 FLATFREE	1				

\* NOT ILLUSTRATED



**FIGURE 4**





# EC Midsize Decks

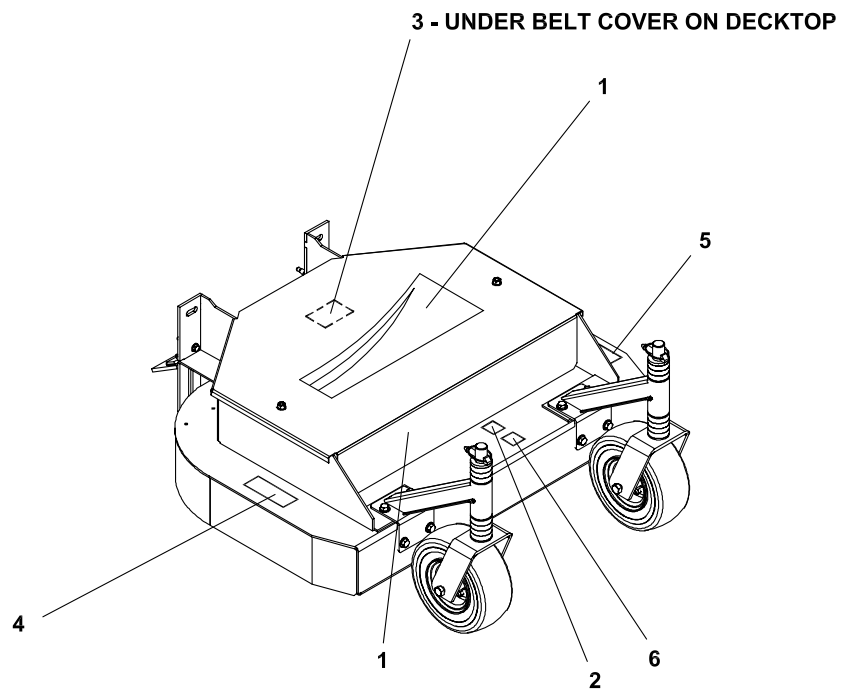
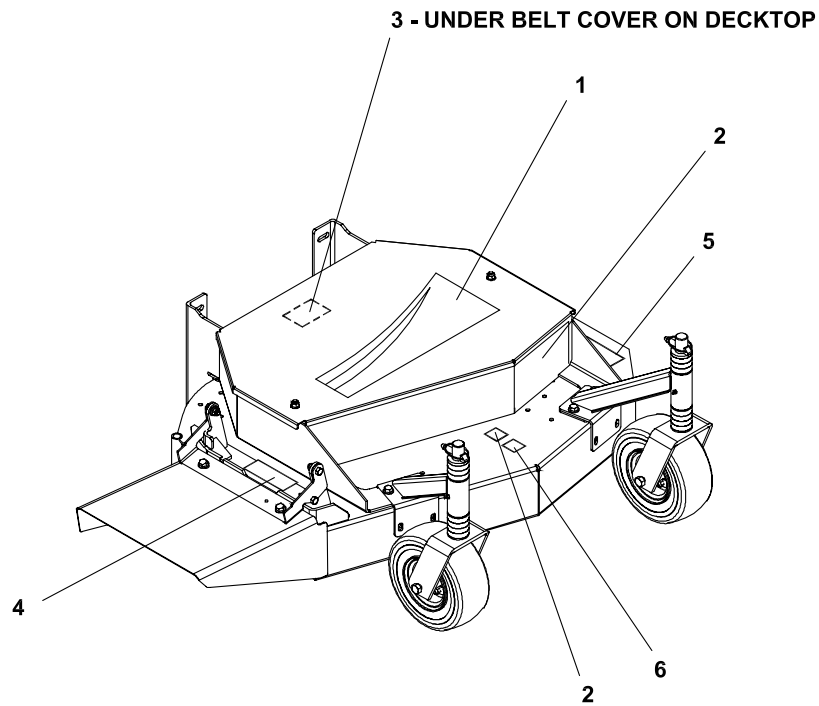
## SPINDLE ASSEMBLY

FIGURE 4

ITEM	PART NO.	DESCRIPTION	QTY	ITEM	PART NO.	DESCRIPTION	QTY
4-1	38348-01	BEARING-SPINDLE SEALED	2				
4-2	33179-02	SPINDLE-SHORT (USED IN ITEM 8)	1				
4-3	33179-01	SPINDLE-LONG (USED IN ITEM 7)	1				
4-4	2721096	HOUSING-SPINDLE 6 HOLE	1				
4-5	64144-38	SNAP-RING	1				
4-6	38315	NUT-SPINDLE	1				
4-7	2721097	ASSY-SPINDLE LONG (INCLUDES ITEMS 1, 3, 4-6)	1				
4-8	2721323	ASSY-SPINDLE SHORT (INCLUDES ITEMS 1, 2, 4-6)	1				



FIGURE 5





# EC Midsize Decks

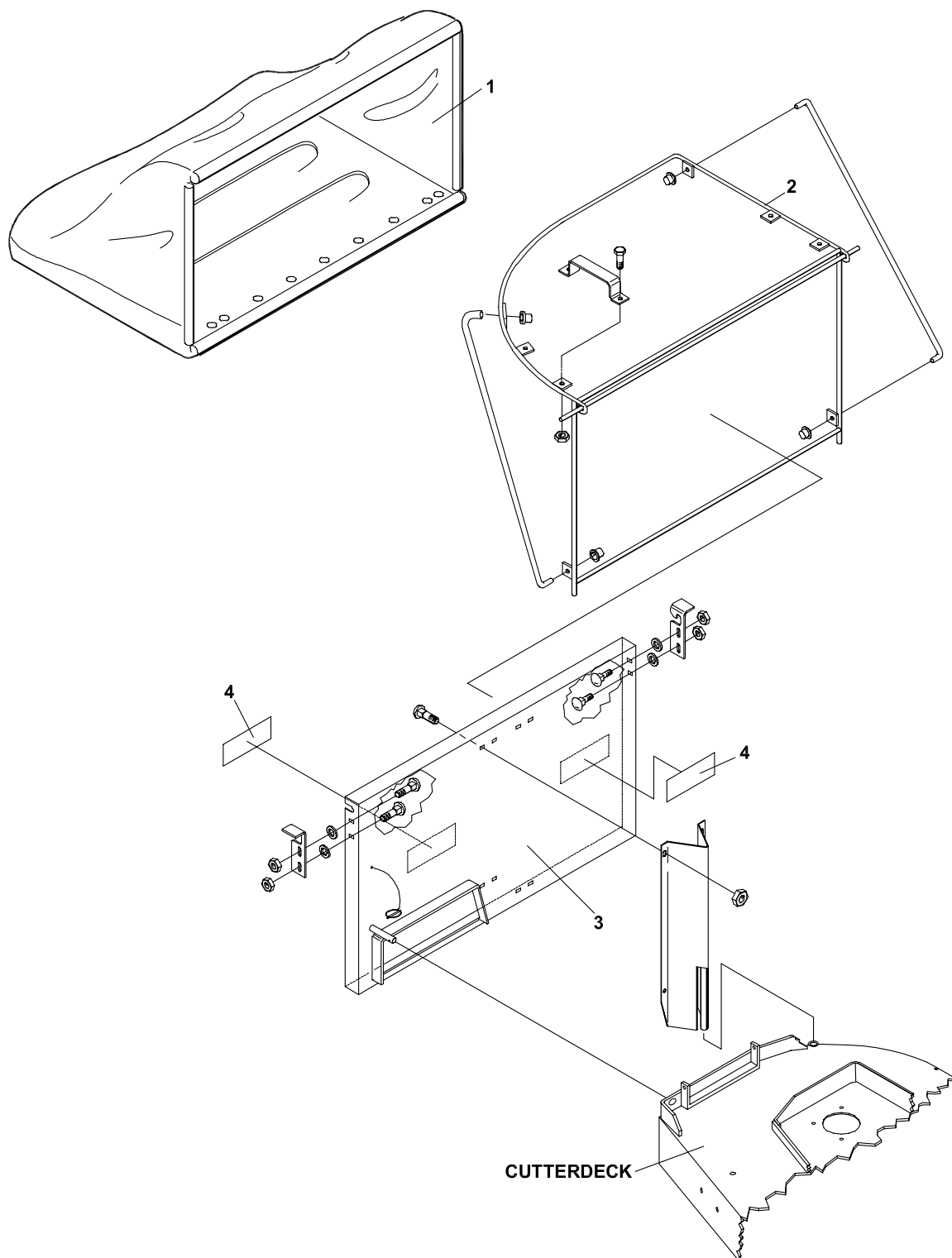
## DECALS

FIGURE 5

ITEM	PART NO.	DESCRIPTION	QTY	ITEM	PART NO.	DESCRIPTION	QTY
5-1	4127946	LABEL-DK CVR-RANSOMES	1				
	4124250	LABEL-DK CVR, BUNTON	1				
5-2	2000646	LABEL-CE 95	1				
5-3	2000638	LABEL-CON WASHER EEC	1				
5-4	2000760	LABEL-HANDS/ROCKS EC	1				
5-5	2000655	LABEL-READ OPRTRS EEC	1				
5-6	009034760	LABEL-EEC NOISE 100	1				



FIGURE 6





# EC Midsize Decks

## OPTIONAL GRASSCATCHER (970319)

FIGURE 6

ITEM	PART NO.	DESCRIPTION	QTY	ITEM	PART NO.	DESCRIPTION	QTY
6-1	4135876	BAG, 3.75 BU CATCHR	1				
6-2	4135875	FRM-ROD 3.75 BU CATCHR	1				
6-3	4135874	PLT-BACK 3.75 BU CATCHR	1				
6-4	2000677	LABEL-DANGER/WARNING	2				



## **World Class Quality, Performance And Support**



Equipment from Jacobsen, a Textron company, is built to exacting standards ensured by ISO 9001 and ISO 14001 registration at all our manufacturing locations.

A worldwide dealer network and factory-trained technicians backed by Textron Parts Xpress provide reliable, high-quality product support.



---

**BOB-CAT BROWER BUNTON CUSHMAN RYAN STEINER**