



BUNTON[®]

TECHNICAL MANUAL

21" PUSH MOWER

MODEL: 622102



WARNING: If incorrectly used this machine can cause severe injury. Those who use and maintain this machine should be trained in its proper use, warned of its dangers and should read the entire manual before attempting to set up, operate, adjust or service the machine.

BUNTON

TEXTRON
TURF CARE AND SPECIALTY PRODUCTS

2721211 REV00



21" PUSH MOWER

IMPORTANT MESSAGE

Thank you for purchasing this Bunton product. You have purchased a world class mowing product, one of the best designed and built anywhere.

This machine comes with a Technical Manual. The useful life and good service you receive from this machine depends to a large extent on how well you read and understand this manual. Treat your machine properly, lubricate and adjust it as instructed, and it will give you many years of reliable service.

Your safe use of this Bunton product is one of our prime design objectives. Many safety features are built in, but we also rely on your good sense and care to achieve accident-free operation. For safest operation, study the manual thoroughly. Learn the proper operation of all controls. Observe all safety precautions. Follow all instructions and warnings completely. Do not remove or defeat any safety features. Make sure those who operate this machine are as well informed and careful in its use as you are.

See a Bunton dealer for any service or parts needed. Bunton service ensures that you continue to receive the best results possible from your Bunton products. You can trust Bunton replacement parts because they are manufactured with the same high precision and quality as the original parts.

Bunton designs and builds its equipment to serve many years in a safe and productive manner. For longest life, use this machine only as directed in the manual, keep it in good repair and follow safety warnings and instructions. You'll always be glad you did.

Textron Turf Care And Specialty Products
One Bob Cat Lane
Johnson Creek, WI 53038-0469

CONTENTS	PAGE
Introduction	2
Labels	3
General Instructions	4,5
Assembly & Set-Up	6-9
Controls/Operation/Maintenance	10
Cutting Height	11
Blade maintenance	12
Optional grass catchers	13
Specifications	14
Fastener Torques	15
Bunton Warranty	16,17
Parts - Handle Assembly	18,19
Parts - Shields, Blade & Decals	20,21
Parts - Wheel Assembly	22,23
Parts - Optional Grass Catcher	24,25
Cross Reference	26



NOTICE !!!

Unauthorized modifications may present **extreme** safety hazards to operators and bystanders and could also result in product damage.

Textron Turf Care And Specialty Products strongly warns against, rejects and disclaims any modifications, add-on accessories or product alterations that are not designed, developed, tested and approved by Textron Turf Care And Specialty Products Engineering Department. Any Textron Turf Care And Specialty Products product that is altered, modified or changed in any manner not specifically authorized after original manufacture—including the addition of “aftermarket” accessories or component parts not specifically approved by Textron Turf Care And Specialty Products—will result in the Textron Turf Care And Specialty Products Warranty being voided.

Any and all liability for personal injury and/or property damage caused by any unauthorized modifications, add-on accessories or products not approved by Textron Turf Care And Specialty Products will be considered the responsibility of the individual(s) or company designing and/or making such changes. Textron Turf Care And Specialty Products will vigorously pursue full indemnification and costs from any party responsible for such unauthorized post-manufacture modifications and/or accessories should personal injury and/or property damage result.



This symbol means:
ATTENTION!
BECOME ALERT!

Your safety and the safety of others is involved.

Signal word definitions:

The signal words below are used to identify levels of hazard seriousness. These words appear in this manual and on the safety labels attached to Ransomes machines. For your safety and the safety of others, read and follow the information given with these signal words and/or the symbol shown above.

DANGER

DANGER indicates an imminently hazardous situation which, if not avoided, **WILL** result in death or serious injury.

WARNING

WARNING indicates a potentially hazardous situation which, if not avoided, **COULD** result in death or serious injury.

CAUTION

CAUTION indicates a potentially hazardous situation which, if not avoided, **MAY** result in minor or moderate injury. It may also be used to alert against unsafe practices or property damage.

CAUTION

CAUTION used without the safety alert symbol indicates a potentially hazardous situation which, if not avoided, **MAY** result in property damage



SERIAL TAG

MODEL NUMBER: This number appears on sales literature, technical manuals and price lists.

SERIAL NUMBER: This number appears only on your mower. It contains the model number followed consecutively by the serial number. Use this number when ordering parts or seeking warranty information.

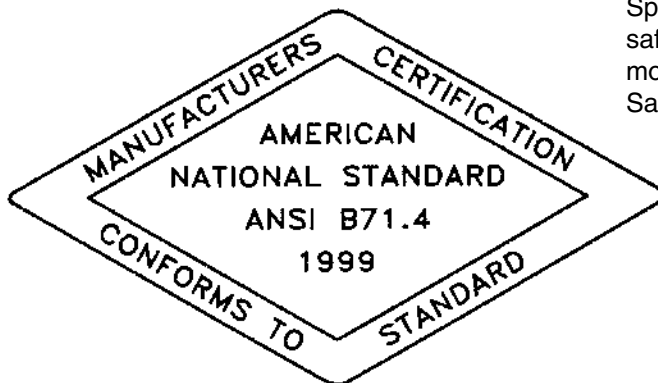


21" PUSH MOWER

LABELS



Buyer's assurance that models of this mower are periodically tested by Textron Turf Care And Specialty Products, and found to comply with the safety standard for walk-behind power lawn mowers issued by the U.S. Consumer Product Safety Commission.



Buyer's assurance that a model of this mower has been tested by Textron Turf Care And Specialty Products, and found to conform with the safety specifications for power lawn mowers published by the American National Standards Institute. Use of non-certified attachments or accessories may void the mower certification.





Before using mower for the first time, check engine oil and lubricate all points.

TRAINING

- Read the operator's manual carefully. All rotary grass cutters are potentially dangerous. No person should operate the machine unless they are familiar with the controls and the proper use of the machine.
- Never allow children, unskilled or untrained persons to operate machine. Local regulations may restrict the age of the operator.
- Keep the area of operation clear of all persons, particularly small children, and pets.
- Keep in mind that the operator or user is responsible for accidents or hazards occurring to other people or their property.



PREPARATION

- Do not operate the equipment when barefoot or wearing open sandals. Always wear substantial footwear and long trousers.
- Thoroughly inspect the area where the equipment is to be used and remove all objects which may be thrown by the machine.
- Gasoline is highly flammable. Store gasoline only in a container specifically designed for gasoline storage in a cool, dry place away from sparks and open flame.
- When refueling or checking fuel level:
 - Stop engine. Allow to cool.
 - Refuel outdoors only.
 - Do not smoke.
 - Use a funnel. Do not overfill. Clean up spills and move machine away from spills before starting.
 - Replace caps tightly.
- Replace faulty muffler.
- Before using, always visually inspect to see that the blade, blade bolt and blade adaptor are not worn or damaged. Replace worn or damaged blade and bolts.
- Never attempt to make adjustments while the engine (motor) is running.
- Never operate the equipment in wet grass. Always be sure of your footing; keep a firm hold on the handle and walk; never run.



OPERATION

- Do not operate the engine in a confined space where dangerous carbon monoxide fumes can collect.
- Mow only in daylight or in good artificial light.
- Always be sure of your footing on slopes.
- Walk, never run.
- Do not mow excessively steep slopes.
- Use extreme caution when reversing or pulling the mower towards you. Be sure the area behind is clear.
- Stop the engine if the mower has to be tilted for transportation, when crossing surfaces other than grass and when transporting the mower to and from the area to be mowed.
- Never operator the mower without proper guards, plates, grass catcher or other safety protective devices in place.
- Do not change the engine governor settings or overspeed the engine.
- Start the engine carefully according to instructions and with feet well away from the blade.
- Do not start the engine when standing in front of the discharge chute.
- Do not put hands or feet near or under rotating parts. Keep clear of the discharge opening at all times.
- Never pick up or carry a mower while the engine is running.
- Stop the engine, wait for the blade to come to a complete stop, and disconnect the spark plug wire:
 - before clearing blockages or unclogging chute;
 - before checking, cleaning or working on the mower;
 - after striking a foreign object. Inspect the mower for damage and make repairs before restarting and operating the mower;
 - if mower starts to vibrate abnormally (check immediately for the cause). Vibration is generally a warning of trouble.
- Stop the engine:
 - whenever you leave the mower;
 - before refuelling.



21" PUSH MOWER

GENERAL INSTRUCTIONS

- Stop the engine and wait until the blade comes to a complete stop before removing the grass catcher or unclogging chute.
- Reduce the throttle setting during engine shut down, and if engine is provided with a shut-off valve, turn the fuel off at the conclusion of mowing.
- Keep washout ports and other mower-housing service openings closed when mowing.
- Do not operate where flying debris may injure people or damage property. Keep pets at a safe distance.
- Do not use if there are any doubts about safety.
- Replace operators manual if lost or damaged.
- Obey safety instructions. Failure to do so may cause injury to yourself or others.
- Do not defeat interlocks. Check operation daily.



OPERATING ON SLOPES

USE EXTRA CARE WHEN WORKING ON SLOPES

- With walk behind machines, **always** mow across slopes, **not** up and down. With ride-on machines, **always** mow up and down slopes, **not** across.
- Be alert to dips and rises which change the general slope. Watch for holes, rocks and roots in the terrain and other hidden hazards. Keep away from drop offs. Avoid ground conditions which will cause the machine to slide.
- If the operator is uncomfortable or unsure of the machines stability, operation on these slopes should cease immediately.
- The ultimate responsibility for safe operation on slopes, rests with the operator.
- Use lower speeds and exercise extreme caution on slopes and especially in sharp turns to prevent tipping and loss of control. Use extra caution when changing direction on slopes.

MAINTENANCE AND ADJUSTMENTS

- Disconnect spark plug wire before doing any maintenance.
- Particular care must be taken when adjusting the carburetor while running. Keep hands and feet clear.
- When working underneath lifted parts or machines, make sure adequate support is provided.
- Do not dismantle the machine without releasing or restraining forces which can cause parts to move suddenly.
- Keep all nuts, bolts and screws tight to be sure the equipment is in working condition.
- Check the grass catcher frequently for wear and deterioration.
- Replace worn or damaged parts for safety.

STORAGE

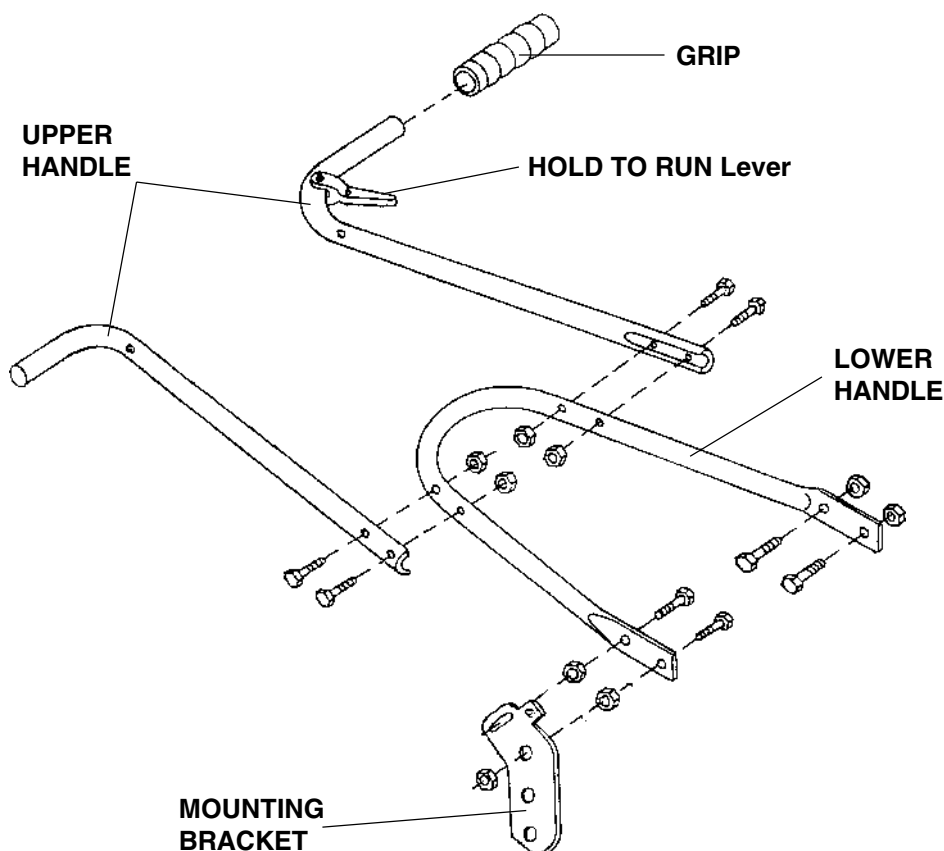
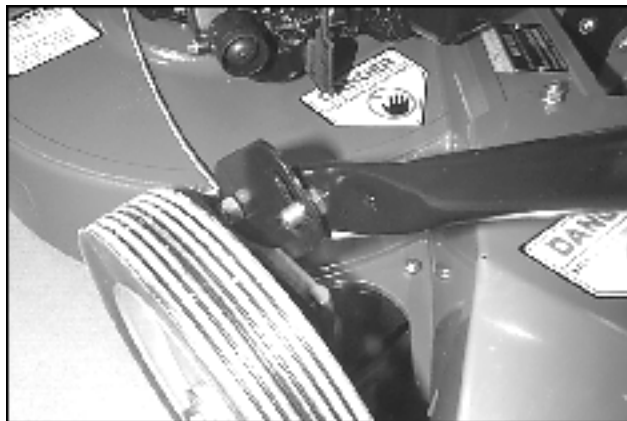
- Never store the equipment with gasoline in the tank inside a building where fumes may reach an open flame or spark.
- Allow the engine to cool before storing in any enclosure.
- To reduce the fire hazard, keep the engine, muffler and gasoline storage area free of grass, leaves or excessive grease.
- If the fuel tank has to be drained, this should be done outdoors.
- Use only replacement parts supplied by the original manufacturer.



Remove spark plug wire before working on mower.

All references to right or left are as viewed from the operating position.

1. **LOWER HANDLE** - Install four 3/8-24 X 1" bolts in the lower handle facing outward. Secure with four jam nuts. Tighten securely.
2. Squeeze the lower handle together and snap it into the four holes in the handlebar mounting brackets. Attach a 3/8-24 locknut on each of the two LOWER bolts, as shown. Tighten as far as possible without causing the handle to bind when pivoted.
3. Assemble the upper handle to the lower handle as shown with four 5/16-18 X 1-1/2" bolts and hex locknuts. Do not tighten locknuts securely yet.
4. Install grips on each of the upper handles.

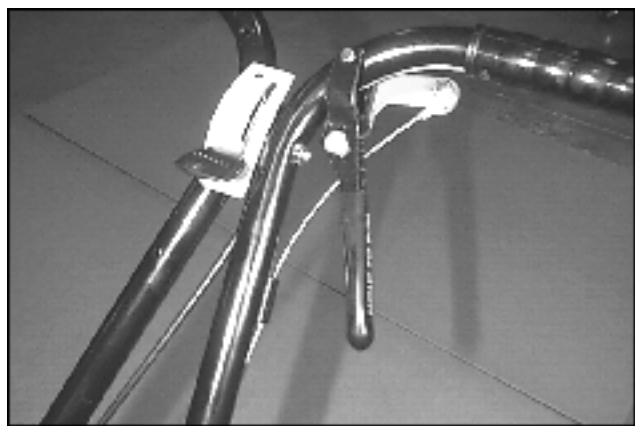
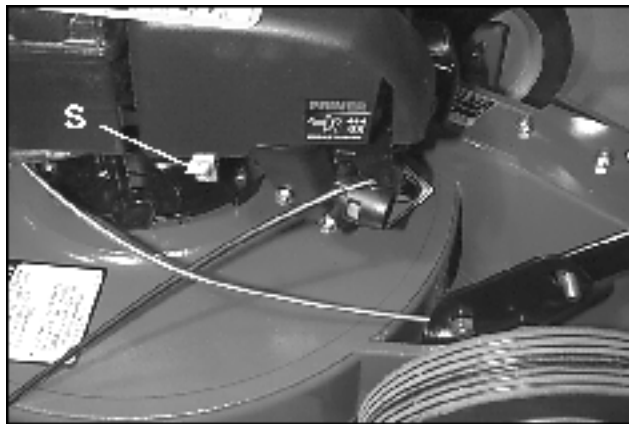




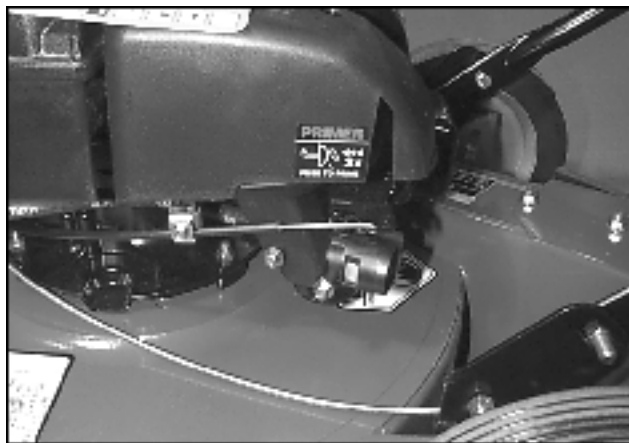
21" PUSH MOWER

ASSEMBLY & SETUP

5. **THROTTLE CABLE** – Connect the throttle cable to the engine by hooking the 'Z' bend of the inner wire to the governor control lever. Route the cable around the front of the engine and under the oil filter. Position the control between the upper handle tubes and secure with a 1/4-20 X 2-1/2 bolt and lock nut. Tighten the 4 nuts left loose in step 3.
6. Set the throttle control to the "FAST" position and then back off a 1/8". At the engine end of the cable, pull on the cable housing to move the engine governor lever all the way to the "FAST" position and then secure the cable housing with the clamp on the engine.



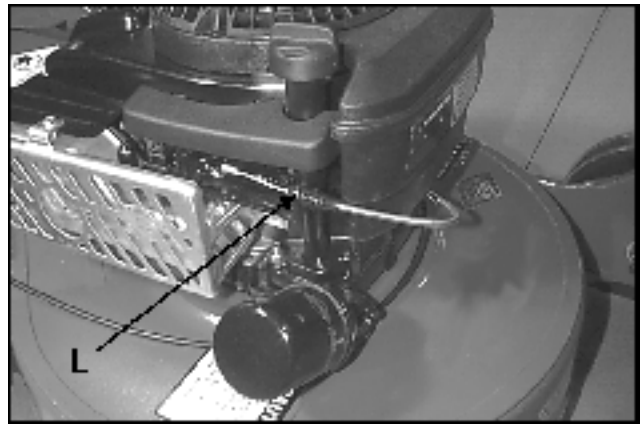
**THROTTLE CLAMPED FOR
ASSEMBLY TO HANDLE**



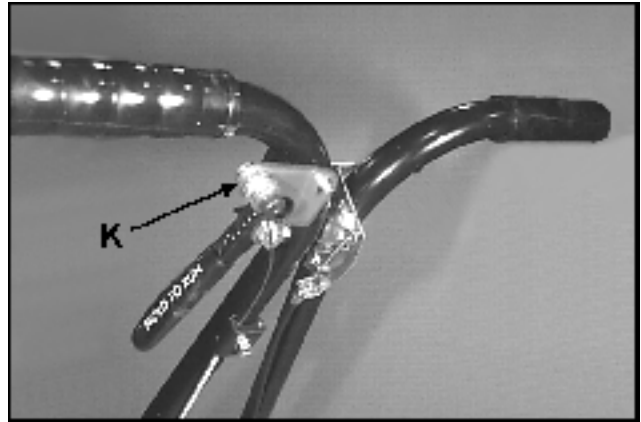
**COMPLETED THROTTLE CABLE
ASSEMBLY TO ENGINE**



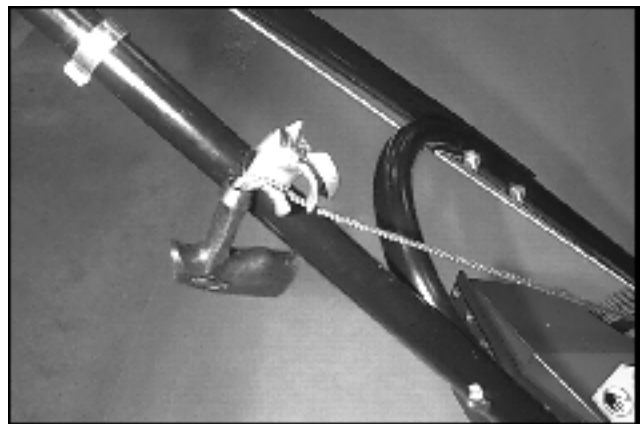
7. Hook the 'Z' bend end of the brake cable into engine brake control arm which is located on the front right hand side of the engine. Snap the plastic fastener on the cable into the flange **L** on the engine. Route the cable around the front of the engine.



8. **BRAKE CABLE** - Secure the brake cable to the upper left handle with a 1/4-20 X 5/8" thread-forming bolt. Attach the eye of the cable wire to the "HOLD TO RUN" control arm at **K** with a 5/16 X 1/2" shoulder bolt, two washers and a locknut. Place both washers next to the bolt head. Route the brake cable under the handle assembly.



9. Attach the rope guide to the right handle with a 1/4-20 X 2" bolt and locknut. The eye of the guide should be over the outside of the handle.
10. Split the halves of the guide and pass the pull rope into the eye of the guide. Tighten the nut holding the rope guide to the handle while holding the bolt head in the clamp socket (be careful not to overtighten).

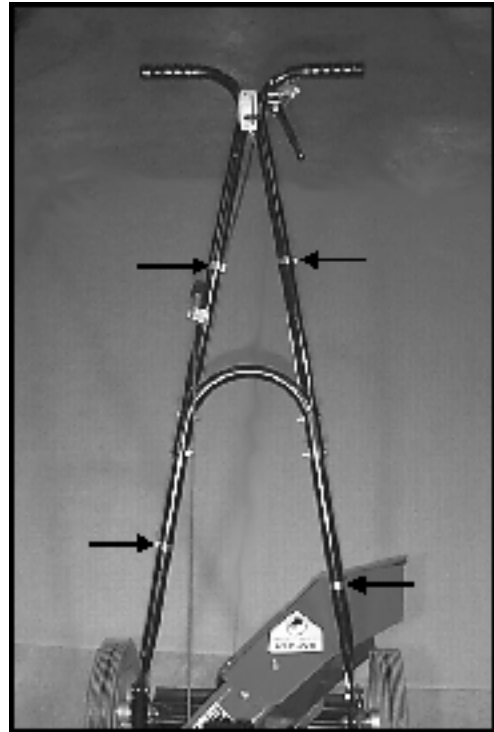




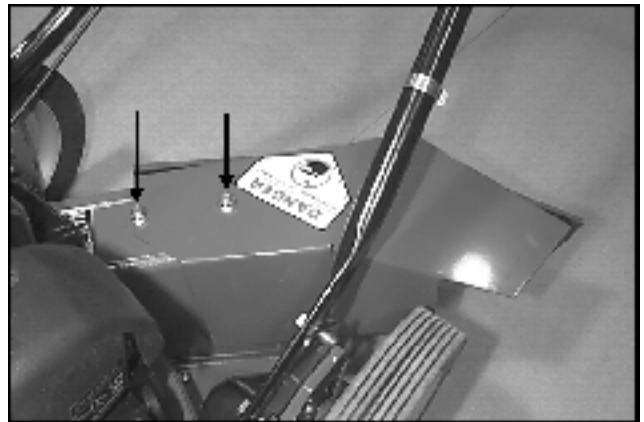
21" PUSH MOWER

ASSEMBLY & SETUP

11. Attach the cables to the handles at locations shown, using two cable clamps for each cable.



12. Attach the discharge chute to the mower housing with two 5/16-24 X 3/4" whizlock bolts and nuts.
13. Remove the protective paper from the throttle control plate.



14. The engine is shipped without oil. Before starting, fill with oil to the full level on the dipstick. See engine manual for proper oil specifications.
15. Fill the fuel tank with clean, fresh, unleaded gasoline.

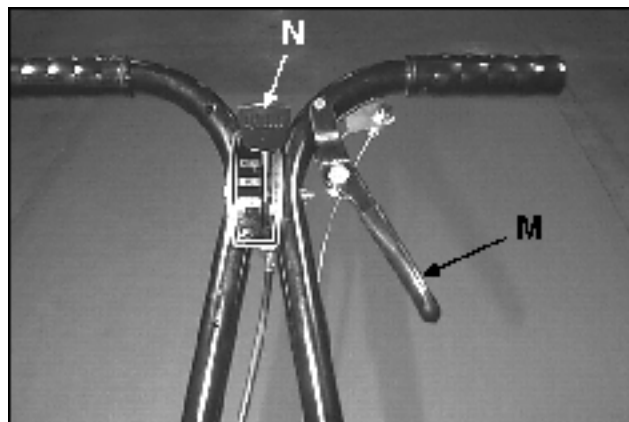
CONTROLS/SPECIFICATIONS

21" PUSH MOWER



HOLD TO RUN LEVER M - Hold to handle bar to operate mower. Release lever to stop engine.

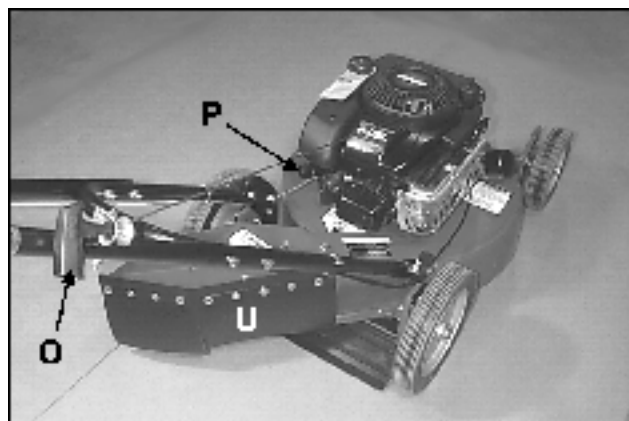
ENGINE THROTTLE N - Push forward to increase engine speed. Pull back to slow engine.



RECOIL STARTER O - Pull and release to start engine.

PRIMER BULB P - Press and release to prime engine for starting.

DISCHARGE CHUTE U - Directs grass discharge away from operator. The discharge chute or grass catcher must be on the machine while operating.



MODEL	922102
Engine	Briggs & Stratton Intek Pro
Horsepower	6.5 hp
Bore & Stroke	2.69" x 2.04" (68.0 mm x 51.8 mm)
Displacement	11.57 cu in (190 cc)
Fuel Tank	1.6 quarts (1.5 l)
Controls	Throttle control on handle; primer bulb on engine; operator present control stops engine within 3 seconds of release
Handles	1" - 16-gauge steel tube with 16-gauge reinforcement
Tires	Welded steel wheels with greaseable ball bearings
Front	8.00 x 1.75 semi-pneumatic
Rear	10.00 x 1.75 semi-pneumatic
Cutting Width	21" (533 mm)
Construction	High-strength cast aluminum magnesium alloy
Cutter Type	Rotary rear discharge
Blade	One-piece, high lift, 1060 annealed and heat-treated steel
Cutting Height Adjustment	.5" to 3.5", in .25" increments (13 - 90 mm in 6 mm increments); axle bolts mount into slots in heavy-duty cutting deck
Shipping Weight	101 lb (45.9 kg)



PREPARATION

- Before starting, check the oil level. If necessary, add oil to the full mark on the dipstick. See the engine manufactures manual for specifications.
- Make sure the spark plug wire is connected to the plug.

WARNING

FUEL TANK: GASOLINE IS HIGHLY FLAMMABLE!

- Fill fuel tank with good quality, clean, regular unleaded gasoline.
- Do not use hi-test fuel
- Do not smoke.
- Do not spill fuel.
- Fill fuel tank outdoors.
- Do not overfill. Fill to 1" below bottom of filler neck to allow room for expansion.

STARTING

- Make sure the spark plug wire is connected to the plug.
- Push the primer bulb firmly three times (not necessary if engine is hot and did not run out of fuel).
- Move to operator's position and squeeze the **HOLD TO RUN** Lever to the handle.
- Move the throttle to the **FAST** position.
- Pull the recoil starter rope rapidly (see engine manufacturer's manual for recommendations).
- If the engine fails to start after several pulls (especially in cold weather), try repriming.
- When engine starts, move throttle to desired setting.
- To stop the machine, release the **HOLD TO RUN** lever.

OPERATING THE MACHINE

- For normal use the throttle should be kept fully open.
- Using the machine at less than full throttle in heavy conditions will cause the engine to labor and result in excessive wear.
- Fit the discharge chute, grass collector or mulching plate before starting the engine.
- If grass is extremely tall, it should be mowed twice—the first cut relatively high and the second cut to the desired height.

CAUTION

PREVENT INJURY OR PROPERTY DAMAGE FROM THROWN OBJECTS OR FROM CONTACT WITH THE BLADE

WARNING

- Keep body parts away from blade.
- Stop engine and let blades stop before removing grass collector or unclogging.
- Keep area clear of people and pets.
- Remove objects blade may strike and throw.
- Stop blades to cross gravel areas.
- Do not operate without discharge chute, mulching plate or entire grass collector in place.

CUTTING HEIGHT

21" PUSH
MOWER

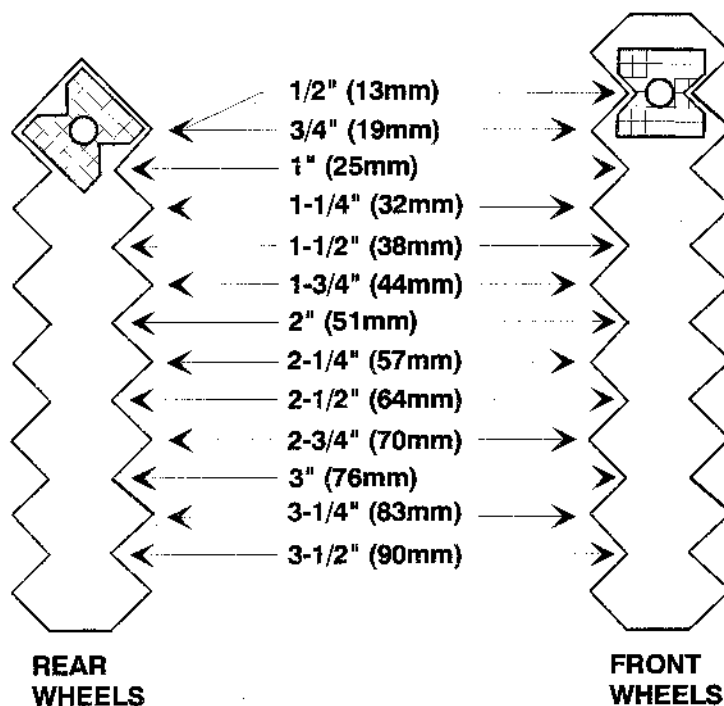


NOTE: Stop engine and remove spark plug wire before adjusting cutting height.

Cutting height is adjustable over a 3" range in 1/4" increments. The adjustment is made individually for each wheel by aligning the wheel's notched adjusting nut along the notched slot in the wheel mounting flange (see illustration for 0.5" cutting height below). The front wheels should be adjusted first, followed by the rear wheels, until all are set to the same position and the mower is level.

1. Front wheels
 - a. Loosen the 1/2" hex nut sufficiently so the wheel can be pulled out approximately 1/4" and the square adjusting nut can clear the notch.
 - b. Move the adjusting nut to the desired position. See below to select the appropriate notch position.
2. Rear wheels
 - a. First raise the rear of the mower and support on blocks.
 - b. Adjust as for the front wheels.
3. Before using the mower, make sure all wheel are set to the same position and all wheel nuts securely tightened.

NOTE: Alignment of the square nut with the notched flange is aided by holding the axle bolt with a box wrench.



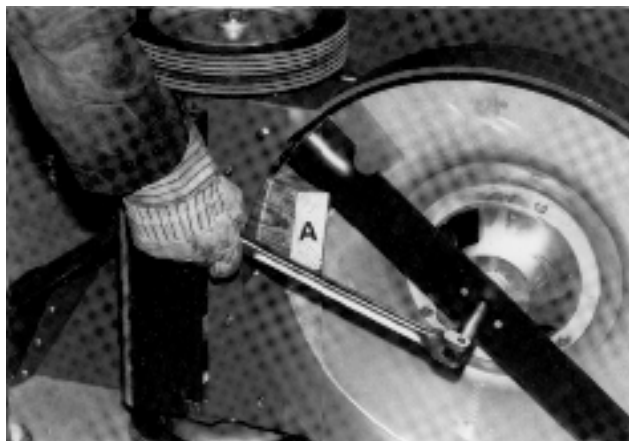
Wheel nut positions for 1/2" (13mm) cutting height. The rear wheel adjustment position is the same for 1/2" (13mm) and 3/4" (19mm) cutting heights. The setting shown above illustrates the 45° rotation of the adjustment nut between adjacent adjustment positions.



BLADE REMOVAL

NOTE: Stop engine and remove spark plug wire before removing blade.

1. Use a box wrench or socket with a long breaker bar to remove the blade bolt.
2. Slip tube over breaker bar or wrench if necessary to gain leverage. To prevent blade from turning, place block of wood **A**, with its grain perpendicular to the blade.
3. Keep hands clear because the blade may rotate when the bolt releases.
4. When changing a blade, wear thickly padded gloves.



BLADE SHARPENING

The blade may be sharpened by filing or grinding, but with either method the blade balance must be maintained. Failure to maintain balance causes excess vibration, wear and shortened life, not only of the blade, but of most other components of the machine.

To balance a blade after sharpening, first balance at the center to determine which blade end is lightest. Place or attach a 1/8 oz weight 5" from the center of the lightest end. This should change the balance so that the lightest end becomes the heaviest end. If it does not, file or grind the heavy end until this test is passed.

NOTES:

- Do not overheat or weaken the blades.
- Do not straighten bent blades. Replace with new Bunton blades.
If lift portion of blade is worn thin replace with a new Bunton blade.
- ALWAYS replace with Bunton blades—do not use another manufacturer's blades as this could be dangerous.
- Replace cracked or bent blades.

LUBRICATION

1. Grease fittings in wheel hubs every 50 hours under normal use (more often under dirty or dusty conditions). Add grease until it comes out thrust washers on both sides of wheels. Wipe excess away.
2. Change engine oil, oil filter and clean air cleaner as specified in engine owner's manual.

CAUTION

Used oil is a hazardous waste product. Dispose of used oil properly. Do not discard with house hold waste. Check with you local authorities service center, or dealer for safe disposal/recycling facilities

3. Oil **HOLD TO RUN** lever pivots with a light oil (SAE 20 or equivalent) every 25 hours.

OPTIONAL GRASS CATCHERS

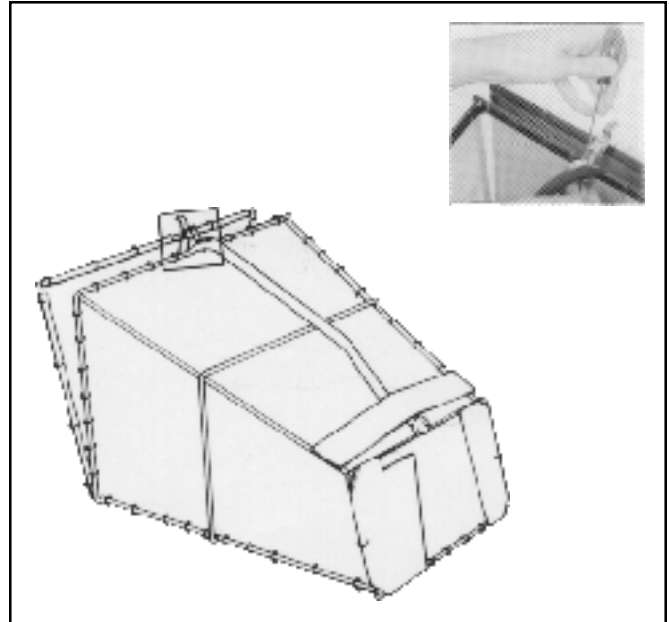
21" PUSH
MOWER



INSTALLATION

68125 Metal catcher

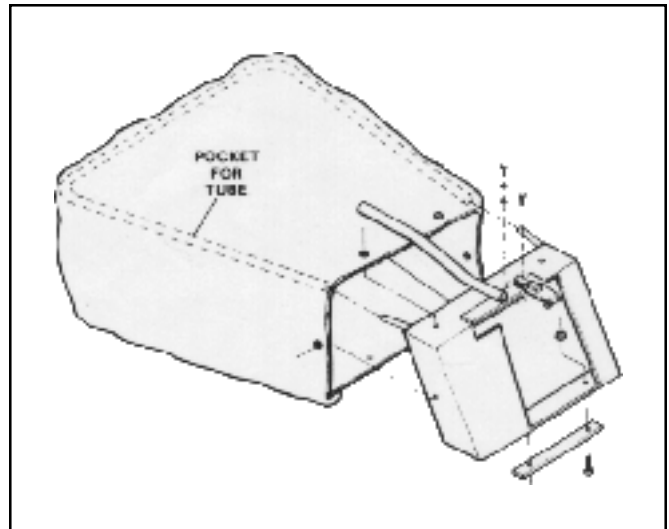
1. Stop engine.
2. Attach latch to handle with two screws and nuts supplied. The nuts should be on the underside of the tube.
3. Bolt the T-bar to the deck with the 5/16-24 bolts supplied. Center T-bar over rear of chute and then position rod perpendicular to chute opening. Tighten securely.



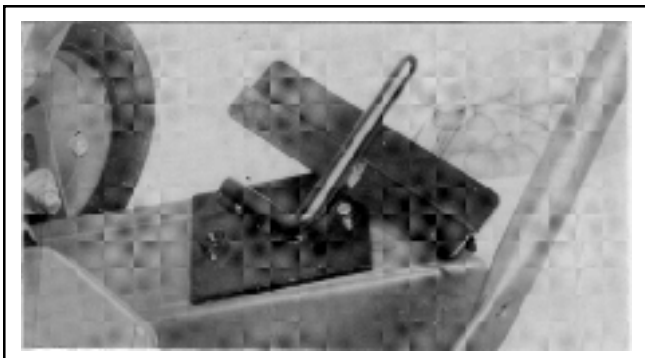
68125 METAL CATCHER

68126 Poly catcher

1. Insert the tube into the bag and into pocket sewn into bag to retain it.
2. Push tube on front frame of grass catcher. Secure catcher to frame with 6 screws, nuts and strap. The nuts should be on the inside.
3. Attach latch to front frame of grass catcher with screws as shown.
4. To close the top of the bag, stretch the cover (with elastic) back over the tube and attach the latch with screws and washers.
5. Bolt the T-bar to the deck with the 5/16-24 bolts supplied. Center T-bar over rear of chute and then position rod perpendicular to chute opening. Tighten securely.



68126 POLY CATCHER



T-BAR INSTALLATION

REMOVAL - To empty grass catcher, always stop the engine first.







21" PUSH MOWER





FASTENER TORQUES

CAUTION

All torque values included in these charts are approximate and are for reference only. Use of these torque values is at your sole risk. Textron Turf Care And Specialty Products is not responsible for any loss, claim, or damage arising from the use of these charts. **Extreme caution should always be used when using any torque value.**

Textron Turf Care And Specialty Products uses Grade 5 Plated bolts as standard, unless otherwise noted. For tightening plated bolts, use the value given for lubricated.

AMERICAN NATIONAL STANDARD FASTENERS											
SIZE	UNITS	 GRADE 5		 GRADE 8		SIZE	UNITS	 GRADE 5		 GRADE 8	
		LUBRICATED	DRY	LUBRICATED	DRY			LUBRICATED	DRY	LUBRICATED	DRY
6-32	in-lbs (Nm)	--	20 (2.3)	--	--	7/16-14	ft-lbs (Nm)	37 (50.1)	50 (67.8)	53 (71.8)	70 (94.9)
8-32	in-lbs (Nm)	--	24 (2.7)	--	30 (3.4)	7/16-20	ft-lbs (Nm)	42 (56.9)	55 (74.6)	59 (80.0)	78 (105.0)
10-24	in-lbs (Nm)	--	35 (4.0)	--	45 (5.1)	1/2-13	ft-lbs (Nm)	57 (77.2)	75 (101.0)	80 (108.0)	107 (145.0)
10-32	in-lbs (Nm)	--	40 (4.5)	--	50 (5.7)	1/2-20	ft-lbs (Nm)	64 (86.7)	85 (115.0)	90 (122.0)	120 (162.0)
12-24	in-lbs (Nm)	--	50 (5.7)	--	65 (7.3)	9/16-12	ft-lbs (Nm)	82 (111.0)	109 (148.0)	115 (156.0)	154 (209.0)
1/4-20	in-lbs (Nm)	75 (8.4)	100 (11.3)	107 (12.1)	143 (16.1)	9/16-18	ft-lbs (Nm)	92 (124.0)	122 (165.0)	129 (174.0)	172 (233.0)
1/4-28	in-lbs (Nm)	85 (9.6)	115 (11.3)	120 (13.5)	163 (18.4)	5/8-11	ft-lbs (Nm)	113 (153.0)	151 (204.0)	159 (215.0)	211 (286.0)
5/16-18	in-lbs (Nm)	157 (17.7)	210 (23.7)	220 (24.8)	305 (34.4)	5/8-18	ft-lbs (Nm)	128 (173.0)	170 (230.0)	180 (244.0)	240 (325.0)
5/16-24	in-lbs (Nm)	173 (19.5)	230 (26.0)	245 (27.6)	325 (36.7)	3/4-10	ft-lbs (Nm)	200 (271.0)	266 (360.0)	282 (382.0)	376 (509.0)
3/8-16	ft-lbs (Nm)	23 (31.1)	31 (42.0)	32 (43.3)	44 (59.6)	3/4-16	ft-lbs (Nm)	233 (302.0)	298 (404.0)	315 (427.0)	420 (569.0)
3/8-24	ft-lbs (Nm)	26 (35.2)	35 (47.4)	37 (50.1)	50 (67.8)	7/8-14	ft-lbs (Nm)	355 (481.0)	473 (641.0)	500 (678.0)	668 (905.0)

METRIC FASTENERS										
SIZE	UNITS	 4.8		 8.8		 10.9		 12.9		Non Critical Fasteners into Aluminum
		LUBRICATED	DRY	LUBRICATED	DRY	LUBRICATED	DRY	LUBRICATED	DRY	
M4	Nm (in-lb)	-	-	-	-	-	-	3.83 (34)	5.11 (45)	2.0 (18)
M5	Nm (in-lb)	1.80 (16)	2.40 (21)	4.63 (41)	6.18 (54)	6.63 (59)	8.84 (78)	7.75 (68)	10.3 (910)	4.0 (35)
M6	Nm (in-lb)	3.05 (27)	4.07 (36)	7.87 (69)	10.5 (93)	11.3 (102)	15.0 (133)	13.2 (117)	17.6 (156)	6.8 (60)
M8	Nm (in-lb)	7.41 (65)	9.98 (88)	19.1 (69)	25.5 (226)	27.3 (241)	36.5 (323)	32.0 (283)	42.6 (377)	17.0 (150)
M10	Nm (in-lb)	14.7 (11)	19.6 (14)	37.8 (29)	50.5 (37)	54.1 (40)	72.2 (53)	63.3 (46)	84.4 (62)	33.9 (25)
M12	Nm (ft-lb)	25.6 (19)	34.1 (25)	66.0 (48)	88.0 (65)	94.5 (70)	125.0 (92)	110.0 (81)	147.0 (108)	61.0 (45)
M14	Nm (ft-lb)	40.8 (30)	54.3 (40)	105.0 (77)	140.0 (103)	150.0 (110)	200.0 (147)	175.0 (129)	234.0 (172)	94.9 (70)

BUNTON WARRANTY

21" PUSH
MOWER



Textron Turf Care And Specialty Products warrants for one year each new Bunton product and accessories, according to the following terms.

This warranty extends to the original retail purchaser only and commences on the date of original retail purchase. Accordingly this warranty is not transferable to any subsequent purchasers.

Any part of the Bunton product or accessory manufactured by Textron Turf Care And Specialty Products and found in the reasonable judgement of Textron Turf Care And Specialty Products to be defective in material or workmanship will be repaired or replaced by an authorized Bunton dealer without charge for parts and labor.

The Bunton product or accessory including any defective part must be returned to an authorized Bunton dealer within the warranty period. The expense of returning the Bunton product or accessory to an authorized dealer for warranty service and the expense of returning it back to the owner after repair or replacement will be paid for by the owner. Textron Turf Care And Specialty Products' responsibility in respect to claims is limited to making the required repairs or replacements, and no claim of breach of warranty shall be cause for cancellation or rescission of the contract of sale of any Bunton product or accessory.

Proof of purchase will be required by the authorized Bunton dealer to substantiate any warranty claim. All warranty work must be performed by an authorized Bunton dealer.

Textron Turf Care And Specialty Products makes no warranty with respect to engines, tires, batteries, regulators, starter-generators, or other parts not of its manufacture as such parts are usually warranted separately by their respective manufacturers.

This warranty does not include service items or parts subject to normal wear.

This warranty does not cover any Bunton product or accessory that has been subject to misuse, neglect, negligence, or accident, or that has been operated or maintained in any way contrary to the operating or maintenance instructions as specified in the Bunton Operator's Manual. The warranty does not apply to any Bunton product or accessory that has been altered or modified so as to adversely affect the product's operation, performance or durability or that has been altered or modified so as to change its intended use. In addition, **the warranty does not extend to repairs made necessary by normal wear**, or by the use of parts or accessories which in the reasonable judgement of Textron Turf Care And Specialty Products are either incompatible with the Bunton product or adversely affect its operation, performance or durability.

Textron Turf Care And Specialty Products reserves the right to change or improve the design of any Bunton product or accessory without assuming any obligation to modify any product previously manufactured.

THERE ARE NO OTHER WARRANTIES, EXPRESS OR IMPLIED, INCLUDING MERCHANTABILITY AND FITNESS FOR A PARTICULAR PURPOSE. ALL WARRANTIES OTHER THAN THIS EXPRESS WARRANTY ARE SPECIFICALLY DISCLAIMED.

TEXTRON TURF CARE AND SPECIALTY PRODUCTS' OBLIGATION UNDER THIS WARRANTY IS STRICTLY AND EXCLUSIVELY LIMITED TO THE REPAIR OR REPLACEMENT OF DEFECTIVE PARTS, AND TEXTRON TURF CARE AND SPECIALTY PRODUCTS DOES NOT ASSUME OR AUTHORIZE ANYONE TO ASSUME FOR IT ANY OTHER OBLIGATION.

TEXTRON TURF CARE AND SPECIALTY PRODUCTS ASSUMES NO RESPONSIBILITY FOR INCIDENTAL, CONSEQUENTIAL OR OTHER DAMAGES INCLUDING, BUT NOT LIMITED TO, EXPENSE FOR GASOLINE, EXPENSE OF RETURNING THE BUNTON PRODUCT TO AN AUTHORIZED DEALER AND EXPENSE OF RETURNING IT BACK TO THE OWNER. MECHANIC'S TRAVEL TIME, TELEPHONE OR TELEGRAM CHARGES, TRAILERING OR TOWING CHARGES, RENTAL OF A LIKE PRODUCT WHILE WARRANTY SERVICE IS BEING PERFORMED, TRAVEL, LODGING, LOSS OR DAMAGE TO PERSONAL PROPERTY, LOSS OF REVENUE, LOSS OF USE OF PRODUCT, LOSS OF TIME OR INCONVENIENCE.

This warranty gives you specific legal rights. You may also have other rights, which vary from state to state.

Textron Turf Care And Specialty Products * P.O. Box 82409 * Lincoln, Nebraska 68501-2409



To make a claim under warranty, contact an authorized Bunton dealer immediately upon realizing a problem exists. We recommend having the warranty work performed by the dealer who originally sold you the unit; however, warranty work can be sought from any authorized Bunton dealer. Remember, your Bunton unit must be delivered to an authorized Bunton dealer within the warranty period, and all warranty work must be performed only by an authorized Bunton dealer. Proof of purchase will be required by the dealer to substantiate any warranty claim.

EXAMPLES OF ITEMS NOT COVERED UNDER WARRANTY

Provisions of the warranty will not apply to:

- Normal service requirements arising during the warranty period, such as carburetor or ignition adjustment and cleaning or wear of a drive belt, brake, clutch linings or starter brushes.
- Normal service work over and above the repair and replacement of defective parts.
- Units subject to misuse, neglect, negligence, or accident.
- Units that have been altered or modified so as to adversely affect their operation, performance or durability or to change their intended use.
- Repairs made necessary by the use of parts or accessories which are either incompatible with the unit or adversely affects the operation, performance or durability.
- Units not operated or maintained in accordance with the instructions in the Bunton Operator's Manual.
- Normal cleaning, adjusting or replacing of such items as filter, spark plugs, ignition points, light bulbs, fuses or starter drive.
- Periodic checking or adding of lubricants to the unit or service checkup, tune-up or diagnosis.

Expense of delivering the unit to the dealer and expense of returning the unit back to the owner, mechanic's travel time, trailering or towing charges, or rental of a like unit during the time warranty repairs are being performed.

Engines, tires, batteries, regulators and starter-generators manufactured by other than Bunton are not covered under this warranty as such parts are usually warranted by their respective manufacturers.

This warranty applies only to the original retail purchaser. Second-owner or subsequently owned units are not covered under warranty.

OWNER'S OBLIGATION AND RESPONSIBILITY

Normal maintenance service and replacement of service items are the responsibility of the owner and as such are not considered defects in material or workmanship within the terms of the warranty. Individual operating habits and usage contribute to the need for maintenance service.

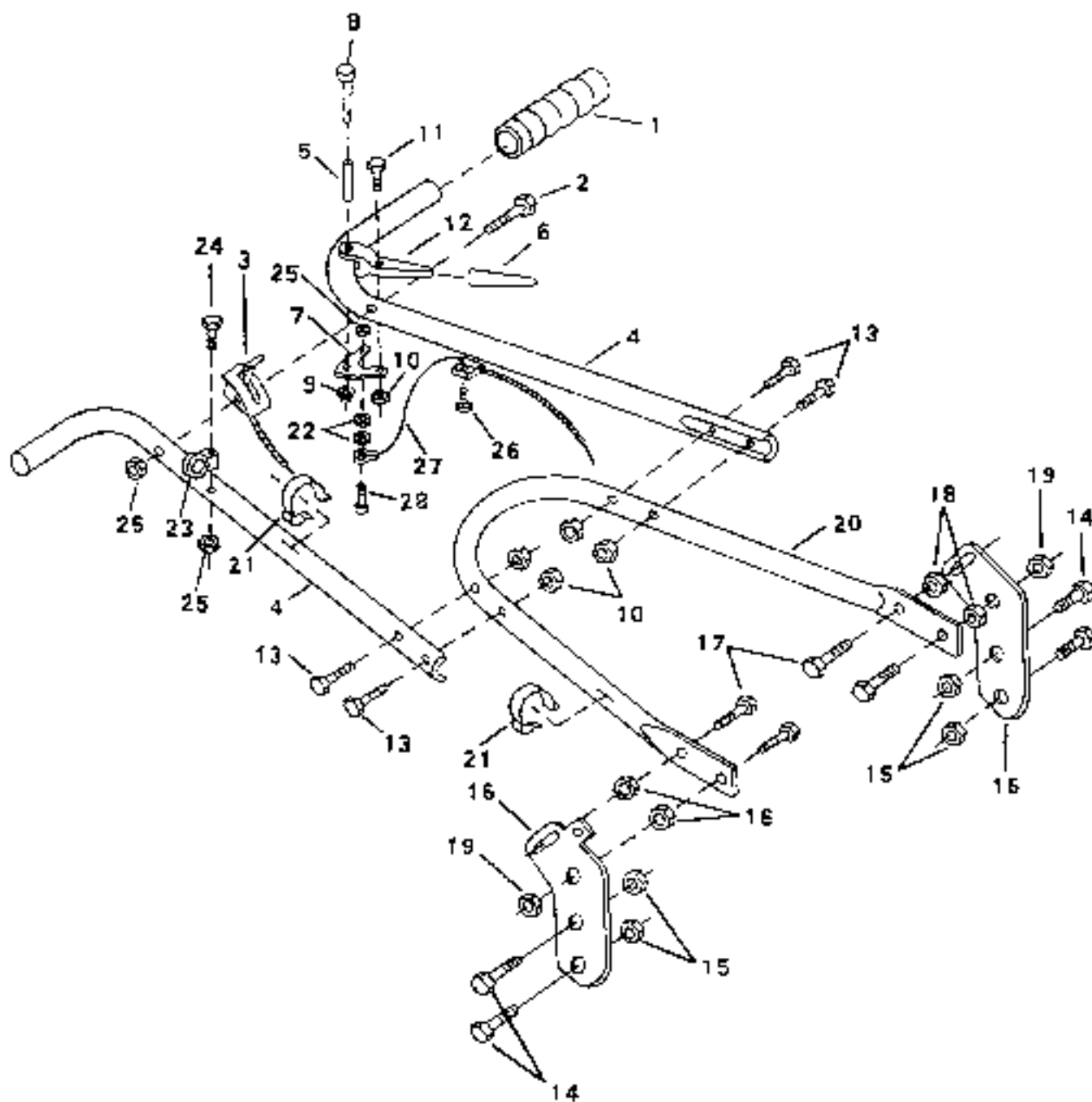
See your Bunton dealer for proper maintenance and care of your unit. Proper maintenance and care will assist in keeping your overall operating cost at a minimum.

To validate a warranty claim, it is the owner's responsibility to maintain all components in proper adjustment and service the unit as specified in the Bunton Operator's Manual. It is the owner's responsibility to provide proper lubrication for all components and provide correct recommended fuel for the unit. It is the owner's responsibility to maintain the battery liquid level and charge as specified, as well as maintaining the correct pressure in the unit's tires.

HANDLE ASSEMBLY

FIGURE 1

21" PUSH
MOWER





21" PUSH MOWER

2721210-01

HANDLE ASSEMBLY

FIGURE 1

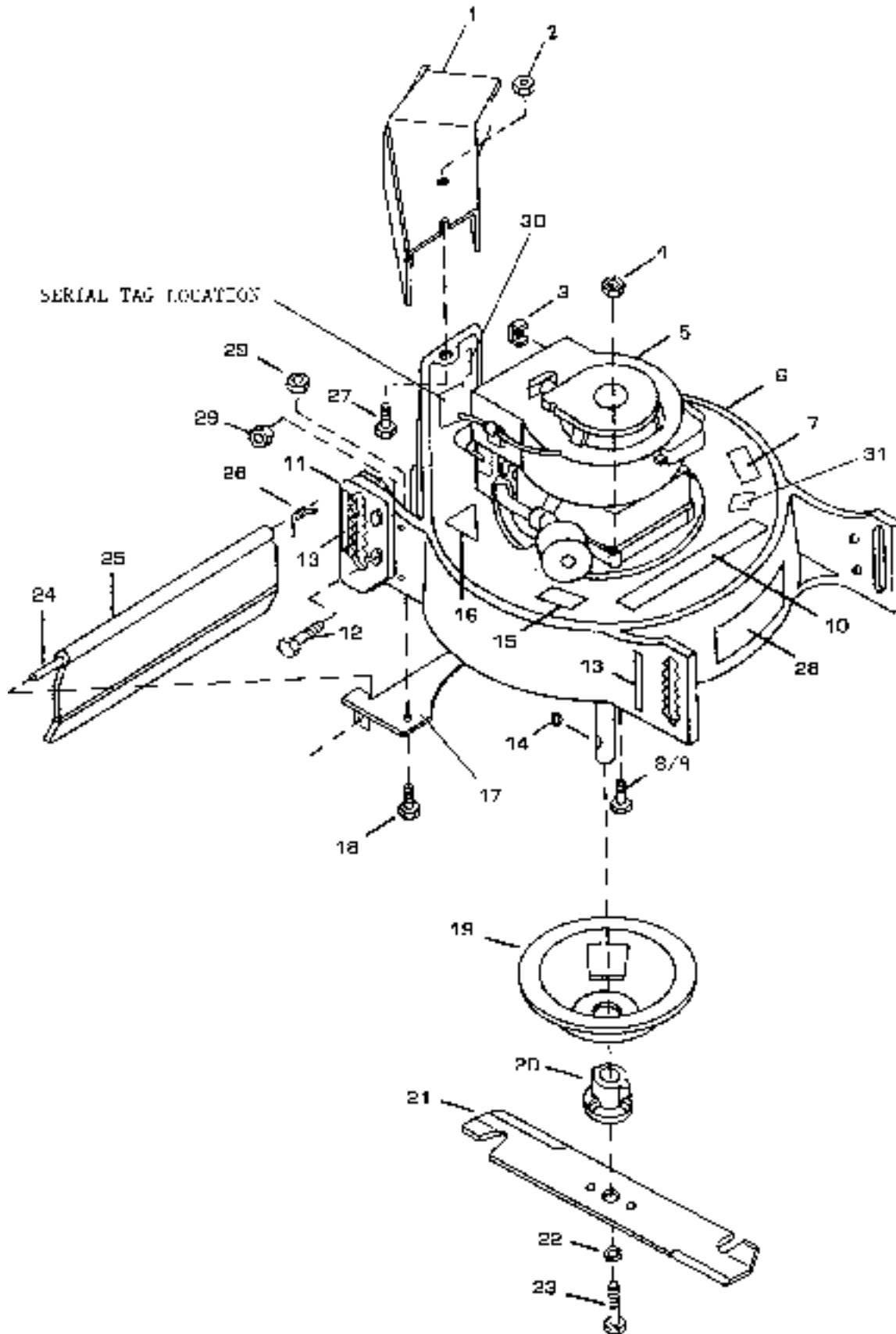
ITEM	PART NO.	QTY.	DESCRIPTION	SERIAL NUMBER/NOTES
1	78011-1A	2	GRIP-HANDLE BLACK	
2	64123-113	1	BOLT-HEX 1/4-20 X 2-1/4	
3	2721189-01	1	CABLE-THROTTLE 76.5	
4	2720657.7	2	HANDLE-UPPER	
5	64061-18	1	ROLL PIN-5/16 X 1	
6	75090	1	GRIP-HOLD TO RUN	
7	72156	1	LEVER-OVER CENTER	
8	64188-20	1	CLEVIS PIN 0.177	
9	64226-01	1	RETAINER GROOVELESS	
10	64151-1	5	NUT-LOCK NUT 5/16-18	
11	64123-68	1	BOLT-HEX 5/16-18 X 1	
12	61040A.7	1	LEVER-TRACTION CONTROL	
13	64123-69	4	BOLT-HEX 5/16-18 X 1-1/2	
14	64123-47	4	BOLT-HEX 5/16-18 1-1/4	
15	64151-1	4	5/16-18 HEX LOCK NUT	
16	72021-1B.7	2	HANDLE-BRKT-CAST DECK	
17	64123-02	4	BOLT-HEX 3/8-24 X 24	
18	64001-2	4	NUT-HEX 3/8-24	
19	64151-19	2	NUT-LOCK 3/8-24	
20	72116C.7	1	LOWER-HANDLE	
21	78007N	4	THROTTLE CABLE CLIP	
22	64163-02	2	WASHER 21/64 X 19/32 X 11GA	
23	B396494	1	GUIDE-ROPE 2 HALVES	
24	64123-60	1	BOLT-HEX 1/4-20 X 2	
25	64151-17	3	NUT-HEX LOCK CL 1/4-20	
26	64152-27	1	1/4-20 X 5/8 LG SP SCREW	
27	78135-02	1	CABLE-BRAKE	
28	64166-6	1	BOLT-SHOULDER 5/16 X 1/2 X 1/4-20	

SHIELDS, BLADE & DECALS

21" PUSH
MOWER



FIGURE 2





21" PUSH MOWER

2721211-02

SHIELDS, BLADE & DECALS

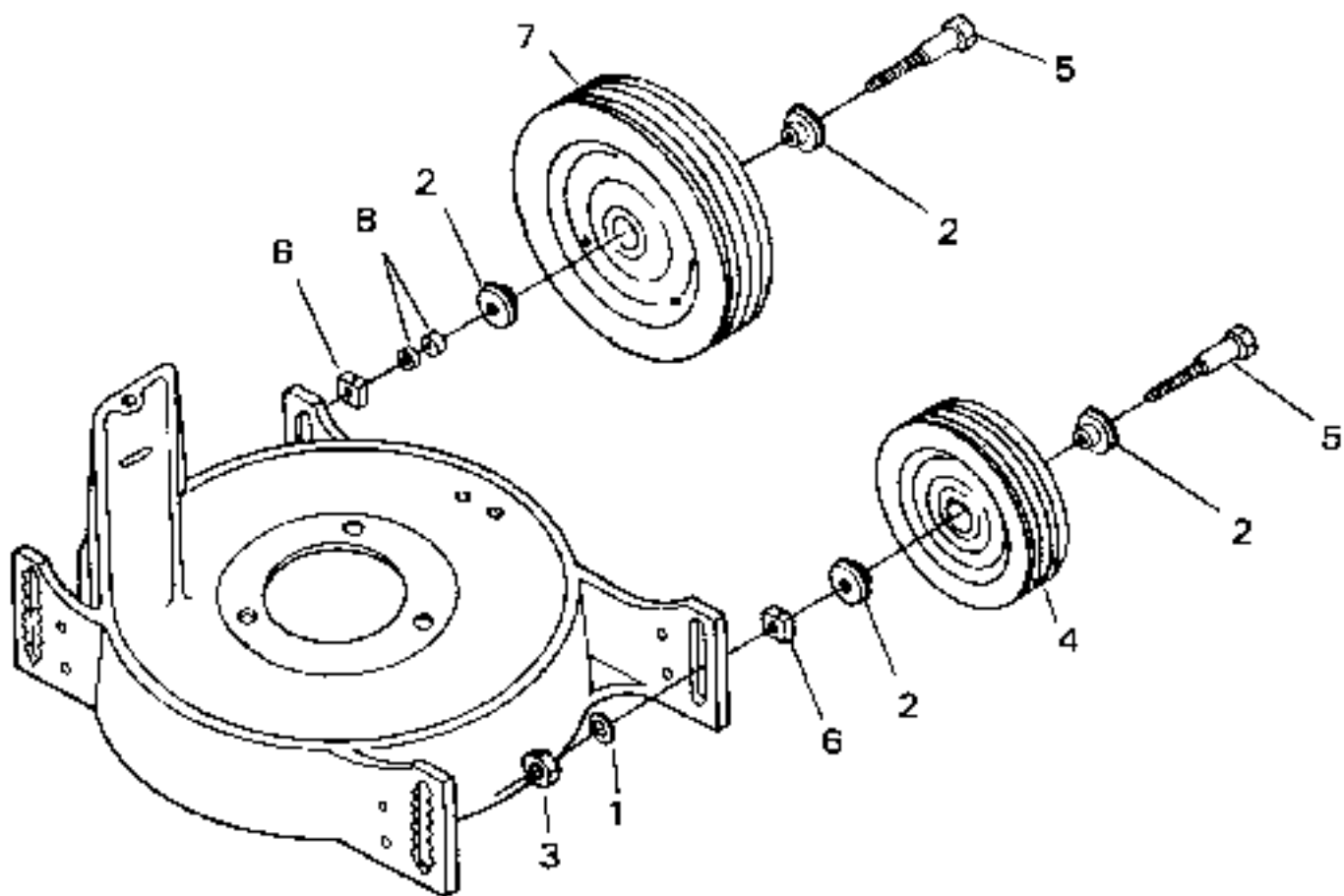
FIGURE 2

ITEM	PART NO.	QTY.	DESCRIPTION	SERIAL NUMBER/NOTES
1	2720006	1	CHUTE ASSEMBLY	
2	64141-1	2	NUT-WLF 5/16-24	
3	22372	1	B&S CABLE CLAMP	
4	64151-1	3	5/16-18 HEX LOCK NUT	
5	2721190	1	ENGINE-BRIGGS & STRATTON 6.5 INTEK	
6	2720013	1	S-BUNTON DECK 21" W/ LABELS	
7	00347	1	DECAL-CAUTION	
8	64123-56	2	BLT-HEX 5/16-18X2	
9	64123-55	1	BLT-HEX 5/16-18X3	
10	2000789	1	LABEL-BUNTON TEXTRON	
11	72171.7	2	ADJUSTER HEIGHT	
12	64123-80	4	BLT-HEX 1/4-20X1-1/4	
13	00268	4	LAB-HEIGHT ADJUSTING	
14	64164-07	1	#61 WOODRUFF KEY	
15	00346		DECAL-CAUTION	
16	75075A	1	DECAL-CPSC DANGER	
17	76174.7	1	WLDMT-BAFFLE PLATE	
18	64123-89	4	BLT-HEX 1/4-20X3/4	
19	71010	1	CRANKSHAFT PROTECTOR	
20	71009	1	BLADE ADAPTER 25MM	
21	72039B	1	21" CUTTER BLADE PAINT	
22	64006-03	1	LOCKWSHR-HELICAL 3/8	
23	64123-103	1	BLT-HEX 3/8-24X1 1/2 GR8	
24	73035A	1	21" PIVOT PIN-PLATE	
25	78048-2B	1	SHIELD-REAR 16" LONG	
26	75073A	1	SPRING	
27	64139-01	2	BLT-WLF 5/16-24X3/4	
28	2720003	1	LABEL-COMMERCIAL	
29	64229-01	8	LOCK NUT-NYLON 1/4-20	
30	75091	1	DECAL,CPSC SAFETY REQ	
31	2721226	1	LABEL-ANSI B71.4 1999	

WHEEL ASSEMBLY

FIGURE 3

21" PUSH
MOWER





21" PUSH MOWER

2721210-03

WHEEL ASSEMBLY

FIGURE 3

ITEM	PART NO.	QTY.	DESCRIPTION	SERIAL NUMBER/NOTES
1	64163-19	4	33/64 X 12 GA WSHR	
2	78113	8	BEARING-WHEEL	
3	64229-05	4	NUT-NYLOCK 1/2-13	
4	78109	2	WHEEL&TIRE 8X1.75	
5	64123-147	4	BLT-1/2-13X4 2-1/4 THD	
6	75002A	4	NUT-WHEEL HGT ADJUST	
7	78108	2	WHEEL&TIRE 10X1.75	
8	73022A	4	PIVOT-BUSHING PLATE	

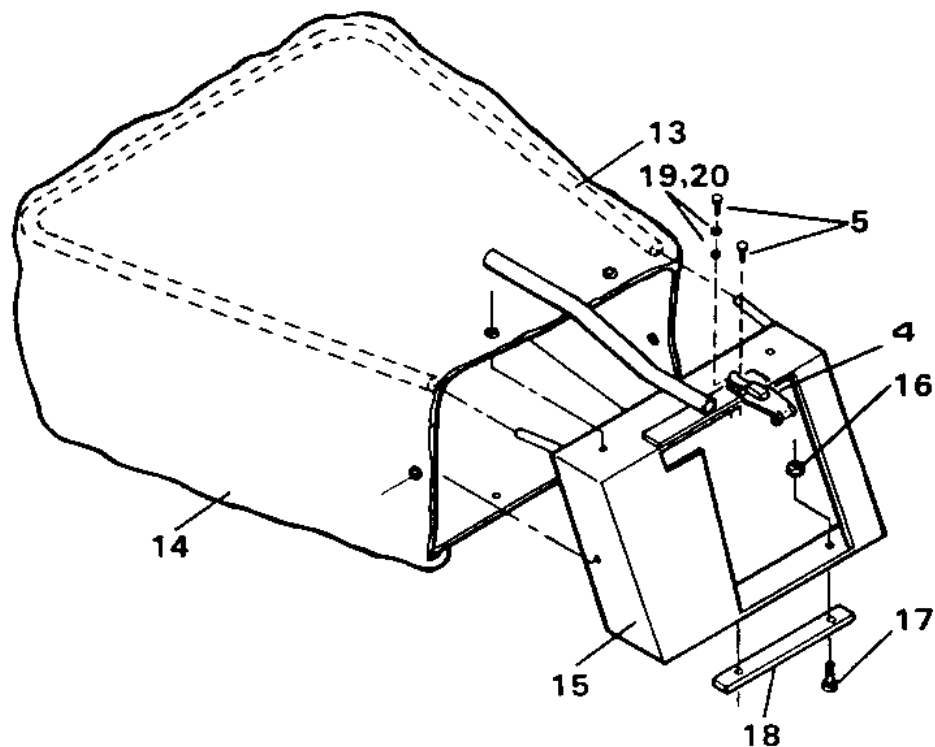
OPTIONAL GRASS CATCHERS

21" PUSH
MOWER

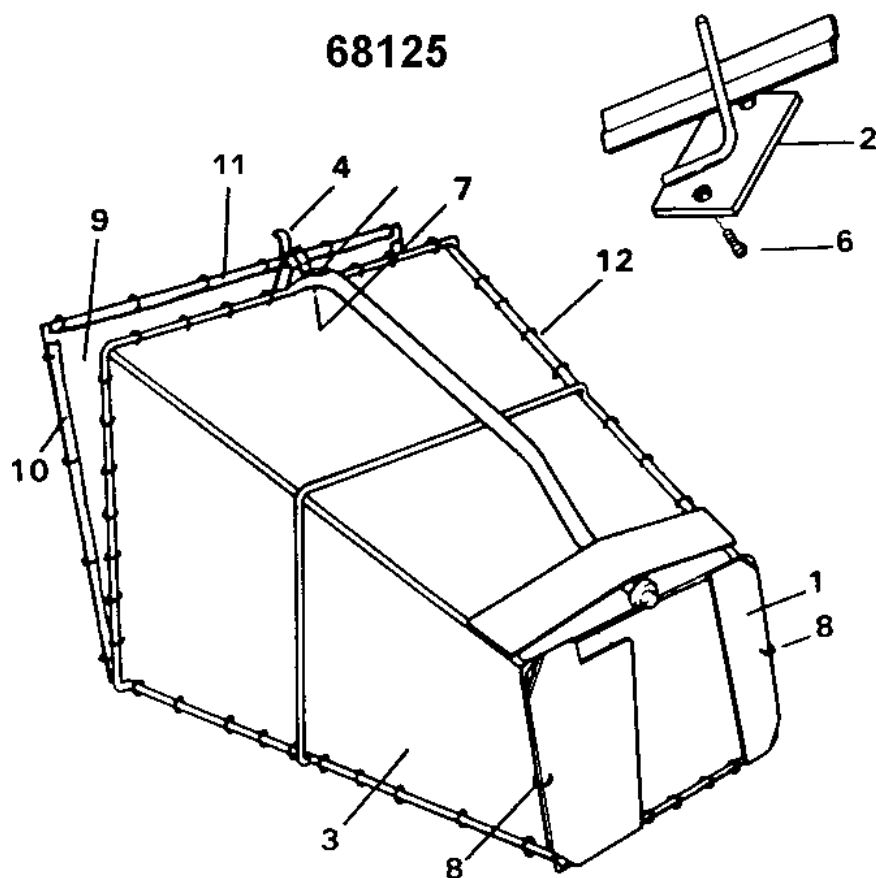


FIGURE 4

68126



68125





2721210-04

FIGURE 4

NOTE:
BOTH OPTIONAL GRASS CATCHERS MAY BE ORDERED COMPLETE.
68125 FNL PKG GC PUSH-METAL
68126 FNL PKG GC PUSH-POLY

CROSS REFERENCE

21" PUSH MOWER



PART NO.	DESCRIPTION	FIG/ITEM	PART NO.	DESCRIPTION	FIG/ITEM
00268	LABEL HEIGHT ADJUSTING	2 /13	68125	ATT-GC METAL CMMRCL 21	4 /21
00346	DECAL-CAUTION, READ	2 /15	68126	ATT-GC POLY CMMRCL 21	4 /22
00347	DECAL-CAUTION	2 /7	71009	ADAPTER, BLADE 25 MM	2 /20
22372	B&S CABLE CLAMP	2 /3	71010	C/S PROTECTOR 25 MM	2 /19
2720003	LABEL-COMMERCIAL 21	2/28	72021-1B.7	BRKT-CAST DECK HANDLE	1 /16
2720006	CHUTE ASM	2 /1	72039B	21 CUTTER BLADE	2 /21
2720013	S-BUNTON DECK 21" W/LAB	2 /6	72091A	G/C DOOR BAFFLE	4 /9
2720016	BAG-REINFORCED GRASS	4 /14	72116C.7	HANDLE-LOWER	1 /20
2000789	LABEL-BUNTON/TEXTRON	2 /10	72119A.7	STRIP-REINFORCING	4 /18
2720657.7	HANDLE-UPPER	1 /4	72156	LEVER OVER CENTER	1 /7
2721189-01	CABLE-THROTTLE 76.5	1 /3	72171.7	ADJUSTER-HEIGHT	2 /11
2721190	ENGINE-B&S 6.5 INTEK	2 /5	73022A	PIVOT BUSHING-PLATE	3 /8
2721226	LABEL-ANSI B71.4 1999	2 /31	73033C1.7	TUBE-TOP SUPPORT	4 /13
61040A.7	LEVER, TRACTION CONTROL	1 /12	73035A	21 PIVOT PIN-PLATE	2 /24
64001-2	NUT-HEX JAM, 3/8-24	1 /18	75002A	NUT, WHEEL HGT. ADJUST.	3 /6
64006-03	LOCKWSHR-HELICAL 3/8	2 /22	75047N	HOG RING	4 /8
64025-15	NUT-HEX #10-24 KEPS	4 /16	75065-1N	VINYL EXTRUSION 13.5	4 /10
64025-29	NUT-HEX #8-32 KEPS	4 /7	75065-2N	VINYL EXTRUSION 18	4 /11
64061-18	ROLL PIN-5/16X1	1 /5	75067N	HOG RINGS W/SHARP ENDS	4 /12
64123-02	BLT-HEX 3/8-24X1	1 /17	75073A	SPRING	2 /26
64123-80	BLT-HEX 1/4-20X1-1/4	2 /12	75075A	LABEL, CPSC DANGER	2 /16
64123-103	BLT-HEX 3/8-24X1-1/2G8	2 /23	75090	GRIP, HOLD TO RUN	1 /6
64123-113	BLT-HEX 1/4-20X2-1/4	1 /2	75091	DECAL, CPSC SAFETY REQ	2 /30
64123-147	BLT-1/2-13X4, 2-1/4 THD	3 /5	76036A.7	ASSY-G/C FRAME	4 /1
64123-47	BLT-HEX 5/16-18X1-1/4	1 /14	76038C.7	BAR-G/C T	4 /2
64123-55	BLT-HEX 5/16-18X3	2 /9	76077C.7	WELDMENT FRAME G.C.	4 /15
64123-56	BLT-HEX 5/16-18X2	2 /8	76120	LINER, GRASS CATCHER	4 /3
64123-60	BLT-HEX 1/4-20X2	1 /24	76174.7	WLDMT-BAFFLE & PLATE	2 /17
64123-68	BLT-HEX 5/16-18X1	1 /11	78007N	THROTTLE CABLE CLIP	1 /21
64123-69	BLT-HEX 5/16-18X1-1/2	1 /13	78009N	DOOR LATCH	4 /4
64123-89	BLT-HEX 1/4-20X3/4	2 /18	78011-1A	GRIP-PLAIN 1 IN	1 /1
64139-01	BLT-WLF 5/16-24X3/4	2 /27	78048-2B	SHIELD, REAR (16 LG)	2 /25
64139-01	BLT-WLF 5/16-24X3/4	4 /6	78108	10X1.75 WHEEL & TIRE	3 /7
64141-1	NUT-WLF 5/16-24	2 /2	78109	8X1.75 WHEEL & TIRE	3 /4
64151-1	5/16-18 HEX LOCK NUT	1 /10	78113	S BEARING WHEEL	3 /2
64151-1	5/16-18 HEX LOCK NUT	2 /4	78135-02	CABLE-BRAKE 68	1 /27
64151-1	5/16-18 HEX LOCK NUT	1 /15	B396494	GUIDE, ROPE-2 HALVES	1 /23
64151-17	NUT, HEX LOCK CL 1/4-20	1 /25			
64151-19	3/8-24 HEX C. LOCK NUT	1 /19			
64152-06	10-24X1/2 MACH SCREW	4 /17			
64152-20	8-32X1/2 MACH SCREW	4 /5			
64152-27	1/4-20X5/8 LG SP SCREW	1 /26			
64163-02	WSHR-.321/.328X.593/.608	1 /22			
64163-02	WSHR-.321/.328X.593/.608	4 /19			
64163-03	WSHR-.256ID X .62OD X 18GA.	4 /			
20 64163-19	33/64X1-1/4X12GA WASHR	3 /1			
64164-07	#61 WOODRUFF KEY	2 /14			
64166-6	5/16X1/2 1/4-20 SHLD	1 /28			
64188-20	PIN, CLEVIS .177 WO HOLE	1 /8			
64226-01	RETAINER, GRVLS .177D	1 /9			
64229-01	LOCK NUT-NYLON 1/4-20	2 /29			
64229-05	LOCK NUT-NYLON 1/2-13	3 /3			

**CALIFORNIA
Proposition 65 Warning**

Diesel engine exhaust and some of its constituents are known to the State of California to cause cancer, birth defects and other reproductive harm.

 **WARNING**

The engine exhaust from this product contains chemicals known to the State of California to cause cancer, birth defects or other reproductive harm.

**Californie Proposition 65
Avertissement**

Les échappements des moteurs diesel et certains de leurs composés sont reconnus par l'Etat de Californie pour être cancérigènes, provoquer des défauts congénitaux et d'autres dangers en matière de reproduction.

 **AVERTISSEMENT**

L'émission du moteur de ce matériel contient des produits chimiques que l'Etat de Californie considère être cancérigènes, provoquer des défauts congénitaux et d'autres dangers en matière de reproduction.

**California Advertencia
de la Proposicion 65**

El estado de California hace saber que los gases de escape de los motores diesel y algunos de sus componentes producen cáncer, defectos de nacimiento y otros daños en el proceso de reproducción humana.

 **ADVERTENCIA**

El estado de California hace saber que los gases de escape de este producto contienen productos químicos que producen cáncer, defectos de nacimiento y otros daños en el proceso de reproducción humana.