



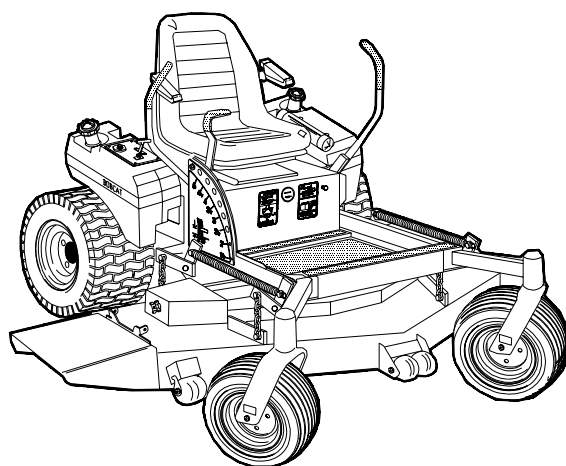
# **BOB-CAT®**

## **SETUP, PARTS & MAINTENANCE MANUAL 218 ESTATE SERIES**

---

### **Models:**

**942211 218ES 18HP B&S W/52 SIDE DISCHARGE**



*WARNING: If incorrectly used this machine can cause severe injury. Those who use and maintain this machine should be trained in its proper use, warned of its dangers and should read the entire manual before attempting to set up, operate, adjust or service the machine.*

**Operation & Safety Manual: 2722096**

**BOB-CAT**

**TEXTRON**  
GOLF, TURF & SPECIALTY PRODUCTS

**2722097 REV04**

**CALIFORNIA**  
**Proposition 65 Warning**

Diesel engine exhaust and some of its constituents are known to the State of California to cause cancer, birth defects and other reproductive harm.



**WARNING**

The engine exhaust from this product contains chemicals known to the State of California to cause cancer, birth defects or other reproductive harm.

**Californie Proposition 65**  
**Avertissement**

Les échappements des moteurs diesel et certains de leurs composés sont reconnus par l'Etat de Californie pour être cancérigènes, provoquer des défauts congénitaux et d'autres dangers en matière de reproduction.



**AVERTISSEMENT**

L'émission du moteur de ce matériel contient des produits chimiques que l'Etat de Californie considère être cancérigènes, provoquer des défauts congénitaux et d'autres dangers en matière de reproduction.

**California Advertencia**  
**de la Proposicion 65**

El estado de California hace saber que los gases de escape de los motores diesel y algunos de sus componentes producen cáncer, defectos de nacimiento y otros daños en el proceso de reproducción humana.



**ADVERTENCIA**

El estado de California hace saber que los gases de escape de este producto contienen productos químicos que producen cáncer, defectos de nacimiento y otros daños en el proceso de reproducción humana.



## IMPORTANT MESSAGE

Thank you for purchasing this Bob-Cat product. You have purchased a world class mowing product, one of the best designed and built anywhere.

This machine comes with an Operation and Safety Manual and a separate Setup, Parts and Maintenance Manual. The useful life and good service you receive from this machine depends to a large extent on how well you read and understand these manuals. Treat your machine properly, lubricate and adjust it as instructed, and it will give you many years of reliable service.

Your safe use of this Bob-Cat product is one of our prime design objectives. Many safety features are built in, but we also rely on your good sense and care to achieve accident-free operation. For best protection, study the manuals thoroughly. Learn the proper operation of all controls. Observe all safety precautions. Follow all instructions and warnings completely. Do not remove or defeat any safety features. Make sure those who operate this machine are as well informed and careful in its use as you are.

See a Bob-Cat dealer for any service or parts needed. Bob-Cat service ensures that you continue to receive the best results possible from Bob-Cat's products. You can trust Bob-Cat replacement parts because they are manufactured with the same high precision and quality as the original parts.

Bob-Cat designs and builds its equipment to serve many years in a safe and productive manner. For longest life, use this machine only as directed in the manuals, keep it in good repair and follow safety warnings and instructions. You'll always be glad you did.

**Textron Golf, Turf & Specialty Products**  
**One Bob Cat Lane**  
**Johnson Creek, WI 53038-0469**

TABLE OF CONTENTS	FIGURES	PAGE
SAFETY .....		2
ASSEMBLY AND SETUP .....		3, 4
MAINTENANCE CHART .....		5
MAINTENANCE RECORD .....		6
MAINTENANCE .....		7-12
ADJUSTMENTS .....		13-15
BELT REPLACEMENT .....		16, 17
SPECIFICATIONS .....		18-20
PARTS SECTION .....		21
UPPER ENGINE DECK ASSY .....	FIGURE 1 .....	22, 23
LOWER ENGINE DECK ASSY/CLUTCH .....	FIGURE 2 .....	24, 25
CRADLE ASSEMBLY .....	FIGURE 3 .....	26, 27
DECALS .....	FIGURE 4 .....	28, 29
BELTS .....	FIGURE 5 .....	30, 31
BRAKES/REAR WHEEL .....	FIGURE 6 .....	32, 33
HYDRAULICS .....	FIGURE 7 .....	34, 35
HYDROGEAR PUMP .....	FIGURE 8 .....	36, 37
DECALS-CUTTERDECKS .....	FIGURE 9 .....	38, 39
WIRING HARNESS .....	FIGURE 10 .....	40, 41
FUEL TANKS/CONTROL PANEL .....	FIGURE 11 .....	42, 43
OIL COOLER/BUMPER .....	FIGURE 12 .....	44, 45
SEAT ASSEMBLY & ROPS .....	FIGURE 13 .....	46, 47
STEERING/DECK LIFT .....	FIGURE 14 .....	48, 49
CRADLE & CASTER ASSEMBLY .....	FIGURE 15 .....	50, 51
52" SIDE DISCHARGE .....	FIGURE 16 .....	52, 53

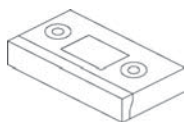


### NOTICE !!!

Unauthorized modifications may present **extreme** safety hazards to operators and bystanders and could also result in product damage.

Textron Golf, Turf & Specialty Products strongly warns against, rejects and disclaims any modifications, add-on accessories or product alterations that are not designed, developed, tested and approved by Textron Golf, Turf & Specialty Products Engineering Department. Any Textron Golf, Turf & Specialty Products product that is altered, modified or changed in any manner not specifically authorized after original manufacture—including the addition of “after-market” accessories or component parts not specifically approved by Textron Golf, Turf & Specialty Products—will result in the Textron Golf, Turf & Specialty Products Warranty being voided.

Any and all liability for personal injury and/or property damage caused by any unauthorized modifications, add-on accessories or products not approved by Textron Golf, Turf & Specialty Products will be considered the responsibility of the individual(s) or company designing and/or making such changes. Textron Golf, Turf & Specialty Products will vigorously pursue full indemnification and costs from any party responsible for such unauthorized post-manufacture modifications and/or accessories should personal injury and/or property damage result.



### OPERATION TRAINING VIDEO:

Part Number	Description
2810594	VIDEO-BOBCAT 100/200



This symbol means:  
**ATTENTION!**  
**BECOME ALERT!**

Your safety and the safety of others is involved.

### Signal word definitions:

The signal words below are used to identify levels of hazard seriousness. These words appear in this manual and on the safety labels attached to Ransomes machines. For your safety and the safety of others, read and follow the information given with these signal words and/or the symbol shown above.

#### **DANGER**

**DANGER** indicates an imminently hazardous situation which, if not avoided, **WILL** result in death or serious injury.

#### **WARNING**

**WARNING** indicates a potentially hazardous situation which, if not avoided, **COULD** result in death or serious injury.

#### **CAUTION**

**CAUTION** indicates a potentially hazardous situation which, if not avoided, **MAY** result in minor or moderate injury. It may also be used to alert against unsafe practices or property damage.

#### **CAUTION**

**CAUTION** used without the safety alert symbol indicates a potentially hazardous situation which, if not avoided, **MAY** result in property damage.



**MODEL NUMBER:** This number appears on sales literature, technical manuals and price lists.

**SERIAL NUMBER:** This number appears only on your mower. It contains the model number followed consecutively by the serial number. Use this number when ordering parts or seeking warranty information.



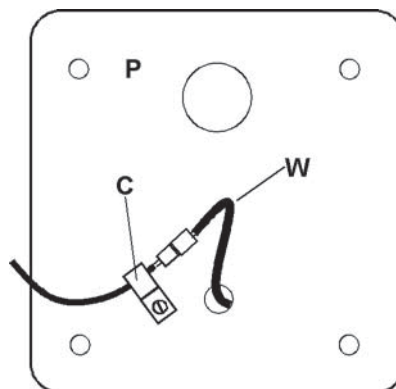
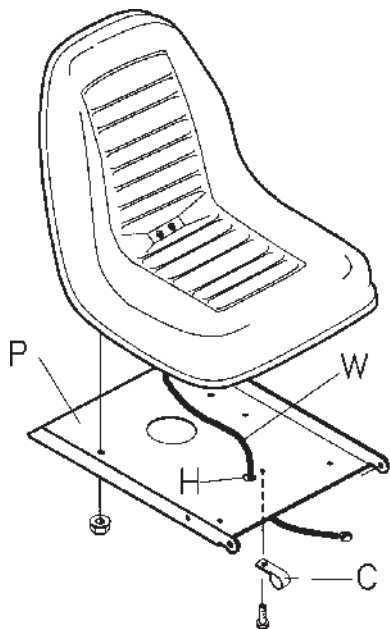
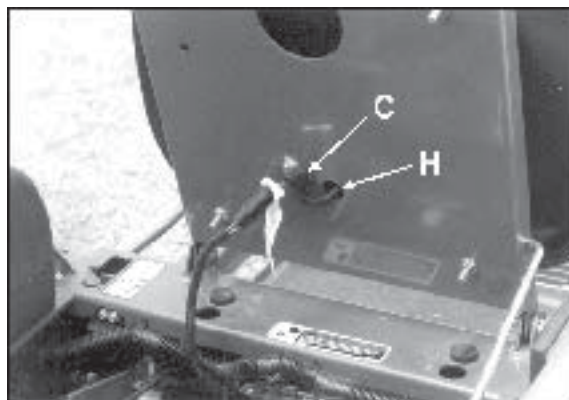
### TOOLS REQUIRED FOR ASSEMBLY

- Wrecking bar
- Claw hammer
- Ratchets: 3/8"
- Sockets: 3/8", 1/2", 17 mm, 19 mm
- Wrenches: two 15/16" (or adjustable), 13 mm, 17 mm, 19 mm
- Level
- Straight edge
- Tire pressure gauge

**NOTE:** All references below to the "right" or "left" are with respect to an operator at the controls.

### 1. INSTALL SEAT

- Position seat over seat plate and route seat wire **W** through hole **H** in seat plate. Drop seat mounting studs through seat plate holes. Secure studs with four 5/16-18 whiz nuts and tighten securely.
- Leave enough seat wire between the seat and seat plate to allow full fore and aft travel of the seat. Secure seat wire on the bottom of the seat plate with clip **C** and a 1/4-20x3/8 thread forming screw.
- Connect the tractor harness to the seat wire.



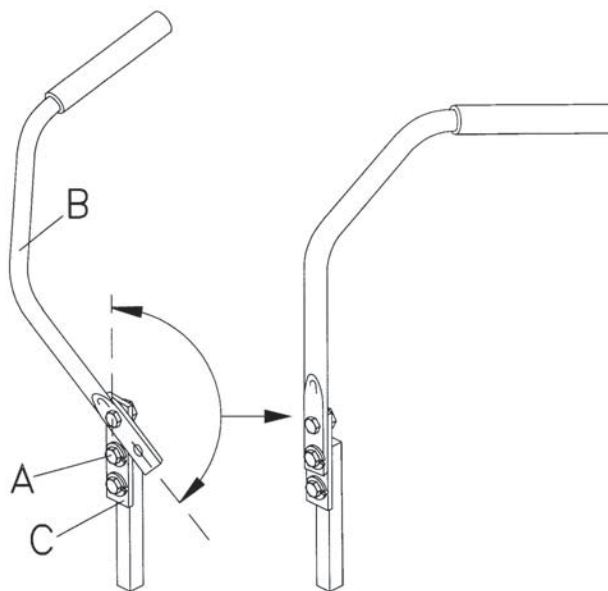
Bottom of seat plate **P** showing clip **C**

- Set tire pressures to 14 lbs/in<sup>2</sup> (1.0 kg/cm<sup>2</sup>). Tires are overinflated for shipping.



### 3. TRACTION LEVERS

- Remove bolt **A**.
- Rotate traction lever **B** into position and secure with bolt **A**. Repeat for the other lever.
- Tighten all fasteners.
- Sit on the machine. If the levers are too long, bracket **C** may be removed to make them shorter.



### 4. FINAL PREPARATIONS

- Check the engine and hydraulic oil levels. Top up with the correct oil if necessary. Use 10W30 motor oil for the engine. Use fresh, clean 15W40 or 20W50 motor oil or 15W50 synthetic motor oil for the hydraulic system.
- Remove the battery from the machine. Fill the battery to the bottom of the vent wells with acid and trickle charge for several hours. Replace the battery in the machine and make the connections, red to positive first, then black (ground) to negative.
- Read Operation and Safety Manual before starting.
- Run engine at full RPM for 5 minutes before engaging blades to allow the engine to be fully lubricated before load is applied.
- Check the hydrostat neutral adjustment. Neutral is set at the factory but may require readjustment if air trapped during the initial oil fill has worked out of the system. See adjustments section later in this manual.
- Do not use the machine without an approved grass collector, the grass discharge chute or mulching plates correctly fitted.



# 218 Estate Series

## MAINTENANCE CHART

MAINTENANCE OPERATION	Maintenance is an ongoing job. These intervals are maximum times between maintenance operations. Perform more often under severe conditions.						
	FIRST 5 HOURS	DAILY	EVERY 25 HOURS	EVERY 50 HOURS	EVERY 100 HOURS	EVERY 200 HOURS	EVERY 500 HOURS
<b>ENGINE</b>							
Consult the engine manual for additional information and instructions							
Check/Top up Oil Level		X					
Check for Leaks		X					
Clean Air Intake Screen		X					
Clean Air Cleaner Precleaner			X				
Clean Air Cleaner Element					X		
Clean Cooling Fins					X		
Change Oil and Filter	X	See engine manufacturer's manual					
Check/Replace Spark Plugs						X	
<b>HYDRAULICS</b>							
Check for Leaks		X					
Check/Top up Oil Level					X		
Change Oil and Filter	X						X
<b>MACHINE</b>							
Check Interlock Operation		X					
Check Tire Pressures		X					
Check/Top up Battery					X		
Lubricate All Points				X			

---

---

---

---

[illegible]

**NOTE: After first 5 hours of operation replace engine oil, hydraulic oil and both filters.**





## **CHECK DAILY**

### **Operator Presence Interlock System - Start Operation**

For the engine to crank, the parking brake must be on, the PTO (blades) off and traction levers in the neutral lock position. Sit in the seat and check, one by one, if the engine will crank with the parking brake off, the blades on, and either traction lever out of neutral lock.

### **Operator Presence Interlock System - Run Operation**

The operator must be in the seat for the engine to run with the parking brake off, the traction levers moved out of the neutral lock position, or the blades on. To check:

1. Start the engine and run at 1/2 throttle with the operator on the machine but raised off the seat.
2. One by one: move the parking brake to the "OFF" position, traction levers out of the neutral lock position (check each independently), and turn the blades on. Each check should kill the engine after 1/2 second. (A 1/2 second delay is built into the system to prevent engine cutout when traversing rough terrain.)

Repair machine before using if the Operator Presence Interlock System does not operate correctly in start or run. Contact your authorized Bob-Cat dealer.

### **Hardware**

Tighten any nuts and bolts found loose. Replace any broken or missing cotter pins. Repair any other problems before operating.

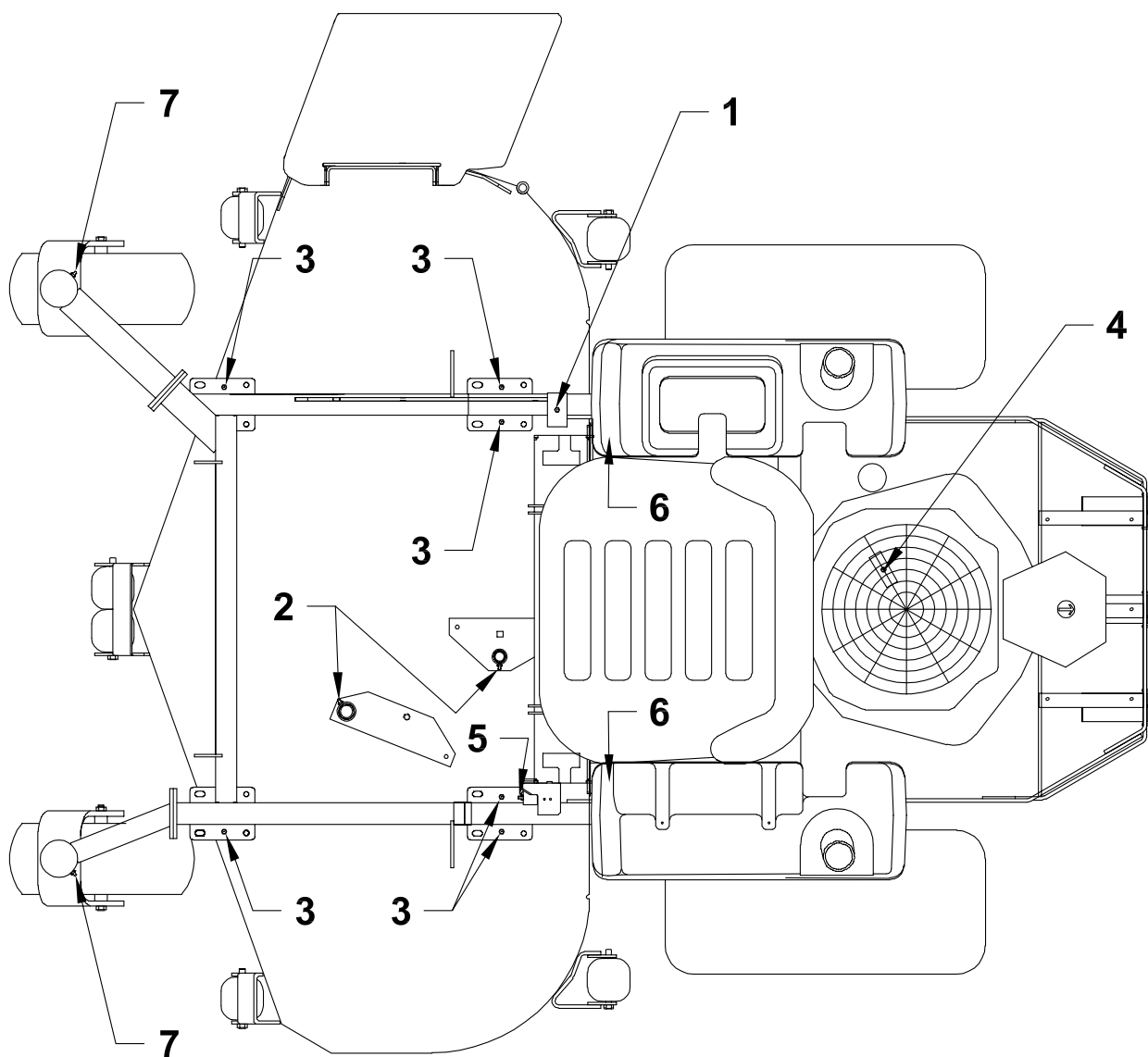
### **Tire pressure**

Tires should be kept inflated at 14 lbs/in<sup>2</sup> (1.0 kg/cm<sup>2</sup>). Improper tire inflation can cause rapid tire wear and poor traction. Uneven inflation can cause uneven cutting.

## **Battery**

Check the electrolyte level at each oil change as follows:

1. Stop engine and remove key.
2. Remove battery vent caps. The electrolyte level should reach the bottom of the vents.
3. Top up, if necessary, with distilled water.
4. Replace vent caps.



### LUBRICATION

Every 50 hours of operation, lubricate the following points (1-6) with grease:

1. Deck lift rockshaft (1 point)
2. Deck idler pivot bearings (2 points)
3. Deck lift pivots (6 points)
4. Hydro belt tensioner (1 point under engine deck)
5. Brake lever pivot (1 point)
6. Push arms (2 points located at rear of cutterdeck under each fuel tank)
7. Caster wheel pivots (2 points)  
(Lubricate every 500 hours or once a year)

**NOTE ON BLADE SPINDLES** - The blade spindles on these machines use a superior sealed bearing that does not require relubrication.



## HYDRAULIC SYSTEM

After the first 5 hours of operation, fluid level in the hydraulic system should be checked every 100 hours or when a leak has occurred. If the fluid is low, check all components for leaks.

To check, remove reservoir cap **M**. The fluid level should be at the bottom of the filler tube. If low, top up (do not overfill). Use one of the oils listed below:

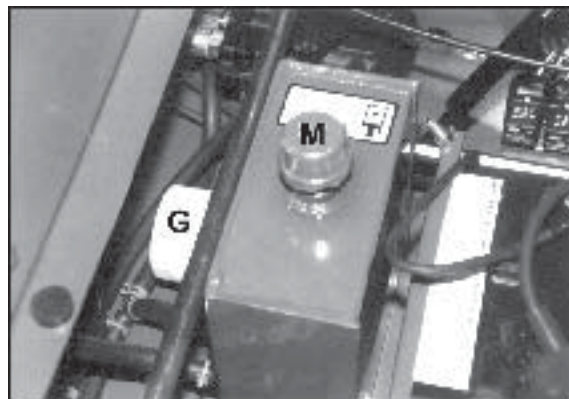
- SAE 15W40 motor oil
- SAE 20W50 motor oil
- 15W50 synthetic motor oil

### AFTER FIRST FIVE (5) HOURS

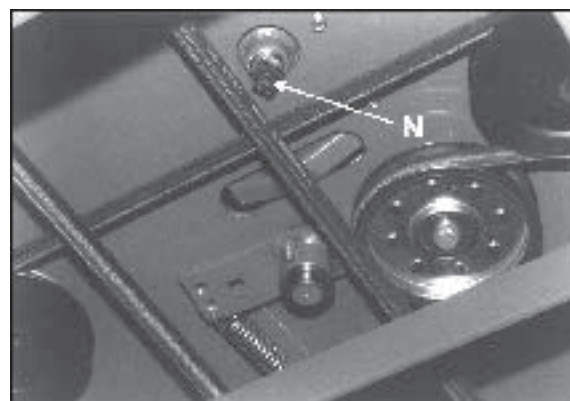
1. Remove plug **N** to drain hydraulic reservoir. Dispose of used oil in accordance with local requirements.
2. Clean and replace the plug.
3. Change hydraulic oil filter **G**.
4. Fill the reservoir with fresh oil to the bottom of the reservoir filler tube, using an oil from the list above. Do not overfill.

### PERIODIC OIL CHANGES

Change the hydraulic fluid and hydraulic filter after each 500 hours of operation using the same procedure given above.



**View from right side**



**View from below machine**

### NOTES:

Before servicing the hydraulic system, stop the engine, disconnect spark plug wires and disengage the PTO.

- After any hydraulic line is opened, plug or cap it promptly to reduce the risk of contamination.
- Do not use teflon tape on hydraulic pipe fittings. Use a liquid sealant that will dissolve into the system.
- Make sure all hydraulic connections are tight and hydraulic hoses and lines are in good condition before applying pressure to system.

### **⚠ WARNING**

The machine's hydraulic system operates under high pressure. When checking for leaks, do not use your hands to attempt to find a leak. Instead, use cardboard or paper. Escaping hydraulic fluid can be under sufficient pressure to penetrate skin and cause serious injury. If hydraulic fluid is injected into the skin, it must be promptly removed by a doctor familiar with this form of injury or gangrene may result.



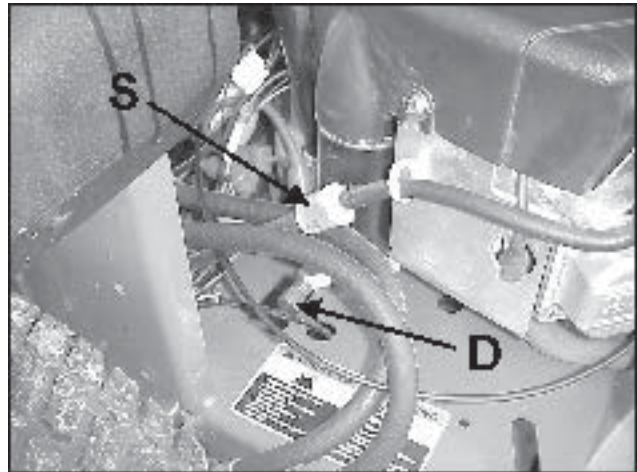
### ENGINE OIL

Do not perform engine maintenance without the engine off, spark plug wires disconnected and PTO disengaged.

#### AFTER FIRST FIVE (5) HOURS

While the engine is warm:

1. Remove drain cap **D** and drain the crankcase. Dispose of used oil in accordance with local requirements.
2. Clean and replace the cap.
3. Change oil filter.
4. Fill the crankcase with fresh oil to the full mark. Do not overfill. See engine manual for oil specifications.



#### DAILY

1. Check oil level with the dipstick.
2. If oil is needed, add fresh oil of proper viscosity and grade. See engine manual for oil specifications. Do not overfill.
3. Replace dipstick before starting engine.

#### PERIODIC OIL CHANGES

1. See engine manual for oil and filter change intervals after the break-in period.
2. Follow instructions for first oil change, above.

#### FUEL FILTER

An inline fuel filter **S** is located at the right side of the engine. Inspect at every oil change to make sure it is clean and unobstructed. Replace if dirty.

### SPARK PLUGS

Remove each plug and check condition.

- Good operating conditions are indicated if the plug has a light coating of grey or tan deposit.
- A white blistered coating indicates overheating. A black coating indicates an “over rich” fuel mixture. Both may be caused by a clogged air cleaner or improper carburetor adjustment.
- Do not sandblast, wire brush or otherwise attempt to repair a plug in poor condition. Best results are obtained with a new plug.
- Set plug gap as specified in engine manual.



### DUAL ELEMENT AIR CLEANER

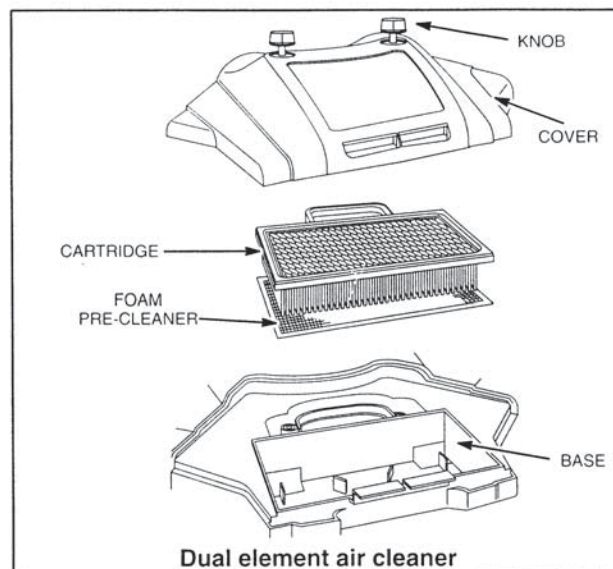
The air cleaner with this engine has a high density paper air cleaner cartridge surrounded by an oiled, foam precleaner element. Both should be inspected regularly and maintained.

Clean and re-oil precleaner element every 25 hours (more often under dusty conditions).

1. Disassemble air cleaner cover.
2. Remove precleaner by sliding it off the paper cartridge.
3. Wash precleaner in kerosene or liquid detergent and water.
4. Wrap precleaner in cloth and squeeze to remove cleaner.
5. Saturate precleaner in engine oil. Squeeze to remove excess oil.
6. Re-install precleaner over paper cartridge. Reassemble air cleaner components and screw assembly down tight.

Every 100 hours (more often under very dusty or dirty conditions), check the paper cartridge.

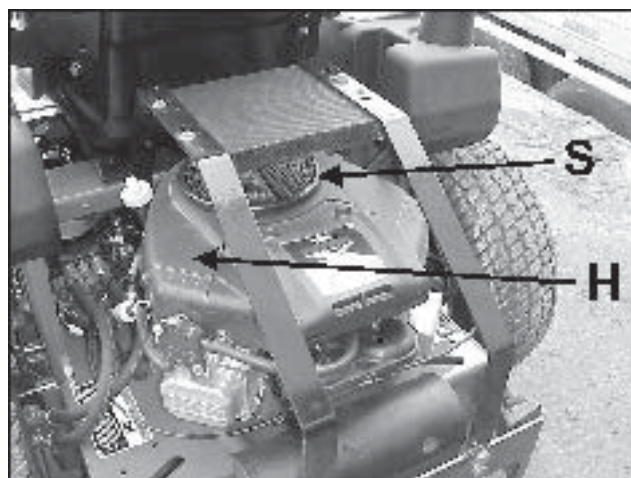
- Clean by tapping gently.
- Do not wash the cartridge or use compressed air which can cause damage.
- Replace when cartridge is dirty, bent or damaged.



### ENGINE COOLING

Continued operation with a clogged cooling system will cause severe overheating and can result in engine damage.

- **Daily:** Clean air intake screen **S**.
- **Every 100 hours:** Clean cooling fins beneath blower housing **H** with reference to information in the engine manufacturer's manual.

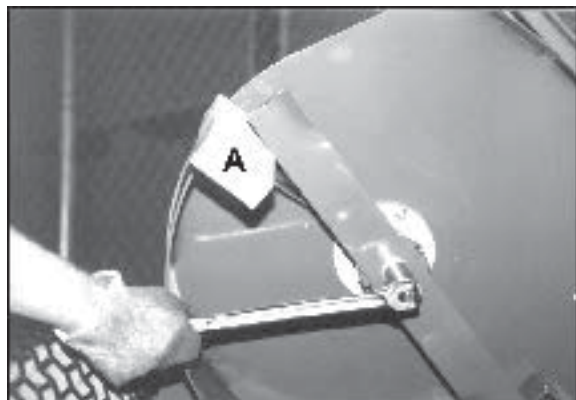




### BLADE REMOVAL

Follow these instructions to prevent injury during blade removal:

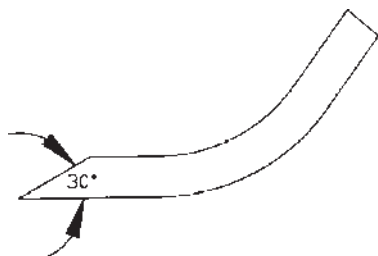
1. Loosen with a box wrench or a socket and long breaker bar. To gain additional leverage, slip a long pipe or thick-walled tube over breaker bar or wrench.
2. Insert wood block **A** as shown, with grain perpendicular to blade, to prevent blade from turning when loosening.
3. Wear thickly padded gloves. Keep hands clear of blade path. Blades may rotate when bolt releases.



### SHARPENING

Blades may be sharpened by filing or grinding.

- Inspect blades before sharpening.
- Replace bent or cracked blades.
- Replace blades when the lift portion has worn thin.
- Maintain cut angle at 30°.
- Do not overheat blades when sharpening.
- Always use Bob-Cat blades. Use of another manufacturer's blades may be dangerous.



### BLADE BALANCE

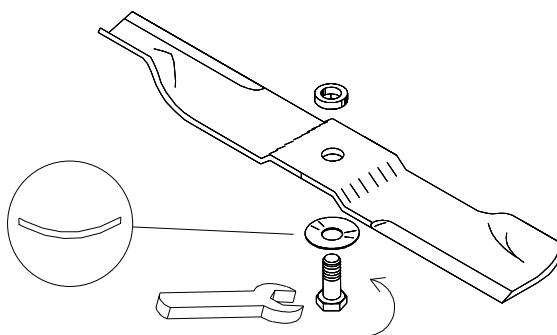
Blade balance must be maintained at 5/8 oz-in (19.4 g-cm) or less. Failure to keep blades balanced causes excess vibration, wear, and shortened life of most components of the machine.

#### To balance a blade:

1. Sharpen blade first.
2. Balance the blade at the center.
3. Attach a 1/8 oz (3.9 g) weight at a distance 5" (127 mm) from center on the light end. This should make the light end the heavy end:
  - If it does, the blade is balanced.
  - If does not, file or grind the heavy end until the addition of the weight makes the light end the heavy end.

### BLADE INSTALLATION

1. Wear thickly padded gloves to prevent cuts from the sharp blade.
2. Insert the blade bolt, in order, through the conical washer (cup side toward the blade, as shown), the blade, and the blade spacer.
3. Install assembly on the blade spindle.
4. Torque the blade bolt to 70 ft-lbs.







### HEIGHT OF CUT

The height of cut is set by moving height of cut pin **N** to the hole designated for the height of cut desired.

To change the height of cut:

1. Lift the deck to the highest position.
2. Move pin **N** to the selected hole.
3. Lower the deck until the lift lever is stopped by the pin.

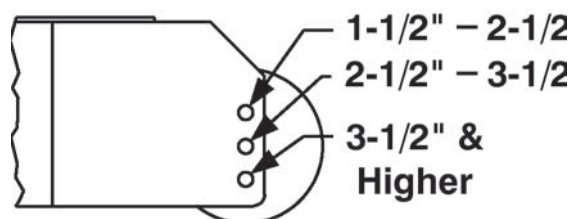
#### NOTES:

- Height of cut may vary due to the amount of tread on the tires, tire diameter or inflation pressure.
- For best results, adjust the rear deck rollers for the height of cut to be used (see below).



### REAR DECK ROLLERS

The rear outside deck rollers are adjustable up and down to provide improved deck flotation and scalping protection at various heights of cut. They are not intended to ride continuously on the ground. Adjust no closer than 3/8" (10mm) to the ground.



Height of cut ranges for roller adjustment

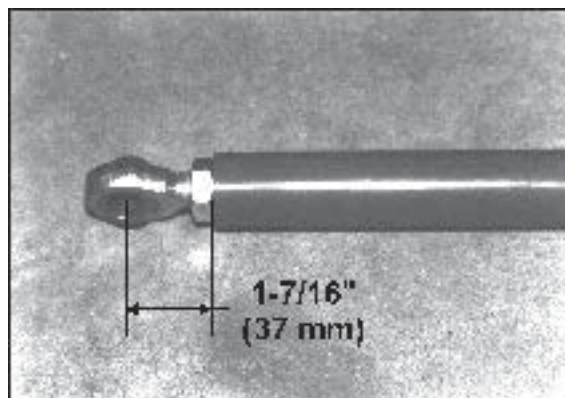


### PUSH ARMS

The push arm rod ends must be adjusted evenly to:

- locate the deck perpendicular to the front-to-rear axis of the machine; and
- so the notch at the front of the engine deck clears the push arm bracket on the rear of the cutterdeck when the cutterdeck is raised to the transport position.

Adjust the rod end length to 1-7/16" (37 mm) to start. If any additional adjustment is required, adjust both rod ends so the same number of threads show.



### BELTS

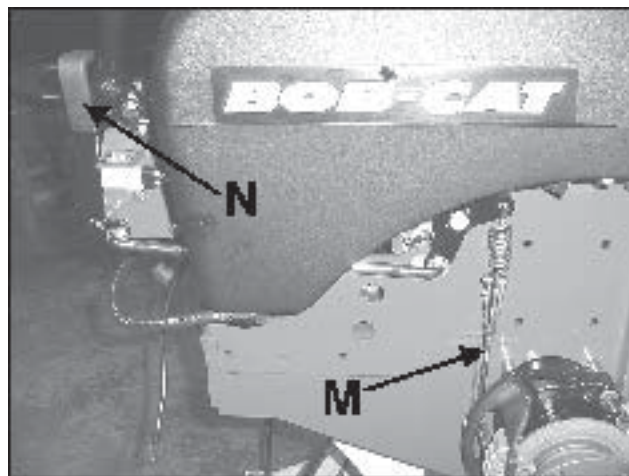
All belts are tensioned by spring loaded idlers. No adjustment is required.

### PARKING BRAKE

Start with parking brake **N** in the OFF position.

1. Disconnect one end of rods **M** (at brakes on both sides of the machine).
2. Move the parking brake lever to the ON position.
3. Adjust rods **M** on each brake to be 3/4" short of connecting to the spring when all the slack is taken out of the brake linkage and brake lever **N**.
4. Move the parking brake to the OFF position and reconnect rods **M**.

This adjustment will cause the brake springs to stretch 3/4" when the brake is in the ON position to provide the correct parking brake force without overloading the brake.



Parking brake assembly (tire and deck not shown for clarity - brake in ON position).



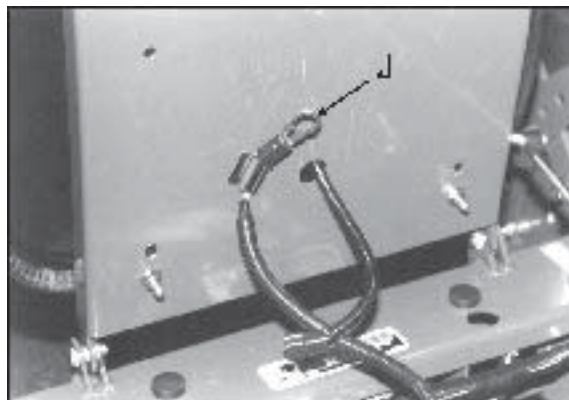


## HYDROSTAT ADJUSTMENTS

A turnbuckle-style hydrostat neutral adjustment is provided.

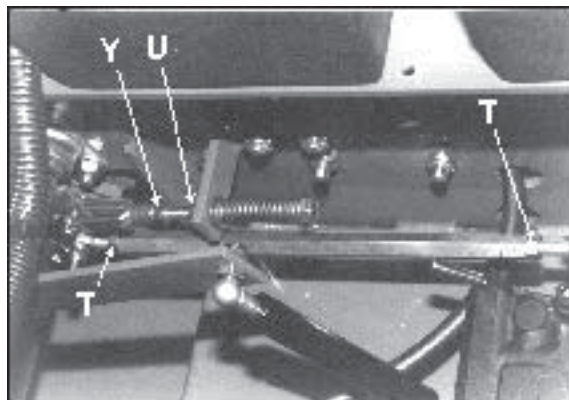
### Neutral:

1. Support the machine with the rear wheels off the ground. Use jackstands or equivalent support. Do not rely only on mechanical or hydraulic jacks.
2. Move the traction levers out into the neutral lock position and raise the seat.
3. Disconnect the seat switch and temporarily connect the two terminals with jumper wire **J** as shown.
4. Start the engine and run at low speed.
5. Loosen jam nuts **T** at both ends of the turnbuckle.
6. Rotate the turnbuckle until the corresponding wheel stops turning. Lock the turnbuckle jam nuts. Run the engine up to high idle to check the adjustment. Readjust if necessary.
7. Repeat steps 5 and 6 for the opposite side.
8. Remove the jumper wire and reconnect the seat switch.



### Reverse Return:

1. Move traction levers out to the neutral lock position and raise the seat.
2. Locknut **U** should be run on the bolt as far as it will go.
3. Loosen jam nut **Y**. Adjust the clevis yoke by turning the head of the bolt until the clevis pin just makes contact with the rear of the slot in the lever it connects with. Tighten jam nut **Y**.
4. Repeat steps 2 and 3 for the opposite side.



**Right side adjustments**  
(wiring harness and seat rod removed for clarity)

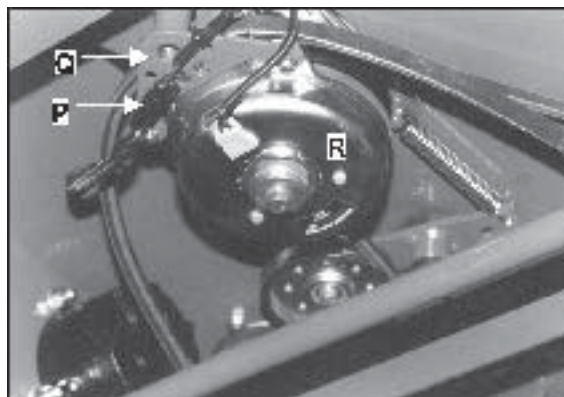
**NOTE:** A slight creep in reverse is acceptable provided the wheel does not turn and the hydrostat pump does not whine when the parking brake is on.



**Note:** Always use Bob-Cat replacement belts, not general purpose belts. Bob-Cat belts are specially designed for use on commercial mowers and will normally last longer.

### ENGINE-CUTTERDECK (PTO) BELT

1. Set the cutterdeck in the lowest height-of-cut position.
2. Attach a short extension to a 3/8" drive ratchet. Insert the ratchet extension into the square hole in the idler arm and use the ratchet to rotate the idler assembly enough to remove the belt. Remove the belt from the idlers and center cutterdeck pulley. Push belt back under engine deck.
3. Disconnect the electric clutch from the wire harness at plug **P**.
4. Remove the carriage bolts securing torque restraint **Q** to clutch **R**. Remove torque restraint.
5. Remove old belt from the machine.
6. Install a new belt by performing the these steps in reverse order.





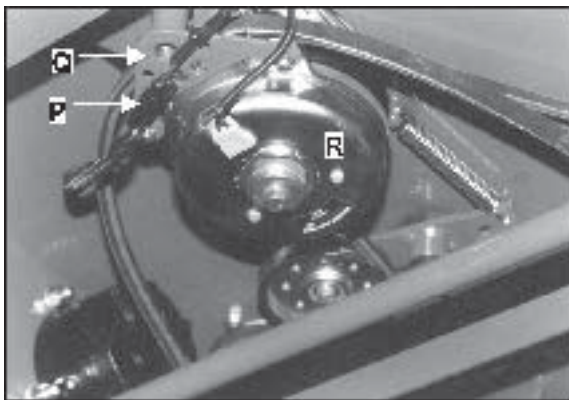
### **CUTTERDECK BELT**

1. Set the cutterdeck in the lowest height-of-cut position.
2. Remove the engine-cutterdeck belt from the deck idlers and pulley (see engine-cutterdeck belt replacement). Push it aside but don't remove it from the machine.
3. Run the cutterdeck belt off the idler as shown. Remove it from the deck.
4. Install the new belt by performing these steps in reverse order. Take care to get the new belt on the correct side of the belt guides.
5. Re-install engine-cutterdeck belt (see engine-cutterdeck belt replacement).



### **PUMP-DRIVE BELT**

1. Remove engine-cutterdeck belt (see engine-cutterdeck belt replacement).
2. Attach an extension to a 3/8" drive ratchet. Insert the ratchet extension in the square hole of the pump drive idler arm. Use the ratchet handle to rotate it enough to remove the pump drive belt.
3. Install a new pump drive belt in the same manner as it was removed.
4. Re-install engine-cutterdeck belt (see engine-cutterdeck belt replacement).





## POWER UNITS

### ENGINES :

**Construction:** Aluminum block with cast-in cast iron sleeves. Aluminum head.

**Configuration:** 4-stroke, vertical shaft, V-twin cylinder, overhead valve, air-cooled.

### DRIVE SYSTEM:

Full hydrostatic pump and wheel motor combination for independently controlled drive wheels.

**Pump:** Hydrogear BDP-10L 10cc variable displacement piston pump.

**Motors:** Parker/Ross 15 cu.in. displacement MB series. Direct drive 1-1/4" (31.8mm) diameter output shaft.

**Turn Radius:** 0"

### OPERATOR PRESENCE

#### INTERLOCK SYSTEM:

**Start:** The PTO (blades) must be off, traction levers in neutral lock, and parking brake on for engine to crank.

**Run:** Operator must be in seat to take parking brake off, to move traction levers out of the neutral lock position, or to turn the PTO (blades) on or the engine will kill. The parking brake must be off for the traction levers to move out of the neutral lock position.

The operator may leave the seat with the engine running if the parking brake is on, the PTO (blades) is off, and the traction levers are in the neutral lock position. A time delay eliminates annoying engine cutout from operation over rough terrain.

### WEIGHT:

1025 lbs (465 kg)

### CONTROLS:

Throttle; choke; power takeoff (PTO) clutch switch; traction levers; parking brake lever; lift lever.

### FUEL SYSTEM:

One tank on each side of operator, each with a shutoff (1/4 turn). Total capacity 9-1/2 gallons (40 liters). Fuel selector/shutoff switch on front panel (1/4 turn). Replaceable fuel filter.

### MAXIMUM GROUND SPEEDS:

**Forward:** 8 mph (12.9 km/h)

**Reverse:** 4 mph (6.4 km/h)

### WHEELS & TIRES:

#### Drive wheels:

942211: 24 X 10.50-12 4-Ply Turf Tread Tires

**Casters:** 13 X 5.00-6 4-Ply Rib Tread Tires

**Pressure:** 14 p.s.i. (1 kg/cm<sup>2</sup>)

### BRAKING:

Hayes disc type parking brakes. Spring applied for overload protection.

### SEAT:

High back, foam padded with standard armrests. Fore and aft adjusters, hinged for easy tilt-up access to pumps and battery. Prop rod to hold in up position. Internally mounted seat switch.



## 218 Estate Series

## SPECIFICATIONS

ENGINE	
MODEL NUMBERS	942211
MANUFACTURER	Briggs & Stratton
MODEL	405777
CYLINDERS	2
COOLING	Air
BORE/STROKE	2.97 X 2.89 (75.44 X 73.4mm)
DISPLACEMENT	40 cu.in. (656 cc)
COMPRESSION	8.1:1
OUTPUT POWER	18hp (13.4kw) @ 3600 rpm
OUTPUT TORQUE	31.7 ft-lb (43 J) @ 2550 rpm
LUBRICATION	FULL PRESSURE
GOVERNOR	Mechanical
AIR CLEANER	Dual element
IGNITION SYSTEM	Electronic
CHARGING SYSTEM	16 amp, regulated
BATTERY	BCI group U1
FUSES	Two, 20 amp blade
FUEL CONSUMPTION @ MAX LOAD/ SPEED	1.88gal./hr (7.1 l/hr)

FLUID CAPACITIES	QUANTITY	TYPE	FILTER
FUEL	9.5 gal. (40 l)	REGULAR, UNLEADED GASOLINE	REPLACEABLE
ENGINE OIL	2 qts (1.9 l) BRIGGS & STRATTON	SAE 10W30	SPIN-ON REPLACEABLE
HYDRAULIC OIL	2.6 qts (2.46 l)	SAE 15W40 MOTOR OIL SAE 20W50 MOTOR OIL 15W50 SYNTHETIC	10 MICRON SPIN-ON REPLACEABLE



CUTTERDECKS	
MODEL NUMBER	942211
TYPE	Side Discharge
CUTTING WIDTH	52.5" (133 cm)
WIDTH	N/A
WIDTH (CHUTE UP)	56.25" (143 cm)
WIDTH (CHUTE DOWN)	64.5" (164 cm)
CUTTING UNIT	One high lift blade (low lift optional)
NUMBER OF CUTTING UNITS	3
BLADE LENGTH	18" (46 cm)
BLADE THICKNESS	.205" (5.2 mm)
TIP SPEED	15694 ft/min 4784 m/min
DAILY PRODUCTION (8 hr @ 6 mph)	Up to 25.5 acres (10.3 ha)

### CONSTRUCTION:

Fabricated and welded or bolted 10-gauge, double-layer steel top with 7-gauge side skirts. Full floating design.

### CUTTERDECK DRIVE SYSTEM:

Electric clutch/brake drives belt directly from engine to center spindle of cutterdeck. No twists in drive belt.

### SPINDLES:

Top mounted and maintenance free, with 1" shaft in precision machined, ductile iron housing

### ANTI-SCALP ROLLERS:

52" Cutterdecks - 5 Rollers

### CUTTING HEIGHT & PRODUCTION:

**Height:** Spring assisted lift lever allows easy setting of cut heights from 1-1/2" to 4-1/2" in 1/4" increments. "Set and forget" feature allows height of cut to be set and returned to without searching from operator position.

### SPECIFIC TORQUES:

BLADE BOLT TORQUE: 70 FT-LBS (95 Nm)

WHEEL HUB NUTS: 225 FT-LBS (237 Nm)

ENGINE CRANKSHAFT BOLT: 50 FT-LBS (68 Nm)



**218  
Estate  
Series**

**PARTS SECTION**

---

# **PARTS SECTION**

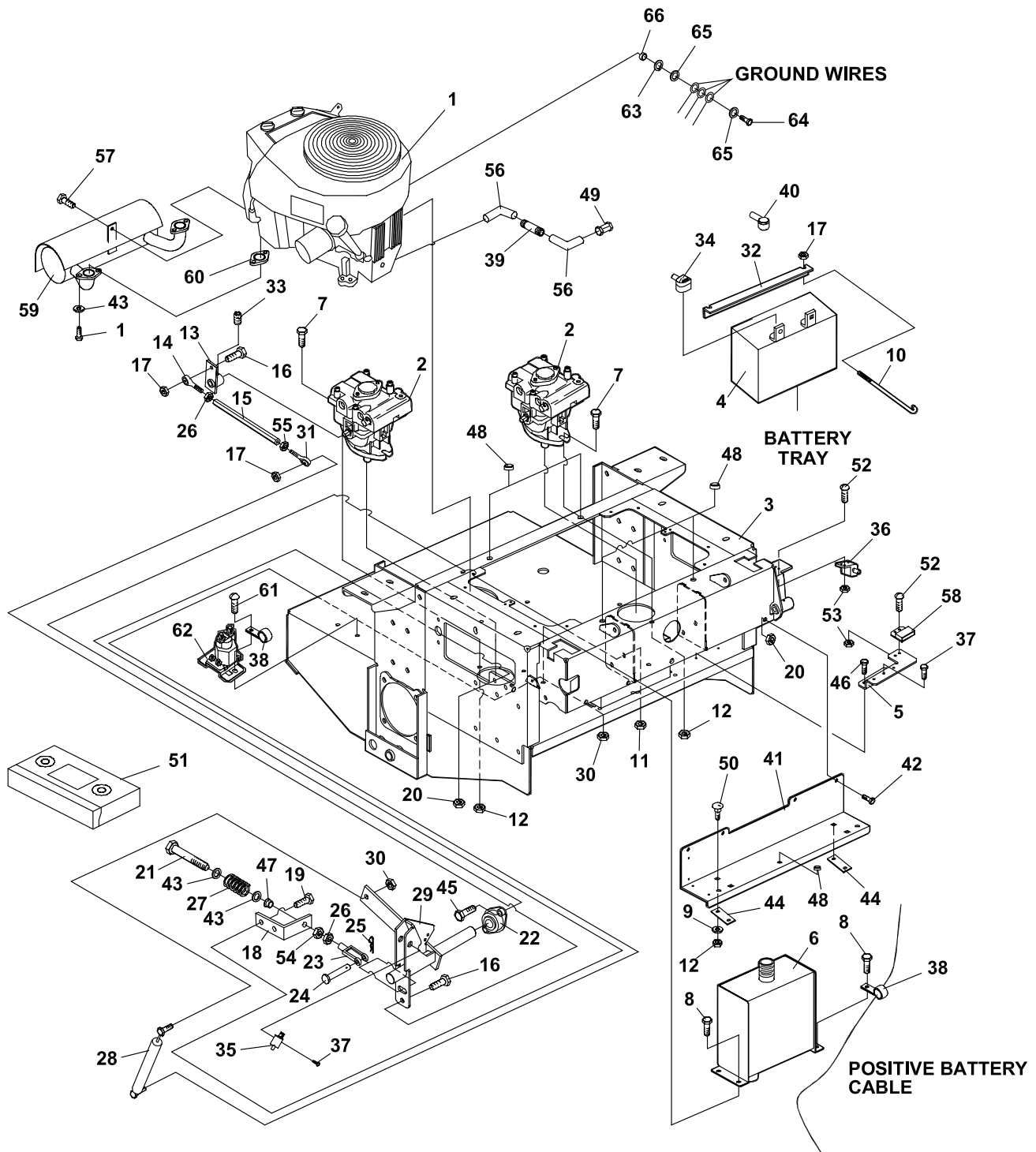


# UPPER ENGINE DECK ASSY

218  
Estate  
Series



FIGURE 1







# 218 Estate Series

2722097-01

## UPPER ENGINE DECK ASSY

FIGURE 1

ITEM	PART NO.	DESCRIPTION	QTY	ITEM	PART NO.	DESCRIPTION	QTY
1-1	2722010	ENG-BRIGGS INTEK 18HP	1	1-41	2182404.7	PLATE, KICK	1
	2722461	AIR FILTER CARTRIDGE	1	1-42	64205-007	BLT-M10-1.5x20	4
	2722462	FOAM PRE-CLEANER	1	1-43	64163-55	WASHER .328X.75X14 GA	8
	2722463	OIL FILTER	1	1-44	2188146	STRIP, WEAR	2
	2722464	FUEL FILTER	1	1-45	64123-15	BLT-HEX 3/8-16X3/4	8
	(EXHAUST BOLTS SUPPLIED WITH ENGINE)			1-46	64152-23	SCREW 1/4-20X3/8	2
1-2	2721615	PUMP-HYDRO	2	1-47	38304-02	S BRG FLGD PLASTIC	2
	(SEE FIGURE 8 FOR BREAKDOWN)			1-48	810149	BUMPER-RUBBER	7
1-3	2720861.2	WLDMT-ENGINE DECK	1	1-49	118036	HEX CAP 3/8 PIPE	1
1-4	108055	BATTERY	1	1-50	64243-02	BLT-CRG M10-1.5X20	4
1-5	2722293.7	BRKT-RELAY MTG	1	1-51	2810594	VIDEO-BOBCAT 100/200	1
1-6	2186211	S HYD RESERVOIR W/LAB	1	1-52	64152-46	SCR-SLT HH #10-24	4
1-7	64263-013	BLT-FLG HD M10-1.5 X 30	4	1-53	64025-15	NUT-HEX #10-24 KEPS	4
1-8	64197-016	BLT-TR 3/8-16X1 1/2	4	1-54	64229-08	LOCKNUT-NYLON 5/16-24	2
1-9	64251-004	WASHER-M10	4	1-55	64025-33	NUT- 5/16-24 LH	2
1-10	831861	BOLT-BENT BATT HOOK	2	1-56	2722175	FTG-45DEGSTREL3/8NPTF	2
1-11	64141-4	NUT-WLF 3/8-16	8	1-57	64197-019	BLT-TDFM 12-24 X 5/8	1
1-12	64237-03	LOCKNUT-NYLON M10-1.5	12	1-58	2188154	MODULE-DELAY	1
1-13	4118430	ARM-PUMP	2	1-59	2722034	ASSY-MUFFLER	1
1-14	38369-02	ROD END BALL JOINT	2	1-60		GASKET-MUFFLER	2
1-15	2188140	TURNBUCKLE	2		(OBTAIN THROUGH BRIGGS & STRATTON DEALER)		
1-16	64205-003	BLT-MET M8-1.25 X 30	4	1-61	64152-27	1/4-20X5/8 LG SP SCREW	2
1-17	64229-02	LOCKNUT-NYLON 5/16-18	4	1-62	38665	SOLENOID	1
1-18	2182405.7	BRKT-REVERSE RETURN	2	1-63	64006-01	LOCKWSHR-HELICAL 1/4	1
1-19	A1104057	BLT-M10-1.50 X 25	4	1-64	64123-89	BLT-HEX 1/4-20X3/4	1
1-20	64246-03	WIZ NUT-MET M10-1.5	8	1-65	64163-03	WSHR-.256IDX.62ODX18GA	2
1-21	64123-205	BLT-HEX 5/16-24 X 4	2	1-66	2722459	SPCR-.375ODX.259IDX.16LG1	
1-22	2188145	BEARING-SELF ALIGNED	4				
1-23	38020N	CLEVIS-YOKE PLATE	2				
1-24	64188-02	PIN-CLEVIS 5/16 X 1	2				
1-25	64168-2	HAIRPIN COTTER	2				
1-26	64025-03	NUT-HEX 5/16-24	2				
1-27	2188139	SPRING-COMPRESSION	2				
1-28	2722384	DAMPENER	2				
1-29	4112105.7	WLDMT-MTN CTRL RH	1				
	* 4112104.7	WLDMT-MTN CTRL LH	1				
1-30	64237-05	LOCKNUT-NYLON M8-1.25	4				
1-31	38369-01	ROD END BALL JOINT	2				
1-32	2182427.7	HOLD DOWN, BATTERY	1				
1-33	64192-06	SETSCR SQHD 5/16-18X3/4	2				
1-34	112386	BOOT, BAT TERM POS	1				
1-35	108208	SWITCH, DBL POLE	2				
1-36	2188156	SWITCH NONO DBL POLE	1				
1-37	64197-015	BLT-TDFM #10-32X1/2 TRX	7				
1-38	48228-2A	CABLE CLIP 3/4 W/INSTN	2				
1-39	48024-19A	NIPPLE-PIPE 3/8NPTF X 2.0	1				
1-40	2308095	COVER-TERMINAL	1				

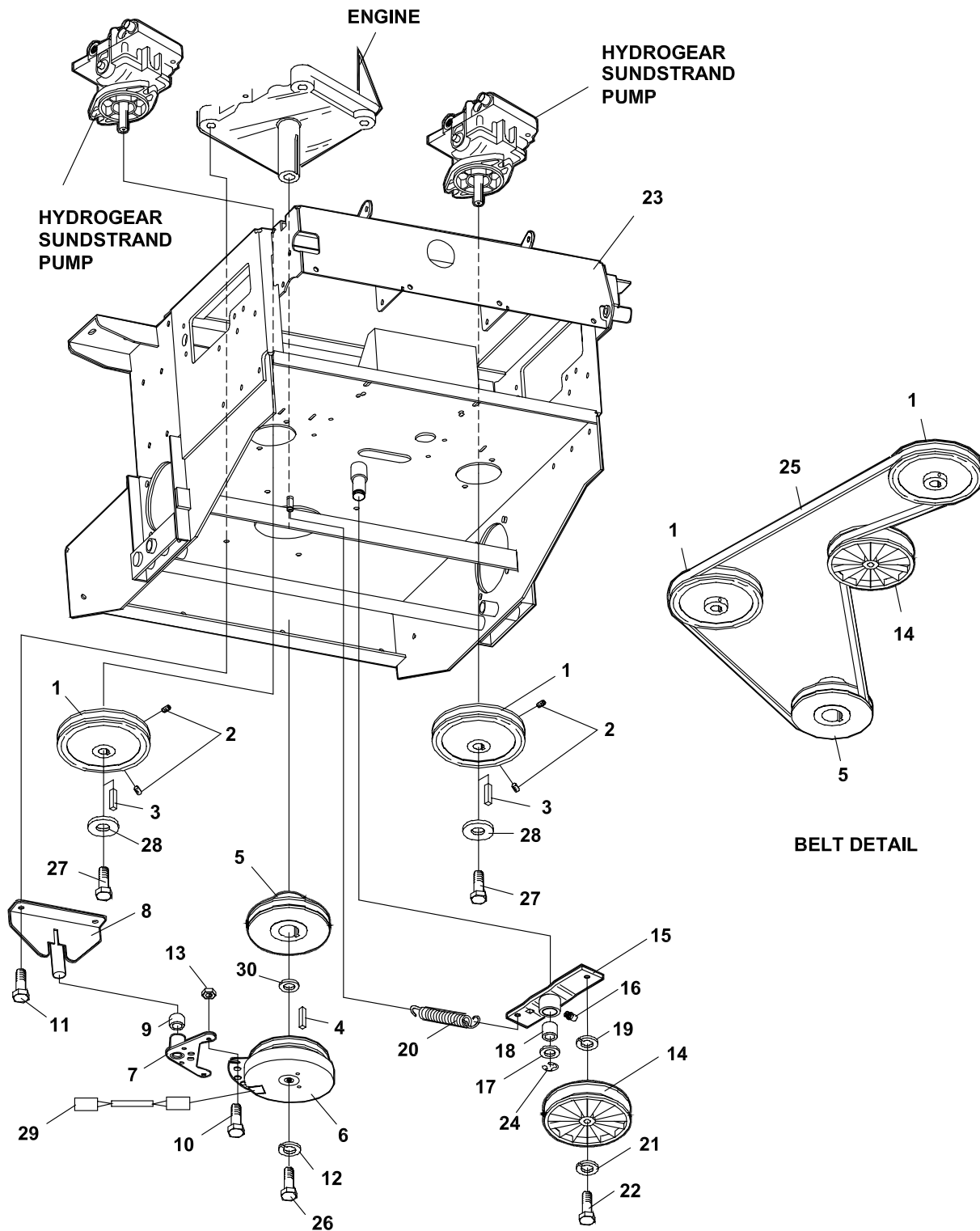
\* NOT ILLUSTRATED

# LOWER ENGINE DECK ASSY/CLUTCH

218  
Estate  
Series



FIGURE 2



TORQUE TO 50 FT/LBS +/-10%



# 218 Estate Series

2722097-02

## LOWER ENGINE DECK ASSY/CLUTCH

FIGURE 2

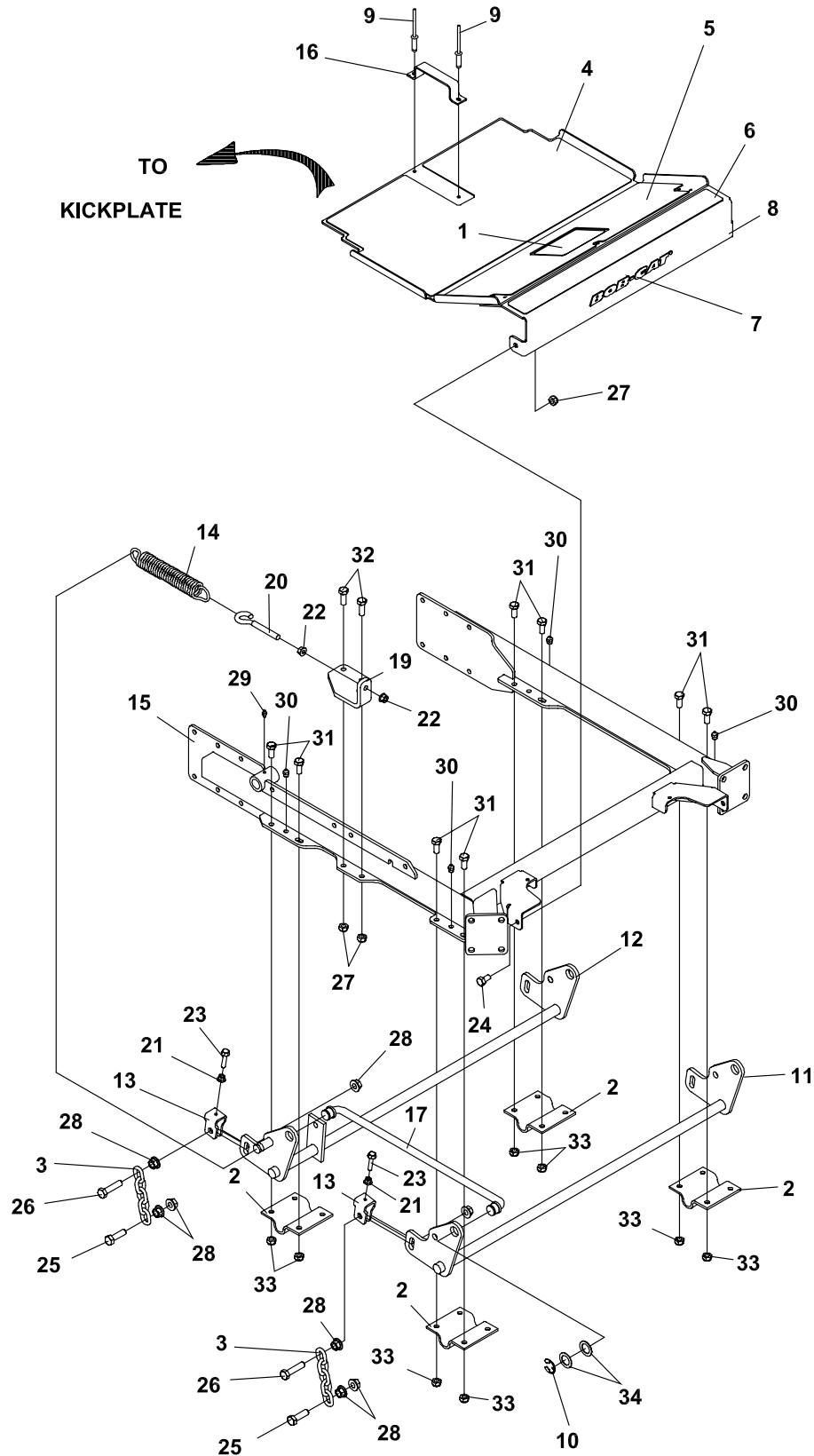
ITEM	PART NO.	DESCRIPTION	QTY	ITEM	PART NO.	DESCRIPTION	QTY
2-1	2722382	PULLEY-PUMP	2				
2-2	64044-1	SCREW-SET 1/4-20X1/4	4				
2-3	64238-03	KEY-MET 5mm SQX28mm	2				
2-4	64164-10	1/4X1/4X1 1/4 SQ END KEY	1				
2-5	4121339	PULLEY-4.25 ENGINE	1				
2-6	2722016	CLUTCH-ELECTRIC (INCLUDES 2720949 WIRE ASSY)	1				
2-7	2721331.7	WLDMT-CLUTCH STOP	1				
2-8	2186147.7	WLDMT-BRKT CLUTCH	1				
2-9	38304-03	BEARING-PLASTIC	1				
2-10	64205-001	BLT-MET M8-1.25X20	2				
2-11	64197-005	BLT-TR 3/8-16X1 1/4	4				
2-12	64006-06	LCKWSHR-HELICAL 7/16	1				
2-13	64265-04	NUT-FL NYL LOCK M8-1.25	2				
2-14	2308000	PULLEY-IDLER 4.00 E.O.D.	1				
2-15	2306082.7	WLDMT-IDLER ARM	1				
2-16	85010N	STRAIGHT ZERK FITTING	1				
2-17	64163-65	WASHER 18 GA	1				
2-18	65103A	BEARING-BUSHING	1				
2-19	33148-01	SPACER	1				
2-20	38219	SPRING-TENSION	1				
2-21	64006-03	LCKWSHR-HELICAL 3/8	1				
2-22	64123-21	BLT-HEX 3/8-24X1 1/4	1				
2-23	2720996	S ENGINE DECK WLABS	1				
2-24	64221-04	E-RING .875	1				
2-25	2188128	BELT-TRACTION DRIVE	1				
2-26	64123-78	BLT-HEX 7/16-20X2-1/2	1				
2-27	64205-013	BLT-MET M6-1X12	2				
2-28	64209-09	WASHER-CONICAL SPRING	2				
2-29	2720949	ASSY-CLUTCH WIRE	1				
2-30	64163-44	WSHR 1.75X1.140X14GA	1				

# CRADLE ASSEMBLY

218  
Estate  
Series



FIGURE 3





# 218 Estate Series

2722087-03

## CRADLE ASSEMBLY

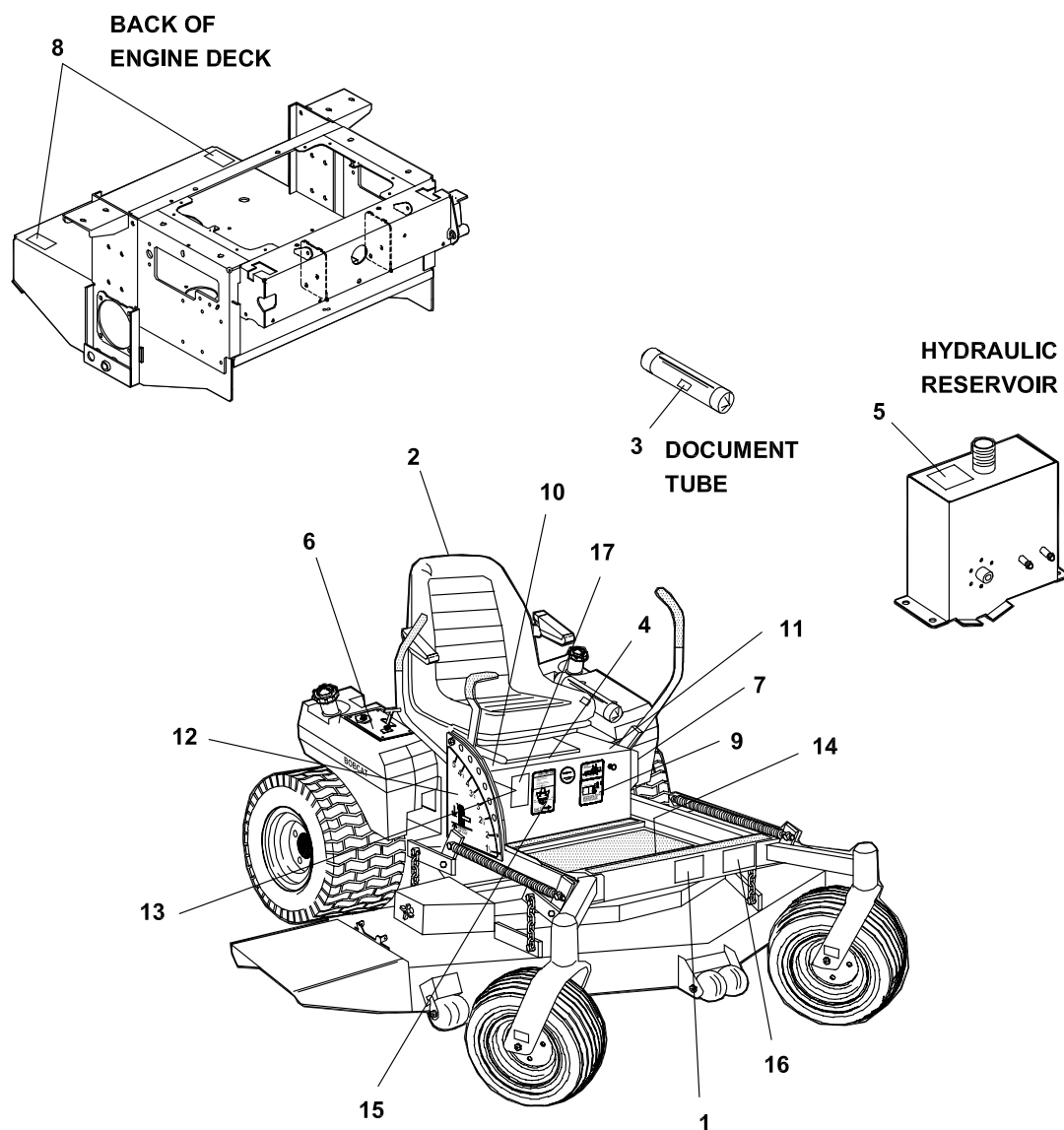
FIGURE 3

ITEM	PART NO.	DESCRIPTION	QTY	ITEM	PART NO.	DESCRIPTION	QTY
12-1	2000695	LABEL-WARN/USING	1				
12-2	2182356.7	BRKT-SHAFT HANGER	4				
12-3	2188127	CHAIN-6.35 5 LINKS	4				
12-4	2721859	MAT-FOOT PLATE LOWER	1				
12-5	2721860	MAT-FOOT PLATE MIDDLE	1				
12-6	2721861	MAT-FOOT PLATE UPPER	1				
12-7	2721971	LABEL-BOBCAT DIE CUT	1				
12-8	2721862	S-FOOT PLATE	1				
		(INCLUDES 4-7, 9 & 16)					
12-9	64215-07	RIVET-POP IFI #84	2				
12-10	64221-04	E-RING.875	4				
12-11	2722558.2	WLDMT-DECK LIFT, FRONT	1				
12-12	2722559.2	WLDMT-DECK LIFT, REAR	1				
12-13	2722630	CLIP-DECK HEIGHT ADJ	4				
12-14	2722719	SPRING-DECK LIFT	2				
12-15	2722723.2	WLDMT-CRADLE	1				
12-16	32418-04	HANDLE W/SLOT	1				
12-17	4109960	ROD-DECK LIFT	2				
12-18 *	4111842.7	BRKT-SPRING ANCHOR, LH	1				
12-19	4111843.7	BRKT-SPRING ANCHOR, RH	1				
12-20	4113682	ROD-SPRING MOUNT	2				
12-21	64141-2	NUT-WLF 1/4-20	4				
12-22	64141-4	NUT-WLF 3/8-16	4				
12-23	64197-020	BLT-TDFM 1/4-20X1-1/2	4				
12-24	64205-007	BLT MET M10-1.50X20	2				
12-25	64205-029	BLT-MET M12X1.75X40	4				
12-26	64205-060	BLT-MET M12-1.75X50	4				
12-27	64237-03	LOCKNUT-NYLON M10-1.5	2				
12-28	64246-04	NUT-WHIZ M12-1.75	16				
12-29	85010N	ZERK, 1/4-28	1				
12-30	85051	ZERK-1/8 PIPE	6				
12-31	64263-013	BLT-FLG HD M10-1.5 X 30	15				
12-32	A110406	SCREW,M10X1.5X30 HH	4				
12-33	64265-05	NUT-FL NYL LOCK M10-1.5	15				
12-34	64163-65	WSHR.890X1.375X18GA	8				

\*NOT ILLUSTRATED



FIGURE 4





# 218 Estate Series

2722097-04

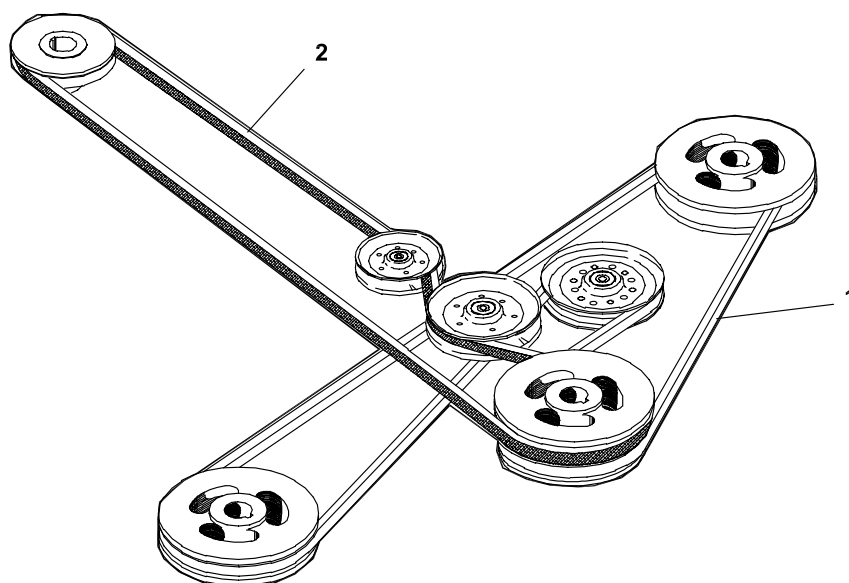
## DECALS

FIGURE 4

ITEM	PART NO.	DESCRIPTION	QTY	ITEM	PART NO.	DESCRIPTION	QTY
4-1	2721971	LABEL-BOBCAT DIECUT	1				
4-2	2721807	LABEL-BOBCAT TEXTRON	1				
4-3	2000735	LABEL-OPER MAN	1				
4-4	2000590	LABEL, WARN BATTERY	1				
4-5	2000691	LABEL - HYDR OIL FILL	1				
4-6	2722128	LABEL-CONTROL PANEL	1				
4-7	2000693	LABEL - PARK BRAKE	1				
4-8	2000698	LABEL(DBL) - FUEL/LEAKS	2				
4-9	4114158	LABEL-TIRES	1				
4-10	2000700	LABEL - RH TRACTION	1				
4-11	2000701	LABEL - LH TRACTION	1				
4-12	2720742	LABEL-HT CUT OUTER	1				
4-13	2720743	LABEL-HT CUT INNER	1				
4-14	2722324	LABEL-WARNING	1				
4-15	2000706	LABEL-FUEL	1				
4-16	2722094	LABEL-218ES DIE CUT	1				
4-17	340830	DECAL-CAUTION SPANISH	1				



FIGURE 5







# 218 Estate Series

2722097-05

## BELTS

### FIGURE 5

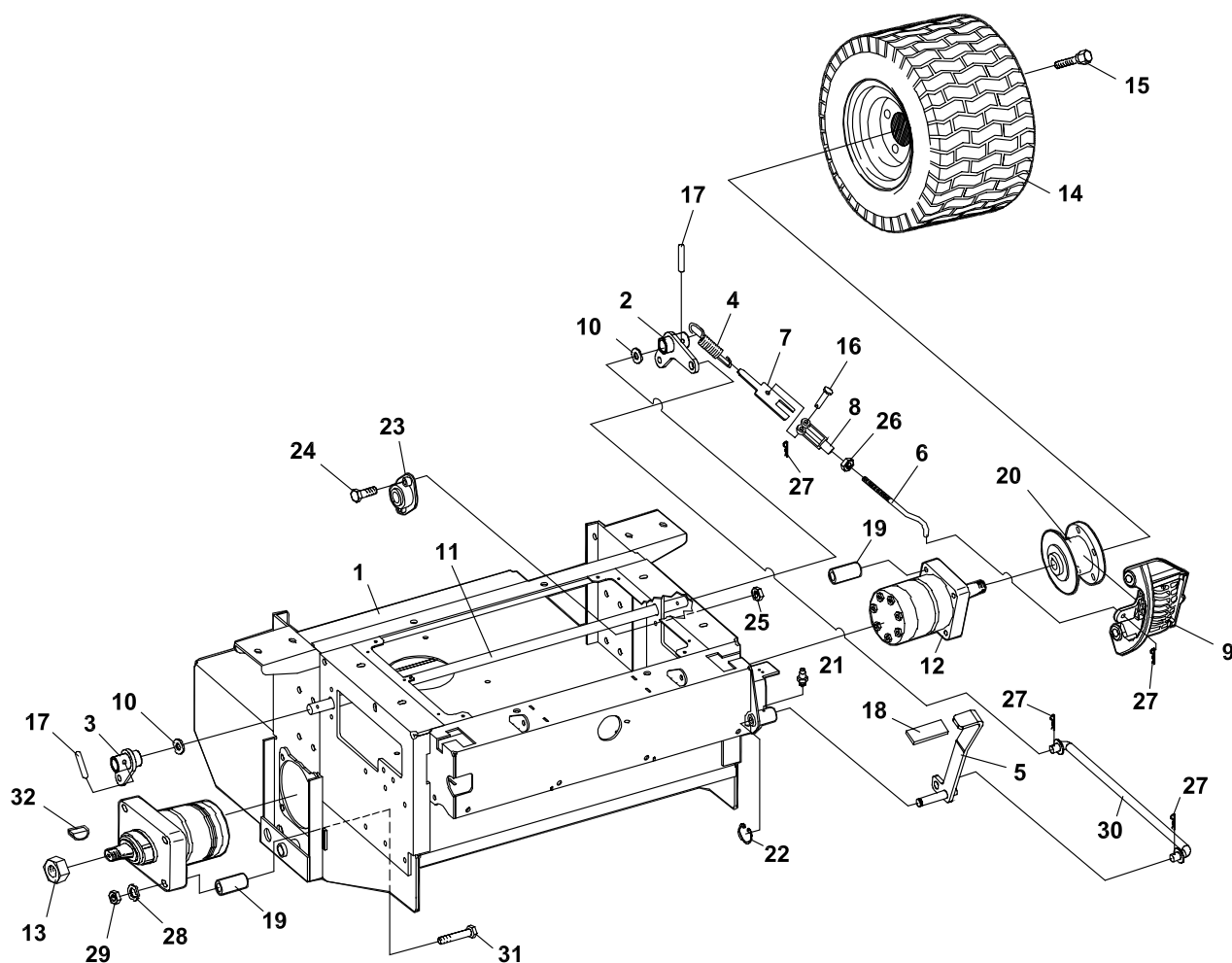
ITEM	PART NO.	DESCRIPTION	QTY	ITEM	PART NO.	DESCRIPTION	QTY
5-1	2188176	BELT-CUTTERDECK 52	1				
5-2	2188175	BELT-PTO 52	1				

# BRAKES/REAR WHEEL

218  
Estate  
Series



FIGURE 6



TORQUE TO  
225 FT/LBS



# 218 Estate Series

2722097-06

## BRAKES/REAR WHEEL

FIGURE 6

ITEM	PART NO.	DESCRIPTION	QTY	ITEM	PART NO.	DESCRIPTION	QTY
6-1	2720996	S ENGINE DECK WLABS	1	6-24	64123-15	BLT-HEX 3/8-16X3/4	4
6-2	4113527.7	WLDMT-BRAKE ARM LH	1	6-25	64141-4	NUT-WLF 3/8-16	4
6-3	4113529.7	WLDMT-BRAKE ARM RH	1	6-26	64025-03	NUT-HEX 5/16-24	2
6-4	128102	SPRING-EXTENSION	2	6-27	64168-2	HAIRPIN COTTER	6
6-5	4113518.7	WLDMT-BRAKE LEVER	1	6-28	64006-05	LCKWHSR-HELICAL 1/2	8
6-6	33213	ROD-SPD CTRL LH UPPER	2	6-29	64207-07	NUT-HEX M12-1.75	8
6-7	2182387.7	GUIDE-SPRING	2	6-30	4113530	WLDMT-PARK BRAKE ROD	1
6-8	38020N	CLEVIS-YOKE PLATE	2	6-31	450767	CAPSCREW 12-1.75X110	8
6-9	2188147	ASSY BRAKE CW (LH)	1	6-32	64164-08	S-KEY / WHEEL MOTOR	2
	* 2188148	ASSY BRAKE CCW (RH)	1				
6-10	64163-06	WSHR-.768-.756 IDX14 GA A/R					
6-11	2183056	SHAFT-BRAKE	1				
6-12	2188126-01	MOTOR-ASSY HYDRAULIC (INCLUDES ITEMS 35 & 36)	2				
6-13	64025-31	NUT1-20 UNSLOTTED TRW	2				
6-14	2720608-01	RIM ASSY W/VALVE STEM	2				
	2720608-02	TIRE-23 X 8.50-12	2				
6-15	64220-02	BOLT-WHEEL 7/16-20	10				
6-16	64188-02	PIN-CLEVIS 5/16X1	2				
6-17	64061-25	ROLL-PIN 1/4X1 1/4	2				
6-18	2188155	GRIP, 1/4X1X4 1/2	1				
6-19	2183063-01	SPACER, 32MM LONG	8				
6-20	2188149	HUB-WHL & DISC	2				
6-21	85010N	STRAIGHT ZERK FITTING	1				
6-22	64144-34	SNAP RING .50	1				
6-23	2188145	BRG-.75ID BRNZ SLF ALIGN	2				

SERVICE PARTS FOR 2188147 AND 2188148			
BRAKE ASSEMBLIES			QTY/ASSY
2188147-01	BRACKET-MACHINED		1
2188147-02	PAD-CAM SIDE		1
2188147-03	PAD-SUPPORT		1
2188147-04	SPRING-LEVER RETAINER		1
2188147-05	HOUSING		1
2188147-06	CAM LH		1
2188147-07	PIVOT PIN		1
2188147-08	PAD-CARRIER SIDE		1
2188147-09	PAD-SUPPORT		1
2188148-01	*CAM RH		1

\* NOT ILLUSTRATED

### BRAKE ASSEMBLY BREAKDOWN

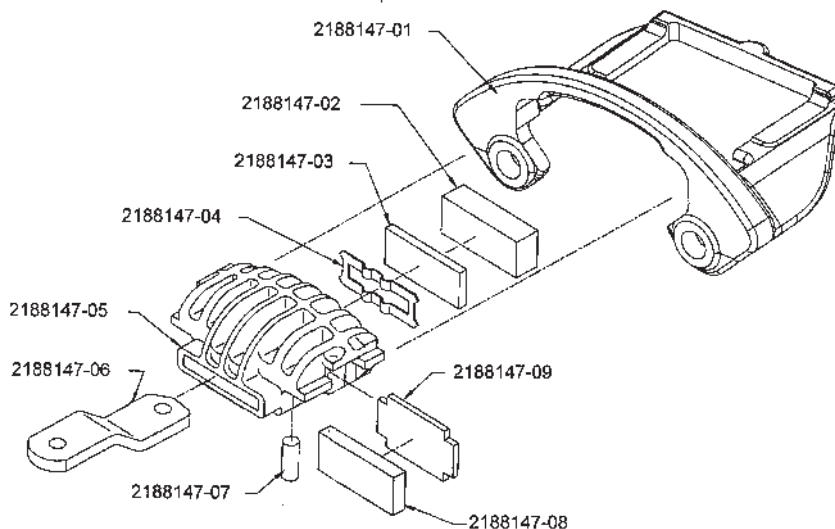
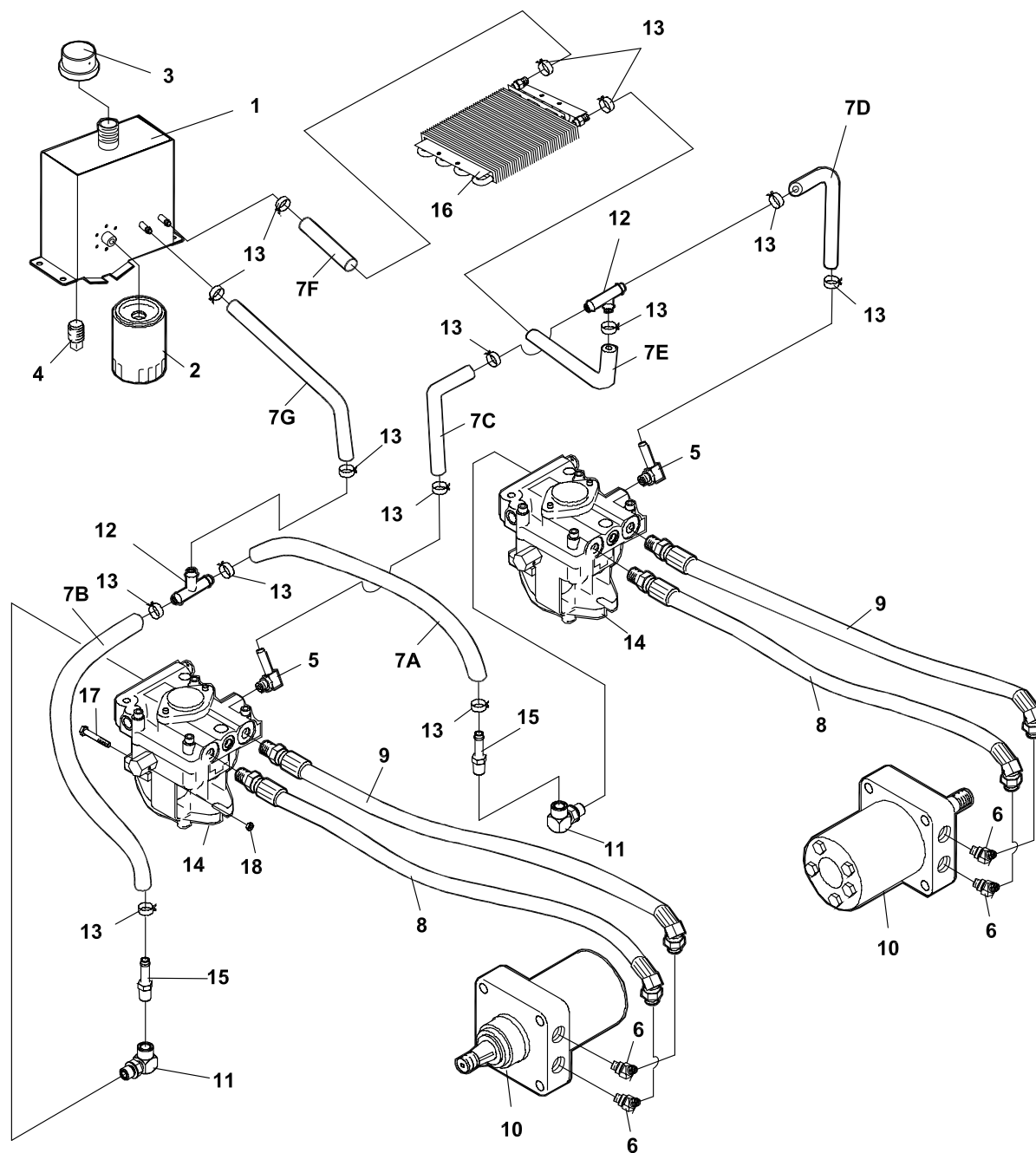




FIGURE 7





# 218 Estate Series

2722097-07

## HYDRAULICS

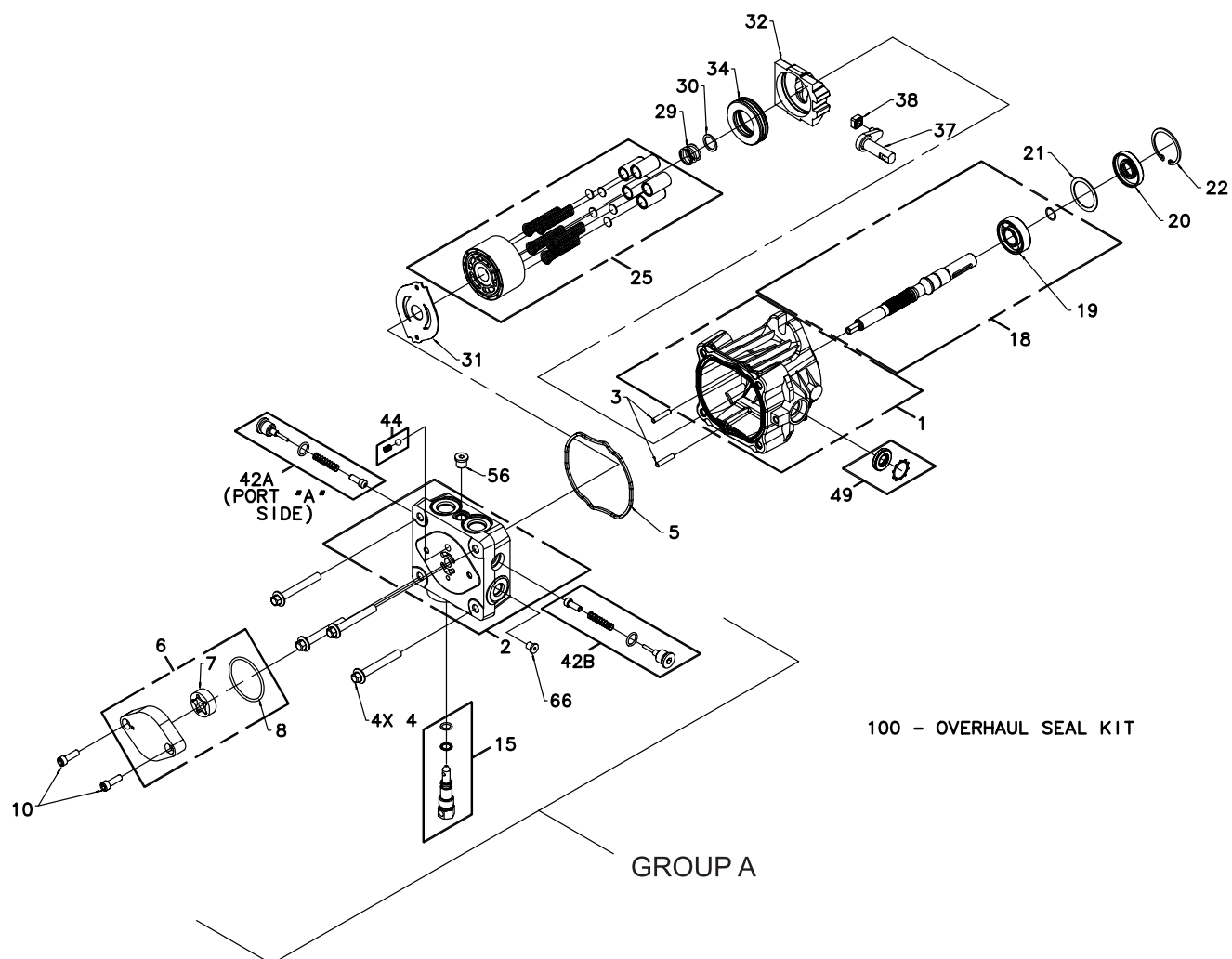
FIGURE 7

ITEM	PART NO.	DESCRIPTION	QTY
7-1	2186211	S HYD RESERVOIR W/LAB	1
7-2	2720396	FILTER 25 MICRON	1
7-3	69216.7	CAP-RESERVOIR	1
7-4	108029	PLUG-MAGNETIC	1
7-5	158058-04	FTG-90 BRB 9/16-18X.38	2
7-6	108205-03	ELBOW-MALE 45 37-ORB	4
(69053-05 IS A SERVICEABLE LENGTH OF 55")			
7-7A	69053-05	3/8 HIGH TEMP HSE 18"	1
7-7B	69053-05	3/8 HIGH TEMP HSE 15"	1
7-7C	69053-05	3/8 HIGH TEMP HSE 19"	1
7-7D	69053-05	3/8 HIGH TEMP HSE 12"	1
7-7E	69053-05	3/8 HIGH TEMP HSE 22"	1
7-7F	69053-05	3/8 HIGH TEMP HSE 26"	1
7-7G	69053-05	3/8 HIGH TEMP HSE 5"	1
7-8	2188157-01	HOSE HYD ORB 37-22.38	2
7-9	2188157-02	HOSE HYD ORB 37-25.00	2
7-10	2188126-01	MOTOR-ASSY HYD	2
7-11	2722453-01	FITTING-90 06 M ORB/04	2
7-12	58026-01	3 WAY CONNECTOR 3/8	2
7-13	88042-04	CLAMP-HOSE 5/8	14
7-14	2721615	PUMP-HYDRO	2
7-15	48386-04	FITTING-3/8 BARB 1/4	2
7-16	2188173	OIL COOLER	1
7-17	64123-60	BOLT, 1/4-20X2 HEX	2
7-18	64229-01	LOCKNUT-NYL 1/4-20	2

ITEM	PART NO.	DESCRIPTION	QTY
SAE PORT 'O' RING			
	PART NUMBER	THREAD SIZE	AS-568#
	158061-10	9/16-18	-906
	158061-11	3/4-16	-908
	158061-12	7/8-14	-910
	158061-13	1-1/16-12	-912
	158061-14	1-5/16-12	-916
	158061-16	1-5/8-12	-920
	158061-03	1-7/8-12	-924



FIGURE 8





## ZT 200 Series

2722087-08

## HYDROGEAR PUMP

FIGURE 8

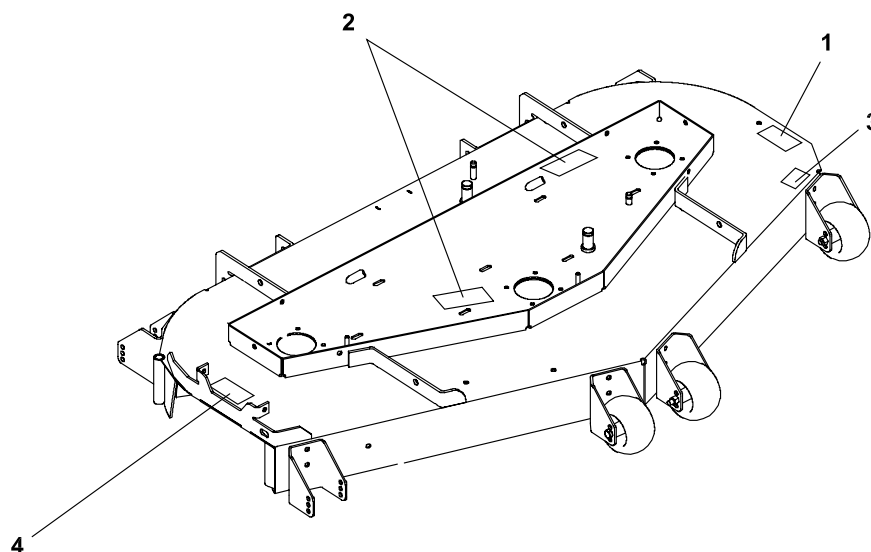
**2721615 PUMP-HYDRO RH ILLUSTRATED AS SHOWN EXCEPT "GROUP A" IS ROTATED 180°  
AROUND THE CENTERLINE OF THE PUMP.**

ITEM	HYDROGEAR PART NO.	TEXTRON PART NO.	DESCRIPTION	QTY
8-1	70516	----	HOUSING KIT	1
8-2	70517	----	END CAP KIT	1
8-3	50641	----	STRAIGHT HEADLESS PIN	2
8-4	50969	2721615-01	FLANGE BOLT M8-1.25 X 60	4
8-5	51232	2721615-02	HOUSING O-RING	1
8-6	2513027	38345-06	CHARGE PUMP KIT	1
8-7	50273	38345-07	STD GEROTOR ASSEMBLY	1
8-8	9004101-1340	38345-08	O-RING	1
8-10	50095	38345-10	SOCKET SCREW M6-1.0 x 20	2
8-15	2513030	----	BYPASS VALVE KIT (BLANK)	1
8-18	70521	2721615-07	PUMP SHAFT KIT	1
8-19	50315	----	BALL BEARING 17 X 40 X 12	1
8-20	51161	----	LIP SEAL 17 x 40 x 12	1
8-21	50951	----	SPACER	1
8-22	50329	----	RETAINING RING	1
8-25	70331	38345-12	CYLINDER BLOCK KIT	1
8-29	2003014	----	BLOCK SPRING	1
8-30	2003017	----	BLOCK THRUST WASHER	1
8-31	51246	2721615-09	VALVE PLATE	1
8-32	2003087	188059-11	SWASH PLATE	1
8-34	50551	2721615-11	BALL THRUST BEARING	1
8-37	2003005	188059-15	ARM-TRUNION	1
8-38	2000015	2721615-13	SLOT GUIDE	1
8-42A	2510027	2721615-14	CHECK VALVE KIT (.031")	1
8-42B	2510050	2721615-15	CHECK VALVE KIT (BLANK)	1
8-44	70403	2721615-16	CHARGE RELIEF VALVE KIT	1
8-49	2513043	2721615-17	TRUNNION SEAL/RETAINER KIT	1
8-56	9005110-4400	----	STRAIGHT THREAD PLUG	1
8-66	9005110-3100	----	5/16 SAE PLUG	1
8-100	70525	2721615-18	OVERHAUL SEAL KIT	1





FIGURE 9





# 218 Estate Series

2722087-21

## DECALS-CUTTERDECKS

FIGURE 9

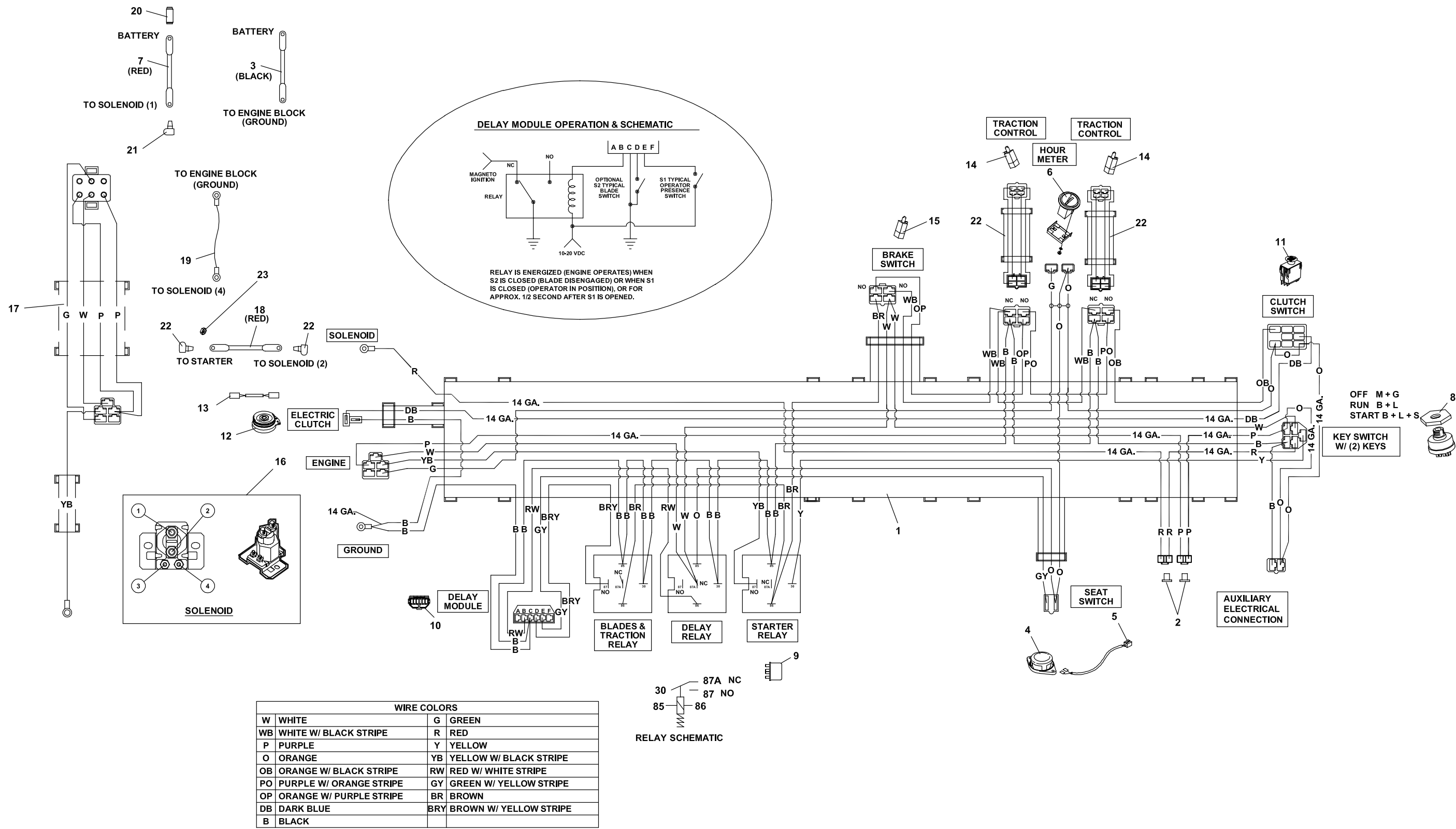
ITEM	PART NO.	DESCRIPTION	QTY	ITEM	PART NO.	DESCRIPTION	QTY
9-1	2000572	LABEL-WARNING BLADES	1				
9-2	2000577	LABEL, WARNING	2				
9-3	2000696	LBL - BLADE INSTALL	1				
9-4	2000677	LABEL-DANGER/WARNING	1				

WIRING HARNESS

FIGURE 10

2722097-10

218  
Estate  
Series





# 218 Estate Series

2722097-10

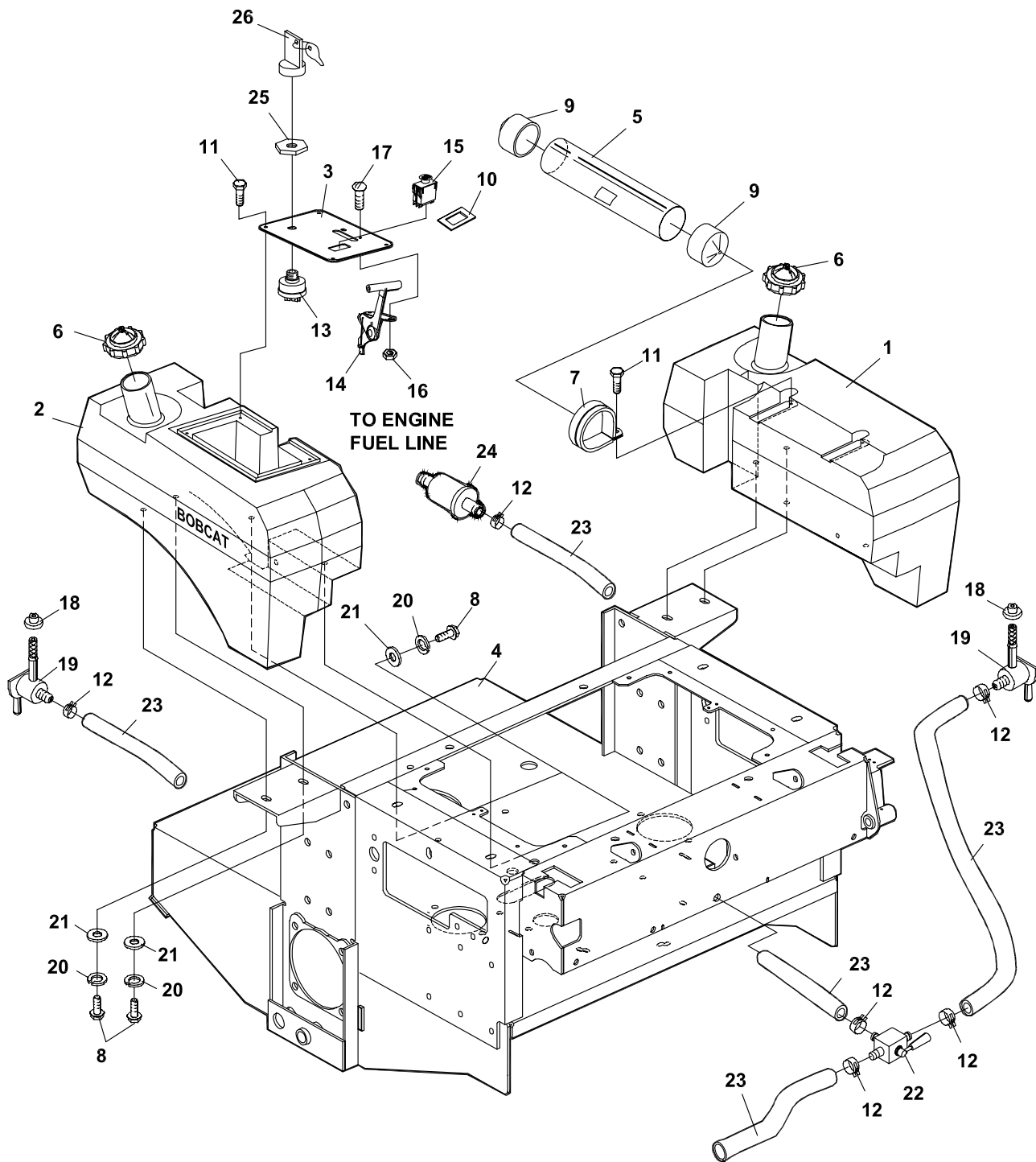
## WIRING HARNESS

FIGURE 10

ITEM	PART NO.	DESCRIPTION	QTY	ITEM	PART NO.	DESCRIPTION	QTY
10-1	2721375	HARNESS-WIRING	1				
10-2	148082-20	FUSE-20 AMP	2				
10-3	108061-13	CABLE-BATTERY	1				
10-4	158135-01	SWITCH-SEAT NO	1				
10-5	158136	WIRE-SEAT SWITCH	1				
10-6	48030N	HOUR METER ASSY	1				
10-7	2722227-01	CABLE-BATT W/CONDUIT (INCLUDES ITEMS 20 & 21)	1				
10-8	128010	KEY-SWITCH	1				
10-9	2722325	RELAY	3				
10-10	2188154	MODULE-DELAY	1				
10-11	2188153	SWITCH-CLUTCH	1				
10-12	2722016	CLUTCH-ELECTRIC 19HP (INCLUDES 2720949 WIRE ASSY)	1				
10-13	2720949	ASSY-CLUTCH WIRE	1				
10-14	108208	SWITCH-DBL POLE	2				
10-15	2188156	SWITCH-NONO DBL POLE	1				
10-16	38665	SOLENOID	1				
10-17	2722013	HARNESS-JUMPER	1				
10-18	108061-04	CABLE-SOL/STARTER	1				
10-19	2188225	WIRE-GROUND	1				
10-20	112386	BOOT-BAT TERM POS	1				
10-21	2308095	COVER-TERMINAL	3				
10-22	2188172	HARNESS-JUMPER	2				
10-23	64141-2	NUT-WLF 1/4-20	1				



FIGURE 11





# 218 Estate Series

2722097-11

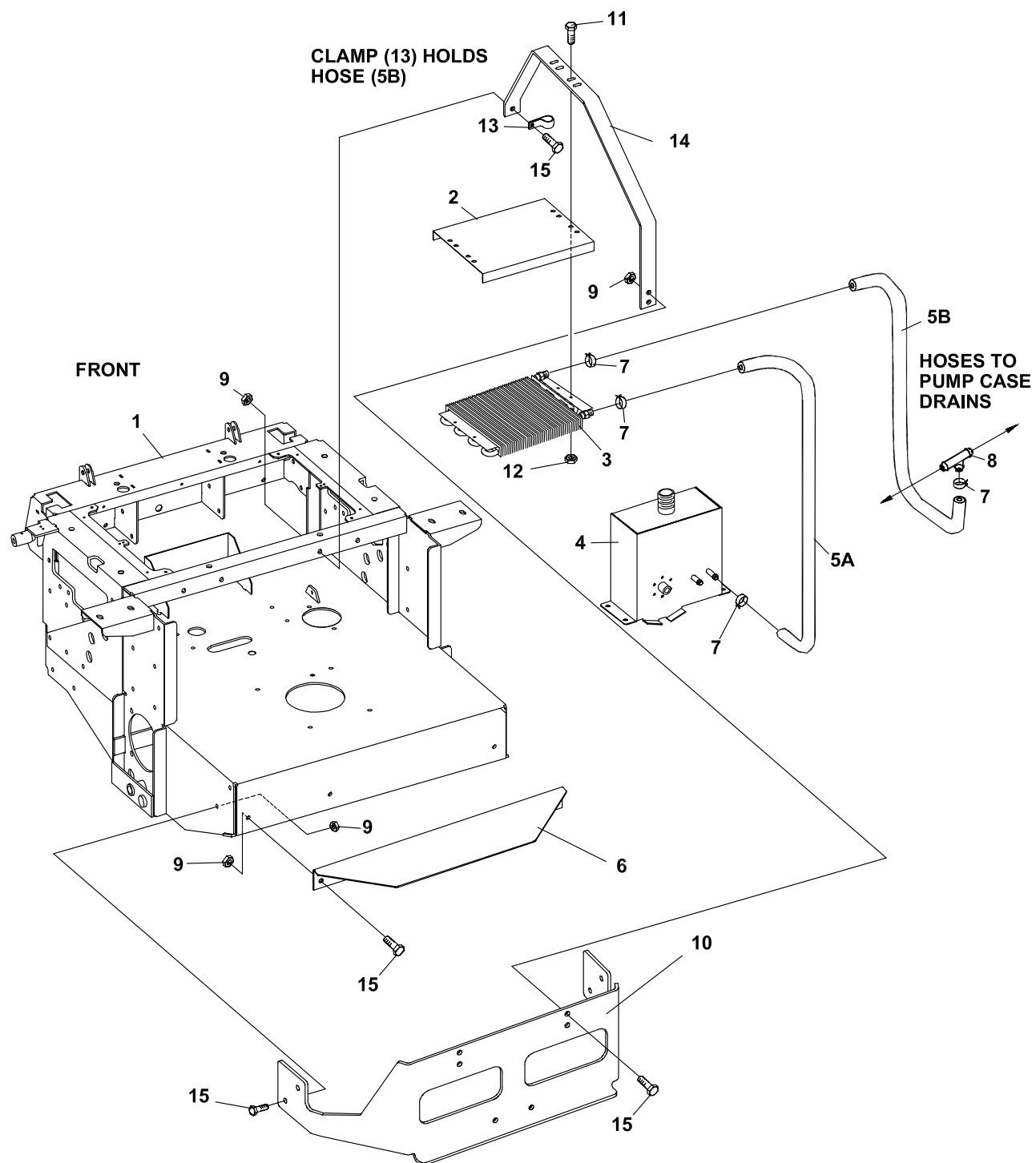
## FUEL TANKS/CONTROL PANEL

FIGURE 11

ITEM	PART NO.	DESCRIPTION	QTY	ITEM	PART NO.	DESCRIPTION	QTY
11-1	2721489	TANK-FUEL LH (INCLUDES ITEMS 18 & 19)	1				
11-2	2721490	TANK-FUEL RH (INCLUDES ITEMS 18 & 19)	1				
11-3	2186214	S CONTROL PANEL W/LAB	1				
11-4	2720996	S ENG DECK W/LABS	1				
11-5	2306144	S DOC TUBE W/LABS	1				
11-6	2721520	CAP-FUEL TANK	2				
11-7	38542	CLAMP-DOC TUBE	2				
11-8	64205-007	BLT-MET M10-1.5X20	8				
11-9	38061A	SPINDLE-SHIELD	2				
11-10	2188178	SWITCH-RETAINER	1				
11-11	64263-001	BLT-FLG HD M6-1.0 X 12	6				
11-12	88042N	HOSE CALMP	6				
11-13	128010	KEY-SWITCH (INCLUDES ITEMS 25 & 26)	1				
11-14	118020-14	CONTROL THROTTLE	1				
11-15	2188153	SWITCH-CLUTCH	1				
11-16	64025-15	NUT-HEX #10-24 KEPS	2				
11-17	64152-46	SCR.-SLT HH #10-24X1/2	2				
11-18	48310	S BUSHING, FUEL TANK	2				
11-19	38540	S FUEL SHUTOFF VALVE	2				
11-20	800488	LOCKWASHER M10	8				
11-21	64251-004	WASHER-M10	8				
11-22	2188161	VALVE-TANK SELECTOR	1				
11-23	48016-17	HOSE 1/4IDX1/2ODX68	2				
11-24	38666	FUEL FILTER	2				
11-25	128010-01	S-KEY SWITCH NYLON NUT	1				
11-26	128010-03	S-COVERED KEY	1				



FIGURE 12







# 218 Estate Series

2722097-12

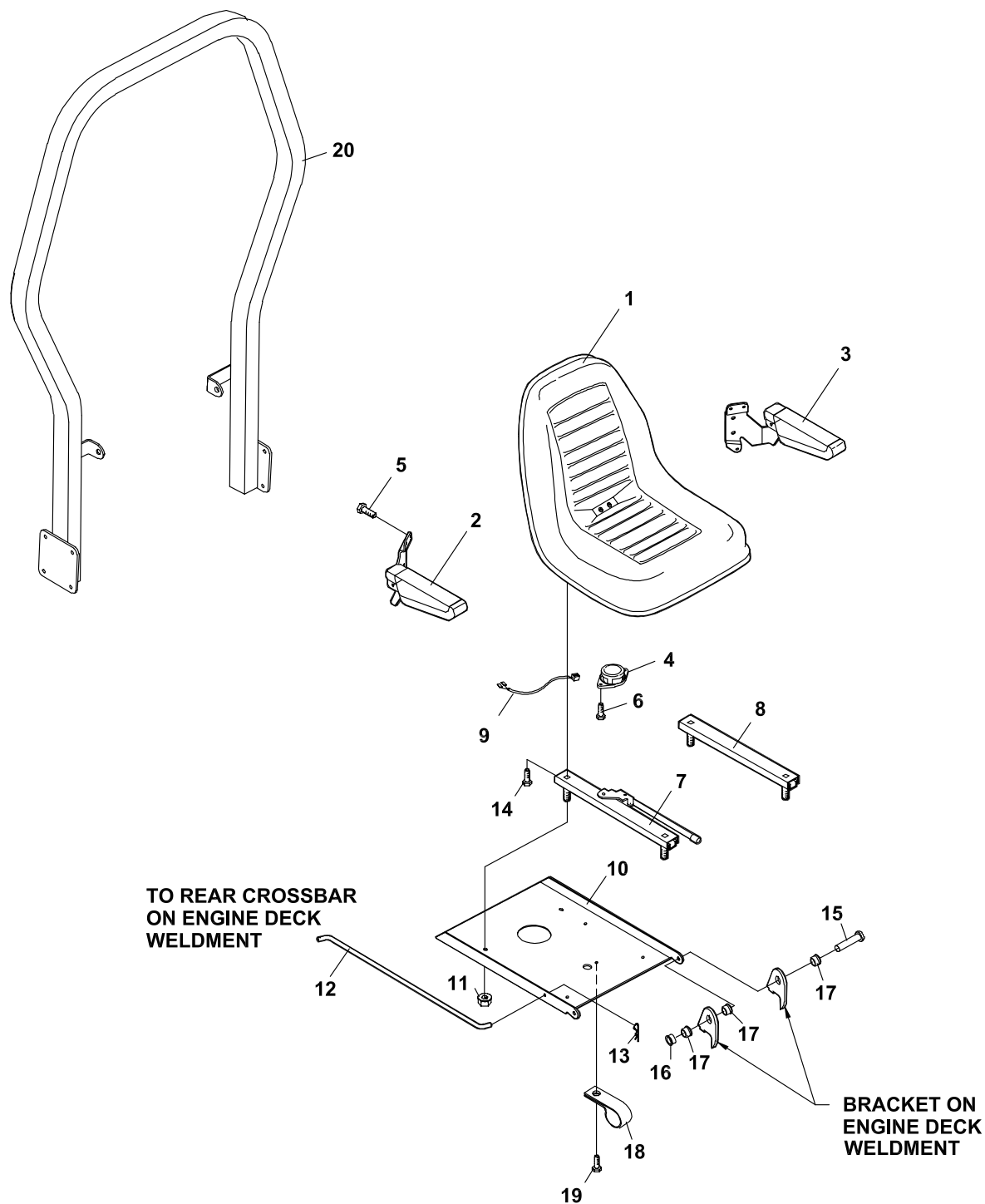
## OIL COOLER/BUMPER

FIGURE 12

ITEM	PART NO.	DESCRIPTION	QTY	ITEM	PART NO.	DESCRIPTION	QTY
12-1	2720996	S ENGINE DECK W/LABS	1				
12-2	2720891.7	SCREEN-OIL COOLER	1				
12-3	2188173	COOLER-OIL	1				
12-4	2186211	S HYD RSRVR W/LABS	1				
(69053-05 IS A SERVICEABLE LENGTH OF 55")							
12-5A	69053-05	3/8 HIGH TEMP HOSE 26"	1				
12-5B	69053-05	3/8 HIGH TEMP HOSE 22"	1				
12-6	2722467.7	ANGLE-HEAT SHIELD	1				
12-7	88042-04	CLAMP-HOSE 5/8	4				
12-8	58026-01	3 WAY CONNECTOR 3/8	1				
12-9	64265-05	NUT-FL NYL LOCK M10-1.5	12				
12-10	2721934.7	BUMPER-REAR	1				
12-11	64263-002	BLT-FLG HD M6-1.0 X 16	4				
12-12	64237-02	LOCKNUT-NYLON M6-1.00	4				
12-13	48228-2A	CABLE-CLIP 3/4 W/INSTN	2				
12-14	2722170.7	BRKT-COOLER SUPPORT	2				
12-15	64263-012	BLT-FLG HD M10-1.5 X 25	12				



FIGURE 13





# 218 Estate Series

2722097-13

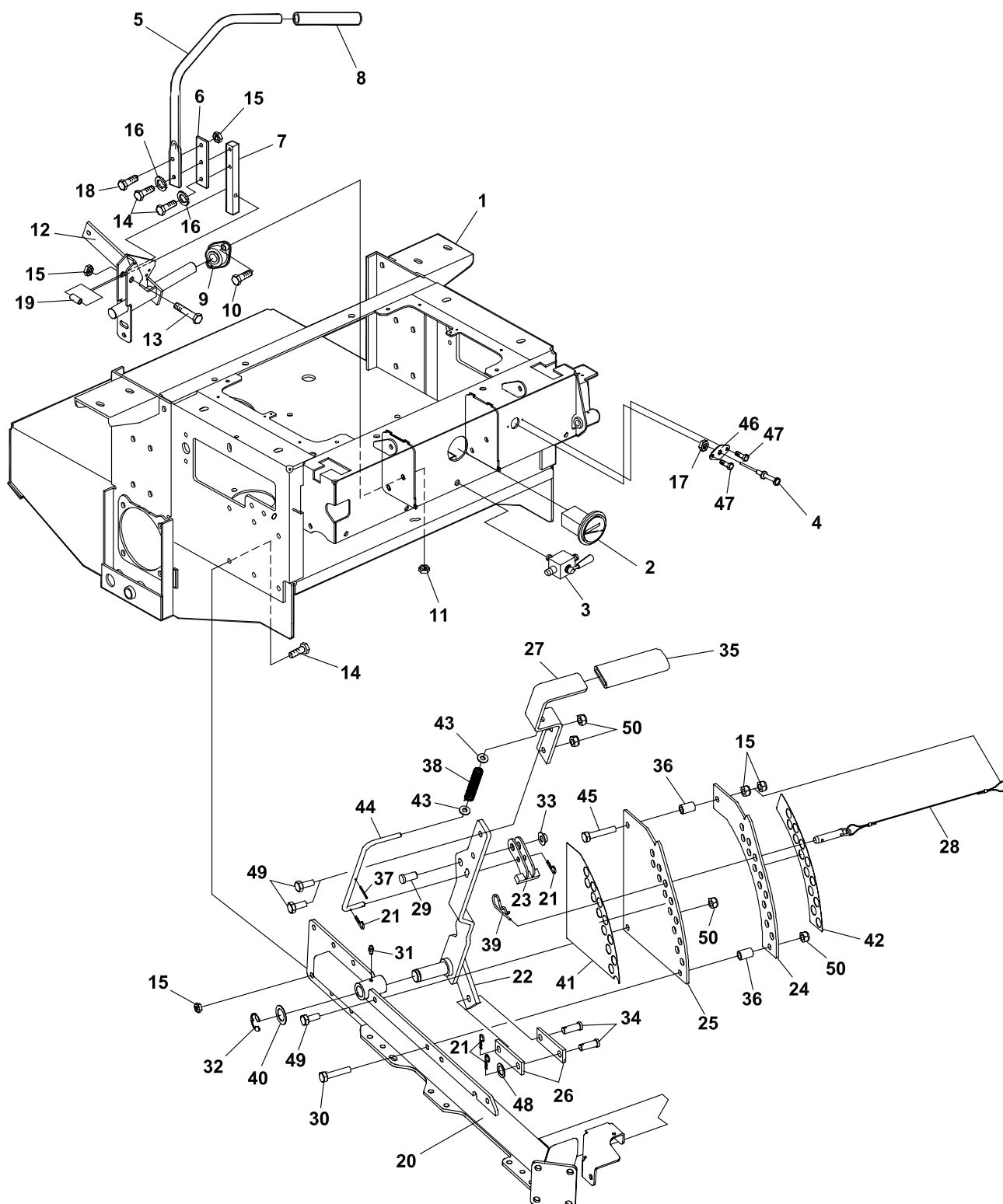
## SEAT ASSEMBLY & ROPS

FIGURE 13

ITEM	PART NO.	DESCRIPTION	QTY	ITEM	PART NO.	DESCRIPTION	QTY
13-1	198057	SEAT - 1 PIECE GREY					
		<b>OPTIONAL ARM RESTS:</b>					
13-2	198066	RH ARM REST	1				
13-3	198059	LH ARM REST	1				
13-4	158135-01	SWITCH, SEAT NO	1				
13-5	64139-16	BLT-WLF 5/16-18X5/8	6				
13-6	64139-02	BLT-WLF 1/4-20X1/2	2				
13-7	198063	SLIDE RAIL - ADJ	1				
13-8	198062	SLIDE RAIL - SLAVE	1				
13-9	158136	WIRE-SEAT SWITCH	1				
13-10	2182391	PLATE-SEAT	1				
13-11	64141-6	NUT-WLF 5/16-18	4				
13-12	2183069	ROD-PROP	1				
13-13	64168-2	COTTER-HAIRPIN.08X1.19	1				
13-14	2198096	SCREW-CAP WSHR HD	4				
13-15	64188-38	PIN-CLEVIS 3/8X1W/O HOLE	2				
13-16	64175-04	PUSHNUT 3/8 DIA	2				
13-17	38371-01	BRG-NYLINER 3/8	2				
13-18	48228A	CABLE CLIP-INSULATED	1				
13-19	64152-23	SCREW 1/4-20X3/8	1				
		<b>OPTIONAL ROPS:</b>					
13-20	970162	ATT-ROPS					



FIGURE 14





# 218 Estate Series

2722097-14

## STEERING/DECK LIFT

FIGURE 14

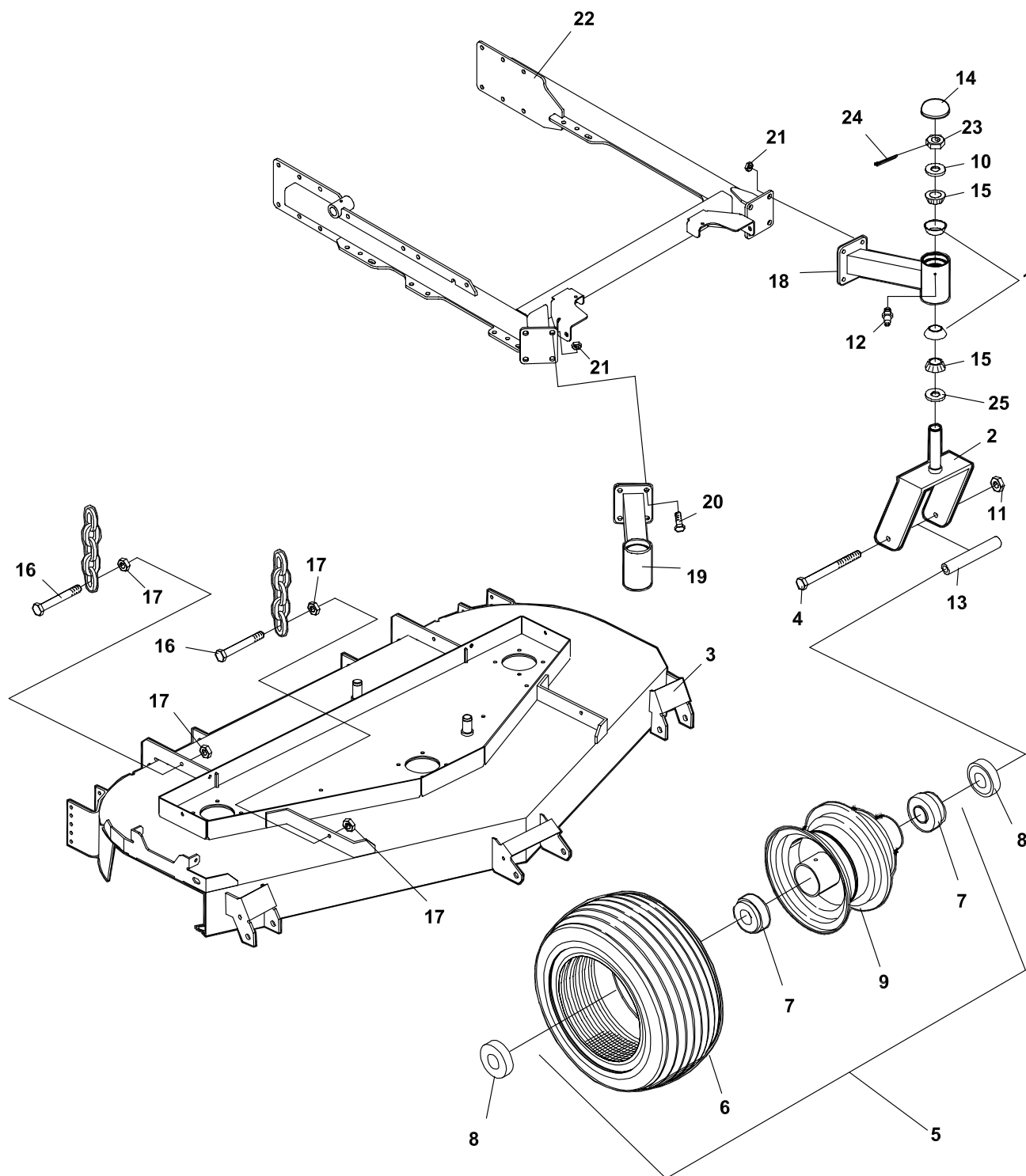
ITEM	PART NO.	DESCRIPTION	QTY	ITEM	PART NO.	DESCRIPTION	QTY
14-1	2720996	S ENGINE DECK W/LABS	1	14-48	64163-43	WSHR.443/.454X1X11GA	1
14-2	48030N	HOUR METER ASSY	1	14-49	64263-013	BLT-FLG HD M10-1.5 X 30	3
14-3	2188161	VALVE-TANK SELECTOR	1	14-50	64265-05	NUT-FL NYL LOCK M10-1.5	4
14-4	108009-05	CONTROL-CHOKE 55	1				
14-5	2182344.7	LEVER-CONTROL	2				
14-6	2182434.7	BRKT-TRACTION LEVER	2				
14-7	2183074	BRACKET-HANDLE	2				
14-8	2188144	GRIP-.75 IDX12	2				
14-9	2188145	BEARING-SELF ALIGNED	4				
14-10	64123-15	BLT-HEX 3/8-16X3/4	8				
14-11	64141-4	NUT-WLF 3/8-16	8				
14-12	4112105.7	WLDMT-MTN CNTRL RH	1				
	* 4112104.7	WLDMT-MTN CNTRL LH	1				
14-13	64205-011	BLT-MET M10-1.5X40	2				
14-14	A110406	BLT-MET M10-1.5X30	16				
14-15	64237-03	LOCKNUT-NYLON M10-1.5	18				
14-16	800488	LOCKWASHER-M10	4				
14-17	64025-04	NUT-HEX 3/8-24	1				
14-18	A1104057	BLT-MET M10-1.5X25	2				
14-19	2183073	SPACER	2				
14-20	2722723.2	WLDMT-CRADLE	1				
14-21	64168-2	HAIRPIN COTTER	4				
14-22	2720551.7	WLDMT-DECK LIFT LEVER	1				
14-23	2720511.7	WLDMT-LVR STOP LATCH	1				
14-24	2720517.7	BRKT-INNER DECK LIFT	1				
14-25	2720516.7	BRKT-OUTER DECK LIFT	1				
14-26	4116590.7	BRACKET-LIFT LINK	2				
14-27	2720501.7	HANDLE-LIFT ARM	1				
14-28	2188141	ASSY, PIN & LANYARD	1				
14-29	64188-53	PIN-CLEVIS 1/2X1.0	1				
14-30	64205-052	BLT-MET M10-1.5X50	1				
14-31	85010N	ZERK, 1/4-28 STR SLF TH	1				
14-32	64221-04	E-RING .875	1				
14-33	64175-05	NUT-PUSH 5/16	1				
14-34	64188-36	PIN, CLEVIS 7/16X1-1/4	2				
14-35	2188143	GRIP	1				
14-36	2183071-03	SPACER	2				
14-37	64061-37	ROLL PIN-1/8X1.00 SS	1				
14-38	2720544	SPRING-COMPRESSION	1				
14-39	64168-1	HAIRPIN COTTER	1				
14-40	64163-65	WSHR .890X1.375X18GA	3				
14-41	2720742	LBL-ZT200 HT CUT OUTER	1				
14-42	2720743	LBL-ZT200 HT CUT INNER	1				
14-43	64163-37	WSHR 1.12X.390X19 GA	2				
14-44	2720503	ROD-LIFT STOP	1				
14-45	64205-008	BLT-MET M10-1.50X55	1				
14-46	2222092	PLATE-CHOKE MOUNT	1				
14-47	64152-23	1/4-20X3/8 LG SP SCREW	2				

\* NOT ILLUSTRATED

# CRADLE & CASTER ASSEMBLY

FIGURE 15

218  
Estate  
Series





# 218 Estate Series

2722097-15

## CRADLE & CASTER ASSEMBLY

FIGURE 15

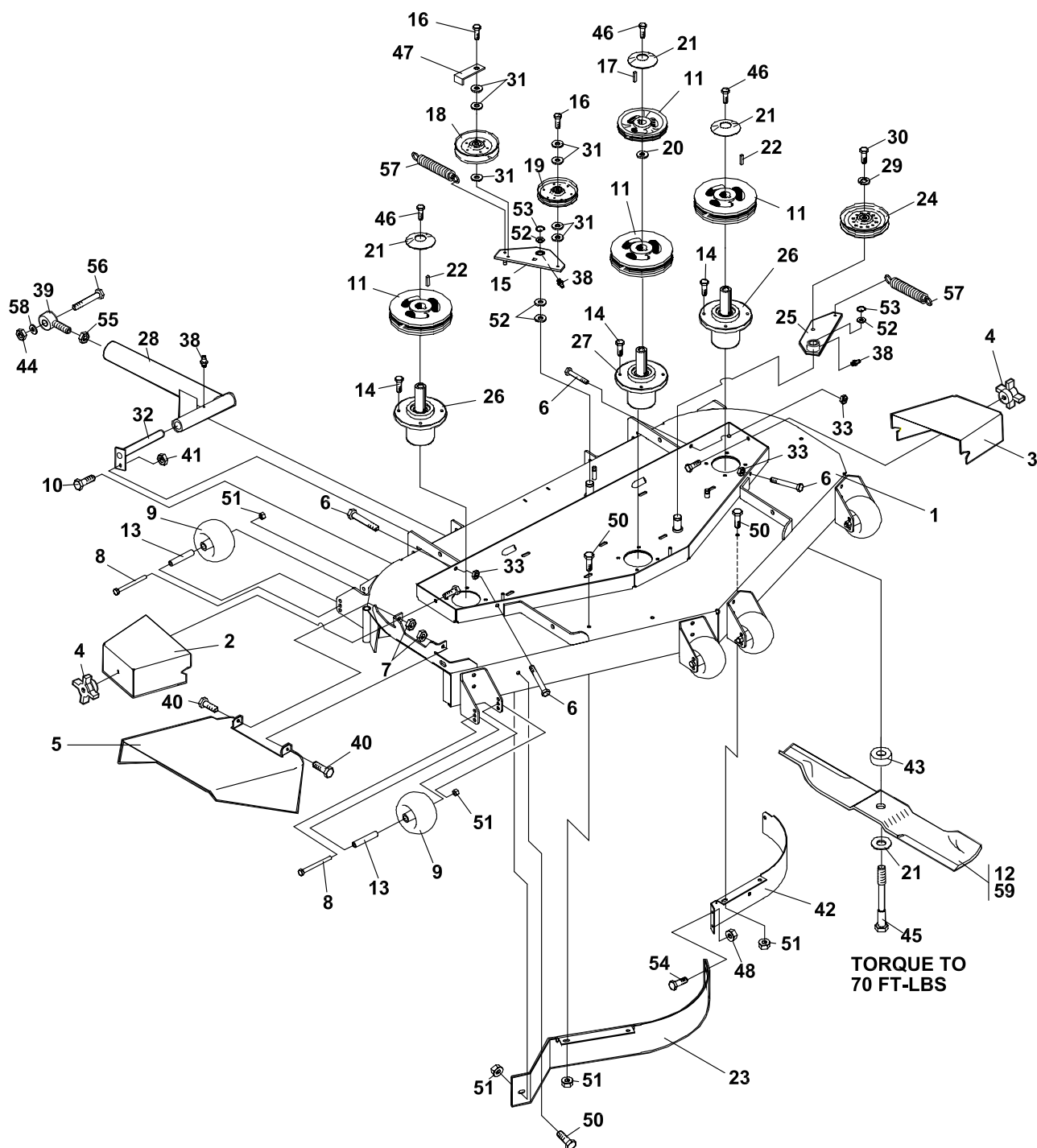
ITEM	PART NO.	DESCRIPTION	QTY	ITEM	PART NO.	DESCRIPTION	QTY
15-1	48043-03C	S CUP, OUTER BEARING	4				
15-2	2721306.2	WLDMT-CASTER YOKE	2				
15-3		DECK W/LABS					
15-4	64123-215	BOLT-HEX 3/4-10X7 1/2	2				
15-5	2722228	WHEEL-13X5.00-6 ASSY (INCLUDES ITEMS 6, 7 & 9)	2				
15-6	2720475-01	TIRE-13X5.00-6 SMOOTH	1				
15-7	2722228-03	BEARING	2				
15-8	2722231	SPACER-END	4				
15-9	2722228-01	RIM-13" ASSY W/VLV STEM	1				
15-10	64163-64	WSHR 1.015X14GA	2				
15-11	64229-07	LOCKNUT-NYLON 3/4-10	2				
15-12	85010N	ZERK, 1/4-28 STR SLF THD	9				
15-13	2722230-02	SPANNER-13" WHEEL	2				
15-14	2188135	DUST COVER	2				
15-15	48043-04C	S CONE, OUTER BEARING	4				
15-16	64205-029	BLT-MET M12X1.75X40	8				
15-17	64246-04	NUT-WHIZ M12-1.75	16				
15-18	2722399.2	WLDMT-CSTR ARM 52 LH	1				
15-19	2722398.2	WLDMT-CSTR ARM 52 RH	1				
15-20	A1105061	BOLT-M12-1.75X30	8				
15-21	64237-06	LOCKNUT-NYLON M12-1.75	8				
15-22	2722723.2	WLDMT-CRADLE	1				
15-23	64025-20	NUT-HEX 3/4-16 SLOT U	2				
15-24	64140-5	COTTER PIN-1/8 X 1-1/2	2				
15-25	48480	SEAL	2				



# 52" SIDE DISCHARGE

FIGURE 16

218  
Estate  
Series





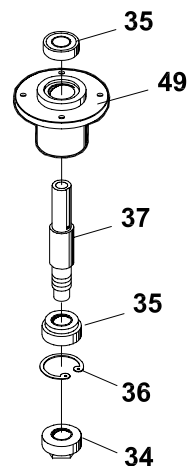
# 218 Estate Series

2722097-16

## 52" SIDE DISCHARGE

FIGURE 16

ITEM	PART NO.	DESCRIPTION	QTY	ITEM	PART NO.	DESCRIPTION	QTY
16-1	4113649	S-52 DECK W/LABS	1	16-42	4114038.7	BAFFLE-FRONT LH (USE ON 52" SD DECK ONLY)	1
16-2	2182458.2	BELT COVER RH	1				
16-3	2182459.2	BELT COVER LH	1	16-43	2188162	SPACER-BLADE	3
16-4	38524	KNOB-4 PRONG 3/8-16	2	16-44	64229-06	LOCKNUT-NYLON 5/8-11	2
16-5	32723.2	CHUTE-DISCHARGE MIDSZ	1	16-45	64123-209	BLT-HEX 5/8-18X3.5	3
16-6	64166-17	BLT-SHLDR 3/8-16X1.12	4	16-46	64123-208	BLT-HEX 5/8-11X1 1/2	3
16-7	64229-03	LOCKNUT NYLON 3/8-16	2	16-47	2302125.7	GUIDE-BELT	1
16-8	64205-004	BOLT-MET M10-1.5 X 110	6	16-48	64229-01	LOCKNUT-NYL 1/4-20	2
16-9	2721512	ROLLER-5 X 2.75 CENTER	6	16-49	2221000	HOUSING-SPINDLE 52"	3
16-10	64205-001	BLT-MET M8-1.25X20	2	16-50	64205-007	BLT MET M10-1.50X20	6
16-11	2308140	PULLEY-ENGINE	4	16-51	64237-03	LOCKNUT-NYLON M10	12
16-12	112111-02	BLADE 18.0 OFFST	3	16-52	64163-65	WSHR .890X1.375X18 GA	4
16-13	2720685	SPACER-ROLLER	6	16-53	64221-04	E-CLIP .875	2
16-14	64197-003	BLT-TDFM 3/8-16X1	12	16-54	64018-2	BLT-CRG 1/4-20X3/4	2
16-15	2186140.7	WLDMT-PTO IDLER	1	16-55	64001-1	NUT-JAM 5/8-18	2
16-16	64197-004	BOLT TR 3/8-16X1 3/4	2	16-56	64123-206	BLT-HEX 5/8-11X4.5	2
16-17	64164-13	1/4X1/4X2 SQ END KEY	1	16-57	2188131	SPRING-EXTENSION	2
16-18	48393	PULLEY, V IDLER	1	16-58	64163-73	WSHR-FLT .625IDX.062	A/R
16-19	38297	IDLER, 5.0 OD FLNGD	1	16-59	2722543-02	BLADE-18.00 ELIMINATOR (OPTIONAL)	3
16-20	64163-22	1-1/32X1-3/4X1/2 WASHR	1				
16-21	64209-03	SPRING WSHR .67 ID	6				
16-22	64164-12	1/4X1/4X1 SQ END KEY	2				
16-23	2182496.7	BAFFLE-FRONT RH (USE ON 52" SD DECK ONLY)	1				
16-24	128169	PULLEY, IDLER 5.50"	1				
16-25	2186164.7	WLDMT-DECK IDLER	1				
16-26	2720759	ASSY-TOP MNT SPNDLE 52"2 (INCLUDES ITEMS 34-37, 49)					
16-27	2720758	ASSY-TOP MNT SPNDLE 52"1 (INCLUDES ITEMS 34-37, 49)					
16-28	2186185.7	WLDMT-PUSHBAR	2				
16-29	64006-05	LCKWSHR HELICAL 1/2	1				
16-30	64123-05	BLT-HEX 1/2-20X1 1/2	1				
16-31	64163-46	WSHR .383/.393 X 7 GA	7				
16-32	2186125	WLDMT-LOCK PSHBR	2				
16-33	64141-4	NUT-WLF 3/8-16	4				
16-34	38315	NUT-SPINDLE	3				
16-35	38348-01	BEARING-SPINDLE	6				
16-36	64144-38	SNAP-RING	3				
16-37	2183070-01	SHAFT-SPINDLE LONG	1				
	2183070-02	SHAFT-SPINDLE	2				
16-38	85010N	STRAIGHT ZERK FTTG	6				
16-39	2188142-01	ROD, END 5/8	2				
16-40	64123-50	BLT-HEX 3/8-16X1	2				
16-41	64237-05	LOCKNUT-NYLON M8-1.25	2				



2720759-ASSY TOP MNT SPINDLE 52"  
2720758-ASSY TOP MNT SPINDLE 52"  
(INCLUDES ITEMS 34-37, 49)



## World Class Quality, Performance And Support

Equipment from Textron Golf, Turf & Specialty Products is built to exacting standards ensured by ISO 9001 registration at all our manufacturing locations.

A worldwide dealer network and factory-trained technicians backed by Textron Parts Xpress provide reliable, high-quality product support.



---

**BOB-CAT BUNTON CUSHMAN JACOBSEN RANSOMES RYAN**

1451 Marvin Griffin Rd, Augusta, GA 30906  
[www.textron.com](http://www.textron.com)