



# ***BUNTON***<sup>®</sup>

## **SETUP, PARTS & MAINTENANCE MANUAL BZT 2200D SERIES**

---

**MODELS: 642225 BZT 2200D W/52" SIDE DISCHARGE  
642226 BZT 2200D W/61" SIDE DISCHARGE**



*WARNING: If incorrectly used this machine can cause severe injury. Those who use and maintain this machine should be trained in its proper use, warned of its dangers and should read the entire manual before attempting to set up, operate, adjust or service the machine.*

**Operation & Safety Manual: 2721544**

**BUNTON**

**TEXTRON**

GOLF, TURF & SPECIALTY PRODUCTS

**2721545 REV02**

**CALIFORNIA**  
**Proposition 65 Warning**

Diesel engine exhaust and some of its constituents are known to the State of California to cause cancer, birth defects and other reproductive harm.



**WARNING**

The engine exhaust from this product contains chemicals known to the State of California to cause cancer, birth defects or other reproductive harm.

**Californie Proposition 65**  
**Avertissement**

Les échappements des moteurs diesel et certains de leurs composés sont reconnus par l'Etat de Californie pour être cancérigènes, provoquer des défauts congénitaux et d'autres dangers en matière de reproduction.



**AVERTISSEMENT**

L'émission du moteur de ce matériel contient des produits chimiques que l'Etat de Californie considère être cancérigènes, provoquer des défauts congénitaux et d'autres dangers en matière de reproduction.

**California Advertencia**  
**de la Proposicion 65**

El estado de California hace saber que los gases de escape de los motores diesel y algunos de sus componentes producen cáncer, defectos de nacimiento y otros daños en el proceso de reproducción humana.



**ADVERTENCIA**

El estado de California hace saber que los gases de escape de este producto contienen productos químicos que producen cáncer, defectos de nacimiento y otros daños en el proceso de reproducción humana.



# BZT 2200D Series

## IMPORTANT MESSAGE

Thank you for purchasing this Bunton product. You have purchased a world class mowing product, one of the best designed and built anywhere.

This machine comes with an Operation and Safety Manual and a separate Setup, Parts and Maintenance Manual. The useful life and good service you receive from this machine depends to a large extent on how well you read and understand these manuals. Treat your machine properly, lubricate and adjust it as instructed, and it will give you many years of reliable service.

Your safe use of this Bunton product is one of our prime design objectives. Many safety features are built in, but we also rely on your good sense and care to achieve accident-free operation. For best protection, study the manuals thoroughly. Learn the proper operation of all controls. Observe all safety precautions. Follow all instructions and warnings completely. Do not remove or defeat any safety features. Make sure those who operate this machine are as well informed and careful in its use as you are.

See a Bunton dealer for any service or parts needed. Bunton service ensures that you continue to receive the best results possible from Bunton's products. You can trust Bunton replacement parts because they are manufactured with the same high precision and quality as the original parts.

Bunton designs and builds its equipment to serve many years in a safe and productive manner. For longest life, use this machine only as directed in the manuals, keep it in good repair and follow safety warnings and instructions. You'll always be glad you did.

**Textron Golf, Turf & Specialty Products**  
**One Bob Cat Lane**  
**Johnson Creek, WI 53038-0469**

TABLE OF CONTENTS	FIGURES	PAGE
SAFETY .....		2
ASSEMBLY AND SETUP .....		3, 4
MAINTENANCE CHART .....		5
MAINTENANCE RECORD .....		6
MAINTENANCE .....		7-13
TROUBLESHOOTING .....		14, 15
ADJUSTMENTS .....		16-18
BELT REPLACEMENT .....		19, 20
SPECIFICATIONS .....		21-24
PARTS SECTION .....		25
UPPER ENGINE DECK ASSY .....	FIGURE 1 .....	26, 27
LOWER ENGINE DECK ASSY .....	FIGURE 2 .....	28, 29
CRADLE ASSEMBLY .....	FIGURE 3 .....	30, 31
DECALS .....	FIGURE 4 .....	32, 33
BUMPER .....	FIGURE 5 .....	34, 35
BRAKES/REAR WHEEL .....	FIGURE 6 .....	36, 37
HYDRAULICS .....	FIGURE 7 .....	38, 39
HYDROGEAR PUMP .....	FIGURE 8 .....	40, 41
YANMAR WIRE HARNESS .....	FIGURE 9 .....	42, 43
FUEL TANKS/CONTROL PANEL .....	FIGURE 10 .....	44, 45
RADIATOR SCREEN & AIR FILTER .....	FIGURE 11 .....	46, 47
OIL COOLER & RADIATOR .....	FIGURE 12 .....	48, 49
SEAT ASSEMBLY & ROPS .....	FIGURE 13 .....	50, 51
ELECTRIC DECK LIFT .....	FIGURE 14 .....	52, 53
STEERING/INSTRUMENTS .....	FIGURE 15 .....	54, 55
CRADLE & CASTER ASSEMBLY .....	FIGURE 16 .....	56, 57
52" & 61" SIDE DISCHARGE .....	FIGURE 17 .....	58, 59
BELTS .....	FIGURE 18 .....	60, 61
DECALS-CUTTERDECKS .....	FIGURE 19 .....	62, 63



## NOTICE !!!

Unauthorized modifications may present **extreme** safety hazards to operators and bystanders and could also result in product damage.

Textron Golf, Turf & Specialty Products strongly warns against, rejects and disclaims any modifications, add-on accessories or product alterations that are not designed, developed, tested and approved by Textron Golf, Turf & Specialty Products Engineering Department. Any Textron Golf, Turf & Specialty Products product that is altered, modified or changed in any manner not specifically authorized after original manufacture—including the addition of “after-market” accessories or component parts not specifically approved by Textron Golf, Turf & Specialty Products—will result in the Textron Golf, Turf & Specialty Products Warranty being voided.

Any and all liability for personal injury and/or property damage caused by any unauthorized modifications, add-on accessories or products not approved by Textron Golf, Turf & Specialty Products will be considered the responsibility of the individual(s) or company designing and/or making such changes. Textron Golf, Turf & Specialty Products will vigorously pursue full indemnification and costs from any party responsible for such unauthorized post-manufacture modifications and/or accessories should personal injury and/or property damage result.

## SPECIFIC TORQUES

BLADE BOLT TORQUE: 70 FT-LBS (95 Nm)  
WHEEL HUB NUTS: 175 FT-LBS (237 Nm)  
ENGINE CRANKSHAFT BOLT: 50 FT-LBS (68 Nm)  
ENGINE MOUNTING BOLTS: 30 FT-LBS (68 Nm)



This symbol means:  
**ATTENTION!**  
**BECOME ALERT!**

Your safety and the safety of others is involved.

## Signal word definitions:

The signal words below are used to identify levels of hazard seriousness. These words appear in this manual and on the safety labels attached to Bunton machines. For your safety and the safety of others, read and follow the information given with these signal words and/or the symbol shown above.

### **DANGER**

**DANGER** indicates an imminently hazardous situation which, if not avoided, **WILL** result in death or serious injury.

### **WARNING**

**WARNING** indicates a potentially hazardous situation which, if not avoided, **COULD** result in death or serious injury.

### **CAUTION**

**CAUTION** indicates a potentially hazardous situation which, if not avoided, **MAY** result in minor or moderate injury. It may also be used to alert against unsafe practices or property damage.

### **CAUTION**

**CAUTION** used without the safety alert symbol indicates a potentially hazardous situation which, if not avoided, **MAY** result in property damage



**MODEL NUMBER:** This number appears on sales literature, technical manuals and price lists.

**SERIAL NUMBER:** This number appears only on your mower. It contains the model number followed consecutively by the serial number. Use this number when ordering parts or seeking warranty information.





## BZT 2200D Series

## ASSEMBLY AND SETUP

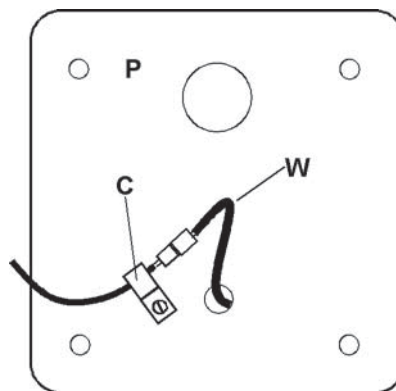
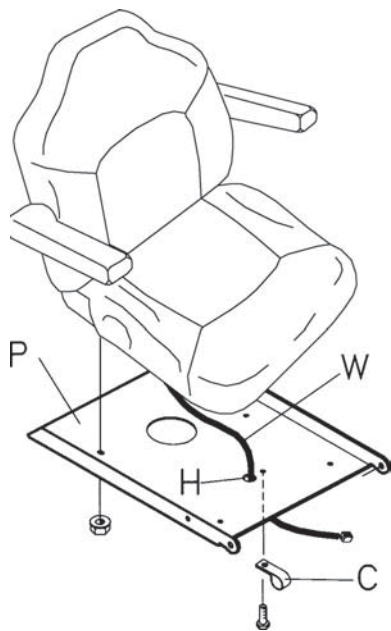
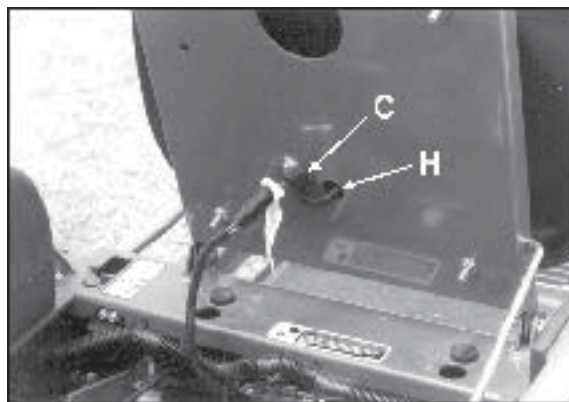
### TOOLS REQUIRED FOR ASSEMBLY

- Wrecking bar
- Claw hammer
- Ratchets: 3/8"
- Sockets: 3/8", 1/2", 17 mm, 19 mm
- Wrenches: two 15/16" (or adjustable), 13 mm, 17 mm, 19 mm
- Level
- Straight edge
- Tire pressure gauge

**NOTE:** All references below to the "right" or "left" are with respect to an operator at the controls.

### 1. INSTALL SEAT

- Position seat over seat plate and route seat wire **W** through hole **H** in seat plate. Drop seat mounting studs through seat plate holes. Secure studs with four 5/16-18 whiz nuts and tighten securely.
- Leave enough seat wire between the seat and seat plate to allow full fore and aft travel of the seat. Secure seat wire on the bottom of the seat plate with clip **C** and a 1/4-20x3/8 thread forming screw.
- Connect the tractor harness to the seat wire.



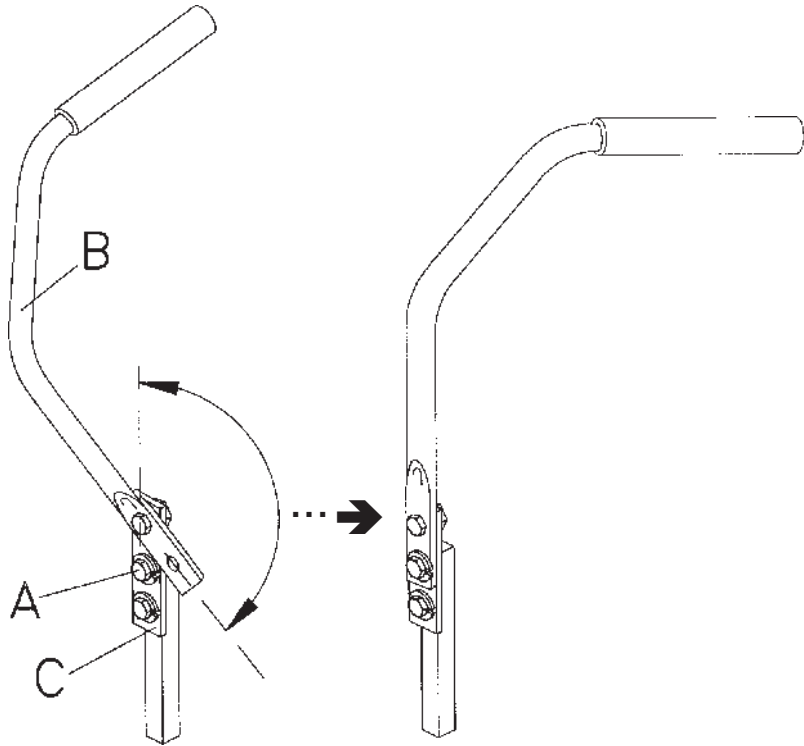
Bottom of seat plate **P** showing clip **C**



2. Set tire pressures to 14 lbs/in<sup>2</sup> (1.0 kg/cm<sup>2</sup>). Tires are overinflated for shipping.

### 3. TRACTION LEVERS

- a) Remove bolt **A**.
- b) Rotate traction lever **B** into position and secure with bolt **A**. Repeat for the other lever.
- c) Tighten all fasteners.
- d) Sit on the machine. If the levers are too long, bracket **C** may be removed to make them shorter.



### 4. FINAL PREPARATIONS

- Check the engine and hydraulic oil levels. Top up with the correct oil if necessary. See engine manufacturers manual for recommended grade of oil. Use fresh, clean 15W40 or 20W50 motor oil or 15W50 synthetic motor oil for the hydraulic system.
- Remove the battery from the machine and trickle charge for several hours. Replace the battery in the machine and make the connections, red to positive first, then black (ground) to negative.
- Read Operation and Safety Manual before starting.
- If fuel tanks have been completely emptied, refer to the bleeding the fuel system on Page 11 of this manual.
- Run engine at full RPM for 5 minutes before engaging blades to allow the engine to be fully lubricated before load is applied.
- Check the hydrostat neutral adjustment. Neutral is set at the factory but may require readjustment if air trapped during the initial oil fill has worked out of the system. See adjustments section later in this manual.
- Do not use the machine without an approved grass collector, the grass discharge chute or mulching plates correctly fitted.



# BZT 2200D Series

## MAINTENANCE CHART

MAINTENANCE OPERATION	Maintenance is an ongoing job. These intervals are maximum times between maintenance operations. Perform more often under severe conditions.						
	FIRST 5 HOURS	DAILY	EVERY 25 HOURS	EVERY 50 HOURS	EVERY 100 HOURS	EVERY 200 HOURS	EVERY 500 HOURS
<b>ENGINE</b>							
Consult the engine manual for additional information and instructions							
Cleck/Top up Oil Level		X					
Check/Top off Engine Coolant		X					
Check for Leaks		X					
Clean Air Intake Screen		X					
Clean Air Cleaner Precleaner					X		
Clean Air Cleaner Element					X		
Clean Cooling Fins					X		
Change Oil and Filter	X					X	
<b>HYDRAULICS</b>							
Check for Leaks		X					
Cleck/Top up Oil Level					X		
Change Oil and Filter	X						X
<b>MACHINE</b>							
Check Interlock Operation		X					
Check Tire Pressures		X					
Check/Top up Battery	Sealed "Maintenance Free" Battery						
Lubricate All Points				X			

---



---



---



---



## This image shows a single sheet of white paper with horizontal blue or grey ruling lines. The lines are evenly spaced and run across the width of the page. There are approximately 20 lines visible. The paper has a slight shadow on the right side, suggesting it's resting on a surface.

\_\_\_\_\_



## **CHECK DAILY**

### **Operator Presence Interlock System - Start Operation**

For the engine to crank, the parking brake must be on, the PTO (blades) off and traction levers in the neutral lock position. Sit in the seat and check, one by one, if the engine will crank with the parking brake off, the blades on, and either traction lever out of neutral lock. Also, make sure engine coolant temperature gauge light flashes upon turning key to the **ON** position.

### **Operator Presence Interlock System - Run Operation**

The operator must be in the seat for the engine to run with the parking brake off, the traction levers moved out of the neutral lock position, or the blades on. To check:

1. Start the engine and run at 1/2 throttle with the operator on the machine but raised off the seat.
2. One by one: move the parking brake to the "OFF" position, traction levers out of the neutral lock position (check each independently), and turn the blades on. Each check should kill the engine after 1/2 second. (A 1/2 second delay is built into the system to prevent engine cutout when traversing rough terrain.)

Repair machine before using if the Operator Presence Interlock System does not operate correctly in start or run. Contact your authorized Bunton dealer.

### **Hardware**

Tighten any nuts and bolts found loose. Replace any broken or missing cotter pins. Repair any other problems before operating.

### **Tire pressure**

Tires should be kept inflated at 14 lbs/in<sup>2</sup> (1.0 kg/cm<sup>2</sup>). Improper tire inflation can cause rapid tire wear and poor traction. Uneven inflation can cause uneven cutting.

### **Fuel System**

Check filter bulb for water accumulation.

### **Radiator and Oil Cooler**

Check for debris build up and clean if necessary

## **Battery**

**⚠ WARNING** Battery acid is very caustic and fumes are explosive and can cause serious injury or death.

Always use insulated tools, wear protective glasses or goggles and protective clothing when working with batteries. You must read and obey all of the battery manufacturer's instructions.

Make absolutely certain the ignition switch is "OFF" and the key has been removed before servicing the battery.

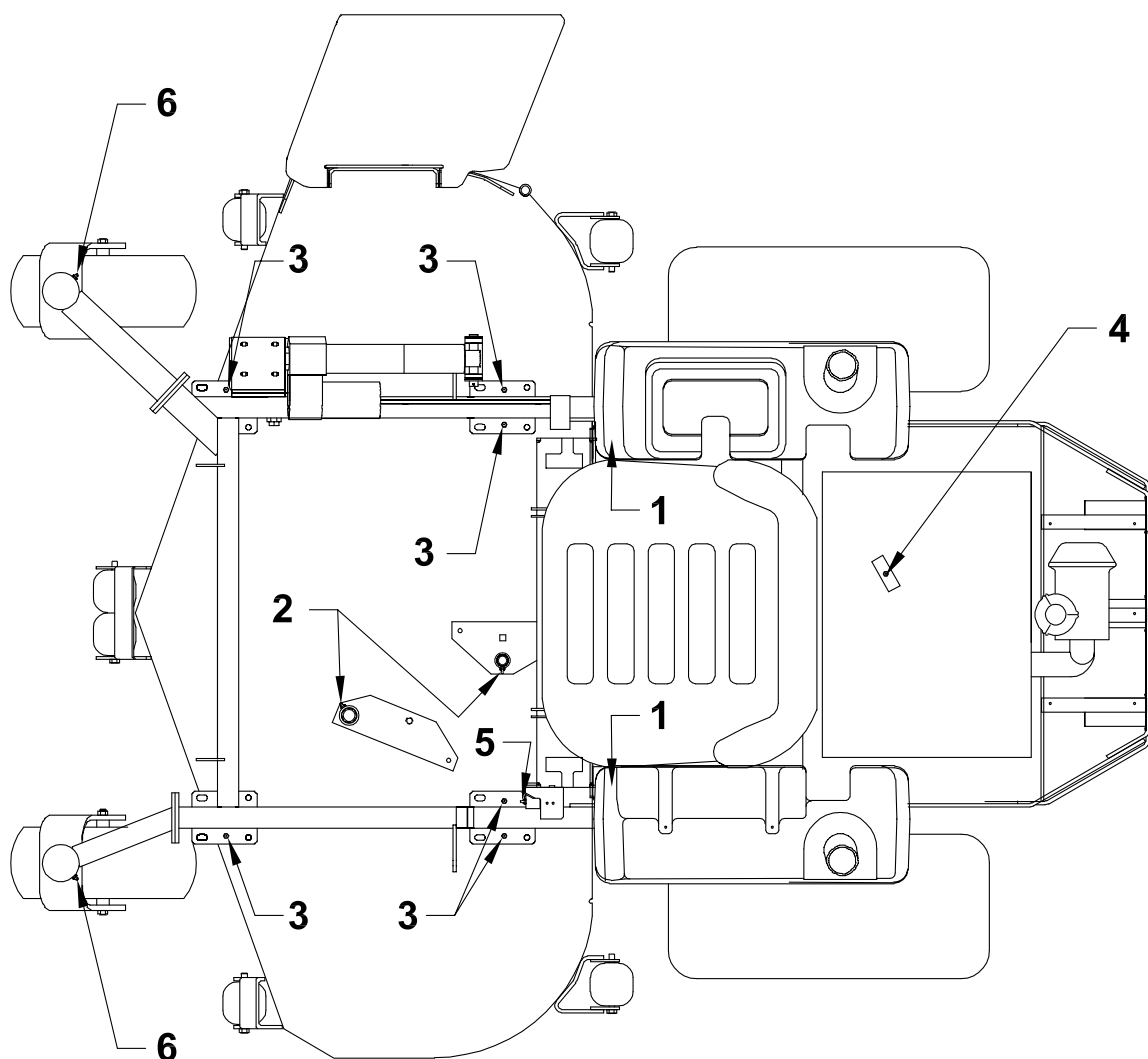
NOTE: The battery included from the factory is of the sealed type.

1. Verify battery polarity before connecting or disconnecting the battery cables.

2. When installing the battery, always assemble the

RED, positive ( + ) battery cable first and the ground, BLACK, negative ( - ) cable last.

3. When removing the battery, always remove the ground, negative ( - ) cable first and the red, positive ( + ) cable last.
4. Check the electrolyte level every 100 hours of operation.
5. Clean the cable ends and battery posts with steel wool. Use a solution of baking soda and water to clean the battery. Do not allow the solution to enter into the battery cells.
6. Tighten cables securely to battery terminals and apply a light coat of silicone dielectric grease to terminals and cable ends to prevent corrosion. Keep terminal covers in place.



### LUBRICATION

Every 50 hours of operation, lubricate the following points (1-5) with grease:

1. Push arms (2 points located at rear of cutterdeck under each fuel tank)
2. Deck idler pivot bearings (2 points)
3. Deck lift pivots (6 points)
4. Hydro belt tensioner (1 point under engine deck)
5. Brake lever pivot (1 point)
6. Caster wheel pivots (2 points)  
(Lubricate every 500 hours or once a year)

**NOTE ON BLADE SPINDLES** - The blade spindles on these machines use a superior sealed bearing that does not require relubrication.



## HYDRAULIC SYSTEM

After the first 5 hours of operation, fluid level in the hydraulic system should be checked every 100 hours or when a leak has occurred. If the fluid is low, check all components for leaks.

To check, remove reservoir cap **M**. The fluid level should be at the bottom of the filler tube. If low, top up (do not overfill). Use one of the oils listed below:

- SAE 15W40 motor oil
- SAE 20W50 motor oil
- 15W50 synthetic motor oil

### AFTER FIRST FIVE (5) HOURS

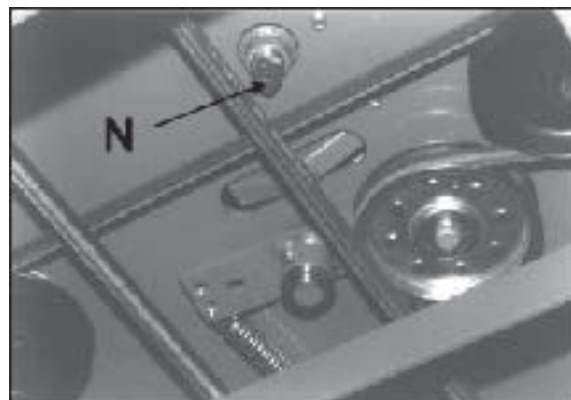
1. Remove plug **N** to drain hydraulic reservoir. Dispose of used oil in accordance with local requirements.
2. Clean and replace the plug.
3. Change hydraulic oil filter **G**.
4. Fill the reservoir with fresh oil to the bottom of the reservoir filler tube, using an oil from the list above. Do not overfill.

### PERIODIC OIL CHANGES

Change the hydraulic fluid and hydraulic filter after each 500 hours of operation using the same procedure given above.



**View from right side**



**View from below machine**

### NOTES:

Before servicing the hydraulic system, stop the engine and disengage the PTO.

- After any hydraulic line is opened, plug or cap it promptly to reduce the risk of contamination.
- Do not use teflon tape on hydraulic pipe fittings. Use a liquid sealant that will dissolve into the system.
- Make sure all hydraulic connections are tight and hydraulic hoses and lines are in good condition before applying pressure to system.

### **⚠ WARNING**

The machine's hydraulic system operates under high pressure. When checking for leaks, do not use your hands to attempt to find a leak. Instead, use cardboard or paper. Escaping hydraulic fluid can be under sufficient pressure to penetrate skin and cause serious injury. If hydraulic fluid is injected into the skin, it must be promptly removed by a doctor familiar with this form of injury or gangrene may result.





### ENGINE OIL

Do not perform engine maintenance without the engine off and PTO disengaged.

#### AFTER FIRST FIVE (5) HOURS

While the engine is warm:

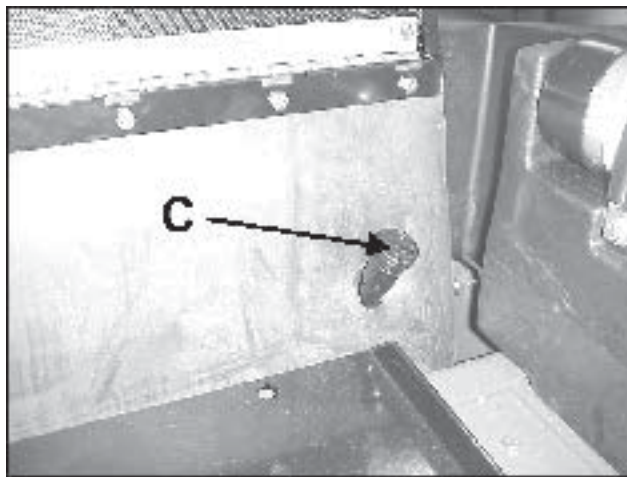
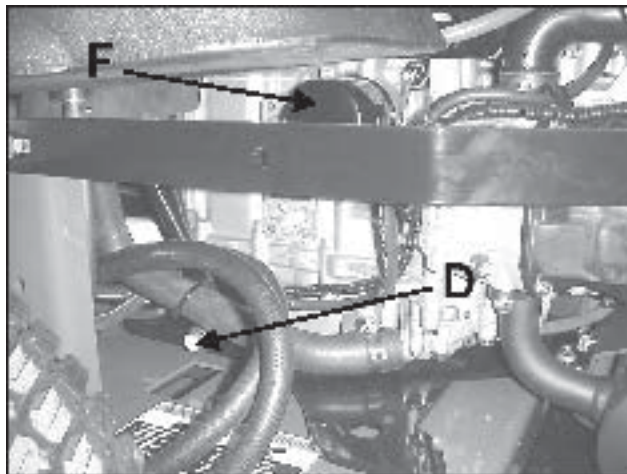
1. Remove drain plug **D** and drain the crankcase. Dispose of used oil in accordance with local requirements.
2. Clean and replace the plug **D**.
3. Change oil filter **F**. See Engine Manual
4. Remove cap **C** and fill the crankcase with fresh oil to the full mark on the dipstick. Do not overfill. See engine manual for oil specifications.

#### DAILY

1. Check oil level with the dipstick.
2. If oil is needed, add fresh oil of proper viscosity and grade. See engine manual for oil specifications. Do not overfill.
3. Replace dipstick before starting engine.

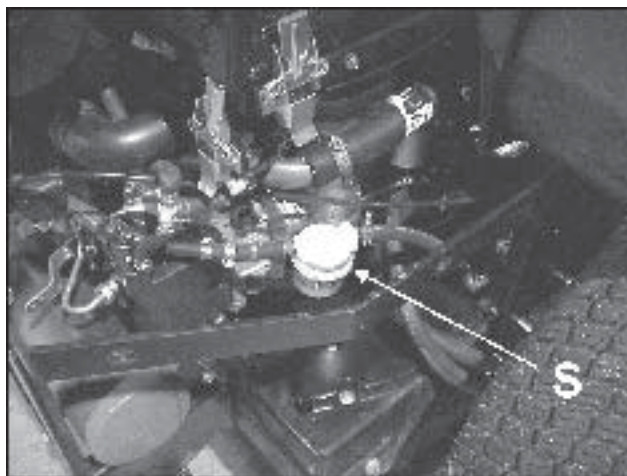
#### PERIODIC OIL CHANGES

1. See engine manual for oil and filter change intervals after the break-in period.
2. Follow instructions for first oil change, above.



### FUEL FILTER

An in-line fuel filter **S** is located at the right side of the engine. Inspect at every oil change to make sure fuel filter is clean and unobstructed. Replace if dirty or after 400 hours of use.







### **AIR CLEANER**

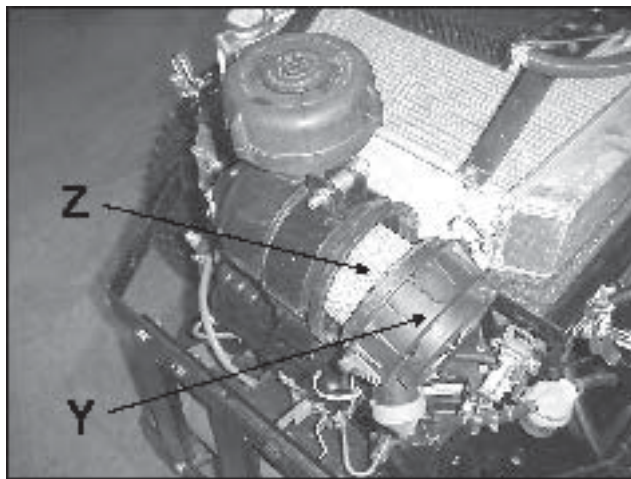
The air cleaner with this engine has a high density paper air cleaner cartridge. It should be inspected regularly and maintained. Uneven running, lack of power or black exhaust fumes may indicate a dirty air cleaner.

To clean or replace diesel engine air cleaner element:

1. Unclamp end cover **Y** and remove element **Z**.
2. Insert new element and replace end cover by clamping in position as shown on the cover.

Every 100 hours (more often under very dusty or dirty conditions), check the paper cartridge.

- Clean by tapping gently.
- Do not wash the cartridge or use compressed air which can cause damage.
- Replace when cartridge is dirty, bent or damaged.





### ENGINE COOLING

Continued operation with a clogged cooling system will cause severe overheating and can result in engine damage.

Perform the following steps daily or when fins become clogged.

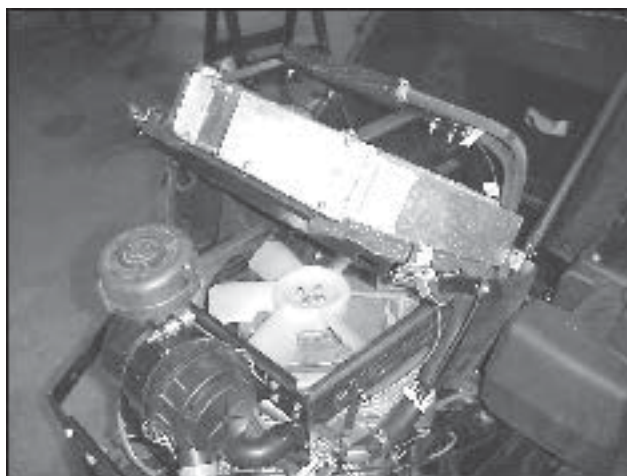
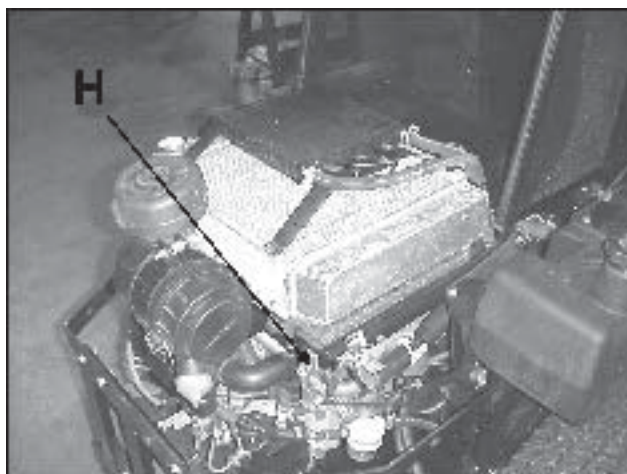
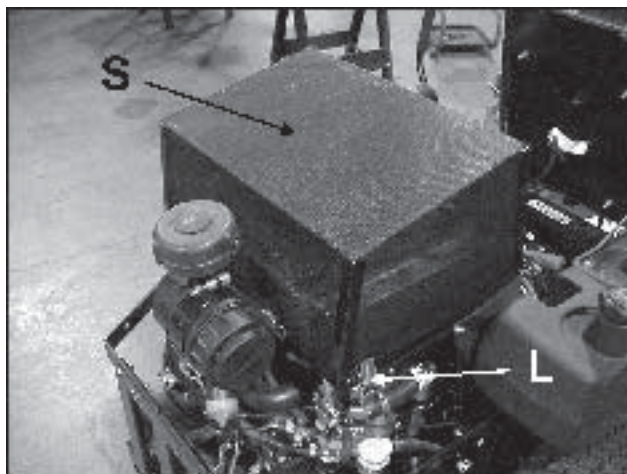
#### DAILY

1. Clean air intake screen **S**.
2. Clean oil cooler and radiator fins by opening latch **L** and rotating screen **S** forward.
3. Wipe or brush off accumulated debris.
4. Unclamp and raise radiator by opening latch **H**. Using compressed air, blow debris from fins directing air away from the engine.

**NOTE:** Do not use pressurized water or other liquid.

5. When completed, clamp the radiator and screen back into place.

**NOTE:** Engine will not crank unless radiator is securely clamped into place.

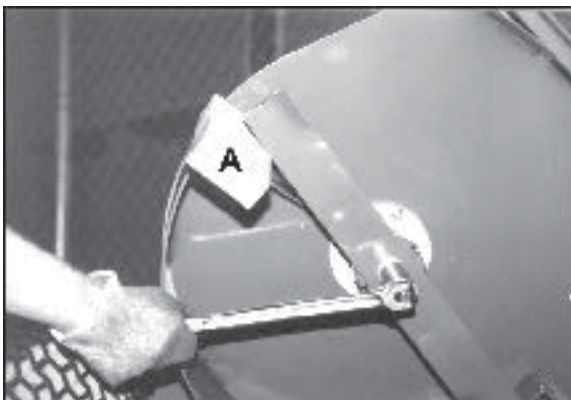




## BLADE REMOVAL

Follow these instructions to prevent injury during blade removal:

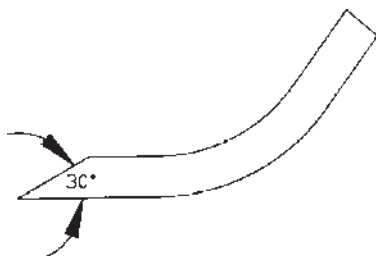
1. Loosen with a box wrench or a socket and long breaker bar. To gain additional leverage, slip a long pipe or thick-walled tube over breaker bar or wrench.
2. Insert wood block **A** as shown, with grain perpendicular to blade, to prevent blade from turning when loosening.
3. Wear thickly padded gloves. Keep hands clear of blade path. Blades may rotate when bolt releases.



## SHARPENING

Blades may be sharpened by filing or grinding.

- Inspect blades before sharpening.
- Replace bent or cracked blades.
- Replace blades when the lift portion has worn thin.
- Maintain cut angle at 30°.
- Do not overheat blades when sharpening.
- Always use Bunton blades. Use of another manufacturer's blades may be dangerous.



## BLADE BALANCE

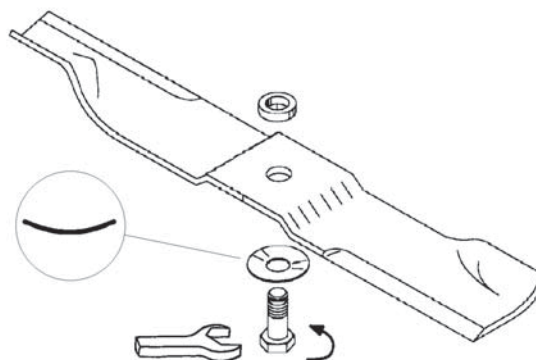
Blade balance must be maintained at 5/8 oz-in (19.4 g-cm) or less. Failure to keep blades balanced causes excess vibration, wear, and shortened life of most components of the machine.

### To balance a blade:

1. Sharpen blade first.
2. Balance the blade at the center.
3. Attach a 1/8 oz (3.9 g) weight at a distance 5" (127 mm) from center on the light end. This should make the light end the heavy end:
  - If it does, the blade is balanced.
  - If does not, file or grind the heavy end until the addition of the weight makes the light end the heavy end.

## BLADE INSTALLATION

1. Wear thickly padded gloves to prevent cuts from the sharp blade.
2. Insert the blade bolt, in order, through the conical washer (cup side toward the blade, as shown), the blade, and the blade spacer.
3. Install assembly on the blade spindle.
4. Torque the blade bolt to 70 ft-lbs.





SYMPTOMS	PROBABLE CAUSE	CHECK FOR	SOLUTION
Engine will not start.	Safety interlock not activated.	Radiator mounting clamp loose.	Latch clamps.
		PTO Switch engaged.	Shut off PTO.
		Parking brake disengaged.	Engage parking brake or adjust parking brake switch.
		Position of traction control levers.	Place levers in neutral lock position or adjust traction control switch.
	Battery discharged. (See Page 8 for charging instructions.)	Loose or corroded cable terminals.	Clean and tighten cable terminal fasteners.
		Charger relay function.	Remove and check charge relay switching. Replace relay if necessary.
		Electrical continuity.	Repair as necessary.
Engine cranks but will not start.	Cold ambient temp.	Glow plug chart. (See chart on Page 23.)	Use glow plugs per recommendations.
		No fuel.	Add clean fresh fuel.
		Lever position of shut off/tank select valve.	Direct lever toward tank containing fuel.
	Fuel solenoid not activated.	Air in fuel line. Air must be purged from fuel line after running out of fuel.	Purge air from fuel line. (See decal or Page 12.)
		Electrical continuity. (Solenoid should "click" when keyswitch is turned on.)	Check and tighten all terminals as required.
		Blown 30 Amp fuse.	Check fuel solenoid relay. Replace relay if necessary. Replace fuse. determine cause for burned fuse and repair as required.



# **BZT 2200D Series**

## **TROUBLESHOOTING**

<b>SYMPTOMS</b>	<b>PROBABLE CAUSE</b>	<b>CHECK FOR</b>	<b>SOLUTION</b>
Engine starts but runs unevenly.	Fuel line not bled after running out of fuel.	Air in fuel line.	Purge air from fuel line.
	Water in fuel or plugged fuel filter.	Water in fuel bowl. Dirty fuel filter.	Replace fuel filter.
	Engine air intake restricted.	Dirty air filter.	Clean or replace air filter.
Engine overheating	Air flow through radiator restricted.	Plugged air screen.	Clean screen.
		Plugged radiator core.	Clean radiator core. (See instructions on Page 13.)
	Low coolant.	Coolant level in surge tank.	See engine manual.
		Collapsed or leaking hose between surge tank and radiator.	Repair as required.
Cutterdeck shuts down without being turned off.	Engine overheating.	See engine overheating of troubleshooting section.	See engine overheating of troubleshooting section.
	Open wiring circuit.	Blown 20 Amp fuse.	Replace fuse/ determine cause for burned fuse and repair as required.
Engine shuts down immediately when operator raises from seat.	Time delay module, fuel shut off timer.	Loose wire harness terminals/ module/timer.	Check and tighten all terminals/delay module/timer.
Gauges/Indicators not functioning.	Open wiring circuit.	Loose wiring terminals or damaged electrical wiring.	Check and tighten all terminals.
		Blown 10 amp fuse.	Replace fuse/ determine cause for burned fuse and repair as required.
Tractor does not respond to movement of control levers.	Hydraulic oil bypassing pumps.	Burned out bulbs.	Replace bulbs
		Open tow valve(s).	Close tow valves.
	Low level of hydraulic oil.	Level of hydraulic oil in reservoir.	Add hydraulic oil/ determine cause for oil loss.



### HEIGHT OF CUT

The height of cut is set by moving height of cut pin **N** to the hole designated for the height of cut desired.

To change the height of cut:

1. Lift the deck to the highest position.
2. Move pin **N** to the selected hole.
3. Lower the deck until the lift lever is stopped by the pin.

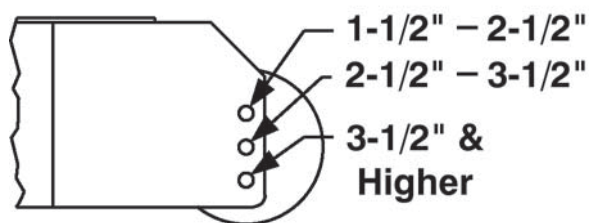
#### NOTES:

- Height of cut may vary due to the amount of tread on the tires, tire diameter or inflation pressure.
- For best results, adjust the rear deck rollers for the height of cut to be used (see below).



### REAR DECK ROLLERS

The rear outside deck rollers are adjustable up and down to provide improved deck flotation and scalping protection at various heights of cut. They are not intended to ride continuously on the ground. Adjust no closer than 3/8" (10mm) to the ground.



Height of cut ranges for roller adjustment



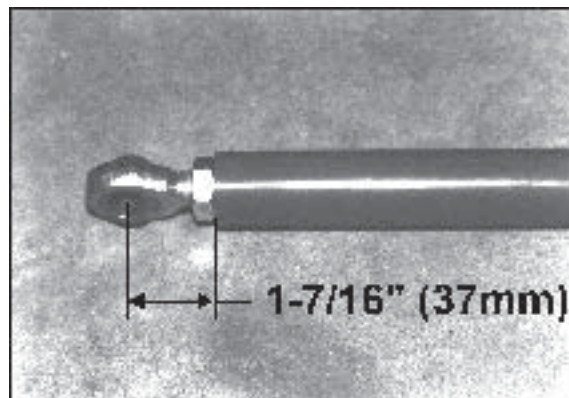


### **PUSH ARMS**

The push arm rod ends must be adjusted evenly to:

- locate the deck perpendicular to the front-to-rear axis of the machine; and
- so the notch at the front of the engine deck clears the push arm bracket on the rear of the cutterdeck when the cutterdeck is raised to the transport position.

Adjust the rod end length to 1-7/16" (37 mm) to start. If any additional adjustment is required, adjust both rod ends so the same number of threads show.



### **BELTS**

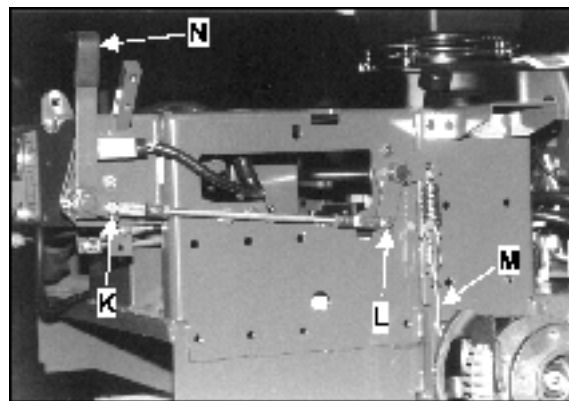
All belts are tensioned by spring loaded idlers. No adjustment is required.

### **PARKING BRAKE**

Start with parking brake **N** in the OFF position.

1. Adjust the parking brake rod to provide a distance of 14-3/16" between pin **K** and pin **L**.
2. Disconnect one end of rods **M** (at brakes on both sides of the machine).
3. Move the parking brake lever to the ON position.
4. Adjust rods **M** on each brake to be 3/4" short of connecting to the spring when all the slack is taken out of the brake linkage and brake lever **N**.
5. Move the parking brake to the OFF position and reconnect rods **M**.

This adjustment will cause the brake springs to stretch 3/4" when the brake is in the ON position to provide the correct parking brake force without overloading the brake.



**Parking brake assembly (fuel tank, tire and deck not shown for clarity - brake in ON position).**

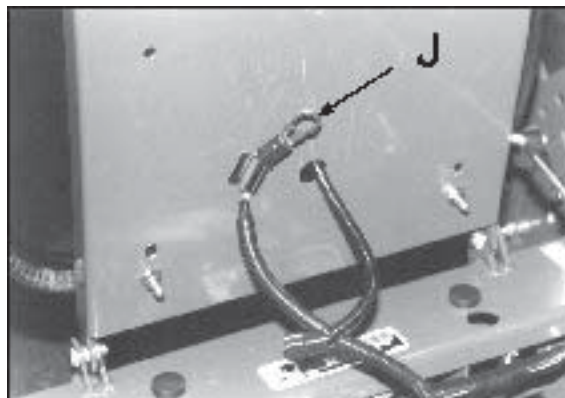


## HYDROSTAT ADJUSTMENTS

A turnbuckle-style hydrostat neutral adjustment is provided.

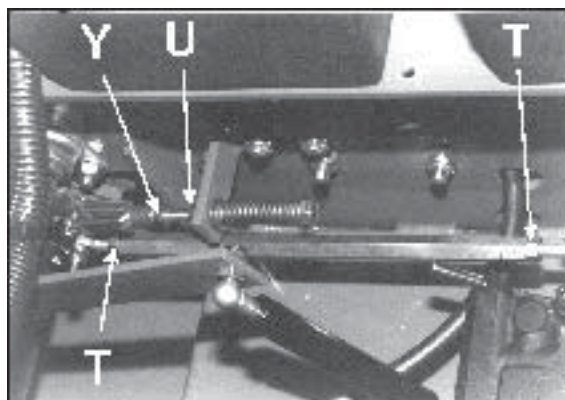
### Neutral:

1. Support the machine with the rear wheels off the ground. Use jackstands or equivalent support. Do not rely only on mechanical or hydraulic jacks.
2. Move the traction levers out into the neutral lock position and raise the seat.
3. Disconnect the seat switch and temporarily connect the two terminals with jumper wire **J** as shown.
4. Start the engine and run at low speed.
5. Loosen jam nuts **T** at both ends of the turnbuckle.
6. Rotate the turnbuckle until the corresponding wheel stops turning. Lock the turnbuckle jam nuts. Run the engine up to high idle to check the adjustment. Readjust if necessary.
7. Repeat steps 5 and 6 for the opposite side.
8. Remove the jumper wire and reconnect the seat switch.



### Reverse Return:

1. Move traction levers out to the neutral lock position and raise the seat.
2. Locknut **U** should be run on the bolt as far as it will go.
3. Loosen jam nut **Y**. Adjust the clevis yoke by turning the head of the bolt until the clevis pin just makes contact with the rear of the slot in the lever it connects with. Tighten jam nut **Y**.
4. Repeat steps 2 and 3 for the opposite side.



**Right side adjustments**  
(wiring harness and seat rod removed for clarity)

**NOTE:** A slight creep in reverse is acceptable provided the wheel does not turn and the hydrostat pump does not whine when the parking brake is on.





## BZT 2200D Series

## BELT REPLACEMENT

**Note:** Always use Bunton replacement belts, not general purpose belts. Bunton belts are specially designed for use on commercial mowers and will normally last longer.

### ENGINE-CUTTERDECK (PTO) BELT

1. Set the cutterdeck in the lowest height-of-cut position.
2. Attach a short extension to a 3/8" drive ratchet. Insert the ratchet extension into the square hole in the idler arm and use the ratchet to rotate the idler assembly enough to remove the belt. Remove the belt from the idlers and center cutterdeck pulley. Push belt back under engine deck.
3. Remove old belt from the machine.
4. Install a new belt by performing the these steps in reverse order.

**NOTE:** If clutch and torque restraint are ever removed for maintenance, make sure when reinstalling carriage bolts securing torque restraint **Q** to clutch **R** to put the carriage bolts in facing the ground first through the clutch and then through the torque restraint and secure them with the nuts as shown.





### CUTTERDECK BELT

1. Set the cutterdeck in the lowest height-of-cut position.
2. Remove the engine-cutterdeck belt from the deck idlers and pulley (see engine-cutterdeck belt replacement). Push it aside but don't remove it from the machine.
3. Run the cutterdeck belt off the idler as shown. Remove it from the deck.
4. Install the new belt by performing these steps in reverse order. Take care to get the new belt on the correct side of the belt guides.
5. Reinstall engine-cutterdeck belt (see engine-cutterdeck belt replacement).



### PUMP-DRIVE BELT

1. Remove engine-cutterdeck belt (see engine-cutterdeck belt replacement).
2. Attach an extension to a 3/8" drive ratchet. Insert the ratchet extension in the square hole of the pump drive idler arm. Use the ratchet handle to rotate it enough to remove the pump drive belt.
3. Install a new pump drive belt in the same manner as it was removed.
4. Reinstall engine-cutterdeck belt (see engine-cutterdeck belt replacement).





## POWER UNITS

### ENGINES :

**Construction:** Aluminum block with cast-in sleeves. Aluminum head, metal gasket.

**Configuration:** 4-stroke, vertical shaft, V-twin cylinder, overhead valve, liquid-cooled indirect injection diesel.

### DRIVE SYSTEM:

Full hydrostatic pump and wheel motor combination for independently controlled drive wheels.

**Pump:** Hydrogear BDP-10L 10cc variable displacement piston pump.

**Motors:** Parker/Ross 15 cu.in. displacement MB series. Direct drive 1-1/4" (31.8mm) diameter output shaft.

**Turn Radius:** 0"

### OPERATOR PRESENCE INTERLOCK SYSTEM:

**Start:** The PTO (blades) must be off, traction levers in neutral lock, and parking brake on for engine to crank.

**Run:** Operator must be in seat to take parking brake off, to move traction levers out of the neutral lock position, or to turn the PTO (blades) on or the engine will kill. The parking brake must be off for the traction levers to move out of the neutral lock position.

The operator may leave the seat with the engine running if the parking brake is on, the PTO (blades) is off, and the traction levers are in the neutral lock position. A time delay eliminates annoying engine cutout from operation over rough terrain.

### CONTROLS:

Throttle; power takeoff (PTO) clutch switch; traction levers; parking brake lever; lift lever.

### FUEL SYSTEM:

One tank on each side of operator, each with a shutoff (1/4 turn). Total capacity 9-1/2 gallons (40 liters). Fuel selector/shutoff switch on front panel (1/4 turn). Replaceable fuel filter.

### MAXIMUM GROUND SPEEDS:

**Forward:** 8 mph (12.9 km/h)

**Reverse:** 4 mph (6.4 km/h)

### WHEELS & TIRES:

#### Drive wheels:

642225 23 X 10.50-12 4-ply turf tread tires

642226 23 X 12.00-12 4-ply turf tread tires

**Casters:** 13x5.00-6 4-ply rib tread tires

**Pressure:** 14 p.s.i. (1 kg/cm<sup>2</sup>)

### BRAKING:

Hayes disc type parking brakes. Spring applied for overload protection.

### SEAT:

High back, foam padded, suspension with standard armrests. Fore and aft adjusters, hinged for easy tilt-up access to pumps and battery. Prop rod to hold in up position. Internally mounted seat switch.

### WEIGHT:

1100 lbs (499 kg)



ENGINES	
MODEL NUMBERS	642225, 642226
MANUFACTURER	Yanmar
MODEL	2V78
CYLINDERS	2
COOLING	Liquid
BORE/STROKE	3.07 X 3.09 (78 X78.4mm)
DISPLACEMENT	46 cu.in. (749 cc)
COMPRESSION	23:1
OUTPUT POWER	20 hp (14.95 kw) @ 3600 rpm
OUTPUT TORQUE	32.5 ft-lb (44 J) @ 2400 rpm
LUBRICATION	FULL PRESSURE
GOVERNOR	Mechanical
AIR CLEANER	Dry Type with Evacuator Valve
CHARGING SYSTEM	20 amp, regulated
BATTERY	BCI group U1
FUSES	Three, 10, 20 , 30 amp blade
FUEL CONSUMPTION @ MAX LOAD/ SPEED	1.20 gal./hr (4.6l/hr)

FLUID CAPACITIES	QUANTITY	TYPE	FILTER
FUEL	9.5 gal. (40 l)	See Chart on Following Page	REPLACEABLE
ENGINE OIL	2.4 qts (2.27 l) YANMAR	See Chart on Following Page	SPIN-ON REPLACEABLE
HYDRAULIC OIL	2.6 qts (2.46 l)	SAE 15W40 MOTOR OIL SAE 20W50 MOTOR OIL 15W50 SYNTHETIC	10 MICRON SPIN-ON REPLACEABLE
COOLANT	1.48 qts (1.4 l)	50/50 MIX OF WATER AND ETHYLENE GLYCOL	N/A



# BZT 2200D Series

## SPECIFICATIONS

Destination				Standard		Cold Region	Extremely Cold Region	
Ambient Temperature: °C				> -5	-5 ~ -15	-15 ~ -20	-20 ~ -25	< -25
12V/1.0 kW Starting Motor				○	○	○	○	○
Battery	Type	Cold Cranking Current: A		○	○	○	○	○
	JIS 55B24	435						
	SAE 24R — 440	440						
	27H — 435	435						
Standard Glow Plug : 15 ~ 20 sec.					○	○	○	○
Super Quick Glow Plug (Option) : 8 sec.						△	△	△
Block Heater (Option) : 115 VAC/400 W								○
Diesel fuel	Japan	JIS K2204		Grade 2	Grade 3		Special Grade 3	
	U.S.A.	ASTM D975		2 — D	1 — D			
	Canada	CAN/CGBB — 3.5 — M88		B	A		A or AA	
	France	NF — M15 — 007		Gas oil				
	Germany	DIN 51 001		DK				
	UK	BS 2869		Class A1				
	Sweden	SS 155432		Dieselbrännolja				
Lubricating oil	Viscosity	SAE J — 3000		10W — 30			5W — 20	
	Grade	(*1) API	Japan	CC				
				CD				
		U.S.A.	CC, CD or CF					
			Canada	CD, CF				
		(*2) ACEA	France	≥ACEA-B1 (API-CC, CD or CF)				
		Germany UK Sweden	≥ACEA-E1 (API-CD, CF)					
(*1) API : American Petroleum Institute (*2) ACEA : Association of European Automotive Manufacturers								



CUTTERDECKS		
MODEL NUMBER	642225	642226
TYPE	Side Discharge	Side Discharge
CUTTING WIDTH	52.5" (133 cm)	61" (155 cm)
WIDTH	N/A	N/A
WIDTH (CHUTE UP)	56.25" (143 cm)	62" (157 cm)
WIDTH (CHUTE DOWN)	64.5" (164 cm)	73" (185 cm)
CUTTING UNIT	One high lift blade (low lift optional)	One high lift blade (low lift optional)
NUMBER OF CUTTING UNITS	3	3
BLADE LENGTH	18" (46 cm)	21" (53 cm)
BLADE THICKNESS	.205" (5.2 mm)	0.25" (6.35 mm)
TIP SPEED	15694 ft/min 4784 m/min	18310 ft/min 5580 m/min
DAILY PRODUCTION (8 hr @ 6 mph)	Up to 25.5 acres (10.3 ha)	Up to 29.5 acres (11.9 ha)

### CONSTRUCTION:

Fabricated and welded or bolted 10-gauge, double-layer steel top with 7-gauge side skirts. Full floating design.

### CUTTERDECK DRIVE SYSTEM:

Electric clutch/brake drives belt directly from engine to center spindle of cutterdeck. No twists in drive belt.

### SPINDLES:

Top mounted and maintenance free, with 1" shaft in precision machined, ductile iron housing

### ANTI-SCALP ROLLERS:

52" Cutterdecks - 6 Rollers  
61" Cutterdecks - 7 Rollers

### CUTTING HEIGHT & PRODUCTION:

**Height:** Spring assisted lift lever allows easy setting of cut heights from 1-1/2" to 4-1/2" in 1/2" increments. "Set and forget" feature allows height of cut to be set and returned to without searching from operator position.



**BZT  
2200D  
Series**

**PARTS SECTION**

---

# **PARTS SECTION**

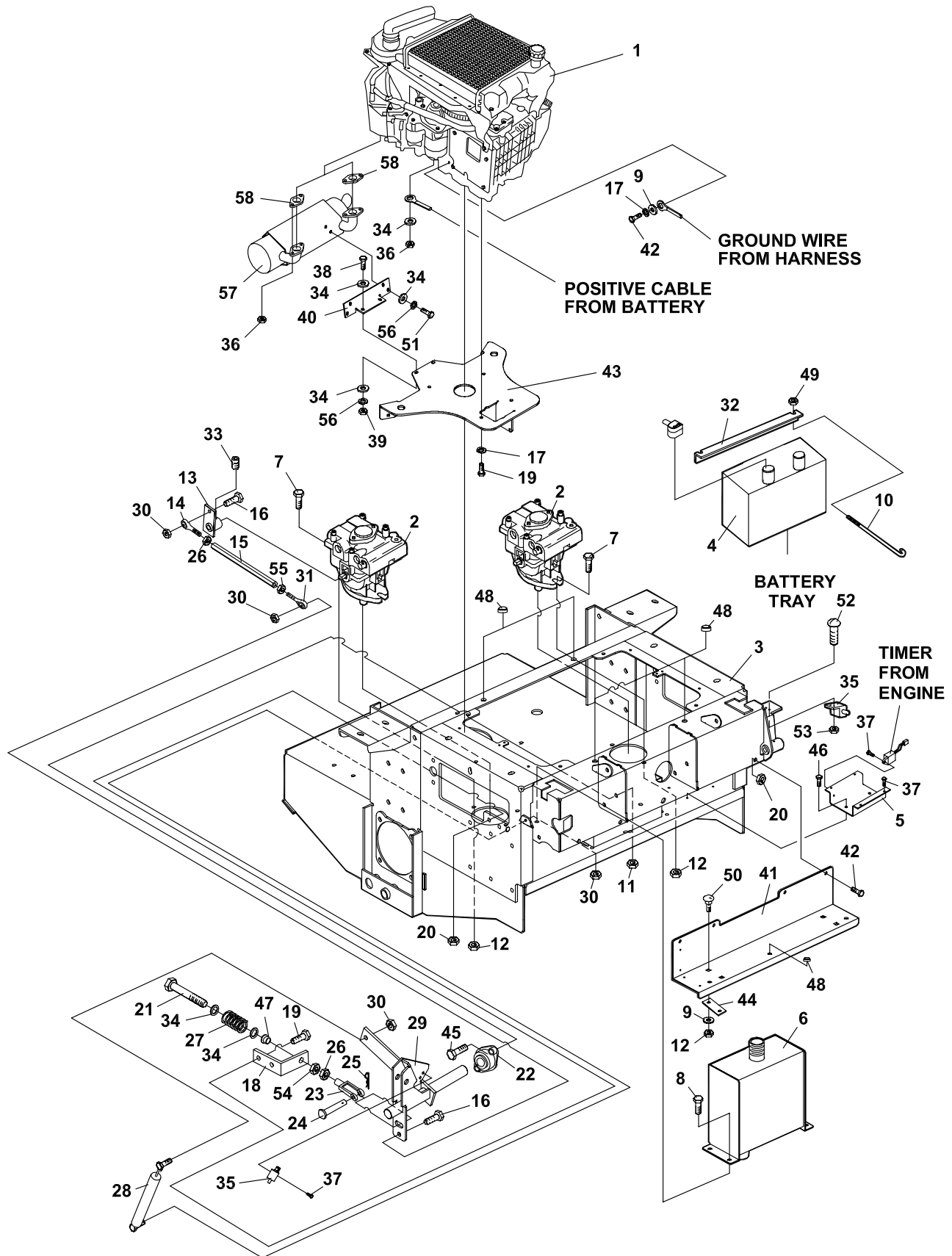


# UPPER ENGINE DECK ASSY

**BZT  
2200D  
Series**



**FIGURE 1**







# BZT 2200D Series

## UPPER ENGINE DECK ASSY

2721545-01

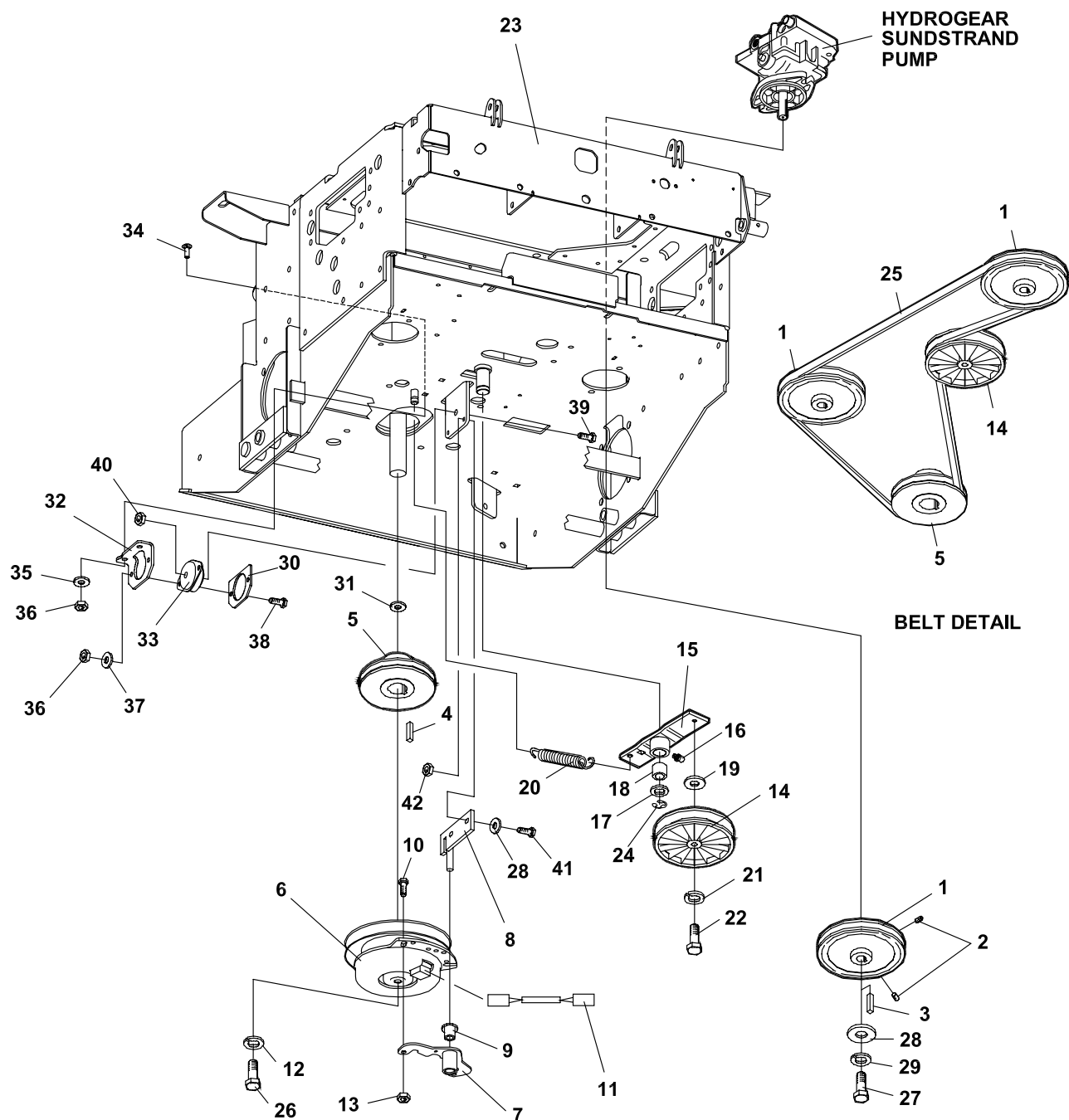
FIGURE 1

ITEM	PART NO.	DESCRIPTION	QTY	ITEM	PART NO.	DESCRIPTION	QTY
1-1	2720883	ENGINE YANMAR 2V78	1	1-42	64205-007	BLT-M10-1.5 X 20	5
	(SERVICE MANUAL YANMAR #49961-101251)			1-43	2720865.7	PLATE-ENGINE MOUNT	1
	2720883-01	FILTER-FUEL	1	1-44	2188146	STRIP, WEAR	2
	2720883-02	FILTER-ENGINE OIL	1	1-45	64123-15	BLT-HEX 3/8-16 X 3/4	8
1-2	2721615	PUMP-HYDRO	2	1-46	64152-23	SCREW 1/4-20X3/8	2
	(SEE FIGURE 8 FOR BREAKDOWN)			1-47	38304-02	S BRG FLGD PLASTIC	2
1-3	2720997	S-ENGINE DECK W/LABS	1	1-48	810149	BUMPER-RUBBER	7
1-4	148074	BATTERY	1	1-49	64229-02	LOCKNUT-NYLON 5/16-18	2
1-5	2721530.7	BRACKET-RELAY	1	1-50	64243-02	BLT-CRG M10-1.5 X 20	4
1-6	2186211	S HYD RESERVOIR W/LAB	1	1-51	64205-001	BLT-MET M8-1.25 X 20	2
1-7	64263-013	BLT-FLG HD M10-1.5 X 30	4	1-52	64152-46	SCR-SLT HH #10-24	2
1-8	64197-016	BLT-TR 3/8-16X1 1/2	4	1-53	64025-15	NUT-HEX #10-24 KEPS	2
1-9	64251-004	WSHR-M10	5	1-54	64229-08	LOCKNUT-NYLON 5/16-24	2
1-10	806953	BOLT-BATTERY HOOK	2	1-55	64025-33	NUT- 5/16-24 LH	2
1-11	64141-4	NUT-WLF 3/8-16	8	1-56	64006-02	LOCKWSHR-HELICAL 5/16	4
1-12	64237-03	LOCKNUT-NYLON M10-1.5	12	1-57	2720884	MUFFLER-YANMAR 2V78	1
1-13	4118430	ARM-PUMP	2	1-58		GASKET-MUFFLER	2
1-14	38369-02	ROD END BALL JOINT LH	2		(OBTAIN THROUGH YANMAR DEALER)		
1-15	2188140	TURNBUCKLE	2				
1-16	64205-003	BLT-MET M8-1.25 X 30	4				
1-17	800488	LOCKWASHER M10	5				
1-18	2182405.7	BRKT-REVERSE RETURN	2				
1-19	A1104057	BLT-M10-1.50 X 25	8				
1-20	64246-03	WIZ NUT-MET M10-1.5	8				
1-21	64123-205	BLT-HEX 5/16-24 X 4	2				
1-22	2188145	BEARING-SELF ALIGNED	4				
1-23	38020N	CLEVIS-YOKE PLATE	2				
1-24	64188-02	PIN-CLEVIS 5/16 X 1	2				
1-25	64168-2	HAIRPIN COTTER	2				
1-26	64025-03	NUT-HEX 5/16-24	4				
1-27	2188139	SPRING-COMPRESSION	2				
1-28	2721246	DAMPENER	2				
1-29	4112105.7	WLDMT-MTN CTRL RH	1				
	* 4112104.7	WLDMT-MTN CTRL LH	1				
1-30	64237-05	LOCKNUT-NYLON M8-1.25	8				
1-31	38369-01	ROD END BALL JOINT RH	2				
1-32	2182427.7	HOLD DOWN, BATTERY	1				
1-33	64192-06	SETSCR SQHD 5/16-18X3/4	2				
1-34	64163-55	WSHR .328X.75X14 GA	11				
1-35	108208	SWITCH, DBL POLE	3				
1-36	64246-02	NUT-WLF M8-1.25	5				
1-37	64197-015	BLT-TDFM #10-32X1/2 TRX	9				
1-38	A1103051	BOLT-M8-1.25 X 25	2				
1-39	64207-01	NUT-M8-1.25	2				
1-40	2720867.7	BRACKET MUFFLER	1				
1-41	2182404.7	PLATE, KICK	1				

\* NOT ILLUSTRATED

## FIGURE 2

# BZT 2200D Series



**TORQUE ITEM 26  
TO 50 FT/LBS +/-10%**



# BZT 2200D Series

## LOWER ENGINE DECK ASSY

2721545-02

FIGURE 2

ITEM	PART NO.	DESCRIPTION	QTY
2-1	2308148	PUMP-PULLEY	2
2-2	64044-18	SCREW-SET 5/16-18 X 5/16 (LOCTITE SET SCREWS IN PLACE)	4
2-3	64238-03	KEY-MET 5mm SQ X 28mm	2
2-4	64164-12	1/4X1/4X1 SQ END KEY	1
2-5	2188188	PULLEY-4.25 ENGINE	1
2-6	2721337	CLUTCH-ELECTRIC (INCLUDES ITEM 11)	1
2-7	2721338.7	WLDMT-CLUTCH STOP	1
2-8	2720868.7	WLDMT-CLUTCH BRACKET	1
2-9	38304-03	BEARING-PLASTIC	1
2-10	64205-001	BLT-MET M8-1.25X20	2
2-11	2720949	ASSY-CLUTCH WIRE	1
2-12	800488	LOCKWSHR-HELICAL M10	1
2-13	64265-04	NUT-FL NYL LOCK M8-1.25	2
2-14	2308000	PULLEY-IDLER 4.00 E.O.D.	1
2-15	2306082.7	WLDMT-IDLER ARM (INCLUDES ITEMS 16 & 18)	1
2-16	35027N	ZERK FITTING	1
2-17	64163-65	WASHER 18 GA	1
2-18	65103A	BEARING-BUSHING	1
2-19	33148-01	SPACER	1
2-20	38219	SPRING-TENSION	1
2-21	64006-03	LOCKWSHR-HELICAL 3/8	1
2-22	64123-21	BLT-HEX 3/8-24X1 1/4	1
2-23	2720997	S-ENGINE DECK WLABS	1
2-24	64221-04	E-RING .875	1
2-25	2720880	BELT-PUMP DRIVE	1
2-26	64205-019	BLT-MET M10-1.50 X 80	1
2-27	64205-013	BLT-MET M6-1X12	2
2-28	64163-34	WSHR.256/.267X1X11GA	4
2-29	64006-01	LOCKWSHR-HELICAL 1/4	2
2-30	2722304.7	PLATE-CLAMPING	3
2-31	64163-81	WASHER-1.140 X 2.0 X .25	1
2-32	2722303.7	BRKT-ISO MOUNT	3
2-33	2720863	MOUNT-ISO	3
2-34	64018-15	BLT-CRG 5/16-18X1	6
2-35	64163-29	21/64X1X11GA.WASHER	6
2-36	64229-02	LOCKNUT-NYLON 5/16-18	12
2-37	64163-55	WASHER .328X.75X14 GA	6
2-38	64123-107	BLT-HEX 5/16-18X7/8	6
2-39	64205-052	BLT-MET M10-1.50 X 50	3
2-40	64237-03	LOCKNUT-NYLON M10-1.5	3
2-41	64205-025	BLT-MET M6-1.00X25	2
2-42	64237-02	LOCKNUT-NYLON M6-1.00	2

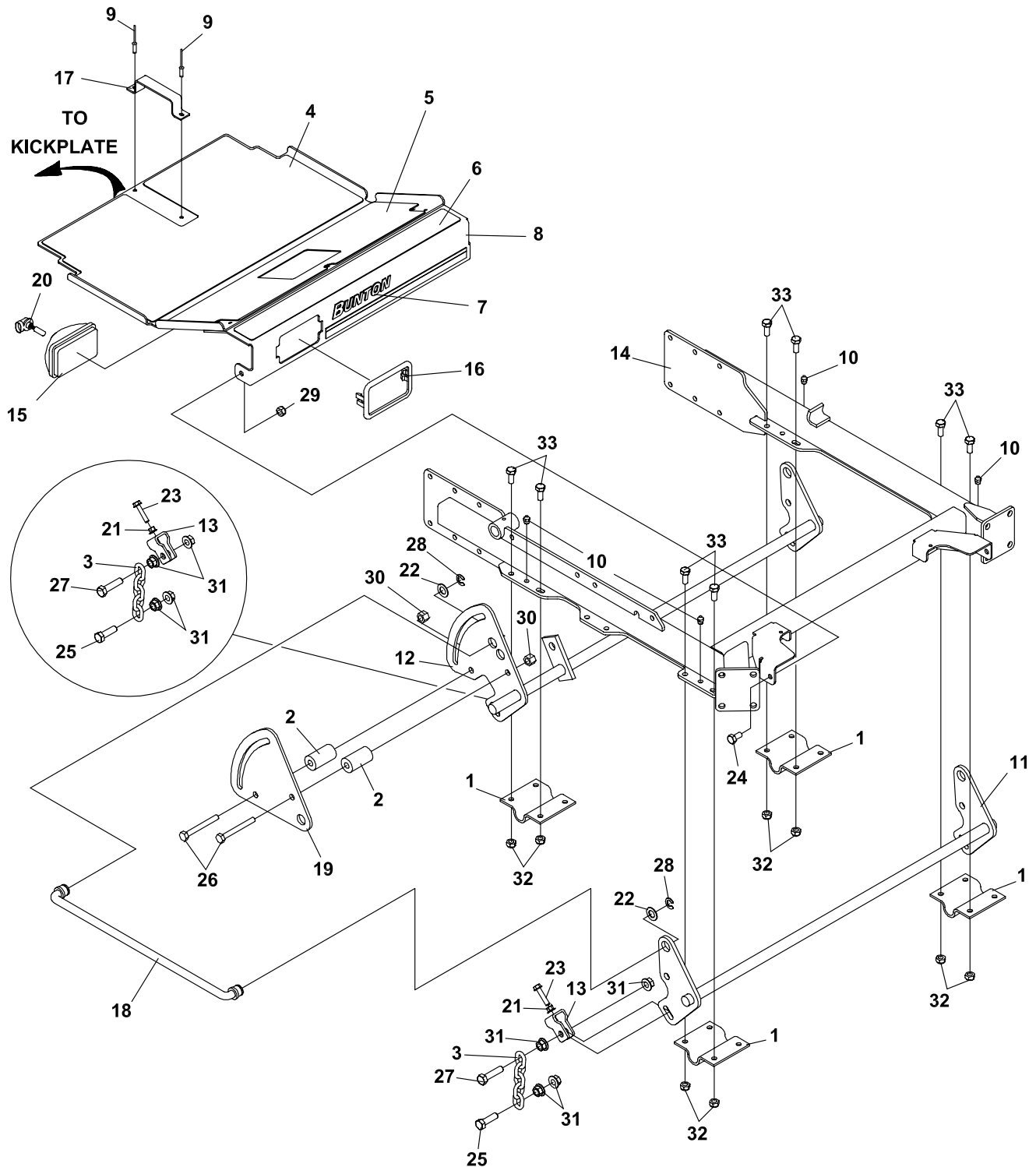
ITEM	PART NO.	DESCRIPTION	QTY
------	----------	-------------	-----

# CRADLE ASSEMBLY

BZT  
2200D  
Series



FIGURE 3





# BZT 2200D Series

## CRADLE ASSEMBLY

2722089-03

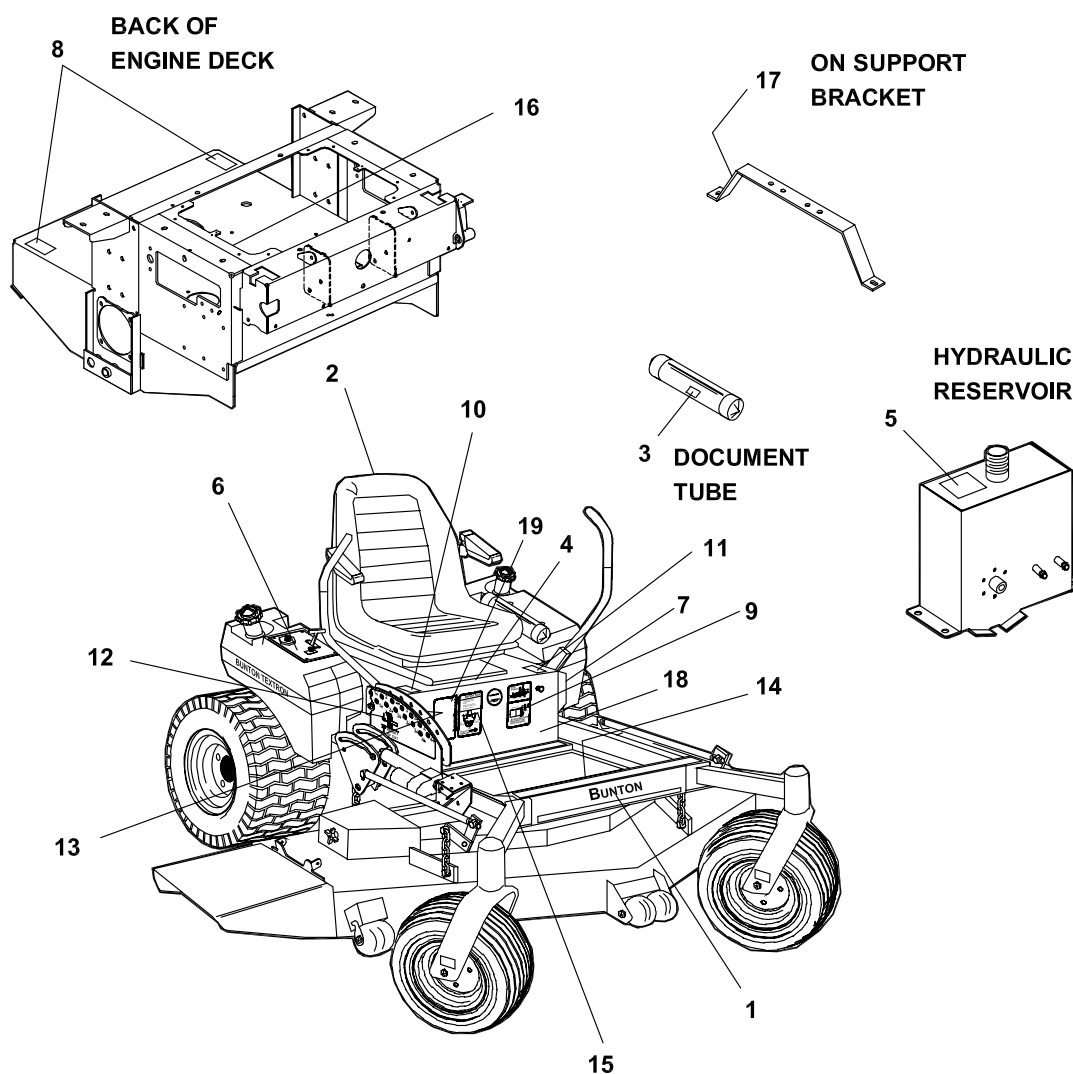
FIGURE 3

ITEM	PART NO.	DESCRIPTION	QTY
3-1	2182356.7	BRKT-SHAFT HANGER	4
3-2	2183077	SPCR-DKLIFT ACTUATOR	2
3-3	2188127	CHAIN-6.35 (.250) 5 LINKS	4
3-4	2721859	MAT-FOOT PLATE LOWER	1
3-5	2721860	MAT-FOOT PLATE MIDDLE	1
3-6	2721861	MAT-FOOT PLATE UPPER	1
3-7	2721992	LABEL-BUNTON STRIPE	1
3-8	2721868	S-FOOT PLATE W/LABS	1
		(INCLUDES ITEMS 4-6)	
3-9	64215-07	RIVET-POP IFI #84	2
3-10	85051	ZERK-1/8 PIPE	6
3-11	2722558.5	WLDMT-DECK LIFT, FRONT	1
3-12	2722614.5	WLDMT-ELECTRIC LIFT	1
3-13	2722630	CLIP-DECK HEIGHT ADJ	4
3-14	2722723.5	WLDMT-CRADLE	1
3-15	3010329	LAMP-FLOOD 12V	1
3-16	3010330	KIT, SNAP MOUNT BEZEL	1
3-17	32418-04	HANDLE W/SLOT	1
3-18	4109960	ROD-DECK LIFT	2
3-19	4112962.5	PLATE-DECK LIFT OUTER	1
3-20	5003693	S-894 12V BULB	1
3-21	64141-2	NUT-WLF 1/4-20	4
3-22	64163-65	WSHR.890X1.375X18GA	8
3-23	64197-020	BLT-TDFM 1/4-20X1-1/2	4
3-24	64205-007	BLT MET M10-1.50X20	2
3-25	64205-029	BLT-MET M12X1.75X40	4
3-26	64263-022	BLT-FLG HD M12-1.75 X 90	2
3-27	64205-060	BLT-MET M12-1.75X50	4
3-28	64221-04	E-RING .875	4
3-29	64237-03	LOCKNUT-NYLON M10-1.5	2
3-30	64265-06	NUT-FL NYL LOCK M12-1.75	2
3-31	64246-04	NUT-WHIZ M12-1.75	16
3-32	64265-05	NUT-FL NYL LOCK M10-1.5	15
3-33	64263-013	BLT-FLG HD M10-1.5 X 30	15

ITEM	PART NO.	DESCRIPTION	QTY
------	----------	-------------	-----



FIGURE 4





# BZT 2200D Series

2721545-04

## DECALS

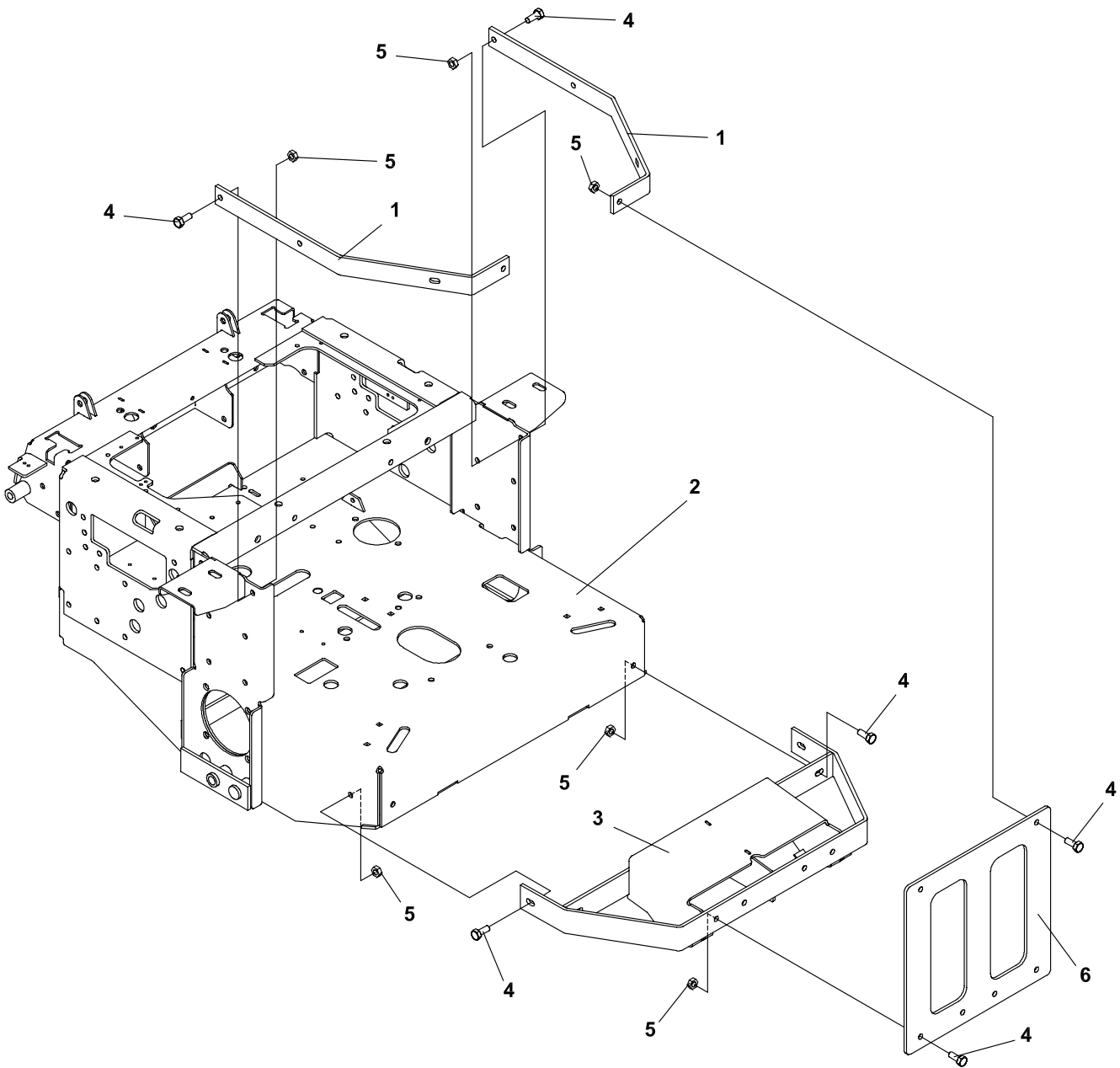
FIGURE 4

ITEM	PART NO.	DESCRIPTION	QTY	ITEM	PART NO.	DESCRIPTION	QTY
4-1	2721992	LABEL-BUNTONSTRP	1				
4-2	2721886	LABEL-BUNTON TEXTRON	1				
4-3	2000735	LABEL-OPER MAN	1				
4-4	2000590	LABEL, WARN BATTERY	1				
4-5	2000691	LABEL - HYDR OIL FILL	1				
4-6	2721061	LABEL-CONTROL PANEL	1				
4-7	2000693	LABEL - PARK BRAKE	1				
4-8	2000698	LABEL(DBL) - FUEL/LEAKS	2				
4-9	2000705	LABEL-TIRES	1				
4-10	2000700	LABEL - RH TRACTION	1				
4-11	2000701	LABEL - LH TRACTION	1				
4-12	2000790	LABEL-INSIDE HOC	1				
4-13	2000791	LABEL-OUTSDHOC	1				
4-14	2000695	LABEL - WARN/USING	1				
4-15	2721607	LABEL-FUEL	1				
4-16	2721099	LABEL-FUSE	1				
4-17	365956	LABEL-RADIATOR	1				
4-18	2721418	LABEL-BZT 2200D DIE CUT	1				
4-19	340830	DECAL, CAUTION	1				

**BUMPER**

**FIGURE 5**

**BZT  
2200D  
Series**







# BZT 2200D Series

2721545-05

## BUMPER

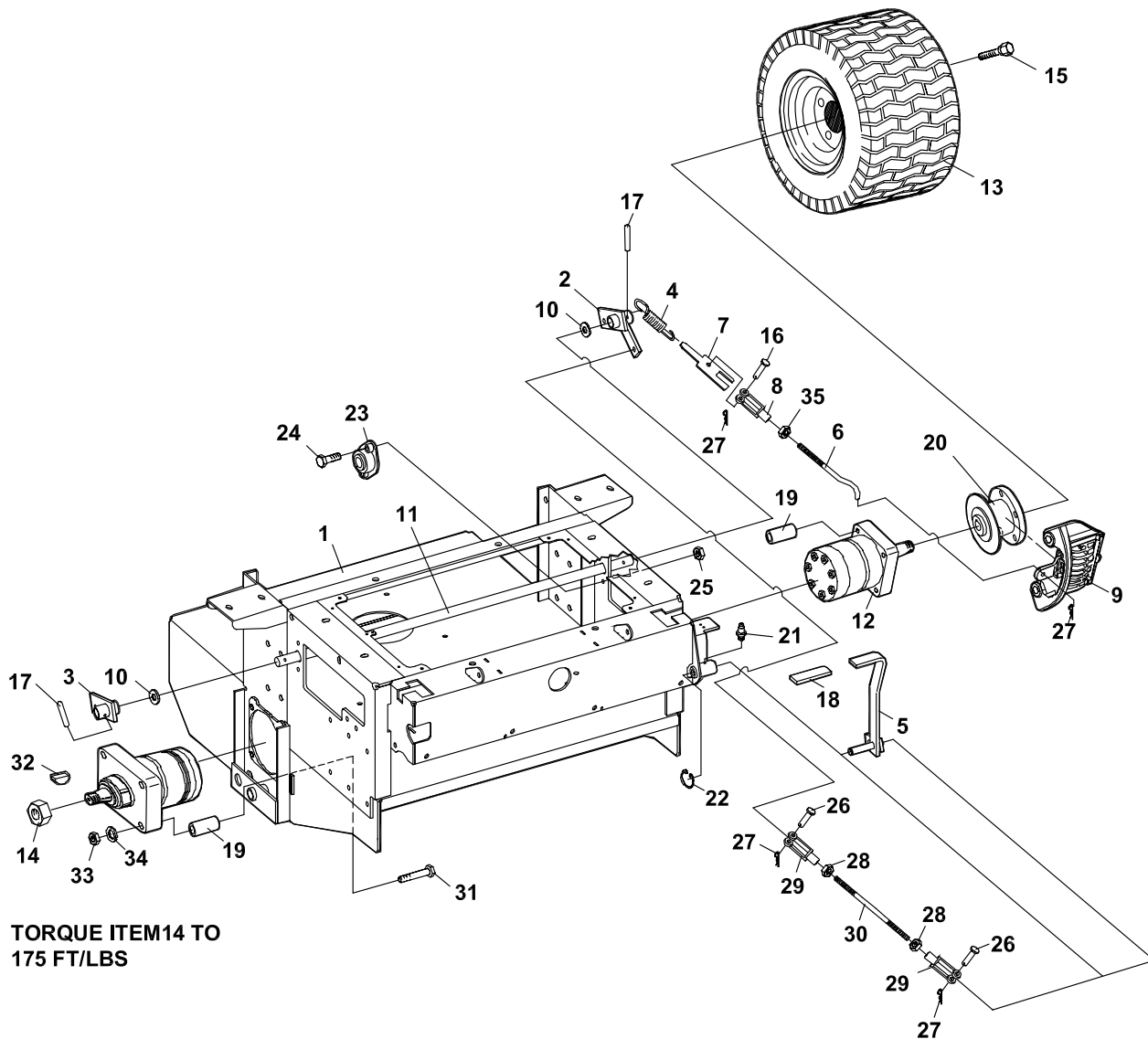
FIGURE 5

ITEM	PART NO.	DESCRIPTION	QTY
5-1	2722296.7	BUMPER-UPPER	2
5-2	2720997	S-ENG DECK W/LABS	1
5-3	2721324.7	WLDMT-BUMPER	1
5-4	64263-013	BLT-MET M10-1.5 X 30	10
5-5	64265-05	NUT-FL NYL LOCK M10-1.5	10
5-6	2721932.7	BRACE-VERTICAL	1

ITEM	PART NO.	DESCRIPTION	QTY
------	----------	-------------	-----



FIGURE 6





# BZT 2200D Series

2721545-06

## BRAKES/REAR WHEEL

FIGURE 6

ITEM	PART NO.	DESCRIPTION	QTY	ITEM	PART NO.	DESCRIPTION	QTY
6-1	2720996	S ENGINE DECK WLABS	1	6-21	85010N	STRAIGHT ZERK FITTING	1
6-2	2186128.7	WLDMT-BRAKE ARM LH	1	6-22	64144-34	SNAP RING .50	1
6-3	2186142.7	WLDMT-BRAKE ARM RH	1	6-23	2188145	BRG-.75ID BRNZ SLF ALIGN	2
6-4	128102	SPRING-EXTENSION	2	6-24	64123-15	BLT-HEX 3/8-16X3/4	4
6-5	2186143.7	WLDMT-BRAKE ARM LVR	1	6-25	64141-4	NUT-WLF 3/8-16	4
6-6	33213	ROD-SPD CTRL LH UPPER	2	6-26	64188-03	S PIN CLEVIS 3/8X1 1/8	2
6-7	2182387.7	GUIDE-SPRING	2	6-27	64168-2	HAIRPIN COTTER	6
6-8	38020N	CLEVIS-YOKE PLATE	2	6-28	64025-04	NUT-HEX 3/8-24	2
6-9	2188147	ASSY BRAKE CW (LH)	1	6-29	38020-01	CLEVIS YOKE 3/8 PLATE	2
	* 2188148	ASSY BRAKE CCW (RH)	1	6-30	2183064	ROD, BRAKE	1
6-10	64163-06	WSHR-.768-.756 IDX14 GA	2	6-31	450767	CAPSCRW M12-1.75X110	8
6-11	2183056	SHAFT-BRAKE	1	6-32	64164-08	S-KEY / WHEEL MOTOR	2
6-12	2188126-01	MOTOR-ASSY HYDRAULIC (INCLUDES ITEMS 14 & 32)	2	6-33	64207-07	NUT-HEX M12-1.75	8
				6-34	64006-05	LOCKWASHSR-HELICAL 1/2	8
				6-35	64025-03	NUT-HEX 5/16-24	2
6-13	2198156-01	RIM ASSY W/VALVE STEM	2	<b>SERVICE PARTS FOR 2188147 AND 2188148</b>			
	2198156-02	TIRE 23 X 10.5 X 12 (USE WITH 52" CUTTERDECKS)	2	<b>BRAKE ASSEMBLIES</b>			<b>QTY/ASSY</b>
	2722001-01	RIM ASSY W/VALVE STEM	2	2188147-01	BRACKET-MACHINED		1
	1985085-02	TIRE-24 X 12.0 X 12 (USE WITH 61" CUTTERDECKS)	2	2188147-02	PAD-CAM SIDE		1
6-14	64025-31	NUT1-20 UNSLOTTED TRW	2	2188147-03	PAD-SUPPORT		1
6-15	64220-02	BOLT-WHEEL 7/16-20	10	2188147-04	SPRING-LEVER RETAINER		1
6-16	64188-02	PIN-CLEVIS 5/16X1	2	2188147-05	HOUSING		1
6-17	64061-25	ROLL-PIN 1/4X1 1/4	2	2188147-06	CAM LH		1
6-18	2188155	GRIP, 1/4X1X4 1/2	1	2188147-07	PIVOT PIN		1
6-19	2183063-01	SPACER, 32MM LONG	8	2188147-08	PAD-CARRIER SIDE		1
6-20	2188149	HUB-WHL & DISC	2	2188147-09	PAD-SUPPORT		1
				2188148-01	*CAM RH		1

\* NOT ILLUSTRATED

### BRAKE ASSEMBLY BREAKDOWN

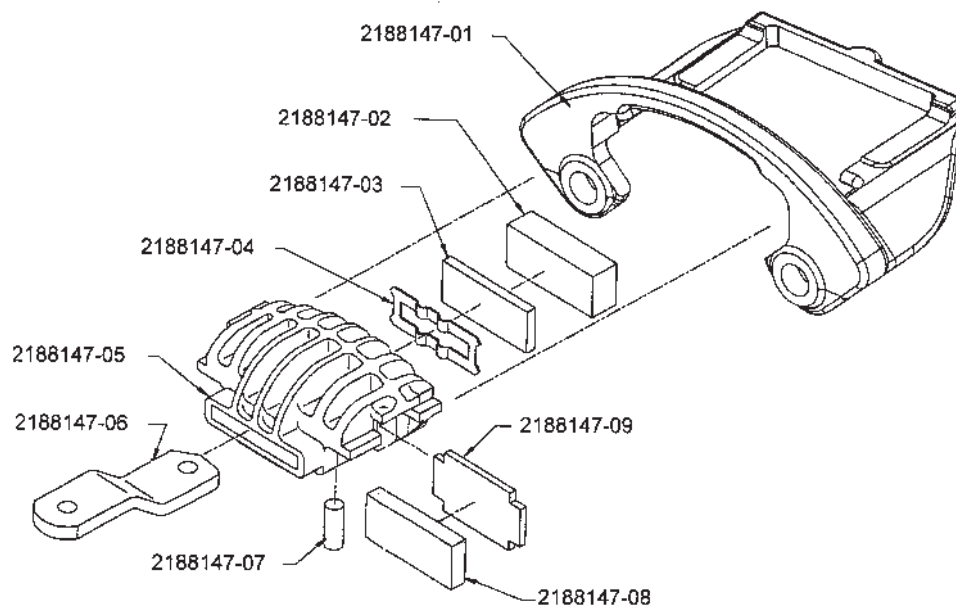
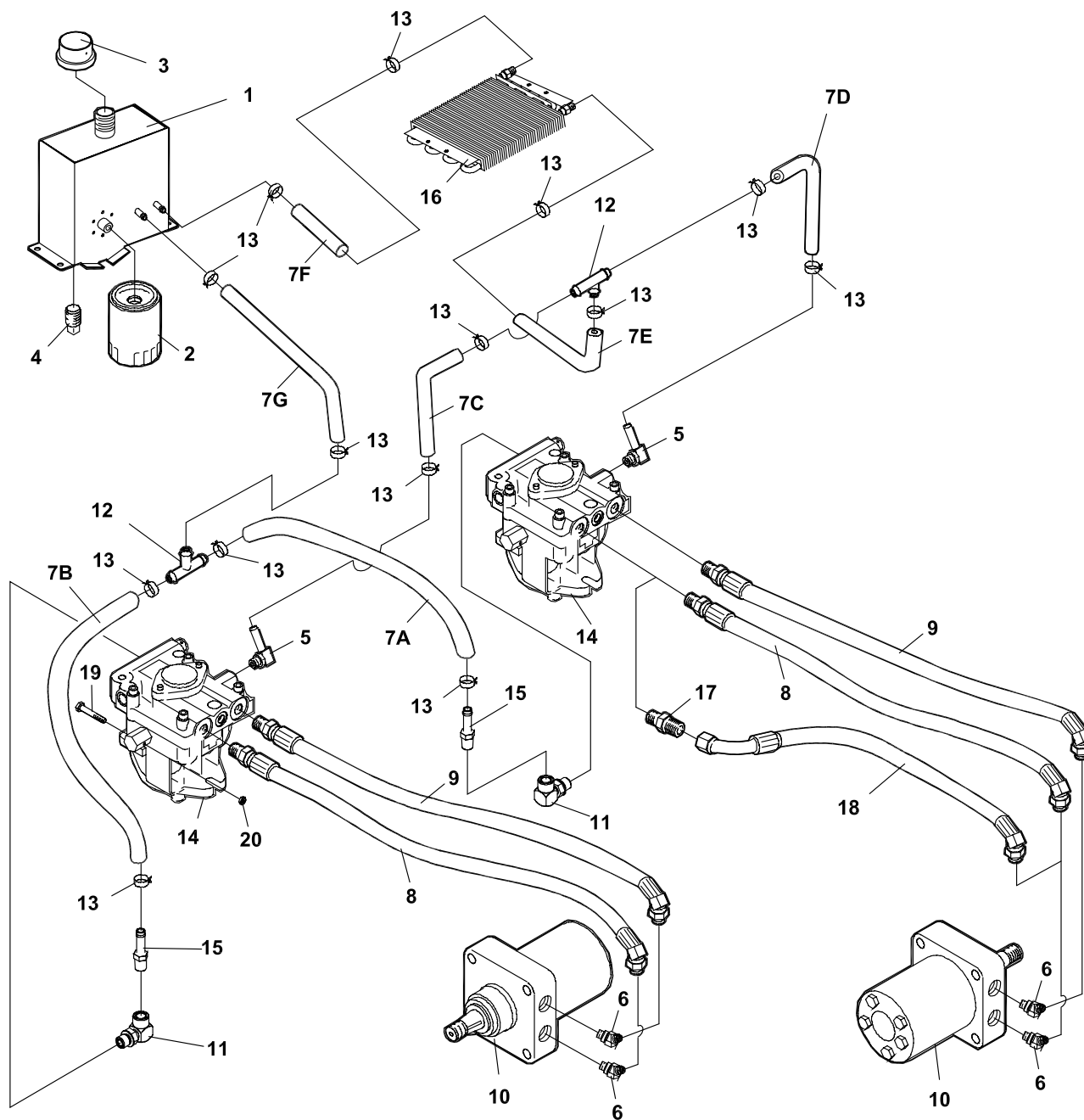




FIGURE 7





# BZT 2200D Series

2722087-07

## HYDRAULICS

FIGURE 7

ITEM	PART NO.	DESCRIPTION	QTY
7-1	2186211	S HYD RESERVOIR W/LAB	1
7-2	2720396	FILTER 25 MICRON	1
7-3	69216.7	CAP-RESERVOIR	1
7-4	108029	PLUG-MAGNETIC	1
7-5	158058-04	FTG-90 BRB 9/16-18X.38	2
7-6	108205-03	ELBOW-MALE 45 37-ORB	4
(69053-05 IS A SERVICEABLE LENGTH OF 55")			
7-7A	69053-05	3/8 HIGH TEMP HSE 18"	1
7-7B	69053-05	3/8 HIGH TEMP HSE 15"	1
7-7C	69053-05	3/8 HIGH TEMP HSE 19"	1
7-7D	69053-05	3/8 HIGH TEMP HSE 12"	1
7-7E	69053-05	3/8 HIGH TEMP HSE 22"	1
7-7F	69053-05	3/8 HIGH TEMP HSE 26"	1
7-7G	69053-05	3/8 HIGH TEMP HSE 5"	1
7-8	2188157-01	HOSE HYD ORB 37-22.38 (QTY OF 1 FOR KAWASAKI ENGINE)	2
7-9	2188157-02	HOSE HYD ORB 37-25.00	2
7-10	2188126-01	MOTOR-ASSY HYD	2
7-11	2690030-01	FTG 9/16-18 ORB X 3/8	2
7-12	58026-01	3 WAY CONNECTOR 3/8	2
7-13	88042-04	CLAMP-HOSE 5/8	14
7-14	2721615	PUMP-HYDRO	2
7-15	48386-04	FITTING-3/8 BARB 1/4	2
7-16	2188173	OIL COOLER	1
7-17	48089-03	FTG-STRGHT 8 ORB X 8 JIC	1
7-18	2720320-01	HOSE-1/2 37/45 37 26.25 (ITEMS 17&18 FOR KAWASAKI ENG ONLY)	1
7-19	64123-60	BOLT, 1/4-20X2 HEX	2
7-20	64229-01	LOCKNUT-NYL 1/4-20	2

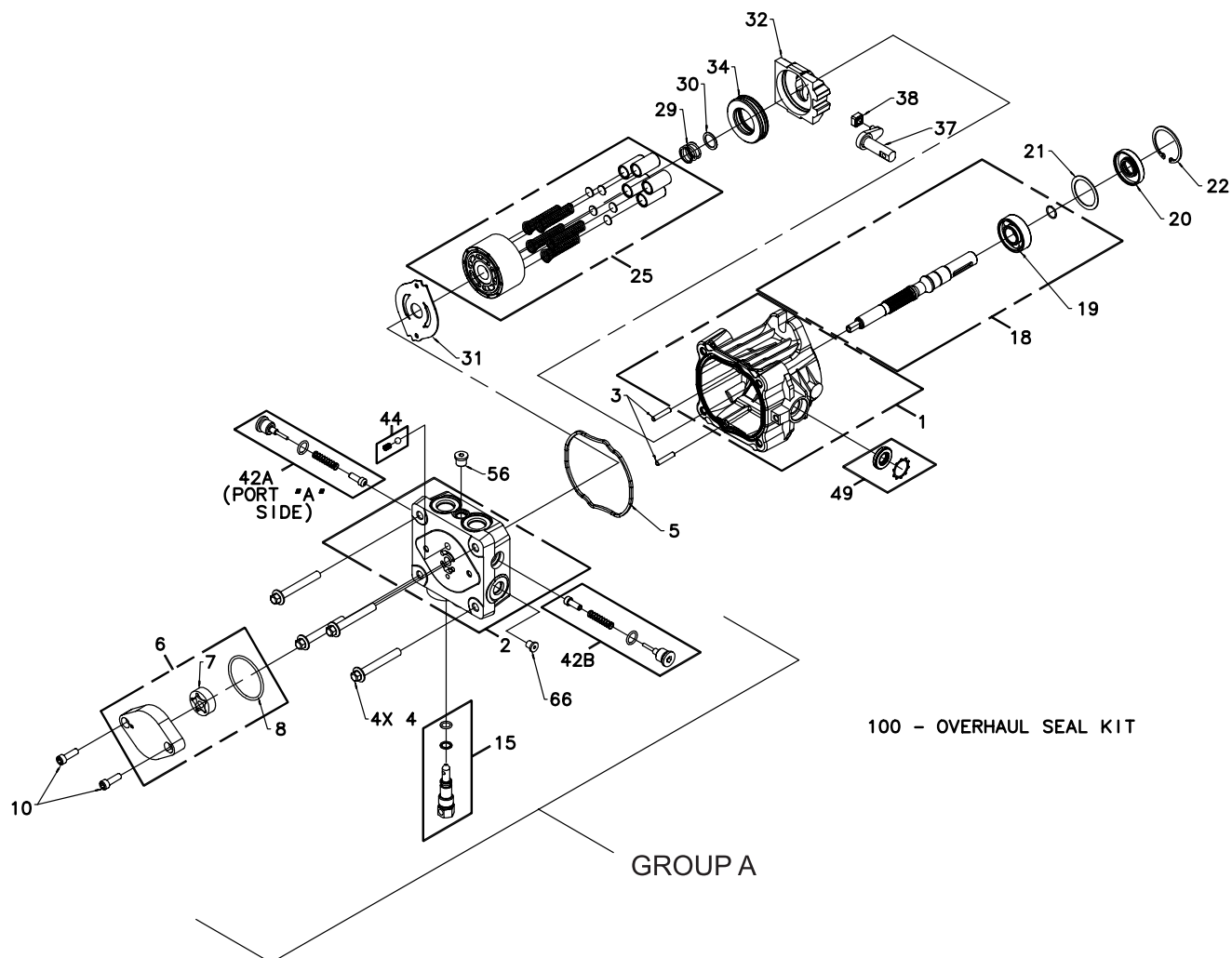
SAE PORT 'O' RING		
PART NUMBER	THREAD SIZE	AS-568#
158061-10	9/16-18	-906
158061-11	3/4-16	-908
158061-12	7/8-14	-910
158061-13	1-1/16-12	-912
158061-14	1-5/16-12	-916
158061-16	1-5/8-12	-920
158061-03	1-7/8-12	-924

# HYDROGEAR PUMP

**BZT  
2200D  
Series**



**FIGURE 8**





# BZT 2200D Series

2722087-08

## HYDROGEAR PUMP

FIGURE 8

2721615 PUMP-HYDRO RH ILLUSTRATED AS SHOWN EXCEPT GROUP A IS ROTATED 180°  
AROUND THE CENTERLINE OF THE PUMP.

ITEM	HYDROGEAR PART NO.	TEXTRON PART NO.	DESCRIPTION	QTY
8-1	70516	----	HOUSING KIT	1
8-2	70517	----	END CAP KIT	1
8-3	50641	----	STRAIGHT HEADLESS PIN	2
8-4	50969	2721615-01	FLANGE BOLT M8-1.25 X 60	4
8-5	51232	2721615-02	HOUSING O-RING	1
8-6	2513027	38345-06	CHARGE PUMP KIT	1
8-7	50273	38345-07	STD GEROTOR ASSEMBLY	1
8-8	9004101-1340	38345-08	O-RING	1
8-10	50095	38345-10	SOCKET SCREW M6-1.0 X 20	2
8-15	2513030	----	BYPASS VALVE KIT (BLANK)	1
8-18	70521	2721615-07	PUMP SHAFT KIT	1
8-19	50315	----	BALL BEARING 17 X 40 X 12	1
8-20	51161	----	LIP SEAL 17 x 40 x 12	1
8-21	50951	----	SPACER	1
8-22	50329	----	RETAINING RING	1
8-25	70331	38345-12	CYLINDER BLOCK KIT	1
8-29	2003014	----	BLOCK SPRING	1
8-30	2003017	----	BLOCK THRUST WASHER	1
8-31	51246	2721615-09	VALVE PLATE	1
8-32	2003087	188059-11	SWASH PLATE	1
8-34	50551	2721615-11	BALL THRUST BEARING	1
8-37	2003005	188059-15	ARM-TRUNNION	1
8-38	2000015	2721615-13	SLOT GUIDE	1
8-42A	2510027	2721615-14	CHECK VALVE KIT (.031")	1
8-42B	2510050	2721615-15	CHECK VALVE KIT (BLANK)	1
8-44	70403	2721615-16	CHARGE RELIEF VALVE KIT	1
8-49	2513043	2721615-17	TRUNNION SEAL/RETAINER KIT	1
8-56	9005110-4400	----	STRAIGHT THREAD PLUG	1
8-66	9005110-3100	----	5/16 SAE PLUG	1
8-100	70525	2721615-18	OVERHAUL SEAL KIT	1



# YANMAR WIRE HARNESS

**BZT  
2200D  
Series**



**FIGURE 9**

2721545-09

ITEM	PART NO.	DESCRIPTION	QTY	ITEM	PART NO.	DESCRIPTION	QTY
9-1	2720866	HARNESS-WIRING (INCLUDES ITEMS 2, 19, 20 & 21)	1				
9-2	148082-20	FUSE-20 AMP	1				
9-3	2722287-01	CABLE-BATTERY POSITIVE	1				
9-4	158135-01	SWITCH-SEAT NO	1				
9-5	158136	WIRE-SEAT SWITCH	1				
9-6	48030N	HOUR METER ASSY	1				
9-7	2198092	CABLE-GROUND	1				
9-8	2721126	KEY-SWITCH W/BEZEL	1				
9-9	2722325	RELAY-40 AMP SEALED	8				
9-10	2188154	MODULE-DELAY	1				
9-11	2188153	SWITCH-CLUTCH	1				
9-12	2721337	CLUTCH (INCLUDES ITEM 22)	1				
9-13	2188172	HARNESS-JUMPER	2				
9-14	108208	SWITCH-DBL POLE	3				
9-15	2720886	TEMP-GAUGE	1				
9-16	2720887	TEMP-SENDER	1				
9-17	2721894	CLUSTER-WARNING LIGHT	1				
9-18	48524	CIRCUIT BREAKER	1				
9-19	148082-10	FUSE-10 AMP	1				
9-20	148082-30	FUSE-30 AMP	1				
9-21	1003416	DIODE	4				
9-22	2720949	WIRE-ASSEMBLY CLUTCH	1				
9-23	38382	SWITCH-NO	1				
		(ITEMS 24 & 25 AVAILABLE THROUGH YANMAR DEALER)					
9-24		FUEL PUMP	1				
9-25		TIMER	1				
9-26	2721815	SWITCH-LIGHT	1				
9-27	2721814	SWITCH-DECK HEIGHT	1				
9-28	2721903	HARNESS-CONTROL PNL	1				
9-29	3010329	LAMP-FLOOD 12V	1				

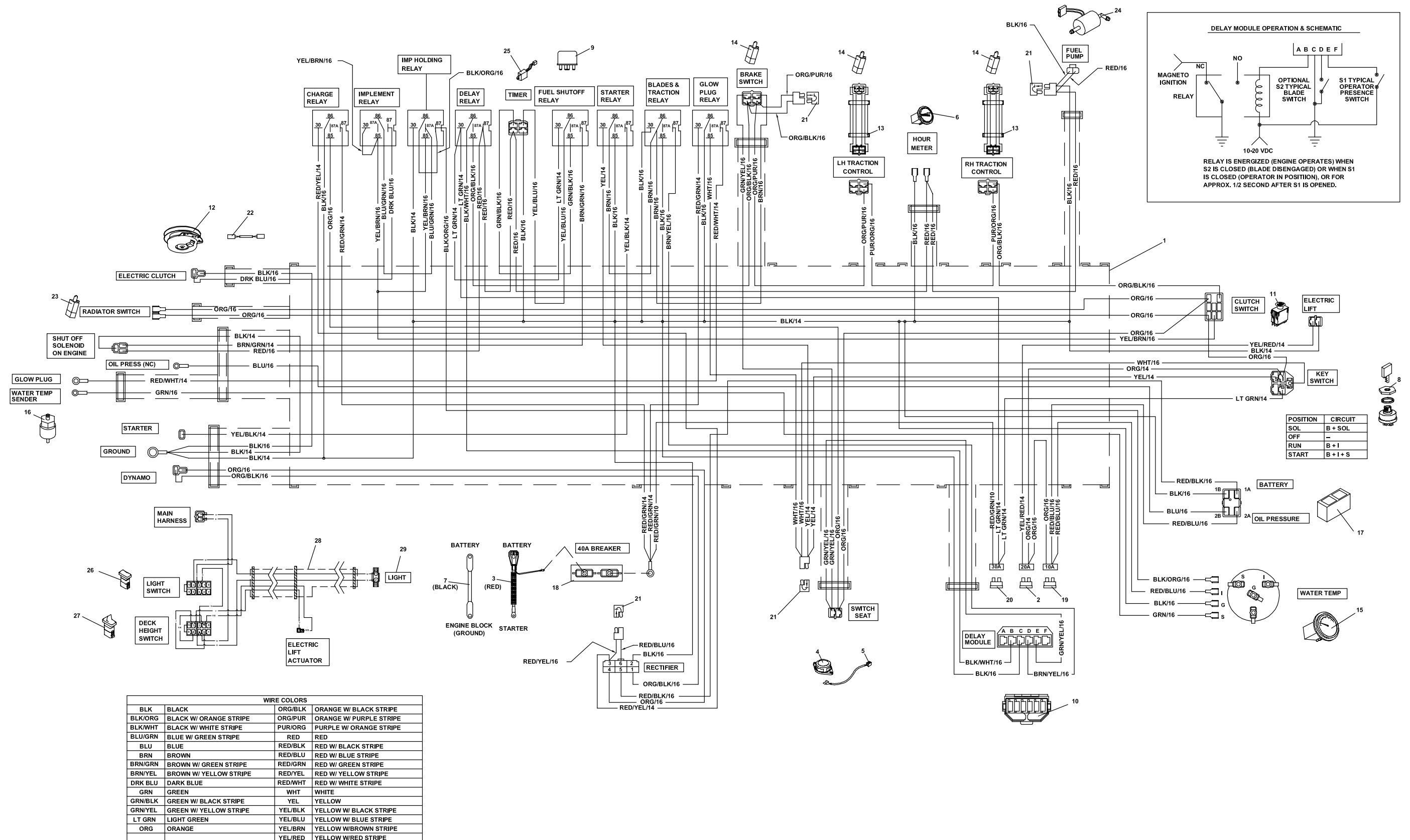


# BZT 2200D Series

2721545-09

## YANMAR WIRE HARNESS

FIGURE 9

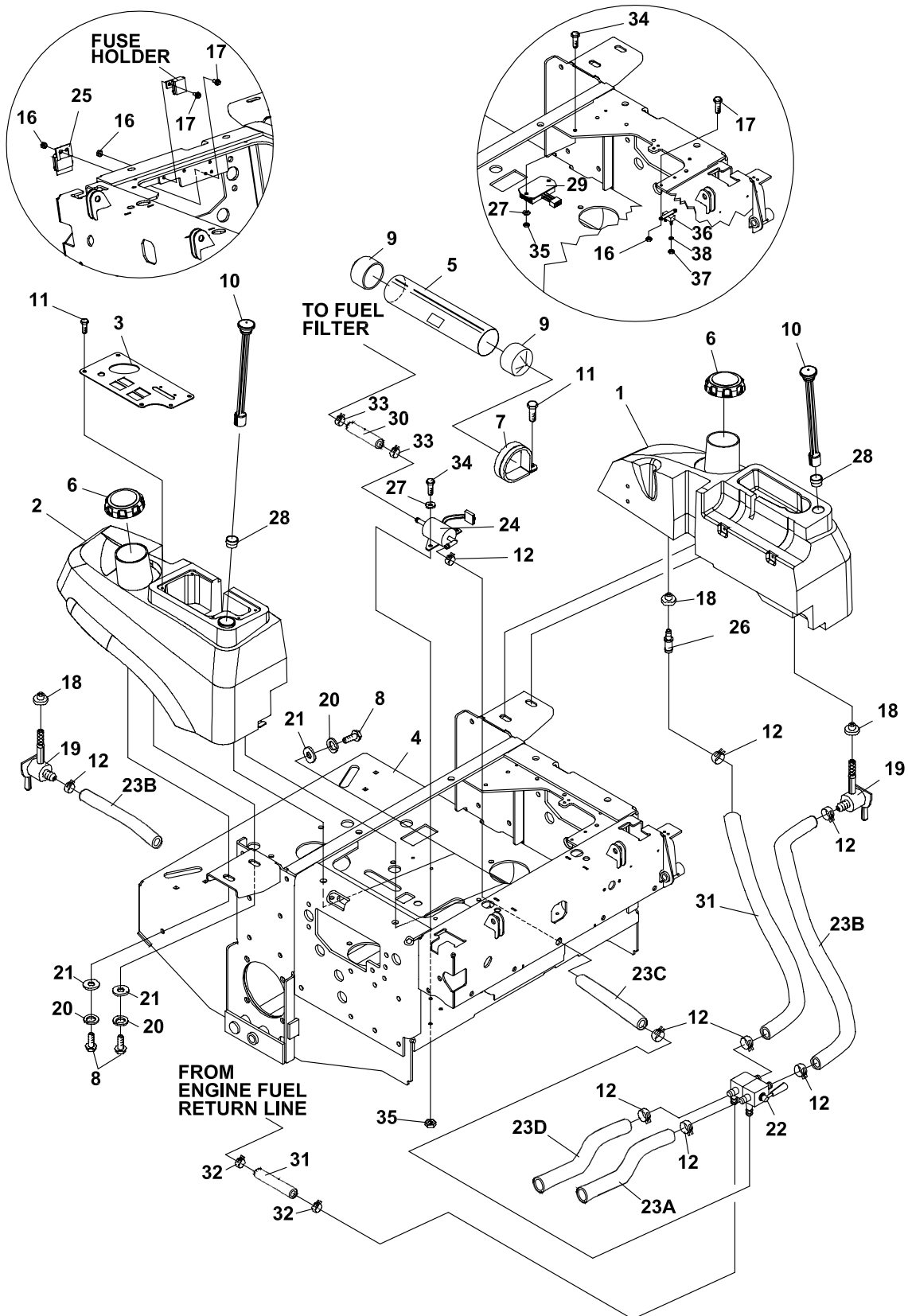


# FUEL TANKS/CONTROL PANEL

**BZT  
2200D  
Series**



**FIGURE 10**





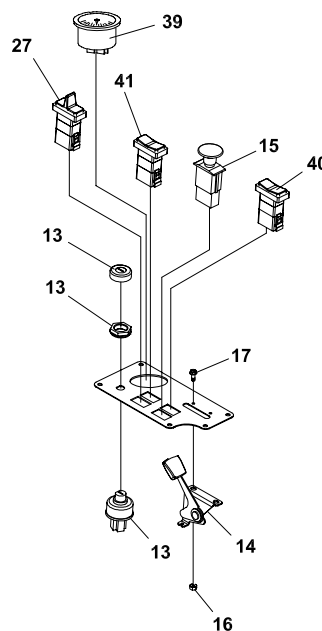
# BZT 2200D Series

## FUEL TANKS/CONTROL PANEL

2721545-10

FIGURE 10

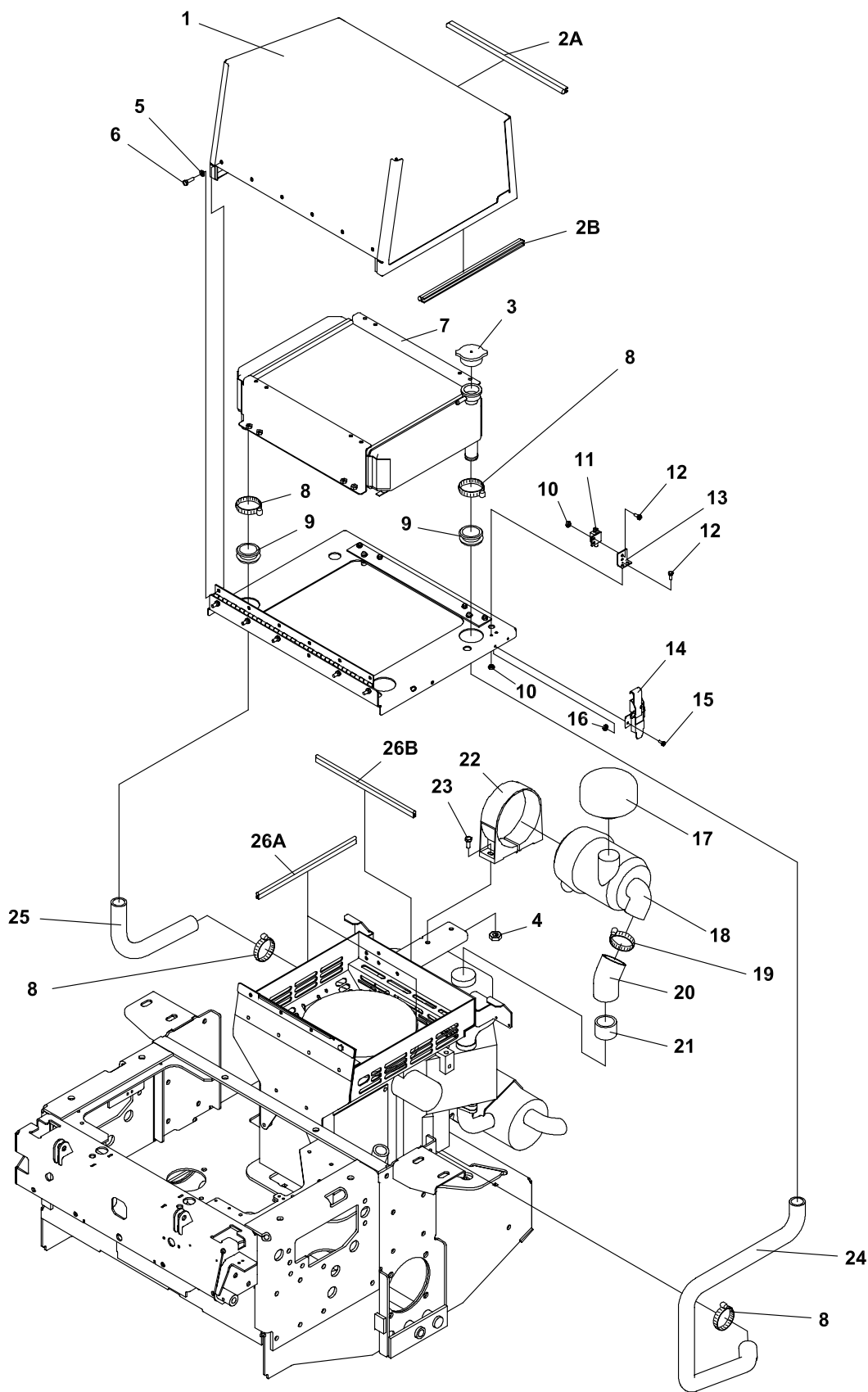
ITEM	PART NO.	DESCRIPTION	QTY	ITEM	PART NO.	DESCRIPTION	QTY
10-1	2722247	S-LH FUEL TANK W/RET (INCLUDES ITEMS 10,18,19,26 & 28)	1	10-23B	48016-17	HOSE 1/4IDX1/2OD X 22"	1
10-2	2722248	S-RH FUEL TANK W/RET (INCLUDES ITEMS 10,18,19,26 & 28)	1	10-23C	48016-17	HOSE 1/4IDX1/2OD X 18"	1
10-3	2721029	S-CONTROL PANEL W/LAB	1	10-23D	48016-17	HOSE-1/4IDX1/2OD X 36"	2
10-4	2720997	S-ENG DECK W/LABS	1	10-24		FUEL PUMP (AVAILABLE THROUGH YANMAR DEALER)	1
10-5	2206184	S-DOC TUBE W/LABS	1	10-25	2188154	MODULE-DELAY	1
10-6	2721806	CAP-FUEL TANK	2	10-26	2722090	FTG-FUEL 1/4 STRAIGHT	2
10-7	38542	CLAMP-DOC TUBE	2	10-27	2721815	SWITCH-LIGHT	1
10-8	64205-007	BLT-MET M10-1.5 X 20	8	10-28	2218147	GROMMET-GAUGE	2
10-9	38061A	SPINDLE-SHIELD	2	10-29		RECTIFIER (AVAILABLE THROUGH YANMAR DEALER)	1
10-10	2721945	S-REMOTE FUEL GAUGE	2	10-30	148263-10	HOSE-FUEL 5/16-27.0"	1
10-11	64263-001	BLT-FLG HD M6-1.0 X 12	7	10-31	148264-10	HOSE-FUEL 3/16-42.0"	1
10-12	88042N	HOSE CLAMP	10	10-32	88042-01	CLAMP-HOSE 3/16	2
10-13	2721126	KEYSWITCH ASSY (INCLUDES KEYS, BEZEL, NUT & WSHR)	1	10-33	88042-02	CLAMP-HOSE 5/16	2
10-14	118020-15	CONTROL-THROTTLE	1	10-34	64205-025	BLT-MET M6-1.00 X 25	4
10-15	2188153	SWITCH-CLUTCH	1	10-35	64237-02	LOCKNUT-NYLON M6-1.00	4
10-16	64025-15	NUT-HEX #10-24 KEPS	7	10-36	48524	CIRCUIT BREAKER (INCLUDES ITEM 38)	1
10-17	64152-46	SCR.-SLT HH #10-24 X 1/2	7	10-37	64025-14	NUT-HEX #10-32	2
10-18	48310	S-BUSHING, FUEL TANK	4	10-38	446118	LOCKWASHER-#10	2
10-19	38540	S-FUEL SHUTOFF VALVE	2	10-39	2721531	TEMPERATURE GAUGE	1
10-20	800488	LOCKWASHER M10	8	10-40	2721894	CLUSTER-WARNING LIGHT	1
10-21	64251-004	WASHER-M10	8	10-41	2721814	SWITCH-DECK HEIGHT	1
10-22	2721911	VALVE-TANK SELECTOR (48016-17 IS A SERVICEABLE LENGTH OF 68")	1				
10-23A	48016-17	HOSE 1/4IDX1/2OD X 28"	1				



# RADIATOR SCREEN & AIR FILTER

FIGURE 11

**BZT**  
**2200D**  
**Series**





# BZT 2200D Series

## RADIATOR SCREEN & AIR FILTER

2721543-11

FIGURE 11

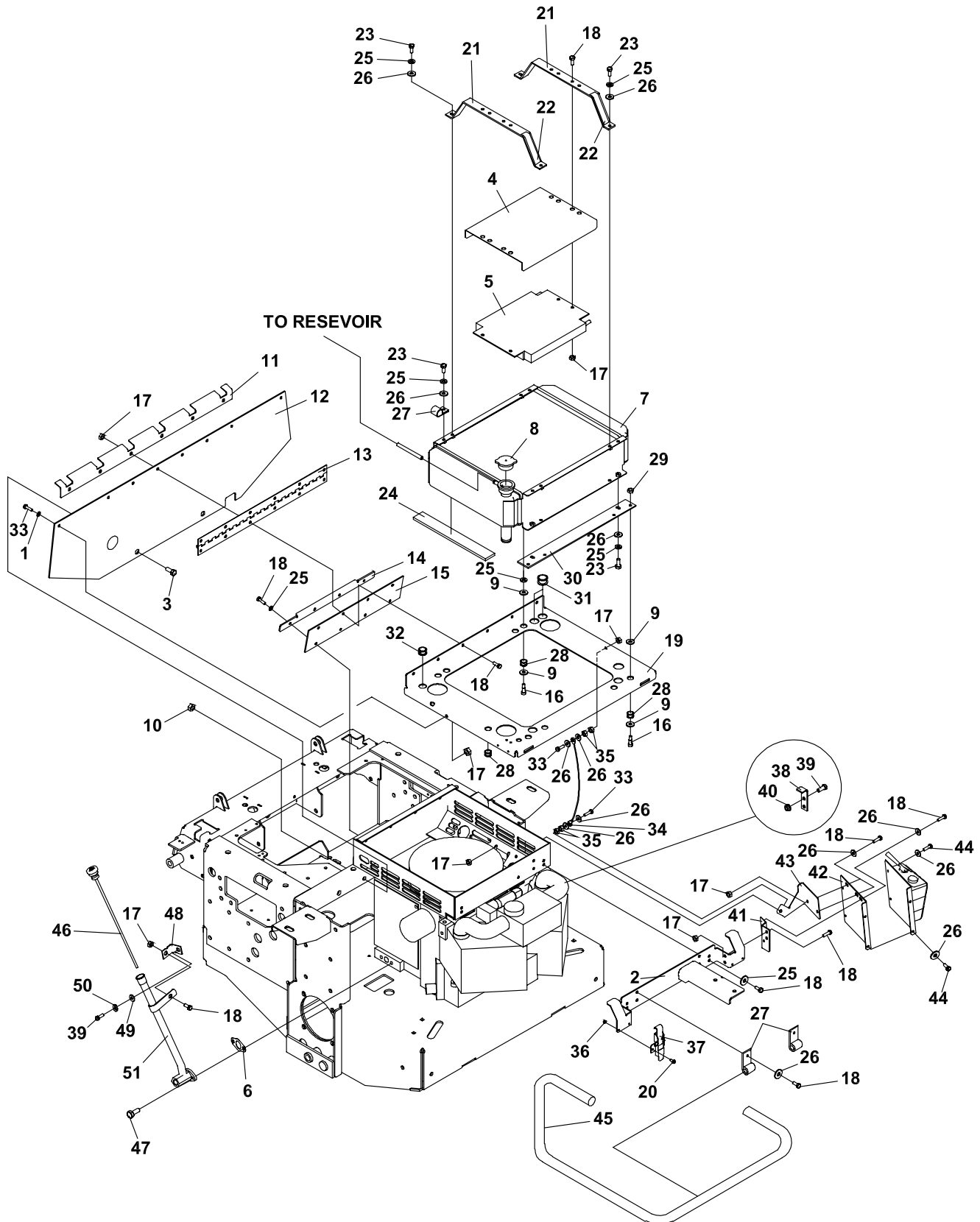
ITEM	PART NO.	DESCRIPTION	QTY	ITEM	PART NO.	DESCRIPTION	QTY
11-1	2720889.7	WLDMT-RAD SCREEN	1				
11-2A	108194-06	SEAL-FLEX TRIM 17.8"	1				
11-2B	108194-06	SEAL-FLEX TRIM 14.6"	2				
11-3	2198238-01	S-RADIATOR CAP	1				
11-4	64237-05	LOCKNUT-NYLON M8-1.25	2				
11-5	64006-01	LOCKWSHR-HELICAL 1/4	6				
11-6	A1102966	BOLT-M6-1.00 X 16	6				
11-7	2720870	RADIATOR	1				
11-8	108094-01	CLAMP-HOSE SAE20	4				
11-9	148034-10	GROMMET-2 X 1-1/2 X 3/8	2				
11-10	64025-15	NUT-HEX #10-24 KEPS	4				
11-11	38382	SWITCH-N.O.	1				
11-12	64152-46	SCR-SLT HH 10-24 X 1/2	4				
11-13	2721624	BRKT-RADIATOR SWITCH	1				
11-14	2218076	LATCH-OVER CENTER	2				
11-15	64152-20	8-32X1/2 MACH SCREW	4				
11-16	64025-29	NUT-HEX #8-32 KEPS	4				
11-17	2720885	PRECLEANER-AIR FILTER	1				
11-18	1985039	AIR CLEANER	1				
	1985039-01	S ELEMENT	1				
	1985039-02	S DUST VALVE	1				
	1985039-03	S COVER	1				
	1985039-04	S CLIP	1				
		(SUPPLIED WITH AIR CLEANER)					
11-19	48383	CLAMP-HOSE SAE32	1				
11-20	2721630	HOSE-AIR CLEANER	1				
11-21	364152	BUSHING-1.378X1.750X1.00	1				
11-22	2720022	BRACKET-AIR CLEANER	1				
11-23	64205-001	BLT-MET M8-1.25 X 20	2				
11-24	2720872	HOSE-RADIATOR LOWER	1				
11-25	2720871	HOSE-RADIATOR UPPER	1				
		(108194-13 IS A SERVICABLE LENGTH OF 41.0")					
11-26A	108194-13	FLEX TRIM 12.7"	2				
11-26B	108194-13	FLEX TRIM 10.8"	1				

# OIL COOLER & RADIATOR

**BZT  
2200D  
Series**



**FIGURE 12**







# BZT 2200D Series

## OIL COOLER & RADIATOR

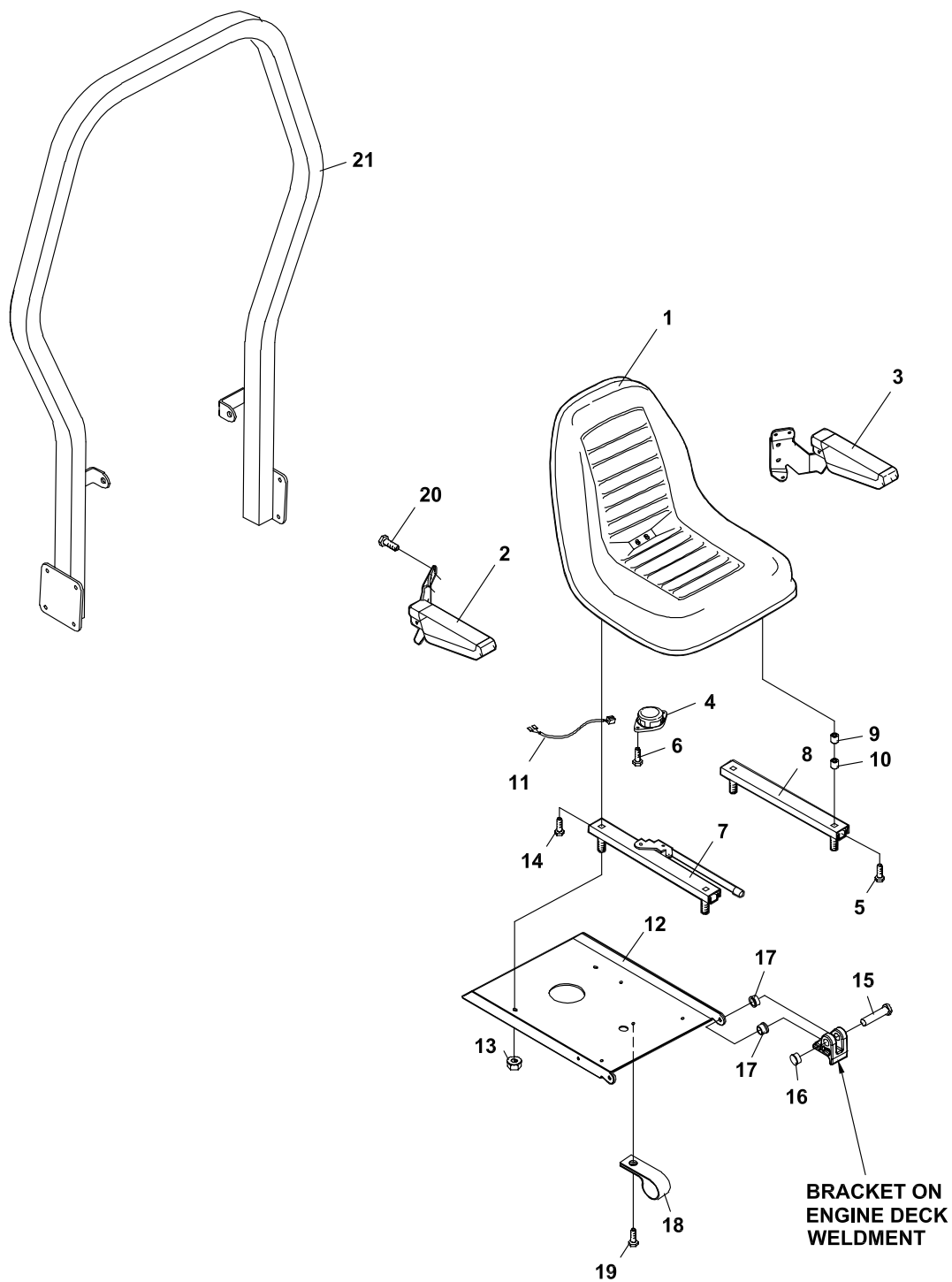
2721545-12

FIGURE 12

ITEM	PART NO.	DESCRIPTION	QTY	ITEM	PART NO.	DESCRIPTION	QTY
12-1	64163-34	WASHER	2	12-48	2721577	BRKT-HIGH OIL FILL	1
12-2	2721933.7	WLDMT-SUPPORT BRKT	1	12-49	64251-003	WHSR-M8	1
12-3	64263-013	BLT-FLG HD M10-1.5 X 30	2	12-50	64006-02	LOCKWSHR-HELICAL 5/16	1
12-4	2720891.7	SCREEN-OIL COOLER	1	12-51	970246	KIT-HIGH OIL FILL & DRAIN	1
12-5	2188173	COOLER-OIL	1			(INCLUDES ITEMS 17, 18 & 49-52)	
12-6	4113743	GASKET-OIL FILL	1			(DRAIN PLUG CAN BE OBTAINED	
12-7	2720870	RADIATOR	1			THRU YANMAR DEALER)	
		(INCLUDES ITEM 8)					
12-8	2198238-01	CAP-RADIATOR	1				
12-9	64163-55	WASHER	16				
12-10	64265-05	NUT-FL NYL LOCK M10-1.5	2				
12-11	2721914.7	PLATE-BACKING	1				
12-12	2722380	BARRIER-AIR FLOW	1				
12-13	2721646	HINGE-50.8 X 470	1				
12-14	2721355.7	STRAP-RADIATOR HINGE	1				
12-15	2721450	BELTING-HINGE	1				
12-16	64166-6	BLT-SHLDR 5/16 X 1/2 1/4-208					
12-17	64237-02	LOCKNUT-NYLON M6-1.00	20				
12-18	64205-038	BLT-MET M6-1.00 X 20	29				
12-19	2721570.7	PLATE-RADIATOR MTG	1				
12-20	64152-20	MACHINE SCREW 8-32 X 1/24					
12-21	2721803	S-COOLER BRKT W/ LABEL	2				
		(INCLUDES ITEM 22)					
12-22	365956	LABEL-WRNG RADIATOR	2				
12-23	64123-89	BLT-HEX 1/4-20 X 3/4	7				
12-24	48450-25	FOAM-2.0X 10.50 X 0.50	2				
12-25	64006-01	LOCKWSHR-HELICAL 1/4	20				
12-26	64163-03	WASHER-1/4	16				
12-27	48228A	CABLE CLIP-INSULATED	3				
12-28	148034-09	GROMMET-7/8 X 3/8 X 3/8	9				
12-29	64151-8	1/4-20 HEX LOCKNUT	4				
12-30	2721931.7	BRKT-RADIATOR SUPPORT	1				
12-31	148034-08	GROMMET 1.125OD 0.625ID	2				
12-32	148034-06	GROMMET 0.5 ID	1				
12-33	64205-025	BLT-MET M6-1.00 X 25	4				
12-34	2720882	LANYARD	1				
12-35	64207-06	NUT-HEX M6-1	4				
12-36	64025-29	NUT-HEX #8-32 KEPS	4				
12-37	2218076	LATCH-OVER CENTER	2				
12-38	2721604.7	BRKT-FUEL FILTER	1				
12-39	64205-001	BLT-MET M8-1.25X20	3				
12-40	64246-02	NUT-WLF M8-1.25	2				
12-41	2721579.7	BRKT-OVERFLOW TANK	1				
12-42	2721580.7	PLATE-OVERFLOW TANK	1				
12-43	2721578.7	BRKT-OVERFLOW TANK	1				
12-44	64152-23	1/4-20X3/8 LG SP SCREW	4				
12-45	2721576	TUBE-RAD OVERFLOW	1				
12-46	2720877	CAP WITH DIPSTICK	1				
12-47	64256-02	BLT-HEX M6-1.0X20	2				



FIGURE 13





# BZT 2200D Series

## SEAT ASSEMBLY & ROPS

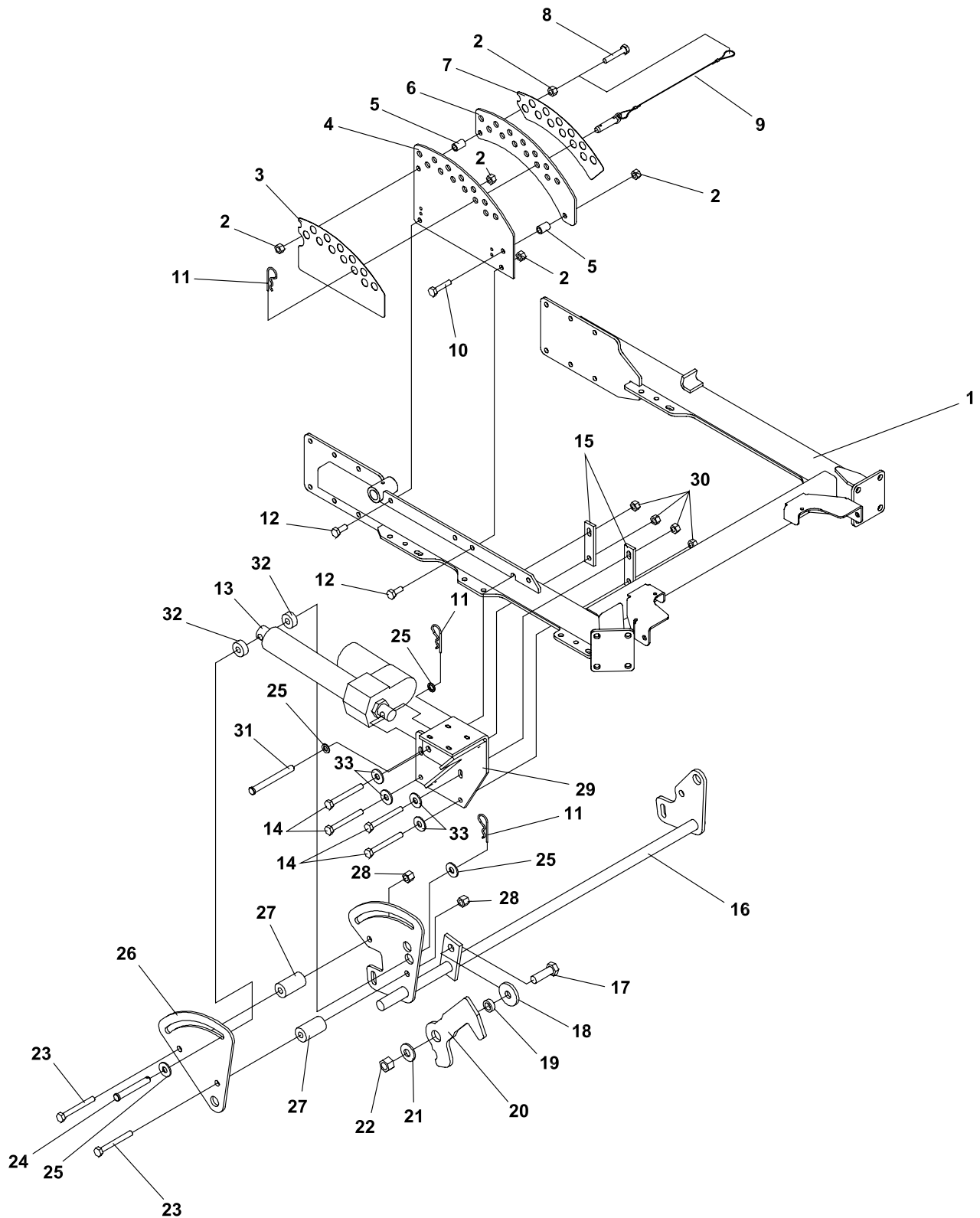
2187026

FIGURE 13

ITEM	PART NO.	DESCRIPTION	QTY	ITEM	PART NO.	DESCRIPTION	QTY
13-1	2720975	SEAT-SUSPENSION (INCLUDES ITEMS 2-10)	1				
	2720975-01	SEAT CUSHION	1				
	2720975-02	BACK CUSHION	1				
	2720975-05	CABLE ASSEMBLY (INTERNAL SEAT COMPONENT NOT ILLUSTRATED)	2				
	2720975-08	ASSY-SEAT BACK PANEL	1				
13-2	2721093	RH ARM REST	1				
13-3	2721094	LH ARM REST	1				
13-4	158135-01	SWITCH, SEAT NO	1				
13-5	64123-69	BLT-HEX 5/16-18X1-1/2	2				
13-6	64123-49	BLT-HEX 1/4-20X1/2	2				
13-7	2720975-04	SLIDE RAIL-ADJ	1				
13-8	2720975-03	SLIDE RAIL-SLAVE	1				
13-9	2720975-06	SPACER-NYLON 5/8"	2				
13-10	2720975-07	SPACER-NYLON 3/8"	4				
13-11	158136	WIRE-SEAT SWITCH	1				
13-12	2722427.7	PLATE-SEAT	1				
13-13	64141-6	NUT-WLF 5/16-18	4				
13-14	2198096	SCREW-CAP WSHR HD	4				
13-15	64188-39	PIN-CLEVIS3/8X1-3/8W/OHL	2				
13-16	64175-04	PUSHNUT 3/8 DIA	2				
13-17	38371-01	BRG-NYLINER 3/8	2				
13-18	48228A	CABLE CLIP-INSULATED	1				
13-19	64152-23	SCREW 1/4-20X3/8	1				
13-20	64139-16	BLT-WLF 5/16-18 X 3/4	6				
			</				



FIGURE 14





# BZT 2200D Series

## ELECTRIC DECK LIFT

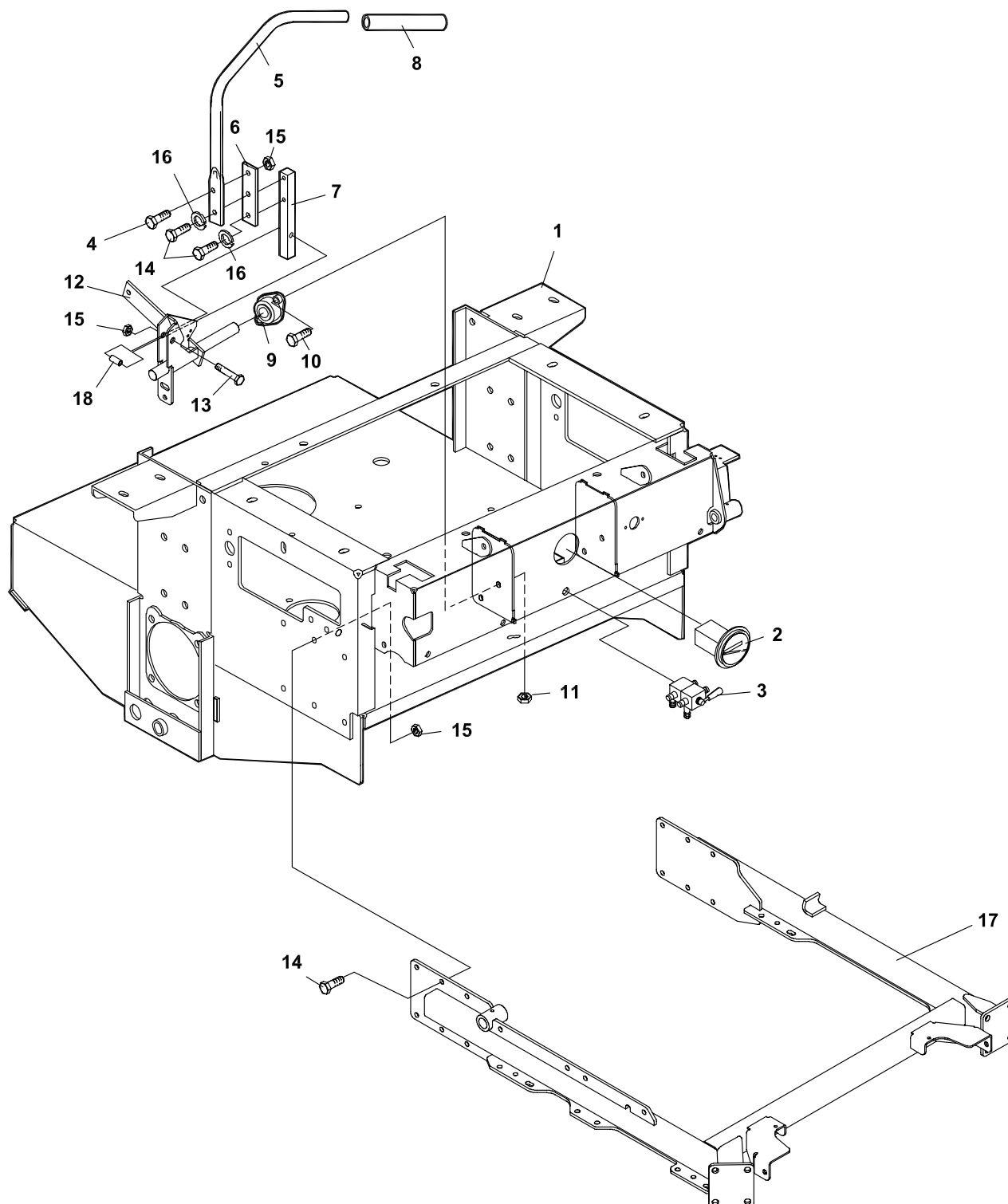
2722089-16

FIGURE 14

ITEM	PART NO.	DESCRIPTION	QTY	ITEM	PART NO.	DESCRIPTION	QTY
14-1	2722723.5	WLDMT-CRADLE	1				
14-2	64237-03	LOCKNUT-NYLN M10-1.5	5				
14-3	2000791	LBL-OUTSIDE HOC	1				
14-4	2182523.7	PLATE-HEIGHT ADJ OUTER	1				
14-5	2183071-03	SPACER	2				
14-6	2182524.7	PLATE-HEIGHT ADJ INNER	1				
14-7	2000790	LABEL-INNER HOC	1				
14-8	64205-008	BLT-MET M10-1.50X55	1				
14-9	2188141	ASSY, PIN & LANYARD	1				
14-10	64205-034	BLT-MET M10-1.50X45	1				
14-11	64168-1	PIN-COTTER .120X2-3/8	3				
14-12	A1104057	BLT-MET M10-1.5X25	2				
14-13	2720642	ACTUATOR-LINEAR 12VDC	1				
14-14	64205-009	BLT-MET M10-1.5X65	4				
14-15	2721644.7	PLATE-BOLT	2				
14-16	2722614.5	WLDMT-ELECTRIC LIFT	1				
14-17	64205-055	BLT-MET M16-2.0 X 50	1				
14-18	64163-78	WASHER-.635 X 2.00	1				
14-19	2183084	SPACER-16.25X50.8X8.5LG	1				
14-20	2182522.7	LEVER-DECKLIFT	1				
14-21	64209-03	SPRING WASHER .67 ID	1				
14-22	64237-04	LOCKNUT-NYLON M16-2.0	1				
14-23	64263-022	BLT-FLG HD M12-1.75 X 90	2				
14-24	64188-40	PIN, CLEVIS 1/2 X 3-1/2	1				
14-25	64163-19	WASHER-33/64X1-1/4X12GA	4				
14-26	4112962.5	PLATE-DECKLIFT ELECT	1				
14-27	2183077	SPACER-DECKLIFT	2				
14-28	64265-06	NUT-FL NYL LOCK M12-1.75	2				
14-29	2721645.7	WLDMT-EL LIFT MTG BRKT	1				
14-30	64265-05	NUT-FL NYL LOCK M10-1.5	4				
14-31	64188-43	PIN-CLEVIS	1				
14-32	2188227	SPACER 1.25 X 0.50 X 0.52	2				
14-33	64251-004	WHSR-M10	4				



FIGURE 15





# BZT 2200D Series

## STEERING/INSTRUMENTS

2721545-15

FIGURE 15

ITEM	PART NO.	DESCRIPTION	QTY	ITEM	PART NO.	DESCRIPTION	QTY
15-1	2720997	S ENGINE DECK W/LABS	1				
15-2	48030N	HOUR METER ASSY	1				
15-3	2721911	VALVE-DUAL FUEL SELECT	1				
15-4	A1104057	BOLT-M10-1.50X25	2				
15-5	2182344.7	LEVER-CONTROL	2				
15-6	2182434.7	BRKT-TRACTION LEVER	2				
15-7	2183074	BRACKET-HANDLE	2				
15-8	2188144	GRIP-.75 IDX12	2				
15-9	2188145	BEARING-SELF ALIGNED	4				
15-10	64123-15	BLT-HEX 3/8-16X3/4	8				
15-11	64141-4	NUT-WLF 3/8-16	8				
15-12	4112105.7	WLDMT-MTN CTRL RH	1				
	* 4112104.7	WLDMT-MTN CTRL LH	1				
15-13	64205-011	BLT-MET M10-1.5X40	2				
15-14	A110406	BLT-MET M10-1.5X30	16				
15-15	64237-03	LOCKNUT-NYLON M10-1.5	16				
15-16	800488	LOCKWASHER-M10	4				
15-17	2722723.5	WLDMT-CRADLE	1				
15-18	2183073	SPACER	2				

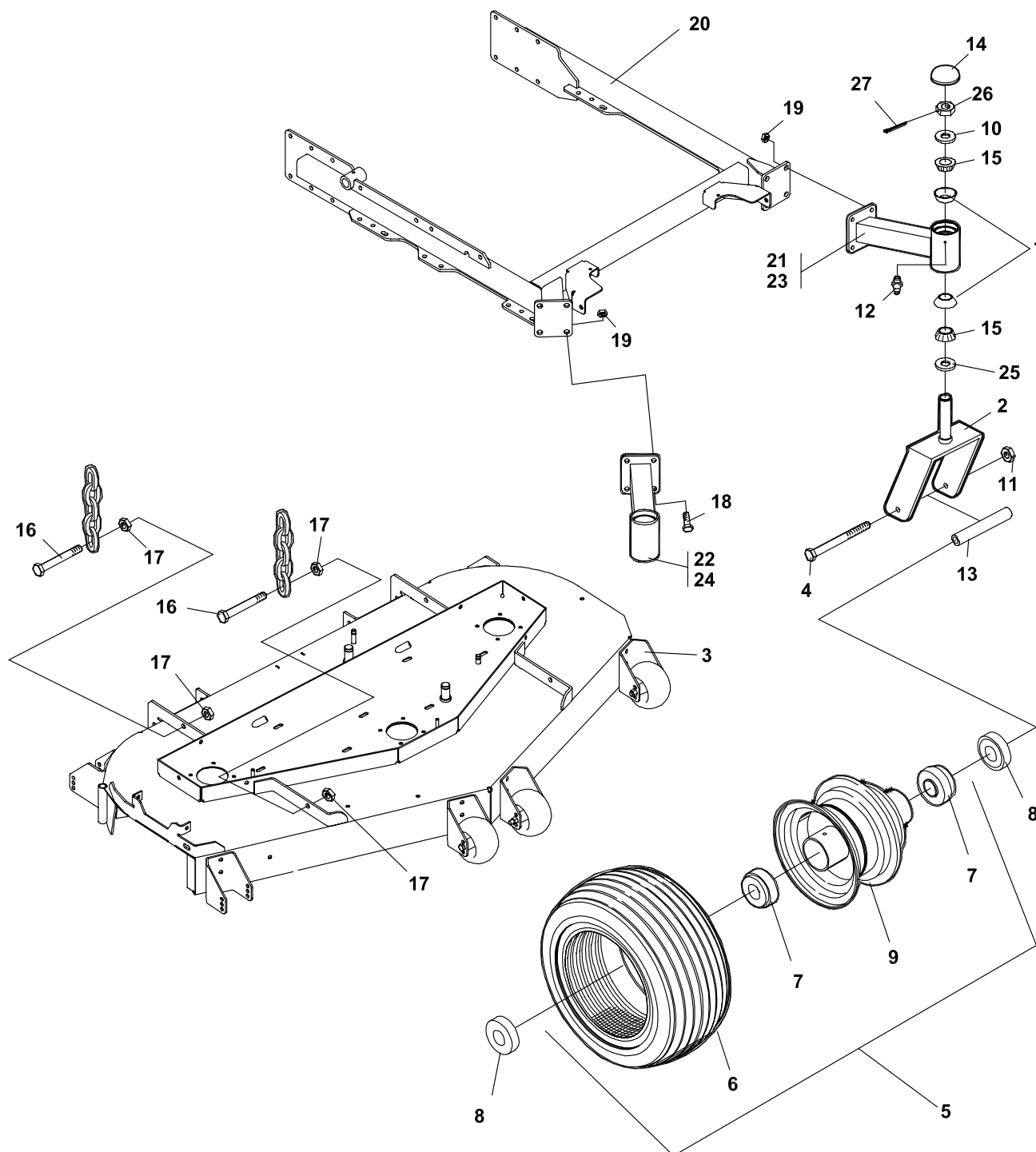
\* NOT ILLUSTRATED



# CRADLE & CASTER ASSEMBLY

FIGURE 16

BZT  
2200D  
Series





# BZT 2200D Series

## CRADLE & CASTER ASSEMBLY

2721545-16

FIGURE 16

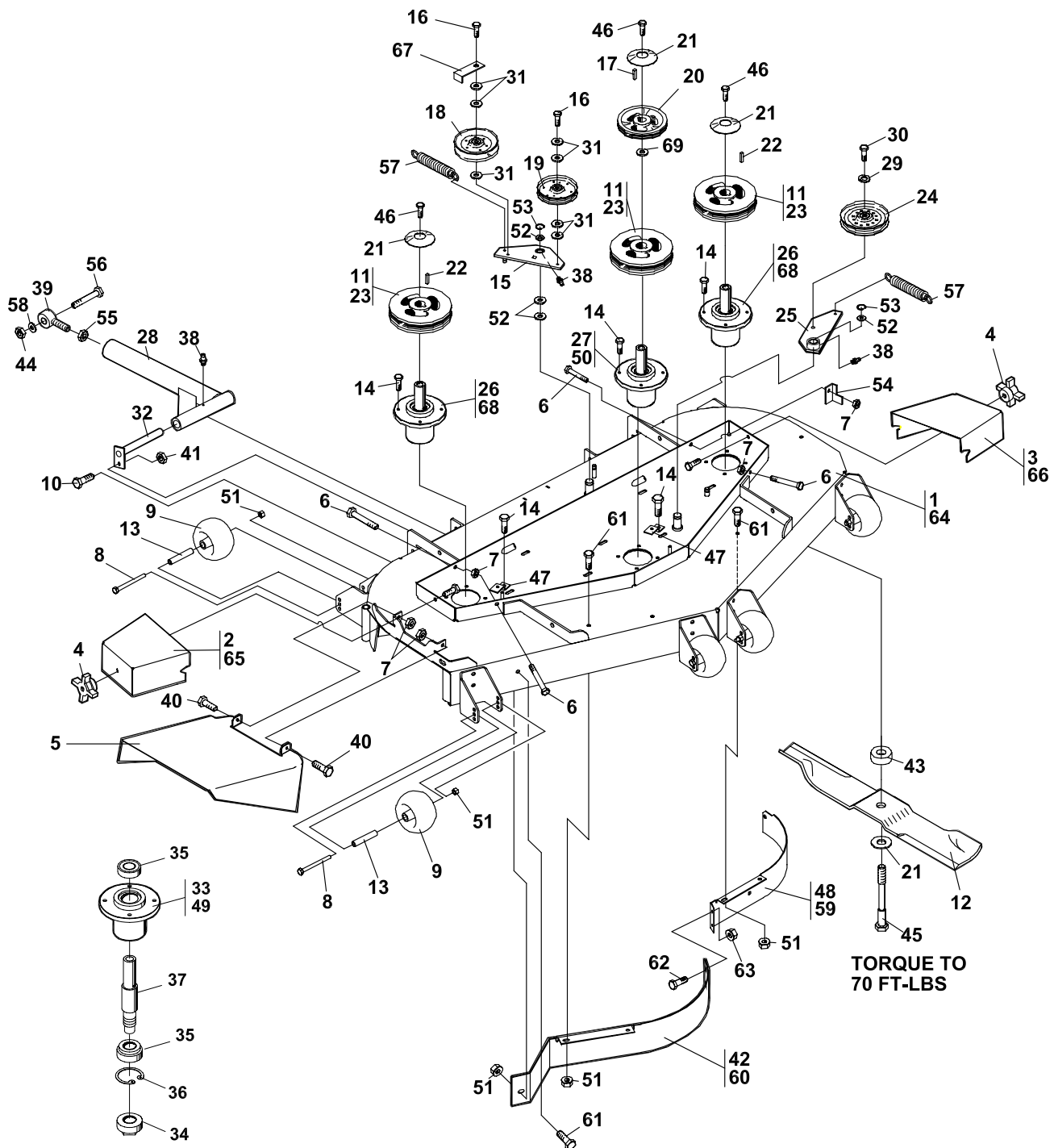
ITEM	PART NO.	DESCRIPTION	QTY	ITEM	PART NO.	DESCRIPTION	QTY
16-1	48043-03C	S CUP, OUTER BEARING	4				
16-2	2721306.5	WLDMT-CASTER YOKE	2				
16-3		DECK W/LABS					
16-4	64123-215	BOLT-HEX 3/4-10 X 7-1/2	2				
16-5	2722228	WHEEL-13X5.00-6 ASSY (INCLUDES ITEMS 6, 7 & 9)	2				
16-6	2720475-01	TIRE-13X5.00-6 SMOOTH	1				
16-7	2722228-03	BEARING	2				
16-8	2722231	SPACER-END	4				
16-9	2722228-01	RIM-13" ASSY W/VLV STEM	1				
16-10	64163-64	WSHR 1.015X1.500X14GA	2				
16-11	64229-07	LOCKNUT-NYLON 3/4-10	2				
16-12	85010N	ZERK, 1/4-28 STR SLF THD	9				
16-13	2722230-02	SPANNER-13" WHEEL	2				
16-14	2188135	DUST COVER	2				
16-15	48043-04C	S CONE, OUTER BEARING	4				
16-16	64205-029	BLT-MET M12X1.75X40	8				
16-17	64246-04	NUT-WHIZ M12-1.75	16				
16-18	A1105061	BOLT-M12-1.75 X 30	8				
16-19	64237-06	LOCKNUT-NYLON M12-1.75	8				
16-20	2722723.5	WLDMT-CRADLE	1				
16-21	4113901.5	WLDMT-CASTR ARM 61 LH	1				
16-22	4113902.5	WLDMT-CASTR ARM 61 RH (USE FOR 61" DECK 642226)	1				
16-23	2722399.5	WLDMT-CASTR ARM 52 LH	1				
16-24	2722398.5	WLDMT-CASTR ARM 52 RH (USE FOR 52" SD DECK 642225)	1				
16-25	48480	SEAL	2				
16-26	64025-20	NUT-HEX 3/4-16 SLOT U	2				
16-27	64140-5	COTTER PIN-1/8X1-1/2	2				

# 52" & 61" SIDE DISCHARGE

**BZT  
2200D  
Series**



**FIGURE 17**



- 2186207-ASSY TOP MOUNT SPINDLE
- 2186205-ASSY TOP MOUNT SPINDLE  
(INCLUDES ITEMS 33-37)
- 2720759-ASSY TOP MNT SPINDLE 52"
- 2720758-ASSY TOP MNT SPINDLE 52"  
(INCLUDES ITEMS 34-37, 49)



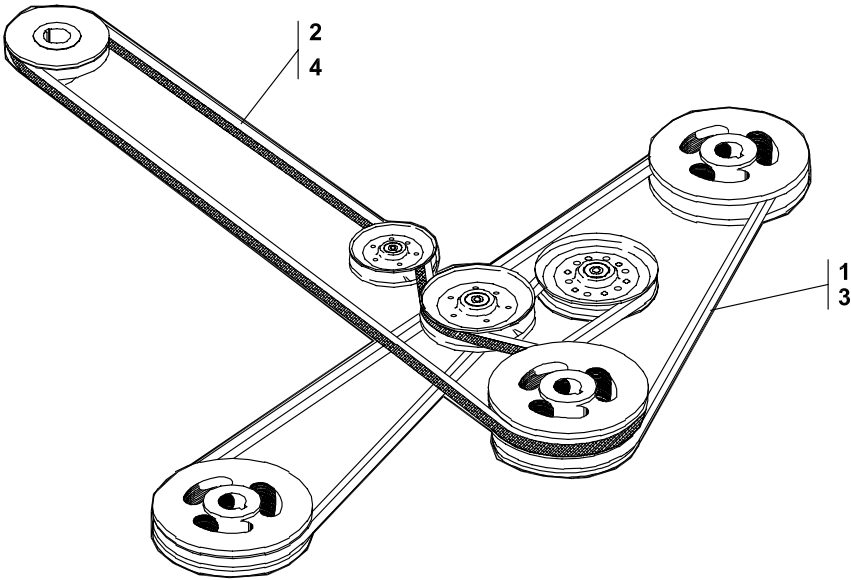
# BZT 2200D Series

## 52" & 61" SIDE DISCHARGE

2721545-17

FIGURE 17

ITEM	PART NO.	DESCRIPTION	QTY	ITEM	PART NO.	DESCRIPTION	QTY
17-1	4113653	DECK-54 W/LABELS	1	17-34	38315	NUT-SPINDLE	3
17-2	2182458.5	BELT COVER RH (USE ON 52" SD DECK ONLY)	1	17-35	38348-01	BEARING-SPINDLE	6
17-3	2182459.5	BELT COVER LH (USE ON 52" SD DECK ONLY)	1	17-36	64144-38	SNAP-RING	3
17-4	38524	KNOB-4 PRONG 3/8-16	2	17-37	2183070-01	SPINDLE (USED IN ASSY 2186207)	1
17-5	2302092.5	CHUTE-MID 61 (USE ON 61" SD DECK ONLY)	1		2183070-02	SPINDLE (USED IN ASSY 2186205)	2
	32723.5	CHUTE-DISCHARGE MIDSZ (USE ON 52" SD DECK ONLY)	1	17-38	85010N	STRAIGHT ZERK FTTG	6
17-6	64166-17	BLT-SHLDR 3/8-16X1.12	4	17-39	2188142-01	ROD, END 5/8	2
17-7	64229-03	LOCKNUT NYLON 3/8-16	6	17-40	64123-50	BLT-HEX 3/8-16X1	2
17-8	64205-004	BOLT-MET M10-1.5X110 (USE QTY 7 ON 61", QTY 6 ON 52")		17-41	64237-05	LOCKNUT-NYLON M8-1.25	2
17-9	2721512	ROLLER-5X2.75 CENTERED (USE QTY 7 ON 61", QTY 6 ON 52")		17-42	4117664.7	BAFFLE-FRONT CENTER (USE ON 61" SD DECK ONLY)	1
17-10	64205-001	BLT-MET M8-1.25X20	2	17-43	2188162	SPACER-BLADE	3
17-11	2308140	PULLEY-ENGINE (USE ON 52" SD DECK ONLY)	3	17-44	64229-06	LOCKNUT-NYLON 5/8-11	2
17-12	112111-03	BLADE 21.0 OFFST (USE ON 61" SD DECK ONLY)	3	17-45	64123-209	BLT-HEX 5/8-18X3.5	3
	112111-02	BLADE 18.0 OFFST (USE ON 52" SD DECK ONLY)	3	17-46	64123-208	BLT-HEX 5/8-11X1 1/2	3
17-13	2720685	SPACER-ROLLER (USE QTY 7 ON 61", QTY 6 ON 52")		17-47	32767.7	SUPPORT-BELT (USE ON 61" SD DECK ONLY)	2
17-14	64197-003	BLT-TDFM 3/8-16X1 (USE QTY 14 ON 61", QTY 12 ON 52")		17-48	4117663.7	BAFFLE-FRONT LH (USE ON 61" SD DECK ONLY)	1
17-15	2186140.7	WLDMT-PTO IDLER	1	17-49	2221000	HOUSING-SPINDLE 52" (USE ON 52" SD DECK ONLY)	3
17-16	64197-004	BOLT TR 3/8-16X1 3/4	2	17-50	2720758	ASSY-TOP MNT CEN SPNDL (INCLUDES ITEMS 34-37, 49) (USE ON 52" SD DECK ONLY)	1
17-17	64164-13	1/4X1/4X2 SQ END KEY	1	17-51	64237-03	LOCKNUT-NYLON M10 (USE QTY 13 ON 61", QTY 12 ON 52")	
17-18	48393	PULLEY, V IDLER	1	17-52	64163-65	WSHR .890X1.375X18 GA	4
17-19	38297	IDLER, 5.0 OD FLNGD	1	17-53	64221-04	E-CLIP .875	2
17-20	128011	PULLEY, DECK DRIVE (USE ON 61" SD DECK ONLY)	1	17-54	2182437.7	GUIDE-BELT (USE ON 61" SD DECK ONLY)	1
17-21	64209-03	SPRING WSHR .67 ID	6	17-55	64001-1	NUT-JAM 5/8-18	2
17-22	64164-12	1/4X1/4X1 SQ END KEY	2	17-56	64123-206	BLT-HEX 5/8-11X4.5	2
17-23	31012A	ENGINE PULLEY (USE ON 61" SD DECK ONLY)	3	17-57	2188131	SPRING-EXTENSION	2
17-24	128169	PULLEY, IDLER 5.50"	1	17-58	64163-73	WSHR-FLT .625IDX.062	A/R
17-25	2186138.7	WLDMT-DECK IDLER (USE ON 61" SD DECK ONLY)	1	17-59	4114038.7	BAFFLE-FRONT LH (USE ON 52" SD DECK ONLY)	1
	2186164.7	WLDMT-DECK IDLER (USE ON 52" SD DECK ONLY)	1	17-60	2182496.7	BAFFLE-FRONT RH (USE ON 52" SD DECK ONLY)	1
17-26	2720759	ASSY-TOP MOUNT SPINDLE (INCLUDES ITEMS 34-37, 49) (USE ON 52" SD DECK ONLY)	2	17-61	64205-007	BLT MET M10-1.50X20	6
17-27	2186207	ASSY-TOP MNT SPNDL (INCLUDES ITEMS 33-37) (USE ON 61" SD DECK ONLY)	1	17-62	64018-2	BLT-CRG 1/4-20X3/4	2
17-28	2186185.7	WLDMT-PUSHBAR	2	17-63	64229-01	LOCK NUT-NYL 1/4-20	2
17-29	64006-05	LCKWSHR HELICAL 1/2	1	17-64	4113514	S 61 CUTTERDECK W/LABS	1
17-30	64123-05	BLT-HEX 1/2-20X1 1/2	1	17-65	2182352.5	BELT COVER RH (USE ON 61" SD DECK ONLY)	1
17-31	64163-46	WSHR .383/.393 X 7 GA	6	17-66	2182351.5	BELT COVER LH (USE ON 61" SD DECK ONLY)	1
17-32	2186125	WLDMT-LOCK PSHBR	2	17-67	2302125.7	GUIDE-BELT	1
17-33	2191000.7	SPINDLE HOUSING (USE ON 61" SD DECK ONLY)	3	17-68	2186205	ASSY-TOP MOUNT SPINDLE (INCLUDES ITEMS 33-37)	2
				17-69	64163-64	WSHR 1.015 X 1.500 X 14GA	1





# BZT 2200D Series

## BELTS

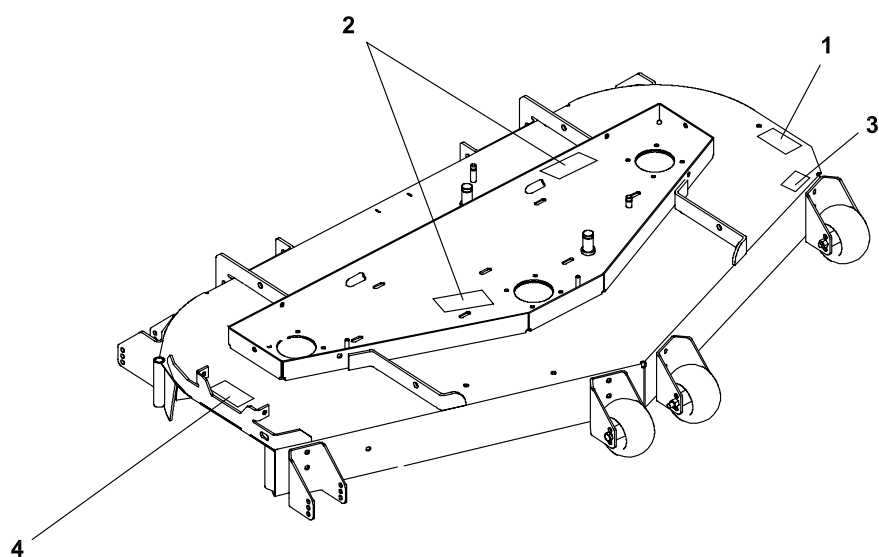
2721545-18

FIGURE 18

ITEM	PART NO.	DESCRIPTION	QTY	ITEM	PART NO.	DESCRIPTION	QTY
18-1	2188176	BELT-CUTTERDECK 54	1				
18-2	2188134	BELT-PTO (USE ON 52" SD DECK)	1				
18-3	128003	BELT-CUTTERDECK	1				
18-4	2720881	BELT-PTO (USE ON 61" SD DECK)	1				



FIGURE 19







# BZT 2200D Series

## DECALS-CUTTERDECKS

2187164

FIGURE 19

ITEM	PART NO.	DESCRIPTION	QTY	ITEM	PART NO.	DESCRIPTION	QTY
19-1	2000572	LABEL-WARNING BLADES	1				
19-2	2000577	LABEL, WARNING	2				
19-3	2000696	LBL - BLADE INSTALL	1				
19-4	2000677	LABEL-DANGER/WARNING	1				



## World Class Quality, Performance And Support

Equipment from Textron Golf, Turf & Specialty Products is built to exacting standards ensured by ISO 9001 registration at all our manufacturing locations.

A worldwide dealer network and factory-trained technicians backed by Textron Parts Xpress provide reliable, high-quality product support.



---

**BOB-CAT BUNTON CUSHMAN JACOBSEN RANSOMES RYAN**

1451 Marvin Griffin Rd, Augusta, GA 30906  
[www.textron.com](http://www.textron.com)