



BUNTON[®]

SETUP, PARTS & MAINTENANCE MANUAL BZT 2000 EFI SERIES

Models:

642230 BZT 2260EFI 26HP KLR W/61 SIDE DISCHARGE
642231 BZT 2260EFI 26HP KLR W/72 SIDE DISCHARGE



WARNING: If incorrectly used this machine can cause severe injury. Those who use and maintain this machine should be trained in its proper use, warned of its dangers and should read the entire manual before attempting to set up, operate, adjust or service the machine.

Operation & Safety Manual: 2722184

BUNTON

TEXTRON
GOLF, TURF & SPECIALTY PRODUCTS

2722185 REV C

CALIFORNIA
Proposition 65 Warning

Diesel engine exhaust and some of its constituents are known to the State of California to cause cancer, birth defects and other reproductive harm.



WARNING

The engine exhaust from this product contains chemicals known to the State of California to cause cancer, birth defects or other reproductive harm.

Californie Proposition 65
Avertissement

Les échappements des moteurs diesel et certains de leurs composés sont reconnus par l'Etat de Californie pour être cancérigènes, provoquer des défauts congénitaux et d'autres dangers en matière de reproduction.



AVERTISSEMENT

L'émission du moteur de ce matériel contient des produits chimiques que l'Etat de Californie considère être cancérigènes, provoquer des défauts congénitaux et d'autres dangers en matière de reproduction.

California Advertencia
de la Proposicion 65

El estado de California hace saber que los gases de escape de los motores diesel y algunos de sus componentes producen cáncer, defectos de nacimiento y otros daños en el proceso de reproducción humana.



ADVERTENCIA

El estado de California hace saber que los gases de escape de este producto contienen productos químicos que producen cáncer, defectos de nacimiento y otros daños en el proceso de reproducción humana.



BZT 2000 EFI Series

IMPORTANT MESSAGE

Thank you for purchasing this Bunton product. You have purchased a world class mowing product, one of the best designed and built anywhere.

This machine comes with an Operation and Safety Manual and a separate Setup, Parts and Maintenance Manual. The useful life and good service you receive from this machine depends to a large extent on how well you read and understand these manuals. Treat your machine properly, lubricate and adjust it as instructed, and it will give you many years of reliable service.

Your safe use of this Bunton product is one of our prime design objectives. Many safety features are built in, but we also rely on your good sense and care to achieve accident-free operation. For best protection, study the manuals thoroughly and watch the operation training video. Learn the proper operation of all controls. Observe all safety precautions. Follow all instructions and warnings completely. Do not remove or defeat any safety features. Make sure those who operate this machine are as well informed and careful in its use as you are.

See a Bunton dealer for any service or parts needed. Bunton service ensures that you continue to receive the best results possible from Bunton's products. You can trust Bunton replacement parts because they are manufactured with the same high precision and quality as the original parts.

Bunton designs and builds its equipment to serve many years in a safe and productive manner. For longest life, use this machine only as directed in the manuals, keep it in good repair and follow safety warnings and instructions. You'll always be glad you did.

Textron Golf, Turf & Specialty Products
One Bob Cat Lane
Johnson Creek, WI 53038-0469

TABLE OF CONTENTS	FIGURES	PAGE
SAFETY		2
ASSEMBLY AND SETUP		3-5
MAINTENANCE CHART		6
MAINTENANCE RECORD		7
MAINTENANCE		8-14
ADJUSTMENTS		15-19
BELT REPLACEMENT		20, 21
SPECIFICATIONS		22-24
PARTS SECTION		25
UPPER ENGINE DECK ASSY	FIGURE 1	26, 27
LOWER ENGINE DECK ASSY/CLUTCH	FIGURE 2	28, 29
CRADLE ASSEMBLY-61"	FIGURE 3	30, 31
DECALS	FIGURE 4	32, 33
BUMPER	FIGURE 5	34, 35
BRAKES/REAR WHEEL	FIGURE 6	36, 37
HYDRAULICS	FIGURE 7	38, 39
HYDROGEAR PUMP	FIGURE 8	40, 41
DECALS-CUTTERDECKS	FIGURE 9	42, 43
KOHLER WIRE HARNESS	FIGURE 10	44, 45
FUEL TANKS/CONTROL PANEL	FIGURE 11	46, 47
ELECTRIC DECK LIFT-72"	FIGURE 12	48, 49
OIL COOLER/ECU	FIGURE 13	50, 51
SEAT ASSEMBLY & ROPS	FIGURE 14	52, 53
ELECTRIC DECK LIFT-61"	FIGURE 15	54, 55
STEERING/INSTRUMENTS	FIGURE 16	56, 57
CRADLE & CASTER ASSEMBLY	FIGURE 17	58, 59
61" SIDE DISCHARGE	FIGURE 18	60, 61
BELTS	FIGURE 19	62, 63
72" SIDE DISCHARGE	FIGURE 20	64, 65
CRADLE ASSEMBLY-72"	FIGURE 21	66, 67

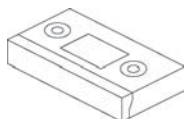


NOTICE !!!

Unauthorized modifications may present **extreme** safety hazards to operators and bystanders and could also result in product damage.

Textron Golf, Turf & Specialty Products strongly warns against, rejects and disclaims any modifications, add-on accessories or product alterations that are not designed, developed, tested and approved by Textron Golf, Turf & Specialty Products Engineering Department. Any Textron Golf, Turf & Specialty Products product that is altered, modified or changed in any manner not specifically authorized after original manufacture—including the addition of “after-market” accessories or component parts not specifically approved by Textron Golf, Turf & Specialty Products—will result in the Textron Golf, Turf & Specialty Products Warranty being voided.

Any and all liability for personal injury and/or property damage caused by any unauthorized modifications, add-on accessories or products not approved by Textron Golf, Turf & Specialty Products will be considered the responsibility of the individual(s) or company designing and/or making such changes. Textron Golf, Turf & Specialty Products will vigorously pursue full indemnification and costs from any party responsible for such unauthorized post-manufacture modifications and/or accessories should personal injury and/or property damage result.



OPERATION TRAINING VIDEO:

Part Number	Description
2810586	BZT 2000 SERIES



This symbol means:
ATTENTION!
BECOME ALERT!

Your safety and the safety of others is involved.

Signal word definitions:

The signal words below are used to identify levels of hazard seriousness. These words appear in this manual and on the safety labels attached to Textron Golf, Turf & Specialty Products machines. For your safety and the safety of others, read and follow the information given with these signal words and/or the symbol shown above.

DANGER

DANGER indicates an imminently hazardous situation which, if not avoided, **WILL** result in death or serious injury.

WARNING

WARNING indicates a potentially hazardous situation which, if not avoided, **COULD** result in death or serious injury.

CAUTION

CAUTION indicates a potentially hazardous situation which, if not avoided, **MAY** result in minor or moderate injury. It may also be used to alert against unsafe practices or property damage.

CAUTION

CAUTION used without the safety alert symbol indicates a potentially hazardous situation which, if not avoided, **MAY** result in property damage.



MODEL NUMBER: This number appears on sales literature, technical manuals and price lists.

SERIAL NUMBER: This number appears only on your mower. It contains the model number followed consecutively by the serial number. Use this number when ordering parts or seeking warranty information.



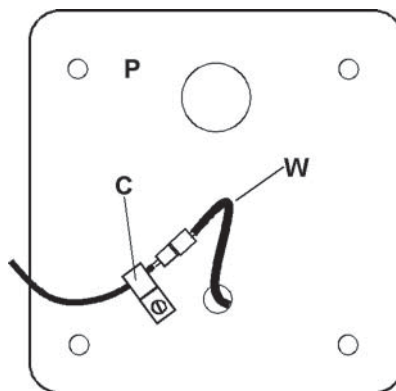
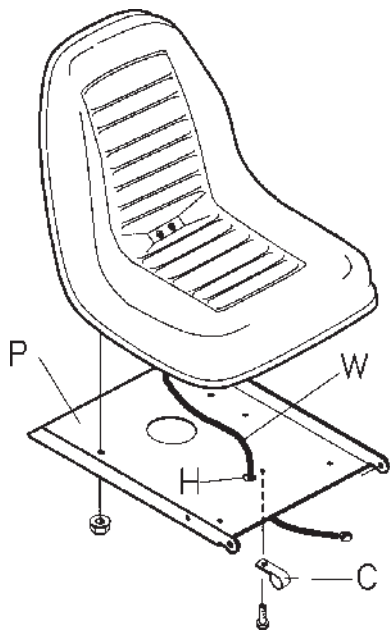
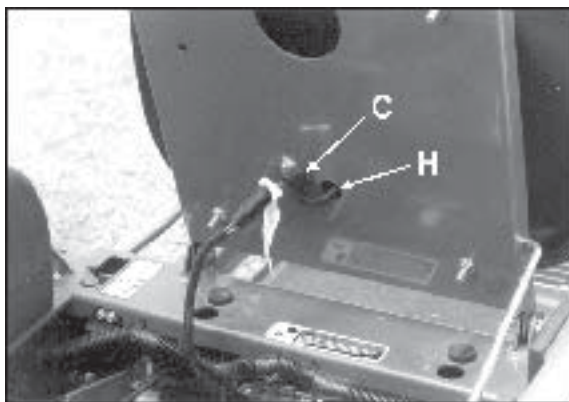
TOOLS REQUIRED FOR ASSEMBLY

- Wrecking bar
- Claw hammer
- Ratchets: 3/8"
- Sockets: 3/8", 1/2", 17 mm, 19 mm
- Wrenches: two 15/16" (or adjustable), 13 mm, 17 mm, 19 mm
- Level
- Straight edge
- Tire pressure gauge

NOTE: All references below to the "right" or "left" are with respect to an operator at the controls.

1. INSTALL SEAT

- Position seat over seat plate **P** and route seat wire **W** through hole **H** in seat plate. Drop seat mounting studs through seat plate holes. Secure studs with four 5/16-18 whiz nuts and tighten securely.
- Leave enough seat wire between the seat and seat plate to allow full fore and aft travel of the seat. Secure seat wire on the bottom of the seat plate with clip **C** and a 1/4-20x3/8 thread forming screw.
- Connect the tractor harness to the seat wire.



Bottom of seat plate **P** showing clip **C**



2. Set tire pressures to 14 lbs/in² (1.0 kg/cm²). Tires are overinflated for shipping.

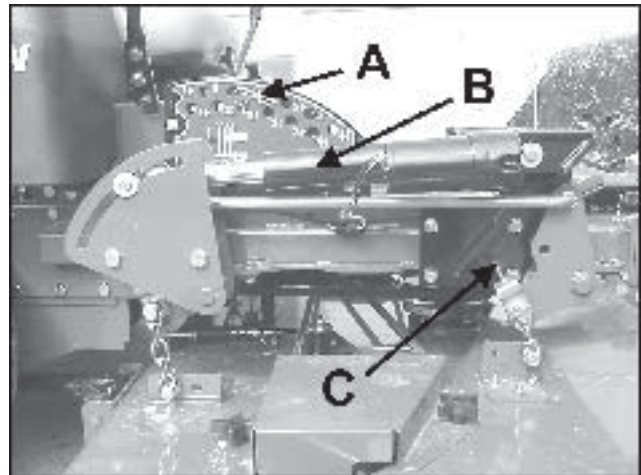
3. LEVEL CUTTERDECK

- **Side Discharge:** The front of a side discharge deck should be slightly lower than the rear.
- **Mulching:** The front of a mulching deck should be slightly higher than the rear.

To level 61" decks, follow Steps a-d:

To level 72" decks, follow Steps e-h:

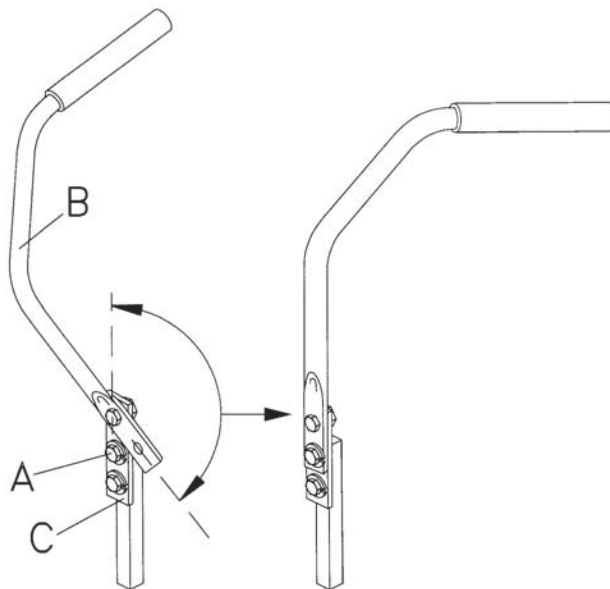
- a) Park the machine on a smooth, level surface. The deck may be set to any cutting height.
- b) Place a level on the deck, from front to rear. If the level is too short to reach all the way from front to rear, lay a straight edge on the deck first, then place the level on the straight edge.
- c) Lay a 1/8" spacer beneath the front of the level for the side discharge and under the rear for mulching.
- d) Adjust nuts **M** until the level's bubble is centered. Repeat for the other side of the deck.
- e) Remove the height of cut pin **A** and raise the cutterdeck to the 3" height of cut position.
- f) Locate (2) 3" tall blocks just inside the front rollers and (2) 2-7/8" tall blocks just inside the rear rollers.
- g) Lower the deck until it is resting on the blocks and there is plenty of float for the actuator **B**.
- h) Loosen the jamnuts on the height of cut clips. Adjust the thread rolling screws **C** on the front and rear chains until the chains just become tight. Tighten the jamnuts against the clips.





4. TRACTION LEVERS

- Remove bolt **A**.
- Rotate traction lever **B** into position and secure with bolt **A**. Repeat for the other lever.
- Tighten all fasteners.
- Sit on the machine. If the levers are too long, bracket **C** may be removed to make them shorter.



5. FINAL PREPARATIONS

- Check the engine and hydraulic oil levels. Top up with the correct oil if necessary. Use 10W30 motor oil for the engine. Use fresh, clean 15W40 or 20W50 motor oil or 15W50 synthetic motor oil for the hydraulic system.
- Remove the battery from the machine. Fill the battery to the bottom of the vent wells with acid and trickle charge for several hours. Replace the battery in the machine and make the connections, red to positive first, then black (ground) to negative.
- Read Operation and Safety Manual before starting.
- Run engine at full RPM for 5 minutes before engaging blades to allow the engine to be fully lubricated before load is applied.
- Check the hydrostat neutral adjustment. Neutral is set at the factory but may require readjustment if air trapped during the initial oil fill has worked out of the system. See adjustments section later in this manual.
- Do not use the machine without an approved grass collector, the grass discharge chute or mulching plates correctly fitted.

MAINTENANCE CHART

**BZT 2000
EFI Series**



MAINTENANCE OPERATION	Maintenance is an ongoing job. These intervals are maximum times between maintenance operations. Perform more often under severe conditions.						
	FIRST 5 HOURS	DAILY	EVERY 25 HOURS	EVERY 50 HOURS	EVERY 100 HOURS	EVERY 200 HOURS	EVERY 500 HOURS
ENGINE							
Consult the engine manual for additional information and instructions							
Check/Top up Oil Level		X					
Check for Leaks		X					
Clean Air Intake Screen		X					
Clean Air Cleaner Precleaner			X				
Clean Air Cleaner Element					X		
Clean Cooling Fins					X		
Change Oil and Filter	X	See engine manufacturer's manual					
Check/Replace Spark Plugs						X	
HYDRAULICS							
Check for Leaks		X					
Check/Top up Oil Level					X		
Change Oil and Filter	X						X
MACHINE							
Check Interlock Operation		X					
Check Tire Pressures		X					
Check/Top up Battery					X		
Lubricate All Points				X			

**Consult the manufacturer's manual for your engine
for further information and instructions.**

NOTES

This image shows a single sheet of white paper with horizontal ruling lines. The lines are evenly spaced and run across the width of the page. There are no margins, text, or other markings on the paper.

GENERAL	DATE	HRS	DATE	HRS	DATE	HRS	DATE	HRS	DATE	HRS	DATE	HRS
	Check tire pressures											
	Lubricate all points											
	Check nuts & bolts											
ENGINE												
Check oil level												
Change oil												
Clean air cleaner element												
Clean cooling fins												
Replace air cleaner element												
Clean & gap spark plugs												
NOTE: After first 5 hours of operation replace engine oil, hydraulic oil and both filters.												



CHECK DAILY

Operator Presence Interlock System - Start Operation

For the engine to crank, the parking brake must be on, the PTO (blades) off and traction levers in the neutral lock position. Sit in the seat and check, one by one, if the engine will crank with the parking brake off, the blades on, and either traction lever out of neutral lock. Also, make sure engine coolant temperature gauge light flashes upon turning key to the **ON** position.

Operator Presence Interlock System - Run Operation

The operator must be in the seat for the engine to run with the parking brake off, the traction levers moved out of the neutral lock position, or the blades on. To check:

1. Start the engine and run at 1/2 throttle with the operator on the machine but raised off the seat.
2. One by one: move the parking brake to the "OFF" position, traction levers out of the neutral lock position (check each independently), and turn the blades on. Each check should kill the engine after 1/2 second. (A 1/2 second delay is built into the system to prevent engine cutout when traversing rough terrain.)

Repair machine before using if the Operator Presence Interlock System does not operate correctly in start or run. Contact your authorized Bunton dealer.

Hardware

Tighten any nuts and bolts found loose. Replace any broken or missing cotter pins. Repair any other problems before operating.

Tire pressure

Tires should be kept inflated at 14 lbs/in² (1.0 kg/cm²). Improper tire inflation can cause rapid tire wear and poor traction. Uneven inflation can cause uneven cutting.

Battery

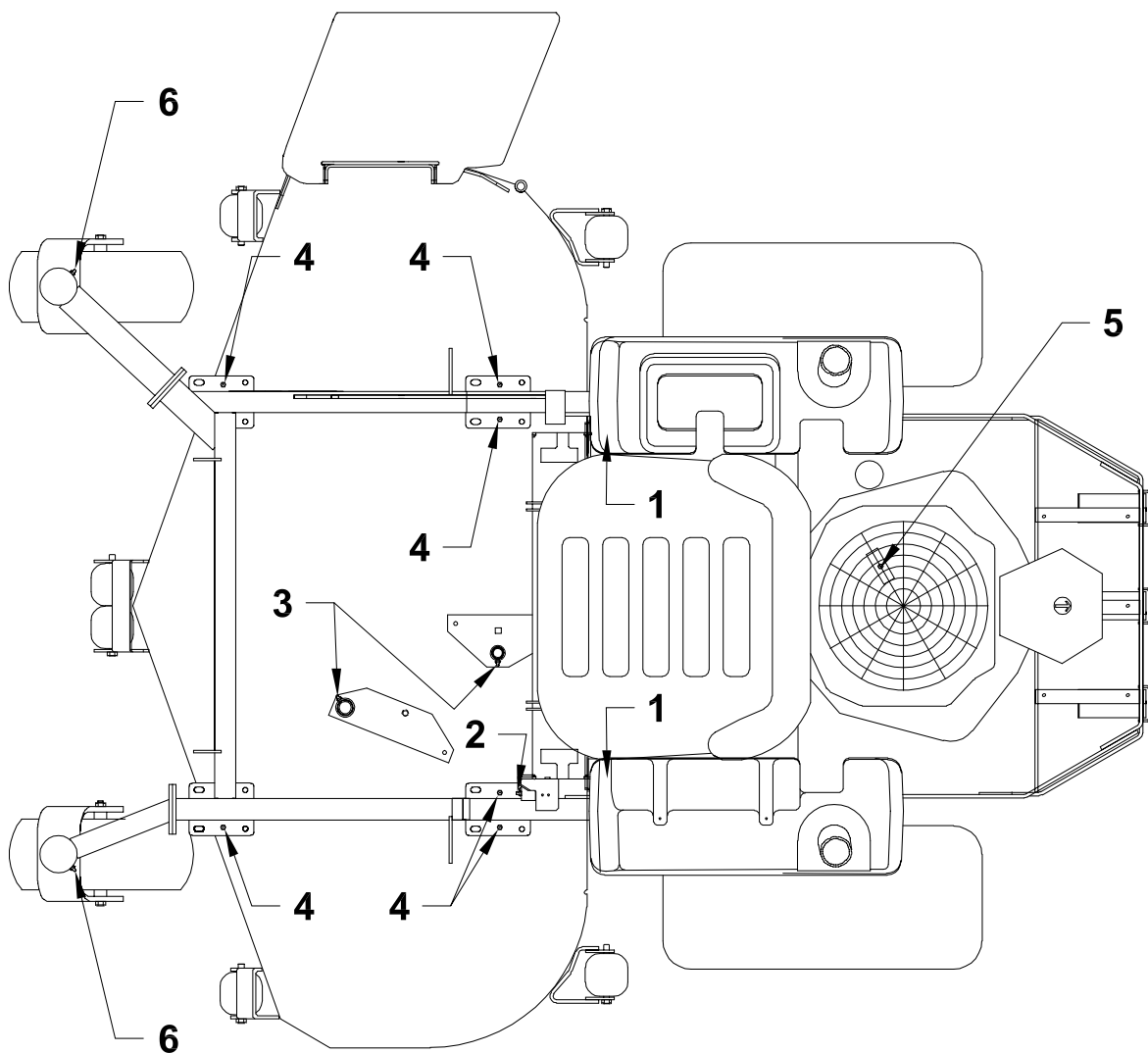
Check the electrolyte level at each oil change as follows:

1. Stop engine and remove key.
2. Remove battery vent caps. The electrolyte level should reach the bottom of the vents.
3. Top up, if necessary, with distilled water.
4. Replace vent caps.

Engine Malfunction Indicator Lamp

The ECU is the brain or central processing computer of the entire EFI fuel/ignition management system. If a fault is detected, the ECU turns on the Malfunction Indicator Light (MIL) on the equipment control panel, stores the fault code in its fault memory, and goes into a default operating mode.

NOTE: When the key is first turned on, the light comes on for several seconds (or until the engine starts) to verify the light is working.



LUBRICATION

Every 50 hours of operation, lubricate the following points (1-5) with grease:

1. Push arms (2 points located at rear of cutterdeck under each fuel tank)
2. Brake lever pivot (1 point)
3. Deck idler pivot bearings (2 points)
4. Deck lift pivots (6 points)
5. Hydro belt tensioner (1 point under engine deck)
6. Caster wheel pivots (2 points)
(Lubricate every 500 hours or once a year)

NOTE ON BLADE SPINDLES - The blade spindles on these machines use a superior sealed bearing that does not require relubrication.



HYDRAULIC SYSTEM

After the first 5 hours of operation, fluid level in the hydraulic system should be checked every 100 hours or when a leak has occurred. If the fluid is low, check all components for leaks.

To check, remove reservoir cap **M**. The fluid level should be at the bottom of the filler tube. If low, top up (do not overfill). Use one of the oils listed below:

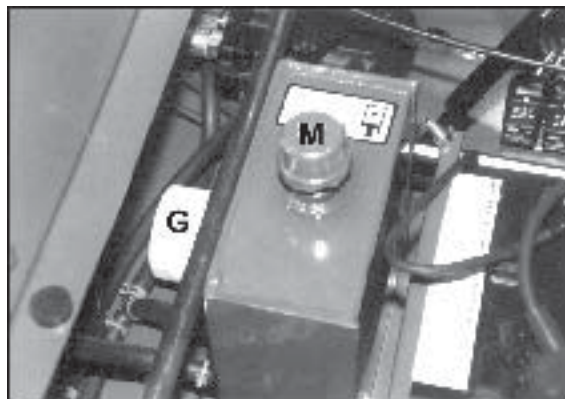
- SAE 15W40 motor oil
- SAE 20W50 motor oil
- 15W50 synthetic motor oil

AFTER FIRST FIVE (5) HOURS

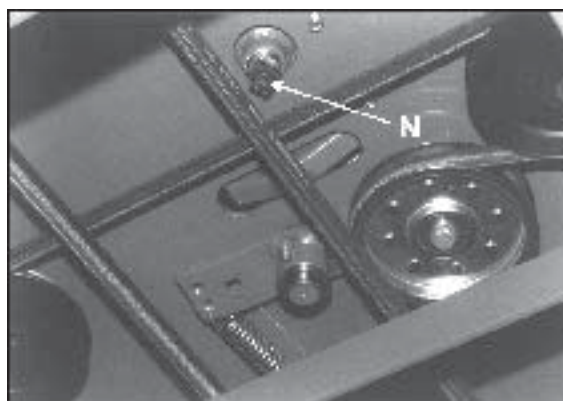
1. Remove plug **N** to drain hydraulic reservoir. Dispose of used oil in accordance with local requirements.
2. Clean and replace the plug.
3. Change hydraulic oil filter **G**.
4. Fill the reservoir with fresh oil to the bottom of the reservoir filler tube, using an oil from the list above. Do not overfill.

PERIODIC OIL CHANGES

Change the hydraulic fluid and hydraulic filter after each 500 hours of operation using the same procedure given above.



View from right side



View from below machine

NOTES:

Before servicing the hydraulic system, stop the engine, disconnect spark plug wires and disengage the PTO.

- After any hydraulic line is opened, plug or cap it promptly to reduce the risk of contamination.
- Do not use teflon tape on hydraulic pipe fittings. Use a liquid sealant that will dissolve into the system.
- Make sure all hydraulic connections are tight and hydraulic hoses and lines are in good condition before applying pressure to system.

WARNING

The machine's hydraulic system operates under high pressure. When checking for leaks, do not use your hands to attempt to find a leak. Instead, use cardboard or paper. Escaping hydraulic fluid can be under sufficient pressure to penetrate skin and cause serious injury. If hydraulic fluid is injected into the skin, it must be promptly removed by a doctor familiar with this form of injury or gangrene may result.



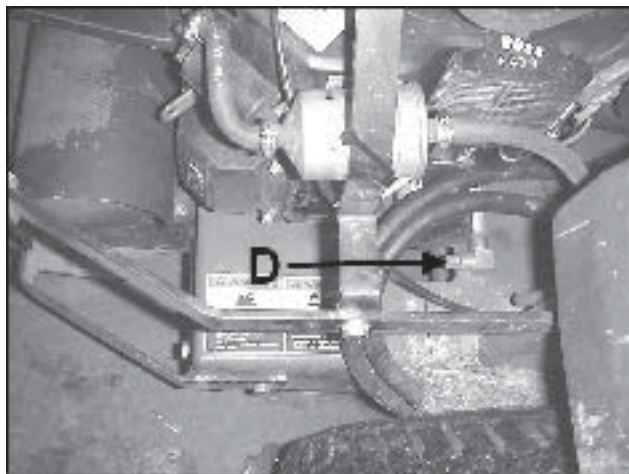
ENGINE OIL

Do not perform engine maintenance without the engine off, spark plug wires disconnected and PTO disengaged.

AFTER FIRST FIVE (5) HOURS

While the engine is warm:

1. Remove drain cap **D** and drain the crankcase. Dispose of used oil in accordance with local requirements.
2. Clean and replace the cap.
3. Change oil filter.
4. Fill the crankcase with fresh oil to the full mark. Do not overfill. See engine manual for oil specifications.



DAILY

1. Check oil level with the dipstick.
2. If oil is needed, add fresh oil of proper viscosity and grade. See engine manual for oil specifications. Do not overfill.
3. Replace dipstick before starting engine.

PERIODIC OIL CHANGES

1. See engine manual for oil and filter change intervals after the break-in period.
2. Follow instructions for first oil change, above.

SPARK PLUGS

Remove each plug and check condition.

- Good operating conditions are indicated if the plug has a light coating of grey or tan deposit.
- A white blistered coating indicates overheating. A black coating indicates an “over rich” fuel mixture. Both may be caused by a clogged air cleaner or improper carburetor adjustment.
- Do not sandblast, wire brush or otherwise attempt to repair a plug in poor condition. Best results are obtained with a new plug.
- Set plug gap as specified in engine manual..



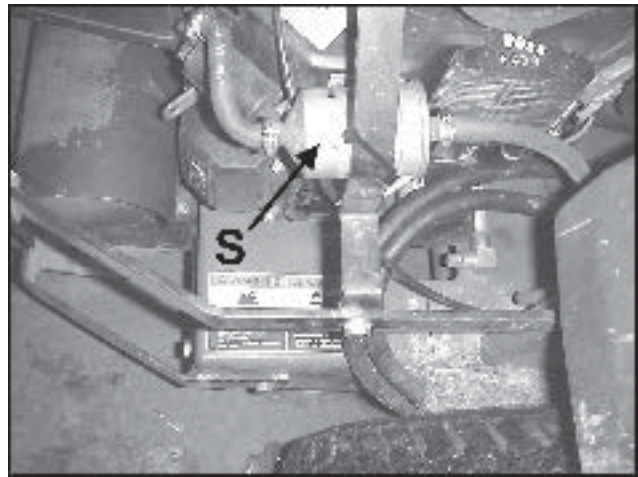
FUEL SYSTEM

⚠ WARNING Before attempting to service any part of the fuel system, the pressure must be relieved.

Refer to section 5B of the engine manual.

A low pressure filter **C** is located on the kickplate as shown. Inspect at every oil change and replace when necessary.

A high pressure fuel filter **S** is located as shown. The fuel in this filter is always under pressure. The filter should be replaced every 1500 hours of operation.



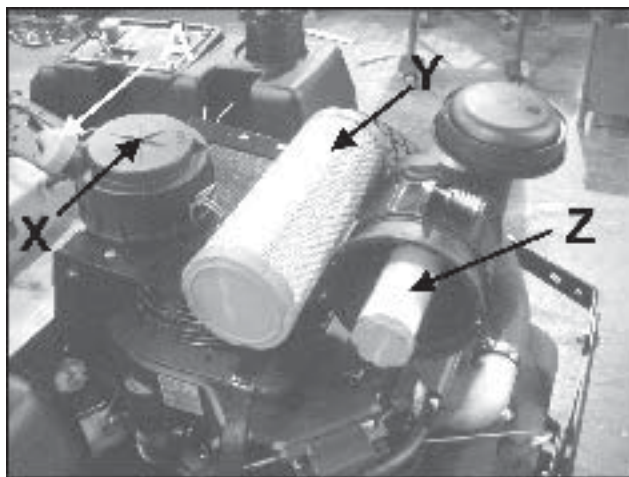


AIR CLEANER

Clean and replace the air cleaner element as specified in the service chart. Uneven running, lack of power or black exhaust fumes may indicate a dirty air cleaner.

To replace air cleaner elements:

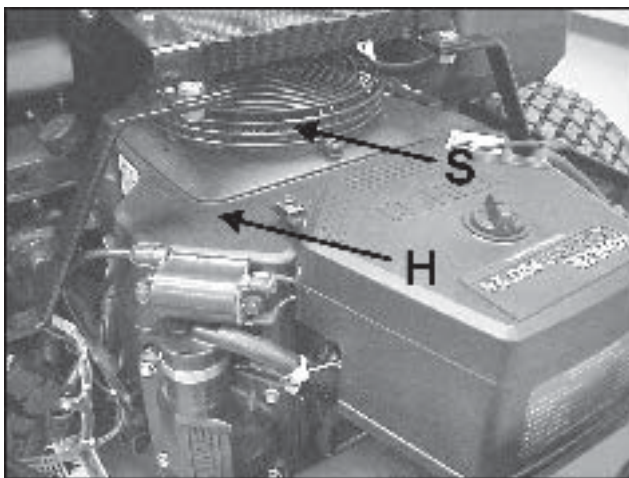
1. Unclamp end cover **X** and remove existing cleaner elements.
2. Insert new elements **Y** and **Z** and replace cover. Ensure the breathing port **A** is pointing down and towards the front of the tractor.



ENGINE COOLING

Continued operation with a clogged cooling system will cause severe overheating and can result in engine damage.

- **Daily:** Clean air intake screen **S**.
- **Every 100 hours:** Clean cooling fins beneath blower housing **H** with reference to information in the engine manufacturer's manual.

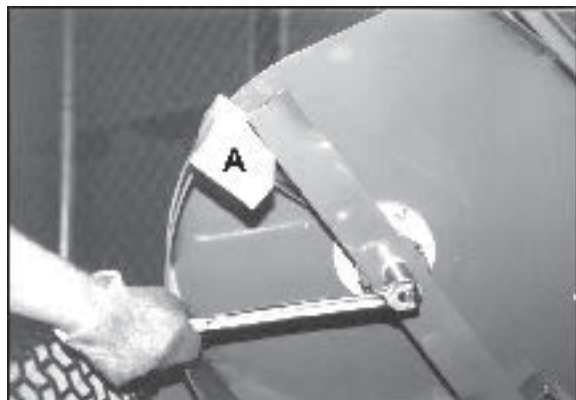




BLADE REMOVAL

Follow these instructions to prevent injury during blade removal:

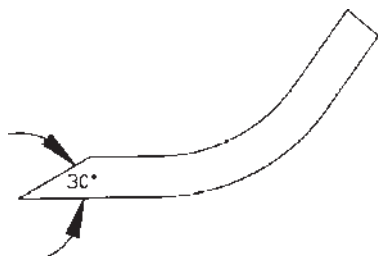
1. Loosen with a box wrench or a socket and long breaker bar. To gain additional leverage, slip a long pipe or thick-walled tube over breaker bar or wrench.
2. Insert wood block **A** as shown, with grain perpendicular to blade, to prevent blade from turning when loosening.
3. Wear thickly padded gloves. Keep hands clear of blade path. Blades may rotate when bolt releases.



SHARPENING

Blades may sharpened by filing or grinding.

- Inspect blades before sharpening.
- Replace bent or cracked blades.
- Replace blades when the lift portion has worn thin.
- Maintain cut angle at 30°.
- Do not overheat blades when sharpening.
- Always use Bunton blades. Use of another manufacturer's blades may be dangerous.



BLADE BALANCE

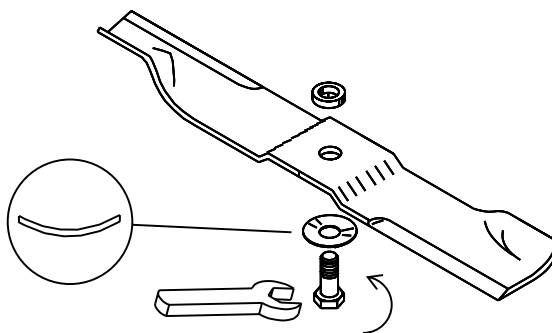
Blade balance must be maintained at 5/8 oz-in (19.4 g-cm) or less. Failure to keep blades balanced causes excess vibration, wear, and shortened life of most components of the machine.

To balance a blade:

1. Sharpen blade first.
2. Balance the blade at the center.
3. Attach a 1/8 oz (3.9 g) weight at a distance 5" (127 mm) from center on the light end. This should make the light end the heavy end:
 - If it does, the blade is balanced.
 - If does not, file or grind the heavy end until the addition of the weight makes the light end the heavy end.

BLADE INSTALLATION

1. Wear thickly padded gloves to prevent cuts from the sharp blade.
2. Insert the blade bolt, in order, through the conical washer (cup side toward the blade, as shown), the blade, and the blade spacer.
3. Install assembly on the blade spindle.
4. Torque the blade bolt to 70 ft-lbs.





HEIGHT OF CUT

The height of cut is set by moving height of cut pin **N** to the hole designated for the height of cut desired.

To change the height of cut:

1. Raise the deck to the highest position.
2. Move pin **N** to the selected hole.
3. Lower the deck until the lift lever is stopped by the pin.

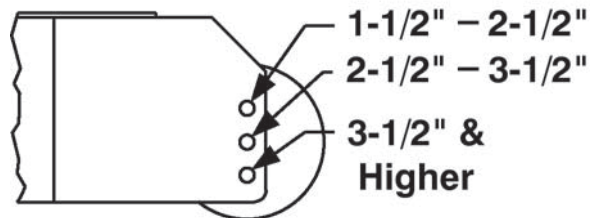
NOTES:

- Height of cut may vary due to the amount of tread on the tires, tire diameter or inflation pressure.
- For best results, adjust the rear deck rollers for the height of cut to be used (see below).



REAR DECK ROLLERS

The rear outside deck rollers are adjustable up and down to provide improved deck flotation and scalping protection at various heights of cut. They are not intended to ride continuously on the ground. Adjust no closer than 3/8" (10mm) to the ground.



Height of cut ranges for roller adjustment

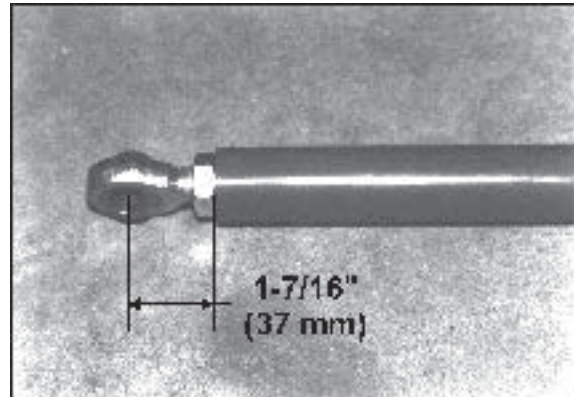


PUSH ARMS

The push arm rod ends must be adjusted evenly to:

- locate the deck perpendicular to the front-to-rear axis of the machine; and
- so the notch at the front of the engine deck clears the push arm bracket on the rear of the cutterdeck when the cutterdeck is raised to the transport position.

Adjust the rod end length to 1-7/16" (37 mm) to start. If any additional adjustment is required, adjust both rod ends so the same number of threads show.



BELT TENSION

All belts are tensioned by spring loaded idlers and do not require any adjustment, except the spring loaded 72" cutterdeck belt. Manual tension adjustment of the spring loaded 72" cutterdeck belt is as follows.

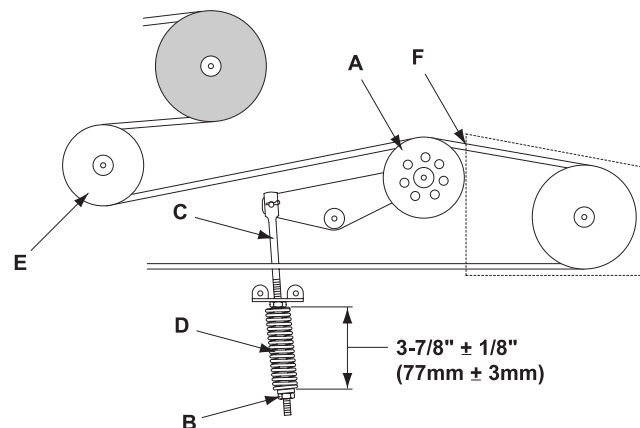
A single belt supplies power to the three blade spindles. Belt tension is maintained by a spring **D** loaded idler pulley. Proper belt tension is maintained with a minimum spring dimension of 3-7/8" (77mm).

Keep this area clean and periodically inspect the cutterdeck belt for abnormal wear and proper tension.

If the cutterdeck belt becomes worn, damaged, or stretched beyond use; Replace it.

Before removing the cutterdeck belt, the engine to cutterdeck (pto) belt must be removed from the center pulley.

1. Remove tension on the engine to cutterdeck belt at the engine and remove the belt from the deck pulley.
2. Decrease the tension on the idler pulley **A** by loosening the nut **B** on the idler rod **C**.



Reverse the procedure for installation of the new belt.

The stationary idler **E** is mounted to the deck. If the belt rubs on the belt cover, in the area shown **F** and the tension idler is adjusted to its maximum position, move the stationary idler to an appropriate mounting hole on the deck.

Increase Belt Tension:

To increase cutterdeck belt tension, turn nut **B** 1/4 turn until desired belt tension is reached.



DECK LEVELING 61"

- **Side Discharge:** The front of a side discharge deck should be slightly lower than the rear.
- **Mulching:** The front of a mulching deck should be slightly higher than the rear.

To level deck:

- a) Park the machine on a smooth, level surface. The deck may be set to any cutting height.
- b) Place a level on the deck, from front to rear. If the level is too short to reach all the way from front to rear, lay a straight edge on the deck first, then place the level on the straight edge.
- c) Lay a 1/8" spacer beneath the front of the level for the side discharge and under the rear for mulching.
- d) Adjust nuts **M** until the level's bubble is centered. Repeat for the other side of the deck.

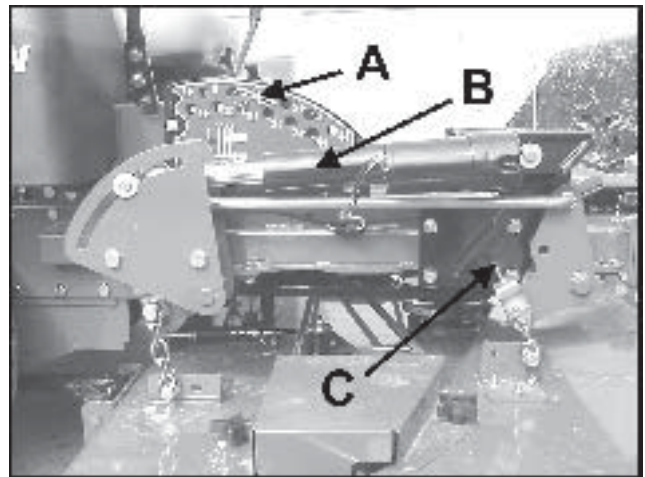


DECK LEVELING 72"

NOTE: These instructions are in regards to both sides of the deck.

To level deck:

1. Park the machine on a smooth, level surface. Remove the height of cut pin **A** and raise the cutterdeck to the 3" height of cut position.
2. Locate (2) 3" tall blocks just inside the front rollers and (2) 2-7/8" tall blocks just inside the rear rollers.
3. Lower the deck until it is resting on the blocks and there is plenty of float for the actuator **B**.
4. Loosen the jamnuts on the height of cut clips. Adjust the thread rolling screws **C** on the front and rear chains until the chains just become tight. Tighten the jamnuts against the clips.



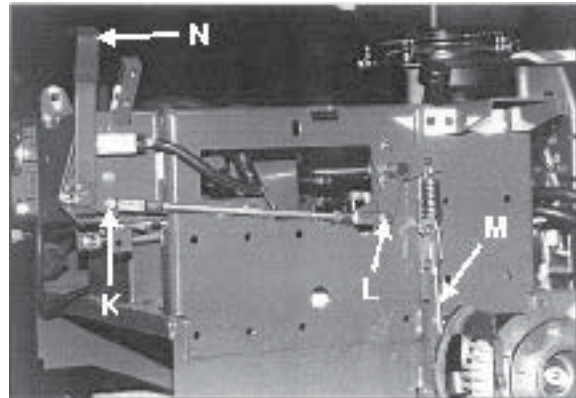


PARKING BRAKE

Start with parking brake **N** in the OFF position.

1. Adjust the parking brake rod to provide a distance of 14-3/16" between pin **K** and pin **L**.
2. Disconnect one end of rods **M** (at brakes on both sides of the machine).
3. Move the parking brake lever to the ON position.
4. Adjust rods **M** on each brake to be 3/4" short of connecting to the spring when all the slack is taken out of the brake linkage and brake lever **N**.
5. Move the parking brake to the OFF position and reconnect rods **M**.

This adjustment will cause the brake springs to stretch 3/4" when the brake is in the ON position to provide the correct parking brake force without overloading the brake.



Parking brake assembly (fuel tank, tire and deck not shown for clarity - brake in ON position).

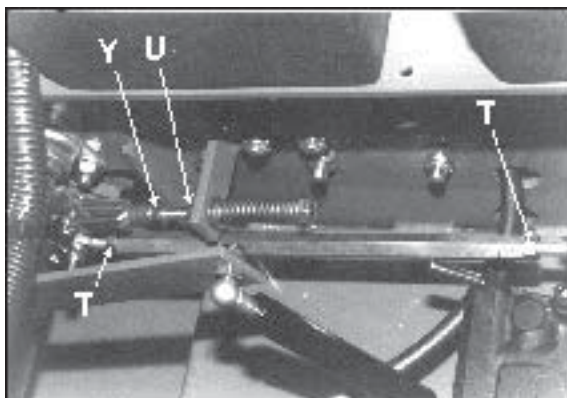
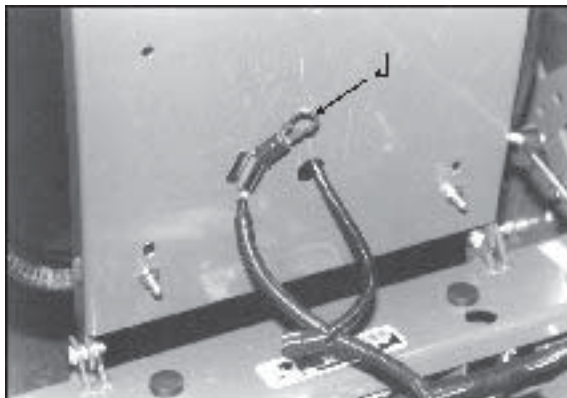


HYDROSTAT ADJUSTMENTS

A turnbuckle-style hydrostat neutral adjustment is provided.

Neutral:

1. Support the machine with the rear wheels off the ground. Use jackstands or equivalent support. Do not rely only on mechanical or hydraulic jacks.
2. Move the traction levers out into the neutral lock position and raise the seat.
3. Disconnect the seat switch and temporarily connect the two terminals with jumper wire **J** as shown.
4. Start the engine and run at low speed.
5. Loosen jam nuts **T** at both ends of the turnbuckle.
6. Rotate the turnbuckle until the corresponding wheel stops turning. Lock the turnbuckle jam nuts. Run the engine up to high idle to check the adjustment. Readjust if necessary.
7. Repeat steps 5 and 6 for the opposite side.
8. Remove the jumper wire and reconnect the seat switch.



Right side adjustments
(wiring harness and seat rod removed for clarity)

Reverse Return:

1. Move traction levers out to the neutral lock position and raise the seat.
2. Locknut **U** should be run on the bolt as far as it will go.
3. Loosen jam nut **Y**. Adjust the clevis yoke by turning the head of the bolt until the clevis pin just makes contact with the rear of the slot in the lever it connects with. Tighten jam nut **Y**.
4. Repeat steps 2 and 3 for the opposite side.

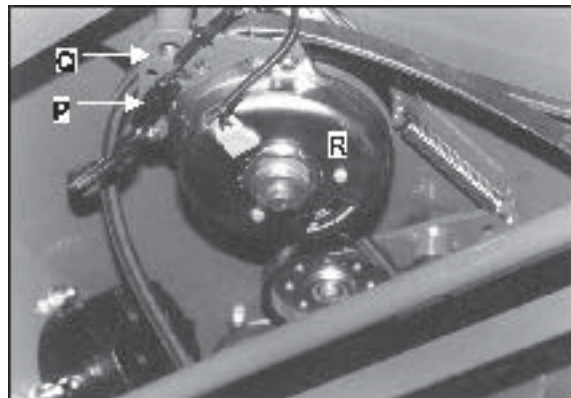
NOTE: A slight creep in reverse is acceptable provided the wheel does not turn and the hydrostat pump does not whine when the parking brake is on.



Note: Always use Bunton replacement belts, not general purpose belts. Bunton belts are specially designed for use on commercial mowers and will normally last longer.

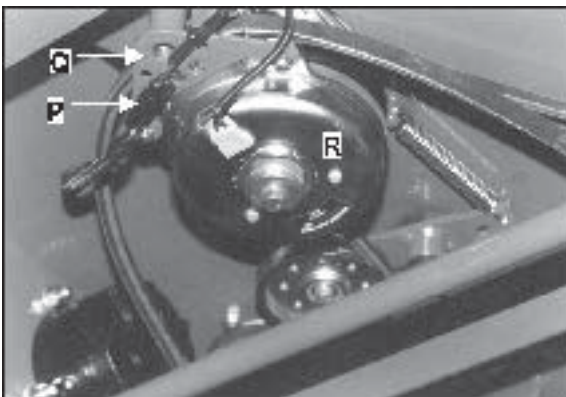
ENGINE-CUTTERDECK (PTO) BELT

1. Set the cutterdeck in the lowest height-of-cut position.
2. Attach a short extension to a 3/8" drive ratchet. Insert the ratchet extension into the square hole in the idler arm and use the ratchet to rotate the idler assembly enough to remove the belt. Remove the belt from the idlers and center cutterdeck pulley. Push belt back under engine deck.
3. Disconnect the electric clutch from the wire harness at plug **P**.
4. Remove the carriage bolts securing torque restraint **Q** to clutch **R**. Remove torque restraint.
5. Remove old belt from the machine.
6. Install a new belt by performing the these steps in reverse order.



PUMP-DRIVE BELT

1. Remove engine-cutterdeck belt (see engine-cutterdeck belt replacement).
2. Attach an extension to a 3/8" drive ratchet. Insert the ratchet extension in the square hole of the pump drive idler arm. Use the ratchet handle to rotate it enough to remove the pump drive belt.
3. Install a new pump drive belt in the same manner as it was removed.
4. Re-install engine-cutterdeck belt (see engine-cutterdeck belt replacement).





61" CUTTERDECK BELT

1. Set the cutterdeck in the lowest height-of-cut position.
2. Remove the engine-cutterdeck belt from the deck idlers and pulley (see engine-cutterdeck belt replacement). Push it aside but don't remove it from the machine.
3. Run the cutterdeck belt off the idler as shown. Remove it from the deck.
4. Install the new belt by performing these steps in reverse order. Take care to get the new belt on the correct side of the belt guides.
5. Re-install engine-cutterdeck belt (see engine-cutterdeck belt replacement).



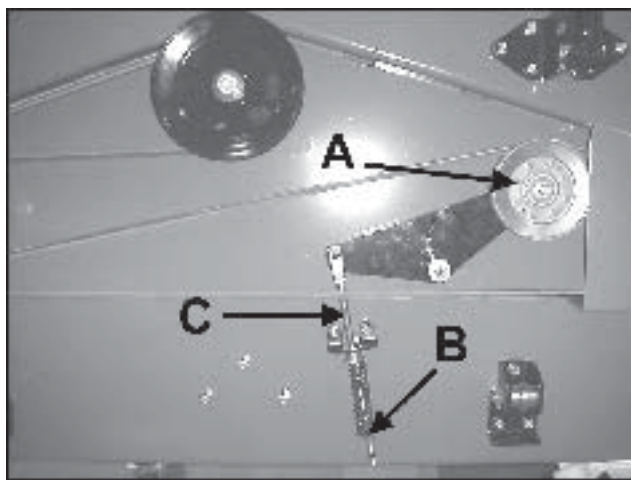
72" CUTTERDECK BELT

Before removing the blade to cutterdeck belt, the engine to cutterdeck (pto) belt must be removed from the center pulley.

1. Decrease the tension on the idler pulley **A** by loosening the nut **B** on the idler rod **C**.
2. Replace the belt on the engine to cutterdeck and replace the tension.

Increase Belt Tension:

To increase cutterdeck belt tension, turn nut **B** 1/4 turn until desired belt tension is reached.





POWER UNITS

ENGINE:

Construction: Aluminum block with cast-in cast iron sleeves. Aluminum head.

Configuration: 4-stroke, vertical shaft, V-twin cylinder, overhead valve, air-cooled, or electronic fuel injection.

DRIVE SYSTEM:

Full hydrostatic pump and wheel motor combination for independently controlled drive wheels.

Pump: Hydrogear BDP-10L 10cc variable displacement piston pump.

Motors: Parker/Ross 15 cu.in. displacement MB series. Direct drive 1-1/4" (31.8mm) diameter output shaft.

Turn Radius: 0"

OPERATOR PRESENCE INTERLOCK SYSTEM:

Start: The PTO (blades) must be off, traction levers in neutral lock, and parking brake on for engine to crank.

Run: Operator must be in seat to take parking brake off, to move traction levers out of the neutral lock position, or to turn the PTO (blades) on or the engine will kill. The parking brake must be off for the traction levers to move out of the neutral lock position.

The operator may leave the seat with the engine running if the parking brake is on, the PTO (blades) is off, and the traction levers are in the neutral lock position. A time delay eliminates annoying engine cutout from operation over rough terrain.

CONTROLS:

Throttle; choke; power takeoff (PTO) clutch switch; traction levers; parking brake lever; lift lever.

FUEL SYSTEM:

One tank on each side of operator, each with a shutoff (1/4 turn). Total capacity 12 gallons (46 liters). Fuel selector/shutoff switch on front panel (1/4 turn). Electronic fuel pump and pressure regulator. Replaceable fuel filters.

MAXIMUM GROUND SPEEDS:

Forward: 8 mph (12.9 km/h)

Reverse: 4 mph (6.4 km/h)

WHEELS & TIRES:

Drive wheels: 24x12.0-12 4-ply turf tread tires

Casters: 61" Deck 13x5.00-6 4-ply rib tread tires
72" Deck 13x6.50-6 4-ply rib tread tires

Pressure: 14 p.s.i. (1 kg/cm²)

BRAKING:

Hayes disc type parking brakes. Spring applied for overload protection.

SEAT:

High back, foam padded suspension seat with standard armrests. Fore and aft adjusters, hinged for easy tilt-up access to pumps and battery. Prop rod to hold in up position. Internally mounted seat switch.

WEIGHT:

1025 lbs (465 kg) with 61" cutterdeck.

1315 lbs (596 kg) with 72" cutterdeck.

SPECIFIC TORQUES

BLADE BOLT TORQUE: 70 FT-LBS (95 Nm)

WHEEL HUB NUTS: 175 FT-LBS (237 Nm)

ENGINE CRANKSHAFT BOLT: 50 FT-LBS (68 Nm)



BZT 2000 EFI Series

SPECIFICATIONS

ENGINE	
MODEL NUMBERS	642230, 642231
MANUFACTURER	Kohler
MODEL	CV26S
CYLINDERS	2
COOLING	Air
BORE/STROKE	3.27 X 2.64" (83 X 67 mm)
DISPLACEMENT	41 cu.in. (725 cc)
COMPRESSION	9:1
OUTPUT POWER	26 hp (14.2 kw) @ 3800 rpm
OUTPUT TORQUE	41.8 ft-lb (56.7 J) @ 2200 rpm
LUBRICATION	FULL PRESSURE
GOVERNOR	Mechanical
AIR CLEANER	Heavy Duty Dual Element
IGNITION SYSTEM	Electronic
CHARGING SYSTEM	15 amp, regulated
BATTERY	BCI group U1
FUSES	Main 30A ECU 20A Fuel Pump 10A
FUEL CONSUMPTION @ MAX LOAD/ SPEED	1.7 gal./hr (6.5 l/hr)

FLUID CAPACITIES	QUANTITY	TYPE	FILTERS
FUEL	12.0 gal. (46 l)	REGULAR, UNLEADED GASOLINE	REPLACEABLE
ENGINE OIL	2.1 qts (2 l)	SAE 10W30	SPIN-ON REPLACEABLE
HYDRAULIC OIL	2.6 qts (2.46 l)	SAE 15W40 MOTOR OIL SAE 20W50 MOTOR OIL 15W50 SYNTHETIC	10 MICRON SPIN-ON REPLACEABLE



CUTTERDECKS		
MODEL NUMBER	642230	642231
TYPE	Side Discharge	Side Discharge
CUTTING WIDTH	61" (155 cm)	71.5" (181 cm)
WIDTH (CHUTE UP)	62" (157 cm)	72.5" (184 cm)
WIDTH (CHUTE DOWN)	73.0" (185 cm)	84.0" (213 cm)
NUMBER OF CUTTING UNITS	3 high lift blades (low lift optional)	3 high lift blades (low lift optional)
BLADE LENGTH	21.0" (53 cm)	24.5" (62 cm)
BLADE THICKNESS	0.25" (6.35 mm)	0.25" (6.35 mm)
TIP SPEED	18235 ft/min 5557 m/min	18441 ft/min 5621 m/min
DAILY PRODUCTION (8 hr @ 6 mph)	Up to 29.5 acres (11.9 ha)	Up to 34.7 acres (14.0 ha)

CONSTRUCTION:

Fabricated and welded or bolted 10-gauge, double-layer steel top with 7-gauge side skirts. Full floating design.

CUTTERDECK DRIVE SYSTEM:

Electric clutch/brake drives belt directly from engine to center spindle of cutterdeck. No twists in drive belt.

SPINDLES:

Top mounted and maintenance free, with 1" shaft in precision machined, ductile iron housing

ANTI-SCALP ROLLERS:

61" Cutterdecks - 7 Rollers
72" Cutterdecks - 6 Rollers

CUTTING HEIGHT & PRODUCTION:

Height: Spring assisted lift lever allows easy setting of cut heights from 1-1/2" to 4-1/2" in 1/4" increments. "Set and forget" feature allows height of cut to be set and returned to without searching from operator position.

SPECIFIC TORQUES:

BLADE BOLT TORQUE: 70 FT-LBS (95 Nm)
WHEEL HUB NUTS: 225 FT-LBS (237 Nm)
ENGINE CRANKSHAFT BOLT: 50 FT-LBS (68 Nm)



**BZT 2000
EFI Series**

PARTS SECTION

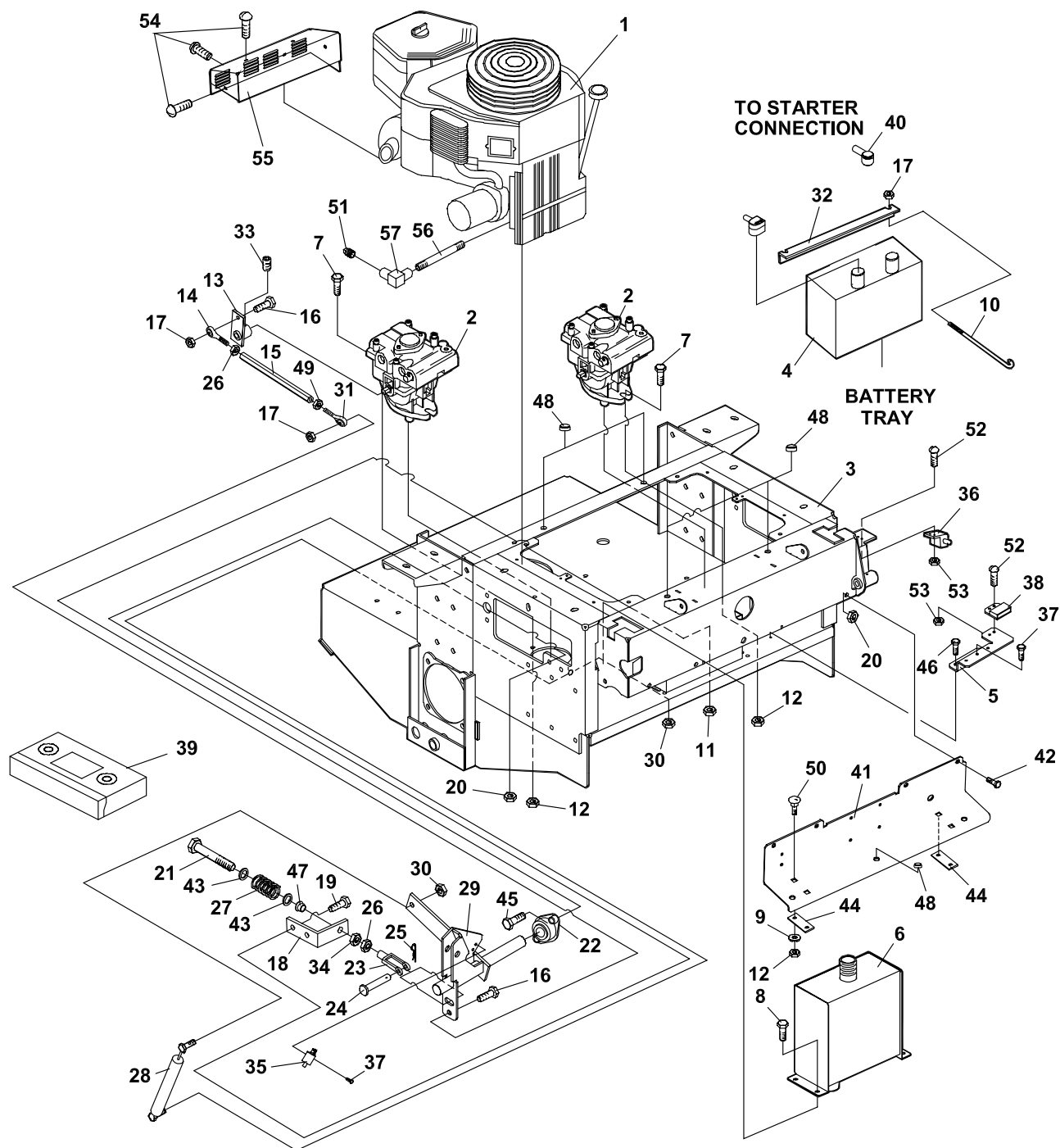
PARTS SECTION

UPPER ENGINE DECK ASSY

BZT 2000
EFI Series



FIGURE 1





BZT 2000 EFI Series

UPPER ENGINE DECK ASSY

2722185-01

FIGURE 1

ITEM	PART NO.	DESCRIPTION	QTY	ITEM	PART NO.	DESCRIPTION	QTY
1-1	4114447	ENGINE-KOHLER CV26	1	1-42	64205-007	BLT-M10-1.5x20	4
	4114747	S-FILTER, SECONDARY AIR	1	1-43	64163-55	WASHER .328X.75X14 GA	4
	4114746	S-FILTER, PRIMARY AIR	1	1-44	2188146	STRIP, WEAR	2
	842502	FILTER-OIL	1	1-45	64123-15	BLT-HEX 3/8-16X3/4	8
	2722117	FILTER-LOW PRES FUEL	1	1-46	64152-23	SCREW 1/4-20X3/8	2
	970250	KIT-EFI FUEL FILTER	1	1-47	38304-02	S BRG FLGD PLASTIC	2
	(INCLUDES QTY (2) 2722126 CLAMPS)			1-48	810149	BUMPER-RUBBER	7
1-2	2721615	PUMP-BDP 10L-119	2	1-49	64025-33	NUT- 5/16-24 LH	2
1-3	2720997	S ENGINE DECK W/LABS	1	1-50	64243-02	BLT-CRG M10-1.5X20	4
1-4	108055	BATTERY	1	1-51	69051-01	PLUG-PIPE 3/8"	1
1-5	2722293.7	BRACKET-RELAY	1	1-52	64152-46	SCR-SLT HH #10-24	2
1-6	2186211	S HYD RESERVOIR W/LAB	1	1-53	64025-15	NUT-HEX #10-24 KEPS	4
1-7	64263-013	BLT-FLG HD M10-1.5 X 30	4	1-54	64152-43	SCREW-#8-18X.50 STAP	6
1-8	64197-016	BLT-TR 3/8-16X1 1/2	4	1-55	2122289	GUARD-MUFFLER	1
1-9	64251-004	WSHR-M10	4	1-56	48024-17A	NIPPLE-PIPE 3/8 X 5	1
1-10	831861	BOLT-BENT BATT. HOOK	2	1-57	2690033-01	ELBOW-3/8 PIPE 90 DEG	1
1-11	64141-4	NUT-WLF 3/8-16	8				
1-12	64237-03	LOCKNUT-NYLON M10-1.5	12				
1-13	2186171.7	WLDMT-PUMP ARM	2				
1-14	38369-02	ROD END BALL JOINT	2				
1-15	2188140	TURNBUCKLE	2				
1-16	64205-003	BLT-MET M8-1.25 X 30	4				
1-17	64229-02	LOCKNUT-NYLON 5/16-18	4				
1-18	2182405.7	BRKT-REVERSE RETURN	2				
1-19	A1104057	BLT-M10-1.50 X 25	4				
1-20	64246-03	WIZ NUT-MET M10-1.5	8				
1-21	64123-205	BLT-HEX 5/16-24 X 4	2				
1-22	2188145	BEARING-SELF ALIGNED	4				
1-23	38020N	CLEVIS-YOKE PLATE	2				
1-24	64188-02	PIN-CLEVIS 5/16 X 1	2				
1-25	64168-2	HAIRPIN COTTER	2				
1-26	64025-03	NUT-HEX 5/16-24	2				
1-27	2188139	SPRING-COMPRESSION	2				
1-28	2721246	DAMPENER	2				
1-29	4112105.7	WLDMT-TRACTN CTRL RH	1				
	* 4112104.7	WLDMT-TRACTN CTRL LH	1				
1-30	64237-05	LOCKNUT-NYLON M8-1.25	4				
1-31	38369-01	ROD END BALL JOINT	2				
1-32	2182427.7	HOLD DOWN, BATTERY	1				
1-33	64192-03	SETSCR SQHD 5/16-24X5/8	2				
1-34	64229-08	LOCKNUT-NYLON 5/16-24	4				
1-35	108208	SWITCH, DBL POLE	2				
1-36	2188156	SWITCH NONO DBL POLE	1				
1-37	64197-015	BLT-TDFM #10-32X1/2 TRX	7				
1-38	2188154	MODULE-DELAY	1				
1-39	2810586	VIDEO	1				
1-40	2308095	COVER-TERMINAL	1				
1-41	2722071.7	PLATE-KICK	1				

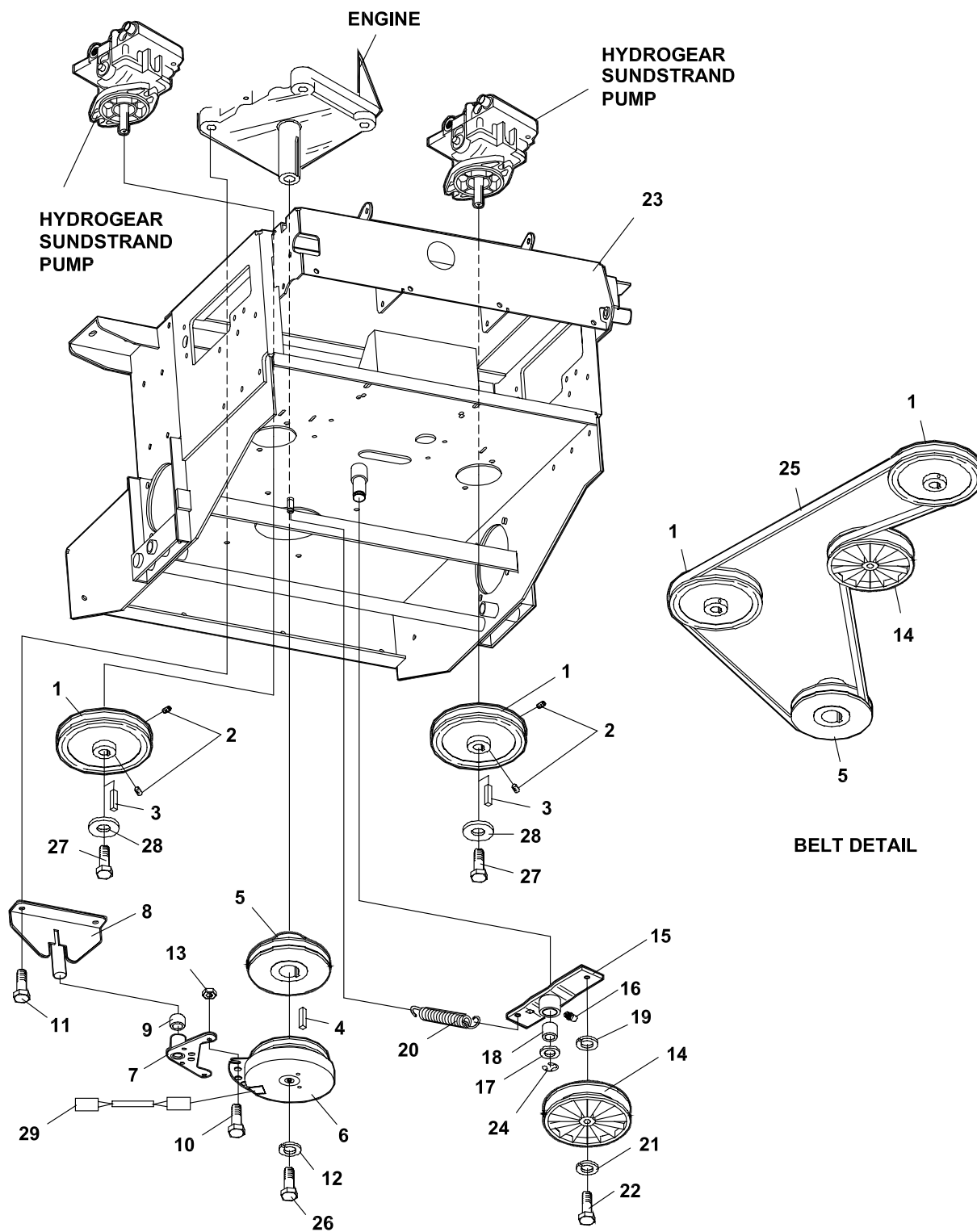
*NOT ILLUSTRATED

LOWER ENGINE DECK ASSY/CLUTCH

BZT 2000
EFI Series



FIGURE 2



TORQUE TO 50 FT/LBS +/-10%



BZT 2000 EFI Series

LOWER ENGINE DECK ASSY/CLUTCH

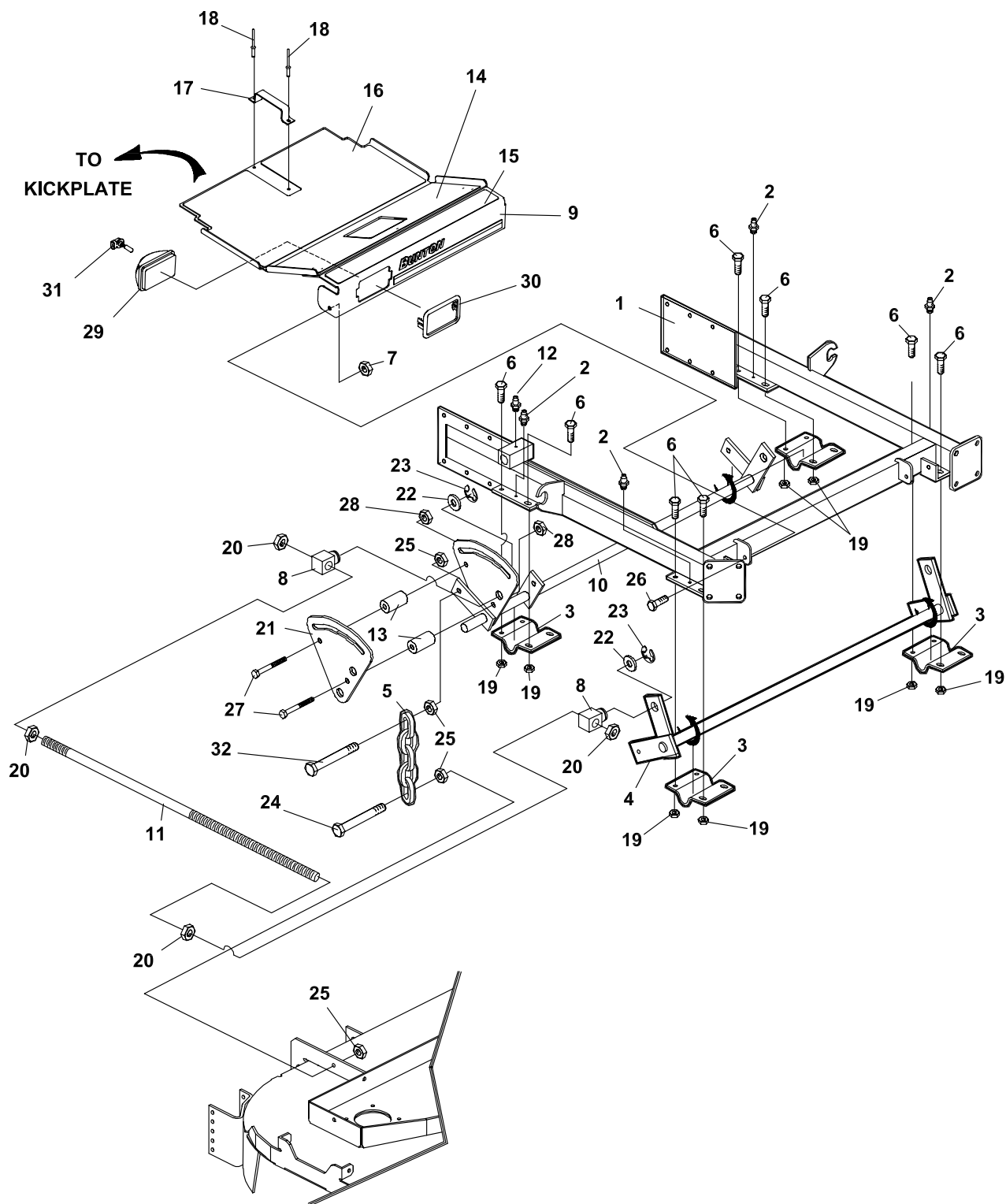
2722185-02

FIGURE 2

ITEM	PART NO.	DESCRIPTION	QTY	ITEM	PART NO.	DESCRIPTION	QTY
2-1	2722382	PUMP-PULLEY	2				
2-2	64044-1	SCREW-SET 1/4-20X1/4	4				
2-3	64238-03	KEY-MET 5mm SQX28mm	2				
2-4	64164-10	1/4X1/4X1 1/4 SQ END KEY	1				
2-5	2188188	PULLEY-4.25 ENGINE	1				
2-6	2721337	CLUTCH-ELECTRIC	1				
2-7	2721338.7	WLDMT-CLUTCH STOP	1				
2-8	2186147.7	WLDMT-BRKT CLUTCH	1				
2-9	38304-03	BEARING-PLASTIC	1				
2-10	64205-001	BLT-MET M8-1.25X20	2				
2-11	64197-005	BLT-TR 3/8-16X1 1/4	4				
2-12	64006-06	LCKWSHR-HELICAL 7/16	1				
2-13	64265-04	NUT-FL NYL LOCK M8-1.25	2				
2-14	2308000	PULLEY-IDLER 4.00 E.O.D.	1				
2-15	2306082.7	WLDMT-IDLER ARM	1				
2-16	85010N	STRAIGHT ZERK FITTING	1				
2-17	64163-65	WASHER 18 GA	1				
2-18	65103A	BEARING-BUSHING	1				
2-19	33148-01	SPACER	1				
2-20	38219	SPRING-TENSION	1				
2-21	64006-03	LOCKWASHER-HEL 3/8	1				
2-22	64123-21	BLT-HEX 3/8-24X1 1/4	1				
2-23	2720997	S ENGINE DECK WLABS	1				
2-24	64221-04	E-RING 0.875	1				
2-25	2188128	BELT-TRACTION DRIVE	1				
2-26	64123-155	BLT-HEX 7/16-20-3	1				
2-27	64205-013	BLT-MET M6-1X12	2				
2-28	64209-09	WSHR-CONICAL SPRING	2				
2-29	2720949	ASSY-CLUTCH WIRE	1				



FIGURE 3





BZT 2000 EFI Series

CRADLE ASSEMBLY-61"

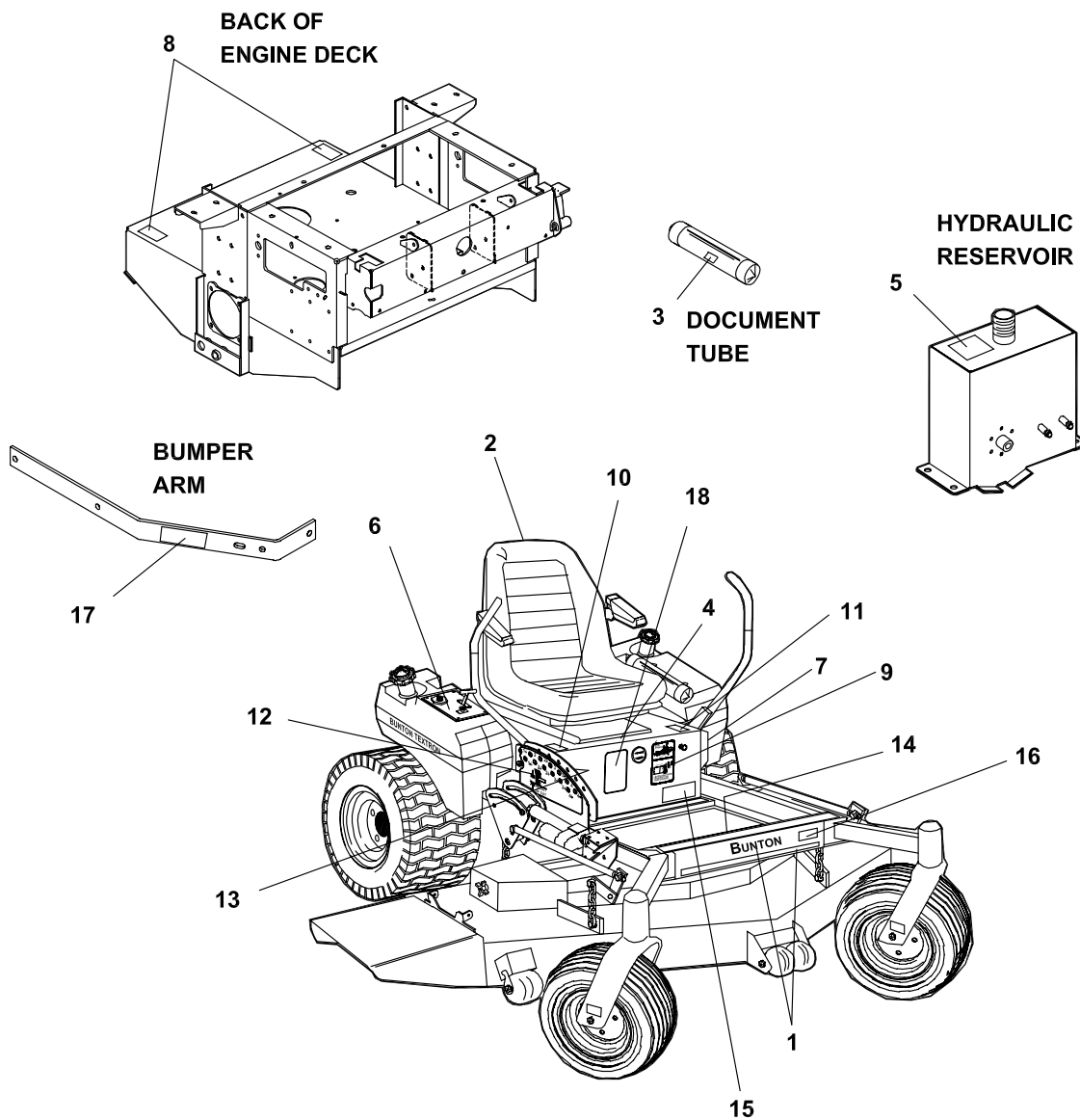
2722185-03

FIGURE 3

ITEM	PART NO.	DESCRIPTION	QTY	ITEM	PART NO.	DESCRIPTION	QTY
3-1	2721968.5	WLDMT-CRADLE	1				
3-2	85051	ZERK	6				
3-3	2182356.7	BRKT-SHAFT HANGER	4				
3-4	2186120.5	WLDMT-DECK HANGER	1				
3-5	2188127	CHAIN-6.35 5 LINKS	4				
3-6	64263-013	BLT-FLG HD M10-1.5 X 30	15				
3-7	64237-03	LCKNT-NYLN M10-1.5	2				
3-8	2188136	SWIVEL	4				
3-9	2721868	S FOOT PLATE W/LABS (INCLUDES ITEMS 14-18)	1				
3-10	2186192.5	WLDMT-ELECTRIC LIFT	1				
3-11	2183052	ROD-LIFT	2				
3-12	85010N	ZERK STRAIGHT FTTG	1				
3-13	2183077	SPACER-DECKLIFT	2				
3-14	2721860	MAT-MIDDLE	1				
3-15	2721861	MAT-UPPER	1				
3-16	2721859	MAT-LOWER	1				
3-17	32418-04	HANDLE W/SLOT	1				
3-18	64215-07	RIVET-POP IFI #84	2				
3-19	64265-05	NUT-FL NYL LOCK M10-1.5	15				
3-20	64025-21	NUT-HEX 5/8-11	8				
3-21	2182547.5	ARM-DECKLIFT ELECTRIC	1				
3-22	64163-65	WHSR .890X18 GA	5				
3-23	64221-04	E-RING .875	4				
3-24	64205-029	BLT-MET M12-1.75X40	4				
3-25	64246-04	NUT-WHIZ M12-1.75	16				
3-26	64205-007	BLT-MET M10-1.5X20	2				
3-27	64205-031	BLT-MET M12-1.75X90	2				
3-28	64237-06	LOCKNUT-NYLON M12-1.75	2				
3-29	3010329	LAMP-FLOOD 12V (INCLUDES ITEMS 30-31)	1				
3-30	3010330	S-BEZEL-SNAP MOUNTING	1				
3-31	5003693	S-BULB-894 12V	1				
3-32	64205-060	BLT-MET M12X1.75X50	4				



FIGURE 4





BZT 2000 EFI Series

2722185-04

DECALS

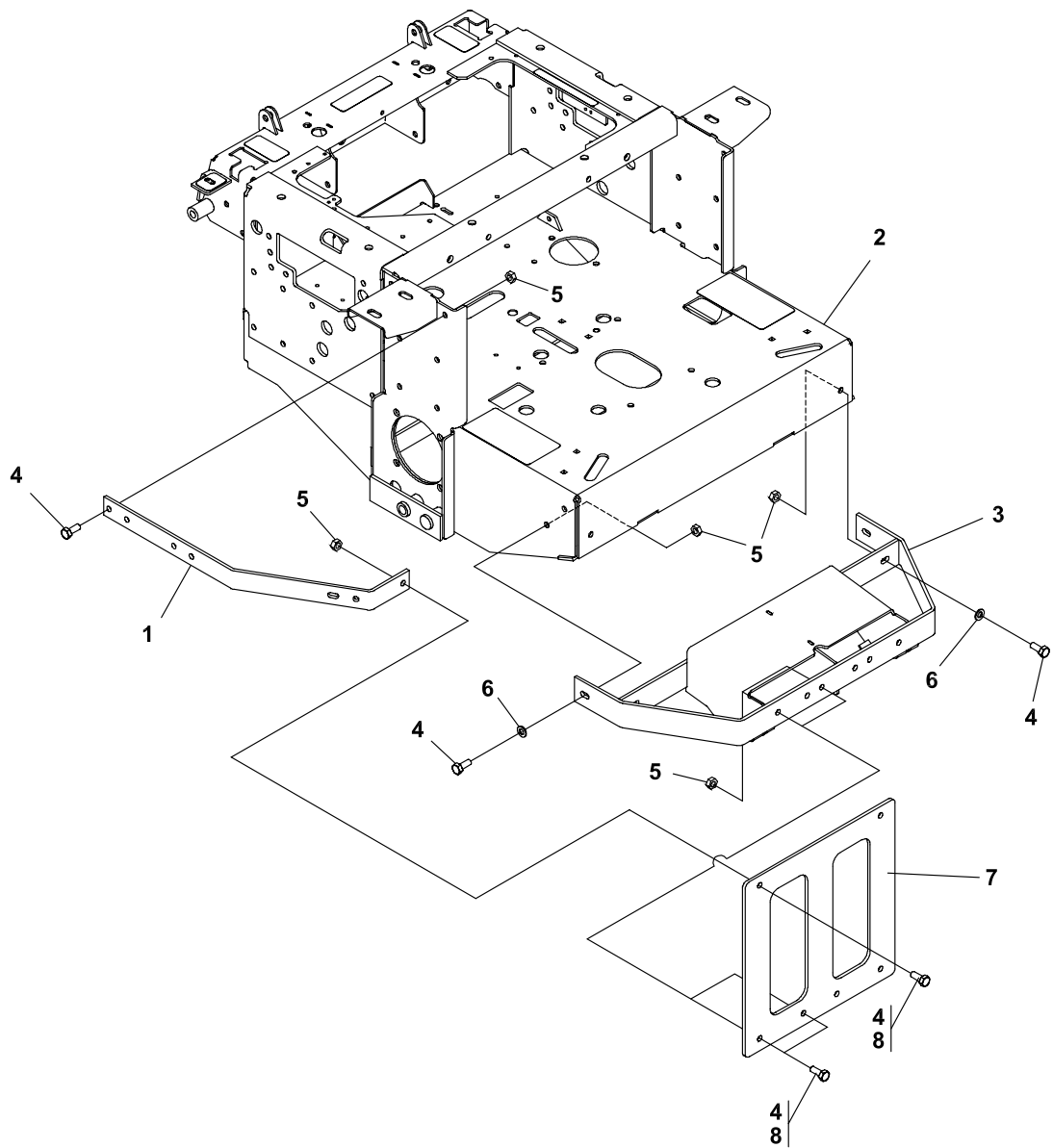
FIGURE 4

ITEM	PART NO.	DESCRIPTION	QTY	ITEM	PART NO.	DESCRIPTION	QTY
4-1	2721992	LBL-BUNTON W/STRIPE	1				
4-2	2721886	LABEL-BUNTON TEXTRON	1				
4-3	2000735	LABEL-OPER MAN	1				
4-4	2000590	LABEL, WARN BATTERY	1				
4-5	2000691	LABEL - HYDR OIL FILL	1				
4-6	2721555	LABEL-CONTROL PANEL	1				
4-7	2000693	LABEL - PARK BRAKE	1				
4-8	2000698	LABEL(DBL) - FUEL/LEAKS	2				
4-9	4114158	LABEL-TIRES	1				
4-10	2000700	LABEL - RH TRACTION	1				
4-11	2000701	LABEL - LH TRACTION	1				
4-12	2000790	LABEL - HEIGHT OF CUT	1				
4-13	2000791	LABEL - INSIDE H.O.C.	1				
4-14	2000695	LABEL - WARN/USING	1				
4-15	2722455	LABEL-FUEL	1				
4-16	2722613	LBL-BZT 2260EFI DIE CUT	1				
4-17	2722557	LBL-HIGH PRESSURE FUEL	1				
4-18	340830	DECAL, CAUTION	1				

BUMPER

FIGURE 5

**BZT 2000
EFI Series**





BZT 2000 EFI Series

2722185-05

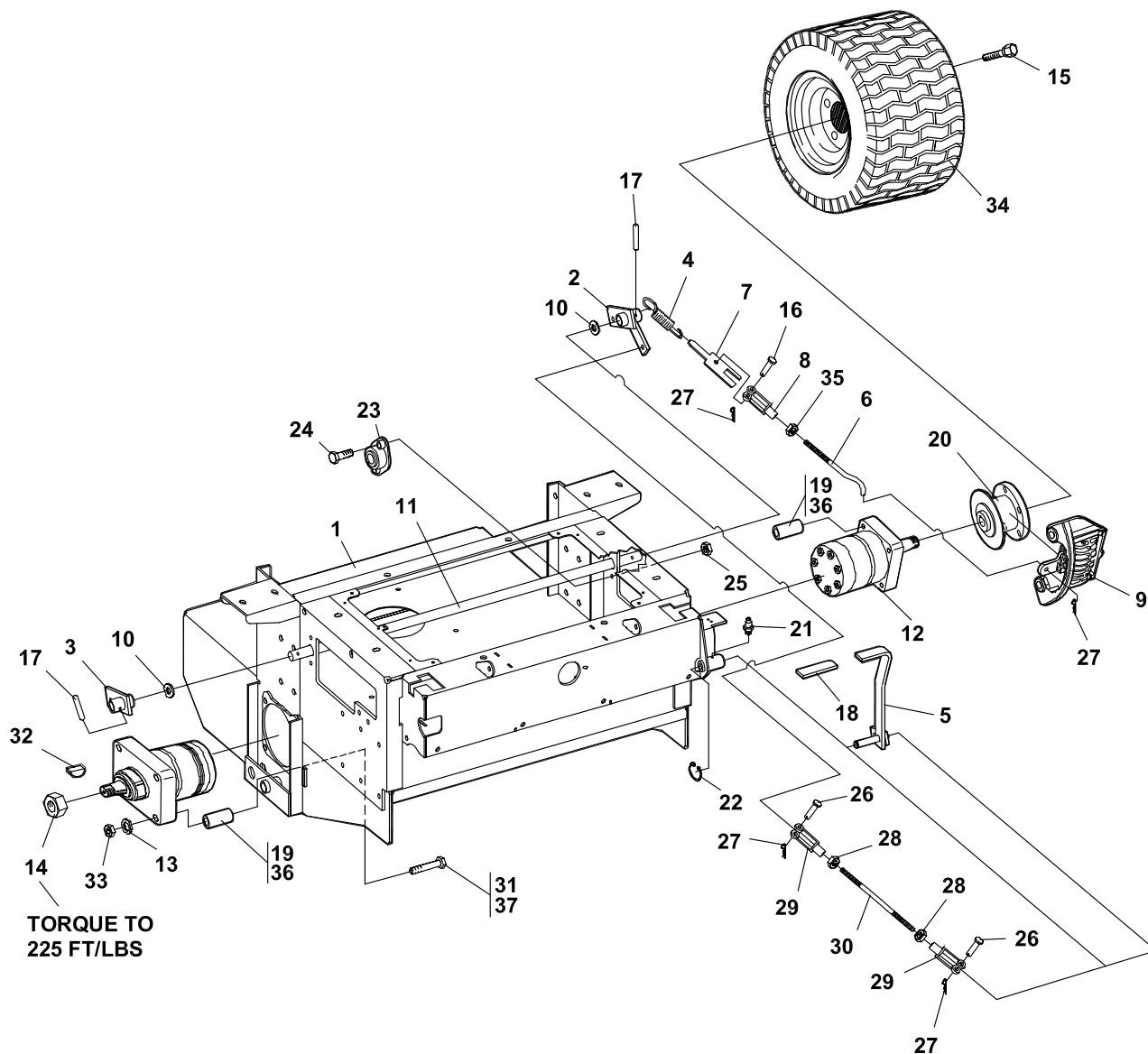
BUMPER

FIGURE 5

ITEM	PART NO.	DESCRIPTION	QTY	ITEM	PART NO.	DESCRIPTION	QTY
5-1	2722296.7	ARM-BUMPER	2				
5-2	2720997	S ENG DECK W/LABS	1				
5-3	2721324.7	WLDMT-BUMPER	1				
5-4	64263-013	BLT-FLG HD M10-1.5 X 30 (QTY 6 USED ON 72") (QTY 12 USED ON 61")					
5-5	64265-05	NUT-FL NYL LOCK M10-1.5	10				
5-6	64251-004	WASHER-MET M10	4				
5-7	2721932.7	BRACE-VERTICAL (QTY 1 USED ON 61") (QTY 11 USED ON 72")					
5-8	64205-012	S BLT-MET M10-1.50X90 (USED ON 72" DECKS ONLY)	6				



FIGURE 6





BZT 2000 EFI Series

2722185-06

BRAKES/REAR WHEEL

FIGURE 6

ITEM	PART NO.	DESCRIPTION	QTY	ITEM	PART NO.	DESCRIPTION	QTY
6-1	2720997	S ENGINE DECK WLABS	1	6-29	38020-01	CLEVIS YOKE 3/8 PLATE	2
6-2	2186128.7	WLDMT-BRAKE ARM LH	1	6-30	2183064	ROD, BRAKE	1
6-3	2186142.7	WLDMT-BRAKE ARM RH	1	6-31	64223-10	SCH CAPSCR M12-1.75X150 8 (USED ON 72" DECKS ONLY)	
6-4	128102	SPRING-EXTENSION	2	6-32	64164-08	S-KEY / WHEEL MOTOR	2
6-5	2186143.7	WLDMT-BRAKE ARM LVR	1	6-33	64207-07	NUT-HEX M12-1.75	8
6-6	4115019	ROD-BRAKE CONTROL	2	6-34	2722001-01	RIM ASSY W/VALVE STEM	2
6-7	2182387.7	GUIDE-SPRING	2		2722001-02	TIRE 24x12.0-12	2
6-8	38020N	CLEVIS-YOKE PLATE	2				
6-9	2188147	ASSY BRAKE CW (LH)	1	6-35	64025-03	NUT-HEX 5/16-24	2
	* 2188148	ASSY BRAKE CCW (RH)	1				
6-10	64163-06	WSHR-.768-.756 IDX14 GA A/R					
6-11	2183056	SHAFT-BRAKE	1				
6-12	2188126-01	MOTOR-ASSY HYDRAULIC	2				
6-13	64006-05	LCKWHSR-HELICAL 1/2	8				
6-14	64025-31	NUT1-20 UNSLOTTED TRW	2				
6-15	64220-02	BOLT-WHEEL 7/16-20	10				
6-16	64188-02	PIN-CLEVIS 5/16X1	2				
6-17	64061-25	ROLL-PIN 1/4X1 1/4	2				
6-18	2188155	GRIP, 1/4X1X4 1/2	1				
6-19	2183063-04	SPCR-19.05ODX12.97IDX80 8 (USED ON 72" DECKS ONLY)					
6-20	2188149	HUB-WHL & DISC	2				
6-21	85010N	STRAIGHT ZERK FITTING	1				
6-22	64144-34	SNAP RING .50	1				
6-23	2188145	BRG-.75ID BRNZ SLF ALIGN	2				
6-24	64123-15	BLT-HEX 3/8-16X3/4	4				
6-25	64141-4	NUT-WLF 3/8-16	4				
6-26	64188-03	S PIN CLEVIS 3/8X1 1/8	2				
6-27	64168-2	HAIRPIN COTTER	6				
6-28	64025-04	NUT-HEX 3/8-24	2				

SERVICE PARTS FOR 2188147 AND 2188148 BRAKE ASSEMBLIES QTY/ASSY

2188147-01	BRACKET-MACHINED	1
2188147-02	PAD-CAM SIDE	1
2188147-03	PAD-SUPPORT	1
2188147-04	SPRING-LEVER RETAINER	1
2188147-05	HOUSING	1
2188147-06	CAM LH	1
2188147-07	PIVOT PIN	1
2188147-08	PAD-CARRIER SIDE	1
2188147-09	PAD-SUPPORT	1
2188148-01	*CAM RH	1

* NOT ILLUSTRATED

BRAKE ASSEMBLY BREAKDOWN

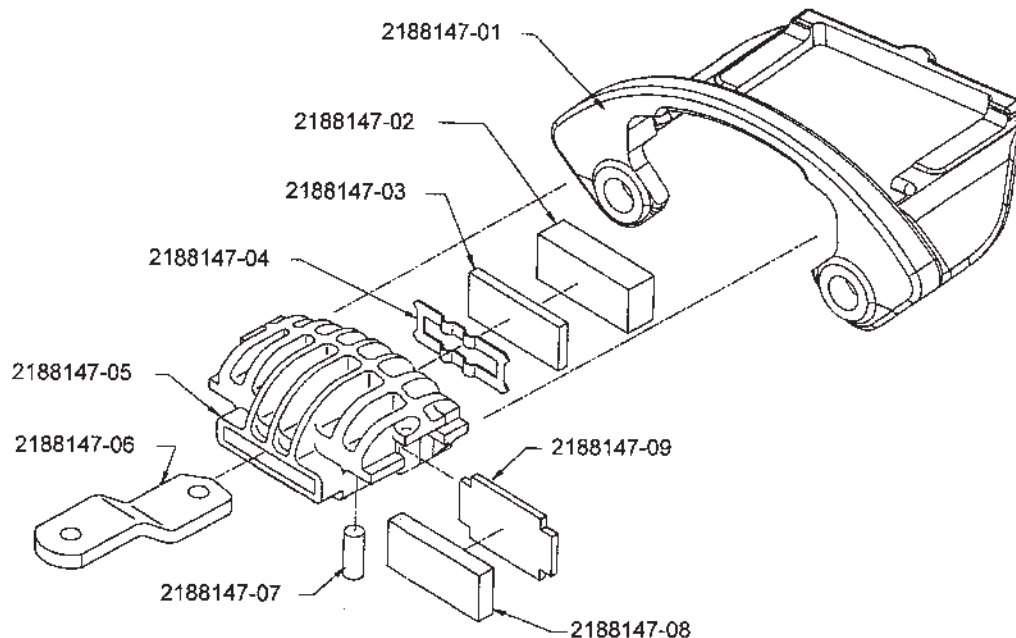
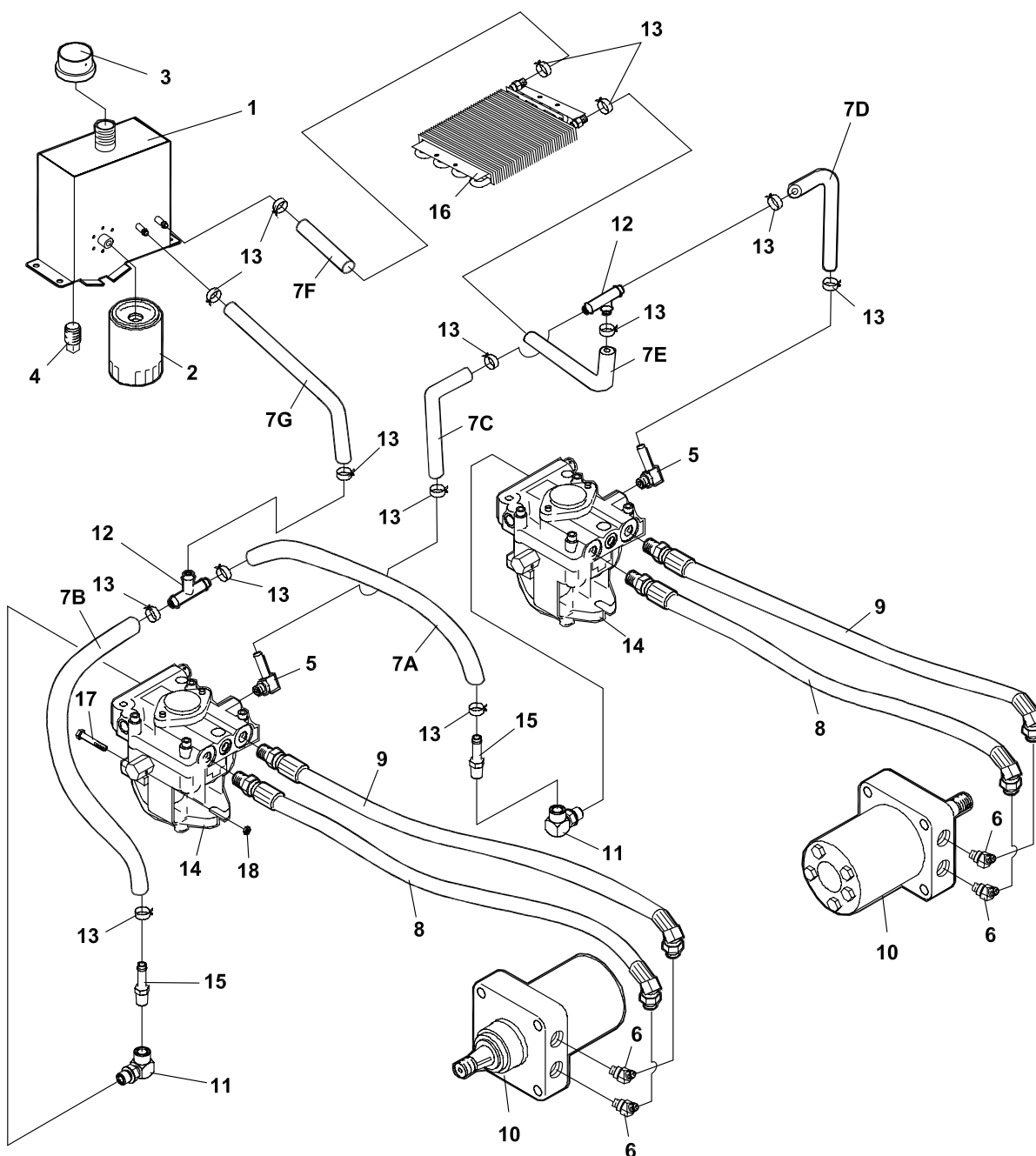




FIGURE 7





BZT 2000 EFI Series

2722183-07

HYDRAULICS

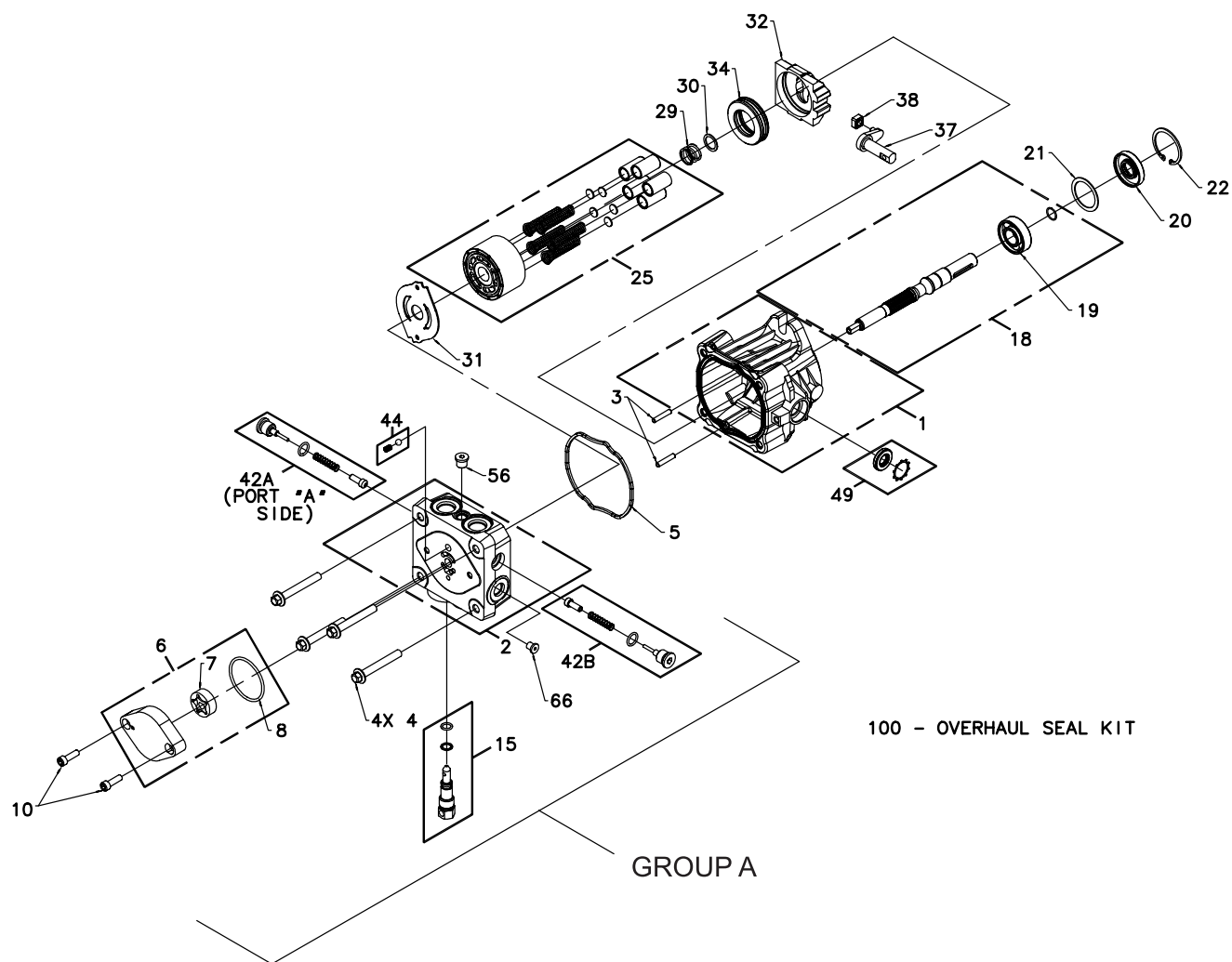
FIGURE 7

ITEM	PART NO.	DESCRIPTION	QTY
7-1	2186211	S HYD RESERVOIR W/LAB	1
7-2	2720396	FILTER 25 MICRON	1
7-3	69216.7	CAP-RESERVOIR	1
7-4	108029	PLUG-MAGNETIC	1
7-5	158058-04	FTG-90 BRB 9/16-18X.38	2
7-6	108205-03	ELBOW-MALE 45 37-ORB	4
(69053-05 IS A SERVICEABLE LENGTH OF 55")			
7-7A	69053-05	3/8 HIGH TEMP HOSE 22"	1
7-7B	69053-05	3/8 HIGH TEMP HOSE 19"	1
7-7C	69053-05	3/8 HIGH TEMP HOSE 9"	1
7-7D	69053-05	3/8 HIGH TEMP HOSE 26"	1
7-7E	69053-05	3/8 HIGH TEMP HOSE 6"	1
7-7F	69053-05	3/8 HIGH TEMP HOSE 29"	1
7-7G	69053-05	3/8 HIGH TEMP HOSE 5"	1
7-8	2188157-01	HOSE HYD ORB 37-22.38	2
7-9	2188157-02	HOSE HYD ORB 37-25.00	2
7-10	2188126-01	MOTOR-ASSY HYD	2
7-11	2690030-01	FTG9/16-18ORB X3/8BARB452	2
7-12	58026-01	3 WAY CONNECTOR 3/8	2
7-13	88042-04	CLAMP-HOSE 5/8	14
7-14	2721615	PUMP-BDP 10L-119	2
7-15	48386-04	FITTING-3/8 BARB 1/4 NPTF	2
7-16	2188173	OIL COOLER	1
7-17	64123-60	BLT-HEX 1/4-20 X 2	2
7-18	64229-01	LOCKNUT-NYLON 1/4-20	2

SAE PORT 'O' RING		
PART NUMBER	THREAD SIZE	AS-568#
158061-10	9/16-18	-906
158061-11	3/4-16	-908
158061-12	7/8-14	-910
158061-13	1-1/16-12	-912
158061-14	1-5/16-12	-916
158061-16	1-5/8-12	-920
158061-03	1-7/8-12	-924



FIGURE 8





BZT 2000 Series

HYDROGEAR PUMP

2722087-08

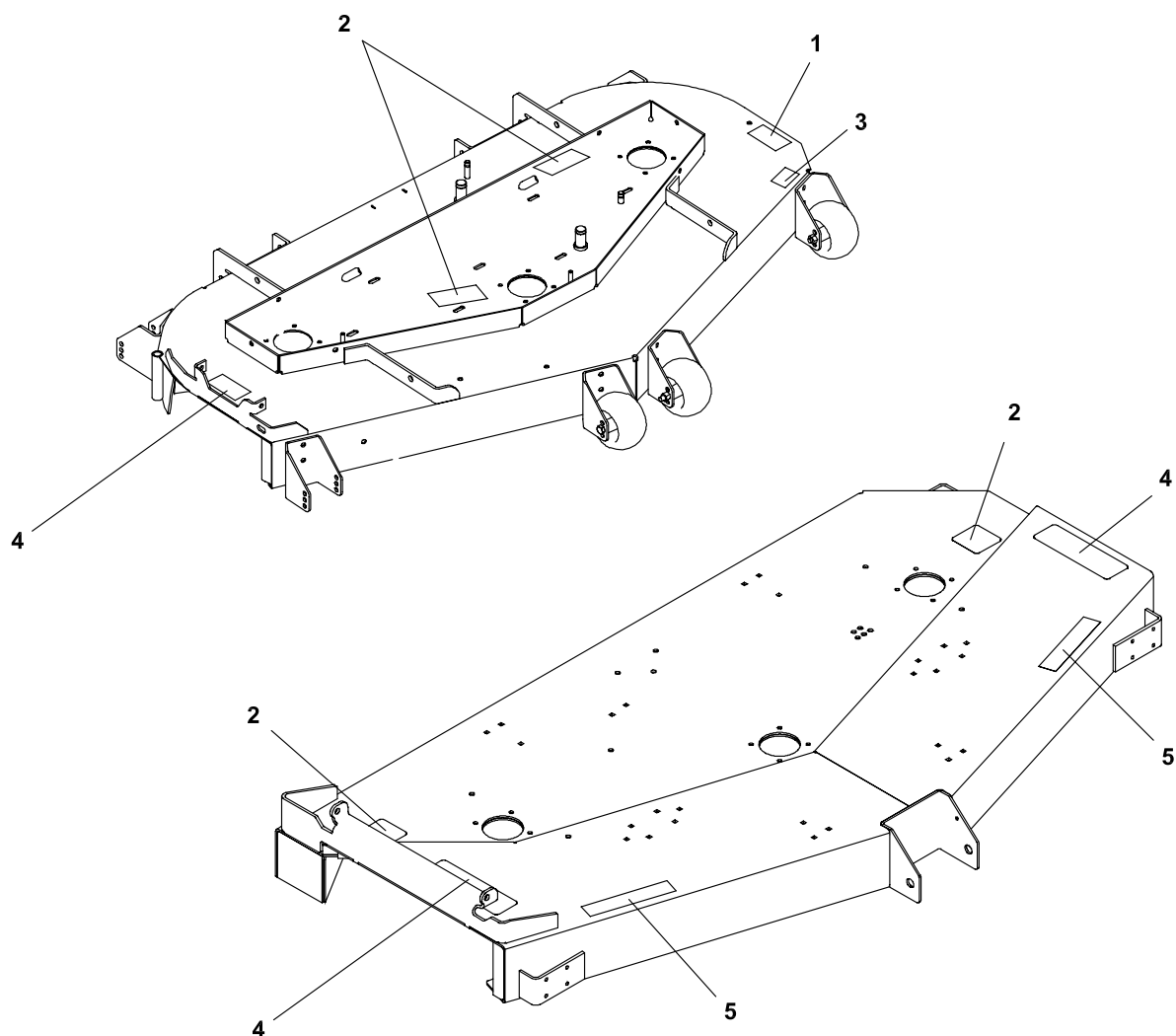
FIGURE 8

**2721615 PUMP-HYDRO RH ILLUSTRATED AS SHOWN EXCEPT GROUP A IS ROTATED 180°
AROUND THE CENTERLINE OF THE PUMP.**

ITEM	HYDROGEAR PART NO.	TEXTRON PART NO.	DESCRIPTION	QTY
8-1	70516	----	HOUSING KIT	1
8-2	70517	----	END CAP KIT	1
8-3	50641	----	STRAIGHT HEADLESS PIN	2
8-4	50969	2721615-01	FLANGE BOLT M8-1.25 X 60	4
8-5	51232	2721615-02	HOUSING O-RING	1
8-6	2513027	2721615-03	CHARGE PUMP KIT (STD)	1
8-7	50273	2721615-04	STD GEROTOR ASSEMBLY	1
8-8	9004101-1340	2721615-05	O-RING	1
8-10	50095	2721615-06	SOCKET HEAD M6-1.0 X 20	2
8-15	2513030	----	BYPASS VALVE KIT (BLANK)	1
8-18	70521	2721615-07	PUMP SHAFT KIT	1
8-19	50315	----	BALL BEARING 17 X 40 X 12	1
8-20	51161	----	LIP SEAL 17 x 40 x 12	1
8-21	50951	----	SPACER	1
8-22	50329	----	RETAINING RING	1
8-25	70331	2721615-08	CYLINDER BLOCK KIT	1
8-29	2003014	----	BLOCK SPRING	1
8-30	2003017	----	BLOCK THRUST WASHER	1
8-31	51246	2721615-09	VALVE PLATE	1
8-32	2003087	2721615-10	SWASHPLATE	1
8-34	50551	2721615-11	BALL THRUST BEARING	1
8-37	2003005	2721615-12	TRUNNION ARM	1
8-38	2000015	2721615-13	SLOT GUIDE	1
8-42A	2510027	2721615-14	CHECK VALVE KIT (.031")	1
8-42B	2510050	2721615-15	CHECK VALVE KIT (BLANK)	1
8-44	70403	2721615-16	CHARGE RELIEF VALVE KIT	1
8-49	2513043	2721615-17	TRUNNION SEAL/RETAINER KIT	1
8-56	9005110-4400	----	STRAIGHT THREAD PLUG	1
8-66	9005110-3100	----	5/16 SAE PLUG	1
8-100	70525	2721615-18	OVERHAUL SEAL KIT	1



FIGURE 9





BZT 2000 EFI Series

DECALS-CUTTERDECKS

2722185-09

FIGURE 9

ITEM	PART NO.	DESCRIPTION	QTY	ITEM	PART NO.	DESCRIPTION	QTY
9-1	2000572	LABEL-WARNING BLADES (USED ON 61" DECKS ONLY)	1				
9-2	2000577	LABEL, WARNING	2				
9-3	2000696	LBL - BLADE INSTALL (USED ON 61" DECKS ONLY)	1				
9-4	2000677	LABEL-DANGER/WARNING (USE QTY 2 ON 72" DECKS) (USE QTY 1 ON 61" DECKS)					
9-5	2000787	DECAL-NO STEP (USED ON 72" DECKS ONLY)	2				

KOHLER WIRE HARNESS

**BZT 2000
EFI Series**



FIGURE 10

2722185-10

ITEM	PART NO.	DESCRIPTION	QTY	ITEM	PART NO.	DESCRIPTION	QTY
10-1	2722316	HARNESS-WIRING	1				
10-2	148082-20	FUSE-20 AMP	2				
10-3	108061-13	CABLE-BATTERY	1				
10-4	158135-01	SWITCH-SEAT NO	1				
10-5	158136	WIRE-SEAT SWITCH	1				
10-6	48030N	HOUR METER ASSY	1				
10-7	2722227-02	CABLE-BATT W/CONDUIT (INCLUDES ITEMS 16 & 17)	1				
10-8	128010	KEY-SWITCH	1				
10-9	2722325	RELAY-40AMP SEALED	3				
10-10	2188154	MODULE-DELAY	1				
10-11	2188153	SWITCH-CLUTCH	1				
10-12	2721337	CLUTCH-ELECTRIC	1				
10-13	2720949	ASSY-CLUTCH WIRE	1				
10-14	108208	SWITCH-DBL POLE	2				
10-15	2188156	SWITCH-NONO DBL POLE	1				
10-16	112386	BOOT-BAT TERM POS	1				
10-17	2308095	COVER-TERMINAL	1				
10-18	2188172	HARNESS-JUMPER	2				
10-19	2722078	HARNESS-FUEL PUMP	1				
10-20	2721903	HARNESS-CONTROL PNL	1				
10-21	2721814	SWITCH-DECK HEIGHT	1				
10-22	2721815	SWITCH-LIGHT	1				



BZT 2000
EFI Series

2722185-10

KOHLER WIRE HARNESS

FIGURE 10

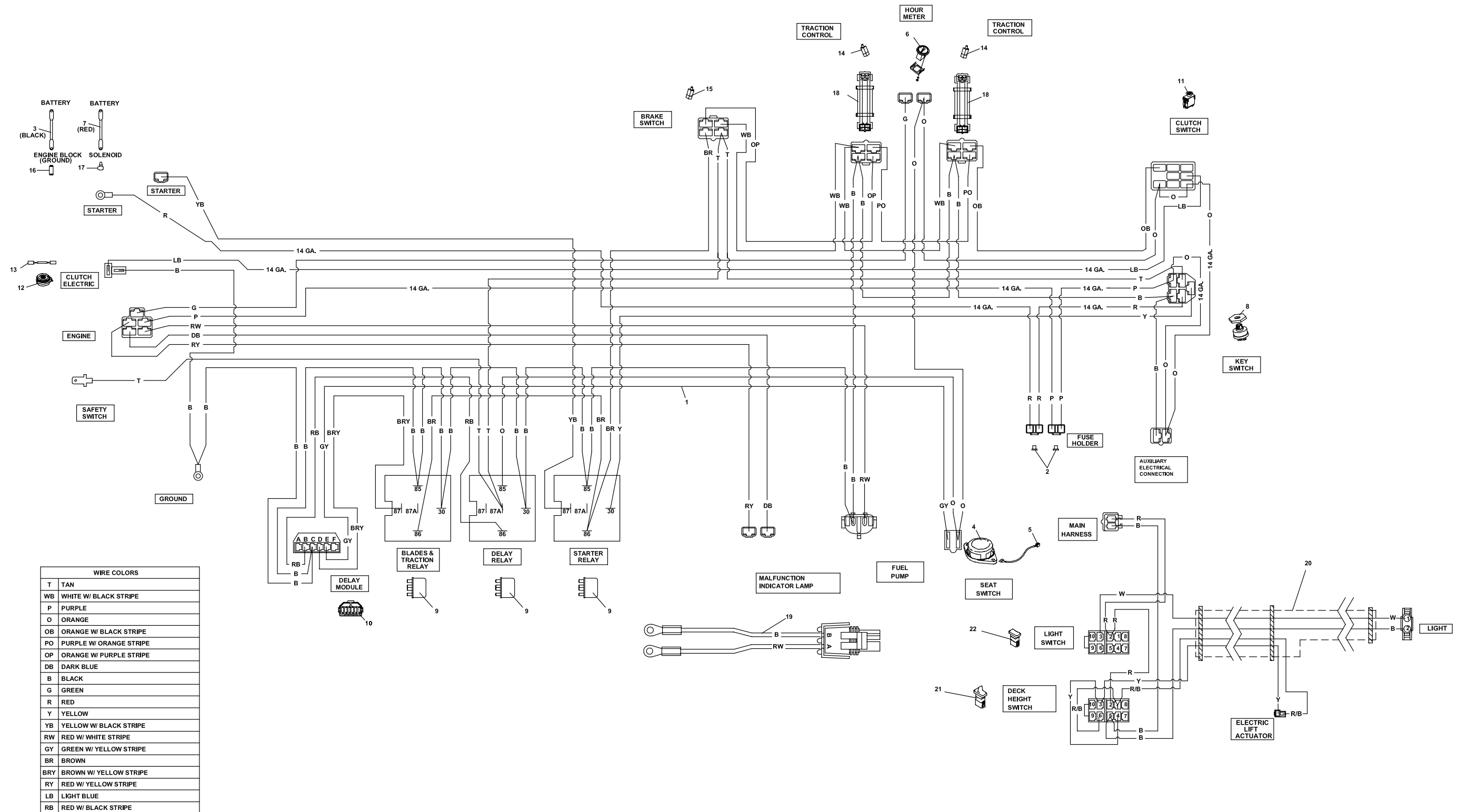
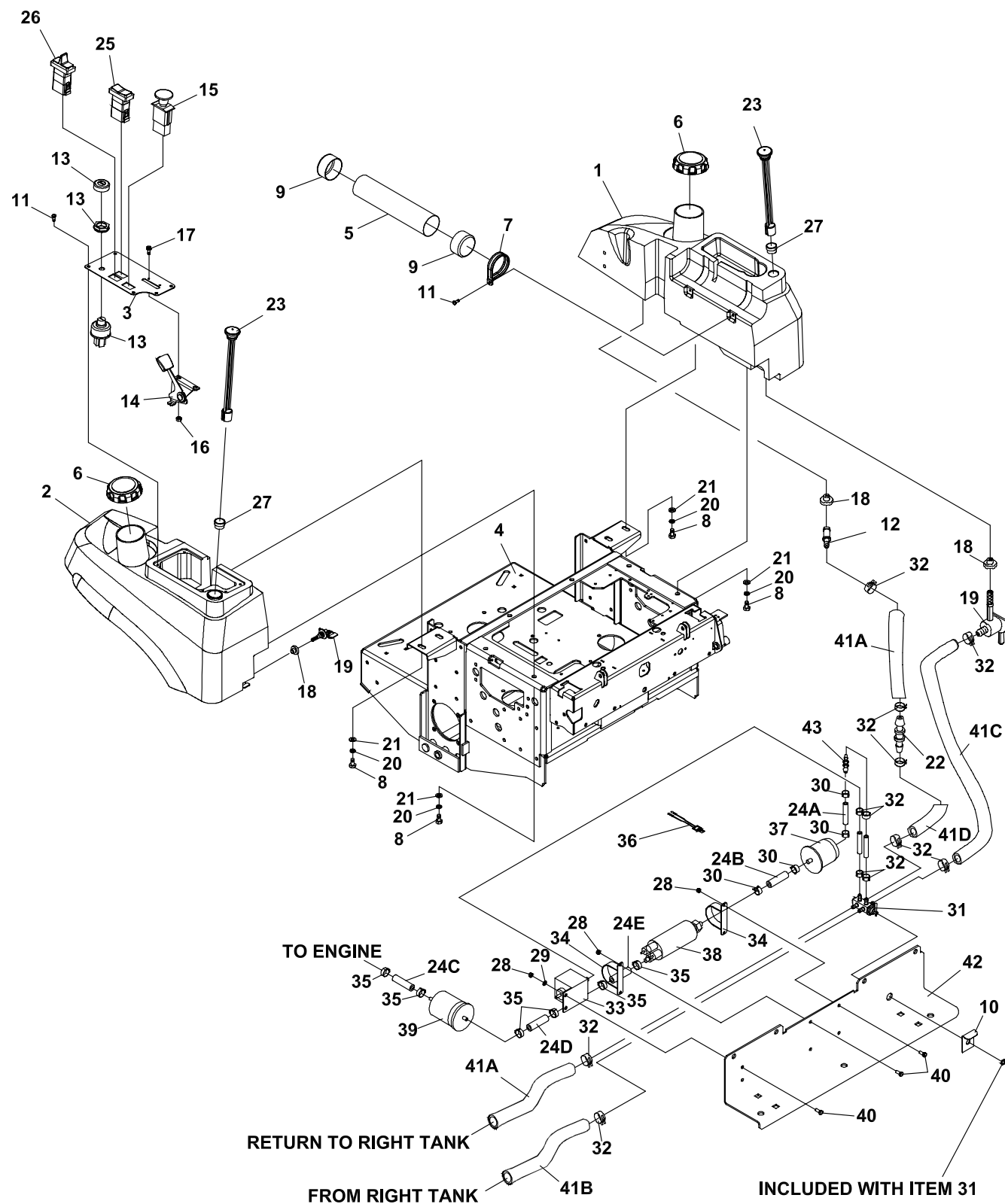




FIGURE 11





BZT 2000 EFI Series

FUEL TANKS/CONTROL PANEL

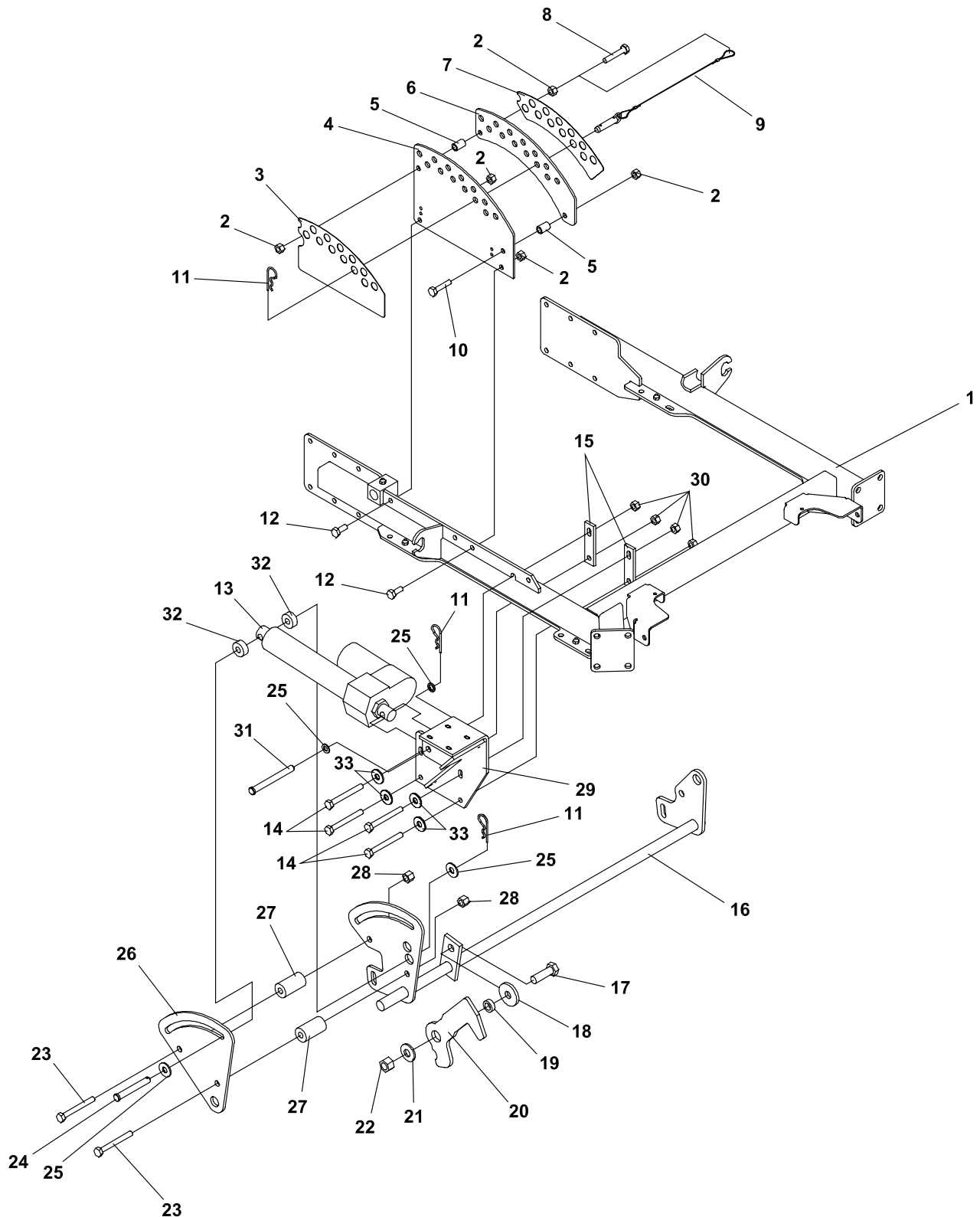
2722185-11

FIGURE 11

ITEM	PART NO.	DESCRIPTION	QTY	ITEM	PART NO.	DESCRIPTION	QTY
11-1	2722167	TANK-FUEL LH (INCLUDES ITEMS 12,18,19,23 & 27)	1	11-35	2722126	CLAMP-FUEL HOSE CRIMP	6
11-2	2722168	TANK-FUEL RH (INCLUDES ITEMS 12,18,19,23 & 27)	1	11-36	2722078	HARNESS-FUEL PUMP	1
11-3	2721808	S CONTROL PANEL W/LAB	1	11-37	2722117	FILTER-FUEL	1
11-4	2720997	S ENG DECK W/LABS	1	11-38		FUEL PUMP (AVAILABLE THRU KOHLER)	1
11-5	2306144	S-DOC TUBE W/LABS	1	11-39	970250	KIT-EFI FUEL FILTER (INCLUDES QTY 2 OF ITEM 35)	1
11-6	2721520	CAP-FUEL TANK	2	11-40	64206-13	BLT-MET M5X.8X12 (48016-17 IS A SERVICEABLE LENGTH OF 68")	6
11-7	38542	CLAMP-DOC TUBE	2	11-41A	48016-17	HOSE-1/4IDX1/2ODX36"	2
11-8	64205-007	BLT-MET M10-1.5X20	8	11-41B	48016-17	HOSE-1/4IDX1/2ODX28"	1
11-9	38061A	SPINDLE-SHIELD	2	11-41C	48016-17	HOSE-1/4IDX1/2ODX22"	1
11-10	4115065.7	BRACKET-FUEL VALVE	1	11-41D	48016-17	HOSE-1/4IDX1/2ODX13"	1
11-11	64263-001	BLT-FLG HD M6-1.0 X 12	7	11-42	2722071.7	PLATE-KICK	1
11-12	2722090	FTG-FUEL 1/4 STRAIGHT	2	11-43	4113602	REDUCER-5/16 TO 1/4	1
11-13	128010	KEY-SWITCH	1				
	128010-01	S-KEY SWITCH NYL NUT	1				
	128010-02	S-KEY SWITCH NYL BEZEL	1				
11-14	118020-09	CONTROL, THROTTLE	1				
11-15	2188153	SWITCH-CLUTCH	1				
11-16	64025-15	NUT-HEX #10-24 KEPS	2				
11-17	64152-46	SCR.-SLT HH #10-24X1/2	2				
11-18	48310	S BUSHING, FUEL TANK	4				
11-19	38540	S FUEL SHUTOFF VALVE	2				
11-20	800488	LOCKWASHER M10	8				
11-21	64251-004	WASHER-M10	8				
11-22	4113704	COUPLER-1/4" NYL HSE	1				
11-23	2721945	GAUGE-REMOTE FUEL	2				
		(2722127-01 IS A SERVICEABLE LENGTH OF 60")					
11-24A	2722127-01	HOSE-5/16 FUEL EFI 5.5"	1				
11-24B	2722127-01	HOSE-5/16 FUEL EFI 3.25"	1				
11-24C	2722127-01	HOSE-5/16 FUEL EFI 11"	1				
11-24D	2722127-01	HOSE-5/16 FUEL EFI 34"	1				
11-24E	2722127-01	HOSE-5/16 FUEL EFI 5.5"	1				
11-25	2721815	SWITCH-LIGHT ON/OFF	1				
11-26	2721814	SWITCH-DECK HEIGHT	1				
11-27	2218147	GROMMET-GAUGE	2				
11-28	64237-01	LOCKNUT-NYLON M5 X .8	6				
11-29	64251-001	WASHER-M5	2				
11-30	88042-02	CLAMP	4				
11-31	2721911	VALVE-DUEL SECT FUEL	1				
11-32	88042N	HOSE CLAMP	14				
11-33		REGULATOR (AVAILABLE THRU KOHLER)	1				
11-34		CLAMP (AVAILABLE THRU KOHLER)	2				



FIGURE 12





BZT 2000 EFI Series

ELECTRIC DECK LIFT-72"

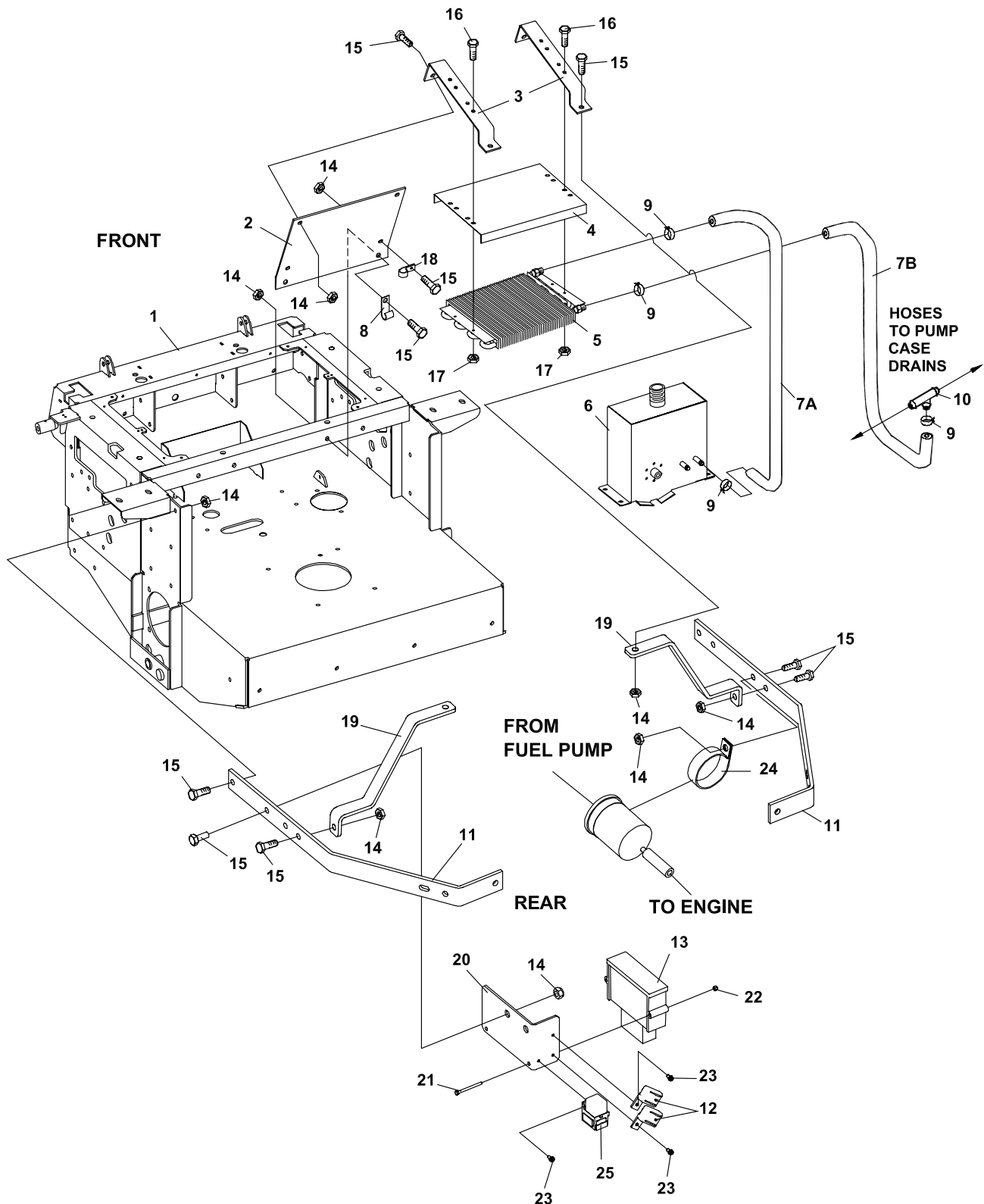
2722185-12

FIGURE 12

ITEM	PART NO.	DESCRIPTION	QTY	ITEM	PART NO.	DESCRIPTION	QTY
12-1	2722723.5	WLDMT-CRADLE	1				
12-2	64237-03	LOCKNUT-NYLN M10-1.5	5				
12-3	2000791	LBL-OUTSIDE HOC	1				
12-4	2182523.7	PLATE-HEIGHT ADJ OUTER	1				
12-5	2183071-03	SPACER	2				
12-6	2182524.7	PLATE-HEIGHT ADJ INNER	1				
12-7	2000790	LABEL-INNER HOC	1				
12-8	64205-008	BLT-MET M10-1.50X55	1				
12-9	2188141	ASSY, PIN & LANYARD	1				
12-10	64205-034	BLT-MET M10-1.50X45	1				
12-11	64168-1	PIN-COTTER .120X2-3/8	3				
12-12	A1104057	BLT-MET M10-1.5X25	2				
12-13	2720642	ACTUATOR-LINEAR 12VDC	1				
12-14	64205-009	BLT-MET M10-1.5X65	4				
12-15	2721644.7	PLATE-BOLT	2				
12-16	2722614.5	WLDMT-ELECTRIC LIFT	1				
12-17	64205-055	BLT-MET M16-2.0 X 50	1				
12-18	64163-78	WASHER-.635 X 2.00	1				
12-19	2183084	SPACER-16.25X50.8X8.5LG	1				
12-20	2182522.7	LEVER-DECKLIFT	1				
12-21	64209-03	SPRING WASHER .67 ID	1				
12-22	64237-04	LOCKNUT-NYLON M16-2.0	1				
12-23	64263-022	BLT-FLG HD M12-1.75 X 90	2				
12-24	64188-40	PIN, CLEVIS 1/2 X 3-1/2	1				
12-25	64163-19	WASHER-33/64X1-1/4X12GA	4				
12-26	4112962.5	PLATE-DECKLIFT ELECT	1				
12-27	2183077	SPACER-DECKLIFT	2				
12-28	64265-06	NUT-FL NYL LOCK M12-1.75	2				
12-29	2721645.7	WLDMT-EL LIFT MTG BRKT	1				
12-30	64265-05	NUT-FL NYL LOCK M10-1.5	4				
12-31	64188-43	PIN-CLEVIS	1				
12-32	2188227	SPACER 1.25 X 0.50 X 0.52	2				
12-33	64251-004	WHSR-M10	4				



FIGURE 13





BZT 2000 EFI Series

OIL COOLER/ECU

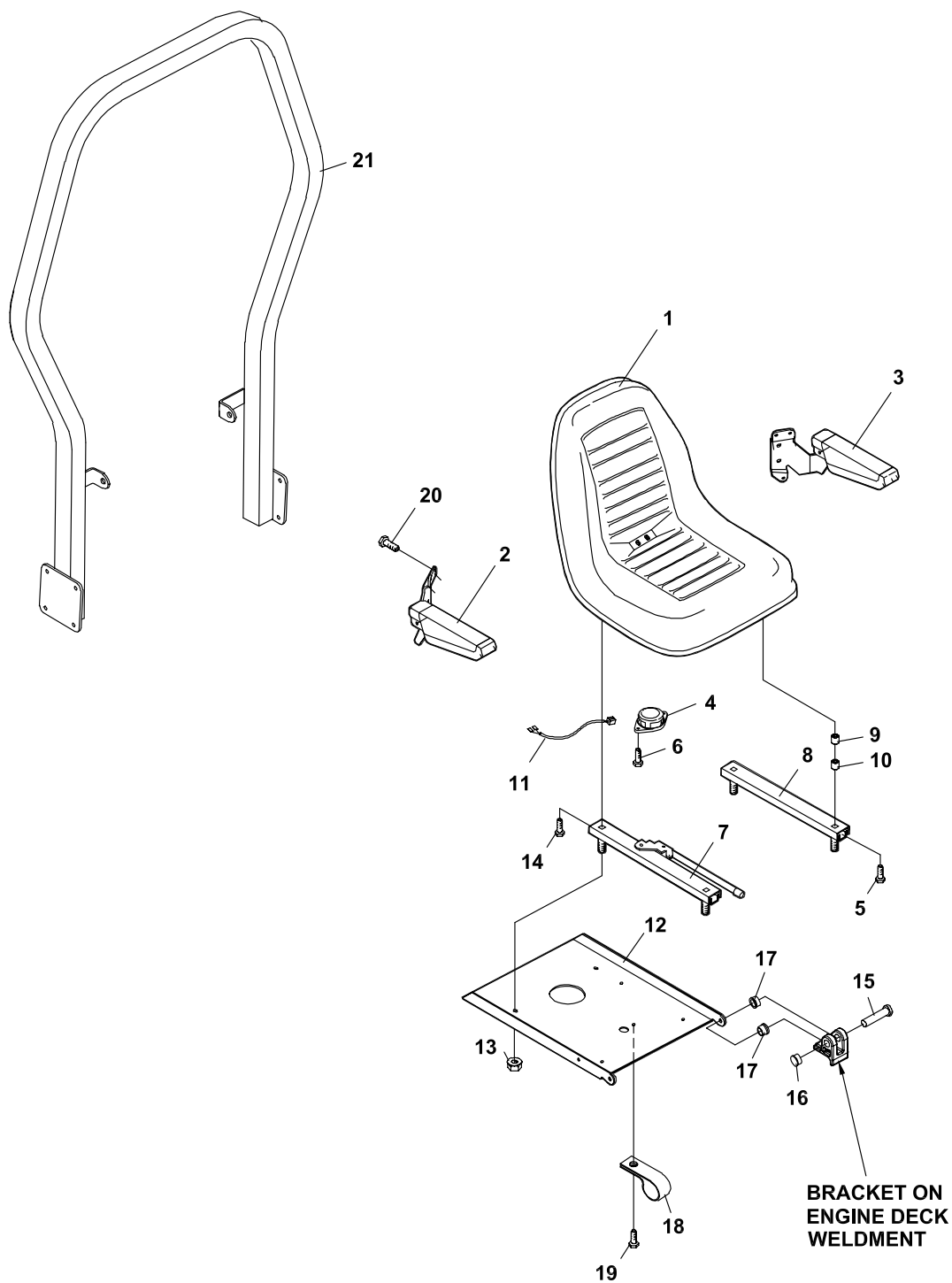
2722185-13

FIGURE 13

ITEM	PART NO.	DESCRIPTION	QTY	ITEM	PART NO.	DESCRIPTION	QTY
13-1	2720997	S ENGINE DECK W/LABS	1				
13-2	2722339.7	BRKT-FRONT COOLER	1				
13-3	2722338.7	BRKT-OIL COOLER	2				
13-4	2720891.7	SCREEN-OIL COOLER	1				
13-5	2188173	COOLER-OIL	1				
13-6	2186211	S HYD RSRVR W/LABS	1				
(69053-05 IS A SERVICEABLE LENGTH OF 55")							
13-7A	69053-05	3/8 HIGH TEMP HOSE 26"	1				
13-7B	69053-05	3/8 HIGH TEMP HOSE 22"	1				
13-8	48412-01	CLIP-CABLE 3/4 J X 10.32	2				
13-9	88042-04	CLAMP-HOSE 5/8	4				
13-10	58026-01	3 WAY CONNECTOR 3/8	1				
13-11	2722296.7	ARM-BUMPER	2				
(ITEMS 12 & 13 INCLUDED WITH ENGINE)							
13-12		FUSES	2				
13-13		ECU	1				
13-14	64265-05	NUT-FL NYL LOCK M10-1.5	13				
13-15	64263-013	BLT-FLG HD M10-1.5 X 30	13				
13-16	64263-002	BLT-FLG HD M6-1.0 X 16	4				
13-17	64237-02	LOCKNUT-NYLON M6-1.00	4				
13-18	48228-2A	CABLE-CLIP 3/4 W/INSTN	1				
13-19	2721928.7	BRKT-COOLER	1				
13-20	2722081.7	BRKT-ECU	1				
13-21	64205-059	BLT-MET M4-0.7X50	2				
13-22	64237-08	LOCKNUT-NYLON M4-0.7	2				
13-23	64197-015	BLT-TDFM 10-32X1/2	3				
13-24	2722337	CLAMP-FUEL FILTER EFI	1				
13-25	128037	RELAY	1				



FIGURE 14





BZT 2000 EFI Series

SEAT ASSEMBLY & ROPS

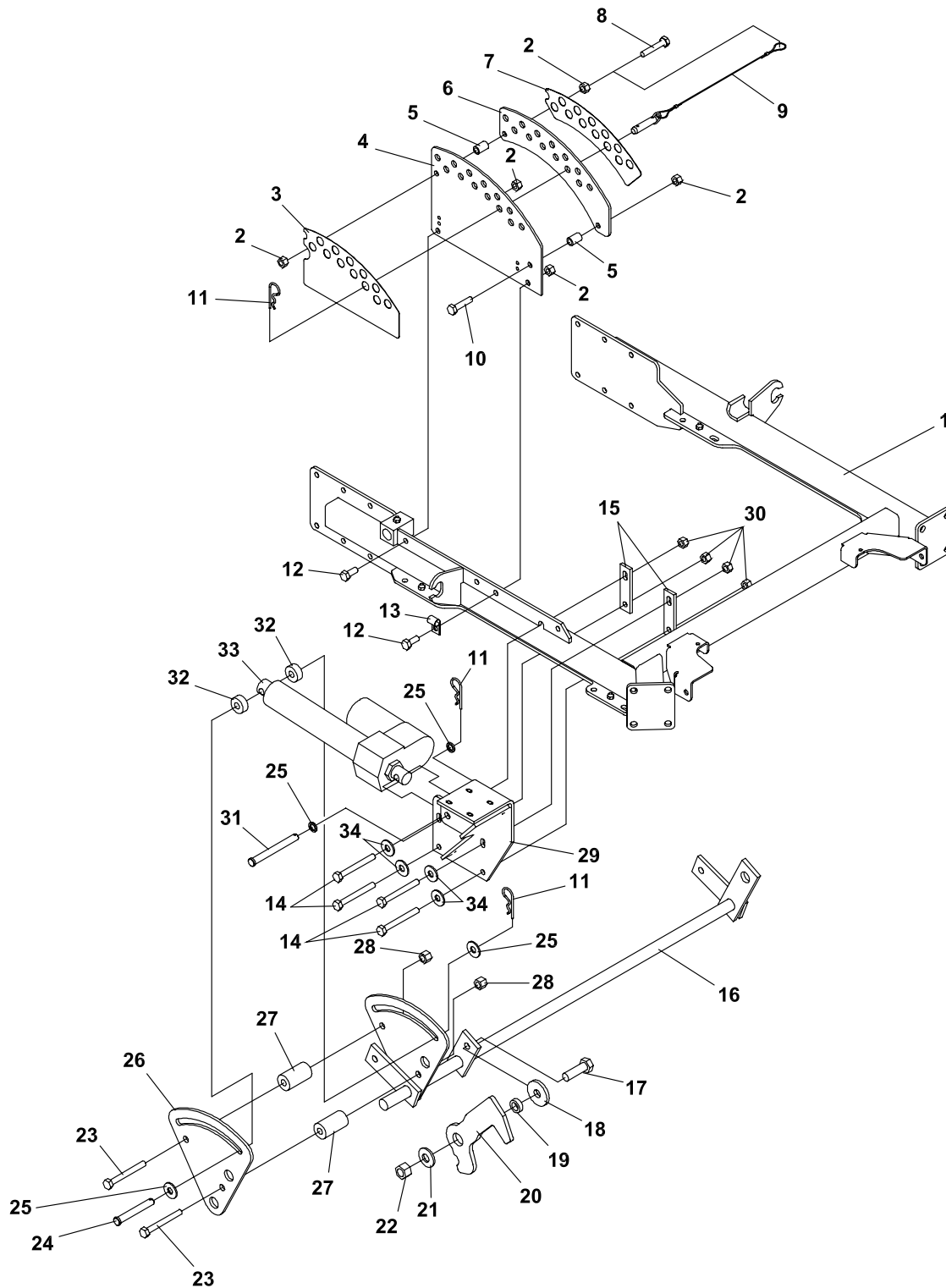
2187026

FIGURE 14

ITEM	PART NO.	DESCRIPTION	QTY	ITEM	PART NO.	DESCRIPTION	QTY
14-1	2720975	SEAT-SUSPENSION (INCLUDES ITEMS 2-10)	1				
	2720975-01	SEAT CUSHION	1				
	2720975-02	BACK CUSHION	1				
	2720975-05	CABLE ASSEMBLY (INTERNAL SEAT COMPONENT NOT ILLUSTRATED)	2				
	2720975-08	ASSY-SEAT BACK PANEL	1				
14-2	2721093	RH ARM REST	1				
14-3	2721094	LH ARM REST	1				
14-4	158135-01	SWITCH, SEAT NO	1				
14-5	64123-69	BLT-HEX 5/16-18X1-1/2	2				
14-6	64123-49	BLT-HEX 1/4-20X1/2	2				
14-7	2720975-04	SLIDE RAIL-ADJ	1				
14-8	2720975-03	SLIDE RAIL-SLAVE	1				
14-9	2720975-06	SPACER-NYLON 5/8"	2				
14-10	2720975-07	SPACER-NYLON 3/8"	4				
14-11	158136	WIRE-SEAT SWITCH	1				
14-12	2722427.7	PLATE-SEAT	1				
14-13	64141-6	NUT-WLF 5/16-18	4				
14-14	2198096	SCREW-CAP WSHR HD	4				
14-15	64188-39	PIN-CLEVIS3/8X1-3/8W/OHL	2				
14-16	64175-04	PUSHNUT 3/8 DIA	2				
14-17	38371-01	BRG-NYLINER 3/8	2				
14-18	48228A	CABLE CLIP-INSULATED	1				
14-19	64152-23	SCREW 1/4-20X3/8	1				
14-20	64139-16	BLT-WLF 5/16-18 X 3/4	6				
OPTIONAL ROPS:							
14-21	970162	ATT-ROPS					



FIGURE 15





BZT 2000 EFI Series

ELECTRIC DECK LIFT-61"

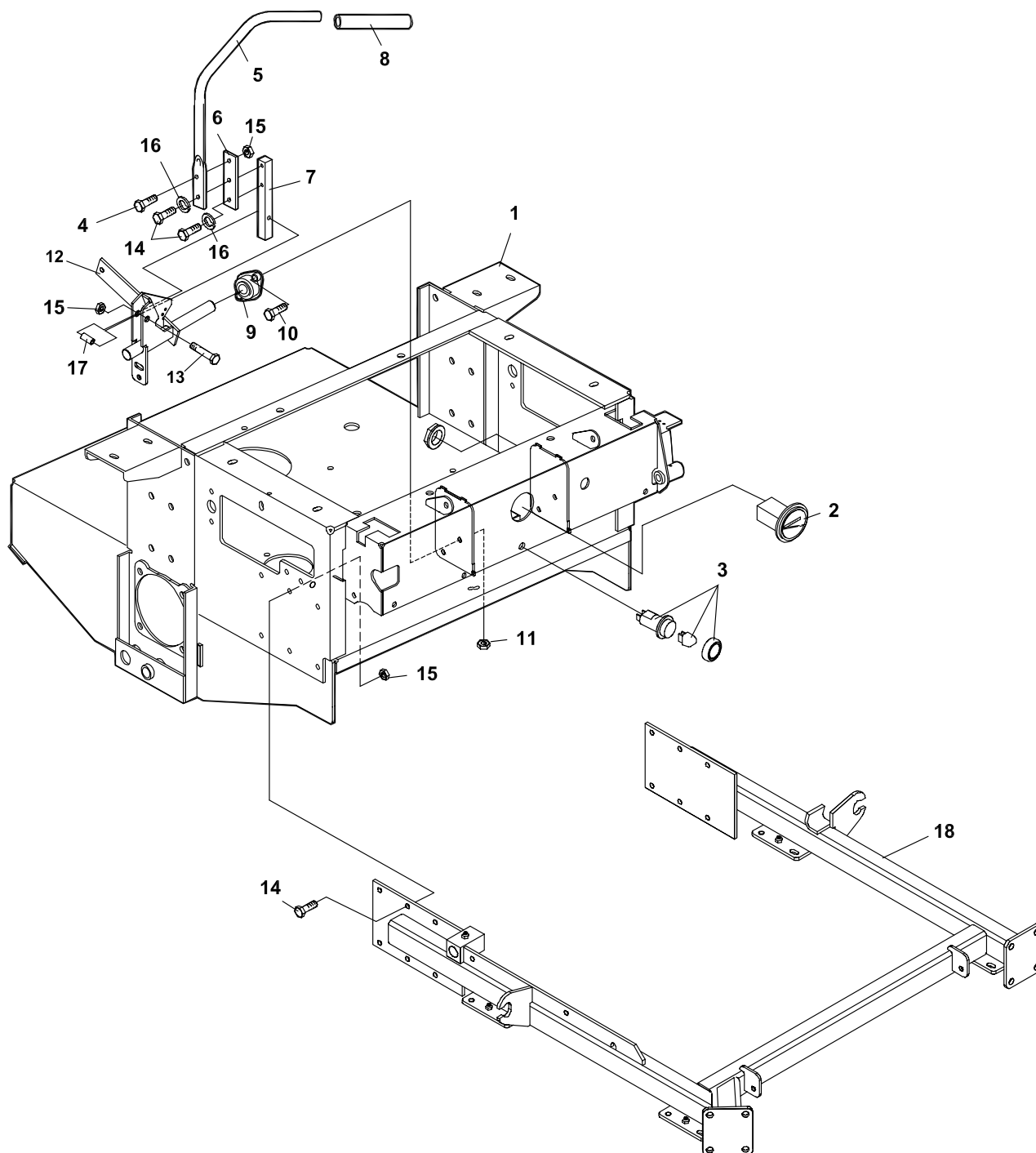
2722089-16

FIGURE 15

ITEM	PART NO.	DESCRIPTION	QTY	ITEM	PART NO.	DESCRIPTION	QTY
15-1	2721968.5	WLDMT-CRADLE	1				
15-2	64237-03	LOCKNUT-NYLN M10-1.5	5				
15-3	2000791	LBL-OUTSIDE HOC	1				
15-4	2182523.7	PLATE-HEIGHT ADJ OUTER	1				
15-5	2183071-03	SPACER	2				
15-6	2182524.7	PLATE-HEIGHT ADJ INNER	1				
15-7	2000790	LABEL-INNER HOC	1				
15-8	64205-008	BLT-MET M10-1.50X55	1				
15-9	2188141	ASSY, PIN & LANYARD	1				
15-10	64205-034	BLT-MET M10-1.50X45	1				
15-11	64168-1	PIN-COTTER .120X2-3/8	3				
15-12	A1104057	BLT-MET M10-1.5X25	2				
15-13	48228-08	CABLE-CLIP INSULATED	1				
15-14	64205-009	BLT-MET M10-1.5X65	4				
15-15	2721644.7	PLATE-BOLT	2				
15-16	2186192.5	WLDMT-ELECTRIC LIFT	1				
15-17	64205-055	BLT-MET M16-2.0 X 50	1				
15-18	64163-78	WASHER-.635 X 2.00	1				
15-19	2183084	SPACER-16.25X50.8X8.5LG	1				
15-20	2182522.7	LEVER-DECKLIFT	1				
15-21	64209-03	SPRING WASHER .67 ID	1				
15-22	64237-04	LOCKNUT-NYLON M16-2.0	1				
15-23	64263-022	BLT-FLG HD M12-1.75 X 90	2				
15-24	64188-40	PIN, CLEVIS 1/2 X 3-1/2	1				
15-25	64163-19	WASHER-33/64X1-1/4X12GA	4				
15-26	2182547.5	ARM-DECKLIFT ELECTRIC	1				
15-27	2183077	SPACER-DECKLIFT	2				
15-28	64265-06	NUT-FL NYL LOCK M12-1.75	2				
15-29	2721645.7	WLDMT-EL LIFT MTG BRKT	1				
15-30	64265-05	NUT-FL NYL LOCK M10-1.5	4				
15-31	64188-43	PIN-CLEVIS	1				
15-32	2188227	SPACER 1.25 X 0.50 X 0.52	2				
15-33	2720642	ACTUATOR-LINEAR 12VDC	1				
15-34	64251-004	WHSR-M10	4				



FIGURE 16





BZT 2000 EFI Series

STEERING/INSTRUMENTS

2722185-16

FIGURE 16

ITEM	PART NO.	DESCRIPTION	QTY	ITEM	PART NO.	DESCRIPTION	QTY
16-1	2720997	S ENGINE DECK W/LABS	1				
16-2	48030N	HOUR METER ASSY	1				
16-3	2722121	LAMP-ENG MALFNCTN IND	1				
	2722121-01	BULB	1				
16-4	A1104057	BOLT-M10-1.50X25	2				
16-5	2182344.7	LEVER-CONTROL	2				
16-6	2182434.7	BRKT-TRACTION LEVER	2				
16-7	2183074	BRACKET-HANDLE	2				
16-8	2188144	GRIP-.75 IDX12	2				
16-9	2188145	BEARING-SELF ALIGNED	4				
16-10	64123-15	BLT-HEX 3/8-16X3/4	8				
16-11	64141-4	NUT-WLF 3/8-16	8				
16-12	4112105.7	WLDMT-TRCTN CTRL RH	1				
	* 4112104.7	WLDMT-TRCTN CTRL LH	1				
16-13	64205-011	BLT-MET M10-1.5X40	2				
16-14	A110406	BLT-MET M10-1.5X30	16				
16-15	64237-03	LOCKNUT-NYLON M10-1.5	16				
16-16	800488	LOCKWASHER-M10	4				
16-17	2183073	SPACER	2				
16-18	2721968.5	WLDMT-CRADLE (61" DECKS ONLY)	1				
	2722723.5	WLDMT-CRADLE (72" DECKS ONLY)	1				

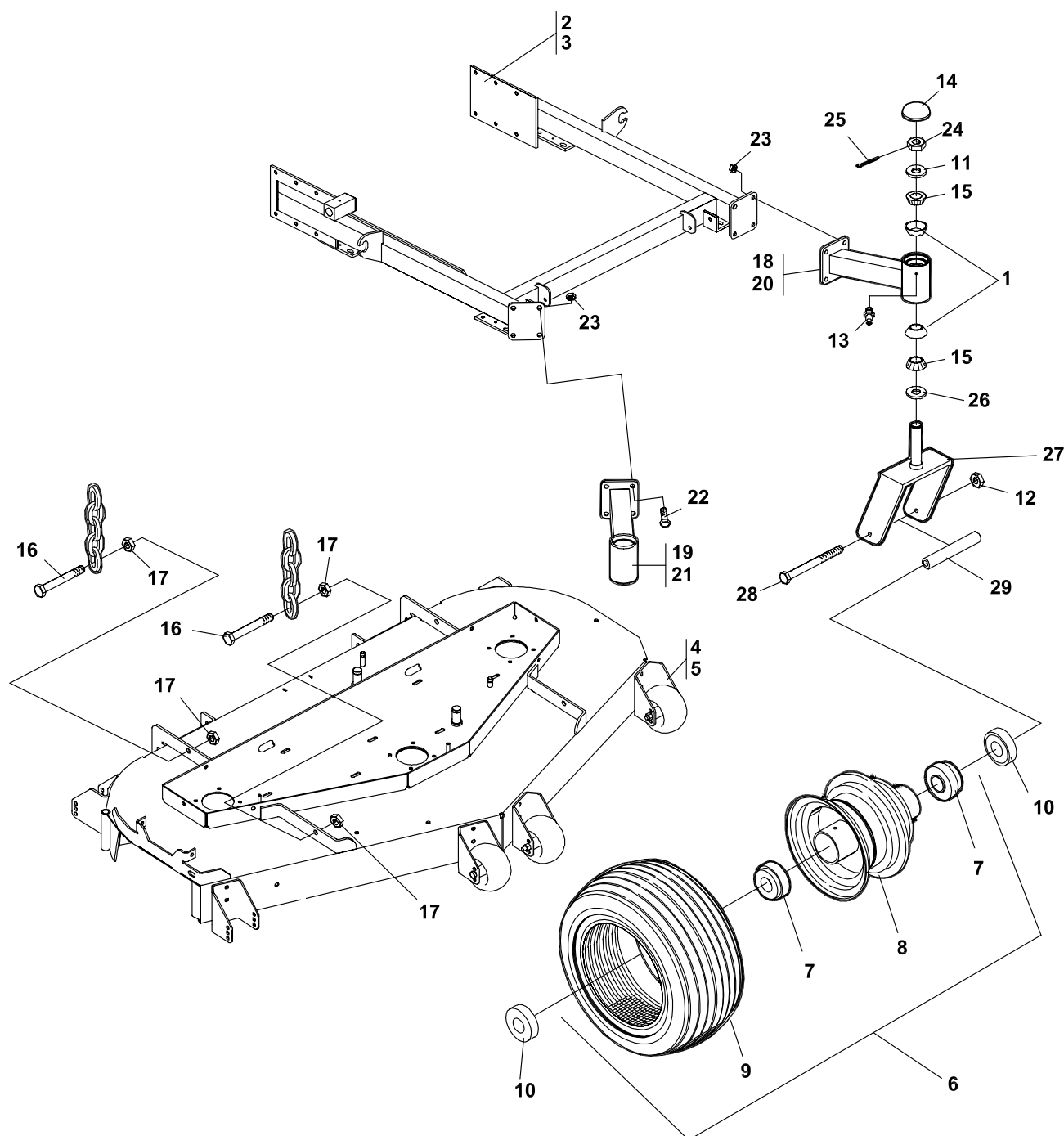
* NOT ILLUSTRATED

CRADLE & CASTER ASSEMBLY

BZT 2000
EFI Series



FIGURE 17





BZT 2000 EFI Series

CRADLE & CASTER ASSEMBLY

2722185-17

FIGURE 17

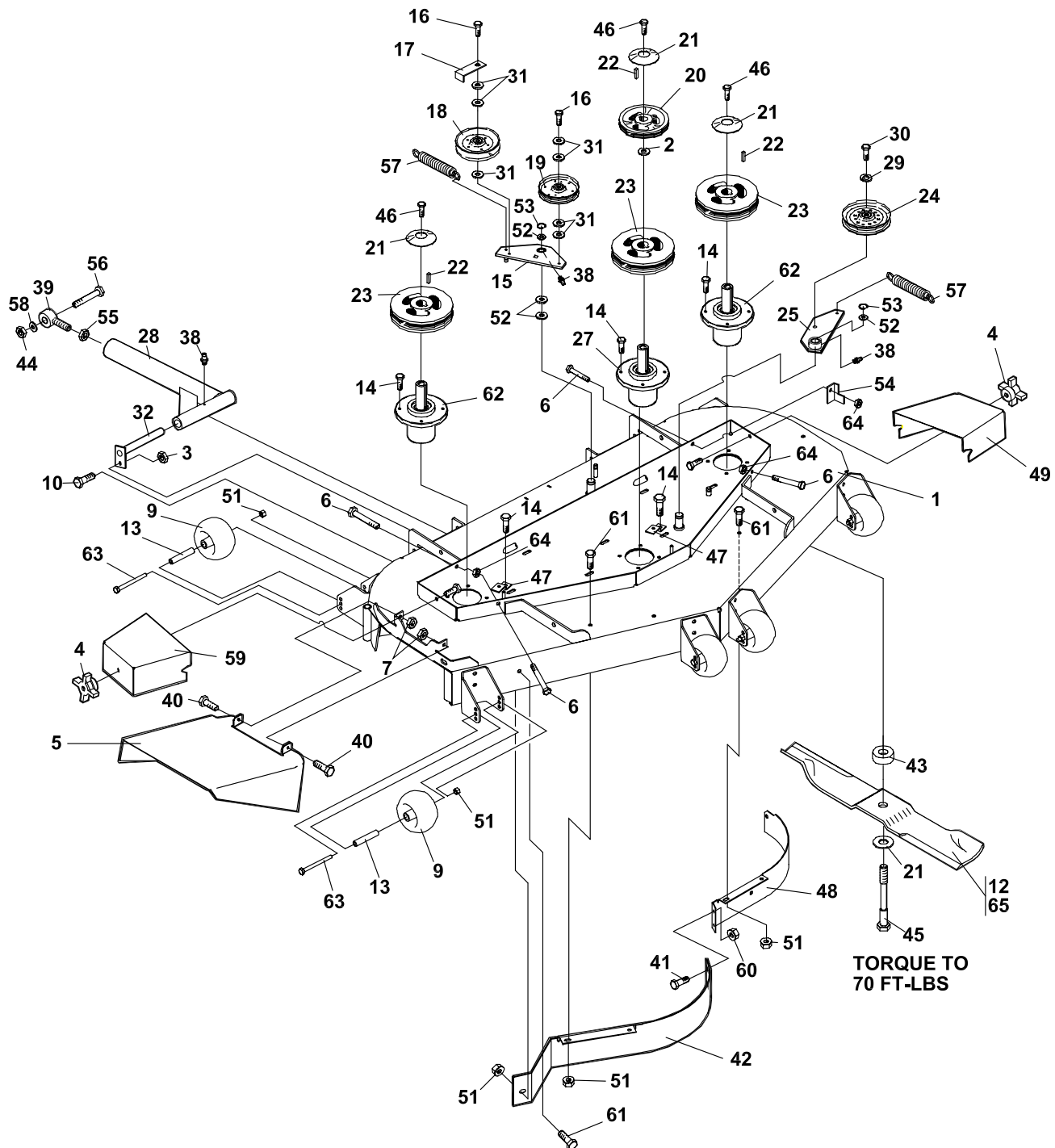
ITEM	PART NO.	DESCRIPTION	QTY	ITEM	PART NO.	DESCRIPTION	QTY
17-1	48043-03C	S CUP, OUTER BEARING	4				
17-2	2721968.5	WLDMT-CRADLE (USED ON 61" ONLY)	1				
17-3	2722723.5	WLDMT-CRADLE (USED ON 72" ONLY)	1				
17-4	2721710.5	S-61 DECK W/LABS	1				
17-5	2720089.5	WLDMT-CUTTERDECK 72	1				
17-6	2722228	WHEEL-13X5.00-6 ASSY (INCLUDES ITEMS 7-9)	2				
17-7	2722228-03	BEARING	2				
17-8	2722228-01	RIM-13" ASSY W/VLV STEM	1				
17-9	2720475-01	TIRE-13X5.00-6 SMOOTH	1				
17-10	2722231	SPACER-END	4				
17-11	64163-26	WASHER, .766 ID X 1.625	2				
17-12	64229-07	LOCKNUT-NYLON 3/4-10	2				
17-13	85010N	ZERK, 1/4-28 STR SLF THD	9				
17-14	2188135	DUST COVER	2				
17-15	48043-04C	S-CONE, OUTER BEARING	4				
17-16	64205-029	BLT-MET M12X1.75X40	8				
17-17	64246-04	NUT-WHIZ M12-1.75	16				
17-18	2722431.5	WLDMT-CASTER LH 72 SD	1				
17-19	2722432.5	WLDMT-CASTER RH 72 SD (USE FOR 72" DECKS ONLY)	1				
17-20	4113901.5	WLDMT-CSTR ARM 61 LH	1				
17-21	4113902.5	WLDMT-CSTR ARM 61 RH (USE FOR 61" SD DECKS ONLY)	1				
17-22	A1105061	BOLT-M12-1.75X30	8				
17-23	64237-06	LOCKNUT-NYLON M12-1.75	8				
17-24	64025-20	NUT HEX 3/4-16 - SLOT U	2				
17-25	64140-5	COTTER PIN - 1/8 X 1-1/2	2				
17-26	48480	SEAL	2				
17-27	2722452.5	WLDMT-CASTER YOKE	2				
17-28	64123-223	BLT-3/4-10X10	2				
17-29	2722230-03	SPANNER	2				

61" SIDE DISCHARGE

BZT 2000
EFI Series



FIGURE 18





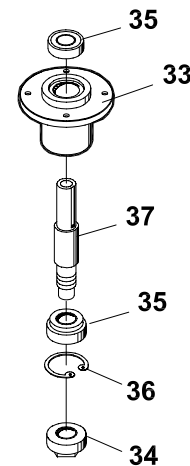
BZT 2000 EFI Series

2722185-18

61" SIDE DISCHARGE

FIGURE 18

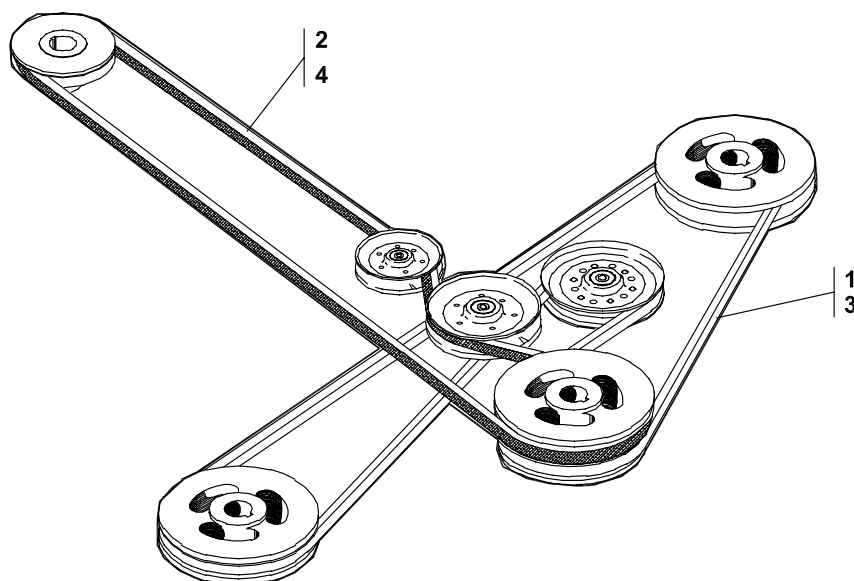
ITEM	PART NO.	DESCRIPTION	QTY	ITEM	PART NO.	DESCRIPTION	QTY
18-1	2721710.5	WLDMT-CUTTERDECK 61	1	18-45	64123-209	BLT-HEX 5/8-18X3.5	3
18-2	64163-64	WSHR 1.015X1.500X14GA	1	18-46	64123-208	BLT-HEX 5/8-11X1 1/2	3
18-3	64237-05	LOCKNUT-NYLON M8-1.25	2	18-47	32767.7	SUPPORT-BELT	2
18-4	38524	KNOB-4 PRONG 3/8-16	2	18-48	2182493.7	BAFFLE-FRONT LH	1
18-5	2302092.5	CHUTE-MID 61	1	18-49	2182351.5	BELT COVER LH	1
18-6	64166-17	BLT-SHLDR 3/8-16X1.12	4	18-50	A1104057	BLT-MET M10-1.5X25	8
18-7	64229-03	LOCKNUT NYLON 3/8-16	2	18-51	64237-03	LOCKNUT-NYLON M10	15
18-8	46335	SHAFT-ASM-ROLLER	4	18-52	64163-65	WSHR .890X1.375X18 GA	4
18-9	2721512	ROLLER-5X2.75	7	18-53	64221-04	E-CLIP .875	2
18-10	64205-001	BLT-MET M8-1.25X20	2	18-54	2182437.7	GUIDE-BELT	1
18-11	146067	ROLLER SHAFT	2	18-55	64001-1	NUT-JAM 5/8-18	2
18-12	112111-03	BLADE 21.0 OFFST	3	18-56	64123-206	BLT-HEX 5/8-11X4.5	2
18-13	2720685	SPACER-ROLLER	7	18-57	2188131	SPRING-EXTENSION	2
18-14	64197-003	BLT-TDFM 3/8-16X1	14	18-58	64163-73	WSHR-FLT .625IDX.062	A/R
18-15	2186140.7	WLDMT-PTO IDLER	1	18-59	2182352.5	BELT COVER RH	1
18-16	64197-004	BOLT TR 3/8-16X1 3/4	2	18-60	64229-01	LOCKNUT-NYL 1/4-20	2
18-17	2302125.7	GUIDE-BELT	1	18-61	64205-007	BLT MET M10-1.50X20	6
18-18	48393	PULLEY, V IDLER	1	18-62	2186205	ASSY-TOP MNT SPNDL	2
18-19	38297	IDLER, 5.0 OD FLNGD	1			(INCLUDES ITEMS 33-37)	
18-20	2720213	PULLEY-7.0 B GRV 1.0	1	18-63	64205-004	BOLT-MET M10-1.5X110	7
18-21	64209-03	SPRING WSHR .67 ID	6	18-64	64141-4	NUT-WLF 3/8-16	4
18-22	64164-12	1/4X1/4X1 SQ END KEY	4	18-65	2722543-03	BLADE-21.00 ELIMINATOR	3
18-23	31012A	ENGINE PULLEY	3			(OPTIONAL)	
18-24	128169	PULLEY, IDLER 5.50"	1				
18-25	2186138.7	WLDMT-DECK IDLER	1				
18-26	64246-02	WIZ-NUT M8-1.25	6				
18-27	2186207	ASSY-TOP MNT SPNDL	1				
		(INCLUDES ITEMS 33-37)					
18-28	2186185.7	WLDMT-PUSHBAR	2				
18-29	64006-05	LCKWSHR HELICAL 1/2	1				
18-30	64123-05	BLT-HEX 1/2-20X1 1/2	1				
18-31	64163-46	WSHR .383/.393 X 7 GA	6				
18-32	2186125	WLDMT-LOCK PSHBR	2				
18-33	2191000.7	SPINDLE HOUSING	3				
18-34	38315	NUT-SPINDLE	3				
18-35	38348-01	BEARING-SPINDLE	6				
18-36	64144-38	SNAP-RING	3				
18-37	2183070-01	SPINDLE	1				
		(USED IN ASSY 2186207)					
	2183070-02	SPINDLE	2				
		(USED IN ASSY 2186205)					
18-38	85010N	STRAIGHT ZERK FTTG	6				
18-39	2188142-01	ROD, END 5/8	2				
18-40	64123-50	BLT-HEX 3/8-16X1	2				
18-41	64018-2	BLT-CRG 1/4-20X3/4	2				
18-42	2182494.7	BAFFLE-FRONT RH	1				
18-43	2188162	SPACER-BLADE	3				
18-44	64229-06	LOCKNUT-NYLON 5/8-11	2				



2186207-ASSY TOP MOUNT SPINDLE
2186205-ASSY TOP MOUNT SPINDLE
(INCLUDES ITEMS 33-37)



FIGURE 19





BZT 2000 EFI Series

BELTS

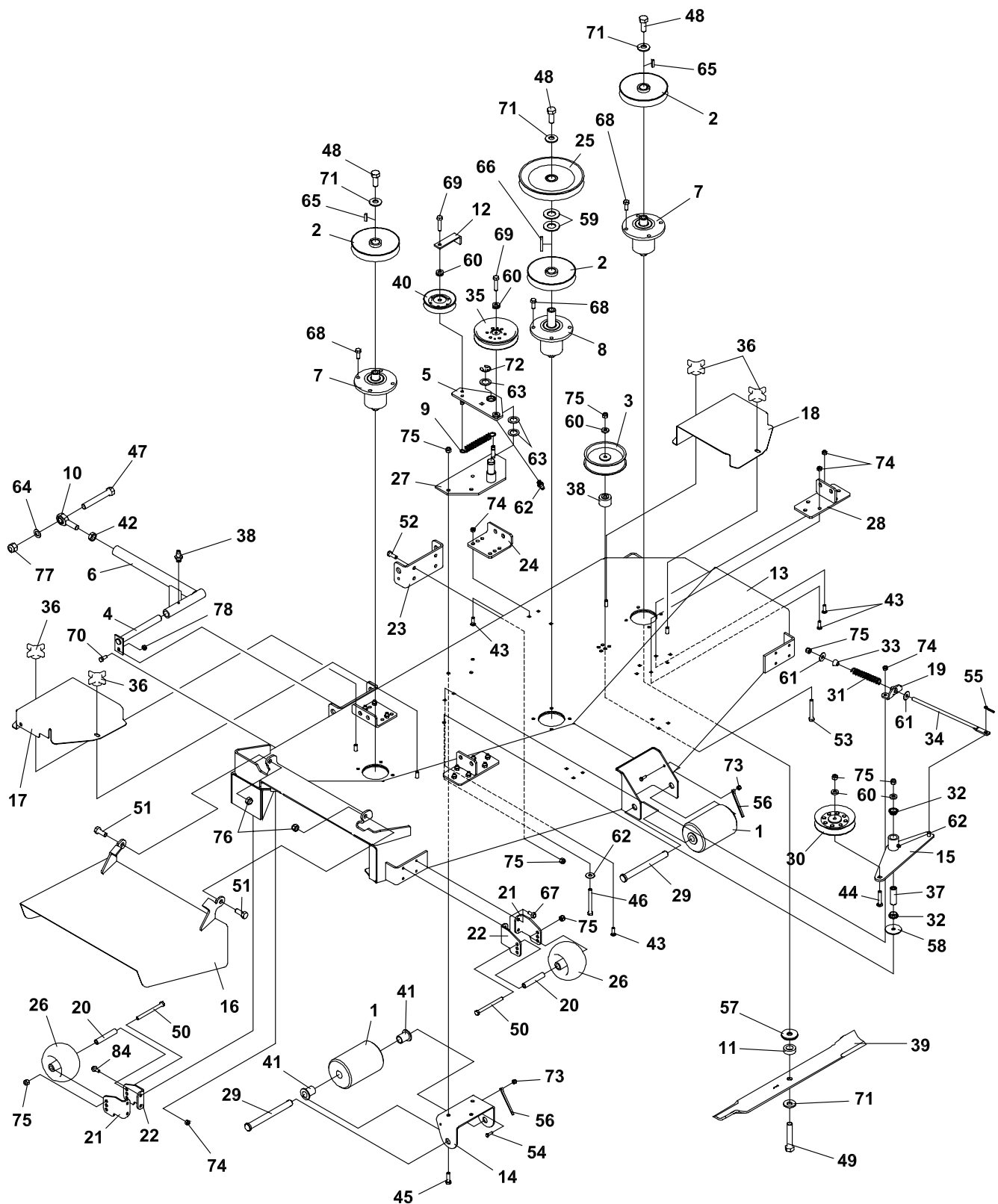
2722185-19

FIGURE 19

ITEM	PART NO.	DESCRIPTION	QTY	ITEM	PART NO.	DESCRIPTION	QTY
19-1	128003	BELT-CUTTERDECK	1				
19-2	2722224	BELT-PTO (USE ON 61" DECKS ONLY)	2				
19-3	3970215	BELT-BLADE TO BLADE	1				
19-4	2722554	BELT-PTO (USE ON 72" SD DECKS ONLY)	1				



FIGURE 20





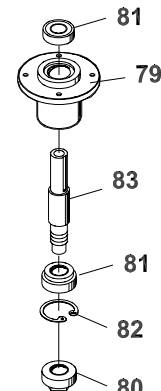
BZT 2000 EFI Series

2722185-20

72" SIDE DISCHARGE

FIGURE 20

ITEM	PART NO.	DESCRIPTION	QTY	ITEM	PART NO.	DESCRIPTION	QTY
20-1	163425	ROLLER	2	20-51	64123-39	BLT-HEX 1/2-13X1-1/4	2
20-2	198027	PULLEY-6.00 DIA	3	20-52	64123-50	BOLT, 3/8-16X1 HEX	8
20-3	1985108	PULLEY- IDLER STATIONRY	1	20-53	64123-88	BOLT, 3/8-16X2-3/4 HEX	1
20-4	2186125	WLDMT-LOCK, PUSHBAR	1	20-54	64123-89	BOLT-HEX 1/4-20X3/4	2
20-5	2186140.7	WLDMT-PTO IDLER	1	20-55	64140-1	COTTERPIN-1/8X1	1
20-6	2186185.7	WLDMT-PUSHBAR	1	20-56	64140-14	COTTERPIN-1/4X3-1/2	2
20-7	2186205	ASSY-TOP MNT SPINDLE (INCLUDES ITEMS 79-83)	2	20-57	64163-11	2X.625/.628X10 GA. WSH	6
20-8	2186207	ASSY-TOP MNT SPINDLE (INCLUDES ITEMS 79-83)	1	20-58	64163-17	25/64 X 2 X 11GA WASHR	1
20-9	2188131	SPRING-EXTENSION	1	20-59	64163-25	1-1/32X2X11GA WASHER	2
20-10	2188142-01	ROD END 5/8	1	20-60	64163-46	WSHR-.383/.393X.88X7GA	8
20-11	2188162	SPACER-BLADE	3	20-61	64163-47	WSHR-.391X1.110X16 GA	3
20-12	2302125.7	GUIDE-BELT	1	20-62	85010N	ZERK-1/4-28	6
20-13	2720089.5	WLDMT-CUTTERDECK 72	1	20-63	64163-65	WSHR-.890X1.375X18 GA	3
20-14	2720090.7	BRACKET-REAR ROLLER	1	20-64	64163-73	WSHR-.625IDX1.120DX.062	1
20-15	2720094.7	WLDMT-IDLER ARM	1	20-65	64164-12	1/4X1/4X1 SQ END KEY	2
20-16	2720095.5	WLDMT-DISCHRG CHUTE	1	20-66	64164-13	1/4X1/4X2 SQ KEY	1
20-17	2720096.5	GUARD-BELT RH	1	20-67	64197-001	BOLT	12
20-18	2720097.5	GUARD-BELT LH	1	20-68	64197-003	BLT-TDFM 3/8-16X1.00	12
20-19	2720099.7	BRACKET-SPRING ROD	1	20-69	64197-004	BLT-TDFM 3/8-16X1-3/4	2
20-20	2720685	SPACER-ROLLER	4	20-70	64205-001	BLT-MET M8-1.25X20	1
20-21	2720813.7	BRKT-ROLLER MTG RH	4	20-71	64209-03	SPRING WASHER.67 ID	6
20-22	2720814.7	BRKT-ROLLER MTG LH	4	20-72	64221-04	E-RING.875	1
20-23	2721220.7	BRKT-HANGER	2	20-73	64229-01	LOCKNUT-NYLON 1/4-20	2
20-24	2721221.7	BRKT-CHAIN, REAR	2	20-74	64229-02	LOCKNUT-NYLON 5/16-18	20
20-25	2721415	PULLEY-7.56	1	20-75	64229-03	LOCKNUT-NYLON 3/8-16	19
20-26	2721512	ROLLER-5X2.75 CENTERED	4	20-76	64229-05	LOCKNUT, 1/2-13 NYLON	2
20-27	2722495.7	WLDMT-IDLER MOUNT	1	20-77	64229-06	LOCKNUT, NYLON 5/8-11	1
20-28	2722563.7	WLDMT-DECK MOUNT	2	20-78	64237-05	LOCKNUT-NYLON M8-1.25	1
20-29	3002737	SHAFT, ROLLER	2	20-79	2191000.7	SPINDLE HOUSING	3
20-30	3005164	PULLEY, V-IDLER	1	20-80	38315	NUT-SPINDLE	3
20-31	311870	SPRING	1	20-81	38348-01	BEARING-SPINDLE	6
20-32	352726	BUSHING	2	20-82	64144-38	SNAP-RING	3
20-33	360667	ADAPTER	1	20-83	2183070-01	SPINDLE (USED IN ASSY 2186207)	1
20-34	361282	ROD, IDLER	1		2183070-02	SPINDLE (USED IN ASSY 2186205)	2
20-35	38297	IDLER, 5 OD FLANGED	1	20-84	64123-68	BOLT-HEX 5/16-18X1	4
20-36	38524	KNOB-4 PRONG 3/8-16	4				
20-37	3970189	SLEEVE-IDLER PIVOT	1				
20-38	3970192	SPACER-STATNARY IDLER	1				
20-39	3970261	BLADE, HIGH LIFT	3				
20-40	48393	PULLEY-V IDLER	1				
20-41	552824	BUSHING	4				
20-42	64001-1	NUT-HEX JAM,5/8-18	1				
20-43	64018-15	BLT-CRG 5/16-18X1	20				
20-44	64018-18	BLT-CRG 3/8-16X2	1				
20-45	64123-16	BOLT	3				
20-46	64123-171	BOLT-HEX 3/8-16X3-1/2	1				
20-47	64123-206	BLT-HEX 5/8-11X4-1/2	1				
20-48	64123-208	BLT-HEX 5/8-18X1.5	3				
20-49	64123-209	BLT-HEX 5/8-18X3.5	3				
20-50	64123-217	BLT-HEX 3/8-16X4-1/4	4				

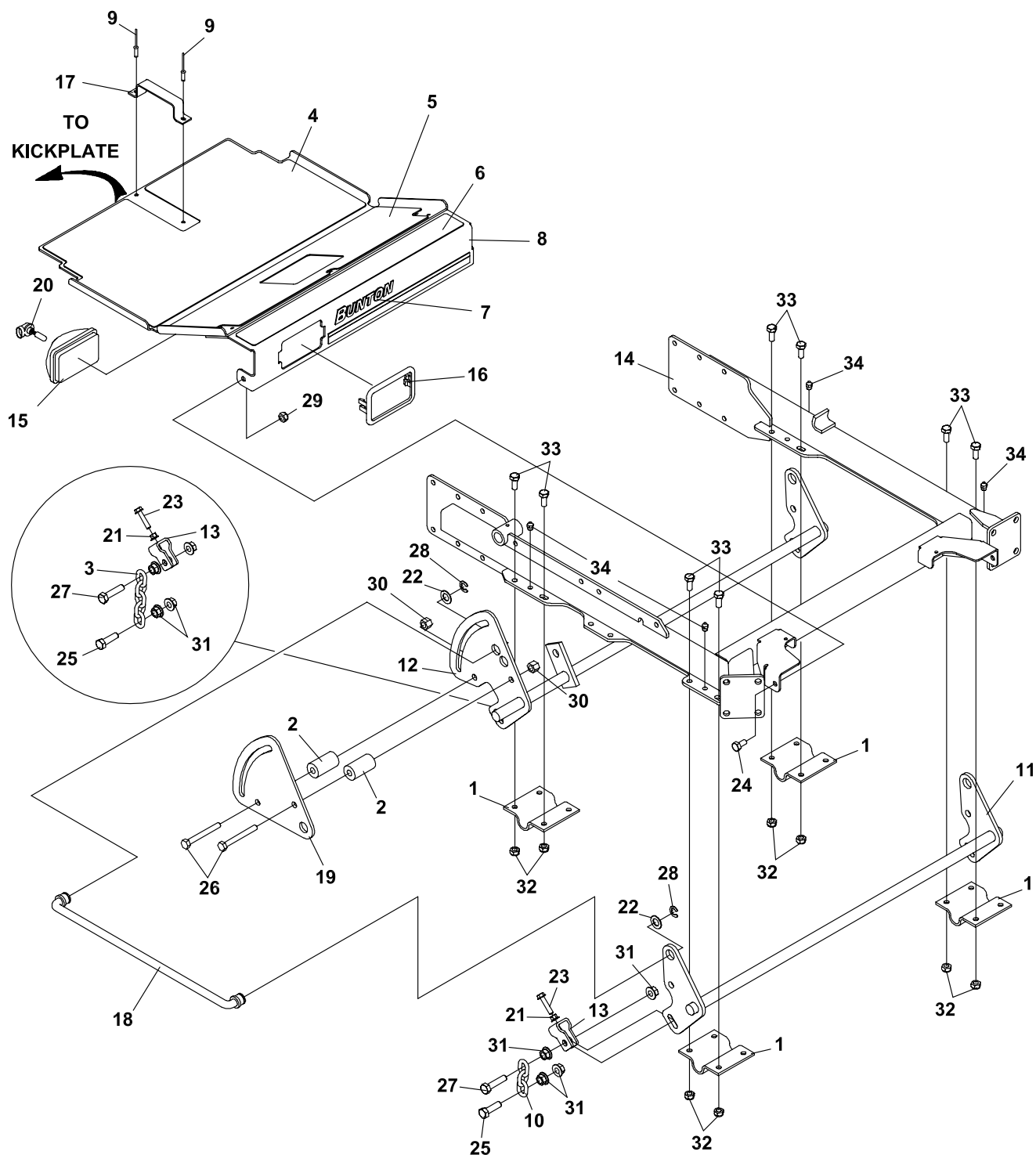


2186207-ASSY TOP MOUNT SPINDLE
2186205-ASSY TOP MOUNT SPINDLE
(INCLUDES ITEMS 33-37)

BZT 2000 EFI Series



FIGURE 21





BZT 2000 EFI Series

CRADLE ASSEMBLY-72"

2722185-21

FIGURE 21

ITEM	PART NO.	DESCRIPTION	QTY	ITEM	PART NO.	DESCRIPTION	QTY
21-1	2182356.7	BRKT-SHAFT HANGER	4				
21-2	2183077	SPCR-DKLIFT ACTUATOR	2				
21-3	2188127	CHAIN-6.35 (.250) 5 LINKS	2				
21-4	2721859	MAT-FOOT PLATE LOWER	1				
21-5	2721860	MAT-FOOT PLATE MIDDLE	1				
21-6	2721861	MAT-FOOT PLATE UPPER	1				
21-7	2721992	LABEL-BUNTON STRIPE	1				
21-8	2721868	S-FOOT PLATE W/LABS	1				
		(INCLUDES ITEMS 4-6)					
21-9	64215-07	RIVET-POP IFI #84	2				
21-10	2722454	CHAIN-6.35 (1/4) 3 LINKS	2				
21-11	2722558.5	WLDMT-DECK LIFT, FRONT	1				
21-12	2722614.5	WLDMT-ELECTRIC LIFT	1				
21-13	2722630	CLIP-DECK HEIGHT ADJ	4				
21-14	2722723.5	WLDMT-CRADLE	1				
21-15	3010329	LAMP-FLOOD 12V	1				
21-16	3010330	KIT, SNAP MOUNT BEZEL	1				
21-17	32418-04	HANDLE W/SLOT	1				
21-18	4109960	ROD-DECK LIFT	2				
21-19	4112962.5	PLATE-DECK LIFT OUTER	1				
21-20	5003693	S-894 12V BULB	1				
21-21	64141-2	NUT-WLF 1/4-20	4				
21-22	64163-65	WSHR.890X1.375X18GA	8				
21-23	64197-020	BLT-TDFM 1/4-20X1-1/2	4				
21-24	64205-007	BLT MET M10-1.50X20	2				
21-25	64205-029	BLT-MET M12X1.75X40	4				
21-26	64263-022	BLT-FLG HD M12-1.75 X 90	2				
21-27	64205-060	BLT-MET M12-1.75X50	4				
21-28	64221-04	E-RING .875	4				
21-29	64237-03	LOCKNUT-NYLON M10-1.5	2				
21-30	64265-06	NUT-FL NYL LOCK M12-1.75	2				
21-31	64246-04	NUT-WHIZ M12-1.75	16				
21-32	64265-05	NUT-FL NYL LOCK M10-1.5	15				
21-33	A1104057	BOLT-M10-1.50X25	15				
21-34	85051	ZERK-1/8 PIPE	6				



World Class Quality, Performance And Support

Equipment from Textron Golf, Turf & Specialty Products is built to exacting standards ensured by ISO 9001 registration at all our manufacturing locations.

A worldwide dealer network and factory-trained technicians backed by Textron Parts Xpress provide reliable, high-quality product support.



BOB-CAT BUNTON CUSHMAN JACOBSEN RANSOMES RYAN

1451 Marvin Griffin Rd, Augusta, GA 30906
www.textron.com