



Product Type: BZT1000

Ref. No. 018

# Bunt on

## Service Bulletin J599

---

---

June 2002

### **Pump Arm Kit 970267**

**Models Affected:  
642104, 642105, 642109**

### **Issue**

We have released a Pump Arm Kit **970267** for the BZT1000. This kit will provide additional pump stroke in reverse for better reverse speeds and drive.

### **Correction**

The kit includes all parts and instructions necessary to install. See the attached instructions.

### **Effective Serial Number**

Serial numbers 64210500101 up to and including 64210500395.

All 642104.

All 642109.

### **Warranty**

For machines in warranty you may claim the kit and 1 hour of labor to install. Machines out of warranty please contact the Johnson Creek Service Department.

### **Parts Involved**

4118528.7 - Pump Arm LH

4118074.7 - Pump Arm RH

4118526.7 - Stop Bracket

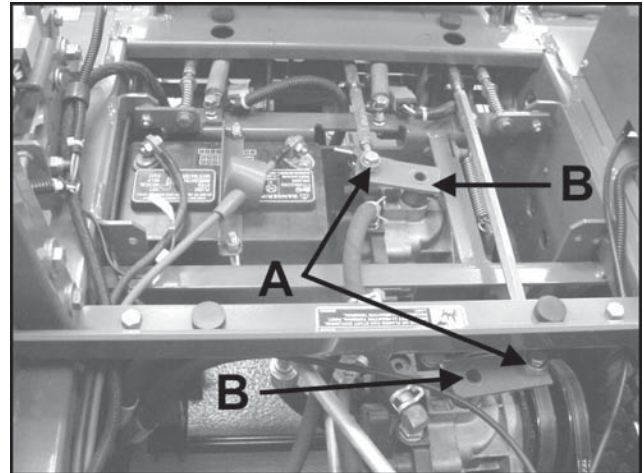
If you have any questions about this bulletin, please contact the Textron Turf Care And Specialty Products Service Department at 920-699-5890.



**INTRODUCTION:** This instruction sheet covers the installation of the new pump arms to increase the rotation of the traction pump control shaft(s) to provide increased speed and torque in reverse.

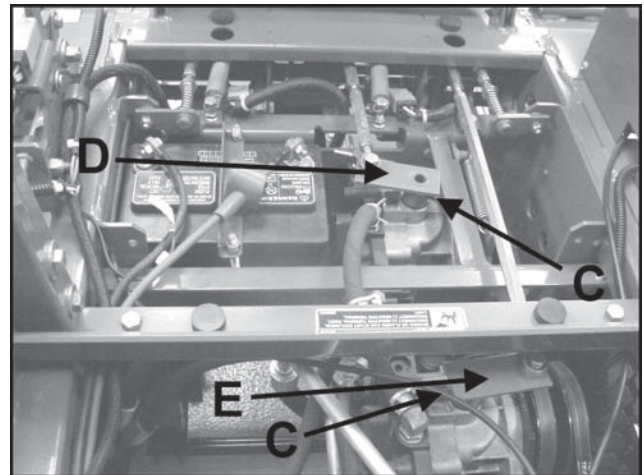
**NOTE:** All references to right and left are in respect to an operator seated on the tractor.

1. Park your ZT-100 on a level surface, engage the parking brake, shut off the engine and remove the key from the ignition.
2. Disconnect the control rod ends **A** from the pump arms **B**.



**NOTE:** Parts list located on Page 5.

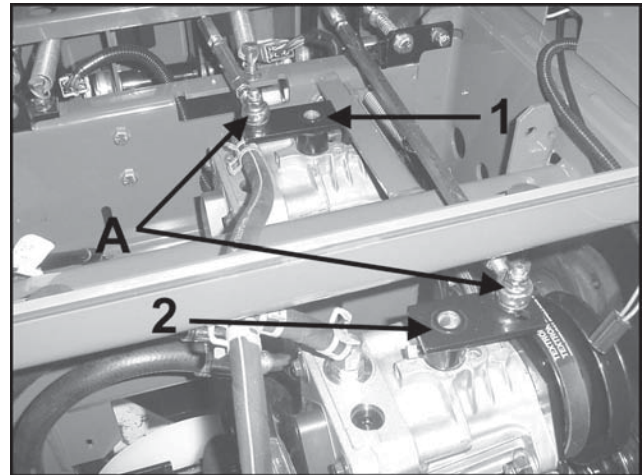
3. Remove set screw **C** from the left side pump arm **D** and retain for later use. Remove left side pump arm **D** and replace with matching pump arm **1** supplied in kit.  
**NOTE:** The matching pump arm has the set screw positioned at the same angle in the hub.
4. Secure pump arm **1** in place with the set screw previously removed.
5. Remove set screw **C** from the right side pump arm **E** and retain for later use. Remove right side pump arm **E** and replace with the remaining pump arm **2** supplied in kit. Secure pump arm **2** in place with the set screw previously removed.
6. Check the reverse return adjustment, Page 5, and correct if necessary. This must be done before installation of the rest of this kit.



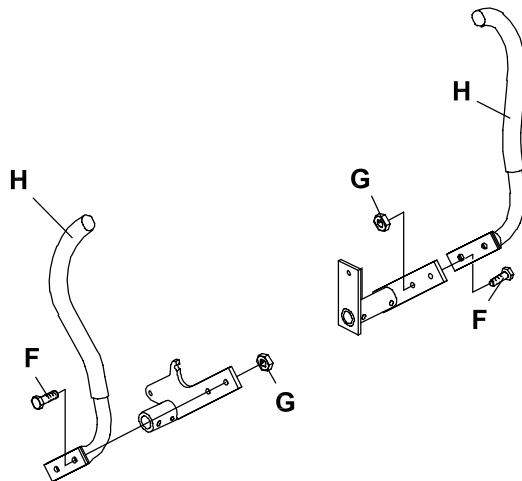


7. Reinstall the control rod ends **A** to the front hole (see photo) of the left side pump arm **1** and the right side pump arm **2**.

**NOTE:** Use the hole on the pump arms that are closest to the front.



8. Remove and discard the (4) bolts **F** and (4) nuts **G** that mount the traction control handles **H**.



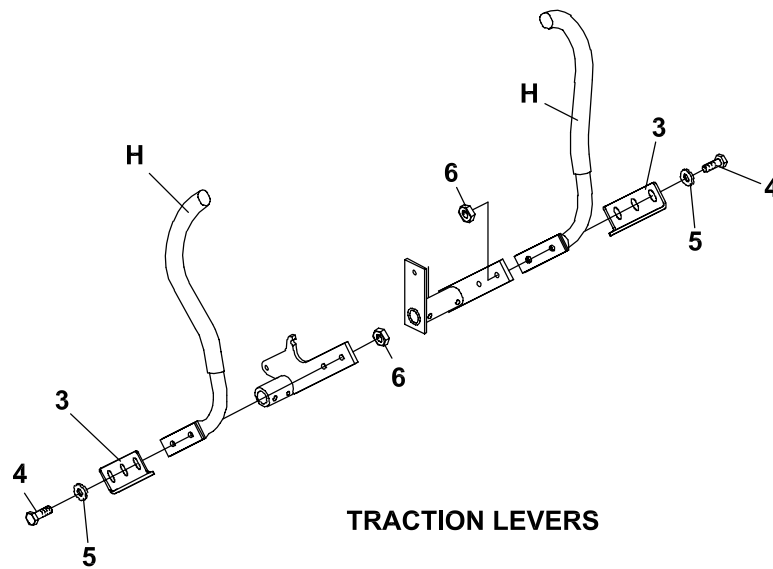
TRACTION LEVERS



9. Install the stop brackets **3**, provided in the kit to the traction control handles **H**, using (4) 3/8-16X1-1/4" bolts **4**, (4) flat washers **5** and (4) 3/8-16 nylon locknuts **6** as shown.

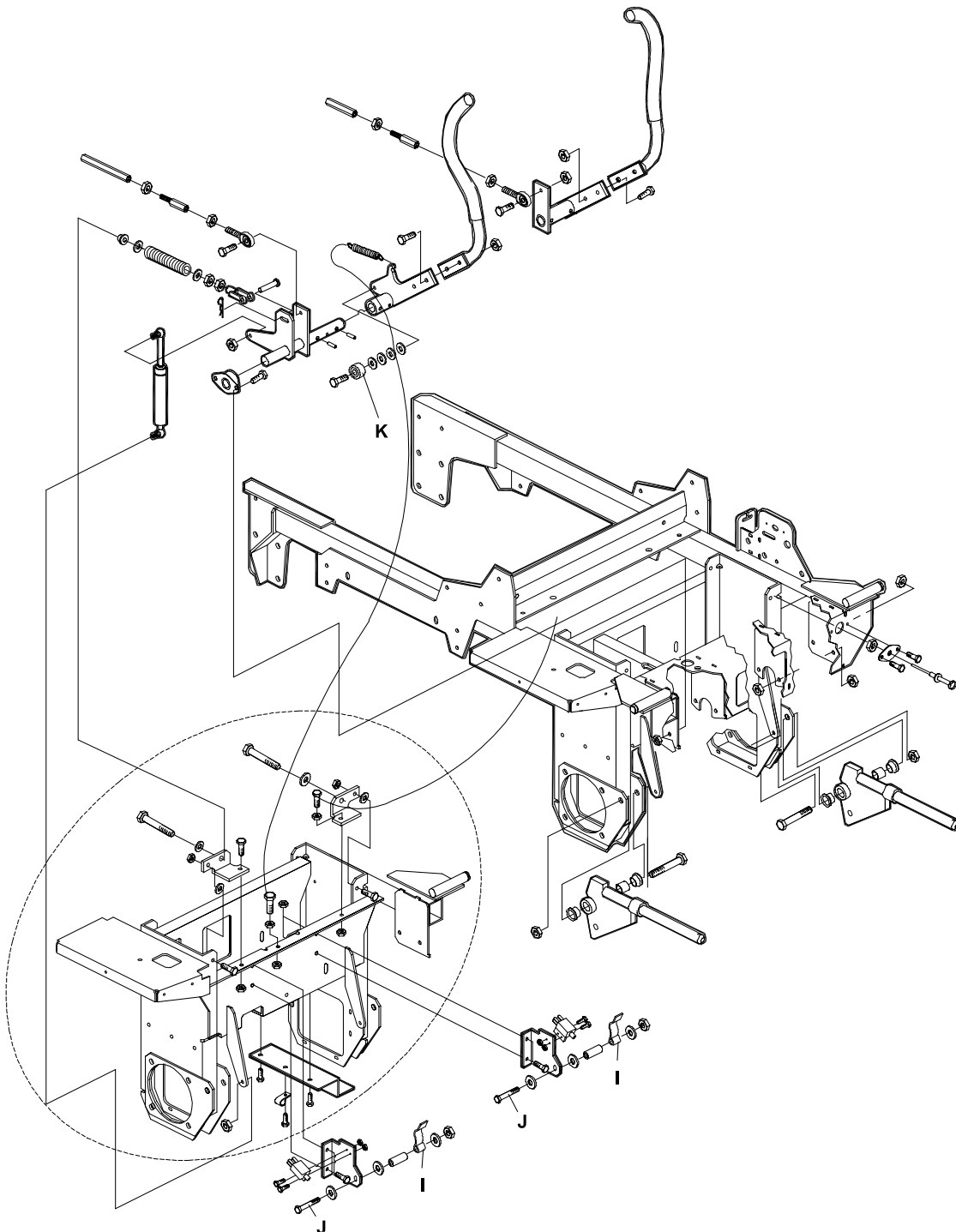
**NOTE:** Be sure the new stop brackets **3** contact the frame prior to the hydro control shaft(s) stopping against the internal stops of the pumps.

10. Readjust the hydrostat neutral position. See Page 5.





11. Readjust position of switch lever **I**, by loosening bolt **J** and moving it's position to center the form on bearing **K** with the control lever in the neutral position. Retighten bolt **J** at this time.

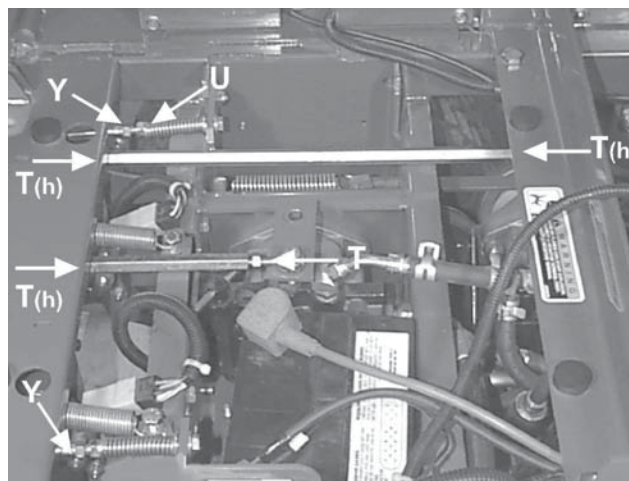




## Reverse Return:

**NOTE:** The reverse return adjustment must be made before installation of Item 3, or the full benefit of this kit will not be realized.

1. Move traction levers to neutral and raise the seat.
2. Locknuts **U** should be run on the bolt as far as they will go.
3. Loosen jam nuts **Y**. Move the traction levers to their forward stop. Adjust the clevis yoke by turning the head of the bolt until the pin through the clevis yoke is up against the back end of the slot in the traction control shaft lever. Once the initial setting is made for both sides, the levers may be evened up by adjusting the how far the bolt is turned into the clevis. Tighten jam nut **Y**.



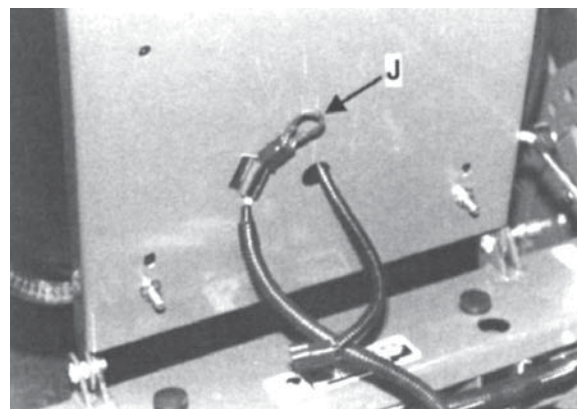
**NOTE:** A slight creep in reverse is acceptable provided the wheel does not turn and the hydrostat pump does not whine when the parking brake is on. The reverse return should be adjusted and set before neutral is set on the hydrostatic transmissions.

## HYDROSTAT NEUTRAL ADJUSTMENTS

A turnbuckle-style hydrostat neutral adjustment is provided.

### Neutral:

1. Support the machine with the drive wheels off the ground. Use jackstands or equivalent support. Do not rely only on mechanical or hydraulic jacks.
2. Move the traction levers into the neutral position and raise the seat and grass collection hopper or utility box.
3. Disconnect the seat switch and temporarily connect the two terminals with jumper wire **J** as shown.
4. Loosen jam nuts **T** (h) =hidden) at both ends of the turnbuckle.
5. Start the engine and run at low speed.
6. Hold one of the traction control levers up against the resistance of the reverse return spring. Rotate the corresponding turnbuckle until the wheel it controls turns in reverse, then rotate the turnbuckle in the opposite direction until the wheel stops turning. Lock the turnbuckle jam nuts. Run the engine up to high idle and stroke the pump in forward and reverse to check the adjustment. Re-adjust if necessary.
7. Repeat steps 4 through 6 for the opposite side.
8. Remove the jumper wire and reconnect the seat switch. Lower the grass collection hopper or utility box



## KIT PARTS LIST

ITEM	PART NO.	DESCRIPTION	QTY
1	4118528.7	WLDMT-PUMP ARM LH	1
2	4118074.7	WLDMT-PUMP ARM RH	1
3	4118526.7	BRACKET-STOP	2
4	64123-16	BLT-HEX 3/8-16X1-1/4	4
5	64163-31	WASHER, 25/64X1X12	4
6	64229-03	LOCKNUT-NYLON 3/8-16	4