



OWNER/OPERATOR'S MANUAL & ILLUSTRATED PARTS LIST

MODEL:

73-70805 TREE FARM MOWER 44 MC400



WARNING: If incorrectly used this machine can cause severe injury. Those who use and maintain this machine should be trained in its proper use, warned of its dangers and should read the entire manual before attempting to set up, operate, adjust or service the machine.



09-323 REV A

CALIFORNIA
Proposition 65 Warning

Diesel engine exhaust and some of its constituents are known to the State of California to cause cancer, birth defects and other reproductive harm.



WARNING

The engine exhaust from this product contains chemicals known to the State of California to cause cancer, birth defects or other reproductive harm.

Californie Proposition 65
Avertissement

Les échappements des moteurs diesel et certains de leurs composés sont reconnus par l'Etat de Californie pour être cancérigènes, provoquer des défauts congénitaux et d'autres dangers en matière de reproduction.



AVERTISSEMENT

L'émission du moteur de ce matériel contient des produits chimiques que l'Etat de Californie considère être cancérigènes, provoquer des défauts congénitaux et d'autres dangers en matière de reproduction.

California Advertencia
de la Proposicion 65

El estado de California hace saber que los gases de escape de los motores diesel y algunos de sus componentes producen cáncer, defectos de nacimiento y otros daños en el proceso de reproducción humana.



ADVERTENCIA

El estado de California hace saber que los gases de escape de este producto contienen productos químicos que producen cáncer, defectos de nacimiento y otros daños en el proceso de reproducción humana.

TREE FARM MOWER

IMPORTANT MESSAGE

Thank you for purchasing this Jacobsen product. You have purchased a world class product, one of the best designed and built anywhere.

This product comes with an Owner/Operator's Manual. The useful life and good service you receive from this product depends to a large extent on how well you read and understand this manual. Treat this product properly and adjust it as instructed, and it will give you many years of reliable service.

See a Jacobsen dealer for any service or parts needed. Jacobsen service ensures that you continue to receive the best results possible from Jacobsen products. You can trust Jacobsen replacement parts because they are manufactured with the same high precision and quality as the original parts.

Jacobsen designs and builds its equipment to serve many years in a safe and productive manner. For longest life, use this product only as directed in the manual, keep it in good repair and follow safety warnings and instructions. You'll always be glad you did.

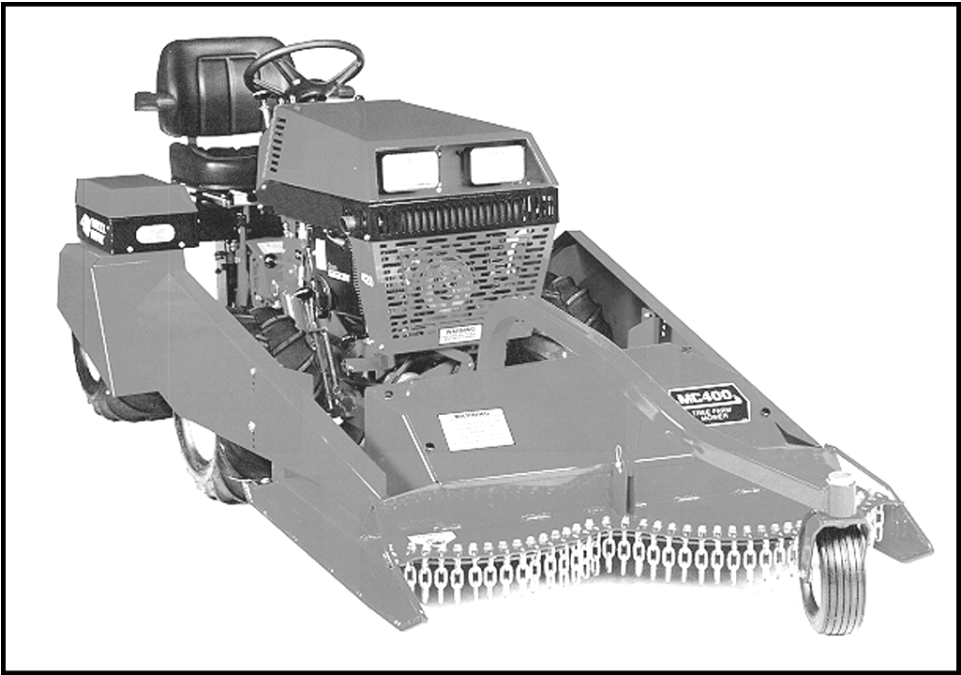
Jacobsen, a Textron Company
One Bob Cat Lane
Johnson Creek, WI 53038-0469

TABLE OF CONTENTS	FIGURES	PAGE
INTRODUCTION / SPECIFICATIONS		2
SAFETY		3, 4
ASSEMBLY INSTRUCTIONS		5
INSTALLATION		6
OPERATION		7
SERVICE		8-10
PARTS SECTION		11
MAIN DECK	FIGURE 1	12, 13
FRAME AND HITCH PARTS	FIGURE 2	14, 15
FRONT WHEEL SHIELDS	FIGURE 3	16, 17
REAR WHEEL SHIELDS	FIGURE 4	18, 19
GEARBOX (A)	FIGURE 5	20, 21
GEARBOX (B)	FIGURE 6	22, 23
GEARBOX (C)	FIGURE 7	24, 25
GEARBOX (D)	FIGURE 8	26, 27



DESCRIPTION

The Model MC400 Tree Farm Mower is designed to fit the 420 tractor equipped with standard tires or optional 20 X 8.00-10 turf type tires. The mower is easy to attach and detach in a minute or less allowing interchange with many other front mounted attachments. Cutting height is controlled by the front caster wheel. Exceptional visibility and maneuvering is possible with this front mounted design mower. Shielded tractor wheels keep the unit from damaging the lower branches of young trees or shrubs. Two mowing blades discharge grass to the rear and enable the mower to cut tall grass. This is an ideal unit for mowing between closely spaced rows of trees or shrubbery.



SPECIFICATIONS

Mower Overall Width	45-1/2"
Cutting Width	44"
Overall Length	79" including wheel shields
Rear Fender Width with 20 X 8.00-10 turf tires	43-1/4"
Rear Fender Width with standard tires	46-1/4"
Cutting Height	2" to 5"
Mower Drive	PTO Belt
Spindle Drive	Gearbox and 2 V-belts
Spindle Bearings	1" Ball Bearings
Blades	2 Blades, 22-1/2"
Discharge	Rear
Caster Wheel	10 X 3.5, Semi-pneumatic
Weight	272 lbs. approx.

NOTICE !!!

Unauthorized modifications may present **extreme** safety hazards to operators and bystanders and could also result in product damage.

Jacobsen, a Textron Company strongly warns against, rejects and disclaims any modifications, add-on accessories or product alterations that are not designed, developed, tested and approved by Jacobsen Engineering Department. Any Jacobsen product that is altered, modified or changed in any manner not specifically authorized after original manufacture—including the addition of “after-market” accessories or component parts not specifically approved by Jacobsen—will result in the Jacobsen Warranty being voided.

Any and all liability for personal injury and/or property damage caused by any unauthorized modifications, add-on accessories or products not approved by Jacobsen will be considered the responsibility of the individual(s) or company designing and/or making such changes. Jacobsen will vigorously pursue full indemnification and costs from any party responsible for such unauthorized post-manufacture modifications and/or accessories should personal injury and/or property damage result.



This symbol means:
ATTENTION!
BECOME ALERT!

Your safety and the safety of others is involved.

Signal word definitions:

The signal words below are used to identify levels of hazard seriousness. These words appear in this manual and on the safety labels attached to Jacobsen machines. For your safety and the safety of others, read and follow the information given with these signal words and/or the symbol shown above.

DANGER

DANGER indicates an imminently hazardous situation which, if not avoided, **WILL** result in death or serious injury.

WARNING

WARNING indicates a potentially hazardous situation which, if not avoided, **COULD** result in death or serious injury.

CAUTION

CAUTION indicates a potentially hazardous situation which, if not avoided, **MAY** result in minor or moderate injury. It may also be used to alert against unsafe practices or property damage.

CAUTION

CAUTION used without the safety alert symbol indicates a potentially hazardous situation which, if not avoided, **MAY** result in property damage



MODEL NUMBER: This number appears on sales literature, technical manuals and price lists.

SERIAL NUMBER: This number appears only on your mower. It contains the model number followed consecutively by the serial number. Use this number when ordering parts or seeking warranty information.

GENERAL SAFETY

1. Read and understand the Owner's Manual before attempting to operate this machine.
2. Operate all controls from the operator's seat. **NO RIDERS.**
3. Keep all shields in place and safety switches adjusted properly.
4. Do not leave equipment unattended. STOP the engine and remove the key.
5. Do not allow minors or the inexperienced to operate this machine.
6. Keep people and pets a safe distance away from machine using power driven attachments. Injury could result from flying debris.

OPERATING SAFETY

1. **STOP ENGINE** to make repairs or adjustments. Do not attempt to work on unit or attachments with the engine running.
2. Before leaving the operator's seat:
 - Disengage mower drive.
 - Set Parking brake.
 - Stop Engine.

DANGER

KEEP HANDS AND FEET AWAY FROM ROTATING BLADES.

CAUTION

BE ALERT FOR DEBRIS IN THE PATH OF THE MOWER. STICKS, STONES AND OTHER OBJECTS CAN CAUSE SERIOUS DAMAGE TO THE ATTACHMENT.

1. Remove mower from crate.
2. Remove top shield and remove bag of small fastener parts. Separate according to size.
3. If optional 20 X 8.00-10 turf-type tires are being used, move each wheel hub in toward the center of the tractor a distance of 3/4 inch or a total distance of 1-1/2 inches from the end of the axle. Mount optional tires in the usual manner.
4. Remove the drive pulley shield and install drive belt Part No. 81-A040. Replace shield. Attach the mower to the tractor quick-hitch front lift in the usual manner.
5. Fill gearbox to 1/8" pipe plug on front of gearbox with 80/90 gear oil.
6. To install front skirts - Mount directly on deck mounts using a 3/8 x 3/4 flange bolt and nut at the front. When using standard tires, fasten skirts to rear of mower at desired height with 2" spacers and 5/16 X 2-3/4 bolts and nuts on each side. If optional 20 x 8.00-10 tires are used, fasten skirts to rear of mower at desired height using two 5/16 X 3/4 bolts and nuts on each side. (See Parts Figure 3)
7. To install rear wheel skirts - Remove front and rear fenders saving the bolts and nuts. Replace the fenders with the skirts using the same bolts and nuts. Two sets of mounting holes are provided. One set is for narrow setting with the 20 x 8.00-10 turf-type tires. The other set of holes is for use with standard bar type tires. (See Photo 5 and Parts Figure 4) Install support brackets from parts package to tread plate using the same bolts which fastened the fenders to tread plate. Attach brackets to skirts with 1/4 x 3/4 flange bolts and nuts.
8. Do not use both bar tires and turf tires at the same time. This is important because the tires are not the same size and the rolling radius is different. Different size tires could cause premature failure of the transaxles.

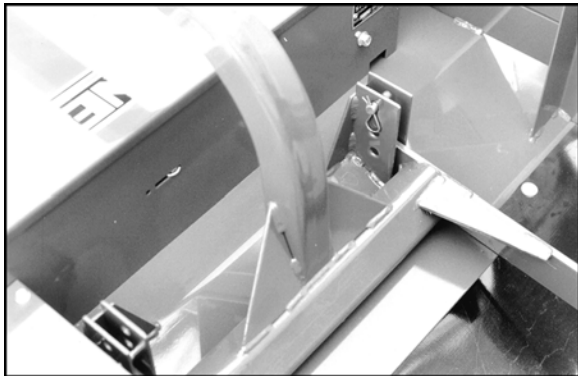


ATTACHING MOWER TO TRACTOR:

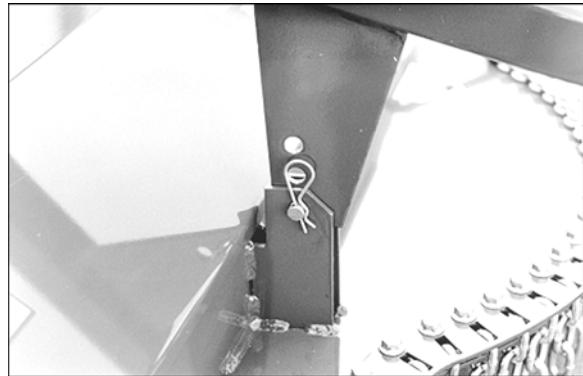
1. Operate latch control to open hitch latches.
2. Drive tractor into position aligning the quick hitch.
3. Be sure both latches engage fully and are laced in the locked position.

NOTE: Stop engine! Do not attempt to install drive belt with engine running.

4. Release idler assembly to facilitate easy installation of the drive belt.
5. Put belt over drive pulleys and engage idler assembly.
6. Set mower to desired cutting height by moving the 3 clevis pins at the 3 attaching points of the support frame. See photos below for front and rear height adjustment.
7. Start engine and engage PTO slowly to prevent shock load on mower components.
8. Mow with front lift lever in "FLOAT" position only.



REAR HEIGHT ADJUSTMENT



FRONT HEIGHT ADJUSTMENT



Observe all Safety Decals.

Keep all Shields in place.

Do not operate mower with other persons in the area. Irregularities in ground surface can permit foreign material to be propelled from beneath deck to cause serious injury or death.

Before leaving tractor, move Forward - Reverse control to neutral position, disengage PTO, set parking brake, lower mower deck and stop engine.

Remove key from ignition if maintenance procedures are to be performed or tractor is to be left unattended.

OPERATING INSTRUCTIONS

- Set mower cutting height. See Installation Page 6.
- Mow with front lift lever in "FLOAT" position only.
- Engage PTO slowly at low engine r.p.m.
- Mower is designed to operate at full throttle for heavy mowing, but 3/4 throttle is adequate for average conditions.
- Set mower blade speed with the throttle and control ground speed with the Forward - Reverse control lever.
- Trimming can be done along either side of the mower deck. Wheel shields keep the unit from damaging the lower branches of young trees.
- Use extreme caution when operating on hills.
- A roll bar is recommended.
- Mow up and down hills whenever possible.
- A rear weight bar with 2 weights is recommended.



The mower deck is enclosed on all sides to prevent foreign material from being propelled from beneath deck toward operator or bystanders. Keep all shields in place!

MAINTENANCE

Daily maintenance:

Visual inspection for loose parts and accumulation of grass and dirt.
Clean accumulation of grass clippings from beneath deck daily for better mowing performance.
Keep blades sharp. Check the tips of the blades for wear.

25 hour maintenance:

In addition to daily maintenance, grease caster, slip yoke and all bearings.
Remove top shield and grease spindle bearings. Grease the spindle bearings beneath the deck also.
Do not overgrease.
Check gearbox oil level, fill to 1/8" pipe plug on front of gearbox with 80/90 gear oil.

Annual Maintenance:

In addition to daily and 25 hour maintenance, check the drive belts for cracks or wear. Rotate each spindle to check for roughness which would indicate bearing wear. Remove and sharpen blades, clean and wash deck prior to storage. The acid in grass clippings causes premature corrosion and rusting of mower parts.

ADJUSTMENTS

Sharpening blades:

Be careful while sharpening blades that the corners of the blade do not become rounded at the tips. This reduces the blades overlap and will cause skipping. While sharpening, it is essential to ensure the balance of the blades is maintained to prevent vibration. Blade bolt torque should be 75-85 foot pounds. Rotate blades after re-installing to check for bent or bowed blades and blade alignment.

Blade alignment:

When installing sharpened blades or new blades be sure the mating surfaces are clean and the retaining washer is not bent. Check for bent blades by rotating blades until tips are near each other.

Leveling mower deck:

The front to rear and side to side leveling adjustment is provided by 3 clevis pins.

Example for low cutting: If rear pins are in the top hole, the front pin will be in the bottom hole.

If the rear pins are moved down one hole, the front pins will be moved up one hole.



Changing Main Drive Belts

- 1. Remove the top shield.
- 2. Release the idler springs and remove upper drive belt.
- 3. Remove the 4 bolts from the right spindle support. Tilt the support and remove the lower drive belt.

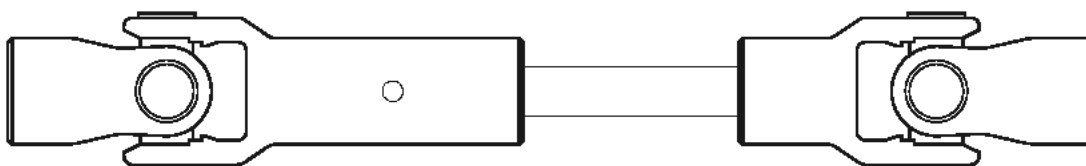
NOTE: This support will move far enough to allow the lower belt to be removed and installed without loosening any spindle bearings.

- 4. Install the new lower belt.
- 5. Re-install the right spindle support, and install the new upper belt.
- 6. Hook the idler springs to the idler arms, and replace the top shield.

CAUTION

ALIGNMENT OF U-JOINTS

Whenever the drive shaft u-joints are disconnected it is necessary to align the two u-joints when reconnecting the square shaft. It is possible to assemble the joints 90 degrees from correct alignment. Incorrect alignment will cause excessive vibration and shorten joint life. See diagram below.



Correct U-Joint Alignment



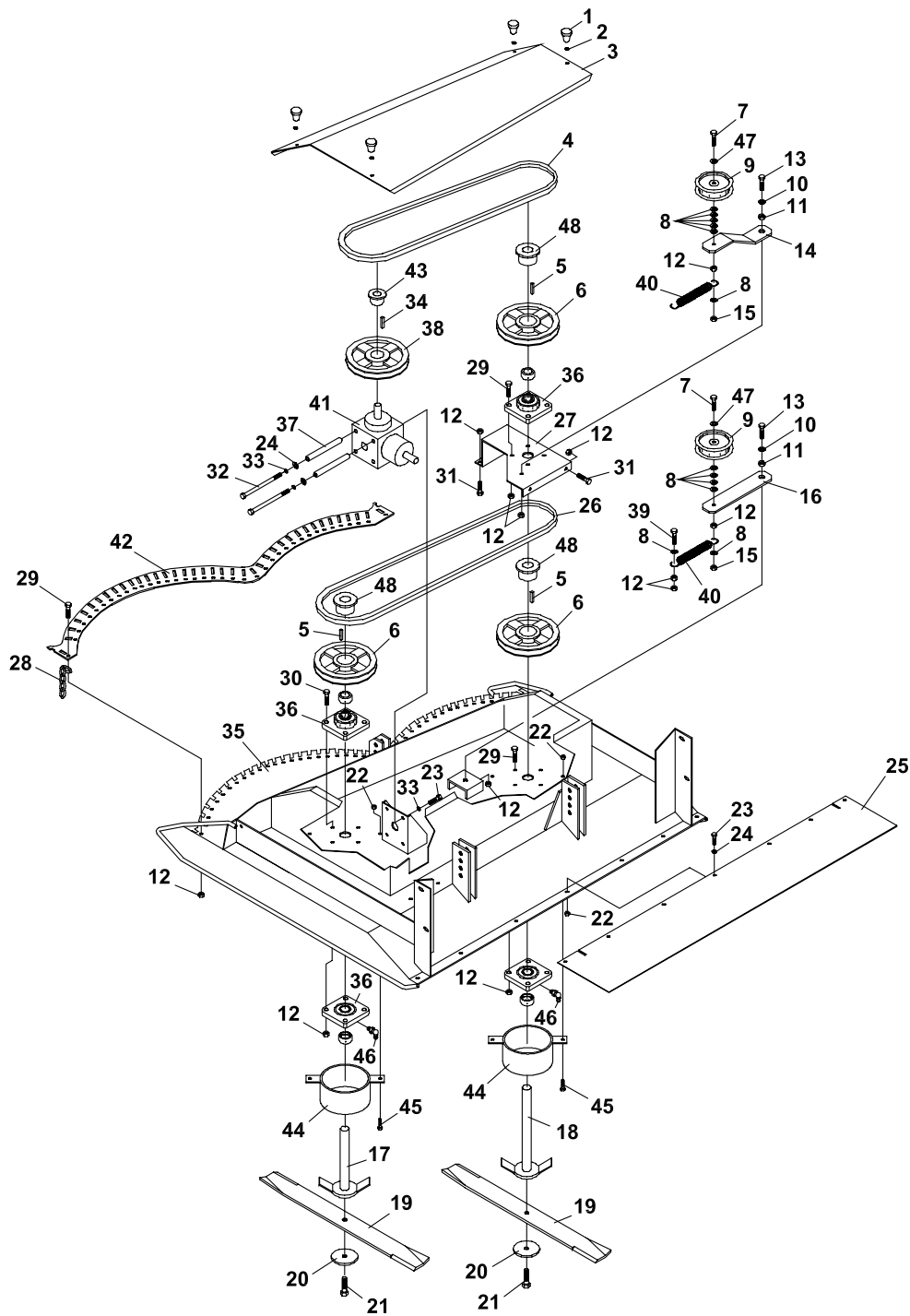
SERVICE NOTES:

PARTS SECTION

MAIN DECK

FIGURE 1

TREE FARM
MOWER



TREE FARM MOWER

MAIN DECK

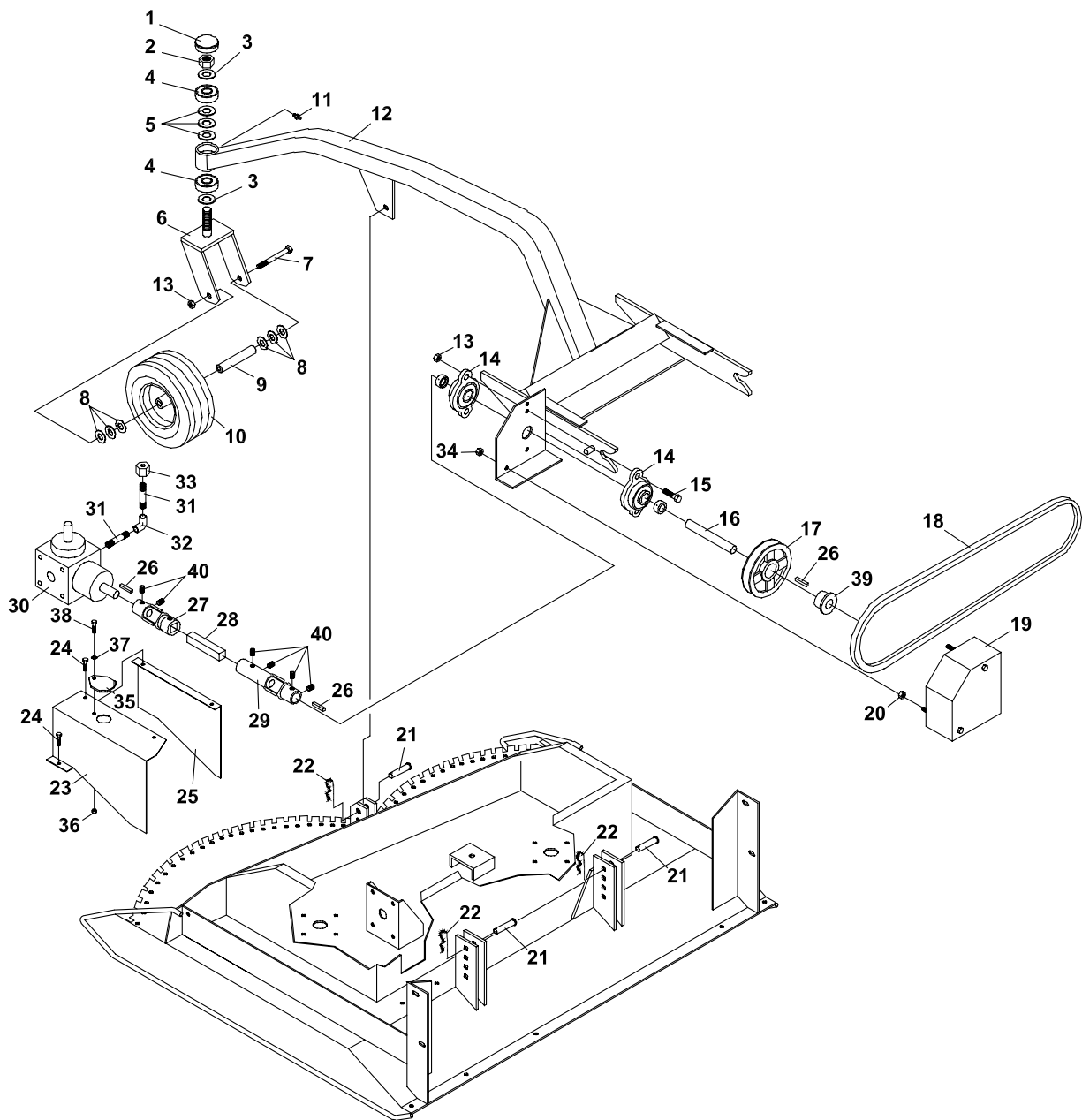
FIGURE 1

ITEM	PART NO.	DESCRIPTION	QTY	ITEM	PART NO.	DESCRIPTION	QTY
1-1	47-077	KNOB-SMALL WITH STUD	4	1-39	64123-70	BOLT-HEX 3/8-16X1-1/2	1
1-2	64002-04	LOCKWASHER, EXT. 5/16	4	1-40	41-052	SPRING EXTENSION	2
1-3	60-611	SHIELD-TOP	1	1-41	87-239	GEARBOX	1
*	00-093	DECAL-OWNER'S MANUAL	1	1-42	64-802.7	CHAIN RETAINER	1
*	00-195	DECAL-MODEL MC400	1	1-43	83-H12	BUSHING-3/4	1
1-4	81-B063	BELT-B63	1		(SN 1103 -)		
1-5	64164-10	1/4X1/4X1-1/4 MACH KEY	3	1-44	80-249.7	GUARD-SPINDLE	2
1-6	83-BK6516	PULLEY	3	1-45	64139-08	BOLT-5/16-18X3/4 WLF	4
	(SN 1001 - 1025)			1-46	29-014	GREASE FITTING, 1/4-28 90	2
	83-BK65H	PULLEY	3	1-47	64163-61	WSHR .81X.406X16GA	2
	(SN 1026 -)			1-48	83-H16	BUSHING-1"	3
1-7	64123-82	BOLT-HEX 3/8-16X2-1/2	2		(SN 1026 -)		
1-8	64163-61	WSHR .81X.406X16GA	13				
1-9	83-029	FLAT IDLER-4-1/2"	2				
1-10	64-799	WASHER-13/32IDX1-9/32OD	2				
1-11	85-B29	BUSHING-IDLER ARM	2				
1-12	64141-4	NUT-WLF 3/8-16	60				
1-13	64123-50	BOLT-HEX 3/8-16X1	2				
1-14	40-315.7	IDLER ARM, DRIVE BELT	1				
1-15	64229-03	LOCKNUT-NYLON 3/8-16	2				
1-16	40-316.7	IDLER ARM-SPINDLE BELT	1				
1-17	80-245.7	SPINDLE-SHORT	1				
1-18	80-246.7	SPINDLE-LONG	1				
1-19	79-079	BLADE-22-7/8"	2				
1-20	99-B14	WASHER-1/4 X 1/2 ID X 3 OD	2				
1-21	64123-39	BOLT-HEX 1/2-13X1-1/4	2				
1-22	64141-6	NUT, 5/16-18	11				
1-23	64123-54	BOLT, 5/16-18X3/4 HEX	11				
1-24	64163-02	WSR-.321/.328X.593/608X11	9				
1-25	44-114	DISCHARGE BELTING	1				
1-26	81-B064	BELT-B64	1				
1-27	64-801.7	SUPPORT-SPINDLE	1				
1-28	56-019-06	CHAIN-4 LINKS	38				
1-29	64139-24	BLT-WLF 3/8-16 X 1	46				
1-30	64123-87	BOLT-HEX 3/8-16X1-3/4	4				
1-31	64139-21	BLT-WLF 3/8-16X3/4	4				
1-32	90-532	BOLT-5/16 X 4	2				
1-33	64006-02	LOCKWASHER-5/16	6				
1-34	64164-11	KEY-3/16X3/16X1-1/4 SQ	1				
1-35	62-807.7	DECK-MAIN	1				
*	00-092	DECAL-HANDS AND FEET	2				
1-36	55-RCJ16	BEARING	4				
1-37	64-803	SPACER	2				
1-38	83-BK7212	PULLEY	1				
	(SN 1001 - 1102)						
	83-BK72H	PULLEY	1				
	(SN 1103 -)						

* NOT ILLUSTRATED

FIGURE 2

TREE FARM
MOWER



TREE FARM MOWER

FRAME AND HITCH PARTS

FIGURE 2

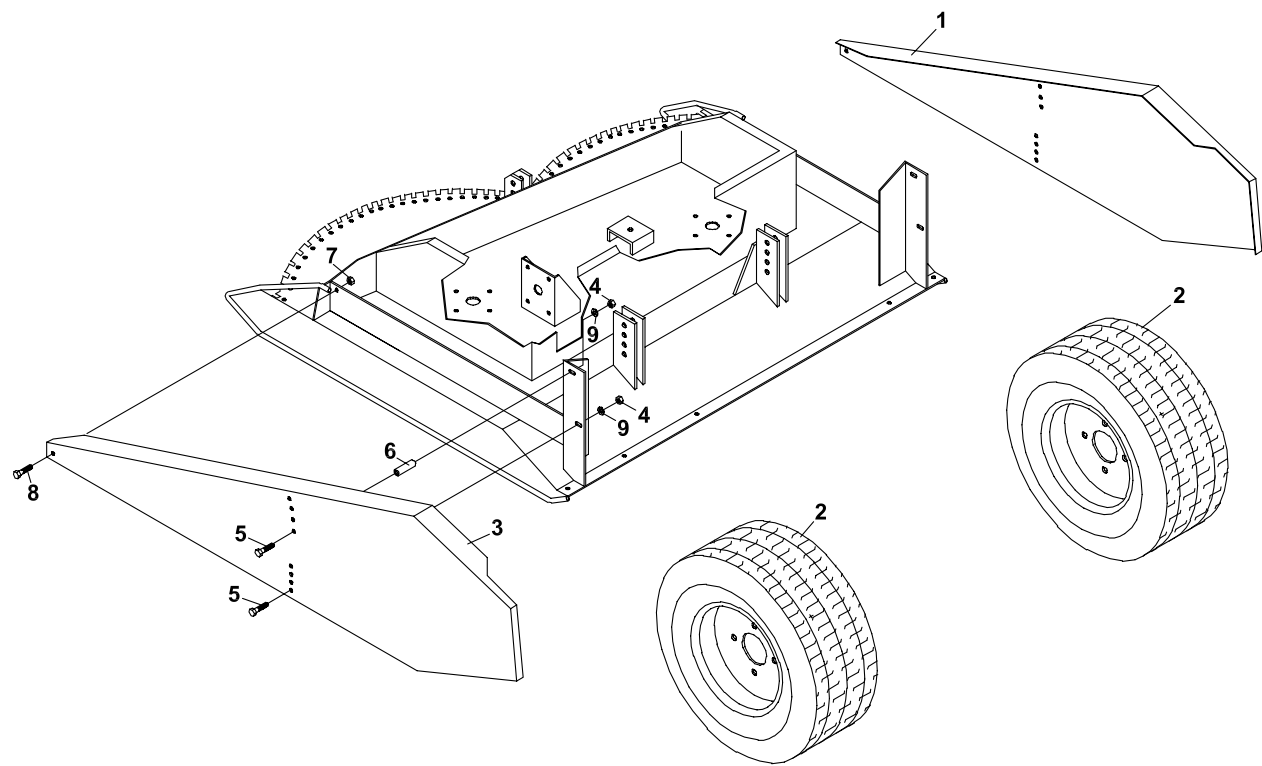
ITEM	PART NO.	DESCRIPTION	QTY	ITEM	PART NO.	DESCRIPTION	QTY
2-1	53-060	DUST CAP	1	2-28	80-247	SHAFT-DRIVE 3/4 SQ	1
2-2	99-AC12NF	FLOCKNUT-3/4 NF	1	2-29	87-163	U-JOINT-SLIP YOKE	1
2-3	64163-06	WSHR-.768/.756X1.25X14G	2	2-30	87-239	GEARBOX	1
2-4	55-Z9504AB	BALL BEARING	2	2-31	29-109	PIPE NIPPLE-1/4 NPTX2-1/2	2
2-5	99-B20	MACH WASHER-3/4-14	3	2-32	29-068	PIPE ELBOW-1/4	1
2-6	50-049.7	FRAME-CASTER WHEEL	1	2-33	24-042	CAP-1/4 PIPE VENTED	1
2-7	64123-93	BLT-HEX 3/8-16X5	1	2-34	64141-6	NUT, 5/16-18	2
2-8	64163-16	WASHER-41/64X1, 3/8X12	6	2-35	60-629.7	COVER-ACCESS	1
2-9	50-062	SHAFT-WHEEL	1	2-36	64229-01	LOCKNUT-NYLON 1/4-20	1
2-10	53-104	WHL ASSY WITH BALL BRG	1	2-37	64163-03	WSR-.256IDX.62ODX18	1
	(SN 1001 - 1140)			2-38	64123-89	BOLT-HEX 1/4-20X3/4	1
	55-G527	BALL BEARING	2	2-39	83-H12	BUSHING-3/4	1
	55-107	BEARING-5/8 ID X 1-3/8 OD	2		(SN 1103 -)		
	53-186	WHL-10.25 X 3.25 CASTER	1				
	(SN 1141 -)			2-40	85-SS14	SET SCREW-3/8 X 3/8	6
	55-112	BRG-ROLLER 5/8IDX1-3/8	1				
	53-187	RETAINER	2				
2-11	29-010	GREASE FITTING-1/4	1				
2-12	62-808.7	FRAME-HITCH	1				
2-13	64141-4	NUT-WLF 3/8-16	3				
2-14	55-FB23012	BEARING-2 BOLT FLANGE	2				
2-15	64123-70	BOLT-HEX 3/8-16X1-1/2	2				
2-16	80-248	SHAFT-DRIVE 3/4 X 5-1/2	1				
2-17	83-BK5012	PULLEY	1				
	(SN 1001 - 1102)						
	83-BK50H	PULLEY	1				
	(SN 1103 -)						
2-18	81-A040	BELT-A40	1				
2-19	60-608.7	SHIELD-DRIVE PULLEY	1				
*	00-025	DECAL-KEEP HAND AWAY	1				
2-20	64229-02	LOCKNUT-NYLON 5/16-18	2				
2-21	64188-32	PIN, CLEVIS 1/2X1-3/4	3				
2-22	02-PP0318	PRESTO PIN-3/32 X 2-5/16	3				
2-23	60-609.7	SHIELD-DRIVESHAFT LEFT	1				
2-24	64139-04	BOLT-WLF 1/4-20X3/4	4				
2-25	60-610.7	SHIELD-DRIVESHAFT RIGHT	1				
2-26	64164-11	KEY-3/16X3/16X1-1/4 SQ	3				
2-27	87-208	U-JOINT-3/4 RND X 3/4 SQ	1				
	29-060	GREASE FITTING-1/8	2				

***NOT ILLUSTRATED**

FRONT WHEEL SHIELDS

FIGURE 3

TREE FARM
MOWER



TREE FARM MOWER

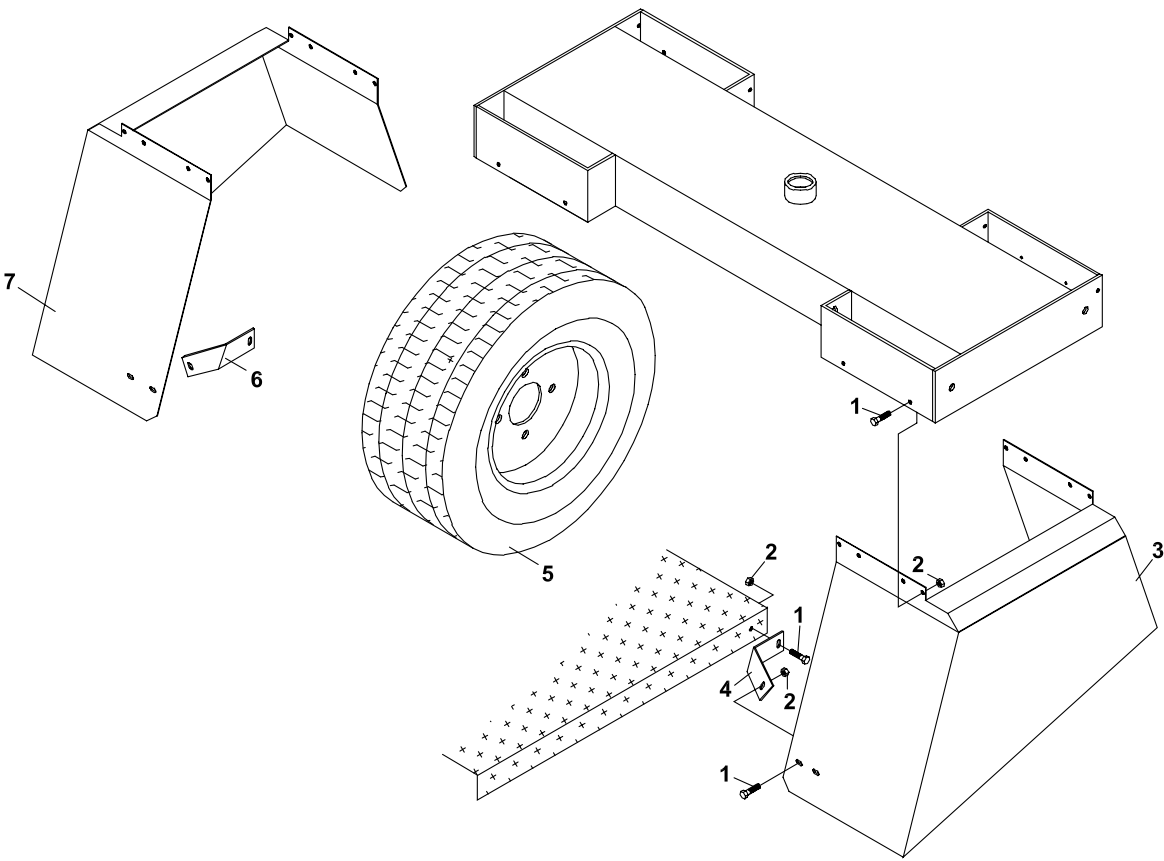
FRONT WHEEL SHIELDS

FIGURE 3

ITEM	PART NO.	DESCRIPTION	QTY	ITEM	PART NO.	DESCRIPTION	QTY
3-1	60-522.7	SHIELD-R FRONT WHEEL	1				
3-2	53-073	WHEEL ASSY	4				
		(OPTIONAL)					
	53-090	TIRE ONLY-20 X 8.00-10	1				
	53-085	RIM ONLY FOR 53-073 WHL	1				
3-3	60-521.7	SHIELD-LEFT FRONT WHL	1				
3-4	64141-6	NUT, 5/16-18	4				
3-5	64139-08	BOLT-5/16-18X3/4 WLF	4				
	90-0522	BOLT-5/16 X 2-3/4	4				
		(USE WITH 64-608 SPACER)					
3-6	64-608	SPACER	4				
		(USE WITH STANDARD BAR TIRES)					
3-7	64141-4	NUT-WLF 3/8-16	2				
3-8	64139-21	BLT-WLF 3/8-16X3/4	2				
3-9	64163-02	WSR-.321/.328X.593/.608X11	4				



FIGURE 4



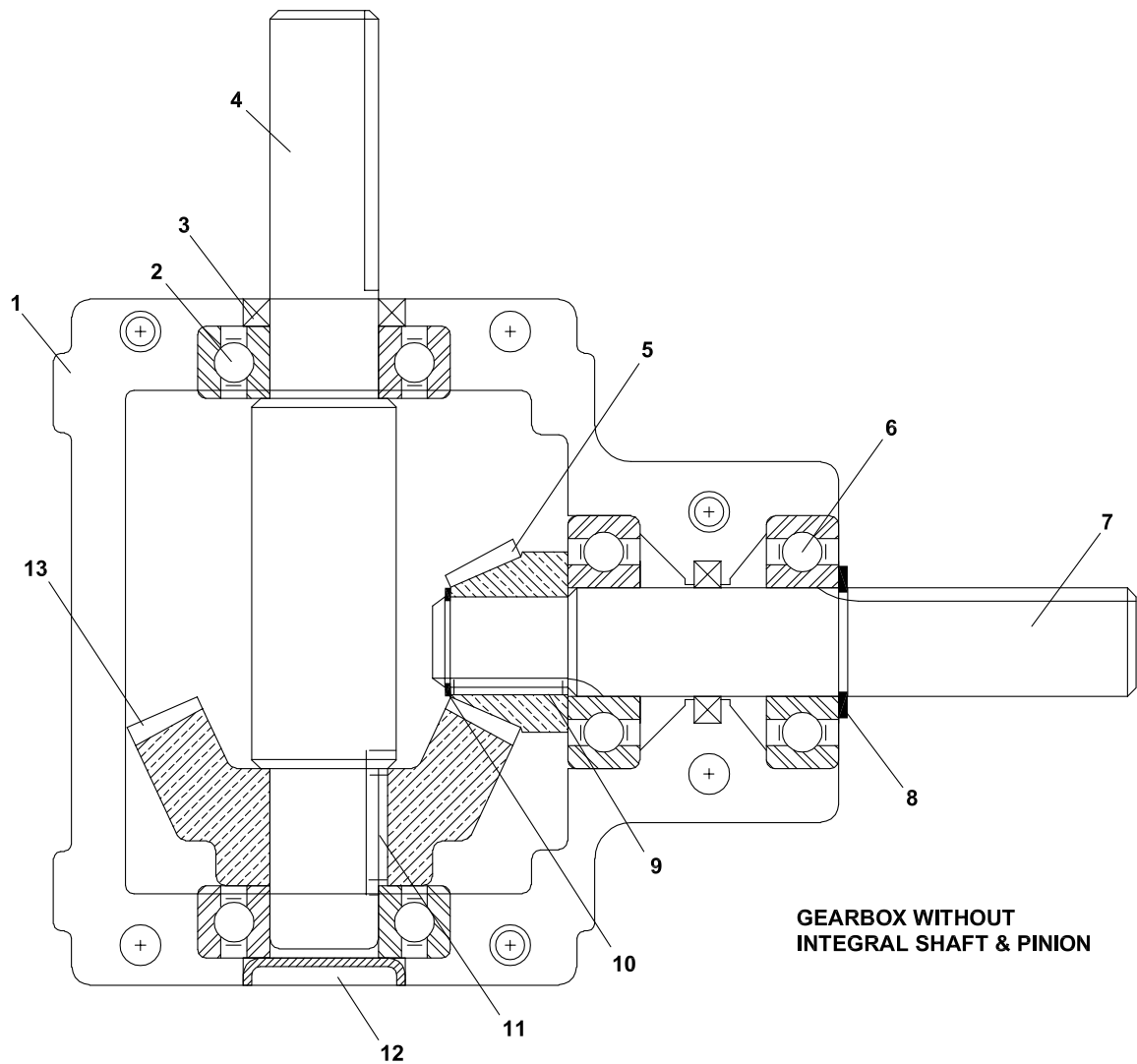
TREE FARM MOWER

REAR WHEEL SHIELDS

FIGURE 4

ITEM	PART NO.	DESCRIPTION	QTY	ITEM	PART NO.	DESCRIPTION	QTY
4-1	64139-04	BOLT-WLF 1/4-20X3/4	12				
4-2	64141-2	NUT-WLF 1/4-20	12				
4-3	60-529.7	SHIELD-LEFT REAR WHEEL	1				
4-4	64-643.7	SHIELD BRACKET-LFT R	1				
4-5	53-073	WHEEL ASSEMBLY	4				
	(OPTIONAL)						
	53-090	TIRE ONLY-20 X 8.00-10	1				
	53-085	RIM ONLY	1				
4-6	64-644.7	SHIELD BRACKET-RT REAR	1				
4-7	60-528.7	SHIELD-RT REAR WHEEL	1				

FIGURE 5



TREE FARM MOWER

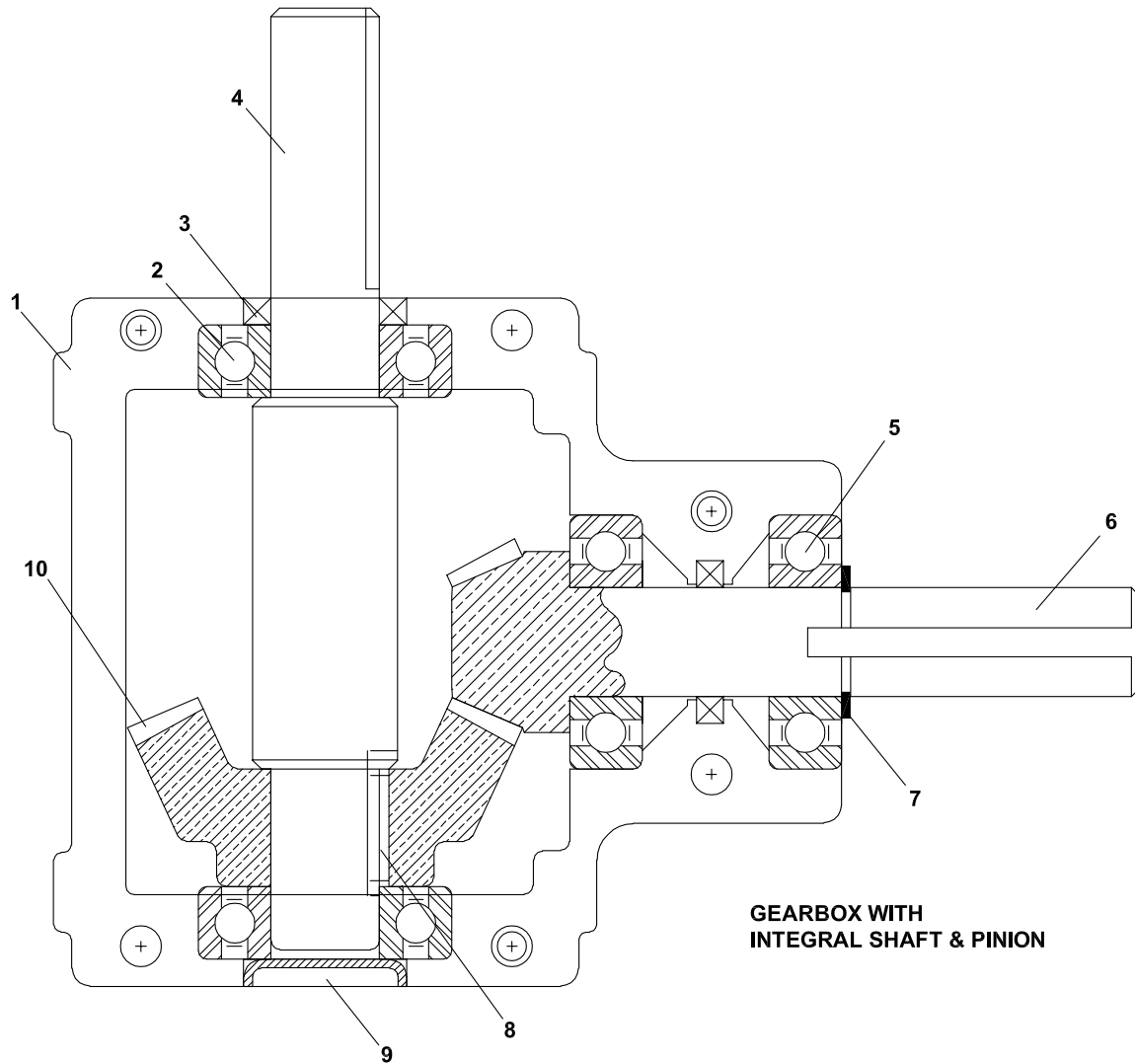
GEARBOX (A)

FIGURE 5

ITEM	PART NO.	DESCRIPTION	QTY	ITEM	PART NO.	DESCRIPTION	QTY
FOR SERIAL NUMBER 1001 - 1055							
5-1	87-CM002824	HOUSING HALF (ORDER WITH 87-CM001453)	1				
	87-CM001453	HOUSING HALF (ORDER WITH 87-CM002824)	1				
5-2	87-CM153411	BALL BEARING	3				
5-3	87-CM301432	SEAL	2				
5-4	87-CM210484	SHAFT	1				
5-5	87-CM102111	GEAR	1				
5-6	87-CM151282	BALL BEARING	1				
5-7	87-CM210559	SHAFT	1				
5-8	87-CM620054	RETAINING RING	1				
5-9	87-CM600668	KEY	1				
5-10	87-CM620351	RETAINING RING	1				
5-11	87-CM600106	KEY	1				
5-12	87-CM640045	EXPANSION PLUG	1				
5-13	87-CM102129	GEAR	1				
*	87-CM411173	CAP SCREW	6				
*	87-CM410324	LOCKWASHER	6				
*	87-CM410001	PIPE PLUG	2				
*	29-076	PIPE PLUG-1/4"	1				
*	87-160	GEARBOX	1				

*NOT ILLUSTRATED

FIGURE 6



TREE FARM MOWER

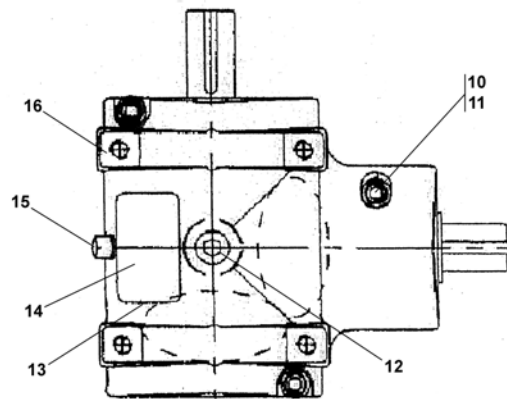
GEARBOX (B)

FIGURE 6

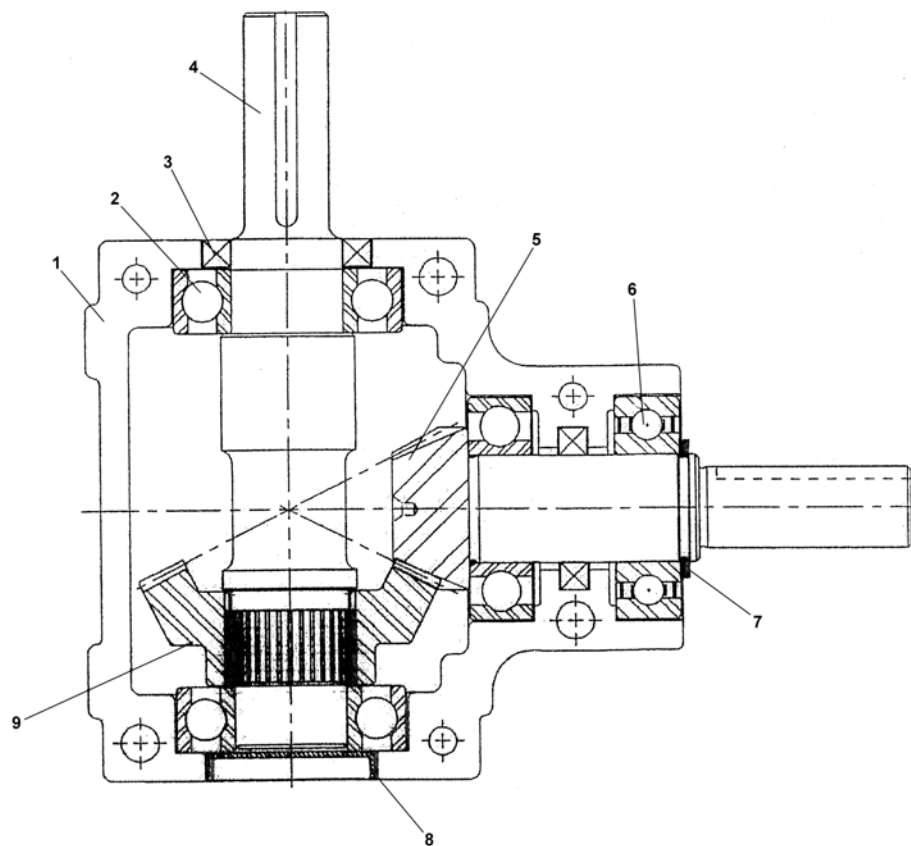
ITEM	PART NO.	DESCRIPTION	QTY	ITEM	PART NO.	DESCRIPTION	QTY
FOR SERIAL NUMBER 1056 - 1102							
6-1	87-CM002824	HOUSING HALF (ORDER WITH 87-CM001453)	1				
	87-CM001453	HOUSING HALF (ORDER WITH 87-CM002824)	1				
6-2	87-CM153411	BALL BEARING	3				
6-3	87-CM301432	SEAL	2				
6-4	87-CM210484	SHAFT	1				
6-5	87-CM151282	BALL BEARING	1				
6-6	87-CM107201	SHAFT & PINION	1				
6-7	87-CM620054	RETAINING RING	1				
6-8	87-CM600106	KEY	1				
6-9	87-CM640045	EXPANSION PLUG	1				
6-10	87-CM107169	GEAR	1				
*	87-CM411173	CAP SCREW	6				
*	87-CM410324	LOCKWASHER	6				
*	87-CM410001	PIPE PLUG	2				
*	29-076	PIPE PLUG-1/4"	1				
*	87-160	GEARBOX	1				

***NOT ILLUSTRATED**

FIGURE 7



NOT ILLUSTRATED - 17



TREE FARM MOWER

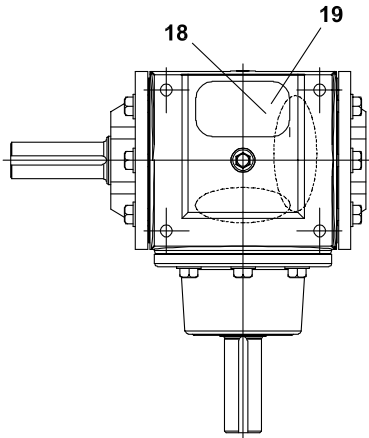
GEARBOX (C)

FIGURE 7

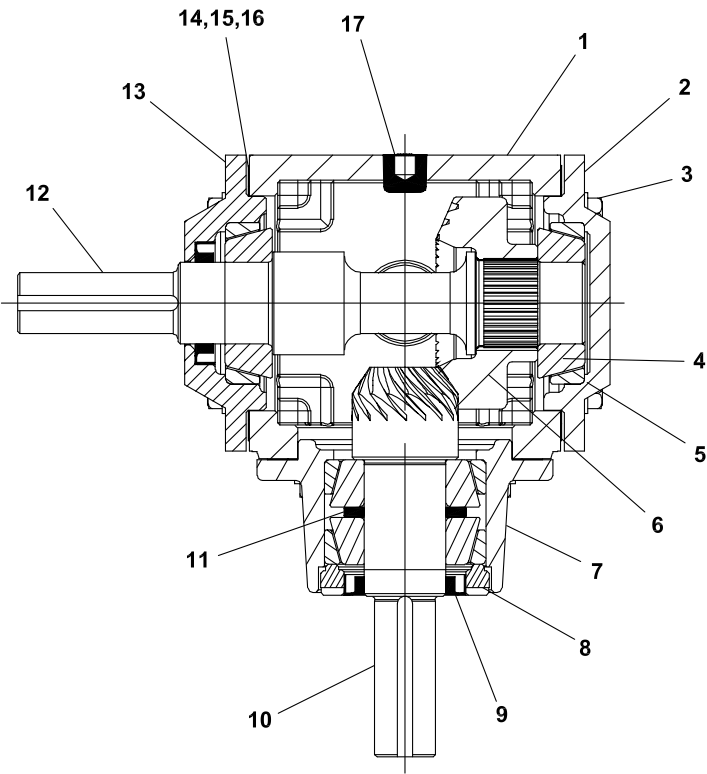
ITEM	PART NO.	DESCRIPTION	QTY	ITEM	PART NO.	DESCRIPTION	QTY
FOR SERIAL NUMBER 1103 - 1120							
	87-209	GEARBOX					
7-1	87-CM003582	HOUSING HALF	1				
7-2	87-CM143437	BALL BEARING	3				
7-3	87-CM301374	SEAL	2				
7-4	87-CM226423	THRU SHAFT	1				
7-5	87-CM108068	SHAFT & PINION (LFT)	1				
7-6	87-CM143429	BALL BEARING	1				
7-7	87-CM620013	RETAINING RING	1				
7-8	87-CM640110	EXPANSION PLUG	1				
7-9	87-CM108514	GEAR-(RIGHT HAND)	1				
7-10	87-CM412320	CAP SCREW	6				
7-11	87-CM410506	LOCKWASHER	6				
7-12	87-CM410001	PIPE PLUG-SOLID	2				
7-13	87-CM800573	I.D. TAG	1				
7-14	87-CM802876	I.D. TAG COVER	1				
7-15	87-CM410068	PIPE PLUG-SOLID	1				
7-16	87-CM003756	HOUSING HALF	1				
7-17 *	87-CM800326	GEAR LUBE (OZ.)	5				

***NOT ILLUSTRATED**

FIGURE 8



Not Illustrated 20



TREE FARM MOWER

GEARBOX (D)

FIGURE 8

ITEM	PART NO.	DESCRIPTION	QTY	ITEM	PART NO.	DESCRIPTION	QTY
FOR SERIAL NUMBER 1120 -							
	87-239	GEARBOX					
8-1	87-CM003913	HOUSING	1				
8-2	87-CM056077	BLANK CAP	1				
8-3	87-CM414516	WHIZLOCK CAPSCREWS	18				
8-4	87-CM150094	BEARING CONE	4				
8-5	87-CM150102	BEARING CUP	4				
8-6	87-CM110064	GEAR (RH)	1				
8-7	87-CM056655	HUB	1				
8-8	87-CM056648	CAP	1				
8-9	87-CM300004	SEAL	2				
8-10	87-CM109967	INTEGRAL PIN (LH)	1				
8-11	87-CM410571	SPACER	1				
8-12	87-CM229427	THRU SHAFT	1				
8-13	87-CM056069	THRU CAP	1				
8-14	87-CM392993	GASKET-.015	A/R				
8-15	87-CM393009	GASKET-.005	A/R				
8-16	87-CM393017	GASKET-.003	A/R				
8-17	87-CM410001	PIPE PLUG-SOLID	3				
8-18	87-CM802876	I.D. TAG COVER	1				
8-19	87-CM800573	I.D. TAG	1				
8-20 *	87-CM800326	GEAR LUBE-(OZ.)	5				

***NOT ILLUSTRATED**

World Class Quality, Performance And Support



Equipment from Jacobsen, a Textron company, is built to exacting standards ensured by ISO 9001 and ISO 14001 registration at all our manufacturing locations.

A worldwide dealer network and factory-trained technicians backed by Textron Parts Xpress provide reliable, high-quality product support.



BOB-CAT BROUWER BUNTON CUSHMAN RYAN STEINER