



OWNER/OPERATOR'S MANUAL & ILLUSTRATED PARTS LIST

MODEL:

73-70680 TERRA RAKE RK260



WARNING: If incorrectly used this machine can cause severe injury. Those who use and maintain this machine should be trained in its proper use, warned of its dangers and should read the entire manual before attempting to set up, operate, adjust or service the machine.



09-284 REV A

CALIFORNIA
Proposition 65 Warning

Diesel engine exhaust and some of its constituents are known to the State of California to cause cancer, birth defects and other reproductive harm.



WARNING

The engine exhaust from this product contains chemicals known to the State of California to cause cancer, birth defects or other reproductive harm.

Californie Proposition 65
Avertissement

Les échappements des moteurs diesel et certains de leurs composés sont reconnus par l'Etat de Californie pour être cancérigènes, provoquer des défauts congénitaux et d'autres dangers en matière de reproduction.



AVERTISSEMENT

L'émission du moteur de ce matériel contient des produits chimiques que l'Etat de Californie considère être cancérigènes, provoquer des défauts congénitaux et d'autres dangers en matière de reproduction.

California Advertencia
de la Proposicion 65

El estado de California hace saber que los gases de escape de los motores diesel y algunos de sus componentes producen cáncer, defectos de nacimiento y otros daños en el proceso de reproducción humana.



ADVERTENCIA

El estado de California hace saber que los gases de escape de este producto contienen productos químicos que producen cáncer, defectos de nacimiento y otros daños en el proceso de reproducción humana.

IMPORTANT MESSAGE

Thank you for purchasing this Jacobsen product. You have purchased a world class product, one of the best designed and built anywhere.

This product comes with an Owner/Operator's Manual. The useful life and good service you receive from this product depends to a large extent on how well you read and understand this manual. Treat this product properly and adjust it as instructed, and it will give you many years of reliable service.

See a Jacobsen dealer for any service or parts needed. Jacobsen service ensures that you continue to receive the best results possible from Jacobsen products. You can trust Jacobsen replacement parts because they are manufactured with the same high precision and quality as the original parts.

Jacobsen designs and builds its equipment to serve many years in a safe and productive manner. For longest life, use this product only as directed in the manual, keep it in good repair and follow safety warnings and instructions. You'll always be glad you did.

Jacobsen, a Textron Company
One Bob Cat Lane
Johnson Creek, WI 53038-0469

TABLE OF CONTENTS	FIGURES	PAGE
INTRODUCTION / SPECIFICATIONS		2
SAFETY		3, 4
ASSEMBLY INSTRUCTIONS		5
INSTALLATION / FEATURES		6
OPERATION		7
SERVICE		8
PARTS SECTION		9
HITCH PARTS	FIGURE 1	10, 11
RAKE PARTS	FIGURE 2	12, 13
CASTER WHEELS	FIGURE 3	14, 15

DESCRIPTION

The RK260 Terra Rake attaches to the Steiner power units' front quick hitch in a minute or less. Power angle and adjustable casters allow fine tuning for spreading topsoil, crushed stone, gravel or cinders.

Landscape operations include:

- Removing stones, roots and debris prior to seeding.
- Grading and leveling athletic fields, beaches, parking lots, drives and trails.
- Grooming cinder tracks, bridle paths, parks and playgrounds.

SPECIFICATIONS

Overall Length with wheels front	67"
Overall Length with wheels rear	49"
Overall Width	67"
Maximum Working Width	66"
Minimum Working Width (angled)	61"
Working Positions	Hydraulically controlled
Self-leveling Device	Spring-loaded
Number of Teeth	38
Size of Teeth	5/16 X 1 X 27
Space between Teeth	3/4"
Caster Gauge Wheel Height Adjustment	2" in 1/2" increments
Tire Size	13 X 5.00 - 6
Ground Clearance	5" on Model 420 / 430
Weight	270 lbs.

NOTICE !!!

Unauthorized modifications may present **extreme** safety hazards to operators and bystanders and could also result in product damage.

Jacobsen, a Textron Company strongly warns against, rejects and disclaims any modifications, add-on accessories or product alterations that are not designed, developed, tested and approved by Jacobsen Engineering Department. Any Jacobsen product that is altered, modified or changed in any manner not specifically authorized after original manufacture—including the addition of “after-market” accessories or component parts not specifically approved by Jacobsen—will result in the Jacobsen Warranty being voided.

Any and all liability for personal injury and/or property damage caused by any unauthorized modifications, add-on accessories or products not approved by Jacobsen will be considered the responsibility of the individual(s) or company designing and/or making such changes. Jacobsen will vigorously pursue full indemnification and costs from any party responsible for such unauthorized post-manufacture modifications and/or accessories should personal injury and/or property damage result.



This symbol means:
ATTENTION!
BECOME ALERT!

Your safety and the safety of others is involved.

Signal word definitions:

The signal words below are used to identify levels of hazard seriousness. These words appear in this manual and on the safety labels attached to Jacobsen machines. For your safety and the safety of others, read and follow the information given with these signal words and/or the symbol shown above.

DANGER

DANGER indicates an imminently hazardous situation which, if not avoided, **WILL** result in death or serious injury.

WARNING

WARNING indicates a potentially hazardous situation which, if not avoided, **COULD** result in death or serious injury.

CAUTION

CAUTION indicates a potentially hazardous situation which, if not avoided, **MAY** result in minor or moderate injury. It may also be used to alert against unsafe practices or property damage.

CAUTION

CAUTION used without the safety alert symbol indicates a potentially hazardous situation which, if not avoided, **MAY** result in property damage



MODEL NUMBER: This number appears on sales literature, technical manuals and price lists.

SERIAL NUMBER: This number appears only on your mower. It contains the model number followed consecutively by the serial number. Use this number when ordering parts or seeking warranty information.

GENERAL SAFETY

1. Read and understand the Owner's Manual before attempting to operate this machine.
2. Operate all controls from the operator's seat. **NO RIDERS.**
3. Keep all shields in place and safety switches adjusted properly.
4. Do not leave equipment unattended. STOP the engine and remove the key.
5. Do not allow minors or the inexperienced to operate this machine.
6. Keep people and pets a safe distance away from machine using power driven attachments. Injury could result from flying debris.

OPERATING SAFETY

1. **DO NOT** attempt to work on power unit or any attachments with the engine running. **STOP ENGINE!**
3. Before leaving the tractor seat:
 - **Lower Rake.**
 - **Set PARKING brake.**
 - **Stop engine.**

ASSEMBLY

1. Remove rake and attaching parts from shipping crate.
2. See Page 12 and 14, Figures 1 & 2 for parts identification and location. Attach the hitch to the rake frame with 1 X 3-1/2 bolt and nylon locknut as shown on Page 8, Photo 5.
3. Attach the top link to the rake frame with a 5/8 X 6 bolt, long spacer, lockwasher and nut.
4. Attach the rod end of the cylinder to the rake frame with a 5/8 X 2-1/2 bolt, lockwasher and nut.
5. Attach the rake to the tractor.
6. Leveling adjustment:
 - A. Place tractor with rake installed on a level floor.
 - B. Place the rake in straight position.
 - C. With caster wheels in the rear position, add or remove spacers until the rake and wheels will contact the floor. Typical setting is one spacer at the bottom and the remaining 3 spacers at the top.
 - D. Angle rake to the extreme right position. Adjust top link to obtain equal rake surface contact in this position. Angle to the extreme left position and check again. The ideal setting is to have the rake touch the floor equally in all positions. This is the setting you would likely use for spreading topsoil or gravel.
 - E. For more or less working depth, minor adjustment of the top link may be needed.
7. Check and tighten all bolts. Grease the center pivot ball and caster wheels.

INSTALLATION

1. Attach Terra Rake to the “quick hitch” front lift in the usual manner.
2. Connect the hoses to the auxiliary quick couplers.

NOTE: To reverse the auxiliary hydraulic lever action, switch the hoses at the quick couplers.

FEATURES

1. Self leveling independent of tractor.
2. Front mounted excellent visibility.
3. Gauge wheels front or rear position.
4. Power angle straight or angle right and left.
5. Top link provide fine depth adjustment.



Spring loaded (factory set) for self leveling... independent of tractor angle.

1. The power angle allows the operator many choices of rake position. The rake may be power angled straight ahead, to the right or left , or any position in between.
2. Gauge wheels are adjustable by moving 1/2" spacers to obtain correct working depth for various surface conditions. The wheels may be mounted to the front or to the rear as the task requires.
3. After making the initial setting for the working depth by moving the spacers, fine tune the setting by adjusting the top link. This is important when using the rake to spread topsoil and/or gravel.
4. Operate only with front lift in the "FLOAT" position. Do not use down pressure.
5. Always rake in forward direction. Raise the rake when backing.
6. Use the Model BD260 power angle blade where large amounts of material need to be leveled. Remove large rocks before raking. Do not use this Terra Rake as a bulldozer. It is designed for light duty soil finishing and conditioning.

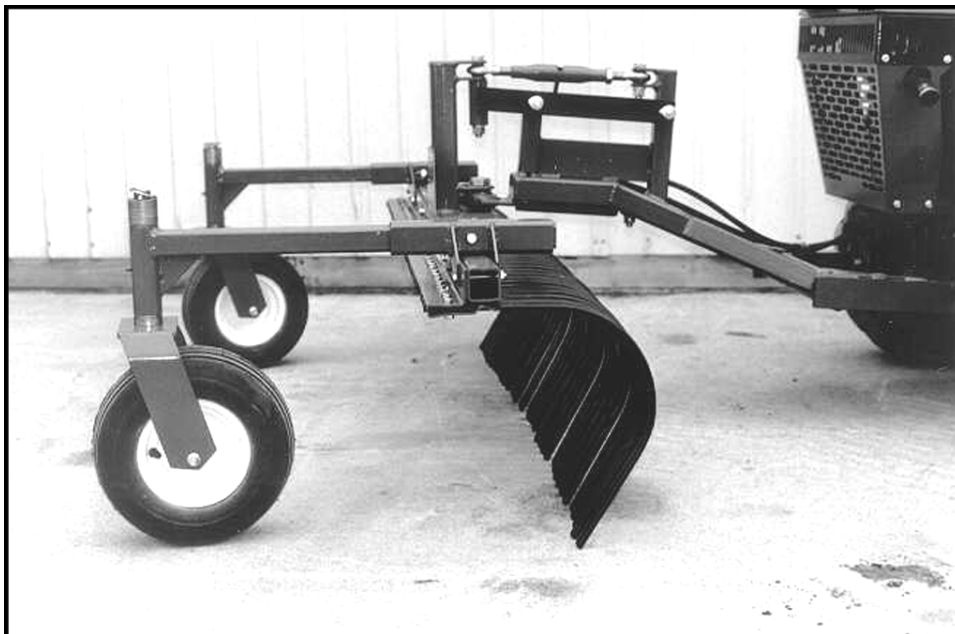
⚠ CAUTION

Operate only with front lift in the "FLOAT" position.

Always rake in forward direction.

Lift rake before backing.

Serious damage (breaking or bending) of the tines may occur.



1. Check tines periodically for bent or misaligned tines. Straighten or replace if necessary.
2. Check tire pressures every 100 hours. Adjust to 16 lbs. maximum.
3. Grease pivot ball every 100 hours.
4. Keep it clean!



Top Link...provides fine tuning for depth adjustment

**TERRA
RAKE**

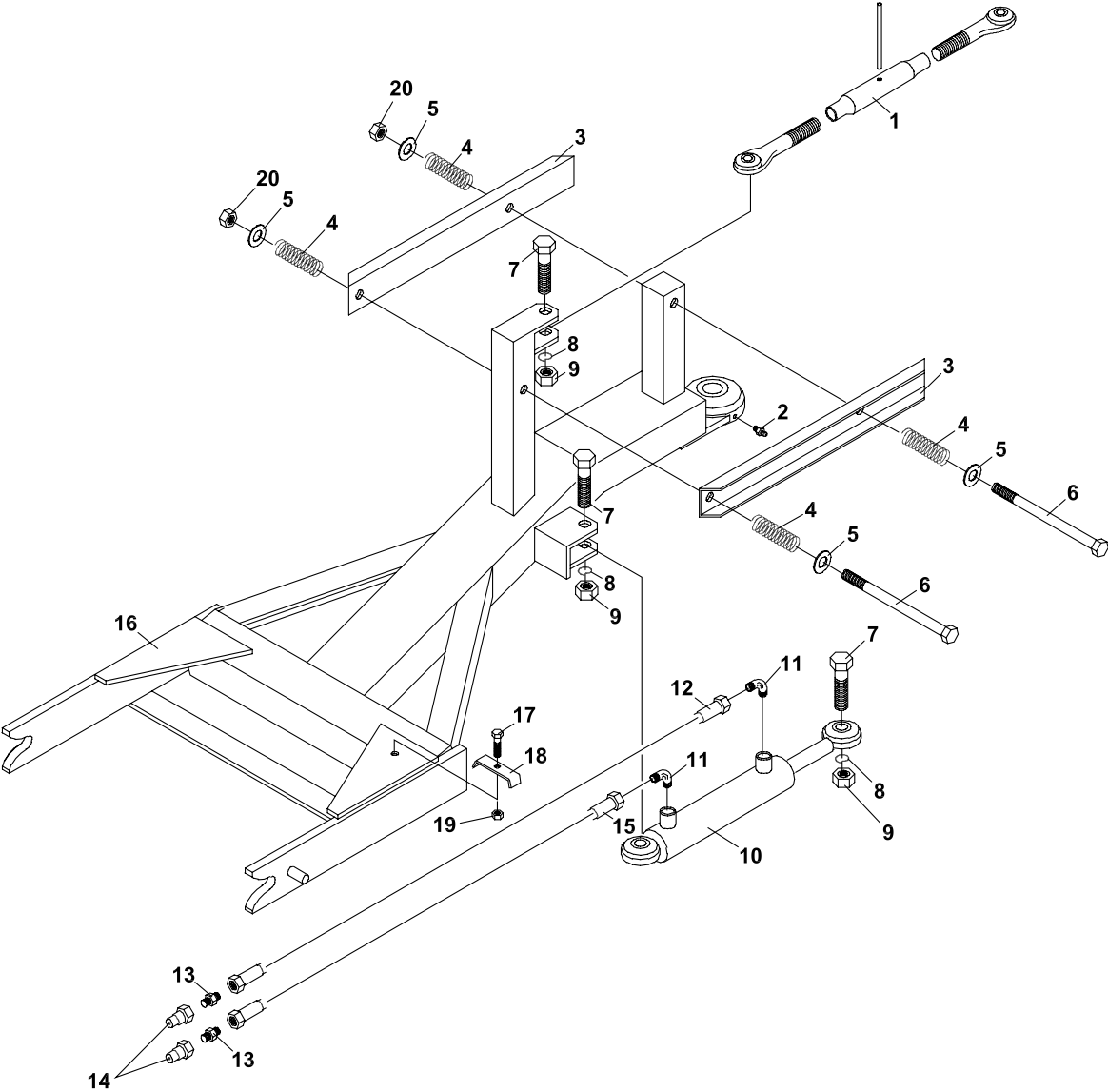
PARTS SECTION

PARTS SECTION

HITCH PARTS

TERRA
RAKE

FIGURE 1



TERRA RAKE

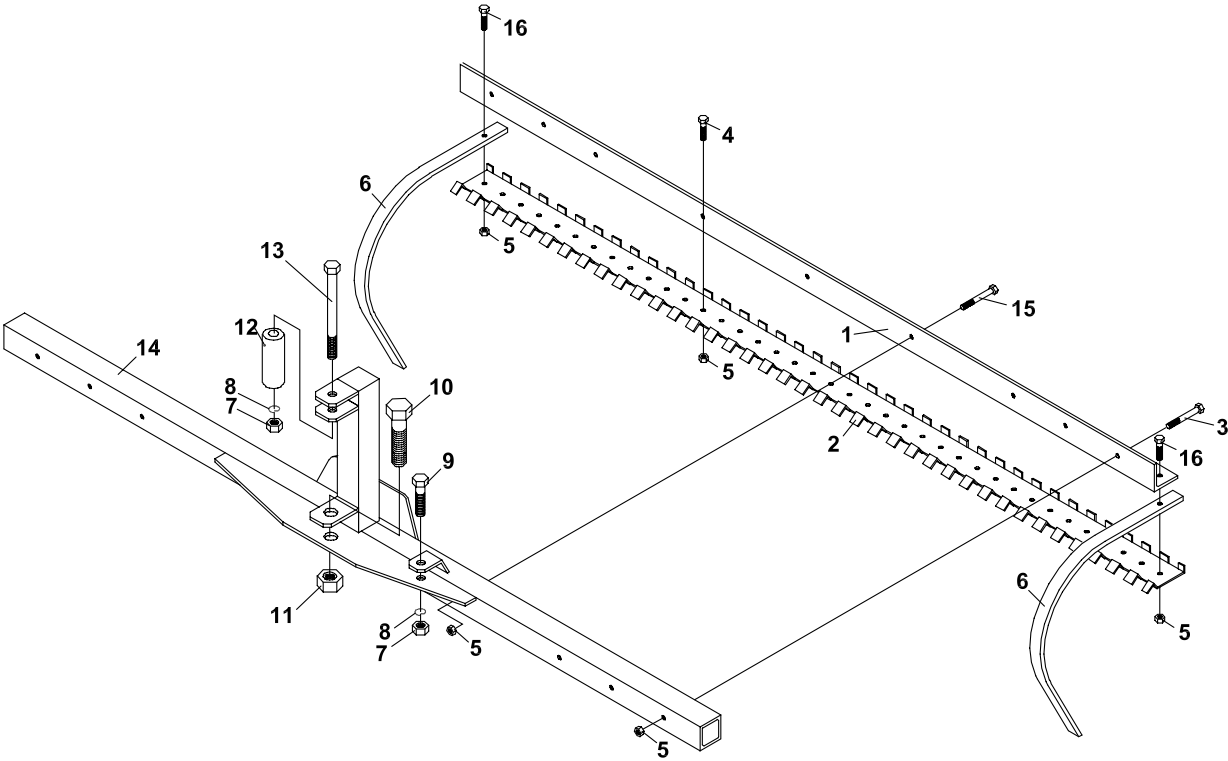
HITCH PARTS

FIGURE 1

ITEM	PART NO.	DESCRIPTION	QTY	ITEM	PART NO.	DESCRIPTION	QTY
1-1	47-009	TOP LINK	1				
1-2	29-010	S/B GREASE FITTING	1				
1-3	64-759.7	CHANNEL-SPRING TENSION	2				
1-4	41-034	SPRING,COMP 0.968 X 2.0	4				
1-5	64163-67	WASHER-.516X1X12GA	4				
1-6	90-0848	BOLT,1/2-13 X 6	2				
1-7	90-1020	BOLT,5/8-11 X 2-1/2	3				
1-8	64006-04	LOCKWSHR-HELICAL 5/8	3				
1-9	64025-21	NUT-HEX 5/8-11	3				
1-10	23-053	STEERING CYLINDER	1				
1-11	25-2103-4-6	90-M/M 9/16 JIC x 1/8	2				
1-12	20-047	HOSE, 1/4 X 58	1				
1-13	25-0103-4-6	FTG-9/16 JIC x 1/4	2				
1-14	23-004	MALE QUICK COUPLER	2				
1-15	20-021	HOSE-1/4 X 52	1				
1-16	64-762.7	FRAME, RAKE HITCH	1				
1-17	64123-80	BLT-HEX 1/4-20X1-1/4	1				
1-18	64-635.7	CLAMP, HOSE RETAINER	1				
1-19	64229-01	LOCKNUT-NYLON 1/4-20	1				
1-20	64229-05	LOCKNUT, 1/2-13 NYLON	2				
*	4128372	LABEL-STEINER	1				
*	4124072	LABEL-JACOBSEN	1				

* NOT ILLUSTRATED

FIGURE 2



TERRA RAKE

RAKE PARTS

FIGURE 2

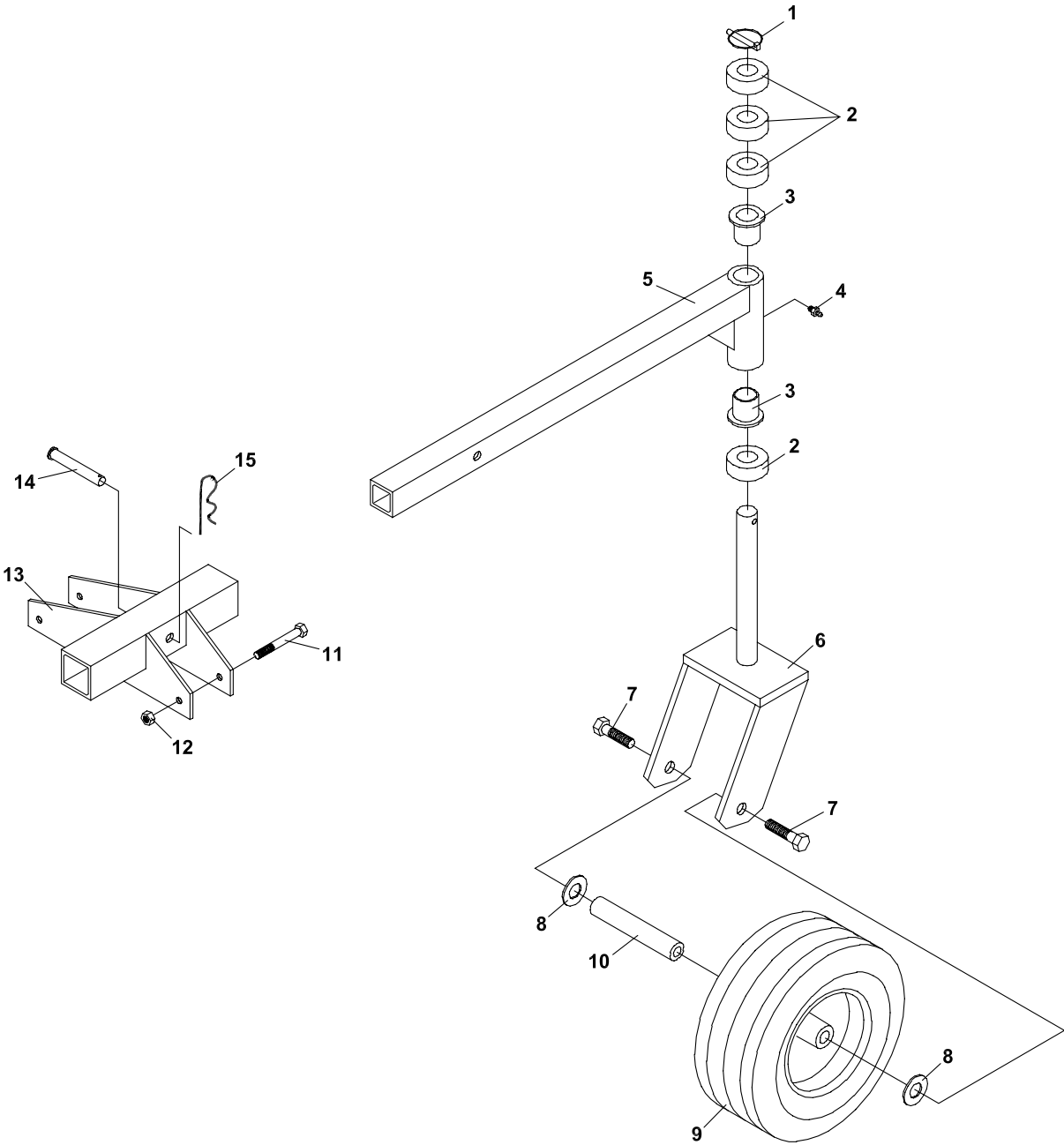
ITEM	PART NO.	DESCRIPTION	QTY	ITEM	PART NO.	DESCRIPTION	QTY
2-1	62-772.7	MOUNT-RAKE TINES RK260	1				
2-2	62-773.7	HOLDER-RAKE TINES RK260	1				
2-3	64123-75	BOLT-3/8-16X3 HEX	6				
2-4	64139-24	BOLT-3/8-16X1	36				
2-5	64141-4	NUT-WLF 3/8-16	47				
2-6	79-072	TINE, TERRA-RAKE 5/16 x 1	38				
2-7	64025-21	NUT-HEX 5/8-11	2				
2-8	64006-04	LOCKWSHR-HELICAL 5/8	2				
2-9	90-1020	BOLT-5/8-11 X 2-1/2	1				
2-10	91-1628	BOLT-1 X 3-1/2	1				
2-11	99-E04	LOCKNUT	1				
2-12	64-758	SPACER, SPRING TENSION	1				
2-13	90-1048	BOLT-5/8-11 X 6	1				
2-14	64-761.7	FRAME, RAKE TINE MOUNT	1				
2-15	64123-88	BOLT-3/8-16X2-3/4	3				
2-16	64139-18	BOLT-3/8-16 X 1-1/4	2				
*	00-158	DECAL-TERRA-RAKE MODEL	1				

* NOT ILLUSTRATED

CASTER WHEELS

TERRA
RAKE

FIGURE 3



TERRA RAKE

CASTER WHEELS

FIGURE 3

ITEM	PART NO.	DESCRIPTION	QTY	ITEM	PART NO.	DESCRIPTION	QTY
3-1	03-017	CLIP, 5/16"	2				
3-2	64163-22	SPACER-CSTR HEIGHT ADJ	8				
3-3	85-B34	BUSHING, FLANGED	4				
3-4	29-010	S/B GREASE FITTING	2				
3-5	62-771.7	FRAME, CASTER SWIVEL	2				
3-6	50-082.7	FRAME-CASTER YOKE	2				
3-7	64139-21	BLT-WLF 3/8-16X3/4	4				
3-8	64163-06	WASHER-3/4 ID 18	4				
3-9	53-093	WHEEL,W/13X500X6	2				
3-10	50-063	AXLE, CASTER WHEEL	2				
3-11	64123-75	BOLT, 3/8-16X3 HEX	6				
3-12	64141-4	NUT-WLF 3/8-16	6				
3-13	64-760.7	FRAME, WHEEL SUPPORT	2				
3-14	03-0820	CLEVIS PIN, 1/2 X 2-1/2	2				
3-15	02-PP0313	PIN, 3/16 x 1.5/8	2				

World Class Quality, Performance And Support



Equipment from Jacobsen, a Textron company, is built to exacting standards ensured by ISO 9001 and ISO 14001 registration at all our manufacturing locations.

A worldwide dealer network and factory-trained technicians backed by Textron Parts Xpress provide reliable, high-quality product support.



BOB-CAT BROUWER BUNTON CUSHMAN RYAN STEINER