



OWNER/OPERATOR'S MANUAL & ILLUSTRATED PARTS LIST

MODEL:

73-70694 DISC EDGER DE160



WARNING: If incorrectly used this machine can cause severe injury. Those who use and maintain this machine should be trained in its proper use, warned of its dangers and should read the entire manual before attempting to set up, operate, adjust or service the machine.



09-162A REV A

CALIFORNIA
Proposition 65 Warning

Diesel engine exhaust and some of its constituents are known to the State of California to cause cancer, birth defects and other reproductive harm.



WARNING

The engine exhaust from this product contains chemicals known to the State of California to cause cancer, birth defects or other reproductive harm.

Californie Proposition 65
Avertissement

Les échappements des moteurs diesel et certains de leurs composés sont reconnus par l'Etat de Californie pour être cancérigènes, provoquer des défauts congénitaux et d'autres dangers en matière de reproduction.



AVERTISSEMENT

L'émission du moteur de ce matériel contient des produits chimiques que l'Etat de Californie considère être cancérigènes, provoquer des défauts congénitaux et d'autres dangers en matière de reproduction.

California Advertencia
de la Proposicion 65

El estado de California hace saber que los gases de escape de los motores diesel y algunos de sus componentes producen cáncer, defectos de nacimiento y otros daños en el proceso de reproducción humana.



ADVERTENCIA

El estado de California hace saber que los gases de escape de este producto contienen productos químicos que producen cáncer, defectos de nacimiento y otros daños en el proceso de reproducción humana.

IMPORTANT MESSAGE

Thank you for purchasing this Jacobsen product. You have purchased a world class product, one of the best designed and built anywhere.

This product comes with an Owner/Operator's Manual. The useful life and good service you receive from this product depends to a large extent on how well you read and understand this manual. Treat this product properly and adjust it as instructed, and it will give you many years of reliable service.

See a Jacobsen dealer for any service or parts needed. Jacobsen service ensures that you continue to receive the best results possible from Jacobsen products. You can trust Jacobsen replacement parts because they are manufactured with the same high precision and quality as the original parts.

Jacobsen designs and builds its equipment to serve many years in a safe and productive manner. For longest life, use this product only as directed in the manual, keep it in good repair and follow safety warnings and instructions. You'll always be glad you did.

Jacobsen, a Textron Company
One Bob Cat Lane
Johnson Creek, WI 53038-0469

TABLE OF CONTENTS	FIGURES	PAGE
DESCRIPTION / SPECIFICATIONS		2
SAFETY		3, 4
INSTALLATION / SERVICE		5
OPERATION		6, 7
MAIN FRAME ASSEMBLY	FIGURE 1	8, 9

DESCRIPTION

Use the Disc Edger to tidy-up those unsightly edges of paths and curbsides quickly and efficiently. Hydraulically raised or lowered, the Disc Edger incorporates a 16 inch concave disc which can be adjusted for angle. A pneumatic tired wheel provides height control.



SPECIFICATIONS

Weight.....	110 lbs.
Overall Width:	
Fully closed without disc guard	50"
Fully closed with disc guard.....	55"
Fully extended with disc guard	65"
Cutting width from center of tractor:	
Closed position	25-1/2"
Extended position	35-1/2"
Disc	16" hardened, concave type
Operation	Right or Left Hand
Ground clearance in raised position	9"

NOTICE !!!

Unauthorized modifications may present **extreme** safety hazards to operators and bystanders and could also result in product damage.

Jacobsen, a Textron Company strongly warns against, rejects and disclaims any modifications, add-on accessories or product alterations that are not designed, developed, tested and approved by Jacobsen Engineering Department. Any Jacobsen product that is altered, modified or changed in any manner not specifically authorized after original manufacture—including the addition of “after-market” accessories or component parts not specifically approved by Jacobsen—will result in the Jacobsen Warranty being voided.

Any and all liability for personal injury and/or property damage caused by any unauthorized modifications, add-on accessories or products not approved by Jacobsen will be considered the responsibility of the individual(s) or company designing and/or making such changes. Jacobsen will vigorously pursue full indemnification and costs from any party responsible for such unauthorized post-manufacture modifications and/or accessories should personal injury and/or property damage result.



This symbol means:
ATTENTION!
BECOME ALERT!

Your safety and the safety of others is involved.

Signal word definitions:

The signal words below are used to identify levels of hazard seriousness. These words appear in this manual and on the safety labels attached to Jacobsen machines. For your safety and the safety of others, read and follow the information given with these signal words and/or the symbol shown above.

DANGER

DANGER indicates an imminently hazardous situation which, if not avoided, **WILL** result in death or serious injury.

WARNING

WARNING indicates a potentially hazardous situation which, if not avoided, **COULD** result in death or serious injury.

CAUTION

CAUTION indicates a potentially hazardous situation which, if not avoided, **MAY** result in minor or moderate injury. It may also be used to alert against unsafe practices or property damage.

CAUTION

CAUTION used without the safety alert symbol indicates a potentially hazardous situation which, if not avoided, **MAY** result in property damage

TEXTRON

GOLF, TURF & SPECIALTY PRODUCTS

MODEL NUMBER

SERIAL NUMBER

JOHNSON CREEK, WI MADE IN U.S.A

MODEL NUMBER: This number appears on sales literature, technical manuals and price lists.

SERIAL NUMBER: This number appears only on your mower. It contains the model number followed consecutively by the serial number. Use this number when ordering parts or seeking warranty information.

GENERAL SAFETY

1. Read and understand the Owner's Manual before attempting to operate this machine.
2. Operate all controls from the operator's seat. **NO RIDERS.**
3. Keep all shields in place and safety switches adjusted properly.
4. Do not leave equipment unattended. STOP the engine and remove the key.
5. Do not allow minors or the inexperienced to operate this machine.
6. Keep people and pets a safe distance away from machine using power driven attachments. Injury could result from flying debris.

OPERATING SAFETY

CAUTION

1. **DO NOT** attempt to work on unit or any attachments with the engine running. **STOP ENGINE!**
2. **Before leaving the tractor seat:**
 - **Set Parking Brake.**
 - **Stop Engine.**

**Use caution when turning or edging on slopes.
The turning ability is reduced while edging.
Raise the edger for short turns.**

INSTALLATION INSTRUCTIONS FOR DISC EDGER

1. Attach to 4-wheel drive tractor only. This edger will not work with any other style tractor.
2. Attach to front lift in the usual manner.

SERVICE

Daily:

- Check for signs of loose bolts and tighten as needed.
- Keep all shields in place.

25 Hour:

- Grease disc bearing.
- Check tire pressure (25-30 psi).

OPERATING INSTRUCTIONS

1. Refer to setting diagrams for proper settings for the type of edging required.
2. To set wheel:
There are 2 holes to allow 90 degree rotation for the "FRONT" and "DOWN" settings.
3. To set angle of disc:
Loosen 2 bolts and move in slot to desired setting. Tighten bolts.
4. To set "lead" of forward edge of disc:
Rotate disc tube by removing bolt at tube adaptor and rotate to the next hole.
5. To set disc "OUT":
Remove pin and slide disc tube out to the next hole.
6. To operate edger:
Apply down pressure sufficiently to raise the front wheels of the tractor off the ground. This applies the weight of the tractor to the edger and enables you to steer.
7. **OPERATE WITH CAUTION!**

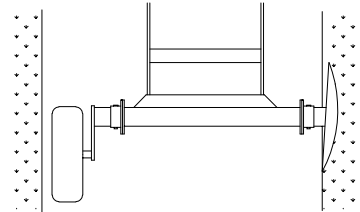
SETTINGS FOR TYPICAL APPLICATIONS

SIDEWALK SETTING

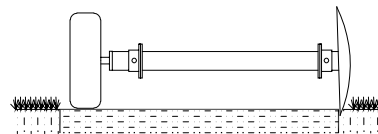
1. Wheel set forward.
2. Disc set in "IN" position.
3. Angle of disc is in slightly at the top.
4. Disc set to lead in slightly at the front.

SIDEWALK SETTING

TOP VIEW

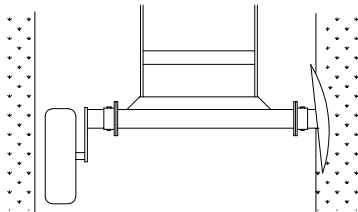


FRONT VIEW

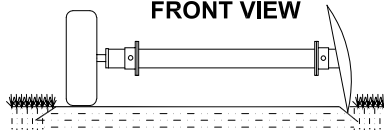


CART PATH SETTING

TOP VIEW



FRONT VIEW



CART PATH (Without formed edges)

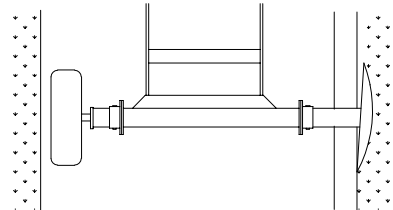
1. Wheel set forward.
2. Disc set in "IN" position.
3. Angle of disc is angled in at the top.

CURB SETTING

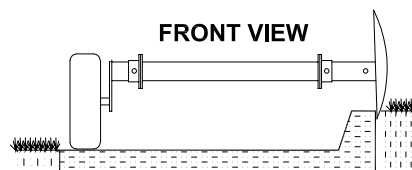
1. Wheel set down.
2. Disc set in "OUT" position.
3. Angle of disc is in slightly at the top or set to match angle of curb on turf side.

CURB SETTING

TOP VIEW



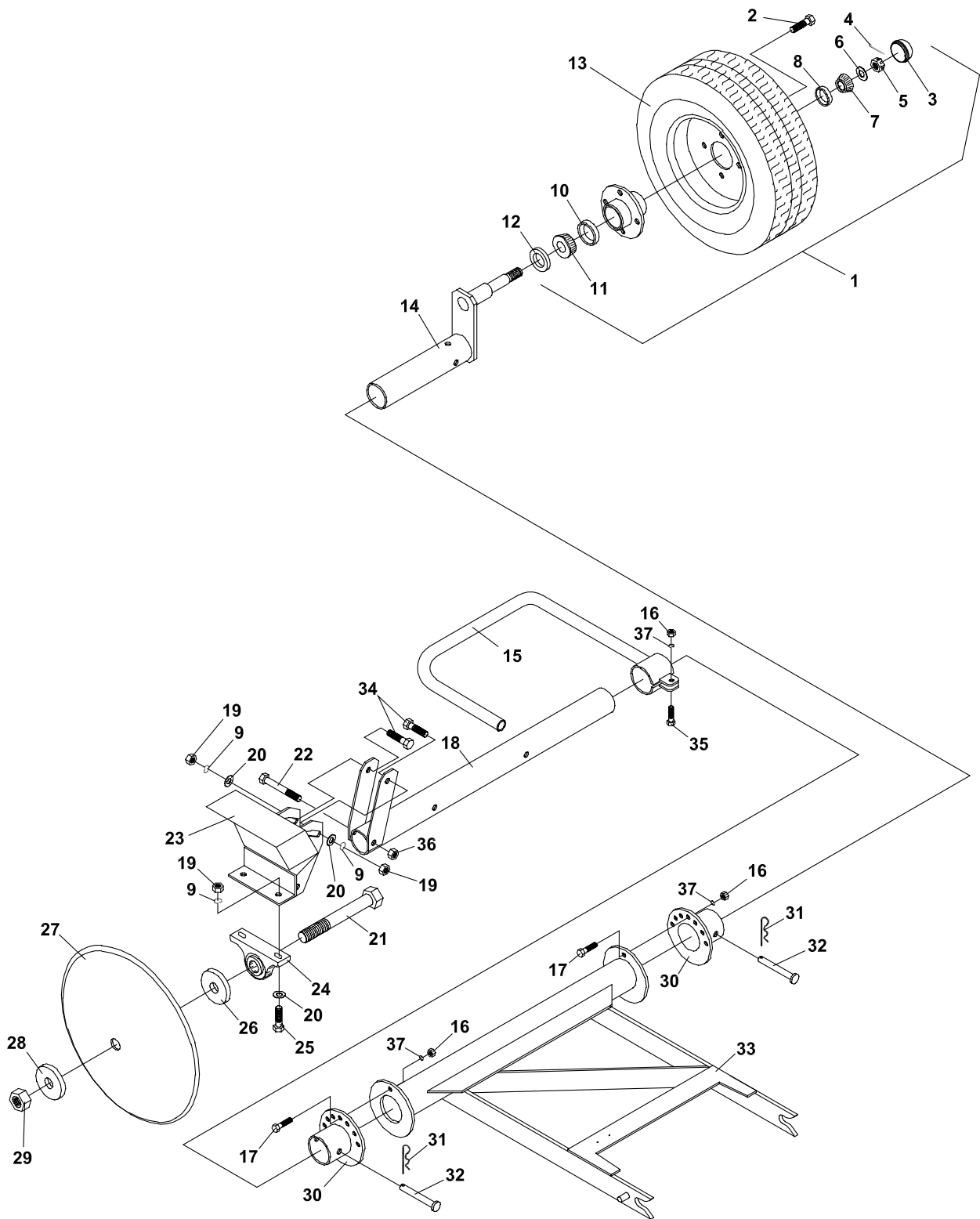
FRONT VIEW



MAIN FRAME ASSEMBLY

DISC EDGER

FIGURE 1



DISC EDGER

MAIN FRAME ASSEMBLY

FIGURE 1

ITEM	PART NO.	DESCRIPTION	QTY	ITEM	PART NO.	DESCRIPTION	QTY
1-1	53-030	HUB, ASSY (INCLUDES ITEMS 3-8 & 10-12)	1				
1-2	99-K05	WHEEL LUG BOLT	4				
1-3	53-042	DUST CAP	1				
1-4	02-CP0410	COTTER PIN, 1/8 X 1-1/4	1				
1-5	99-E08	CASTLE NUT-5/8	1				
1-6	64163-16	WASHER-41/64 X 1, 3/8 X 12	1				
1-7	55-LM11749	BEARING	1				
1-8	55-103	RACE-BEARING	1				
1-9	64006-05	LOCKWSHR-HELICAL 1/2	4				
1-10	55-L44610	RACE-BEARING	1				
1-11	55-L44643	BEARING	1				
1-12	89-018	GREASE SEAL	1				
1-13	53-013	WHEEL & TIRE 4.80 X 8	1				
1-14	62-488.7	WHEEL SPINDLE & TUBE	1				
1-15	62-487.7	PIPE GUARD	1				
1-16	64025-05	NUT-3/8-16 HEX	3				
1-17	64123-50	BOLT-HEX 3/8-16X1	2				
1-18	62-485.7	DISK TUBE	1				
1-19	64025-09	HEX, NUT 1/2-13	4				
1-20	64163-67	WASHER-.516X1X12GA	4				
1-21	91-1632	BOLT, 1-14 X 4	1				
1-22	90-0832	BOLT, 1/2-13 X 4	1				
1-23	62-486.7	SHIELD & DISC SUPPORT	1				
1-24	55-PB90016	BEARING	1				
1-25	90-0814	BOLT, 1/2 UNC x 1.3/4	2				
1-26	99-B23	WASHER, 3/8 X 1" ID X 3" OD	1				
1-27	79-040	DISC, 16" DIA	1				
1-28	86-031	CUP WASHER	1				
1-29	93-16	NUT, 1-14	1				
1-30	64-258.7	TUBE ADAPTER	2				
1-31	02-PP0420	PRESTO PIN, 1/8 X 2-9/16	2				
1-32	03-0828	CLEVIS PIN, 1/2 X 3-1/2	2				
1-33	62-484.7	MAIN FRAME	1				
1-34	64123-39	BOLT-HEX 1/2-13X1-1/4	2				
1-35	64123-70	BOLT-HEX 3/8-16X1-1/2	1				
1-36	64229-05	LOCKNUT, 1/2-13 NYLON	1				
1-37	64006-03	LOCKWASHER, 3/8	3				
*	00-092	DECAL-HANDS & FEET	1				

* NOT ILLUSTRATED

World Class Quality, Performance And Support



Equipment from Jacobsen, a Textron company, is built to exacting standards ensured by ISO 9001 and ISO 14001 registration at all our manufacturing locations.

A worldwide dealer network and factory-trained technicians backed by Textron Parts Xpress provide reliable, high-quality product support.



BOB-CAT BROWER BUNTON CUSHMAN RYAN STEINER