

# OWNER/OPERATOR'S MANUAL & ILLUSTRATED PARTS LIST

---

## MODEL:

**73-70644 TURBINE BLOWER PB200**



*WARNING: If incorrectly used this machine can cause severe injury. Those who use and maintain this machine should be trained in its proper use, warned of its dangers and should read the entire manual before attempting to set up, operate, adjust or service the machine.*



**09-394 REV A**

**CALIFORNIA**  
**Proposition 65 Warning**

Diesel engine exhaust and some of its constituents are known to the State of California to cause cancer, birth defects and other reproductive harm.



**WARNING**

The engine exhaust from this product contains chemicals known to the State of California to cause cancer, birth defects or other reproductive harm.

**Californie Proposition 65**  
**Avertissement**

Les échappements des moteurs diesel et certains de leurs composés sont reconnus par l'Etat de Californie pour être cancérigènes, provoquer des défauts congénitaux et d'autres dangers en matière de reproduction.



**AVERTISSEMENT**

L'émission du moteur de ce matériel contient des produits chimiques que l'Etat de Californie considère être cancérigènes, provoquer des défauts congénitaux et d'autres dangers en matière de reproduction.

**California Advertencia**  
**de la Proposicion 65**

El estado de California hace saber que los gases de escape de los motores diesel y algunos de sus componentes producen cáncer, defectos de nacimiento y otros daños en el proceso de reproducción humana.



**ADVERTENCIA**

El estado de California hace saber que los gases de escape de este producto contienen productos químicos que producen cáncer, defectos de nacimiento y otros daños en el proceso de reproducción humana.

# TURBINE BLOWER

## IMPORTANT MESSAGE

Thank you for purchasing this Jacobsen product. You have purchased a world class product, one of the best designed and built anywhere.

This product comes with an Owner/Operator's Manual. The useful life and good service you receive from this product depends to a large extent on how well you read and understand this manual. Treat this product properly and adjust it as instructed, and it will give you many years of reliable service.

See a Jacobsen dealer for any service or parts needed. Jacobsen service ensures that you continue to receive the best results possible from Jacobsen products. You can trust Jacobsen replacement parts because they are manufactured with the same high precision and quality as the original parts.

Jacobsen designs and builds its equipment to serve many years in a safe and productive manner. For longest life, use this product only as directed in the manual, keep it in good repair and follow safety warnings and instructions. You'll always be glad you did.

**Jacobsen, a Textron Company**  
**One Bob Cat Lane**  
**Johnson Creek, WI 53038-0469**

<b>TABLE OF CONTENTS</b>	<b>FIGURES</b>	<b>PAGE</b>
INTRODUCTION / SPECIFICATIONS .....		2
SAFETY .....		3, 4
DECALS .....		5
INSTALLATION .....		6
OPERATION .....		7
SERVICE .....		8
PARTS SECTION .....		9
MAIN FRAME .....	FIGURE 1 .....	10, 11
MOUNTING ASSEMBLY .....	FIGURE 2 .....	12, 13
DRIVE PARTS / HYDRAULICS .....	FIGURE 3 .....	14, 15
TURBINE PARTS .....	FIGURE 4 .....	16, 17
DECALS .....	FIGURE 5 .....	18, 19

DESCRIPTION

The PB200 Turbine Power Blower is designed to attach to the quick-hitch of Steiner power units. Noise pollution will not be a concern with this turbine power blower. Quiet but powerful, it quickly cleans walkways, parking lots, leaves, debris, and more.

Features:

- Nozzle rotation 360 degrees continuous
- Nozzle rotation by hydraulic motor
- Kickstand for easy hookup
- Axial flow turbine design
- Quiet operation
- Direct airflow to either side or front from operator's seat
- Quick-Hitch, Front-Mount
- Caster Wheel follows ground contours
- Steel bumper protects nozzle

SPECIFICATIONS

Overall Width .....	27"
Overall Height .....	33"
Overall Length .....	67"
Weight.....	235 lbs.
Weight on caster wheel .....	195 lbs.
Air flow .....	8000 cfm
Wind speed .....	114 mph
Wind speed (deflected to front) .....	78 mph
Sound level (while seated in operator's seat) .....	91 dBA

\* These specifications are subject to change without notice.

## NOTICE !!!

Unauthorized modifications may present **extreme** safety hazards to operators and bystanders and could also result in product damage.

Jacobsen, a Textron Company strongly warns against, rejects and disclaims any modifications, add-on accessories or product alterations that are not designed, developed, tested and approved by Jacobsen Engineering Department. Any Jacobsen product that is altered, modified or changed in any manner not specifically authorized after original manufacture—including the addition of “after-market” accessories or component parts not specifically approved by Jacobsen—will result in the Jacobsen Warranty being voided.

Any and all liability for personal injury and/or property damage caused by any unauthorized modifications, add-on accessories or products not approved by Jacobsen will be considered the responsibility of the individual(s) or company designing and/or making such changes. Jacobsen will vigorously pursue full indemnification and costs from any party responsible for such unauthorized post-manufacture modifications and/or accessories should personal injury and/or property damage result.



This symbol means:  
**ATTENTION!**  
**BECOME ALERT!**

Your safety and the safety of others is involved.

## Signal word definitions:

The signal words below are used to identify levels of hazard seriousness. These words appear in this manual and on the safety labels attached to Jacobsen machines. For your safety and the safety of others, read and follow the information given with these signal words and/or the symbol shown above.

### **DANGER**

**DANGER** indicates an imminently hazardous situation which, if not avoided, **WILL** result in death or serious injury.

### **WARNING**

**WARNING** indicates a potentially hazardous situation which, if not avoided, **COULD** result in death or serious injury.

### **CAUTION**

**CAUTION** indicates a potentially hazardous situation which, if not avoided, **MAY** result in minor or moderate injury. It may also be used to alert against unsafe practices or property damage.

### **CAUTION**

**CAUTION** used without the safety alert symbol indicates a potentially hazardous situation which, if not avoided, **MAY** result in property damage



**MODEL NUMBER:** This number appears on sales literature, technical manuals and price lists.

**SERIAL NUMBER:** This number appears only on your mower. It contains the model number followed consecutively by the serial number. Use this number when ordering parts or seeking warranty information.

**GENERAL SAFETY**

- Read and understand the owner’s manual, before attempting to operate this machine.
- Operate all controls from the operator’s seat, (if so equipped). **NO RIDERS.**
- Keep all shields in place and safety switches adjusted properly.
- Do not leave equipment unattended. STOP the engine and remove the key (if so equipped).
- Do not allow minors or the inexperienced to operate this machine.
- Never allow anyone to operate or service this machine while under the influence of alcohol or drugs.
- Keep people and pets a safe distance away from machines using power driven attachments. Injury could result from flying debris.
- Wear all the necessary protective clothing and personal safety devices to protect your head, eyes, ears, hands, and feet.
- Operate the machine only in daylight or in good artificial light.

**OPERATING SAFETY**

1. Do not attempt to work on unit or any attachments with the engine running!

**⚠ WARNING**

The tractor may coast when the engine stops. Set the parking brake.

2. Before leaving the tractor seat:
  1. **Disengage PTO drive.**
  2. **Set PARKING brake.**
  3. **Stop Engine.**

**⚠ DANGER**

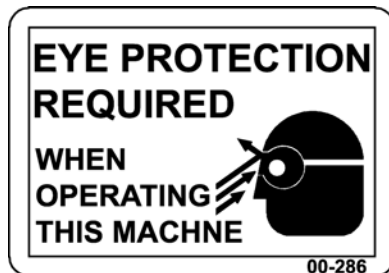
**DO NOT ATTEMPT TO CLEAN INLET OR OUTLET AREAS WITH BLOWER RUNNING.**

**⚠ DANGER**

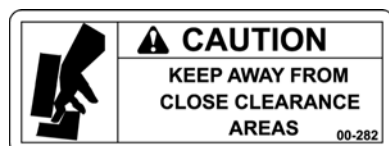
**DO NOT OPERATE WITH PERSONS IN THE AREA. HIGH SPEED BLOWER MAY PROPEL OBJECTS CAUSING POSSIBLE INJURY OR DEATH.**



Location: Main Frame



Location: Turbine Housing



Location: Front of Bumper



Location: Discharge Nozzle

## ATTACHING THE TURBINE POWER BLOWER

- Open the quick hitch latches and drive the tractor into position, aligning the quick hitch. Be sure that both latches are fully engaged and locked.
- Stop the engine! Do not attempt to install the drive belt with the engine running.
- Put the belt over the drive pulley and engage or adjust the double idler assembly.
- Attach the hydraulic hoses to the quick-couplers. Route the hoses in a place where they will not be damaged. If the hydraulic lever movement seems backward, reverse the hoses at the quick-couplers.

- Remove the clip pin from the support stand. Rotate the stand to the highest setting and insert clip pin. This stand is used to dismount the blower and position it at the correct height to simplify attaching the next time.
- A rear weight bar with 2 weights is required when this turbine power blower is attached to the Model 410 or 430 power unit.

**NOTE: Always remove rear weights when front mounted attachment is removed!**



### OPERATING THE TURBINE POWER BLOWER

#### Controls

- The Front Lift lever controls the lift. Normal operation is to have the lever in the "FLOAT" position.
- The Auxiliary Hydraulic lever controls the position of the nozzle. It will rotate in a continuous 360 degree rotation. The downward position directs the airflow in a forward direction.

#### **CAUTION**

Always wear eye protection when operating this blower.

#### Operating Instructions

- Rotate the nozzle downward for forward flow of air. This is especially helpful when working close to buildings.

**NOTE:** When the nozzle is pointing straight down, the positioning decal on top of the nozzle will be centered. (See Photo 1)

- Observe the wind direction and work with the wind whenever possible. The blower works equally well when traveling forward or reverse. When clearing large areas it is advisable to use patterns which blow all the debris in the same direction.

#### **CAUTION**

**USE CAUTION WHEN OPERATING NEAR PERSONS, PETS, AND LIGHTWEIGHT OBJECTS WHICH MAY TIP OR ROLL WITH THE HIGH VELOCITY OF THE BLOWER. NOTE THAT THE VELOCITY IS OF HURRICANE RATING.**

**FLYING DEBRIS CAN ALSO CAUSE DAMAGE TO PERSONS, AUTOS, WINDOWS, ETC.**



Photo 1

#### Operator Warnings!

##### Visual check

- Check for damaged or missing parts or fasteners each time the blower is operated. Repair or replace.
- Do not operate if the nozzle or drive have been modified in any way.

##### Chemical applications

- Use of the turbine blower to apply spray chemicals is not recommended.

##### Bystanders

- Warn all bystanders to keep a safe distance away while blower is in operation.

##### Machine stability

- A rear weight bar with 2 weights is required when this unit is mounted on the Model 410 and 430 power units.

##### Nozzle

- Use care that the nozzle does not bump into objects during operation. Do not operate with damaged or bent nozzle.

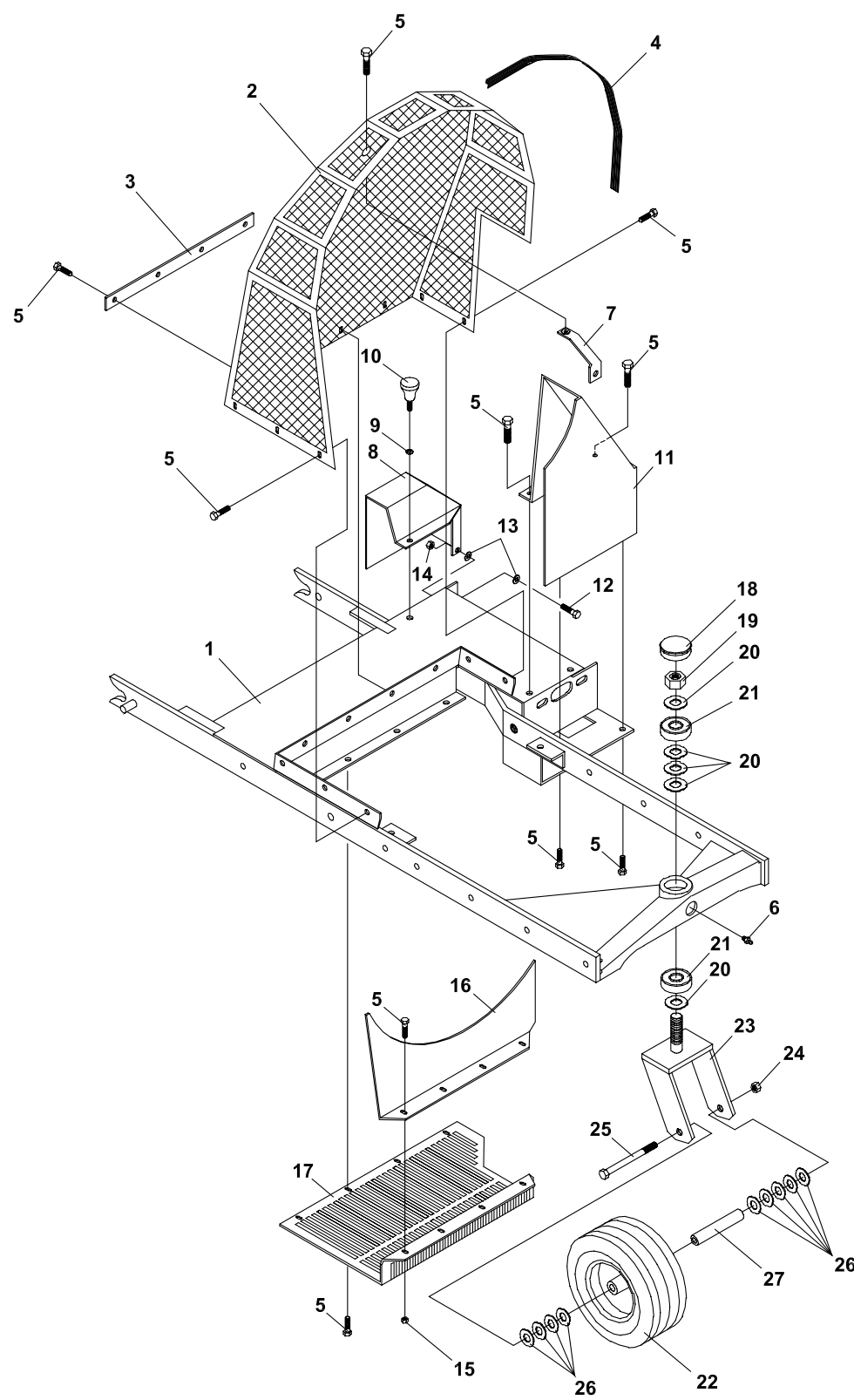
SERVICE SCHEDULE	ADJUSTMENTS
<p>Daily:</p> <ul style="list-style-type: none"><li>Check for any signs of loose bolts and tighten as needed.</li><li>Check inlet area and outlet nozzle for collection of foreign material and clean as needed.</li></ul> <p>25 hour:</p> <ul style="list-style-type: none"><li>In addition to daily service, grease the two bearings on the drive shaft, the caster swivel, and caster wheel.</li><li>Lubricate the nozzle base with a dry lubricant spray such as teflon or graphite.</li></ul> <p><b>NOTE:</b> The turbine has sealed bearings and does not require periodic lubrication.</p>	<p>Turbine drive belt:</p> <p>Remove the drive belt shield. Tighten the drive belt by loosening the front bearing mount bolts, move the drive shaft with the adjusting screw, and re-tighten mount bolts. Replace the shield.</p> <p>Nozzle rotation belt:</p> <p>Remove the nozzle drive belt shield. Adjust the belt by loosening the hydraulic motor mounting bolts, and move the pump in the mounting slot. Replace the shield.</p>

# **PARTS SECTION**

MAIN FRAME

TURBINE  
BLOWER

FIGURE 1



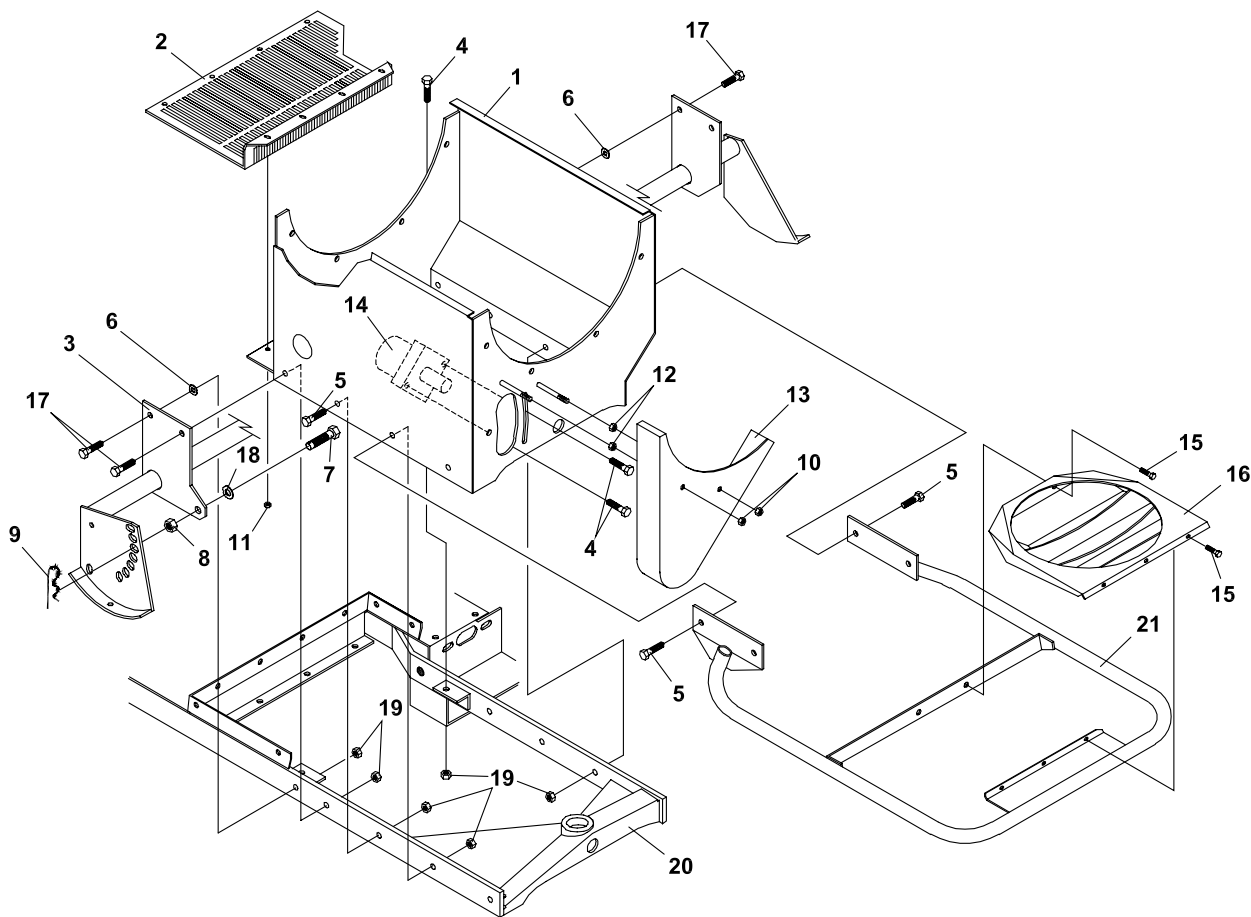
# TURBINE BLOWER

## MAIN FRAME

FIGURE 1

ITEM	PART NO.	DESCRIPTION	QTY	ITEM	PART NO.	DESCRIPTION	QTY
1-1	6110055.7	MAIN FRAME	1				
1-2	6110053.7	INTAKE SCREEN	1				
1-3	6110015.7	STRAP-RETAINING	1				
1-4	56-027	TRIM-4'	1				
1-5	64139-04	BOLT-WLF 1/4-20X3/4	22				
1-6	29-010	S/B GREASE FITTING	1				
1-7	6110047.7	BRACE	1				
1-8	64-611.7	SHIELD-DRIVE PULLEY	1				
1-9	99-G06	WASHER, 1/4"	1				
1-10	47-077	KNOB	1				
1-11	6110058.7	GUARD	1				
1-12	64123-54	BOLT, 5/16-18X3/4	1				
1-13	64163-04	25/64X5/8X16GA WASHER	2				
1-14	64229-02	LOCKNUT-NYLON 5/16-18	1				
1-15	64141-2	NUT-WLF 1/4-20	4				
1-16	6110010.7	GUARD-LOWER	1				
1-17	6110011.7	INTAKE SCREEN-LOWER	1				
1-18	53-060	HUB CAP	1				
1-19	99-AC12NFNUT, 3/4		1				
1-20	64163-06	WSHR-.768/.756X1.25X14	5				
1-21	55-Z9504AB	BALL BEARING-3/4ID	2				
1-22	53-112	WHEEL-W/410-4 TIRE	1				
	55-G527	BEARING	1				
1-23	6110059.7	FRAME-CASTER WHEEL	1				
1-24	64141-4	NUT-WLF 3/8-16	1				
1-25	64123-130	BLT-HEX 3/8-16X5-1/2	1				
1-26	64163-16	WASHER-41/64 X 1-3/8 X 12	9				
1-27	6110046	AXLE	1				

FIGURE 2



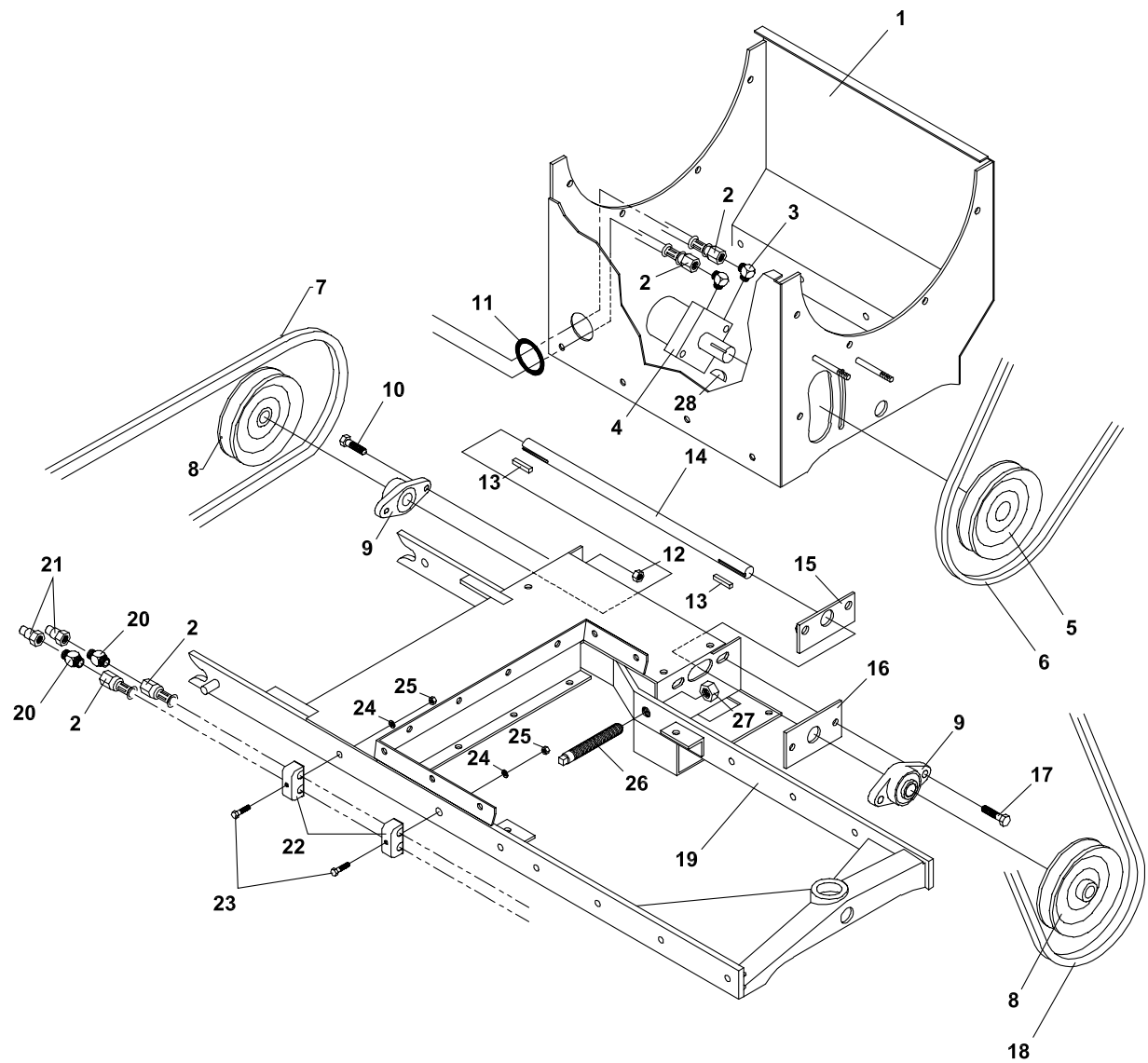
# TURBINE BLOWER

## MOUNTING ASSEMBLY

FIGURE 2

ITEM	PART NO.	DESCRIPTION	QTY	ITEM	PART NO.	DESCRIPTION	QTY
2-1	6110052.7	TURBINE MNTNG STAND	1				
2-2	6110011.7	INTAKE SCREEN, LOWER	1				
2-3	6110056.7	KICKSTAND	1				
2-4	64139-21	BLT-WLF 3/8-16X3/4	4				
2-5	64139-24	BLT-WLF 3/8-16 X 1	6				
2-6	64-799	WASHER, 13/32 ID X 1-9/32	2				
2-7	99-F36	BOLT, LEG RETAINER	1				
2-8	64141-13	NUT WLF 1/2-13	1				
2-9	02-PP0420	PRESTO PIN	1				
2-10	64229-02	LOCKNUT-NYLON 5/16-18	2				
2-11	64141-2	NUT-WLF 1/4-20	4				
2-12	64141-6	NUT, 5/16-18	2				
2-13	6110054.7	GUARD-NOZZLE	1				
2-14	21-135	MOTOR	1				
	21-136	SEAL KIT	1				
2-15	64139-04	BOLT-WLF 1/4-20X3/4	5				
2-16	6110051.7	DEFLECTOR CHUTE	1				
2-17	64139-18	BLT-WLF 3/8-16X1-1/4	4				
2-18	64163-67	WASHER-.516X1X12GA	1				
2-19	64141-4	NUT-WLF 3/8-16	12				
2-20	6110055.7	MAIN FRAME	1				
2-21	6110050.7	BUMPER	1				

FIGURE 3





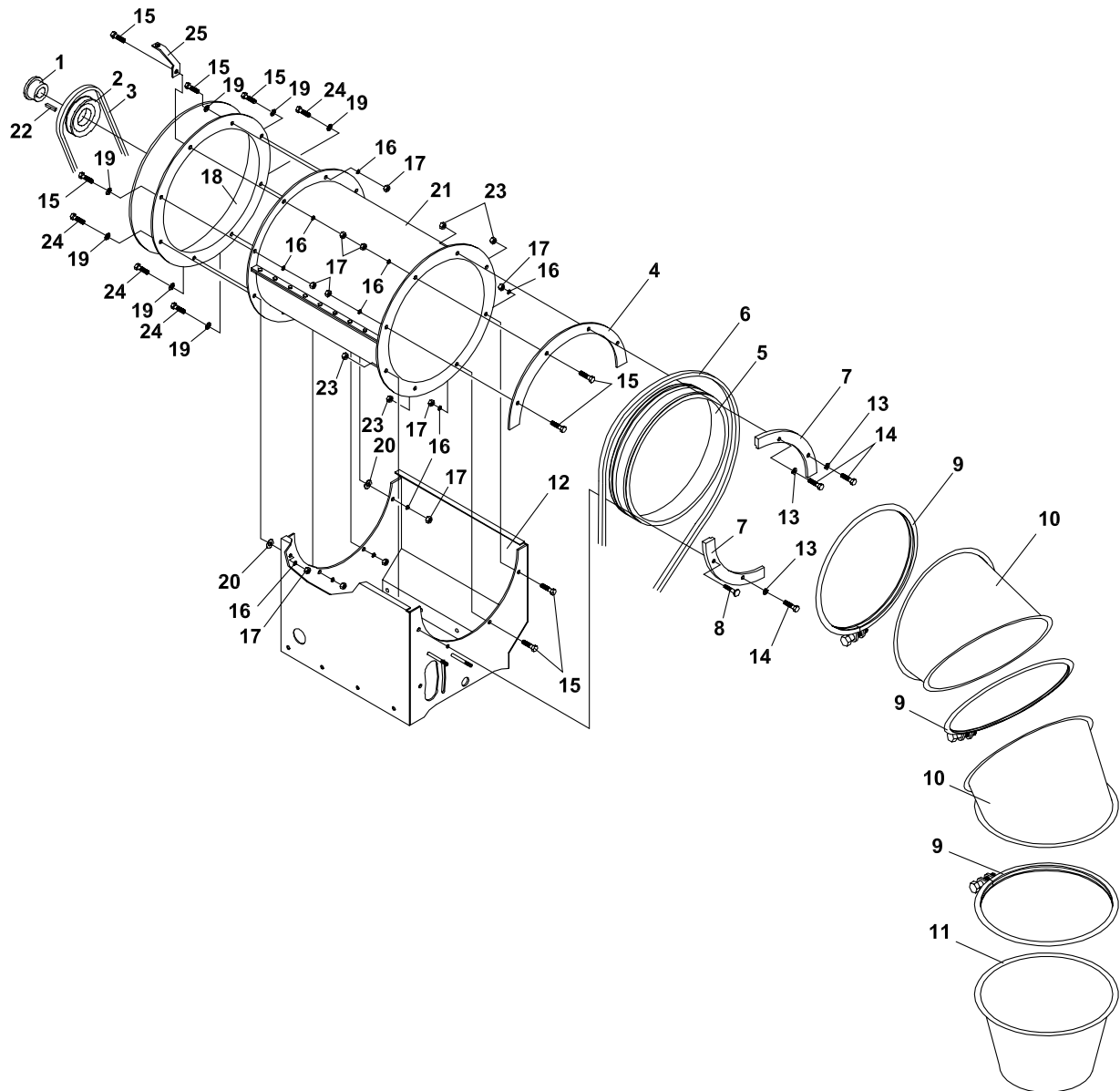
# TURBINE BLOWER

## DRIVE PARTS / HYDRAULICS

FIGURE 3

ITEM	PART NO.	DESCRIPTION	QTY	ITEM	PART NO.	DESCRIPTION	QTY
3-1	6110052.7	TURBINE MNTG STAND	1				
3-2	20-017	HOSE, 1/4 X 70	2				
3-3	25-2503-10-6	FITTING-90	2				
3-4	21-135	MOTOR-HYD	1				
	21-136	SEAL KIT	1				
3-5	83-BS2816	PULLEY	1				
3-6	81-A053	BELT-A53	1				
3-7	81-A040	BELT-84420 PRIVATE LBL	1				
3-8	83-BK5012	PULLEY-5"	2				
3-9	55-FB23012	BEARING	2				
3-10	64139-24	BLT-WLF 3/8-16 X 1	2				
3-11	05-039	GROMMET-1-5/16IDX2OD	1				
3-12	64141-4	NUT-WLF 3/8-16	2				
3-13	64164-11	KEY-3/16X3/16X1-1/4	2				
3-14	6110009	SHAFT-INPUT DRIVE	1				
3-15	6110057.7	MOUNTING PLATE-BRG	1				
3-16	6110030.7	SPACER-BRG PLATE	1				
3-17	99-K73	BOLT-FLANGE 3/8-16X1-1/2	2				
3-18	81-B050	BELT-B50	1				
3-19	6110055.7	MAIN FRAME	1				
3-20	25-0103-4-6	FITTING-STR	2				
3-21	23-004	QUICK COUPLER-MALE	2				
3-22	11-050	CLAMP	2				
3-23	90-0414	BOLT, 1/4-20 X 1-3/4	2				
3-24	64163-55	WASHER .328X.75X14	2				
3-25	64229-01	LOCKNUT-NYLON 1/4-20	2				
3-26	6110014	BOLT-ADJ 5/8	1				
3-27	99-E11	NUT, STEERING VALVE	1				
3-28	85-W0408	WOODRUFF KEY-1/4 X 1	1				

FIGURE 4



# TURBINE BLOWER

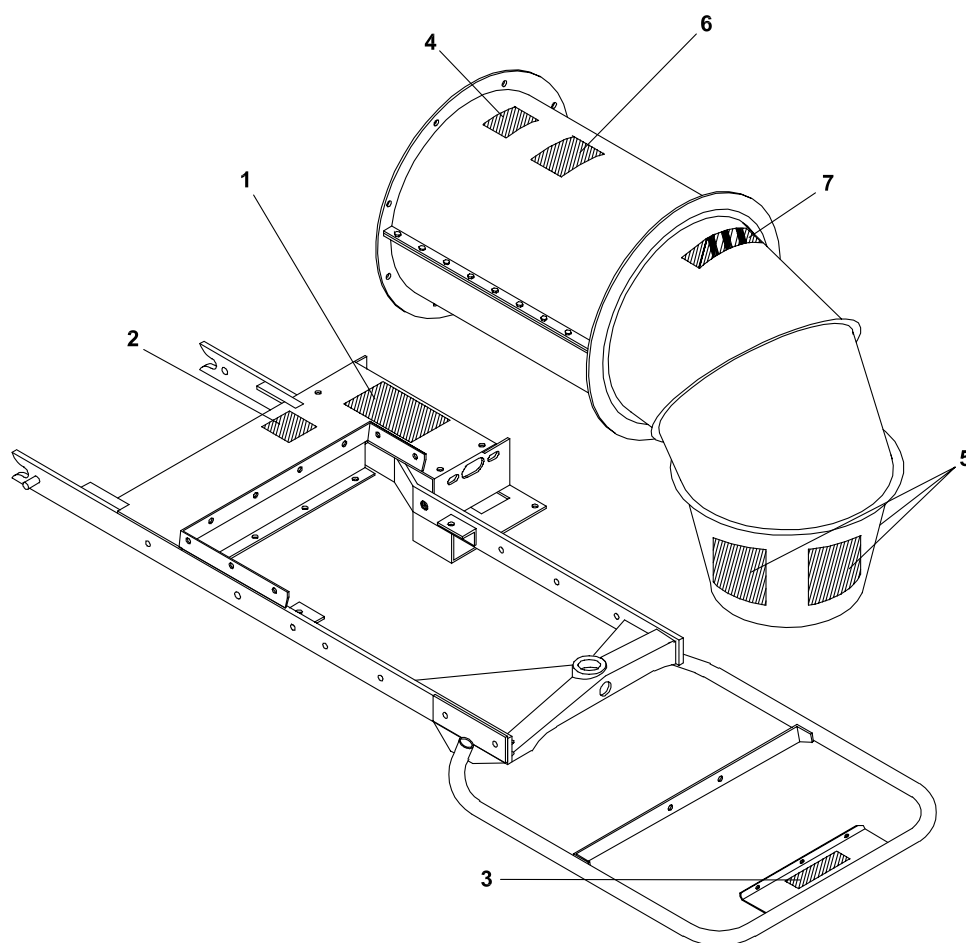
## TURBINE PARTS

FIGURE 4

ITEM	PART NO.	DESCRIPTION	QTY	ITEM	PART NO.	DESCRIPTION	QTY
4-1	83-H20	BUSHING, 1-1/4" H	1				
4-2	83-BK65H	PULLEY-6.5" H BUSHING	1				
4-3	81-B050	BELT-B50	1				
4-4	6110022.7	SPACER-NOZZLE RING	1				
4-5	87-14-138ER	BASE-NOZZLE RING	1				
4-6	81-A053	BELT-A53	1				
4-7	87-14-1600	SLIDE-NOZZLE	2				
4-8	6110042	BOLT	1				
4-9	87-14-139	BANDS-CLAMP	3				
4-10	87-14-137	ELBOW-45	2				
4-11	87-14-136B	NOZZLE-10" DIA RND	1				
4-12	6110052.7	TURBINE MNTNG STAND	1				
4-13	87-14-1660	WASHER	3				
4-14	91-0614	BOLT, 3/8-24 X 1-3/4	3				
4-15	64123-21	BLT-HEX 3/8-24X1-1/4	8				
4-16	64006-03	LOCKWASHER-3/8 HEL	12				
4-17	64025-04	NUT-3/8-24	12				
4-18	87-14-221-D1	BELLMOUTH	1				
4-19	64163-61	WSHR .81X.406X16GA	7				
4-20	87-14-1605-A	SPACER-3/8 X 1 X 3/16	2				
4-21	87-14-924	BLOWER-TURBINE ASSY	1				
	* 00-290	DECAL-ROTATION POS IND	1				
4-22	85-K030410	KEY-3/16 X 1/4 X 1-1/4	1				
4-23	99-A06NF	LOCKNUT, STOVER 3/8-24	4				
4-24	91-0612	BOLT, 3/8-24 X 1-1/2	4				
4-25	6110047.7	BRACE-INTAKE SCREEN	1				

\* NOT ILLUSTRATED

FIGURE 5



# TURBINE BLOWER

## DECALS

FIGURE 5

ITEM	PART NO.	DESCRIPTION	QTY	ITEM	PART NO.	DESCRIPTION	QTY
5-1	00-093	DECAL-OWNER'S MANUAL	1				
5-2	4116761	DECAL-MADE IN AMERICA	1				
5-3	00-282	DECAL-CLOSE CLEARANCE	1				
5-4	00-286	DECAL-EYE PROTECTION	1				
5-5	00-375	DECAL-THROWN OBJ HAZ	3				
5-6	87-BT-4X4	DECAL-BUFFALO TURBINE	1				
5-7	00-290	DECAL-ROT POS IND	1				

## **World Class Quality, Performance And Support**



Equipment from Jacobsen, a Textron company, is built to exacting standards ensured by ISO 9001 and ISO 14001 registration at all our manufacturing locations.

A worldwide dealer network and factory-trained technicians backed by Textron Parts Xpress provide reliable, high-quality product support.



---

***BOB-CAT BROWER BUNTON CUSHMAN RYAN STEINER***