



OWNER/OPERATOR'S MANUAL & ILLUSTRATED PARTS LIST

MODEL:

73-70696 CORE AERATOR AR240



WARNING: If incorrectly used this machine can cause severe injury. Those who use and maintain this machine should be trained in its proper use, warned of its dangers and should read the entire manual before attempting to set up, operate, adjust or service the machine.



09-366 REV A

CALIFORNIA
Proposition 65 Warning

Diesel engine exhaust and some of its constituents are known to the State of California to cause cancer, birth defects and other reproductive harm.



WARNING

The engine exhaust from this product contains chemicals known to the State of California to cause cancer, birth defects or other reproductive harm.

Californie Proposition 65
Avertissement

Les échappements des moteurs diesel et certains de leurs composés sont reconnus par l'Etat de Californie pour être cancérigènes, provoquer des défauts congénitaux et d'autres dangers en matière de reproduction.



AVERTISSEMENT

L'émission du moteur de ce matériel contient des produits chimiques que l'Etat de Californie considère être cancérigènes, provoquer des défauts congénitaux et d'autres dangers en matière de reproduction.

California Advertencia
de la Proposicion 65

El estado de California hace saber que los gases de escape de los motores diesel y algunos de sus componentes producen cáncer, defectos de nacimiento y otros daños en el proceso de reproducción humana.



ADVERTENCIA

El estado de California hace saber que los gases de escape de este producto contienen productos químicos que producen cáncer, defectos de nacimiento y otros daños en el proceso de reproducción humana.

CORE AERATOR

IMPORTANT MESSAGE

Thank you for purchasing this Jacobsen product. You have purchased a world class product, one of the best designed and built anywhere.

This product comes with an Owner/Operator's Manual. The useful life and good service you receive from this product depends to a large extent on how well you read and understand this manual. Treat this product properly and adjust it as instructed, and it will give you many years of reliable service.

See a Jacobsen dealer for any service or parts needed. Jacobsen service ensures that you continue to receive the best results possible from Jacobsen products. You can trust Jacobsen replacement parts because they are manufactured with the same high precision and quality as the original parts.

Jacobsen designs and builds its equipment to serve many years in a safe and productive manner. For longest life, use this product only as directed in the manual, keep it in good repair and follow safety warnings and instructions. You'll always be glad you did.

Jacobsen, a Textron Company
One Bob Cat Lane
Johnson Creek, WI 53038-0469

TABLE OF CONTENTS	FIGURES	PAGE
INTRODUCTION		2
SPECIFICATIONS		3
SAFETY		4-6
INSTALLATION / REMOVAL		7
OPERATION		8
SERVICE		9
MAIN FRAME ASSEMBLY	FIGURE 1	10, 11
AXLE & DISK ASSEMBLY	FIGURE 2	12, 13

DESCRIPTION

This 4 wheel drive tractor with rugged front mounted core areator is the perfect combination for fast effective turf penetration.

Spring and fall aeration programs benefit from core aeration. Soil cores up to 3-1/2 inches are removed with minimum surface disturbance.

Seven ground driven rotors with greaseable bushings have six tines each for a total of forty-two tines.

Down pressure of the front lift uses the weight of the tractor to penetrate turf.

This aerator has four weights and a weight box to carry additional weight if extra penetration is required.



CORE AERATOR

SPECIFICATIONS

SPECIFICATIONS

Weight.....	390 lbs. (177 Kg) with 4 weights
Overall Width	45-1/2" (1156 mm)
Working Width	40-1/4" (1022 mm)
Overall Height	28-1/2" (724 mm)
Overall Length	30" (762 mm)
Main Shaft Bearings	Greaseable 1-1/4"
Aerating Wheels	7 Steel w/bushings and pressurized lubrication fitting
Tines	6 per wheel...3/4" core tines
Aerating Width (actual)	42" (1067 mm)
Aerating Width (effective)	48" (1219 mm)
Aerating Depth	Up to 3-1/2" (89 mm)
Aerating Pattern	6-1/2" (165 mm) x 7" (178 mm)

NOTICE !!!

Unauthorized modifications may present **extreme** safety hazards to operators and bystanders and could also result in product damage.

Jacobsen, a Textron Company strongly warns against, rejects and disclaims any modifications, add-on accessories or product alterations that are not designed, developed, tested and approved by Jacobsen Engineering Department. Any Jacobsen product that is altered, modified or changed in any manner not specifically authorized after original manufacture—including the addition of “after-market” accessories or component parts not specifically approved by Jacobsen—will result in the Jacobsen Warranty being voided.

Any and all liability for personal injury and/or property damage caused by any unauthorized modifications, add-on accessories or products not approved by Jacobsen will be considered the responsibility of the individual(s) or company designing and/or making such changes. Jacobsen will vigorously pursue full indemnification and costs from any party responsible for such unauthorized post-manufacture modifications and/or accessories should personal injury and/or property damage result.



This symbol means:
ATTENTION!
BECOME ALERT!

Your safety and the safety of others is involved.

Signal word definitions:

The signal words below are used to identify levels of hazard seriousness. These words appear in this manual and on the safety labels attached to Jacobsen machines. For your safety and the safety of others, read and follow the information given with these signal words and/or the symbol shown above.

DANGER

DANGER indicates an imminently hazardous situation which, if not avoided, **WILL** result in death or serious injury.

WARNING

WARNING indicates a potentially hazardous situation which, if not avoided, **COULD** result in death or serious injury.

CAUTION

CAUTION indicates a potentially hazardous situation which, if not avoided, **MAY** result in minor or moderate injury. It may also be used to alert against unsafe practices or property damage.

CAUTION

CAUTION used without the safety alert symbol indicates a potentially hazardous situation which, if not avoided, **MAY** result in property damage



MODEL NUMBER: This number appears on sales literature, technical manuals and price lists.

SERIAL NUMBER: This number appears only on your mower. It contains the model number followed consecutively by the serial number. Use this number when ordering parts or seeking warranty information.

GENERAL SAFETY

1. Read and understand the Owner's Manual before attempting to operate this machine.
2. Operate all controls from the operator's seat. **NO RIDERS.**
3. Keep all shields in place and safety switches adjusted properly.
4. Do not leave equipment unattended. STOP the engine and remove the key.
5. Do not allow minors or the inexperienced to operate this machine.
6. Keep people and pets a safe distance away from machine using power driven attachments. Injury could result from flying debris.

OPERATING SAFETY

1. **STOP ENGINE** to install drive belts or make adjustments.
2. **WARNING!** The tractor may coast when the engine stops. Set Parking Brake.
3. **DO NOT TOW!** Serious damage to the hydraulic system will result.
4. **DO NOT** attempt to work on unit or any attachments with the engine running. **STOP ENGINE!**
5. Before leaving the tractor seat:
 - **Disengage PTO drive.**
 - **Set PARK brake.**
 - **Stop engine.**

⚠ CAUTION

Be alert for irrigation lines, sprinkler systems, stones, curbs or any objects in the path of the aerator.

⚠ CAUTION

Be careful when operating on slopes. The steering ability is reduced when down pressure is applied to the implement.

⚠ CAUTION

Prevent tipping over.
Lower support stands into position before removing attachment from tractor

⚠ CAUTION

Always remove all rear weights when front mounted attachments are removed to reduce the danger of unit tipping over backward while climbing steep slopes or loading ramps.



CORE AERATOR

INSTALLATION / REMOVAL

INSTALLATION INSTRUCTIONS FOR AERATOR

1. Attach to 4-wheel drive tractor only. This aerator will not work with any other style tractor.
2. Attach to front lift in the usual manner.
3. Place the support stand in the operating position as shown.
4. Attach rear weight bar with 4 weights.



Support stands in operating ("up") position

REMOVAL INSTRUCTIONS FOR AERATOR

1. Thoroughly clean tines inside and out. When storing unit apply a light coat of oil to prevent rust and assure proper coring the next time the unit is put into service.
2. Lower support stands to the down position.
3. Detach from the front lift in the usual manner.

NOTE:

Always remove rear weights when front attachment is removed.



Support stands in ("down") position

OPERATING INSTRUCTIONS

1. With tractor in motion, apply down pressure sufficiently to raise the front wheels of the tractor off the ground. This applies the weight of the tractor to the aerator and enables you to steer.
2. Raise the aerator at the end of each pass. Do not attempt sharp turns with aerator lowered into the soil.

⚠ CAUTION

Do not back up or operate in reverse with aerator lowered into the soil. Damage to tines may result.

3. Adjust the amount of down pressure, weight and ground speed according to conditions. Use caution when operating on slopes. The steering ability is reduced when down pressure is applied to the implement.
4. In dry hard turf conditions it may be necessary to irrigate before aerating. Also additional weight may be added in the aerator weight box. 4 weights are standard with the aerator.

NOTE:

A rear weight bar with 4 weights is required for stability.



Operating Aerator

LUBRICATION

Daily:

- Visual inspection.
Grease individual tine wheel bushings until grease can be seen at the wheel bushings.

25 Hour:

- In addition to daily: Grease aerator main shaft bearings.

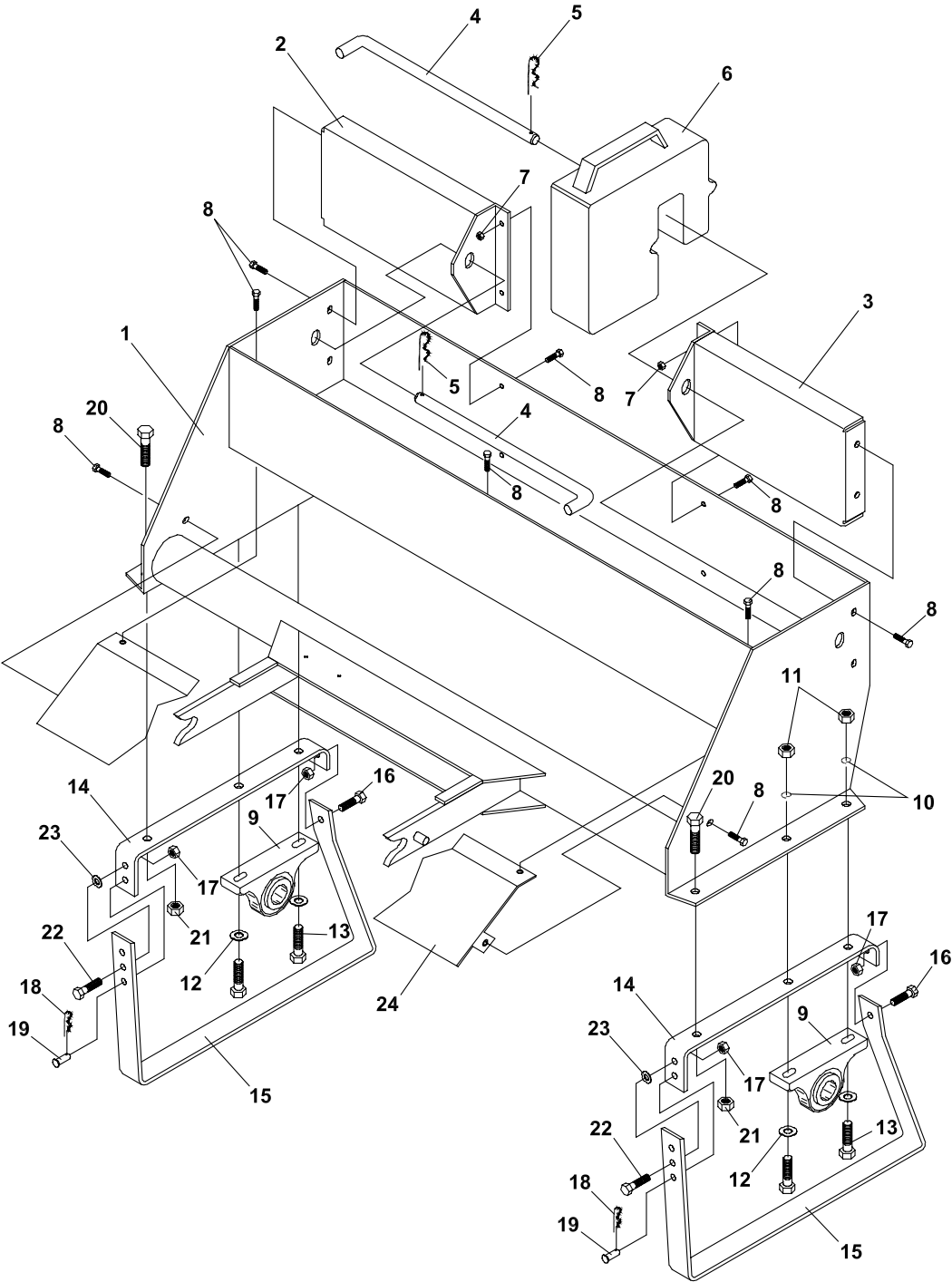
TINE OR TINE WHEEL REPLACEMENT

1. Attach unit to tractor for stability.
2. Raise unit and place jack stands under the frame.
3. Replace tines as needed.
4. To replace tine wheels: Remove the entire rotor as an assembly by removing the pillow block bearings from the main frame. Proceed to disassemble the shaft and bearings as needed.

MAIN FRAME ASSEMBLY

CORE AERATOR

FIGURE 1



CORE AERATOR

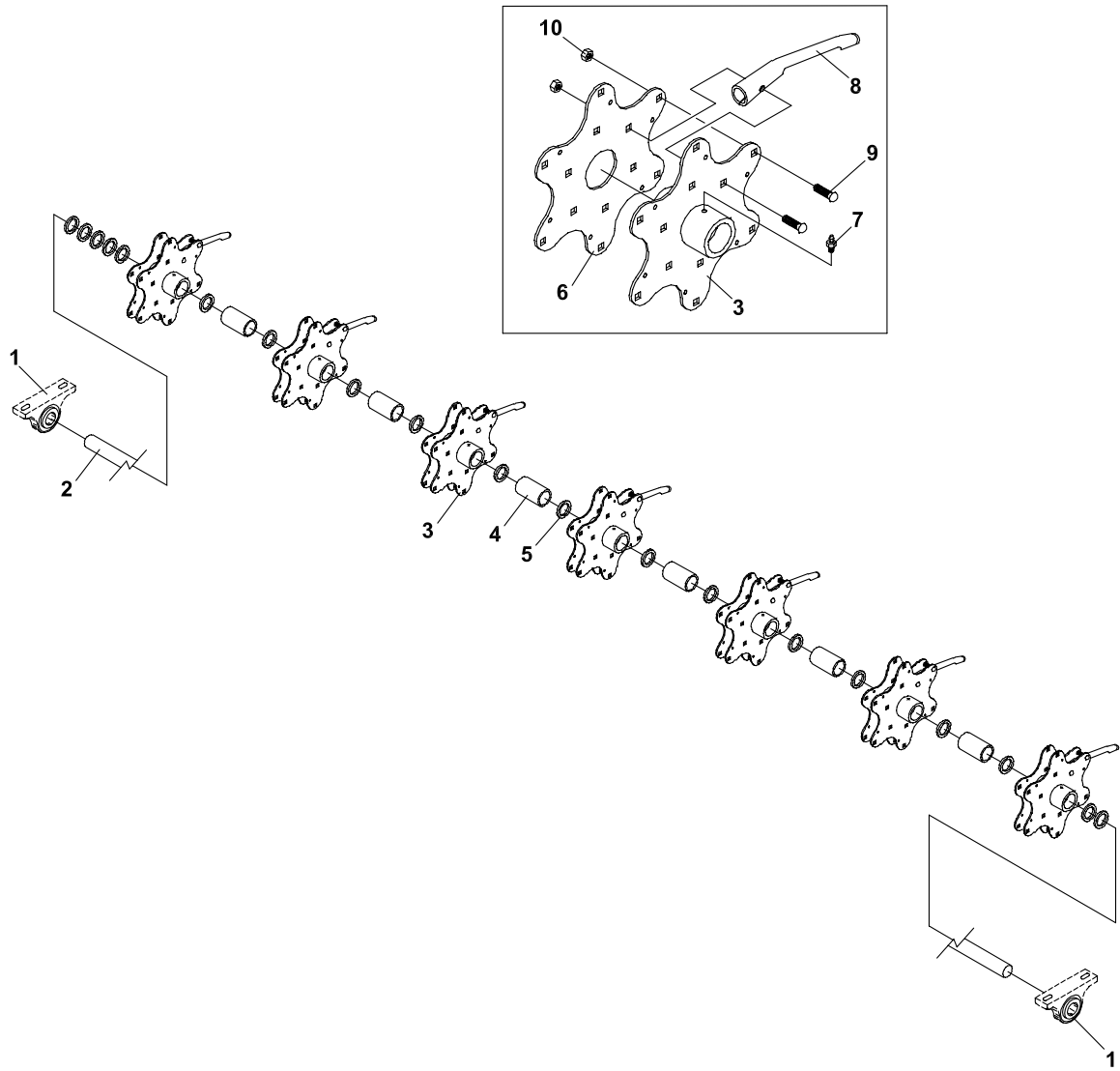
MAIN FRAME ASSEMBLY

FIGURE 1

ITEM	PART NO.	DESCRIPTION	QTY	ITEM	PART NO.	DESCRIPTION	QTY
1-1	6100000	WLDMT-AR240 MAIN FRAME	1				
1-2	6100020	WEIGHT BAR, L.H.	1				
1-3	6100021	WEIGHT BAR, R.H.	1				
1-4	6100015	ROD, WEIGHT SECURITY	2				
1-5	02-PP0420	PRESTO PIN, 1/8 X 2-9/16	2				
1-6	62-540	WEIGHT, 50#	4				
1-7	64141-2	NUT-WLF 1/4-20	4				
1-8	64139-04	BOLT-WLF 1/4-20X3/4	13				
1-9	55-PB22020	BEARING, PILLOW 1-1/4"	2				
1-10	64006-05	LOCKWSHR-HELICAL 1/2	4				
1-11	64025-09	HEX, NUT 1/2-13	4				
1-12	64163-67	WASHER-.516X1X12GA	4				
1-13	64123-24	BLT-HEX 1/2-13X2	4				
1-14	6100022	MOUNTING BRACKET	2				
1-15	6100023	SAFETY STAND	2				
1-16	64123-50	BOLT-HEX 3/8-16X1	2				
1-17	64229-03	LOCKNUT-NYLON 3/8-16	4				
1-18	02-PP0313	PIN, 3/16 x 1.5/8	2				
1-19	03-0610	CLEVIS PIN, 3/8 X 1-1/4	2				
1-20	64139-22	BLT-WLF 1/2-13X1	2				
1-21	64141-13	NUT WLF 1/2-13	2				
1-22	64123-16	BLT-HEX 3/8-16X1-1/4	2				
1-23	64163-61	WSHR .81X.406X16GA	2				
1-24	6100026	SHIELD, REAR	1				
*	202525	DECAL-CAUTION READ MAN	1				
*	4116761	LABEL-MADE IN USA	1				
*	00-092	DECAL-HANDS & FEET	2				

* NOT ILLUSTRATED

FIGURE 2



CORE AERATOR

AXLE & DISK ASSEMBLY

FIGURE 2

ITEM	PART NO.	DESCRIPTION	QTY	ITEM	PART NO.	DESCRIPTION	QTY
2-1	55-PB22020	BEARING, PILLOW 1-1/4"	2				
2-2	6100012	AXLE, TINE	1				
2-3	6100013	HUB, SPOON	7				
2-4	6100005	SPACER, SHAFT	6				
2-5	99-B54	WASHER	19				
2-6	6100011	DISC, CORE AERATOR	7				
2-7	29-010	S/B GREASE FITTING	7				
2-8	522361	TINE, CORING 3/4	42				
	515196	AERATOR TINE-1/2" OPT.	42				
2-9	97-0514	CARG BOLT-5/16-18 X 1-3/4	84				
2-10	64229-02	LOCKNUT-NYLON 5/16-18	84				

World Class Quality, Performance And Support



Equipment from Jacobsen, a Textron company, is built to exacting standards ensured by ISO 9001 and ISO 14001 registration at all our manufacturing locations.

A worldwide dealer network and factory-trained technicians backed by Textron Parts Xpress provide reliable, high-quality product support.



BOB-CAT BROWER BUNTON CUSHMAN RYAN STEINER