



# OWNER/OPERATOR'S MANUAL & ILLUSTRATED PARTS LIST

---

## MODEL:

**75-70709 CAB FOR 220 TRACTOR CB220**



*WARNING: If incorrectly used this machine can cause severe injury. Those who use and maintain this machine should be trained in its proper use, warned of its dangers and should read the entire manual before attempting to set up, operate, adjust or service the machine.*



**09-206 REV A**

**CALIFORNIA**  
**Proposition 65 Warning**

Diesel engine exhaust and some of its constituents are known to the State of California to cause cancer, birth defects and other reproductive harm.



**WARNING**

The engine exhaust from this product contains chemicals known to the State of California to cause cancer, birth defects or other reproductive harm.

**Californie Proposition 65**  
**Avertissement**

Les échappements des moteurs diesel et certains de leurs composés sont reconnus par l'Etat de Californie pour être cancérigènes, provoquer des défauts congénitaux et d'autres dangers en matière de reproduction.



**AVERTISSEMENT**

L'émission du moteur de ce matériel contient des produits chimiques que l'Etat de Californie considère être cancérigènes, provoquer des défauts congénitaux et d'autres dangers en matière de reproduction.

**California Advertencia**  
**de la Proposicion 65**

El estado de California hace saber que los gases de escape de los motores diesel y algunos de sus componentes producen cáncer, defectos de nacimiento y otros daños en el proceso de reproducción humana.



**ADVERTENCIA**

El estado de California hace saber que los gases de escape de este producto contienen productos químicos que producen cáncer, defectos de nacimiento y otros daños en el proceso de reproducción humana.

# TURF UNIT CAB

## IMPORTANT MESSAGE

Thank you for purchasing this Jacobsen product. You have purchased a world class product, one of the best designed and built anywhere.

This product comes with an Owner/Operator's Manual. The useful life and good service you receive from this product depends to a large extent on how well you read and understand this manual. Treat this product properly and adjust it as instructed, and it will give you many years of reliable service.

See a Jacobsen dealer for any service or parts needed. Jacobsen service ensures that you continue to receive the best results possible from Jacobsen products. You can trust Jacobsen replacement parts because they are manufactured with the same high precision and quality as the original parts.

Jacobsen designs and builds its equipment to serve many years in a safe and productive manner. For longest life, use this product only as directed in the manual, keep it in good repair and follow safety warnings and instructions. You'll always be glad you did.

**Jacobsen, a Textron Company**  
**One Bob Cat Lane**  
**Johnson Creek, WI 53038-0469**

<b>TABLE OF CONTENTS</b>	<b>FIGURES</b>	<b>PAGE</b>
INTRODUCTION .....		2
SPECIFICATIONS .....		3
SAFETY .....		4, 5
SAFETY .....		5
INSTALLATION / REMOVAL .....		6
ASSEMBLY INSTRUCTIONS .....		7-15
CAB PARTS (1) .....	FIGURE 1 .....	16, 17
CAB PARTS (2) .....	FIGURE 2 .....	18, 19

### DESCRIPTION

The sturdy CB220 cab is carefully designed to fit the Model 220 or 230 2 X 4 TURF UNIT equipped with a ROPS roll bar. It is extremely useful in cold weather when operating a snowblower or a power angle blade.

Exceptional features include ease of entry from either side, full glass windshield, back window and lightweight removable doors. Supported by the ROPS roll bar and equipped with a seat belt, the operator has added comfort and safety protection. Overall visibility is good with the cab installed.

A windshield wiper is standard equipment. Additional lights and safety lights may be added as desired by the owner.



# TURF UNIT CAB

## SPECIFICATIONS

### SPECIFICATIONS

Overall Height-Installed .....	69"
Overall Width .....	43-1/2"
Cab Length .....	44"
Head Room .....	41-1/2"
Inside Roof Width .....	41"
Roof Length .....	31"
Roof Width (outside) .....	42"
Safety Laminated Glass .....	Windshield and Rear Window
Windshield Wiper .....	Electric, 12 volt
Doors .....	Steel Frame, Fabric Covered
Mounting .....	Frame and ROPS Roll Bar

## NOTICE !!!

Unauthorized modifications may present **extreme** safety hazards to operators and bystanders and could also result in product damage.

Jacobsen, a Textron Company strongly warns against, rejects and disclaims any modifications, add-on accessories or product alterations that are not designed, developed, tested and approved by Jacobsen Engineering Department. Any Jacobsen product that is altered, modified or changed in any manner not specifically authorized after original manufacture—including the addition of “after-market” accessories or component parts not specifically approved by Jacobsen—will result in the Jacobsen Warranty being voided.

Any and all liability for personal injury and/or property damage caused by any unauthorized modifications, add-on accessories or products not approved by Jacobsen will be considered the responsibility of the individual(s) or company designing and/or making such changes. Jacobsen will vigorously pursue full indemnification and costs from any party responsible for such unauthorized post-manufacture modifications and/or accessories should personal injury and/or property damage result.



This symbol means:  
**ATTENTION!**  
**BECOME ALERT!**

Your safety and the safety of others is involved.

## Signal word definitions:

The signal words below are used to identify levels of hazard seriousness. These words appear in this manual and on the safety labels attached to Jacobsen machines. For your safety and the safety of others, read and follow the information given with these signal words and/or the symbol shown above.

### **DANGER**

**DANGER** indicates an imminently hazardous situation which, if not avoided, **WILL** result in death or serious injury.

### **WARNING**

**WARNING** indicates a potentially hazardous situation which, if not avoided, **COULD** result in death or serious injury.

### **CAUTION**

**CAUTION** indicates a potentially hazardous situation which, if not avoided, **MAY** result in minor or moderate injury. It may also be used to alert against unsafe practices or property damage.

### **CAUTION**

**CAUTION** used without the safety alert symbol indicates a potentially hazardous situation which, if not avoided, **MAY** result in property damage



**MODEL NUMBER:** This number appears on sales literature, technical manuals and price lists.

**SERIAL NUMBER:** This number appears only on your mower. It contains the model number followed consecutively by the serial number. Use this number when ordering parts or seeking warranty information.

### GENERAL SAFETY

1. Read and understand the Owner's Manual before attempting to operate this machine.
2. Operate all controls from the operator's seat. **NO RIDERS.**
3. Keep all shields in place and safety switches adjusted properly.
4. Do not leave equipment unattended. **STOP** the engine and remove the key.
5. Do not allow minors or the inexperienced to operate this machine.
6. Keep people and pets a safe distance away from machine using power driven attachments. Injury could result from flying debris.

### OPERATING SAFETY

1. **DO NOT** attempt to work on unit or any attachments with the engine running. **STOP ENGINE!**

#### **WARNING**

The tractor may coast when the engine stops.

2. Before leaving the tractor seat:

- Disengage PTO.
- Set Parking Brake.
- Stop Engine.

### INSTRUCTIONS FOR MOUNTING ASSEMBLED CAB ON 220/230 TURF UNIT

**NOTE:** Detailed Cab Assembly Instructions are found in the assembly instructions found on Pages 7-16.

1. Turf Unit must be equipped with a roll bar.
2. Remove 3 roll bar mounting bolts on each side where the cab mounts.
3. With the cab doors removed, position the assembled cab into position around the roll bar.
4. Fasten the cab to the roll bar with the “U-type” clamps and 3/8 X 3 bolts. Install the front lower corners to the front fenders and dash side panels with 5/16 X 1/2 flange bolts.

**NOTE:** The top bolt of the dash side panel uses existing bolt (230 only). Model 220 needs holes drilled in the dash. See Page 9, Step 11.

5. Replace roll bar mounting bolts removed in step 2.
6. Install the cab doors and check for proper latch closure. Adjust latches as needed. See Page 13, Step 23 for adjustments.
7. Connect wiring for the wiper motor.

### INSTRUCTIONS FOR REMOVING ASSEMBLED CAB FROM 2 X 4 TURF UNIT

1. Disconnect wiring to wiper motor.
2. Remove the doors.
3. Remove the bolts at the front fenders and dash side panels.
4. Remove the 3 bolts that support the roll bar and cab on each side.
5. Remove the “U—type” clamps which clamp the cab to the roll bar.
6. Get an assistant to help and carefully lift the cab up and away from the roll bar.
7. The roll bar may remain on the turf unit.
8. Replace the bolts as needed with the cab removed.

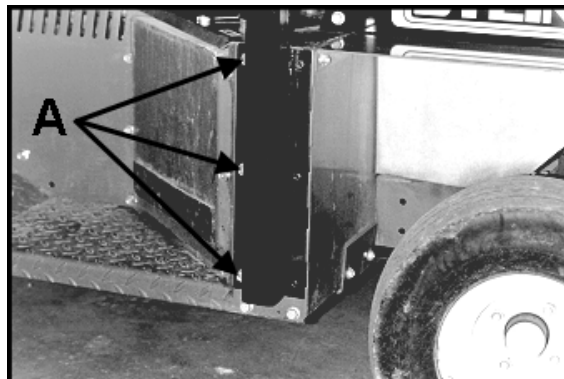


# TURF UNIT CAB

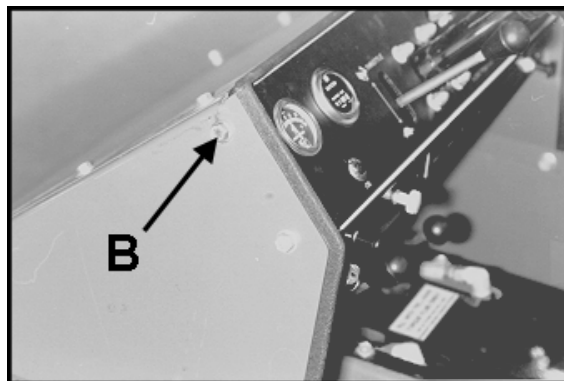
## ASSEMBLY INSTRUCTIONS

1. Have a ROPS approved roll bar and seat belt mounted to your tractor, using the roll bar instructions.

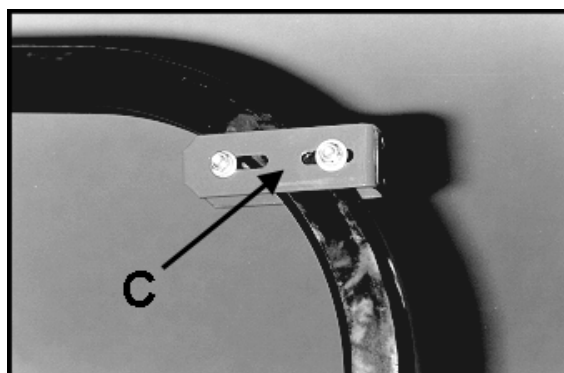
**NOTE:** Cab mounting uses 3 roll bar mounting bolts **A** on each side as shown.



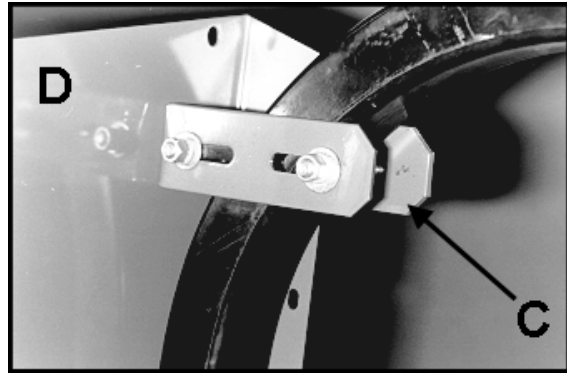
2. Disconnect battery.
3. Open the hardware package and sort the bolts and nuts according to size.
4. Facing the dashboard, remove the 3/8 flange bolts **B** at the top of the side panels, one from each side. (Model 230 only; Model 220 needs holes drilled in the dash. Refer to Step 11.)



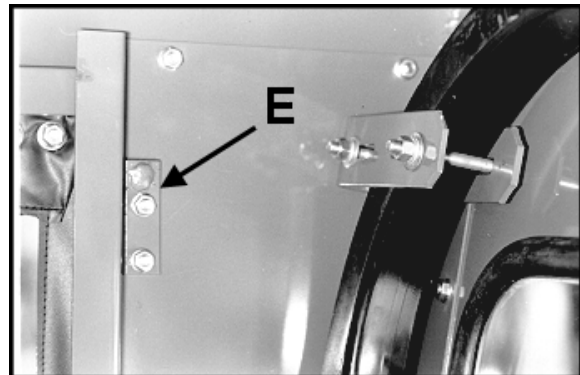
5. Do not completely tighten bolts in Steps 5-20. Cab will be aligned in Step 23.
6. Assemble the cab roll bar supports **C** using (4) 3/8 X 3" bolts. Place a 3/8 flat washer on each end of the bolt and loosely tighten with 3/8 nuts and lockwashers. Position the bracket so the closed end is facing to the side and away from the tractor as shown.



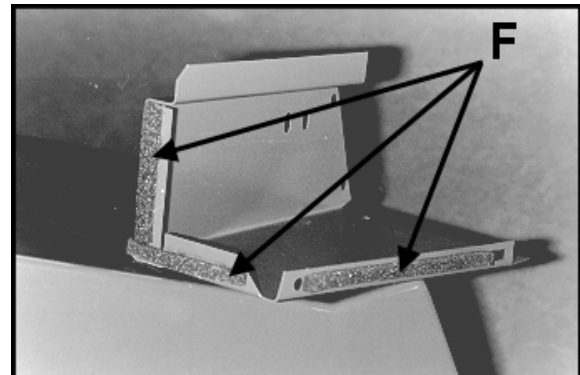
7. Install the rear side panels **D** aligning the 3 bottom holes with the bottom holes of the roll bar. Fasten using the (6) bolts remaining from the roll bar installation.
8. Position the roll bar supports **C** with the slots at the top of the side panels **D** and fasten with a 3/8 X 3/4 flange bolt and flange nut.



9. Install door hinge pins **E** to rear side panels by inserting pin in top hole until punched holes line up. Bolt together using 5/16 X 3/4 flange bolts and flange nuts.

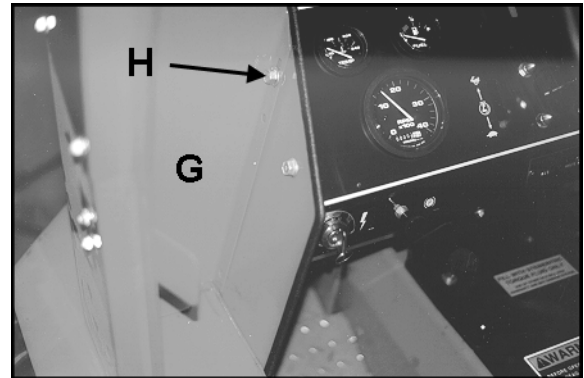


10. Cut and place self-adhesive foam strips **F** on the flanges of the front lower panels.



### MODEL 230

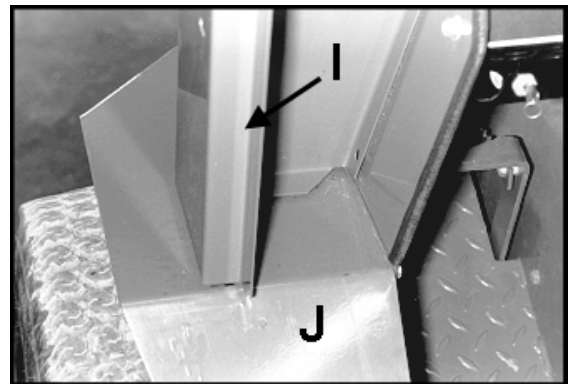
11. Position the front lower panels **G** on the front fenders. Insert the 3/8 bolts **G**, removed in Step 4 from the dashboard side panels, through the top of the front lower panel into the hole at the top of the dashboard side panel. Making sure the outer panel edge is flush and square with the bend in the fender, mark the lower hole position on the dashboard side panel. Remove the front lower panel and drill a 13/32" hole through the dashboard side panel where the lower hole position was marked.



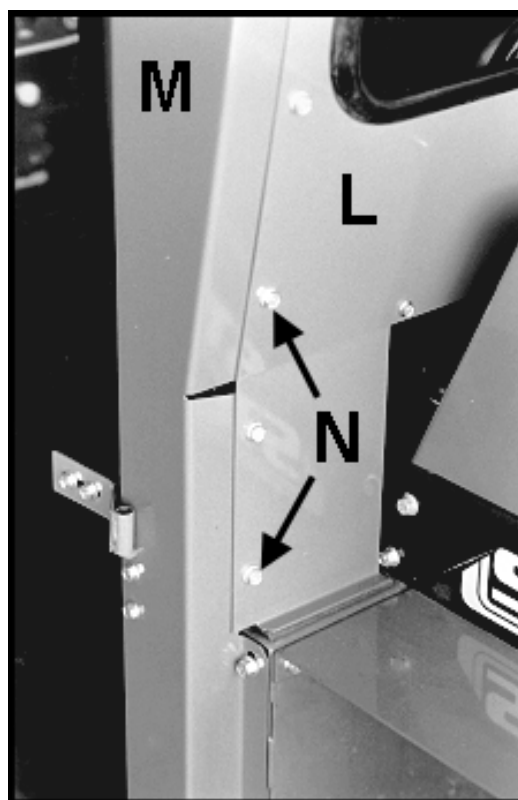
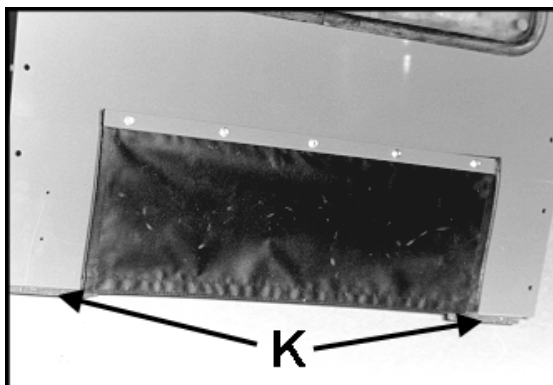
### MODEL 220

Line up the post **I** with the edge of the fender **J**. Making sure the post is square with the fender, mark and drill (2) 13/32" holes for the 3/8 bolts.

12. Reinstall the front lower panel using the 3/8 flange bolts in the top hole and 5/16 X 1/2 flange bolts in the lower hole.



13. Cut and place self-adhesive foam strips **K** on the bottom of the rear window panel as shown.
14. Fasten the rear window panel **L** to the side panels **M** using 5/16 X 1/2 flange bolts and nuts **N**. Do not tighten until Step 21. If seatbelt interferes, slide the plastic cover forward on the mounting bracket.

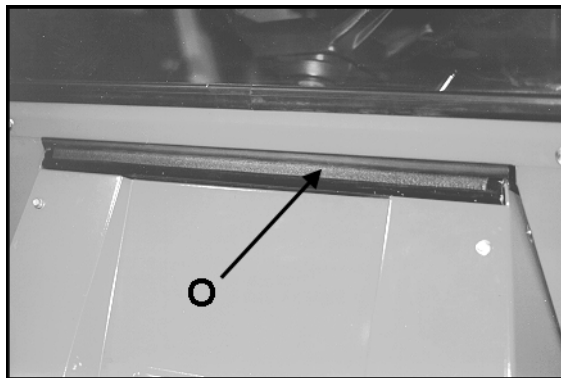


# TURF UNIT CAB

## ASSEMBLY INSTRUCTIONS

### MODEL 230

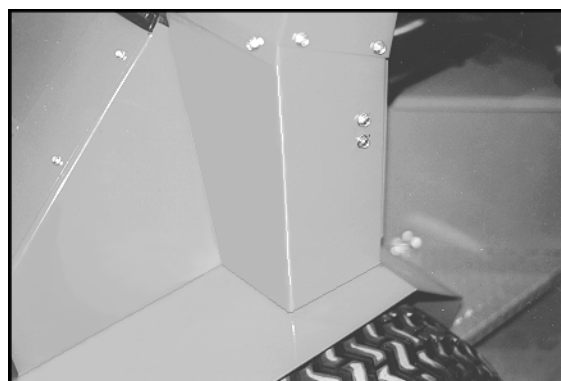
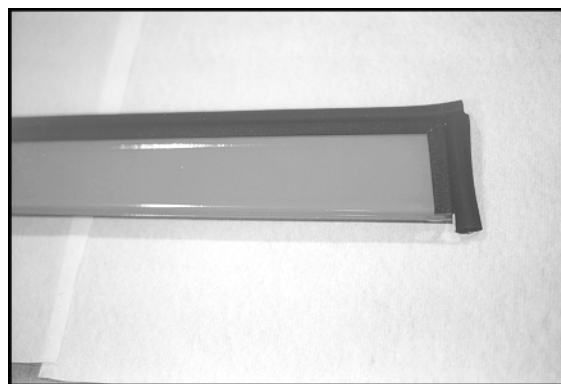
15. Cut trim **O** on dash at corners and remove.  
Replace with trim with bulb on top as shown.



### MODEL 220

16. Remove top bolts on hood.
17. Mount front window panel to lower front panels using 5/16 X 1/2 flange bolts and nuts.
18. Install trim on filler plate close to front of cab and tractor using trim with bulb on top as shown.

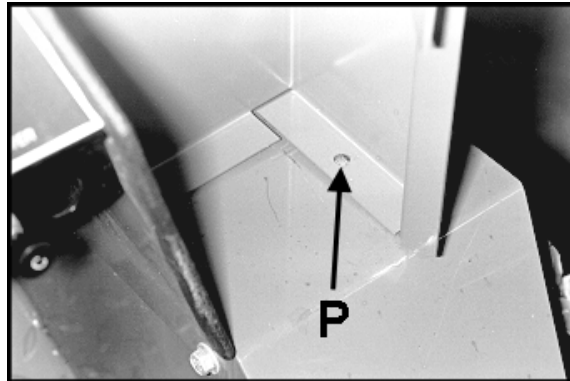
Use hood bolts to install plate to hood, to close the space between the cab and the tractor as shown.



19. Place the roof section down over rear side, rear window panels and front window panel as shown. Fasten with 5/16 X 1/2 flange bolts and nuts. Do not tighten at this time.

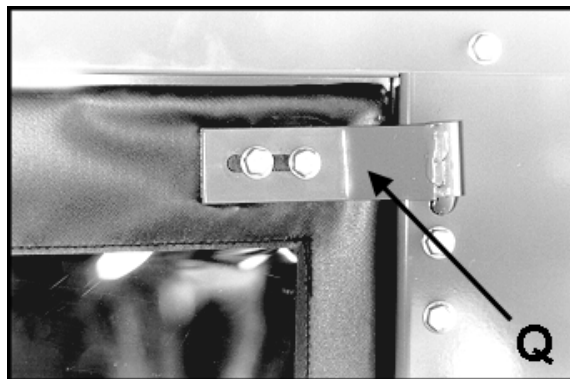


20. Mark and drill a 13/32" hole at location **P** through the remaining hole in the lower front panel and fasten to the fender with a 5/16 X 1/2 bolt.



21. Mount door hinges **Q** on doors as shown using 5/16 X 3/4 flange bolts, 1/4 flat washers and 5/16 flange nuts. You may want to tighten these bolts now, then loosen them later for adjustment.

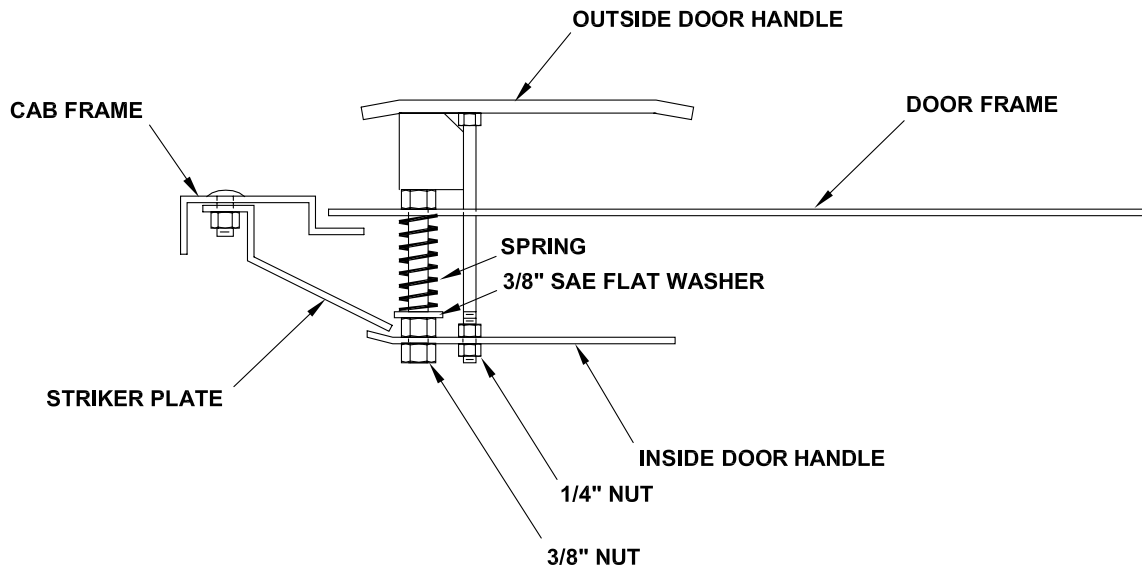
22. Mount door on hinges.



# TURF UNIT CAB

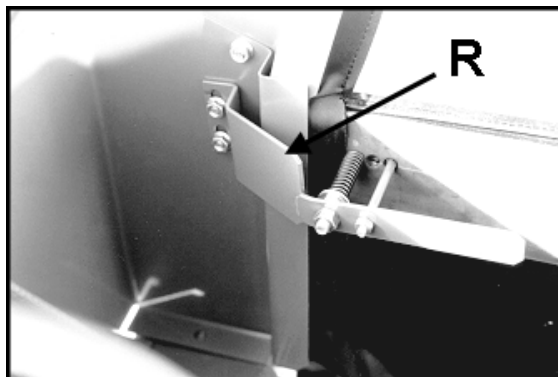
## ASSEMBLY INSTRUCTIONS

23. Now look at the alignment of the assembled cab. With all the bolts still loose you can move the panels to obtain a good fit around the door opening. Adjust door hinges and/or cab.
24. Tighten all bolts at this time.
25. Install door handle as shown in illustration below.





26. Mount striker plate **R** as shown. Adjust striker plate and latch so door will open and close freely.



27. With the door mounted and latched, draw the outline of the door in pencil. This will aid you in installing the weatherstrip along (3) sides of the opening as shown in Photo. A final adjustment of the striker plate and latch may be required after the weatherstrip is installed.

**NOTE:** Door may require bending slightly for best fit.





28. Mount the wiper above the windshield according to the wiper instructions. Check the wiper blade path so that it does not contact the rubber molding. Wiper position should be set at 85 degrees. Refer to the wiper instructions for position adjustment. Fasten the inline fuse to the auxiliary side of the circuit breaker and route the wire to the wiper.



### WWF WINDSHIELD WIPER INSTALLATION (Except 1000 Series)

1. Locate mounting position of wiper assembly.
2. Determine whether adequate space is available.
3. Locate approximate stud position on header. See that blade will wipe the desired area of windshield.
4. Should a change of wiping angle be needed:
  - a. Remove gear case cover.
  - b. Remove spring clip on pivot shaft arm.
  - c. Lift link and install in desired degrees on gear.
  - d. Reverse the above procedure to reassemble.Wiping angles available are 85, 100, 110, and 120 degrees.
5. Distance between stud hole and bracket hole should be 6.25 inches.
6. Drill tower stud hole first using a 5/8" drill.
7. Drill mounting bracket hole for a No. 10 screw.
8. Place the wiper in position and install the mounting stud attaching nut and washers. Tighten to 30-50 in. lbs.

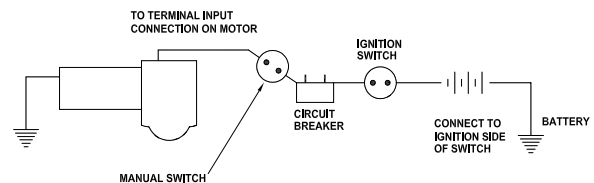
9. Wiring - See diagram. On applications where mounting is of wood, fiber, glass etc., a separate ground wire must be attached to the motor and connected to a battery ground point. A number 14 wire is recommended.

**NOTE:** Blade and arm should be mounted approximately 1" minimum away from windshield moulding. Make certain the wiper blade does not strike at either end of the wiping stroke. If blade strikes at both ends, it will be necessary to shorten the arm and blade length or reduce the wiping angle of the wiper.

#### MAXIMUM ARM AND BLADE RECOMMENDATION

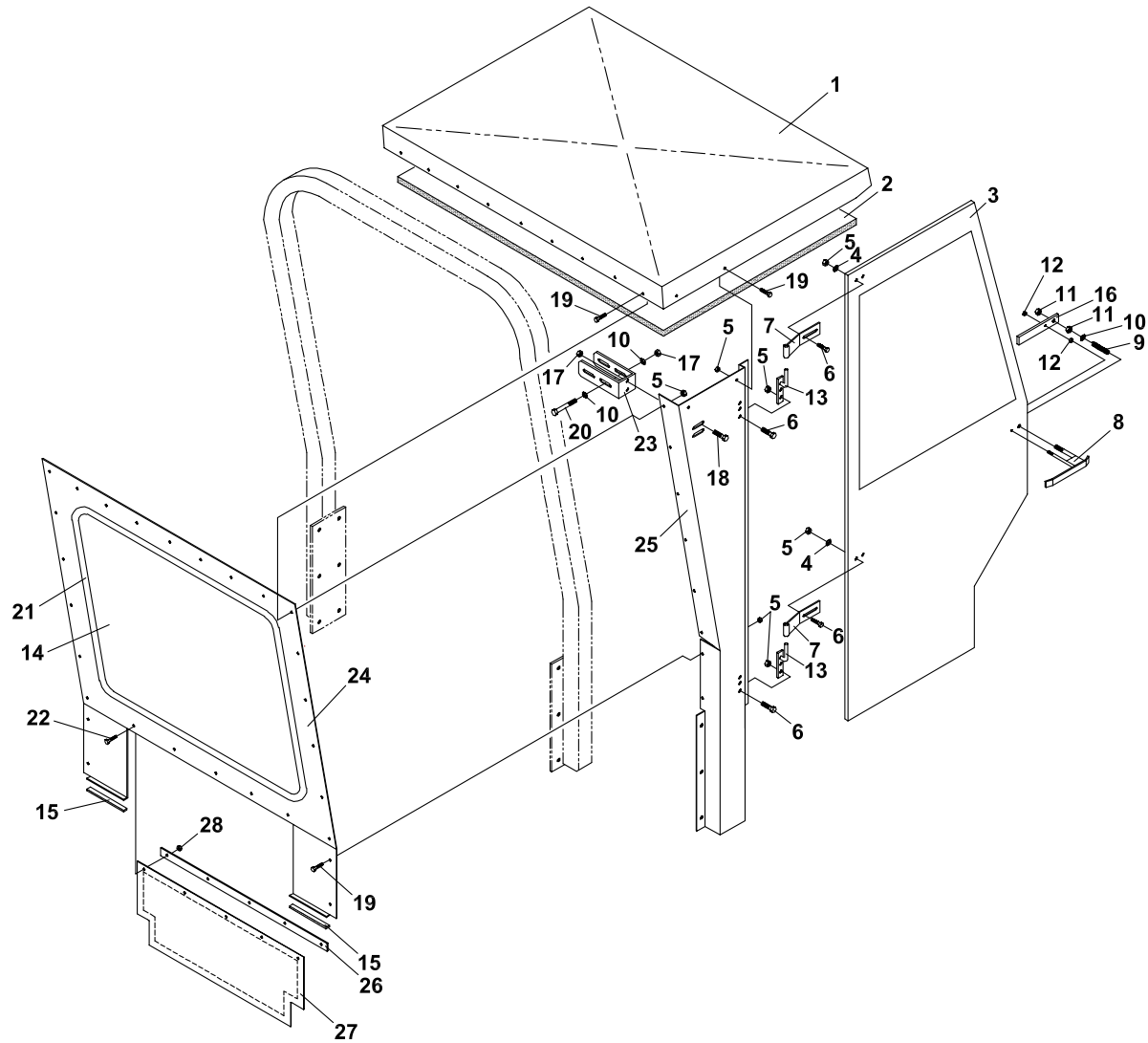
1 - 15" Arm

1 - 15" Blade



**Wiring Diagram for WWF Single Speed**

FIGURE 1



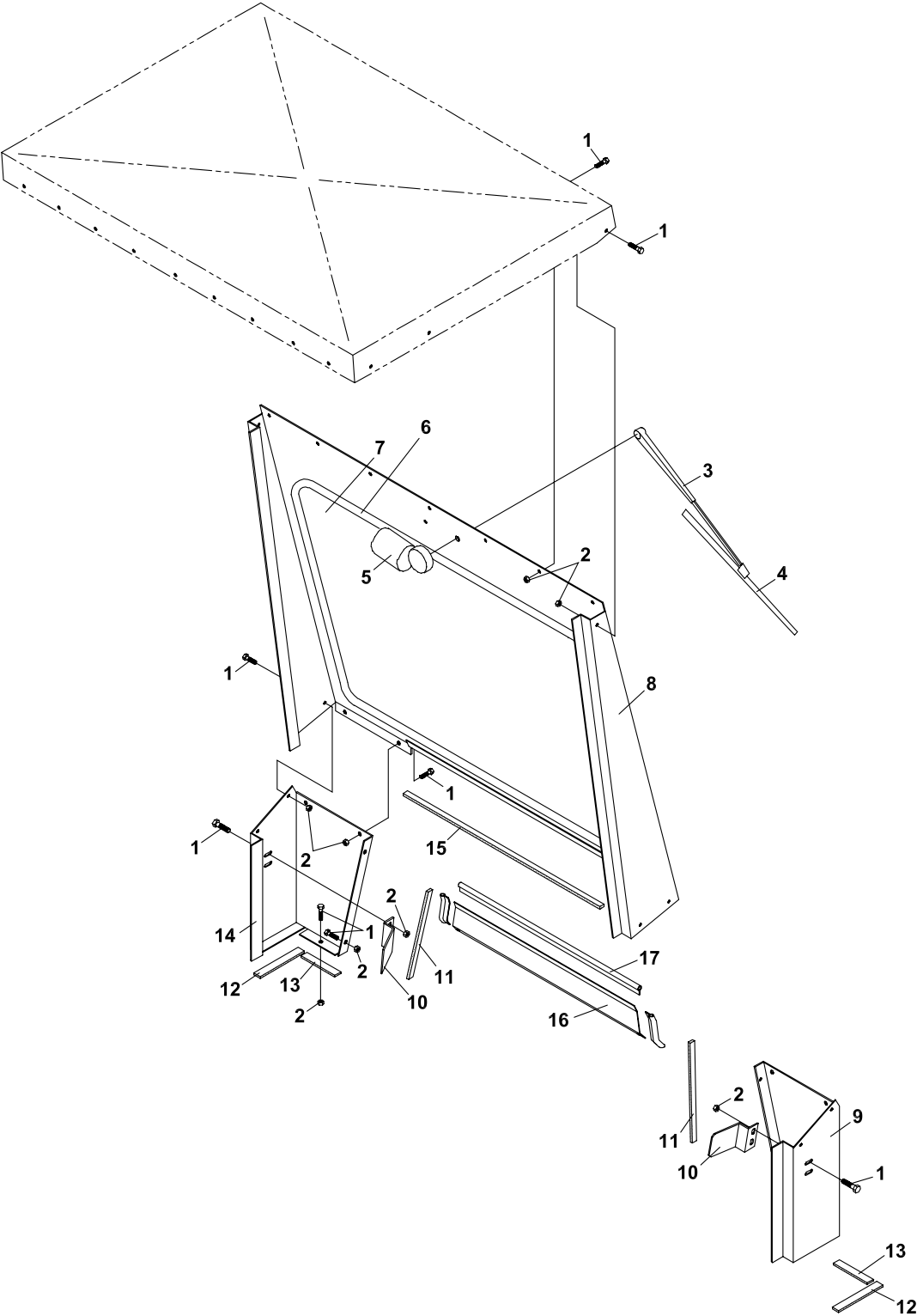
# TURF UNIT CAB

## CAB PARTS (1)

FIGURE 1

ITEM	PART NO.	DESCRIPTION	QTY	ITEM	PART NO.	DESCRIPTION	QTY
1-1	62-666	ROOF PANEL	1				
1-2	44-113	HEADLINER	1				
1-3	62-674	DOOR-RIGHT	1				
	62-673	DOOR-LEFT	1				
	56-052-102	FOAM WEATHERSTRIP 102" (USE 2 PER DOOR)	4				
1-4	64163-55	WASHER .328X.75X14	8				
1-5	64141-6	NUT, 5/16-18	42				
1-6	64139-08	BOLT-5/16-18X3/4	16				
1-7	64-580	DOOR HINGE	4				
1-8	64-342	DOOR HANDLE-OUTSIDE	2				
1-9	41-021	COMPRESSION SPRING	2				
1-10	64163-61	WSHR .81X.406X16	10				
1-11	64025-05	NUT-3/8-16 HEX	4				
1-12	64025-01	NUT-1/4-20 HEX	4				
1-13	64-340	DOOR HINGE PIN	4				
1-14	06-036	REAR WINDSHIELD GLASS	1				
1-15	56-052-06	FOAM STRIP-6"	2				
1-16	64-566	LATCH-DOOR INSIDE HNDL	2				
1-17	64141-4	NUT-WLF 3/8-16	8				
1-18	64139-21	BLT-WLF 3/8-16X3/4	4				
1-19	64139-13	BLT-WLF 5/16-18X1/2	26				
1-20	64123-75	BOLT, 3/8-16X3 HEX	4				
1-21	57-009-107	WINDSHIELD MOLDING-107"	1				
1-22	64139-02	BLT-WLF 1/4-20X1/2	5				
1-23	64-546	MOUNTING BRACKET	2				
1-24	62-670	PANEL-REAR	1				
1-25	62-668	SIDE PANEL-RIGHT	1				
	62-667	SIDE PANEL-LEFT	1				
1-26	64-565	RETAINER STRAP-REAR	1				
1-27	44-110	FABRIC PANEL-REAR	1				
1-28	64141-2	NUT-WLF 1/4-20	5				

FIGURE 2



# TURF UNIT CAB

## CAB PARTS (2)

FIGURE 2

ITEM	PART NO.	DESCRIPTION	QTY	ITEM	PART NO.	DESCRIPTION	QTY
2-1	64139-13	BLT-WLF 5/16-18X1/2	26				
2-2	64141-6	NUT, 5/16-18	26				
2-3	35-054	WINDSHLD WIPER ARM	1				
2-4	35-055	WINDSHLD WIPER BLADE	1				
2-5	35-053	MOTOR-WINDSHLD WIPER	1				
2-6	57-009-123	WINDSHLD MOLDING-123"	1				
2-7	06-035	FRONT WINDSHLD GLASS	1				
2-8	62-669	PANEL-FRONT	1				
	(SN 1001 - 1044)						
	60-667	PANEL-FRONT	1				
	(SN 1045 - )						
2-9	62-672	PANEL-LWR RIGHT	1				
	(SN 1001 - 1044)						
	60-668	PANEL-LWR RIGHT	1				
	(SN 1045 - )						
2-10	64-567	STRIKER PLATE	2				
2-11	56-052-12	FOAM STRIP-12"	2				
2-12	56-052-06	FOAM STRIP-6"	2				
2-13	56-052-05	FOAM STRIP-5"	2				
2-14	62-671	PANEL-LWR LEFT	1				
	(SN 1001 - 1044)						
	60-669	PANEL-LWR LEFT	1				
	(SN 1045 - )						
2-15	56-052-24	FOAM STRIP-24"	1				
(THE FOLLOWING ITEMS ARE USED ON MODEL 220 ONLY)							
2-16	60-670	CAB FRONT PANEL EXT	1				
	(SN 1045 - )						
2-17	56-068-30	TRIM SEAL-30"	1				
	(SN 1045 - )						
*	64141-4	NUT-WLF 3/8-16	2				
	(SN 1045 - )						
*	64139-21	BLT-WLF 3/8-16X3/4	2				
	(SN 1045 - )						

## **World Class Quality, Performance And Support**



Equipment from Jacobsen, a Textron company, is built to exacting standards ensured by ISO 9001 and ISO 14001 registration at all our manufacturing locations.

A worldwide dealer network and factory-trained technicians backed by Textron Parts Xpress provide reliable, high-quality product support.



---

***BOB-CAT BROWER BUNTON CUSHMAN RYAN STEINER***