

# OWNER/OPERATOR'S MANUAL & ILLUSTRATED PARTS LIST

---

## MODEL:

**73-70605A      LOADER FRONT END LD300**



*WARNING: If incorrectly used this machine can cause severe injury. Those who use and maintain this machine should be trained in its proper use, warned of its dangers and should read the entire manual before attempting to set up, operate, adjust or service the machine.*



**4132502 REV B**

**CALIFORNIA**  
**Proposition 65 Warning**

Diesel engine exhaust and some of its constituents are known to the State of California to cause cancer, birth defects and other reproductive harm.



**WARNING**

The engine exhaust from this product contains chemicals known to the State of California to cause cancer, birth defects or other reproductive harm.

**Californie Proposition 65**  
**Avertissement**

Les échappements des moteurs diesel et certains de leurs composés sont reconnus par l'Etat de Californie pour être cancérigènes, provoquer des défauts congénitaux et d'autres dangers en matière de reproduction.



**AVERTISSEMENT**

L'émission du moteur de ce matériel contient des produits chimiques que l'Etat de Californie considère être cancérigènes, provoquer des défauts congénitaux et d'autres dangers en matière de reproduction.

**California Advertencia**  
**de la Proposicion 65**

El estado de California hace saber que los gases de escape de los motores diesel y algunos de sus componentes producen cáncer, defectos de nacimiento y otros daños en el proceso de reproducción humana.



**ADVERTENCIA**

El estado de California hace saber que los gases de escape de este producto contienen productos químicos que producen cáncer, defectos de nacimiento y otros daños en el proceso de reproducción humana.

# LOADER LD300

## IMPORTANT MESSAGE

Thank you for purchasing this Jacobsen product. You have purchased a world class product, one of the best designed and built anywhere.

This product comes with an Owner/Operator's Manual. The useful life and good service you receive from this product depends to a large extent on how well you read and understand this manual. Treat this product properly and adjust it as instructed, and it will give you many years of reliable service.

See a Jacobsen dealer for any service or parts needed. Jacobsen service ensures that you continue to receive the best results possible from Jacobsen products. You can trust Jacobsen replacement parts because they are manufactured with the same high precision and quality as the original parts.

Jacobsen designs and builds its equipment to serve many years in a safe and productive manner. For longest life, use this product only as directed in the manual, keep it in good repair and follow safety warnings and instructions. You'll always be glad you did.

**Jacobsen, a Textron Company**  
**One Bob Cat Lane**  
**Johnson Creek, WI 53038-0469**

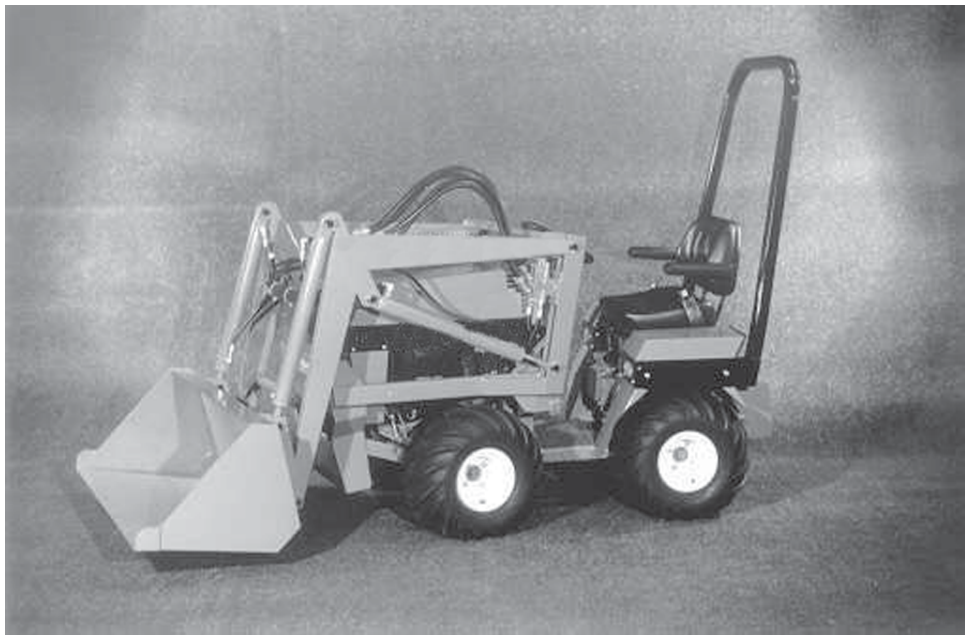
TABLE OF CONTENTS	FIGURES	PAGE
DESCRIPTION / SPECIFICATIONS .....		2
SAFETY .....		3, 4
INSTALLATION INSTRUCTIONS .....		5
OPERATION .....		6
SERVICE .....		7
FRAME PARTS .....	FIGURE 1 .....	8, 9
HYDRAULICS .....	FIGURE 2 .....	10, 11

DESCRIPTION

The front end Loader is designed exclusively for use with the 420 tractor. The quick attach feature is very desirable for owners who use the tractor for various jobs.

Standard equipment is the 48" bucket. A weight bar with 6 weights is required for use with the loader.

Uses include material handling of bulky materials, manures, gravel, sand etc. with excellent maneuverability and ease of handling. The 4 wheel-drive allows the small unit to perform tasks surpassing other small loaders.



SPECIFICATIONS

Lift Height .....	73"
Maximum lift capacity .....	200 lbs.
Break-out Force .....	365 lbs.
Clearance with attachment dumped .....	53"
Reach at full height .....	30"
Reach with attachment on ground .....	27"
Overall height in carry position .....	49"
Rated pressure at 3600 engine rpm .....	750 psi
Pump Flow at 3600 engine rpm .....	7.8 gpm
Oil Capacity .....	2-1/2 gal.
Cylinder size .....	2 X 20
Bucket rollback .....	15°
Bucket volume .....	6 cu. ft. (approx.)
Bucket width .....	48"
Weight .....	702 lbs.

### NOTICE !!!

Unauthorized modifications may present **extreme** safety hazards to operators and bystanders and could also result in product damage.

Jacobsen, a Textron Company strongly warns against, rejects and disclaims any modifications, add-on accessories or product alterations that are not designed, developed, tested and approved by Jacobsen Engineering Department. Any Jacobsen product that is altered, modified or changed in any manner not specifically authorized after original manufacture—including the addition of “after-market” accessories or component parts not specifically approved by Jacobsen—will result in the Jacobsen Warranty being voided.

Any and all liability for personal injury and/or property damage caused by any unauthorized modifications, add-on accessories or products not approved by Jacobsen will be considered the responsibility of the individual(s) or company designing and/or making such changes. Jacobsen will vigorously pursue full indemnification and costs from any party responsible for such unauthorized post-manufacture modifications and/or accessories should personal injury and/or property damage result.



This symbol means:  
**ATTENTION!**  
**BECOME ALERT!**

Your safety and the safety of others is involved.

### Signal word definitions:

The signal words below are used to identify levels of hazard seriousness. These words appear in this manual and on the safety labels attached to Jacobsen machines. For your safety and the safety of others, read and follow the information given with these signal words and/or the symbol shown above.

#### **DANGER**

**DANGER** indicates an imminently hazardous situation which, if not avoided, **WILL** result in death or serious injury.

#### **WARNING**

**WARNING** indicates a potentially hazardous situation which, if not avoided, **COULD** result in death or serious injury.

#### **CAUTION**

**CAUTION** indicates a potentially hazardous situation which, if not avoided, **MAY** result in minor or moderate injury. It may also be used to alert against unsafe practices or property damage.

#### **CAUTION**

**CAUTION** used without the safety alert symbol indicates a potentially hazardous situation which, if not avoided, **MAY** result in property damage



**MODEL NUMBER:** This number appears on sales literature, technical manuals and price lists.

**SERIAL NUMBER:** This number appears only on your mower. It contains the model number followed consecutively by the serial number. Use this number when ordering parts or seeking warranty information.

## GENERAL SAFETY

1. Read and understand the Owner's Manual before attempting to operate this machine.
2. Operate all controls from the operator's seat. **NO RIDERS.**
3. Keep all shields in place and safety switches adjusted properly.
4. Do not leave equipment unattended. **STOP** the engine and remove the key.
5. Do not allow minors or the inexperienced to operate this machine.
6. Keep people and pets a safe distance away from machine using power driven attachments. Injury could result from flying debris.

## OPERATING SAFETY

1. **DO NOT** attempt to work on unit or any attachments with the engine running. **STOP ENGINE!**
2. **DO NOT** exceed recommended loads.
3. Always carry the load low.
4. Before leaving the operator's seat:
  - **Disengage PTO drive.**
  - **Set Parking brake.**
  - **Lower bucket.**
  - **Stop Engine.**

### MOUNTING INSTRUCTIONS

1. Install mounting shaft through tractor frame and secure with bolt. Place clamp over each end of shaft.
2. Drive tractor carefully into position until the front lift latches.
3. Raise tractor front lift to tilt loader onto mounting shaft.
4. Place clamps in position and tighten.
5. Install pump drive belt.
6. Install weight bar and 6 weights.

### REMOVAL INSTRUCTIONS

1. Raise bucket approximately 20" from the floor.
2. Loosen clamps to mounting shaft.
3. Stop engine and remove pump drive belt.
4. Carefully lower tractor front lift, allowing loader to tip forward until bucket rests on floor.
5. Release quick attach and carefully back tractor away from loader.
6. Block or support frame of loader in case of accidental movement of control levers which will affect the position of the loader for re-mounting.
7. Remove mounting shaft if desired.
8. Remove weights from weight bar.

## OPERATING INSTRUCTIONS

1. **SAFETY FIRST!** Always carry the load low.
2. Drive very carefully over rough terrain.
3. **REMEMBER** when raising the loader it increases the chances of tipping over due to the weight and its effect upon the center of gravity.
4. With the tractor engine running, engage PTO to start pump.
5. Operate valve levers carefully. The left lever raises and lowers the loader. This lever has a float position also. The right lever controls the bucket position.

### **CAUTION**

**Always remove weights from weight bar when loader is removed.**



### MAINTENANCE INSTRUCTIONS

1. Check oil level with all cylinders retracted. Oil level should reach the notch on the dipstick.
2. Lubrication:
  - Use TRC 6440 oil only.
  - Grease every 8 hours of operation.

### TROUBLE SHOOTING CHART

#### POSSIBLE CAUSE

#### REMEDY

#### **SYMPTOM: Loader will not lift.**

- |   |   |
|---|---|
| 1. Pump drive belt slipping or missing. | 1. Check pump drive belt for correct size and adjustment.           |
| 2. Low oil level.                       | 2. Fill to proper oil level with cylinders retracted.               |
| 3. Load in bucket is too heavy.         | 3. Do not exceed maximum recommended transport loads of 200 pounds. |

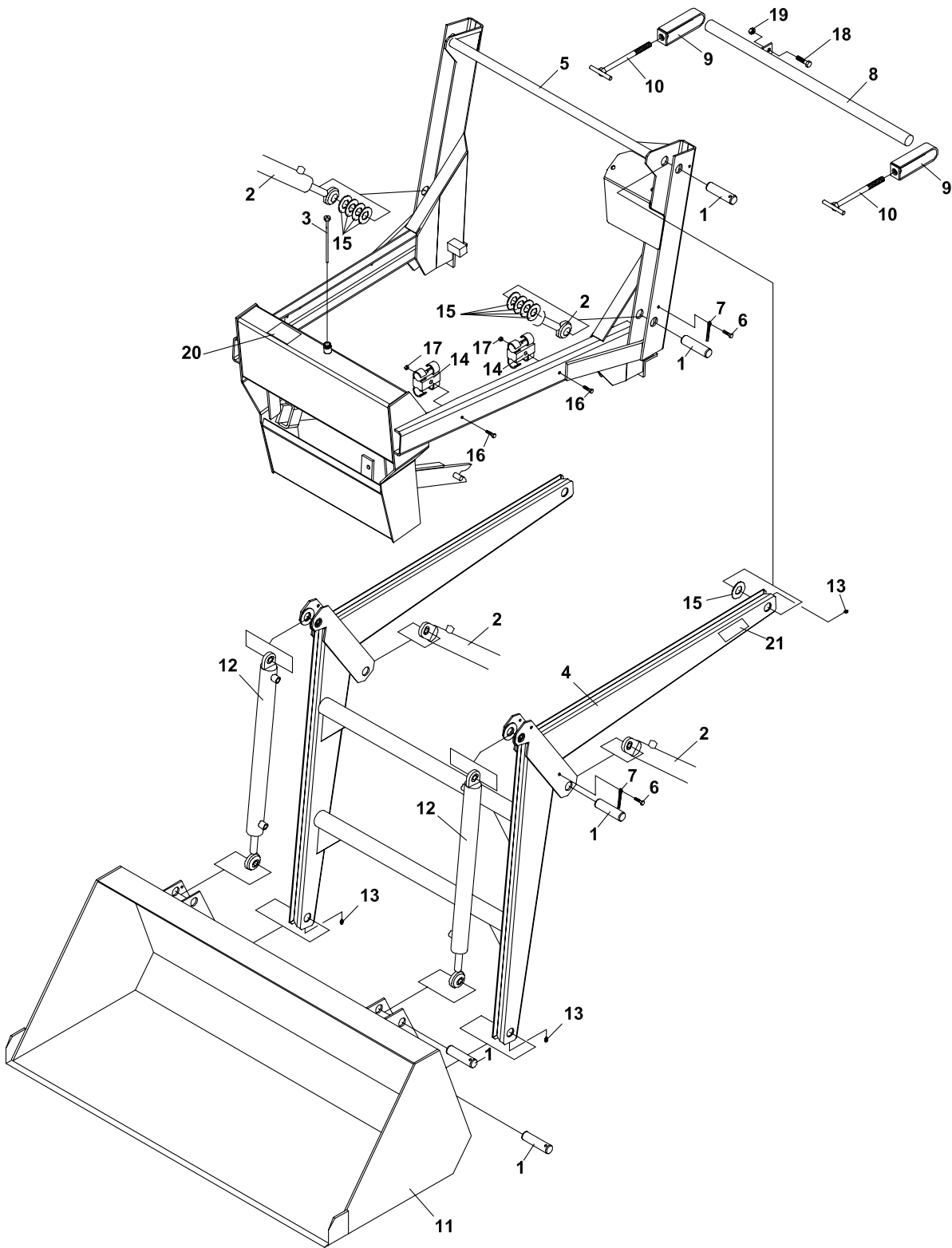
#### **SYMPTOM: Loader leaks down or settles with load.**

- |                               |  |
|-------------------------------|--|
| 1. Lift cylinders leaking.    | 1. Replace cylinder seals.                                     |
| 2. Hydraulic valve leaking.   | 2. Replace seals in hydraulic valve or replace valve assembly. |
| 3. Hoses or fittings leaking. | 3. Repair or replace leaking hoses or fittings.                |

#### **SYMPTOM: Oil sprays or leaks at filler cap.**

- |                               |   |
|-------------------------------|---|
| 1. Oil reservoir is too full. | 1. Do not over-fill. Always check oil level with loader down and bucket rolled back with all cylinders retracted. |
|-------------------------------|---|

FIGURE 1



# LOADER LD300

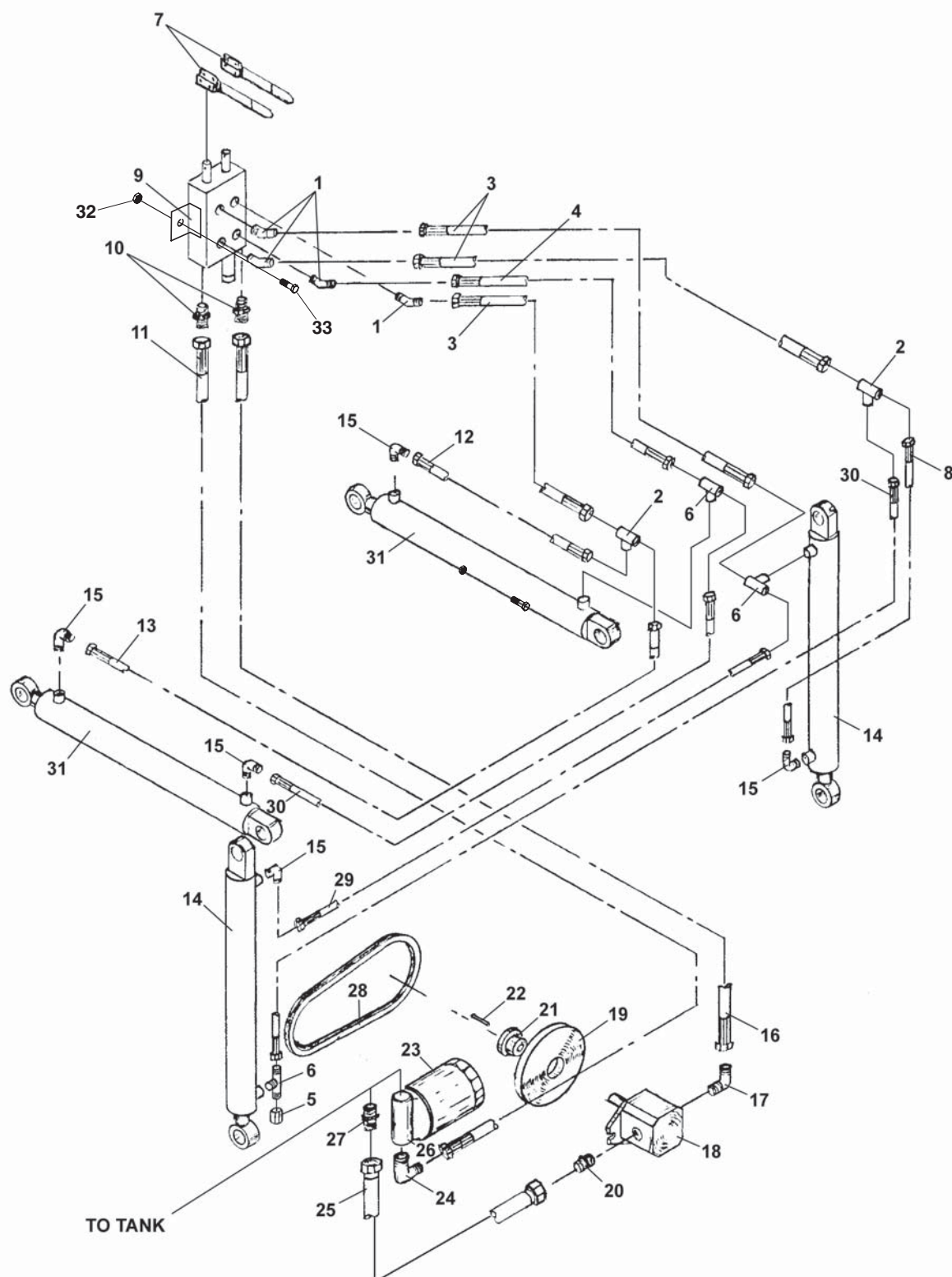
## FRAME PARTS

FIGURE 1

ITEM	PART NO.	DESCRIPTION	QTY	ITEM	PART NO.	DESCRIPTION	QTY
1-1	64-116	PIN	12				
1-2	23-015	CYL	2				
1-3	24-029	DIPSTICK, LOADER 5"	1				
1-4	4132518.7	BOOM FRAME	1				
1-5	4132514.7	SUB-FRAME	1				
1-6	99-C0406	SCREW	12				
1-7	64140-15	COTTER PIN	12				
1-8	80-122	SHAFT, MOUNTING	1				
1-9	64-428.7	CLAMP,LDR MOUNT	2				
1-10	64-429	BOLT,LDR CLAMP	2				
1-11	4132719.7	BUCKET	1				
	70-107	CUTTING EDGE REP KIT	1				
1-12	23-016	CYL, 2 X 20 SIDE PORT	2				
1-13	29-010	S/B GREASE FITTING	4				
1-14	4134161	TUBE AND HOSE CLMP 1/4"	2				
1-15	64163-84	WSR-1.015X1.75X.12510					
1-16	64152-61	8-32 X 1 1/4 MACH SCREW	2				
1-17	64025-29	NUT-HEX #8-32 KEPS	2				
1-18	64123-50	BOLT-HEX 3/8-16X1	1				
1-19	64141-4	NUT-WLF 3/8-16	5				
1-20	202525	DECAL, CAUTION RD MAN	1				
1-21	00-282	DECAL, CLS CLEAR AREA	2				
*	00-031	DECAL-HYDRAULIC OIL	1				
*	4116761	LABEL-MADE IN USA	1				

\* NOT ILLUSTRATED

FIGURE 2



# LOADER LD300

## HYDRAULICS

FIGURE 2

ITEM	PART NO.	DESCRIPTION	QTY	ITEM	PART NO.	DESCRIPTION	QTY
2-1	25-3503-6-6	FITTING-45	4				
2-2	4132485	BULKHEAD TEE	2				
2-3	20-035	HOSE-3/8 X 40	3				
2-4	4132458	HOSE-3/8 X 30	1				
2-5	25-06CP-6	FITTING-CAP	1				
2-6	25-213T-6-6	FITTING-TEE	3				
2-7	23-030	HANDLE, VALVE MPV	2				
2-8	20-027	HOSE-1/4 X 22	1				
2-9	23-017	VALVE-RELIEF	1				
2-10	25-0503-6-8	FITTING-STR	2				
2-11	20-033	HOSE, 3/8 X 56 100R2 #8 JIC	1				
2-12	4132468	HOSE-1/4 X 33	1				
2-13	4132470	HOSE-1/4 X 62	1				
2-14	23-016	CYLINDER	2				
	21-0A001665	SEAL KIT FOR CYL	1				
2-15	25-2103-6-6	FITTING-90	5				
2-16	20-032	HOSE-3/8 X 48	1				
2-17	25-2503-8-8	FITTING-90	1				
2-18	21-011	BARNES PUMP .5 CU. IN.	1				
2-19	83-BK60H	PULLEY, FOR 60" DECK (INCLUDES ITEM 22)	1				
2-20	25-0503-10-10	FITTING-STR	1				
2-21	23-H08	BUSHING	1				
2-22	85-K0208	KEY	1				
2-23	21-093	FILTER-HYDRAULIC	1				
2-24	25-2103-12-8	FITTING-90	1				
2-25	22-007	HOSE, PUSH LOCK 5/8 X 12	1				
2-26	21-057	FILTER HEAD	1				
2-27	25-0103-8-10	FITTING-STR	1				
2-28	81-A026	BELT, A26	1				
2-29	4132463	HOSE-1/4 X 40	1				
2-30	4132469	HOSE-1/4 X 44	2				
2-31	23-015	CYLINDER, 2 X 20 REGULAR	2				
	21-0A001665	SEAL KIT FOR CYLINDER	1				
2-32	64141-4	NUT-WLF 3/8-162	2				
2-33	64123-15	BOLT-3/8-16X3/4 HEX	2				

## **World Class Quality, Performance And Support**



Equipment from Jacobsen, a Textron company, is built to exacting standards ensured by ISO 9001 and ISO 14001 registration at all our manufacturing locations.

A worldwide dealer network and factory-trained technicians backed by Textron Parts Xpress provide reliable, high-quality product support.



---

***BOB-CAT BROWER BUNTON CUSHMAN RYAN STEINER***