

OWNER/OPERATOR'S MANUAL & ILLUSTRATED PARTS LIST

MODEL:

73-70560 PALLET MOVER PM400



WARNING: If incorrectly used this machine can cause severe injury. Those who use and maintain this machine should be trained in its proper use, warned of its dangers and should read the entire manual before attempting to set up, operate, adjust or service the machine.



09-382 REV A

CALIFORNIA
Proposition 65 Warning

Diesel engine exhaust and some of its constituents are known to the State of California to cause cancer, birth defects and other reproductive harm.



WARNING

The engine exhaust from this product contains chemicals known to the State of California to cause cancer, birth defects or other reproductive harm.

Californie Proposition 65
Avertissement

Les échappements des moteurs diesel et certains de leurs composés sont reconnus par l'Etat de Californie pour être cancérigènes, provoquer des défauts congénitaux et d'autres dangers en matière de reproduction.



AVERTISSEMENT

L'émission du moteur de ce matériel contient des produits chimiques que l'Etat de Californie considère être cancérigènes, provoquer des défauts congénitaux et d'autres dangers en matière de reproduction.

California Advertencia
de la Proposicion 65

El estado de California hace saber que los gases de escape de los motores diesel y algunos de sus componentes producen cáncer, defectos de nacimiento y otros daños en el proceso de reproducción humana.



ADVERTENCIA

El estado de California hace saber que los gases de escape de este producto contienen productos químicos que producen cáncer, defectos de nacimiento y otros daños en el proceso de reproducción humana.

PALLET MOVER

IMPORTANT MESSAGE

Thank you for purchasing this Jacobsen product. You have purchased a world class product, one of the best designed and built anywhere.

This product comes with an Owner/Operator's Manual. The useful life and good service you receive from this product depends to a large extent on how well you read and understand this manual. Treat this product properly and adjust it as instructed, and it will give you many years of reliable service.

See a Jacobsen dealer for any service or parts needed. Jacobsen service ensures that you continue to receive the best results possible from Jacobsen products. You can trust Jacobsen replacement parts because they are manufactured with the same high precision and quality as the original parts.

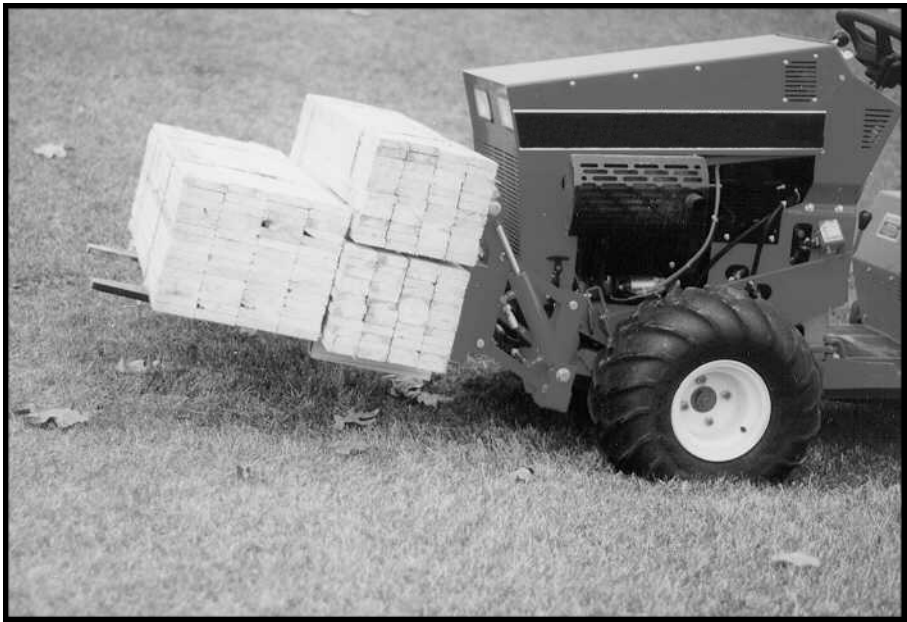
Jacobsen designs and builds its equipment to serve many years in a safe and productive manner. For longest life, use this product only as directed in the manual, keep it in good repair and follow safety warnings and instructions. You'll always be glad you did.

Jacobsen, a Textron Company
One Bob Cat Lane
Johnson Creek, WI 53038-0469

TABLE OF CONTENTS	FIGURES	PAGE
INTRODUCTION / SPECIFICATIONS		2
SAFETY		3, 4
INSTALLATION / OPERATION		5
FRAME & FORKS ASSY	FIGURE 1	6, 7
HITCH PARTS	FIGURE 2	8, 9

DESCRIPTION

The Pallet Mover attachment mounts on the Quick-Hitch front lift of Steiner power units. On or off in a minute or less, it is a quick, inexpensive way to move small pallets from one location to another in warehouses, storage barns, or sales lots. Twin hydraulic cylinders tilt the forks to adjust for level loads. Forks have adjustable width positioning, are self leveling, and will carry loads up to 400 pounds.



SPECIFICATIONS

Overall Width	33"
Overall Length	50"
Overall Height	17"
Forks	30" long, 4" wide. 3/4" thick (hot rolled steel)
Fork Spacing	4" to 28" (center to center)
Lift Height	8.5" (forks level)
	14" (forks tilted)
Lift Capacity	400 lbs.
Tilt Angle	14 degrees up
	9 degrees down (ground level)
Weight.....	170 lbs.

These specifications are subject to change without notice.

NOTICE !!!

Unauthorized modifications may present **extreme** safety hazards to operators and bystanders and could also result in product damage.

Jacobsen, a Textron Company strongly warns against, rejects and disclaims any modifications, add-on accessories or product alterations that are not designed, developed, tested and approved by Jacobsen Engineering Department. Any Jacobsen product that is altered, modified or changed in any manner not specifically authorized after original manufacture—including the addition of “after-market” accessories or component parts not specifically approved by Jacobsen—will result in the Jacobsen Warranty being voided.

Any and all liability for personal injury and/or property damage caused by any unauthorized modifications, add-on accessories or products not approved by Jacobsen will be considered the responsibility of the individual(s) or company designing and/or making such changes. Jacobsen will vigorously pursue full indemnification and costs from any party responsible for such unauthorized post-manufacture modifications and/or accessories should personal injury and/or property damage result.



This symbol means:
ATTENTION!
BECOME ALERT!

Your safety and the safety of others is involved.

Signal word definitions:

The signal words below are used to identify levels of hazard seriousness. These words appear in this manual and on the safety labels attached to Jacobsen machines. For your safety and the safety of others, read and follow the information given with these signal words and/or the symbol shown above.

DANGER

DANGER indicates an imminently hazardous situation which, if not avoided, **WILL** result in death or serious injury.

WARNING

WARNING indicates a potentially hazardous situation which, if not avoided, **COULD** result in death or serious injury.

CAUTION

CAUTION indicates a potentially hazardous situation which, if not avoided, **MAY** result in minor or moderate injury. It may also be used to alert against unsafe practices or property damage.

CAUTION

CAUTION used without the safety alert symbol indicates a potentially hazardous situation which, if not avoided, **MAY** result in property damage



MODEL NUMBER: This number appears on sales literature, technical manuals and price lists.

SERIAL NUMBER: This number appears only on your mower. It contains the model number followed consecutively by the serial number. Use this number when ordering parts or seeking warranty information.

GENERAL SAFETY

- Read and understand the owner’s manual, before attempting to operate this machine.
- Operate all controls from the operator’s seat, (if so equipped). **NO RIDERS.**
- Keep all shields in place and safety switches adjusted properly.
- Do not leave equipment unattended. STOP the engine and remove the key (if so equipped).
- Do not allow minors or the inexperienced to operate this machine.
- Never allow anyone to operate or service this machine while under the influence of alcohol or drugs.
- Keep people and pets a safe distance away from machines using power driven attachments. Injury could result from flying debris.
- Wear all the necessary protective clothing and personal safety devices to protect your head, eyes, ears, hands, and feet.
- Operate the machine only in daylight or in good artificial light.

OPERATING SAFETY

Do not attempt to work on unit or any attachments with engine running! **STOP ENGINE.**

⚠ WARNING

The tractor may coast when the engine stops. Set parking brake locks.



LOCATION: HYDRAULIC CYLINDERS

BEFORE LEAVING THE TRACTOR SEAT:

1. Disengage PTO Drive.
2. Set Parking Brake.
3. Stop Engine.

⚠ CAUTION

CARRY LOADS LOW AND AVOID QUICK, SHARP TURNS. A REAR WEIGHT BAR IS REQUIRED WITH WEIGHTS EQUAL TO HALF OF THE PALLET LOAD.

ATTACHING THE PALLET MOVER

- Attach the pallet mover to the quick-hitch in the usual manner.
- Attach the hydraulic hoses to the quick-couplers. Route the hoses in a place where they will not be damaged. If the hydraulic lever movement seems backward, reverse the hoses at the quick-couplers.

OPERATING THE PALLET MOVER

Controls

- The front lift hydraulic lever controls tilt.
- The auxiliary hydraulic lever lifts the load.

Loading the Forks

- Install weights on the rear weight bar equal to half of the pallet weight to be moved. Example: a 400 lb. load requires 200 lbs. of weights (4 weights).
- Set the fork spacing before trying to load a pallet by removing the quick release pin(s) **A** and sliding the fork(s) **B** to the proper spacing. Replace pin(s) **A**.
- Lower the forks to the ground and level them by using the tractor's front lift.
- Approach the pallet carefully and engage the forks beneath the pallet.

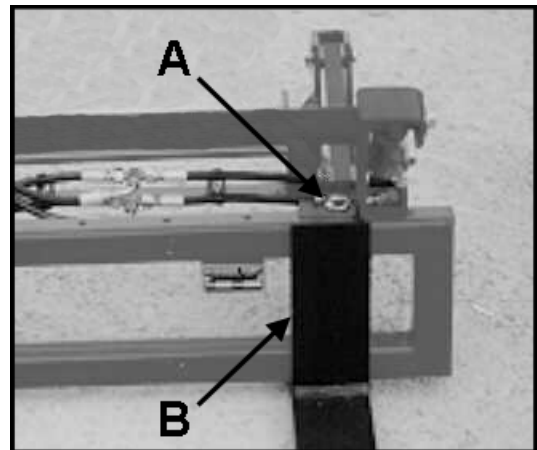
⚠ CAUTION

Do not attempt to lift loads exceeding 400 pounds. Tractor may become unstable and impossible to steer.

- Lift the load and tilt back to secure load from sliding. Use care traveling on uneven terrain. Carry the load low.

Unloading the Forks

- Lower the pallet load slowly using the auxiliary hydraulic lever, and level the pallet to the ground using the front lift hydraulic lever. Back out slowly.



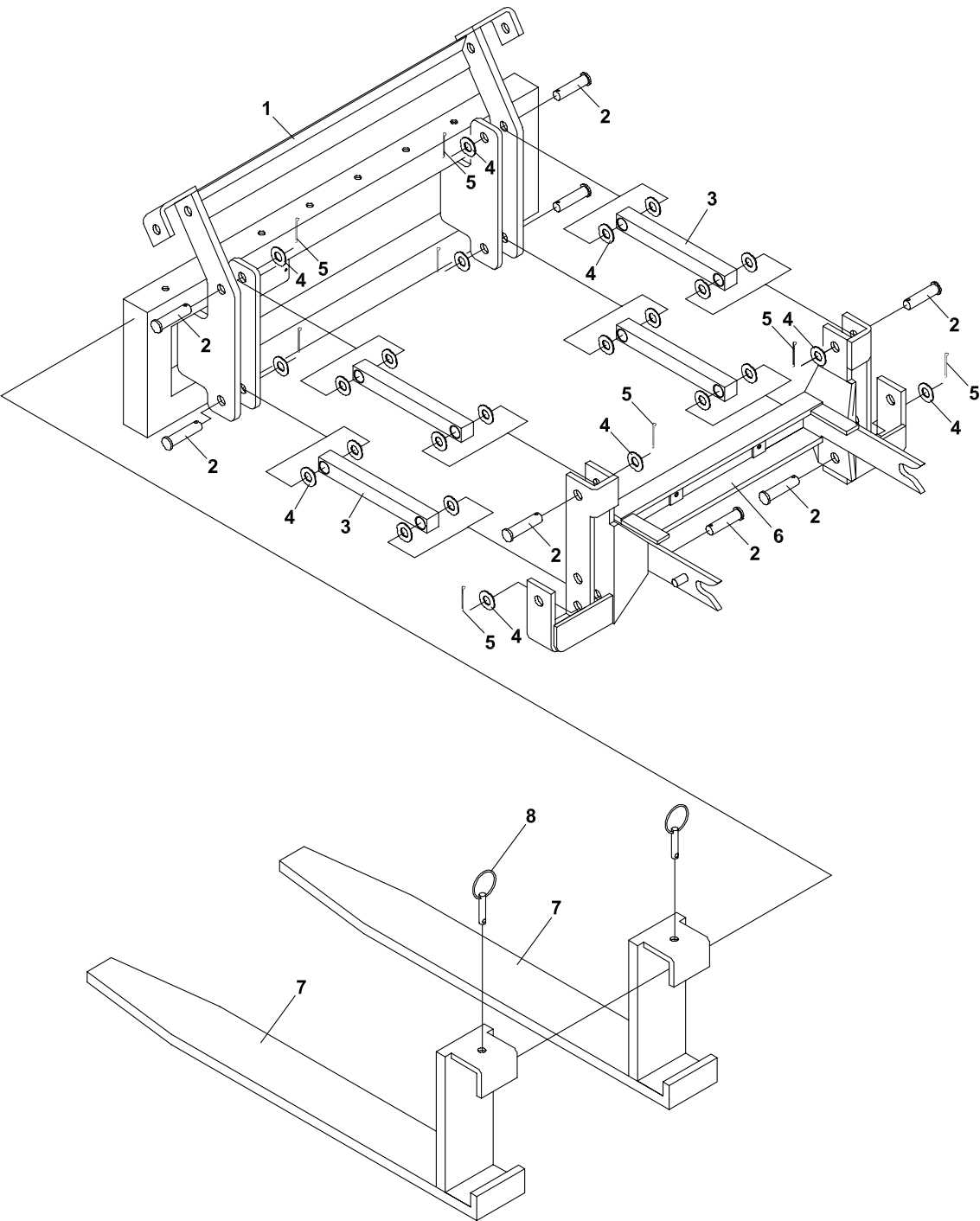
⚠ CAUTION

CARRY LOADS LOW AND AVOID QUICK, SHARP TURNS.

A REAR WEIGHT BAR IS REQUIRED WITH WEIGHTS EQUAL TO HALF OF THE PALLET LOAD.

TO REDUCE THE DANGER OF THE UNIT TIPPING OVER BACKWARDS, DO NOT CLIMB STEEP SLOPES OR LOADING RAMPS WITH REAR WEIGHTS ATTACHED AND NO LOAD ON THE PALLET FORKS.

FIGURE 1



PALLET MOVER

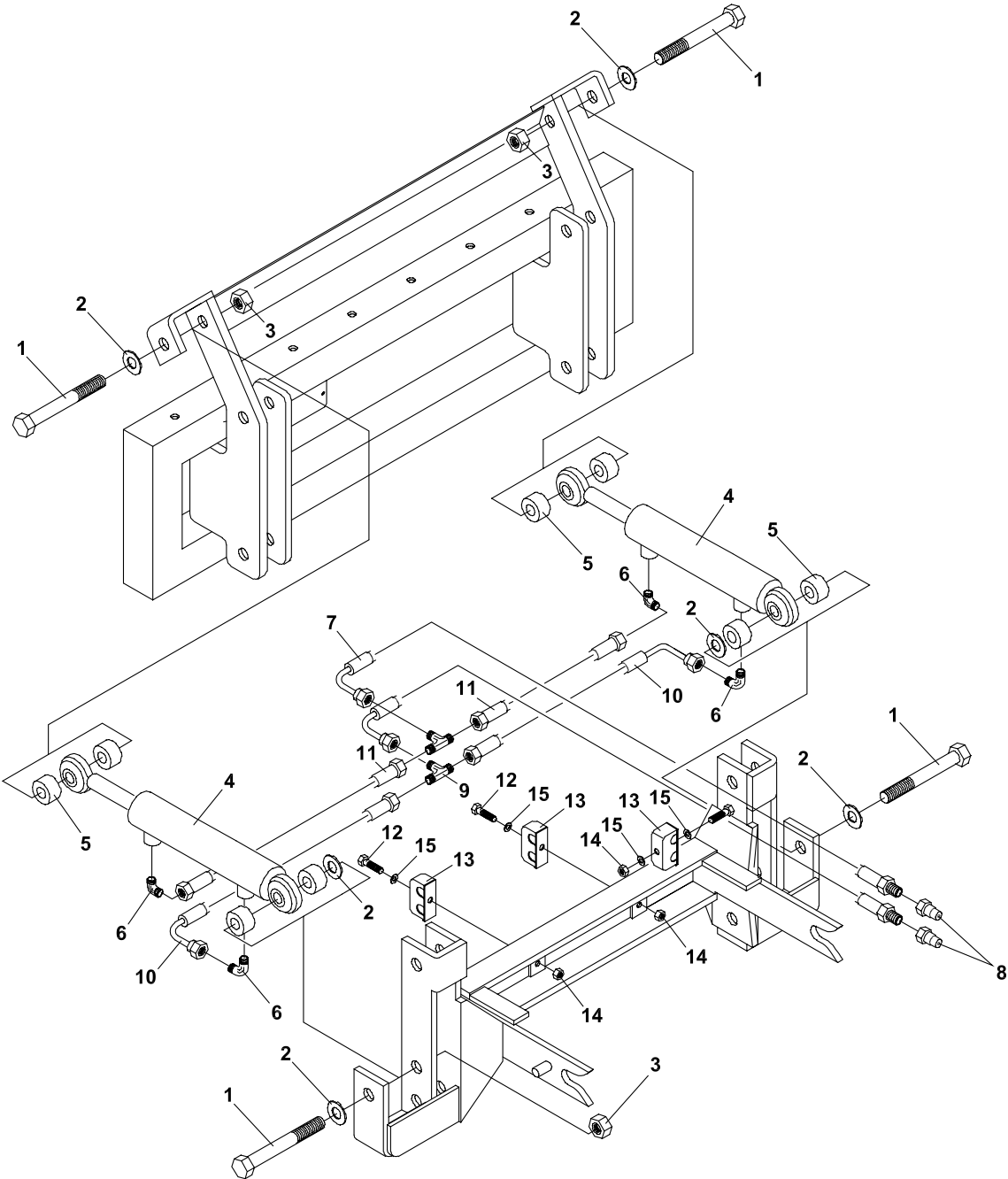
FRAME & FORKS ASSY

FIGURE 1

ITEM	PART NO.	DESCRIPTION	QTY	ITEM	PART NO.	DESCRIPTION	QTY
1-1	6103005.7	FORK FRAME	1				
*	4116761	LABEL-MADE IN THE USA	1				
1-2	03-1020	CLEVIS PIN, 5/8 X 2-1/2	8				
1-3	6103012.7	LINK-FRONT BAR	4				
1-4	64163-16	WASHER-41/64 X 1-3/8 X 12	24				
1-5	64140-1	COTTER PIN-1/8X1	8				
1-6	6103022.7	HITCH FRAME	1				
1-7	6103000.7	FORK	2				
1-8	03-020	HITCH PIN-QUICK RELEASE	2				
*	4133030	LABEL-STEINER	1				
*	4124074	LABEL-JACOBSEN	1				

* NOT ILLUSTRATED

FIGURE 2



PALLET MOVER

HITCH PARTS

FIGURE 2

ITEM	PART NO.	DESCRIPTION	QTY	ITEM	PART NO.	DESCRIPTION	QTY
2-1	90-1032	BOLT, 5/8-11 X 4	4				
2-2	64163-16	WASHER-41/64 X 1-3/8 X 12	6				
2-3	99-A10	LOCKNUT, STOVER 5/8-11	4				
2-4	23-058	CYL-1-1/2 X 5	2				
*	00-263	DECAL-WARN FORK LOAD	2				
2-5	6103030	SPACER-LINK	8				
2-6	25-2103-4-6	FITTING-90	4				
2-7	20-137	HOSE-1/4 X 48	2				
2-8	23-004	QUICK COUPLER-MALE	2				
2-9	25-033T-6-6	FITTING-UNION TEE	2				
2-10	20-136	HOSE-1/4 X 12-1/2	2				
2-11	20-026	HOSE-1/4 X 17	2				
2-12	64123-07	BOLT, 1/4-20X1-1/2	2				
2-13	11-050	CLAMP-DOUBLE HOSE	3				
2-14	64229-01	LOCKNUT-1/4-20	3				
2-15	64163-03	WSHR-.256ID X.62OD X 18	4				

* NOT ILLUSTRATED

World Class Quality, Performance And Support



Equipment from Jacobsen, a Textron company, is built to exacting standards ensured by ISO 9001 and ISO 14001 registration at all our manufacturing locations.

A worldwide dealer network and factory-trained technicians backed by Textron Parts Xpress provide reliable, high-quality product support.



BOB-CAT BROUWER BUNTON CUSHMAN RYAN STEINER