



# **JACOBSEN<sup>®</sup>**

## **TECHNICAL MANUAL**

### **21" PUSH MOWER**

---

**Model:**  
**32038 MOWER-21" 6.5HP INTEK**



*WARNING: If incorrectly used this machine can cause severe injury. Those who use and maintain this machine should be trained in its proper use, warned of its dangers and should read the entire manual before attempting to set up, operate, adjust or service the machine.*



**2721212 REV 02**

**CALIFORNIA**  
**Proposition 65 Warning**

Diesel engine exhaust and some of its constituents are known to the State of California to cause cancer, birth defects and other reproductive harm.



**WARNING**

The engine exhaust from this product contains chemicals known to the State of California to cause cancer, birth defects or other reproductive harm.

**Californie Proposition 65**  
**Avertissement**

Les échappements des moteurs diesel et certains de leurs composés sont reconnus par l'Etat de Californie pour être cancérigènes, provoquer des défauts congénitaux et d'autres dangers en matière de reproduction.



**AVERTISSEMENT**

L'émission du moteur de ce matériel contient des produits chimiques que l'Etat de Californie considère être cancérigènes, provoquer des défauts congénitaux et d'autres dangers en matière de reproduction.

**California Advertencia**  
**de la Proposicion 65**

El estado de California hace saber que los gases de escape de los motores diesel y algunos de sus componentes producen cáncer, defectos de nacimiento y otros daños en el proceso de reproducción humana.



**ADVERTENCIA**

El estado de California hace saber que los gases de escape de este producto contienen productos químicos que producen cáncer, defectos de nacimiento y otros daños en el proceso de reproducción humana.

# 21" PUSH MOWER

## IMPORTANT MESSAGE

Thank you for purchasing this Jacobsen product. You have purchased a world class mowing product, one of the best designed and built anywhere.

This machine comes with a Technical Manual. The useful life and good service you receive from this machine depends to a large extent on how well you read and understand this manual. Treat your machine properly, lubricate and adjust it as instructed, and it will give you many years of reliable service.

Your safe use of this Jacobsen product is one of our prime design objectives. Many safety features are built in, but we also rely on your good sense and care to achieve accident-free operation. For safest operation, study the manual thoroughly. Learn the proper operation of all controls. Observe all safety precautions. Follow all instructions and warnings completely. Do not remove or defeat any safety features. Make sure those who operate this machine are as well informed and careful in its use as you are.

See a Jacobsen dealer for any service or parts needed. Jacobsen service ensures that you continue to receive the best results possible from your Jacobsen products. You can trust Jacobsen replacement parts because they are manufactured with the same high precision and quality as the original parts.

Jacobsen designs and builds its equipment to serve many years in a safe and productive manner. For longest life, use this machine only as directed in the manual, keep it in good repair and follow safety warnings and instructions. You'll always be glad you did.

**Jacobsen, A Textron Company**  
**One Bob Cat Lane**  
**Johnson Creek, WI 53038-0469**

<b>TABLE OF CONTENTS</b>	<b>PAGE</b>
SAFETY .....	2
LABELS .....	3
GENERAL INSTRUCTIONS .....	4, 5
ASSEMBLY & SETUP .....	6-9
CONTROLS / SPECIFICATIONS .....	10
OPERATION .....	11
CUTTING HEIGHT .....	12
MAINTENANCE .....	13
OPTIONAL GRASS CATCHERS .....	14
PARTS SECTION .....	15
HANDLE ASSEMBLY ..... FIGURE 1 .....	16, 17
SHIELDS, BLADE & DECALS ..... FIGURE 2 .....	18, 19
WHEEL ASSEMBLY ..... FIGURE 3 .....	20, 21
OPTIONAL GRASS CATCHERS ..... FIGURE 4 .....	22, 23

**NOTICE !!!**

Unauthorized modifications may present **extreme** safety hazards to operators and bystanders and could also result in product damage.

Jacobsen, a Textron Company, strongly warns against, rejects and disclaims any modifications, add-on accessories or product alterations that are not designed, developed, tested and approved by Jacobsen Engineering Department. Any Jacobsen product that is altered, modified or changed in any manner not specifically authorized after original manufacture—including the addition of “aftermarket” accessories or component parts not specifically approved by Jacobsen—will result in the Jacobsen Warranty being voided.

Any and all liability for personal injury and/or property damage caused by any unauthorized modifications, add-on accessories or products not approved by Jacobsen will be considered the responsibility of the individual(s) or company designing and/or making such changes. Jacobsen will vigorously pursue full indemnification and costs from any party responsible for such unauthorized post-manufacture modifications and/or accessories should personal injury and/or property damage result.

**SPECIFIC TORQUES**

WHEEL HUB BOLTS: 40-50 FT-LBS (4.5-5.7 Nm)



This symbol means:  
**ATTENTION!**  
**BECOME ALERT!**

Your safety and the safety of others is involved.

**Signal word definitions:**

The signal words below are used to identify levels of hazard seriousness. These words appear in this manual and on the safety labels attached to Jacobsen machines. For your safety and the safety of others, read and follow the information given with these signal words and/or the symbol shown above.

**⚠ DANGER**

**DANGER** indicates an imminently hazardous situation which, if not avoided, **WILL** result in death or serious injury.

**⚠ WARNING**

**WARNING** indicates a potentially hazardous situation which, if not avoided, **COULD** result in death or serious injury.

**⚠ CAUTION**

**CAUTION** indicates a potentially hazardous situation which, if not avoided, **MAY** result in minor or moderate injury. It may also be used to alert against unsafe practices or property damage.

**CAUTION**

**CAUTION** used without the safety alert symbol indicates a potentially hazardous situation which, if not avoided, **MAY** result in property damage

**TEXTRON**

GOLF, TURF &amp; SPECIALTY PRODUCTS

MODEL NUMBER

SERIAL NUMBER

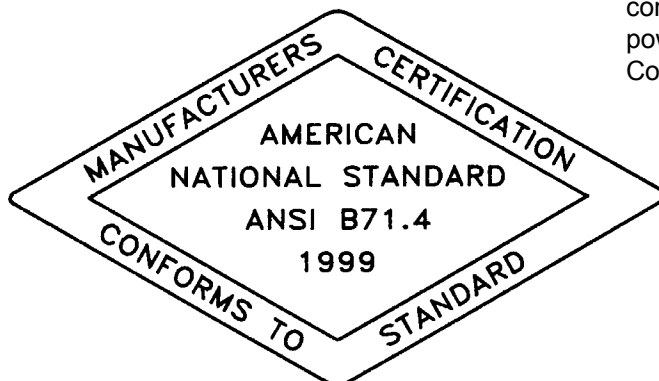
JOHNSON CREEK, WI MADE IN U.S.A.

**MODEL NUMBER:** This number appears on sales literature, technical manuals and price lists.

**SERIAL NUMBER:** This number appears only on your mower. It contains the model number followed consecutively by the serial number. Use this number when ordering parts or seeking warranty information.



Buyer's assurance that models of this mower are periodically tested by Jacobsen, and found to comply with the safety standard for walk-behind power lawn mowers issued by the U.S. Consumer Product Safety Commission.



Buyer's assurance that a model of this mower has been tested by Jacobsen, and found to conform with the safety specifications for power lawn mowers published by the American National Standards Institute. Use of non-certified attachments or accessories may void the mower certification.



**Before using mower for the first time, check engine oil and lubricate all points.**

## TRAINING

- Read the operator's manual carefully. All rotary grass cutters are potentially dangerous. No person should operate the machine unless they are familiar with the controls and the proper use of the machine.
- Never allow children, unskilled or untrained persons to operate machine. Local regulations may restrict the age of the operator.
- Keep the area of operation clear of all persons, particularly small children, and pets.
- Keep in mind that the operator or user is responsible for accidents or hazards occurring to other people or their property.

## PREPARATION

- Do not operate the equipment when barefoot or wearing open sandals. Always wear substantial footwear and long trousers.
- Thoroughly inspect the area where the equipment is to be used and remove all objects which may be thrown by the machine.
- Gasoline is highly flammable. Store gasoline only in a container specifically designed for gasoline storage in a cool, dry place away from sparks and open flame.
- When refueling or checking fuel level:
  - Stop engine. Allow to cool.
  - Refuel outdoors only.
  - Do not smoke.
  - Use a funnel. Do not overfill. Clean up spills and move machine away from spills before starting.
  - Replace caps tightly.
- Replace faulty muffler.
- Before using, always visually inspect to see that the blade, blade bolt and blade adaptor are not worn or damaged. Replace worn or damaged blade and bolts.
- Never attempt to make adjustments while the engine (motor) is running.
- Never operate the equipment in wet grass. Always be sure of your footing; keep a firm hold on the handle and walk; never run.

## OPERATION

- Do not operate the engine in a confined space where dangerous carbon monoxide fumes can collect.
- Mow only in daylight or in good artificial light.
- Always be sure of your footing on slopes.
- Walk, never run.
- Do not mow excessively steep slopes.
- Use extreme caution when reversing or pulling the mower towards you. Be sure the area behind is clear.
- Stop the engine if the mower has to be tilted for transportation, when crossing surfaces other than grass and when transporting the mower to and from the area to be mowed.
- Never operate the mower without proper guards, plates, grass catcher or other protective safety devices in place.
- Do not change the engine governor settings or overspeed the engine.
- Start the engine carefully according to instructions and with feet well away from the blade.
- Do not start the engine when standing in front of the discharge chute.
- Do not put hands or feet near or under rotating parts. Keep clear of the discharge opening at all times.
- Never pick up or carry a mower while the engine is running.
- Stop the engine, wait for the blade to come to a complete stop, and disconnect the spark plug wire:
  - before clearing blockages or unclogging chute;
  - before checking, cleaning or working on the mower;
  - after striking a foreign object. Inspect the mower for damage and make repairs before restarting and operating the mower;
  - if mower starts to vibrate abnormally (check immediately for the cause). Vibration is generally a warning of trouble.
- Stop the engine:
  - whenever you leave the mower;
  - before refuelling.

- Stop the engine and wait until the blade comes to a complete stop before removing the grass catcher or unclogging chute.
- Reduce the throttle setting during engine shut down, and if engine is provided with a shut-off valve, turn the fuel off at the conclusion of mowing.
- Keep washout ports and other mower-housing service openings closed when mowing.
- Do not operate where flying debris may injure people or damage property. Keep pets at a safe distance.
- Do not use if there are any doubts about safety.
- Replace operators manual if lost or damaged.
- Obey safety instructions. Failure to do so may cause injury to yourself or others.
- Do not defeat interlocks. Check operation daily.

### OPERATING ON SLOPES

#### *USE EXTRA CARE WHEN WORKING ON SLOPES*

- With walk behind machines, **always** mow across slopes, **not** up and down. With ride-on machines, **always** mow up and down slopes, **not** across.
- Be alert to dips and rises which change the general slope. Watch for holes, rocks and roots in the terrain and other hidden hazards. Keep away from drop offs. Avoid ground conditions which will cause the machine to slide.
- If the operator is uncomfortable or unsure of the machines stability, operation on these slopes should cease immediately.
- The ultimate responsibility for safe operation on slopes, rests with the operator.
- Use lower speeds and exercise extreme caution on slopes and especially in sharp turns to prevent tipping and loss of control. Use extra caution when changing direction on slopes.

### MAINTENANCE AND ADJUSTMENTS

- Disconnect spark plug wire before doing any maintenance.
- Particular care must be taken when adjusting the carburetor while running. Keep hands and feet clear.
- When working underneath lifted parts or machines, make sure adequate support is provided.
- Do not dismantle the machine without releasing or restraining forces which can cause parts to move suddenly.
- Keep all nuts, bolts and screws tight to be sure the equipment is in working condition.
- Check the grass catcher frequently for wear and deterioration.
- Replace worn or damaged parts for safety.

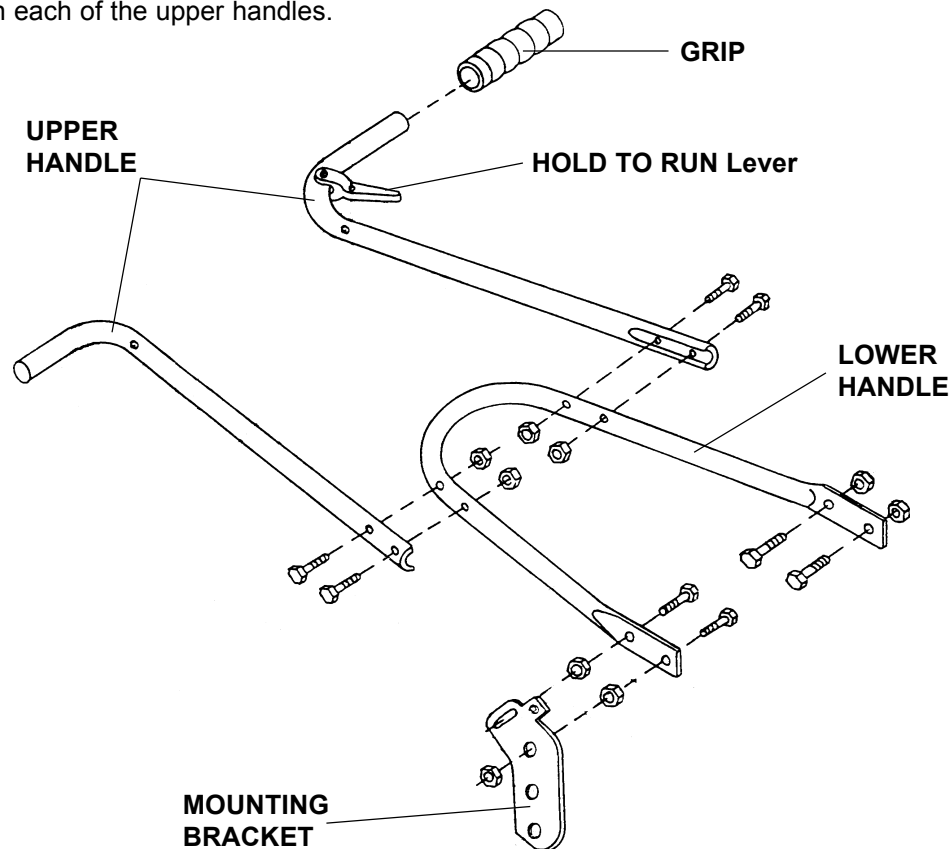
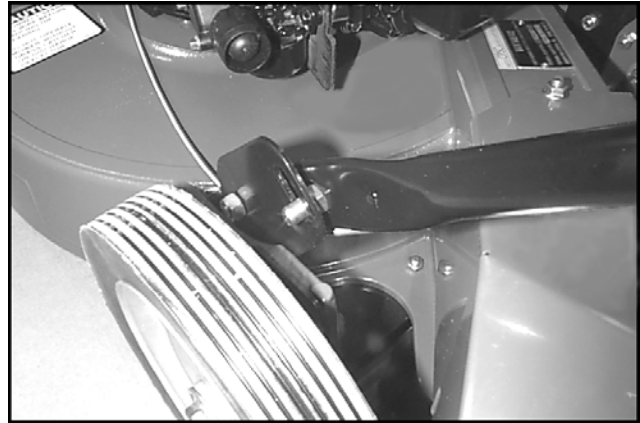
### STORAGE

- Never store the equipment with gasoline in the tank inside a building where fumes may reach an open flame or spark.
- Allow the engine to cool before storing in any enclosure.
- To reduce the fire hazard, keep the engine, muffler and gasoline storage area free of grass, leaves or excessive grease.
- If the fuel tank has to be drained, this should be done outdoors.
- Use only replacement parts supplied by the original manufacturer.

**Remove spark plug wire before working on mower.**

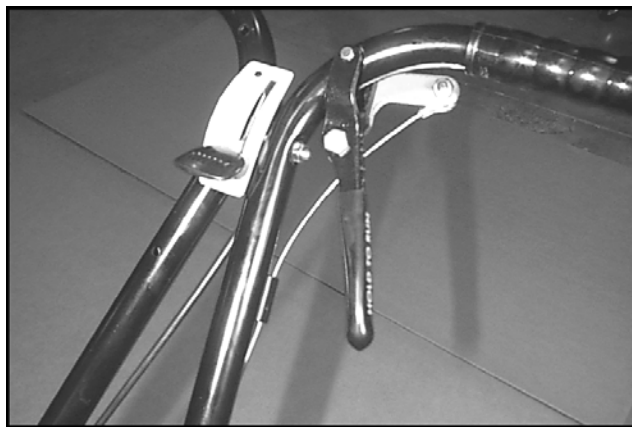
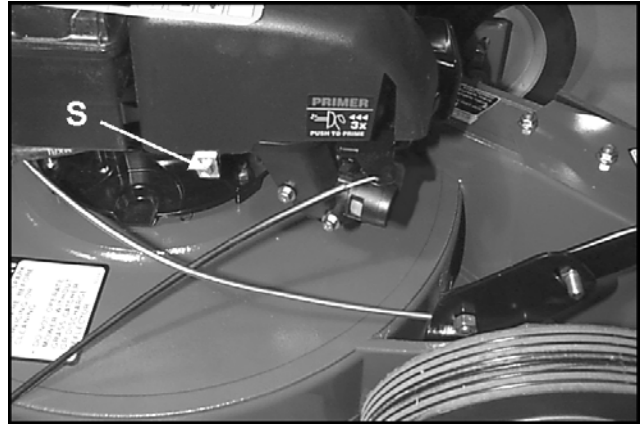
**All references to right or left are as viewed from the operating position.**

1. **LOWER HANDLE** - Install four 3/8-24 X 1" bolts in the lower handle facing outward. Secure with four jam nuts. Tighten securely.
2. Squeeze the lower handle together and snap it into the four holes in the handlebar mounting brackets. Attach a 3/8-24 locknut on each of the two LOWER bolts, as shown. Tighten as far as possible without causing the handle to bind when pivoted.
3. Assemble the upper handle to the lower handle as shown with four 5/16-18 X 1-1/2" bolts and hex locknuts. Do not tighten locknuts securely yet.
4. Install grips on each of the upper handles.

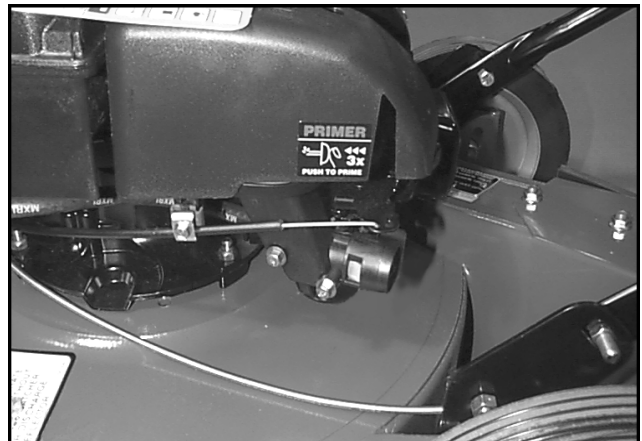




5. **THROTTLE CABLE** – Connect the throttle cable to the engine by hooking the 'Z' bend of the inner wire to the governor control lever. Route the cable around the front of the engine and under the oil filter. Position the control between the upper handle tubes and secure with a 1/4-20 X 2-1/2 bolt and lock nut. Tighten the 4 nuts left loose in step 3.
6. Set the throttle control to the "FAST" position and then back off a 1/8". At the engine end of the cable, pull the cable housing towards the front of the mower to move the engine governor lever all the way to the "FAST" position. Install cable clamp on engine at location **S** using the screw provided. Tighten clamp screw securely.

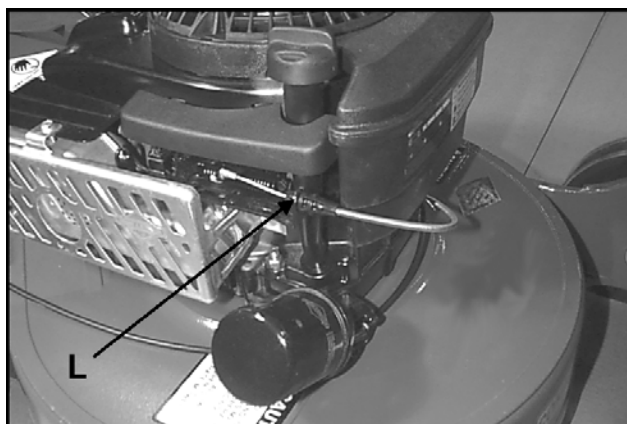


**THROTTLE CLAMPED FOR  
ASSEMBLY TO HANDLE**

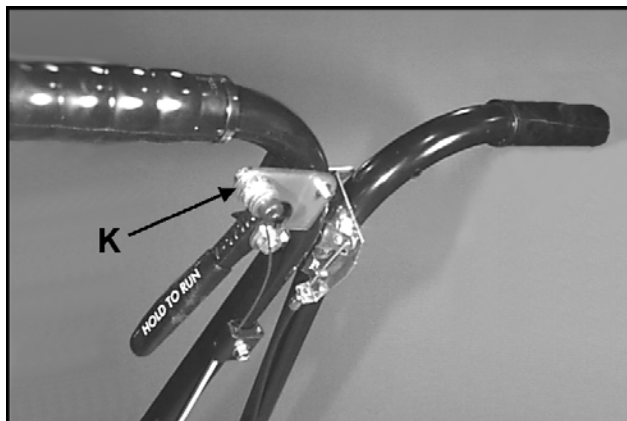


**COMPLETED THROTTLE CABLE  
ASSEMBLY TO ENGINE**

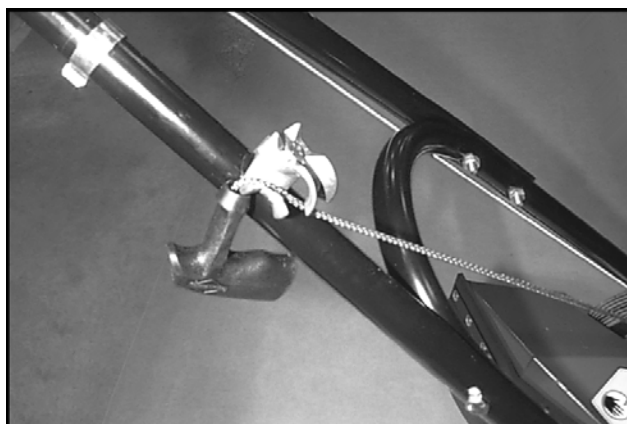
7. Hook the 'Z' bend end of the brake cable into engine brake control arm which is located on the front right hand side of the engine. Snap the plastic fastener on the cable into the flange **L** on the engine. Route the cable around the front of the engine.



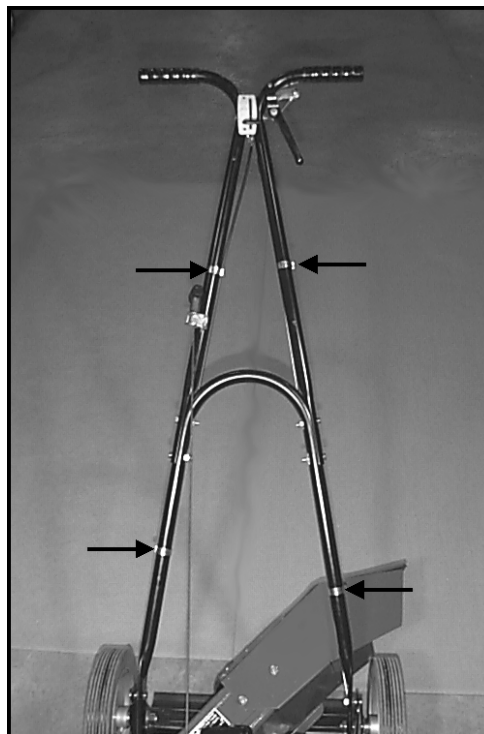
8. **BRAKE CABLE** - Secure the brake cable to the upper left handle with a 1/4-20 X 5/8" thread-forming bolt. Attach the eye of the cable wire to the "HOLD TO RUN" control arm at **K** with a 5/16 X 1/2" shoulder bolt, two washers and a locknut. Place both washers next to the bolt head. Route the brake cable under the handle assembly.



9. Attach the rope guide to the right handle with a 1/4-20 X 2" bolt and locknut. The eye of the guide should be over the outside of the handle.
10. Split the halves of the guide and pass the pull rope into the eye of the guide. Tighten the nut holding the rope guide to the handle while holding the bolt head in the clamp socket (be careful not to overtighten).

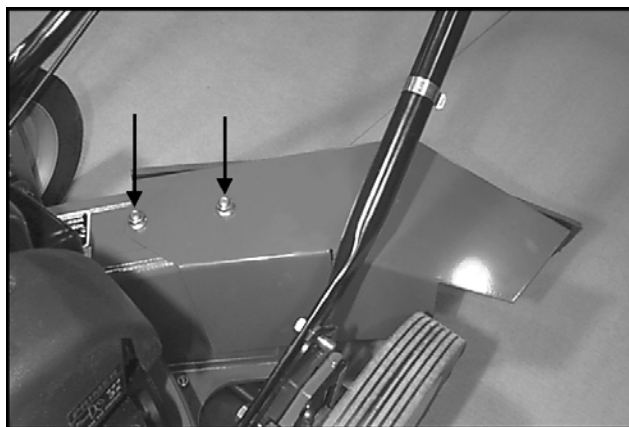


11. Attach the cables to the handles at locations shown, using two cable clamps for each cable.



12. Attach the discharge chute to the mower housing with two 5/16-24 X 3/4" whizlock bolts and nuts.

13. Remove the protective paper from the throttle control plate.

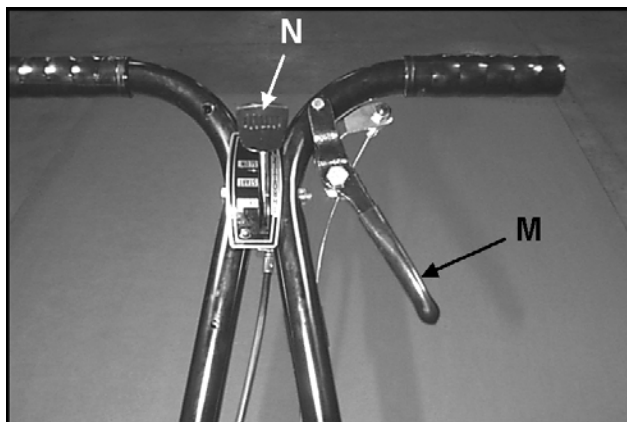


14. The engine is shipped without oil. Before starting, fill with oil to the full level on the dipstick. See engine manual for proper oil specifications.

15. Fill the fuel tank with clean, fresh, unleaded gasoline.

**HOLD TO RUN LEVER M-** Hold to handle bar to operate mower. Release lever to stop engine.

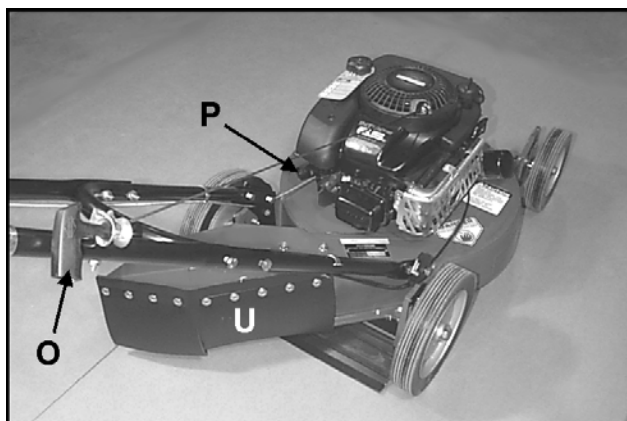
**ENGINE THROTTLE N** - Push forward to increase engine speed. Pull back to slow engine.



**RECOIL STARTER O** - Pull and release to start engine.

**PRIMER BULB P** - Press and release to prime engine for starting.

**DISCHARGE CHUTE U** - Directs grass discharge away from operator. The discharge chute or grass catcher must be on the machine while operating.



MODEL	32038
Engine	Briggs & Stratton Intek Pro
Horsepower	6.5 hp
Bore & Stroke	2.69" x 2.04" (68.0 mm x 51.8 mm)
Displacement	11.57 cu in (190 cc)
Fuel Tank	1.6 quarts (1.5 l)
Controls	Throttle control on handle; primer bulb on engine; operator present control stops engine within 3 seconds of release
Handles	1" - 16-gauge steel tube with 16-gauge reinforcement
Tires	Welded steel wheels with greaseable ball bearings
Front	8.00 x 1.75 semi-pneumatic
Rear	10.00 x 1.75 semi-pneumatic
Cutting Width	21" (533 mm)
Construction	High-strength cast aluminum magnesium alloy
Cutter Type	Rotary rear discharge
Blade	One-piece, high lift, 1060 annealed and heat-treated steel
Cutting Height Adjustment	.5" to 3.5", in .25" increments (13 - 90 mm in 6 mm increments); axle bolts mount into slots in heavy-duty cutting deck
Shipping Weight	101 lb (45.9 kg)

### PREPARATION

- Before starting, check the oil level. If necessary, add oil to the full mark on the dipstick. See the engine manufactures manual for specifications.
- Make sure the spark plug wire is connected to the plug.

### **WARNING**

#### **FUEL TANK: GASOLINE IS HIGHLY FLAMMABLE!**

- Fill fuel tank with good quality, clean, regular unleaded gasoline.
- Do not use hi-test fuel
- Do not smoke.
- Do not spill fuel.
- Fill fuel tank outdoors.
- Do not overfill. Fill to 1" below bottom of filler neck to allow room for expansion.

### STARTING

- Make sure the spark plug wire is connected to the plug.
- Push the primer bulb firmly three times (not necessary if engine is hot and did not run out of fuel).
- Move to operator's position and squeeze the **HOLD TO RUN** Lever to the handle.
- Move the throttle to the **FAST** position.
- Pull the recoil starter rope rapidly (see engine manufacturer's manual for recommendations).
- If the engine fails to start after several pulls (especially in cold weather), try repriming.
- When engine starts, move throttle to desired setting.
- To stop the machine, release the **HOLD TO RUN** lever.

### OPERATING THE MACHINE

- For normal use the throttle should be kept fully open.
- Using the machine at less than full throttle in heavy conditions will cause the engine to labor and result in excessive wear.
- Fit the discharge chute, grass collector or mulching plate before starting the engine.
- If grass is extremely tall, it should be mowed twice—the first cut relatively high and the second cut to the desired height.

### **CAUTION**

**PREVENT INJURY OR PROPERTY DAMAGE FROM THROWN OBJECTS OR FROM CONTACT WITH THE BLADE**

### **WARNING**

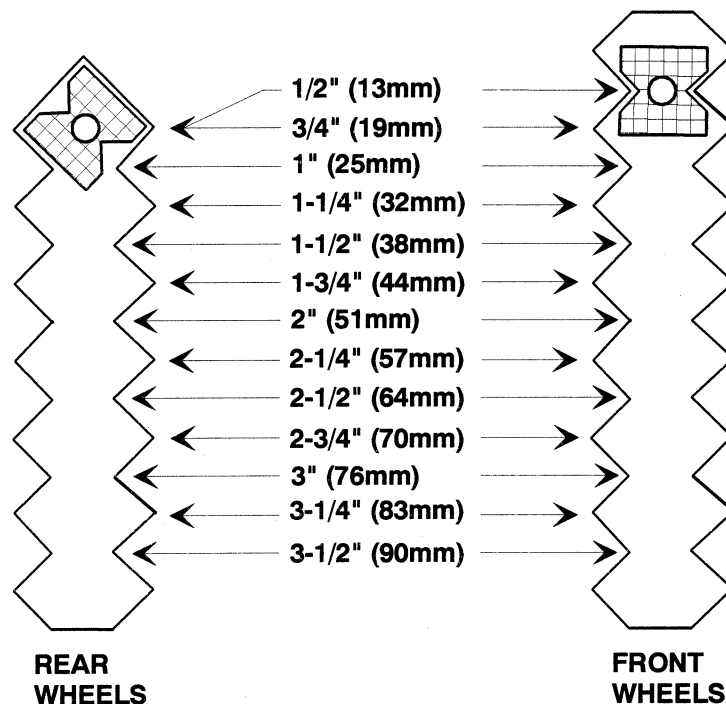
- Keep body parts away from blade.
- Stop engine and let blades stop before removing grass collector or unclogging.
- Keep area clear of people and pets.
- Remove objects blade may strike and throw.
- Stop blades to cross gravel areas.
- Do not operate without discharge chute, mulching plate or entire grass collector in place.

**NOTE:** Stop engine and remove spark plug wire before adjusting cutting height.

Cutting height is adjustable over a 3" range in 1/4" increments. The adjustment is made individually for each wheel by aligning the wheel's notched adjusting nut along the notched slot in the wheel mounting flange (see illustration for 0.5" cutting height below). The front wheels should be adjusted first, followed by the rear wheels, until all are set to the same position and the mower is level.

1. Front wheels
  - a. Loosen the 1/2" hex nut sufficiently so the wheel can be pulled out approximately 1/4" and the square adjusting nut can clear the notch.
  - b. Move the adjusting nut to the desired position. See below to select the appropriate notch position.
2. Rear wheels
  - a. First raise the rear of the mower and support on blocks.
  - b. Adjust as for the front wheels.
3. Before using the mower, make sure all wheel are set to the same position and all wheel nuts securely tightened.

**NOTE:** Alignment of the square nut with the notched flange is aided by holding the axle bolt with a box wrench.

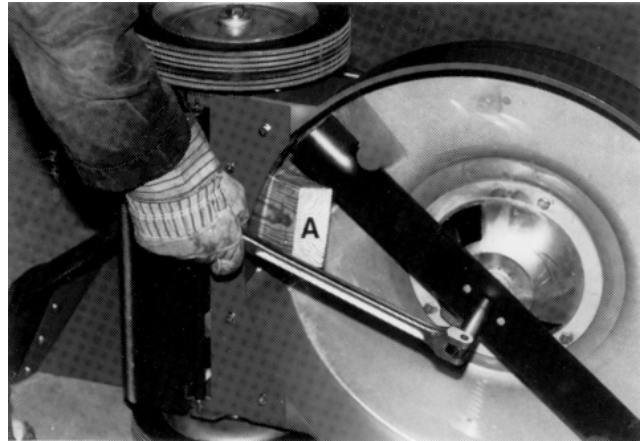


Wheel nut positions for 1/2" (13mm) cutting height. The rear wheel adjustment position is the same for 1/2" (13mm) and 3/4" (19mm) cutting heights. The setting shown above illustrates the 45° rotation of the adjustment nut between adjacent adjustment positions.

### BLADE REMOVAL

**NOTE:** Stop engine and remove spark plug wire before removing blade.

1. Use a box wrench or socket with a long breaker bar to remove the blade bolt.
2. Slip tube over breaker bar or wrench if necessary to gain leverage. To prevent blade from turning, place block of wood **A**, with its grain perpendicular to the blade.
3. Keep hands clear because the blade may rotate when the bolt releases.
4. When changing a blade, wear thickly padded gloves.



### BLADE SHARPENING

The blade may be sharpened by filing or grinding, but with either method the blade balance must be maintained. Failure to maintain balance causes excess vibration, wear and shortened life, not only of the blade, but of most other components of the machine.

To balance a blade after sharpening, first balance at the center to determine which blade end is lightest. Place or attach a 1/8 oz weight 5" from the center of the lightest end. This should change the balance so that the lightest end becomes the heaviest end. If it does not, file or grind the heavy end until this test is passed.

#### NOTES:

- Do not overheat or weaken the blades.
- Do not straighten bent blades. Replace with new Jacobsen blades.  
If lift portion of blade is worn thin replace with a new Jacobsen blade.
- ALWAYS replace with Jacobsen blades—do not use another manufacturer's blades as this could be dangerous.
- Replace cracked or bent blades.

### LUBRICATION

1. Grease fittings in wheel hubs every 50 hours under normal use (more often under dirty or dusty conditions). Add grease until it comes out thrust washers on both sides of wheels. Wipe excess away.
2. Change engine oil, oil filter and clean air cleaner as specified in engine owner's manual.

#### **CAUTION**

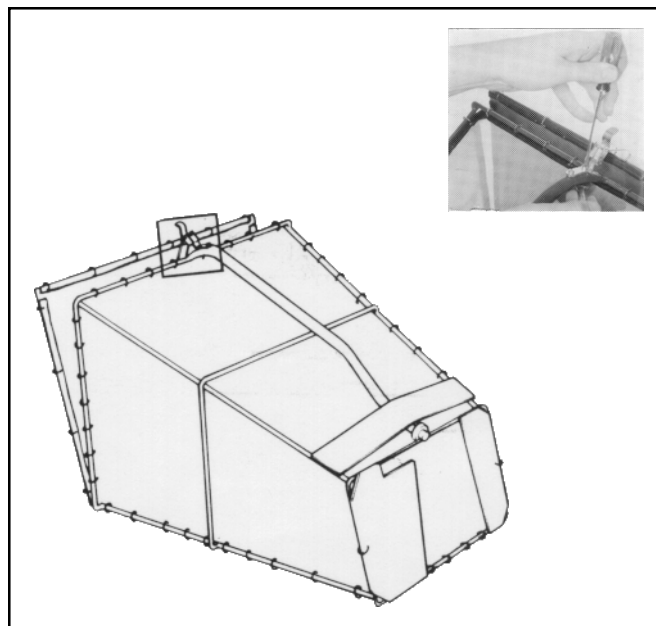
Used oil is a hazardous waste product. Dispose of used oil properly. Do not discard with household waste. Check with you local authorities service center, or dealer for safe disposal/recycling facilities.

3. Oil **HOLD TO RUN** lever pivots with a light oil (SAE 20 or equivalent) every 25 hours.

### INSTALLATION

#### 68125 Metal catcher

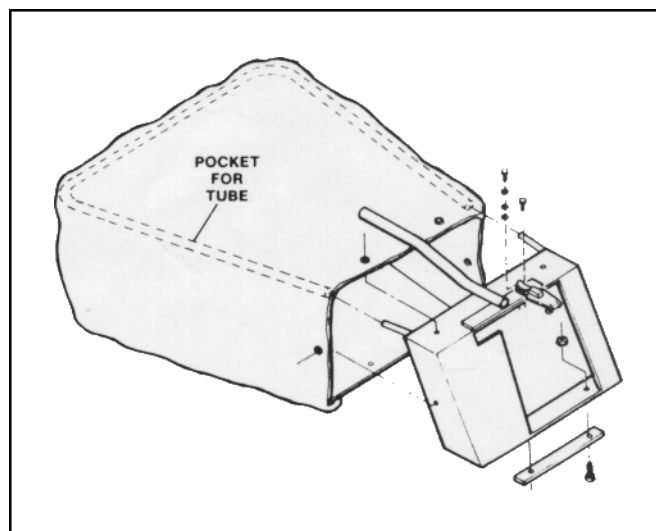
1. Stop engine.
2. Attach latch to handle with two screws and nuts supplied. The nuts should be on the underside of the tube.
3. Bolt the T-bar to the deck with the 5/16-24 bolts supplied. Center T-bar over rear of chute and then position rod perpendicular to chute opening. Tighten securely.



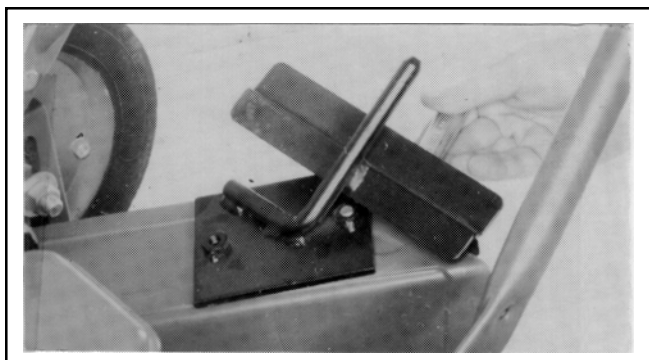
**68125 METAL CATCHER**

#### 68126 Poly catcher

1. Insert the tube into the bag and into pocket sewn into bag to retain it.
2. Push tube on front frame of grass catcher. Secure catcher to frame with 6 screws, nuts and strap. The nuts should be on the inside.
3. Attach latch to front frame of grass catcher with screws as shown.
4. To close the top of the bag, stretch the cover (with elastic) back over the tube and attach the latch with screws and washers.
5. Bolt the T-bar to the deck with the 5/16-24 bolts supplied. Center T-bar over rear of chute and then position rod perpendicular to chute opening. Tighten securely.



**68126 POLY CATCHER**



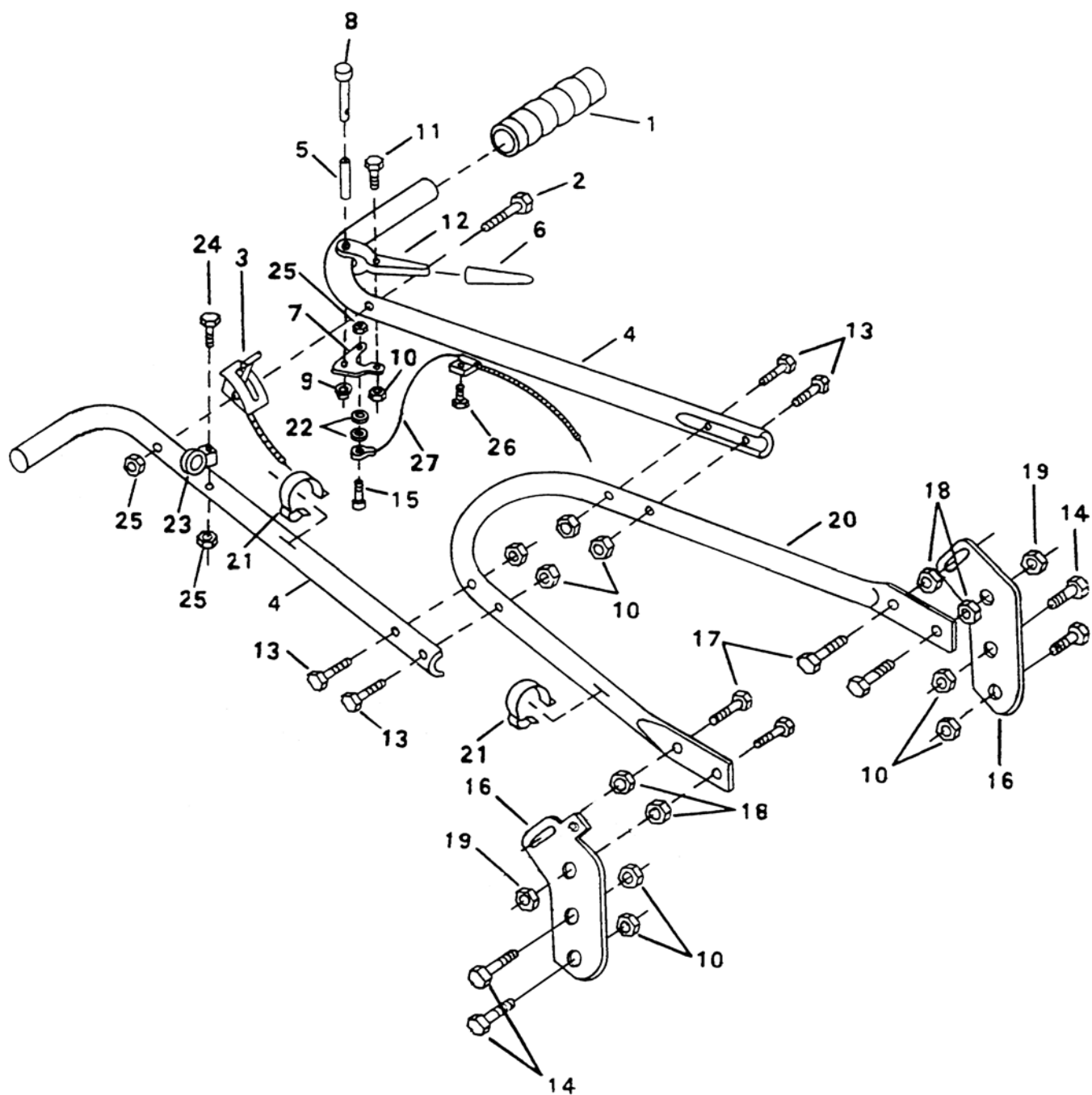
**T-BAR INSTALLATION**

**REMOVAL** - To empty grass catcher, always stop the engine first.



# **PARTS SECTION**

FIGURE 1



# 21" PUSH MOWER

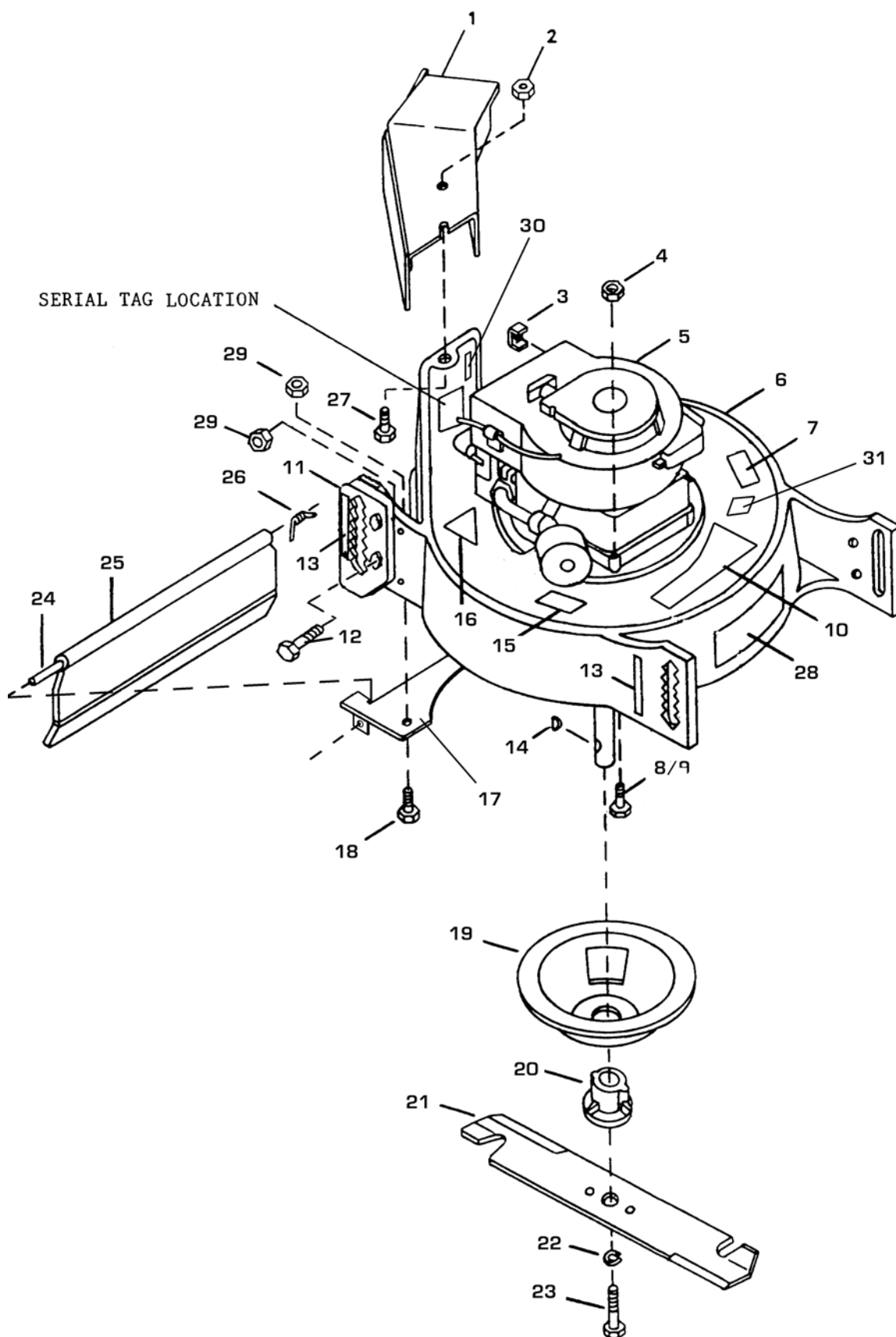
2721210-01

## HANDLE ASSMBLY

FIGURE 1

ITEM	PART NO.	DESCRIPTION	QTY	ITEM	PART NO.	DESCRIPTION	QTY
1-1	78011-1A	GRIP-PLAIN 1 IN	2				
1-2	64123-113	BLT-HEX 1/4-20X2-1/4	1				
1-3	2721189-01	CABLE-THROTTLE 76.5	1				
1-4	2720657.7	HANDLE-UPPER	2				
1-5	64061-18	ROLL PIN-5/16X1	1				
1-6	75090	GRIP,HOLD TO RUN	1				
1-7	72156	LEVER OVER CENTER	1				
1-8	64188-20	PIN, CLEVIS.177 WO HOLE	1				
1-9	64226-01	RETAINER, GRVLS.177D	1				
1-10	64151-1	5/16-18 HEX LOCK NUT	5				
1-11	64123-68	BOLT-HEX 5/16-18X1	1				
1-12	61040A.7	LEVER-TRACTION CNTRL	1				
1-13	64123-69	BOLT-5/16-18X1-1/2 HEX	4				
1-14	64123-47	BLT-HEX 5/16-18X1-1/4	4				
1-15	64166-6	5/16X1/2 1/4-20 SHLD	1				
1-16	72021-1B.7	BRKT-CAST DECK HANDLE	2				
1-17	64123-02	BLT-HEX 3/8-24X1	4				
1-18	64001-2	NUT-JAM 3/8-24	4				
1-19	64151-19	3/8-24 HEX C. LOCK NUT	2				
1-20	72116C.7	HANDLE-LOWER	1				
1-21	78007N	THROTTLE CABLE CLIP	4				
1-22	64163-02	WSHR-.321X.593X11GA	2				
1-23	B396494	GUIDE,ROPE	1				
1-24	64123-60	BOLT, 1/4-20X2 HEX	1				
1-25	64151-17	LOCKNUT, HEX	3				
1-26	64152-27	1/4-20X5/8 LG SP SCREW	1				
1-27	78135-02	CABLE-BRAKE 68	1				

FIGURE 2



# 21" PUSH MOWER

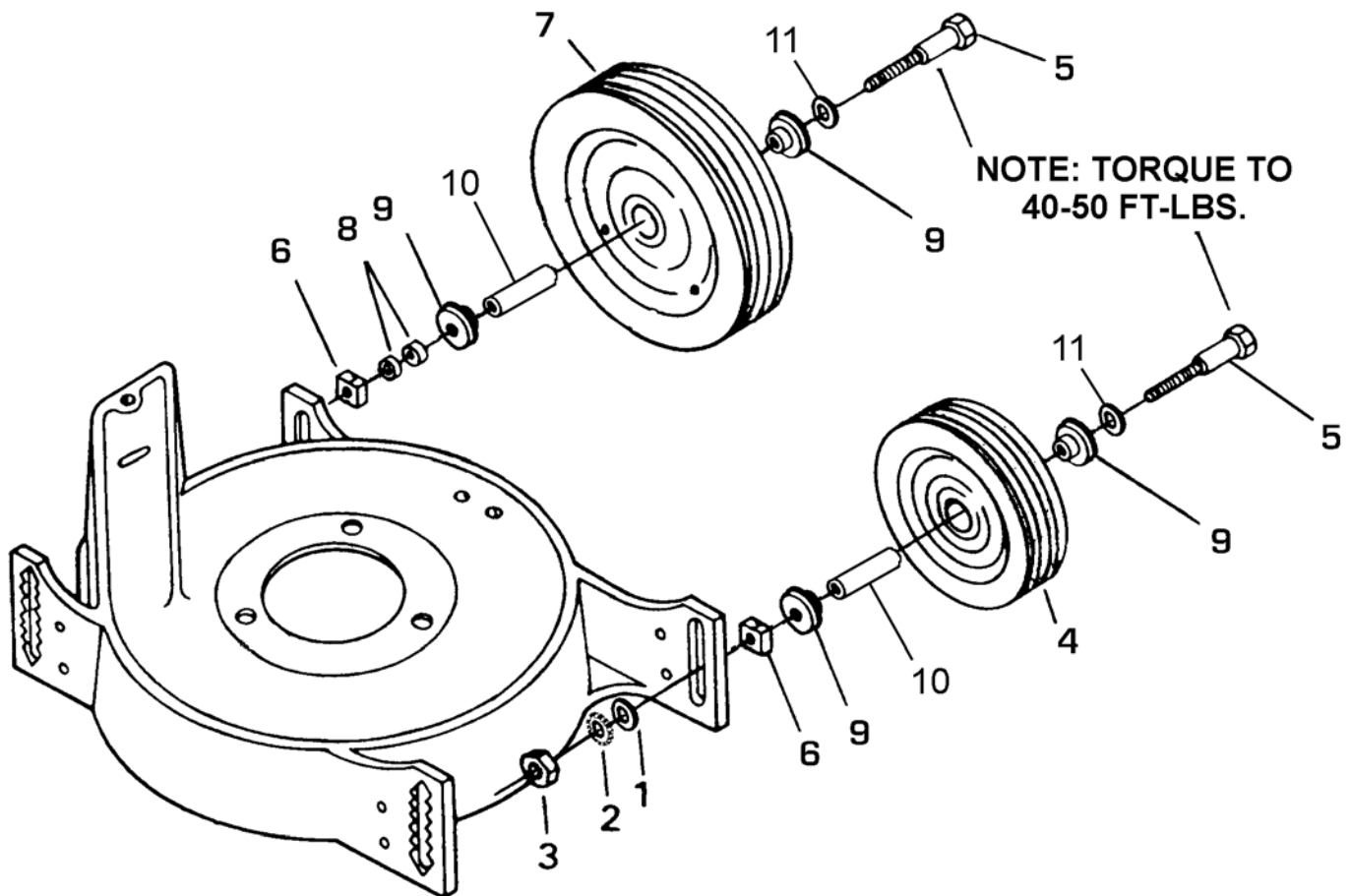
2721212-02

## SHIELDS, BLADE & DECALS

FIGURE 2

ITEM	PART NO.	DESCRIPTION	QTY	ITEM	PART NO.	DESCRIPTION	QTY
2-1	2720010	ASSY-CHUTE 21	1				
2-2	64141-1	NUT-WLF 5/16-24	2				
2-3	22372	B&S CABLE CLAMP	1				
2-4	64151-1	LOCKNUT-HEX 5/16-18	3				
2-5	2721190	ENGINE-B&S 6.5 INTEK	1				
2-6	2720014	S-21IN DECK W/LABS	1				
2-7	00347	LABEL-WARN, SPARKPLUG	1				
2-8	64123-56	BLT-HEX 5/16-18X2	2				
2-9	64123-55	BLT-HEX 5/16-18X3	1				
2-10	4124289	LABEL-JACOBSEN	1				
2-11	72171.7	ADJUSTER-HEIGHT	2				
2-12	64123-80	BLT-HEX 1/4-20X1-1/4	4				
2-13	00268	LABEL HEIGHT ADJUSTING	4				
2-14	64164-07	#61 WOODRUFF KEY	1				
2-15	00346	LABEL-WARNING, READ	1				
2-16	75075A	DECAL, CPSC DANGER	1				
2-17	76174.7	WLDMT-BAFFLE & PLATE	1				
2-18	64123-89	BOLT-HEX 1/4-20X3/4	4				
2-19	71010	C/S PROTECTOR 25 MM	1				
2-20	71009	ADAPTER, BLADE 25 MM	1				
2-21	72039B	21 CUTTER BLADE	1				
2-22	64006-03	WSHR, 3/8 HELICAL LOCK	1				
2-23	64123-103	BLT-HEX 3/8-24X1-1/2G8	1				
2-24	73035A	21 PIVOT PIN-PLATE	1				
2-25	78048-2B	SHIELD, REAR (16 LG)	1				
2-26	75073A	SPRING	1				
2-27	64139-01	BLT-WLF 5/16-24X3/4	2				
2-28	2720003	LABEL-COMMERCIAL 21	1				
2-29	64229-01	LOCKNUT-1/4-20 NYLON	8				
2-30	75091	DECAL, CPSC SAFETY REQ	1				
2-31	2721226	LABEL-ANSI B71.4 1999	1				

FIGURE 3



# 21" PUSH MOWER

2721210-03

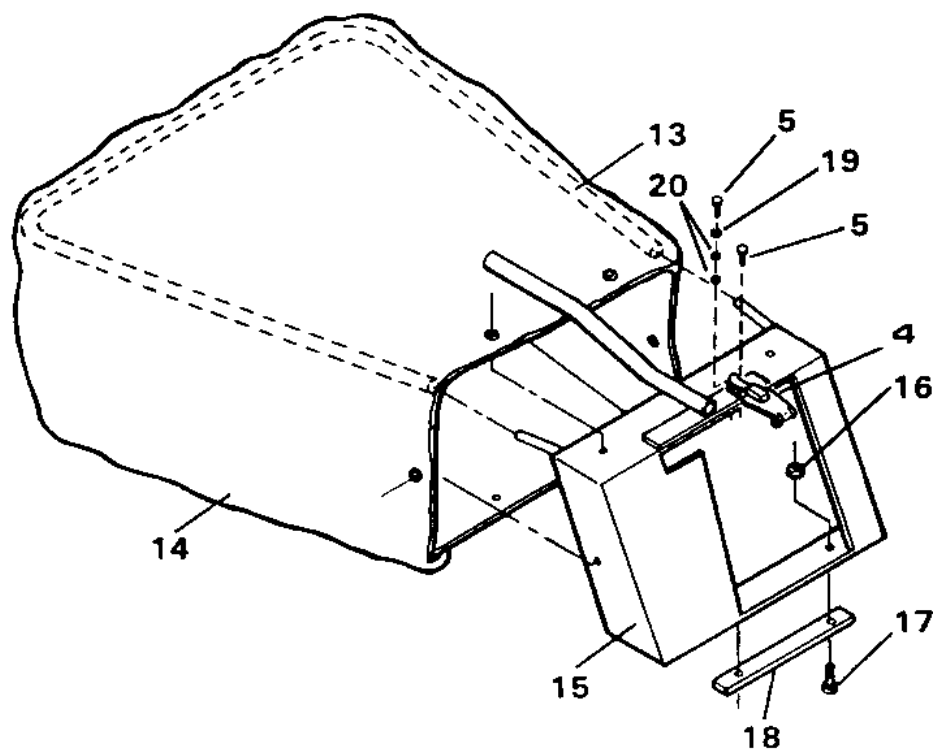
## WHEEL ASSEMBLY

FIGURE 3

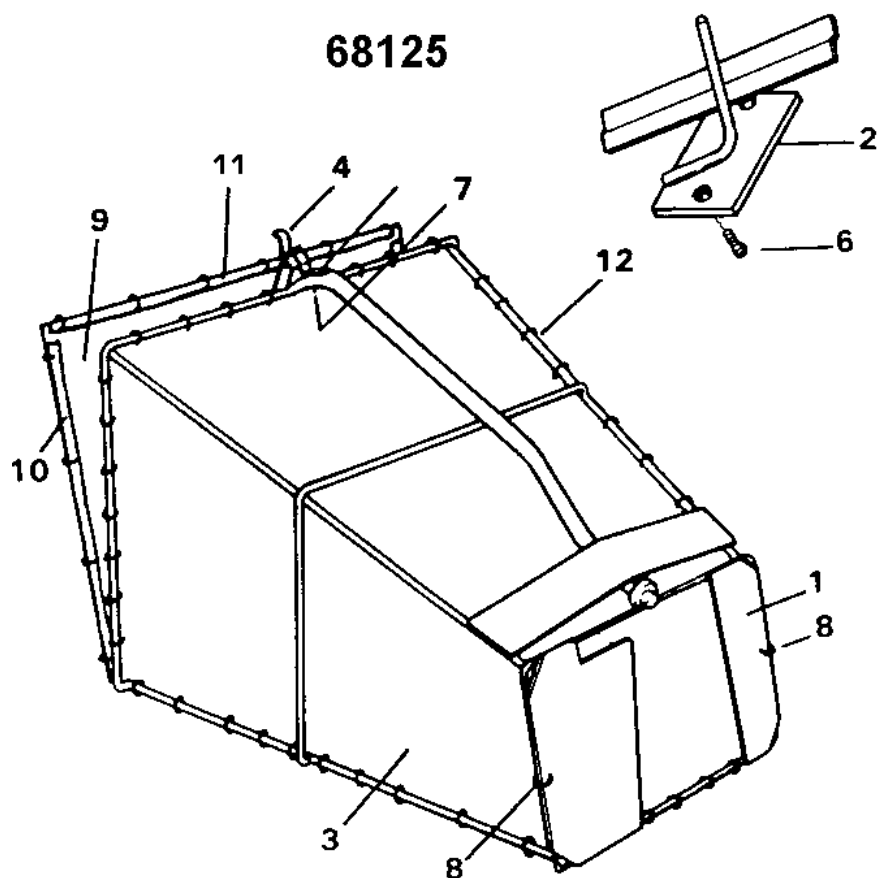
ITEM	PART NO.	DESCRIPTION	QTY	ITEM	PART NO.	DESCRIPTION	QTY
3-1	64163-19	WSHR-33/64X1-1/4X12GA	4				
3-2	64002-20	LOCKWSHR-TOOTH,INT,1/2	4				
3-3	64025-19	NUT-1/2-13 HEX	4				
3-4	4128640	WHEEL & TIRE, 8X1.75	2				
3-5	64123-147	BOLT-1/2-13X4, 2-1/4 THD	4				
3-6	75002A	NUT,WHEEL HGT. ADJUST.	4				
3-7	4128639	WHEEL & TIRE, 10X1.75	2				
3-8	73022A	PIVOT BUSHING-PLATE	4				
3-9	2722682	S BEARING WHEEL	8				
3-10	2722230-05	SPANNER-.748X.51X2.045	4				
3-11	64163-67	WASHER-.516X1X12GA	4				

FIGURE 4

68126



68125





# 21" PUSH MOWER

2721210-04

## OPTIONAL GRASS CATCHERS

FIGURE 4

ITEM	PART NO.	DESCRIPTION	QTY	ITEM	PART NO.	DESCRIPTION	QTY
1	76036A.7	ASSY-G/C FRAME	1				
2	76038C.7	BAR-G/C T	1				
3	76120	LINER,GRASS CATCHER	1				
4	78009N	DOOR LATCH	1				
5	64152-20	8-32X1/2 MACH SCREW	2				
6	64139-01	BLT-WLF 5/16-24X3/4	2				
7	64025-29	NUT-HEX #8-32 KEPS	2				
8	75047N	HOG RING	2				
9	72091A	G/C DOOR BAFFLE	1				
10	75065-1N	VINYL EXTRUSION 13.5	2				
11	75065-2N	VINYL EXTRUSION 18	1				
12	75067N	HOG RINGS SHARP ENDS	92				
13	73033C1.7	TUBE-TOP SUPPORT	1				
14	2720016	BAG-REINFORCED GRASS	1				
15	76077C.7	WELDMENT FRAME G.C.	1				
16	64025-15	NUT-HEX #10-24 KEPS	6				
17	64152-06	10-24X1/2 MACH SCREW	6				
18	72119A.7	STRIP-REINFORCING	1				
19	64163-02	WSHR-.321X.593X11GA	1				
20	64163-03	WSHR-.256IDX.62ODX18GA.2					
BOTH OPTIONAL GRASS CATCHERS MAY BE ORDERED COMPLETE							
21	68125	ATT-GC METAL COMM 21	1				
22	68126	ATT-GC POLY COMM 21	1				

## **World Class Quality, Performance And Support**



Equipment from Jacobsen, a Textron company, is built to exacting standards ensured by ISO 9001 and ISO 14001 registration at all our manufacturing locations.

A worldwide dealer network and factory-trained technicians backed by Textron Parts Xpress provide reliable, high-quality product support.



---

***BOB-CAT BROUWER BUNTON CUSHMAN RYAN STEINER***