

OWNER/OPERATOR'S MANUAL & ILLUSTRATED PARTS LIST

MODEL:

73-71010 ROUGH CUT MOWER RC466



WARNING: If incorrectly used this machine can cause severe injury. Those who use and maintain this machine should be trained in its proper use, warned of its dangers and should read the entire manual before attempting to set up, operate, adjust or service the machine.



09-408 REV B

CALIFORNIA
Proposition 65 Warning

Diesel engine exhaust and some of its constituents are known to the State of California to cause cancer, birth defects and other reproductive harm.



WARNING

The engine exhaust from this product contains chemicals known to the State of California to cause cancer, birth defects or other reproductive harm.

Californie Proposition 65
Avertissement

Les échappements des moteurs diesel et certains de leurs composés sont reconnus par l'Etat de Californie pour être cancérigènes, provoquer des défauts congénitaux et d'autres dangers en matière de reproduction.



AVERTISSEMENT

L'émission du moteur de ce matériel contient des produits chimiques que l'Etat de Californie considère être cancérigènes, provoquer des défauts congénitaux et d'autres dangers en matière de reproduction.

California Advertencia
de la Proposicion 65

El estado de California hace saber que los gases de escape de los motores diesel y algunos de sus componentes producen cáncer, defectos de nacimiento y otros daños en el proceso de reproducción humana.



ADVERTENCIA

El estado de California hace saber que los gases de escape de este producto contienen productos químicos que producen cáncer, defectos de nacimiento y otros daños en el proceso de reproducción humana.

ROUGH CUT MOWER

IMPORTANT MESSAGE

Thank you for purchasing this Jacobsen product. You have purchased a world class product, one of the best designed and built anywhere.

This product comes with an Owner/Operator's Manual. The useful life and good service you receive from this product depends to a large extent on how well you read and understand this manual. Treat this product properly and adjust it as instructed, and it will give you many years of reliable service.

See a Jacobsen dealer for any service or parts needed. Jacobsen service ensures that you continue to receive the best results possible from Jacobsen products. You can trust Jacobsen replacement parts because they are manufactured with the same high precision and quality as the original parts.

Jacobsen designs and builds its equipment to serve many years in a safe and productive manner. For longest life, use this product only as directed in the manual, keep it in good repair and follow safety warnings and instructions. You'll always be glad you did.

Jacobsen, a Textron Company
One Bob Cat Lane
Johnson Creek, WI 53038-0469

TABLE OF CONTENTS	FIGURES	PAGE
DESCRIPTION / SPECIFICATIONS		2
SAFETY		3-6
DECALS		7
INSTALLATION		8, 9
OPERATION		10
SERVICE		11-13
MAIN FRAME	FIGURE 1	14, 15
PTO & DRIVE SHAFTS	FIGURE 2	16, 17
SPINDLE ASSY & DRIVE BELTS	FIGURE 3	18, 19
DECK ASSY & SHIELDS	FIGURE 4	20, 21
DECALS	FIGURE 5	22, 23

DESCRIPTION / SPECIFICATIONS

ROUGH
CUT
MOWER

DESCRIPTION

The RC466 Rough Cut Mower will cut through tall, dense growth and 1" woody stems. Free-swinging blades on discs all but eliminate shock load to the four spindles. Chains at the front opening allow unrestricted access for tall growth. Counter rotating disc blades move material freely to the rear discharge. Mounted on the front lift, this mower cuts the growth before it is pressed down by the tractor, and offers excellent visibility to your work.

SPECIFICATIONS

Overall Width	70"
Caster Wheels	13 X 5.00 - 6 foam filled (flat proof)
Mower Drive	PTO Belt
Spindles	Four cast iron housings, ball bearings
Cutting Width	66", offset 16" to right
Cutting Height	3-1/2" to 5-1/2"
Blades	Replaceable swinging blades on disc rotors
Discharge	Rear
Weight	550 lbs.

NOTICE !!!

Unauthorized modifications may present **extreme** safety hazards to operators and bystanders and could also result in product damage.

Jacobsen, a Textron Company strongly warns against, rejects and disclaims any modifications, add-on accessories or product alterations that are not designed, developed, tested and approved by Jacobsen Engineering Department. Any Jacobsen product that is altered, modified or changed in any manner not specifically authorized after original manufacture—including the addition of “after-market” accessories or component parts not specifically approved by Jacobsen—will result in the Jacobsen Warranty being voided.

Any and all liability for personal injury and/or property damage caused by any unauthorized modifications, add-on accessories or products not approved by Jacobsen will be considered the responsibility of the individual(s) or company designing and/or making such changes. Jacobsen will vigorously pursue full indemnification and costs from any party responsible for such unauthorized post-manufacture modifications and/or accessories should personal injury and/or property damage result.



This symbol means:
ATTENTION!
BECOME ALERT!

Your safety and the safety of others is involved.

Signal word definitions:

The signal words below are used to identify levels of hazard seriousness. These words appear in this manual and on the safety labels attached to Jacobsen machines. For your safety and the safety of others, read and follow the information given with these signal words and/or the symbol shown above.

DANGER

DANGER indicates an imminently hazardous situation which, if not avoided, **WILL** result in death or serious injury.

WARNING

WARNING indicates a potentially hazardous situation which, if not avoided, **COULD** result in death or serious injury.

CAUTION

CAUTION indicates a potentially hazardous situation which, if not avoided, **MAY** result in minor or moderate injury. It may also be used to alert against unsafe practices or property damage.

CAUTION

CAUTION used without the safety alert symbol indicates a potentially hazardous situation which, if not avoided, **MAY** result in property damage



MODEL NUMBER: This number appears on sales literature, technical manuals and price lists.

SERIAL NUMBER: This number appears only on your mower. It contains the model number followed consecutively by the serial number. Use this number when ordering parts or seeking warranty information.

GENERAL SAFETY

- | | |
|--|--|
| <ul style="list-style-type: none">• Read and understand the owner’s manual, before attempting to operate this machine.• Operate all controls from the operator’s seat, (if so equipped). NO RIDERS.• Keep all shields in place and safety switches adjusted properly.• Do not leave equipment unattended. STOP the engine and remove the key (if so equipped).• Do not allow minors or the inexperienced to operate this machine. | <ul style="list-style-type: none">• Never allow anyone to operate or service this machine while under the influence of alcohol or drugs.• Keep people and pets a safe distance away from machines using power driven attachments. Injury could result from flying debris.• Wear all the necessary protective clothing and personal safety devices to protect your head, eyes, ears, hands, and feet.• Operate the machine only in daylight or in good artificial light. |
|--|--|

SAFE OPERATION PRACTICES FOR MOWERS

WARNING

This cutting machine is capable of amputating hands and feet and throwing objects. Failure to observe the following safety instructions could result in serious injury or death.

I GENERAL OPERATION

1. Read, understand, and follow all instructions in the manual and on the machine before starting.
2. Only allow responsible adults, who are familiar with the instructions, to operate the machine.
3. Clear the area of objects such as rocks, toys, wire, etc., which could be picked up and thrown by the blade.
4. Be sure the area is clear of other people before mowing. Stop the machine if anyone enters the area.
5. Never carry passengers.
6. Do not mow in reverse unless absolutely necessary. Always look down and behind before and while backing.
7. Slow down before turning.
8. Never leave a running machine unattended. Always turn off blades, set parking brake, stop engine, and remove keys before dismounting.
9. Turn off blades when not mowing.
10. Stop engine before unclogging or cleaning under deck.
11. Mow only in good light, keeping away from holes and hidden hazards.
12. Do not operate the machine while under the influence of alcohol or drugs.
13. Watch for traffic when operating near or crossing roadways.

14. Use extra care when loading or unloading the machine into a trailer or truck.

15. Always wear safety goggles or safety glasses with side shields when operating mower.

II SLOPE OPERATION

WARNING

Slopes are a major factor related to loss-of-control and tip-over accidents, which can result in severe injury or death. All slopes require extra caution. If you feel uneasy on it, do not mow it.

DO:

- Mow up and down slopes where possible.
- Remove obstacles such as rocks, tree limbs, etc.
- Watch for holes, ruts, or bumps. Uneven terrain could overturn the machine. Tall grass can hide obstacles.
- Use slow speed (low range). Do not attempt to shift while on the slope.
- Follow the manufacturers recommendations for wheel weights or counterweights to improve stability.
- Keep all movement on the slope slow and gradual. Do not make sudden changes in speed or direction.
- Avoid stopping or starting on a slope. If tires lose traction, disengage the blades and proceed slowly straight down the slope.

DO NOT:

- Do not turn on slopes unless necessary, and then, turn slowly and gradually downhill, if possible.
- Do not mow drop-offs, ditches, or embankments. The mower could suddenly turn over if a wheel is over the edge of a cliff or ditch, or if an edge caves in.
- Do not mow on wet grass. Reduced traction could cause sliding.
- Do not try to stabilize the machine by putting your foot on the ground.

III CHILDREN

WARNING

Tragic accidents can occur if the operator is not alert to the presence of children. Children are often attracted to the machine and the mowing activity. Never assume that children will remain where you last saw them.

1. Keep children out of the mowing area and under the watchful eye of another responsible adult.
2. Be alert and turn machine off if children enter the area.
3. Before and when backing, look behind and down for small children.
4. Never carry children as passengers, even with the blades turned off. They may suddenly fall off and be seriously injured or interfere with safe machine operation.
5. Never allow children to operate the machine.
6. Use extra care when approaching blind corners, shrubs, trees, or other objects that may obscure vision.

IV SERVICE

1. Use extra care in handling gasoline and other fuels. They are flammable and the vapors are explosive.
 - a. Use only an approved container.
 - b. Never remove gas cap or add fuel with engine running. Allow engine to cool before refueling. Do not smoke.
 - c. Never refuel or drain the machine indoors.
 - d. Never store the machine or fuel container inside where there is an open flame, such as in a water heater.
2. Never run the machine in a closed area.
3. Keep nuts and bolts, especially blade attachment bolts, tight and keep equipment in good condition.
4. Never tamper with safety devices. Check their proper operation regularly.
5. Keep machine free of grass, leaves, and other debris build-up. Clean up oil or fuel spillage. Allow machine to cool before storing.
6. Stop and inspect the equipment if you strike an object. Repair, if necessary, before restarting.
7. Never make adjustments or repairs with the engine running.
8. Frequently check components and replace with manufacturer's recommended parts, when necessary.
9. Mower blades are sharp and can cut. Wrap the blade(s) or wear gloves, and use extra caution when servicing them.



WARNING

**BEFORE OPERATING THIS MACHINE
READ AND UNDERSTAND
THE OPERATOR'S MANUAL.
KEEP ALL SHIELDS IN PLACE
AND FOLLOW ALL SAFETY RULES.**

00-093

Location: On mower deck right rear.



WARNING

**KEEP HANDS AWAY FROM BELT
WHILE ENGINE IS RUNNING**

00-025

Location: On drive belt shield.



WARNING

**KEEP ALL SHIELDS IN PLACE
DO NOT OPERATE UNIT WITH
THIS SHIELD REMOVED**

00-280

Location: On mower drive line shield.



DANGER

KEEP HANDS AND FEET AWAY



00-092

Location: On mower deck top front center and both sides.



DANGER

ROTATING BLADES

**LOOK AND LISTEN FOR EVIDENCE OF ROTATION.
DO NOT REMOVE SHIELDS OR ATTEMPT TO SERVICE
UNIT UNTIL ALL COMPONENTS HAVE STOPPED.**

00-138

Location: On mower deck top left and right shields.

ATTACHING MOWER TO TRACTOR:

- Operate latch control to open hitch latches.
- Drive tractor into position aligning the quick hitch.
- Be sure both latches engage fully and are placed in the locked position.
- **Stop engine!** Do not attempt to install drive belt with engine running.
- Release idler assembly to facilitate easy installation of the drive belt.
- Put belt over drive pulleys and engage or adjust idler assembly.
(See Power Unit Operator's Manual for PTO belt tension adjustments.)
- Move hitch stand to transport position. Set mower to desired cutting height.
- Start engine and engage PTO slowly to prevent shock load on mower components.
- Mow with front lift lever in "FLOAT" position only.

DRIVE BELT CHART

POWER UNIT MODEL	DRIVE BELT
220/230 230 DIESEL	81-A040 81-B041
410 (THIS UNIT IS NOT RECOMMENDED)	
420/430	81-A040
425	81-B041
525	81-B041

REAR WEIGHT REQUIREMENTS

The table of requirements for rear weights is based upon average mowing conditions and operator's weight of 150 lbs. The recommendations may vary with the weight of the operator, other accessories, and the mowing conditions. It is the operator's responsibility to determine the correct amount of weight needed to improve stability. All weights must be removed when the mower is removed.

POWER UNIT MODEL	ROUGH CUT DECK
220/230 230 DIESEL	2 WEIGHTS
410 (THIS UNIT IS NOT RECOMMENDED)	
420/430	6 WEIGHTS
425	4 WEIGHTS
525 *	4 WEIGHTS

* IF EQUIPPED WITH A CB525 CAB, NO WEIGHTS ARE REQUIRED.

OPERATING PRECAUTIONS

Observe all Safety Decals.

Keep all Shields in place.



Do not operate mower with other persons in the area. Irregularities in ground surface can permit foreign material to be propelled from beneath deck to cause serious injury or death.

Before leaving tractor, move Forward - Reverse control to neutral position, disengage PTO, set parking brake, lower mower deck and stop engine.

Remove key from ignition if maintenance procedures are to be performed or tractor is to be left unattended.

OPERATING INSTRUCTIONS

Set mower cutting height. There are two levers **G** to adjust. It is recommended that both levers are moved to the same position as shown.

Cutting Height:

Lowest position = Approximately 3-1/2 inches

Center position = Approximately 4-1/2 inches

Highest position = Approximately 5-1/2 inches

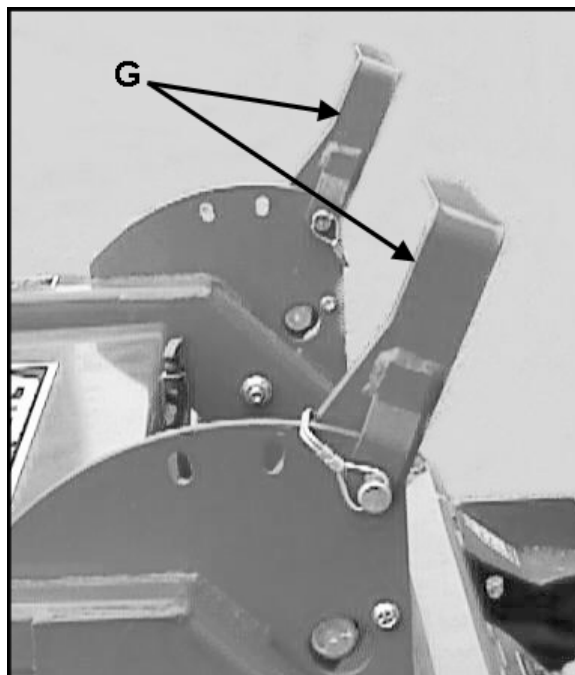
Mow with front lift lever in "FLOAT" position only. Engage PTO slowly at low engine rpm. Mower is designed to operate at full throttle for heavy mowing.

Set mower blade speed with the throttle and control ground speed with the Forward - Reverse control.

Use caution when operating on hills or slopes. Mow up and down hills or slopes whenever possible.

Use slow forward speed and extreme care when mowing dense tall growth and/or woody stems for the first time. Be aware of hidden obstacles, such as rocks or other debris, that could damage the mower.

Do not operate mower with blades missing. This causes an imbalance and may damage deck or components.



Mower Height adjustment levers.

MAINTENANCE

Daily maintenance:

- Visual inspection for loose parts and accumulation of grass and dirt.
- Clean accumulation of grass clippings from beneath deck daily for better mowing performance.
- Check 1/4" cap screws on pulley bushings and spindle disks. On the spindle disk bushings, 277 red Loctite or equivalent should be used if the bolts are loose or are removed and re-installed. Torque should be 8-10 foot pounds. Tighten these cap screws in alternating sequence 10-12 times to assure equal torque on all cap screws.
- Keep blades sharp. Check the tips of the blades for wear.
- Check all blade mounting bolts for wear and all blades for wear at the attaching holes. If blades are removed, use 277 red Loctite or equivalent on the attaching bolts upon re-assembly and torque to 95 ft. lbs.

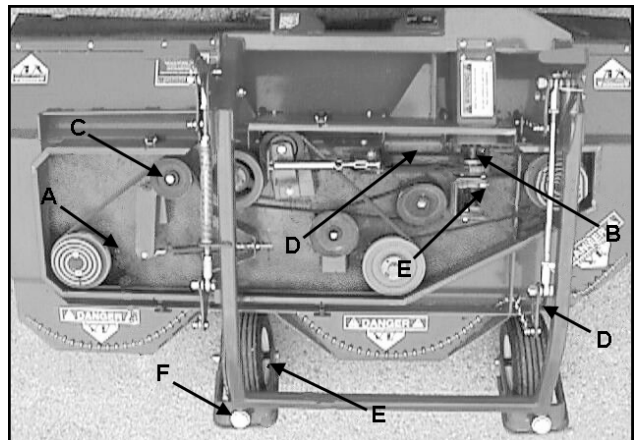
NOTE: If blade attaching holes become worn the blades may strike the deck edges or another blade on the next spindle.

25 hour maintenance:

- In addition to daily maintenance, grease all spindles **A** (4 places), u-joints **B** (3 places), idlers **C**, pivot points **D**, bearings **E** and casters **F** (2 places).
- Check spindle drive belts for proper tension. See Drive Belt Installation on Page 8.

Annual Maintenance:

- In addition to daily and 25 hour maintenance, remove the drive belts and check for cracks or wear. Rotate each spindle to check for roughness which would indicate bearing wear. Remove and sharpen blades, clean and wash deck prior to storage. The acid in grass clippings causes premature corrosion and rusting of mower parts.



NOTE: It is necessary to remove the drive shaft shield and drive pulley shield to lubricate the drive line.

ADJUSTMENTS

Sharpening blades:

Be careful while sharpening blades that the corners of the blade do not become rounded at the tips. This reduces the blades overlap and will cause skipping. Blades are reversible for extended wear. Simply flip over to use a new cutting edge.

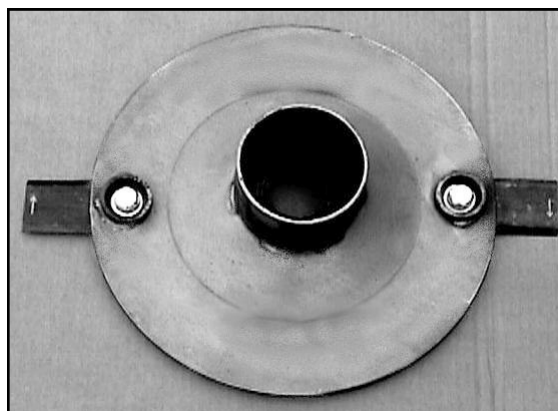
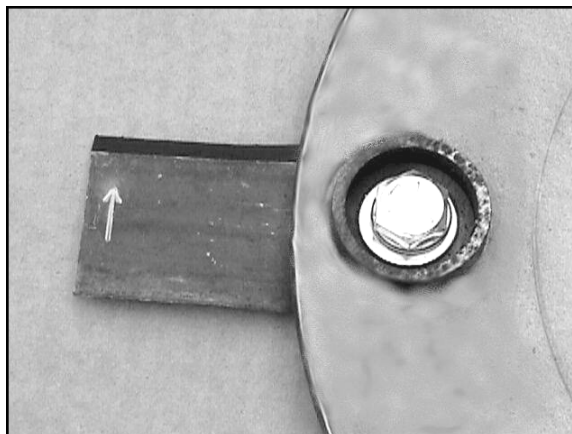
When installing new or sharpened blades be certain to replace right blades and left blades on the proper spindles. Blades are marked with an arrow to show proper rotation. When installed correctly this arrow is toward the top.

NOTE: Another arrow is visible when viewed from beneath the deck but points in the wrong direction, since arrows are imprinted on both sides of the reversible blades as shown. Check the mating surfaces and the attaching hardware for wear or damage. Replace any worn or damaged parts.

These photos show the correct installation of right blades on a clockwise rotating spindle as viewed from the top.

The front two spindles rotate counterclockwise and the rear two spindles rotate clockwise.

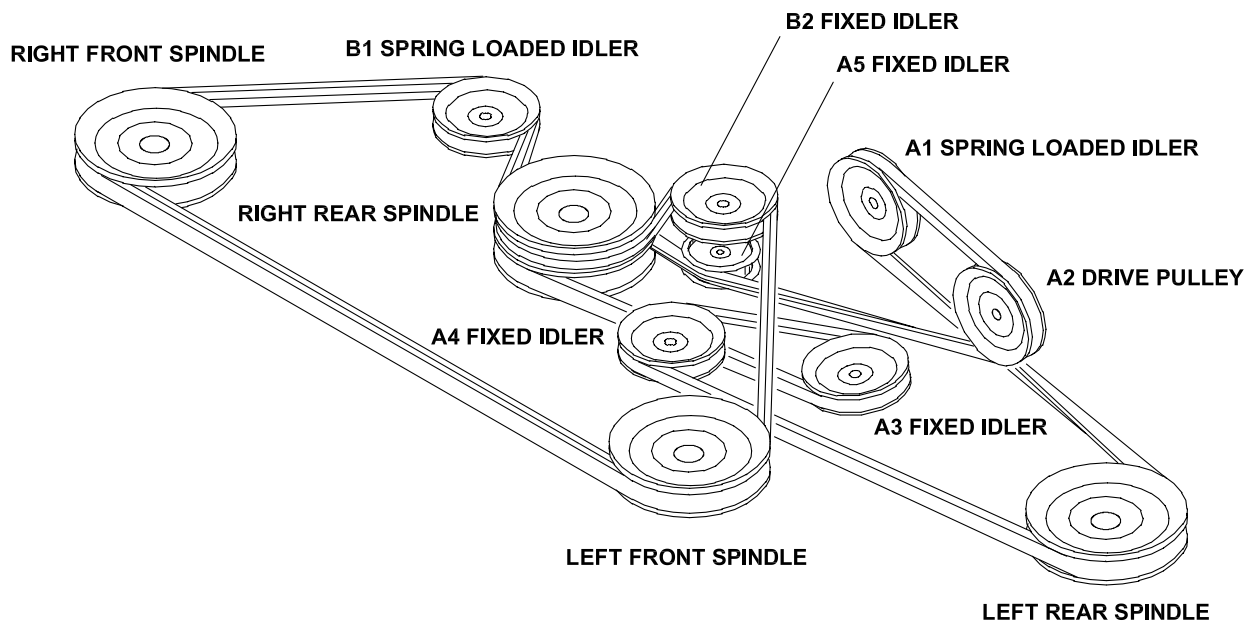
NOTE: Disk has been removed and arrows enhanced to show arrow location.



LEVELING MOWER DECK

With deck mounted on the tractor, the front to rear leveling adjustment is provided by slots where the support chains are attached to the deck. This allows each side to be adjusted independently. Check the blade level with mower resting on a level floor and the cutting height set at center setting, (about 4-1/2"). Measure at left spindle to the disk blade mounting area at the rear, then rotate disk 180 degrees and measure again to the disk blade mounting area at the front. The height should be equal or 1/8 inch lower at the front. Change adjustment in the left slots as required and measure again until proper setting is reached. Repeat procedure for spindle at right end of the deck and adjust right slots. Cutting height from right to left side should not vary more than 1/4 inch. Side to side leveling is done with the adjustment pivot tie rods. (See Fig. 1, Items 14 and 16 of Parts Section) Disconnect a tie rod end and lengthen or shorten rod as needed to bring the side to side leveling to within the 1/4 inch range.

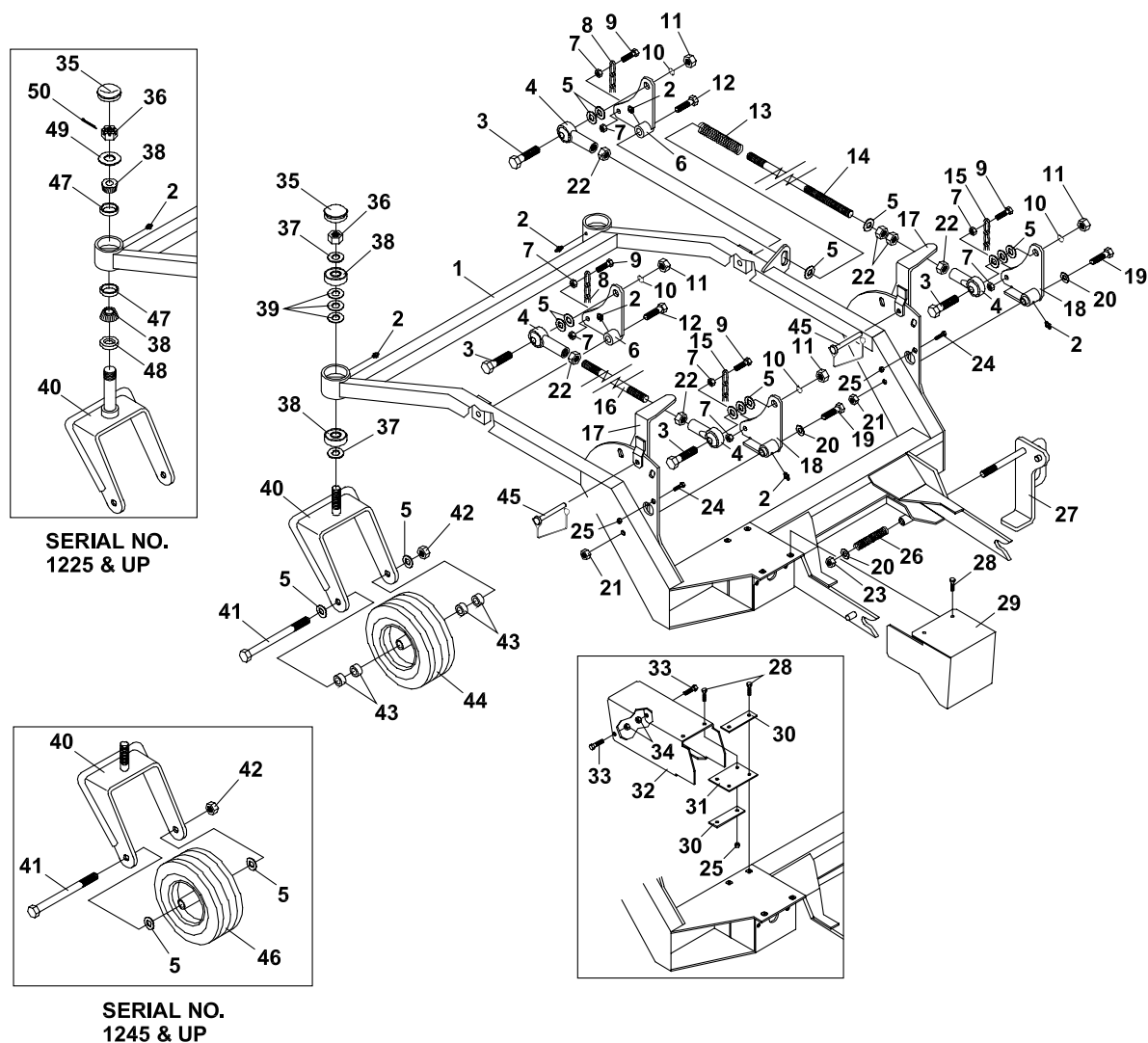
1. Raise deck to the highest cutting height and remove top shields.
2. Remove drive shaft shield. Remove the front u-joint from the drive shaft and slide it back.
3. Remove springs from the **A1** and **B1** spring loaded idlers.
4. Remove the belt that drives the front spindles.
5. Remove the belt that drives the rear spindles.
6. Refer to the illustration below and start installing the rear spindle drive belt. Loop the belt around the right rear spindle and place it in the bottom groove of the triple groove pulley. Proceed to the **A3** fixed idler, then loop around the **A4** fixed idler. Proceed to the left rear spindle, then around the **A1** spring loaded idler. Make a final loop around the drive pulley. Be sure the belt is positioned on the front side of the **A5** fixed idler as shown. Do not connect spring until the second belt is installed.
7. Replace the u-joint on the drive shaft and install the drive shaft shield.
8. Refer to the illustration and install the front spindle drive belt. This is a double sided belt and does not have any twists in it.
9. Connect the spring to the **A1** spring loaded idler. Choose a link that will stretch spring to a length of 7-1/2 to 7-3/4 inches when installed.
10. Connect the spring to the **B1** spring loaded idler. Choose a link and/or adjust eyebolt to stretch spring to a length of 7-3/4 to 8 inches when installed.
11. Replace top shields and adjust to the desired cutting height.



MAIN FRAME

ROUGH CUT MOWER

FIGURE 1



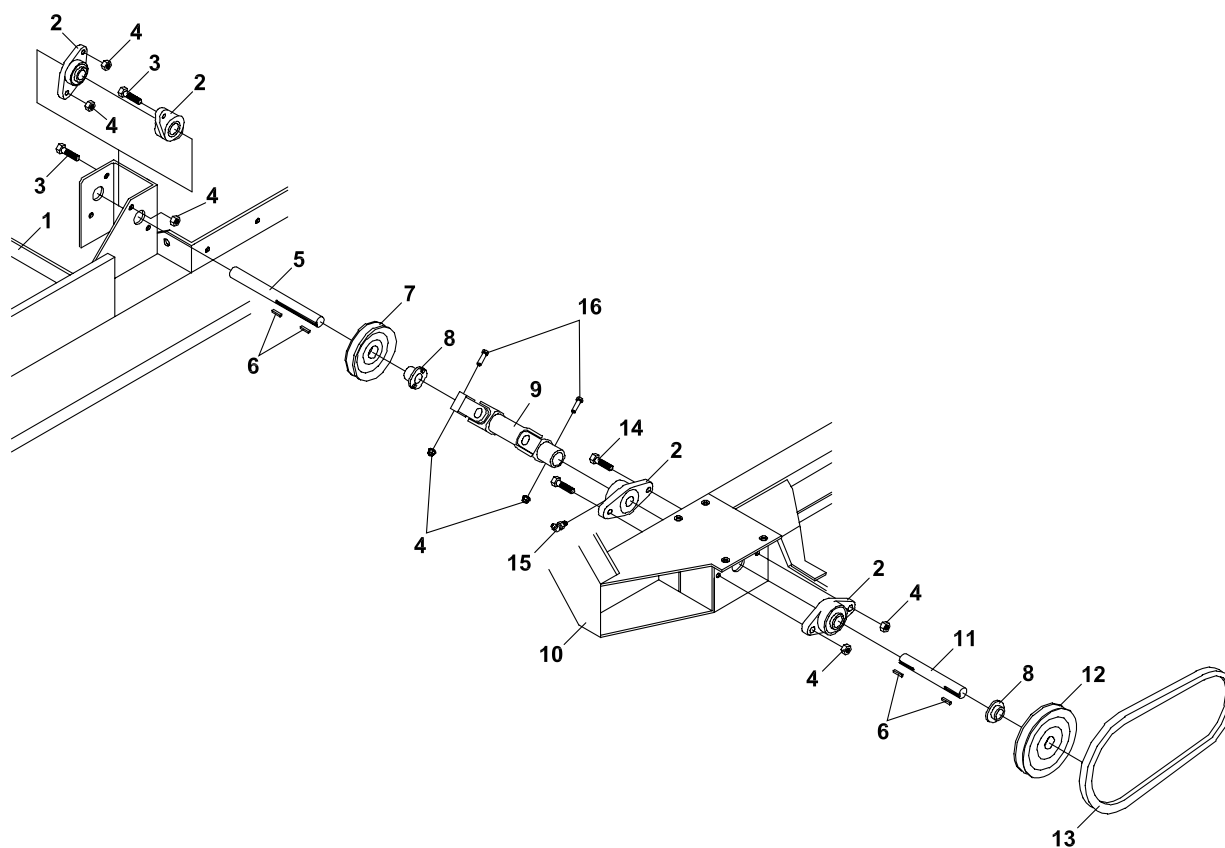
ROUGH CUT MOWER

MAIN FRAME

FIGURE 1

ITEM	PART NO.	DESCRIPTION	QTY	ITEM	PART NO.	DESCRIPTION	QTY
1-1	6105106.7	MAIN FRAME	1	1-37	64163-06	WSHR-.768/.756X1.25X14	4
1-2	29-010	GREASE FITTING,1/4-28	6	1-38	55-Z9504AB	BALL BRG-3/4 ID	4
1-3	90-1016	BOLT,5/8-11 X 2	4		(SN 1001 - 1224)		
1-4	4132296	ROD END - 5/8	4		48043-04C	CONE, OUTER BEARING	4
1-5	64163-16	WASHER-41/64 X 1-3/8 X 12			(SN 1225 -)		
		(QTY 4 USED WITH SN 1001 - 1244)					
		(QTY 16 USED WITH SN 1245 -)		1-39	99-B20	WASHER	6
					(SN 1001 - 1224)		
1-6	6105064.7	FRONT LIFT PIVOT	2	1-40	6111130	CASTER FRAME	2
1-7	64141-4	NUT-WLF 3/8-16	8	1-41	90-1060	BOLT	2
1-8	6105069	LIFT CHAIN FRONT	2	1-42	64229-06	LOCKNUT, NYLON 5/8-11	2
1-9	64123-16	BLT-HEX 3/8-16X1-1/4	4	1-43	6112062	SPACER	8
1-10	64006-04	LOCKWASHER-5/8	4		(SN 1001 - 1244)		
1-11	64025-21	NUT-HEX 5/8-11	4				
1-12	99-K35	BOLT-SHOULDER 5/8X1-1/4	2	1-44	53-168	WHEEL-W/13 X 5 X 6 TIRE	2
1-13	41-084	LIFT SPRING-RIGHT	1		(SN 1001 - 1244)		
1-14	6105029	PIVOT TIE ROD-RH	1		55-107	BEARING	2
1-15	6105058	CHAIN, REAR LIFT	2				
1-16	6105097	PIVOT TIE ROD, LH	1	1-45	03-018	PIN-SFTY SNAP 3/8 X 2-1/4	2
1-17	6105020.7	HEIGHT ADJ HANDLE	2	1-46	53-185	WHEEL-W/13 X 5 X 6 TIRE	2
1-18	6105038.7	REAR LIFT PIVOT	2		(SN 1245 -)		
1-19	90-0836	BOLT-1/2 X 4-1/2	2		53-188	RETAINER	2
1-20	64163-67	WASHER-.516X1X12	3		55-113	BEARING	1
1-21	64141-13	NUT WLF 1/2-13	2		55-114	BEARING	1
1-22	99-E11	NUT, STEERING VALVE	6				
1-23	64229-05	LOCKNUT, 1/2-13 NYLON	1	1-47	48043-03C	CUP, OUTER BEARING	4
1-24	64139-02	BLT-WLF 1/4-20X1/2	2		(SN 1225 -)		
1-25	64141-2	NUT-WLF 1/4-20	4				
1-26	41-081	SPRING	1	1-48	89-017	SEAL	2
1-27	6105057.7	MOWER STAND WLDMT	1		(SN 1225 -)		
1-28	64139-04	BOLT-WLF 1/4-20X3/4	6				
1-29	6105009.7	GUARD, BELT DRIVE	1	1-49	64163-64	WSHR 1.015X1.500X14	2
1-30	6105068.7	BACKING PLATE	2		(SN 1225 -)		
1-31	6105085	HINGE, BELTING	1				
1-32	6105072.7	SHIELD, PTO	1	1-50	02-CP0410	COTTER PIN, 1/8 X 1-1/4	2
1-33	99-23	BOLT, 5/16-18 X 1/2	2		(SN 1225 -)		
1-34	64141-6	NUT, 5/16-18	2				
1-35	53-060	DUST CAP	2				
		(SN 1001 - 1224)					
	53-068	HUB CAP	2				
		(SN 1225 -)					
1-36	99-AC12NFNUT, 3/4		2				
		(SN 1001 - 1224)					
	99-E19	CASTLE NUT, 1-14	2				
		(SN 1225 -)					

FIGURE 2



ROUGH CUT MOWER

PTO & DRIVE SHAFTS

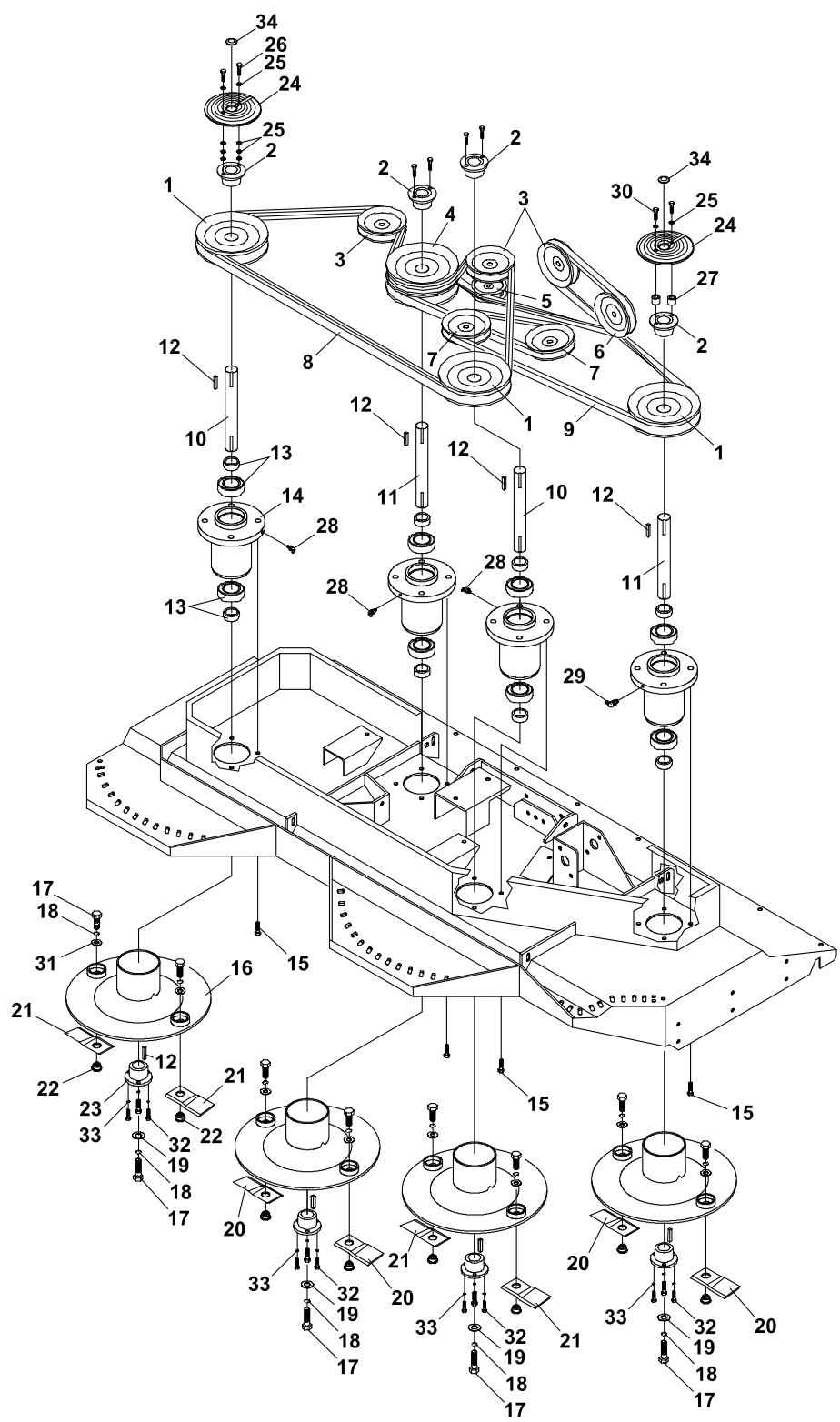
FIGURE 2

ITEM	PART NO.	DESCRIPTION	QTY	ITEM	PART NO.	DESCRIPTION	QTY
2-1	6105087.7	DECK WLDMT	1				
2-2	55-FB23012	BEARING	4				
2-3	64123-50	BOLT-HEX 3/8-16X1	4				
2-4	64141-4	NUT-WLF 3/8-16	8				
2-5	6105082	SHAFT-SECONDARY	1				
2-6	64164-02	KEY 3/16X3/16X1 SQ	4				
2-7	83-BK40H	PULLEY, 4"	1				
2-8	83-H12	BUSHING	2				
2-9	87-222	SHAFT-DRIVE PTO ASSY	1				
2-10	6105106.7	MAIN FRAME	1				
2-11	6105081	SHAFT-PRIMARY	1				
2-12	83-BK50H	PULLEY-5"	1				
2-13	81-A040	BELT	1				
2-14	99-K73	BOLT-3/8-16 X 1-1/2	2				
2-15	29-045	GREASE FT-1/4-28 45-DEG	1				
2-16	64123-70	BOLT-HEX 3/8-16X1-1/2	2				

SPINDLE ASSY & DRIVE BELTS

ROUGH
CUT
MOWER

FIGURE 3



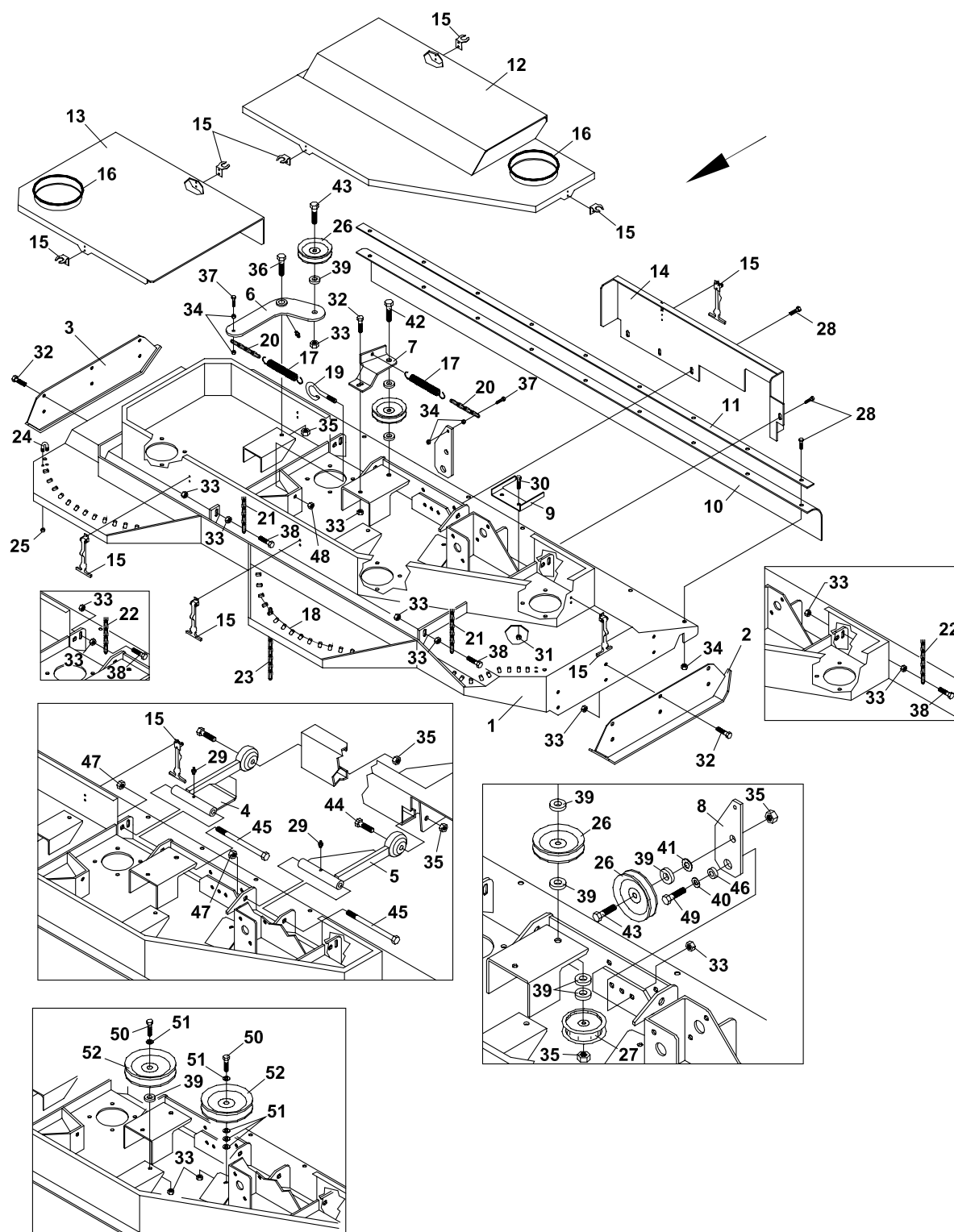
ROUGH CUT MOWER

SPINDLE ASSY & DRIVE BELTS

FIGURE 3

ITEM	PART NO.	DESCRIPTION	QTY	ITEM	PART NO.	DESCRIPTION	QTY
3-1	83-BK65H	PULLEY-6.5"	3				
3-2	83-H18	BUSHING	4				
	64123-89	BOLT-HEX 1/4-20X3/4	8				
3-3	83-012	PULLEY, IDLER	3				
3-4	83-3BK65H	SHEAVE	1				
3-5	D2902	SHEAVE	1				
3-6	83-BK40H	PULLEY-4"	1				
3-7	83-034	IDLER	2				
3-8	81-AA96	BELT-AA96 DOUBLE-V	1				
3-9	81-A144	BELT-A144 HY-T	1				
3-10	6105032	SPINDLE-FRONT	2				
3-11	6105033	SPINDLE-REAR	2				
3-12	64164-10	1/4X1/4X1-1/4 MACH KEY	8				
3-13	55-RA102RR	1-1/8 BRG AND COLLAR	8				
3-14	141004	SPINDLE	4				
3-15	99-K62	BOLT-5/16-18 X 1-1/4	16				
3-16	6105065.7	BLADE DISC	4				
3-17	90-0808	BOLT	12				
3-18	64006-05	LOCKWSHR-HELICAL 1/2	12				
3-19	94-08	FLAT WASHER, 1/2	4				
3-20	79-105	BLADE-RH	4				
3-21	79-121	BLADE-LH	4				
3-22	99-E53	NUT	8				
3-23	83-SH18	BUSHING	4				
3-24	60-568.7	SUPPORT PLATE	2				
	00-137	DECAL-SPIRAL INDICATOR	2				
3-25	64163-03	WSHR-.256ID X.62OD X 18	8				
3-26	99-K77	BOLT	2				
3-27	6105079	SPACER	2				
3-28	29-122	GREASE FTG-1/4 45 DEG.	3				
3-29	29-014	GREASE FTG-1/4 90 DEG.	1				
3-30	99-K39	BOLT, 1/4-20 X 1-1/2	2				
3-31	64163-67	WASHER-.516X1X12	8				
3-32	64123-114	BOLT-HEX 1/4-20X1	12				
3-33	64006-01	LOCKWASHER-1/4	12				
3-34	06-010	CAP PLUG-1"	2				

FIGURE 4



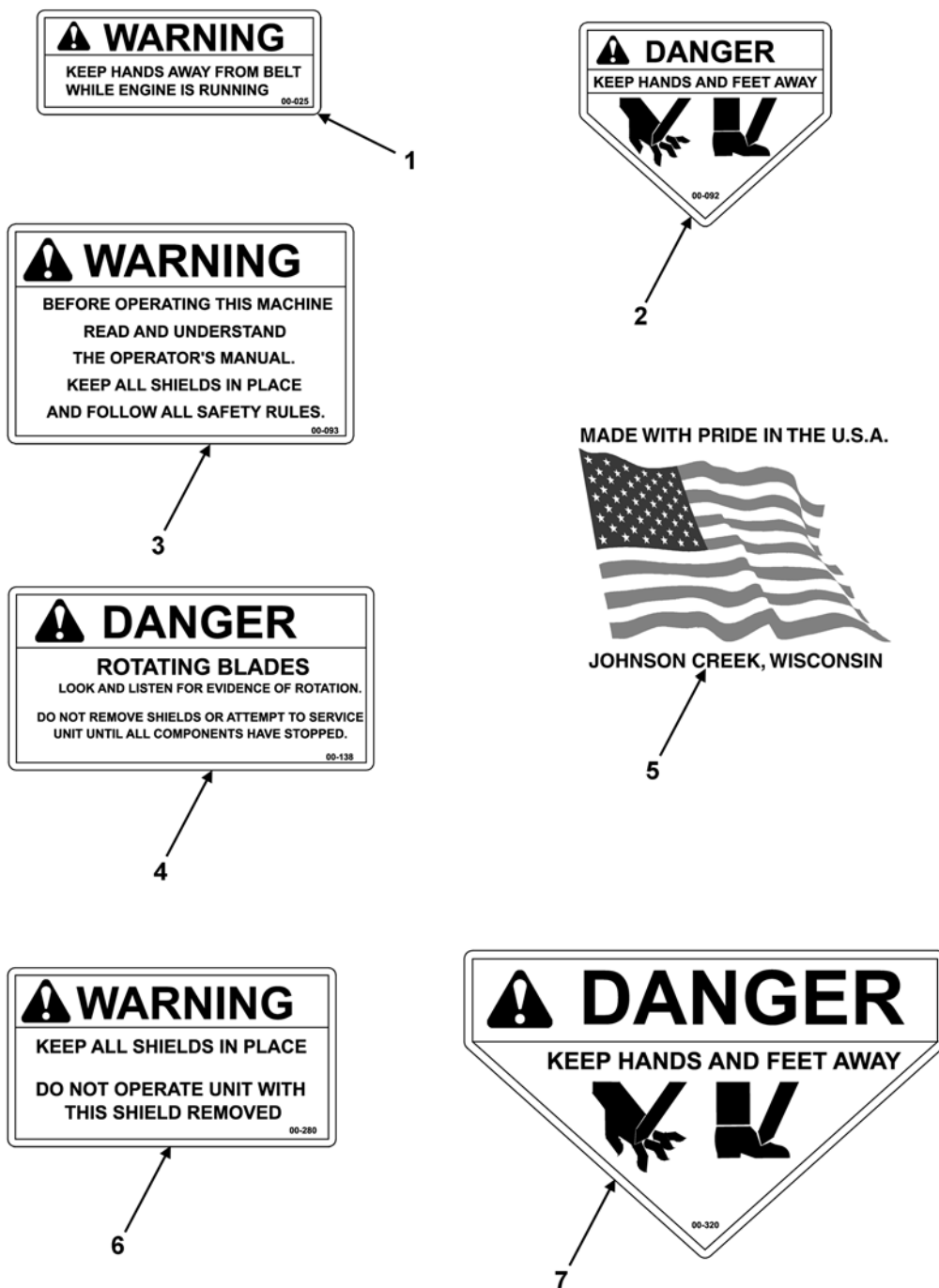
ROUGH CUT MOWER

DECK ASSY & SHIELDS

FIGURE 4

ITEM	PART NO.	DESCRIPTION	QTY	ITEM	PART NO.	DESCRIPTION	QTY
4-1	6105087.7	MAIN DECK	1	4-41	64163-67	WASHER-.516X1X12	3
4-2	6105077.7	SKID SHOE-LFT	1	4-42	90-0826	BOLT,1/2-13 X 3-1/4	1
4-3	6105076.7	SKID SHOE-RT	1	4-43	64123-117	BOLT-HEX 1/2-13X1-1/2	2
4-4	6105062.7	RIGHT STRUT	1	4-44	64123-24	BLT-HEX 1/2-13X2	2
4-5	6105063.7	LEFT STRUT	1	4-45	90-0856	BOLT,1/2-13 X 7	2
4-6	6105101.7	ARM, SECONDARY IDLER	1	4-46	85-B29	BUSHING	1
4-7	6105075.7	STABILIZER, IDLER	1	4-47	64229-05	LOCKNUT, 1/2-13 NYLON	2
4-8	6105005.7	IDLER ARM	1	4-48	64229-03	LOCKNUT-NYLON 3/8-16	1
4-9	6105080.7	PTO GUARD RUB RAIL	1	4-49	64123-50	BOLT-HEX 3/8-16X1	1
4-10	6105066	BELTING, DISCHARGE	1	4-50	64123-70	BOLT-HEX 3/8-16X1-1/2	2
4-11	6105071.7	PLATE, BELTING BACKING	1	4-51	64163-61	WSHR .81X.406X16	5
4-12	6105078.7	SHIELD, LEFT TOP	1	4-52	83-034	IDLER PULLEY	2
4-13	6105096.7	SHIELD, TOP RIGHT	1				
4-14	6105095.7	SHIELD, REAR	1				
4-15	47-090	LATCH-RUBBER 3" LONG	5				
4-16	56-059-16	TRIM-LOC 16"	2				
4-17	41-051	SPRING	2				
4-18	45-071	CABLE	1				
4-19	99-K18	EYE-BOLT, 3/8 X 3-7/8	1				
4-20	6105067	CHAIN-IDLER TENSION	2				
4-21	6105069	LIFT CHAIN FRONT	2				
4-22	6105058	CHAIN, REAR LIFT	2				
4-23	6105070.7	GUARD-CHAIN	71				
4-24	G8047	CLIP-3/16 WIRE ROPE	2				
4-25	64229-01	LOCKNUT-1/4-20 NYLON	4				
4-26	83-012	PULLEY, IDLER	3				
4-27	D2902	SHEAVE, BELT IDLER	1				
4-28	64139-04	BOLT-WLF 1/4-20X3/4	13				
4-29	29-010	GREASE FTG-1/4-28	3				
4-30	64139-08	BOLT-5/16-18X3/4	2				
4-31	64141-6	NUT, 5/16-18	2				
4-32	64139-21	BLT-WLF 3/8-16X3/4	13				
4-33	64141-4	NUT-WLF 3/8-16	25				
4-34	64141-2	NUT-WLF 1/4-20	13				
4-35	64141-13	NUT WLF 1/2-13	6				
4-36	99-K35	BOLT	1				
4-37	64123-114	BOLT-HEX 1/4-20X1	2				
4-38	64123-16	BLT-HEX 3/8-16X1-1/4	2				
4-39	99-B12	SPACER	7				
4-40	64-799	WASHER, 13/32 ID X 1-9/32	1				

FIGURE 5



ROUGH CUT MOWER

DECALS

FIGURE 5

ITEM	PART NO.	DESCRIPTION	QTY	ITEM	PART NO.	DESCRIPTION	QTY
5-1	00-025	DECAL-KEEP HANDS	1				
5-2	00-092	DECAL-HANDS & FEET	2				
5-3	00-093	DECAL-RD OWNERS MAN	1				
5-4	00-138	DECAL-ROTATING BLADES	2				
5-5	4116761	DECAL-MADE IN THE USA	1				
5-6	00-280	DECAL-KEEP GUARD IN PL	1				
5-7	00-320	DECAL-KEEP HANDS LRG	3				

World Class Quality, Performance And Support



Equipment from Jacobsen, a Textron company, is built to exacting standards ensured by ISO 9001 and ISO 14001 registration at all our manufacturing locations.

A worldwide dealer network and factory-trained technicians backed by Textron Parts Xpress provide reliable, high-quality product support.



BOB-CAT BROWER BUNTON CUSHMAN RYAN STEINER