

SETUP, PARTS & MAINTENANCE MANUAL 3 BAG CATCHER

MODELS:

970324 3 BAG CATCHER, 52

970326 3 BAG CATCHER, 61



WARNING: If incorrectly used this machine can cause severe injury. Those who use and maintain this machine should be trained in its proper use, warned of its dangers and should read the entire manual before attempting to set up, operate, adjust or service the machine.

Contents

Section 1	1-1
Safety Information.	1-1
Torque Specifications	1-2
 Section 2	 2-1
3-Bag Catcher Assembly Illustration	2-2
3-Bag Catcher Assembly Parts List.	2-3
 Section 3	 3-1
Blower Assembly Illustration	3-2
Blower Assembly Parts List	3-3
 Section 4	 4-1
Catcher Mount Installation Illustration	4-2
Catcher Mount Installation Parts List & Installation Instructions	4-3
 Section 5	 5-1
Blower Installation Illustration	5-2
Blower Installation Parts List & Installation Instructions	5-3
 Section 6	 6-1
Weight Installation Illustration	6-2
Weight Installation Parts List & Installation Instructions	6-3

Section 1

Safety Information

NOTICE!!!

Unauthorized modifications may present extreme safety hazards to operators and bystanders and could also result in product damage.

The manufacturer strongly warns against, rejects, and disclaims any modifications, add-on accessories or product alterations that are not designed, developed, tested, and approved by the original equipment manufacturer. Any product that is altered, modified, or changed in any manner not specifically authorized after original manufacture including the addition of "after-market" accessories or component parts not specifically approved for use by the original equipment manufacturer will result in the product warranty being voided.

Any and all liability for personal injury and/or property damage caused by any unauthorized modifications, add-on accessories, or products not approved by the original equipment manufacturer will be considered the responsibility of the individual(s) or company designing and/or making such changes. This manufacturer will vigorously pursue full indemnification and costs from any party responsible for such unauthorized post-manufacture modifications and/or accessories should personal injury and/or property damage result.

OPERATING SAFELY

Do not operate the machine without either the discharge chute or the grass catcher fully installed.

Stop the engine, disengage the PTO and wait until the blades quit rotating before removing the grass catcher.

Stop the engine, disengage the PTO, and disconnect the spark plug wires or remove the key when stopping operation to clear blockages, unclog, inspect the attachment, or do maintenance or repair.

If the machine begins to vibrate abnormally or make abnormal sounds stop the engine, disengage the PTO, and disconnect the spark plug wires. Inspect the attachment and have necessary repairs preformed by a qualified technician.

Use extra care with grass catchers. These attachments can change the stability of the machine as well as dynamically altering the stability during operation. Read and understand all operation and safety precautions associated with operating your machine on slopes and in other hazardous conditions. Do not attempt to exceed these recommendations with your grass collection system attached.

Only operate the catcher attachment with all guards and counter-balance weights fully installed.

Inspect grass catcher components regularly. If worn, damaged or deteriorated, they may expose moving parts or allow objects to be thrown.

Mow only in daylight.

Check operator presence interlock system and brake operation prior to each days use. Adjust or repair any problems before using.

Clear the area to be mowed of objects such as rocks, toys, wire, or other debris that may be picked up or thrown by the catcher.

Be sure the area is clear of pets and people, especially young children. Never assume they will remain where you last saw them. Stop the machine if any enter the area.

Evaluate the terrain to determine if the machine can safely perform the job. Remember that slopes and irregular terrain may cause tires to lose traction resulting in loss of control. Use extreme caution on wet grass, as this will increase the risk.

Note: When ordering parts, you must use the part number as shown for each part, not the index number. Always give the model and serial number to your parts and/or service representative.

Illustrations used were current at the time of printing, but subsequent production changes may cause your catcher to vary slightly in detail. Humboldt Specialty Manufacturing Company reserves the right to redesign and change the catcher as deemed necessary, without notification. If a change has been made to your catcher which is not reflected in this parts manual, see your dealer for current information and parts.

Torque Specifications

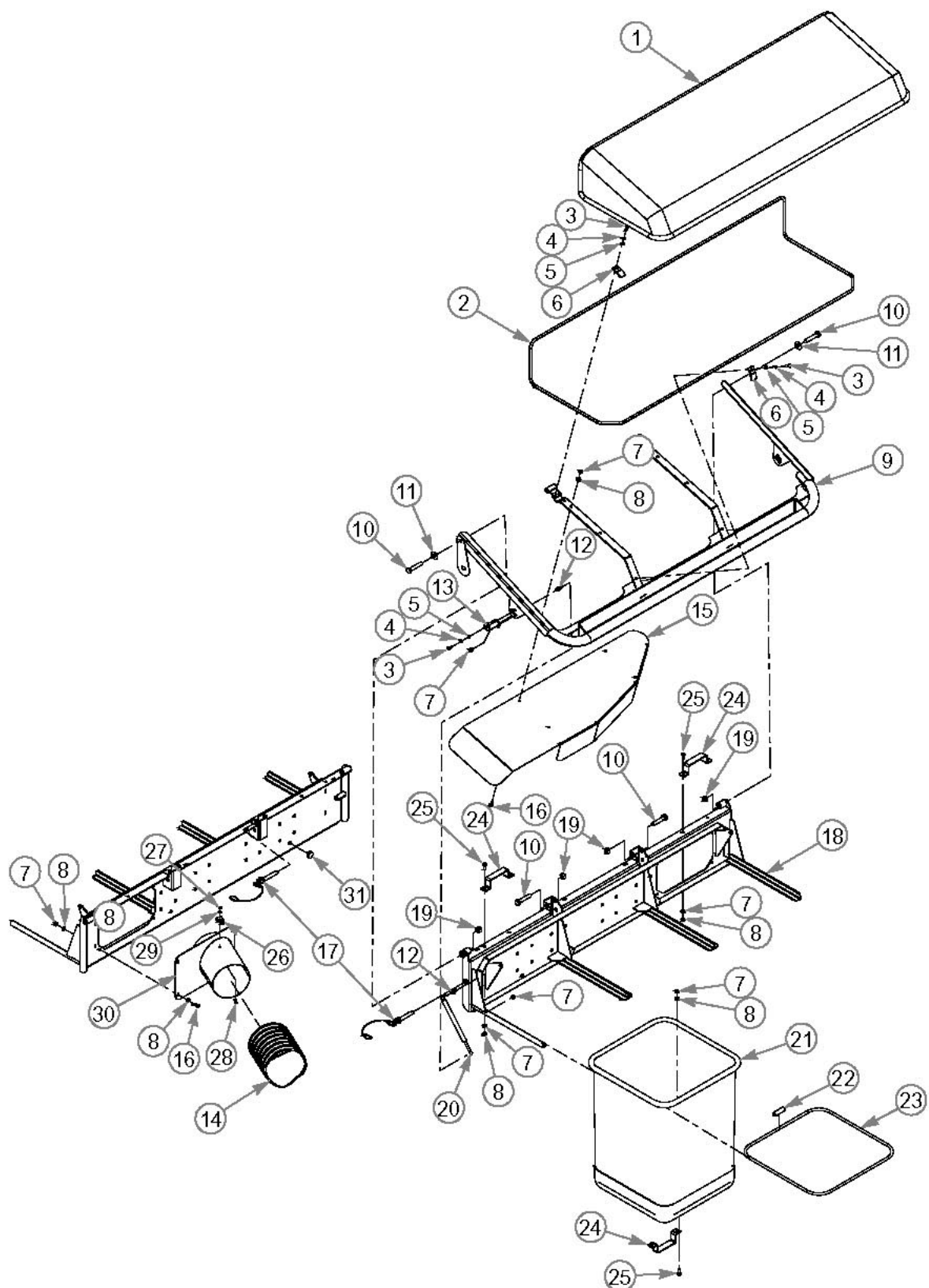
The following chart lists the standard torque values for the threaded fasteners found in this manual. Torque all cap screws, nuts and set screws to these values unless a different torque is shown in the Notes section next to the fastener

<i>SIZE</i>	<i>FT-LBS</i>	<i>NM</i>
1/4"	8.2	11.1
5/16"	17	23
3/8"	30	40
1/2"	73	99
1"	625	850

Section 2

3-Bag Catcher Assembly Illustration.....	2-2
3-Bag Catcher Assembly Parts List.....	2-3

3-Bag Catcher Assembly



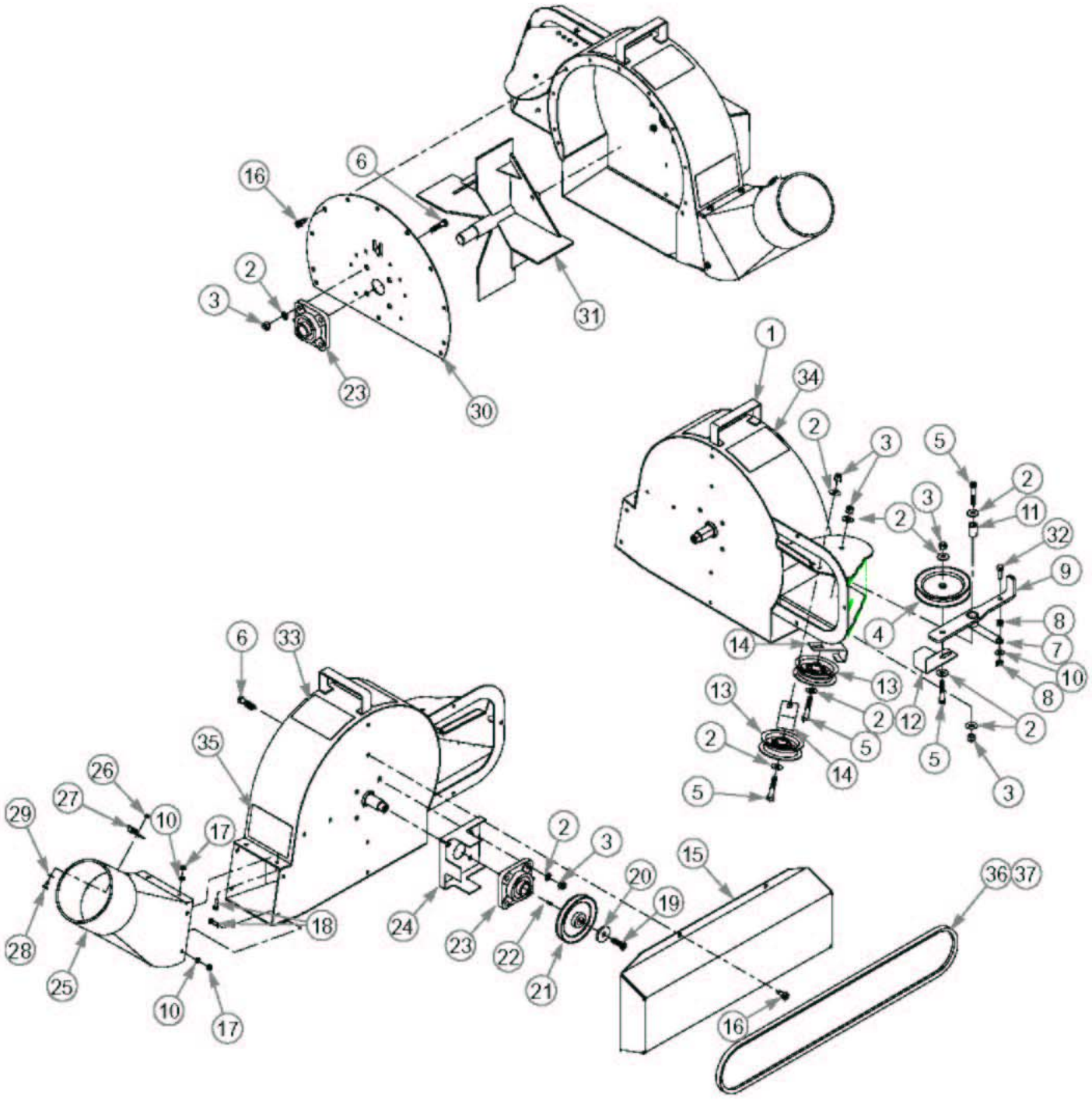
3-Bag Catcher Assembly Parts List

Index	Part No.	Qty	Description
1	4139386	1	3-BAG FABRIC CAP WITH "J" STRIP-PLAIN
2	4139393	1	AIR DOME FRAME-3-BAG-3/8" ROD-ONE PIECE
3	64123-06	6	CAP SCREW-1/4-20 X3/4" LONG
4	64006-01	6	LOCK WASHER-1/4"
5	64163-86	6	FLAT WASHER-1/4" USS
6	4139391	4	BRACKET-SINGLE HOLE MOUNT
7	64229-02	22	HEX NUT, NYLON INSERT-5/16-18
8	64163-87	12	FLAT WASHER-5/16"
9	4137061	1	CAP SUPPORT
10	64123-72	4	CAP SCREW-1/2"-13 X 2 1/2" LONG
11	64163-79	2	FLAT WASHER-1/2"
12	4137063	4	BALL JOINT
13	4137060	2	BRACKET-GAS CYLINDER MOUNT
14	4137066	1	3-BAG HOSE
15	4137064	1	3 BAG DEFLECTOR
16	4137065	4	PAN HEAD SCREW-5/16"-18 X 3/4" LONG
17	4137069	3	DETENT PIN W/ LANYARD-1/2" X 2 1/2" LONG
18	4139401	1	3 BAG CATCHER BAG SUPPORT MOUNT
19	64229-05	4	HEX NUT, NYLON INSERT-1/2"-13
20	4137070	2	GAS CYLINDER
21	4137072	3	CLOTH BAG
22	4137461	3	TUBE CONNECTOR
23	4137071	3	GRASS BAG FRAME
24	4137074	5	BAG HANDLE
25	64123-54	14	CAP SCREW-5/16"-18 X 3/4" LONG
26	4137093	1	SPRING CLIP
27	64229-10	1	HEX NUT, NYLON INSERT-#10-24
28	64152-06	1	MACHINE SCREW-#10-24 X 1/2" LONG
29	4139403	1	FLAT WASHER-3/16"-FENDER WASHER
30	4139394	1	INLET TUBE ASSEMBLY
31	4137073	2	RUBBER BUMPER

Section 3

Blower Assembly Illustration.....	3-2
Blower Assembly Parts List.....	3-3

DI A LI



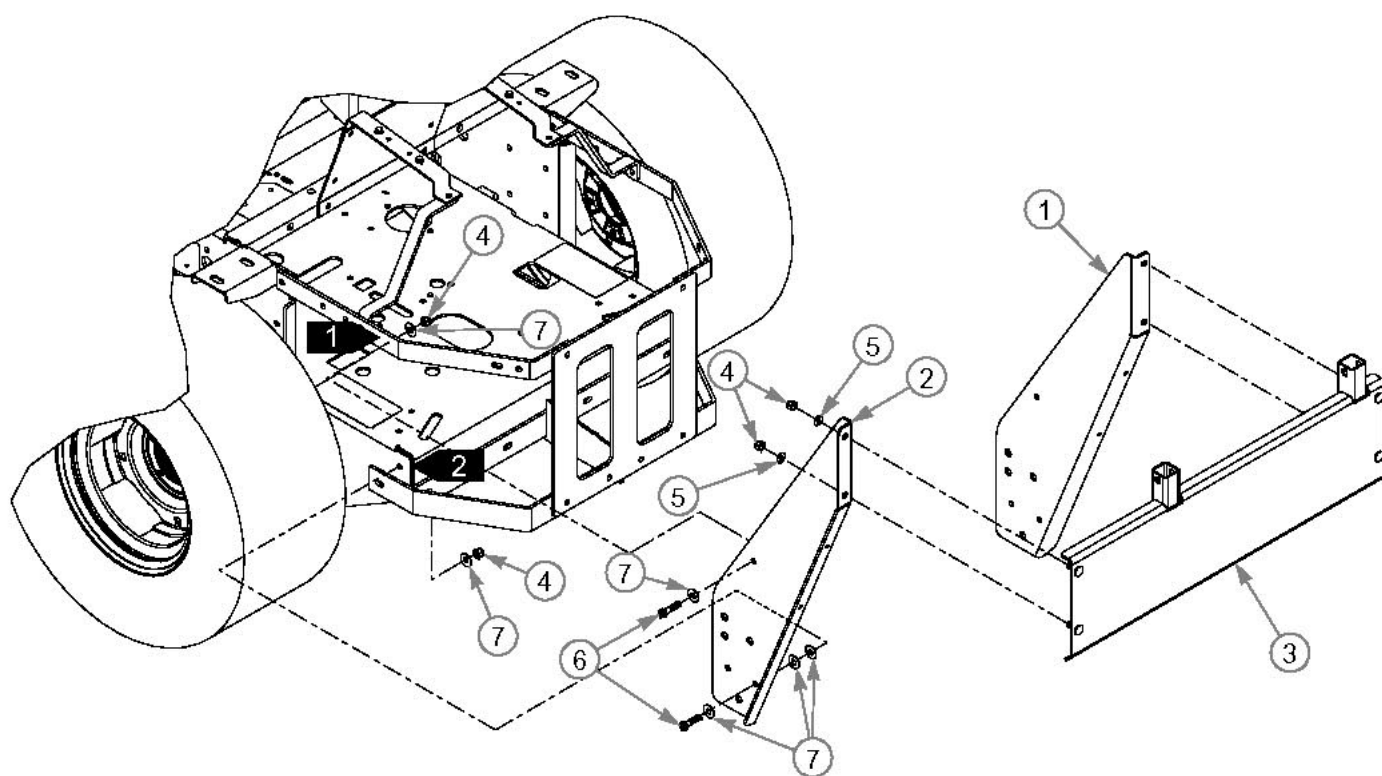
Blower Assembly Parts List

Index	Part No.	Qty	Description
1	4137081	1	BLOWER HOUSING
2	64163-87	16	FLAT WASHER-5/16"
3	64229-03	12	HEX NUT, NYLON INSERT-3/8"-16
4	4137445	1	IDLER PULLEY
5	64123-67	4	CAP SCREW-3/8"-16 X 2" LONG
6	64123-70	8	CAP SCREW-3/8"-16 X 1 1/2" LONG G5
7	4137089	1	SPRING
8	64229-02	2	HEX NUT, NYLON INSERT-5/16"-18
9	4137088	1	BELT TENSIONING ASSEMBLY
10	64163-55	5	FLAT WASHER 1/4" USS
11	4137446	1	BELT TENSIONING BUSHING
12	4137447	1	BELT GUIDE, LARGE PULLEY
13	4137087	2	BACK SIDE BELT IDLER PULLEY
14	4139395	2	BELT GUIDE SMALL PULLEY
15	4137075	1	BELT COVER
16	64197-001	9	SELF THREADING SCREW UNSLOTTED-5/16"-18 X 5/8" LONG
17	64229-01	4	HEX NUT, NYLON INSERT-1/4"-20
18	64123-06	4	CAP SCREW-1/4"-20 X 3/4" LONG
19	64123-50	1	CAP SCREW-3/8"-16 X 1.0" LONG
20	64163-31	1	FLAT WASHER-3/8" HARDENED
21	4137090	1	DRIVE PULLEY
22	4137091	1	KEY
23	4137092	2	BEARING
24	4137448	1	BELT GUIDE
25	4137086	1	TRANSITION CHUTE
26	64229-10	1	HEX NUT, NYLON INSERT, #10-24
27	4137093	1	SPRING CLIP
28	64152-06	1	MACHINE SCREW-#10-24X 1/2" LONG
29	4139403	1	FLAT WASHER-#10 FENDER
30	4137083	1	BLOWER COVER
31	4137082	1	IMPELLER
32	64123-68	1	CAP SCREW-5/16"-18 X 1" LONG
33	4139400	1	LABEL, DANGER-TURN OFF MOWER
34	4139399	1	LABEL, DANGER-ROTATING BLADES
35	4139398	1	LABEL, DANGER-THROWN OBJECT
36	4137076	1	BELT-52" DECKS
37	4137080	1	BELT-61" DECKS

Section 4

Catcher Mount Installation Illustration.....	4-2
Catcher Mount Installation Parts List & Installation Instructions.....	4-3

Catcher Mount Installation



Catcher Mount Installation Parts List

Index	Part No.	Qty	Description
1	4137450	1	RIGHT SIDE SUPPORT
2	4137451	1	LEFT SIDE SUPPORT
3	4137452	1	CATCHER SUPPORT MOUNTING PANEL
4	64229-03	4	HEX NUT, NYLON INSERT-3/8"-16
5	64163-31	8	FLAT WASHER-5/16"
6	64123-70	4	CAP SCREW-3/8"-16 X 1 1/2" LONG G5
7	64229-02	4	FLAT WASHER-3/8"
8		2	HOLE PLUG-SQUARE

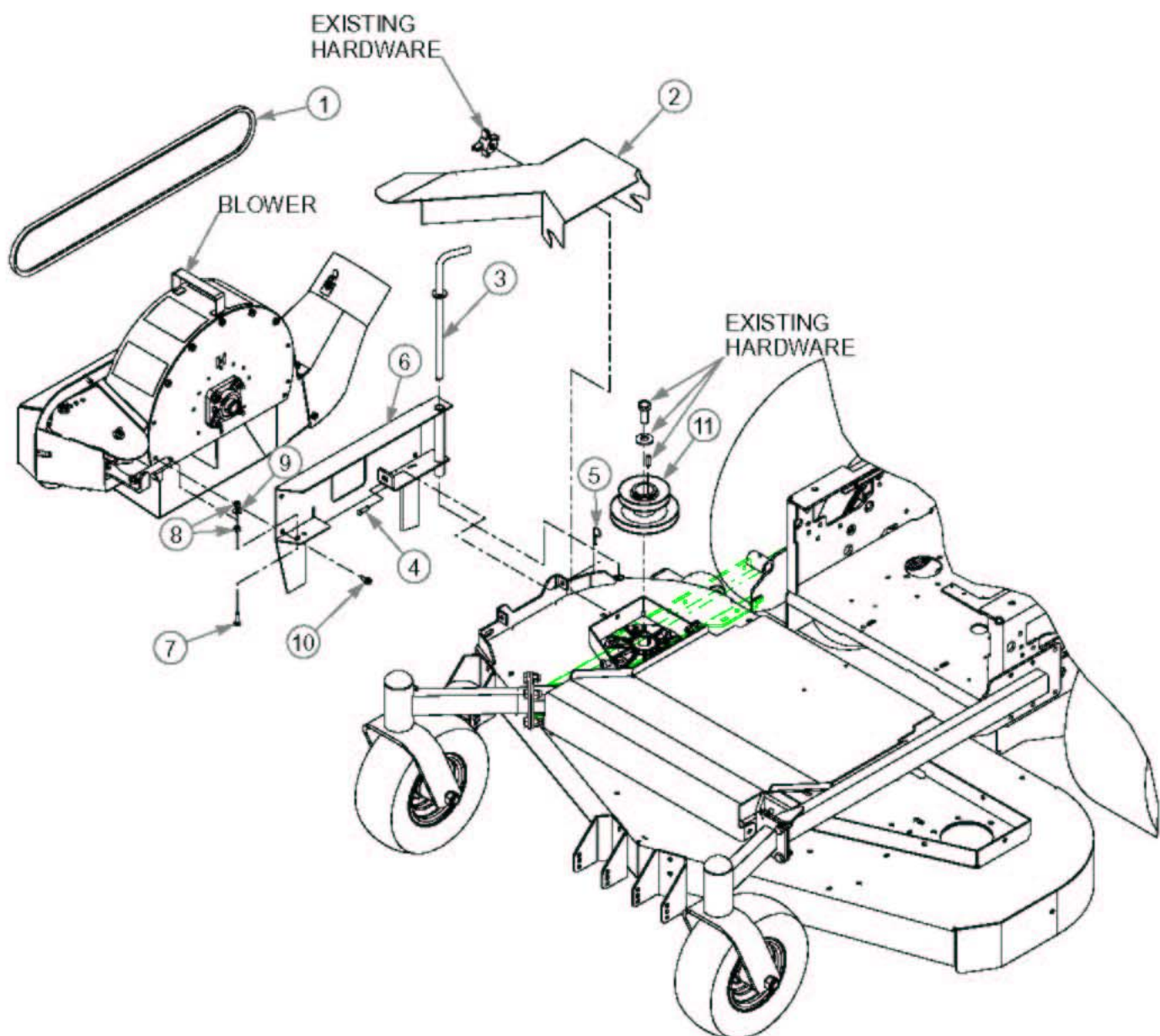
Installation Instructions:

1. Remove lower left engine guard bolt.
2. Install left support with flange facing to the left, by re-installing bolt removed. Do not tighten bolt at this time.
3. Install 3/8" diameter bolt in rear lower hole above first bolt. Note: Use two 3/8" flat washers as spacers between the motor guard and the support leg. Install nut supplied.
4. Use level to position support vertical.
5. Drill 13/32" hole in upper motor guard. Use support leg as drill guide. Install 3/8" bolt and secure with nut. Do not tighten at this time.
6. Repeat procedure for the right support.
7. Install catcher mount with 5/16" flat washers and 3/8" nuts supplied.
8. Tighten all installed hardware at this time.
9. On the main catcher assembly, remove two 1/2" diameter detent pins under the center ribs.
10. Lift catcher assembly onto the catcher mount and re-install detent pins.
11. Remove the detent pin to release the catcher cover assembly.
12. Lift catcher cover assembly to install bags.
13. Install bags with the solid panel towards the mower.

Section 5

Blower Installation Illustration.....	5-2
Blower Installation Parts List & Installation Instructions.....	5-3

Blower Installation



Blower Installation Parts List

Index	Part No.	Qty	Description
1	4137076	1	BELT-52" DECKS
	4137080	1	BELT-61" DECKS
2	4137460	1	BELT COVER-52" DECK
	4137079	1	BELT COVER-61" DECK
3	4137085	1	MOUNTING PIN
4	4139405	2	CLEVIS PIN
5	4139402	2	HAIR PIN
6	4137036	1	BLOWER MOUNT, 52" DECK
	4137084	1	BLOWER MOUNT, 61" DECK.
7	64123-68	1	CAP SCREW 5/16-18 X 1" LONG
8	64229-02	2	NUT NYLON INSERT-5/16-18
9	64163-55	1	FLAT WASHER-1/4" USS
10	64197-02	6	SELF THREADING SLOTTED SCREW-1/4"-20 X 3/4" LONG
11	4137077	1	DRIVE PULLEY

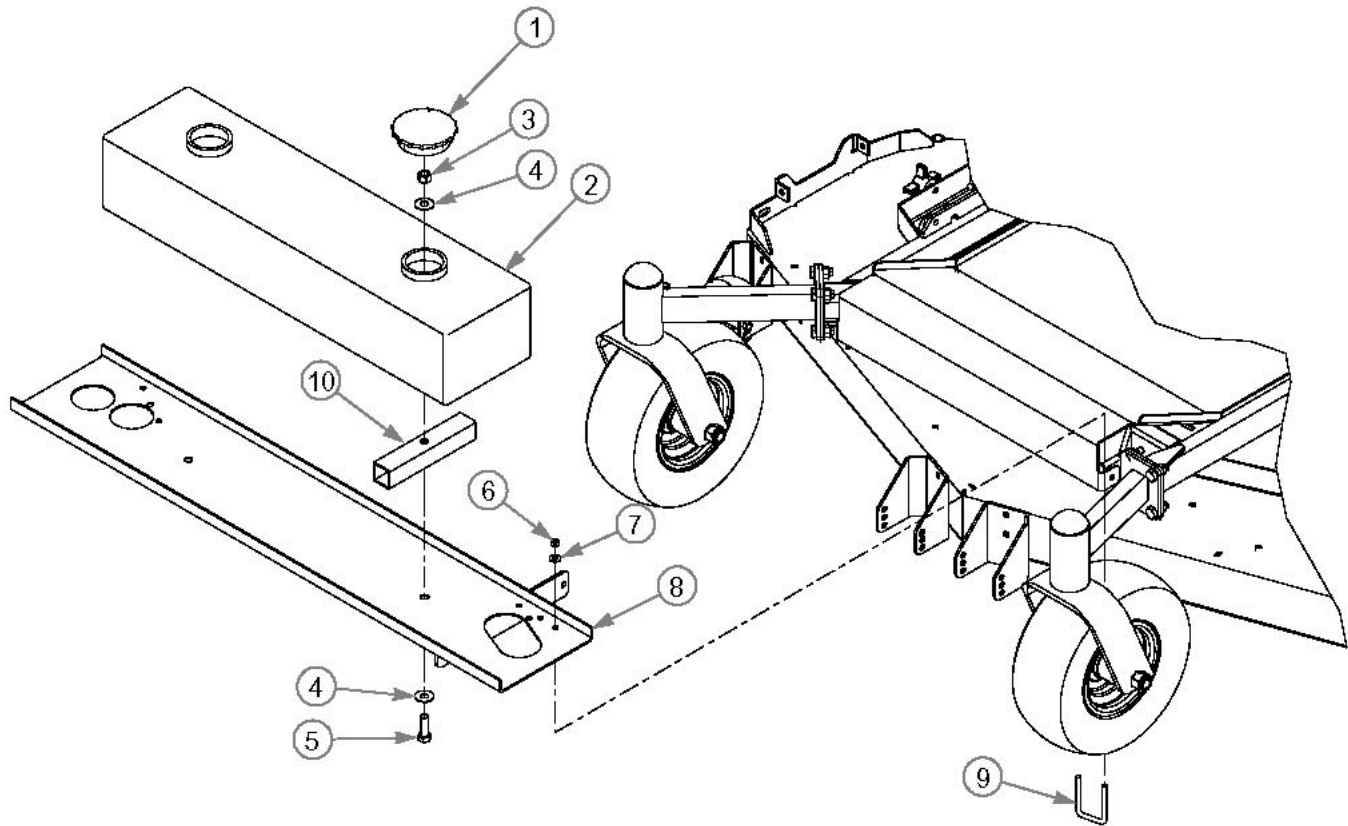
Installation Instructions:

1. Remove discharge side pulley cover. Save hardware.
2. Release tension on spindle drive belt.
3. Remove spindle pulley from discharge side of mower. Save hardware.
4. Install supplied double pulley with saved hardware.
5. Re-tension the spindle drive belt with belt on lower pulley.
6. Install the blower onto the mower using the two clevis pins with hairpins.
7. Install the "L" pin onto the tube on the rear of the mount and into the tube on the mower deck.
8. Install the blower drive belt by pulling on the idler support and slipping the blower belt over the top pulley of the newly installed double pulley. The belt should "cross" between the double pulley and the blower when properly installed.
9. Install pulley cover and secure with saved hardware.
10. Install discharge hose onto catcher assembly and securing with snap clip. Slide the opposite end of the hose onto the transition chute and secure with snap clip.

Section 6

Weight Installation Illustration.....	6-2
Weight Installation Parts List & Installation Instructions.....	6-3

Weight Installation



Weight Installation Parts List

Index

No.	Part No.	Qty	Description
1	4137457	2	CAP ASSEMBLY
2	4137456	1	WEIGHT TANK
3	64229-05	2	HEX NUT NYLON INSERT 1/2"-13
4	64163-79	4	FLAT WASHER 1/2"
5	64123-25	2	CAP SCREW 1/2"-13 X 1 1/2" LONG G5
6	64229.02	4	HEX NUT NYLON INSERT 5/16"-18
7	64163-87	4	FLAT WASHER 5/16"
8	4137458	1	WEIGHT TRAY
9	4137459	2	U-BOLT
10	4137462	2	SPACER TUBE (52" DECK ONLY)

Installation Instructions:

1. Purchase at least 85 pounds of dry sand at your local hardware store.
2. Mount tank to weight tray using 1/2" bolts, washers and nuts. Install with nuts to the inside of the tank. Access is achieved through the screw caps located on the top of the tank. (Note: On 52" deck mowers, supplied spacer tubes must be installed between tank and weight tray.)
3. Replace one of the screw caps on the tank.
4. To achieve maximum fill of the tank with sand, tilt the tank with the open port up and fill with sand. Slowly lower the tank to horizontal and finish filling with sand.
5. Re-install screw cap.
6. Remove grease fitting on the front right side caster spindle.
7. Remove hardware on hinge of floor pan. Save hardware.
8. Install weight tray over front caster spindles
9. Line up tray ears with floor pan hinges and re-install saved hardware
10. Install U-bolts with nuts and washer over front caster tube supports and through weight trays.
11. Reinstall grease fitting on caster spindle.