

MAN 4125861  
Rev. D 8-2007



MODEL:

**544917**  
LAWNIRE IV HONDA EC



---

# TECHNICAL MANUAL

**CALIFORNIA  
Proposition 65 Warning**

Diesel engine exhaust and some of its constituents are known to the State of California to cause cancer, birth defects and other reproductive harm.



**WARNING**

The engine exhaust from this product contains chemicals known to the State of California to cause cancer, birth defects or other reproductive harm.

**Californie Proposition 65  
Avertissement**

Les échappements des moteurs diesel et certains de leurs composés sont reconnus par l'Etat de Californie pour être cancérogènes, provoquer des défauts congénitaux et d'autres dangers en matière de reproduction.



**AVERTISSEMENT**

L'émission du moteur de ce matériel contient des produits chimiques que l'Etat de Californie considère être cancérogènes, provoquer des défauts congénitaux et d'autres dangers en matière de reproduction.

**California Advertencia  
de la Proposicion 65**

El estado de California hace saber que los gases de escape de los motores diesel y algunos de sus componentes producen cáncer, defectos de nacimiento y otros daños en el proceso de reproducción humana.



**ADVERTENCIA**

El estado de California hace saber que los gases de escape de este producto contienen productos químicos que producen cáncer, defectos de nacimiento y otros daños en el proceso de reproducción humana.

**CALIFORNIA  
Proposition 65 Warning**

Battery posts, terminals, wiring insulation, and related accessories contain lead and lead compounds, chemicals known to the State of California to cause cancer and birth defects or other reproductive harm.  
**WASH HANDS AFTER HANDLING.**

## IMPORTANT MESSAGE

Thank you for purchasing this CGC, Inc. product. You have purchased a world class product, one of the best designed and built anywhere.

This machine comes with a Technical Manual containing safety, operation, parts, maintenance and service information. The useful life and good service you receive from this machine depends to a large extent on how well you read and understand this manual. Treat your machine properly, lubricate and adjust it as instructed, and it will give you many years of reliable service.

Your safe use of this CGC, Inc. product is one of our prime design objectives. Many safety features are built in, but we also rely on your good sense and care to achieve accident-free operation. For best protection, study the manual thoroughly. Learn the proper operation of all controls. Observe all safety precautions. Follow all instructions and warnings completely. Do not remove or defeat any safety features. Make sure those who operate this machine are as well informed and careful in its use as you are.

See a CGC, Inc. dealer for any service or parts needed. CGC, Inc. service ensures that you continue to receive the best results possible from CGC, Inc. products. You can trust CGC, Inc. replacement parts because they are manufactured with the same high precision and quality as the original parts.

CGC, Inc. designs and builds its equipment to serve many years in a safe and productive manner. For longest life, use this machine only as directed in the manual, keep it in good repair and follow safety warnings and instructions. You'll always be glad you did.

**Commercial Grounds Care, Inc.  
One Bob Cat Lane  
Johnson Creek, WI 53038-0469**

TABLE OF CONTENTS.....	FIGURES.....	PAGE
SAFETY.....		2
LABELS.....		3, 4
ASSEMBLY/SET-UP INSTRUCTIONS .....		5-7
CONTROLS.....		8
OPERATION.....		9, 10
SERVICE.....		11
STORAGE.....		12
TRANSPORTING .....		13
VIBRATION LEVELS.....		14
SPECIFICATIONS.....		15
NOTES.....		16
PARTS SECTION.....		17
FRAME GROUP.....	FIGURE 1 .....	18, 19
MAIN GROUP-LAWNNAIRE IV .....	FIGURE 2 .....	20, 21
HANDLE GROUP.....	FIGURE 3 .....	22, 23
TINE WHEEL GROUP.....	FIGURE 4 .....	24, 25
DRUM GROUP.....	FIGURE 5 .....	26, 27
DECAL GROUP-LAWNNAIRE IV .....	FIGURE 6 .....	28, 29

**NOTICE !!!**

Unauthorized modifications may present **extreme** safety hazards to operators and bystanders and could also result in product damage.

Commercial Grounds Care, Inc. strongly warns against, rejects and disclaims any modifications, add-on accessories or product alterations that are not designed, developed, tested and approved by CGC, Inc. Engineering Department. Any CGC, Inc. product that is altered, modified or changed in any manner not specifically authorized after original manufacture—including the addition of “after-market” accessories or component parts not specifically approved by CGC, Inc.—will result in the CGC, Inc. Warranty being voided.

Any and all liability for personal injury and/or property damage caused by any unauthorized modifications, add-on accessories or products not approved by CGC, Inc. will be considered the responsibility of the individual(s) or company designing and/or making such changes. CGC, Inc. will vigorously pursue full indemnification and costs from any party responsible for such unauthorized post-manufacture modifications and/or accessories should personal injury and/or property damage result.



This symbol means:  
**ATTENTION!**  
**BECOME ALERT!**

Your safety and the safety of others is involved.

**Signal word definitions:**

The signal words below are used to identify levels of hazard seriousness. These words appear in this manual and on the safety labels attached to CGC, Inc. machines. For your safety and the safety of others, read and follow the information given with these signal words and/or the symbol shown above.

**⚠ DANGER**

**DANGER** indicates an imminently hazardous situation which, if not avoided, **WILL** result in death or serious injury.

**⚠ WARNING**

**WARNING** indicates a potentially hazardous situation which, if not avoided, **COULD** result in death or serious injury.

**⚠ CAUTION**

**CAUTION** indicates a potentially hazardous situation which, if not avoided, **MAY** result in minor or moderate injury. It may also be used to alert against unsafe practices or property damage.

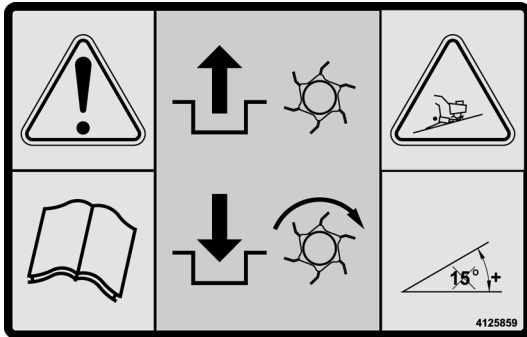
**CAUTION**

**CAUTION** used without the safety alert symbol indicates a potentially hazardous situation which, if not avoided, **MAY** result in property damage.



**MODEL NUMBER:** This number appears on sales literature, technical manuals and price lists.

**SERIAL NUMBER:** This number appears only on your mower. It contains the model number followed consecutively by the serial number. Use this number when ordering parts or seeking warranty information.



4125859

### Operation & Safety Manual

- Read and understand Operation & Safety Manual.
- Replace if lost or damaged.

### Drive Engagement

- Release the handle to disengage the clutch.
- Pull back on the handle to engage the clutch.

### Slope Operation

- Do not use on slopes greater than 15°.
- Do not release the clutch handle on slopes, the unit will freewheel down the slope.



2000641

### When Refueling:

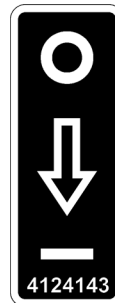
- Stop Engine.
- Do not smoke.
- Do not spill fuel.
- Do not overfill. Allow 25 mm for fuel expansion.



4115768

### Throttle Control

- Move the throttle lever forward for increased engine speed.
- Pull the throttle lever backwards for slower engine speeds.



4127143

### ON/OFF

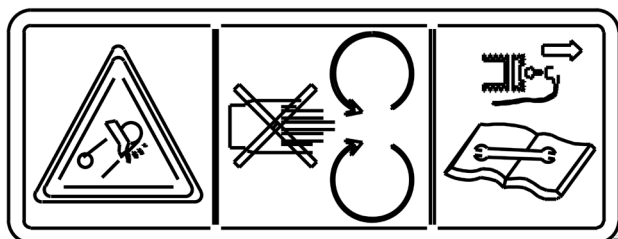
- Rotate the switch so the pointer is up for the engine "OFF" position.
- Rotate the switch so the pointer is down for the engine "ON" position.



2000646

### EC Conformity

- Conforms to all EC directives applicable.



840697

## Belt Drive

- Keep safety shields in place.
- Keep hands and fingers away from belts.

## Moving Components

- Keep hands away from moving components.

## Servicing The Machine

- Disable the spark plug wire before performing any service or maintenance.
- Read and understand the service section of the operators manual.



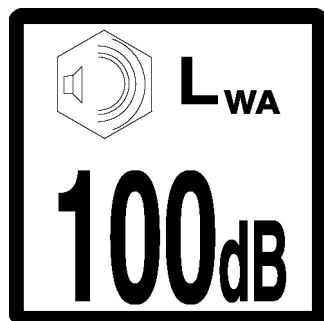
009034920

## Hot Surfaces

- Do not touch hot surfaces.
- Muffler and engine components remain hot after the engine is shut off.

## Maintain a safe distance

- Keep area clear of people and pets.
- Check the work area for any rocks or other objects to avoid.



009034760

## Noise Emission

- Conforms to the specifications of directive 2000/14/EC.



524541

## Rotating Tines

- Keep fingers and hands away from rotating tines.
- Keep feet and toes away from rotating tines.

## Maintain a safe distance

- Keep area clear of people and pets.
- Check the work area for any rocks or other objects to avoid.

**GENERAL NOTE:  
BELOW**

**FRONT, REAR, RIGHT HAND AND LEFT HAND REFERENCES  
ARE WITH RESPECT TO AN OPERATOR AT THE CONTROLS.**

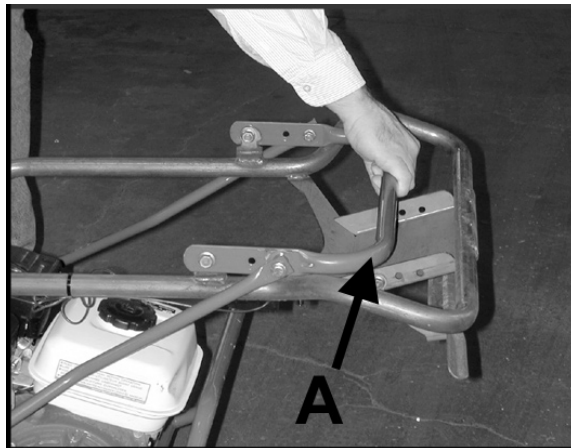
**UNPACKING** - Unpacking the aerator entails securing the handle and rolling the unit off the shipping pallet.

1. Cut the banding securing the aerator to the pallet

**⚠ WARNING**

Banding is under tension and may snap back when cut. Wear eye protection and stay clear when cutting the band.

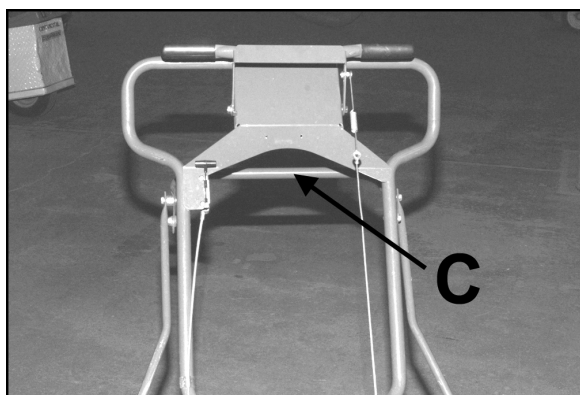
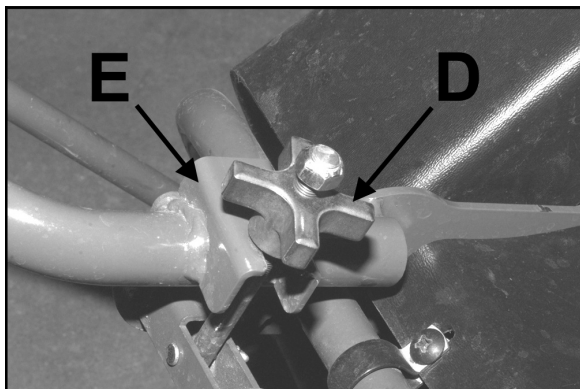
2. Unfold handle by pulling on the transport lift handle **A**.



### FOR LAWNNAIRE IV MODELS

1. Flip the handle locking knobs **D** up into position over the handle bracket **E** and tighten. **HAND TIGHTEN ONLY!**
2. Pull up on the transport lift handle **C** to raise the aerator to the transport position.
3. Carefully roll the unit off the pallet.

**NOTE:** If the folding handle will not be used, bolt the handle in place. Use (2) 5/16-18 x 3/4" bolts and (2) 5/16-18 Nylock nuts.

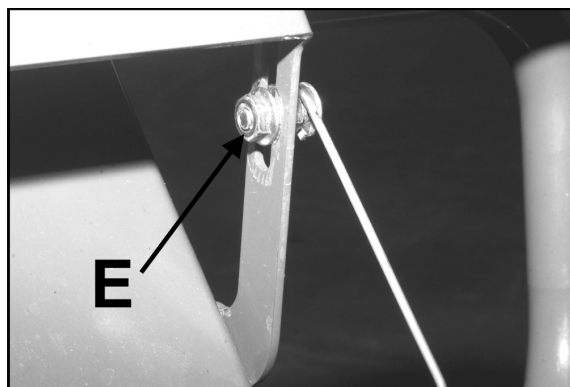
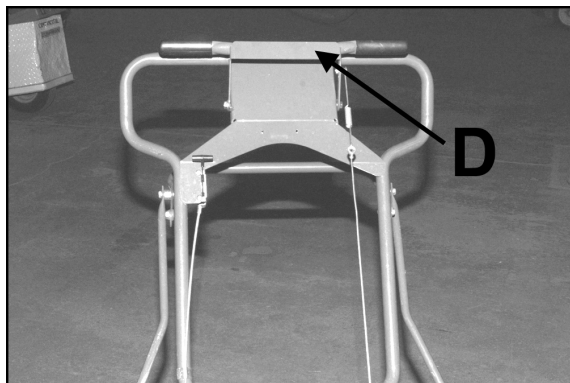


### CHECKING THE CLUTCH CABLE

The clutch cable is adjusted prior to shipping; however, it should be checked before the unit is put into service.

1. Pull the clutch control handle **D** back and down and make sure the idler engages the belt.
2. Release the clutch control handle **D** and make sure the belt disengages completely.
3. If adjustment is necessary, loosen nut **E** on the clutch spring hardware and adjust its position in the slot of the clutch lever.

**NOTE:** Spring extension should not exceed .25" with the clutch control handle pulled back.

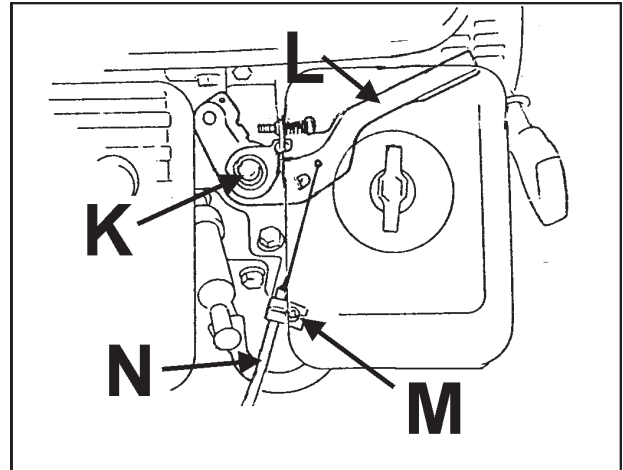




**CHECKING THE THROTTLE CABLE-** The throttle cable is adjusted prior to shipping; however, it should be checked before the unit is put into service. The throttle control should freely move in a full range of motion forward and backward. If necessary, the throttle cable can be adjusted as follows:

### FOR HONDA ENGINES:

1. Loosen the throttle lever friction nut **K** enough to allow free movement of the throttle lever **L**.
2. Loosen throttle cable clamp **M**.
3. Push throttle lever **L** all the way forward.
4. Push throttle cable sleeve **N** up through cable clamp until fully advanced.
5. Tighten the casing clamp screw **M**.



### INITIAL BELT SEATING AND ADJUSTMENT

Proper tensioning of V-belts is the single most important factor necessary for long, satisfactory operation. Too little tension will result in slippage, causing rapid belt and pulley wear. Too much tension can result in excessive stress on belts, bearings, shafts, reduced efficiency and operator fatigue due to excessive force required to hold the bail closed.

1. Operate the drive a few minutes to seat the belts in the sheave grooves. Observe the operation of the drive under its highest load condition (usually starting).
2. Check the tension on a new drive several times during the first 24 hours of operation.
3. Keep the drive free of foreign material which might cause slippage or damage to the belt and sheave surfaces.
4. If a V-belt slips, it is too loose. **NEVER** apply belt dressing, as this will damage the belt and cause early failure.
5. Make sure pulleys stay in proper alignment. Misaligned pulleys can result in belt rolling in the pulley groove causing belt damage or breakage.

### HANDLE CONTROLS

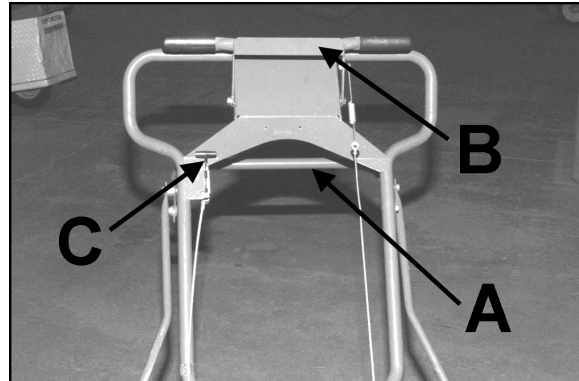
**Transport Lift Handle A** - Pushing down on the handle lowers the tines for aerating. Pulling the handle up raises the tines so the aerator can be moved or transported without incurring damage to the unit or the turf.

**Clutch Control Handle (Bail) B** - Engages the belt tightener clutch. Pulling back on the handle engages the clutch; releasing the handle disengages the clutch.

#### **⚠ WARNING**

Releasing the clutch on an incline will cause freewheeling, which will allow the unit to roll down the incline.

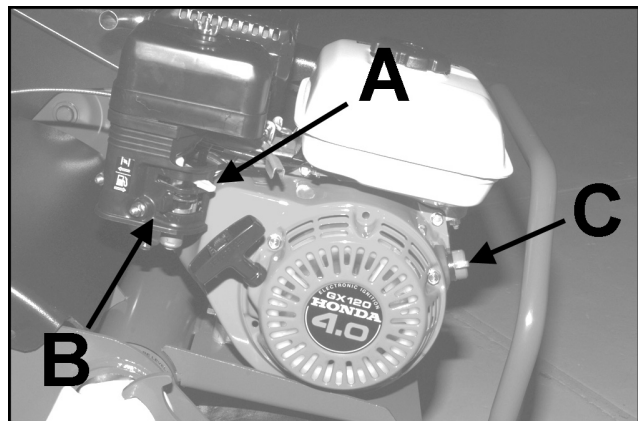
**Throttle Control C** - The throttle control, located on the handle, adjusts the engine speed. Pushing the control forward increases the speed; pulling the control back reduces the speed.



### ENGINE CONTROLS

The Lawnaire IV is equipped with a 4 HP Honda engine.

The engine is equipped with a choke **A**, a fuel valve **B** and an On/Off switch **C**. The fuel valve and the On/Off switch must both be in the "ON" position to start the engine. Turn the On/Off switch to "OFF" to stop the engine. Using the choke will help start a cold engine. After the engine starts, adjust the choke for best running results. Once the engine warms, the choke should not be needed.



### PRE-OPERATION CHECK

1. Visually check all moving parts and all fasteners. If loose or broken, tighten or replace. Check handle locking knobs and hand tighten if necessary. Check for broken or bent tines; replace if necessary
2. Check the engine crankcase and gear reduction case oil levels with the engine resting in a level position. Add oil if necessary.
3. Follow the engine manufacturer's recommendations for the correct type and amount of oil. Fill the fuel tank according to the engine manufacturer's specifications.

#### **WARNING**

Gasoline is extremely flammable and highly explosive under certain conditions. Always stop the engine and do not smoke or allow open flames or sparks when refueling. BE SURE to install fuel cap after refueling.

NEVER start or run the engine inside where exhaust fumes can collect. Carbon monoxide present in the exhaust is an odorless and deadly gas.

DO NOT operate equipment without shields in place. DO NOT make adjustments or perform any maintenance while the engine is running.

Before operating, check the area and remove any object which may present a safety hazard or damage the equipment.

This unit is not designed to be used on steep slopes. To prevent injury and/or damage to equipment, use extreme caution when operating near terraces or hilly terrain. Travel up and down slopes at a 45 degree angle rather than across, to prevent unit from tipping over, DO NOT release clutch handle on a slope; this will cause freewheeling, allowing the unit to roll down the slope.

## AERATING

**NOTE:** For best performance and maximum tine penetration, the lawn should be thoroughly watered the day before aeration.

1. Rotate the water drum on the front of the unit until the filler plug **F** is positioned at the top. Remove the plug, fill the drum with water and replace the plug.
2. Place weights **B** in large tube portion of the frame (if not already installed) and secure in place on each end with weight latches **A**.
3. Move the engine On/Off switch to the "ON" position and then pull the recoil starter and choke as required to start the engine.

**NOTE:** Fuel shutoff valve should be open.

4. Lift the transport lift handle if necessary to make sure the tines are not touching the ground, advance the throttle, slowly pull back on the clutch handle control and transport the aerator to the work area.

**NOTE:** Never cross hard objects or surfaces (such as sidewalks, driveways, stepping stones, etc.) with tines in the down position.

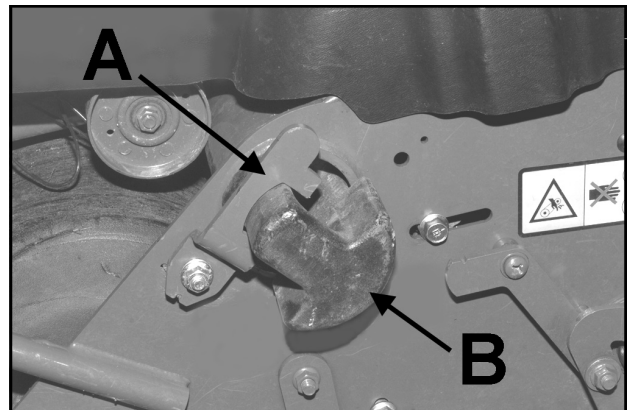
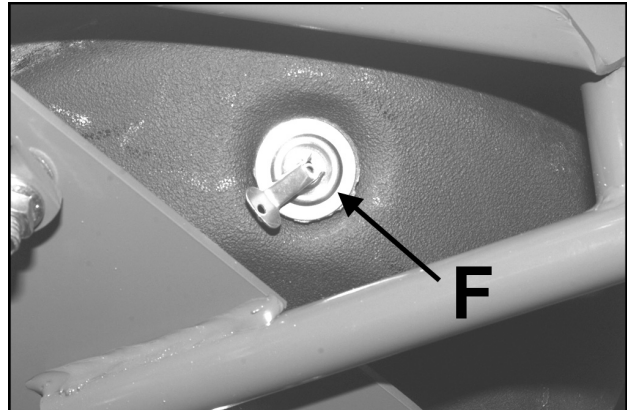
5. Upon reaching the work area, release the clutch control handle and adjust the throttle speed for aerating.
6. Push down on the transport lift handle, lowering the aerating tines to the turf.
7. Pull back slowly on the clutch control handle to start aerating.

**NOTE:** For maximum tine penetration into turf, apply downward pressure on the handle, until drum is off the ground.

8. At the end of each aerating pass, release the clutch control handle, lift up on the handle assembly and pivot the unit on the water drum. Resume aerating.

**NOTE:** For reverse, pull back on the handlebars when in the transport position.

9. When finished aerating, lift up on the transport lift handle to move the unit into transport position.
10. Drain the water drum when finished with aerating.



### SERVICE

#### **⚠ WARNING**

When replacement parts are required, use genuine CGC, INC. parts or parts with equivalent characteristics, including type, strength and material. Failure to do so may result in product malfunction and possible injury to the operator and/or bystanders.

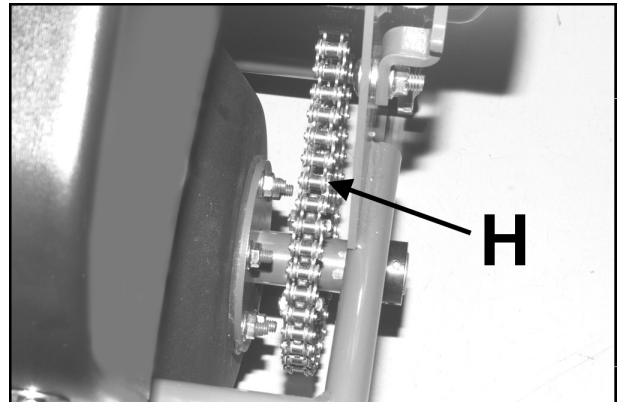
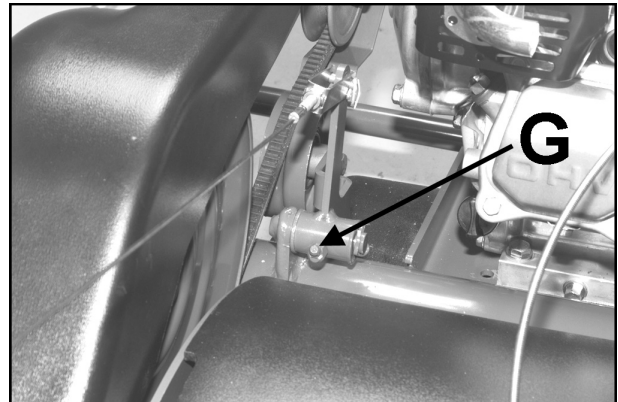
Any warning decal that becomes illegible should be replaced immediately.

Do not operate equipment without shields in place.

Do not make any adjustments or perform any maintenance while the engine is running.

1. Thoroughly clean all tines inside and out when aerating is completed and apply a light coat of oil to prevent rust on tines.
2. Check the engine and gear reduction case oil levels with the engine resting in a level position.
3. Inspect the air filter element and replace it if necessary.
4. Lubricate the clutch pivot **G** prior to each aerating season or as needed.
5. Keep the drive belt free of oil and dirt and replace if worn or damaged.
6. Keep the roller chain clean and in proper running order. Lubricate using Lubriplate #13563; available as Part No. 523248.
7. Check the roller chain for tightness and wear. Adjust idler sprockets if necessary by loosening the nut and screw holding the idler sprocket to the frame and then sliding the sprocket in the slot to the desired position. Tighten hardware.

**NOTE:** Excessive roller chain tightness will shorten the life of the bearings. The chain **H** should have movement of 1/8, to 1/4, (3mm to 6mm) deflection at the center point between the upper idler and drum sprockets.



## STORAGE INSTRUCTIONS

**⚠ WARNING**

To prevent possible explosion or ignition of vaporized fuel, do not store equipment with fuel in tank or carburetor in enclosure with open flame (for example, a furnace or water heater pilot light).

**Before the equipment is put in to storage for any period exceeding 30 days, the following steps should be taken.**

1. Drain all fuel from the fuel tank and fuel lines.
2. Start the engine and run until all the fuel is used from the carburetor float bowl.
3. While the engine is still warm, drain the crankcase oil and replace with the proper weight oil corresponding to the season the equipment will next be used.
4. Remove the spark plug and squirt a small amount of engine oil into the cylinder. Turn the engine over a few times to distribute the oil.
5. Drain the water drum.

**NOTE:** Always drain the water drum for winter storage. Freezing water can rupture the drum.

6. Lubricate the clutch pivot fitting.

**To put the equipment into service after an extended period of storage:**

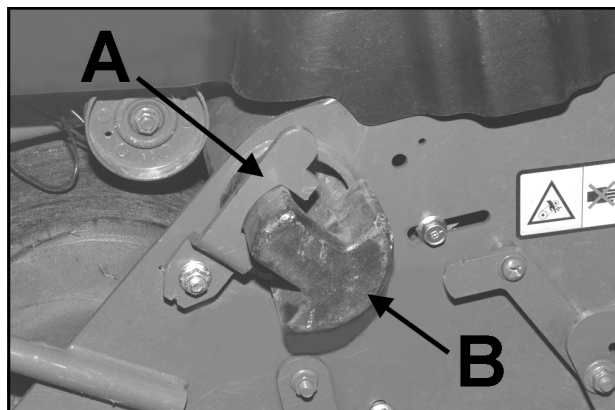
1. Check for loose parts and tighten if necessary.
2. Check for cracked or broken tines and replace as necessary.
3. Fill the fuel tank.
4. Check the engine and gear reduction case oil levels with the engine in a level position.
5. Start the engine.
6. Check for fuel leaks.
7. Check clutch control operation to make sure the unit stops when the clutch control is released.

### TRANSPORTING

If a tote trailer will be used to transport the unit, the two cast weights must be removed from the aerator frame and a locking shaft installed in their place.

Removing the cast weights and draining the water drum will decrease the weight for easier loading on a vehicle or trailer.

To remove the weights, pull up on the latch **A** securing the weights **B** and slide the weights out.



### **CAUTION**

Use caution when removing the cast weights.  
Each weight is approximately 22 lbs.

**NOTE:** Be sure to close the fuel shut off valve  
before transporting the unit.



## VIBRATION LEVEL

The machine was tested for whole body and hand/arm vibration levels. The operator was in the normal operating position with both hands on the steering mechanism. The engine was running and the cutting device was rotating with the machine stationary.

**Standard ISO 5349: 1986** Mechanical Vibration

Guidelines for the measurement and the assesement of human exposure to hand transmitted vibration.

LAWNAIRE IV HAND/ARM ACCELERATION LEVEL	MAXIMUM LH OR RH ACCELERATION VALUE m/s <sup>2</sup>		
	X Aeq	U Aeq	X Aeq
	1.23	1.33	0.83
<b>DOMINANT VALUE</b>	1.33		

## NOISE LEVEL

The machine was tested for noise levels according to Directive 2000/14/EC. The operator ear levels are less than the 90dB pressure level requirement. Bystander noise levels are less than the guaranteed value of 100dB power level.



### LAWNAIRE IV

#### Dimensions:

Width.....	28" (711 mm)
Length.....	51" (1295 mm)
Length (handle folded).....	46" (1168 mm)
Height (transport).....	47.5" (1206 mm)
Height (handle folded).....	30" (762 mm)

#### Net Weight:

Dry, w/o acc. weight.....	200 lbs. (91 Kg)
Dry, w/ acc. weight.....	240 lbs. (109 Kg)
With water tank full and acc. weight.....	280 lbs. (127 Kg)

#### Speed:

Transport.....	up to 320 f.p.m. (97.5 M.p.m.)
----------------	--------------------------------

Aerate.....	up to 305 f.p.m. (93 M.p.m.)
-------------	------------------------------

#### Engines:

##### Model 544917

Model.....	GX120K1HX
Starter.....	Honda, 4.0 h.p., 4 cycle
Governor.....	Recoil, on/off switch
Idle Speed.....	3600 RPM, no load
Fuel Tank.....	1400 +/- 100 RPM
Gear Reduction.....	.66 gal. (2.5 L)
	6 to 1

#### Drive:

Primary.....	V Belt, 4L section
Secondary.....	#40 plated roller chain

#### Wheels:

Front.....	11" (279 mm) Dia. water tank
	5.2 gal. (19.7 L) max. capacity
Rear.....	8 x 2.50 semi-pneumatic tires
	with 3/4" ball bearings

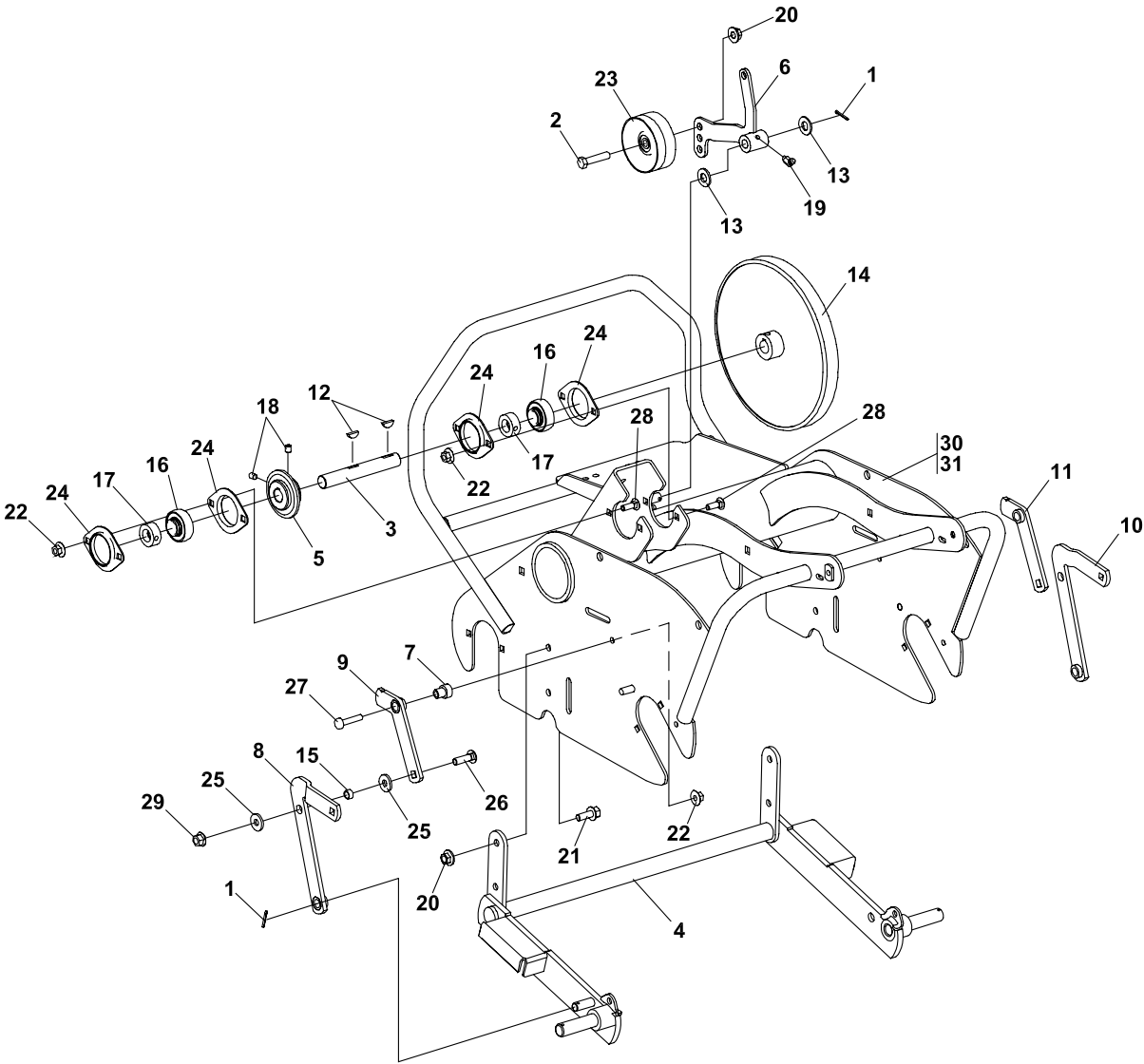
#### Aeration:

Tines....	3/4" (19 mm) formed from .08" hardened
	chrome molybdenum alloy steel, 30 per unit
Penetration Depth.....	2 3/4" (70 mm) max.
Swath Width.....	19" (483 mm)
Hole Pattern.....	3 3/4" x 7" (95 x 178 mm) on center
Production.....	Up to 28,975 sq. ft. / hour

**THIS PAGE LEFT BLANK INTENTIONALLY**

# **PARTS SECTION**

FIGURE 1



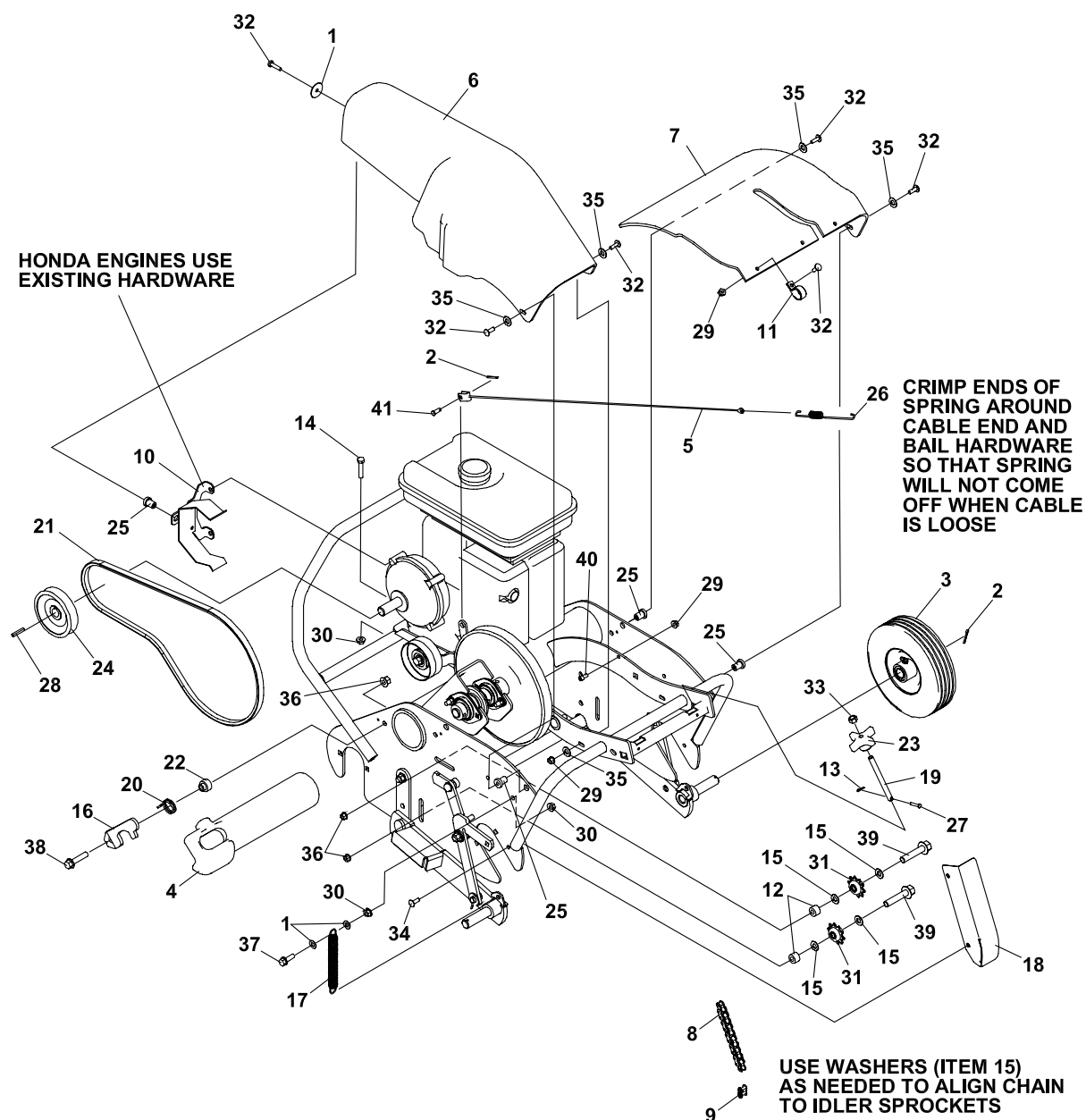
# Lawnaire IV

## FRAME GROUP

FIGURE 1

ITEM	PART NO.	DESCRIPTION	QTY	ITEM	PART NO.	DESCRIPTION	QTY
1-1	304636	COTTER PIN, 12 x 1.12 YS	3				
1-2	64123-87	BOLT-HEX 3/8-16X1-3/4	1				
1-3	2702738	SHAFT, JACK LA4	1				
1-4	2702877.7	FRAME, TRANSPORT LA4	1				
1-5	841261	SPROCKET, 16T, 1/2P	1				
1-6	2703341.7	BELLCRANK AY, IDLER	1				
1-7	2703519	BUSHING, SH .33X.75X.88	2				
1-8	2703756.7	LINK AY, LOWER LEFT	1				
1-9	2703757.7	LINK AY, UPPER LEFT	1				
1-10	2703758.7	LINK AY, LOWER RIGHT	1				
1-11	2703759.7	LINK AY, UPPER RIGHT	1				
1-12	64164-19	KEY WOODRUFF.19X.75 #9	2				
1-13	64163-67	WASHER-.516X1X12GA	2				
1-14	521609	PULLEY, DRIVEN 10"	1				
1-15	521679	BUSHING	2				
1-16	521856	BEARING,BALL	2				
1-17	521857	COLLAR,BRG LOCKING	2				
1-18	64044-18	SCREW-SET	2				
1-19	85010N	ZERK	1				
1-20	64141-4	NUT-WLF 3/8-16	5				
1-21	64139-24	BLT-WLF 3/8-16 X 1	4				
1-22	64141-6	NUT, 5/16-18	6				
1-23	548942	PULLEY, PLAIN IDLER 3.25"	1				
1-24	548962	HOUSING,BEARING	4				
1-25	603620	WSHR,.38 1.00.12 YS FLAT	4				
1-26	64018-7	BLT-CRG 3/8-16X1-1/4	2				
1-27	800329	SCRW,.31-18 1.50	2				
1-28	64018-9	BLT-CRG 5/16-18X3/4	4				
1-29	64268-03	NUT-FL NYLN LOCK 3/8-16	2				
1-30	2703061.2	FRAME AY-LAWNNAIRE	1				
1-31	2702735.2	FRAME AY-LAWNNAIRE	1				

FIGURE 2



# Lawnaire IV

## MAIN GROUP LAWNNAIRE IV

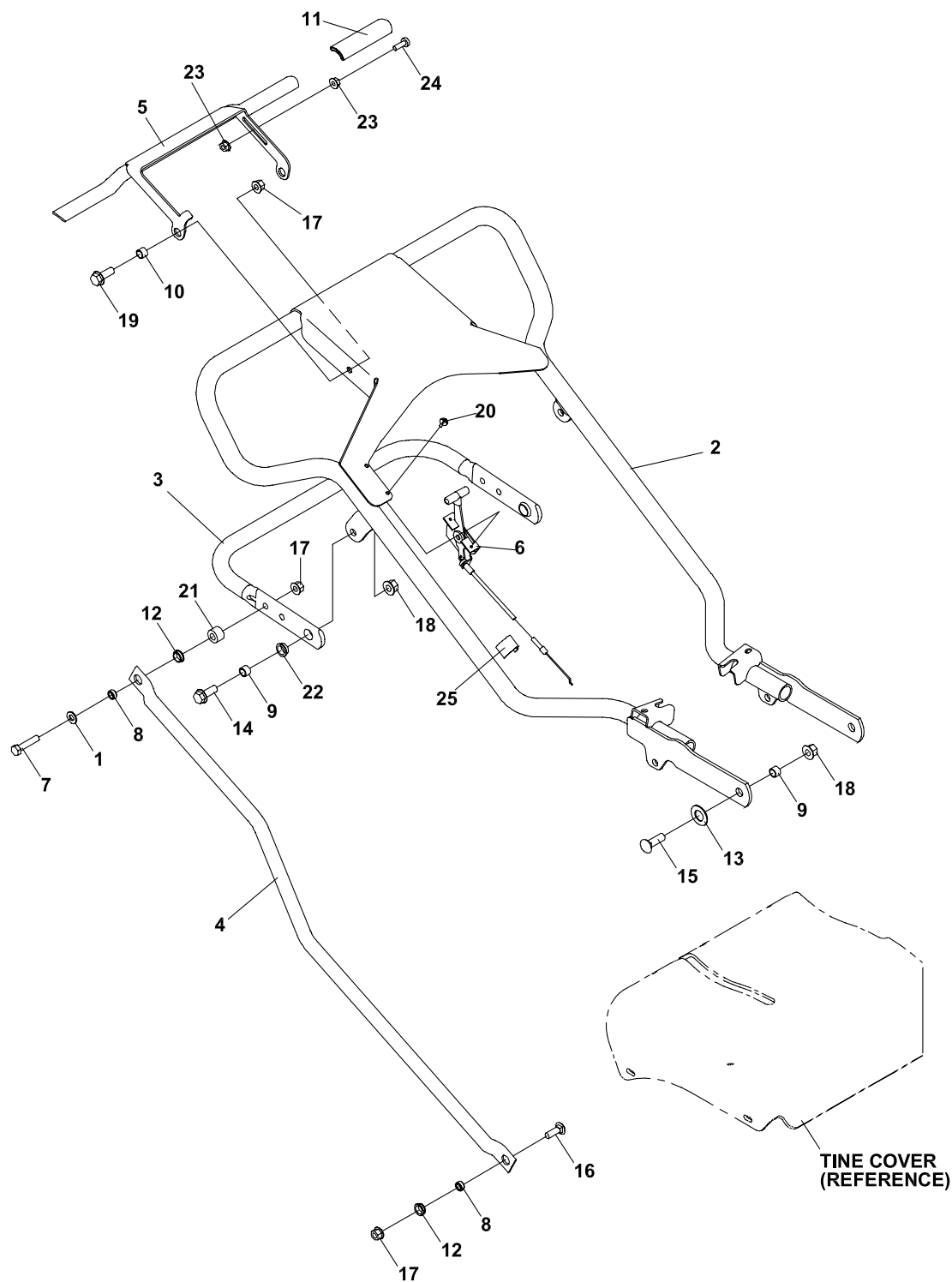
FIGURE 2

ITEM	PART NO.	DESCRIPTION	QTY	ITEM	PART NO.	DESCRIPTION	QTY
2-1	64163-29	WASHER-21/64 X 1 X 11GA	5				
2-2	304636	COTTER PIN, .12 x 1.12	3				
2-3	4124192	WHEEL, 8X2.5 SEMI-PNEUM	2				
2-4	2703148	WEIGHT, LAWNNAIRE	2				
2-5	4117195	CABLE, CLUTCH	1				
2-6	2703444	COVER, DRIVE LA4	1				
2-7	2703445	COVER, TINE LA4	1				
2-8	2703611	CHAIN, #40 124P W/CONN	1				
2-9	4113841	LINK, #40 CHAIN NICKEL	1				
2-10	2703616.7	BRACKET AY, COVER	1				
2-11	48228-1A	CLIP-CABLE INSULATED	3				
2-12	822474	SPACER	2				
2-13	306372	PIN,COTTER.09.50	2				
2-14	64139-23	BLT-WLF 5/16-18 X 1-3/4	4				
2-15	64163-61	WSHR .81X.406X16GA	A/R				
2-16	4109880.7	LATCH, WEIGHT	2				
2-17	4113746	SPRING, EXT .687 X 6.0	2				
2-18	4113972.7	COVER, CHAIN LAWNNAIRE	1				
2-19	4114101	ROD, ADJUSTMENT	2				
2-20	4114111	SPRING, TORSION 1.19	2				
2-21	4114319	BELT, 4L-480 KEVLAR	1				
2-22	4114608	BUSHING, SH .390 ID X .71	2				
2-23	4115632	KNOB, 2.5" .38-24	2				
2-24	521608	PULLEY,4 IN DIA	1				
2-25	522516	MOUNT, ISOLATION (KC)	4				
2-26	4118356	SPRING, EXTENSION	1				
2-27	823225	PIN,CLVIS.19DIA X 1.0LG	2				
2-28	64164-11	KEY-3/16X3/16X1-1/4 SQ	1				
2-29	64229-01	LOCKNUT-NYLON 1/4-20	6				
2-30	64141-6	NUT, 5/16-18	8				
2-31	548960	SPROCKET,IDLER	2				
2-32	64123-114	BOLT-HEX 1/4-20X1	8				
2-33	800531	NUT,.38-24 HX CRWNLOCK	2				
2-34	800026	SCREW, 1/4 -20 X 3/4	2				
2-35	64163-03	WSHR-.256IDX.62ODX18GA	5				
2-36	64268-03	NUT-FL NYLON LOCK 3/8-16	4				
2-37	64123-47	BLT-HEX 5/16-18X1-1/4	2				
2-38	64262-018	BLT-FLG HD 3/8-16 X 1-3/4	2				
2-39	64262-014	BLT-FLG HD 3/8-16 X 2	2				
2-40	800862	SCRW,.25-20.50	2				
2-41	813379	PIN,CLEVIS .25 .68 PS	1				

# HANDLE GROUP

Lawnaire  
IV

FIGURE 3





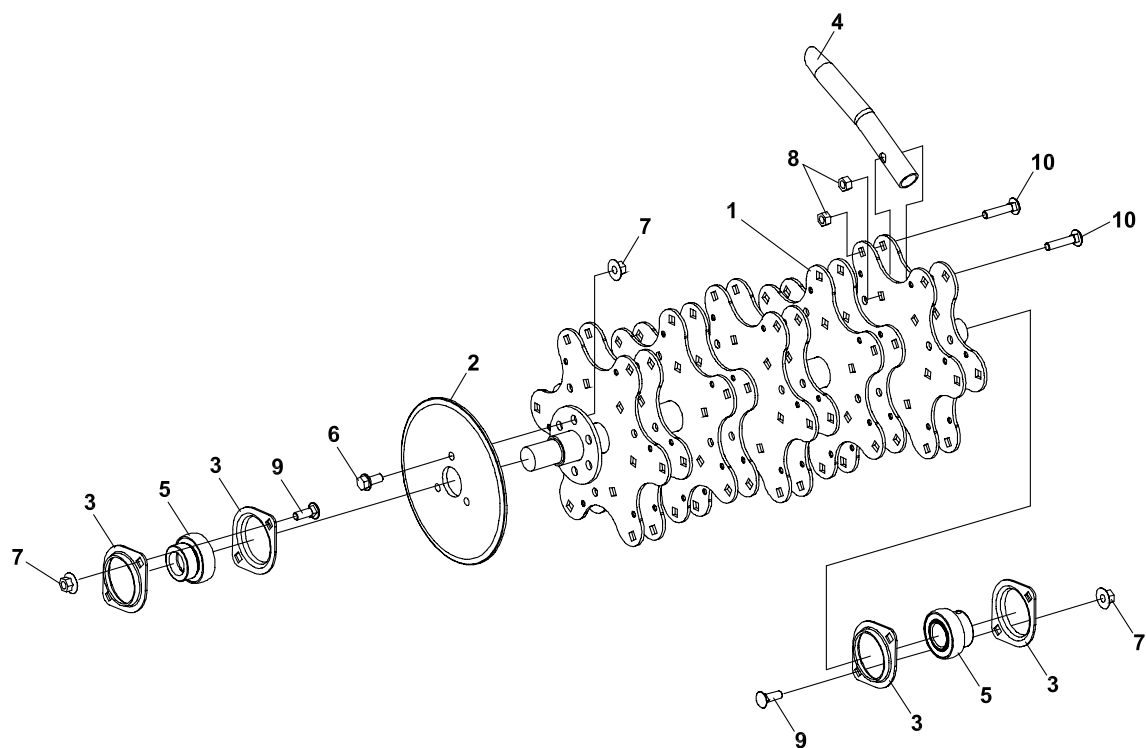
# Lawnaire IV

## HANDLE GROUP

FIGURE 3

ITEM	PART NO.	DESCRIPTION	QTY	ITEM	PART NO.	DESCRIPTION	QTY
3-1	103867	WSHR,,31.69.06 YS FLT	2				
3-2	4137975.7	HANDLE AY, LA IV	1				
3-3	2703059.7	HANDLE, HGHT ADJ. LA IV	1				
3-4	2703067.7	TUBE, CONTROL LA IV & V	2				
3-5	2703070.7	BAIL AY, LA IV & V	1				
3-6	2703185	CNTRL AY, THROTTLE 43	1				
3-7	64123-69	BOLT-5/16-18X1-1/2 HEX	2				
3-8	517226	BRG,SLV .33 .50 .20	4				
3-9	518438	BUSHING.39IDX.50ODX.35	4				
3-10	521679	BUSHING	2				
3-11	523139	GRIP,HANDLE	2				
3-12	4116398	BUSHING	4				
3-13	548477	WASHER	2				
3-14	64139-24	BLT-WLF 3/8-16 X 1	2				
3-15	64018-7	BLT-CRG 3/8-16X1-1/4	2				
3-16	64018-9	BLT-CRG 5/16-18X3/4 G5	2				
3-17	64268-02	NUT-FL NYLN LCK 5/16-18	6				
3-18	64268-03	NUT-FL NYLN LCK 3/8-16	4				
3-19	64262-007	BLT-FLG HD 5/16-18 X 1	2				
3-20	819195	TSCRW,#8-18.50 SLF-DRL	2				
3-21	822474	SPACER	2				
3-22	830165	BUSHING	2				
3-23	64141-2	NUT-WLF 1/4-20	2				
3-24	800026	SCREW, 1/4 -20 X 3/4	1				
3-25	809069	CLIP	1				

FIGURE 4



# Lawnaire IV

## TINE WHEEL GROUP

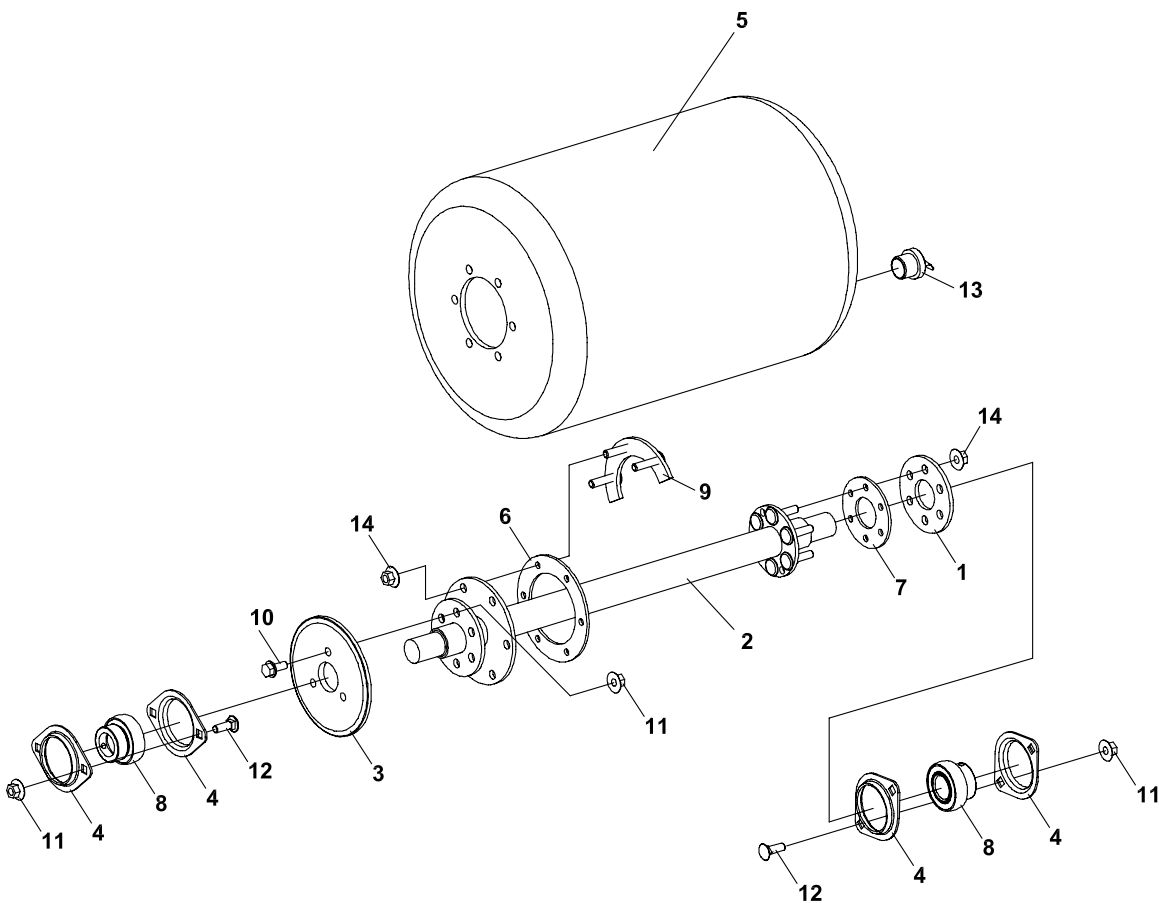
FIGURE 4

ITEM	PART NO.	DESCRIPTION	QTY	ITEM	PART NO.	DESCRIPTION	QTY
4-1	2702742.7	TINE WHEEL AY, LA4	1				
4-2	2703160	SPROCKET, 42T.50P	1				
4-3	2703508	FLANGE, BEARING 2.04 I.D.	4				
4-4	522361	TINE,CORING 3/4	30				
4-5	545786	BEARING ASSEMBLY	2				
4-6	64139-08	BOLT-5/16-18X3/4 WLF	3				
4-7	64141-6	NUT, 5/16-18	7				
4-8	64151-15	LOCKNUT-CTR 5/16-18	60				
4-9	64018-9	BLT-CRG 5/16-18X3/4 G5	4				
4-10	800606	CBOLT,.31-18 1.50 YS G5	60				

**DRUM GROUP**

**Lawnaire  
IV**

**FIGURE 5**



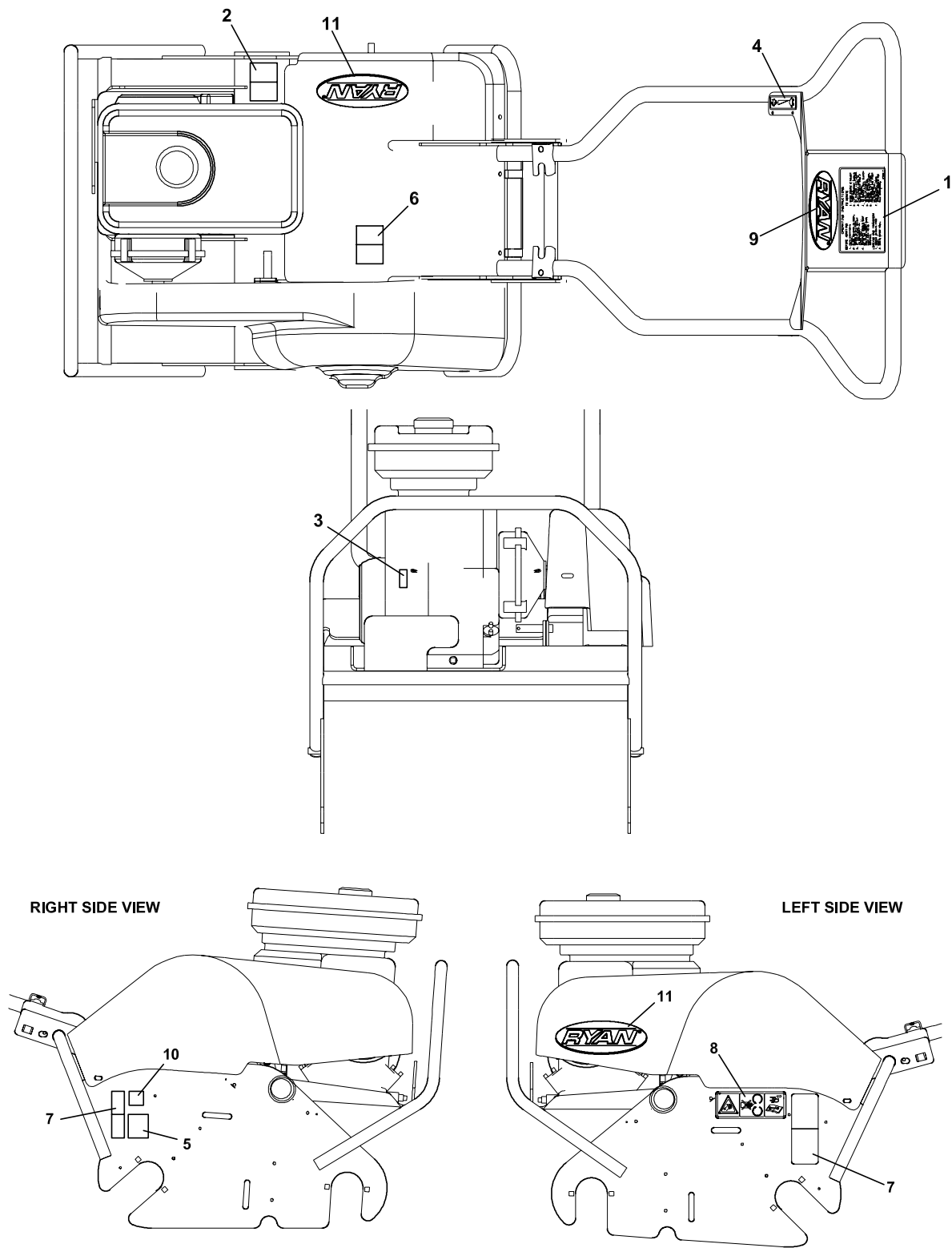
# Lawnaire IV

## DRUM GROUP

FIGURE 5

ITEM	PART NO.	DESCRIPTION	QTY	ITEM	PART NO.	DESCRIPTION	QTY
5-1	2702741.7	PLATE, FLANGE	1				
5-2	2703102.7	DRIVE AY, LA4 DRUM	1				
5-3	2703157	SPROCKET, 30T .50P	1				
5-4	2703508	FLANGE, BEARING 2.04 I.D.	4				
5-5	2703783	DRUM, WATER LA4	1				
5-6	522480	GASKET,4.50 DIA.	1				
5-7	522481	GASKET,3.00 DIA.	1				
5-8	545786	BEARING ASSEMBLY	2				
5-9	545887	RING AY-SPLIT	2				
5-10	64139-08	BOLT-5/16-18X3/4 WLF	3				
5-11	64141-6	NUT, 5/16-18	7				
5-12	64018-9	BLT-CRG 5/16-18X3/4 G5	4				
5-13	821274	PLUG, DRAIN	1				
5-14	64025-02	NUT-HEX 5/16-18	12				

FIGURE 6



# Lawnaire IV

## DECAL GROUP-LAWNNAIRE IV

FIGURE 6

ITEM	PART NO.	DESCRIPTION	QTY	ITEM	PART NO.	DESCRIPTION	QTY
6-1	4125859	LABEL-WARN & ENGAGE	1				
6-2	2000641	LBL-EXPLOSION FUEL EEC	1				
6-3	4127143	LABEL-ON OFF, EC	1				
6-4	4115768	DECAL, HAND THROTTLE	1				
6-5	009034760	DECAL-NOISE 100 dB	1				
6-6	009034920	DECAL-WARNING	1				
6-7	524541	DECAL,DANGER HNDS&FT	2				
6-8	840697	DECAL,WARNING BELT	1				
6-9	4161125	LABEL-RYAN	1				
6-10	2000646	LABEL-CE 95	1				
6-11	4161123	LABEL-RYAN	2				

COMMERCIAL GROUNDS CARE, INC.  
ONE BOB-CAT LANE  
P.O. BOX 469  
JOHNSON CREEK, WI 53038  
920-699-2000  
[www.cgcequip.com](http://www.cgcequip.com)

BOB-CAT BUNTON RYAN STEINER

