

MAN 4158520
Rev. a 4-2007



MODEL:
75-70710
TRACTOR CAB 420/430 CB420



PARTS MANUAL

TRACTOR CAB

IMPORTANT MESSAGE

Thank you for purchasing this Schiller Grounds Care, Inc. product. You have purchased a world class product, one of the best designed and built anywhere.

This product comes with an Owner/Operator's Manual. The useful life and good service you receive from this product depends to a large extent on how well you read and understand this manual. Treat this product properly and adjust it as instructed, and it will give you many years of reliable service.

See a Schiller Grounds Care, Inc. dealer for any service or parts needed. Schiller Grounds Care, Inc. service ensures that you continue to receive the best results possible from Schiller Grounds Care, Inc. products. You can trust Schiller Grounds Care, Inc. replacement parts because they are manufactured with the same high precision and quality as the original parts.

Schiller Grounds Care, Inc. designs and builds its equipment to serve many years in a safe and productive manner. For longest life, use this product only as directed in the manual, keep it in good repair and follow safety warnings and instructions. You'll always be glad you did.

Schiller Grounds Care, Inc.
One Bob Cat Lane
Johnson Creek, WI 53038-0469

TABLE OF CONTENTS	FIGURES	PAGE
INTRODUCTION		2
SPECIFICATIONS		3
SAFETY		4, 5
ASSEMBLY INSTRUCTIONS		6-9
INSTALLATION		10
REMOVAL		11
CAB PARTS	FIGURE 1	12, 13

DESCRIPTION

The sturdy CB420 cab is carefully designed to fit the model 420 and 430 tractor equipped with a ROPS rollbar. It is extremely useful in cold weather when operating a snowblower, V-blade, or a power angle blade. Exceptional features include ease of entry from either side, full glass windshield and back window, and lightweight removable doors. Supported by the ROPS rollbar and equipped with a seat belt, the operator has added comfort and safety protection. There are a few limitations, however, with the cab installed. Overall visibility is good, but portions of the cab create blind spots.

A windshield wiper is standard equipment. Additional lights and safety lights may be added as desired by the owner.

NOTE: The CB420 cab cannot be used with the front end loader, vertical auger or boom mower attachments when the mounting shaft is in place.

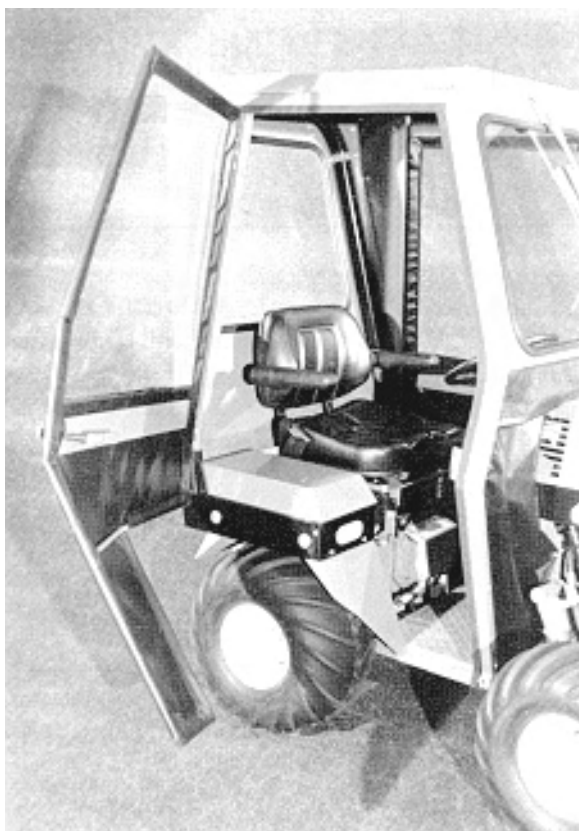


TRACTOR CAB

SPECIFICATIONS

SPECIFICATIONS

Overall Height - Installed	68"
Overall Width	45"
Cab Length	48"
Head Room	40"
Inside Roof Width	30"
Roof Length	42"
Roof Width (outside).....	35"



NOTICE !!!

Unauthorized modifications may present **extreme** safety hazards to operators and bystanders and could also result in product damage.

Schiller Grounds Care, Inc. strongly warns against, rejects and disclaims any modifications, add-on accessories or product alterations that are not designed, developed, tested and approved by Schiller Grounds Care, Inc. Engineering Department. Any Schiller Grounds Care, Inc. product that is altered, modified or changed in any manner not specifically authorized after original manufacture—including the addition of “after-market” accessories or component parts not specifically approved by Schiller Grounds Care, Inc.—will result in the Schiller Grounds Care, Inc. Warranty being voided.

Any and all liability for personal injury and/or property damage caused by any unauthorized modifications, add-on accessories or products not approved by Schiller Grounds Care, Inc. will be considered the responsibility of the individual(s) or company designing and/or making such changes. Schiller Grounds Care, Inc. will vigorously pursue full indemnification and costs from any party responsible for such unauthorized post-manufacture modifications and/or accessories should personal injury and/or property damage result.



This symbol means:

**ATTENTION!
BECOME ALERT!**

Your safety and the safety of others is involved.

Signal word definitions:

The signal words below are used to identify levels of hazard seriousness. These words appear in this manual and on the safety labels attached to Schiller Grounds Care, Inc. machines. For your safety and the safety of others, read and follow the information given with these signal words and/or the symbol shown above.

DANGER

DANGER indicates an imminently hazardous situation which, if not avoided, **WILL** result in death or serious injury.

WARNING

WARNING indicates a potentially hazardous situation which, if not avoided, **COULD** result in death or serious injury.

CAUTION

CAUTION indicates a potentially hazardous situation which, if not avoided, **MAY** result in minor or moderate injury. It may also be used to alert against unsafe practices or property damage.

CAUTION

CAUTION used without the safety alert symbol indicates a potentially hazardous situation which, if not avoided, **MAY** result in property damage

Schiller Grounds Care, Inc.

One Bobcat Lane
Johnson Creek, WI 53038 U.S.A
Phone: 920-699-2000
Fax: 920-699-3683

MODEL NUMBER

SERIAL NUMBER

MODEL NUMBER: This number appears on sales literature, technical manuals and price lists.

SERIAL NUMBER: This number appears only on your mower. It contains the model number followed consecutively by the serial number. Use this number when ordering parts or seeking warranty information.

GENERAL SAFETY

1. Read and understand the Owner's Manual before attempting to operate this machine.
2. Operate all controls from the operator's seat. **NO RIDERS.**
3. Keep all shields in place and safety switches adjusted properly.
4. Do not leave equipment unattended. STOP the engine and remove the key.
5. Do not allow minors or the inexperienced to operate this machine.
6. Keep people and pets a safe distance away from machine using power driven attachments. Injury could result from flying debris.

OPERATING SAFETY

1. **DO NOT attempt to work on unit or any attachments with the engine running. STOP ENGINE!**
2. Before leaving operator's seat:
 - **Lower attachments**
 - **Stop PTO driven units**
 - **Set PARKING brake**
 - **Stop engine.**

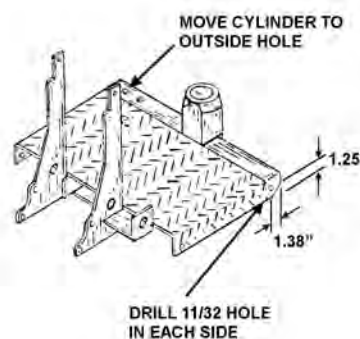
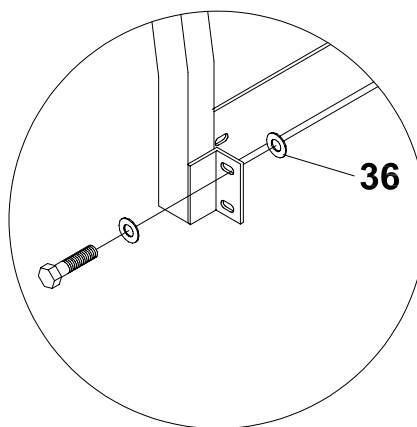
1. Have a ROPS approved roll bar and seat belt mounted to your tractor, using the roll bar instructions.
2. Loosen the ROPS and add (1) washer **36** between the ROPS and cab on both sides. Refer to parts list on Page 13.

NOTE: If you have a canopy on the roll bar, it needs to be removed.

3. (420 only, if applicable) Move steering cylinder mount on the treadplate to the outside hole. **THIS IS VERY IMPORTANT!** (See Drawing A)
4. Open the hardware package and sort the bolts and nuts according to size.
5. Slide the rear panel over the roll bar and fasten with (4) "W" shaped clamps **A** and (8) 5/16 X 1" bolts. Leave bolts loose at this time.
6. Lay the roof panel in place and bolt to the rear panel with (9) 5/16 X 3/4" bolts.

NOTE: The rear panel may need to be moved to fit roof panel as shown in Photo 3 Page 7.

7. Drill (2) 11/32" holes in the front corners of the tread plate as shown in Drawing A.
8. Raise the tractor hood, and loosen the (4) hood pivot mounting bolts. Slide the hood down (or forward) as far as possible. Tighten the bolts at this time. Lower the hood, checking for proper fit and alignment. Loosen bolts and change as required for proper alignment.



Drawing A

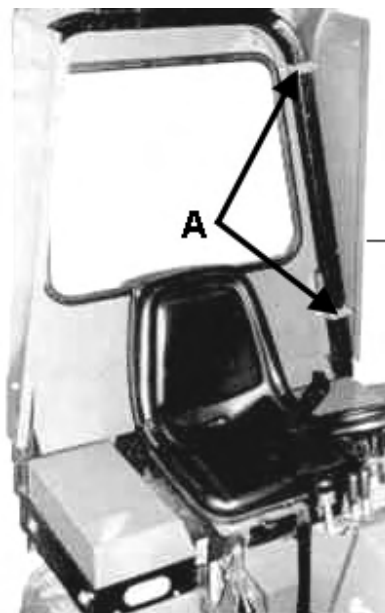


Photo 1

TRACTOR CAB

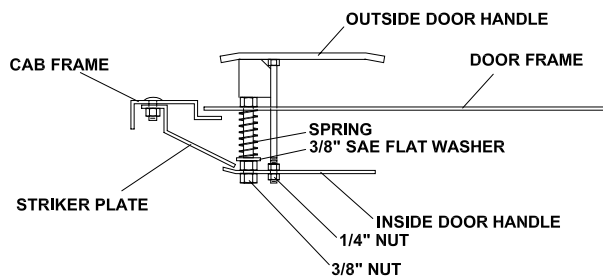
ASSEMBLY INSTRUCTIONS

9. Set the front panel on the tractor and insert two 5/16 X 1" bolts through the frame and treadplate. Next, bolt the top of the front panel to the front of the roof panel as shown.
10. Bolt the four hinges to the rear panel with (8) 5/16 X 3/4" bolts as shown in Photo 3.
11. Tighten all bolts that have been installed at this time. Install weatherstrip around the door opening along the top and front sides as shown in Photo 3.

NOTE: Pull up on the side panels before tightening clamps **A**.

12. Attach striker plate to cab frame as shown in Drawing B. Install door on hinges. Assemble latch to door as shown in Drawing B. Adjust striker plate forward or back to provide the inside handle to catch approximately 1/2". Adjust the tightness of the latch by adjusting the 3/8" and 1/4" nuts in or out. In a few cases the striker plate may need to be bent slightly.

NOTE: Doors may require bending slightly for best fit.



Drawing B



Photo 2



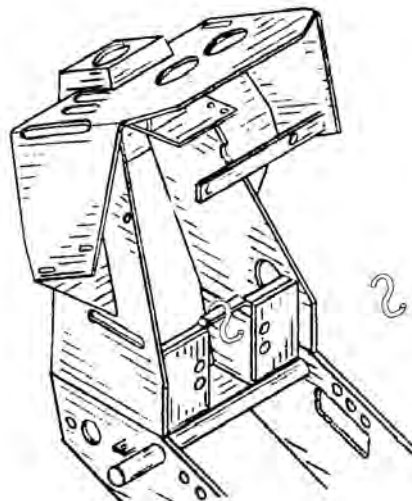
Photo 3

13. From the left side of the tractor, install the "S" hook on the top edge of the pump mount plate as shown in Drawing C.

14. Stretch each top elastic cord from the fabric panel across the front panel to the extended bolts. Pull the middle elastic cord through the tractor above the drive shaft. Loop the elastic cord over the "S" hook to prevent rubbing the driveshaft. Take the bottom elastic cord through to the other side in front of the frame pivot as shown Photo 4.

15. Mount the wiper above the windshield according to the wiper instructions. Mount the wiper blade on the wiper arm with the short end of the blade away from the wiper motor. Check the wiper blade path so that it does not contact the rubber moulding. Fasten the inline fuse to the auxiliary side of the circuit breaker and route the wire to the wiper.

16. On Kubota engine models, install the air intake tube guard on the left rear of the black side panel. The guard bolts to the same holes that the side panel does and uses the existing hardware. The guard is to prevent the cab fabric from plugging the air intake tube and stalling the engine.



Drawing C
(420 is shown.....430 is similar)



Photo 4

WWF WINDSHIELD WIPER INSTALLATION (Except 1000 Series)

1. Locate mounting position of wiper assembly.
2. Determine whether adequate space is available.
3. Locate approximate stud position on header. See that blade will wipe the desired area of windshield.
4. Should a change of wiping angle be needed:
 - a. Remove gear case cover.
 - b. Remove spring clip on pivot shaft arm.
 - c. Lift link and install in desired degrees on gear.
 - d. Reverse the above procedure to reassemble.

Wiping angles available are 85, 100, 110, and 120 degrees.

5. Distance between stud hole and bracket hole

should be 6.25 inches.

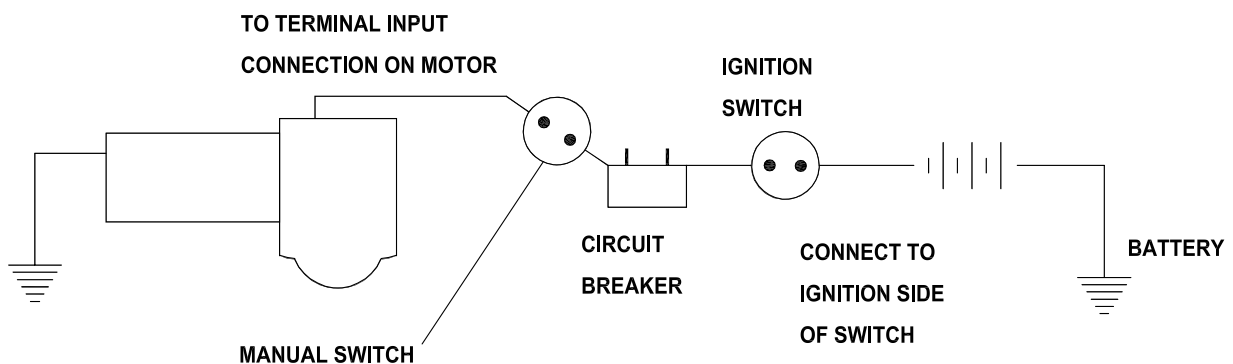
6. Drill tower stud hole first using a 5/8" drill.
7. Drill mounting bracket hole for a No. 10 screw.
8. Place the wiper in position and install the mounting stud attaching nut and washers. Tighten to 30-50 in. lbs.
9. Wiring - See diagram. On applications where mounting is of wood, fiber, glass etc., a separate ground wire must be attached to the motor and connected to a battery ground point. A number 14 wire is recommended.

NOTE: Blade and arm should be mounted approximately 1" minimum away from windshield molding. Make certain the wiper blade does not strike at either end of the wiping stroke. If blade strikes at both ends, it will be necessary to shorten the arm and blade length or reduce the wiping angle of the wiper. (Refer to Step 5.)

MAXIMUM ARM AND BLADE RECOMMENDATION

1 - 15" Arm

1 - 15" Blade



Wiring Diagram for WWF Single Speed

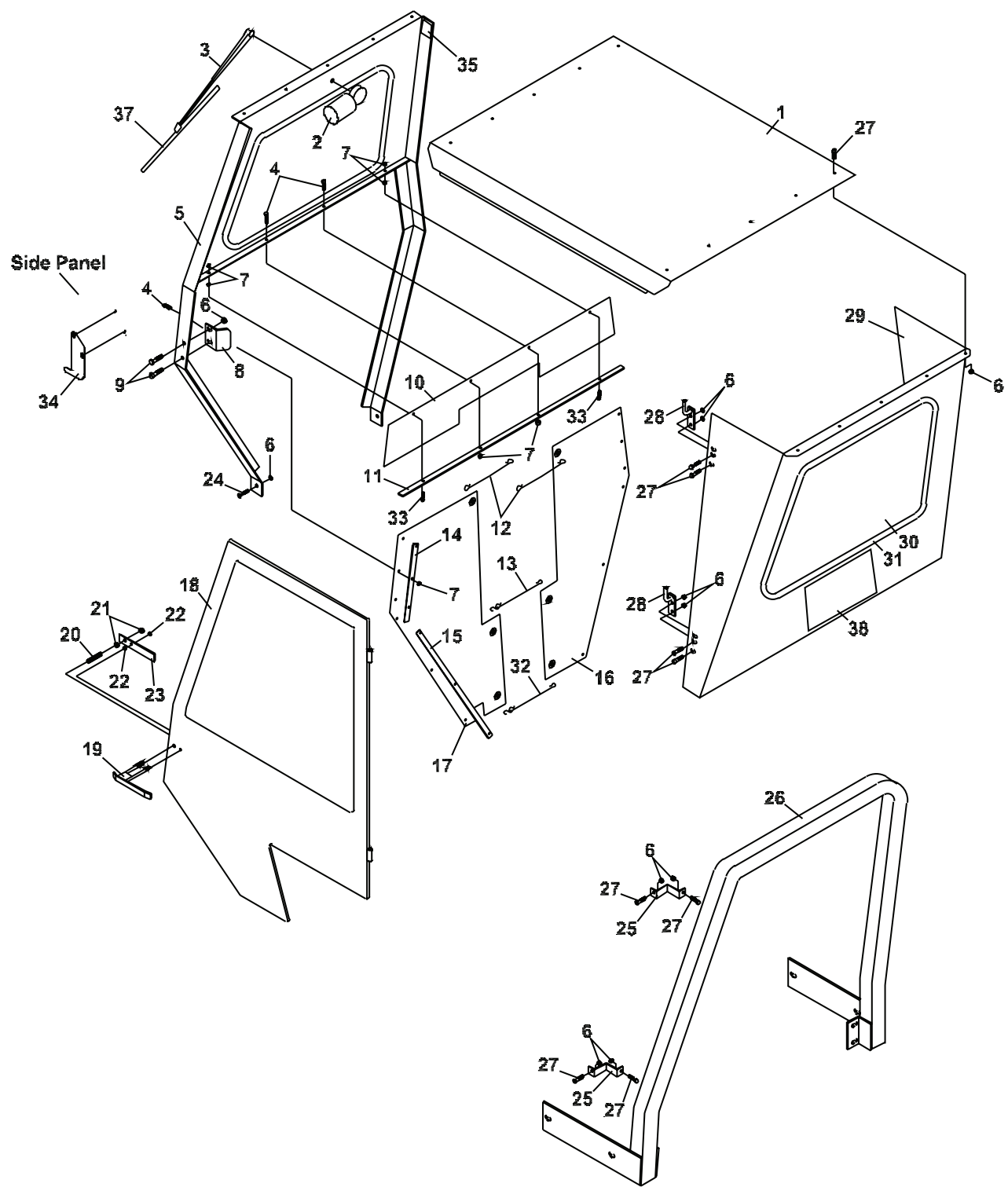
INSTRUCTIONS FOR MOUNTING ASSEMBLED CAB ON TRACTOR

1. Tractor must be equipped with a rollbar.
2. With the cab doors removed, position the assembled cab into position around the rollbar.
3. Fasten the cab to the rollbar with the “W” clamps and 5/16 X 1 bolts.
4. Fasten the lower front cab frame to the front corners of the tread plate with 5/16 X 1 bolts.
5. Install the cab doors and check for proper latch closure. Adjust latches as needed.
See Page 7 Step 12 for adjustments.
6. Attach the elastic cords to position the front fabric panels around the tractor. Loop the elastic cord over the “S” hook to prevent rubbing the driveshaft.
7. Connect wiring for the wiper motor.
8. **IMPORTANT!** (420 tractors only, if applicable) Check steering cylinder mounting to be certain it is mounted in the outside hole of the tread plate to limit turning radius.

INSTRUCTIONS FOR REMOVING ASSEMBLED CAB FROM TRACTOR

1. Disconnect wiring to wiper motor.
2. Detach the elastic cords which position the front fabric panels around the tractor.
3. Remove the doors.
4. Remove the bolts at the front corners of the tread plate and cab frame.
5. Remove the "W" clamps which clamp the cab to the rollbar.
6. Get an assistant to help and carefully lift the cab up and away from the rollbar.
7. The rollbar may remain on the tractor.
8. (420 tractors only, if applicable) The steering cylinder may be returned to the original inner hole.

FIGURE 1



TRACTOR CAB

CAB PARTS

FIGURE 1

ITEM	PART NO.	DESCRIPTION	QTY	ITEM	PART NO.	DESCRIPTION	QTY
1	60-365.17	ROOF PANEL	1	*	56-027-66	TRIM-TRIM-LOC 4-1/2"	1
	44-133	HEADLINER	1	35	4116761	LABEL-MADE IN USA	1
2	35-053	MOTOR-WINDSHIELD WIPR	1	36 **	64163-19	WASHER-33/64X1-1/4X12GA	2
3	35-054	WINDSHIELD WIPR ARM	1	37	35-055	WIPER BLADE	1
4	64139-04	BOLT-WLF 1/4-20X3/4	14	38	4161122	LABEL-STEINER COUNTRY	1
5	62-845.17	PANEL-FRONT WINDOW	1	39*	56-052-1	S-WEATHER STRIP 25'	1
6	64141-6	NUT, 5/16-18	52	<p>* NOT ILLUSTRATED</p> <p>** SHOWN ON PAGE 6</p>			
7	64141-2	NUT-WLF 1/4-20	18				
8	64-343.7	STRIKER PLATE	2				
9	99-K20	BOLT, 5/16-18 X 3/4	4				
10	44-083	FABRIC-CENTER PANEL	1				
	(420 ONLY)						
	44-144	FABRIC-CENTER PANEL	1				
	(430 ONLY)						
11	64-357.7	RETAINER STRAP-36"	1				
12	56-049-24	CORD-ELASTIC 24"	2				
13	56-049-14	CORD-ELASTIC 14"	1				
	45-039	HOOK-"S"	1				
14	64-356.7	RETAINER STRAP-9"	2				
15	64-355.7	RETAINER STRAP-23"	2				
16	44-084	FABRIC-RT SIDE PANEL	1				
17	44-085	FABRIC-LFT SIDE PANEL	1				
18	4136847	DOOR-RIGHT CAB	1				
	4136853	DOOR-LEFT CAB	1				
19	64-342.7	LATCH-OUTER DOOR	2				
20	41-021	SPRING	2				
21	64025-05	NUT-3/8-16 HEX	4				
22	64025-01	NUT-1/4-20 HEX	4				
23	64-468.7	HANDLE-INNER DOOR	2				
24	99-K02	BOLT, FLANGE 5/16-18 X 1	2				
25	64-341.7	CLAMP, TR CAB	4				
26	4165031.7	WLDMT-ROPS 420-430	1				
27	64139-08	BOLT-5/16-18X3/4	42				
28	64-340.7	HINGE-CAB DOOR	4				
29	62-557.17	PANEL-REAR WINDOW	1				
30	06-021	GLASS-WINDSHIELD	2				
	(FRONT & REAR)						
31	57-009-1	MOULDING-WINDSHEILD	2				
	(CUT TO 126")						
32	56-049-06	CORD-ELASTIC 6FT.	1				
	45-039	HOOK-"S"	1				
33	97-0410	CARRIAGE BOLT-1/4X1-1/4	2				
34	60-689.7	GUARD	1				

COMMERCIAL GROUNDS CARE, INC.
ONE BOB-CAT LANE
P.O. BOX 469
JOHNSON CREEK, WI 53038
920-699-2000
www.cgcequip.com

BOB-CAT BUNTON RYAN STEINER



SCHILLER GROUNDS CARE, INC.
ONE BOB-CAT LANE
P.O. BOX 469
JOHNSON CREEK, WI 53038
920-699-2000
www.schillergc.com

