



STEINER[®]

OWNER/OPERATOR'S MANUAL & ILLUSTRATED PARTS LIST

MODEL:

75-70665 SNOWBLOWER-48" SB348



WARNING: If incorrectly used this machine can cause severe injury. Those who use and maintain this machine should be trained in its proper use, warned of its dangers and should read the entire manual before attempting to set up, operate, adjust or service the machine.



09-167B REV C

CALIFORNIA
Proposition 65 Warning

Diesel engine exhaust and some of its constituents are known to the State of California to cause cancer, birth defects and other reproductive harm.



WARNING

The engine exhaust from this product contains chemicals known to the State of California to cause cancer, birth defects or other reproductive harm.

Californie Proposition 65
Avertissement

Les échappements des moteurs diesel et certains de leurs composés sont reconnus par l'Etat de Californie pour être cancérigènes, provoquer des défauts congénitaux et d'autres dangers en matière de reproduction.



AVERTISSEMENT

L'émission du moteur de ce matériel contient des produits chimiques que l'Etat de Californie considère être cancérigènes, provoquer des défauts congénitaux et d'autres dangers en matière de reproduction.

California Advertencia
de la Proposicion 65

El estado de California hace saber que los gases de escape de los motores diesel y algunos de sus componentes producen cáncer, defectos de nacimiento y otros daños en el proceso de reproducción humana.



ADVERTENCIA

El estado de California hace saber que los gases de escape de este producto contienen productos químicos que producen cáncer, defectos de nacimiento y otros daños en el proceso de reproducción humana.

SNOWBLOWER

IMPORTANT MESSAGE

Thank you for purchasing this Jacobsen product. You have purchased a world class product, one of the best designed and built anywhere.

This product comes with an Owner/Operator's Manual. The useful life and good service you receive from this product depends to a large extent on how well you read and understand this manual. Treat this product properly and adjust it as instructed, and it will give you many years of reliable service.

See a Jacobsen dealer for any service or parts needed. Jacobsen service ensures that you continue to receive the best results possible from Jacobsen products. You can trust Jacobsen replacement parts because they are manufactured with the same high precision and quality as the original parts.

Jacobsen designs and builds its equipment to serve many years in a safe and productive manner. For longest life, use this product only as directed in the manual, keep it in good repair and follow safety warnings and instructions. You'll always be glad you did.

Jacobsen, a Textron Company
One Bob Cat Lane
Johnson Creek, WI 53038-0469

TABLE OF CONTENTS	FIGURES	PAGE
DESCRIPTION/SPECIFICATIONS		2
SAFETY		3, 4
ASSEMBLY INSTRUCTIONS		5
INSTALLATION & REMOVAL		6
OPERATION		7
SERVICE		8
MAINTENANCE		9, 10
PARTS SECTION		11
AUGER HOUSING	FIGURE 1	12, 13
BLOWER & CHUTE	FIGURE 2	14, 15
CHUTE CONTROLS	FIGURE 3	16, 17
MAIN FRAME	FIGURE 4	18, 19
BELTS & IDLERS	FIGURE 5	20, 21
GEAR BOX PARTS	FIGURE 6	22, 23

DESCRIPTION/SPECIFICATIONS

SNOWBLOWER

DESCRIPTION

This Snowblower is designed to facilitate clearing of large volumes of snow from sidewalks, driveways, and small parking lots.

This is a 2-stage blower. The auger feeds the snow into the blower housing. The Snowblower is belt-driven with a chain drive from a gearbox to the 14" open-centered auger. The hydraulic controlled chute directs the snow from side to side with fingertip control of the auxiliary hydraulics. A heavy-duty wear edge shears snow cleanly from pavement or height can be regulated with adjustable skid shoes.

The Snowblower mounts on all Steiner power units with quick hitch front lift and can be installed and removed quickly.

SPECIFICATIONS

Weight:	425 lbs.
Overall Width:	49-1/2"
Overall Height:	51"
Overall Length:	43"
Opening Size:	25" high X 48" wide
Auger:	14" diameter open center
Blower:	20" diameter 3 blade
Auger Speed:	175 RPM
Blower Speed:	800 RPM
Chute:	9" diameter, 190 degree rotation
Height of Cut:	Adjustable skid shoes 0" to 1-1/4"

NOTE: Specifications are subject to change without notice.

NOTICE !!!

Unauthorized modifications may present **extreme** safety hazards to operators and bystanders and could also result in product damage.

Jacobsen, a Textron Company strongly warns against, rejects and disclaims any modifications, add-on accessories or product alterations that are not designed, developed, tested and approved by Jacobsen Engineering Department. Any Jacobsen product that is altered, modified or changed in any manner not specifically authorized after original manufacture—including the addition of “after-market” accessories or component parts not specifically approved by Jacobsen—will result in the Jacobsen Warranty being voided.

Any and all liability for personal injury and/or property damage caused by any unauthorized modifications, add-on accessories or products not approved by Jacobsen will be considered the responsibility of the individual(s) or company designing and/or making such changes. Jacobsen will vigorously pursue full indemnification and costs from any party responsible for such unauthorized post-manufacture modifications and/or accessories should personal injury and/or property damage result.



This symbol means:
ATTENTION!
BECOME ALERT!

Your safety and the safety of others is involved.

Signal word definitions:

The signal words below are used to identify levels of hazard seriousness. These words appear in this manual and on the safety labels attached to Jacobsen machines. For your safety and the safety of others, read and follow the information given with these signal words and/or the symbol shown above.

DANGER

DANGER indicates an imminently hazardous situation which, if not avoided, **WILL** result in death or serious injury.

WARNING

WARNING indicates a potentially hazardous situation which, if not avoided, **COULD** result in death or serious injury.

CAUTION

CAUTION indicates a potentially hazardous situation which, if not avoided, **MAY** result in minor or moderate injury. It may also be used to alert against unsafe practices or property damage.

CAUTION

CAUTION used without the safety alert symbol indicates a potentially hazardous situation which, if not avoided, **MAY** result in property damage.

GENERAL SAFETY

1. Read and understand the Owner's Manual before attempting to operate this machine.
2. Operate all controls from the operator's seat. **NO RIDERS.**
3. Keep all shields in place and safety switches adjusted properly.
4. Do not leave equipment unattended. STOP the engine and remove the key.
5. Do not allow minors or the inexperienced to operate this machine.
6. Keep people and pets a safe distance away from machine using power driven attachments. Injury could result from flying debris.

OPERATING SAFETY

1. **STOP ENGINE** to install drive belt.
2. **DO NOT** attempt to work on unit or any attachments with the engine running. **STOP ENGINE!**
3. Rear weight bar with 4 weights must be used with the snowblower. Remove the weights when snowblower is removed.
4. Always direct the discharge chute into an open area with adequate clearance.
5. Before leaving the tractor seat:
 - **Disengage PTO.**
 - **Set Parking brake.**
 - **Stop Engine.**



CAUTION!
BE CAREFUL! AVOID ALL OBJECTS IN THE SNOW WHICH COULD CAUSE DAMAGE TO THE SNOWBLOWER, THE OPERATOR, OR PERSONAL PROPERTY



DANGER!
DO NOT OPERATE WITH PERSONS IN THE AREA. HIGH SPEED BLOWER MAY PROPEL OBJECTS CAUSING POSSIBLE INJURY OR DEATH. REMEMBER, ROCKS GO FARTHER THAN SNOW.

ASSEMBLY INSTRUCTIONS

1. Remove the snowblower from the shipping crate.
2. Attach the end extensions in the straight position for normal use. These extensions can be reversed to increase the snowblower opening width 6 inches.
3. Remove the chute clamps and lubricate the swivel area with grease. Attach the chute and tighten the chute clamps.
4. Attach the cables to the chute control pipe. See Figure 3 for parts identification and location. Tighten the cables with the eye-bolt.
5. Check the oil level in the gearbox.
6. Check all belts for proper tension.
7. Remove the drive pulley shield and install the proper drive belt for the power unit.

NOTE:

See Belt Size Chart for Steiner Tractors and Attachments for correct belt sizes on power units.

Replace shield. (see Photo 9)

8. Attach snowblower to tractor. See Page 5 for safety instructions, Page 7 for installation and removal instructions and Page 8 for operating instructions.

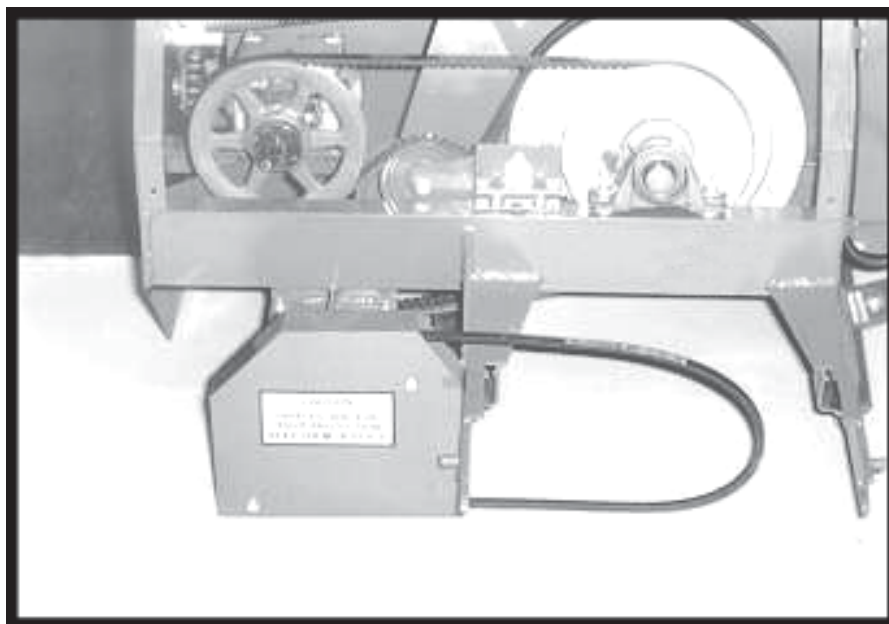


Photo 9

INSTALLATION INSTRUCTIONS

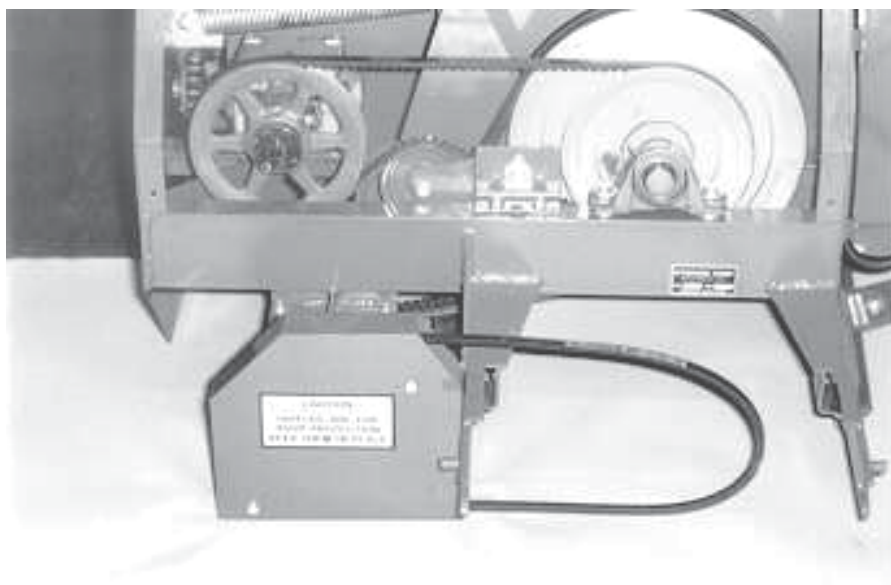
1. Attach snowblower to the power unit.
2. Be sure drive belt is in place over the left hitch arm.
3. Drive power unit into the hitch arms and latch the quick hitch handle.
4. Stop engine and install drive belt.
5. Attach the two hydraulic hoses to the quick couplers on the tractor.

NOTE: If the rotation does not match the lever operation, the hoses may be reversed.

6. A weight bar with 4 weights is required on 4-wheel drive units whenever the snowblower is installed. Install according to weight bar instructions.

REMOVAL INSTRUCTIONS

1. Lower the snowblower and stop engine.
2. Disconnect the two hydraulic hoses and install dust covers.
3. Remove the drive belt and release the quick hitch. Start the engine and back out carefully.
4. Remove the 4 weights from the weight bar.



OPERATING INSTRUCTIONS

1. Be sure the quick hitch is latched and the hoses engaged completely.
2. Engage PTO slowly and maintain engine speed at 3/4 to full throttle.
3. Low range works best for most conditions. Adjust speeds to match snow conditions. The snowblower works best with plenty of snow being fed into the blades. In light snow (4" to 6") increase travel speed.
4. Float position may be used, but carrying some of the weight with the power unit gives better traction. This may require frequent lifting and lowering on 4-wheel drive units. On the Model 220 the traction booster may be used for optimum traction.
5. If drive belt slips, adjust drive belt tension according to power unit manual.
6. Keep the chute rotation cables tight.
7. Rotate chute using the auxiliary hydraulic control lever. Try to blow snow with the wind on windy days.
8. Control the throwing distance by adjusting the chute deflectors. Move the locating strap sideways and select a different hole.

WARNING

ASSURE CLEAR DISTANCE IN THE DIRECTION OF THROWING SNOW. OBJECTS CAN BE PROPELLED FROM BLOWER CAUSING POSSIBLE DAMAGE TO PROPERTY OR INJURY TO BYSTANDERS.

CAUTION

BE ALERT! WATCH FOR BURIED OBJECTS IN THE SNOW WHICH COULD BE THROWN OR CAUSE DAMAGE TO THE MACHINE.

CAUTION

NEVER TRAVEL AT SPEEDS THAT WOULD CAUSE DAMAGE TO THE MACHINE OR INJURY TO THE OPERATOR IF THE MACHINE WERE TO BE STOPPED SUDDENLY BY AN IMMOVABLE OBJECT.

SERVICE SCHEDULE

Daily:

- Check for any signs of loose bolts and tighten as needed.
- Check drive chain for excess slack.

50 hour:

- In addition to daily service, lubricate all bearings.
- Check drive belts for proper tension and signs of cracking.
- Lubricate chute swivel areas.
- Check gearbox oil level. Oil level is 3 inches down from top of case (about half full). Use #90 gear oil.

100 hour:

- Change gearbox oil at 100 hours or four (4) weeks initially, and every 1000 hours or six (6) months of operation thereafter. Use #90 gear oil.
- Store the snowblower with the cylinder retracted.



Photo 1
BLOWER SHEAR BOLT

Serial No. 1001 - 1581... The blower and auger are equipped with safety shear bolts. Replace with 1/4 X 1 Grade 5 bolts only. Keep the shear bolts tight.

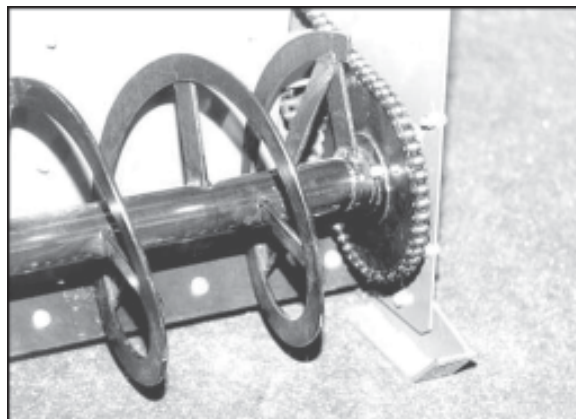


Photo 2
AUGER SHEAR BOLT

Serial No. 1582 & up ... The auger is equipped with two shear bolts. Replace with 1/4 X 1 Grade 2 bolts only. Keep the shear bolts tight.

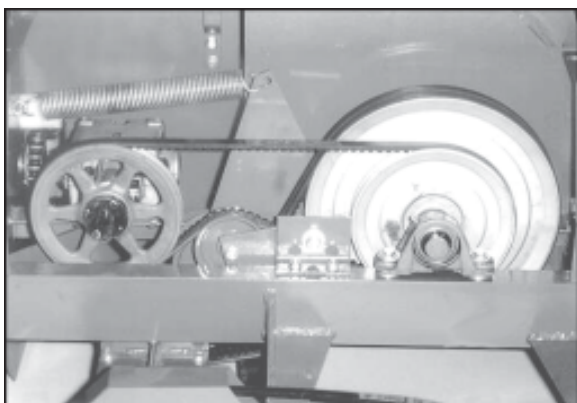


Photo 3
BLOWER

The blower can be adjusted within the blower housing by moving the shaft bearings and/or adding or removing washers under the bearings. This is necessary only when the blower rotor would strike the housing.



Photo 4
AUGER DRIVE CHAIN

Tighten auger chain with the tightener to remove slack from chain. Move down in the slot to tighten. This is a slide and not a roller.

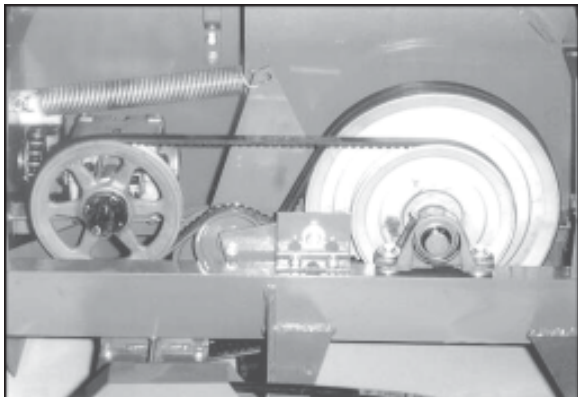


Photo 5
DRIVE BELTS

To change belts it is necessary to remove the outer bearing from the blower shaft and slide the belts between the shaft and the frame. Use only matched belts for the blower drive.

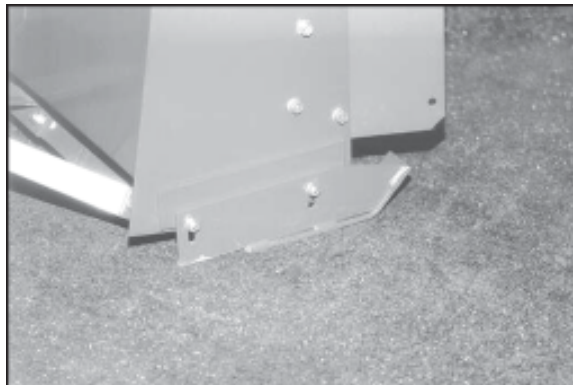


Photo 6
SKID SHOES

The skid shoes are adjusted by moving the shoes up or down in the slots provided. The shoes can be moved from side to side to obtain the lowest setting for the cutting edge to be more effective on hard surfaces.



Photo 7
CHUTE CABLES

The threaded eye-bolt can be tightened to adjust the tension on both cables.

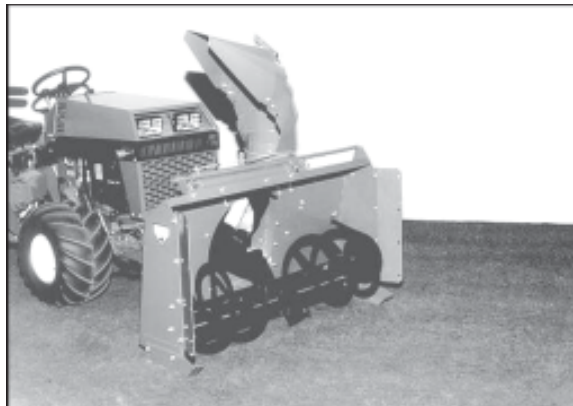


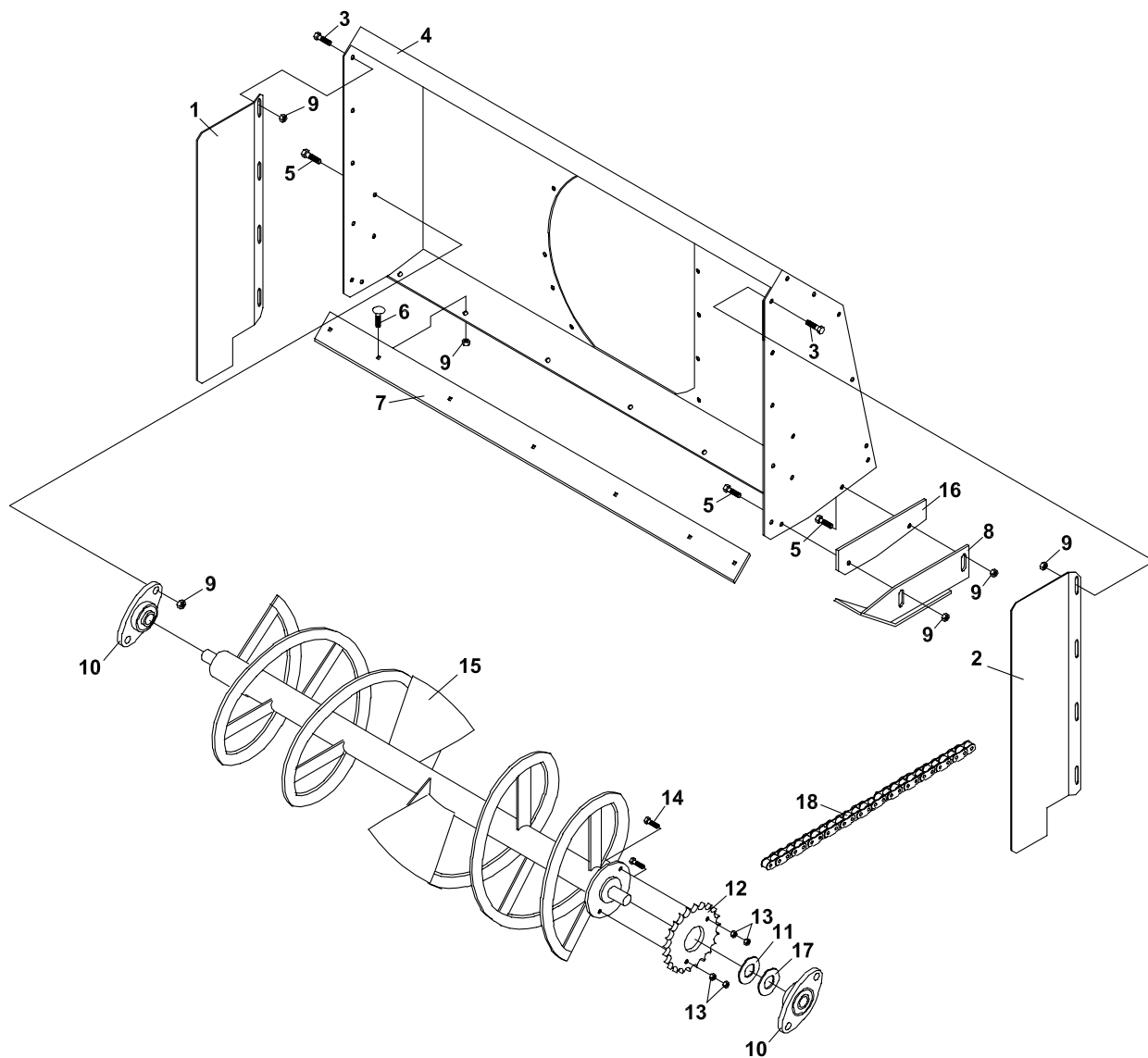
Photo 8
CUTTING EDGE

The cutting edge can be reversed when worn to give double life.

NOTE: Side extensions can be reversed to increase width of snowblower opening 6 inches.

PARTS SECTION

FIGURE 1



SNOWBLOWER

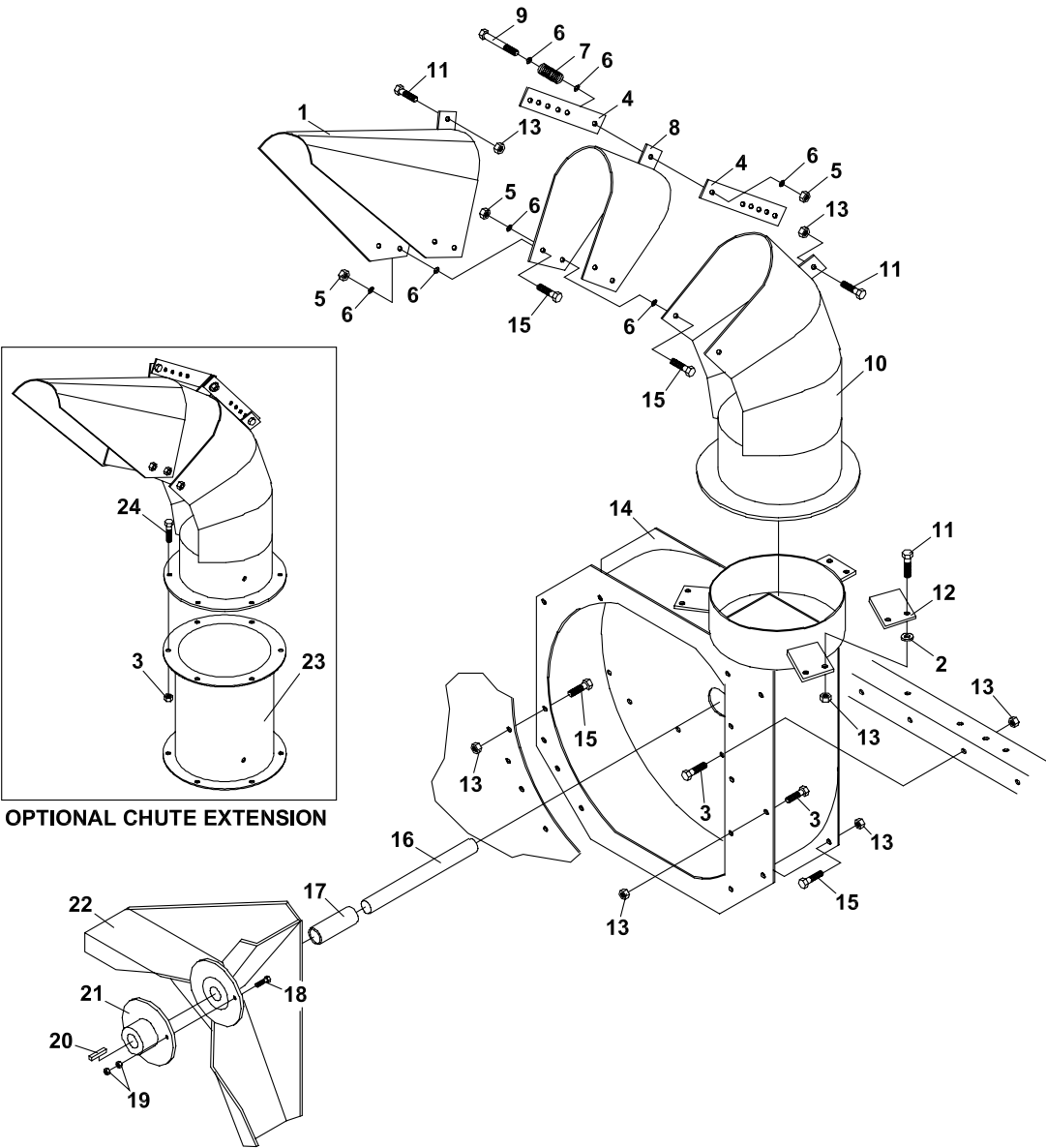
AUGER HOUSING

FIGURE 1

ITEM	PART NO.	DESCRIPTION	QTY	ITEM	PART NO.	DESCRIPTION	QTY
1-1	60-361	END EXTENSION (SN 1001 - 1713)	2	1-18	56-RC50-49	ROLLER CHAIN-49" LNG	1
	60-638.17	WING-SNOWBLOWER RT (SN 1714 -)	1		81-055	HALF LINK-#50 RLR CHN (SN 1001- 1713)	2
1-2	60-634.17	WING-SNOWBLOWER LFT (SN 1714 -)	1		81-055	HALF LINK-#50 RLR CHN (SN 1714 -)	2
1-3	64139-21	BLT-WLF 3/8-16X3/4	8		81-053	CONNECTING LINK-#50	1
1-4	62-550.17	AUGER HOUSING	1	*	00-092	DECAL-DNGR HNDS FEET	2
1-5	64139-24	BLT-WLF 3/8-16 X 1	8	*	00-035	DECAL-CTN SNOWBLOWER	2
1-6	64018-3	BOLT-3/8-16X1 CARRIAGE	7				
1-7	78-004	CUTTING EDGE	1				
*	78-037	HD CUTTING EDGE-48" (OPTIONAL)	1				
*	99-17	BOLT-BUTTON HEAD 3/8X1	7				
1-8	78-030	SKID SHOE-RT (SN 1001 - 1713)	1				
	78-031	SKID SHOE-LFT (SN 1001 - 1713)	1				
	78-032	SKID SHOE-RT (SN 1714 -)	1				
	78-033	SKID SHOE-LFT (SN 1714 -)	1				
1-9	64141-4	NUT-WLF 3/8-16	23				
1-10	4138878	2-BOLT FLANGE BEARING	2				
1-11	64163-84	WASHER-1.015 X 1.75 X.125	1				
1-12	82-067	SPROCKET-SPECIAL 5045	1				
1-13	64025-01	NUT-1/4-20 HEX (SN 1001 - 1581)	2				
	64025-01	NUT-1/4-20 HEX (SN 1582 -)	4				
1-14	64123-114	BOLT-HEX 1/4-20X1 (SN 1001 - 1581)	1				
	99-D0408	BOLT-1/4 X 1 GRADE 2 (SN 1582 -)	2				
1-15	80-216	AUGER	1				
	80-254	DRIVE SHAFT-AUGER	1				
1-16	64-550	SPACER	2				
1-17	99-B17	MACHINERY WASHER-1"	18				

* NOT ILLUSTRATED

FIGURE 2



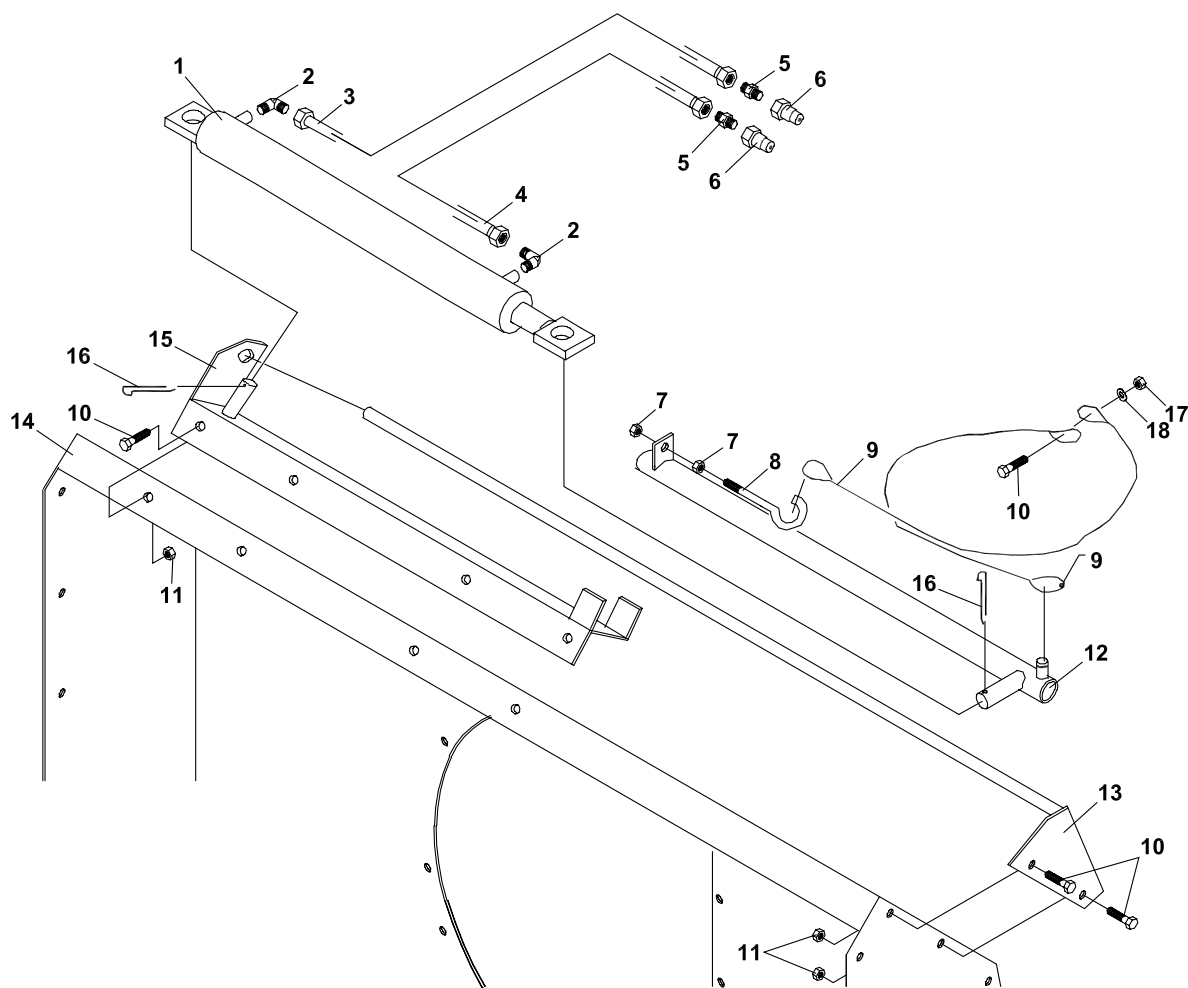
SNOWBLOWER

BLOWER & CHUTE

FIGURE 2

ITEM	PART NO.	DESCRIPTION	QTY	ITEM	PART NO.	DESCRIPTION	QTY
2-1	64-336.17	CHUTE EXTENSION	1				
2-2	99-B12	SPACER-1/4" THICK	6				
2-3	64229-04	S LOCKNUT-NYLN 7/16-14	6				
2-4	42-297	CHUTE ADJUSTER	2				
2-5	64229-03	LOCKNUT-NYLON 3/8-16	5				
2-6	64163-61	WSHR .81X.406X16GA	11				
2-7	41-039	SPRING COMPRESSION	1				
2-8	64-274.17	CHUTE DEFLECTOR	1				
2-9	64123-87	BOLT-HEX 3/8-16X1-3/4	1				
2-10	62-497.17	CHUTE	1				
2-11	64139-24	BLT-WLF 3/8-16 X 1	8				
2-12	64-273	CHUTE CLAMP	3				
2-13	64141-4	NUT-WLF 3/8-16	31				
2-14	62-496.17	BLOWER HOUSING	1				
2-15	64139-21	BLT-WLF 3/8-16X3/4	22				
2-16	80-217	BLOWER SHAFT	1				
2-17	85-B28	BUSHING	1				
2-18	64123-114	BOLT-HEX 1/4-20X1	1				
2-19	64025-01	NUT-1/4-20 HEX	2				
2-20	64164-10	1/4X1/4X1-1/4 MACH KEY	1				
2-21	80-219	HUB-BLOWER DRIVE	1				
2-22	80-218	ROTOR-BLOWER	1				
	70-168	OPTIONAL CHUTE EXT KIT					
2-23	64-992	CHUTE EXTENSION WLDMT	1				
2-24	64123-91	BLT-HEX 7/16-14X3/4	6				

FIGURE 3



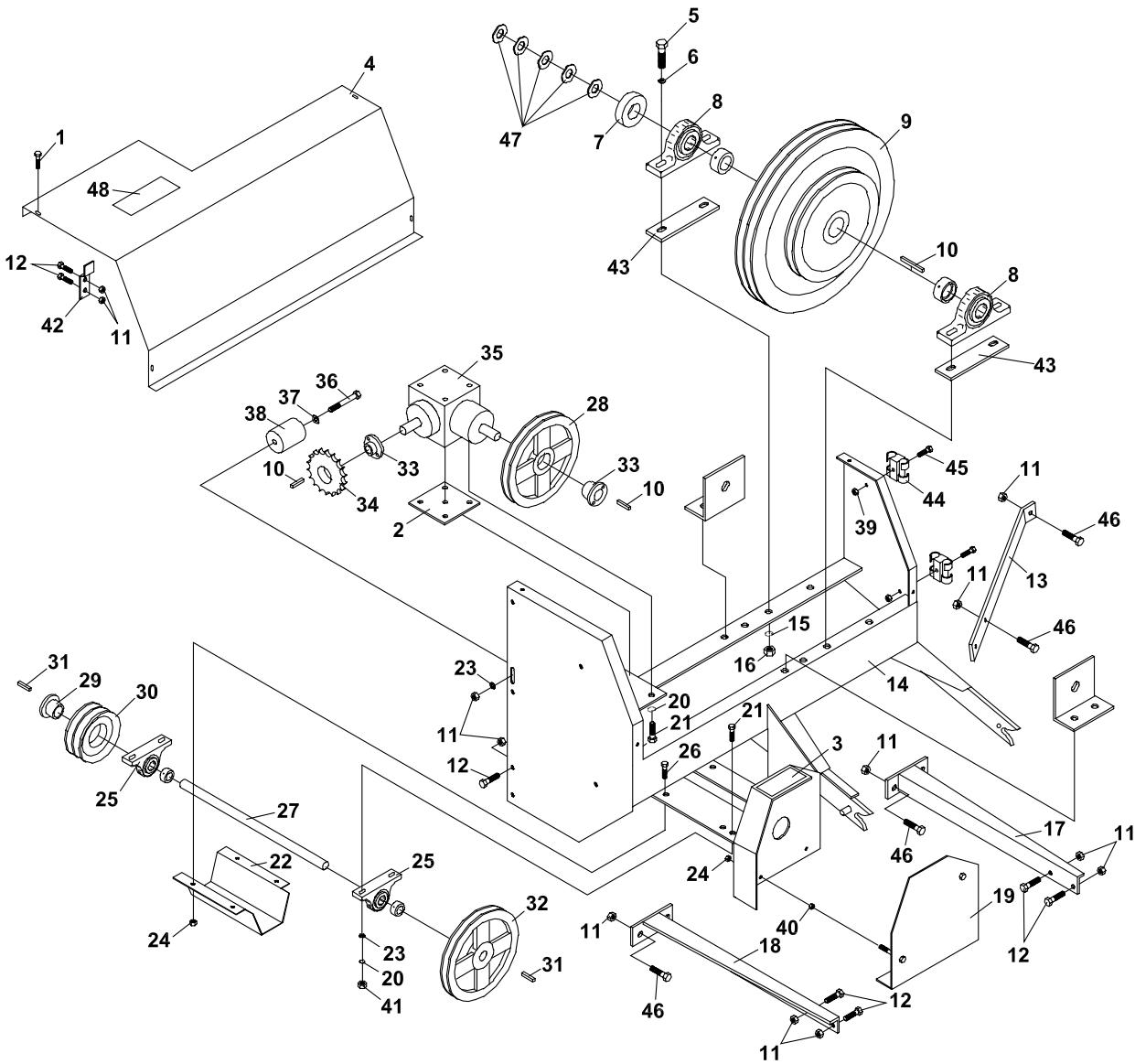
SNOWBLOWER

CHUTE CONTROLS

FIGURE 3

ITEM	PART NO.	DESCRIPTION	QTY	ITEM	PART NO.	DESCRIPTION	QTY
3-1	23-040	CYLINDER	1				
	21-0A003016	CYLINDER SEAL KIT	1				
3-2	25-2103-6-6	FITTING	2				
3-3	20-010	HOSE-1/4 X 65	1				
3-4	20-048	HOSE-1/4 X 68	1				
3-5	25-0103-4-6	FITTING	2				
3-6	23-004	QUICK COUPLER-MALE	2				
3-7	64025-05	NUT-3/8-16 HEX	2				
3-8	99-K18	EYEBOLT	1				
3-9	45-035	CABLE	2				
3-10	64139-21	BLT-WLF 3/8-16X3/4	7				
3-11	64141-4	NUT-WLF 3/8-16	7				
3-12	64-276.17	CHUTE CONTROL PIPE	1				
3-13	64-277.17	PIPE GUIDE	1				
3-14	62-550	AUGER HOUSING	1				
3-15	64-275	CYLINDER ANCHOR	1				
3-16	02-CP0610	COTTER PIN-3/16 X 1-1/4	2				
3-17	64229-03	LOCKNUT-NYLON 3/8-16	1				
3-18	64163-61	WSHR .81X.406X16GA	1				

FIGURE 4



SNOWBLOWER

MAIN FRAME

FIGURE 4

ITEM	PART NO.	DESCRIPTION	QTY	ITEM	PART NO.	DESCRIPTION	QTY
4-1	64197-001	BLT-TDFM 5/16-18X3/4	4	4-33	83-H16	BUSHING-1"	2
4-2	60-635	GEARBOX SPACER	1	4-34	83-H50H18	SPROCKET	1
4-3	00-025	DECAL-WARNING HANDS	1	4-35	87-125	GEARBOX	1
4-4	60-459.17	SHIELD-BELT	1	4-36	64123-79	BLT-HEX 3/8-16X3-1/4	1
4-5	90-0718	BOLT-7/16 X 2	4	4-37	99-B16	WASHER-FENDER 3/8X1-1/2	1
4-6	64163-43	WSHR.443/.454X1X11GA	4	4-38	44-080	TIGHTENER BLOCK	1
4-7	85-SC20	SET COLLAR-1-1/4"	1	4-39	64025-29	NUT-HEX #8-32 KEPS	2
4-8	55-PB22020S	BEARING-1-1/4"	2	*	4116761	LABEL-MADE IN USA	1
4-9	83-025	PULLEY-SPECIAL	1	4-40	64229-02	LOCKNUT-NYLON 5/16-18	2
4-10	64164-10	1/4X1/4X1-1/4 MACH KEY	3	4-41	64025-05	NUT-3/8-16 HEX	4
4-11	64141-4	NUT-WLF 3/8-16	14	4-42	64-488	SUPPORT-BELT SHIELD	1
4-12	64139-21	BLT-WLF 3/8-16X3/4	12	4-43	64163-67	WASHER-.516X1X12GA	8
4-13	64-279.17	BRACE-RT	1		(SN 1001 - 1276)		
4-14	62-551.17	MAIN FRAME	1		4137519.7	FAN BEARING SPACER	2
4-15	64006-06	LOCKWASHER-HEL 7/16	4		(SN 1277 -)		
4-16	92-07	NUT-7/16	4				
4-17	64-338.17	BRACE-BOTTOM RIGHT	1	4-44	4134161	HOSE CLAMP	2
4-18	64-337.17	BRACE-BOTTOM LEFT	1	4-45	01-014	SCREW-MACHINE 8-32 X 1	2
4-19	60-460.17	SHIELD-DRIVE PULLEY	1	4-46	64139-24	BLT-WLF 3/8-16 X 1	4
4-20	64006-03	LOCKWASHER-3/8	8	4-47	99-B24	WASHER-1-1/4 10 GA	5
4-21	64123-16	BLT-HEX 3/8-16X1-1/4	8	4-48	00-093	DECAL-OWNER'S MANUAL	1
4-22	60-461	SHIELD-DRIVE SHAFT	1				
4-23	64163-61	WSHR .81X.406X16GA	5				
4-24	64141-6	NUT, 5/16-18	6				
4-25	55-PB22012	BEARING-3/4"	2				
4-26	64139-08	BOLT-5/16-18X3/4 WLF	4				
4-27	80-191	DRIVE SHAFT	1				
4-28	83-BK85H	PULLEY	1				
	(SN 1001 - 1713)						
	83-BK95H	PULLEY	1				
	(SN 1714 -)						
4-29	83-H12	BUSHING	1				
4-30	83-2BK36H	PULLEY	1				
	(SN 1001 - 1713)						
	83-2BK45H	PULLEY	1				
	(SN 1714 -)						
4-31	64164-11	KEY-3/16X3/16X1-1/4 SQ	2				
4-32	82-074	PULLEY	1				
	(SN 1001 - 1713)						
	82-080	PULLEY	1				
	(SN 1714 -)						

* NOT ILLUSTRATED

FIGURE 5

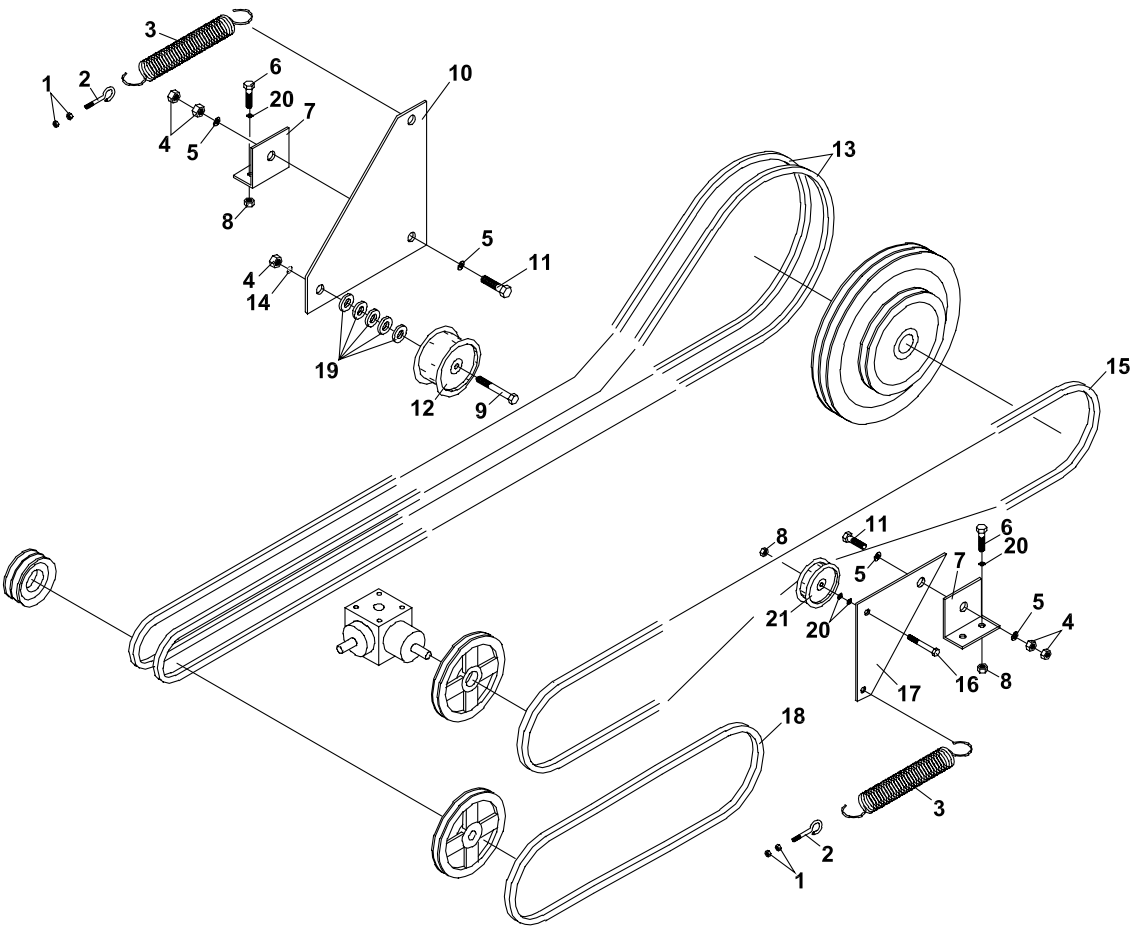
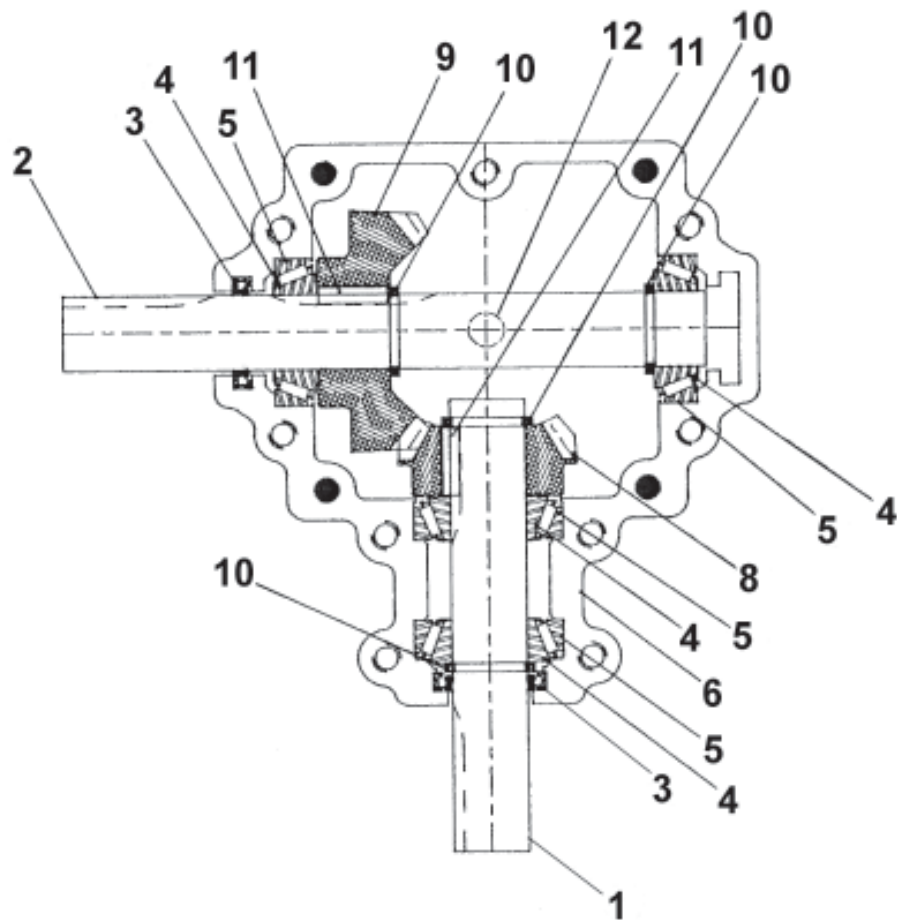


FIGURE 5

ITEM	PART NO.	DESCRIPTION	QTY	ITEM	PART NO.	DESCRIPTION	QTY
5-1	64141-2	NUT-WLF 1/4-20	4				
5-2	99-K25	EYEBOLT-1/4 X 2	2				
5-3	41-043	SPRING	2				
5-4	64025-09	HEX, NUT 1/2-13	5				
5-5	64163-67	WASHER-.516X1X12GA	4				
5-6	64139-21	BLT-WLF 3/8-16X3/4	4				
5-7	40-169	IDLER BRACKET	2				
5-8	64141-4	NUT-WLF 3/8-16	5				
5-9	64123-72	BLT-HEX 1/2-13X2-1/2	1				
5-10	40-207	IDLER ARM-BLOWER	1				
5-11	90-0814	BOLT-1/2 X 1-3/4	2				
5-12	83-018	FLAT IDLER-DOUBLE	1				
5-13	81-BX62	BELT-BX62 MATCHED	2				
	(SN 1001 - 1713)						
	81-BX63	BELT-BX63 MATCHED	2				
	(SN 1714 -)						
5-14	64006-05	LOCKWSHR-HELICAL 1/2	1				
5-15	81-BX62	BELT-BX62	1				
	(SN 1001 - 1713)						
	81-BX63	BELT-BX63	1				
	(SN 1714 -)		1				
5-16	64123-70	BOLT-HEX 3/8-16X1-1/2	1				
5-17	40-206	IDLER ARM-AUGER	1				
5-18	81-A053	DRIVE BELT-420	1				
	(SN 1001 - 1713)						
	81-A051	DRIVE BELT-420	1				
	(SN 1714 -)						
NOTE: SEE STEINER DRIVE BELT CHART FOR STEINER TRACTORS AND ATTACHMENTS FOR CORRECT BELT SIZES ON OTHER POWER UNITS.							
5-19	99-B12	SPACER-1/4" THICK	5				
5-20	64163-61	WSHR .81X.406X16GA	6				
5-21	83-013	FLAT IDLER-4-1/8"	1				

FIGURE 6



SNOWBLOWER

GEARBOX PARTS

FIGURE 6

ITEM	PART NO.	DESCRIPTION	QTY	ITEM	PART NO.	DESCRIPTION	QTY
6-1	87-200100-01	PINION SHAFT	1				
6-2	87-200111-101	SHAFT-CROSS	1				
6-3	87-209843	SEALS	2				
6-4	87-244643	BEARING CONE	4				
6-5	87-244610	BEARING CUP	4				
6-6	87-210001-0	CASTING-TAPPED HOLES	1				
*	87-210002-0	CASTING-THRU HOLES	1				
6-8	87-251016	GEAR-16 TOOTH	1				
6-9	87-251024	GEAR-24 TOOTH	1				
6-10	04-011	RETAINING RING	4				
6-11	87-200200	KEY	2				
6-12	87-200300	PIPE PLUG-1/4 NPT	2				
*	87-20030V	VENT PLUG	1				
*	87-203815	BOLT-3/8-16 X 1-1/2 SHCS	9				
*	87-2003VB	BUSHING-PLAIN 1/4 NPT	1				

* NOT ILLUSTRATED

World Class Quality, Performance And Support



Equipment from Jacobsen, a Textron company, is built to exacting standards ensured by ISO 9001 and ISO 14001 registration at all our manufacturing locations.

A worldwide dealer network and factory-trained technicians backed by Textron Parts Xpress provide reliable, high-quality product support.



BOB-CAT BROUWER BUNTON CUSHMAN RYAN STEINER