

MAN 4158522
Rev. A 3-2007



MODEL:
75-70895 STUMP CUTTER SC101



OP/PARTS MANUAL

CALIFORNIA

Proposition 65 Warning

Diesel engine exhaust and some of its constituents are known to the State of California to cause cancer, birth defects and other reproductive harm.

⚠ WARNING

The engine exhaust from this product contains chemicals known to the State of California to cause cancer, birth defects or other reproductive harm.

Californie Proposition 65 Avertissement

Les échappements des moteurs diesel et certains de leurs composés sont reconnus par l'Etat de Californie pour être cancérigènes, provoquer des défauts congénitaux et d'autres dangers en matière de reproduction.

⚠ AVERTISSEMENT

L'émission du moteur de ce matériel contient des produits chimiques que l'Etat de Californie considère être cancérigènes, provoquer des défauts congénitaux et d'autres dangers en matière de reproduction.

California Advertencia de la Proposicion 65

El estado de California hace saber que los gases de escape de los motores diesel y algunos de sus componentes producen cáncer, defectos de nacimiento y otros daños en el proceso de reproducción humana.

⚠ ADVERTENCIA

El estado de California hace saber que los gases de escape de este producto contienen productos químicos que producen cáncer, defectos de nacimiento y otros daños en el proceso de reproducción humana.

CALIFORNIA

Proposition 65 Warning

Battery posts, terminals, wiring insulation, and related accessories contain lead and lead compounds, chemicals known to the State of California to cause cancer and birth defects or other reproductive harm.
WASH HANDS AFTER HANDLING.

STUMP CUTTER

IMPORTANT MESSAGE

Thank you for purchasing this Schiller Grounds Care, Inc. product. You have purchased a world class product, one of the best designed and built anywhere.

This product comes with an Owner/Operator's Manual. The useful life and good service you receive from this product depends to a large extent on how well you read and understand this manual. Treat this product properly and adjust it as instructed, and it will give you many years of reliable service.

See a Schiller Grounds Care, Inc. dealer for any service or parts needed. Schiller Grounds Care, Inc. service ensures that you continue to receive the best results possible from Schiller Grounds Care, Inc. products. You can trust Schiller Grounds Care, Inc. replacement parts because they are manufactured with the same high precision and quality as the original parts.

Schiller Grounds Care, Inc. designs and builds its equipment to serve many years in a safe and productive manner. For longest life, use this product only as directed in the manual, keep it in good repair and follow safety warnings and instructions. You'll always be glad you did.

Schiller Grounds Care, Inc.
One Bob Cat Lane
Johnson Creek, WI 53038-0469

TABLE OF CONTENTS	FIGURES	PAGE
INTRODUCTION / SPECIFICATIONS		2
SAFETY.....		3, 4
OPERATION.....		5
SERVICE.....		6, 7
FRAME PARTS	FIGURE 1	8, 9
DRIVE PARTS	FIGURE 2	10, 11
GEARBOX PARTS	FIGURE 3	12
BELT CHART.....	FIGURE 4	13

DESCRIPTION

The Steiner Stump Cutter is designed to perform with the Steiner 4-wheel drive articulated frame steering tractors. The cutter mounts on the quick hitch front lift in the conventional manner. Driven by a PTO belt, a right angle gearbox provides a 2 to 1 reduction providing power to the cutterhead. The depth of cut is regulated by the front lift. Movement from left to right is accomplished by the articulated steering. It will remove stumps and/or roots to approximately 5 inches below ground level.

Hardened cutters are strategically located on the cutterhead to allow cutterhead movement into the stump from either side or from the top. The stump cutter is useful for removing stumps from areas where large tree removal equipment cannot gain access or would leave unsightly holes. It is also useful to “prune” above ground roots that damage mowing equipment.



SPECIFICATIONS

Weight	250 lbs.
Overall Width	34-1/2"
Overall Height.....	18"
Overall Length	37"
Cutterhead.....	24 Hardened Cutters
Cutterhead Diameter	16"
Cutterhead Width.....	3-1/4"
Cutterhead Speed	1600 RPM
Cutting depth below ground level	5"
Maximum recommended cutting height above ground level	5"

NOTICE !!!

Unauthorized modifications may present **extreme** safety hazards to operators and bystanders and could also result in product damage.

Schiller Grounds Care, Inc. strongly warns against, rejects and disclaims any modifications, add-on accessories or product alterations that are not designed, developed, tested and approved by Schiller Grounds Care, Inc. Engineering Department. Any Schiller Grounds Care, Inc. product that is altered, modified or changed in any manner not specifically authorized after original manufacture—including the addition of “after-market” accessories or component parts not specifically approved by Schiller Grounds Care, Inc.—will result in the Schiller Grounds Care, Inc. Warranty being voided.

Any and all liability for personal injury and/or property damage caused by any unauthorized modifications, add-on accessories or products not approved by Schiller Grounds Care, Inc. will be considered the responsibility of the individual(s) or company designing and/or making such changes. Schiller Grounds Care, Inc. will vigorously pursue full indemnification and costs from any party responsible for such unauthorized post-manufacture modifications and/or accessories should personal injury and/or property damage result.



This symbol means:

ATTENTION!
BECOME ALERT!

Your safety and the safety of others is involved.

Signal word definitions:

The signal words below are used to identify levels of hazard seriousness. These words appear in this manual and on the safety labels attached to Schiller Grounds Care, Inc. machines. For your safety and the safety of others, read and follow the information given with these signal words and/or the symbol shown above.

DANGER

DANGER indicates an imminently hazardous situation which, if not avoided, **WILL** result in death or serious injury.

WARNING

WARNING indicates a potentially hazardous situation which, if not avoided, **COULD** result in death or serious injury.

CAUTION

CAUTION indicates a potentially hazardous situation which, if not avoided, **MAY** result in minor or moderate injury. It may also be used to alert against unsafe practices or property damage.

CAUTION

CAUTION used without the safety alert symbol indicates a potentially hazardous situation which, if not avoided, **MAY** result in property damage



Model Serial Number

SCHILLER GROUNDS CARE, INC.
One Bob – Cat Lane
Johnson Creek, WI 53038

MODEL NUMBER: This number appears on sales literature, technical manuals and price lists.

SERIAL NUMBER: This number appears only on your mower. It contains the model number followed consecutively by the serial number. Use this number when ordering parts or seeking warranty information.

GENERAL SAFETY

1. Read and understand the Owner's Manual before attempting to operate this machine.
2. Operate all controls from the operator's seat. **NO RIDERS.**
3. Keep all shields in place and safety switches adjusted properly.
4. Do not leave equipment unattended. STOP the engine and remove the key.
5. Do not allow minors or the inexperienced to operate this machine.
6. Keep people and pets a safe distance away from machine using power driven attachments. Injury could result from flying debris.

OPERATING SAFETY

1. **STOP ENGINE** to install drive belt.
2. **DO NOT** attempt to work on unit or any attachments with the engine running. **STOP ENGINE!**
3. Before leaving operator's seat:
 - Disengage PTO.
 - Set **PARKING brake**
 - Stop engine.

CAUTION

ALWAYS WEAR SAFETY GLASSES WHEN OPERATING STUMP CUTTER.

DANGER

DO NOT OPERATE WITH PERSONS IN THE AREA. HIGHT SPEED CUTTER MAY PROPEL OBJECTS CAUSING POSSIBLE INJURY OR DEATH.

OPERATING INSTRUCTIONS

- Attach stump cutter to quick hitch front lift, placing drive belt around the left hitch arm.
- Stop engine and install drive belt.
- Remove clip pin from the support stand. Rotate the stand to the highest setting and insert clip pin. This stand is used to dismount the cutter and position it at the correct height to simplify attaching the next time.
- Start engine and transport cutter to stump to be removed.
- Before attempting to remove a stump, it should be cut as close to the ground level as possible with a chain saw.
- Position the cutterhead centered above the stump at the edge nearest the tractor.
- Set Parking Brake. Engage the PTO slowly and increase engine speed. Full throttle is recommended for large, hardwood stumps.
- Lower the cutterhead with the front lift lever until it just contacts the stump, then swing the cutterhead from full left to full right by turning the steering wheel.
- Lower the cutterhead, while in the full right position, from 1 to 2 inches (depending on the hardness of the wood) and swing left again. Lower the cutterhead, while in the full left position, and swing right again. Repeat this sequence until the desired depth is reached.
- Raise cutterhead, Release Parking Brake, move forward 2 to 3 inches, and repeat the cutting sequence.

CAUTION

WEAR SAFETY GLASSES WHEN OPERATING STUMP CUTTER.

WARNING

SET UP TEMPORARY PLYWOOD SHIELDING IN HIGH TRAFFIC OR PEDESTRIAN AREAS TO SHIELD FLYING DEBRIS. OBJECTS CAN BE PROPELLED FROM CUTTER CAUSING POSSIBLE INJURY TO BYSTANDERS.

CAUTION

BE ALERT! STOP CUTTING IMMEDIATELY IF CUTTERHEAD STRIKES A ROCK OR OTHER SOLID OBJECT. DAMAGE TO CUTTERHEAD OR CUTTERS MAY OCCUR. DO NOT OPERATE WITH CUTTERS OR CUTTER HOLDERS MISSING. THIS CAUSES AN UNBALANCED CONDITION AND MAY CAUSE DAMAGE TO THE CUTTER.

SERVICE SCHEDULE

Daily:

- Check for any signs of loose bolts and tighten as needed.
- Check cutterhead cutters for dull, bent, missing, or broken cutters. Sharpen or replace as needed.

25 hour:

- In addition to daily service, lubricate the two cutterhead bearings.
- Check gearbox oil level. Oil level is 4 inches down from top of filler tube. Use #90 gear oil.

100 hour:

- Change gearbox oil at 100 hours or four (4) weeks initially, and every 2500 hours or six (6) months of operation thereafter. Use #90 gear oil.



MAINTENANCE

Cutterhead:

- Tighten cutterhead capscrews to 140 foot pounds after the first 30 minutes of running time.

Replacing cutters:

1. Note there are 10 left cutters, 10 right cutters and 4 straight cutters. It is important to insert the cutters in the same holder as it was originally at the proper depth to assure even, uniform cutting. Proper depth is 1-1/16 inches, measured from the holder to the tip of the cutter.
2. Loosen socket head capscrews to slide the cutters out.
3. Replace the new or sharpened cutter in the same position where it was originally. Insert cutter to the proper depth.
4. Tighten socket head cap screws to 140 foot pounds. Tighten again after the first 30 minutes of running time.

NOTE: No lubrication should be used on threads.

Triple drive belt replacement:

1. Loosen the cutterhead bearing mounting bolts to allow the bearings to slide in the frame slots and remove belt shield.
2. Loosen the 1/2" adjusting nuts at the front and slide cutterhead assembly to the rear until belts can be removed.
3. Install new belts.
4. See Belt Adjustment for belt tightening instructions.

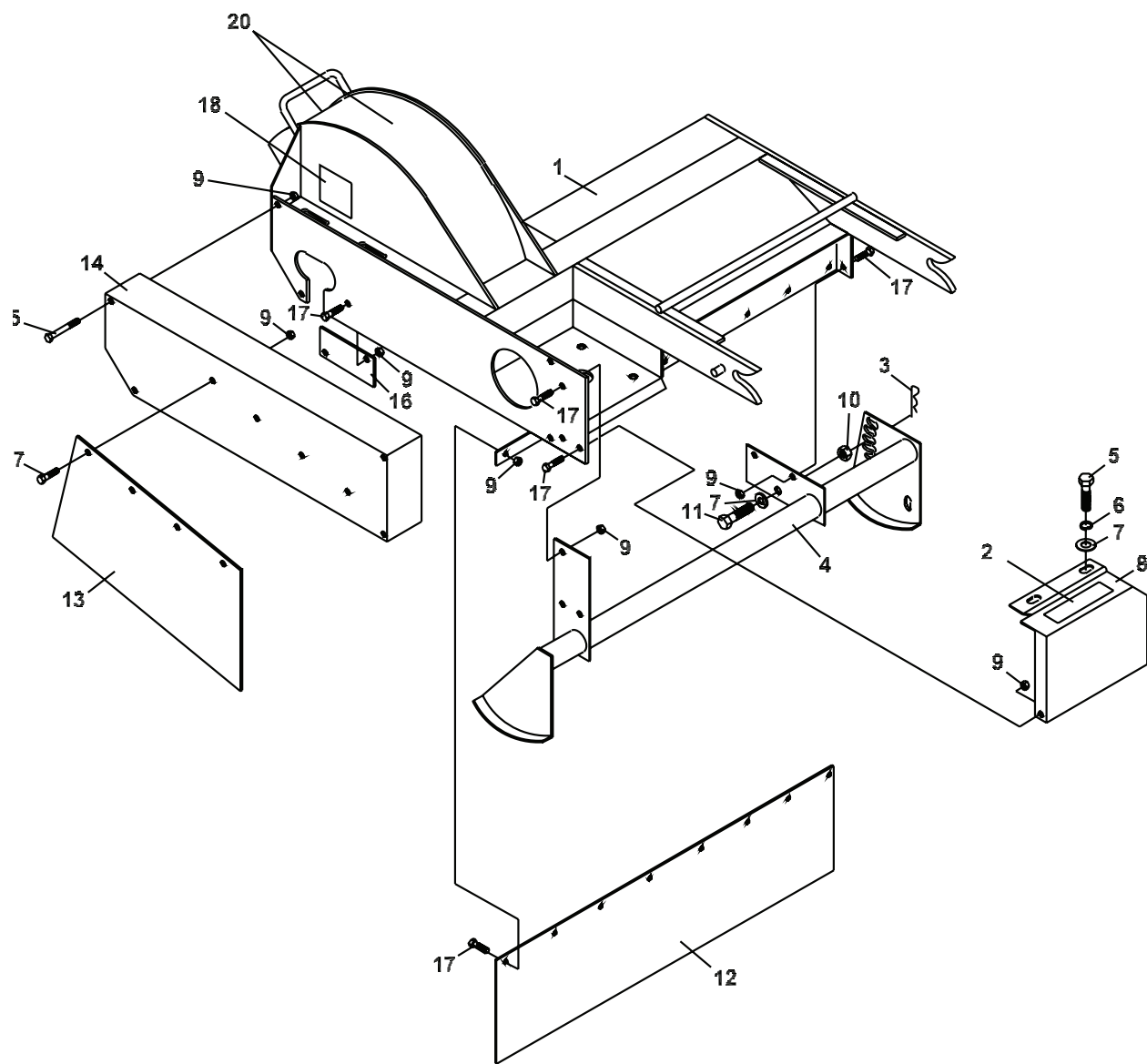
Belt Adjustment for triple drive belts:

1. With belt shield removed and cutterhead mounting bearings loosened, tighten the 1/2" adjusting nuts equally at the front until belt tension is correct.

NOTE: These are not matched belts. It is normal for the three belts to vary a little in tension.

2. Use a straight edge to align the pulleys. This will assure that the belts are running straight.
3. Re-tighten the bearing mounting bolts and replace belt shield.

FIGURE 1



STUMP CUTTER

FRAME PARTS

FIGURE 1

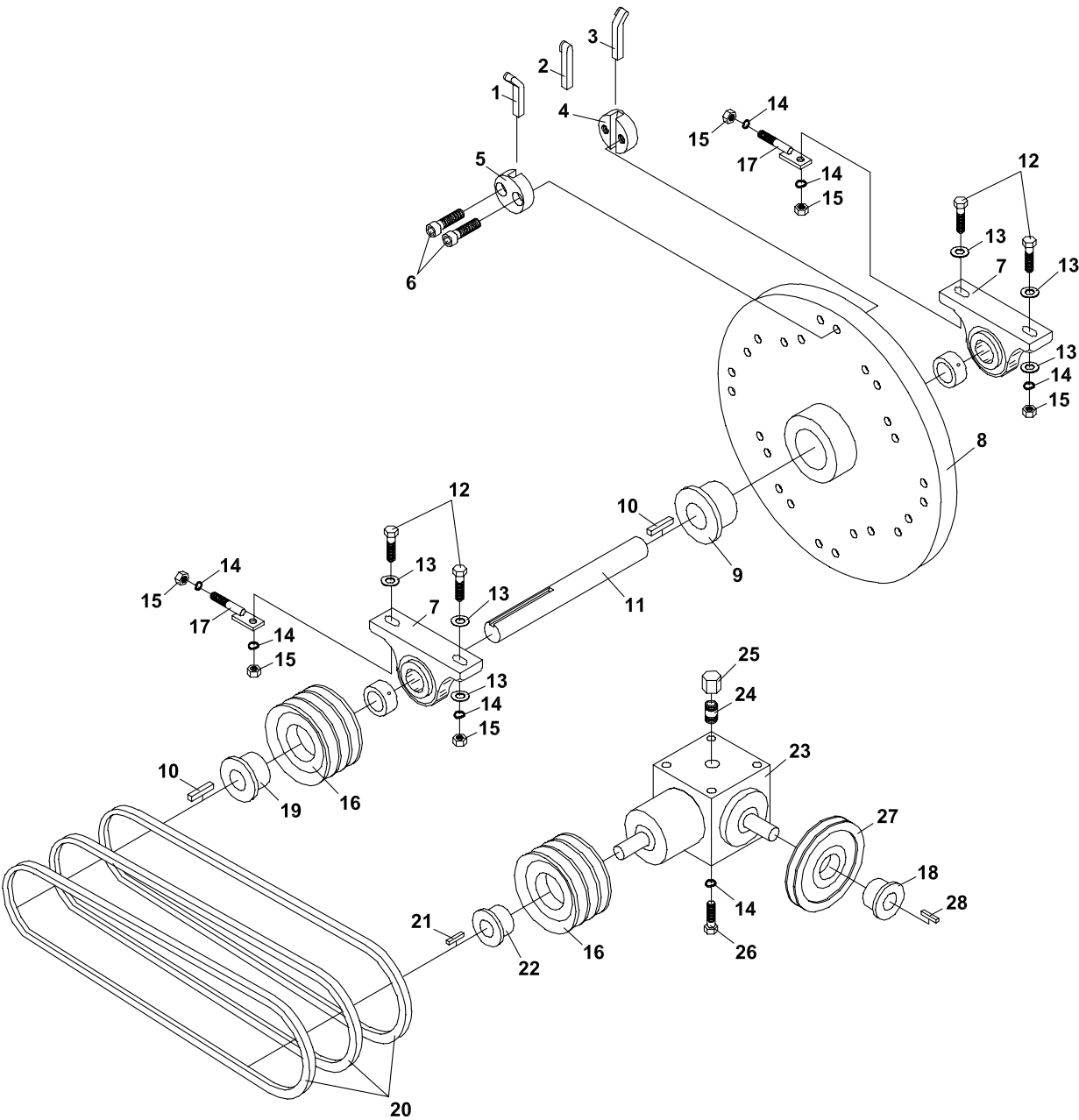
ITEM	PART NO.	DESCRIPTION	QTY	ITEM	PART NO.	DESCRIPTION	QTY
1-1	4163744	FRAME-MAIN	1				
1-2	00-025	DECAL-HANDS FROM BELT	1				
1-3	64168-1	COTTER-HAIRPIN	1				
1-4	62-626.7	LEG-SUPPORT	1				
1-5	90-0808	BOLT	2				
1-6	64006-05	LOCKWSHR-HELICAL 1/2	2				
1-7	64163-67	WASHER-.516X1X12GA	3				
1-8	4163748	SHIELD, SINGLE BELT	1				
1-9	64141-6	NUT, 5/16-18	23				
1-10	64141-13	NUT WLF 1/2-13	1				
1-11	99-F36	BOLT, LEG RETAINER	1				
1-12	44-097	BELTING-REAR	1				
1-13	44-098	BELTING-REAR	1				
1-14	62-625.17	SHIELD-BELT	1				
1-15	90-0530	BOLT,5/16-18 X 3-3/4	4				
1-16	64-497.7	PLATE	1				
1-17	64139-08	BOLT-5/16-18X3/4	19				
1-18	00-093	DECAL-WARNING OP MAN	1				
1-19 *	4158620	DECAL-STEINER DIECUT	1				
1-20	00-092	DECAL-DANGER HANDS	2				
1-21 *	4116761	DECAL-MADE IN USA	1				

* NOT ILLUSTRATED

DRIVE PARTS

STUMP
CUTTER

FIGURE 2



STUMP CUTTER

DRIVE PARTS

FIGURE 2

ITEM	PART NO.	DESCRIPTION	QTY	ITEM	PART NO.	DESCRIPTION	QTY
2-1	79-055	CUTTER-RIGHT (AS VIEWED FROM FRONT)	10	NOTE: THE 87-141 GEARBOX IS NO LONGER AVAILABLE AS A SERVICE PART. IT IS RE- PLACED BY KIT # 70-098 CONSISTING OF:			
2-2	79-056	CUTTER-STRAIGHT	4				
2-3	79-054	CUTTER-LEFT (AS VIEWED FROM FRONT)	10				
2-4	79-057	HOLDER-THREADED	12				
2-5	79-058	HOLDER-COUNTERSUNK	12	*	D3032	BUSHING	1
2-6	99-20	BOLT, 5/8-18 X 1-3/4	24	*	87-175	GEARBOX	1
2-7	55-PB22023	BEARING-PILLOW BLOCK	2	*	83-BK60H	PULLEY	1
2-8	4136416.7	STUMP CUTTER ROTOR	1	*	64164-11	KEY-3/16X3/16X1-1/4 SQ	1
2-9	83-SF23	BUSHING, SF X 1-7/16	1				
2-10	64164-26	KEY-3/8x3/8x1-1/2 SQ	2				
2-11	80-226	SHAFT-CUTTER	1				
2-12	64123-24	BLT-HEX 1/2-13X2	4				
2-13	64163-67	WASHER-.516X1X12GA	6				
2-14	64006-05	LOCKWSHR-HELICAL 1/2	10				
2-15	64025-09	HEX, NUT 1/2-13	6				
2-16	83-3B46SD	PULLEY-3 GROOVE	2				
2-17	42-398	TIGHTENER-BELT IDLER	2				
2-18	D3032	BUSHING	1				
2-19	83-SD23	BUSHING	1				
2-20	81-B045	BELT-B45	3				
2-21	64164-10	1/4X1/4X1-1/4 MACH KEY	1				
2-22	83-SD20	BUSHING	1				
2-23	87-175	GEARBOX	1				
2-24	29-079	PIPE NIPPLE, 1/2 X 1.1/2	1				
2-25	24-033	CAP-VENTED	1				
2-26	90-0808	BOLT	4				
2-27	83-BK60H	PULLEY	1				
		*DRIVE BELT NOT SHOWN SEE BELT CHART PAGE					
2-28	64164-11	KEY-3/16X3/16X1-1/4 SQ	1				

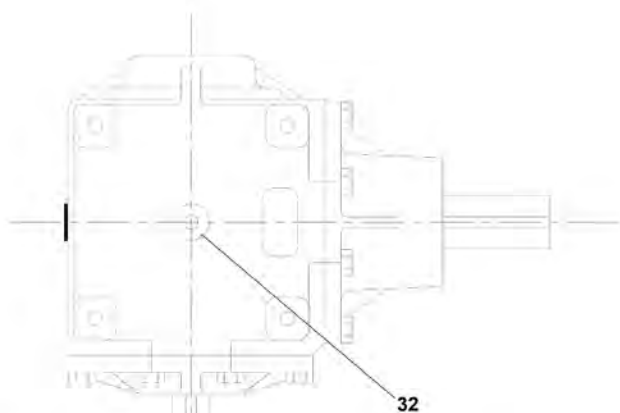
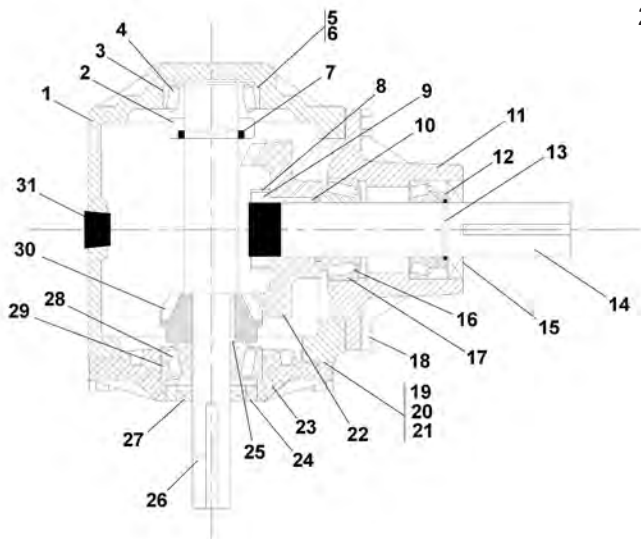
* NOT ILLUSTRATED

GEARBOX PARTS

STUMP CUTTER

FIGURE 3

ITEM	PART NO.	DESCRIPTION	QTY	ITEM	PART NO.	DESCRIPTION	QTY
3-1	87-CM000182	HOUSING	1	3-17	87-CM150011	BEARING CUP	1
3-2	87-CM450064	COLLAR	1	3-18	87-CM410163	SEMS CAP SCREW	16
3-3	87-CM150144	BEARING CUP	2	3-19	87-CM390021	GASKET (.015)	1
3-4	87-CM150136	BEARING CONE	1	3-20	87-CM390039	GASKET (.005)	1
3-5	87-CM370023	SHIM (.010)	A/R	3-21	87-CM390195	GASKET (.003)	1
3-6	87-CM370015	SHIM (.005)	A/R	3-22	87-CM101030	GEAR	1
3-7	87-CM620062	RETAINING RING	1	3-23	87-CM055327	THRU CAP	1
3-8	87-CM410233	LOCKWASHER	1	3-24	87-CM452326	COLLAR	1
3-9	87-CM410255	LOCKNUT	1	3-25	87-CM600171	KEY	1
3-10	87-CM600031	KEY	1	3-26	87-CM222810	THRU SHAFT	1
3-11	87-CM050237	HUB	1	3-27	87-CM301473	SEAL	1
3-12	87-CM450585	COLLAR	1	3-28	87-CM150557	BEARING CONE	1
3-13	87-CM620088	RETAINING RING	1	3-29	87-CM150540	BEARING CUP	1
3-14	87-CM200287	SHAFT	1	3-30	87-CM101048	PINION	1
3-15	87-CM300251	SEAL	1	3-31	87-CM410027	PIPE PLUG (SOLID)	2
3-16	87-CM150151	BEARING CONE	1	3-32	29-079	PIPE NIPPLE, 1/2 X 1.1/2	1
					24-033	CAP W/BREATHER	1



GEARBOX PARTS
(SN 1284 -)

SCHILLER GROUNDS CARE, INC.
ONE BOB-CAT LANE
P.O. BOX 469
JOHNSON CREEK, WI 53038
920-699-2000
www.schillergc.com



©Schiller Grounds Care, Inc. 2010