

MAN 4163286
Rev. A 04-2011



SCHILLER

GROUNDS
CARE

MODEL:
75-70642A
POWER BLOWER PB100

OP / PARTS MANUAL

CALIFORNIA

Proposition 65 Warning

Diesel engine exhaust and some of its constituents are known to the State of California to cause cancer, birth defects and other reproductive harm.

⚠ WARNING

The engine exhaust from this product contains chemicals known to the State of California to cause cancer, birth defects or other reproductive harm.

Californie Proposition 65 Avertissement

Les échappements des moteurs diesel et certains de leurs composés sont reconnus par l'Etat de Californie pour être cancérigènes, provoquer des défauts congénitaux et d'autres dangers en matière de reproduction.

⚠ AVERTISSEMENT

L'émission du moteur de ce matériel contient des produits chimiques que l'Etat de Californie considère être cancérigènes, provoquer des défauts congénitaux et d'autres dangers en matière de reproduction.

California Advertencia de la Proposicion 65

El estado de California hace saber que los gases de escape de los motores diesel y algunos de sus componentes producen cáncer, defectos de nacimiento y otros daños en el proceso de reproducción humana.

⚠ ADVERTENCIA

El estado de California hace saber que los gases de escape de este producto contienen productos químicos que producen cáncer, defectos de nacimiento y otros daños en el proceso de reproducción humana.

CALIFORNIA

Proposition 65 Warning

Battery posts, terminals, wiring insulation, and related accessories contain lead and lead compounds, chemicals known to the State of California to cause cancer and birth defects or other reproductive harm.
WASH HANDS AFTER HANDLING.

POWER BLOWER

IMPORTANT MESSAGE

Thank you for purchasing this Schiller Grounds Care, Inc. product. You have purchased a world class product, one of the best designed and built anywhere.

This product comes with an Owner/Operator's Manual. The useful life and good service you receive from this product depends to a large extent on how well you read and understand this manual. Treat this product properly and adjust it as instructed, and it will give you many years of reliable service.

See a Schiller Grounds Care, Inc. dealer for any service or parts needed. Schiller Grounds Care, Inc. service ensures that you continue to receive the best results possible from Schiller Grounds Care, Inc. products. You can trust Schiller Grounds Care, Inc. replacement parts because they are manufactured with the same high precision and quality as the original parts.

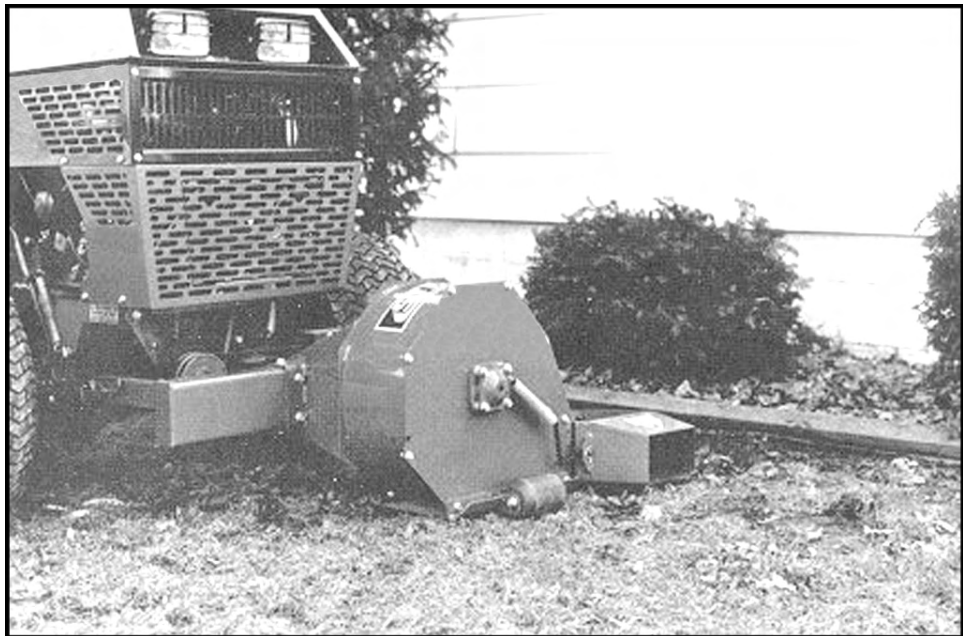
Schiller Grounds Care, Inc. designs and builds its equipment to serve many years in a safe and productive manner. For longest life, use this product only as directed in the manual, keep it in good repair and follow safety warnings and instructions. You'll always be glad you did.

Schiller Grounds Care, Inc.
One Bob Cat Lane
Johnson Creek, WI 53038-0469

| TABLE OF CONTENTS | FIGURES | PAGE |
|------------------------------------|----------------|-------------|
| DESCRIPTION / SPECIFICATIONS | | 4 |
| SAFETY..... | | 5, 6 |
| OPERATION..... | | 7 |
| ASSEMBLY | | 8 |
| PARTS SECTION..... | | 9 |
| POWER BLOWER PARTS..... | FIGURE 1 | 10, 11 |
| DISCHARGE CHUTE..... | FIGURE 2 | 12, 13 |

DESCRIPTION

Use the Power Blower to clear leaves and the most stubborn debris from lawns, parking lots, driveways or golfcart paths quickly and easily. The airflow is equal to a 150 MPH wind. It will also blow away water laying on paths and golf greens. The blower incorporates an 8 blade fan with speed governed by the power unit pto. The discharge chute may be flipped up or down to direct airflow.



SPECIFICATIONS

| | |
|---|----------------------------------|
| Weight | 95 lbs. |
| Overall width..... | 33" |
| Overall height | 18" |
| Overall length | 24" |
| Skid shoe..... | Fixed |
| Fan | 8 blade |
| Fan diameter | 14" |
| Fan width | 6" |
| Fan speed..... | 4300 rpm @ 3600 rpm engine speed |
| Ground clearance in raised position | 4-1/2" |

NOTICE !!!

Unauthorized modifications may present **extreme** safety hazards to operators and bystanders and could also result in product damage.

Schiller Grounds Care, Inc. strongly warns against, rejects and disclaims any modifications, add-on accessories or product alterations that are not designed, developed, tested and approved by Schiller Grounds Care, Inc. Engineering Department. Any Schiller Grounds Care, Inc. product that is altered, modified or changed in any manner not specifically authorized after original manufacture—including the addition of “after-market” accessories or component parts not specifically approved by Schiller Grounds Care, Inc.—will result in the Schiller Grounds Care, Inc. Warranty being voided.

Any and all liability for personal injury and/or property damage caused by any unauthorized modifications, add-on accessories or products not approved by Schiller Grounds Care, Inc. will be considered the responsibility of the individual(s) or company designing and/or making such changes. Schiller Grounds Care, Inc. will vigorously pursue full indemnification and costs from any party responsible for such unauthorized post-manufacture modifications and/or accessories should personal injury and/or property damage result.



This symbol means:
ATTENTION!
BECOME ALERT!

Your safety and the safety of others is involved.

Signal word definitions:

The signal words below are used to identify levels of hazard seriousness. These words appear in this manual and on the safety labels attached to Schiller Grounds Care, Inc. machines. For your safety and the safety of others, read and follow the information given with these signal words and/or the symbol shown above.

DANGER

DANGER indicates an imminently hazardous situation which, if not avoided, **WILL** result in death or serious injury.

WARNING

WARNING indicates a potentially hazardous situation which, if not avoided, **COULD** result in death or serious injury.

CAUTION

CAUTION indicates a potentially hazardous situation which, if not avoided, **MAY** result in minor or moderate injury. It may also be used to alert against unsafe practices or property damage.

CAUTION

CAUTION used without the safety alert symbol indicates a potentially hazardous situation which, if not avoided, **MAY** result in property damage

Schiller Grounds Care, Inc.

One Bobcat Lane
Johnson Creek, WI 53038 U.S.A.
Phone: 920-699-2000
Fax: 920-699-3683

MODEL NUMBER

SERIAL NUMBER

MODEL NUMBER: This number appears on sales literature, technical manuals and price lists.

SERIAL NUMBER: This number appears only on your mower. It contains the model number followed consecutively by the serial number. Use this number when ordering parts or seeking warranty information.

GENERAL SAFETY

1. Read and understand the Owner's Manual before attempting to operate this machine.
2. Operate all controls from the operator's seat. **NO RIDERS.**
3. Keep all shields in place and safety switches adjusted properly.
4. Do not leave equipment unattended. STOP the engine and remove the key.
5. Do not allow minors or the inexperienced to operate this machine.
6. Keep people and pets a safe distance away from machine using power driven attachments. Injury could result from flying debris.

OPERATING SAFETY

1. **STOP ENGINE** to install drive belt.
2. **DO NOT** attempt to work on unit or any attachments with the engine running.
STOP ENGINE!
3. Before leaving the tractor seat:
 - **Disengage PTO.**
 - **Set Parking brake.**
 - **Stop Engine.**

DANGER

DO NOT ATTEMPT TO CLEAN INLET OR OUTLET AREAS WITH BLOWER RUNNING.

DANGER

DO NOT OPERATE WITH PERSONS IN THE AREA. HIGH SPEED BLOWER MAY PROPEL OBJECTS CAUSING POSSIBLE INJURY OR DEATH.

1. Attach blower to quick hitch front lift, placing drive belt around the left hitch arm.
2. Stop engine and install drive belt.
3. Start engine and engage PTO drive slowly and gradually increase engine speed until desired blower speed is reached.
4. Operate blower as close to the ground as conditions permit. DO NOT USE "FLOAT" POSITION. There is an anti-scalp roller on the bottom of the blower housing.
5. Observe the wind direction and work with the wind whenever possible. The blower works equally well when traveling forward or reverse. When clearing large areas it is advisable to use forward and reverse patterns to blow all debris in the same direction.
6. Lower the discharge chute to direct the airflow forward. This is especially helpful when working close to buildings. It can be flipped up or down as needed to direct the airflow.

USE CAUTION WHEN TURF MAY BE SOFT. SCUFFING CAN OCCUR WHEN THE ANTI-SCALP ROLLER CONTACTS THE TURF SURFACE. DO NOT USE "FLOAT POSITION".

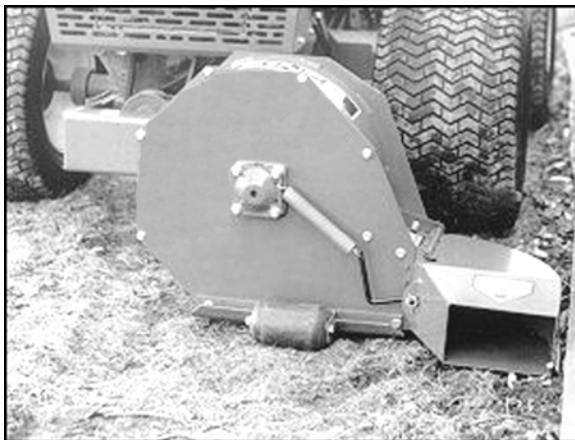


Photo 1
Discharge Chute Forward Airflow Position



Photo 2
Discharge Chute Left Airflow Position

ASSEMBLY INSTRUCTIONS

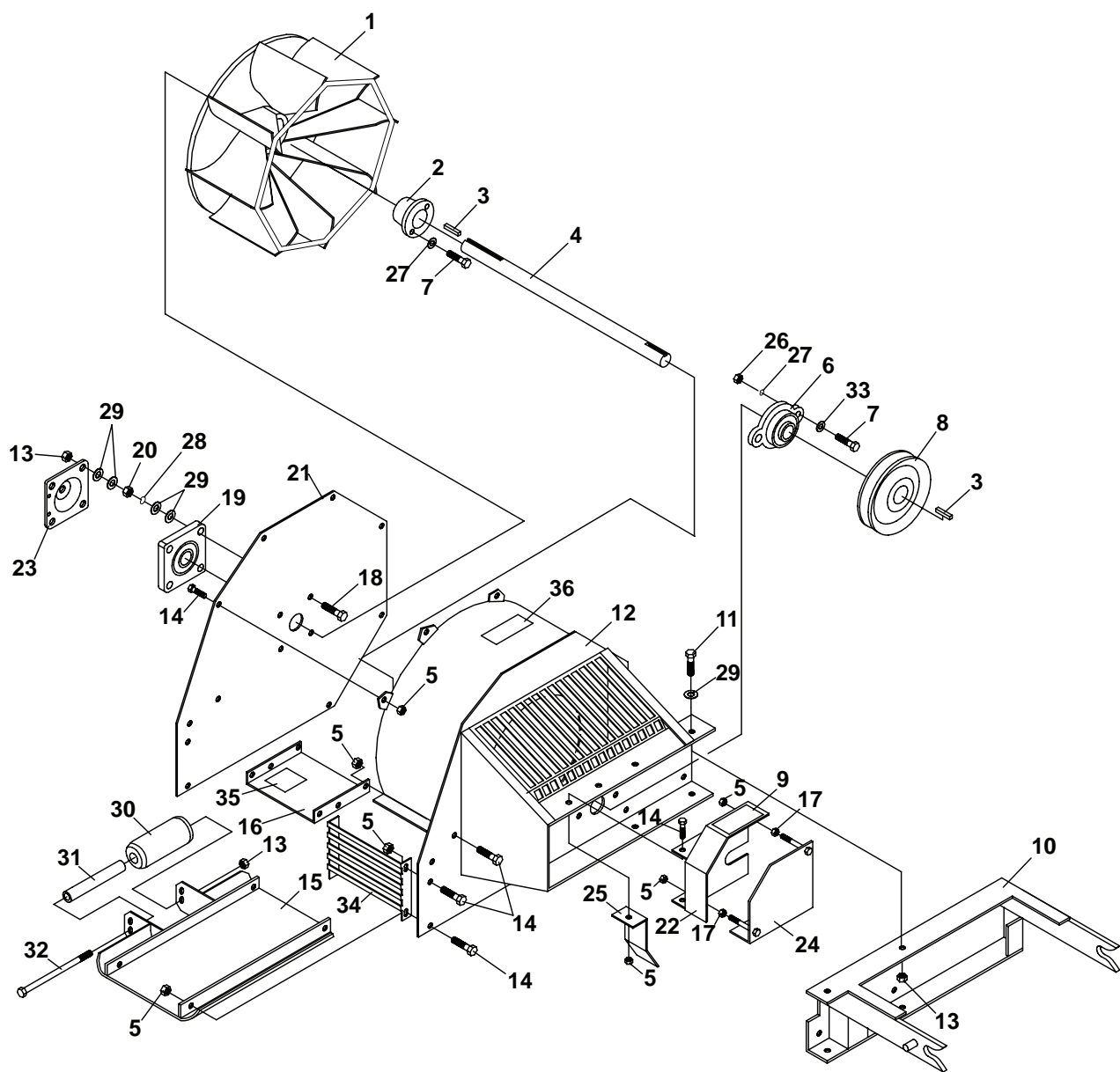
1. Remove parts from shipping crate.
2. Remove complete belt shield assembly (Ref. 22 & 24, Figure 1) from main frame.
3. Place the hitch frame inside the main blower housing channel aligning the six bolt holes to the frame.
(See Figure 1)
4. Fasten securely with six (6) 3/8 X 3/4 flange bolts.
5. Reinstall belt shield (Ref. 22) to the main frame.
6. Place correct drive belt on blower drive pulley. (Refer to Attachment Belt Size Chart). Replace the belt shield (Ref 24).
7. Remove the shaft, bolt and nut for the anti—scalp roller from the skid plate. Insert the shaft into the roller and reinstall in the lower hole on the skid plate.
8. Refer to Figure 2 and attach the discharge chute to the blower housing as shown.
9. Check all bolts and pulleys. Tighten as needed. Rotate the blower rotor and check for free rotation.

NOTE: This is a high speed balanced rotor and care must be taken to have clearance within the housing to avoid damage to rotor or premature failure of parts. If any interference is found contact your Schiller Grounds Care, Inc. dealer.

10. Attach the blower to the power unit (tractor). Engage the PTO slowly and gradually increase engine speed to full throttle to obtain maximum blower speed.

PARTS SECTION

FIGURE 1



POWER BLOWER

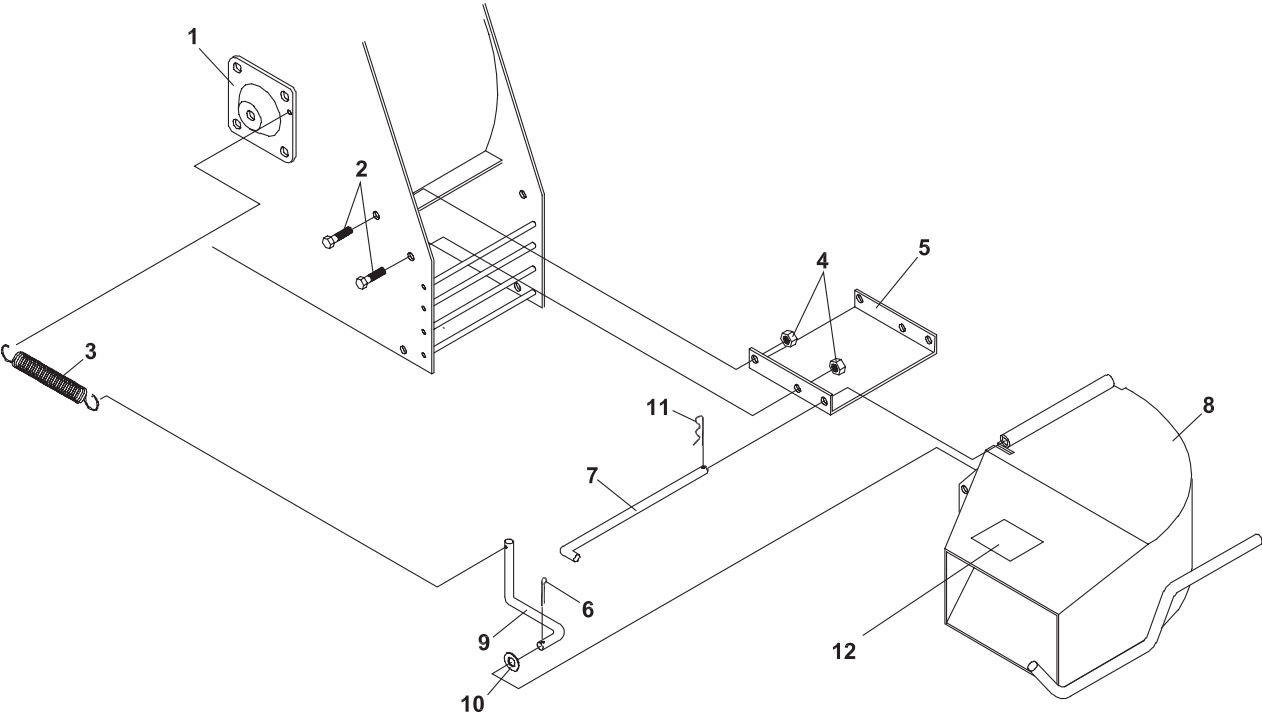
POWER BLOWER PARTS

FIGURE 1

| ITM | PART NO. | DESCRIPTION | QTY | ITM | PART NO. | DESCRIPTION | QTY |
|-----|------------|--------------------------|-----|-----|----------|--|-----|
| 1 | 4136430.7 | BLOWER ROTOR | 1 | * | 70-067 | KIT-ANTI-SCALP ROLLER (INCLUDES ITEMS 15 & 30 - 32) | 1 |
| 2 | 83-P116 | BUSHING | 1 | | | | |
| 3 | 64164-10 | 1/4X1/4X1-1/4 MACH KEY | 2 | * | 4116761 | DECAL-MADE IN THE USA | 1 |
| 4 | 80-128 | MAIN SHAFT | 1 | * | 81-A042 | DRIVE BELT-220 | 1 |
| 5 | 64141-6 | NUT, 5/16-18 | 21 | * | 81-A040 | DRIVE BELT (USED ON 220, 410 & 420 WITH ELECTRIC CLUTCH) | 1 |
| 6 | 55-FB16016 | BEARING-1" | 1 | | | | |
| 7 | 64123-47 | BLT-HEX 5/16-18X1-1/4 | 5 | | | | |
| 8 | 83-BK5016 | PULLEY | 1 | | | | |
| 9 | 00-025 | DECAL | 1 | | | | |
| 10 | 62-572.17 | HITCH FRAME | 1 | * | 81-B041 | DRIVE BELT-425 | 1 |
| 11 | 64139-21 | BLT-WLF 3/8-16X3/4 | 6 | * | 81-B040 | DRIVE BELT (USED ON 425 & 525 WITH ELECTRIC CLUTCH) | 1 |
| 12 | 62-783.17 | BLOWER-MAIN FRAME | 1 | | | | |
| 13 | 64141-4 | NUT-WLF 3/8-16 | 11 | | | | |
| 14 | 64139-08 | BOLT-5/16-18X3/4 WLF | 19 | | | | |
| 15 | 64-672.17 | SKID PLATE | 1 | | | | |
| 16 | 4165737 | S-HINGE PLATE | 1 | | | | |
| 17 | 64229-02 | LOCKNUT-NYLON 5/16-18 | 2 | | | | |
| 18 | 64123-87 | BOLT-HEX 3/8-16X1-3/4 | 4 | | | | |
| 19 | 55-FB22016 | BEARING | 1 | | | | |
| 20 | 64025-05 | NUT-3/8-16 HEX | 4 | | | | |
| 21 | 60-594.17 | BLOWER-FRONT PANEL | 1 | | | | |
| 22 | 4165738 | S-SHIELD-MOUNTING PLATE | 1 | | | | |
| 23 | 60-411.17 | SHIELD-FRONT BEARING | 1 | | | | |
| 24 | 64-426.17 | SHIELD-DRIVE PULLEY | 1 | | | | |
| 25 | 64-431.17 | SHIELD-SHAFT | 1 | | | | |
| 26 | 64025-02 | NUT-HEX 5/16-18 | 2 | | | | |
| 27 | 64006-02 | LOCKWASHER-HELICAL 5/16 | 5 | | | | |
| 28 | 64006-03 | WASHER, 3/8 HELICAL LOCK | 4 | | | | |
| 29 | 64163-61 | WSHR .81X.406X16GA | 22 | | | | |
| 30 | 44-119 | ROLLER-ANTI-SCALP | 1 | | | | |
| 31 | 80-240 | SHAFT-ANTI-SCALP ROLLER | 1 | | | | |
| 32 | 64123-219 | BOLT-HEX 3/8-16X6 | 1 | | | | |
| 33 | 64163-04 | 25/64X5/8X16GA WASHER | 2 | | | | |
| 34 | 60-593.17 | GUARD-AIR OUTLET | 1 | | | | |
| 35 | 00-093 | DECAL | 1 | | | | |
| 36 | 4158620 | LABEL-STEINER | 1 | | | | |

* NOT ILLUSTRATED

FIGURE 2



POWER BLOWER

DISCHARGE CHUTE

FIGURE 2

| ITM | PART NO. | DESCRIPTION | QTY | ITM | PART NO. | DESCRIPTION | QTY |
|-----|-----------|-------------------------|-----|-----|----------|-------------|-----|
| 1 | 60-411.17 | SHIELD-FRONT BEARING | 1 | | | | |
| 2 | 64139-08 | BOLT-5/16-18X3/4 WLF | 4 | | | | |
| 3 | 41-051 | SPRING | 1 | | | | |
| 4 | 64141-6 | NUT, 5/16-18 | 4 | | | | |
| 5 | 4165737 | S-HINGE PLATE-CHUTE | 1 | | | | |
| 6 | 02-CP0506 | COTTER PIN-5/32 X 3/4 | 1 | | | | |
| 7 | 42-396 | HNGE PIN | 1 | | | | |
| 8 | 4165736 | S-DISCHARGE CHUTE | 1 | | | | |
| 9 | 42-397 | SPRING LINK | 1 | | | | |
| 10 | 64163-61 | WSHR .81X.406X16GA | 1 | | | | |
| 11 | 02-PP0313 | PRESTO PIN-3/32 X 1-5/8 | 1 | | | | |
| 12 | 00-092 | DECAL-DNGR HANDS&FEET | 1 | | | | |

***NOT ILLUSTRATED**

SCHILLER GROUNDS CARE, INC.
ONE BOB-CAT LANE
P.O. BOX 469
JOHNSON CREEK, WI 53038
920-699-2000
www.schillergc.com



©Schiller Grounds Care, Inc. 2010