

## **INFORMATION BULLETIN**

**Date: 7-14-2008**

**Product Type: 430 with Generac Engine**

**Bulletin No: JC-016-08**

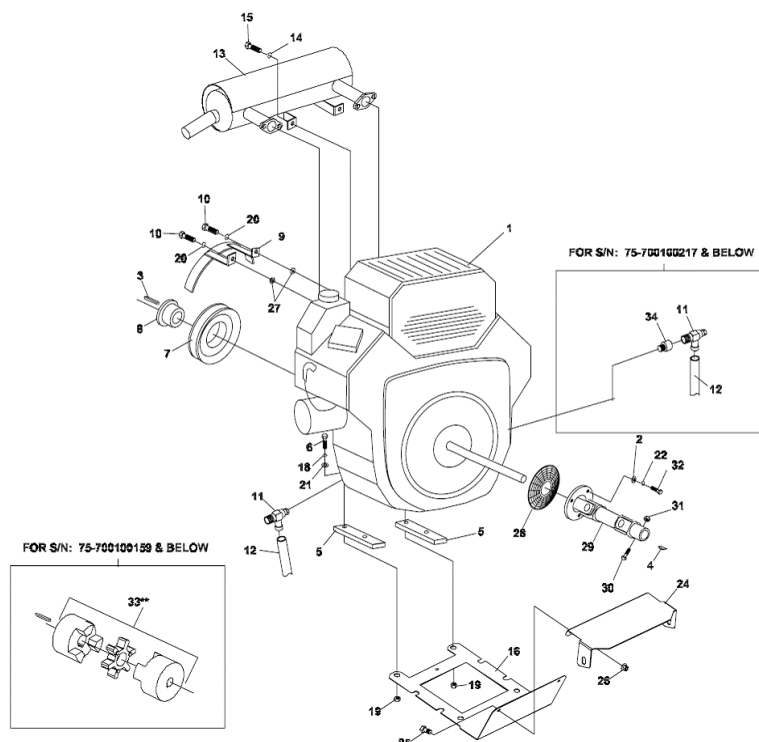
### **Generac Engine/ShortBlock Change**

**ISSUE:** Generac has eliminated the oil drain hole Steiner was using on the 430. To accommodate this change we had to re-route the drain. In the event you have to short-block or replace the engine in the 430 you will need to modify the unit as follows;

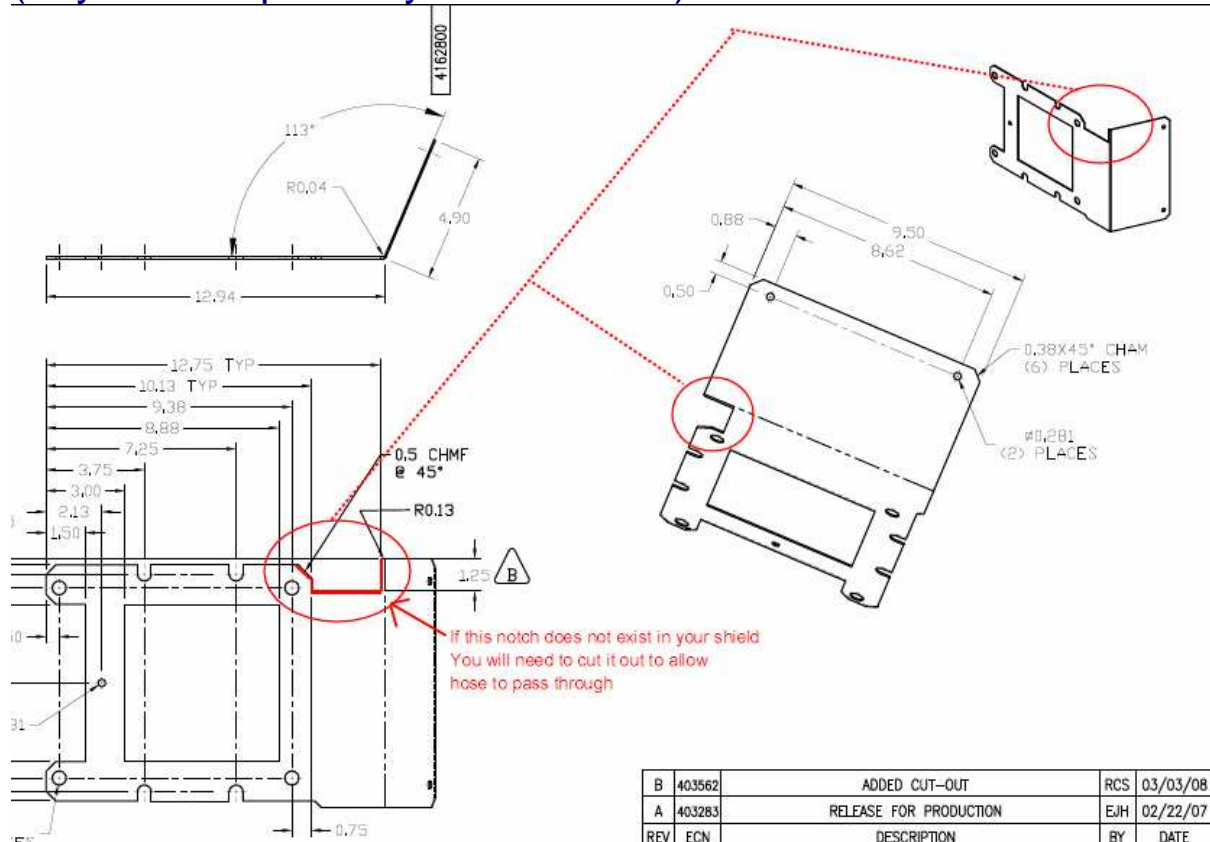
First, install the oil drain valve, ref.# 11, directly into the engine block. (Do not use the coupler, ref.# 34)

Orient the valve back toward the operator so that the hose will route over the axle and through the hole in the bottom heat shield, ref.# 16. The outlet of the petcock is rotated down approximately 10 degrees from the horizontal plane.

The hose length, ref.# 12 is now 15". Use the axle hoses to help route oil drain hose. See the attached picture to insure the customer has the hole in his shield. If the hole is not there, it needs to be cut out. See drawing next page.



Below is a print of the shield (#4162800) and the cut-out that will need to be made if the shield does not already have the cut-out in it (or you can opt to buy a new shield).



Warranty does not apply. This is an informational bulletin only.

If you have any questions please contact Commercial Grounds Care, Inc.

Customer Service Department @ 920-699-2000

This bulletin is relevant to the departments shown below. Please circulate as appropriate.

SERVICE

☒

WARRANTY

☐

SALES

☐

PARTS

☐
