

MAN 4163417
Rev. B 01-2014



544878
REN-O-THIN HONDA



OP / PARTS MANUAL

CALIFORNIA

Proposition 65 Warning

Diesel engine exhaust and some of its constituents are known to the State of California to cause cancer, birth defects and other reproductive harm.

⚠ WARNING

The engine exhaust from this product contains chemicals known to the State of California to cause cancer, birth defects or other reproductive harm.

Californie Proposition 65 Avertissement

Les échappements des moteurs diesel et certains de leurs composés sont reconnus par l'Etat de Californie pour être cancérigènes, provoquer des défauts congénitaux et d'autres dangers en matière de reproduction.

⚠ AVERTISSEMENT

L'émission du moteur de ce matériel contient des produits chimiques que l'Etat de Californie considère être cancérigènes, provoquer des défauts congénitaux et d'autres dangers en matière de reproduction.

**California Advertencia
de la Proposicion 65**

El estado de California hace saber que los gases de escape de los motores diesel y algunos de sus componentes producen cáncer, defectos de nacimiento y otros daños en el proceso de reproducción humana.

⚠ ADVERTENCIA

El estado de California hace saber que los gases de escape de este producto contienen productos químicos que producen cáncer, defectos de nacimiento y otros daños en el proceso de reproducción humana.

CALIFORNIA

Proposition 65 Warning

Battery posts, terminals, wiring insulation, and related accessories contain lead and lead compounds, chemicals known to the State of California to cause cancer and birth defects or other reproductive harm.
WASH HANDS AFTER HANDLING.

IMPORTANT MESSAGE

Thank you for purchasing this Schiller Grounds Care, Inc. product. You have purchased a world class product, one of the best designed and built anywhere.

This machine comes with a Technical Manual containing safety, operation, parts, maintenance and service information. The useful life and good service you receive from this machine depends to a large extent on how well you read and understand this manual. Treat your machine properly, lubricate and adjust it as instructed, and it will give you many years of reliable service.

Your safe use of this Schiller Grounds Care, Inc. product is one of our prime design objectives. Many safety features are built in, but we also rely on your good sense and care to achieve accident-free operation. For best protection, study the manual thoroughly. Learn the proper operation of all controls. Observe all safety precautions. Follow all instructions and warnings completely. Do not remove or defeat any safety features. Make sure those who operate this machine are as well informed and careful in its use as you are.

See a Schiller Grounds Care, Inc. dealer for any service or parts needed. Schiller Grounds Care, Inc. service ensures that you continue to receive the best results possible from Schiller Grounds Care, Inc. products. You can trust Schiller Grounds Care, Inc. replacement parts because they are manufactured with the same high precision and quality as the original parts.

Schiller Grounds Care, Inc. designs and builds its equipment to serve many years in a safe and productive manner. For longest life, use this machine only as directed in the manual, keep it in good repair and follow safety warnings and instructions. You'll always be glad you did.

Schiller Grounds Care, Inc.
One Bob Cat Lane
Johnson Creek, WI 53038-0469

| TABLE OF CONTENTS | PAGE |
|--------------------------------------|--------|
| SAFETY..... | 2 |
| LABELS..... | 3 |
| SET-UP..... | 4, 5 |
| OPERATION..... | 6, 7 |
| SERVICE..... | 8, 9 |
| STORAGE/SPECIFICATIONS | 10 |
| PARTS SECTION..... | 11 |
| CHASSIS GROUP FIGURE 1 | 12, 13 |
| ENGINE AND GUARD GROUP FIGURE 2..... | 14, 15 |
| FLAIL BLADE REEL FIGURE 3 | 16, 17 |
| HANDLE FIGURE 4 | 18, 19 |

NOTICE !!!

Unauthorized modifications may present **extreme** safety hazards to operators and bystanders and could also result in product damage.

Schiller Grounds Care, Inc. strongly warns against, rejects and disclaims any modifications, add-on accessories or product alterations that are not designed, developed, tested and approved by Schiller Grounds Care, Inc. Engineering Department. Any Schiller Grounds Care, Inc. product that is altered, modified or changed in any manner not specifically authorized after original manufacture—including the addition of “after-market” accessories or component parts not specifically approved by Schiller Grounds Care, Inc.—will result in the Schiller Grounds Care, Inc. Warranty being voided.

Any and all liability for personal injury and/or property damage caused by any unauthorized modifications, add-on accessories or products not approved by Schiller Grounds Care, Inc. will be considered the responsibility of the individual(s) or company designing and/or making such changes. Schiller Grounds Care, Inc. will vigorously pursue full indemnification and costs from any party responsible for such unauthorized post-manufacture modifications and/or accessories should personal injury and/or property damage result.



This symbol means:
ATTENTION!
BECOME ALERT!

Your safety and the safety of others is involved.

Signal word definitions:

The signal words below are used to identify levels of hazard seriousness. These words appear in this manual and on the safety labels attached to Schiller Grounds Care, Inc. machines. For your safety and the safety of others, read and follow the information given with these signal words and/or the symbol shown above.

⚠ DANGER

DANGER indicates an imminently hazardous situation which, if not avoided, **WILL** result in death or serious injury.

⚠ WARNING

WARNING indicates a potentially hazardous situation which, if not avoided, **COULD** result in death or serious injury.

⚠ CAUTION

CAUTION indicates a potentially hazardous situation which, if not avoided, **MAY** result in minor or moderate injury. It may also be used to alert against unsafe practices or property damage.

CAUTION

CAUTION used without the safety alert symbol indicates a potentially hazardous situation which, if not avoided, **MAY** result in property damage.

Schiller Grounds Care, Inc.

One Bobcat Lane
Johnson Creek, WI 53038 U.S.A
Phone: 920-699-2000
Fax: 920-699-3683

MODEL NUMBER

SERIAL NUMBER

MODEL NUMBER: This number appears on sales literature, technical manuals and price lists.

SERIAL NUMBER: This number appears only on your mower. It contains the model number followed consecutively by the serial number. Use this number when ordering parts or seeking warranty information.

**WARNING**

TO PREVENT POSSIBLE HEARING LOSS,
WEAR EAR PROTECTION IF THIS MACHINE
IS OPERATED MORE THAN 4 HOURS. 521813

OPERATING INSTRUCTIONS**BEFORE OPERATING**

1. CHECK FOR LOOSE, DAMAGED OR MISSING PARTS. REPAIR BEFORE OPERATING MACHINE.
2. ADJUST BLADE HEIGHT TO 1/8" (3MM) OFF GROUND WHEN MACHINE IS PARKED ON HARD LEVEL SURFACE.
3. RESET REAR AXLE POSITION IF PROPER HEIGHT CANNOT BE OBTAINED WITH THE FRONT ADJUSTER.

OPERATION

1. STAND BEHIND HANDLEBAR. PULL CONTROL BAIL BACK TO HANDLEBAR AND HOLD TO ENGAGE REEL.
2. RESET BLADE HEIGHT AS NECESSARY TO OBTAIN DESIRED RAKING DEPTH
3. STOP REEL WHEN TURNING AROUND AND CROSSING HARD SURFACES OR OBSTRUCTIONS.
4. IF ENGINE STARTS TO BOG DOWN. REDUCE WALKING SPEED AND/OR PUSH DOWN ON HANDLEBAR TO LIFT REEL SLIGHTLY UNTIL ENGINE RECOVERS.

522390

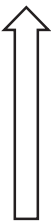
RAISE
REEL
↓

↑
LOWER
REEL

1
2
3
4
5
6
7
8
9
10
11
12
13

520913

DIS
ENG
AGE



ENG
AGE



520912

**WARNING**

FAILURE TO HEED THESE WARNINGS MAY RESULT IN PERSONAL OR FATAL INJURY TO YOU OR OTHERS AND MAY ALSO RESULT IN EQUIPMENT AND/OR PROPERTY DAMAGE.

READ, STUDY AND UNDERSTAND ALL WARNING LABELS AND OPERATING INSTRUCTIONS FURNISHED WITH THIS EQUIPMENT PRIOR TO USE. IF ANY PART OF THIS MATERIAL IS UNCLEAR, CONTACT YOUR FACTORY REPRESENTATIVE FOR CLARIFICATION. NEVER ALLOW UNSKILLED OR IMPROPERLY TRAINED PERSONNEL TO OPERATE THIS EQUIPMENT. BEFORE SERVICING, OR MAKING ADJUSTMENTS, STOP ENGINE. NEVER OPERATE EQUIPMENT WITHOUT GUARDS/SHIELDS IN PLACE. KEEP HANDS AND FEET AWAY FROM ROTATING BLADES, AERATING TINES AND KNIVES, AND DRIVE BELTS. STOP REEL OR RAISE AERATING TINES AND KNIVES BEFORE CROSSING SIDEWALKS OR OTHER HARD SURFACES. IT IS YOUR RESPONSIBILITY TO KEEP ALL LABELS (DECALS) AND INSTRUCTIONAL LITERATURE LEGIBLE AND INTACT. REPLACEMENT LABELS (DECALS) AND LITERATURE ARE AVAILABLE FROM THE FACTORY.

522394

GENERAL NOTE: FRONT, REAR, RIGHT HAND AND LEFT HAND REFERENCES BELOW ARE WITH RESPECT TO AN OPERATOR AT THE CONTROLS.

EQUIPMENT AND PARTS INSPECTION

1. Remove equipment and parts from the packing box and inspect for possible shipping damage.
2. **NOTE:** In order to avoid scratching the paint when unfolding the handle, fully loosen the knobs until they contact the nuts. Then spread apart the handle while rotating.

WHEEL BEARING LUBRICATION

Using a pressurized lubrication gun and a lithium based lubricant, lubricate the wheel bearings. This procedure should be done at the time of setup and also after every 25 hours of service.

NOTE: During setup, each wheel cavity should be filled. The cavity is full when lubricant is seen coming out of bearing.

BLADE HEIGHT ADJUSTMENT

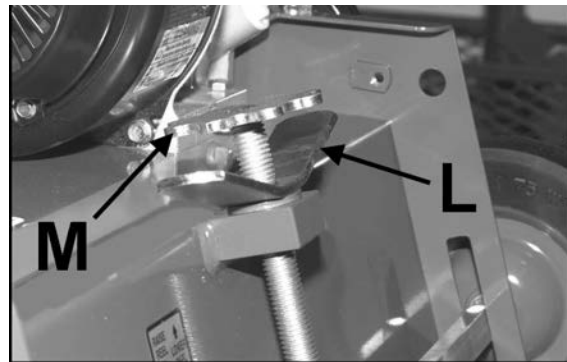
Blade height is adjusted by loosening the locking lever **L** and turning the adjusting knob **M** to raise or lower the front wheels.

After installing any reel, make the first adjustment on a hard level surface.

Adjust the blades to 1/8" (3 mm) above the surface. Test this setting on a small area, then adjust the blades to turf conditions as required. Each number on the adjustment decal represents a change of 1/8" (3mm).

If the desired blade position cannot be obtained by adjusting the front wheels, the rear wheels can be adjusted. Mounting the wheels in the top hole lowers the blades and mounting the wheels in the bottom hole raises the blades.

The front axle may be locked in the down position to prevent the floating action if desired. Install and secure 1/2" screws, washers, lockwashers and nuts in the slots above the axle. This will prevent the axle from moving.



REN-O-THIN

⚠ WARNING

DO NOT operate this equipment until you have thoroughly read and understand the operation section of this manual.

DO NOT operate equipment without all shields in place.

DO NOT make adjustments or perform any maintenance while the engine is running.

NEVER start or run the engine inside where exhaust fumes can collect. Carbon monoxide present in the exhaust is an odorless and deadly gas.

Gasoline is extremely flammable and highly explosive under certain conditions. Always stop the engine and do not smoke or allow open flames or sparks when refueling. **BE SURE** to install fuel cap after refueling.

DO NOT fill containers in a vehicle or on a truck or trailer bed with a plastic liner. Fill containers on the ground away from the vehicle.

When practical, remove gas powered equipment from the truck or trailer and refuel it on the ground. If equipment must be refueled on the truck or trailer, refuel from a portable container rather than a dispenser nozzle.

Keep the dispenser nozzle in contact with the rim of the fuel tank or container opening until fueling is complete. Do not use a nozzle lock-open device.

Any warning decal that becomes illegible should be replaced immediately.

To prevent injuries from thrown blades, **NEVER** operate the unit with reel blades that are missing, cracked, badly bent or in any type of abnormal condition.

Before operating, check the area and remove any object which may present a safety hazard or damage the equipment.

To prevent injury from rotating blades, **NEVER** place hands or feet beneath the unit.

This unit is not self propelled by a mechanical drive system. However, under some conditions the reel rotation may cause the unit to move under its own power.

Engage the reel **ONLY** when you are in the proper operator's position behind the handle.

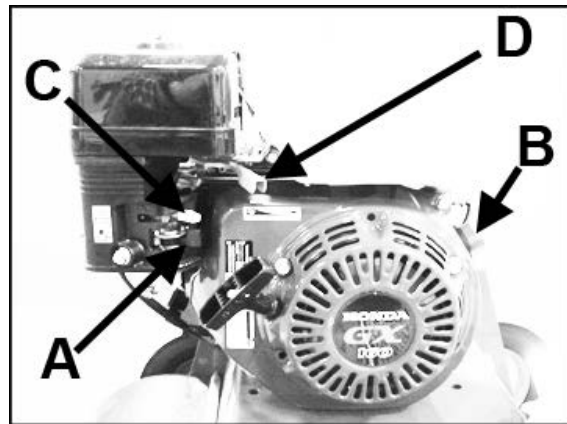
The clutch bail is designed to be held by the operator to keep the reel belt engaged **ONLY** during use. **DO NOT** clamp or fasten the bail to the handle. If the reel is allowed to rotate while the operator is not in the proper operating position, the unit may move on its own. This will create an unsafe situation in which the operator and/or bystanders may be injured.

DAILY PRE-OPERATION CHECK

1. Visually check for loose or damaged parts and fasteners. Repair or replace as needed before unit is placed into operation.
2. Check the reel for bent or broken blades; replace as necessary.
3. Check engine oil level. Add oil if necessary, following the engine manufacturer's recommendations. Refer to engine manual included with literature packet.
4. Fill the fuel tank with the amount and type of fuel recommended by the engine manufacturer.

STARTING THE ENGINE

1. Turn fuel shut-off valve **A** to "ON" position.
2. Rotate stop switch **B** to "ON" position.
3. Move manual choke control lever **C** to "CHOKE" position.
4. Move engine throttle control lever **D** to "FAST" position.
5. Grasp starter grip and pull slowly until resistance is felt, then pull cord rapidly to start engine. Repeat if necessary with choke opened slightly.
6. After engine starts, move choke **C** to "RUN" position.
7. Adjust throttle control **D** on engine as required.



OPERATING TIPS

1. Start the unit in motion **BEFORE** engaging the reel to prevent unnecessary damage to the turf and to avoid bogging down the engine. Disengage the reel before stopping forward motion.
2. Make all passes across the turf at a uniform speed.
3. Disengage the reel at the end of each pass and before slowing or stopping to make a turn. This prevents turf damage while turning the unit.

4. If the engine bogs down while going through a thick patch of turf, push down on the handle just enough to raise the reel and allow the engine to return to normal speed.

NOTE: Never cross hard objects or surfaces (such as sidewalks, driveways, stepping stones, etc.) with the reel engaged. Severe blade damage may occur.

FOLDING HANDLES

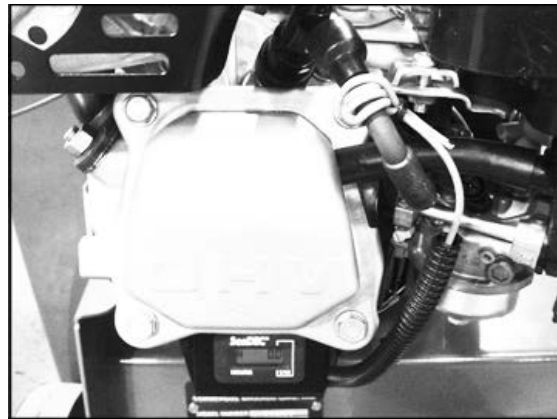
1. Fully loosen both knobs until they contact the keeper nuts.
2. Unhook retainers from retainer pins.
3. While supporting the upper handles with one hand, remove the retainer pins from the handles, letting them hang from the lanyards.

4. Pull the upper handles away from the lower handles and pivot the upper handles both up and forward. Note that the upper handles will rest on the engine. Protect the engine as required so there is no wear from the handles.
5. To return handles to the normal position, repeat the above process in the reverse order and re-assemble all items.

REN-O-THIN

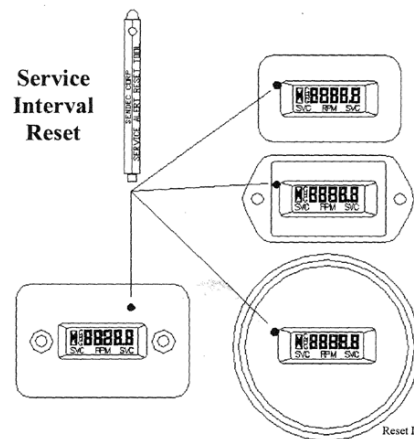
HOUR METER

This machine is equipped with an hour meter. The display reads to tenths of an hour for the amount of time that the engine is running. The wire from the hour meter is wrapped around the spark plug wire four (4) turns and secured with Ty-wraps.



While *Flast Alert* is active, hold the tip of the Key Kancel Wand against the meter as shown. Dot indicates position for tip placement for the various meter case styles. With in several seconds, the display will stop flashing indicating the Service Interval has been reset.

For All Units Equipped With Key Kancel Option Using Wand For Reset



Reset Instruction Rev A
04/05/02 p/n 801-403

SUGGESTED USES

Flail Blade Reel, Part No. 544440

1/8" (3 mm) flail blades for thatch control and breaking up soil cores after aerating. This reel is **NOT RECOMMENDED** for fine lawns and turf, such as golf course greens.

⚠ WARNING

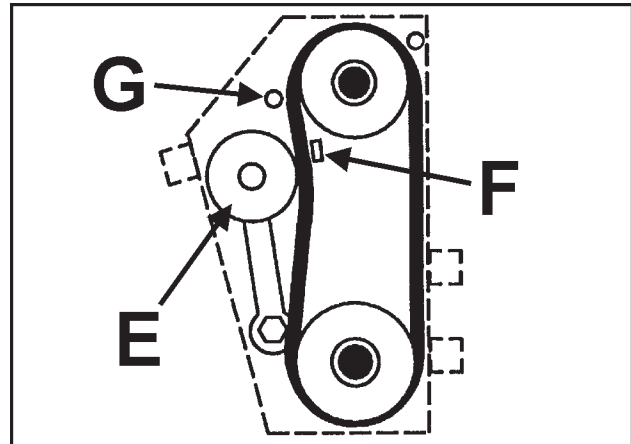
When replacement parts are required, use genuine **Schiller** Grounds Care, Inc. parts or parts with equivalent characteristics, including type, strength and material. Failure to do so may result in product malfunction and possible injury to the operator and/or bystanders.

BELT REPLACEMENT

Belt tension is maintained by a spring loaded idler, controlled by the clutch bail. No belt tension adjustment is necessary when proper belts are used.

NOTE: A matched pair of belts must be used for correct operation. If one belt needs to be replaced, you **MUST** replace both belts to assure proper belt tension.

1. Remove the belt guard and old belts from unit.
2. Place the new belts between the idler pulley **E** and the snubber **F** on the idler arm and then over the engine and reel pulleys.
3. Install the belt guards. Make sure the belt stop rod **G** is outside of the belt.



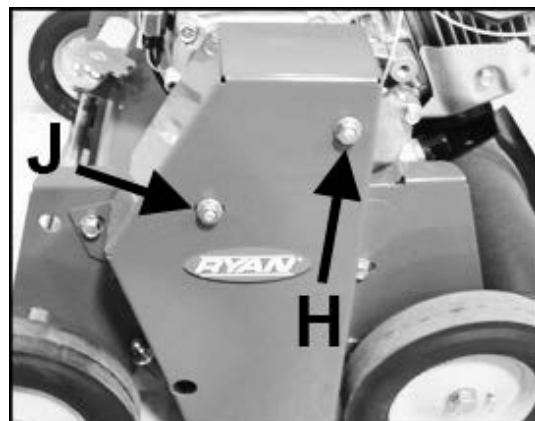
LUBRICATION

The reel and idler pulley bearings are factory sealed and require no lubrication. Wheel bearings have lubrication fittings and require lubrication with a standard lithium based lubricant after every 25 hours of use.

BELT GUARD ROD ADJUSTMENT

There are two belt guard rods mounted in the belt guard. Rod **H** helps to prevent the belts from slipping off the engine pulley. Rod **J** (belt stop rod) acts as a belt brake when the clutch bail is released, ensuring that the reel stops quickly.

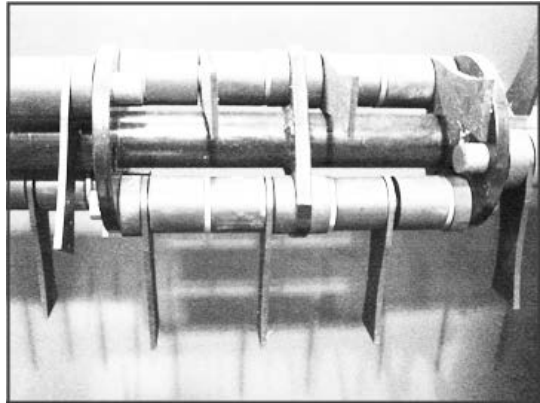
It is important that these two rods are adjusted correctly. If the belt guard is removed for any reason, make sure the two rods are positioned on the outside of the belt as shown above BELT REPLACEMENT SECTION.



BLADE REPLACEMENT**Flail Blade reels**

Work on only one of the six blade shaft assemblies at a time.

1. Remove the cotter pin from one end of one of the blade shafts and pull the shaft out.
2. Replace the blades and other worn parts and re-assemble in the proper order while sliding the shaft back into place. There are three sections. Each of the 3 sections contains two blade shaft assemblies. Note that the blades and washers alternate between the two blade shaft assemblies.
3. Install a new cotter pin to secure the shaft.



⚠ WARNING

After daily usage of unit.

- Before the equipment is put in to storage for any period exceeding 30 days, the following steps should be taken.**

3. While the engine is still warm, drain the crankcase oil and replace with the proper weight oil corresponding to the season the equipment will next be used.
4. Remove the spark plug and squirt a small amount of engine oil into the cylinder. Slowly pull the starter a few times to distribute oil in the cylinder and reinstall the spark plug.
5. Check the reel for damaged blades and replace as needed.
6. Lubricate the wheel bearings with a standard lithium based lubricant.

To put the equipment into service after an extended period of storage:

1. Check for loose parts and tighten if necessary.
2. Check for damaged blades and replace as necessary.
3. Fill the fuel tank and then check the engine oil level.
4. Start the engine and check for fuel leaks. Repair any leaks before operating the unit.

Chassis:..... 12 gauge steel, formed and welded
Reduction:..... 1.33:1 (engine to reel)
Wheelbase:.....14 5/8" (371 mm) at level position
Reel Speed:..... 2700 RPM
Cutting Width:..... 18" (457mm)
Cutting Depth:..... 7/8" (22mm)
Blade Adjustment:... 1" (25mm) above ground level
to 7/8" (22mm) below ground level

Weight125 lbs. (56 Kg.)

Engine:

| | |
|---------------|------------------------|
| Model..... | Model GX160 |
| | Type K1QX2 |
| | 4 cycle 5.5 H.P. Honda |
| Starter..... | Recoil, on/off switch |
| Governor..... | 3600 RPM, no load |

PARTS SECTION

FIGURE 1

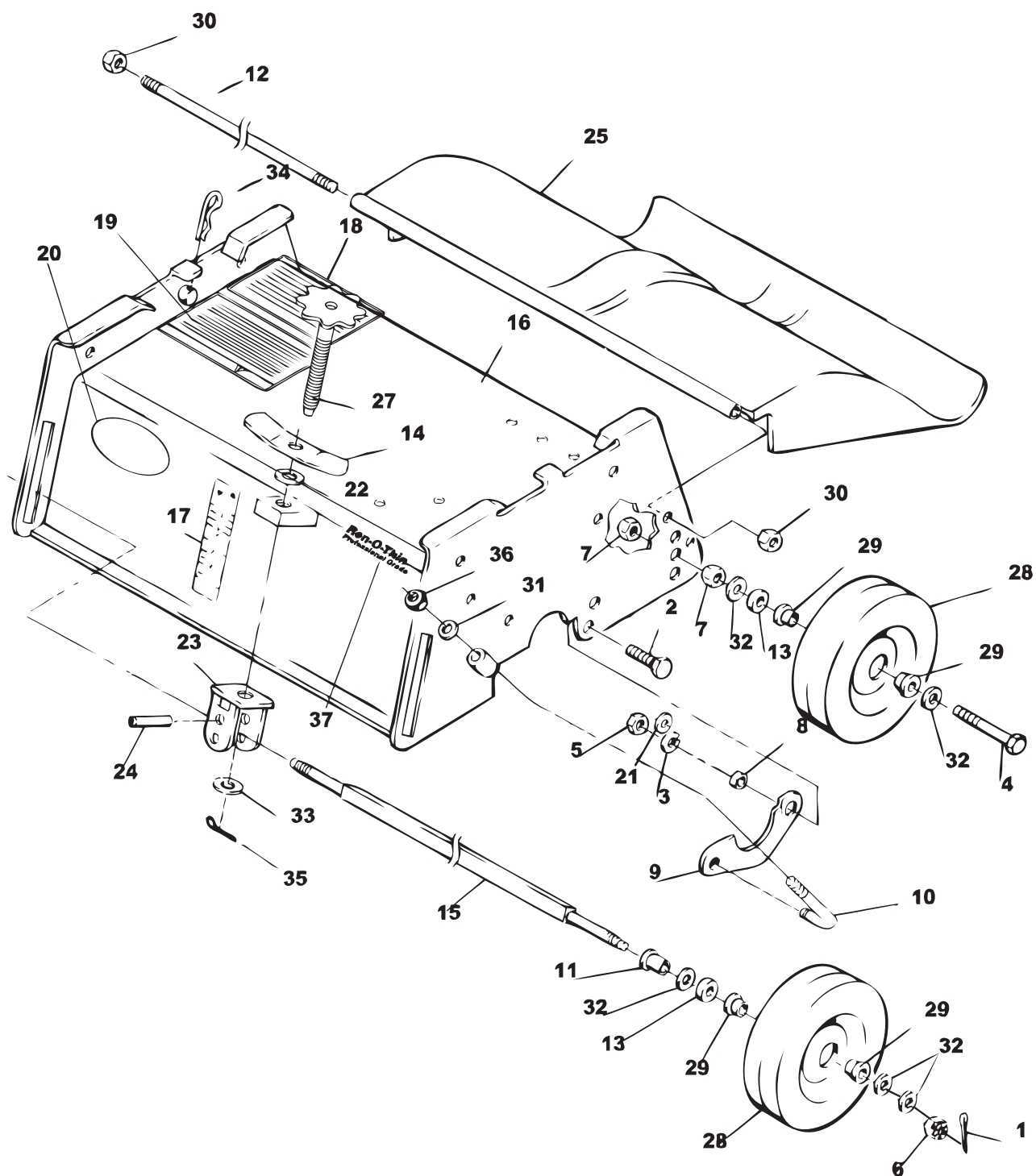
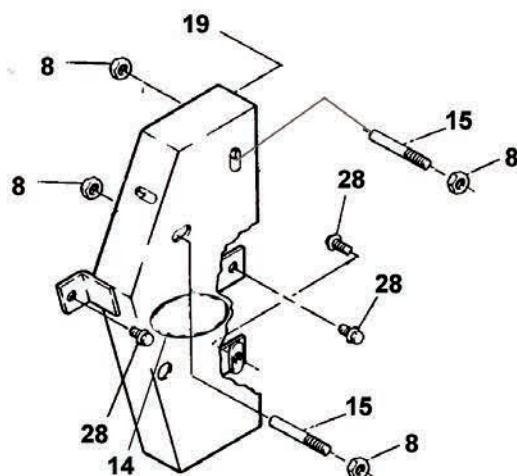
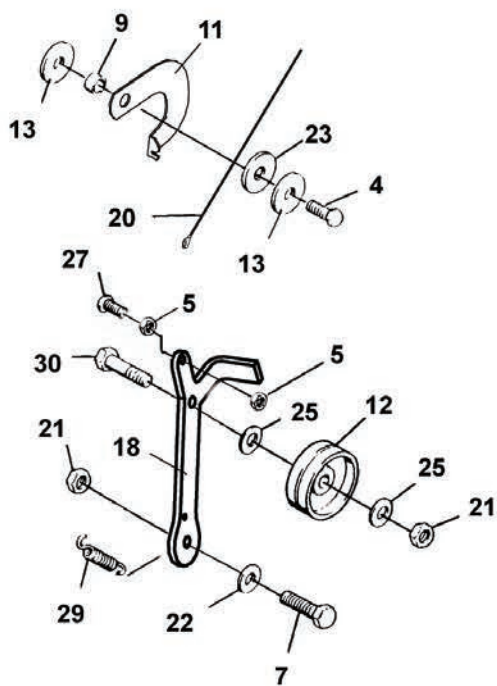
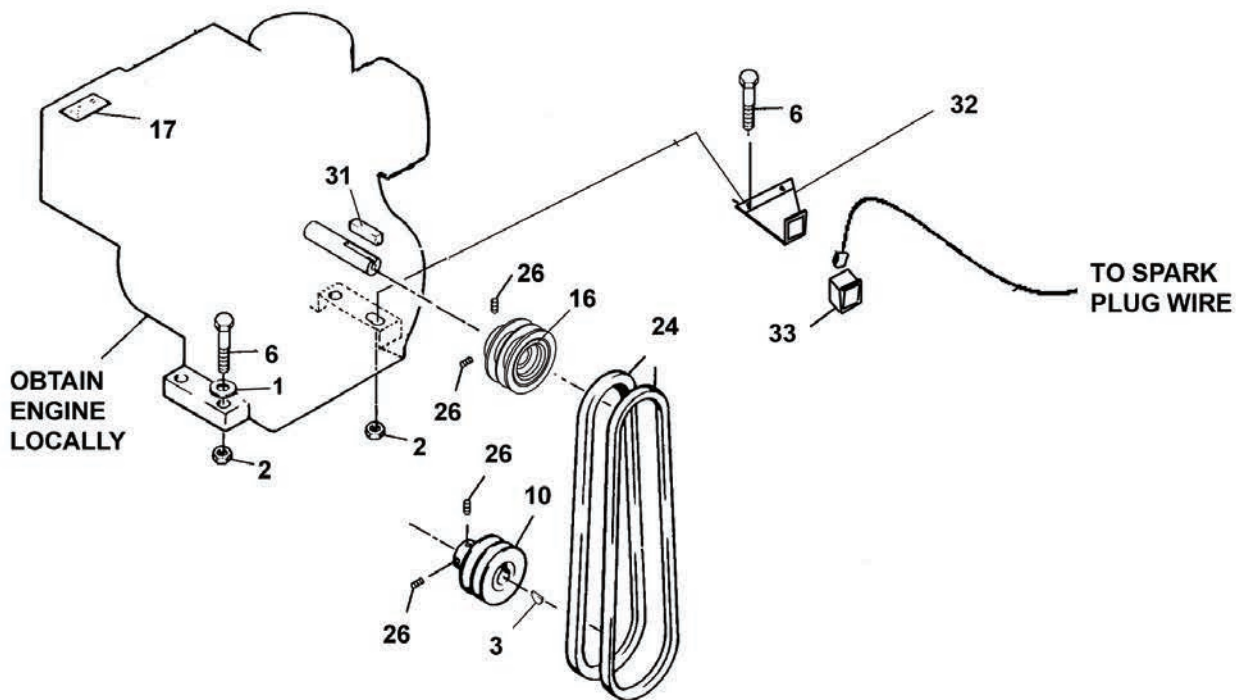


FIGURE 1

| ITEM | PART NO. | DESCRIPTION | QTY | ITEM | PART NO. | DESCRIPTION | QTY |
|------|-----------|--|-----|------|----------|-------------|-----|
| 1 | 64140-9 | COTTER PIN, 1/8X1-1/4 | 2 | | | | |
| 2 | 64123-107 | BLT-HEX 5/16-18X7/8 | 2 | | | | |
| 3 | 64006-02 | LCKWSHER-HELICAL 5/16 | 2 | | | | |
| 4 | 64123-31 | BOLT-1/2-13X3 HEX | 2 | | | | |
| 5 | 64025-02 | NUT-HEX 5/16-18 | 2 | | | | |
| 6 | 64025-30 | NUT-HEX 1/2-20 SLOT | 2 | | | | |
| 7 | 64025-19 | NUT-1/2-13 HEX | 4 | | | | |
| 8 | 517226 | BRG,SLV .33 .50 .20 IRON | 2 | | | | |
| 9 | 4131941.7 | CLAMP, REEL | 2 | | | | |
| 10 | 4130674 | CLAMP, ROD LOWER | 2 | | | | |
| 11 | 520875 | BUSHING,FLANGED | 2 | | | | |
| 12 | 520877 | ROD,HINGE (PLATED) | 1 | | | | |
| 13 | 524229 | WASHER,FLAT | 4 | | | | |
| 14 | 522375 | LEVER,LOCKING (PLATING) | 1 | | | | |
| 15 | 522385 | AXLE PLATING | 1 | | | | |
| 16 | 2702114 | CHASSIS AY - SERVICE (INCLUDES ITEMS 17-20) | 1 | | | | |
| 17 | 520913 | DECAL,INSTRUCTION | 1 | | | | |
| 18 | 522390 | DECAL,OPERATING INST | 1 | | | | |
| 19 | 522394 | DECAL,WARNING-OPER | 1 | | | | |
| 20 | 4161123 | LABEL-RYAN, LARGE | 1 | | | | |
| 21 | 64163-55 | WASHER .328X.75X14 GA | 2 | | | | |
| 22 | 64163-73 | WSHR-.625IDX1.12DX.062 | 2 | | | | |
| 23 | 545859 | PIVOT AY (PLATED) (INCLUDES ITEM 24) | 1 | | | | |
| 24 | 316947 | PIN,SPIROL.312 1.250PS | 2 | | | | |
| 25 | 545861 | SHIELD AY,TRAILING (INCLUDES ITEM 26) | 1 | | | | |
| 26* | 64215-13 | RIVET, POP IFI#66 LG HD | 5 | | | | |
| 27 | 540273 | SCREW AY,ADJUSTING | 1 | | | | |
| 28 | 4124193 | WHEEL, 8X2.5 .75BRG SP (INCLUDES ITEM 29) | 4 | | | | |
| 29 | 520983 | BALL BEARING | 8 | | | | |
| 30 | 64229-02 | LOCK NUT-NYLON 5/16-18 | 2 | | | | |
| 31 | 64163-31 | WASHER, 25/64X1X12 | 2 | | | | |
| 32 | 64163-67 | WASHER-.516X1X12GA | 10 | | | | |
| 33 | 64163-61 | WSHR .81X.406X16GA | 1 | | | | |
| 34 | 64168-7 | COTTER-HAIRPIN .091X1.88 | 2 | | | | |
| 35 | 64140-3 | COTTER PIN-3/32X3/4 | 1 | | | | |
| 36 | 64236-03 | NUT,3/8-24 FLEXLOCK | 2 | | | | |
| 37 | 4124338 | LABEL-FRONT, REN-O-THIN | 1 | | | | |

*NOT ILLUSTRATED

FIGURE 2



| ITEM | PART NO. | DESCRIPTION | QTY | ITEM | PART NO. | DESCRIPTION | QTY |
|------|------------------|--------------------------|-----|------|----------|-------------|-----|
| 1 | 64163-55 | WASHER .328X.75X14GA | 1 | | | | |
| 2 | 64268-02 | NUT-FL NYLON LCK 5/16-18 | 4 | | | | |
| 3 | 64164-19 | KEY WOODRUFF.19X.75 #9 | 1 | | | | |
| 4 | 64123-271 | BOLT, HEX5/16-24 X 1 | 1 | | | | |
| 5 | 64025-01 | NUT-1/4-20 HEX | 2 | | | | |
| 6 | 64123-69 | BOLT-5/16-18X1-1/2 HEX | 4 | | | | |
| 7 | 64123-16 | BLT-HEX 3/8-16X1-1/4 | 1 | | | | |
| 8 | 64141-6 | NUT, 5/16-18 | 4 | | | | |
| 9 | 517226 | BRG,SLV .33 .50 .20 | 1 | | | | |
| 10 | 517139 | PULLEY | 1 | | | | |
| 11 | 4133104.7 | ARM,DEFLECTOR | 1 | | | | |
| 12 | 520870 | PULLEY,2.75 DIA | 1 | | | | |
| 13 | 64163-29 | WASHER | 2 | | | | |
| 14 | 4161125 | LABEL-OVAL RYAN, SMALL | 1 | | | | |
| 15 | 520902 | ROD,STUD THREADED | 2 | | | | |
| 16 | 524779 | PULLEY, 3 IN DIA | 1 | | | | |
| 17 | 521813 | DECAL, WARNING SOUND | 1 | | | | |
| 18 | 4133065.7 | ARM AY,IDLER | 1 | | | | |
| 19 | 4164163 | S-GUARD AY, BELT DRIVE | 1 | | | | |
| | (INCLUDES 8 &15) | | | | | | |
| 20 | 4136053 | CABLE AY | 1 | | | | |
| 21 | 64151-2 | NUT,3/8-16 HX EDGELCK | 2 | | | | |
| 22 | 64163-31 | WASHER, 25/64X1X12 | 1 | | | | |
| 23 | 64163-19 | WSHR-33/64X1-1/4X12GA | 1 | | | | |
| 24 | 524801 | BELT,V-2 MATCHED 30 3/8 | 1 | | | | |
| 25 | 64163-61 | WSHR .81X.406X16GA | 2 | | | | |
| 26 | 64044-18 | SCREW-SET 5/16-18 x 5/16 | 4 | | | | |
| 27 | 64123-07 | BOLT-1/4-20X1-1/2 HEX | 1 | | | | |
| 28 | 64139-13 | BLT-WLF 5/16-18X1/2 | 3 | | | | |
| 29 | 548995 | SPRING,EXTENSION | 1 | | | | |
| 30 | 64123-87 | BOLT-HEX 3/8-16X1-3/4 | 1 | | | | |
| 31 | 64164-39 | KEY-3/16 SQX1-3/4 | 1 | | | | |
| 32 | 4171856.7 | BRKT-HOUR METER | 1 | | | | |
| 33 | C100443 | METER-HOUR | 1 | | | | |

FIGURE 3

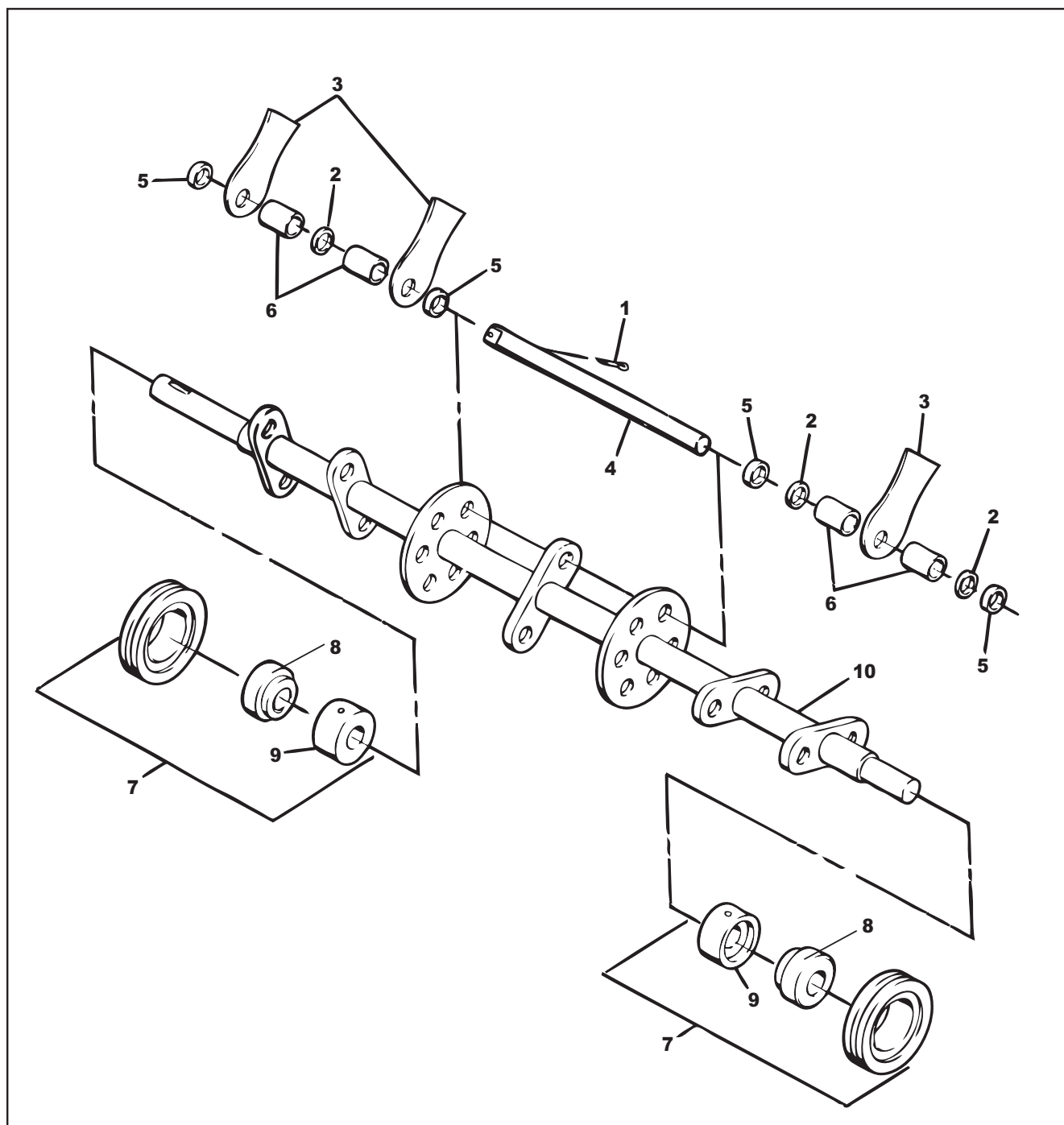
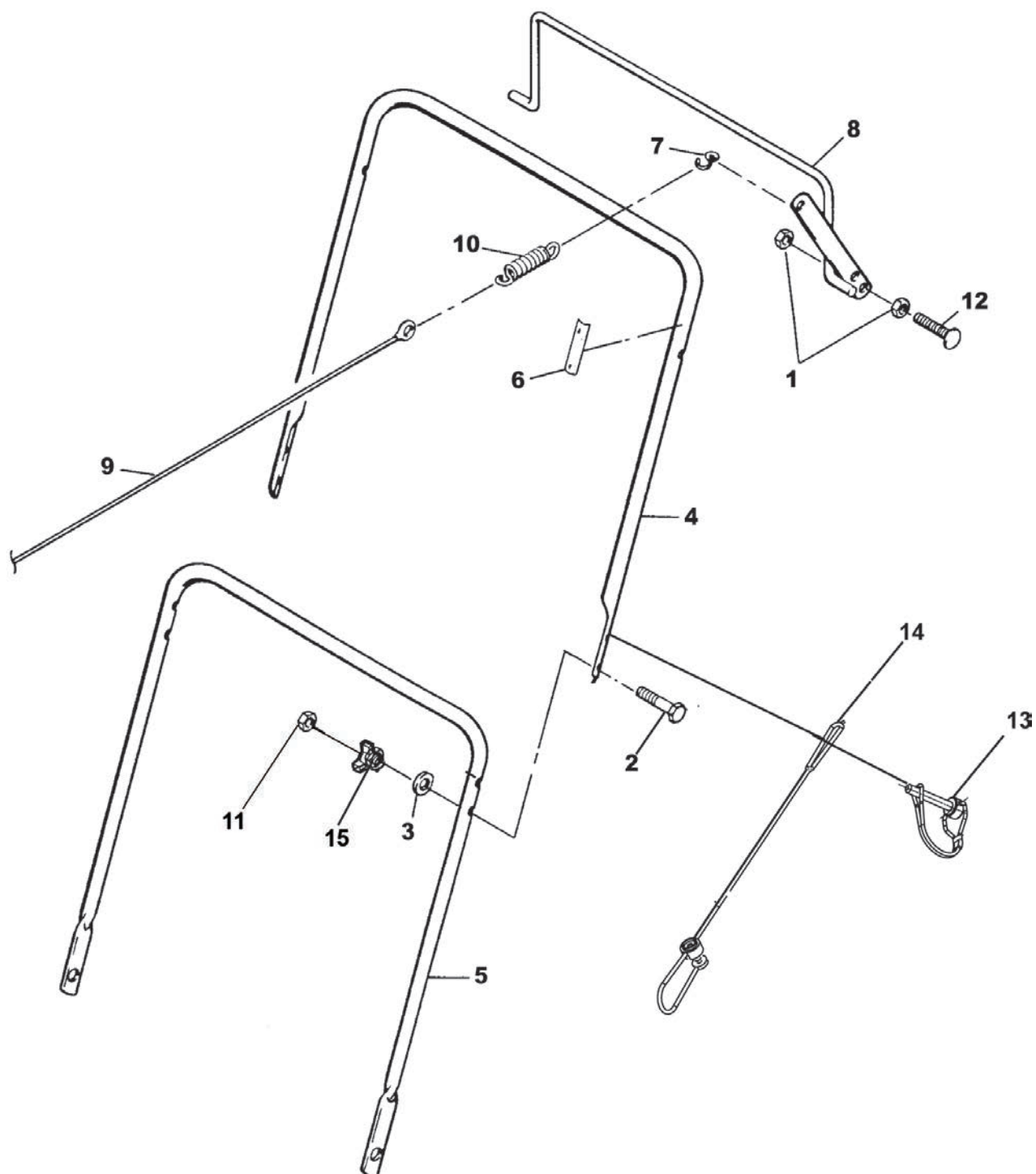


FIGURE 3

| ITEM | PART NO. | DESCRIPTION | QTY | ITEM | PART NO. | DESCRIPTION | QTY |
|------|----------|---|-----|------|----------|-------------|-----|
| 1 | 306956 | COTTER PIN | 6 | | | | |
| 2 | 64163-67 | WASHER-.516X1X12GA | 18 | | | | |
| 3 | 516897 | BLADE,FLAIL | 18 | | | | |
| 4 | 517155 | SHAFT | 6 | | | | |
| 5 | 517162 | SPACER, .328 (8mm) | 24 | | | | |
| 6 | 517163 | SPACER, .891 (23mm) | 24 | | | | |
| 7 | 545640 | PILLOW BLOCK AY (INCLUDES ITEMS 8 & 9) | 2 | | | | |
| 8 | 521856 | BEARING BALL | 2 | | | | |
| 9 | 521857 | COLLAR,BRG LOCKING | 2 | | | | |
| 10 | 546377.7 | SHAFT | 1 | | | | |

* NOT ILLUSTRATED

FIGURE 4



REN-O-THIN

HANDLE

FIGURE 4

| ITEM | PART NO. | DESCRIPTION | QTY | ITEM | PART NO. | DESCRIPTION | QTY |
|------|-----------|-------------------------|-----|------|----------|-------------|-----|
| 1 | 64025-02 | NUT-HEX 5/16-18 | 2 | | | | |
| 2 | 64018-32 | BOLT, CRG 1/4-20X2 | 2 | | | | |
| 3 | 64163-86 | WSHR-.256IDX.62ODX18GA | 2 | | | | |
| 4 | 4163430.7 | HANDLEBAR, UPPER | 1 | | | | |
| 5 | 520869.7 | HANDLEBAR, LOWER | 1 | | | | |
| 6 | 520912 | DECAL, REEL CONTROL | 1 | | | | |
| 7 | 521744 | RELEASE 'S' HOOK | 1 | | | | |
| 8 | 547441 | BAIL CONTROL AY | 1 | | | | |
| 9 | 4136053 | CABLE AY | 1 | | | | |
| 10 | 2702144 | SPRING,EXTENSION.63 4.3 | 1 | | | | |
| 11 | 64229-01 | LOCKNUT, HEX NYLON | 2 | | | | |
| 12 | 64018-34 | BLT-CAR 5/16-18X1-1/2 | 1 | | | | |
| 13 | 4163436 | RETAINER | 2 | | | | |
| 14 | 4163435 | LANYARD, NYLON | 2 | | | | |
| 15 | 4166195 | KNOB-1/4-FEMALE | 2 | | | | |

SCHILLER GROUNDS CARE, INC.
ONE BOB-CAT LANE
P.O. BOX 469
JOHNSON CREEK, WI 53038
920-699-2000
www.schillergc.com



©Schiller Grounds Care, Inc. 2010