

MAN 4164040  
Rev. A 02-2009



MODEL:

**744860A**

**LAWNIRE (TOW BEHIND)**



---

# OP / PARTS MANUAL



## IMPORTANT MESSAGE

Thank you for purchasing this Schiller Grounds Care, Inc. product. You have purchased a world class product, one of the best designed and built anywhere.

This machine comes with a Technical Manual containing safety, operation, parts and service information. The useful life and good service you receive from this machine depends to a large extent on how well you read and understand this manual. Treat your machine properly, lubricate and adjust it as instructed, and it will give you many years of reliable service.

Your safe use of this Schiller Grounds Care, Inc. product is one of our prime design objectives. Many safety features are built in, but we also rely on your good sense and care to achieve accident-free operation. For best protection, study the manual thoroughly. Learn the proper operation of all controls. Observe all safety precautions. Follow all instructions and warnings completely. Do not remove or defeat any safety features. Make sure those who operate this machine are as well informed and careful in its use as you are.

See a Schiller Grounds Care, Inc. dealer for any service or parts needed. Schiller Grounds Care, Inc. service ensures that you continue to receive the best results possible from Schiller Grounds Care, Inc. products. You can trust Schiller Grounds Care, Inc. replacement parts because they are manufactured with the same high precision and quality as the original parts.

Schiller Grounds Care, Inc. designs and builds its equipment to serve many years in a safe and productive manner. For longest life, use this machine only as directed in the manual, keep it in good repair and follow safety warnings and instructions. You'll always be glad you did.

**Schiller Grounds Care, Inc.  
One Bob Cat Lane  
Johnson Creek, WI 53038-0469**

TABLE OF CONTENTS.....	FIGURES .....	PAGE
SAFETY .....		2-4
LABELS .....		5
SET-UP.....		6-9
OPERATION.....		10
SERVICE .....		11
STORAGE .....		12
SPECIFICATIONS.....		13
AERATION TOOLS .....		14
PARTS SECTION.....		15
HYDRAULIC LIFT ACCESSORY .....	FIGURE 1 .....	16, 17
MANUAL LIFT ACCESSORY .....	FIGURE 2 .....	18, 19
MODEL 744860A.....	FIGURE 3 .....	20, 21

**NOTICE !!!**

Unauthorized modifications may present **extreme** safety hazards to operators and bystanders and could also result in product damage.

Schiller Grounds Care, Inc. strongly warns against, rejects and disclaims any modifications, add-on accessories or product alterations that are not designed, developed, tested and approved by Schiller Grounds Care, Inc.'s Engineering Department. Any Schiller Grounds Care, Inc. product that is altered, modified or changed in any manner not specifically authorized after original manufacture—including the addition of “after-market” accessories or component parts not specifically approved by Schiller Grounds Care, Inc.—will result in the Schiller Grounds Care, Inc. Warranty being voided.

Any and all liability for personal injury and/or property damage caused by any unauthorized modifications, add-on accessories or products not approved by Schiller Grounds Care, Inc. will be considered the responsibility of the individual(s) or company designing and/or making such changes. Schiller Grounds Care, Inc. will vigorously pursue full indemnification and costs from any party responsible for such unauthorized post-manufacture modifications and/or accessories should personal injury and/or property damage result.



This symbol means:  
**ATTENTION!**  
**BECOME ALERT!**

Your safety and the safety of others is involved.

**Signal word definitions:**

The signal words below are used to identify levels of hazard seriousness. These words appear in this manual and on the safety labels attached to Schiller Grounds Care, Inc. machines. For your safety and the safety of others, read and follow the information given with these signal words and/or the symbol shown above.

**⚠ DANGER**

**DANGER** indicates an imminently hazardous situation which, if not avoided, **WILL** result in death or serious injury.

**⚠ WARNING**

**WARNING** indicates a potentially hazardous situation which, if not avoided, **COULD** result in death or serious injury.

**⚠ CAUTION**

**CAUTION** indicates a potentially hazardous situation which, if not avoided, **MAY** result in minor or moderate injury. It may also be used to alert against unsafe practices or property damage.

**CAUTION**

**CAUTION** used without the safety alert symbol indicates a potentially hazardous situation which, if not avoided, **MAY** result in property damage.



**MODEL NUMBER:** This number appears on sales literature, technical manuals and price lists.

**SERIAL NUMBER:** This number appears only on your mower. It contains the model number followed consecutively by the serial number. Use this number when ordering parts or seeking warranty information.

**PREPARING FOR SAFE OPERATION****Operator preparation and training****Read the Operation & Safety Manual**

- If an operator or mechanic cannot read, it is the owner's responsibility to explain this material to them. If any portion of this material is unclear, contact your factory representative for clarification.
- Become familiar with the safe operation of the equipment, operator controls and safety signs. Know how to stop the engine and attachments quickly in an emergency. Do not operate or allow another person to operate this machine if there are any questions about safety.
- All operators and mechanics should be trained. The owner is responsible for training the users.
- Wear appropriate clothing, including long trousers and safety goggles or safety glasses with side shields when operating. Do not operate barefoot or wearing open sandals. Long hair, loose clothing or jewelry may get tangled in moving parts.
- Never allow underage children, unskilled or improperly trained people to operate this equipment. Local regulations can restrict the age of the operator.
- Keep warning labels and this operator's manual legible and intact. Replacement labels and manuals are available from the factory
- Do not operate machine while under the influence of drugs or alcohol.
- The owner/user can prevent and is responsible for accidents or injuries occurring to themselves, other people or property.

**Site preparation and circumstances**

- Evaluate the terrain to determine what accessories and attachments are needed to properly and safely perform the job. Only use accessories and attachments approved by the manufacturer.
- Clear the area to be aerated of objects such as rocks, toys, wire or other debris that may be picked up or thrown by the machine.
- Be sure the area is clear of pets and people, especially young children. Never assume they will remain where you last saw them. Stop the machine if any enter the area.
- Aerate only in daylight or in good artificial light.

**Machine preparation**

- Do not tamper with or defeat safety devices. Keep guards, shields and interlock safety devices in place and in proper working condition. They are for your protection.
- Keep all fasteners such as nuts, bolts and pins well secured.
- Visually inspect tines and tine bolts for wear or damage. Replace worn or damaged tines and bolts.
- Verify that machine and attachments, if any, are in good operating condition.
- Do not engage lower machine until ready to aerate.

## OPERATING SAFELY

### In general

- Use extra care when loading or unloading the machine into a trailer or truck.
- Slow down and use caution when making turns and crossing roads and sidewalks.

### Slope Operation



#### WARNING

- Do not operate on slopes if uneasy or uncertain. Ultimate responsibility for safe operation on slopes rests with the operator.
- Do not operate excessively steep slopes.
- Keep all movement on the slopes slow and gradual. Do not make sudden changes in speed or direction.
- Do not aerate near dropoffs, ditches or embankments. The machine could suddenly turn over if a wheel runs over the edge or an edge caves in.
- Do not turn on slopes unless necessary, and then turn slowly and downhill when possible.

## MAINTENANCE AND STORAGE SAFETY

### In general

- Maintain machine according to manufacturer's schedule and instructions for maximum safety and best results.
- Park machine on level ground.
- Never allow untrained personnel to service machine.
- Replace parts if worn, damaged or faulty. For best results, always replace with parts recommended by the manufacturer.
- Disconnect spark plug wire(s) before making any repairs.
- Do not dismantle the machine without releasing or restraining forces which may cause parts to move suddenly.
- Provide adequate support, e.g. jackstands for lifted machine or parts if working beneath.

### TINES



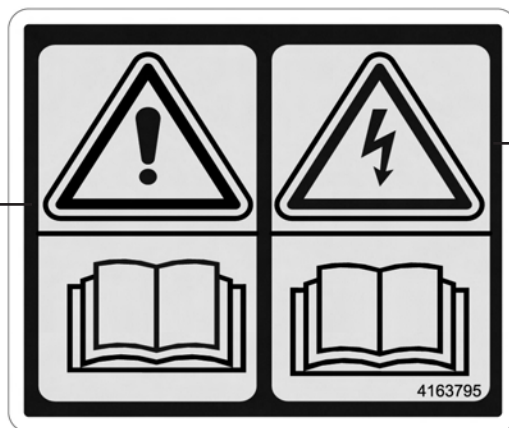
#### WARNING



- Aerator tines are sharp and can cut. use extra caution when handling. Remove obstructions with care. Wrap the tines or wear gloves.
- Only replace tines. Never straighten or weld them.
- Keep other persons away from tines.

-Read and Understand Operator manual.

-Replace if lost or damaged.



-Contacting underground utilities can cause leaks, explosions, or electrocution.

-Check operation area for underground utilities such as electrical, gas, or water lines.

-Do not operate where underground utilities are present.



-Tines can pierce or crush.

-Keep hands and feet clear of tines.



### WARNING!

-Impact Hazard

-Unit can tip over to rear in transport position.

-Control tongue when handling unit in transport position.

-Lower unit to working position before unhooking to prevent rear overturn.

-Store unit in working position.

**GENERAL NOTE: FRONT, REAR, RIGHT HAND AND LEFT HAND REFERENCES BELOW ARE WITH RESPECT TO AN OPERATOR AT THE CONTROLS.**

## SET-UP

### MODEL 54860A, TOW BEHIND

#### **⚠ WARNING**

**DO NOT use tractor hydraulics to hold aerator for servicing. Hydraulic lines may rupture causing the unit to fall suddenly.**

**Use caution when installing knives or tines. These items are sharp and should be handled with care. Wear leather or other suitable gloves.**

1. Remove and discard banding holding aerator to pallet.

**Refer to Figure 3 on pages 20-21.**

2. Locate and mark the center on the front side of the frame (4163369.7). Mark the center of the hitch assembly (4163370.2) in a location which can be seen when mounting it to the frame.
3. Using the center marks for alignment, mount the hitch assembly and clamping plate (547741) to the frame. The hitch assembly will mount on the bottom side of the frame for small tractors, and on the top side of the frame for large tractors.

**NOTE:** Install the manual lift accessory or the hydraulic lift accessory to the aerator before installing the tines or knife blades. An electric lift kit is also available (4131949) which contains set-up instructions. When used on a Bob-Cat or Bunton ZT200 mower, Hitch Kit 970315 is also available to provide a hook-up point on the mower. Refer to the following installation instructions for the proper application of the hydraulic or manual lift accessory.

If the hydraulic lift accessory is used, secure the hitch and clamping plate using three (3) 3/8-16X2-1/2" screws, lockwashers, and nuts. Mount the hose support (521905) onto the right front hole of the clamping plate. Secure using a 3/8-16 X 3" screw, large flat washer, lockwasher, and nut. (The hardware for each accessory is included in the appropriate accessory kit).

If the manual lift accessory is used, secure the hitch and clamping plate to the frame with four (4) 3/8-16X2-1/2" screws, lockwashers, and nuts.

4. Attach tractor to the aerator and carefully pull aerator and carefully pull aerator off the pallet. Stop tractor engine.

**HYDRAULIC LIFT ACCESSORY  
PART NO. 545711****⚠ WARNING**

Escaping hydraulic oil under pressure can have sufficient force to penetrate the skin, causing serious injury.

If a leak is suspected, use a piece of cardboard or wood, not your hands, to check for leaks.

If injured by escaping fluid, see a doctor at once. Serious infection or reaction can develop if proper medical treatment is not administered immediately.

Do not use a unit with a leaking hydraulic system. See your authorized Ryan dealer for necessary repairs.

**NOTE:** This lift accessory is designed to be used with a hydraulic system providing 700 p.s.i. (4,824kPa) or 1500 p.s.i. (10,341kPa) working pressure. It may work on systems providing lower pressures, but will raise the aerator much slower.

**⚠ WARNING**

Properly support the aerator, using jackstands, for removal of the right side transport wheel and leg assembly. For safe removal, the wheel and leg need to be at least 2 inches (50mm) above the ground and move freely in order to remove it from the axle shaft.

1. Remove the spirol pin, and the wheel and leg assembly from the right side of the axle shaft and retain for later use.
2. Install the cylinder mounting brackets (Part No. 522090) onto the right wheel leg assembly, using (4) 7/16-14 X 1" screws, lockwashers and nuts. See Figure 2, Page 6.
3. Install the woodruff key (Part No. 548371) into the keyway on the axle shaft, and slide the wheel and leg assembly back onto the axle. Secure with the spirol pin removed in Step 1.
4. Remove the (4) 7/16-14 X 1-3/4" screws securing the right frame arm (Part No. 521883) and cover to the frame (Part No. 545645). Retain hardware for later use.
5. Mount the cylinder pivot bracket (Part No. 545649) onto the frame arm using the original hardware. See Parts List, Page 17.
6. Install the hydraulic cylinder (Part No. 545787) in the appropriate holes on the cylinder pivot bracket and the wheel leg assembly, or the cylinder pivot bracket and the cylinder mounting brackets. See Figures 2 and 3, Page 6.

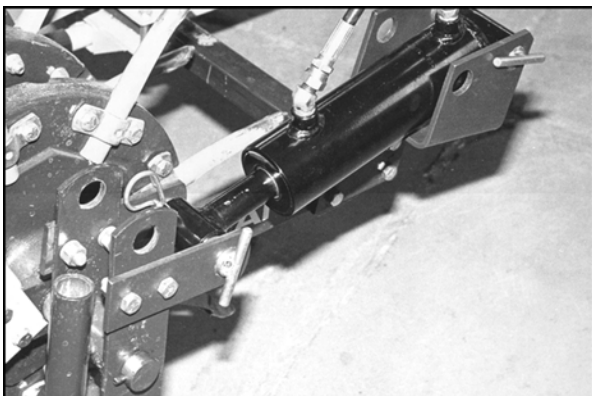
**NOTE:** The operator is responsible for acquiring the proper hoses and/or fittings that attach the hydraulic cylinder to the tractor directly to the cylinder, or the operator may install hydraulic fittings onto the cylinder.

For proper connection to the cylinder, use hoses or fittings with a 3/8-18 NPT. Fittings can be obtained from any local tractor dealer, or can be ordered through your Ryan dealer. See Parts List on Page 17 for appropriate fittings.

7. Install hydraulic hoses (not included with set) from tractor to cylinder, passing through the hose support. Raise and lower aerator to make sure hydraulic oil is circulated through entire system. Check for any loose or leaking connections and tighten or replace as necessary. Fill tractor hydraulic reservoir if necessary.

**NOTE:** For tractors with 700 p.s.i. (4,824 kPa), install the hydraulic cylinder using the front holes in the cylinder pivot bracket, and the holes of the cylinder mounting brackets. Figure 2.

For tractors with 1500 p.s.i. (10,341 kPa), install the hydraulic cylinder using the rear holes in the pivot mounting bracket, and the holes in the wheel and leg assembly. Figure 3.



**FIGURE 2**  
(For Tractors With 700 p.s.i. Hydraulics)  
1. Cylinder Mounting Bracket  
2. Wheel and Leg Assembly  
3. Front Hole Position on Pivot Bracket



**FIGURE 3**  
(For Tractors With 1500 p.s.i. Hydraulics)  
1. Rear Hole Position on Pivot Bracket  
2. Wheel and Leg Assembly

**MANUAL LIFT ACCESSORY****PART NO. 545654 (For Tow Behind Lawnaire Model 744860A)**

1. Remove the (2) 3/8-16 X 1-1/2" screws, securing the rear part of the cover to frame arm, on right side of aerator. Retain hardware for later use.
2. Install right stop assembly (Part No. 545675) to unit as shown in Illustration on Page 18. Secure stop with the original hardware.
3. Using the same procedure, install the left side stop (Part No. 645655).
4. Place the spring (Part No. 521880) between the uprights on the wheel leg. Insert the lock pin into the holes, passing lock pin through both leg uprights.
5. Pull the spring back and insert a cotter pin (Part No. 307976) through the hole in the lock pin. The cotter pin will be positioned between the spring and the leg upright. Repeat procedure on other side of unit.
6. To raise aerator, insert the lifting handle (Part No. 521892) into the tube on the wheel leg. Raise handle lowering wheel leg into a vertical position. Lock the locking pin into the hole on the stop bracket. Repeat on other side of unit.
7. To lower aerator, insert the lifting handle into the tube on the wheel leg. Push handle forward to relieve pressure on the locking pin. Pull pin out and raise the wheel, lowering the aerator. Repeat on opposite side of unit.
8. Replace lifting handle in tongue for storage. Insert pin (Part No. 521918) to secure lifting handle.

## AERATING LAWNNAIRE MODEL 744860A

### **WARNING**

**Underground utilities. Electrocutation, explosion, service disruption risk.**

**Before beginning any work, check with the local authorities for underground utility location and depth. Do not operate where there is any risk of contacting underground utilities. Contacting buried utilities could result in a service outage. Contacting buried electrical wires could result in electrocution. Contacting a buried gas line could result in an explosion.**

**This unit is not designed nor meant to be towed at speeds in excess of 10 MPH (16 Km/h).**

**Towing at excessive speeds will cause damage to frame and/or wheels. This type of damage will not be repaired under the terms of the warranty.**

**Before operating the aerator, check area to be aerated and remove any objects which may present a safety hazard or damage the aerator (rocks, cans, etc.).**

**To prevent injury, do not operate aerator without cover in place. Do not make adjustments or perform any maintenance while tractor engine is running.**

**Do not leave tractor unattended without stopping the engine.**

**NOTE:** Failure to lubricate aerating wheels can cause damage to axle, bushings and wheels.  
Never cross hard objects or surfaces (sidewalks, driveways, stepping stones, etc.) with tines down.  
Aerator should be raised completely out of the ground to avoid turf damage while turning.  
Do not back up when tines are in the ground or damage to the tines and clamps may occur.  
For maximum performance, a double set of tines may be mounted onto the aerating wheels. A longer screw is required for this application. To obtain this screw, order Part No. 311213.

1. Position tractor and aerator where you wish to begin aerating. On models with hydraulic lift, lower unit and begin aerating. On models with manual lift, use the lift handle (as stated in Step 7 on Page 7) to lower the aerator to the ground.
2. Tow Lawnaire over area to be aerated.
3. After completion of job, clean and service the aerator according to the following service instructions.

**⚠ WARNING**

**DO NOT** use tractor hydraulics to support the aerator while servicing. Hydraulic lines may rupture causing unit to fall suddenly.

**When replacement parts are required, use genuine Ryan parts or parts with equivalent characteristics including type, strength and material. Failure to do so may result in product malfunction and possible injury to the operator and/or bystanders.**

**LUBRICATION**

1. Wipe off grease fittings before and after greasing of aerating wheels. Lawnaire Model 544859A has six grease fittings; Lawnaire Models 544860A and 544876A have eight grease fittings.
2. Grease aerating wheels after every four hours of use. Use a standard lithium based grease.
3. Grease transport wheels daily (Model 544860)

**TINE WHEEL REPLACEMENT  
MODEL 544860A**

1. Attach aerator to tractor for stability.
2. Raise unit and place jackstands under each frame arm and lower aerator, keeping the transport wheels and the tine wheels off the floor.
3. If aerator has the hydraulic lift accessory, disconnect the hydraulic cylinder from the wheel leg assembly.
4. Remove spirol pin, wheel leg assembly and key from axle shaft, on side closest to wheel to be repaired. (Units with hydraulic lift will have a key at each end of axle shaft.)
5. Pull axle out until tine wheel to be replaced or serviced is free. Note the location of spacers as tine wheels are removed.
6. Remove any surface rust from the axle shaft to prevent damage to the seals.
7. Apply a lithium based grease to the axle shaft and to the lip of the seals before reassembling. Assemble in the reverse order of removal.
8. Replace spirol pin with new pin, Part No. 64176-09.

## **STORAGE INSTRUCTIONS**

Thoroughly clean all tines, inside and out, after aerating is completed. A light coating of oil sprayed onto the tines or blades will help prevent rust and ensure proper coring the next time the unit is put into service.

Unit should be stored on boards to protect tines or blades from rust and damage. Store in a dry location.

Lubrication before long storage periods will help prevent moisture build-up in the lubrication cavities.

When bringing unit out of storage, check for loose hardware and damaged parts. Tighten and replace as needed.

## **FOR MODELS EQUIPPED WITH HYDRAULIC LIFT ACCESSORY**

Check hydraulic cylinder for leaks and replace seal kit if needed. To obtain seal kit, order Part No. 884597.

Check the hydraulic hose connections for tightness and check the hoses for any wear or damage. Tighten and replace as necessary.

**NOTE:** Proper storage and maintenance will extend the usage and performance of the unit.

**Specifications**

**Chassis:**..... 1-1/2" (38 mm) X 3/16" (4.77 mm) wall tube

**Hitch:** ..... Tow behind; pin and clevis hitch

**Tires:**..... Semi-Pneumatic 10.25 X 3.25

**Wheels:**..... Aerating; Cast iron with sintered bronze bushing

**Net Weight:**..... 500 lbs. (227 kg)

**Dimensions:**

**Width:** ..... 46" (1.168 mm)

**Height:** ..... 31" (787 mm)

**Length:** ..... 68-1/2" (1,740 mm)

**Aerating Width:**..... 36" (914mm)

**Aerating Depth:**..... Up to 5" (127mm)

**Aerating Pattern:** ..... Approximately 6" X 6" (152mm X 152mm)

**Tines:** ..... See accessories section, Page 13

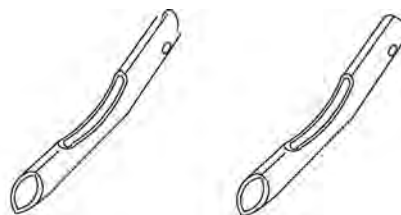
**Lubrication** ..... Pressure grease fittings. Refer to service section on Page 11

**Conforms to :** ..... Directive 98/37/EC

## **515196 - 1/2" Coring Tine**

## **515197 - 3/4" Coring Tine**

Use 1/2" or 3/4" coring tines for thorough aeration programs in the Spring and Fall. Soil cores up to 4" (102mm) in length can be removed with minimal surface disturbance letting in air, moisture and fertilizer to the root zone. The cores on the surface quickly disintegrate forming top dressing for an excellent seed bed. Using this system, rain water run-off is minimized and extra moisture is held down in the root zone.

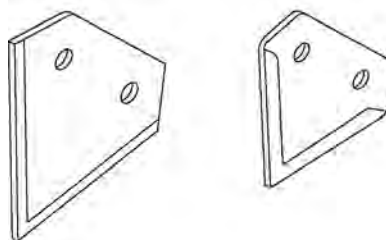


## **521155 - Deep Slicing Knife**

## **515193- Shallow Slicing Knife**

Use for aeration and renovation programs during all seasons. Slicing knives control thatch by cutting through grass runners and also have the advantage of no surface clean up after aerating. Knives are especially helpful in that they do not place buried seeds of noxious weeds on the surface where they can germinate.

Slicing knives are especially recommended for athletic fields. Due to the "invisible" slices, moisture, air and fertilizer can be trapped while not creating hazardous playing conditions for athletes.



## **520404- Aerating Tine Kit**

Use for turf building and Fall renovation programs. These tines will thoroughly open up the soil by penetrating deep into the ground bringing up large amounts of soil, which then becomes top dressing.



# PARTS SECTION

FIGURE 1

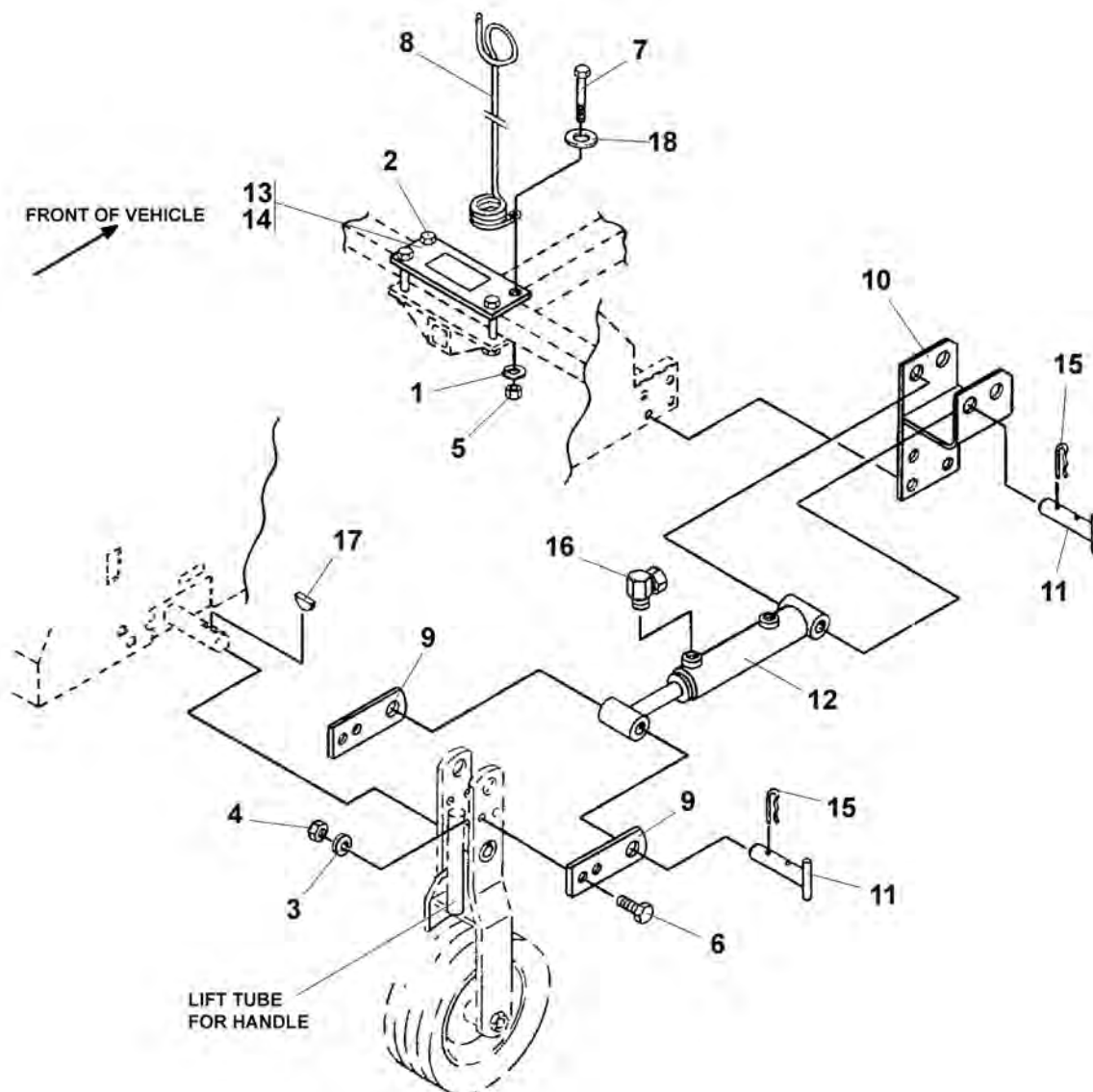


FIGURE 1

ITEM	PART NO.	DESCRIPTION	QTY	ITEM	PART NO.	DESCRIPTION	QTY
1-1	64006-03	LOCKWASHER 3/8	4				
1-2	64123-82	SCREW-3/8-16 X 2-1/2	3				
1-3	64006-06	LOCKWASHER-7/16	4				
1-4	304364	NUT-7/16-14	4				
1-5	64025-05	NUT-3/8-16	4				
1-6	64123-39	SCREW-7/16-14 X 1	4				
1-7	64123-75	SCREW-3/8-16 X 3	1				
1-8	521905	SUPPORT-HOSE	1				
1-9	522090.7	BRKT-CYLINDER MOUNT	2				
1-10	545649.7	PIVOT-CYLINDER	1				
1-11	2703422	PIN-LOCK	2				
1-12	545787	CYLINDER-HYDRAULIC	1				
1-13	547741	PLATE-CLAMPING	1				
		(INCLUDES ITEM 14)					
1-14	521921	DECAL-INSTRUCTION	1				
1-15	64168-5	PIN-HAIR	2				
1-16	548390	FITTING-90 DEG. HYD 3/8-18	2				
1-17	64164-35	KEY-WOODRUFF 1/4 X 2-1/8	1				
1-18	64163-53	WASHER-SPECIAL	1				
1-19 *	884597	SEAL KIT-HYD CYLINDER	A/R				

\* NOT ILLUSTRATED

FIGURE 2

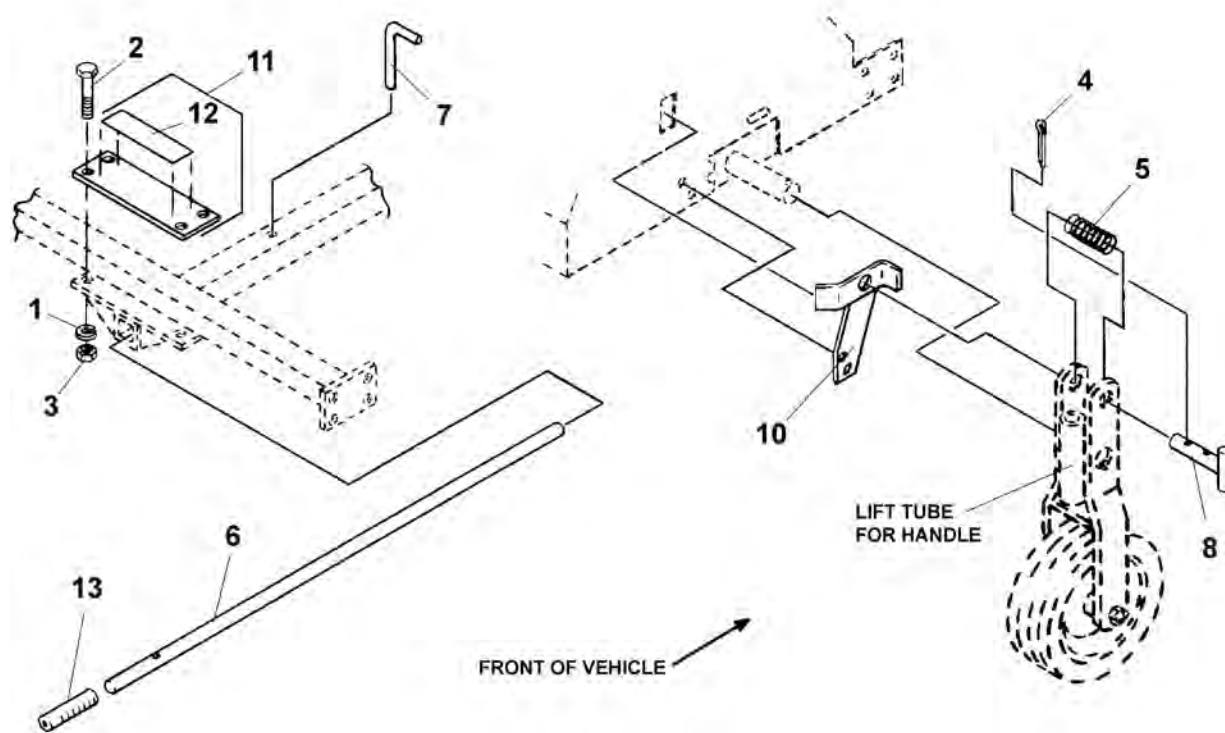
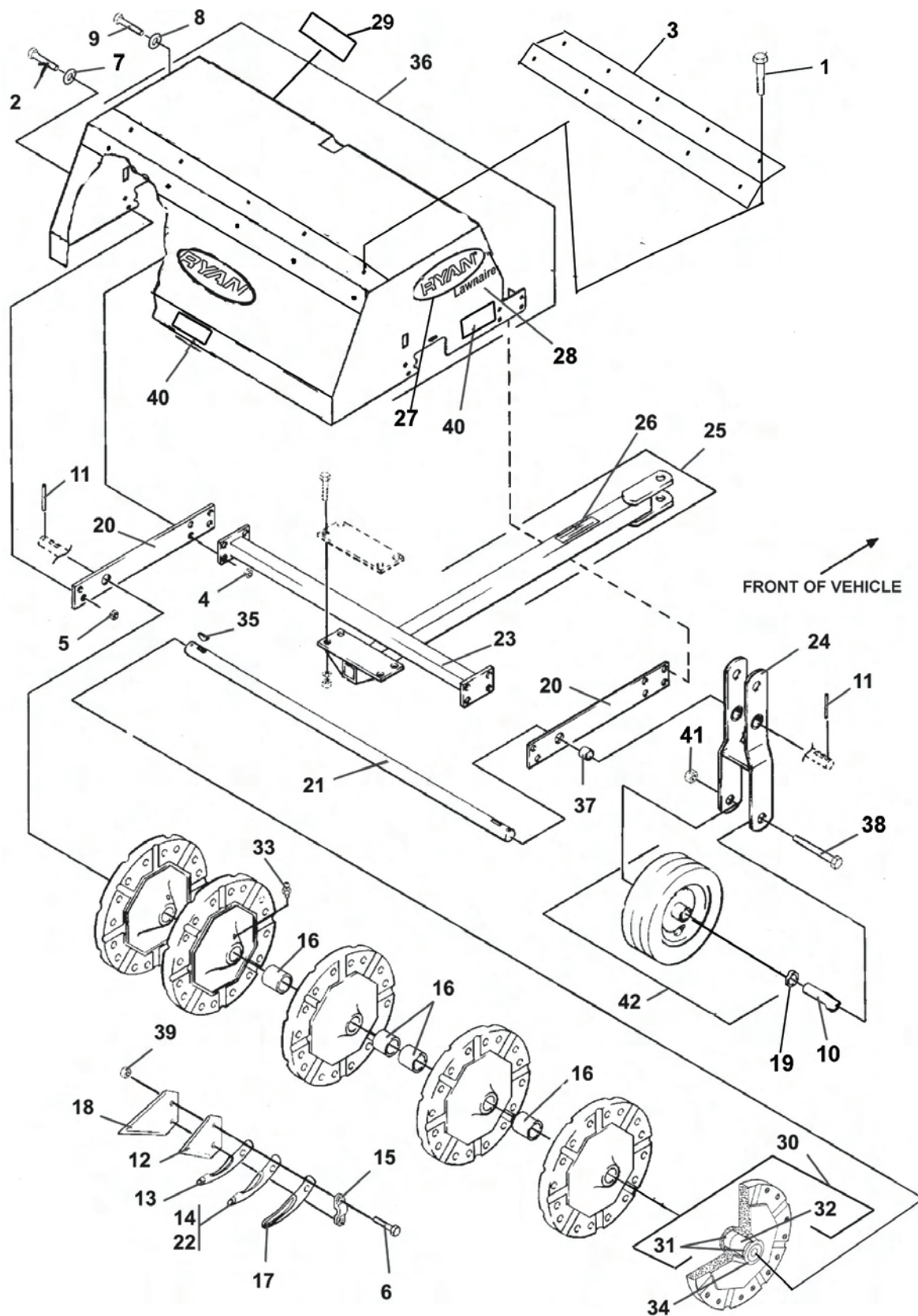


FIGURE 2

ITEM	PART NO.	DESCRIPTION	QTY	ITEM	PART NO.	DESCRIPTION	QTY
2-1	64006-03	LOCKWASHER-3/8	4				
2-2	64123-82	SCREW-3/8-16 X 2-1/2	4				
2-3	64025-05	NUT-3/8-16	4				
2-4	02-CP0510	PIN-COTTER 5/32 X 1-1/4	2				
2-5	521880	SPRING	2				
2-6	521892.7	HANDLE-LIFT	1				
2-7	521918	PIN-RETAINING	1				
2-8	2703422	PIN-LOCK	2				
2-9 *	545655.7	STOP-LEFT	1				
2-10	545675.7	STOP-RIGHT	1				
2-11	547741	PLATE-CLAMPING (INCLUDES ITEM 12)	1				
2-12	521921	DECAL-INSTRUCTION	1				
2-13	78011-1a	GRIP-HANDLE	1				

\* NOT ILLUSTRATED

FIGURE 3



# LAWNNAIRE

FIGURE 3

ITEM	PART NO.	DESCRIPTION	QTY	ITEM	PART NO.	DESCRIPTION	QTY
3-1	4163541.2	COVER-FILLER, 36"	1	3-31	515184	BUSHING	2
3-2	64123-70	SCREW-3/8-16 X 1-1/2	4	3-32	4163242	SPACER	1
3-3	64152-23	SCREW-1/4-20 X 3/8 LG SP	10				
3-4	64229-04	NUT-7/16-14	8	3-33	548230	FITTING-LUBRICATION	6
3-5	64268-03	NUT-3/8-16	19	3-34	548256	SEAL-OIL	12
3-6	64123-100	SCREW-3/8-16 X 2-1/4	96	3-35	548371	KEY-WOODRUFF 1/4 X 1/8	2
3-7	64163-61	WASHER-3/8	4	3-36	4163401	COVER-ASSY	1
3-8	64163-43	WASHER-7/16	8			(INCLUDES ITEMS 1, 3, 27, 28, 29, & 40)	
3-9	64123-178	SCREW-7/16-14 X 1-3/4	8				
3-10	50-062	SPACER	2	3-37	827248	SPACER	2
3-11	64176-09	PIN-SPIROL 1/4 X 1-3/4	2	3-38	64123-130	BLT-HEX 3/8-16X5-1/2	2
3-12 *	515193	KNIFE-SHALLOW SLICING	48	3-39	64141-4	NUT-3/8-16 FLANGELOCK	96
3-13 *	515196	TINE-1/2 (13mm) HEAVY WALL	48	3-40	4163695	LABEL-CHF HOR EU	3
3-14 *	515197	TINE-3/4 (19mm) HEAVY WALL	48	3-41	64229-03	LOCKNUT-NYLON 3/8-16	2
3-15	515198	CLAMP-TINE	48	3-42	53-186	WHEEL	2
3-16	519959	SPACER	4				
3-17 *	520404	TINE-AERATING	48				
3-18 *	521155	KNIFE-DEEP SLICING	48				
3-19	64163-16	WASHER	12				
3-20	521883.7	ARM-FRAME	2				
3-21	521887	SHAFT-AXLE	1				
3-22	522361	TINE-3/4 (19mm)	48				
		(STANDARD, SUPPLIED WITH UNIT)					
3-23	4163369.7	FRAME	1				
3-24	4163371.7	LEG-WHEEL	2				
3-25	545677	HITCH	1				
3-26	4163818	LABEL-HITCH, TONGUE EU	2				
3-27	4161123	LABEL-RYAN OVAL-LARGE	3				
3-28	4130431	LABEL-LAWNNAIRE	2				
3-29	4163795	LABEL-OP/UTILITY WU	1				
3-30	546048	WHEEL-TINE ASSY	6				
		(INCLUDES ITEMS 31 & 32)					

**\*OPTIONAL TINES AND KNIVES**

**SCHILLER GROUNDS CARE, INC.**  
**ONE BOB-CAT LANE**  
**P.O. BOX 469**  
**JOHNSON CREEK, WI 53038**  
**920-699-2000**  
**[www.schillergc.com](http://www.schillergc.com)**

