



**SELF-PROPELLED WALK BEHIND DRUM
TYPE AERATOR**



MODELS:

744908B

LAWNAIRE IV 4HP HONDA

744909C

LAWNAIRE IV 6HP BRIGGS & STRATTON

744910B

LAWNAIRE V 4HP HONDA

744911C

LAWNAIRE V 6HP BRIGGS & STRATTON



PARTS MANUAL

MAN 4164756

Rev. A 01-2010

Original Language Instructions

CALIFORNIA

Proposition 65 Warning

Diesel engine exhaust and some of its constituents are known to the State of California to cause cancer, birth defects and other reproductive harm.

⚠ WARNING

The engine exhaust from this product contains chemicals known to the State of California to cause cancer, birth defects or other reproductive harm.

Californie Proposition 65 Avertissement

Les échappements des moteurs diesel et certains de leurs composés sont reconnus par l'Etat de Californie pour être cancérigènes, provoquer des défauts congénitaux et d'autres dangers en matière de reproduction.

⚠ AVERTISSEMENT

L'émission du moteur de ce matériel contient des produits chimiques que l'Etat de Californie considère être cancérigènes, provoquer des défauts congénitaux et d'autres dangers en matière de reproduction.

**California Advertencia
de la Proposicion 65**

El estado de California hace saber que los gases de escape de los motores diesel y algunos de sus componentes producen cáncer, defectos de nacimiento y otros daños en el proceso de reproducción humana.

⚠ ADVERTENCIA

El estado de California hace saber que los gases de escape de este producto contienen productos químicos que producen cáncer, defectos de nacimiento y otros daños en el proceso de reproducción humana.

CALIFORNIA

Proposition 65 Warning

Battery posts, terminals, wiring insulation, and related accessories contain lead and lead compounds, chemicals known to the State of California to cause cancer and birth defects or other reproductive harm.
WASH HANDS AFTER HANDLING.

IMPORTANT MESSAGE

Thank you for purchasing this Schiller Grounds Care, Inc. product. You have purchased a world class product, one of the best designed and built anywhere.

This machine comes with Operator's and Parts Manuals containing safety, operation, parts, maintenance and service information. The useful life and good service you receive from this machine depends to a large extent on how well you read and understand this manual. Treat your machine properly, lubricate and adjust it as instructed, and it will give you many years of reliable service.

Your safe use of this Schiller Grounds Care, Inc. product is one of our prime design objectives. Many safety features are built in, but we also rely on your good sense and care to achieve accident-free operation. For best protection, study the manual thoroughly. Learn the proper operation of all controls. Observe all safety precautions. Follow all instructions and warnings completely. Do not remove or defeat any safety features. Make sure those who operate this machine are as well informed and careful in its use as you are.

See a Schiller Grounds Care, Inc. dealer for any service or parts needed. Schiller Grounds Care, Inc. service ensures that you continue to receive the best results possible from Schiller Grounds Care, Inc. products. You can trust Schiller Grounds Care, Inc. replacement parts because they are manufactured with the same high precision and quality as the original parts.

Schiller Grounds Care, Inc. designs and builds its equipment to serve many years in a safe and productive manner. For longest life, use this machine only as directed in the manual, keep it in good repair and follow safety warnings and instructions. You'll always be glad you did.

Schiller Grounds Care, Inc.
One Bob Cat Lane
Johnson Creek, WI 53038-0469

TABLE OF CONTENTS

FIGURES

PAGE

SAFETY		2-6
ASSEMBLY/SET-UP INSTRUCTIONS		7, 8
SERVICE		9
TRANSPORTING		10
STORAGE		11
SPECIFICATIONS		12
PARTS SECTION		13
FRAME GROUP	FIGURE 1	14, 15
GUARDS	FIGURE 2	16, 17
MAIN GROUP-LAWNIRE IV	FIGURE 3	18, 19
MAIN GROUP-LAWNIRE V	FIGURE 4	20, 21
HANDLE GROUP	FIGURE 5	22, 23
BRAKE GROUP	FIGURE 6	24, 25
TINE WHEEL GROUP	FIGURE 7	26, 27
DRUM GROUP	FIGURE 8	28, 29
DECAL GROUP	FIGURE 9	30, 31

NOTICE !!!

Unauthorized modifications may present **extreme** safety hazards to operators and bystanders and could also result in product damage.

Schiller Grounds Care, Inc. strongly warns against, rejects and disclaims any modifications, add-on accessories or product alterations that are not designed, developed, tested and approved by Schiller Grounds Care, Inc.'s Engineering Department. Any Schiller Grounds Care, Inc. product that is altered, modified or changed in any manner not specifically authorized after original manufacture—including the addition of “after-market” accessories or component parts not specifically approved by Schiller Grounds Care, Inc.—will result in the Schiller Grounds Care, Inc. Warranty being voided.

Any and all liability for personal injury and/or property damage caused by any unauthorized modifications, add-on accessories or products not approved by Schiller Grounds Care, Inc. will be considered the responsibility of the individual(s) or company designing and/or making such changes. Schiller Grounds Care, Inc. will vigorously pursue full indemnification and costs from any party responsible for such unauthorized post-manufacture modifications and/or accessories should personal injury and/or property damage result.



This symbol means:
ATTENTION!
BECOME ALERT!

Your safety and the safety of others is involved.

Signal word definitions:

The signal words below are used to identify levels of hazard seriousness. These words appear in this manual and on the safety labels attached to Schiller Grounds Care, Inc. machines. For your safety and the safety of others, read and follow the information given with these signal words and/or the symbol shown above.

DANGER

DANGER indicates an imminently hazardous situation which, if not avoided, **WILL** result in death or serious injury.

WARNING

WARNING indicates a potentially hazardous situation which, if not avoided, **COULD** result in death or serious injury.

CAUTION

CAUTION indicates a potentially hazardous situation which, if not avoided, **MAY** result in minor or moderate injury. It may also be used to alert against unsafe practices or property damage.

CAUTION

CAUTION used without the safety alert symbol indicates a potentially hazardous situation which, if not avoided, **MAY** result in property damage.



MODEL NUMBER: This number appears on sales literature, technical manuals and price lists.

SERIAL NUMBER: This number appears only on your mower. It contains the model number followed consecutively by the serial number. Use this number when ordering parts or seeking warranty information.

PREPARING FOR SAFE OPERATION

Operator preparation and training

Read the Operation & Safety Manual

- If an operator or mechanic cannot read, it is the owner's responsibility to explain this material to them. If any portion of this material is unclear, contact your factory representative for clarification.
- Become familiar with the safe operation of the equipment, operator controls and safety signs. Know how to stop the engine and attachments quickly in an emergency. Do not operate or allow another person to operate this machine if there are any questions about safety.
- All operators and mechanics should be trained. The owner is responsible for training the users.
- Wear appropriate clothing, including long trousers and safety goggles or safety glasses with side shields when operating. Wear substantial footwear. Do not operate barefoot or wearing open sandals. Long hair, loose clothing or jewelry may get tangled in moving parts.
- Wear appropriate hearing protection.
- Never allow children, unskilled or improperly trained people to operate this equipment. Local regulations can restrict the age of the operator.
- Keep warning labels and this operator's manual legible and intact. Replacement labels and manuals are available from the factory.
- Do not operate machine while under the influence of drugs or alcohol or any other condition of impairment.
- The owner/user can prevent and is responsible for accidents or injuries occurring to themselves, other people or property.



Site preparation and circumstances

- Evaluate the terrain to determine what accessories and attachments are needed to properly and safely perform the job. Only use accessories and attachments approved by the manufacturer.
- Clear the area to be aerated of objects such as rocks, toys, wire or other debris that may be picked up or thrown by the machine.
- Be sure the area is clear of pets and people, especially young children. Never assume they will remain where you last saw them. Stop the machine if any enter the area.
- Operate only in daylight or in good artificial light.

Machine preparation

- Check operator presence interlock system and brake operation. Adjust or have any problems repaired before using.
- Do not tamper with or defeat safety devices. Keep guards, shields and interlock safety devices in place and in proper working condition. They are for your protection.
- Keep all fasteners such as nuts, bolts and pins well secured.
- Visually inspect tines, tine bolts and the drum assembly for wear or damage. Replace worn or damaged tines and bolts.
- Verify that machine and attachments, if any, are in good operating condition.
- Do not engage tines until ready to aerate.

OPERATING SAFELY

In general

- Use extra care when loading or unloading the machine into a trailer or truck.
- Slow down and use caution when making turns and crossing roads and sidewalks. Stop tines if not aerating.
- Do not run the engine in an enclosed area where dangerous carbon monoxide fumes can collect.
- Stop operation if someone approaches.
- Keep all guards in place when operating.
- Do not turn sharply. Use extreme caution when pulling machine towards you.
- Use counter-weight(s) or wheel weights when suggested in the operator's manual.
- Never leave a running machine unattended. Always release drive and stop engine before leaving the operator's position.

Starting

- Start only according to instructions in this manual or on the machine.
- Before attempting to start the engine, make sure:
 - the traction clutch is disengaged.
- When starting the engine, make sure hands and feet are clear of the blades.
- Do not change engine governor settings or overspeed the engine. Operating the engine at excessive speed can increase the hazard of personal injury.

Interrupting operation

- Before leaving the operator's position:
 - Park on level ground.
 - Disengage the traction clutch.
 - Shut off the engine.
- Raise the tine:
 - when not aerating;
 - for transport;
 - when crossing surfaces other than grass.
- Disengage the traction clutch, stop the engine, :
 - before refueling;
- Disengage the traction clutch, stop the engine, allow the tines to come to a complete stop, and disconnect the spark plug wire:
 - before clearing blockages;
 - before checking, cleaning or working on the machine;
 - before having maintenance or repairs performed;
 - after striking a foreign object. Inspect the machine for damage and have repairs made before restarting;
 - if the machine begins to vibrate abnormally: shut off machine immediately. Inspect and have repairs made as needed before restarting;
- except for repairs or adjustments as specifically noted, such as for carburetor adjustment, where the engine must be running. Keep hands and feet clear of moving parts in these circumstances.
- Reduce the throttle setting during engine shut-down and, if the engine is provided with a shut-off valve, turn the fuel off at the conclusion of operation.

MANEUVERING SAFELY

In general

- Slow down before turning.
- Be aware when approaching blind corners, shrubs, trees, tall grass or other objects that may obscure vision.



WARNING

Slope Operation

- Slopes are a major factor in loss-of-control and tipover accidents that sometimes lead to severe injury or death. All slopes require extra caution.
- Before operating on slopes, evaluate the risks involved.
- Do not operate on slopes if uneasy or uncertain. Ultimate responsibility for safe operation on slopes rests with the operator.
- Do not operate steep slopes.
A slope is too steep if:
 - The machine must be crabbed (turned partially sideways uphill) to drive across the slope.
 - The machine turns downhill going across the slope.
 - You are uneasy about being on the slope
- With walk behind machines, operate across slopes, not up and down.
- Avoid starting or stopping on a slope. If wheels lose traction, disengage the traction clutch and proceed slowly straight down the slope.
- Keep all movement on the slopes slow and gradual. Do not make sudden changes in speed or direction.
- Do not turn on slopes unless necessary, and then turn slowly and downhill when possible.
- Do not operate near dropoffs, ditches or embankments. The machine could suddenly turn over if a wheel runs over the edge or an edge caves in.
- Follow the manufacturer's recommendations for wheel weights or counterweights to improve stability.

MAINTENANCE AND STORAGE SAFETY

In general

- Maintain machine according to manufacturer's schedule and instructions for maximum safety and best results.
- Park machine on level ground.
- Never allow untrained personnel to service machine.
- Guards should only be removed by a qualified technician for maintenance or service. Replace when work is complete.
- Adjust or repair only after the engine has been stopped and the tines have quit rotating.
- Replace parts if worn, damaged or faulty. For best results, always replace with parts recommended by the manufacturer.
- Disconnect spark plug wire(s) before making any repairs.
- Do not dismantle the machine without releasing or restraining forces which may cause parts to move suddenly.
- Provide adequate support, e.g. jackstands for lifted machine or parts if working beneath.
- Do not put hands or feet near or under rotating parts.
- Clean up spilled oil or fuel thoroughly.
- Replace faulty mufflers.
- To reduce fire hazards, keep the engine, muffler, and fuel storage area free of grass, leaves, debris buildup or grease.

Tines

- Tines are sharp and can cut. Use extra caution when handling. Wear appropriate personal protective equipment.
- Only replace tines. Never straighten or weld them.
- Keep other persons away from tines.

WARNING



WARNING



Fuel

- Petrol (Gasoline) and diesel fuels are flammable; petrol (gasoline) vapors are explosive. Use extra care when handling.
- Store only in containers specifically designed for fuel.
- When refueling or checking fuel level:
 - Stop the engine and allow to cool;
 - Do not smoke;
 - Refuel outdoors only;
 - Use a funnel;
 - Do not overfill;
 - If fuel is spilled, do not attempt to start the engine until the spill is cleaned up and vapors have cleared.
 - Replace caps on fuel containers and tanks securely.

Sparks from static electricity can start fires or cause explosions. Flowing fuel can generate static electricity. To prevent static electricity sparks:

- Keep fuel containers electrically grounded.
- Do not fill containers in a vehicle or on a truck or trailer bed with a plastic liner. Fill containers on the ground away from the vehicle.
- When practical, remove gas powered equipment from the truck or trailer and refuel it on the ground. If equipment must be refueled on the truck or trailer, refuel from a portable container rather than a dispenser nozzle.
- Keep the dispenser nozzle in contact with the rim of the fuel tank or container opening until fueling is complete. Do not use a nozzle lock-open device.

Storage

- Stop the engine and allow to cool before storing
- Drain the fuel tank outdoors only.
- Store fuel in an approved container in a cool, dry place
- Keep the machine and fuel containers in a locked storage place to prevent tampering and to keep children from playing with them.
- Do not store the machine or fuel container near appliances with an open flame such as a water heater or other appliance with a pilot light.
- Keep petrol (gasoline) storage area free of grass, leaves and excessive grease to reduce fire hazard.
- Clean grass and debris from cutting units, drives, mufflers and engine to help prevent fires.

GENERAL NOTE: FRONT, REAR, RIGHT HAND AND LEFT HAND REFERENCES BELOW ARE WITH RESPECT TO AN OPERATOR AT THE CONTROLS.

UNPACKING

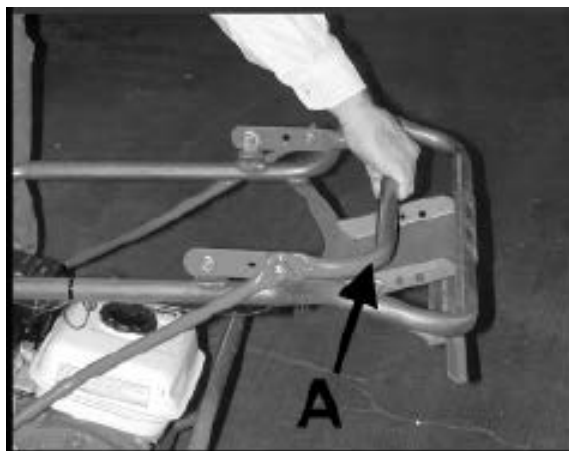
Unpacking the aerator entails securing the handle and rolling the unit off the shipping pallet.

1. Cut the banding securing the aerator to the pallet

⚠ WARNING

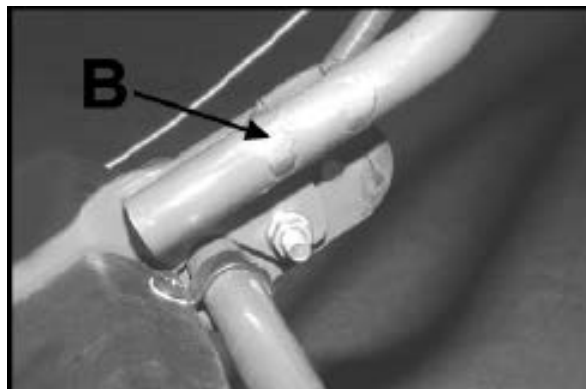
Banding is under tension and may snap back when cut. Wear eye protection and stay clear when cutting the band.

2. Unfold handle by pulling on the transport lift handle **A**.



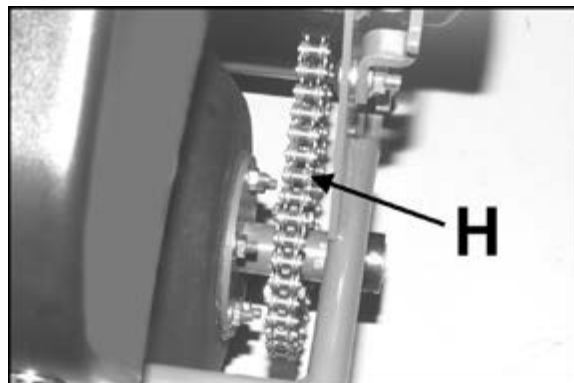
FOR LAWNNAIRE V MODELS

1. Bolt the handle **B** in place, as shown.
2. Pull up on the transport lift handle **C** to raise the aerator to the transport position.
3. Carefully roll the unit off the pallet.



LUBRICATION & FUEL

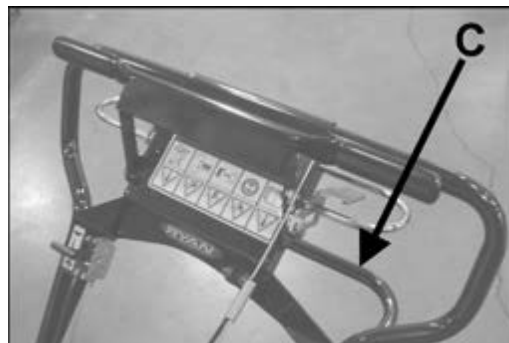
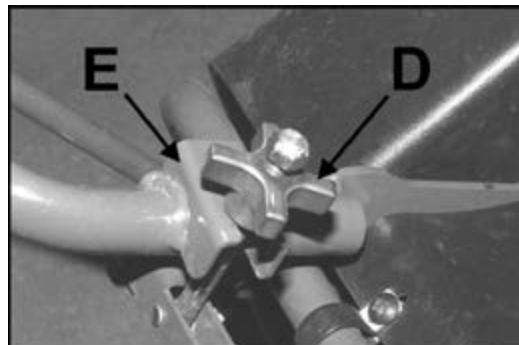
1. Check the engine oil level. Top off if necessary. See engine manual for oil requirements.
2. Lubricate the roller chain **H** with Lubriplate #13563 or equivalent.
3. Fill the gas tank with fresh, clean gasoline.



FOR LAWNAIRE IV MODELS

1. Flip the handle locking knobs **D** up into position over the handle bracket **E** and tighten. **HAND TIGHTEN ONLY!**
2. Pull up on the transport lift handle **C** to raise the aerator to the transport position.
3. Roll the unit off the pallet.

NOTE: If the folding handle will not be used, bolt the handle in place. See instructions in the preceding section, for Lawnaire V Models.

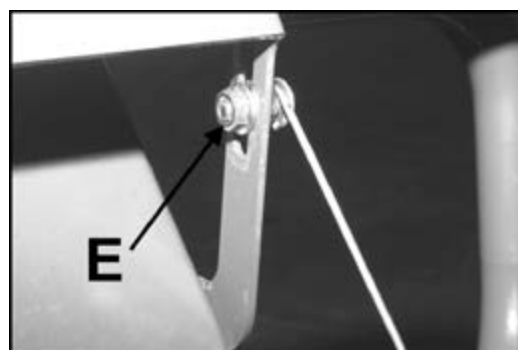
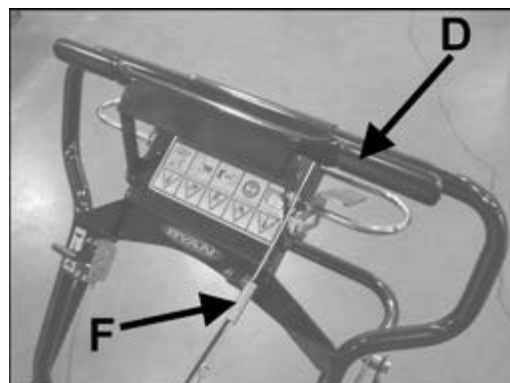


CLUTCH CABLE

The clutch cable is adjusted prior to shipping; however, it should be checked before the unit is put into service.

1. Pull the clutch control handle **D** back and down. Make sure the idler engages the belt.
2. Release the clutch control handle **D** and make sure the belt disengages completely.
3. Spring **F** should extend 1/8" 1/4" (3-6 mm) when the clutch control handle **D** is pulled back..
3. If adjustment is necessary, loosen nut **E** on the clutch spring hardware and adjust its position in the slot of the clutch lever.

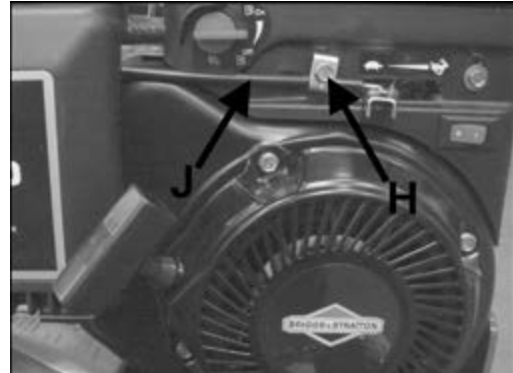
NOTE: Spring extension should not exceed 1/4" (6 mm).



THROTTLE CABLE- The throttle cable is adjusted prior to shipping; however, it should be checked before the unit is put into service. The throttle control should freely move in a full range of motion forward and backward. If necessary, the throttle cable can be adjusted as follows:

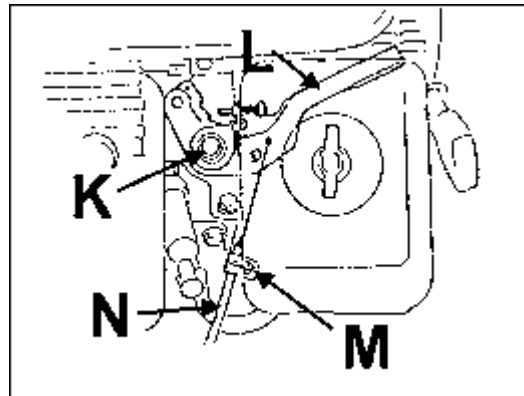
FOR BRIGGS AND STRATTON ENGINES:

2. Loosen the casing clamp screw **H**.
3. Push throttle lever all the way forward, then back off 1/16" - 1/8" (1.5 - 3 mm).
4. Push throttle cable casing **J** through casing clamp until fully advanced.
5. Tighten casing clamp screw **H**.



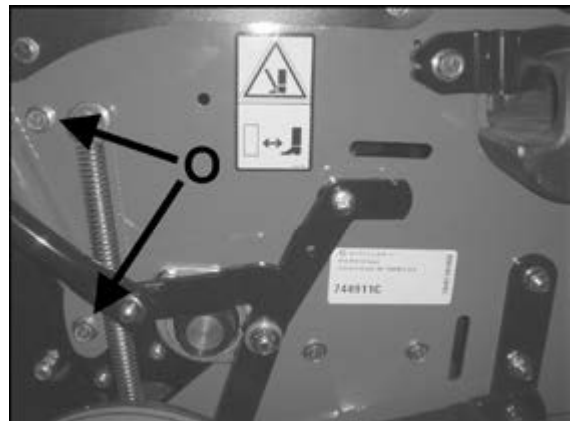
FOR HONDA ENGINES:

1. Loosen the throttle lever friction nut **K** enough to allow free movement of the throttle lever **L**.
2. Loosen throttle cable casing clamp **M**.
3. Push throttle lever all the way forward, then back off 1/16" - 1/8" (1.5 - 3 mm).
4. Pull throttle cable casing **N** through casing clamp until fully back.
5. Tighten casing clamp screw **M**.



REAR GUARDS

1. The two pieces of rear guarding are pre-assembled. Mount the guarding inside the frame using four (4) 5/16-18X1/2" flange bolts **O**.



MAINTENANCE

WARNING

Tines:

- Replace damaged or broken tines.
- Do not weld or straighten tines.
- Clean tines after use, inside and out.
- Apply a light coat of oil to tines to prevent rust.

Engine:

- With the engine in a level position check oil levels in the engine and gear reduction case. Add if required.

Lubrication:

- Grease the idler pivot and wheel bearings at the start of the season and every 25 hours.
- Keep roller chain clean and in proper running order. Lubricate with Lubriplate #13563 or equivalent at start of the season and every 25 hours.

ADJUSTMENTS

WARNING

Clutch Adjustments:

- The clutch cable spring should be extended 1/8"
- 1/4" (3 - 6mm) when the clutch is engaged.

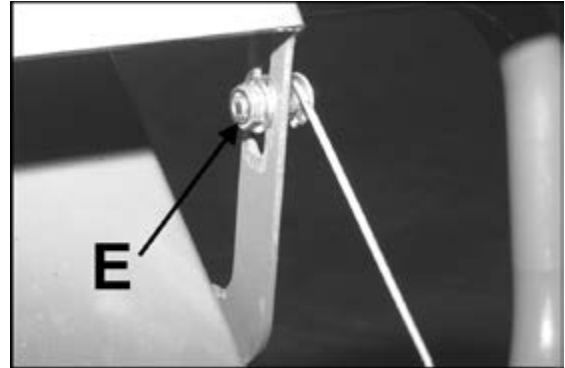
TO ADJUST: Loosen the nut E at the clutch cable mounting point on the clutch control handle. Adjust the position as needed.

Chain:

- The roller chain should have 1/8" - 1/4" (3 - 6mm) deflection at the center point between the upper idler and water drum sprockets.

TO ADJUST: Loosen the mounting bolt on one of the movable idler sprockets and slide in its slot until the desired tension is reached. Tighten the bolt. Note there are two (2) movable sprockets. If one does not provide sufficient take-up, use the other.

NOTE: Do not over tighten the chain. Excessive chain tension will reduce chain and bearing life. It can also lead to fatigue failure of the frame.



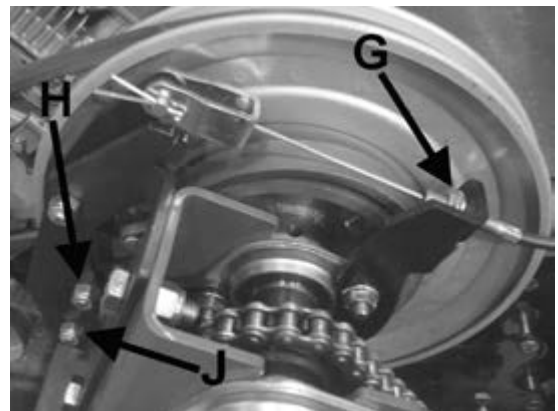
Brake Adjustments:

Note: The plastic cover must be removed from the left side of the machine to make adjustments.

When the brake is applied, the unit should stop quickly. The brake should stop the water drum and tine wheel from turning. When the brake is released the drive system should turn freely with little or no drag on the pulley drum.

TO ADJUST: Loosen the cable nuts **G** and move the cable to the right for more braking force, or to the left for less braking force. Tighten nuts.

ADDITIONAL ADJUSTMENT: If there is not enough adjustment at the cable nuts **G**, the front brake band mounting plate can be rotated by loosening the nut at **H** and removing the nut at **J**. Move the carriage bolt at **J** so the square neck under the head is in a new position (overlapping square holes) in the brake band mounting plate.

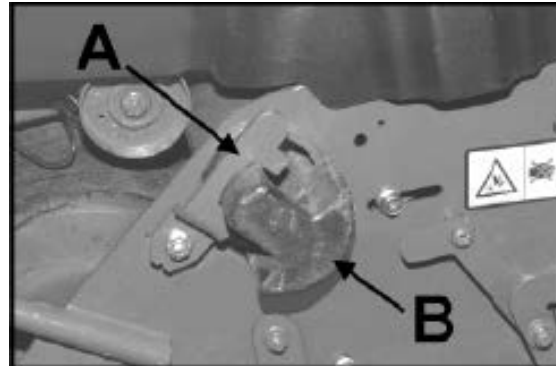


TRANSPORTING

Removing the cast weights and draining the water drum will decrease the weight for easier loading on a vehicle or trailer.

If the Ryan tote trailer will be used to transport the unit, the two cast weights must be removed from the aerator frame and a locking shaft installed in their place.

To remove the weights, pull up on the latch **A** securing the weights **B** and slide the weights out.



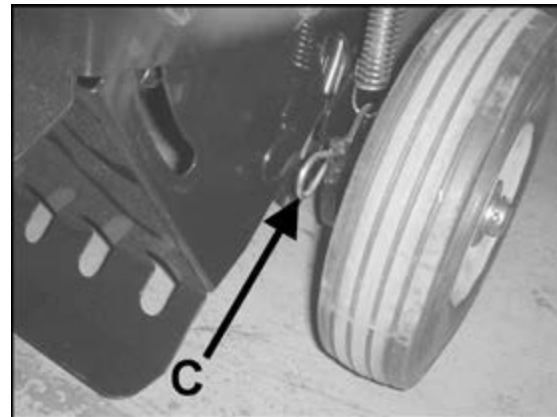
CAUTION

Use caution when removing the cast weights. Each weight is approximately 22 lbs.

NOTE: Close the fuel shut off valve before transporting the unit.

When manually transporting the machine for short distances:

- Pull up on the transport lift handle so that the tines are raised.
- Pull back on the clutch control handle (bail) to engage the drive. The water drum will propel the machine forward.



REMOVABLE TRANSPORT WHEELS

The rear wheels of the Lawnaire V are removable for transporting the aerator through fence gates.

With the wheels removed the Lawnaire V will pass through a 32 inch opening.

With the engine off, lower the aerator so that the tines are on the ground and the wheels are off the ground. Remove hair pins **C** from the axles. Slide wheels and axles out of transport frame.

Lift up on the aerator handle so the tines are off the ground. With the tines off the ground, push the aerator through the gate on the front drum. Once on the other side of the gate, reinstall the wheels.

STORAGE INSTRUCTIONS

WARNING

To prevent possible explosion or ignition of vaporized fuel, do not store equipment with fuel in tank or carburetor in an enclosure with open flame (for example, a furnace or water heater pilot light).

Before the equipment is put in to storage for any period exceeding 30 days, the following steps should be taken.

1. Drain all fuel from the fuel tank and fuel lines.
2. Start the engine and run until all the fuel is used from the carburetor float bowl.
3. While the engine is still warm, drain the crankcase oil and refill with the proper weight oil corresponding to the season the equipment will next be used.
4. Remove the spark plug and squirt a small amount of engine oil into the cylinder. Turn the engine over a few times to distribute the oil.
5. Drain the water drum.

NOTE: Always drain the water drum for winter storage. Freezing water can rupture the drum.

6. Grease the clutch pivot fitting and wheel bearings.
6. Lubricate the chain.

To put the equipment into service after an extended period of storage:

1. Check for loose parts and tighten if necessary.
2. Check for cracked or broken tines and replace as necessary.
3. Fill the fuel tank with clean, fresh fuel.
4. Check the engine and gear reduction case oil levels with the engine in a level position.
5. Start the engine.
6. Check for fuel leaks.
7. Check clutch control operation to make sure the unit stops when the clutch control is released.

SPECIFICATIONS

Lawnaire IV & V

LAWNNAIRE IV

Dimensions:

Width.....	28" (711 mm)
Length.....	51" (1295 mm)
Length (handle folded).....	46" (1168 mm)
Height (transport).....	47.5" (1206 mm)
Height (handle folded).....	30" (762 mm)

Net Weight:

Dry, w/o acc. weight.....	240 lbs. (109 Kg)
Dry, w/ acc. weight.....	279 lbs. (126 Kg)
With water tank full and acc. weight.....	280 lbs. (127 Kg)

Speed:

Transport.....	up to 320 f.p.m. (97.5 M.p.m.)
Aerate.....	up to 305 f.p.m. (93 M.p.m.)

Drive:

Primary.....	V Belt, 4L section
Secondary.....	#40 plated roller chain

Wheels:

Front.....	11" (279 mm) Dia. water tank 5.2 gal. (19.7 L) max. capacity
Rear.....	8 x 2.50 semi-pneumatic tires with 3/4" ball bearings

Aeration:

Tines....	3/4" (19 mm) formed from .08" hardened chrome molybdenum alloy steel, 30 per unit
Penetration Depth.....	2 3/4" (70 mm) max.
Swath Width.....	19" (483 mm)
Hole Pattern....	3 3/4" x 7" (95 x 178 mm) on center
Production.....	Up to 28,975 sq. ft. / hour

Engines:

Model 744908B & 744910B

Model.....	HONDA GX120K1HX 4 cycle....	7.2 cu.in. (118 cc).....	*3.5 HP (2.6 KW)
Starter.....	Recoil, on/off switch		
Governor.....	3200 RPM, no load		
Idle Speed.....	1400 + 100 RPM		
Fuel Tank.....	3.2 qt. (3.0 L)		
Gear Reduction.....	6 to 1		

Model 744909C & 744911C

Model.....	#12S4520131FB, Type 0141, Trim .01 Briggs& Stratton 4 cycle...12.5 cu.in. (206cc)..*6.0HP (4.5KW)
Starter.....	Recoil, on/off switch
Governor.....	3200 RPM +/- 100 RPM, no load
Idle Speed.....	2000 RPM
Fuel Tank.....	4 qt. (3.8 L)
Gear Reduction.....	6 to 1

* as tested by manufacturer @ 3600 R.P.M.

LAWNNAIRE V

Dimensions:

Width.....	35.5" (902 mm)
Length.....	52.5" (1334 mm)
Length (handle folded).....	46" (1168 mm)
Height (transport).....	47.5" (1206 mm)

Net Weight:

Dry, w/o acc. weight.....	270 lbs. (122 Kg)
Dry, w/ acc. weight.....	309 lbs. (140 Kg)
With water tank full and acc. weight.....	330 lbs. (1497 Kg)

Speed:

Transport.....	up to 320 f.p.m. (97.5 M.p.m.)
Aerate.....	up to 305 f.p.m. (93 M.p.m.)

Drive:

Primary.....	V Belt, 4L section
Secondary.....	#40 plated roller chain

Wheels:

Front.....	11" (279 mm) Dia. water tank 7.9 gal. (29.9 L) max. capacity
Rear.....	8 x 2.50 semi-pneumatic tires with 3/4" ball bearings

Aeration:

Tines....	3/4" (19 mm) formed from .08" hardened chrome molybdenum alloy steel, 42 per unit
Penetration Depth.....	2 3/4" (70 mm) max.
Swath Width.....	26 1/2" (673 mm)
Hole Pattern....	3 3/4" x 7" (95 x 178 mm) on center
Production.....	Up to 40,400 sq. ft. / hour

PARTS SECTION

FIGURE 1



Lawnair IV & V

FRAME GROUP

FIGURE 1

ITEM	PART NO.	DESCRIPTION	QTY	ITEM	PART NO.	DESCRIPTION	QTY
1	64140-9	COTTER PIN, 12 x 1.12 YS	3				
2	64262-018	BLT-FLG HD 3/8-16X1-3/4	1				
3	4170672	SHAFT, JACK LA4	1				
4	2702877.7	FRAME, TRANSPORT LA4	1				
(ITEMS 3 & 4 USED ON LAWNNAIRE IV ONLY)							
5	841261	SPROCKET, 16T, 1/2P	1				
6	2703341.7	BELLCRANK AY, IDLER	1				
7	2703519	BUSHING, SH .33X.75X.88	2				
8	2703756.7	LINK AY, LOWER LEFT	1				
9	2703757.7	LINK AY, UPPER LEFT	1				
10	2703758.7	LINK AY, LOWER RIGHT	1				
11	2703759.7	LINK AY, UPPER RIGHT	1				
12	64164-02	KEY 3/16 X 1 SQUARE	2				
13	64163-67	WASHER-.516X1X12GA	2				
14	4164331	PULLEY, DRIVEN 10"	1				
15	518438	BUSHING	2				
16	521856	BEARING,BALL	2				
17	521857	COLLAR,BRG LOCKING	2				
18	64044-18	SCREW-SET 5/16-18 x 5/16	2				
19	85010N	ZERK, 1/4-28	1				
20	64141-4	NUT-WLF 3/8-16	5				
21	64139-24	BLT-WLF 3/8-16 X 1	4				
22	64141-6	NUT, 5/16-18	6				
23	548942	PULLEY, PLAIN IDLER 3.25"	1				
24	548962	HOUSING,BEARING	4				
25	64163-31	WSHR, .38 1.00.12 YS FLAT	4				
26	64018-7	BOLT-CRG 3/8-16X1-1/4	2				
27	64218-07	SCRW, .31-18 1.50	2				
28	64018-9	BLT-CRG 5/16-18X3/4	4				
29	64268-03	NUT-FL NYLN LOCK 3/8-16	2				
30	4170671	SHAFT, LA5 JACK	1				
31	2703019.7	FRAME, TRANSPORT LA5	1				
(ITEMS 30 & 31 USED ON LAWNNAIRE V ONLY)							
32	4164773	FRAME AY, LAWNNAIRE V	1				
33	4164772	FRAME AY, LAWNNAIRE IV	1				
34	64163-61	WASHER	3				
(USED ON LAWNNAIRE IV ONLY)							
35	4137227	SPRING-TORSION	1				
36	64018-15	BLT-CRG 5/16-18X1	2				

FIGURE 2

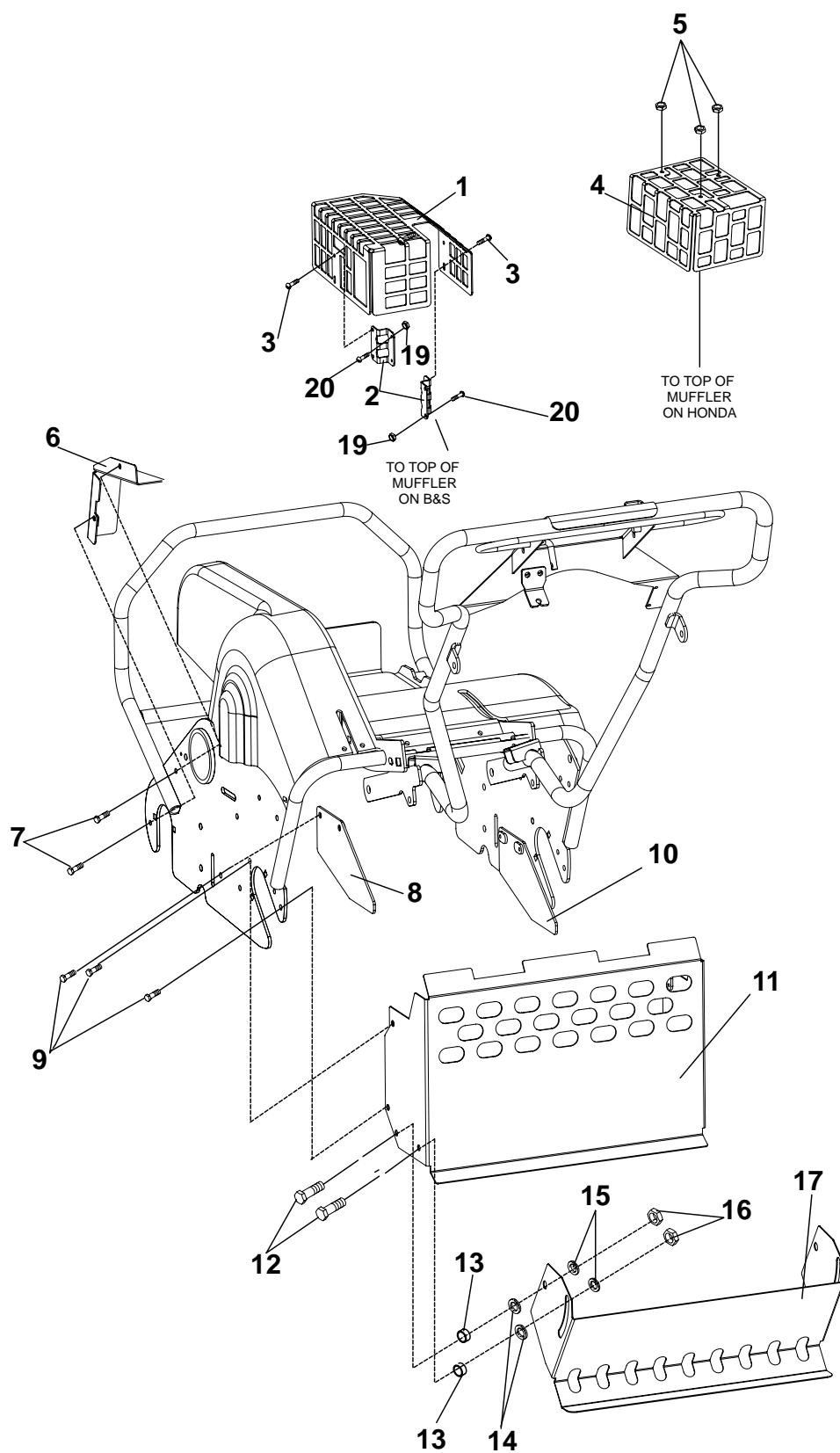


FIGURE 2

ITEM	PART NO.	DESCRIPTION	QTY	ITEM	PART NO.	DESCRIPTION	QTY
1	4164830.7	GUARD-MUFFLER, B&S (USED ON 744909C & 744911C)	1				
2	4164829.7	BRKT-MNTG MUFF GUARD	2				
3	64152-56	SCREW-HHS TAP #12X1/2	8				
4	4164805.7	GUARD-MUFFLER, HONDA (USED ON 744908B & 744910B)	1				
5	64207-08	NUT-HEX M5-.8 EDGE LOCK	3				
6	4164696.7	WLDMT-GUARD, FRONT	1				
7	64139-02	BLT-WLF 1/4-20X1/2	2				
8	4164694.7	WLDMT-PLATE, GUARD LH	1				
9	64139-13	BLT-WLF 5/16-18X1/2	8				
10	4164695.7	WLDMT-PLATE, GUARD RH	1				
11	4164697.7	WLDMT-GUARD REAR LAIV (USED ON 744908B & 744909C ONLY)	1				
	4164766.7	WLDMT-GUARD, REAR LAV (USED ON 744910B & 744911C ONLY)					
12	64123-50	BLT-HEX 3/8-16X1	4				
13	518438	BUSHING-STL .391X.5X.35	4				
14	64163-19	WSHR-33-64X1-1/4X12GA	4				
15	64163-61	WSHR-.81X.406X16GA	4				
16	64229-03	NUT-NYLON LOCK 3/8-16	4				
17	4164389.7	GUARD-REAR, DROP DOWN (USED ON 744908B & 744909C ONLY)	1				
	4164707.7	GUARD-REAR, DROP DOWN (USED ON 744910B & 744911C ONLY)					
18*	4163904	KIT,HONDA MUFFLER GUARD 1 (THIS KIT CONTAINS OTHER PARTS NOT SHOWN THAT CONNECT ITEM 4 TO THE HONDA MUFFLER.)	1				
19	64025-14	NUT-HEX 10-32	4				
20	64197-015	BLT-TDFM 10-32X1/2 TRX HD	4				

FIGURE 3



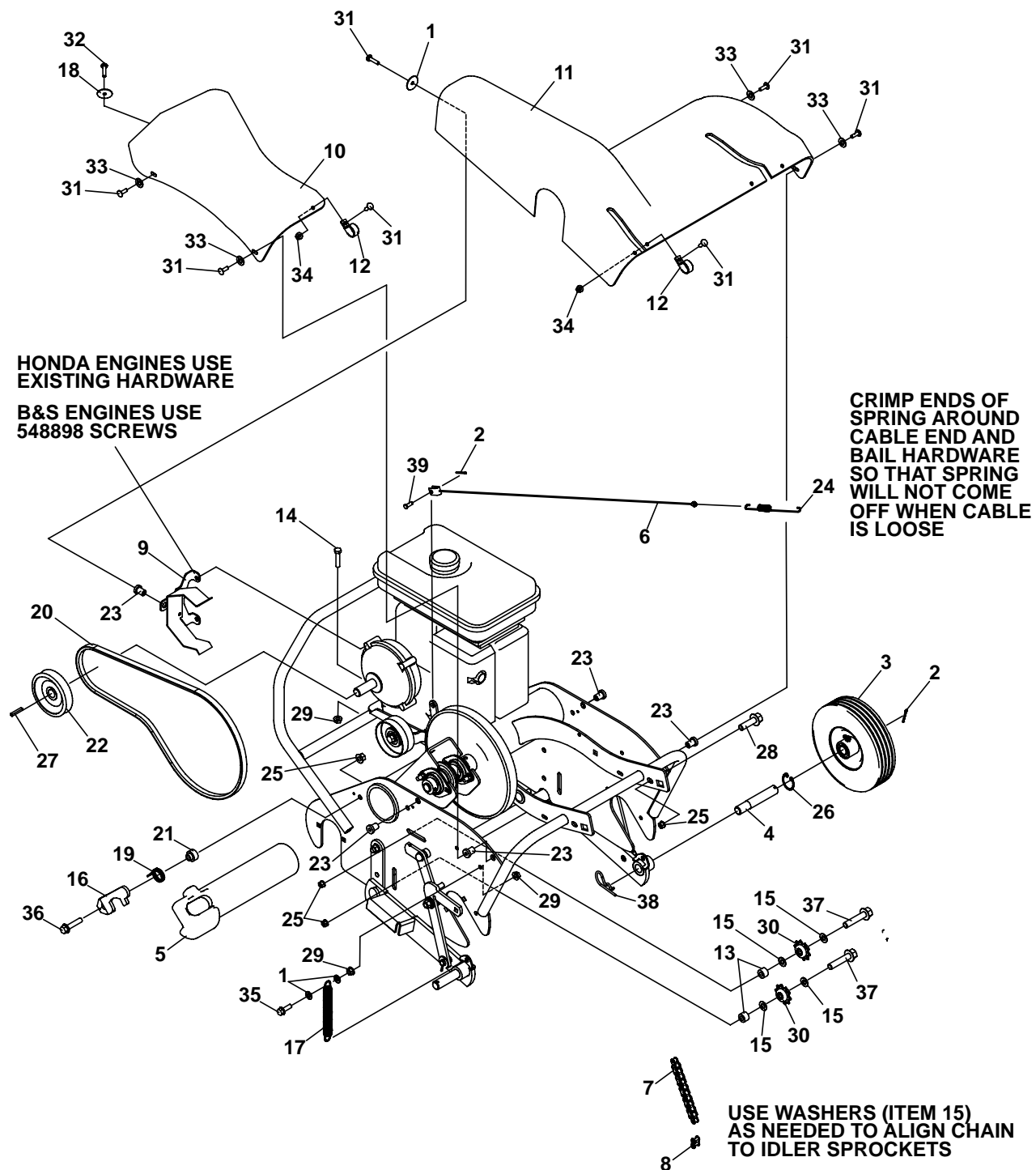
Lawnair IV & V

MAIN GROUP LAWNNAIRE IV

FIGURE 3

ITEM	PART NO.	DESCRIPTION	QTY	ITEM	PART NO.	DESCRIPTION	QTY
1	64163-29	WASHER-21/64 X 1 X 11GA	5				
2	64140-9	COTTER PIN, 12 x 1.12	3				
3	4124192	WHEEL, 8X2.5 SEMI-PNEUM	2				
4	2703148	WEIGHT, LAWNNAIRE	2				
5	4117195	CABLE, CLUTCH	1				
6	4164365	COVER, DRIVE LA4	1				
7	2703445	COVER, TINE LA4	1				
8	2703611	CHAIN, #40 124P W/CONN	1				
9	4113841	LINK, #40 CHAIN NICKEL	1				
10	2703616.7	BRACKET AY, COVER	1				
11	48228-1A	CLIP-CABLE INSULATED	5				
12	822474	SPACER	2				
13	64140-16	COTTER PIN-5/64X3/4	2				
14	64139-23	BLT-WLF 3/8-16 X 1-3/4	4				
15	64163-61	WSHR .81X.406X16GA	A/R				
16	4109880.7	LATCH, WEIGHT	2				
17	4113746	SPRING, EXT .687 X 6.0	2				
18	64189-20	SCRW,.25-20.50	2				
19	4114101	ROD, ADJUSTMENT	2				
20	4114111	SPRING, TORSION 1.19	2				
21	4114319	BELT, 4L-480 KEVLAR	1				
22	4114608	BUSHING, SH .390 ID X .71	2				
23	4115632	KNOB, 2.5" .38-24	2				
24	521608	PULLEY,4 IN DIA	1				
25	522516	MOUNT, ISOLATION (KC)	4				
26	4118356	SPRING, EXTENSION	1				
27	64188-66	PIN,CLVIS.19DIA X 1.0LG	2				
28	64164-11	KEY-3/16X3/16X1-1/4 SQ	1				
29	64229-01	LOCKNUT-NYLON 1/4-20	6				
30	64141-6	NUT, 5/16-18	10				
31	548960	SPROCKET,IDLER	2				
32	64123-114	BOLT-HEX 1/4-20X1	8				
33	64151-3	NUT,.38-24 HX CRWNLOCK	2				
34	64188-65	PIN,CLEVIS .25 .68 PS	1				
35	64163-03	WSHR-.256IDX.62ODX18GA	7				
36	64268-03	NUT-FL NYLON LOCK 3/8-16	4				
37	64123-47	BLT-HEX 5/16-18X1-1/4	2				
38	64262-018	BLT-FLG HD 3/8-16 X 1-3/4	2				
39	64262-014	BLT-FLG HD 3/8-16 X 2	2				
40	523263	BEARING-3/4X1 3/8	4				

FIGURE 4



Lawnaire IV & V

MAIN GROUP-LAWNNAIRE V

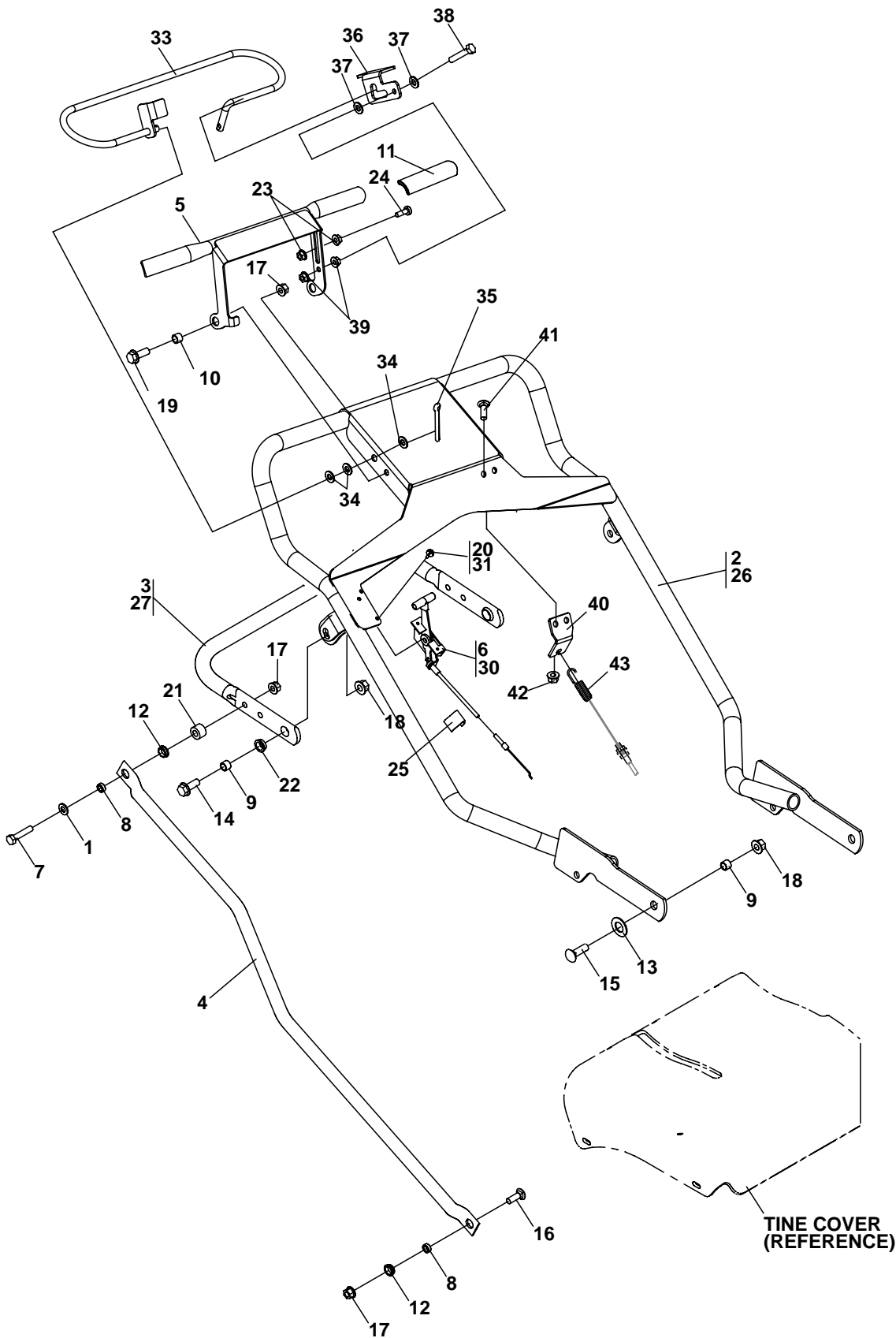
FIGURE 4

ITEM	PART NO.	DESCRIPTION	QTY	ITEM	PART NO.	DESCRIPTION	QTY
1	64163-29	WASHER-21/64 X 1 X 11GA	6				
2	64140-9	COTTER PIN, 12 x 1.12	3				
3	4124192	WHEEL, 8X2.5 SEMI-PNEUM	2				
4	2703026	AXLE, TRANSPORT WHEEL	2				
5	2703148	WEIGHT, LAWNNAIRE	2				
6	4117195	CABLE, CLUTCH	1				
7	2703611	CHAIN, #40 124P W/CONN	1				
8	4113841	LINK, #40 CHAIN NICKEL	1				
9	2703616.7	BRACKET AY, COVER	1				
10	4164611	COVER, SPROCKET LA5	1				
11	4164605	COVER, DRIVE AND TINE	1				
12	48228-1A	CLIP-CABLE INSULATED	6				
13	822474	SPACER	2				
14	64139-23	BLT-WLF 5/16-18 X 1-3/4	4				
15	64163-61	WSHR .81X.406X16GA	A/R				
16	4109880.7	LATCH, WEIGHT	2				
17	4113746	SPRING, EXT .687 X 6.0	2				
18	64163-55	WSHR .328X.75X14 GA	1				
19	4114111	SPRING, TORSION 1.19	2				
20	4114319	BELT, 4L-480 KEVLAR	1				
21	4114608	BUSHING, SH .390 ID X .71	2				
22	521608	PULLEY, 4 IN DIA	1				
23	522516	MOUNT, ISOLATION (KC)	5				
24	4118356	SPRING, EXTENSION	1				
25	64268-03	NUT-FL NYLN LOCK 3/8-16	6				
26	64144-02	SNAP RING 3/4	2				
27	64164-11	KEY-3/16X3/16X1-1/4 SQ	1				
28	64262-011	BOLT-FLG HD 3/8-16 X 1	2				
29	64141-6	NUT, 5/16-18	8				
30	548960	SPROCKET, IDLER	2				
31	64123-114	BOLT-HEX 1/4-20X1	12				
32	64197-025	BLT-TDFM 1/4-20X5/8	1				
33	64163-03	WSHR-.256IDX.62ODX18GA	4				
34	64229-01	LOCKNUT-NYLON 1/4-20	6				
35	64123-47	BLT-HEX 5/16-18X1-1/4	2				
36	64262-018	BLT-FLG HD 3/8-16 X 1-3/4	2				
37	64262-014	BLT-FLG HD 3/8-16 X 2	2				
38	64168-4	COTTER-HAIRPIN	2				
39	64188-65	PIN, CLEVIS .25 .68 PS	1				

HANDLE GROUP

Lawnaire
IV & V

FIGURE 5



Lawnaire IV & V

HANDLE GROUP

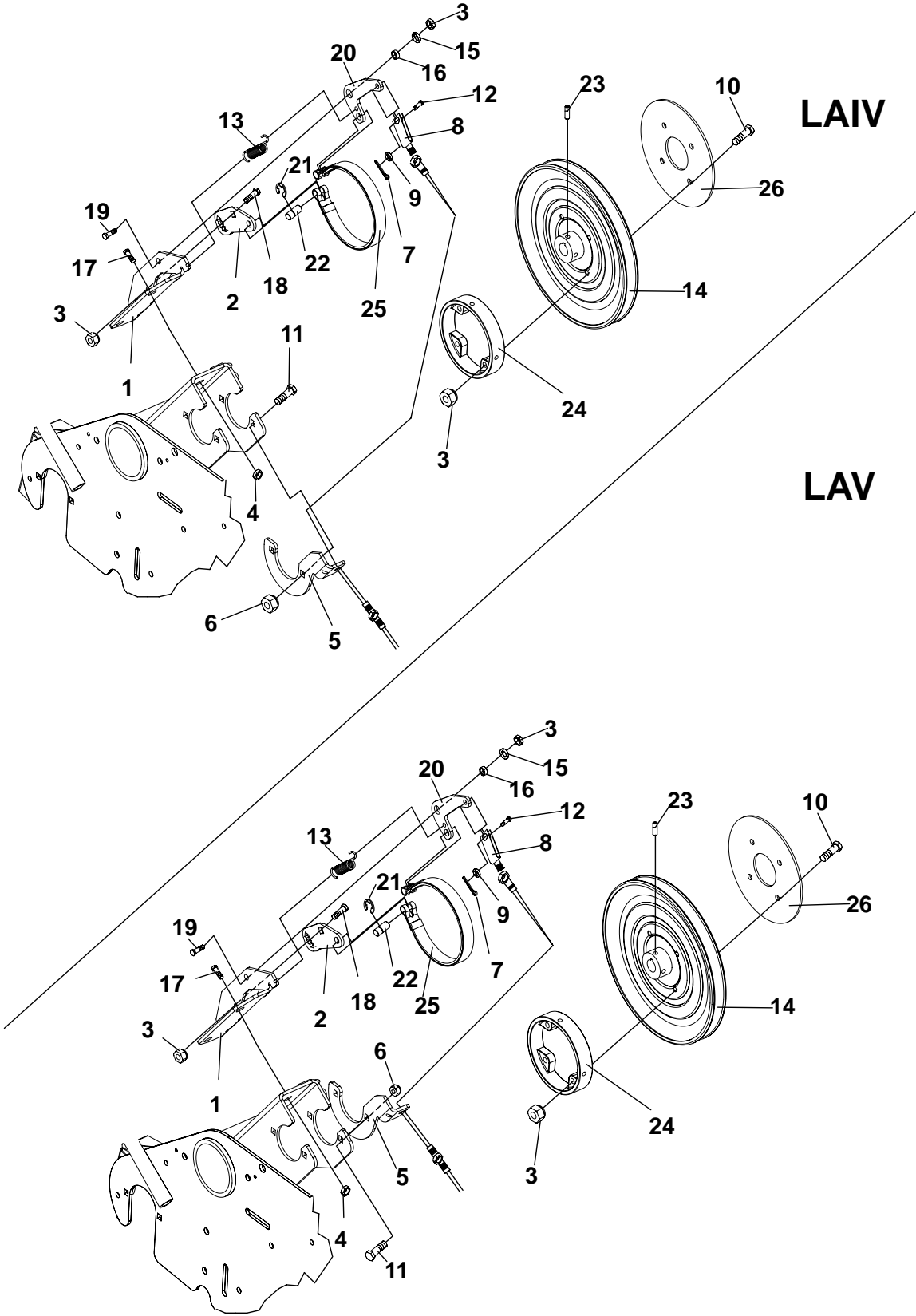
FIGURE 5

ITEM	PART NO.	DESCRIPTION	QTY	ITEM	PART NO.	DESCRIPTION	QTY
1	64163-95	WSHR.,.31.69.06 YS FLT	2	40	4164518.7	BRKT-CABLE MOUNT	1
2	4164774	S-LA4 HANDLE W/DECALS	1	41	64123-54	BLT-HEX 5/16-18X3/4	2
3	2703059.7	HANDLE, HGHT ADJ. LA IV	1	42	64229-02	NUT-NYLOCK 5/16-18	2
(ITEMS 2 & 3 USED ON LAWNNAIRE IV ONLY)				43	4164339	CABLE-BRAKE	1
4	2703067.7	TUBE, CONTROL LA IV & V	2	* NOT ILLUSTRATED			
5	4164738.7	BAIL AY, LA IV & V	1				
6	2703185	CNTRL AY, THROTTLE 43	1				
(USED ON HONDA MODELS ONLY)							
7	64123-69	BOLT-5/16-18X1-1/2 HEX	2				
8	517226	BRG,SLV .33 .50 .20	4				
9	518438	BUSHING.39IDX.50ODX.35	4				
10	521679	BUSHING	2				
11	523139	GRIP,HANDLE	2				
12	4116398	BUSHING .50IDX.13 THK	4				
13	64163-73	WASHER	2				
14	64139-24	BLT-WLF 3/8-16 X 1	2				
15	64018-7	BOLT-CRG 3/8-16X1-1/4	2				
16	64018-9	BLT-CRG 5/16-18X3/4 G5	2				
17	64268-02	NUT-FL NYLN LCK 5/16-18	6				
18	64268-03	NUT-FL NYLN LCK 3/8-16	4				
19	64262-007	BLT-FLG HD 5/16-18 X 1	2				
20	64152-18	TSCRW,#8-18.50 SLF-DRL	2				
(USED ON HONDA MODELS ONLY)							
21	822474	SPACER	2				
22	830165	BUSHING	2				
23	64141-2	NUT-WLF 1/4-20	2				
24	64218-04	SCREW, 1/4 -20 X 3/4	1				
25	78007N	THROTTLE CABLE CLIP	1				
26	4164775	S-LA5 HANDLE W/DECALS	1				
27	2703060.7	HANDLE, HEIGHT ADJ. LA V	1				
(ITEMS 26 & 27 USED ON LAWNNAIRE V ONLY)							
28*	22372	B&S CABLE CLAMP	1				
29*	64197-023	BLT-TDFM 10-32X3/4	1				
30	4163186	CONTROL-THROTTLE	1				
31	64152-46	SCREW-8-32x3/8 S-TAP	2				
32	64025-15	NUT-10-24	2				
(ITEMS 28 - 32 USED ON B & S MODELS ONLY)							
33	4164520	WLDMT-BRAKE BAR	1				
34	64163-31	WSHR-25/64X1X12	3				
35	64140-3	COTTER PIN-3/32X3/4	1				
36	41664504	BRKT-INTERLOCK	1				
37	64163-03	WSHR .256IDX.62ODX18GA.	2				
38	64123-114	BLT-HEX 1/4-20X1	1				
39	64141-2	NUT-WLF 1/4-20	2				

BRAKE GROUP

**Lawnaire
IV & V**

FIGURE 6



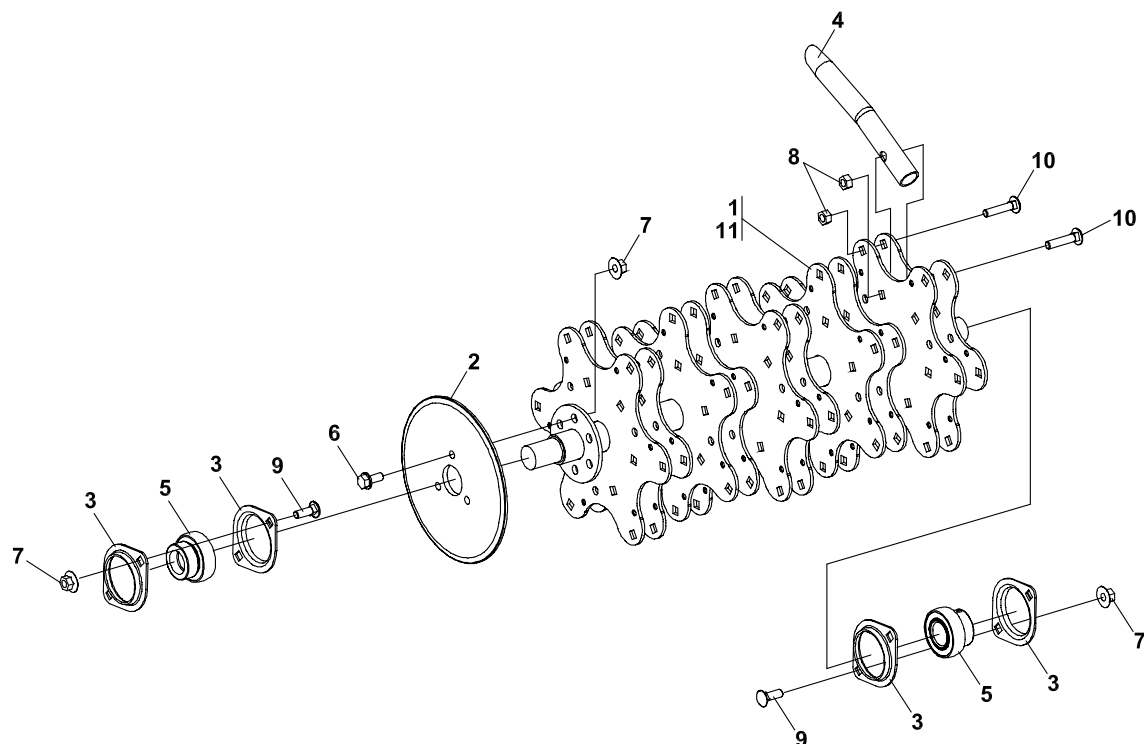
ITEM	PART NO.	DESCRIPTION	QTY	ITEM	PART NO.	DESCRIPTION	QTY
1	4164802.7	MOUNT BRKT-LAIV, BRAKE (USED ON LAIV MODEL ONLY)	1				
	4164276.7	MOUNT BRKT-LAV, BRAKE (USED ON LAV MODELS ONLY)					
2	4164283.7	BRAKE MOUNT-POST	1				
3	64229-02	NUT-NYLON LOCK 5/16-18	7				
4	64229-05	NUT-NYLON LOCK 1/2-13	2				
5	4164342.7	MOUNT-CABLE, LAIV (USED ON LAIV MODEL ONLY)	1				
	4164393.7	MOUNT-CABLE, LAV (USED ON LAV MODELS ONLY)					
6	64141-6	NUT-WLF 5/16-18	4				
7	64140-3	COTTER PIN-3/32 X 3/4	1				
8	4164339	CABLE-BRAKE, LAIV LAV	1				
9	64163-03	WSHR .256IDX.62ODX18GA.	1				
10	64123-47	BLT-HEX 5/16-18X1-1/4	4				
11	64018-15	BLT-CRG 5/16-18X1	2				
12	64188-65	PIN CLEVIS 1/4X.62	1				
13	548995	SPRING EXTENSION	1				
14	4164331	PULLEY-10IN 4L V-BELT	1				
15	64163-55	WSHR .328X.75X14 GA	1				
16	517226	BRG SLV .33 .50 .20 SNTR	1				
17	64123-39	BLT-HEX 1/2-13X1-1/4	2				
18	64018-9	BLT-CRG 5/16-18X3/4 G5	2				
19	64123-107	BLT-HEX 5/16-18X7/8	1				
20	4164282.7	BRAKE LEVER-LA4,5	1				
21	64221-07	E-RING .375	2				
22	4164396	PIN-BAND BRAKE	2				
23	64044-18	SCREW-SET 5/16-18 x 5/16	2				
24	4124853-01	DRUM-BRAKE, 4.75 X .937	1				
25	4164513	BAND-BRAKE, 4.75 DIA	1				
26	4164865.7	RING-SUPPORT, .50D X 2ID	1				

* NOT ILLUSTRATED

TINE WHEEL GROUP

Lawnaire
IV & V

FIGURE 7



Lawnaire IV & V

TINE WHEEL GROUP

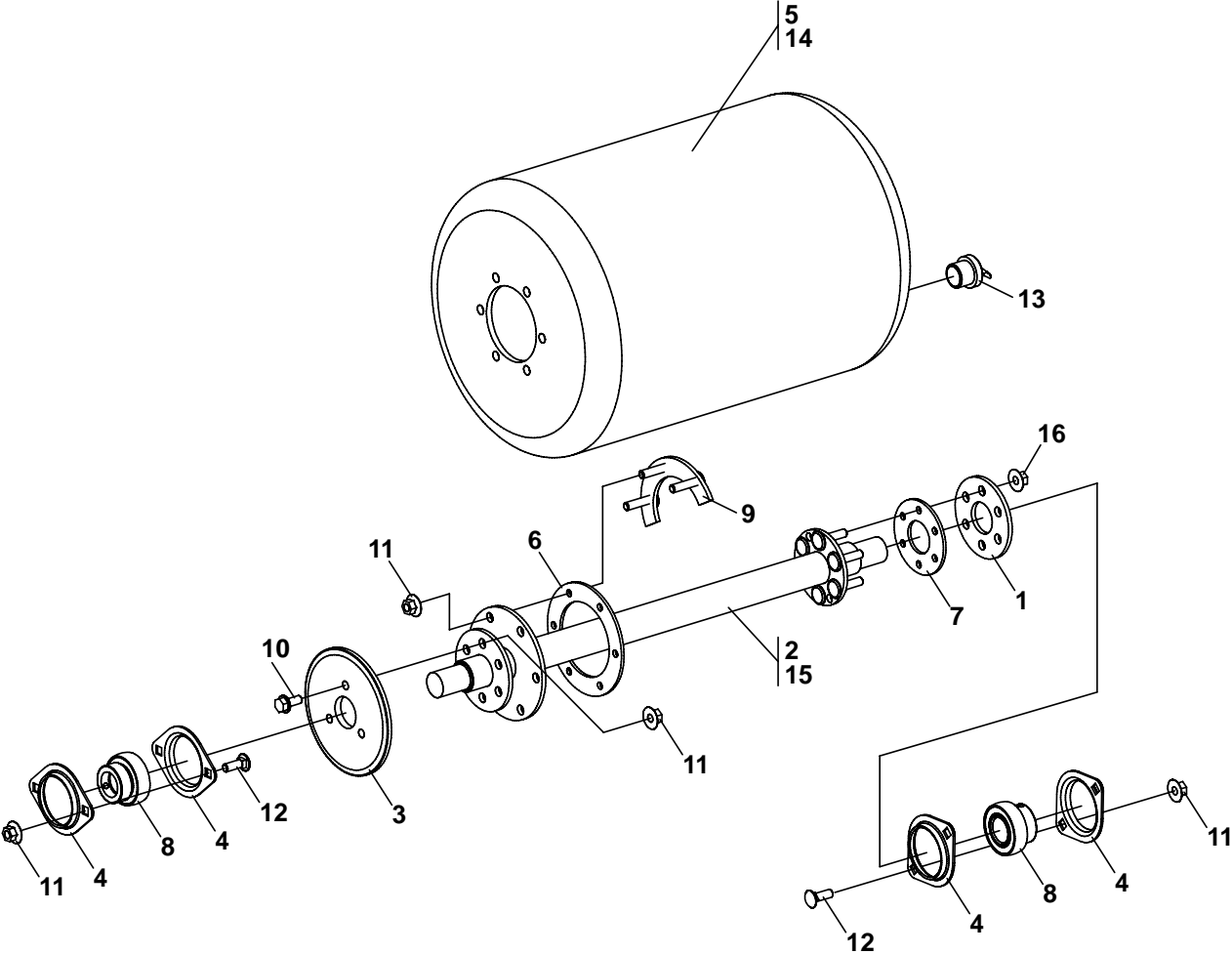
FIGURE 7

ITEM	PART NO.	DESCRIPTION	QTY	ITEM	PART NO.	DESCRIPTION	QTY
1	2702742.7	TINE WHEEL AY, LA4 (ITEM 1 USED ON LAWNNAIRE IV ONLY)	1				
2	2703160	SPROCKET, 42T.50P	1				
3	2703508	FLANGE, BEARING 2.04 I.D.	4				
4	522361	TINE, CORING 3/4 (QTY 30 USED ON LAWNNAIRE IV) (QTY 42 USED ON LAWNNAIRE V)					
5	545786	BEARING ASSEMBLY	2				
6	64139-08	BOLT-5/16-18X3/4 WLF	3				
7	64141-6	NUT, 5/16-18	7				
8	64151-15	5/16-18 HEX NUT CNTRLCK (QTY 60 USED ON LAWNNAIRE IV) (QTY 84 USED ON LAWNNAIRE V)					
9	64018-9	BLT-CRG 5/16-18X3/4 G5	4				
10	64018-34	BLT-CAR 5/16-18 X 1-1/2 (QTY 60 USED ON LAWNNAIRE IV) (QTY 84 USED ON LAWNNAIRE V)					
11	2703004.7	TINE WHEEL AY, LA5 (ITEM 11 USED ON LAWNNAIRE V ONLY)	1				

DRUM GROUP

**Lawnaire
IV & V**

FIGURE 8



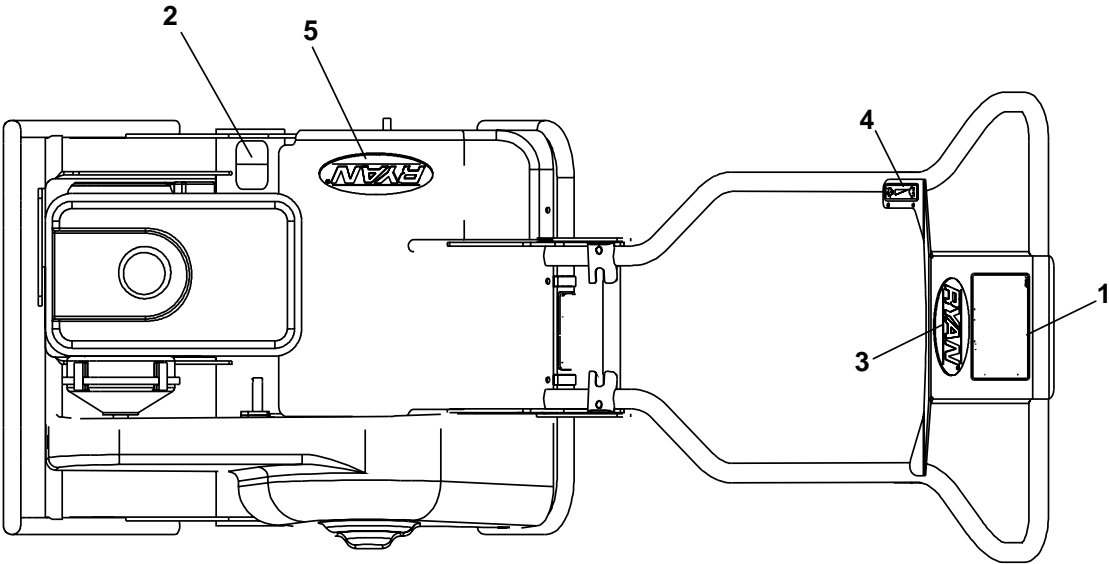
Lawnaire IV & V

DRUM GROUP

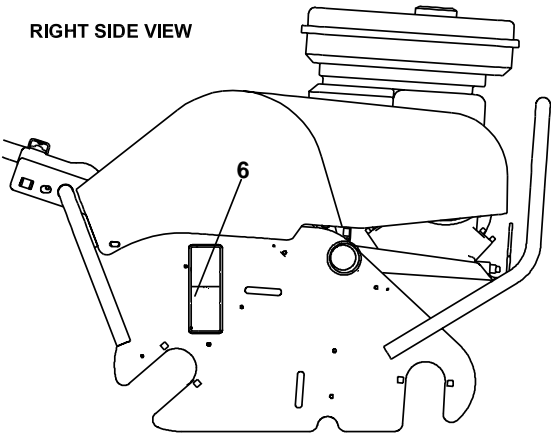
FIGURE 8

ITEM	PART NO.	DESCRIPTION	QTY	ITEM	PART NO.	DESCRIPTION	QTY
1	2702741.7	PLATE, FLANGE	1				
2	2703102.7	DRIVE AY, LA4 DRUM (ITEM 2 USED ON LAWNNAIRE IV ONLY)	1				
3	2703157	SPROCKET, 30T .50P	1				
4	2703508	FLANGE, BEARING 2.04 I.D.	4				
5	2703783	DRUM, WATER LA4 (ITEM 5 USED ON LAWNNAIRE IV ONLY)	1				
6	522480	GASKET, 4.50 DIA.	1				
7	522481	GASKET, 3.00 DIA.	1				
8	545786	BEARING ASSEMBLY	2				
9	545887	RING AY, SPLIT	2				
10	64139-08	BOLT-5/16-18X3/4 WLF	3				
11	64141-6	NUT, 5/16-18	7				
12	64018-9	BLT-CRG 5/16-18X3/4 G5	4				
13	821274	PLUG, DRAIN	1				
14	2703785	DRUM, WATER LA5	1				
15	2703108.7	DRIVE AY, LA5 DRUM (ITEMS 14 & 15 USED ON LAWNNAIRE V ONLY)	1				
16	64025-02	NUT-HEX 5/16-18	12				

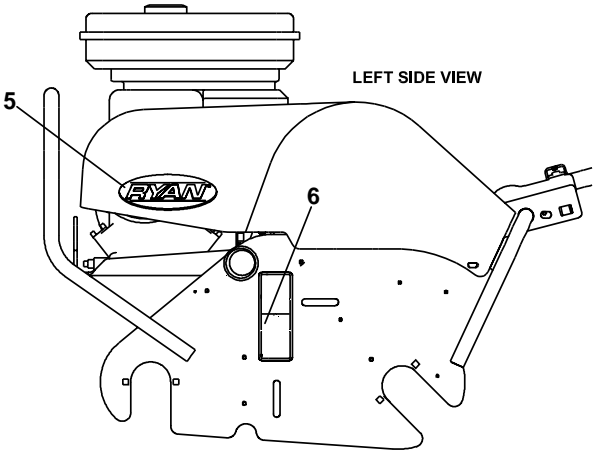
FIGURE 9



RIGHT SIDE VIEW



LEFT SIDE VIEW



**Lawnaire
IV & V**

DECAL GROUP-LAWNNAIRE IV & V

FIGURE 9

ITEM	PART NO.	DESCRIPTION	QTY	ITEM	PART NO.	DESCRIPTION	QTY
1	4163714	DECAL, OP INSTR LA IV & V	1				
2	4169369	DECAL, EXPLOSION FUEL EEC	1				
3	4161125	LABEL-RYAN	1				
4	4115768	DECAL, HAND THROTTLE	1				
5	4161123	LABEL-RYAN	2				
6	4163762	DECAL,DANGER FEET	1				

SCHILLER GROUNDS CARE, INC.
ONE BOB-CAT LANE
P.O. BOX 469
JOHNSON CREEK, WI 53038
920-699-2000
www.schillergc.com

