

MAN 4165209
Rev. A 3-2010



SCHILLER

GROUNDS
CARE

MODEL:
75-70696
CORE AERATOR AR240

OP/PARTS MANUAL

CORE AER- ATOR

CALIFORNIA

Proposition 65 Warning

Diesel engine exhaust and some of its constituents are known to the State of California to cause cancer, birth defects and other reproductive harm.

WARNING

The engine exhaust from this product contains chemicals known to the State of California to cause cancer, birth defects or other reproductive harm.

Californie Proposition 65 Avertissement

Les échappements des moteurs diesel et certains de leurs composés sont reconnus par l'Etat de Californie pour être cancérigènes, provoquer des défauts congénitaux et d'autres dangers en matière de reproduction.

AVERTISSEMENT

L'émission du moteur de ce matériel contient des produits chimiques que l'Etat de Californie considère être cancérigènes, provoquer des défauts congénitaux et d'autres dangers en matière de reproduction.

California Advertencia de la Proposicion 65

El estado de California hace saber que los gases de escape de los motores diesel y algunos de sus componentes producen cáncer, defectos de nacimiento y otros daños en el proceso de reproducción humana.

ADVERTENCIA

El estado de California hace saber que los gases de escape de este producto contienen productos químicos que producen cáncer, defectos de nacimiento y otros daños en el proceso de reproducción humana.

CALIFORNIA

Proposition 65 Warning

Battery posts, terminals, wiring insulation, and related accessories contain lead and lead compounds, chemicals known to the State of California to cause cancer and birth defects or other reproductive harm.
WASH HANDS AFTER HANDLING.

CORE AER- ATOR

IMPORTANT MESSAGE

Thank you for purchasing this Schiller Grounds Care, Inc. product. You have purchased a world class product, one of the best designed and built anywhere.

This product comes with an Owner/Operator's Manual. The useful life and good service you receive from this product depends to a large extent on how well you read and understand this manual. Treat this product properly and adjust it as instructed, and it will give you many years of reliable service.

See a Schiller Grounds Care, Inc. dealer for any service or parts needed. Schiller Grounds Care, Inc. service ensures that you continue to receive the best results possible from Schiller Grounds Care, Inc. products. You can trust Schiller Grounds Care, Inc. replacement parts because they are manufactured with the same high precision and quality as the original parts.

Schiller Grounds Care, Inc. designs and builds its equipment to serve many years in a safe and productive manner. For longest life, use this product only as directed in the manual, keep it in good repair and follow safety warnings and instructions. You'll always be glad you did.

Schiller Grounds Care, Inc.
One Bob Cat Lane
Johnson Creek, WI 53038-0469

| TABLE OF CONTENTS | FIGURES | PAGE |
|------------------------------|----------------|--------|
| INTRODUCTION | | 2 |
| SPECIFICATIONS | | 3 |
| SAFETY | | 4-6 |
| INSTALLATION / REMOVAL | | 7 |
| OPERATION | | 8 |
| SERVICE | | 9 |
| MAIN FRAME ASSEMBLY | FIGURE 1 | 10, 11 |
| AXLE & DISK ASSEMBLY | FIGURE 2 | 12, 13 |

DESCRIPTION

This 4 wheel drive tractor with rugged front mounted core areator is the perfect combination for fast effective turf penetration.

Spring and fall aeration programs benefit from core aeration. Soil cores up to 3-1/2 inches are removed with minimum surface disturbance.

Seven ground driven rotors with greaseable bushings have six tines each for a total of forty-two tines.

Down pressure of the front lift uses the weight of the tractor to penetrate turf.

This aerator has four weights and a weight box to carry additional weight if extra penetration is required.



SPECIFICATIONS

| | |
|----------------------------------|--|
| Weight | 390 lbs. (177 Kg) with 4 weights |
| Overall Width | 45-1/2" (1156 mm) |
| Working Width | 40-1/4" (1022 mm) |
| Overall Height..... | 28-1/2" (724 mm) |
| Overall Length | 30" (762 mm) |
| Main Shaft Bearings | Greaseable 1-1/4" |
| Aerating Wheels | 7 Steel w/bushings and pressurized lubrication fitting |
| Tines..... | 6 per wheel...3/4" core tines |
| Aerating Width (actual)..... | 42" (1067 mm) |
| Aerating Width (effective) | 48" (1219 mm) |
| Aerating Depth..... | Up to 3-1/2" (89 mm) |
| Aerating Pattern..... | 6-1/2" (165 mm) x 7" (178 mm) |

NOTICE !!!

Unauthorized modifications may present extreme safety hazards to operators and bystanders and could also result in product damage.

Schiller Grounds Care, Inc. strongly warns against, rejects and disclaims any modifications, add-on accessories or product alterations that are not designed, developed, tested and approved by Schiller Grounds Care, Inc. Engineering Department. Any Schiller Grounds Care, Inc. product that is altered, modified or changed in any manner not specifically authorized after original manufacture—including the addition of “after-market” accessories or component parts not specifically approved by Schiller Grounds Care, Inc.—will result in the Schiller Grounds Care, Inc. Warranty being voided.

Any and all liability for personal injury and/or property damage caused by any unauthorized modifications, add-on accessories or products not approved by Schiller Grounds Care, Inc. will be considered the responsibility of the individual(s) or company designing and/or making such changes. Schiller Grounds Care, Inc. will vigorously pursue full indemnification and costs from any party responsible for such unauthorized post-manufacture modifications and/or accessories should personal injury and/or property damage result.



This symbol means:
ATTENTION!
BECOME ALERT!

Your safety and the safety of others is involved.

Signal word definitions:

The signal words below are used to identify levels of hazard seriousness. These words appear in this manual and on the safety labels attached to Schiller Grounds Care, Inc. machines. For your safety and the safety of others, read and follow the information given with these signal words and/or the symbol shown above.

⚠ DANGER

DANGER indicates an imminently hazardous situation which, if not avoided, WILL result in death or serious injury.

⚠ WARNING

WARNING indicates a potentially hazardous situation which, if not avoided, COULD result in death or serious injury.

⚠ CAUTION

CAUTION indicates a potentially hazardous situation which, if not avoided, MAY result in minor or moderate injury. It may also be used to alert against unsafe practices or property damage.

CAUTION

CAUTION used without the safety alert symbol indicates a potentially hazardous situation which, if not avoided, MAY result in property damage

Schiller Grounds Care, Inc.

One Bobcat Lane
Johnson Creek, WI 53038 U.S.A
Phone: 920-699-2000
Fax: 920-699-3683

MODEL NUMBER**SERIAL NUMBER**

MODEL NUMBER: This number appears on sales literature, technical manuals and price lists.

SERIAL NUMBER: This number appears only on your mower. It contains the model number followed consecutively by the serial number. Use this number when ordering parts or seeking warranty information.

GENERAL SAFETY

1. Read and understand the Owner's Manual before attempting to operate this machine.
2. Operate all controls from the operator's seat. NO RIDERS.
3. Keep all shields in place and safety switches adjusted properly.
4. Do not leave equipment unattended. STOP the engine and remove the key.
5. Do not allow minors or the inexperienced to operate this machine.
6. Keep people and pets a safe distance away from machine using power driven attachments. Injury could result from flying debris.

OPERATING SAFETY

1. STOP ENGINE to install drive belts or make adjustments.
2. WARNING! The tractor may coast when the engine stops. Set Parking Brake.
3. DO NOT TOW! Serious damage to the hydraulic system will result.
4. DO NOT attempt to work on unit or any attachments with the engine running. STOP ENGINE!
5. Before leaving the tractor seat:
 - Disengage PTO drive.
 - Set PARK brake.
 - Stop engine.

⚠ CAUTION

Be alert for irrigation lines, sprinkler systems, stones, curbs or any objects in the path of the aerator.

⚠ CAUTION

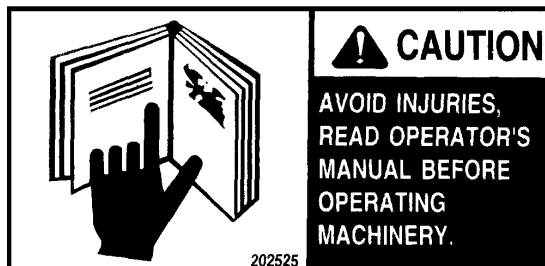
Be careful when operating on slopes. The steering ability is reduced when down pressure is applied to the implement.

⚠ CAUTION

Prevent tipping over.
Lower support stands into position before removing attachment from tractor

⚠ CAUTION

Always remove all rear weights when front mounted attachments are removed to reduce the danger of unit tipping over backward while climbing steep slopes or loading ramps.



INSTALLATION INSTRUCTIONS FOR AERATOR

1. Attach to 4-wheel drive tractor only. This aerator will not work with any other style tractor.
2. Attach to front lift in the usual manner.
3. Place the support stand in the operating position as shown.
4. Attach rear weight bar with 4 weights.



Support stands in operating ("up") position

REMOVAL INSTRUCTIONS FOR AERATOR

1. Thoroughly clean tines inside and out. When storing unit apply a light coat of oil to prevent rust and assure proper coring the next time the unit is put into service.
2. Lower support stands to the down position.
3. Detach from the front lift in the usual manner.

NOTE:

Always remove rear weights when front attachment is removed.



Support stands in ("down") position

OPERATING INSTRUCTIONS

1. With tractor in motion, apply down pressure sufficiently to raise the front wheels of the tractor off the ground. This applies the weight of the tractor to the aerator and enables you to steer.
2. Raise the aerator at the end of each pass. Do not attempt sharp turns with aerator lowered into the soil.

CAUTION operate in reverse with aerator lowered into the soil. Damage to tines may result.

3. Adjust the amount of down pressure, weight and ground speed according to conditions. Use caution when operating on slopes. The steering ability is reduced when down pressure is applied to the implement.
4. In dry hard turf conditions it may be necessary to irrigate before aerating. Also additional weight may be added in the aerator weight box. 4 weights are standard with the aerator.

NOTE:

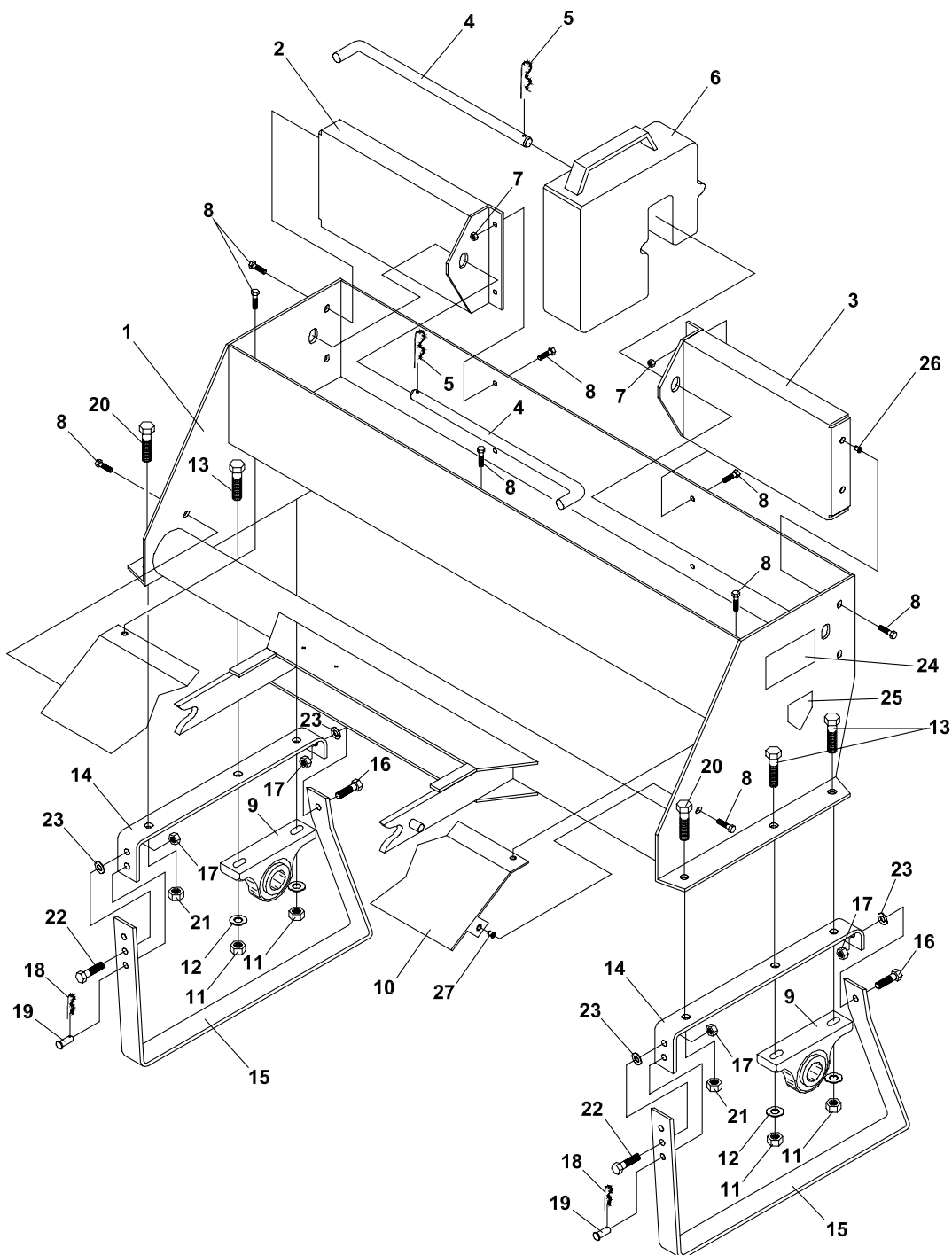
A rear weight bar with 4 weights is required for stability.



Operating Aerator

| LUBRICATION | TINE OR TINE WHEEL REPLACEMENT |
|--|---|
| Daily: <ul style="list-style-type: none">• Visual inspection. Grease individual tine wheel bushings until grease can be seen at the wheel bushings. 25 Hour: <ul style="list-style-type: none">• In addition to daily: Grease aerator main shaft bearings. | <ol style="list-style-type: none">1. Attach unit to tractor for stability.2. Raise unit and place jack stands under the frame.3. Replace tines as needed.4. To replace tine wheels: Remove the entire rotor as an assembly by removing the pillow block bearings from the main frame. Proceed to disassemble the shaft and bearings as needed. |

FIGURE 1



CORE AER- ATOR

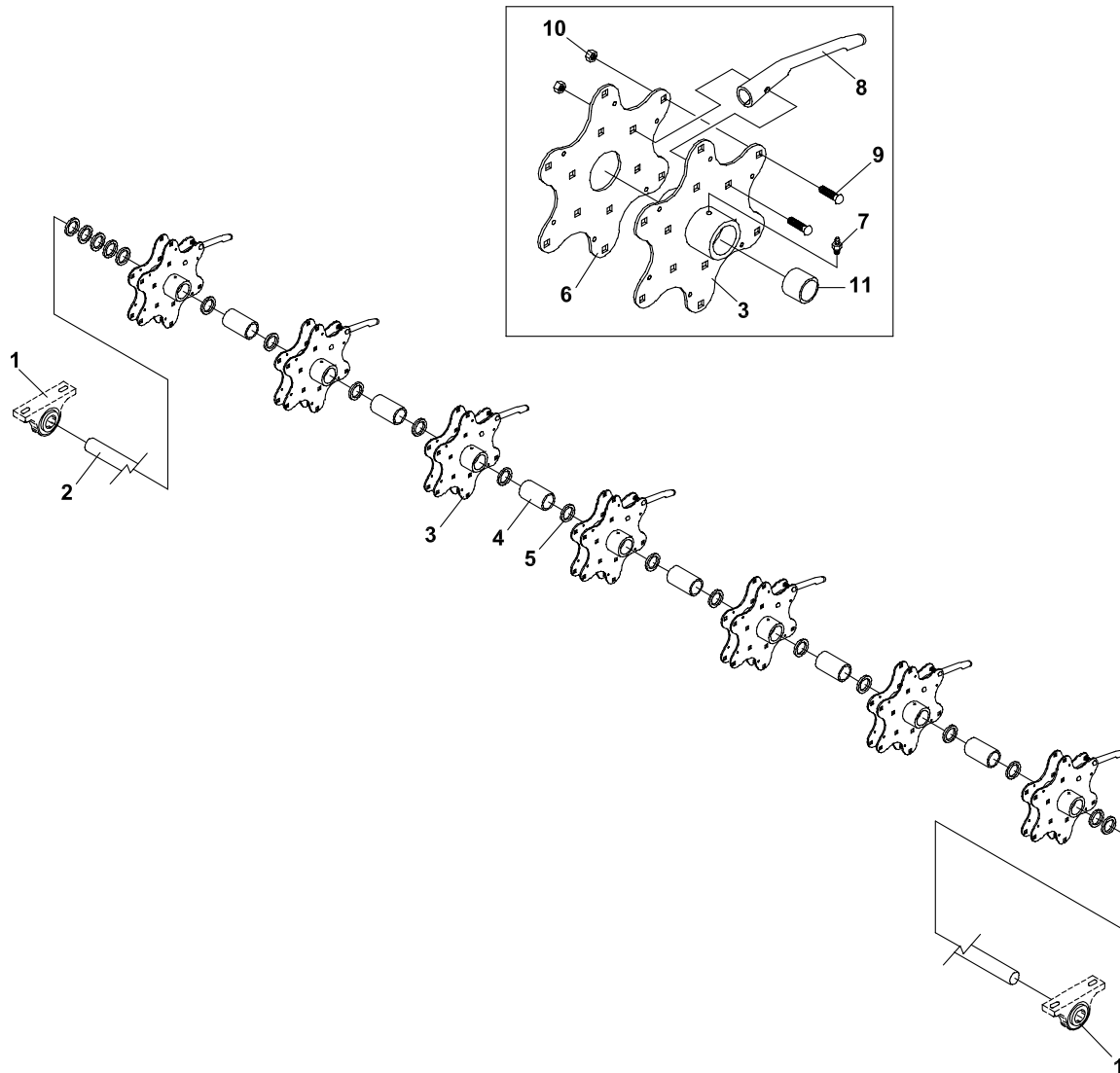
MAIN FRAME ASSEMBLY

FIGURE 1

| ITEM | PART NO. | DESCRIPTION | QTY | ITEM | PART NO. | DESCRIPTION | QTY |
|------|------------|------------------------|-----|------|----------|-------------|-----|
| 1-1 | 4165210 | S-AR240 MAIN FRAME | 1 | | | | |
| 1-2 | 6100020.7 | WEIGHT BAR, L.H. | 1 | | | | |
| 1-3 | 6100021.7 | WEIGHT BAR, R.H. | 1 | | | | |
| 1-4 | 6100015.7 | ROD, WEIGHT SECURITY | 2 | | | | |
| 1-5 | 64168-1 | COTTER-HAIRPIN | 2 | | | | |
| 1-6 | 62-540 | WEIGHT, 50# | 4 | | | | |
| 1-7 | 64141-2 | NUT-WLF 1/4-20 | 4 | | | | |
| 1-8 | 64139-04 | BOLT-WLF 1/4-20X3/4 | 13 | | | | |
| 1-9 | 55-PB22020 | BEARING, PILLOW 1-1/4" | 2 | | | | |
| 1-10 | 6100026.17 | SHIELD, REAR | 1 | | | | |
| 1-11 | 64229-05 | LOCKNUT, 1/2-13 NYLON | 4 | | | | |
| 1-12 | 64163-67 | WASHER-.516X1X12GA | 8 | | | | |
| 1-13 | 64123-24 | BLT-HEX 1/2-13X2 | 4 | | | | |
| 1-14 | 6100022.17 | MOUNTING BRACKET | 2 | | | | |
| 1-15 | 6100023.17 | SAFETY STAND | 2 | | | | |
| 1-16 | 64123-50 | BOLT-HEX 3/8-16X1 | 2 | | | | |
| 1-17 | 64229-03 | LOCKNUT-NYLON 3/8-16 | 4 | | | | |
| 1-18 | 02-PP0313 | PIN, 3/16 x 1.5/8 | 2 | | | | |
| 1-19 | 64188-03 | PIN-CLEVIS 3/8X1-1/8 | 2 | | | | |
| 1-20 | 64139-22 | BLT-WLF 1/2-13X1 | 2 | | | | |
| 1-21 | 64141-13 | NUT WLF 1/2-13 | 2 | | | | |
| 1-22 | 64123-16 | BLT-HEX 3/8-16X1-1/4 | 2 | | | | |
| 1-23 | 64163-61 | WSHR .81X.406X16GA | 4 | | | | |
| 1-24 | 202525 | DECAL-CAUTION READ MAN | 2 | | | | |
| 1-25 | 00-092 | DECAL-HANDS & FEET | 2 | | | | |
| 1-26 | 04-015 | INSERT | 4 | | | | |
| 1-27 | 04-009 | INSERT | 5 | | | | |
| * | 4116761 | LABEL-MADE IN USA | 1 | | | | |
| * | 4158620 | LABEL-STEINER | 1 | | | | |

* NOT ILLUSTRATED

FIGURE 2



CORE AER- ATOR

AXLE & DISK ASSEMBLY

FIGURE 2

| ITEM | PART NO. | DESCRIPTION | QTY | ITEM | PART NO. | DESCRIPTION | QTY |
|------|------------|---------------------------|-----|------|----------|-------------|-----|
| 2-1 | 55-PB22020 | BEARING, PILLOW 1-1/4" | 2 | | | | |
| 2-2 | 6100012 | AXLE, TINE | 1 | | | | |
| 2-3 | 4137290 | S-SPOON HUB W/ BUSHING | 7 | | | | |
| 2-4 | 6100005.7 | SPACER, SHAFT | 6 | | | | |
| 2-5 | 99-B54 | WASHER | 19 | | | | |
| 2-6 | 6100011.7 | DISC, CORE AERATOR | 7 | | | | |
| 2-7 | 85010N | S/B GREASE FITTING | 7 | | | | |
| 2-8 | 522361 | TINE, CORING 3/4 | 42 | | | | |
| | 515196 | AERATOR TINE-1/2" OPT. | 42 | | | | |
| 2-9 | 97-0514 | CARG BOLT-5/16-18 X 1-3/4 | 84 | | | | |
| 2-10 | 64229-02 | LOCKNUT-NYLON 5/16-18 | 84 | | | | |
| 2-11 | 85-B37 | BUSHING | 14 | | | | |

SCHILLER GROUNDS CARE, INC.
ONE BOB-CAT LANE
P.O. BOX 469
JOHNSON CREEK, WI 53038
920-699-2000
www.schillergc.com

