



OWNER/OPERATOR'S MANUAL & ILLUSTRATED PARTS LIST

MODEL :

75-70666 SNOWBLOWER-48" SB448

75-70667 SNOWBLOWER-54" SB454

Manual 4165 788
Rev. A 9-2010



WARNING: If incorrectly used this machine can cause severe injury. Those who use and maintain this machine should be trained in its proper use, warned of its dangers and should read the entire manual before attempting to set up, operate, adjust or service the machine.

 **SCHILLER** GROUNDS CARE

**CALIFORNIA
Proposition 65 Warning**

Diesel engine exhaust and some of its constituents are known to the State of California to cause cancer, birth defects and other reproductive harm.



WARNING

The engine exhaust from this product contains chemicals known to the State of California to cause cancer, birth defects or other reproductive harm.

**Californie Proposition 65
Avertissement**

Les échappements des moteurs diesel et certains de leurs composés sont reconnus par l'Etat de Californie pour être cancérigènes, provoquer des défauts congénitaux et d'autres dangers en matière de reproduction.



AVERTISSEMENT

L'émission du moteur de ce matériel contient des produits chimiques que l'Etat de Californie considère être cancérigènes, provoquer des défauts congénitaux et d'autres dangers en matière de reproduction.

**California Advertencia
de la Proposición 65**

El estado de California hace saber que los gases de escape de los motores diesel y algunos de sus componentes producen cáncer, defectos de nacimiento y otros daños en el proceso de reproducción humana.



ADVERTENCIA

El estado de California hace saber que los gases de escape de este producto contienen productos químicos que producen cáncer, defectos de nacimiento y otros daños en el proceso de reproducción humana.

**CALIFORNIA
Proposition 65 Warning**

Battery posts, terminals, wiring insulation, and related accessories contain lead and lead compounds, chemicals known to the State of California to cause cancer and birth defects or other reproductive harm.
WASH HANDS AFTER HANDLING.

IMPORTANT MESSAGE

Thank you for purchasing this Schiller Grounds Care, Inc. product. You have purchased a world class product, one of the best designed and built anywhere.

This product comes with an Owner / Operator's Manual. The useful life and good service you receive from this product depends to a large extent on how well you read and understand this manual. Treat this product properly and adjust it as instructed, and it will give you many years of reliable service. This manual has been provided to assist in the safe operation and servicing of your attachment.

See a Schiller Grounds Care, Inc. dealer for any service or parts needed. Schiller Grounds Care, Inc. service ensures that you continue to receive the best results possible from Schiller Grounds Care, Inc. products. You can trust Schiller Grounds Care, Inc. replacement parts because they are manufactured with the same high precision and quality as the original parts.

Schiller Grounds Care, Inc. designs and builds its equipment to serve many years in a safe and productive manner. For longest life, use this product only as directed in the manual, keep it in good repair and follow safety warnings and instructions. You'll always be glad you did.

NOTE: All photographs and illustrations in the manual may not necessarily depict the actual models or attachment, but are intended for reference only and are based on the latest product information available at the time of publication.

Familiarize yourself fully with the safety recommendations and operating procedures before putting the machine to use. Carefully read, understand and follow these recommendations and insist that they be followed by those who will use this attachment.

This manual should be kept for future reference.

Please check if you have received all the parts for your kit with the list of the bag and the list of the box.

Schiller Grounds Care, Inc.
One Bob Cat Lane
Johnson Creek, WI 53038-0469

TABLE OF CONTENTS	PAGE
DESCRIPTION / SPECIFICATIONS	2
SAFETY.....	3
SAFETY DECALS	6
ASSEMBLY INSTRUCTIONS	7
INSTALLATION	9
ADJUSTMENTS & REMOVAL	10
OPERATION.....	11
SERVICE.....	12
TROUBLESHOOTING	14
TORQUE SPECIFICATION TABLE	16
PARTS SECTION.....	17
SB448 SNOWBLOWER & CHUTE	18
SB454 SNOWBLOWER & CHUTE	22
OPTIONS	26

SNOWBLOWER

DESCRIPTION / SPECIFICATIONS

DESCRIPTION

This Snowblower is designed to facilitate clearing of large volumes of snow from sidewalks, driveways, and small parking lots.

This is a 2-stage blower. The auger feeds the snow into the blower housing. The Snowblower is belt-driven with a gearbox to the 15" open-centered auger. The hydraulic controlled chute directs the snow from side to side with fingertip control of the auxiliary hydraulics. A heavy-duty wear edge shears snow cleanly from pavement or height can be regulated with adjustable skid shoes.

The Snowblower mounts on all Steiner power units with quick hitch front lift and can be installed and removed quickly.

SPECIFICATIONS

Weight:270lbs. (SB448) & 306lbs. (SB454)
Overall Width:48" (SB448) & 58" (SB454)
Overall Height:42"
Overall Length:40"
Opening Size:21" h x 48" w (SB448) & 21" h x 58" w (SB454)
Auger:15" diameter open center
Blower:14" diameter, 4 blades
Auger Speed:230 RPM
Blower Speed:1150 RPM
Chute:6" diameter, 237 degree rotation
Height of Cut:Adjustable skid shoes 0" to 1-1/4"

NOTE: Specifications are subject to change without notice.

Record your attachment serial number and purchase date in the section reserved below. Your dealer requires this information to give you prompt, efficient service when ordering replacement parts. Use only genuine parts when replacements are required.

If warranty repairs are required please present this registration booklet and original sales invoice to your selling dealer for warranty service.

SERIAL NUMBER :
(IF APPLICABLE)

MODEL NUMBER:

PURCHASE DATE :

NOTICE !!!!

Unauthorized modifications may present extreme safety hazards to operators and bystanders and could also result in product damage.

Schiller Grounds Care, Inc. strongly warns against, rejects and disclaims any modifications, add-on accessories or product alterations that are not designed, developed, tested and approved by Schiller Grounds Care, Inc Engineering Department. Any Schiller Grounds Care, Inc product that is altered, modified or changed in any manner not specifically authorized after original manufacture-including the addition of "after-market" accessories by Schiller Grounds Care, Inc.-will result in the Schiller Grounds Care, Inc. Warranty being voided.

Any and all liability for personal injury and /or property damage caused by any unauthorized modifications, add-on accessories or products not approved by Schiller Grounds Care, Inc. will be considered the responsibility of the individual(s) or company designing and/or making such changes. Schiller Grounds Care, Inc. will vigorously pursue full indemnification and costs from any party responsible for such unauthorized post-manufacture modifications and/or accessories should personal injury and/or property damage result.



This symbol means:
**ATTENTION !
BECOME ALERT!**

Your safety and the safety of others is involved.

Signal word definitions:

The signal words below are used to identify levels of hazard seriousness. These words appear in this manual and on the safety labels attached to Schiller Grounds Care, Inc. machines. For your safety and the safety of others, read and follow the information given with these signal words and/or the symbols shown above. Regardless of the hazard be extremely careful.



DANGER Indicates an imminently hazardous situation which, if not avoided, **WILL** result in death or serious injury.



WARNING Indicates a potentially hazardous situation which, if not avoided, **COULD** result in death or serious injury.



CAUTION Indicates a potentially hazardous situation which, if not avoided, **MAY** result in minor or moderate injury. It may also be used to alert against unsafe practices or property damage.



CAUTION Used without the safety alert symbol indicates a potentially hazardous situation which, if not avoided, **MAY** result in property damage.

Careful operation is your best insurance against an accident. Read this section carefully before operating the vehicle and accessory. This accessory is capable of amputating hands and feet and throwing objects. Failure to observe the following safety instructions could result in serious injury. All operators, no matter how experienced they may be, should read this and other manuals related to the vehicle and accessory before operating. It is the owner's legal obligation to instruct all operators in safe operation of the accessory.

GLOSSARY:

In this manual, right and left sides are determined by sitting on the seat of the vehicle facing forward.

In this manual, "accessories" means attachments (snowblower, rotary broom, blade etc.) that you install on the vehicle.

TRAINING:

1. Read this owner's manual carefully. Be thoroughly familiar with the controls and proper use of the vehicle and accessory. Know how to stop the unit and disengage the controls quickly.
2. Never allow children to operate the vehicle nor the accessory. Never allow adults to operate the vehicle nor the accessory without proper instructions.
3. No one should operate the vehicle nor the accessory while intoxicated or while taking medication that impairs the senses or reactions.
- 4.Keep the area of operation clear of all people, particularly small children and pets.

PREPARATION:

- 1.Thoroughly inspect the area where the accessory is to be used and remove door mats, all foreign objects and the like.
- 2 Disengage all clutches and shift into neutral before starting engine.
3. Do not operate the accessory without wearing adequate winter outer garments. Avoid loose fitting clothing that can get caught in moving parts. Wear footwear that will improve footing on slippery surfaces.
4. Never attempt to make any adjustments while the engine (motor) is running (except when specifically recommended by manufacturer).
5. Let the vehicle and accessory adjust to outdoor temperatures before using.
6. Never use an accessory without proper guards, plates, or other safety protective devices in place
7. Always make sure to wear the appropriate safety equipment required (glasses, muffs, mask...) for each type of product. See operation section.
8. Always make sure of having safe traction on the vehicle by using the recommended accessories

OPERATION:

1. Do not put hands or feet near, under or inside rotating parts.
2. Exercise extreme caution when operating on or crossing gravel drives, walks or roads. Stay alert for hidden hazards or traffic. Do not carry passengers.
3. After striking a foreign object, stop the engine (motor), disconnect the wire from the spark plug(s) and keep wire away to prevent accidental starting. Thoroughly inspect the accessory for any damage and repair damage before restarting and using the accessory.
4. If the unit should start to vibrate abnormally, stop the engine (motor) and check immediately for the cause. Vibration is generally a warning of trouble.
5. Take all possible precautions when leaving the vehicle unattended. Disengage the power take-off, lower the attachment, place the transmission into neutral, set the parking brake, stop the engine and remove the contact key.
6. Never use the accessories across the face of slopes, go from top to bottom. Exercise extreme caution when using equipment on slopes. Do not attempt to clear a steep slope.
7. Never tolerate bystanders in the working zone. Never use an accessory in the direction of bystanders, it might throw gravel or debris that can hurt people or damage property.
8. Never operate the accessory at high transport speeds on slippery surfaces. Use care when backing up.
9. Do not carry passengers.
10. Disengage power to the accessory when it is transported or not in use.
11. Never operate the accessory without good visibility or light.

MAINTENANCE AND STORAGE

1. When cleaning, repairing or inspecting the vehicle and accessory, make certain that all moving parts have stopped. Disconnect wire from the spark plug(s) and keep wire away to prevent accidental starting.
2. Check all the bolts and components at frequent intervals to make sure that they are properly tightened.
3. Always refer to the owner's manual when you store the accessory and vehicle for a prolonged or an unspecified length of time.
4. Maintain or replace safety and instruction labels, as necessary.
5. Let the engine run for a few minutes after cleaning snow in order to prevent the rotary parts from freezing.

REPLACE IF DECALS ARE DAMAGED SEE PARTS BREAKDOWN FOR DECAL LOCATION

DECAL #105126



To avoid serious injury:
Keep hands, feet & clothing away from rotating auger while engine is running.

DECAL #105127



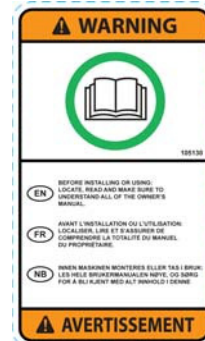
To avoid serious injury:
Keep hands out of this discharge chute while engine is running.

DECAL #105128



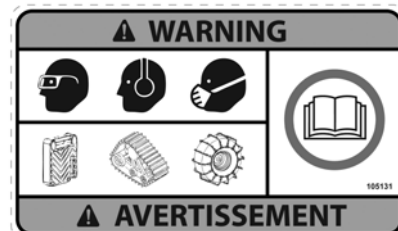
To avoid injury from drive belt:
Keep hands, feet & clothing away.
Do not attempt to install or remove drive belt without reading owner's manual.

DECAL #105130



Before installing or using:
Locate, read and make sure to understand all of the owner's manual.

DECAL #105131



Refer to owner's manual about wearing safety glasses, ear muffs and mask. Refer to owner's manual for use of counter weights, cat tracks and tire chains.

SNOWBLOWER

Tools Required:

Wrench: 9/16, 7/16", 1/2"

Ratchet

Socket 9/16", 7/16"

Pliers

Axle stands

Allen key

Refer to parts breakdown section for parts identification

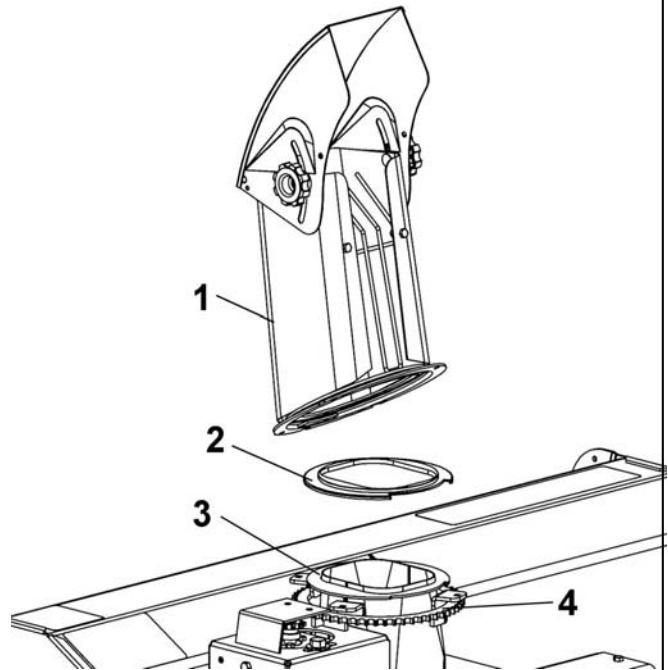
Step 1

Snowblower Preparation:

1. Remove the snowblower from the shipping crate.
2. Remove the support plates from skid shoes.

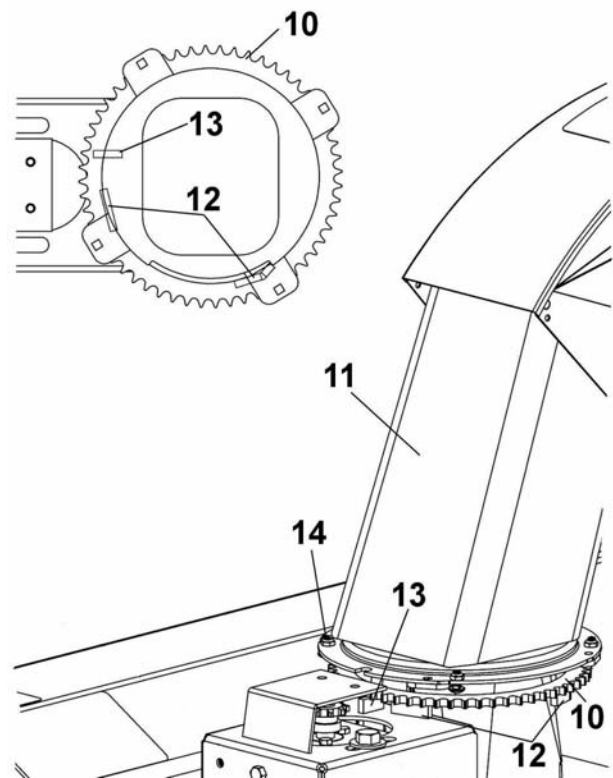
Chute Installation:

1. Remove the packaging around the rotation sprocket (item 4).
2. Install the rotation ring (item 2) over opening (item 3) as shown and align the notches.
3. Place the chute (item 1) (facing the rear) and clip the back over the rotation ring then turn the chute towards the front to lock into place.



Sprocket installation:

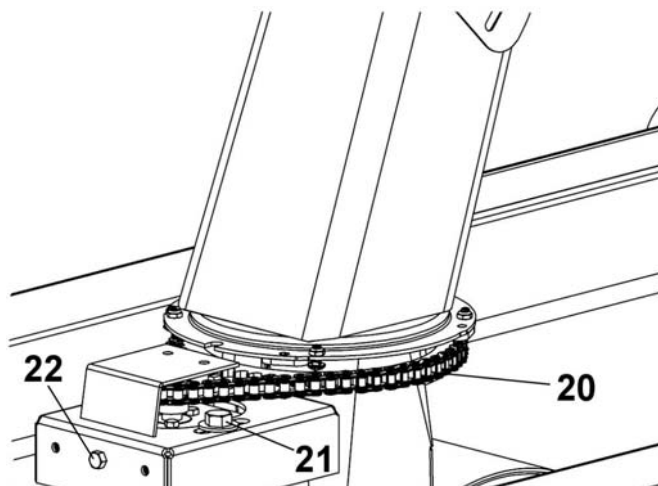
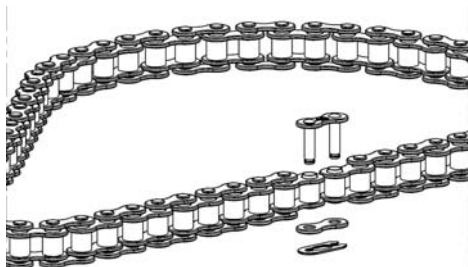
1. Turn the rotation sprocket (item 10) and the chute (item 11) in position as shown (Make sure the sprocket stoppers (item 12) and the rotation stopper (item 13) are placed in the same position as shown).
2. Install the four carriage bolts with four nylon lock nuts (item 14).
3. Try turning the chute manually from one side to the other, if the chute's discharge opening can be turned in the direction of the operator, the sprocket is not properly positioned. Repeat the procedure.



SNOWBLOWER

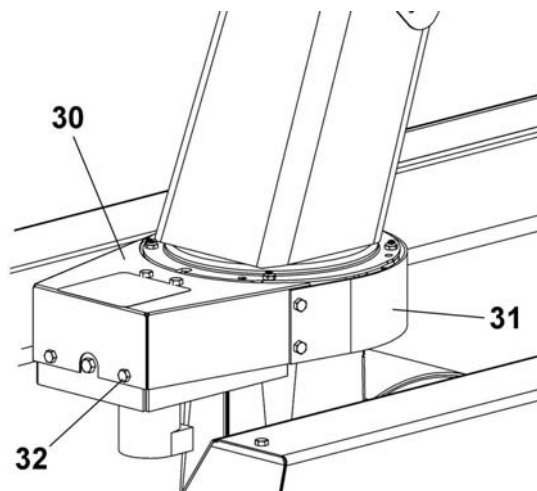
Chain installation:

1. Loosen the two hydraulic motor support bolts (item 21) and the tensioning bolt (item 22).
2. Install the chain (item 20) as shown.
3. Tighten the tensioning bolt of the hydraulic motor and lock into place with a nylon lock nut 1/4".
4. Tighten the two bolts of the hydraulic motor support.



Guard installation:

1. Install the chute rotation guards (item 30 & 31) with the seven hex bolts 1/4" n.c x 1/2" (item 32).

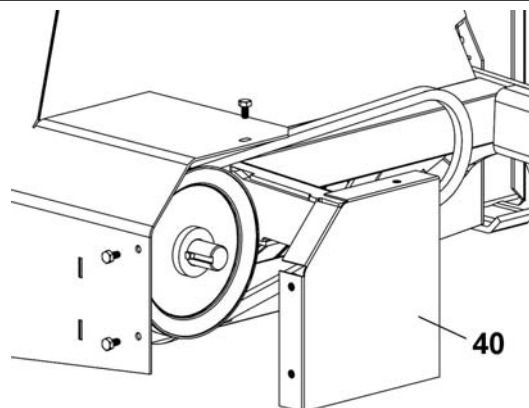


Drive belt installation:

1. Remove the drive pulley shield (item 40) and install the proper drive belt for the power unit.

Model 430: 4165834
Model 235: 4165850

2. Replace shield.



Extended wings with drift cutters installation:

For the SB454 model only.
Follow the instructions in box.

SNOWBLOWER

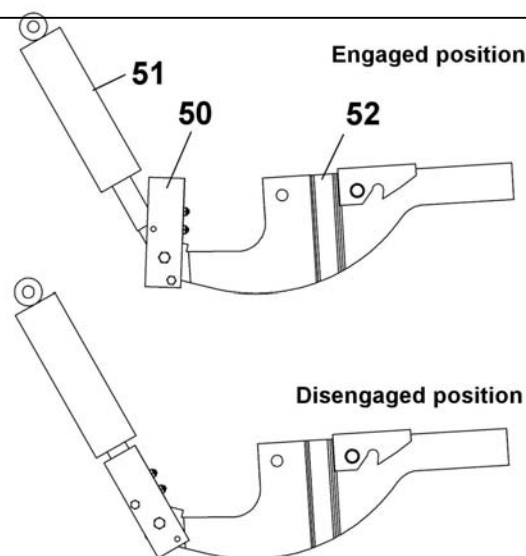
STEP 2

SNOWBLOWER INSTALLATION

INSTRUCTIONS:

For model 430 in order to prevent the snowblower from starting without the P.T.O. being engaged in the low position. Install hydraulic cylinder stopper (item 50) in the engaged position as shown. To do so, remove the pin between the hydraulic cylinder (item 51) and the front lift (item 52). Install the stopper. 1. Attach snowblower to the power unit.

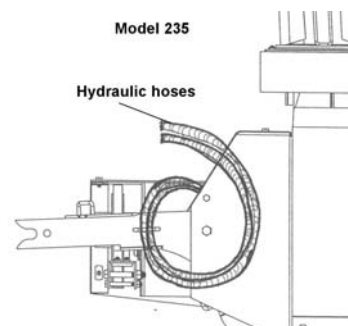
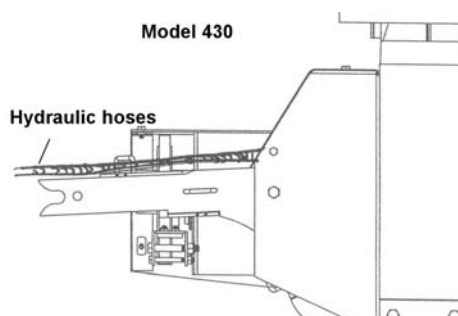
2. Be sure drive belt is in place over the left hitch arm.
3. Drive power unit into the hitch arms and latch the quick hitch handle.
4. Stop the engine.



⚠ WARNING

TO PREVENT INJURIES: STOP THE MOTOR. APPLY PARKING BRAKE. REMOVE THE IGNITION KEY. DISCONNECT THE WIRE FROM THE SPARK PLUG(S) AND KEEP AWAY FROM SPARK PLUG(S) TO PREVENT ACCIDENTAL STARTING.

5. Install the drive belt and adjust drive pulley position (see adjustment section).
6. Attach the two hydraulic hoses to the quick couplers on the tractor.



NOTE: If the rotation does not match the lever operation, the hoses may be reversed.

7. Install the drive belt to the tractor. (See tractor's manual for belt tensioning specifications).
8. A weight bar with four weights is required on 4-wheel drive units whenever the snowblower is installed. Install according to weight bar instructions

⚠ DANGER

IF THE SNOWBLOWER STARTS WITHOUT ENGAGING THE P.T.O. STOP THE ENGINE. IMPROPER TENSION.

9. For models without an electric clutch, go to a safe location, place a security barrier all around the snowblower. Raise the snowblower to it's highest point and then lower to it's lowest point. If the snowblower starts without engaging the P.T.O., lower the drive belt tension according to the power unit manual.

⚠ WARNING

TO PREVENT INJURIES: THE PERSON WHO INSTALLS THE DRIVE MECHANISM HAS THE RESPONSIBILITY TO MAKE SURE THAT WHEN THE CLUTCH IS DISENGAGED THAT ALL MOVING PARTS STOP. FOR MORE INFORMATION, DO NOT HESITATE TO CONTACT THE TECHNICAL SUPPORT.

⚠ CAUTION

Never use the snowblower without the belt guard.

SNOWBLOWER

STEP 3 ADJUSTMENTS

Drive pulley adjustment:

NOTE: Place the tractor horizontally on a flat surface.

1. For model 235:

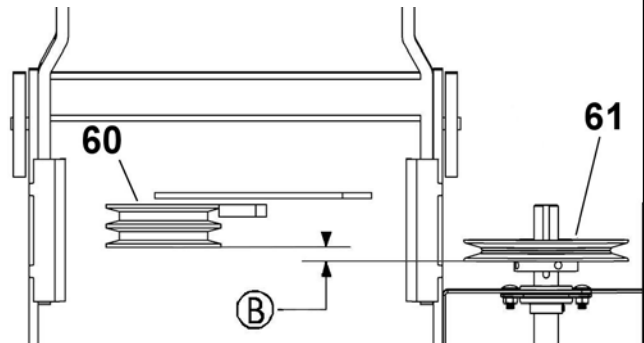
The tractor pulley (item 60) and the snowblower pulley (item 61) must be well aligned (this is to ensure a longer life span of the belt).

For model 430:

The tractor pulley and the snowblower pulley must slightly misaligned (about 1/16" to 1/8" (item B)). Make sure there is no contact between the two belts when they are in the highest position. 2. Do the same tests as in snowblower installation section, item 9.

If the snowblower starts and proper tension is used, the pulleys are misaligned too much.

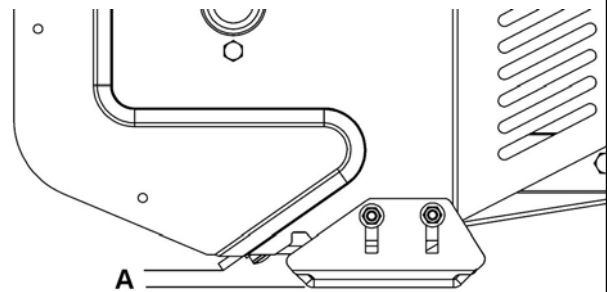
If at the highest position the two belts come into contact with each other, There is not enough space between the pulleys.



Skid shoe adjustment:

LEVEL PAVED SURFACE: Adjust skid shoes to allow 3/16" to 1/4" or 5mm to 7mm clearance (A) between cutting edge and surface.

UNEVEN OR GRAVEL SURFACE: Adjust skid shoes to allow 1/2" to 5/8" or 13mm to 16mm clearance (A) between cutting edge and surface.



STEP 4 SNOWBLOWER REMOVAL INSTRUCTIONS:

1. Lower the snowblower and stop engine

⚠ WARNING

TO PREVENT INJURIES: STOP THE MOTOR. APPLY PARKING BRAKE. REMOVE THE IGNITION KEY.

DISCONNECT THE WIRE FROM THE SPARK PLUG (S) AND KEEP AWAY FROM SPARK PLUG(S) TO PREVENT ACCIDENTAL STARTING.

2. Disconnect the two hydraulic hoses and install dust covers.
3. Remove the drive belt and release the quick hitch. Start the engine and back out carefully.
4. Remove the four weights from the weight bar for the 4 wheel drive unit.
5. For model 430, move the stopper into the disengaged position. (See step 2).

SNOWBLOWER

STEP 5

OPERATIONING INSTRUCTIONS:

1. For the 430 model, put the stopper in the engaged position. (See Installation step 2).
2. Make sure the snowblower is clear of snow before engaging the snowblower.
3. Make sure that the auger and impeller operate freely.
4. Start the tractor engine

IMPORTANT: USE FULL ENGINE R.P.M. WHEN REMOVING WET OR STICKY SNOW. LOW R.P.M. WILL TEND TO PLUG THE CHUTE.

5. Engage P.T.O. slowly and maintain engine speed at 3/4 to full throttle.
6. Low range works best for most conditions. Adjust speeds to match snow conditions. The snowblower works best with plenty of snow being fed into the blades. In light snow (4" to 6") increase travel speed.
7. Float position may be used, but carrying some of the weight with the power unit gives better traction. May require frequent lifting and lowering on 4-wheel drive units. If drive belts slips, adjust drive belt tension according to power unit manual.
8. Keep the chute rotator chain tight.
9. Rotate chute using the auxiliary hydraulic control lever. Try to blow snow with the wind on windy days.
10. Set the angle of the deflector according to the distance the snow must be thrown and to prevent property damage. To change the deflector angle, loosen the two deflector knobs & adjust the deflector to the appropriate angle and retighten the two knobs securely. If equipped with an Electric Deflector Kit, use the toggle switch for up or down deflector movement.
11. When removing snow, do not use the snowblower as a dozer blade to push snow. Allow snowblower to ingest snow at its own speed. If the speed of your tractor is too fast, the snowblower may become overloaded and plug. For best results, raise the snowblower and remove a top layer of snow. A second pass with the snowblower will remove the remaining snow.

⚠ WARNING

CLEARING A CLOGGED DISCHARGE CHUTE:

Hand contact with the rotating impeller inside the discharge chute is the most common cause of injury associated with snowblowers. Never use your hand to clean out the discharge chute. **To clear the chute:**

1. Lower snowblower to the ground and set parking brake.
2. SHUT THE ENGINE OFF & REMOVE KEY!
3. Wait 10 seconds to be sure that **all moving parts** such as the impeller blades have stopped moving.
4. Disconnect wire from the spark plug(s) and keep wire away to prevent accidental starting.
5. Always use a clean-out tool of at least 36" in (1 m) length, NEVER YOUR HANDS.

ASSURE CLEAR DISTANCE IN THE DIRECTION OF THROWING SNOW. OBJECTS CAN BE PRO-

⚠ WARNING

PELLED FROM BLOWER CAUSING POSSIBLE DAMAGE TO PROPERTY OR INJURY TO BYSTANDERS.

BE ALERT! WATCH FOR BURIED OBJECTS IN THE SNOW WHICH COULD BE THROWN OR

⚠ CAUTION

CAUSE DAMAGE TO MACHINE.

NEVER TRAVEL AT SPEEDS THAT WOULD CAUSE DAMAGE TO THE MACHINE OR INJURY TO THE

⚠ CAUTION

OPERATOR IF THE MACHINE WERE TO BE STOPPED SUDDENLY BY AN IMMOVABLE OBJECT. READ THE TRACTOR OWNER'S MANUAL CAREFULLY. BE THOROUGHLY FAMILIAR WITH THE

⚠ WARNING

CONTROLS & PROPER USE OF THE ATTACHMENT. KNOW HOW TO STOP THE ATTACHMENT & DISENGAGE THE CONTROLS QUICKLY.

SERVICE SCHEDULE

⚠ WARNING

TO PREVENT INJURIES: STOP THE MOTOR. APPLY PARKING BRAKE. REMOVE THE IGNITION KEY. DISCONNECT THE WIRE FROM THE SPARK PLUG(S) AND KEEP AWAY FROM SPARK PLUG(S) TO PREVENT ACCIDENTAL STARTING.

Daily:

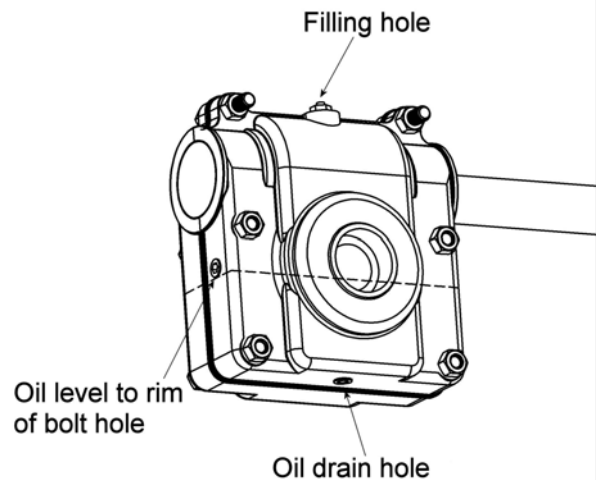
- Check for any damage on the hydraulic hose. The hydraulic hose must be replaced if there is any small damage.
- Check for any signs of loose bolts and tighten as needed. Check mounting bolts at frequent intervals for proper tightness in order to prevent costly repairs. Make sure your snowblower is in safe working condition.
- Check chute rotation chain for excess slack.
- Check skid shoe (see installation section).
- Check from time to time the wearing on the cutting edge to make sure you do not wear out the base of the snowblower's chassis. This cutting edge is reversible. All you have to do is unscrew the bolts and turn the cutting edge, reinstall and tighten the bolts securely.

50 Hours:

- Check drive belts for proper tension and signs of cracking.

100 hours:

- Check the oil in the gear box annually. If necessary, add AGMA 5 EP or SAE 90 oil. The gear box should have a total of 155 ml of oil or filled to the rim of the bolt hole when installed on the snowblower. (see figure)



AUGERS AND FAN SHEAR BOLT REPLACEMENT

Shear bolts are to be considered a preventive measure and not an assured protection. Operator vigilance is required. Thoroughly inspect the areas where the snowblower is to be used and remove all foreign objects.

To avoid damage to the snowblower:

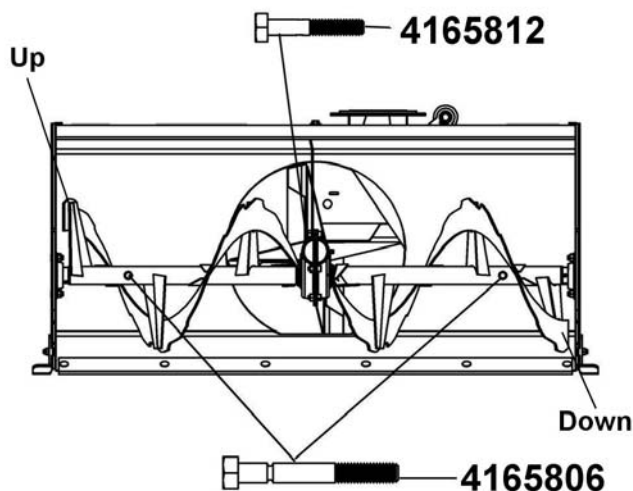
Use only the original shear bolts (grooved bolts).

#4165806 in bags of 10 for the augers.

#4165812 in bags of 10 for the fan.

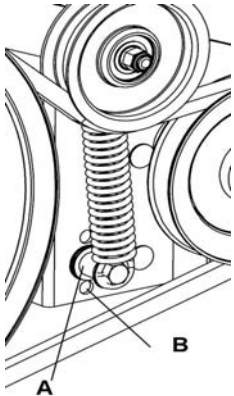
The use of any other shear bolt will not insure any protection and may void the warranty.

IMPORTANT: IT IS VERY IMPORTANT TO REPLACE THE AUGERS IN THE SAME POSITION AS SHOWN IN THE DRAWING BEFORE INSTALLING THE SHEAR BOLTS. ONE SIDE AUGER SHOULD BE OPPOSITE OF THE OTHER SIDE.
END OF SEASON STORAGE



- Clean snowblower and subframe thoroughly and repaint all parts from which paint has worn.
- List the replacement parts that will be needed for the next season.
- Store the snowblower and the subframe in a dry place.
- Follow the instructions in the Lubrication section.

* Please refer to parts breakdown section for parts identification.

TROUBLESHOOTING		
PROBLEM	POSSIBLE CAUSES	CORRECTIVE ACTION
One section or both sections of the auger stops turning.	Shear bolts are probably broken.	Replace shear bolt (for identification, see parts list "Snowblower").
Fan stops turning.	Shear bolt is probably broken.	Replace shear bolt (for identification, see parts list "Snowblower").
Snowblower stops turning.	One of the two belts is probably damaged or broken.	Check both belts and replace damaged belt(s) (for instructions, see Maintenance section, Installation, Adjustment and Replacement section).
Snowblower belt has burn marks in specific places or the belt slips.	<p>Lack of tension on belt.</p> <p>Snowblower engaged when plugged.</p>	<p>Remove the bolt, sleeve and the spring from the original hole (item A) and reinstall them in the lower hole (item B).</p>  <p>Make sure the auger & the fan are not frozen or plugged before engaging.</p>
Chute plugs easily.	<p>Tractor engine turning too slowly.</p> <p>Advancing too quickly with tractor.</p>	<p>Run engine at full throttle during snowblowing operation.</p> <p>Allow snowblower to ingest snow at its own speed.</p>
Chute rotation is difficult.	Dirt or ice may be underneath chute.	Dismount chute (see installation section). Clean the base of chute and the rotation ring. Lubricate & re-install.

PROBLEM	POSSIBLE CAUSES	CORRECTIVE ACTION
Snowblower digs into ground.	Ground is not frozen or too soft.	Adjust skid shoes lower so they may better support the snowblower.
Snowblower vibrates or is abnormally noisy.	Damaged pulley. Damaged bearing. Damaged fan. Damaged auger.	Replace pulley. Replace bearing. Dismount & repair or replace fan. Replace auger.
Snowblower starts without the PTO engaged on model 430	Too much tension on the drive belt.	Lower the tension on the tractor's tensionner. See tractor's manual for tensioning instructions.
Drive belt has burn marks in specific places or belt slips.	Lack of tension on the belt.	See tractor's manual for tensioning instructions.

TORQUE SPECIFICATION TABLE

GENERAL TORQUE SPECIFICATION TABLE

USE THE FOLLOWING TORQUES WHEN SPECIAL TORQUES ARE NOT GIVEN

NOTE: These values apply to fasteners as received from supplier, dry or when lubricated with normal oil. They do not apply if special graphited or moly disulphide greases or other extreme pressure lubricants are used. This applies to both UNF and UNC threads.

SEE Grade No.	2				5				8 *			
BOLT HEAD IDENTIFICATION MARKS AS PER GRADE NOTE MANUFACTURING	TORQUE				TORQUE				TORQUE			
BOLT SIZE	POUNDS FEET		NEWTON-METERS		POUNDS FEET		NEWTON-METERS		POUNDS FEET		NEWTON-METERS	
Inches Millimetre	Min.	Max.	Min.	Max.	Min.	Max.	Min.	Max.	Min.	Max.	Min.	Max.
1/4" 6.35	5	6	6.8	8.13	9	11	12.2	14.9	12	15	16.3	30.3
5/16" 7.94	10	12	13.6	16.3	17	20.5	23.1	27.8	24	29	32.5	39.3
3/8" 9.53	20	23	27.1	31.2	35	42	47.5	57	45	54	61	73.2
7/16" 11.11	30	35	40.7	47.4	54	64	73.2	86.8	70	84	94.9	113.9
1/2" 12.7	45	52	61	70.5	80	96	108.5	130.2	110	132	149.2	179
9/16" 14.29	65	75	88.1	101.6	110	132	149.2	179	160	192	217	260.4
5/8" 15.88	95	105	128.7	142.3	150	180	203.4	244.1	220	264	298.3	358

METRIC BOLT TORQUE SPECIFICATIONS

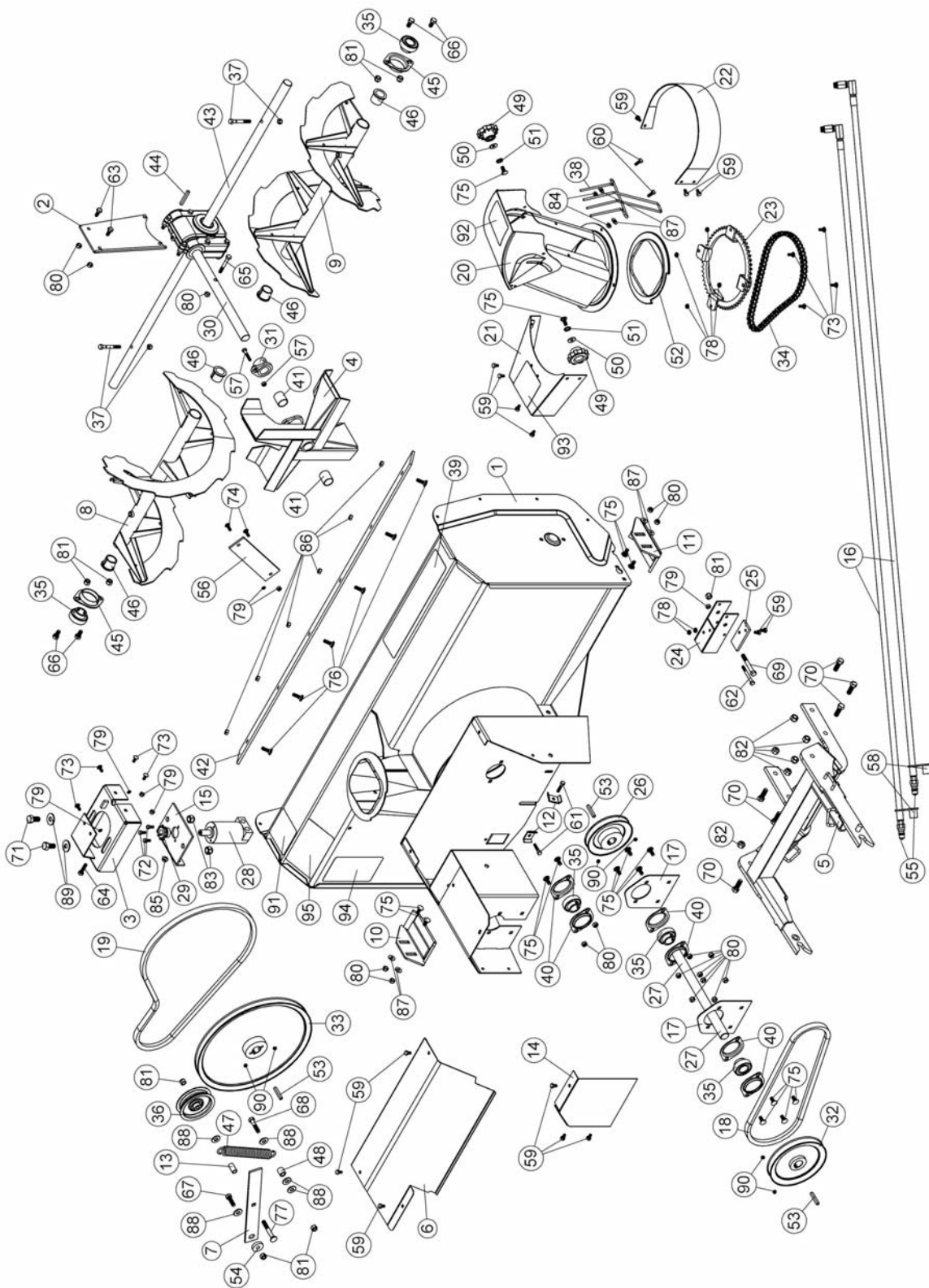
COARSE THREAD

FINE THREAD

Size Screw	Grade No.	Pitch (mm)	Pounds Feet	Newton-Meters	Pitch (mm)	Pounds Feet	Newton-Meters
M6	4T	1.00	3.6 - 5.8	4.9 - 7.9	-	-	-
	7T		5.8 - 9.4	7.9 - 12.7		-	-
	8T		7.2 - 10	9.8 - 13.6		-	-
M8	4T	1.25	7.2 - 14	9.8 - 19	1.00	12 - 17	16.3 - 23
	7T		17 - 22	23 - 29.8		19 - 27	25.7 - 36.6
	8T		20 - 26	27.1 - 35.2		22 - 31	29.8 - 42
M10	4T	1.50	20 - 25	27.1 - 33.9	1.25	20 - 29	27.1 - 39.3
	7T		34 - 40	46.1 - 54.2		35 - 47	47.4 - 63.7
	8T		38 - 46	51.5 - 62.3		40 - 52	54.2 - 70.5
M12	4T	1.75	28 - 34	37.9 - 46.1	1.25	31 - 41	42 - 55.6
	7T		51 - 59	69.1 - 79.9		56 - 68	75.9 - 92.1
	8T		57 - 66	77.2 - 89.4		62 - 75	84 - 101.6
M14	4T	2.00	49 - 56	66.4 - 75.9	1.50	52 - 64	70.5 - 86.7
	7T		81 - 93	109.8 - 126		90 - 106	122 - 143.6
	8T		96 - 109	130.1 - 147.7		107 - 124	145 - 168
M16	4T	2.00	67 - 77	90.8 - 104.3	1.50	69 - 83	93.5 - 112.5
	7T		116 - 130	157.2 - 176.2		120 - 138	162.6 - 187
	8T		129 - 145	174.8 - 196.5		140 - 158	189.7 - 214.1
M18	4T	2.00	88 - 100	119.2 - 136	1.50	100 - 117	136 - 158.5
	7T		150 - 168	203.3 - 227.6		177 - 199	239.8 - 269.6
	8T		175 - 194	237.1 - 262.9		202 - 231	273.7 - 313
M20	4T	2.50	108 - 130	146.3 - 176.2	1.50	132 - 150	178.9 - 203.3
	7T		186 - 205	252 - 277.8		206 - 242	279.1 - 327.9
	8T		213 - 249	288.6 - 337.4		246 - 289	333.3 - 391.6

PARTS SECTION

PARTS BREAKDOWN
SB448 SNOWBLOWER



SNOWBLOWER

PARTS LIST SB448 SNOWBLOWER

Ref. Réf.	English description	Qty. Qté.	Part # Pièce #
1	Frame 48"	1	4165817.2
2	Gear box support	1	4165818.7
3	Engine support	1	4165819.7
4	Fan	1	4165820.7
5	Hitch	1	4165821.7
6	Belt guard	1	4165822.2
7	Bender	1	4165823.7
8	Auger 48" left	1	4165824.7
9	Auger 48" right	1	4165825.7
10	Left skid shoe	1	4165826.7
11	Right skid shoe	1	4165827.7
12	Attaching plate	2	4165828.7
13	Sleeve	1	4165829.7
14	Guard	1	4165830.2
15	Support plate	1	4165831.7
16	Hose 76"	2	4165832
17	Reinforcement plate	2	4165833.7
18	V-belt, MXV5-480	1	4165834
19	V-belt, MXV5-570	1	4165835
20	Chute	1	4165836.2
21	Chain guard	1	4165837.2
22	Chain guard	1	4165838.2
23	Rotation sprocket	1	4165839
24	Lift stopper	1	4165840.7
25	Protection plate	1	4165841
26	V pulley	1	4165813
27	Transmission shaft	1	4165814
28	Hydraulic motor 32cc	1	4165815
29	Sprocket with set screw	1	4165816
30	Gear box left rotation	1	4165807
31	Shear plate	1	4165803.7
32	V pulley	1	4165802

O/L = Obtain Locally

SNOWBLOWER

PARTS LIST SB448 SNOWBLOWER

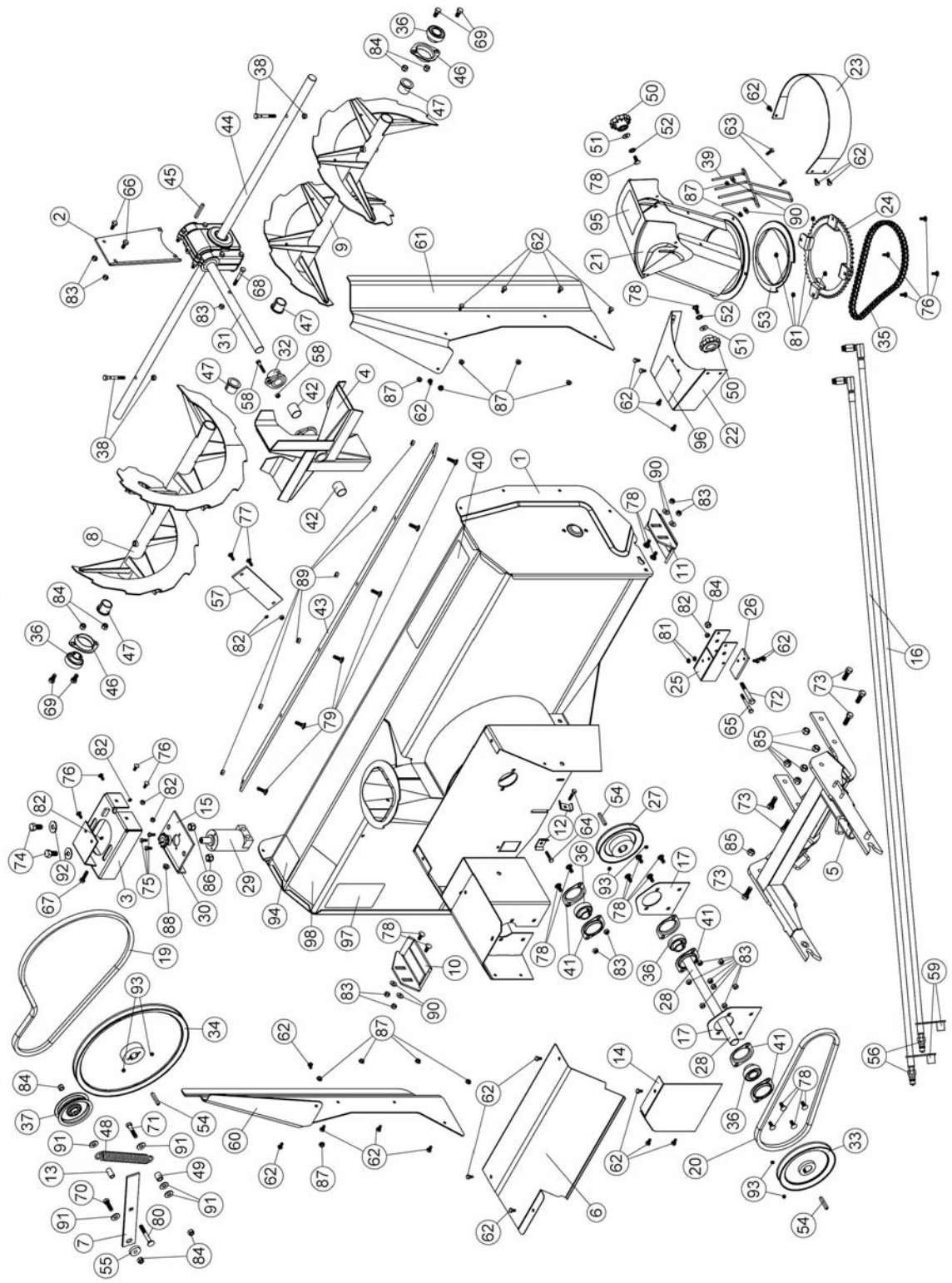
Ref. Réf.	English description	Qty. Qté.	Part # Pièce #
33	V pulley with set screw	1	4165810
34	Roller chain #40 x 64 /w connecting link	1	4165798
35	Bearing with set screw	5	4165796
36	Flat pulley	1	4165797
37	Shear bolt / N.I.L.N. (auger) pkg-10	2	4165806
38	Hand guard	1	4165791
39	Decal Steiner	1	4158620
40	Flangette	6	4165794
41	Oil lite bushing	2	4165799
42	Cutting edge 48"	1	4165848.7
43	Shaft 48"	1	4165808
44	Key 1/4" x 1/4" x 2"	1	64164-13
45	Flangette	2	4165795
46	Rotation bushing	4	4165805
47	Spring	1	4165800
48	Sleeve	1	4165801
49	Knob	2	4165792
50	Nylon flat washer 11/32"	2	4165789
51	Nylon flat washer 7/16"	2	4165790
52	Rotation ring	1	4165804
53	Key 1/4" x 1/4" x 1 3/4"	3	64164-40
54	Flange washer	1	4165793
55	Quick nipple 1/4" ISO B	2	4165847
56	Reinforcement	1	4165811.7
57	Shear bolt / N.I.L.N. (fan) pkg-10	1	4165812
58	Rubber boot	2	4165851
59	Hex. bolt 1/4" n.c. x 1/2"	15	O/L
60	Hex. bolt 1/4" n.c. x 3/4"	2	O/L
61	Hex. bolt 1/4" n.c. x 1 1/4"	2	O/L
62	Hex. bolt 1/4" n.c. x 2 1/2"	1	O/L
63	Hex. bolt 5/16" n.c. x 3/4"	2	O/L
64	Hex. bolt 5/16" n.c. x 1 1/4"	1	O/L

O/L = Obtain Locally

PARTS LIST SB448 SNOWBLOWER

Ref. Réf.	English description	Qty. Qté.	Part # Pièce #
65	Hex. bolt 5/16" n.c. x 2 1/4" GR8	1	O/L
66	Hex. bolt 3/8" n.c. x 3/4"	4	O/L
67	Hex. bolt 3/8" n.c. x 1 1/4"	1	O/L
68	Hex. bolt 3/8" n.c. x 1 3/4"	1	O/L
69	Hex. bolt 3/8" n.c. x 2 3/4"	1	O/L
70	Hex. bolt 7/16" n.c. x 1 1/4"	6	O/L
71	Hex. bolt 1/2" n.c. x 1"	2	O/L
72	Hex. bolt M6 x 1.00 x 16	3	O/L
73	Carriage bolt 1/4" n.c. x 5/8"	8	O/L
74	Carriage bolt 1/4" n.c. x 3/4"	2	O/L
75	Carriage bolt 5/16" n.c. x 3/4"	16	O/L
76	Carriage bolt 5/16" n.c. x 1"	6	O/L
77	Carriage bolt 3/8" n.c. x 2 3/4"	1	O/L
78	Nylon insert lock nut 1/4" n.c. (thin)	6	O/L
79	Nylon insert lock nut 1/4" n.c.	7	O/L
80	Nylon insert lock nut 5/16" n.c.	17	O/L
81	Nylon insert lock nut 3/8" n.c.	8	O/L
82	Nylon insert lock nut 7/16" n.c.	6	O/L
83	Nylon Insert lock Nut 1/2" n.c.	2	O/L
84	Flange nut 1/4" n.c.	2	O/L
85	Flange nut 5/16" n.c.	1	O/L
86	Stover lock nut 5/16" n.c.	6	O/L
87	Flat washer 5/16" hole	6	O/L
88	Flat washer 7/16" hole	5	O/L
89	Flat washer 1/2" hole	2	O/L
90	Hex. socket set screw 5/16" n.c. x 5/16"	6	O/L
91	Decal danger auger	1	105126
92	Danger decal chute	1	105127
93	Decal danger belts	1	105128
94	Decal read instructions	1	105130
95	Decal warning safety	1	105131

PARTS BREAKDOWN
SB454 SNOWBLOWER



SNOWBLOWER

PARTS LIST SB454 SNOWBLOWER

Ref. Réf.	English description	Qty. Qté.	Part # Pièce #
1	Frame 54"	1	4165842.2
2	Gear box support	1	4165818.7
3	Engine support	1	4165819.7
4	Fan	1	4165820.7
5	Hitch	1	4165821.7
6	Belt guard	1	4165822.2
7	Bender	1	4165823.7
8	Auger 54" left	1	4165843.7
9	Auger 54" right	1	4165844.7
10	Left skid shoe	1	4165826.7
11	Right skid shoe	1	4165827.7
12	Attaching plate	2	4165828.7
13	Sleeve	1	4165829.7
14	Guard	1	4165830.2
15	Support plate	1	4165831.7
16	Hose 76"	2	4165832
17	Reinforcement plate	2	4165833.7
18	V-belt, MXV5-480	1	4165834
19	V-belt, MXV5-570	1	4165835
20	V-belt, MXV5-510	1	4165850
21	Chute	1	4165836.2
22	Chain guard	1	4165837.2
23	Chain guard	1	4165838.2
24	Rotation sprocket	1	4165839
25	Lift stopper	1	4165840.7
26	Protection plate	1	4165841
27	V pulley	1	4165813
28	Transmission shaft	1	4165814
29	Hydraulic motor 32cc	1	4165815
30	Sprocket with set screw	1	4165816
31	Gear box left rotation	1	4165807
32	Shear plate	1	4165803.7
33	V pulley	1	4165802

O/L = Obtain Locally

SNOWBLOWER

PARTS LIST SB454 SNOWBLOWER

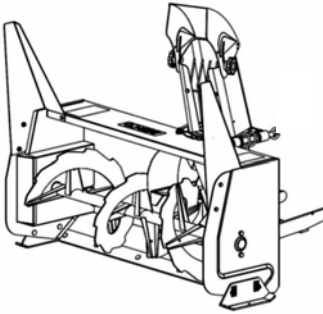
Ref. Réf.	English description	Qty. Qté.	Part # Pièce #
34	V pulley with set screw	1	4165810
35	Roller chain #40 x 64 /w connecting link	1	4165798
36	Bearing with set screw	5	4165796
37	Flat pulley	1	4165797
38	Shear bolt / N.I.L.N. (auger) pkg-10	2	4165806
39	Hand guard	1	4165791
40	Decal Steiner	1	4158620
41	Flangette	6	4165794
42	Oil lite bushing	2	4165799
43	Cutting edge 54"	1	4165849.7
44	Shaft 54"	1	4165809
45	Key 1/4" x 1/4" x 2"	1	64164-13
46	Flangette	2	4165795
47	Rotation bushing	4	4165805
48	Spring	1	4165800
49	Sleeve	1	4165801
50	Knob	2	4165792
51	Nylon flat washer 11/32"	2	4165789
52	Nylon flat washer 7/16"	2	4165790
53	Rotation ring	1	4165804
54	Key 1/4" x 1/4" x 1 3/4"	3	64164-40
55	Flange washer	1	4165793
56	Quick nipple 1/4" ISO B	2	4165847
57	Reinforcement	1	4165811.7
58	Shear bolt / N.I.L.N. (fan) pkg-10	1	4165812
59	Rubber boot	2	4165851
60	Left extension	1	4165845.7
61	Right extension	1	4165846.7
62	Hex. bolt 1/4" n.c. x 1/2"	25	O/L
63	Hex. bolt 1/4" n.c. x 3/4"	2	O/L
64	Hex. bolt 1/4" n.c. x 1 1/4"	2	O/L
65	Hex. bolt 1/4" n.c. x 2 1/2"	1	O/L
66	Hex. bolt 5/16" n.c. x 3/4"	2	O/L

PARTS LIST SB454 SNOWBLOWER

Ref. Réf.	English description	Qty. Qté.	Part # Pièce #
67	Hex. bolt 5/16" n.c. x 1 1/4"	1	O/L
68	Hex. bolt 5/16" n.c. x 2 1/4" GR8	1	O/L
69	Hex. bolt 3/8" n.c. x 3/4"	4	O/L
70	Hex. bolt 3/8" n.c. x 1 1/4"	1	O/L
71	Hex. bolt 3/8" n.c. x 1 3/4"	1	O/L
72	Hex. bolt 3/8" n.c. x 2 3/4"	1	O/L
73	Hex. bolt 7/16" n.c. x 1 1/4"	6	O/L
74	Hex. bolt 1/2" n.c. x 1"	2	O/L
75	Hex. bolt M6 x 1.00 x 16	3	O/L
76	Carriage bolt 1/4" n.c. x 5/8"	8	O/L
77	Carriage bolt 1/4" n.c. x 3/4"	2	O/L
78	Carriage bolt 5/16" n.c. x 3/4"	16	O/L
79	Carriage bolt 5/16" n.c. x 1"	6	O/L
80	Carriage bolt 3/8" n.c. x 2 3/4"	1	O/L
81	Nylon insert lock nut 1/4" n.c. (thin)	6	O/L
82	Nylon insert lock nut 1/4" n.c.	7	O/L
83	Nylon insert lock nut 5/16" n.c.	17	O/L
84	Nylon insert lock nut 3/8" n.c.	8	O/L
85	Nylon insert lock nut 7/16" n.c.	6	O/L
86	Nylon Insert lock Nut 1/2" n.c.	2	O/L
87	Flange nut 1/4" n.c.	12	O/L
88	Flange nut 5/16" n.c.	1	O/L
89	Stover lock nut 5/16" n.c.	6	O/L
90	Flat washer 5/16" hole	6	O/L
91	Flat washer 7/16" hole	5	O/L
92	Flat washer 1/2" hole	2	O/L
93	Hex. socket set screw 5/16" n.c. x 5/16"	6	O/L
94	Decal danger auger	1	105126
95	Danger decal chute	1	105127
96	Decal danger belts	1	105128
97	Decal read instructions	1	105130
98	Decal warning safety	1	105131

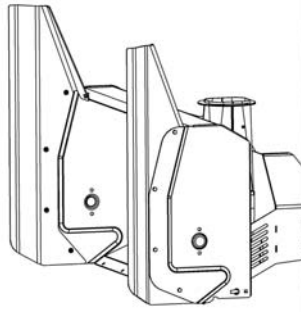
O/L = Obtain Locally

OPTIONS & ATTACHMENTS



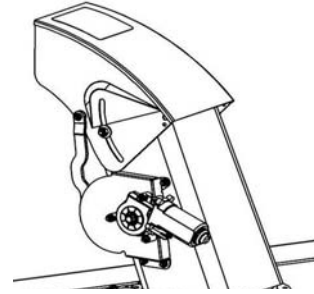
SNOW DRIFT CUTTER

#970400 for Northeast snowblower.
Facilitates and increases snow
intake.
Pkg. of 2



#970403

Pair of extended wings with snow
drift cutters.
Pkg. of 2



ELECTRIC DEFLECTOR KIT #970401

Allows to adjust the deflector
electrically from driver's seat.