

# ***LITTLE WONDER***<sup>®</sup> **OPTIMAX**

**Maximum Output Blower**

**MODELS: 9270-02-59**  
GX270 HONDA

**9270-03-59**  
EX27 SUBARU

**9390-02-59**  
GX390 HONDA

**9400-03-59**  
EX40 SUBARU

**9170-03-59**  
EX17 SUBARU



**Parts Manual and Set-up Instructions for  
OPTIMAX BLOWER**

**PARTS / SET-UP MANUAL**

**MAN 4167371**

Rev. B 05-2012

Original Language Instructions

**CALIFORNIA**

**Proposition 65 Warning**

Diesel engine exhaust and some of its constituents are known to the State of California to cause cancer, birth defects and other reproductive harm.

**⚠ WARNING**

The engine exhaust from this product contains chemicals known to the State of California to cause cancer, birth defects or other reproductive harm.

**CALIFORNIA**

**Proposition 65 Warning**

Battery posts, terminals, wiring insulation, and related accessories contain lead and lead compounds, chemicals known to the State of California to cause cancer and birth defects or other reproductive harm.

**WASH HANDS AFTER HANDLING.**

# LITTLE WONDER BLOWER

## IMPORTANT MESSAGE

On behalf of everyone at Little Wonder, we would like to thank you for your purchase of a Little Wonder Gasoline Powered Optimax Blower. This professional blower was designed to the highest standards to ensure you many hours of uninterrupted service.

This manual provides the information necessary for safe and efficient operation and service. For your safety, it is critically important that you read and understand this entire manual before operating your blower.

**LITTLE WONDER**  
**SCHILLER GROUNDS CARE, INC.**  
**1028 STREET ROAD, P.O. BOX 38**  
**SOUTHAMPTON, PA 18966**

TABLE OF CONTENTS .....	FIGURES .....	PAGE
SAFETY.....		4-6
SET UP INSTRUCTIONS.....		7-8
CONTROLS.....		9
OPERATION / MAINTENANCE .....		10
ADJUSTMENTS.....		1
STORAGE / TORQUE SPECIFICATIONS .....		12
PARTS SECTION.....		13
INTAKE GUARD ASSY MODEL 9170.....	FIGURE 1.....	14
INTAKE GUARD ASSY MODELS 9270, 9390, & 9400.....	FIGURE 2.....	15
ENGINE / HANDLE ASSY MODELS 9170.....	FIGURE 3.....	16
ENGINE / HANDLE ASSY MODELS 9270, 9390, & 9400 .....	FIGURE 4.....	17
HOUSING ASSY MODEL 9170.....	FIGURE 5.....	18
HOUSING ASSY MODELS 9270, 9390, & 9400.....	FIGURE 6.....	19
SUBARU MUFFLER GUARDS .....	FIGURE 7.....	20
HONDA MUFFLER GUARDS .....	FIGURE 8.....	21
WARRANTY .....		BACK COVER

See Manual 4167370 for Operators Manual

## MANY USES:

The extreme versatility offered by Little Wonder's line of blowers makes them ideally suited for a wide variety of jobs; blowing leaves, grass clippings, thatch, blowing tennis courts dry, cleaning large driveways, stadiums, parking lots and other hard surfaces, precleaning roofs before repair and countless other jobs.



This Manual is part of the machine. Suppliers of both new and second-hand machines must make sure that this manual is provided with the machine.

**NOTICE !!!**

Unauthorized modifications may present **extreme** safety hazards to operators and bystanders and could also result in product damage.

Schiller Grounds Care, Inc. strongly warns against, rejects and disclaims any modifications, add-on accessories or product alterations that are not designed, developed, tested and approved by Schiller Grounds Care, Inc. Engineering Department. Any Schiller Grounds Care, Inc. product that is altered, modified or changed in any manner not specifically authorized after original manufacture-including the addition of "after-market" accessories or component parts not specifically approved by Schiller Grounds Care, Inc.-will result in the Schiller Grounds Care, Inc. Warranty being voided.

Any and all liability for personal injury and/or property damage caused by any unauthorized modifications, add-on accessories or products not approved by Schiller Grounds Care, Inc. will be considered the responsibility of the individual(s) or company designing and/or making such changes. Schiller Grounds Care, Inc. will vigorously pursue full indemnification and costs from any party responsible for such unauthorized post-manufacture modifications and/or accessories should personal injury and/or property damage result.



This symbol means:  
**ATTENTION!**  
**BECOME ALERT!**

Your safety and the safety of others is involved.

**Signal word definitions:**

The signal words below are used to identify levels of hazard seriousness. These words appear in this manual and on the safety labels attached to Schiller Grounds Care, Inc. machines. For your safety and the safety of others, read and follow the information given with these signal words and/or the symbol shown above.

**⚠ DANGER**

**DANGER** indicates an imminently hazardous situation which, if not avoided, **WILL** result in death or serious injury.

**⚠ WARNING**

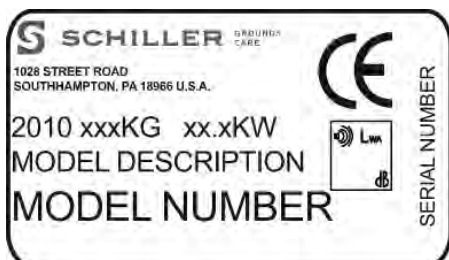
**WARNING** indicates a potentially hazardous situation which, if not avoided, **COULD** result in death or serious injury.

**⚠ CAUTION**

**CAUTION** indicates a potentially hazardous situation which, if not avoided, **MAY** result in minor or moderate injury. It may also be used to alert against unsafe practices or property damage.

**CAUTION**

**CAUTION** used without the safety alert symbol indicates a potentially hazardous situation which, if not avoided, **MAY** result in property damage.



**MODEL NUMBER:** This number appears on sales literature, technical manuals and price lists.

**SERIAL NUMBER:** This number appears only on your unit. It contains the model number followed consecutively by the serial number. Use this number when ordering parts or seeking warranty information.

### MAINTENANCE SAFETY

#### In general

- Maintain machine according to manufacturer's schedule and instructions for maximum safety and best results.
- Park machine on level ground.
- Never allow untrained personnel to service machine.
- Guards should only be removed by a qualified technician for maintenance or service.
- Adjust or repair only after the engine has been stopped and the fan has stopped moving.
- Disconnect spark plug wire(s) before doing any maintenance.
- Replace parts if worn, damaged or faulty. For best results, always replace with parts recommended by the manufacturer.
- Do not dismantle the machine without releasing or restraining forces which may cause parts to move suddenly.
- Provide adequate support, e.g. jack stands for lifted machine or parts if working beneath.
- Do not put hands or feet near or under rotating parts.
- Clean up spilled oil or fuel thoroughly.
- Replace faulty mufflers.
- To reduce fire hazards, keep the engine, muffler, and fuel storage area free of grass, leaves, debris buildup or grease.

#### Fans

Do not straighten or weld fans. Replace damaged or failed fans..

#### Fuel

- Gasoline (petrol) and diesel fuels are flammable; gasoline (petrol) vapors are explosive. Use extra care when handling.
- Store only in containers specifically designed for fuel.



- When refueling or checking fuel level:
  - Stop the engine and allow to cool;
  - Do not smoke;
  - Refuel outdoors only;
  - Use a funnel;
  - Do not overfill;
  - If fuel is spilled, do not attempt to start the engine until the spill is cleaned up and vapors have cleared.
- Replace caps on fuel containers and tanks securely.

Sparks from static electricity can start fires or cause explosions. Flowing fuel can generate static electricity. To prevent static electricity sparks:

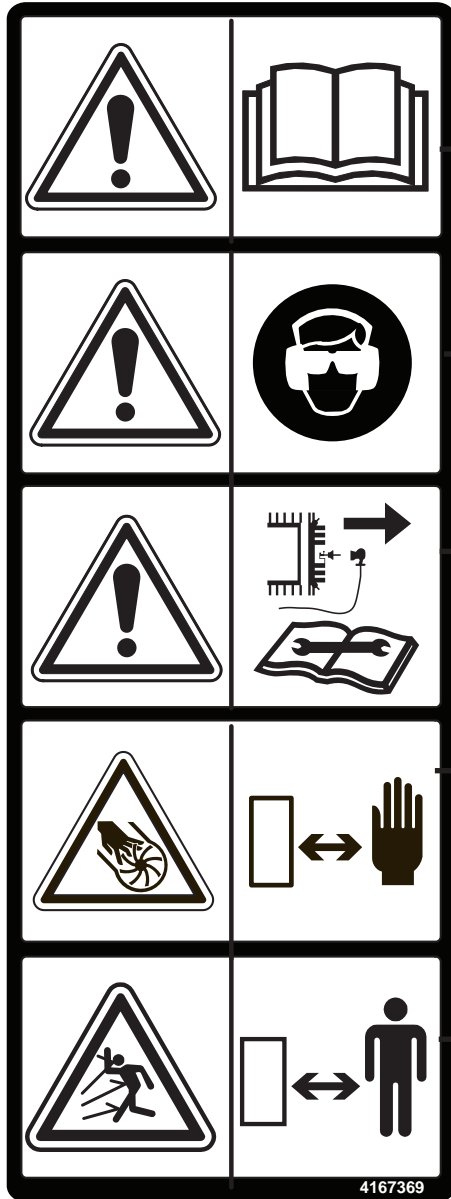
- Keep containers electrically grounded. Do not fill containers in a vehicle or on a truck or trailer bed with a plastic liner. Fill containers on the ground away from the vehicle.
- When practical, remove petrol (gasoline) powered equipment from the truck or trailer and refuel it on the ground. If equipment must be refueled on the truck or trailer, refuel from a portable container rather than a dispenser nozzle.
- Keep the dispenser nozzle in contact with the rim of the fuel tank or container opening until fueling is complete. Do not use a nozzle lock-open device.
- If fuel is spilled on clothing change it immediately.

### STORAGE SAFETY

- Stop the engine and allow to cool before storing.
- Drain the fuel tank outdoors only.
- Store fuel in an approved container in a cool, dry place.
- Keep the machine and fuel containers in a locked storage place to prevent tampering and to keep children from playing with them.
- Do not store the machine or fuel container near an open flame, spark, or appliance, such as a water heater, or a pilot light.
- Keep petrol (gasoline) storage area free of grass, leaves and excessive grease to reduce fire hazard.
- Clean grass and debris from cutting units, drives, mufflers and engine to help prevent fires.

## SAFETY DECALS

An important part of the safety system incorporated in this blower are the warning labels found on the blower. Replace labels if damaged or illegible.



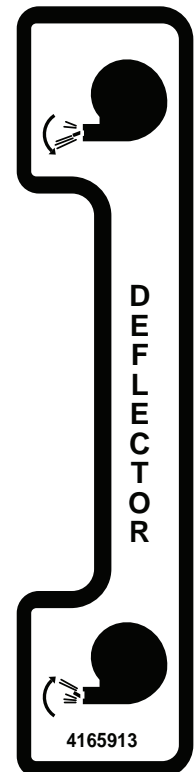
Read and understand the operator manual. Pay particular attention to all sections regarding safety. Store your owners manual in a safe place.

Wear eye and ear protection.

Before performing any service or maintenance, disconnect spark plug wire. Make sure engine switch is in the OFF (O) position.

Caution:  
Contact with rotating fan will cause serious injury. Keep hands away from air intake and discharge areas.

Caution:  
Thrown objects.  
Keep bystanders away. Do not blow towards people or items that may be injured or damaged by flying debris.  
Keep bystanders away.



4165913 USED ON REMOTE  
HORIZONTAL DEFLECTOR MODELS  
ONLY

### SET-UP INSTRUCTIONS

1. Open box. Remove upper handle and cardboard insert.
2. Lay box down with blower housing up. Use lower handle to roll unit out of the box.
3. Locate hardware package.
4. Install upper handle to lower handle with (4) 3/8-16 x 1-34 carriage bolts and (4) 3/8-16 flanged nylon insert nuts from the hardware package. Tighten the nuts securely but not so much as to crush the tube. (Figure 1)
5. Route the throttle cable in front of lower handle crossbar. Install to the left side of the upper handle with (2) 10-32 x 1/2 thread forming screws from the hardware package. (Figure 2)

### MODEL 9170 GO TO STEP 10.

6. **MODELS 9270, 9390, & 9400 ONLY:** Ensure the center link of the chain is on the center tooth of the deflector sprocket before connecting the deflector cable. (Figure 3)



FIGURE 1

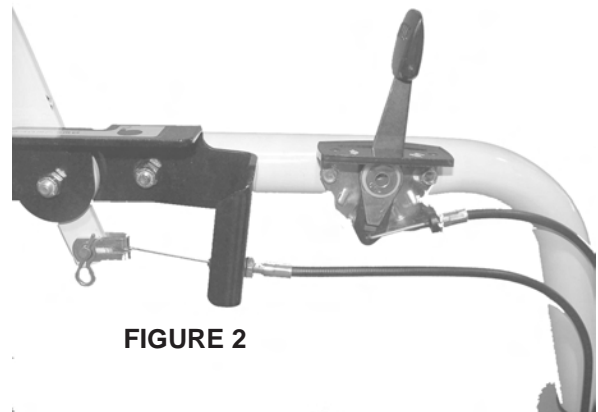


FIGURE 2

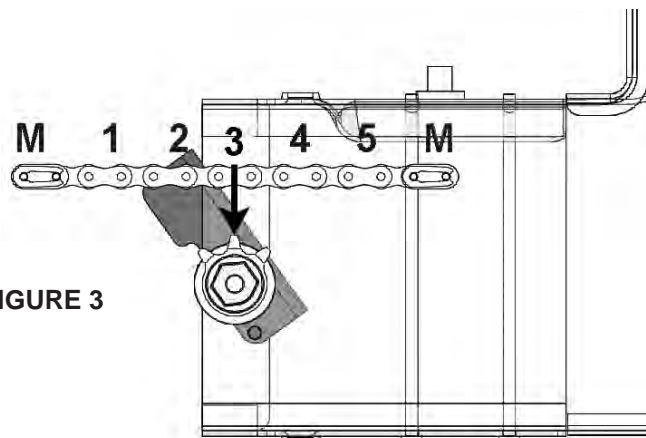


FIGURE 3



## SET-UP INSTRUCTIONS (continued)

7. Route the deflector cable above the axle and in front of the lower handle cross bar. Remove one of the nuts and the boot from the end of the deflector cable and install the cable through the key slot into the bracket on the upper handle. Reconnect the clevis from the control lever and install over the end of the cable. Reconnect the clevis to the control lever with a  $\frac{1}{4}$  x  $\frac{5}{8}$  clevis pin and hairpin cotter. (Note: The deflector can be moved and held in place with the locking knob to help connect the clevis fitting to the control lever. Move the control lever to the rear to more easily connect the cable. Loosen the knob so the deflector moves freely after the clevis is connected. (Figure 4)
8. Move the deflector control lever to the rear of the slot. Adjust the jam nuts on the cable fitting so the deflector is completely closed. Lock the nuts against the bracket when the adjustment is correct.
9. Secure the throttle and deflector cables to the handle tubes with cable ties from the hardware package. Trim off excess. (Figure 5)
10. Fill the engine with oil to the level indicated on the dipstick. Fill the fuel tank with clean, fresh regular grade unleaded gasoline.

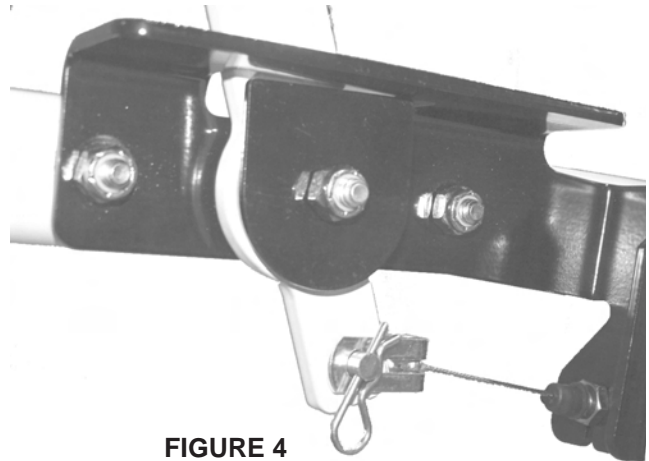


FIGURE 4



FIGURE 5



# LITTLE WONDER BLOWER

## CONTROLS

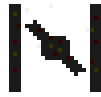
(BLOWER SHOWN WITH SUBARU EX40 ENGINE.  
OTHER ENGINES ARE SIMILAR.)

### SWITCH (A)

Move to the "OFF" position to stop the engine.  
Move to the "ON" position before starting engine.

### THROTTLE (B)

Controls engine speed and the amount of air  
being blown.



### CHOKE (C)

Move to the "CHOKE" position to apply the  
choke. Move to the "RUN" position to remove  
the choke.

### FUEL SHUT OFF (D)

Move to the "OFF" position to shut off the fuel  
whenever transporting the machine by trailer  
or truck or during storage. Move to the "ON"  
position before starting the engine.

### REMOTE HORIZONTAL DEFLECTOR LEVER (E) Models 9270, 9390, and 9400 Only

Move the lever forward to direct the flow of air  
down. Move the lever back to direct the flow of  
air up.

### LOCKING KNOB (F)

Tighten the knob to lock the horizontal deflector  
in the desired position.

**Models 9270, 9390, and 9400:** Loosen to allow  
the deflector to be rotated with remote horizontal  
deflector lever.

### VERTICAL DEFLECTOR (G)

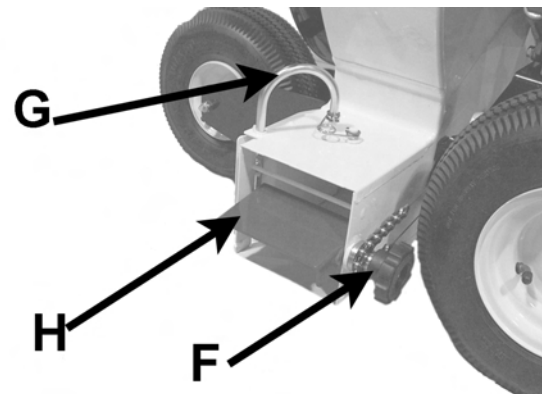
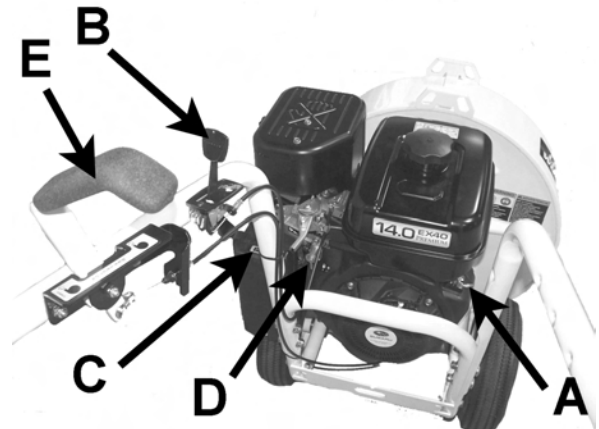
Rotate the deflector to direct air discharge  
forward or to the side.

### HORIZONTAL DEFLECTOR (H)

Directs air flow.

**Model 9170:** Loosen knob **F** and adjust **H** to  
desired air flow direction.

**Models 9270, 9390, and 9400:** Controlled by  
Remote Horizontal Deflector Lever **E**. May be  
locked in place with knob **F**.



## BEFORE STARTING THE ENGINE

1. Read the Operator Manual and Engine Manual. Become familiar with the controls, how each functions, and what it operates.
2. Check the engine oil level and add if necessary.
3. Fill the fuel tank with good quality, clean, unleaded regular gasoline (petrol). Use a funnel to avoid spilling.

## OPERATING INSTRUCTIONS

Air flow can be directed to the side or front by the two-position vertical deflector. The front discharge position is used to remove debris from along walls, fences, etc. The side discharge position is used to form windrows or piles. The horizontal deflector directs air downward to “chisel” under wet, heavy leaves and litter. Air velocity is regulated by the throttle setting.

To reduce windrowing or to blow over an obstacle, point deflector upward.

To avoid blowing in an area, close deflector and reduce throttle setting.

Slight changes in deflector position will have a big effect on air flow. Experiment until you find the best position for your needs.

When clearing a yard or parking lot, a little time spent planning how to blow it off can greatly reduce the total clearing time.

To stop the engine, move the throttle control to the slow position and switch the engine off.

Stop the engine when moving from work site to work site. This will save fuel and prevent inadvertently blowing debris where you don't want to.

**NOTE:** When transporting the machine by truck or trailer, close the fuel valve. This avoids the possibility of flooding should any dirt get under the carburetor float needle. Leaving the valve open can allow severe flooding which may ruin the engine by diluting the oil.

## MAINTENANCE INSTRUCTIONS

Stop engine and remove the spark plug wire before performing any maintenance.

Keep blower air intake clear of debris for best performance.

Clear air discharge area of any debris accumulation. Ensure machine has been shut off and fan is no longer moving before clearing.

Keep all hardware tight.

Check oil level daily. Top off as needed.

Change engine oil after the first 5 hours of operation. Then change as recommended by the engine manufacturer.

1. Remove drain plug and drain oil while engine is warm.
2. Replace drain plug, remove fill plug and fill with new oil. See engine manual for oil specifications.
3. Start and run engine for 30 seconds. Stop engine.
4. Wait 30 seconds, then re-check oil level.
5. Top off if necessary. See engine manual for details.

### FOR MODELS EQUIPPED WITH THE REMOTE HORIZONTAL DEFLECTOR

#### DEFLECTOR LEVER

If the deflector door moves from the set position during operation, tighten the deflector lever pivot bolt just enough to keep the deflector in place. **DO NOT over tighten, the handle tube could crush.**

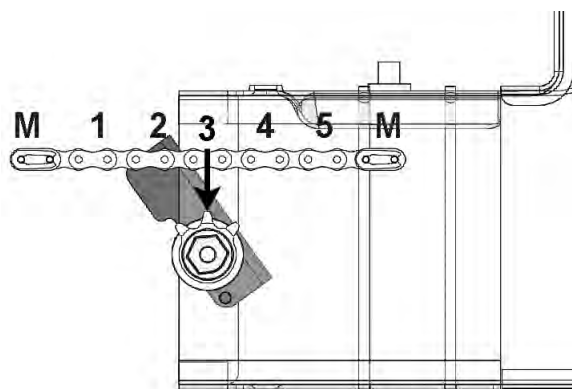
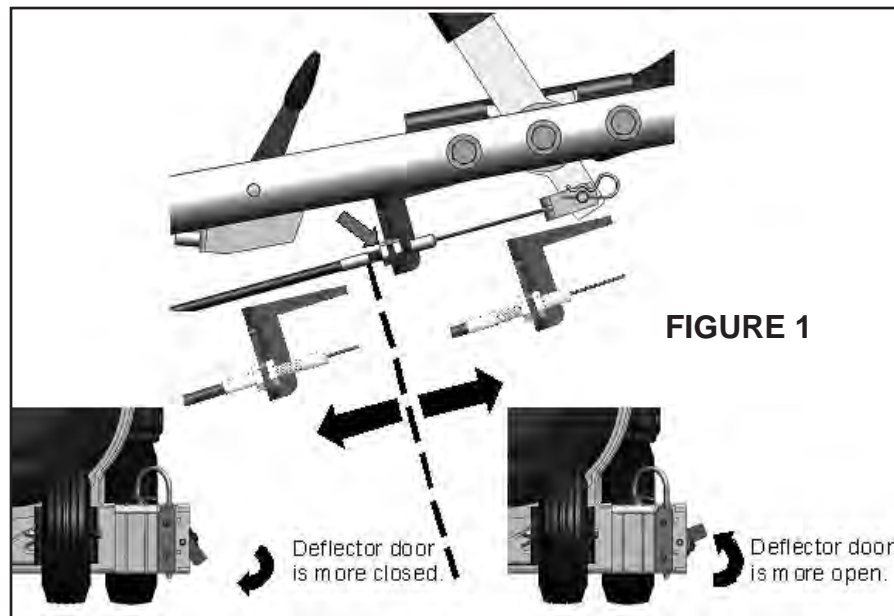
#### HORIZONTAL DEFLECTOR

Adjust the jam nuts on the cable conduit so the deflector door is completely closed when the deflector lever is moved all the way forward. (Figure 1)

#### DEFLECTOR CHAIN

The sprocket needs to be installed on the deflector as shown. The chain consists of 2 master links, 6 roller links, and 5 pin links. The middle pin link should be over the center tooth of the sprocket. (Figure 2)

If large amounts of adjustment are required, the chain can be moved one pitch on the sprocket to gain 1/2" of adjustment.



## STORAGE / TORQUE SPECIFICATIONS

## LITTLE WONDER BLOWER

### STORAGE

To prevent possible explosion or ignition of vaporized fuel, do not store equipment with fuel in tank or carburetor in an enclosure with open flame (for example, a furnace or water heater pilot).

**Before the equipment is put into storage for any period exceeding 30 days.**

1. Drain all fuel from the fuel tank and fuel lines.
2. Start the engine and run until all the fuel is used from the carburetor float bowl and the engine stops.
3. While the engine is still warm, drain the crankcase oil and replace with the proper weight oil corresponding to the season the equipment will be next used.
4. Remove the spark plug and squirt a small amount of engine oil into the cylinder. Slowly pull the starter a few times to distribute oil in the cylinder and reinstall the spark plug.
5. Top off if necessary. See engine manual for details.

**To put the equipment into service after an extended period of storage.**

1. Check for loose parts and tighten if necessary.
2. Fill the fuel tank and then check the engine oil level.
3. Start the engine and check for fuel leaks. Repair any leaks before operating the unit.

### TORQUE SPECIFICATIONS

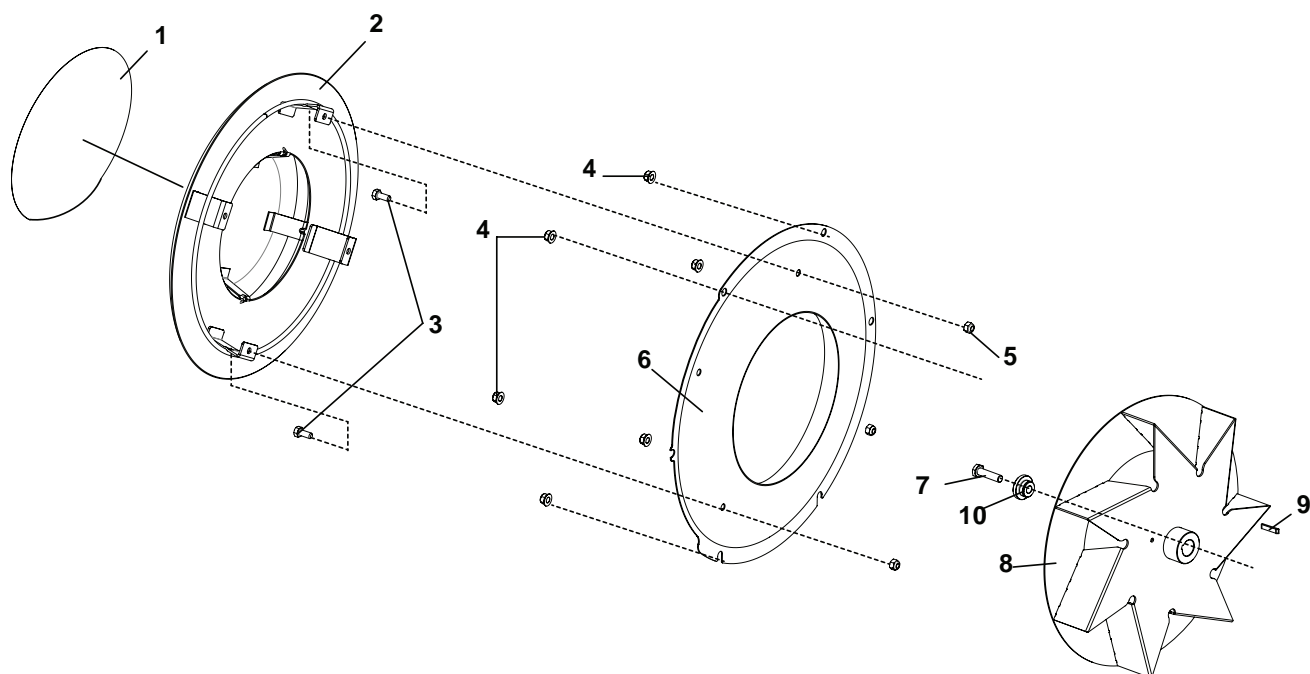
Location	Description	P/N	Min. Torque Ft-lbs (In-lbs)	Max. Torque Ft-lbs (In-lbs)
Housing to engine face	BLT-W LF 5/16-24 x 1-3/8	910517	22	28
Engine to deck	BLT 5/16-18 X 1-1/2	64262-009	19	25
Fan to Crankshaft	BLT-HEX 7/16-20 x 1-3/4 GR8 (USED ON 9270 MODELS)	64123-253	50	90
	BLT-HEX 3/8-24X1-3/4 GR8 (USED ON 9390 AND 9400 MODELS)	64123-127	30	50
	BLT-HEX 3/8-24 X 2.5 GR 8 (USED ON 9170 MODELS)	64123-254	19	25

# **PARTS SECTION**

# 9170 INTAKE GUARD ASSY

# LITTLE WONDER BLOWER

FIGURE 1

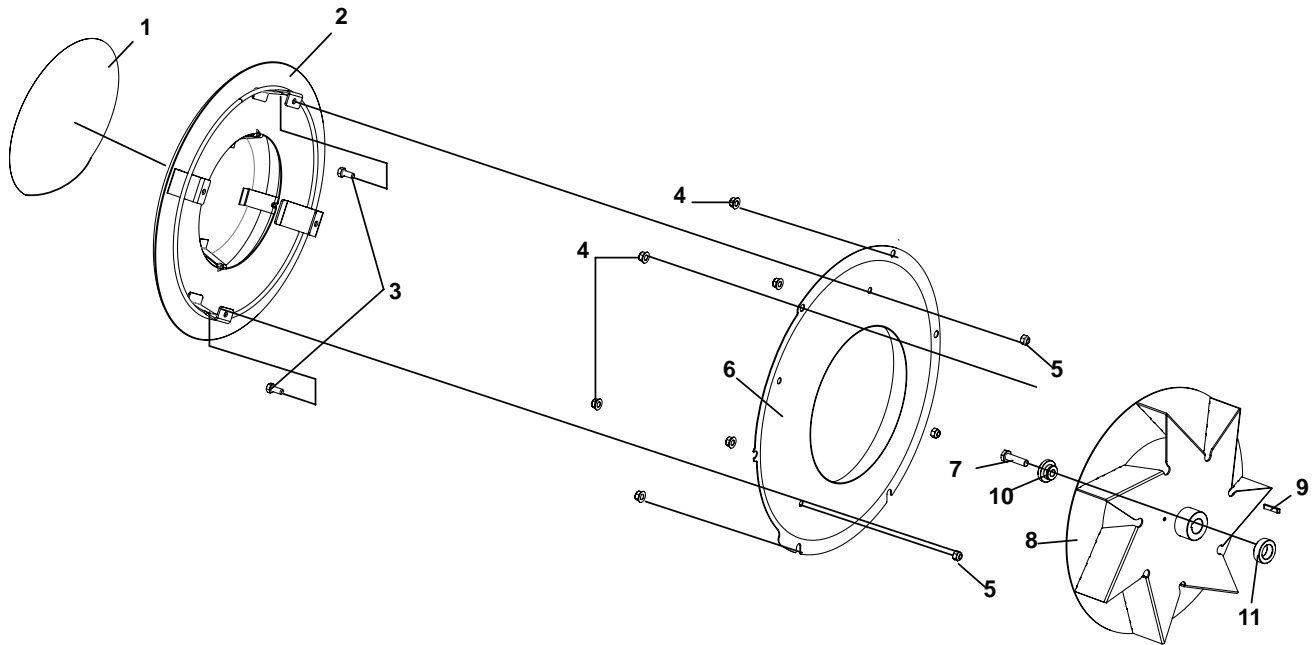


ITEM	PART NO.	DESCRIPTION	QTY
1	4166183	LABEL-INTAKE GUARD	1
2	4165218.7	ASSY-INTAKE GUARD	1
3	64123-54	BLT-HEX 5/16-18 X .75	4
4	64268-02	NUT-FL NYLON LOCK 5/16-18	6
5	64229-02	NUT 5/16-18	4
6	4165926.10	INTAKE PANEL-CENTER	1
7	64123-254	BLT-HEX 5/16-24 x 1-3/4 GR8	1
8	4166729	WLDMT-FAN, 7BL 1.50	1
9	64164-13	KEY 1/4 X 2 SQ	1
10	4165139	PLUG-FAN HUB 5/16 X 3/4	1

# LITTLE WONDER BLOWER

## 9270, 9390, & 9400 INTAKE GUARD ASSY

FIGURE 2



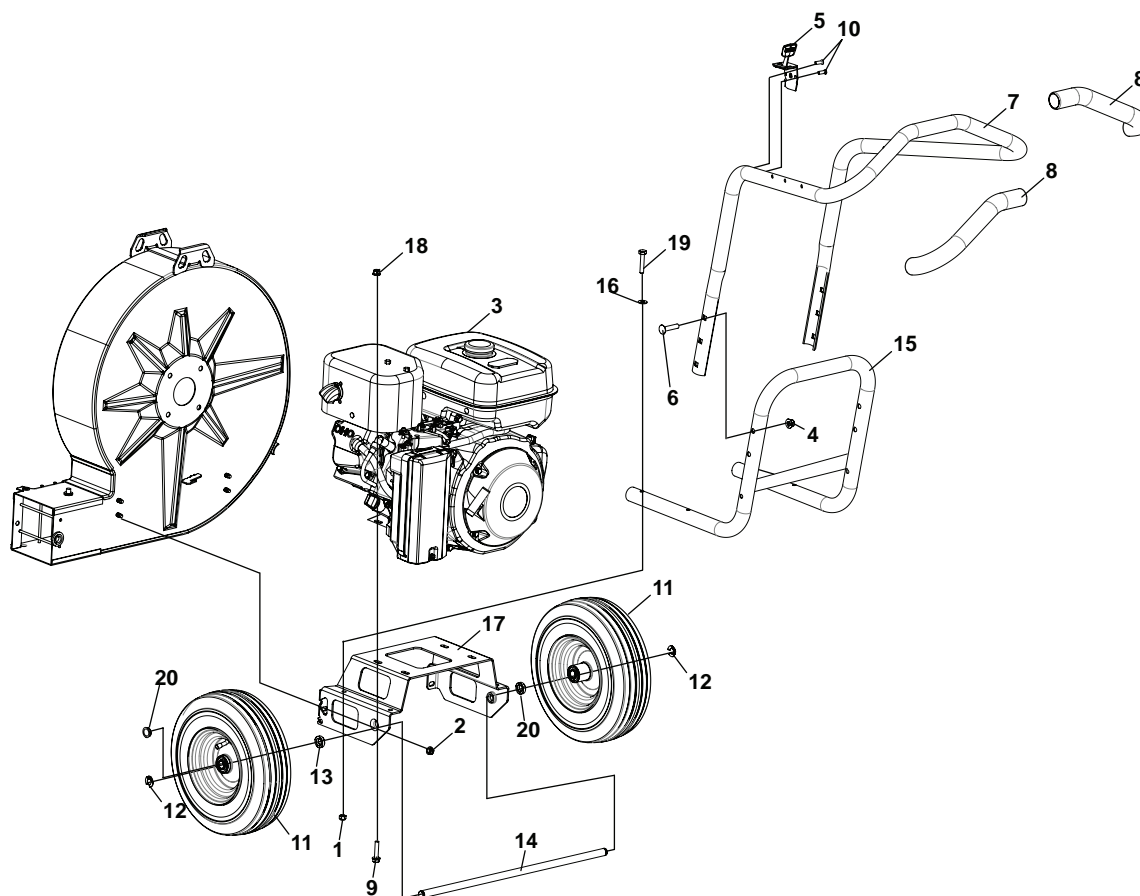
ITEM	PART NO.	DESCRIPTION	QTY	ITEM	PART NO.	DESCRIPTION	QTY
1	4166183	LABEL-INTAKE GUARD	1				
2	4165218.7	ASSY-GUARD INTAKE	1				
3	64123-54	BLT-HEX 5/16-18X.75	4				
4	64268-02	NUT-FL NYLON LOCK 5/16-18	6				
5	64229-02	NUT 5/16-18	4				
6	4165926.10	INTAKE PANEL-CENTER	1				
7	64123-253	BLT-HEX 7/16-20 x 1-3/4 GR8 (USED ON 9270 MODELS)	1				
	64123-127	BLT-HEX 3/8-24X1-3/4 GR8 (USED ON 9390 AND 9400 MODELS)					
8	4166730	WLDMT-FAN 7 BLADE 2.75 (USED ON 9270 MODELS)	1				
	4166731	WLDMT-FAN 9 BL (USED ON 9390 AND 9400 MODELS)					
9	64164-13	KEY 1/4 X 2 SQ	1				
10	4163427	PLUG-FAN 7/16 X 1 (USED ON 9270 MODELS)	1				
	4163424	PLUG-FAN 3/8 X 1.0 (USED ON 9390 AND 9400 MODELS)					
11	4165169	SPACER-FAN .53	1				



# 9170 ENGINE / HANDLE ASSY

# LITTLE WONDER BLOWER

FIGURE 3

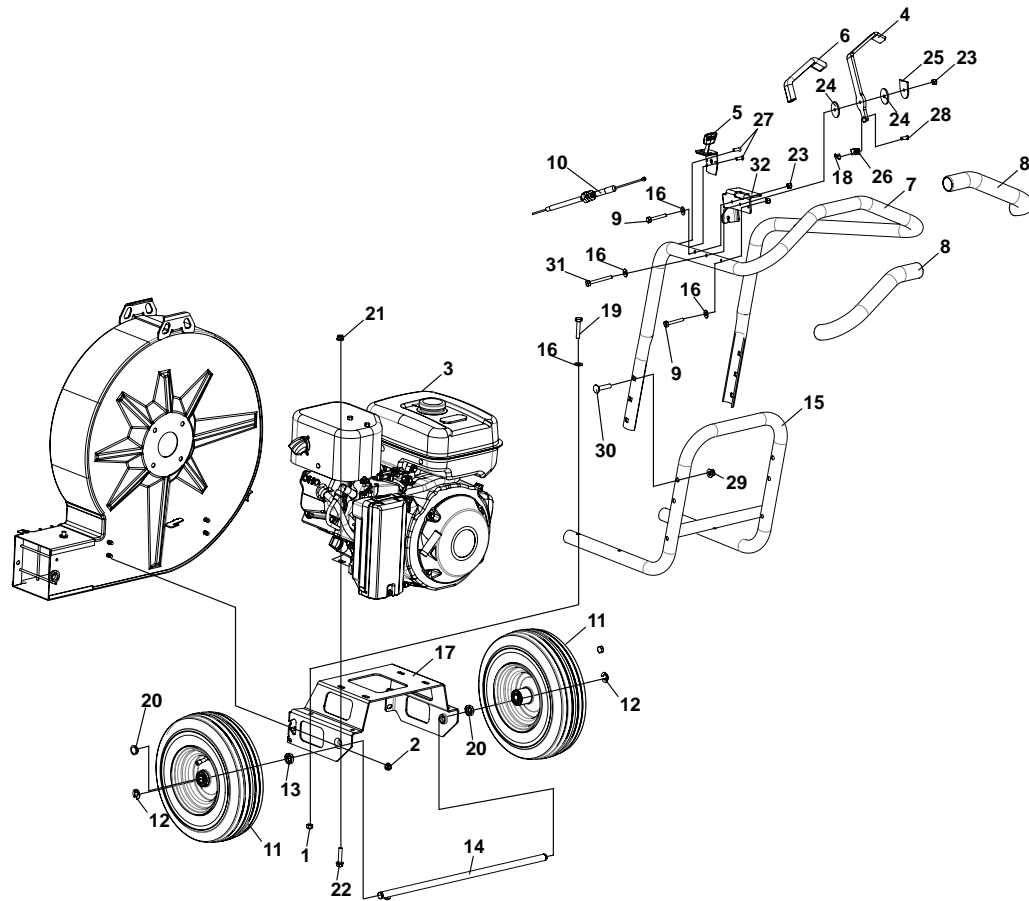


ITEM	PART NO.	DESCRIPTION	QTY	ITEM	PART NO.	DESCRIPTION	QTY
1	64229-02	LOCKNUT-NYL 5/16-18	4	13	4164192-01	SPACER-PDR MTL 35X1.0X.25	2
2	64141-6	NUT 5/16-18	4	14	4164178	AXLE	1
3	4163472	ENG-6HP SUBARU	1	15	4167557.10	HANDLE-LOWER	1
4	64268-03	NUT-FL NYLON LOCK 3/8-16	4	16	64163-55	WASHER-5/16 FLAT	4
5	4166170-02	CABLE-THROTTLE	1	17	4164593.7	DECK-ENGINE, BLR, SM	1
6	64018-5	BLT-CRG 3/8-16X1-3/4	4	18	64268-02	NUT-FL NYLON LOCK 5/16-18	4
7	4166779	S-HANDLE UPPER W/ GRIPS (INCLUDES ITEM 8 QTY 2)	1	19	64123-61	BLT-HEX 5/16-18X1-3/4	4
8	4164632	GRIP-1-1/4 X 14	2	20	4164204-01	BEARING-WHL	4
9	64262-009	BLT-FLGHD 5/16-18X1-1/2	4				
10	64139-26	BLT-WLF 10-32 X 5/8	2				
11	4165974	WHEEL	2				
12	64144-36	SNAP RING.625	2				

# LITTLE WONDER BLOWER

## 9270, 9390, & 9400 ENGINE / HANDLE ASSY

FIGURE 4

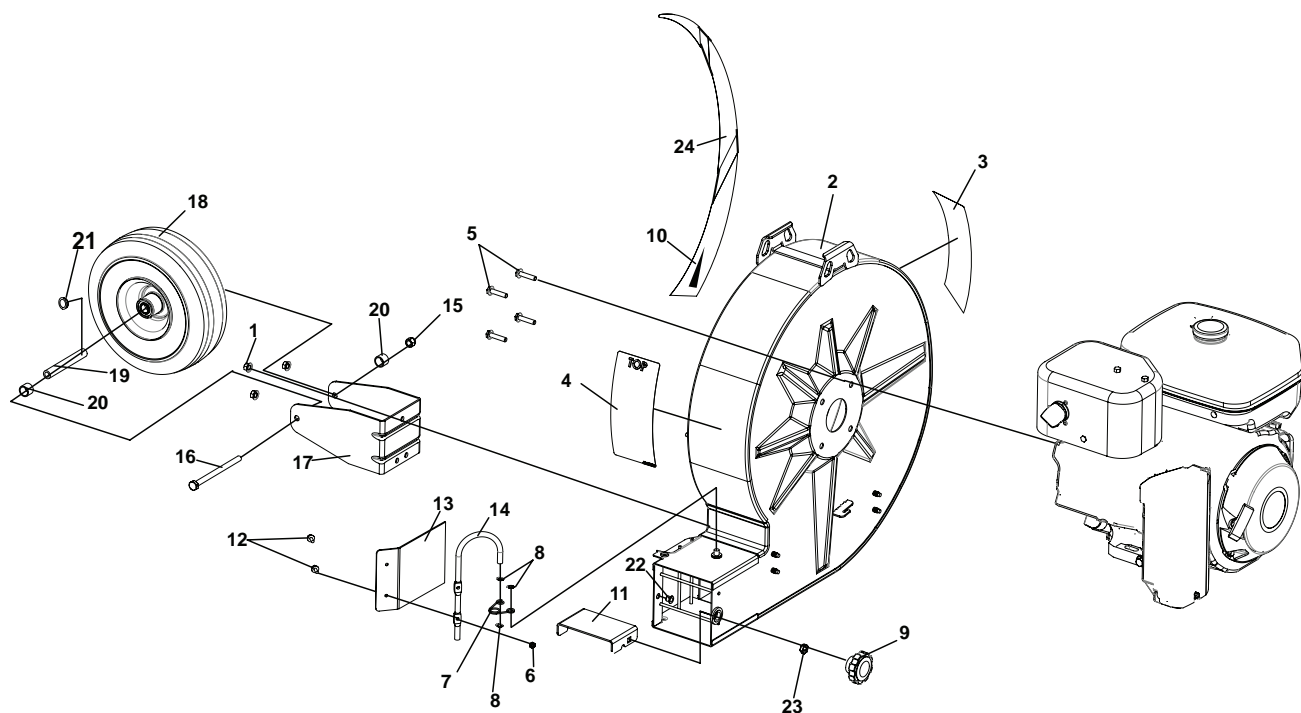


ITEM	PART NO.	DESCRIPTION	QTY	ITEM	PART NO.	DESCRIPTION	QTY
1	64229-02	LOCKNUT-NYL 5/16-18	4	13	4164192-01	SPACER-PDR MTL 35X1.0X.25	2
2	64141-6	NUT 5/16-18	4	14	4164178	AXLE	1
3	4166074	ENG-HONDA GX270	1	15	4167557.10	HANDLE-LOWER	1
		(USED ON 9270-02 MODEL)		16	64163-55	WASHER-5/16 FLAT	4
	4165990	ENG-SUBARU EX27	1	17	4164588.7	DECK-ENGINE,BLR LG	1
		(USED ON 9270-03 MODEL)		18	64168-2	COTTER-HAIRPIN .08X1.19	1
	4166075	ENG-HONDA GX390	1	19	64123-61	BLT-HEX 5/16-18X1-3/4	4
		(USED ON 9390 MODEL)		20	4164204-01	BEARING-WHL	4
	4165993	ENG-SUBARU EX40	1	21	64268-02	NUT-FL NYLON LOCK 5/16-18	4
		(USED ON 9400 MODEL)		22	64262-009	BLT-FLGHD 5/16-18X1-1/2	4
4	4166778	S-LEVER W/ GRIP	1	23	64229-01	NUT-NYLON LOCK 1/4-20	1
		(INCLUDES ITEM 6)		24	4165854	WASHER- UHMW PE	2
5	4166170-01	CABLE-THROTTLE	1	25	4165855.7	WASHER-ANTIROTATION	1
		(USED ON HONDA ENGINES)		26	4166457	CLEVIS-CABLE	1
	4166170-02	CABLE-THROTTLE	1	27	64139-26	BLT-WLF 10-32 X 5/8	2
		(USED ON SUBARU ENGINES)		28	64188-65	PIN CLEVIS 1/4X.62	1
6	4165987	GRIP-GRIP-1/4X1X5 LEVER	1	29	64268-03	NUT-FL NYLON LOCK 3/8-16	4
7	4166779	S-HANDLE UPPER W/ GRIPS	1	30	64018-5	BLT-CRG 3/8-16X1-3/4	4
		(INCLUDES ITEM 8 QTY 2)		31	64123-98	BLT-HEX 1/4-20X2-1/2	1
8	4164632	GRIP-1-1/4 X 14	2	32	4166780	S-BRACKET,DEFLECTOR	1
9	64123-283	BLT-HEX 1/4-20X1.75	2				
10	4166615	CABLE-PRE DEFLECTOR	1				
11	4164204	WHEEL-4.10/3.50 X 6	2				
12	64144-36	SNAP RING.625	2				

# 9170 HOUSING ASSEMBLY

## LITTLE WONDER BLOWER

FIGURE 5



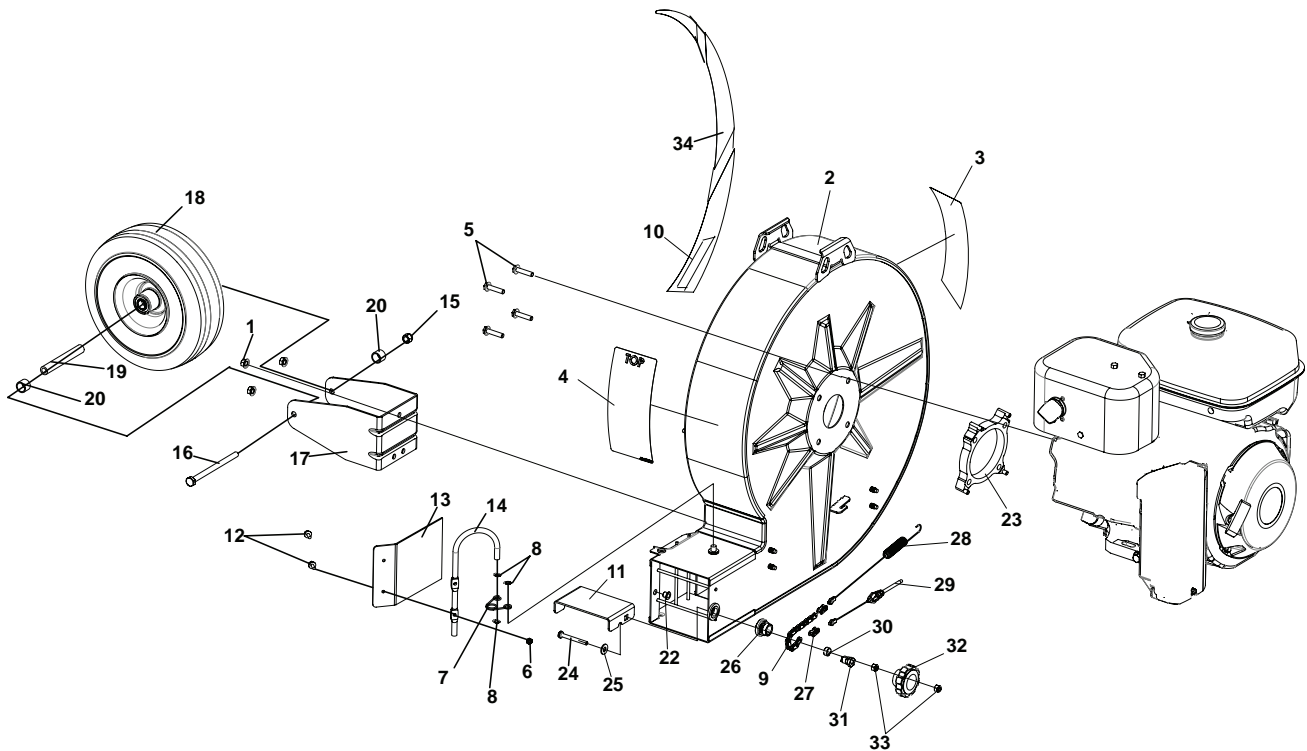
ITEM	PART NO.	DESCRIPTION	QTY	ITEM	PART NO.	DESCRIPTION	QTY
1	64141-6	NUT 5/16-18	3	16	64123-252	BLT-HEX 3/8-16 X 5-1/2	1
2	4167698	S-HOUSING SM BLOWER EU	1	17	4165178.7	BRKT-FRT WHL	1
3	4166187	LABEL-BLOWER SIDE	1	18	4164205	WHEEL-PNEUMATIC	1
4	4167369	LABEL-WARNING/DANGER	1	19	900404	SLEEVE-WHEEL	1
5	910517	BLT-WLF 5/16-24 X 1-3/8	4	20	900405	SPACER-FRT WHL BRKT	2
6	64151-31	LOCKNUT-10-32	2	21	4164204-01	BRG-PNEUMATIC WHL	2
7	910130	SPRING-DEFLECTOR	1	22	38304-06	BEARING-FL PLASTIC .31 ID	1
8	8-18	RING-RETAINING	3	23	64002-04	LOCKWASHER EXT. 5/16	1
9	910131	KNOB-SM BLOWER	1	24	4167331	LABEL-SCROLL	1
10*	4166189	LABEL-LB170 9170 MODEL	1				
11	4166009.17	DEFLECTOR-SIDE SM	1				
12	64197-008	BLT-TDFM 10-32X1/2	2				
13	910106.10	DEFLECTOR-INT, SM	1				
14	910132	HANDLE-DEFLECTOR	1				
15	64229-03	NUT-NYLON LOCK 3/8-16	1				

\*NOT ILLUSTRATED

# LITTLE WONDER BLOWER

## 9270, 9390, & 9400 HOUSING ASSEMBLY

FIGURE 6



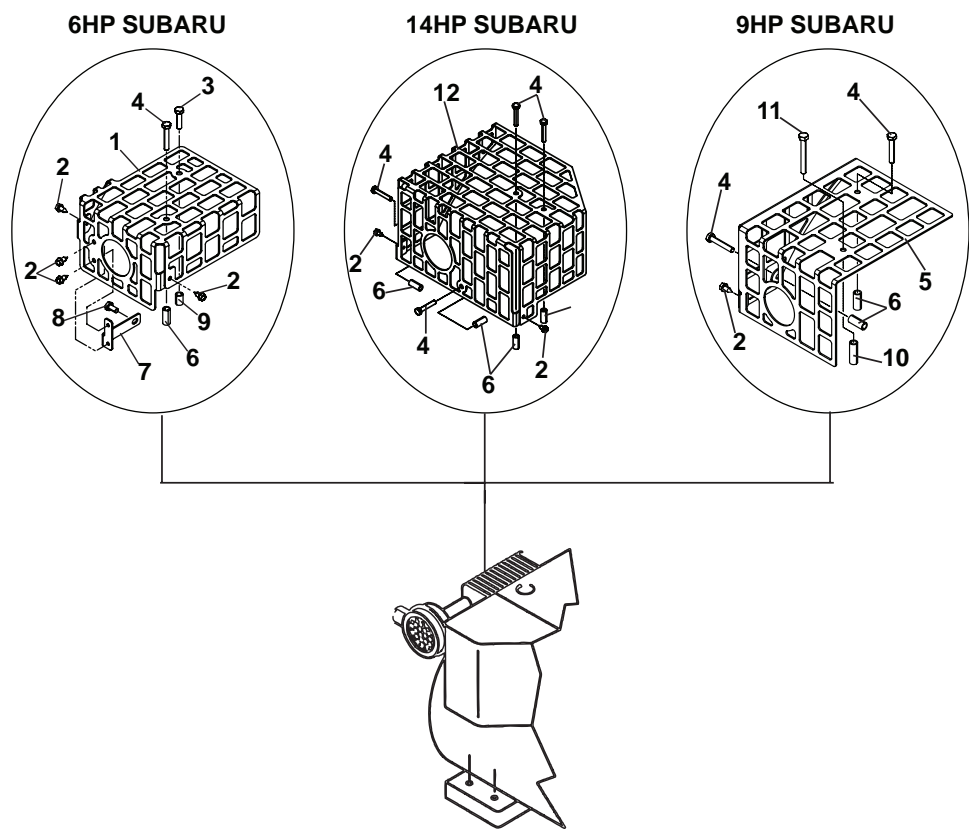
ITEM	PART NO.	DESCRIPTION	QTY	ITEM	PART NO.	DESCRIPTION	QTY
1	64141-6	NUT 5/16-18	3	19	900404	SLEEVE-WHEEL	1
2	4167699	S-HOUSING LG BLOWER EU	1	20	900405	SPACER-FRT WHL BRKT	2
3	4166187	LABEL-BLOWER SIDE	1	21	4164204-01	BEARING-WHEEL	2
4	4167369	LABEL-WARNING/DANGER	1	22	38304-06	BEARING-FL PLASTIC .31 ID	1
5	910517	BLT-WLF 5/16-24 X 1-3/8	4	23	4166181	SPACER-ENG HOUSING	1
6	64151-31	LOCKNUT-10-32	2	24	64123-288	BLT-HEX 1/4-20 X 2-1/4	1
7	910130	SPRING-DEFLECTOR	1	25	64163-55	WSHR .328X.75X14 GA	1
8	8-18	RING-RETAINING	3	26	4166175	PIVOT-DEFLECTOR, OUTER	1
9	4166618	CHAIN-DEFLECTOR	1	27	4165192	LINK-MASTER #43	2
10*	4166193	LABEL-LB400S, 9400 MODEL	1	28	4166614	CABLE-PUSH, POST DFLCTR	1
	4166190	LABEL-LB270H, 9270-02 MODEL		29	4166615	CABLE-PUSH, PRE-DFLCTR	1
	4166191	LABEL-LB270S, 9270-03 MODEL		30	4166324-02	BEARING-SLEEVE	1
	4166192	LABEL-LB390H, 9390 MODEL		31	4166176	PIVOT-DEFLECTOR, INNER	1
11	4166182.17	DEFLECTOR-SIDE	1	32	4166195	KNOB-1/4 FEMALE	1
12	64197-008	BLT-TDFM 10-32X1/2	2	33	64229-01	NUT-NYLON LOCK 1/4-20	2
13	910123.10	DEFLECTOR-INT	1	34	4167331	LABEL-SCROLL	1
14	910132	HANDLE-DEFLECTOR	1				
15	64229-03	NUT-NYLON LOCK 3/8-16	1				
16	64123-252	BLT-HEX 3/8-16 X 5-1/2	1				
17	4165178.7	BRKT-FRT WHL	1				
18	4164205	WHEEL-4.10/3.50X4	1				

\*NOT ILLUSTRATED

# SUBARU MUFFLER GUARDS

LITTLE  
WONDER  
BLOWER

FIGURE 7

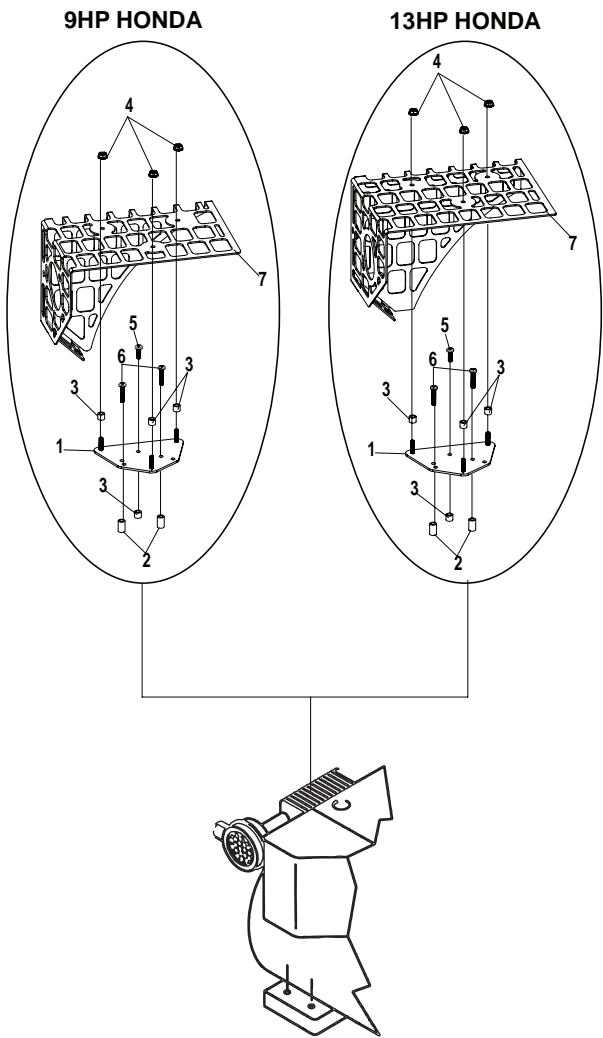


ITEM	PART NO.	DESCRIPTION	QTY	ITEM	PART NO.	DESCRIPTION	QTY
1	4165251.7	GUARD-MUFFLER SUB 6HP (USED ON 6HP SUBARU ONLY)	1	7	4165175.7	BRKT-MUFFLER GUARD (USED ON 6HP SUBARU ONLY)	1
2	64152-56	SCREW-HS S-TAP #12X1/2		8	64205-013	BLT-M6-1X12 (USED ON 6HP SUBARU ONLY)	1
	6HP SUBARU	QTY 4		9	4165310	SPACER (USED ON 6HP SUBARU ONLY)	1
	14HP SUBARU	QTY 2		10	4165309	SPACER (USED ON 9HP SUBARU ONLY)	1
	9HP SUBARU	QTY 1		11	64205-023	BLT-M6-1X50 (USED ON 9HP SUBARU ONLY)	1
3	64205-025	BLT-M6-1X25 (USED ON 6HP SUBARU ONLY)	1	12	4165034.7	GUARD-MUFFLER SUB 14HP (USED ON 14HP SUBARU ONLY)	1
4	64205-014	BLT-M6-1X35					
	6HP SUBARU	QTY 1					
	14HP SUBARU	QTY 4					
	9HP SUBARU	QTY 2					
5	4165027.7	GUARD-MUFFLER SUBARU 9HP (USED ON 9HP SUBARU ONLY)	1				
6	820529	SPACER					
	6HP SUBARU	QTY 1					
	14HP SUBARU	QTY 4					
	9HP SUBARU	QTY 2					

**LITTLE  
WONDER  
BLOWER**

**SUBARU MUFFLER GUARDS**

**FIGURE 8**



ITEM	PART NO.	DESCRIPTION	QTY	ITEM	PART NO.	DESCRIPTION	QTY
1	910156	MUFFLER PLATE HONDA	1				
2	910158	STANDOFF 5/8	2				
3	910159	STANDOFF 5/16	4				
4	910531	NUT WIZ FLANGE 10-24					
5	910532	SCREW SELF TAPPING M5 X 16	1				
6	910533	SCREW SELF TAPPING M5 X 25	2				
7	910154	MUFFLER GUARD-9HP HONDA (9HP HONDA ONLY)	1				
	910155	MUFFLER GUARD-13HP HONDA (13HP HONDA ONLY)					



## **5 YEAR LIMITED SERVICE AND WARRANTY POLICY FOR LITTLE WONDER BLOWERS**

All Little Wonder Blowers are warranted against defects in material and workmanship for a period of five (5) years from the date of purchase, under the following terms and conditions.

LITTLE WONDER will repair or replace, at its option, any part or parts of the product found to be defective in material or workmanship during the warranty period. Warranty repairs and replacements will be made without charge for parts or labor. All parts replaced under warranty will be considered as part of the original product, and any warranty on the replaced parts will expire coincident with the original product warranty. If you think your LITTLE WONDER BLOWER is defective in material or workmanship, you must return it to a registered dealer with a valid sales receipt or to our factory at 1028 Street Rd., Southampton, PA 18966. Transportation charges to ship your product to us or a registered dealer must be borne by you.

Engines for all gasoline powered products are warranted separately by the engine manufacturer. Therefore, there are no warranties made, expressed or implied, for engines for gasoline powered products by LITTLE WONDER.

LITTLE WONDER assumes no responsibility in the event that the product was not assembled or used in compliance with any assembly, care, safety or operating instructions contained in the Owner's Manual or information accompanying the product. This limited warranty does not cover damages or defects due to normal wear and tear, lack of reasonable and proper maintenance, failure to follow operating instructions or Owner's Manual, misuse, lack of proper storage or accidents, nor does it cover routine maintenance parts and service. This limited warranty does not cover any defects due to repairs or alterations made to the product made by anyone other than LITTLE WONDER or its registered dealers.

You must maintain your LITTLE WONDER Blower by following the maintenance procedures described in the owner's manual. Such routine maintenance, whether performed by you or a registered dealer, is at your expense.

LITTLE WONDER MAKES NO EXPRESS OR IMPLIED WARRANTIES REPRESENTATIONS OR PROMISES EXCEPT THOSE CONTAINED HEREIN. THERE ARE NO OTHER WARRANTIES, INCLUDING WARRANTIES OF MERCHANTABILITY AND FITNESS FOR A PARTICULAR PURPOSE. ALL WARRANTIES OTHER THAN THE EXPRESS WARRANTY SET FORTH ABOVE ARE SPECIFICALLY DISCLAIMED. THE DURATION OF ANY IMPLIED WARRANTY, INCLUDING MERCHANTABILITY AND FITNESS FOR A PARTICULAR PURPOSE, IS LIMITED TO THE DURATION OF THIS WRITTEN LIMITED WARRANTY. LITTLE WONDER DISCLAIMS ALL LIABILITY FOR INDIRECT, INCIDENTAL AND/OR CONSEQUENTIAL DAMAGES IN CONNECTION WITH THE USE OF THE LITTLE WONDER BLOWER PRODUCTS COVERED BY THIS WARRANTY. SOME STATES DO NOT ALLOW LIMITATIONS ON HOW LONG AN IMPLIED WARRANTY LASTS AND/OR DO NOT ALLOW THE EXCLUSION OR LIMITATION OF INCIDENTAL OR CONSEQUENTIAL DAMAGES, SO THAT ABOVE LIMITATIONS AND EXCLUSIONS MAY NOT APPLY TO YOU. THIS WARRANTY GIVES YOU SPECIFIC LEGAL RIGHTS, AND YOU MAY ALSO HAVE OTHER RIGHTS WHICH VARY FROM STATE TO STATE.

**LITTLE WONDER®**

**SCHILLER GROUNDS CARE, INC.  
1028 STREET ROAD, P.O. BOX 38  
SOUTHAMPTON, PA 18966**

**PHONE 877-596-6337 • FAX 215-357-8045**

**[www.littlewonder.com](http://www.littlewonder.com)**