

MAN 4167917
Rev. C 02-2017



MODELS:

75-70855A

MOWER DECK-48" MD448

S/N 0453 to present

75-70860A

MOWER DECK-60" MD460

S/N 02796 to present

75-70865A

MOWER DECK-72" MD472

S/N 01164 to present



OP/PARTS MANUAL

CALIFORNIA PROPOSITION 65



WARNING: Cancer and Reproductive Harm - www.P65Warnings.ca.gov.



ADVERTENCIA: Cáncer y Daño Reproductivo - www.65Warnings.ca.gov.

ROTARY MOWER

IMPORTANT MESSAGE

Thank you for purchasing this Schiller Grounds Care, Inc. product. You have purchased a world class product, one of the best designed and built anywhere.

This product comes with an Owner/Operator's Manual. The useful life and good service you receive from this product depends to a large extent on how well you read and understand this manual. Treat this product properly and adjust it as instructed, and it will give you many years of reliable service.

See a Schiller Grounds Care, Inc. dealer for any service or parts needed. Schiller Grounds Care, Inc. service ensures that you continue to receive the best results possible from Schiller Grounds Care, Inc. products. You can trust Schiller Grounds Care, Inc. replacement parts because they are manufactured with the same high precision and quality as the original parts.

Schiller Grounds Care, Inc. designs and builds its equipment to serve many years in a safe and productive manner. For longest life, use this product only as directed in the manual, keep it in good repair and follow safety warnings and instructions. You'll always be glad you did.

Schiller Grounds Care, Inc.
One Bob Cat Lane
Johnson Creek, WI 53038-0469

TABLE OF CONTENTS	FIGURES	PAGE
INTRODUCTION / SPECIFICATIONS		4
SAFETY		5-8
DECALS		9, 10
ASSEMBLY INSTRUCTIONS		11
INSTALLATION		12
OPERATION.....		13
SERVICE.....		14-18
PARTS SECTION.....		19
DECK PARTS 48".....	FIGURE 1	20, 21
DECK PARTS 60".....	FIGURE 2	22, 23
DECK PARTS 72".....	FIGURE 3	24, 25
FRAME PARTS 48".....	FIGURE 4	26, 27
FRAME PARTS 60".....	FIGURE 5	28, 29
FRAME PARTS 72".....	FIGURE 6	30, 31
HITCH & DRIVE PARTS	FIGURE 7	32, 33
SPINDLE PARTS	FIGURE 8	34, 35
FLIP-UP DECKS	FIGURE 9	36, 37

DESCRIPTION

A full-floating rotary mower deck is designed to fit all Steiner power units with the quick hitch front lift. Three sizes match the power unit to the application. These decks are easy to attach and detach allowing interchange with the many other front mounted attachments. The side discharge rotary mower provides even distribution of clippings while the full-floating deck follows the contours of the terrain for an even cut with cutting height controlled by the front caster wheels and full width rear roller. The deck can be safely serviced and cleaned while still attached to the tractor. Convenient handles enable the deck to be lifted vertically over 90 degrees so the blades are fully exposed. Exceptional visibility and maneuvering is possible with this front mounted design mower.

SPECIFICATIONS

Model	75-70855A	75-70860A	75-70865A
Overall Width with Chute:	61"	73 3/4"	86 1/4"
Overall height:	19"	19"	19"
Overall length:	49-1/2"	48-3/4"	55"
Cutting Width:	47"	59-3/8"	72"
Cutting Height:	1" to 4-1/2"	1" to 4-1/2"	1" to 4"
Blades:	3 - 16-1/4" blades	3 - 20-1/2" blades	3 - 24-3/4" blades
Weight:	330 lbs.	360 lbs.	470 lbs.

NOTICE !!!

Unauthorized modifications may present **extreme** safety hazards to operators and bystanders and could also result in product damage.

Schiller Grounds Care, Inc. strongly warns against, rejects and disclaims any modifications, add-on accessories or product alterations that are not designed, developed, tested and approved by Schiller Grounds Care, Inc. Engineering Department. Any Schiller Grounds Care, Inc. product that is altered, modified or changed in any manner not specifically authorized after original manufacture—including the addition of “after-market” accessories or component parts not specifically approved by CGC, Inc.—will result in the Schiller Grounds Care, Inc. Warranty being voided.

Any and all liability for personal injury and/or property damage caused by any unauthorized modifications, add-on accessories or products not approved by Schiller Grounds Care, Inc. will be considered the responsibility of the individual(s) or company designing and/or making such changes. Schiller Grounds Care, Inc. will vigorously pursue full indemnification and costs from any party responsible for such unauthorized post-manufacture modifications and/or accessories should personal injury and/or property damage result.



This symbol means:

ATTENTION!
BECOME ALERT!

Your safety and the safety of others is involved.

Signal word definitions:

The signal words below are used to identify levels of hazard seriousness. These words appear in this manual and on the safety labels attached to Schiller Grounds Care, Inc. machines. For your safety and the safety of others, read and follow the information given with these signal words and/or the symbol shown above.

DANGER

DANGER indicates an imminently hazardous situation which, if not avoided, **WILL** result in death or serious injury.

WARNING

WARNING indicates a potentially hazardous situation which, if not avoided, **COULD** result in death or serious injury.

CAUTION

CAUTION indicates a potentially hazardous situation which, if not avoided, **MAY** result in minor or moderate injury. It may also be used to alert against unsafe practices or property damage.

CAUTION

CAUTION used without the safety alert symbol indicates a potentially hazardous situation which, if not avoided, **MAY** result in property damage



Model

Serial Number

SCHILLER GROUNDS CARE, INC.
One Bob – Cat Lane
Johnson Creek, WI 53038

MODEL NUMBER: This number appears on sales literature, technical manuals and price lists.

SERIAL NUMBER: This number appears only on your unit. It contains the model number followed consecutively by the serial number. Use this number when ordering parts or seeking warranty information.

GENERAL SAFETY

1. Read and understand the Owner's Manual before attempting to operate this machine.
2. Operate all controls from the operator's seat, (if so equipped). **NO RIDERS.**
3. Keep all shields in place and safety switches adjusted properly.
4. Do not leave equipment unattended. Park on a level surface, set parking brake, STOP the engine and remove the key.
5. Do not allow minors or the inexperienced to operate this machine.
6. Keep people and pets a safe distance away from machine using power driven attachments. Injury could result from flying debris.

WARNING

7. Do not attempt to work on unit or any attachments with engine running!
8. Wear all the necessary protective clothing and personal safety devices to protect your head, eyes, ears, hands and feet. Operate the machine only in daylight or in good artificial light.

IMPORTANT Safe Operation Practices for Mowers

WARNING

This cutting machine is capable of amputating hands and feet and throwing objects. Failure to observe the following safety instructions could result in serious injury or death.

I GENERAL OPERATION

- Read, understand, and follow all instructions in the manual and on the machine before starting.
- Only allow responsible adults, who are familiar with the instructions, to operate the machine.
- Clear the area of objects such as rocks, toys, wire, etc., which could be picked up and thrown by the blade.
- Be sure the area is clear of other people before mowing. Stop the machine if anyone enters the area.
- Never carry passengers.
- Do not mow in reverse unless absolutely necessary. Always look down and behind before and while backing.
- Be aware of the mower discharge direction and do not point it at anyone. Do not operate the mower without the discharge chute in place and in the locked position.
- Only lift the chute for transport.
- Slow down before turning.
- Never leave a running machine unattended. Always turn off blades, set parking brake, stop engine, and remove keys before dismounting.
- Turn off blades when not mowing.
- Stop engine before unclogging discharge chute.
- Mow only in good light, keeping away from holes and hidden hazards.

- Do not operate the machine while under the influence of alcohol or drugs.
- Watch for traffic when operating near or crossing roadways.
- Use extra care when loading or unloading the machine into a trailer or truck.
- Always wear safety goggles or safety glasses with side shields when operating mower.

II SLOPE OPERATION

WARNING

Slopes are a major factor related to loss-of-control and tip-over accidents, which can result in severe injury or death. All slopes require extra caution. If you feel uneasy on it, do not mow it.

DO:

- Mow up and down slopes, not across.
- Remove obstacles such as rocks, tree limbs, etc.
- Watch for holes, ruts, or bumps. Uneven terrain could overturn the machine. Tall grass can hide obstacles.
- Use slow speed on slopes.
- Follow the manufacturers recommendations for wheel weights or counterweights to improve stability.
- Use extra care with grass catchers or other attachments. These can change the stability of the machine.
- Keep all movement on the slope slow and gradual. Do not make sudden changes in speed or direction.
- Avoid stopping or starting on a slope. If tires lose traction, disengage the blades and proceed slowly straight down the slope.

DO NOT:

- Do not turn on slopes unless necessary, and then, turn slowly and gradually downhill, if possible.
- Do not mow drop-offs, ditches, or embankments. The mower could suddenly turn over if a wheel is over the edge of a cliff or ditch, or if an edge caves in.
- Do not mow on wet grass. Reduced traction could cause sliding.
- Do not try to stabilize the machine by putting your foot on the ground.
- Do not use grass catcher on steep slopes.

III CHILDREN



Tragic accidents can occur if the operator is not alert to the presence of children. Children are often attracted to the machine and the mowing activity. Never assume that children will remain where you last saw them.

- Keep children out of the mowing area and under the watchful eye of another responsible adult.
- Be alert and turn machine off if children enter the area.
- Before and when backing, look behind and down for small children.
- Never carry children as passengers, even with the blades off. They may suddenly fall off and be seriously injured or interfere with safe machine operation.
- Never allow children to operate the machine.
- Use extra care when approaching blind corners, shrubs, trees, or other objects that may obscure vision.

IV SERVICE

- Use extra care in handling gasoline and other fuels. They are flammable and the vapors are explosive.
 - Use only an approved container.
 - Never remove gas cap or add fuel with engine running. Allow engine to cool before refueling.
 - Do not smoke.
 - Never add or drain fuel with machine indoors.
 - Never store the machine or fuel container inside where there is an open flame, such as in a water heater.
- Never run the machine in a closed area.
- Keep nuts and bolts, especially blade attachment bolts, tight and keep equipment in good condition.
- Never tamper with safety devices. Check their proper operation regularly.
- Keep machine free of grass, leaves, and other debris build-up. Clean up oil or fuel spillage. Allow machine to cool before storing.
- Stop and inspect the equipment if you strike an object. Repair, if necessary, before re-starting.
- Never make adjustments or repairs with the engine running.
- Discharge chute components are subject to wear, damage, and deterioration, which could expose moving parts or allow objects to be thrown. Frequently check components and replace with manufacturer's recommended parts, when necessary.
- Mower blades are sharp and can cut. Wrap the blade(s) or wear gloves, and use extra caution when servicing them.
- Check brake operation frequently (if equipped). Adjust and service as required.



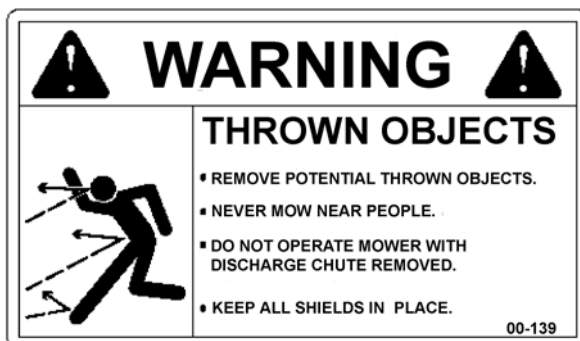
Location:

On mower deck, front center.



Location:

On mower deck top front center, both sides.

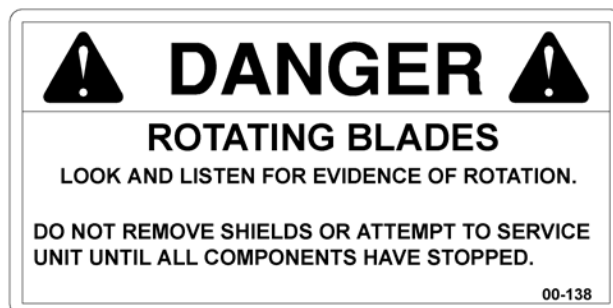


Location:

On mower deck.

Location:

On mower deck top shield.



1. Remove the mower from the shipping crate.
2. Remove top shield.
3. Install both left and right hitch arms as shown on page 32, in Figure 7. Torque the 1/2" attaching bolts to 85 ft. lbs.

Install the 1/2" bolt and the 1/2" nut, which holds the two hitch arms together. Torque to 85 ft. lbs.

4. Be sure that the mower main drive belt is installed correctly on all pulleys. Check spring-loaded idler arm position. Choose a mounting hole in the deck which allows the idler arm to lean toward the drive shaft, with the spring attached. Fasten spring to chain and idler arm as shown on Page 16.

Choose a chain link that stretches spring approximately 1" on 75-70860A or 1-1/2" on 75-70855A & 75-70865A.

5. Check bolts mounting spindles to the deck. Torque should be 35-40 ft. lbs.
6. Check blade bolts. Torque should be 75 - 85 ft. lbs.
7. Check 1/4" cap screws on pulley bushings for 75-70865A (page 24 Figure 3, Item 9). Torque should be 95 inch pounds. Tighten these cap screws in alternating sequence 10-12 times to assure equal torque on all cap screws.
8. Reinstall the top shield.
9. Remove 1/2" locknut on height adjustment lever (located in the hardware bag) and position correctly as shown for:
75-70855A (page 26, Figure 4)
75-70860A (page 28, Figure 5)
75-70865A (page 30, Figure 6)
10. Remove the drive pulley shield and install the proper drive belt for the power unit. Replace shield.
11. The chute is shipped in the locked position. With the chute brackets in the locked position, attach the chute to the chute bracket using the hardware located in the hardware as shown for:
75-70855A (page 20, Figure 1, Item 9)
75-70860A (page 22, Figure 2, Item 9)
75-70865A (page 24, Figure 3, Item 9)

Leave the hardware loose. Adjust the chute for the best fit against the deck. NOTE: There should be minimal gaps between the chute and deck, and the chute should hit the deck before the bracket does. Tighten hardware until bolt heads are partially pulled into the rubber of the chute.

12. Attach mower to power unit. See Page 11 for installation instructions. See Pages 8 & 9 for safety instructions and Page 14 for operating instructions.

ATTACHING MOWER TO TRACTOR:

- Operate latch control to open hitch latches.
- Drive tractor into position aligning the quick hitch.
- Be sure both latches engage fully and are placed in the locked position.
- **Stop engine!** Do not attempt to install drive belt with engine running.
- Release idler assembly to facilitate easy installation of the drive belt.
- Put belt over drive pulleys and engage or adjust idler assembly.
(See Power Unit Operator's Manual for PTO belt tension adjustments.)
- Set mower to desired cutting height.
- Start engine and engage PTO slowly to prevent shock load on mower components.
- Mow with front lift lever in "FLOAT" position only.

REAR WEIGHT REQUIREMENTS

The table of requirements for rear weights is based upon average mowing conditions and operator's weight of 150 lbs. The recommendations may vary with the weight of the operator, other accessories, and the mowing conditions. It is the operator's responsibility to determine the correct amount of weight needed to improve stability. All weights must be removed when the mower is removed. (See Caution in Power Unit Operator's manual.)

POWER UNIT MODEL	48" DECK	60" DECK	72" DECK
220 / 230	0 WEIGHT	0 WEIGHTS	2 WEIGHTS
410	2 WEIGHTS	4 WEIGHTS	THIS DECK IS NOT RECOMMENDED
420 / 430	2 WEIGHTS	4 WEIGHTS	5 WEIGHTS
425	2 WEIGHTS	2 WEIGHTS	4 WEIGHTS
525	0 WEIGHT	0 WEIGHT	0 WEIGHT
440 / 450	0 WEIGHT	1 WEIGHT	2 WEIGHTS



Observe all safety decals.

Keep all shields in place. Do not operate mower with discharge chute removed.

Do not operate mower with other persons in the area. Irregularities in ground surface can permit foreign material to be propelled from beneath deck to cause serious injury or death.

Before leaving tractor, stop on a level surface, move Forward - Reverse control to neutral position, disengage PTO, set parking brake, lower mower deck and stop engine.

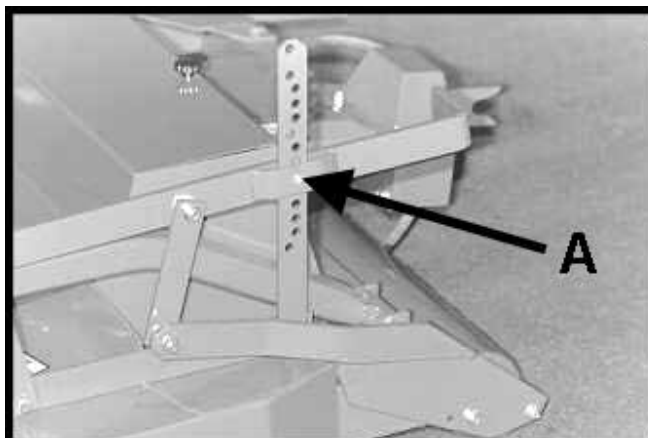
Remove key from ignition if maintenance procedures are to be performed or tractor is to be left unattended.

OPERATING INSTRUCTIONS

- Do not operate mower without discharge chute in place and in the locked position. To unlock for transport, remove the clevis pin and swing the chute up so it rests on the deck, and reinstall the clevis pin in one bracket hole. To lock, remove the clevis pin from bracket and swing chute down and reinstall clevis pin through both brackets.
- Mow with front lift lever in "FLOAT" position only.
- Engage PTO slowly at low engine r.p.m.
- Mower is designed to operate at full throttle for mowing heavy turf, but 3/4 throttle is adequate for average conditions. Set mower blade speed with throttle and control ground speed with Forward - Reverse control.
- Use extreme caution when operating on hills. Mow up and down whenever possible.
- See Page 11 for weight recommendations.

SETTING MOWER CUTTING HEIGHT

- Lift mower deck off the ground and shut off tractor engine.
- Remove clevis pin at location **A** from height adjustment link.
- Raise or lower deck to desired height.
- Replace clevis pin into height adjustment link.



MAINTENANCE

Visual inspection for loose parts and accumulation of grass and dirt.

Clean accumulation of grass clippings from beneath deck daily for better mowing performance.

Keep blades sharp. Check the tips of the blades for wear.

In addition to daily maintenance, grease roller and all bearings.

Spindle housings must be kept full of grease. Grease spindles until grease "shows" at the relief hole under the spindle drive pulley.

NOTE: The relief hole is under the spindle hub and is not visible. As grease enters the spindle housing you can hear the sound of escaping air at the relief hole. Stop greasing when the sound of escaping air ceases.

Check drive belt tension. See Drive Belt Installation on Page 16.

Check 1/4" cap screws on pulley bushings. Torque should be 95 inch pounds. Tighten these cap screws in alternating sequence 10-12 times to assure equal torque on all cap screws.

Check blade bolts. Torque should be 75-85 ft. lbs.

In addition to daily and 25 hour maintenance, remove the drive belt and check for cracks or wear. Rotate each spindle to check for roughness which would indicate bearing wear. Remove and sharpen blades, clean and wash deck prior to storage. The acid in grass clippings causes premature corrosion and rusting of mower parts.

Grease all bearings after washing.

ADJUSTMENTS

Sharpening blades

Be careful while sharpening blades that the corners of the blade do not become rounded at the tips. This reduces the blades overlap and will cause skipping. While sharpening, it is essential to ensure the balance of the blades is maintained to prevent vibration. Blade bolt torque should be 75-85 ft. lbs. Rotate blades after re-installing to check for bent or bowed blades and blade alignment.

Blade alignment

When installing sharpened blades or new blades be sure the mating surfaces are clean and the retaining washer is not bent. Check for bent blades by rotating blades until tips are near each other. (It is easier to do this with main drive belt idler spring unhooked.)

Leveling mower deck

The front to rear leveling adjustment is provided by two slots in the linkage which supports the front of the deck. This allows each side to be adjusted independently. Check the blade level with mower resting on a level floor and the cutting height set at about 2-1/2" setting. Measure to the tip of the left blade at the rear, then rotate the blade 180 degrees and measure again to the tip of the blade at the front. The cutting height should be equal or 1/16" lower at the front. Change adjustment in the left slot as required and measure again until proper setting is reached. Repeat procedure for blade at right end of the deck and adjust right slot.

TO REMOVE BELT:

Remove the six 1/4" X 3/4" bolts from the flip-up braces and remove the pivot stop pin and the idler spring. Remove the braces.

- With the idler spring released, move the idler toward the drive shaft.
- Slip belt off the outer spindle pulleys.
- Slip belt off the front center idler and spindle.
- Remove belt.

TO INSTALL BELT:

- Form loop for drive pulley and idler pulley as shown. (Photos 2 & 3)
- Slip loop over drive pulley on left hitch arm. (Photos 2 & 3)
- Form a loop around the center spindle pulley and fixed idler pulley. (Photos 2 & 3)
- Position belt on the outer spindle pulleys. (Photos 2 & 3)

Re-install hitch arms and pivot braces. Torque 1/2" attaching bolts to 85 ft. lbs. (Photos 2 & 3)

Hook idler spring in place.

Choose chain link which stretches spring approximately one inch on 75-70860A or 1-1/2" on 75-7085A5 & 75-70865A.

- Re-install top shield.

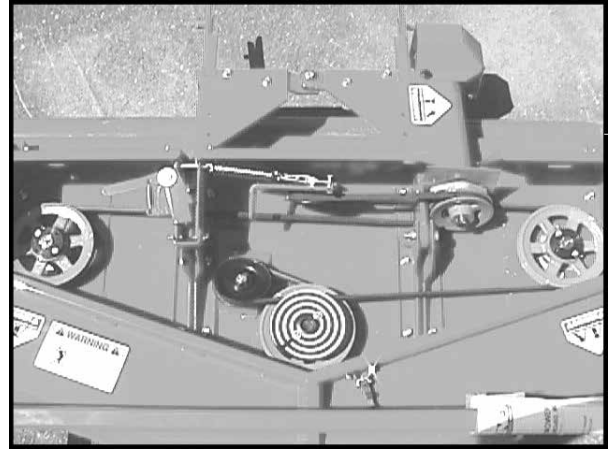


PHOTO 2

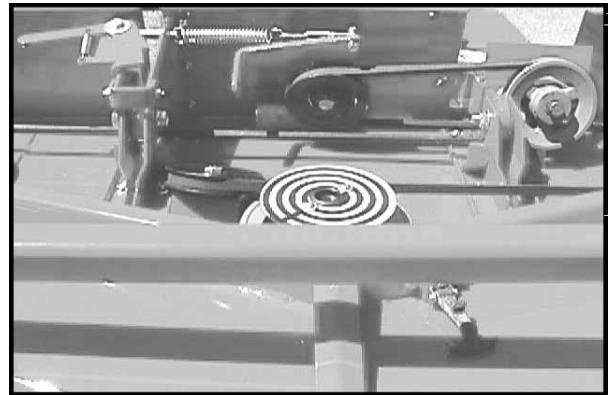


PHOTO 3

USING THE FLIP-UP OPTION ON THE 75-70855, 75-70860 AND 75-70865 ROTARY MOWERS

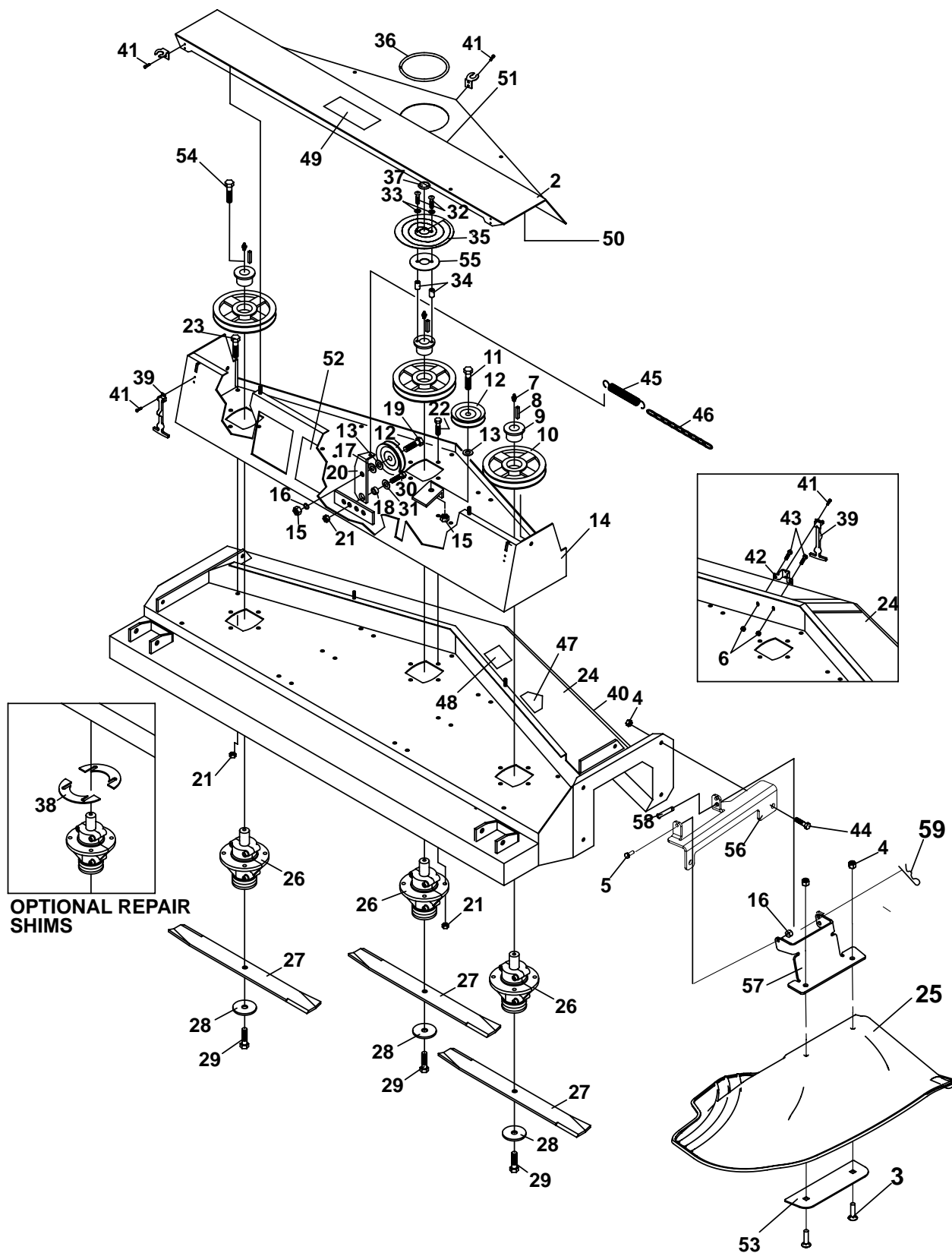
1. Stop on a level surface, set parking brake and shut off the tractor.
2. Lift the deck.
3. Remove the top deck shield and set aside.
4. Standing at the front of the deck, pull the handle on the idler arm so the belt comes loose.
5. Remove the belt from the drive pulley.
6. Remove the presto pin and slide pin from holes.
7. Grasp the handles and lift the deck up and back until you hear a click. This indicates that the latch has engaged.
8. Lower the deck until the roller touches the ground. This gives stability when working on the deck.
9. Complete your work under the deck.
10. Start the tractor and lift the deck again. Shut off the tractor.
11. Grasp the handles at the front of the deck. Push the deck back slightly and release the catch.
12. Pull the deck forward and down, keeping a firm grip on the handles.
13. Lower the deck to the ground.
14. Replace the pin and clip in the hole above the lift arm.
15. Grasp the idler arm handle again and pull to stretch the spring. Place the belt onto the drive pulley.
16. Make sure the belt is around all pulleys. Release the idler arm.
17. Replace the top shield and secure with the rubber latches.
18. Moving the power unit with the deck in the flipped up position is not recommended. Serious injury and or damage could result.

PARTS SECTION

DECK PARTS 48"

ROTARY MOWER

FIGURE 1



ROTARY MOWER

DECK PARTS 48"

FIGURE 1

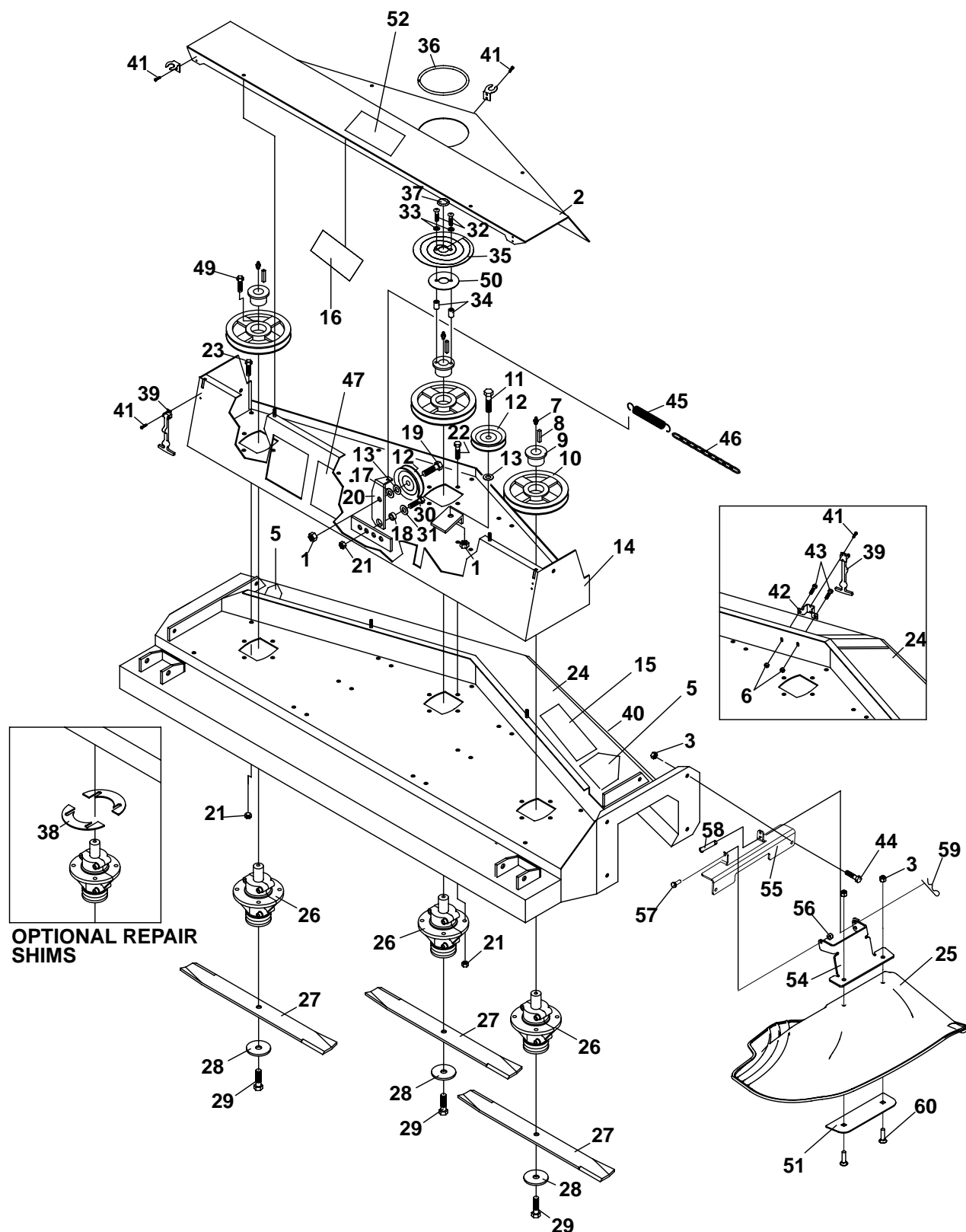
ITEM	PART NO.	DESCRIPTION	QTY	ITEM	PART NO.	DESCRIPTION	QTY
1*	4116761	LABEL-MADE IN USA	1	38	64-866	SHIM-SPINDLE 22 GA.	1
2	4167940	SHIELD-TOP DECK	1		(1 PAIR OPTIONAL)		
	INCLUDES ITEMS 39, 49, 50 & 41				64-867	SHIM-SPINDLE 16 GA.	1
					(1 PAIR OPTIONAL)		
3	64018-49	BLT-CRG 3/8-16X1-1/2	2		64-868	SHIM-SPINDLE 12 GA.	1
4	64229-03	NUT-NYLON LOCK 3/8-16	2		(1 PAIR OPTIONAL)		
5	64123-89	BLT-HEX 1/4-20X3/4	2	39	47-090	LATCH-RUBBER 3" LONG	3
6	64141-2	NUT-WLF 1/4-20	2	40	4162914	LABEL-DECK SIZE, 48"	6
7	85010N	GREASE FITTING-1/4	3	41	04-007	POP RIVET-1/8 X 1/8 SS	12
8	64164-12	KEY-1/4X1/4X1 SQ END	3	42	64-900.7	BRKT-TOP SHIELD LATCH	1
9	83-H16	BUSHING-H X 1" SPLIT TYPE	3	43	64139-02	BLT-WLF 1/4-20X1/2	2
10	83-BK50H	PULLEY-5" H1 BUSHING	3	44	64123-50	BOLT-3/8-16X1	3
11	64123-117	BOLT-HEX 1/2-13X1-1/2	1	45	41-052	SPRING	1
12	83-012	IDLER-"V" 1/2" ID X 4-1/2" OD	2	46	56-055-02	CHAIN #2 STRAIGHT LINK 2IN	1
13	99-B12	WASHER-1/4 X 17/32 X 1-1/8	2	47	00-092	DECAL-HANDS & FEET	2
14	4167937	UPR DK WLDMT	1	48	00-139	DECAL-WARNING	2
	INCLUDES ITEM 52			49	00-138	DECAL-DANGER	1
				50	00-129	DECAL-BELT INSTALL	1
					(LOCATED UNDERNEATH TOP SHIELD)		
15	64141-13	HEX, NUT 1/2-13	2	51	4158620	DECAL-STEINER	1
16	64229-01	NUT-NYLON LOCK 1/4-20	2	52	00-093	DECAL-WARNING	1
17	64163-67	WASHER-.516X1X12GA	1	53	4173063.7	PLATE-CHUTE	1
18	85-B29	BUSHING-.406 X .740 X .258	1	54	64123-114	BLT-HEX 1/4-20X1	6
19	64123-235	BOLT-HEX1/2-13 X 1-3/4	1	55	60-568.7	SUPPORT INDICATOR	1
20	40-329.7	IDLER ARM	1	56	4167719.17	BRKT-MNTG,DECK SIDE	1
21	64141-4	NUT-WLF 3/8-16	18	57	4175881.7	BRKT-MNTG,CHUTE SIDE	1
22	64139-18	BLT-WLF 3/8-16X1-1/4	12	58	64188-65	PIN-CLEVIS 1/4 X .62	1
23	64139-21	BLT-WLF 3/8-16X3/4	5	59	64168-2	COTTER-HAIRPIN.08X1.19	1
24	4167938	DECK-MOWER	1				
	INCLUDES ITEM 47 & 48						
25	4172328	CHUTE-SIDE DISCHARGE	1				
26	87-143	SPINDLE	3				
27	79-062	BLADE-16-1/4" .700 AIR LIFT	3				
	79-064	BLADE-16-1/4" 1-3/8 AIR LIFT	3				
	(OPTIONAL)						
28	99-B14	WASHER-1/4 X 1/2 ID X 3 OD	3				
29	91-0810	BOLT-1/2 X 1-1/4 NF	3				
30	64123-50	BOLT-HEX 3/8-16X1	1				
31	64-799	WASHER-13/32 X 1-9/32	1				
32	99-K38	BOLT-1/4 X 1-1/4 BH	2				
33	453023	WASHER-FLAT.265X.625X .125	2				
34	64-687.7	SPACER	2				
35	00-137	DECAL-SPIRAL INDICATOR	1				
36	56-059-19	TRIM-LOC-RUBBER 19"	1				
37	06-010	CAP PLUG-1"	1				

* NOT ILLUSTRATED

DECK PARTS 60"

ROTARY MOWER

FIGURE 2



ROTARY MOWER

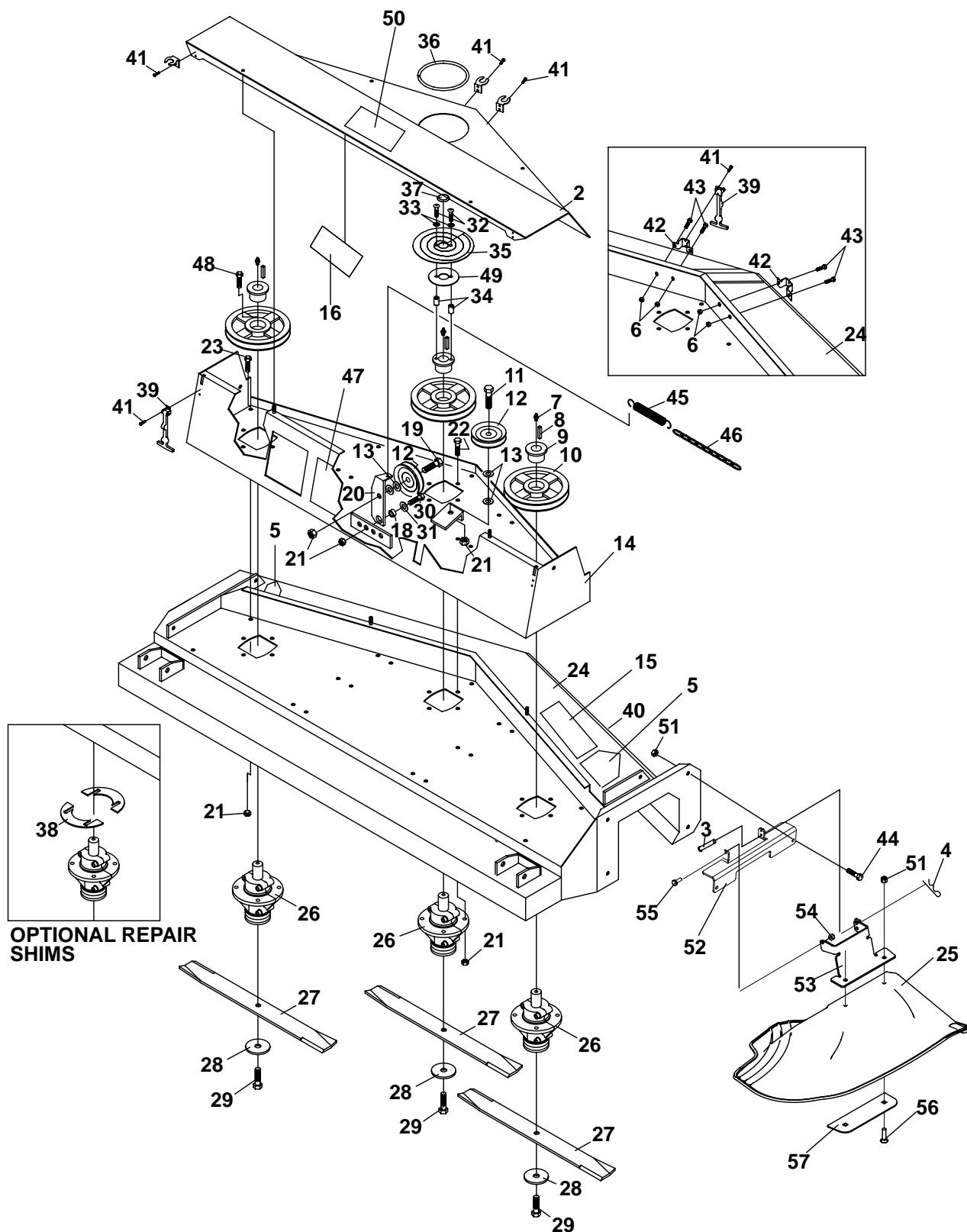
DECK PARTS 60"

FIGURE 2

ITEM	PART NO.	DESCRIPTION	QTY	ITEM	PART NO.	DESCRIPTION	QTY
1	64141-13	NUT-WLF 1/2-13	2	38	64-866	SHIM-SPINDLE 22 GA. (1 PAIR OPTIONAL)	1
2	4167942	SHIELD-TOP DECK INCLUDES ITEMS 39,41,52,53	1		64-867	SHIM-SPINDLE 16 GA. (1 PAIR OPTIONAL)	1
3	64229-03	NUT-NYLON LOCK 3/8-16	5		64-868	SHIM-SPINDLE 12 GA. (1 PAIR OPTIONAL)	1
4	64123-16	BLT-HEX 3/8-16X1-1/4	3	39	47-090	LATCH-RUBBER 3" LONG	3
5	00-092	DECAL-DANGER	2	40	4163311	LABEL-DECK SIZE 60"	1
6	64141-2	NUT-WLF 1/4-20	2	41	04-007	POP RIVET-1/8 X 1/8 SS	12
7	85010N	GREASE FITTING-1/4	3	42	64-900.7	BRCKT-TOP SHIELD LATCH	1
8	64164-12	KEY-1/4X1/4X1 SQ END	3	43	64139-02	BLT-WLF 1/4-20X1/2	2
9	83-H16	BUSHING-H X 1" SPLIT TYPE	3	44	64123-50	BOLT-3/8-16 X 1	2
10	83-BK72H	SHEAVE- BK72H	3	45	41-092	SPRING	1
11	64123-117	BOLT-HEX 1/2-13X1-1/2	1	46	6107645	CHAIN, IDLER STOP	1
12	83-012	IDLER-"V" 1/2" ID X 4-1/2" OD	2	47	00-093	DECAL-WARNING	1
13	99-B12	WASHER-1/4 X 17/32 X 1-1/8	2	48*	4116761	LABEL-MADE IN USA	1
14	4167933	UPR DK WLDMT INCLUDES ITEM 47	1	49	64123-114	BLT-HEX 1/4-20X1	6
15	00-139	DECAL-WARNING	1	50	60-568.7	SUPPORT INDICATOR	1
16	00-129	DECAL-BELT INSTALLATION	1	51	4173063.7	PLATE-CHUTE	1
17	64163-67	WASHER-.516X1X12GA	1	52	00-138	DECAL-THROWN OBJECTS	1
18	85-B29	BUSHING-.406 X .740 X .258	1	53*	4158620	LABEL-STEINER	1
19	64123-235	BOLT-HEX 1/2-13 X 1-3/4	1	54	4175400.7	BRKT-MNTG,CHUTE SIDE	1
20	40-329.7	IDLER ARM	1	55	4167717.17	BRKT-MNTG,DECK SIDE 60	1
21	64141-4	NUT-WLF 3/8-16	18	56	64229-01	NUT-NYLON LOCK 1/4-20	2
22	64139-18	BLT-WLF 3/8-16X1-1/4	12	57	64123-89	BLT-HEX 1/4-20X3/4	2
23	64139-21	BLT-WLF 3/8-16X3/4	5	58	64188-65	PIN-CLEVIS 1/4 X .62	1
24	4167934	DECK-MAIN INCLUDES ITEMS 5, 15	1	59	64168-2	COTTER-HAIRPIN.08X1.19	1
25	4172328	CHUTE-SIDE DISCHARGE	1	60	64018-49	BLT-CRG 3/8-16 X 1-1/2	2
26	87-143	SPINDLE-MOWER	3				
27	79-050	BLADE-20-1/2" .700 AIR LIFT	3				
	79-053	BLADE-20-1/2" 1-3/8 AIR LIFT (OPTIONAL)	3				
28	99-B14	WASHER-1/4 X 1/2 ID X 3 OD	3				
29	91-0810	BOLT-1/2 X 1-1/4 NF	3				
30	64123-50	BOLT-HEX 3/8-16X1	1				
31	64-799	WASHER-13/32 X 1-9/32	1				
32	99-K38	BOLT-1/4 X 1-1/4 BH	2				
33	453023	WASHER-FLAT.265X.625X .125	2				
34	64-687.7	SPACER	2				
35	00-137	DECAL-SPIRAL INDICATOR	1				
36	56-059-19	TRIM-LOC-RUBBER 19"	1				
37	06-010	CAP PLUG-1"	1				

* NOT ILLUSTRATED

FIGURE 3



ROTARY MOWER

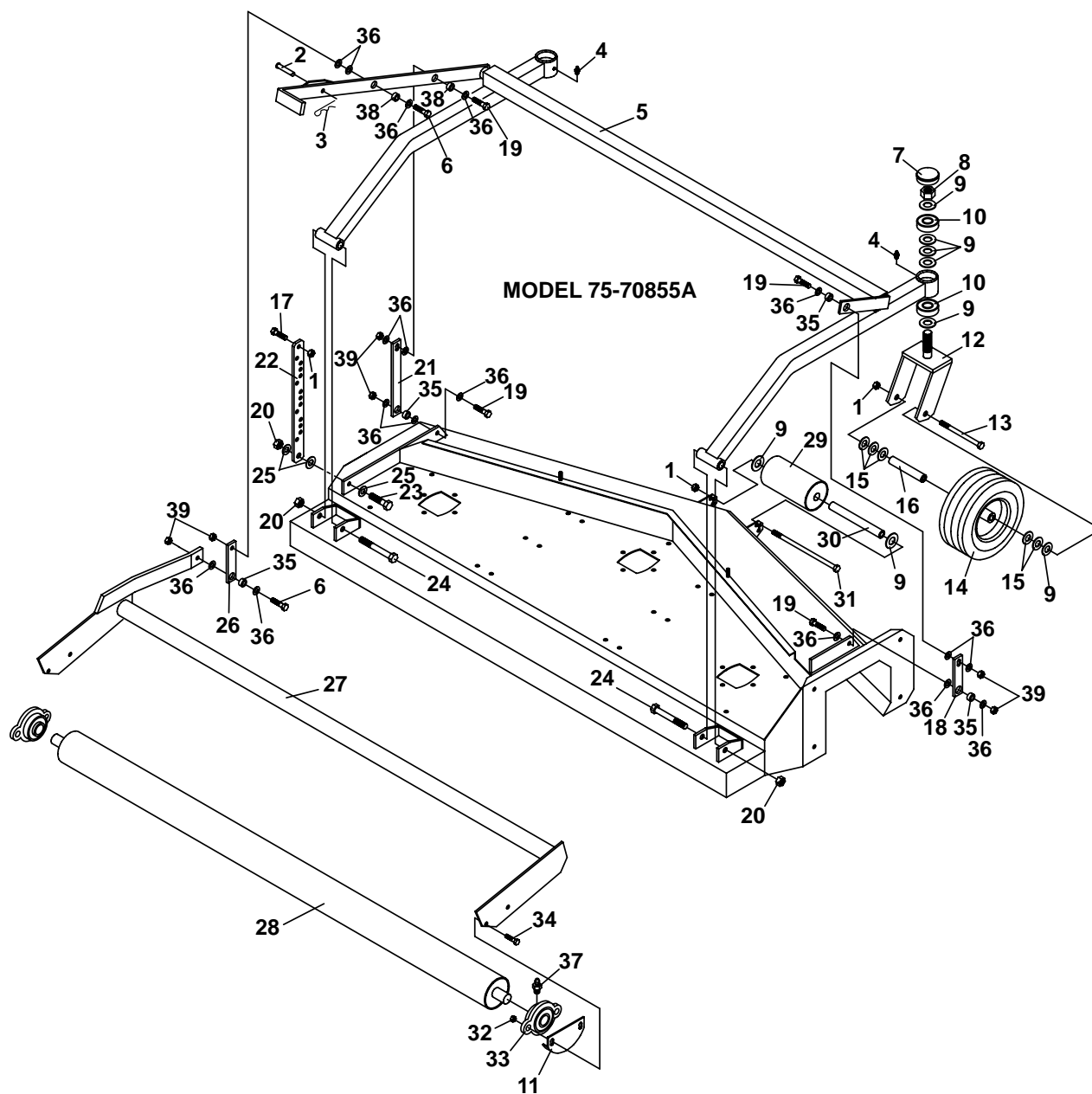
DECK PARTS 72"

FIGURE 3

ITEM	PART NO.	DESCRIPTION	QTY	ITEM	PART NO.	DESCRIPTION	QTY
1*	4116761	LABEL-MADE IN USA	1	64-867	SHIM-SPINDLE 16 GA.	1	
2	4167941	SHIELD-TOP DECK	1	(1 PAIR OPTIONAL)			
		INCLUDES ITEM 16, 39, 41, 58		64-868	SHIM-SPINDLE 12 GA.	1	
				(1 PAIR OPTIONAL)			
3	64188-65	PIN-CLEVIS 1/4 X .62	1	39	47-090	LATCH-RUBBER 3" LONG	4
4	64168-2	COTTER-HAIRPIN.08X1.19	1	40	4162917	LABEL-DECK SIZE 72"	1
5	00-092	DECAL-DANGER	2	41	04-008	POP RIVET-1/8 X 1/8 SS	16
6	64141-2	NUT-WLF 1/4-20	4	42	64-900.7	BRCKT-TOP SHIELD LATCH	2
	85010N	GREASE FITTING-1/4	3	43	64139-02	BLT-WLF 1/4-20X1/2	4
8	64164-12	KEY-1/4X1/4X1 SQ END	3	44	64123-50	BOLT-3/8-16 X 1	2
9	83-H16	BUSHING-H X 1" SPLIT TYPE	3	45	41-051	SPRING	1
10	83-BK80H	SHEAVE- BK72H	3	46	6107645	CHAIN, IDLER STOP	1
11	64123-70	BOLT-HEX 1/2-13X1-1/2	1	47	00-093	DECAL-WARNING	1
12	83-034	IDLER-"V" 1/2" ID X 4-1/2" OD	2	48	64123-114	BLT-HEX 1/4-20X1	6
13	99-B12	WASHER-1/4 X 17/32 X 1-1/8	5	49	60-568.7	SUPPORT INDICATOR	1
14	4167935	UPR DK WLDMT	1	50	00-138	DECAL-THROWN OBJECTS	1
		INCLUDES ITEM 47		51	64229-03	NUT-NYLON LOCK 3/8-16	4
15	00-139	DECAL-WARNING	1	52	416773617	BRKT-MNTG,DECK SIDE	1
16	00-129	DECAL-BELT INSTALLATION	1	53	4175637.7	BRKT-MNTG,CHUTE SIDE	1
17*	4158620	LABEL-STEINER	1	54	64229-01	NUT-NYLON LOCK 1/4-20	2
18	85-B29	BUSHING-.406 X .740 X .258	1	55	64123-89	BLT-HEX 1/4-20X3/4	2
19	64123-87	BOLT-HEX 1/2-13 X 1-3/4	1	56	64018-49	BLT-CRG 3/8-16 X 1-1/2	2
20	40-329.7	IDLER ARM	1	57	4173063.7	PLATE-CHUTE	1
21	64141-4	NUT-WLF 3/8-16	22				
22	64139-18	BLT-WLF 3/8-16X1-1/4	12				
23	64139-21	BLT-WLF 3/8-16X3/4	7				
24	4175664	DECK-MAIN	1				
		INCLUDES ITEMS 5, 15					
25	4172328	CHUTE-SIDE DISCHARGE	1				
26	87-143	SPINDLE-MOWER	3				
27	79-068	BLADE-24-3/4" .700 AIR LIFT	3				
	79-069	BLADE-24-3/4" 1-3/8 AIR LIFT	3				
		(OPTIONAL)					
28	99-B14	WASHER-1/4 X 1/2 ID X 3 OD	3				
29	91-0810	BOLT-1/2 X 1-1/4 NF	3				
30	64123-50	BOLT-HEX 3/8-16X1	1				
31	64-799	WASHER-13/32 X 1-9/32	1				
32	99-K39	BOLT-1/4 X 1-1/4 BH	2				
33	453023	WASHER-FLAT.265X.625X .125	2				
34	64-688.7	SPACER	2				
35	00-137	DECAL-SPIRAL INDICATOR	1				
36	56-059-19	TRIM-LOC-RUBBER 19"	1				
37	06-010	CAP PLUG-1"	1				
38	64-866	SHIM-SPINDLE 22 GA.	1				
		(1 PAIR OPTIONAL)					

* NOT ILLUSTRATED

FIGURE 4



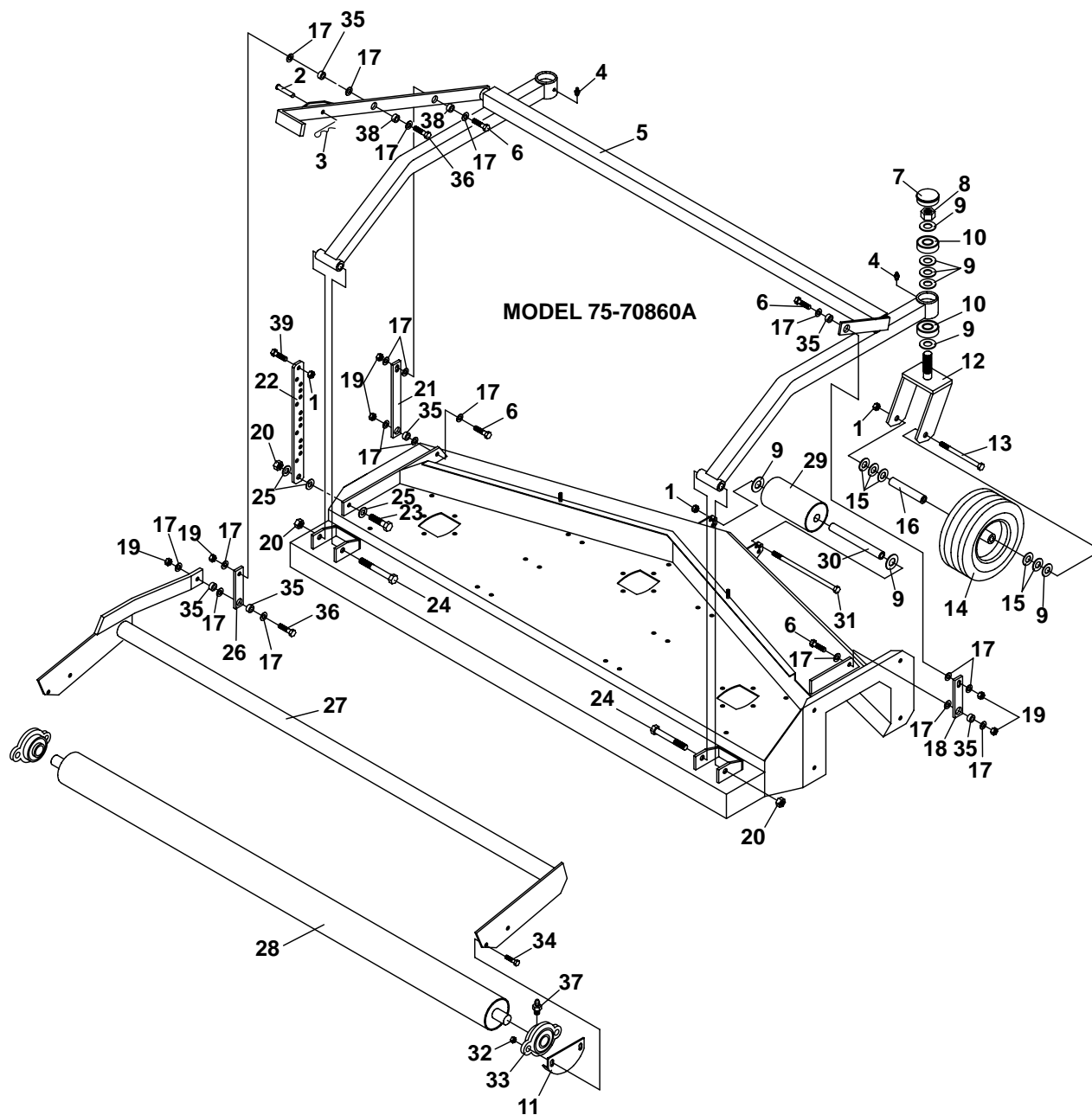
ROTARY MOWER

FRAME PARTS 48"

FIGURE 4

ITEM	PART NO.	DESCRIPTION	QTY	ITEM	PART NO.	DESCRIPTION	QTY
1	64141-4	NUT-WLF 3/8-16	4				
2	03-0610	CLEVIS PIN-3/8 X 1-1/4	1				
3	02-PP0318	PRESTO PIN-3/32 X 2-5/16	1				
4	85010N	GREASE FITTING-1/4	2				
5	62-725.7	FRAME-HEIGHT ADJ	1				
6	64123-67	BOLT-HEX 3/8-16X2	3				
7	53-060	HUB CAP-FOR MOWER	2				
8	99-AC12NF	LOCKNUT-CENTER 3/4 NF	2				
9	64163-06	WASHER-.768/.756X1.25X14	15				
10	55-Z9504AB	BALL BEARING-3/4 ID	4				
11	64-845.7	SHIELD-BEARING	2				
12	4132783.7	CASTER, MOWER	2				
13	64123-93	BLT-HEX 3/8-16X5	2				
14	53-186	WHEEL-10.25 X 3.25	2				
	(SERVICE ITEMS FOR HOOSIER TIRES)						
	55-112	BRG-ROLLER 5/8 ID X 1-3/8	1				
	53-187	RETAINER	2				
	(SERVICE ITEMS FOR OTR TIRES)						
	4169687	BRG-.625X1.375X2.25	1				
	4169688	RETAINER					
15	64163-16	WASHER-41/64X1, 3/8X12GA	12				
16	50-062	AXLE TUBE-CASTER WHL	2				
17	64139-21	BLT-WLF 3/8-16X3/4	1				
18	42-440.7	LINK-RIGHT LIFT	1				
19	99-K73	BOLT FLANGE 3/8-1 X1-1/2	4				
20	64229-05	LOCKNUT, 1/2-13 NYLON	3				
21	42-445.7	LINK-LEFT FRONT	1				
22	42-443.7	LINK-HEIGHT ADJUSTMENT	1				
23	64123-117	BOLT-HEX 1/2-13X1-1/2	1				
24	90-0832	BOLT-1/2-13 X 4	2				
25	64163-67	WASHER-.516X1X12GA	3				
26	42-442.7	LINK-MIDDLE	1				
27	62-869.7	FRAME-REAR ROLLER	1				
28	50-078.7	ROLLER-REAR	1				
29	50-105	ROLLER-FRONT	1				
	85-B11	BEARING-3/4" WOOD RLR	2				
30	50-074	AXLE-ANTI SCALP ROLLER	1				
31	64123-219	BOLT-HEX 3/8-16X6	1				
32	64141-6	NUT, 5/16-18	4				
33	55-FB16016	BEARING-160 FLANGE 1"	2				
34	64139-10	BOLT-FLANGE 5/16 X 1-1/4	4				
35	64-663	BUSHING-ADJUSTER LINK	5				
36	64-799	WASHER-13/32 X 1-9/32	16				
37	29-045	GREASE FITTING-1/4 45	5				
38	64-662	BUSHING-ADJUSTER LINK	2				
39	64229-03	NUT-NYLON LOCK 3/8-16	6				

FIGURE 5



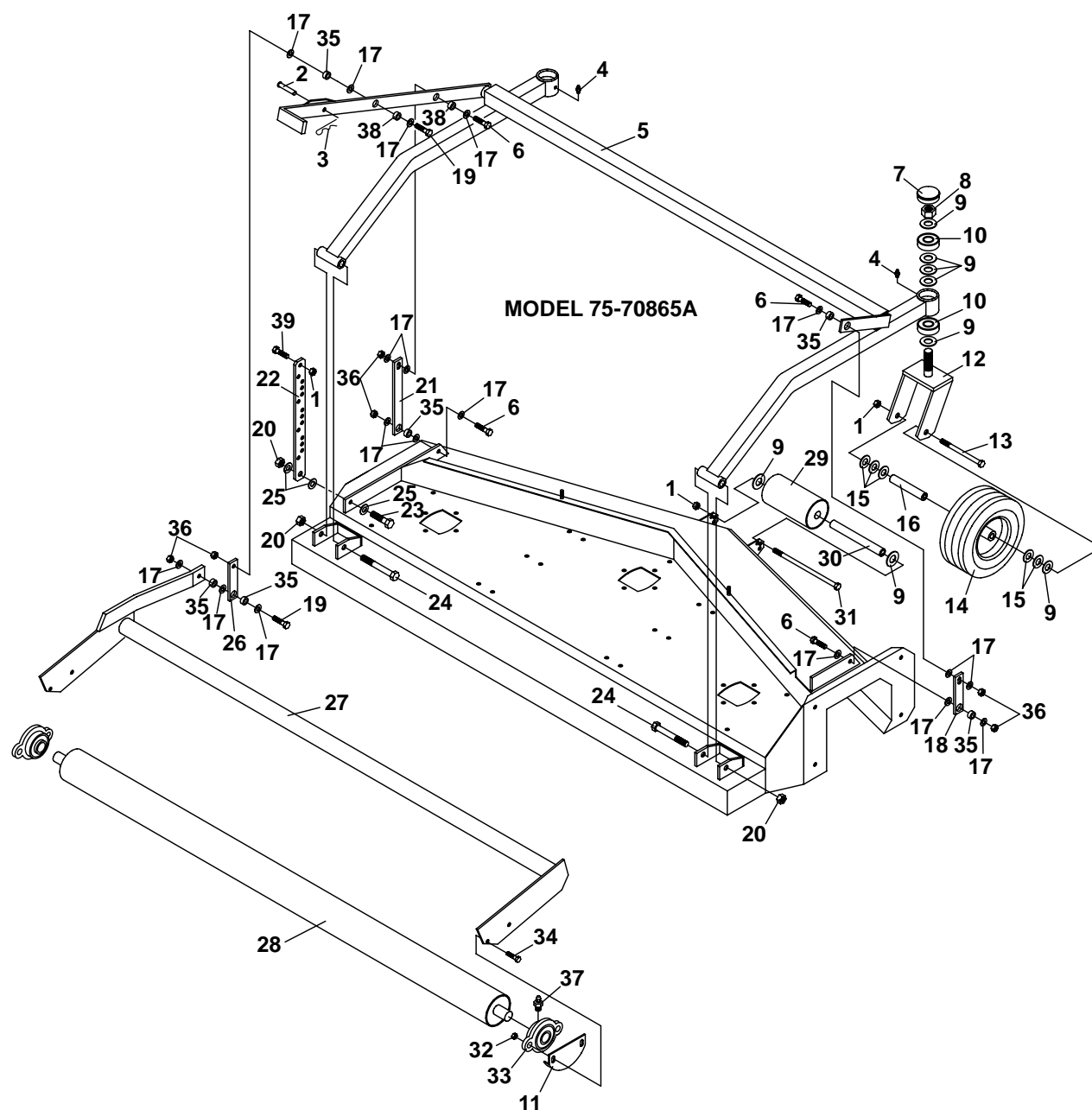
ROTARY MOWER

FRAME PARTS 60"

FIGURE 5

ITEM	PART NO.	DESCRIPTION	QTY	ITEM	PART NO.	DESCRIPTION	QTY
1	64141-4	NUT-WLF 3/8-16	4				
2	03-0610	CLEVIS PIN-3/8 X 1-1/4	1				
3	02-PP0318	PRESTO PIN-3/32 X 2-5/16	1				
4	85010N	GREASE FITTING-1/4	2				
5	62-726.7	FRAME-TUBE	1				
6	99-K73	BLT -FLANGE 3/8-16X1-1/2 NC	4				
7	53-060	HUB CAP-FOR MOWER	2				
8	99-AC12NF	LOCKNUT-CENTER 3/4 NF	2				
9	64163-06	WASHER-.768/.756X1.25X14	14				
10	55-Z9504AB	BALL BEARING-3/4 ID	4				
11	64-845	SHIELD-BEARING	2				
12	4132783.7	CASTER, MOWER	2				
13	641213-93	BOLT-HEX 3/8-16 X 5	2				
14	53-186	WHEEL-10.25 X 3.25	2				
		(SERVICE ITEMS FOR HOOSIER TIRES)					
	55-112	BRG-ROLLER 5/8 ID X 1-3/8	1				
	53-187	RETAINER	2				
		(SERVICE ITEMS FOR OTR TIRES)					
	4169687	BRG-.625X1.375X2.25	1				
	4169688	RETAINER					
15	64163-16	WASHER-41/64X1, 3/8X12GA	10				
16	50-062	AXLE TUBE-CASTER WHL	2				
17	64-799	WASHER-13/32 X 1-9/32	19				
18	42-444.7	LINK-RIGHT	1				
19	64229-03	NUT-NYLON LOCK 3/8-16	6				
20	64229-05	LOCKNUT, 1/2-13 NYLON	3				
21	42-445.7	LINK-LEFT FRONT	1				
22	42-447.7	LINK-HEIGHT ADJUST	1				
23	64123-117	BOLT-HEX 1/2-13X1-1/2	1				
24	90-0832	BOLT-1/2 X 4	2				
25	64163-67	WASHER-.516X1X12GA	3				
26	42-446.7	LINK-MID LIFT	1				
27	62-870.7	FRAME-REAR ROLLER	1				
28	50-079.7	ROLLER-REAR	1				
29	50-105	ROLLER-FRONT	1				
	85-B11	BEARING-3/4" WOOD RLR	2				
30	50-074	AXLE-ANTI SCALP ROLLER	1				
31	64123-219	BOLT-HEX 3/8-16X6	1				
32	64141-6	NUT, 5/16-18	4				
33	55-FB16016	BEARING-160 FLANGE 1"	2				
34	64139-10	BOLT-FLANGE 5/16 X 1-1/4	4				
35	64-663	BUSHING-ADJ LINK THIN	6				
36	64123-67	BOLT-HEX 3/8-16X1-3/4	2				
37	29-045	GREASE FITTING-1/4 45	2				
38	64-662	BUSHING-ADJ LINK THICK	2				
39	64139-21	BLT-WLF 3/8-16X3/4	1				

FIGURE 6



ROTARY MOWER

FRAME PARTS 72"

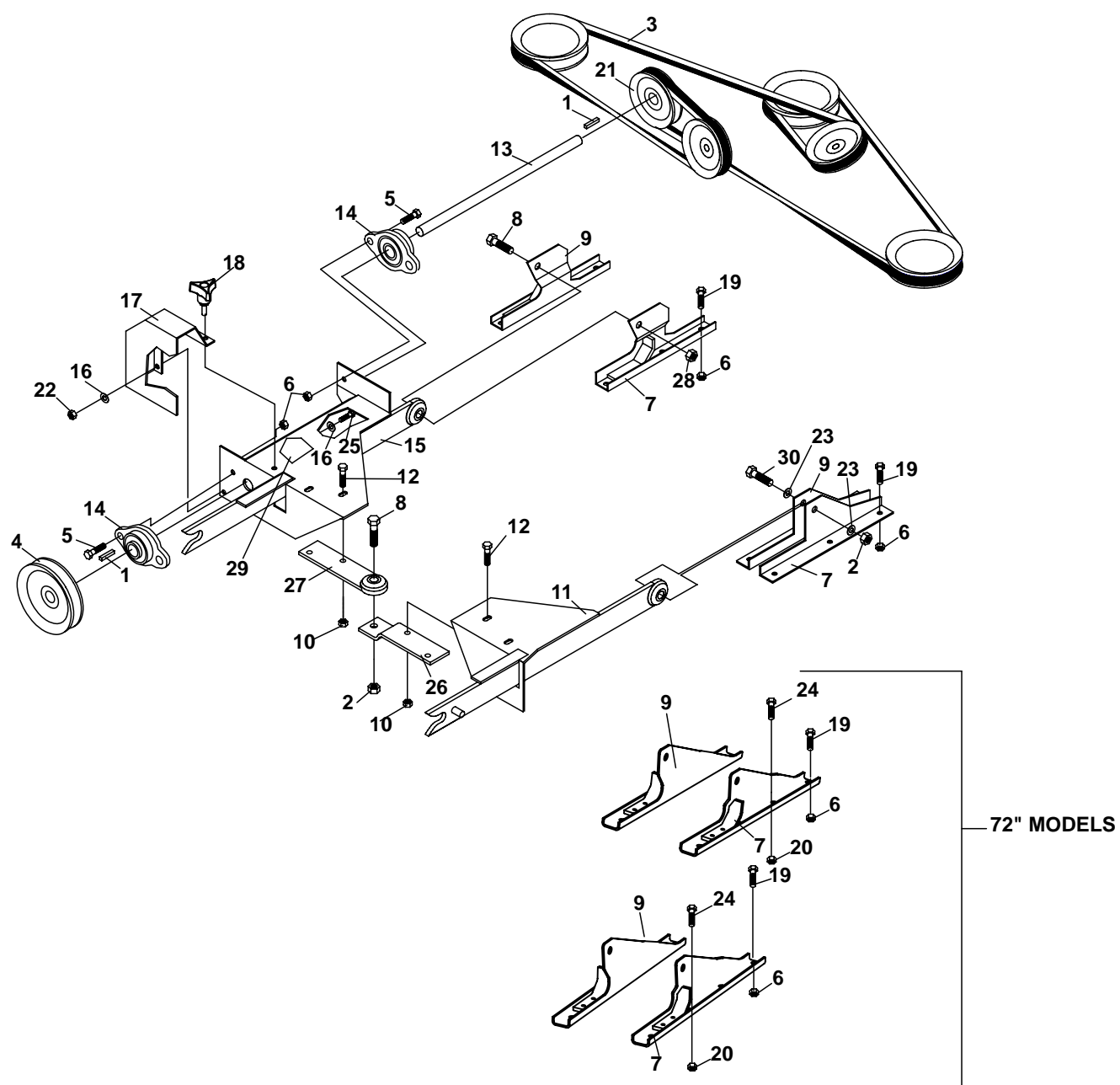
FIGURE 6

ITEM	PART NO.	DESCRIPTION	QTY	ITEM	PART NO.	DESCRIPTION	QTY
1	64141-4	NUT-WLF 3/8-16	5				
2	03-0610	CLEVIS PIN-3/8 X 1-1/4	1				
3	02-PP0318	PRESTO PIN-3/32 X 2-5/16	1				
4	85010N	GREASE FITTING-1/4	2				
5	62-731.7	FRAME-TUBE	1				
6	99-K73	BOLT-HEX 3/8-16X1-1/2	4				
7	53-060	HUB CAP-FOR MOWER	2				
8	99-AC12NF	LOCKNUT-CENTER 3/4 NF	2				
9	64163-06	WASHER-.768/.756X1.25X14	14				
10	55-Z9504AB	BALL BEARING-3/4 ID	4				
11	64-845.7	SHIELD-BEARING	2				
12	4132783.7	CASTER, MOWER	2				
13	64123-93	BLT-HEX 3/8-16X5	2				
14	53-186	WHEEL-10.25 X 3.25	2				
	(SERVICE ITEMS FOR HOOSIER TIRES)						
	55-112	BRG-ROLLER 5/8 ID X 1-3/8	1				
	53-187	RETAINER	2				
	(SERVICE ITEMS FOR OTR TIRES)						
	4169687	BRG-.625X1.375X2.25	1				
	4169688	RETAINER					
15	64163-16	WASHER-41/64X1, 3/8X12GA	10				
16	50-062	AXLE TUBE-CASTER WHL	2				
17	64-799	WASHER-13/32 X 1-9/32	19				
18	42-444.7	LINK-MIDDLE RIGHT	1				
19	64123-67	BOLT-HEX 3/8-16X1-3/4	2				
20	64229-05	LOCKNUT, 1/2-13 NYLON	2				
21	42-449.7	LINK-HEIGHT ADJT FRT LFT	1				
22	42-452.7	LINK-HEIGHT SELECTOR	1				
23	64123-117	BOLT-HEX 1/2-13X1-1/2	1				
24	90-0832	BOLT-1/2 X 4	2				
25	64163-67	WASHER-.516X1X12GA	3				
26	42-451.7	LINK-MID LIFT	1				
27	62-871.7	FRAME-REAR ROLLER	1				
28	50-080.7	ROLLER-REAR	1				
29	50-105	ROLLER-FRONT	1				
	85-B11	BEARING-3/4" WOOD RLR	2				
30	50-074	AXLE-ANTI SCALP ROLLER	1				
31	64123-219	BOLT-HEX 3/8-16X6	1				
32	64141-6	NUT, 5/16-18	4				
33	55-FB16016	BEARING-160 FLANGE 1"	2				
34	64139-10	BOLT-FLANGE 5/16 X 1-1/4	4				
35	64-663	BUSHING-ADJ LINK THIN	6				
36	64229-03	NUT-NYLON LOCK 3/8-16	6				
37	29-045	GREASE FITTING-1/4 45	2				
38	64-662	BUSHING-ADJ LINK THICK	2				
39	64139-21	BLT-WLF 3/8-16X3/4	1				

HITCH & DRIVE PARTS

ROTARY MOWER

FIGURE 7



ROTARY MOWER

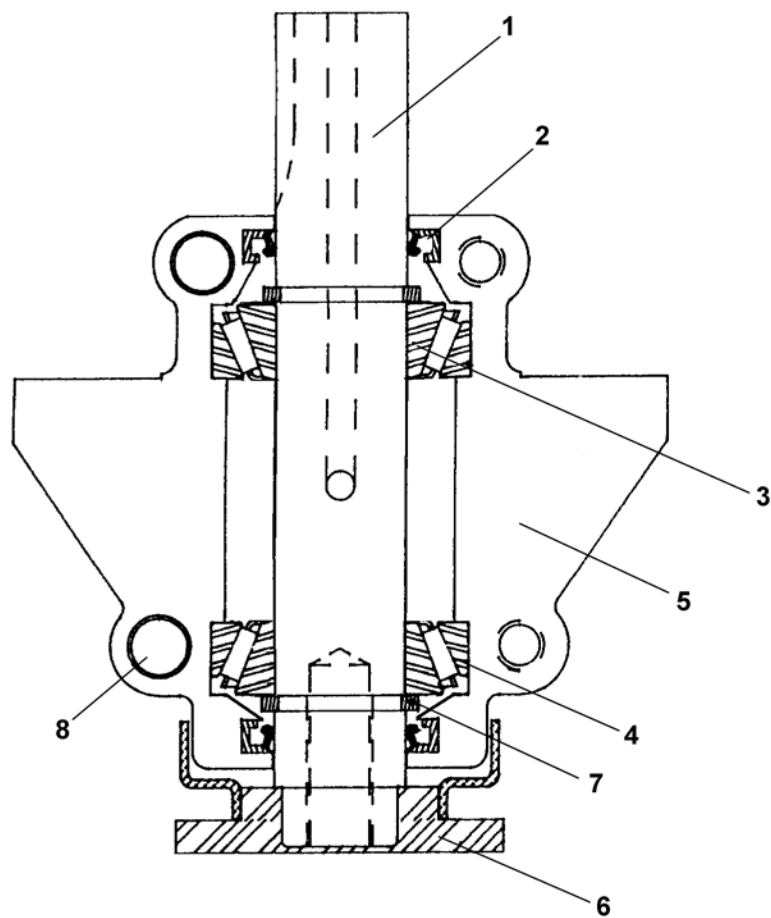
HITCH & DRIVE PARTS

FIGURE 7

ITEM	PART NO.	DESCRIPTION	QTY	ITEM	PART NO.	DESCRIPTION	QTY
1	64164-11	KEY-3/16X3/16X1-1/4 SQ	2	21	83-BK4012	PULLEY-4" 3/4" BORE (USED ON 48" ONLY)	1
2	64229-05	LOCKNUT, 1/2-13 NYLON (ONE ON RIGHT SIDE)	4		83-BK5012	PULLEY-5" 3/4" BORE (USED ON 60" & 72" MODELS ONLY)	1
3	81-A128	BELT-48"	1	22	64229-02	LOCKNUT-NYLON 5/16-18	1
	81-A158	BELT-60"	1	23	64163-67	WASHER-.516X1X12	2
	81-B180	BELT-72"	1	24	64139-18	BLT-WLF 3/8-16X1-1/4 (USED ON 72" DECK ONLY)	2
4	83-BK5012	PULLEY-5" 3/4" BORE	1	25	64123-54	BOLT, 5/16-18X3/4 HEX	1
5	64139-24	BLT-WLF 3/8-16 X 1	4	26	4170583.7	LIFT ARM-TOP LINK	1
6	64141-4	NUT-WLF 3/8-16 (QTY 16 ON 48" & 60" MODELS) (QTY 18 ON 72" MODELS)		27	4170584.7	LIFT ARM-LOWER LINK	1
7	64-934.7	ANCHOR-LIFT ARM RT (USED ON 48")	2	28	64141-13	NUT WLF 1/2-13 (LEFT SIDE)	1
	64-936.7	ANCHOR-LIFT ARM RT (USED ON 60")	2	29	2000557	DECAL -ROTATING PARTS	1
	64-938.7	ANCHOR-LIFT ARM RT (USED ON 72")	2	30	64123-125	BOLT-HEX 1/2-13X2-3/4 (RIGHT SIDE)	1
8	99-K82	BOLT, FLANGE 1/2-13 X 2	2				
9	64-935.7	ANCHOR-LIFT ARM LFT (USED ON 48")	2				
	64-937.7	ANCHOR-LIFT ARM LFT (USED ON 60")	2				
	64-939.7	ANCHOR-LIFT ARM LFT (USED ON 72")	2				
10	64268-05	NUT-FL NY LOCK 1/2-13	4				
11	4170556.7	HITCH ARM-RIGHT	1				
12	64139-22	BLT-WLF 1/2-13 X 1	4				
13	80-237	SHAFT-MOWER DRIVE	1				
14	55-FB23012	BRG-2-BOLT FLANGE 3/4	2				
15	4170558	HITCH ARM-LEFT INCLUDES ITEM 29	1				
16	64163-04	WSHR 25/64X5/8X16GA	2				
17	64-611.7	SHIELD-DRIVE PULLEY	1				
18	4170936	KNOB-3 PRONG 1/4-20	1				
19	64139-21	BLT-WLF 3/8-16X3/4 (QTY 12 ON 48" & 60" DECKS) (QTY 14 ON 72" DECK ONLY)					
20	64229-03	NUT-NYLON LOCK 3/8-16 (USED ON 72" DECK ONLY)	2				

* NOT ILLUSTRATED

FIGURE 8



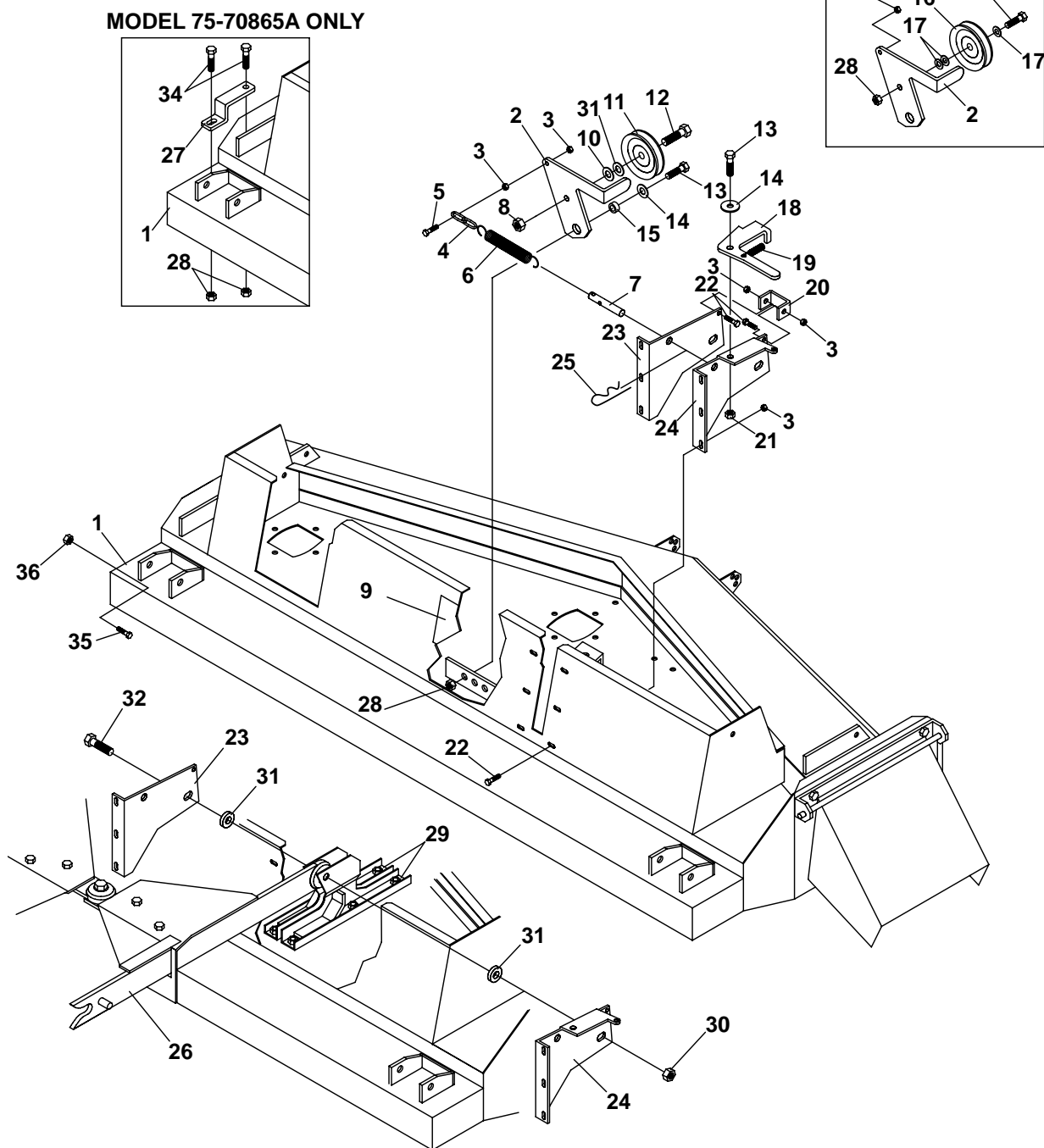
ROTARY MOWER

SPINDLE PARTS

FIGURE 8

ITEM	PART NO.	DESCRIPTION	QTY	ITEM	PART NO.	DESCRIPTION	QTY
1	87-235	SHAFT-SPINDLE	1				
2	87-209843	SEAL	2				
3	87-244643	BEARING CONE	2				
4	87-244610	BEARING CUP	2				
5	87-240001-5	CASTING-W/O BRTHR HLE	1				
	87-240001-6	CASTING-W/BRTHR HLE	1				
6	87-240101-01	BLADE ADAPTER W/CUP	1				
7	87-203293	RETAINING RING	2				
8	87-203815	BOLT-3/8 X 1-1/2 SHCS	4				

3 16 33



ROTARY MOWER

FLIP-UP DECKS

FIGURE 9

ITEM	PART NO.	DESCRIPTION	QTY	ITEM	PART NO.	DESCRIPTION	QTY
1	REF	MAIN DECK WELDMENT	1	27	64-998.7	HOLD DOWN-RLR FRAME (USED ON 72")	1
2	40-329.7	IDLER ARM-(48" & 60")	1				
	40-330.7	IDLER ARM-(72")	1	28	64141-4	NUT-WLF 3/8-16 (QTY 1 ON 48" AND 60") (QTY 4 ON 72")	
3	64141-2	NUT-WLF 1/4-20	10				
4	6107645	CHAIN, IDLER ARM STOP (USED ON 60" & 72" DECKS)	1	29	64-935.7	ANCHOR-LIFT ARM LFT	2
	56-055-02	CHAIN #2 STRAIGHT LINK 2IN (USED ON 48" DECKS)			64-934.7	ANCHOR-LIFT ARM RT (USED ON 48")	2
5	64123-80	BLT-HEX 1/4-20X1-1/4	1		64-937.7	ANCHOR-LIFT ARM LFT	2
6	41-092	SPRING-(60")	1		64-936.7	ANCHOR-LIFT ARM RT (USED ON 60")	2
	41-052	SPRING-(48")	1		64-939.7	ANCHOR-LIFT ARM LFT	2
	41-051	SPRING-(72")	1		64-938.7	ANCHOR-LIFT ARM RT (USED ON 72")	2
7	64-966	PIVOT STOP PIN	1	30	64229-05	LOCKNUT, 1/2-13	1
8	64141-13	NUT WLF 1/2-13	1	31	64163-67	WASHER-.516X1X12	3
9	00-093	DECAL-WARNING	1	32	64123-125	BOLT-HEX 1/2-13X2-3/4	1
10	99-B12	SPACER-.53 X 1.13 X 3GA	1				
11	83-012	IDLER-"V" 1/2" ID X 4-1/2" OD	1				
12	64123-235	BOLT-HEX 1/2-13 X 1-3/4	1				
13	64123-50	BOLT-HEX 3/8-16X1	2				
14	64-799	WASHER-13/32IDX1-9/32OD	2				
15	85-B29	BUSHING-.406X.740X.258	1				
16	83-034	IDLER-"V" 3/8" ID X 5" OD (USED ON 72" ONLY)	1				
17	64163-61	WSHR .81X.406X16GA (USED ON 72" ONLY)	3				
18	64-967.7	FLIP-UP LATCH	1				
19	41-013	SPRING-EXT. 0.50 X 1.938	1				
20	64-965.7	FRONT LIFT ARM STOP	1				
21	64229-03	LOCKNUT-NYLON 3/8-16	1				
22	64139-04	BOLT-WLF 1/4-20X3/4	8				
23	64-968.7	FLIP-UP DECK BRACE-LFT (USED ON 60" & 72" ONLY)	1				
	64-970.7	FLIP-UP DECK BRACE-LFT (USED ON 48" ONLY)	1				
24	64-969.7	FLIP-UP DECK BRACE-RT (USED ON 60" & 72" ONLY)	1				
	64-971.7	FLIP-UP DECK BRACE-RT (USED ON 48" ONLY)	1				
25	64168-1	COTTER-HAIRPIN.120X2-3/8	1				
26	62-858.7	ARM, RIGHT HITCH	1				

ITEMS 33-36 USED ON 72" DECK ONLY

33	64123-87	BOLT-HEX 3/8-16X1-3/4	1
34	64139-21	BLT-WLF 3/8-16X3/4	2
35	64018-15	BLT-CRG 5/16-18 X1	1
36	64141-6	NUT-WLF 5/16-18	1

***NOT ILLUSTRATED**

SCHILLER GROUNDS CARE, INC.
ONE BOB-CAT LANE
P.O. BOX 469
JOHNSON CREEK, WI 53038
920-699-2000
www.schillergc.com



©Schiller Grounds Care, Inc. 2010