



One BOB-CAT Lane, P.O. Box 469  
Johnson Creek, WI 53038 U.S.A.  
(920) 699 2000  
Fax: (920) 699 6836

## **Service Bulletin**

### **440 Cab updates**

**Date:** March 6, 2015

**Bulletin No:** JC-15-05

**Product Type:** STEINER 440 CABS

#### **Customer Issue:**

- A. Soft seal cracks and breaks.
- B. Mounting brackets break and the cab can wiggle on the mounts causing damage.
- C. Cannot remove the tractor floor plate without removing the cab.

#### **Cause:**

- A. Material of the soft seal doesn't hold up to cold temperatures.
- B. Cab mounts are not rigid enough.
- C. Cab covers the floor plate.

#### **Action required:**

- A. Order Kit # **970537**-New soft seal kit. (Copy of instructions attached)  
Remove old seal and replace with new seal.  
Note: The stretch cord mounts a different way in the new kit.

B.&C Order kit # **970538**-New mounting bracket kit. (Copy of instructions attached)  
This allows you to remove the foot plate, without removing the cab.

#### **Products Involved:**

**All 440 cabs with model 75-71215 and serial range 2777600001 - 27776000111**

**NOTE:** New cabs with these updates installed, will have a new model number 75-71215A and the serial numbers will start @ 27776000112.

#### **Warranty: FIX AS FAIL**

Regular warranty procedures apply:

- A. Flat rate is set @ 2 hours of labor for installation of kit 970537.
- B. Flat rate is set @ 4.5 hours of labor for installation of kit 970538.

Please file warranty using (drop-down box) labor code **JC-15-05A** for kit 970537 and labor code **JC-15-05B** for kit 970538 with one unit per claim.

If you have any questions, please contact our Customer Service Department at 920-699-2000. This bulletin is relevant to the departments checked below. Please circulate as appropriate.

SERVICE

☒

WARRANTY

☒

SALES

☒

PARTS

☐

**Cab Update kit Installation Instructions for  
Schiller Grounds Care, Steiner 440 Series Cabs**



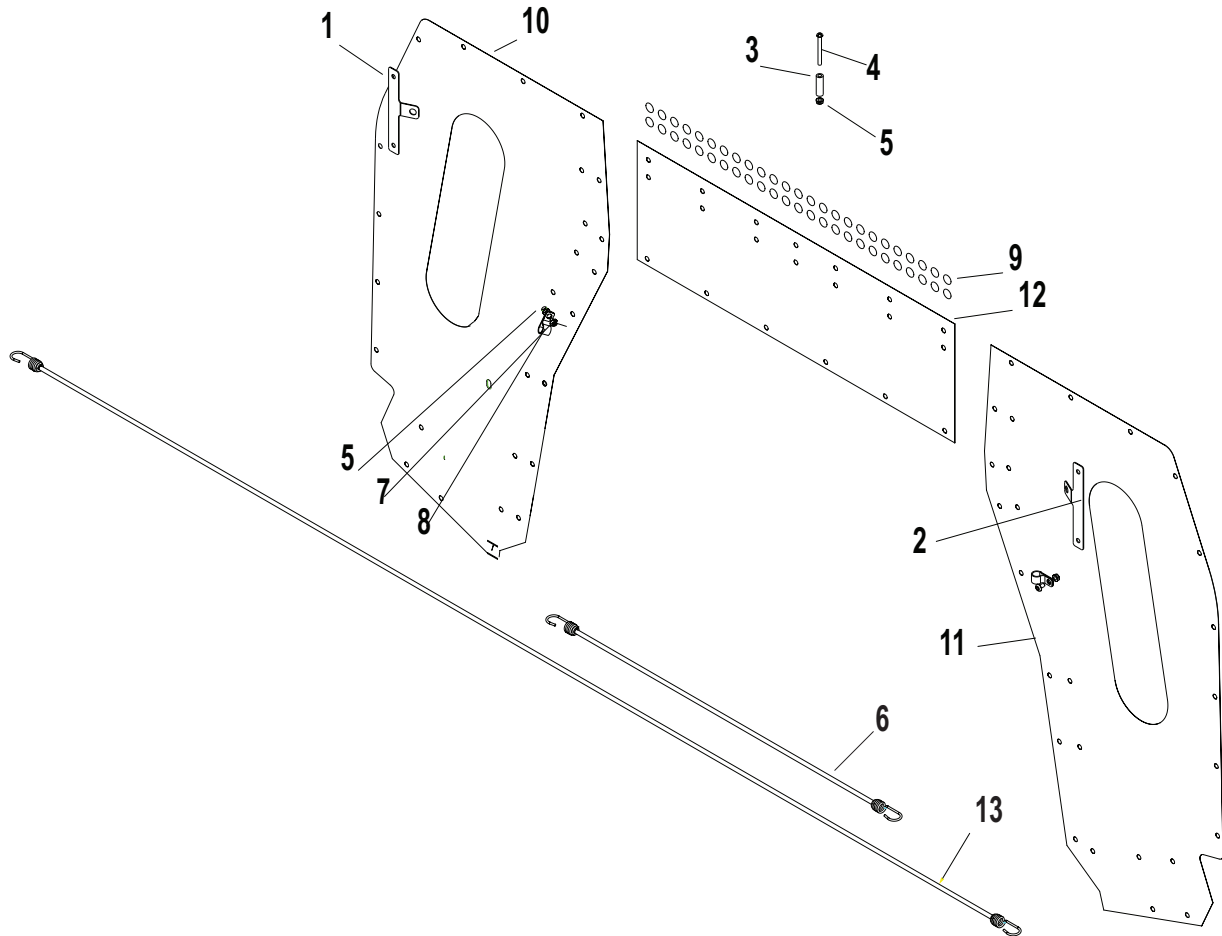
# **970537**

## **CAB FRONT SOFT SEAL UPDATE KIT**

## Cab Update kit Installation Instructions for Schiller Grounds Care, Steiner 440 Series Cabs

Read these instructions and identify all components. Please retain these instructions for future reference and parts ordering information. Refer to kit components and figure 1 for general layout.

### Kit Components:



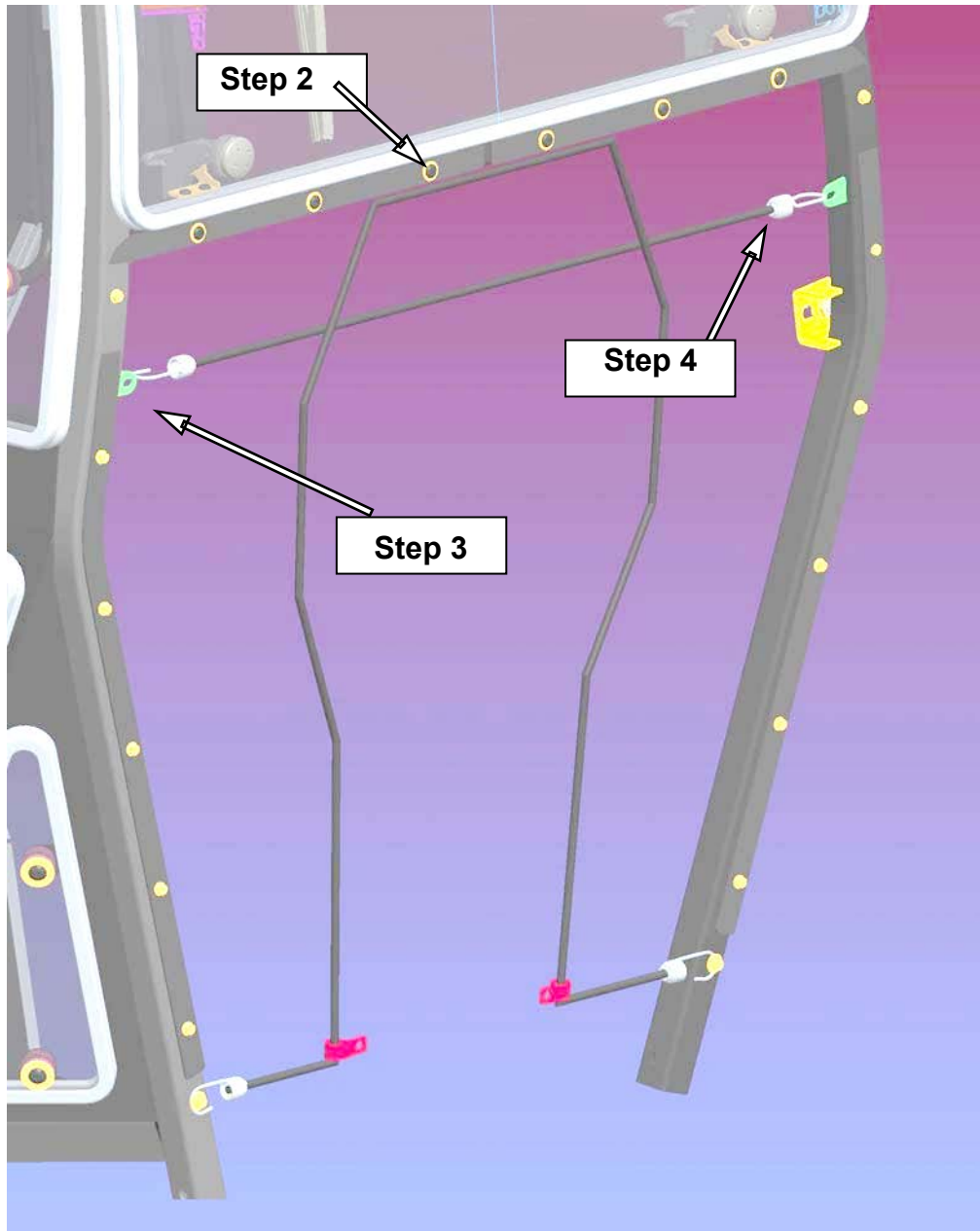
KIT PARTS LIST			
ITEM	PART NO.	DESCRIPTION	QTY
1	4171878-1	BRCKT-BUNGEE CORD RH 7.25	1
2	4171878-2	BRCKT-BUNGEE CORD LH 7.25	1
3	4171878-5	SPACER-BUNGEE CORD GUIDE	1
4	4171878-17	SCREW-MACH .25-20 C 2.50	1
5	4171878-21	NUT-HEX, .25-20	3
6	4171878-15	ASSY-BUNGEE CORD 30"	1
7	4171878-8	CLAMP-.62 CLOSED	2
8	4171878-24	SCREW-MACH .25-20 X .50	2
9	4171015-45	PLUG-RATCHET	50
10	4171878-10	ASSY-LOWER VINYL, RH	1
11	4171878-11	ASSY-LOWER VINYL, LH	1
12	4171878-12	PANEL-LOWER FRONT	1
13	4171878-14	ASSY-BUNGEE CORD 96"	1

## Cab Update kit Installation Instructions for Schiller Grounds Care, Steiner 440 Series Cabs

### Lower front filler panel installation;

1. Remove the existing lower front panels. Save the hardware, “P” clamps and trim strips.
2. Install the new panels. Install the upper cross panel against the cab cross member followed by the side-panels and trim strips. Install (6) screws into the cross member. **(Figure 1)**
3. Place the left and right bungee cord brackets under the side panels and against the front cab tubes. The brackets are installed with the tab angled into the cab. Reinstall the screws into the cab tubes.

**(Figure 1)**

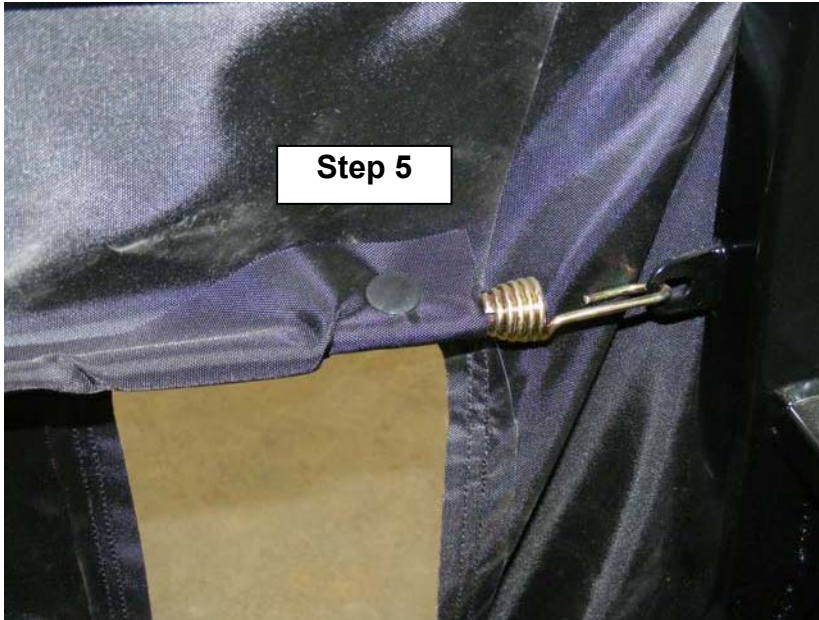


**Figure 1**

4. Install the short bungee cord onto the (2) bungee bracket tabs. **(Figure 1).**

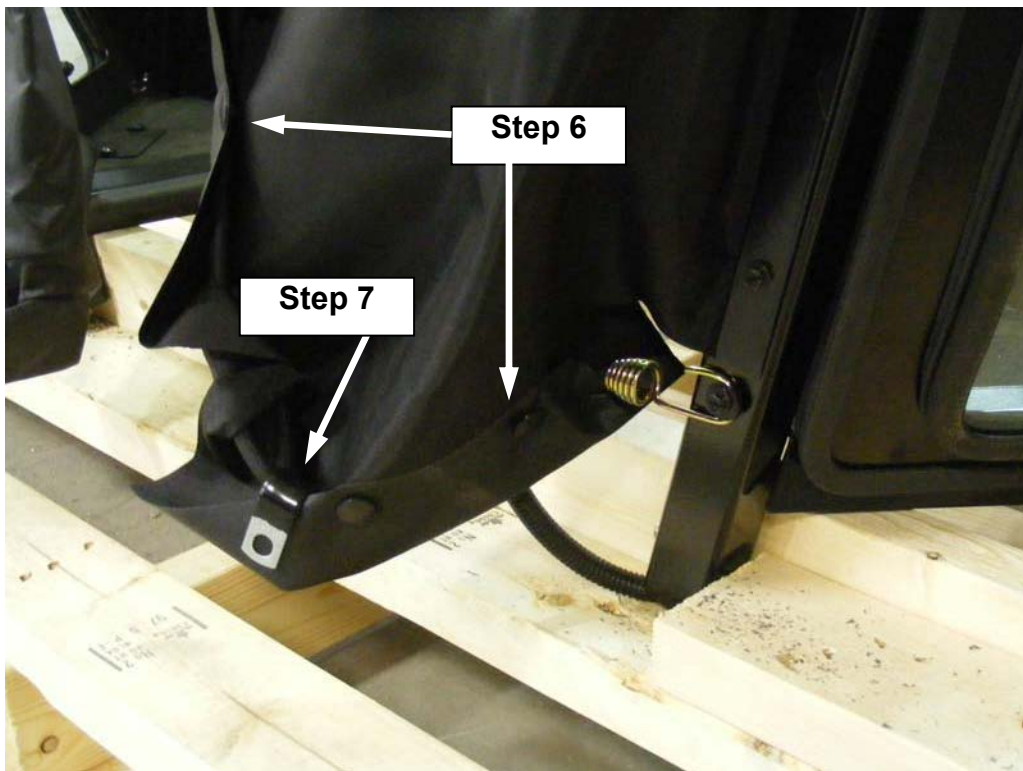
## **Cab Update kit Installation Instructions for Schiller Grounds Care, Steiner 440 Series Cabs**

5. Wrap the upper cross panel around the short bungee cord and use locking ratchet plugs to secure. **(Figure 2)**



**Figure 2**

6. Wrap the lower front panels around the long bungee cord and secure with locking ratchet plugs. Attach the bungee cord hook to the bottom screw on the cab frame. **(Figure 1 & 3)**



**Figure 3**

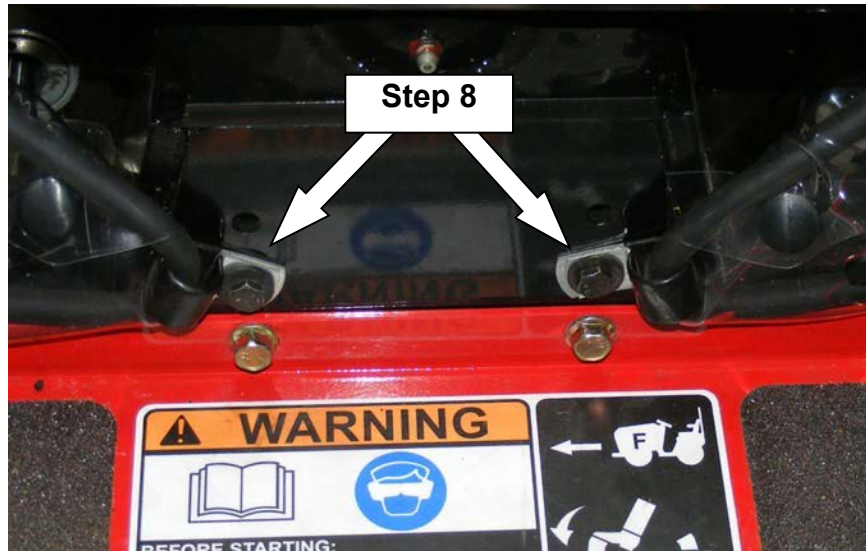
7. Attach the (2) "P" clamps removed from the existing lower front on to the new bungee cord. **(Figure 3)**



## Cab Update kit Installation Instructions for Schiller Grounds Care, Steiner 440 Series Cabs

8. Secure the two "P" clamps on the bungee cord to the machine, near foot panel using existing hardware. **(Figure 4)**;

(2) 1/4" X .75" long, bolts  
(2) 1/4" flanged nuts

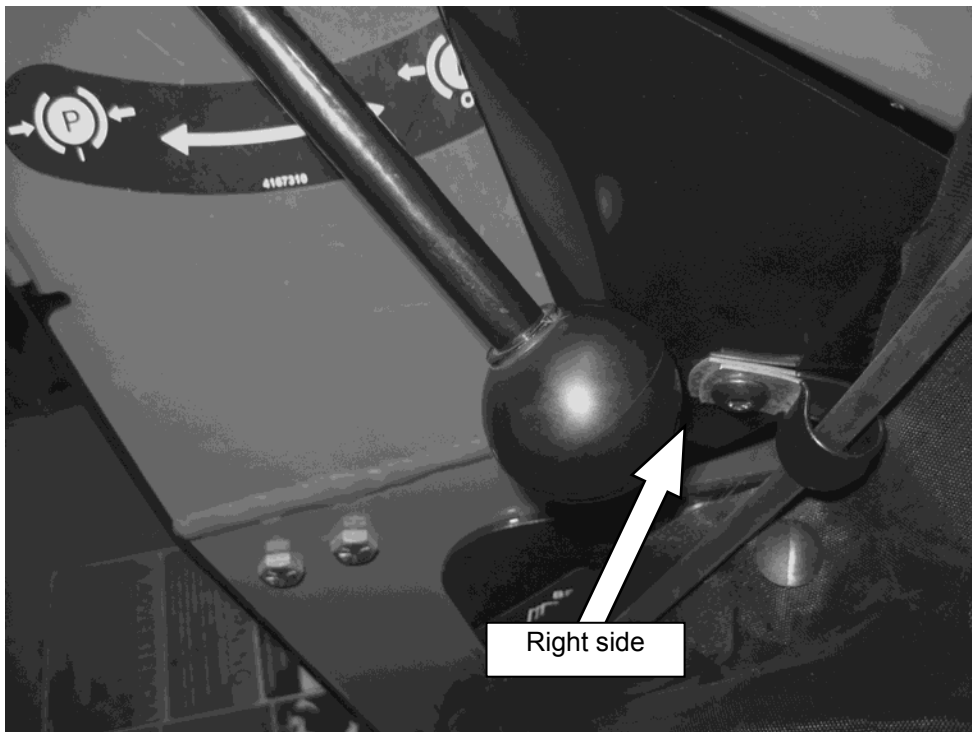


**Figure 4**

9. Install (2) "P" clamps to retain the bungee cord to the side of the hood using:

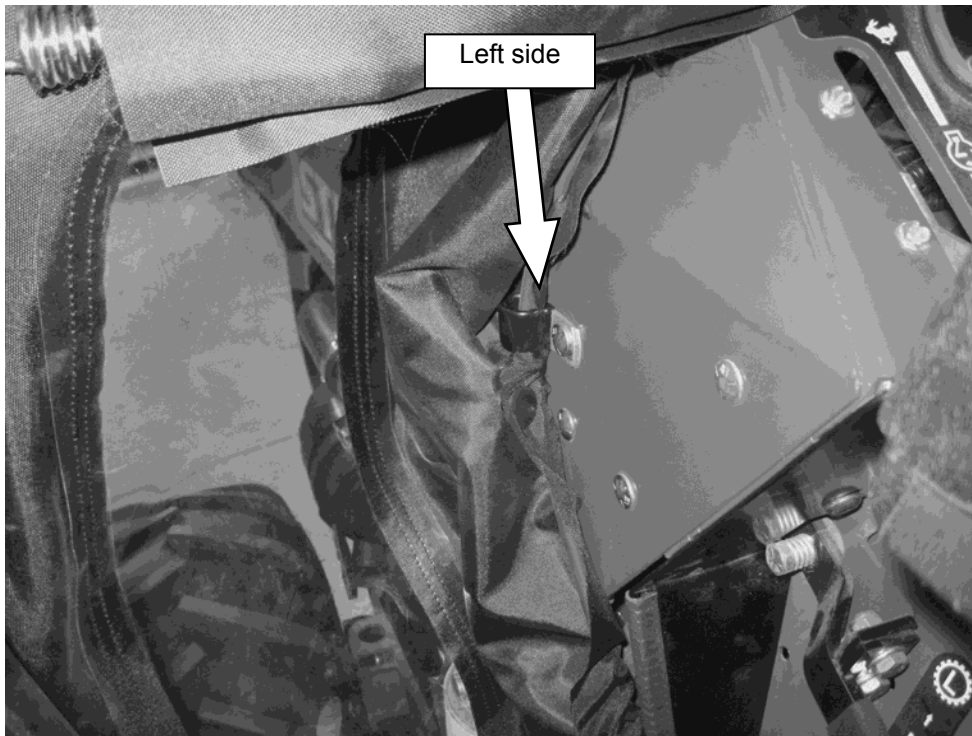
(2) 1/4" X .50" long, bolts  
(2) 1/4" flanged nuts

The left side can use the existing hardware if you choose. **(Figure 5 & 6)**



**Figure 5**

## Cab Update kit Installation Instructions for Schiller Grounds Care, Steiner 440 Series Cabs

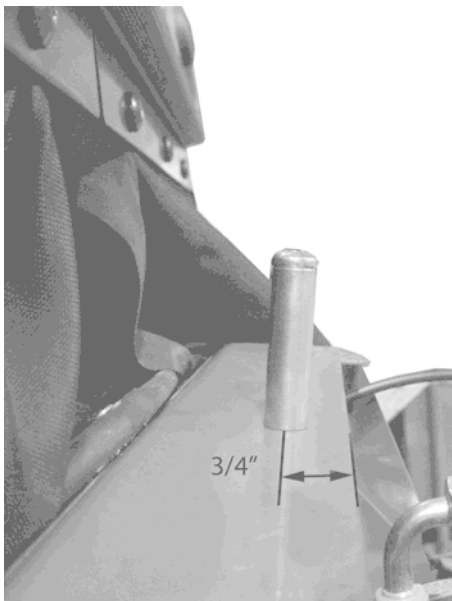


**Figure 6**

10. Install the bungee cord guide onto the hood cowl using **(Figure 7 & 8)**

- (1) 1/4" x 2.50" bolt
- (1) 1/4" flanged nut

Drill a 5/16" hole at the location shown. Both bungee cords should be routed in front of this guide.



**Figure 7**



**Figure 8**

Cab update installation is now complete.

**Cab Update kit Installation Instructions for  
Schiller Grounds Care, Steiner 440 Series Cabs**



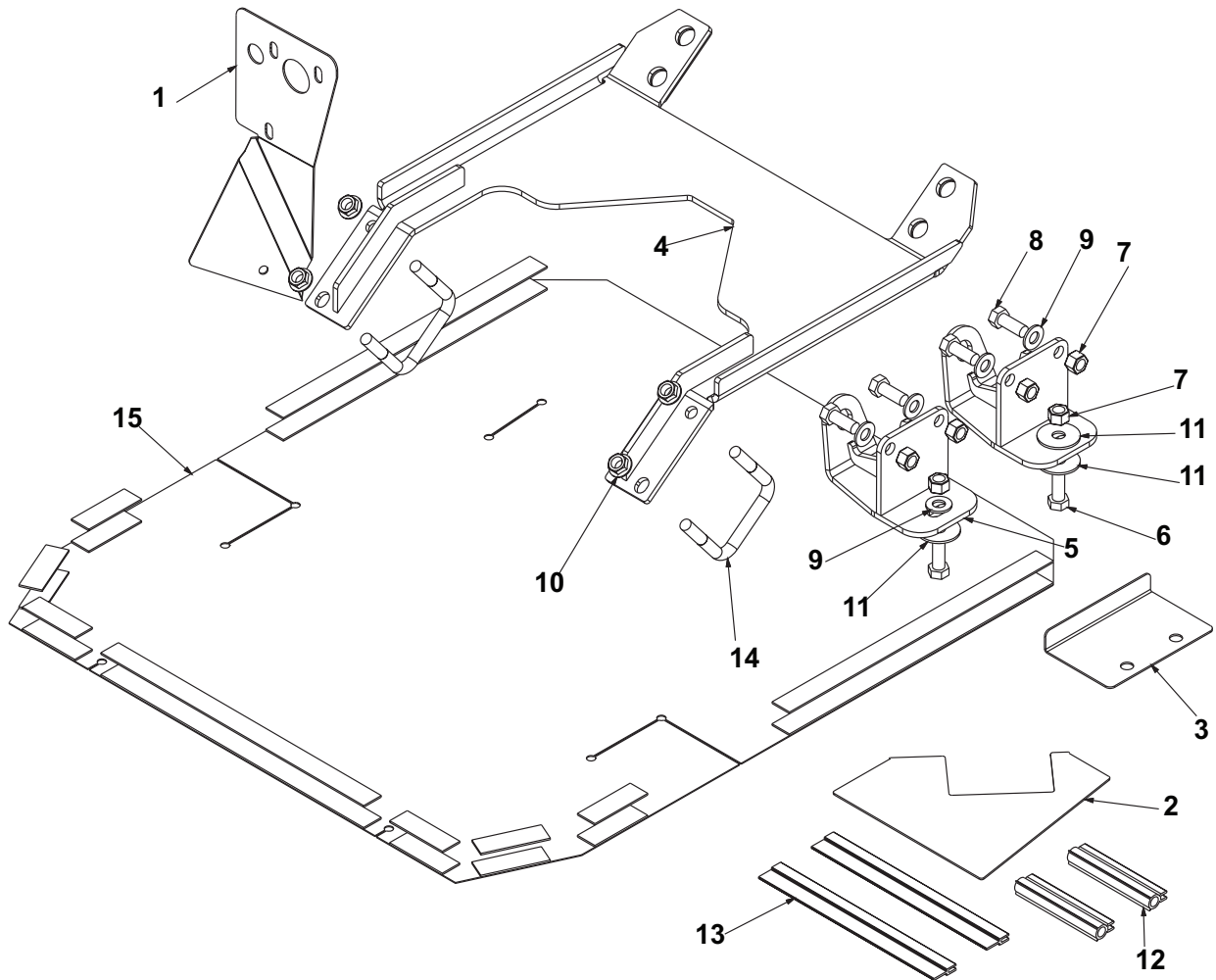
**970538  
CAB MOUNT  
UPDATE KIT**



## Cab Update kit Installation Instructions for Schiller Grounds Care, Steiner 440 Series Cabs

Read these instructions and identify all components. Please retain these instructions for future reference and parts ordering information. Refer to kit components and figure below for general layout.

### Kit Components:



#### KIT PARTS LIST

ITEM	PART NO.	DESCRIPTION	QTY
1	4171015-6	COVER-PANEL, RIGHT	1
2	4171878-3	TEMPLATE, FOOT PANEL	1
3	4171878-4	TEMPLATE, FRONT MOUNTS	1
4	4171878-6	WLDMT-REAR MOUNT	1
5	4171878-7	WLDNT-MOUNT BRACKET	2
6	4171878-16	HHCS-.50-13 NC X 1.50 GR 5	2
7	4171878-18	NUT-HEX NYLOC .50-13	6
8	4171878-19	HHCS .50-13 X 1.25 GR5	4
9	4171878-20	WASHER-FLAT .50 SER	5
10	4171878-22	NUT-HEX .50-13 FLG	4
11	4171878-23	WASHER-FLAT .50	3
12	4171015-34	TRIM SEAL 5" REAR EDGE	2
13	4171878-9	TRIM SEAL 10"	2
14	4171878-25	U-BOLT, 3.50 X 3.75 X 1/2	2
15	4171878-13	ASSY-UNDER SEAT FILLER	1

## Cab Update kit Installation Instructions for Schiller Grounds Care, Steiner 440 Series Cabs

### Machine Preparation;

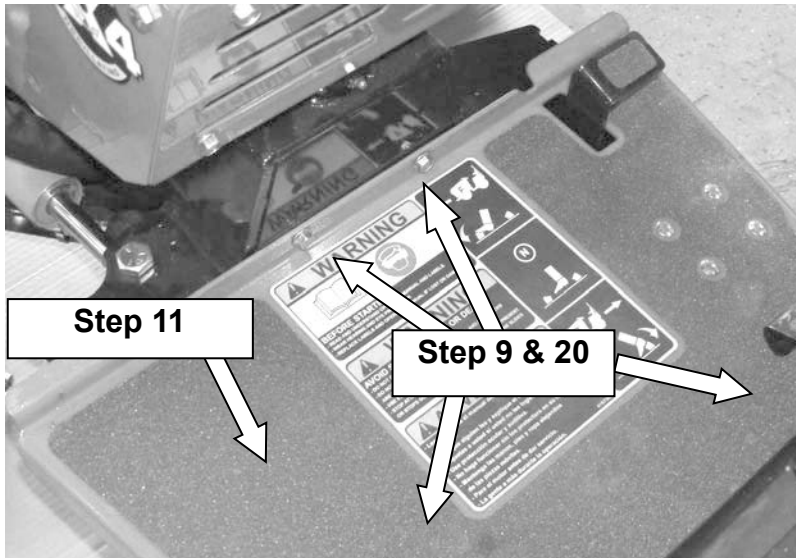
1. Remove all attachments if present
2. Disconnect power from battery.
3. Flip the seat forward and lower the ROPS upper hoop.
4. Remove the existing under seat filler.

### Removing the existing cab mounts;

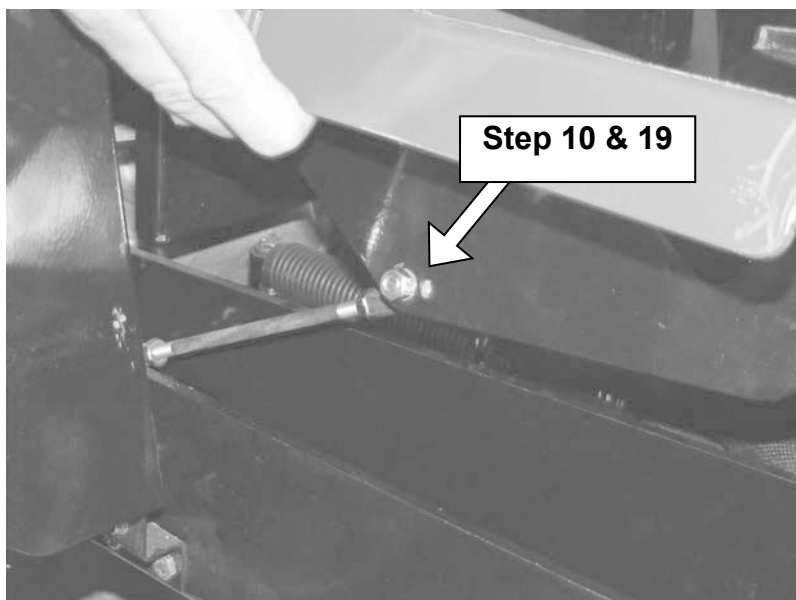
5. Using a spreader bar or lifting strap and overhead crane or forklift, support the cab to allow the existing front and rear mounts to be removed.
6. Remove and save the bolts on the lower front cab mounts. Remove and save the rubber isolation mounts from the existing front mount. Remove the existing front mount from the machine.
7. Remove and save the mounting bolts on the rear of the cab. Remove the left and right rear mounts from the machine. Remove and save the rubber isolation mounts.

### Front mount installation;

8. Raise the cab far enough to allow access to the machines foot panel.
9. Remove (4) bolts securing foot panel on tractor (**Figure 1**).
10. Lift the foot panel up a few inches and remove (1) nut and lock washer from the foot pedal (**Figure 2**).



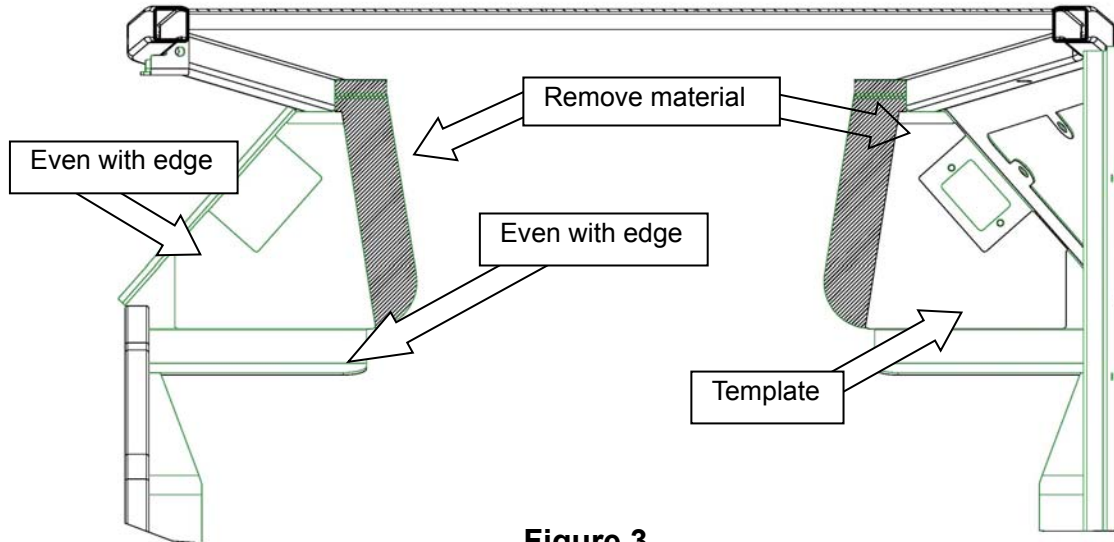
**Figure 1**



**Figure 2**

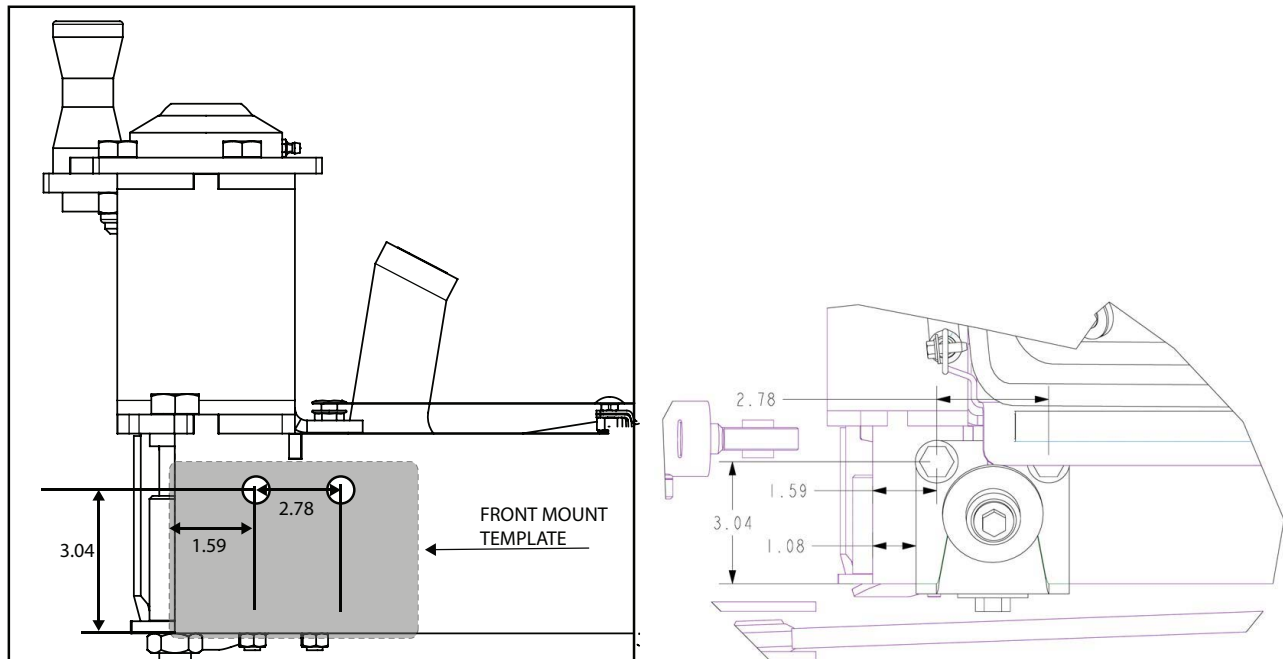
## Cab Update kit Installation Instructions for Schiller Grounds Care, Steiner 440 Series Cabs

11. Completely remove the foot panel from the machine (**Figure 1**).
12. Use the foot panel template (**Item 2**) to trim the lower foot panels on the cab. This will allow removal of the machine foot plate without removing the cab (**Figure 3**).



**Figure 3**

13. Install 10" long clip-on rubber seal (**Item 13**) to the foot panels.
14. Replace the 5" long clip on seal on the lower rear panel with the new 5" long clip on seal.
15. If there are no holes in the side of the frame from the factory, on each side drill (2) .531 holes per (**Figures 4**). Use the template, front mount, to locate (**Item 3**). Place template even with the front edge of frame.



DRILL (2)  $\varnothing$ .531 HOLES  
AT LOCATIONS SHOWN  
TYP BOTH LH AND RH SIDES

**Figure 4**

## Cab Update kit Installation Instructions for Schiller Grounds Care, Steiner 440 Series Cabs

16. Secure the (2) new front mount brackets to the bottom and sides of the machine. **(Figures 4 & 5)**

17. Use the following hardware to secure the brackets to the bottom of the machine. Use the existing hole in the frame.

**Torque bolts or nuts: Important! Using a torque wrench, torque all mounting hardware to the following torque specifications:**

- **3/8" hardware to 30 FT-LB (41 N-M)**

- **1/2" hardware to 70 FT-LB (95 N-M)**

(2) 1/2" X 1.50" long, bolts **(Item 6)**

(2) 1/2" nylock nuts **(Item 7)**

(1) 1/2" small OD flat washer **(Item 19)** – on inside left side.

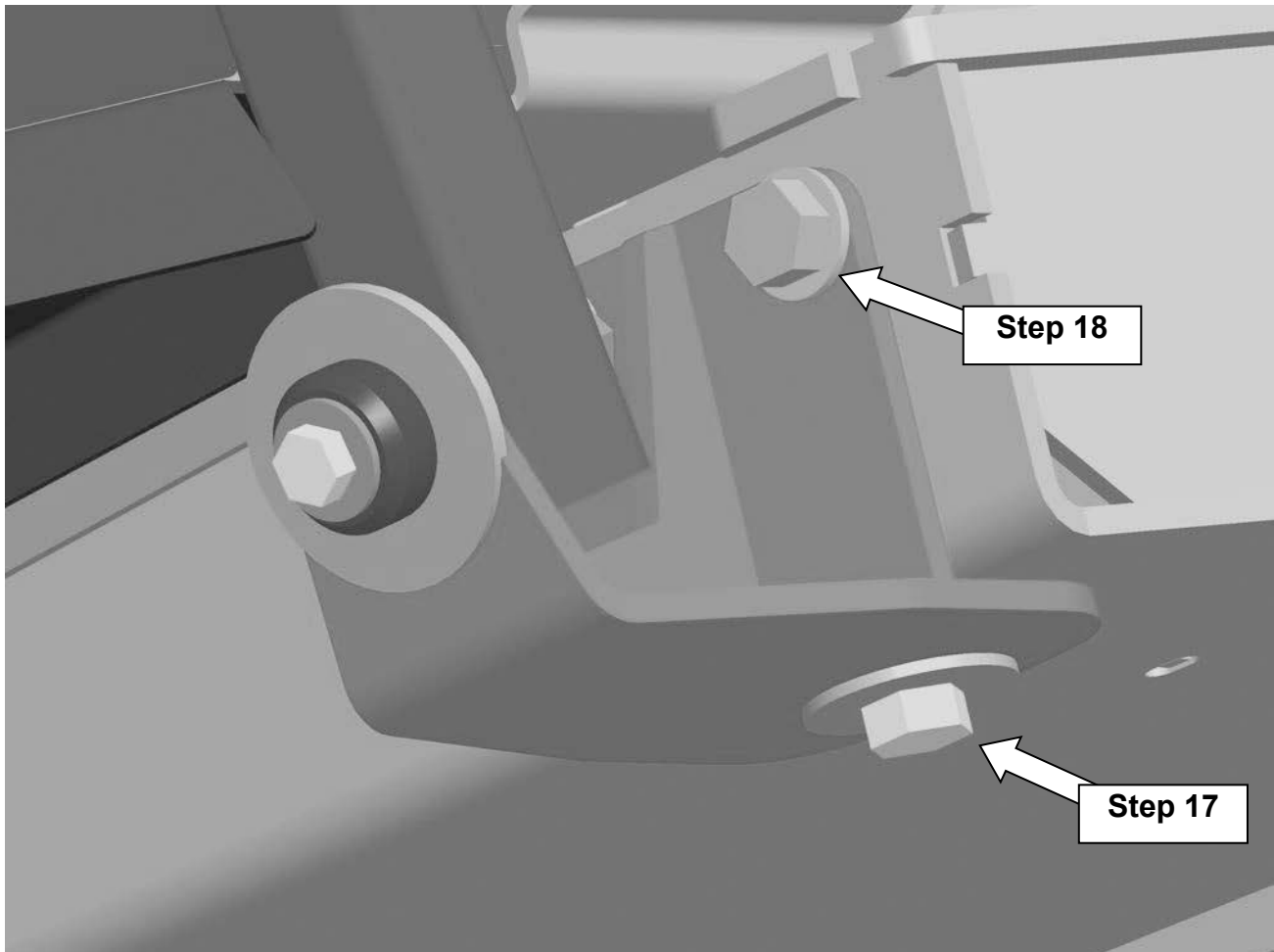
(3) 1/2" large OD flat washers **(Item 11)**- two on right side, one on left side

18. Use the following hardware to secure the brackets to the side of the machine.

(4) 1/2" X 1.25" long, bolts **(Item 8)**

(4) 1/2" nylock nuts **(Item 7)**

(4) 1/2" small OD flat washers **(Item 9)**



**Figure 5**

19. Re-secure the hardware for the foot pedal **(Figure 2)**.

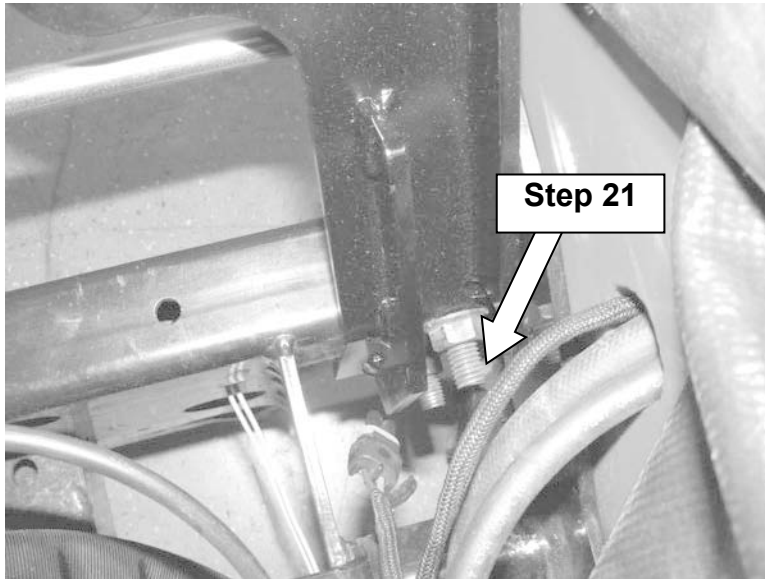
20. Re-secure the foot panel re-using hardware **(Figure 1)**.

**Cab Update kit Installation Instructions for  
Schiller Grounds Care, Steiner 440 Series Cabs**

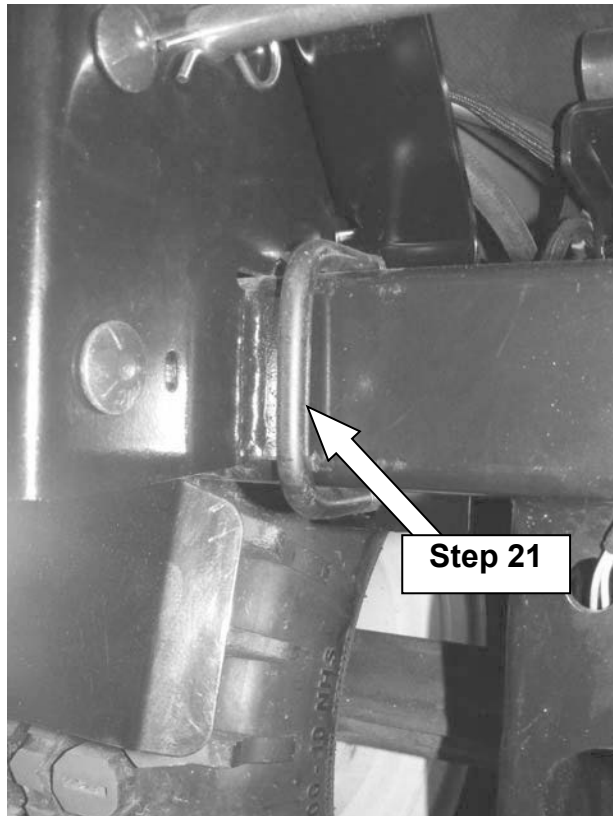
**Rear mount installation;**

21. Loosely secure the new rear mounting bracket (Item 4) to the machine using (Figures 6 & 7);  
(2) 1/2" U-bolts (Item 14)  
(4) 1/2" serrated flange nuts (Item 10)

**DO NOT TIGHTEN AT THIS TIME**



**Figure 6**



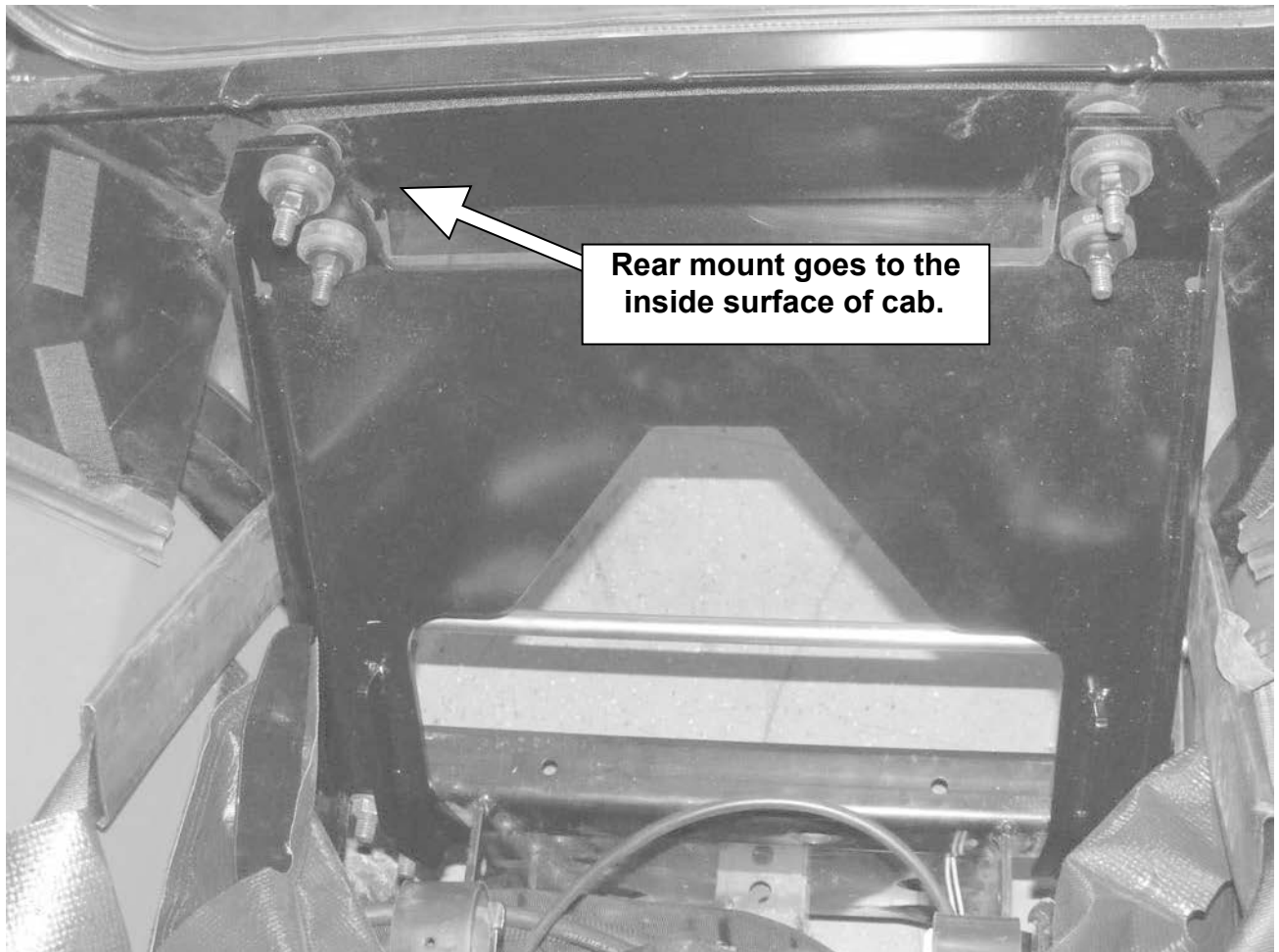
**Figure 7**



## **Cab Update kit Installation Instructions for Schiller Grounds Care, Steiner 440 Series Cabs**

### **Installing the cab;**

22. Lower the cab onto the tractor and align the front mount holes of the cab tubes with the holes on the front mount brackets. The rear mount may need to be tilted forward as you lower the cab to allow it to pass to the inside of the rear cab wall. **(Figure 8 - 9).**



**Figure 8**

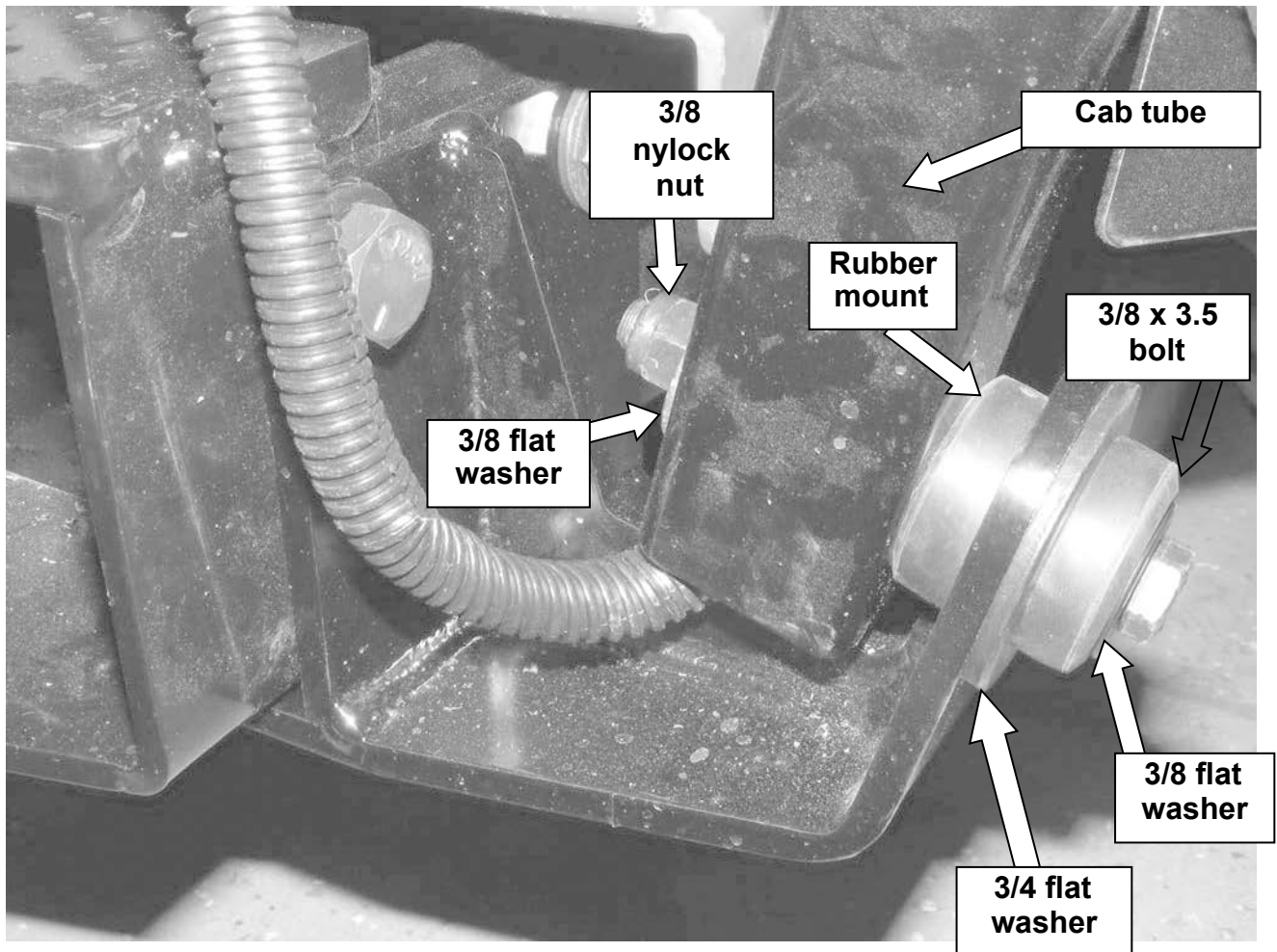
## Cab Update kit Installation Instructions for Schiller Grounds Care, Steiner 440 Series Cabs

**Torque bolts or nuts: Important! Using a torque wrench, torque all mounting hardware to the following torque specifications:**

- **3/8" hardware to 30 FT-LB (41 N-M)**
- **1/2" hardware to 70 FT-LB (95 N-M)**

23. Secure the front of the cab using the hardware removed earlier. **(Figure 9)**

- (2) rubber isolators
- (2) 3/4" flat washers
- (2) 3/8" x 3.50" long, bolts
- (2) 3/8" nylock nuts
- (4) 3/8" flat washers



**Figure 9**

## **Cab Update kit Installation Instructions for Schiller Grounds Care, Steiner 440 Series Cabs**

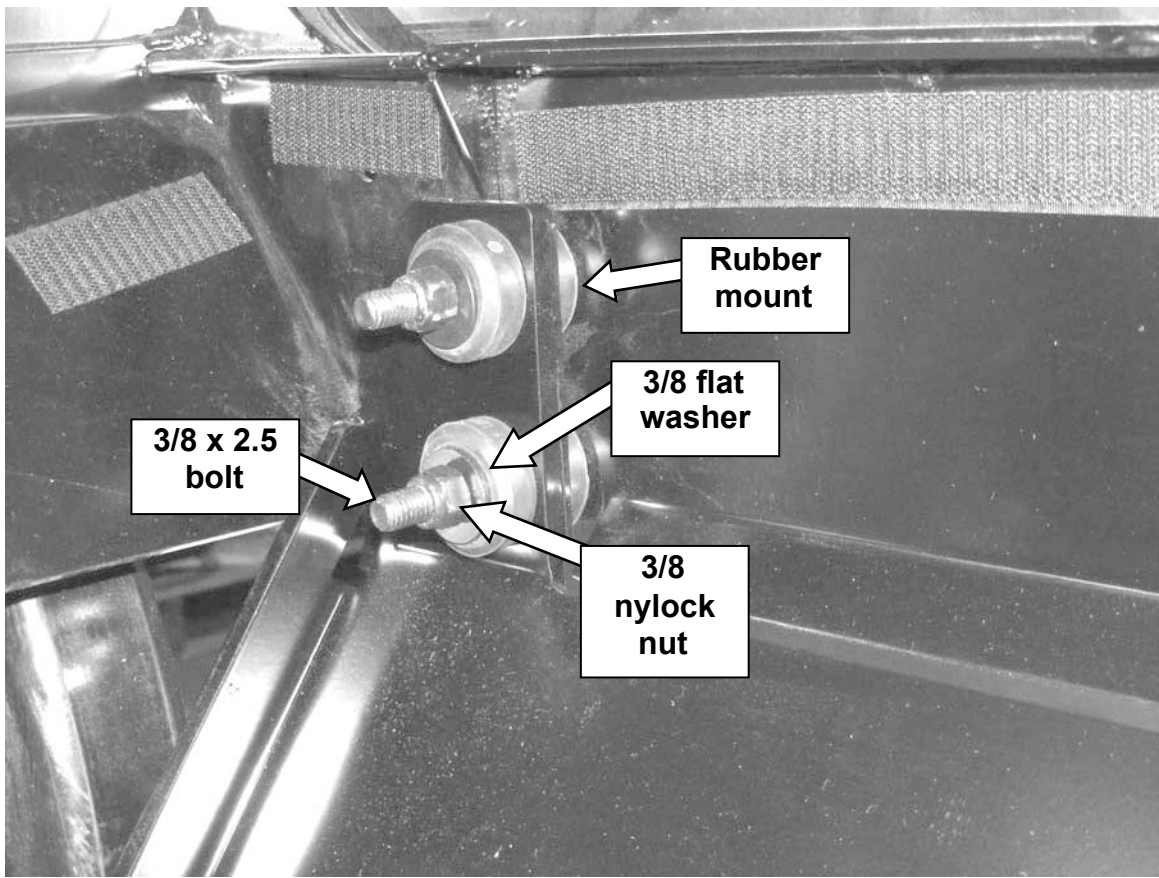
24. Install the rubber isolators (4) onto the rear mount bracket (**Figure 10**). Secure the rear mounting bracket to the back of cab using the hardware removed earlier (**Figure 10**);

- (4) 3/8" x 2.50" long, bolts
- (4) 3/8" nylock nuts
- (4) 3/8" flat washers

25. Tighten the nuts on the U-bolts for the rear mount.

**Torque bolts or nuts: Important! Using a torque wrench, torque all mounting hardware to the following torque specifications:**

- **3/8" hardware to 30 FT-LB (41 N-M)**
- **1/2" hardware to 70 FT-LB (95 N-M)**

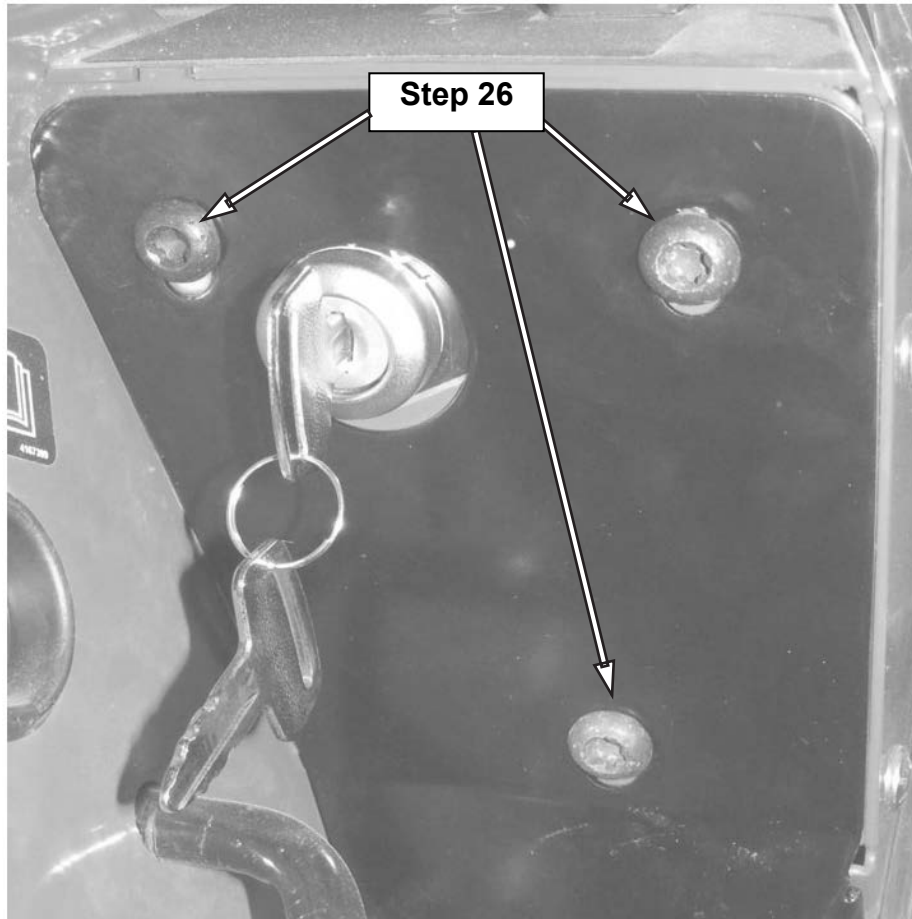


**Figure 10**

## **Cab Update kit Installation Instructions for Schiller Grounds Care, Steiner 440 Series Cabs**

### **Console filler panel installation;**

26. Remove existing RH Cover Panel on the front console of the machine and install the new right cover panel (**Item 1**) using existing hardware. (**Figure 11**)



**Figure 11**

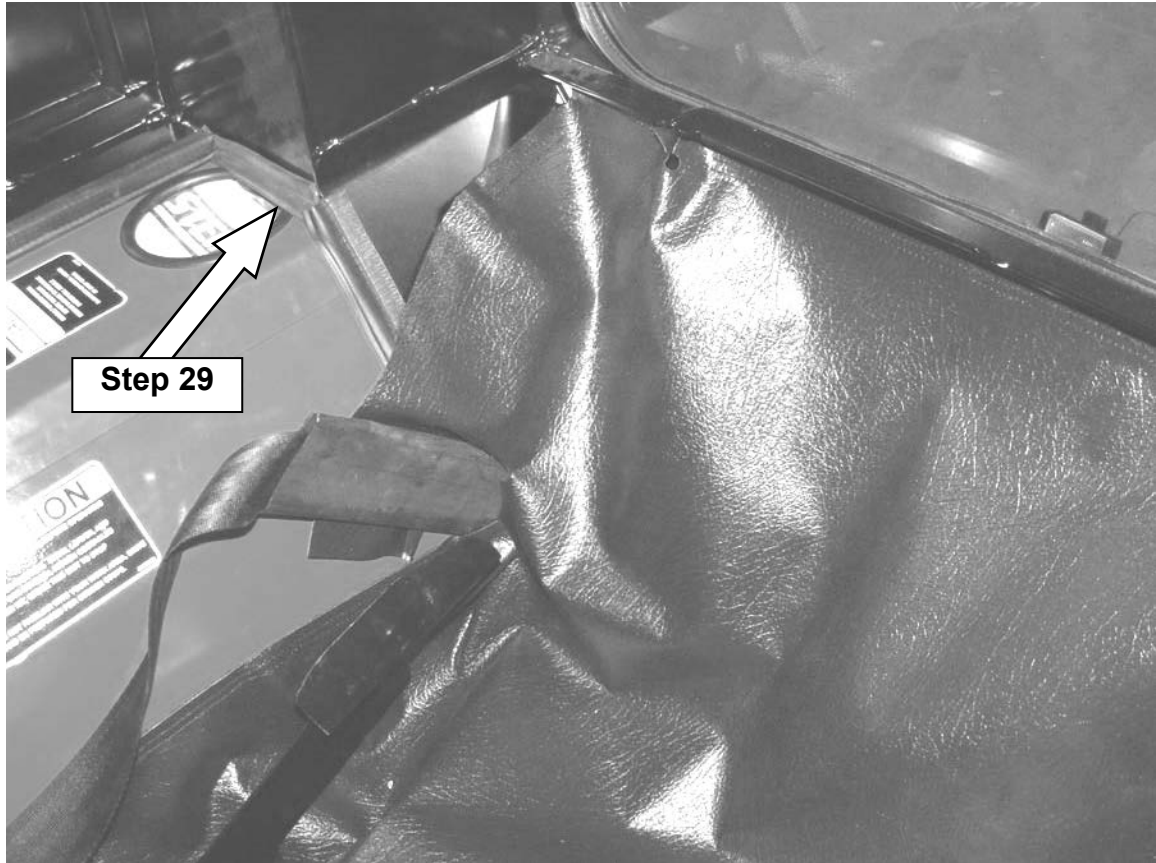
### **Electrical Hook-Up:**

27. Reconnect power to battery.

## **Cab Update kit Installation Instructions for Schiller Grounds Care, Steiner 440 Series Cabs**

### **SEALING THE CAB:**

28. Tip seat up and install under seat seal assembly textured side up (**Figure 12**). The seal fits over the seat release lever and around the seat belt sleeves.

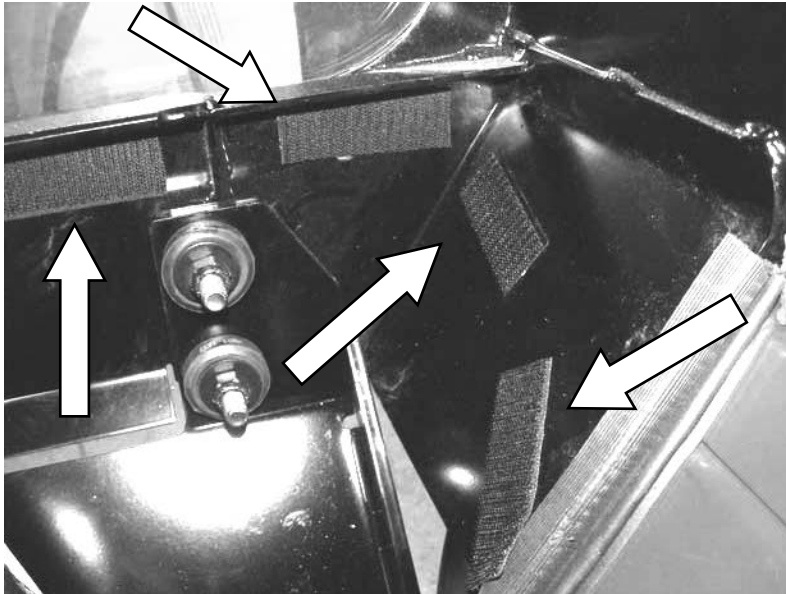


**Figure 12**

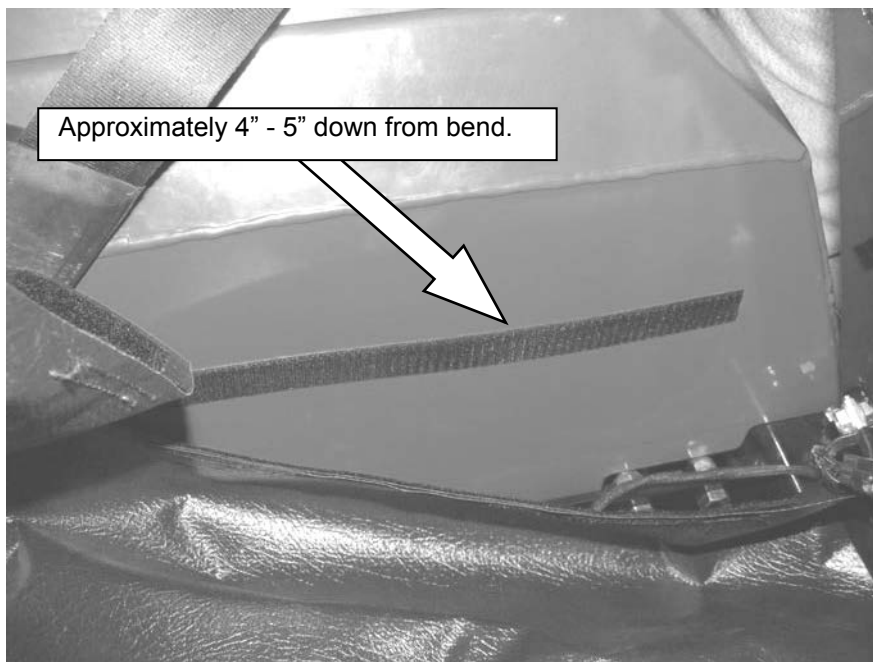
29. Lower the seat to normal position to help position the Velcro into place for the battery box and fuel tank before removing the liner and applying adhesive. Replace the 5" long lower cab seal on both sides (**Figure 12**).
30. After positioning the seal – peel off the liner on the PSA Velcro strips and attach to the rear wall of the cab and to the fenders. Apply pressure to the Velcro to get good adhesion. (**Figure 13-14**).



**Cab Update kit Installation Instructions for  
Schiller Grounds Care, Steiner 440 Series Cabs**



**Figure 13**



**Figure 14**

Cab update installation is now complete.