

LITTLE WONDER

PRO EDGER
6232-00-59



MAN 4168762
Rev A. 01-2013
Original Language Instructions

Set-Up and Parts Manual for
LITTLE WONDER Pro Edger

PARTS / SET-UP MANUAL

CALIFORNIA

Proposition 65 Warning

Diesel engine exhaust and some of its constituents are known to the State of California to cause cancer, birth defects and other reproductive harm.

⚠ WARNING

The engine exhaust from this product contains chemicals known to the State of California to cause cancer, birth defects or other reproductive harm.

CALIFORNIA

Proposition 65 Warning

Battery posts, terminals, wiring insulation, and related accessories contain lead and lead compounds, chemicals known to the State of California to cause cancer and birth defects or other reproductive harm.

WASH HANDS AFTER HANDLING.

IMPORTANT MESSAGE

Thank you for purchasing this Little Wonder product. You have purchased a world class product, one of the best designed and built anywhere.

This machine comes with an Operation and Safety Manual, Parts and Service Manual, and Engine Manual. The useful life and good service you receive from this machine depends to a large extent on how well you read and understand these manuals. Treat your machine properly, lubricate and adjust it as instructed, and it will give you many years of reliable service.

Your safe use of this Little Wonder product is one of our prime design objectives. Many safety features are built in, but we also rely on your good sense and care to achieve accident-free operation. For best protection, study the manuals thoroughly. Learn the proper operation of all controls. Observe all safety precautions. Follow all instructions and warnings completely. Do not remove or defeat any safety features. Make sure those who operate this machine are as well informed and careful in its use as you are.

See a Little Wonder dealer for any service or parts needed. Little Wonder service ensures that you continue to receive the best results possible from Little Wonder products. You can trust Little Wonder replacement parts because they are manufactured with the same high precision and quality as the original parts.

Little Wonder designs and builds its equipment to serve many years in a safe and productive manner. For longest life, use this machine only as directed in the manuals, keep it in good repair and follow safety warnings and instructions. You'll always be glad you did.

LITTLE WONDER
SCHILLER GROUNDS CARE, INC.
1028 STREET ROAD, P.O. BOX 38
SOUTHAMPTON, PA 18966

TABLE OF CONTENTS	FIGURES	PAGE
SAFETY.....		4-6
SET UP INSTRUCTIONS.....		7
CONTROLS.....		8
PARTS SECTION.....		9
HANDLE ASSY.....	FIGURE 1	10, 11
BLADE / DRIVE ASSY	FIGURE 2	12, 13
MAIN FRAME ASSY.....	FIGURE 3	14, 15
WARRANTY		BACK COVER

See manual 4168761 for Operator’s Manual



This Manual is part of the machine. Suppliers of both new and second-hand machines must make sure that this manual is provided with the machine.

NOTICE !!!

Unauthorized modifications may present **extreme** safety hazards to operators and bystanders and could also result in product damage.

Schiller Grounds Care, Inc. strongly warns against, rejects and disclaims any modifications, add-on accessories or product alterations that are not designed, developed, tested and approved by Schiller Grounds Care, Inc. Engineering Department. Any Schiller Grounds Care, Inc. product that is altered, modified or changed in any manner not specifically authorized after original manufacture-including the addition of "after-market" accessories or component parts not specifically approved by Schiller Grounds Care, Inc. will result in the Schiller Grounds Care, Inc. Warranty being voided.

Any and all liability for personal injury and/or property damage caused by any unauthorized modifications, add-on accessories or products not approved by Schiller Grounds Care, Inc. will be considered the responsibility of the individual(s) or company designing and/or making such changes. Schiller Grounds Care, Inc. will vigorously pursue full indemnification and costs from any party responsible for such unauthorized post-manufacture modifications and/or accessories should personal injury and/or property damage result.



This symbol means:
ATTENTION!
BECOME ALERT!

Your safety and the safety of others is involved.

Signal word definitions:

The signal words below are used to identify levels of hazard seriousness. These words appear in this manual and on the safety labels attached to Schiller Grounds Care, Inc. machines. For your safety and the safety of others, read and follow the information given with these signal words and/or the symbol shown above.

⚠ DANGER

DANGER indicates an imminently hazardous situation which, if not avoided, **WILL** result in death or serious injury.

⚠ WARNING

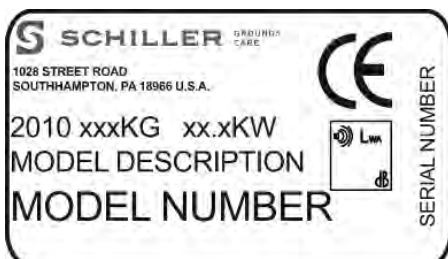
WARNING indicates a potentially hazardous situation which, if not avoided, **COULD** result in death or serious injury.

⚠ CAUTION

CAUTION indicates a potentially hazardous situation which, if not avoided, **MAY** result in minor or moderate injury. It may also be used to alert against unsafe practices or property damage.

CAUTION

CAUTION used without the safety alert symbol indicates a potentially hazardous situation which, if not avoided, **MAY** result in property damage.



MODEL NUMBER: This number appears on sales literature, technical manuals and price lists.

SERIAL NUMBER: This number appears only on your unit. It contains the model number followed consecutively by the serial number. Use this number when ordering parts or seeking warranty information.

MAINTENANCE SAFETY

IN GENERAL

- Maintain machine according to manufacturer's schedule and instructions for maximum safety and best results.
- Park machine on level ground.
- Never allow untrained personnel to service machine.
- Guards should only be removed by a qualified technician for maintenance or service. Replace when work is completed.
- Adjust or repair only after the engine has been stopped and the blade has stopped moving.
- Disconnect spark plug wire before doing any maintenance.
- Replace parts if worn, damaged or faulty. For best results, always replace with parts recommended by the manufacturer.
- Do not dismantle the machine without releasing or restraining forces which may cause parts to move suddenly.
- Provide adequate support, e.g. jack stands for lifted machine or parts if working beneath.
- Do not put hands or feet near or under rotating parts.
- Clean up spilled oil or fuel thoroughly.
- Replace faulty mufflers.
- To reduce fire hazards, keep the engine, muffler, and fuel storage area free of grass, leaves, debris buildup or grease.
- Never attempt to make adjustments while the engine is running except for repairs or adjustments as specifically noted, such as for carburetor adjustment, where the engine must be running. Keep hands and feet clear of moving parts in these circumstances.

Blades

Do not straighten or weld blades. Replace damaged blades.

Fuel

- Gasoline (petrol) and diesel fuels are flammable; gasoline (petrol) vapors are explosive. Use extra care when handling.
- Store only in containers specifically designed for fuel.



- When refueling or checking fuel level:
 - Stop the engine and allow to cool;
 - Do not smoke;
 - Refuel outdoors only;
 - Use a funnel;
 - Do not overfill;
 - If fuel is spilled, do not attempt to start the engine until the spill is cleaned up and vapors have cleared.
- Replace caps on fuel containers and tanks securely.

Sparks from static electricity can start fires or cause explosions. Flowing fuel can generate static electricity. To prevent static electricity sparks:

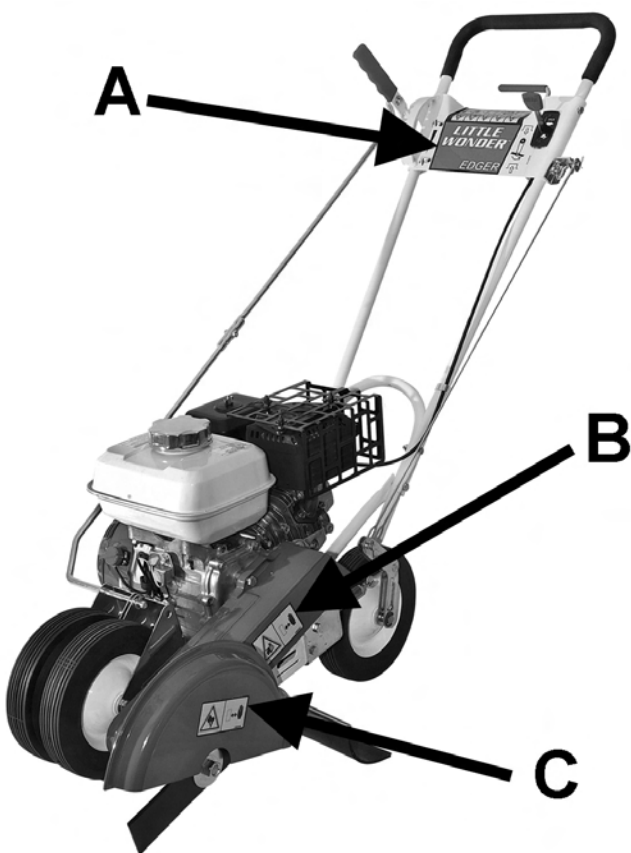
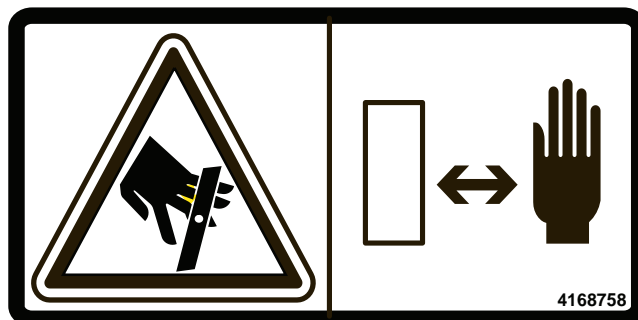
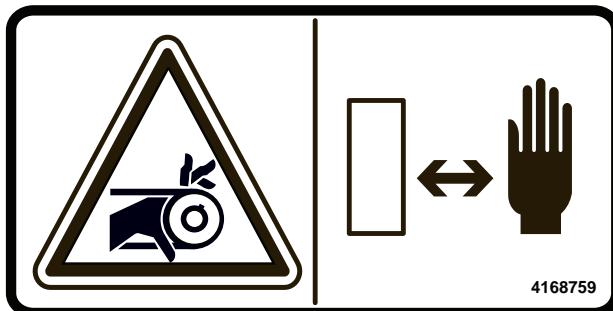
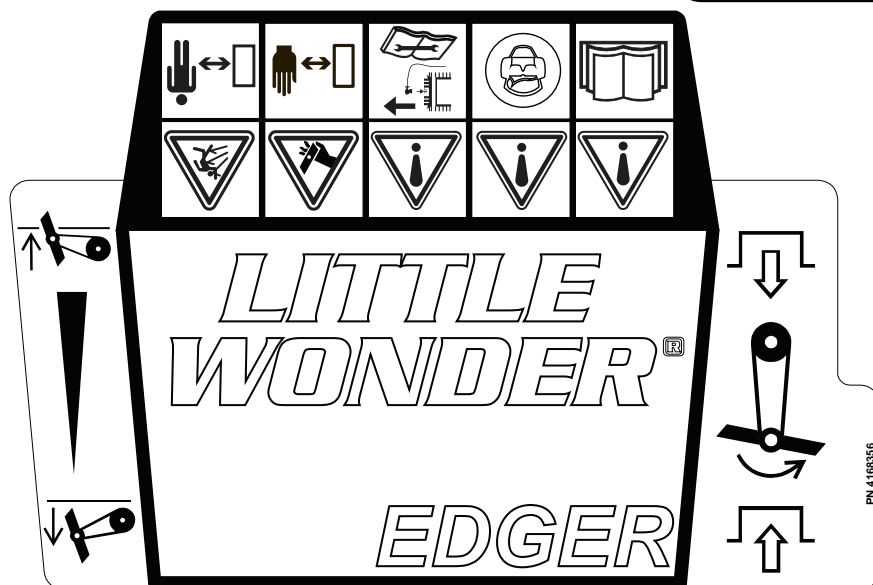
- Keep containers electrically grounded. Do not fill containers in a vehicle or on a truck or trailer bed with a plastic liner. Fill containers on the ground away from the vehicle.
- When practical, remove petrol (gasoline) powered equipment from the truck or trailer and refuel it on the ground. If equipment must be refueled on the truck or trailer, refuel from a portable container rather than a dispenser nozzle.
- Keep the dispenser nozzle in contact with the rim of the fuel tank or container opening until fueling is complete. Do not use a nozzle lock-open device.
- If fuel is spilled on clothing change it immediately.

STORAGE SAFETY

- Stop the engine and allow to cool before storing.
- Drain the fuel tank outdoors only.
- Store fuel in an approved container in a cool, dry place.
- Keep the machine and fuel containers in a locked storage place to prevent tampering and to keep children from playing with them.
- Do not store the machine or fuel container near an open flame, spark, or appliance, such as a water heater, or a pilot light.
- Keep gasoline (petrol) storage area free of grass, leaves and excessive grease to reduce fire hazard.
- Clean grass and debris from cutting units, drives, mufflers and engine to help prevent fires.

WARNING LABELS

Warning labels are an important part of the safety system incorporated in this machine.
Replace labels if damaged or illegible.

**Key #C P/N 4168758****Key #B P/N 4168759****Key #A P/N 4168356**

ASSEMBLY INSTRUCTIONS

Your Little Wonder Pro Edger requires a minimal amount of assembly prior to use. Use **Figures 1 & 3** in parts section for assembly.

1. Remove two nuts & bolts (P/N 472 & 144-1), holding handle supports (P/N 267 & 266) to lower handle (P/N 141-2).
2. Align upper handle (P/N 142-2) with lower handle (P/N 141-2) and replace the two nuts and bolts that were removed in step one.
3. Use two bolts & nuts (P/N 472 & 144-1) in the upper holes of the handles - now tighten all four bolts.
4. Use a #10-32 x 1 1/4 screw and lock nut (P/N 208 & 973) to connect the upper adjusting rod (P/N 155) to the lower adjusting rod (P/N 4163572).
5. Remove cotter pin and washer (P/N 156 & 163) from belt slackener lever (P/N 167-2) and place elongated loop of the draw bar (P/N 198) onto the belt slackener lever. Place washer back on and install cotter pin bending the legs once it is in place.
6. Remove the cotter pin (P/N 156) from the clevis pin (P/N 170) and slide the clevis pin out of its hole. Place the round hole of the draw bar (P/N 198) between the two holes of the link belt slackener (P/N 169) and slide clevis pin back in place.
7. Replace cotter pin and bend the legs.
8. Rotate the mud flap (P/N 209) out from under the machine so that it is as far forward as possible without touching the brush while the paving cleaner is in its lowest position and the rubber flap is bent forward. Tighten from underneath.
5. Position the enclosed Blade Guard (P/N 129B-W.17) over the blade.
6. Align the holes in the blade guard with those on the cutter head. Secure with two hex head screws (P/N 129C), lock washers (P/N 129D), and flat washers (P/N 163).

THROTTLE INSTALLATION

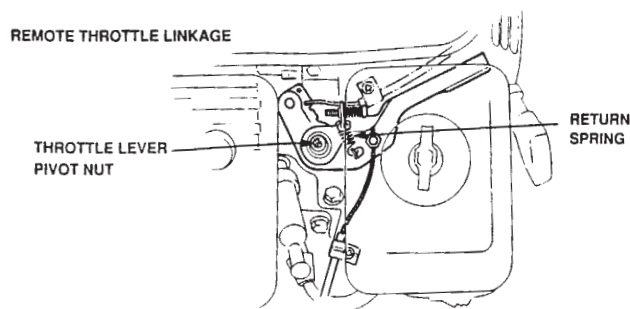
Use **Figure 1** in parts section for assembly.

1. Remove the air filter cover from the engine.
2. Use a 10mm socket to loosen the throttle lever pivot nut.
3. Move the remote throttle lever all the way to slow (turtle) position. Move it 1/16" - 1/8" back towards the fast (rabbit) position.
4. Move the engine throttle lever to the slow position (push throttle lever to the front of the edger).
5. Remove the throttle cable retaining clamp and screw from the engine.
6. Insert the end of the throttle cable into the hole on the engine throttle lever.
7. Place the cable-retaining clamp over the cable, insert the screw in and pull back and tighten.
8. Replace the air filter cover.
9. The remote throttle lever should move from slow to fast and be approximately centered in its slot.
10. If the throttle feels tight, loosen the engine throttle lever pivot nut.
11. If the throttle does not stay where it is placed, tighten the remote throttle lever pivot nut (P/N 410).

BLADE INSTALLATION

Use **Figure 2** in parts section for assembly.

1. Place one blade washer (P/N 128) on the cutter head shaft, and up against the bearing (P/N 124). make sure the side with the step is against the bearing and the flat side of the washer is facing away from the bearing.
2. Slide the Blade (P/N 129) onto the cutter head shaft.
3. Place remaining blade washer (P/N 128) on the cutter head shaft. Make sure the flat side is against the blade and the side with the step is facing away from the blade.
4. Attach a flange nut (P/N 130) onto the shaft and tighten..



CONTROLS

BLADE HEIGHT ADJUSTMENT LEVER (A)

Rotate the lever away from the operator to raise the blade.

Rotate the lever toward the operator to lower the blade.

THROTTLE CONTROL (B)

Controls engine speed and controls speed of the blade.

Pushing the lever forward makes the engine speed go faster, while pulling the lever back slows down the speed of the engine

BELT SLACKENER LEVER (C)

Rotate the lever towards the operator to disengage the blade.

Rotate the lever away from the operator to engage the blade.

ENGINE START/STOP SWITCH (D)

Move to the "OFF" position to stop the engine.

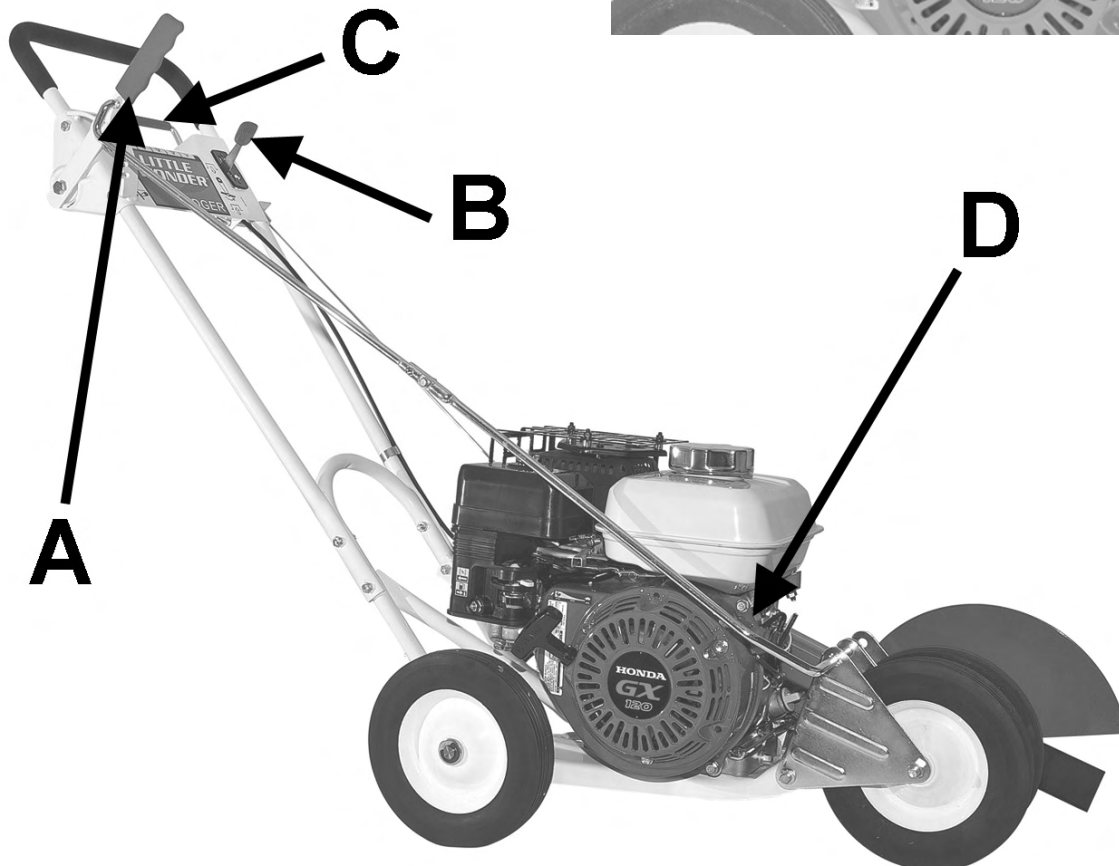
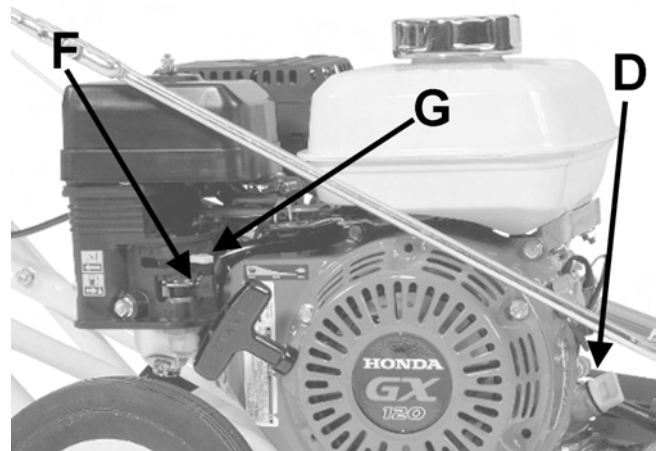
Move to the "ON" position before starting the engine.

FUEL VALVE (F)

Move to the "OFF" position to shut off the fuel whenever transporting the machine by trailer or truck or during storage. Move to the "ON" position before starting the engine.

CHOKE (G)

Move to the "CHOKE" position to apply the choke. Move to the "RUN" position to remove the choke.



PARTS SECTION

FIGURE 1

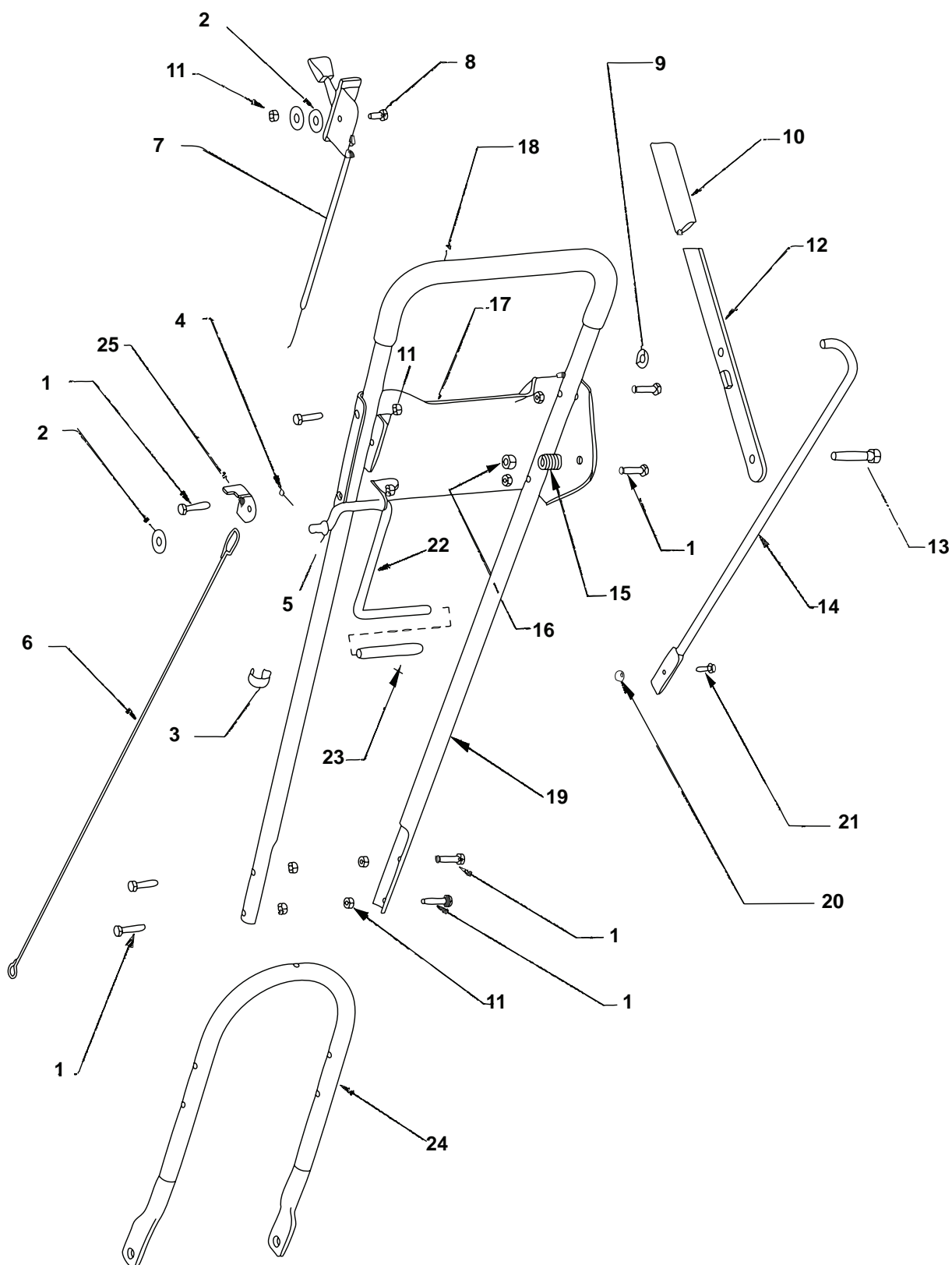


FIGURE 1

ITEM	PART NO.	DESCRIPTION	QTY
1	144-1	HEX HD CAP SCREW 1/4-20X1 1/4	12
2	163	WASHER - 3/8 ID	3
3	146B	THROTTLE CLIP	1
4	156	COTTER PIN	2
5	167A	SPEED NUT	1
6	198	DRAW ROD	1
7	271	THROTTLE ADJUST ASSEMBLY	1
8	410	HEX HEAD CAP SCREW 1/4-20 X 5/8	1
9	8-18	GRIP RING	1
10	227	GRIP - LEVER	1
11	472	LOCK NUT 1/4-20	9
12	228	LEVER	1
13	980	HEX HEAD CAP SCREW 3/8-16 X 2	1
14	155	ADJUSTING ROD UPPER	1
15	218	SPRING	1
16	102B	HEX NUT 3/8-16	2
17	226	HANDLE BRACE	1
18	236	GRIP - HANDLE	2
19	142-2	HANDLE UPPER	1
20	973	LOCK NUT #10-32	1
21	208	HEX HEAD CAP SCREW #10-32 X3/4	1
22	167-2	BELT SLACKENER LEVER	1
23	165A	GRIP	1
24	141-2	HANDLE-LOWER	1
25	219	BRACKET	1
26*	4168356	BRACE LABEL	1

*NOT ILLUSTRATED

FIGURE 2

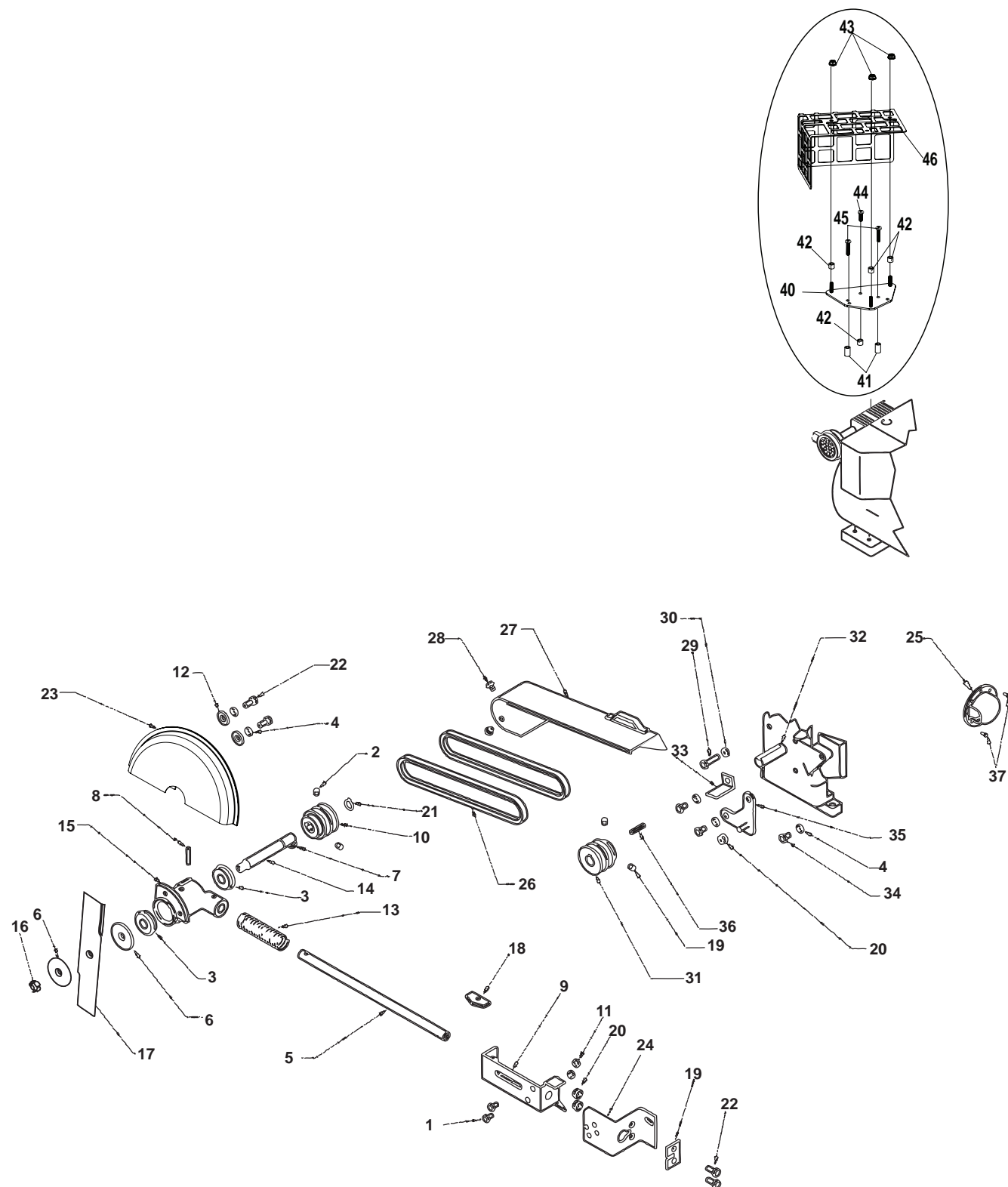


FIGURE 2

ITEM	PART NO.	DESCRIPTION	QTY
1	162B	HEX HEAD SCREW 1/4-20 X 1/2	2
2	118	SET SCREW 5/16-18 X 3/8	4
3	124	BEARING	2
4	129D	LOCK WASHER 5/16	5
5	131A	CUTTER HEAD SHAFT	1
6	128	BLADE WASHER	2
7	121	WOODRUFF KEY #606	1
8	132	TENSION PIN 1/4 X 1 1/4	1
9	100-C	DECK BRACKET	1
10	220	PULLEY CUTTER HEAD	1
11	472	LOCK NUT 1/4-20	7
12	163	WASHER - 3/8 ID	2
13	134	SPRING	1
14	181	CUTTER BLADE SHAFT	1
15	126	CUTTER HEAD	1
16	130	NUT 1/2-20	1
17	129	BLADE	1
18	138	KEY HEAD SHAFT	1
19	192	GUIDE PLATE	1
20	114B	FLANGE NUT 5/16-18	10
21	122	RETAINING RING	1
22	129C	HEX HEAD SCREW 5/16-18 X 3/4	8
23	129B-W.17	BLADE GUARD	1
24	191	GUIDE BRACKET	1
25	264	MUFFLER, EXHAUST DEFLECTOR	1
26	177	V BELT	2
27	195P	BELT GUARD	1
28	140	HEX HEAD SCREW 1/4 - 20 X 3/8	2
29	196	HEX HEAD SCREW 5/16-24 X 1 1/4	1
30	197	JAM NUT 5/16-24	1
31	251	PULLEY - ENGINE	1
32	262	ENGINE-4HP HONDA	1
33	212	BRACKET	1
34	213	HEX HEAD SCREW 5/16 - 24 X 3/4	3
35	253	ADAPTER PLATE	1
36	117	KEY, PULLEY - 3/16" SQUARE	1
37	265	M4X8 PHILLIPS HEAD SELF TAPPING	2
38*	4168758	WARNING LABEL BLADE	1
39*	4168759	WARNING LABEL	1
40	910156	MUFFLER PLATE HONDA	1
41	910158	STANDOFF 5/8	2
42	910159	STANDOFF 5/16	4
43	910531	NUT W/ FLANGE 10-24	3
44	910532	SCREW SELF TAPPING M5 X 16	1
45	910533	SCREW SELF TAPPING M5 X 25	2
46	4164805.7	MUFFLER GUARD-4HP HONDA	1

*NOT ILLUSTRATED

FIGURE 3

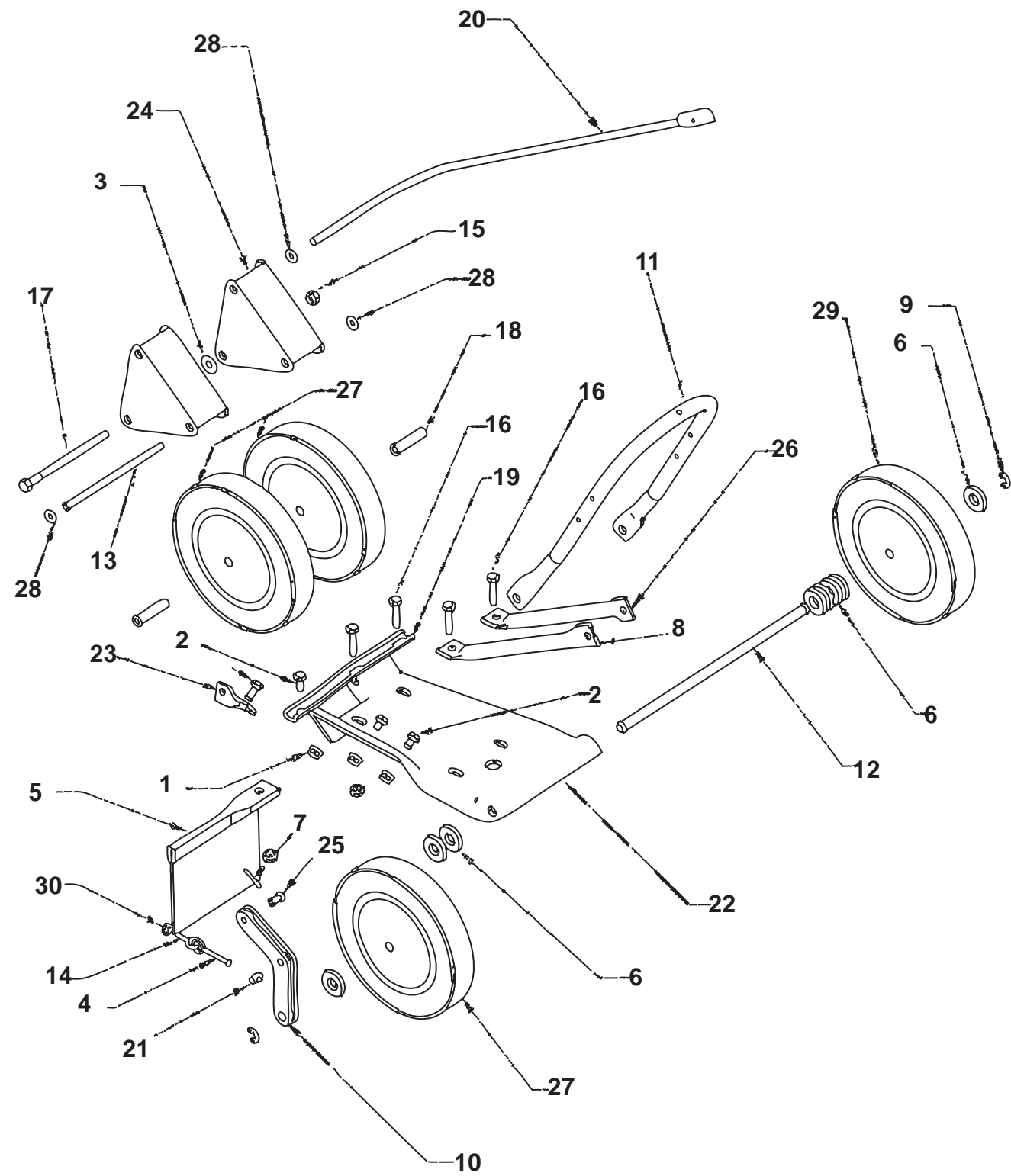


FIGURE 3

ITEM	PART NO.	DESCRIPTION	QTY
1	114B	FLANGE NUT 5/16-18	10
2	129C	HEX HD SCRW 5/16-18 X 3/4	8
3	163	WASHER - 3/8 ID	5
4	4163308	FORMED ROD .19 X 2.28	1
5	209	MUD FLAP	1
6	176	WASHER 1/2 ID	8
7	156	COTTER PIN	2
8	267	HANDLE SUPPORT - RH	2
9	103	RETAINING RING	2
10	169	LINK BELT SLACKENER	1
11	141-2	HANDLE-LOWER	1
12	184	AXLE	1
13	185	CLEVIS PIN	1
14	4163306	BOLT, EYE END 1/4-20X1.40	1
15	102B	HEX NUT 3/8-16	2
16	113	HEX HEAD SCREW 5/16-18X1 1/2	4
17	194	HEX HEAD SCREW 3/8-16X5 1/2	1
18	102C	SLEEVE	2
19	100D	DECK BRACKET SUPPORT	1
20	4163572	ADJUSTING ROD LOWER	1
21	171	CLEVIS PIN	1
22	100	DECK	1
23	193	FRONT WHEEL BRACKET	1
24	108	WHEEL HOUSING	2
25	170	CLEVIS PIN	1
26	266	HANDLE SUPPORT - LH	1
27	106	WHEEL	3
28	8-18	GRIP RING	3
29	107	OFFSET WHEEL	1
30	175B	NUT, 1/4-20	1

* NOT ILLUSTRATED



1 YEAR LIMITED SERVICE AND WARRANTY POLICY FOR LITTLE WONDER PRO EDGER

All LITTLE WONDER PRO EDGERS are warranted against defects in material and workmanship for a period of one (1) year from the date of purchase, under the following terms and conditions.

LITTLE WONDER will repair or replace, at its option, any part or parts of the product found to be defective in material or workmanship during the warranty period. Warranty repairs and replacements will be made without charge for parts or labor. All parts replaced under warranty will be considered as part of the original product, and any warranty on the replaced parts will expire coincident with the original product warranty. If you think your LITTLE WONDER PRO EDGER is defective in material or workmanship, you must return it to a registered dealer with a valid sales receipt or to our factory at 1028 Street Rd., Southampton, PA 18966. Transportation charges to ship your product to us or a registered dealer must be borne by you.

Engines for all gasoline powered products are warranted separately by the engine manufacturer. Therefore, there are no warranties made, expressed or implied, for engines for gasoline powered products by Little Wonder.

LITTLE WONDER assumes no responsibility in the event that the product was not assembled or used in compliance with any assembly, care, safety or operating instructions contained in the Owner's Manual or information accompanying the product. This limited warranty does not cover damages or defects due to normal wear and tear, lack of reasonable and proper maintenance, failure to follow operating instructions or Owner's Manual, misuse, lack of proper storage or accidents, nor does it cover routine maintenance parts and service. This limited warranty does not cover any defects due to repairs or alterations made to the product made by anyone other than LITTLE WONDER or its registered dealers.

You must maintain your LITTLE WONDER PRO EDGER by following the maintenance procedures described in the owner's manual. Such routine maintenance, whether performed by you or a registered dealer, is at your expense.

LITTLE WONDER MAKES NO EXPRESS OR IMPLIED WARRANTIES REPRESENTATIONS OR PROMISES EXCEPT THOSE CONTAINED HEREIN. THERE ARE NO OTHER WARRANTIES, INCLUDING WARRANTIES OF MERCHANTABILITY AND FITNESS FOR A PARTICULAR PURPOSE. ALL WARRANTIES OTHER THAN THE EXPRESS WARRANTY SET FORTH ABOVE ARE SPECIFICALLY DISCLAIMED. THE DURATION OF ANY IMPLIED WARRANTY, INCLUDING MERCHANTABILITY AND FITNESS FOR A PARTICULAR PURPOSE, IS LIMITED TO THE DURATION OF THIS WRITTEN LIMITED WARRANTY. LITTLE WONDER DISCLAIMS ALL LIABILITY FOR INDIRECT, INCIDENTAL AND/OR CONSEQUENTIAL DAMAGES IN CONNECTION WITH THE USE OF THE LITTLE WONDER PRO EDGER PRODUCTS COVERED BY THIS WARRANTY. SOME STATES DO NOT ALLOW LIMITATIONS ON HOW LONG AN IMPLIED WARRANTY LASTS AND/OR DO NOT ALLOW THE EXCLUSION OR LIMITATION OF INCIDENTAL OR CONSEQUENTIAL DAMAGES, SO THAT ABOVE LIMITATIONS AND EXCLUSIONS MAY NOT APPLY TO YOU. THIS WARRANTY GIVES YOU SPECIFIC LEGAL RIGHTS, AND YOU MAY ALSO HAVE OTHER RIGHTS WHICH VARY FROM STATE TO STATE.

LITTLE WONDER®

**SCHILLER GROUNDS CARE, INC.
1028 STREET ROAD, P.O. BOX 38
SOUTHAMPTON, PA 18966**

PHONE 877-596-6337 • FAX 215-357-8045

www.littlewonder.com