



One BOB-CAT Lane, P.O. Box 469  
Johnson Creek, WI 53038 U.S.A.  
(920) 699 2000  
Fax: (920) 699 6836

## SERVICE BULLETIN

**Date:** June 24, 2013

**Bulletin No:** JC-13-17

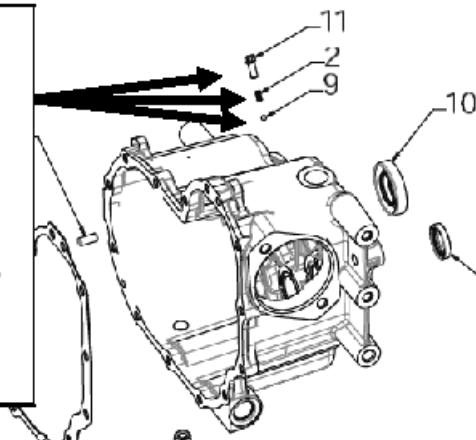
**Product Type:** STEINER

**Customer Issue:** Hard shifting from high to low range or breaking the 81" rear shifter cable (4166533) and/or 25" front shifter cable (4166532).

**Cause:** The shifter detent springs in the transaxles have blue silicon sealant in them which does not allow the detent spring to compress. This binds the shift rod when sliding from high to low.

This shows the parts in the exploded drawing.

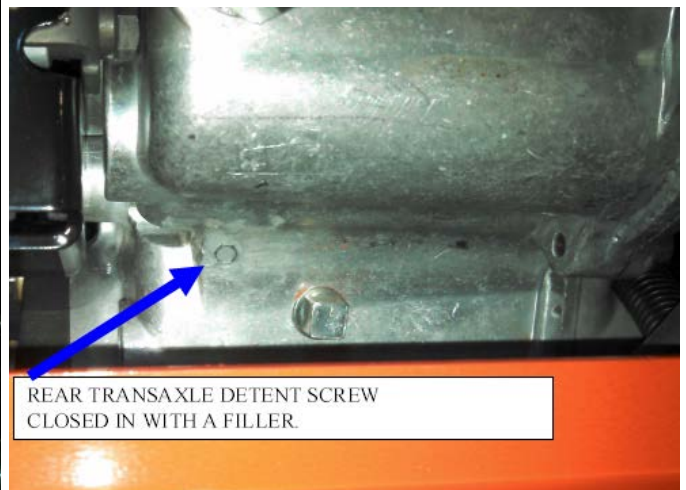
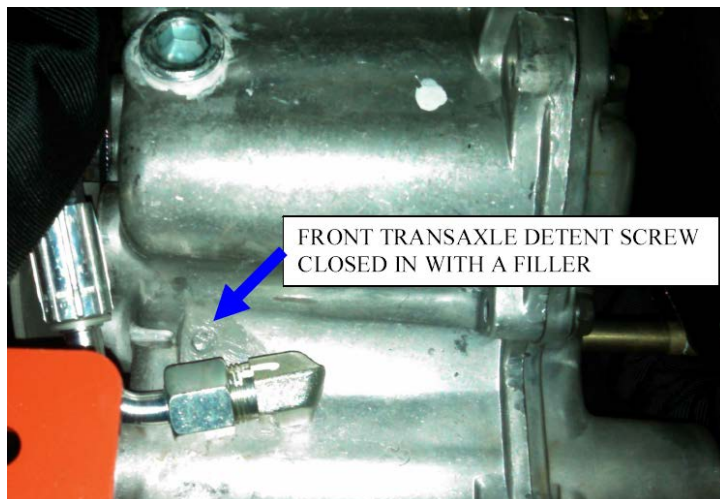
2	51-792003	DETENT-SPRING	1
3	89-008	SEAL-OIL 1.0 ID	1
4	69051-7	PLUG-MAGNETIC DRAIN	1
5	51-780045	WASHER 1.002ID .061W	2
6	51-780012	BEARING-THRUST	1
7	89-007	SEAL-OIL .5000 ID	1
8	51-792067	BOLT-HEX HD 5/16-18 THD	13
9	51-792004	BALL 3/16 DIA	1
10	89-006	SEAL OIL 1.125 ID	2
11	51-792100	BOLT-HEX HD 1/4-20 X .625	1



**Action required:** Check and / or Clean out the detents

### 1. Check the transaxles detent screws.

- A. If you see the gray sealant, this confirms they are good and no corrective action is required.

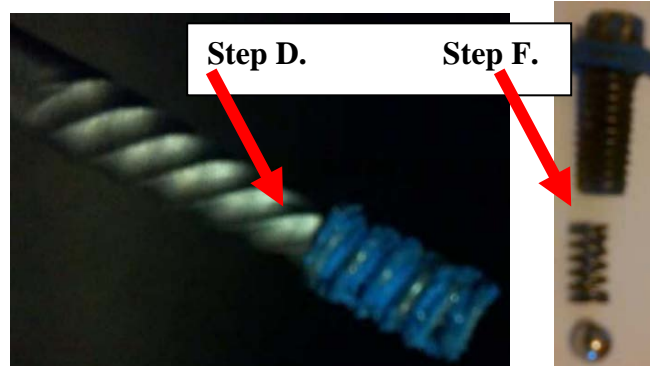




One BOB-CAT Lane, P.O. Box 469  
Johnson Creek, WI 53038 U.S.A.  
(920) 699 2000  
Fax: (920) 699 6836

## 2. Clean out the detent hole.

- A. Front axle: lift engine high enough to gain access to the detent screw.
- B. Rear axle: remove the shield in front of the axle to gain access to the detent.
- C. Remove the detent screw, spring and ball.
- D. If the spring does not come out with the screw, use a small easy out to thread into the spring, then pull it out.



- E. If the detent ball does not come out with the spring, then use a little pick and some spray solvent to loosen the ball. The ball does not need to be removed.
- F. Clean the spring and reassemble it.
- G. Thread the detent screw into the hole: Do not over tighten it. You may need to use a light lock-tite to seal it.
- H. Remove the shifter cables from the shifter linkage and shift the transaxle into High and Low. You should feel the detent lock and the shaft should slide with ease.
- I. If needed back off the detent screw until the transaxle shifter shaft slides into High and Low with ease and you can feel the detent lock.
- J. Ensure the shifter shaft slides smoothly in and out of the transaxle. If it does not, then back off the detent screw until the shifter shaft slides smoothly in and out of the transaxle.
- K. Connect the cables.

## 3. When the cables are hooked up, check to see if the shift lever is now able to shift both transaxles without using force. **Note:** Rock the tractor back and forth slightly to align gears if needed.

- A. The cables must be set so the shift lever shifts both transaxles at the same time. When the shift lever is in high, low or neutral, both transaxles need to be in the same range.
- B. Tighten the shift lever pivot bolt so the lever can only be pulled out far enough to clear the stop. If it goes too far, it can stress the cables.

**Products Involved:** 440 tractors: 75-72010, 75-72011, 75-72012, and 75-72013. There are no serial number breaks to tell when the good transaxles started being used in assembly. During set up and delivery of all 440 tractors, make certain the shifter works properly and a quick visual of the detent screw will let you know what to do.



One BOB-CAT Lane, P.O. Box 469  
Johnson Creek, WI 53038 U.S.A.  
(920) 699 2000  
Fax: (920) 699 6836

**Warranty:** You may claim up to the time shown in the below chart, for units covered under this bulletin. Please file warranty using Service Bulletin Number JC-13-17 with one unit per claim.

FRONT TRANSAXLE ONLY	2 HOUR
REAR TRANSAXLE ONLY	1 HOURS
BOTH TRANSAXLES	3 HOURS

If you have any questions, please contact our Customer Service Department at 920-699-2000.

This bulletin is relevant to the departments checked below. Please circulate as appropriate.

SERVICE

☒

WARRANTY

☒

SALES

☒

PARTS

☐