

MAN 4170180
Rev. A 04-2014



MODEL:
75-71300
ROUGH CUT MOWER -72"

OP/PARTS MANUAL

CALIFORNIA

Proposition 65 Warning

Diesel engine exhaust and some of its constituents are known to the State of California to cause cancer, birth defects and other reproductive harm.

⚠ WARNING

The engine exhaust from this product contains chemicals known to the State of California to cause cancer, birth defects or other reproductive harm.

Californie Proposition 65 Avertissement

Les échappements des moteurs diesel et certains de leurs composés sont reconnus par l'Etat de Californie pour être cancérigènes, provoquer des défauts congénitaux et d'autres dangers en matière de reproduction.

California Advertencia

⚠ AVERTISSEMENT

L'émission du moteur de ce matériel contient des produits chimiques que l'Etat de Californie considère être cancérigènes, provoquer des défauts congénitaux et d'autres dangers en matière de reproduction.

de la Proposicion 65

El estado de California hace saber que los gases de escape de los motores diesel y algunos de sus componentes producen cáncer, defectos de nacimiento y otros daños en el proceso de reproducción humana.

⚠ ADVERTENCIA

El estado de California hace saber que los gases de escape de este producto contienen productos químicos que producen cáncer, defectos de nacimiento y otros daños en el proceso de reproducción humana.

CALIFORNIA

Proposition 65 Warning

Battery posts, terminals, wiring insulation, and related accessories contain lead and lead compounds, chemicals known to the State of California to cause cancer and birth defects or other reproductive harm.

WASH HANDS AFTER HANDLING.

ROUGH CUT MOWER

IMPORTANT MESSAGE

Thank you for purchasing this Schiller Grounds Care, Inc. product. You have purchased a world class product, one of the best designed and built anywhere.

This product comes with an Owner/Operator's Manual. The useful life and good service you receive from this product depends to a large extent on how well you read and understand this manual. Treat this product properly and adjust it as instructed, and it will give you many years of reliable service.

See a Schiller Grounds Care, Inc. dealer for any service or parts needed. Schiller Grounds Care, Inc. service ensures that you continue to receive the best results possible from Schiller Grounds Care, Inc. products. You can trust Schiller Grounds Care, Inc. replacement parts because they are manufactured with the same high precision and quality as the original parts.

Schiller Grounds Care, Inc. designs and builds its equipment to serve many years in a safe and productive manner. For longest life, use this product only as directed in the manual, keep it in good repair and follow safety warnings and instructions. You'll always be glad you did.

Schiller Grounds Care, Inc.
One Bob Cat Lane
Johnson Creek, WI 53038-0469

TABLE OF CONTENTS	FIGURES	PAGE
DESCRIPTION / SPECIFICATIONS		4
SAFETY		5-8
DECALS		9
INSTALLATION		10
OPERATION.....		11
SERVICE		12-13
ADJUSTMENTS		14
DRIVE BELT INSTALLATION.....		15
TRANSPORT		16
PARTS SECTION.....		17
DECK ASSEMBLY.....	FIGURE 1	18, 19
PTO, DRIVE SHAFTS & LIFT ARMS	FIGURE 2	20, 21
SPINDLES, PULLEYS, & BLADES.....	FIGURE 3	22, 23
DECK LIFT LOCK	FIGURE 4	24, 25
DECALS	FIGURE 5	26, 27
SHIELDS	FIGURE 6	28, 29

DESCRIPTION

The Rough Cut Mower will cut through tall, dense growth and 1" woody stems. Mounted on the front lift, this mower cuts the growth before it is pressed down by the tractor, and offers excellent visibility to your work.

SPECIFICATIONS

Overall Width	76.28" with skids / 73" deck alone
Mower Drive	PTO Belt
Spindles.....	Three cast iron housings, ball bearings
Cutting Width	71.53"
Cutting Height.....	3-3/4" to 6"
Discharge	Rear
Weight	430 lbs.

NOTICE !!!

Unauthorized modifications may present **extreme** safety hazards to operators and bystanders and could also result in product damage.

Schiller Grounds Care, Inc. strongly warns against, rejects and disclaims any modifications, add-on accessories or product alterations that are not designed, developed, tested and approved by Schiller Grounds Care, Inc. Engineering Department. Any Schiller Grounds Care, Inc. product that is altered, modified or changed in any manner not specifically authorized after original manufacture—including the addition of “after-market” accessories or component parts not specifically approved by Schiller Grounds Care, Inc.—will result in the Schiller Grounds Care, Inc. Warranty being voided.

Any and all liability for personal injury and/or property damage caused by any unauthorized modifications, add-on accessories or products not approved by Schiller Grounds Care, Inc. will be considered the responsibility of the individual(s) or company designing and/or making such changes. Schiller Grounds Care, Inc. will vigorously pursue full indemnification and costs from any party responsible for such unauthorized post-manufacture modifications and/or accessories should personal injury and/or property damage result.



This symbol means:

ATTENTION!
BECOME ALERT!

Your safety and the safety of others is involved.

Signal word definitions:

The signal words below are used to identify levels of hazard seriousness. These words appear in this manual and on the safety labels attached to Schiller Grounds Care, Inc. machines. For your safety and the safety of others, read and follow the information given with these signal words and/or the symbol shown above.

DANGER

DANGER indicates an imminently hazardous situation which, if not avoided, **WILL** result in death or serious injury.

WARNING

WARNING indicates a potentially hazardous situation which, if not avoided, **COULD** result in death or serious injury.

CAUTION

CAUTION indicates a potentially hazardous situation which, if not avoided, **MAY** result in minor or moderate injury. It may also be used to alert against unsafe practices or property damage.

CAUTION

CAUTION used without the safety alert symbol indicates a potentially hazardous situation which, if not avoided, **MAY** result in property damage

Schiller Grounds Care, Inc.

One Bobcat Lane
Johnson Creek, WI 53038 U.S.A.
Phone: 920-699-2000
Fax: 920-699-3683

MODEL NUMBER

SERIAL NUMBER

MODEL NUMBER: This number appears on sales literature, technical manuals and price lists.

SERIAL NUMBER: This number appears only on your mower. It contains the model number followed consecutively by the serial number. Use this number when ordering parts or seeking warranty information.

GENERAL SAFETY

- Read and understand the owner’s manual, before attempting to operate this machine.
- Operate all controls from the operator’s seat, (if so equipped). **NO RIDERS.**
- Keep all shields in place and safety switches adjusted properly.
- Do not leave equipment unattended. **STOP** the engine and remove the key (if so equipped).
- Do not allow minors or the inexperienced to operate this machine.
- Do not anyone to operate or service this machine while under the influence of alcohol or drugs.
- Keep people and pets a safe distance away from machines using power driven attachments. Injury could result from flying debris.
- Wear protective clothing and personal safety devices to protect your head, eyes, ears, hands, and feet.
- Operate the machine only in daylight or in good artificial light.

**SAFE OPERATION PRACTICES FOR
MOWERS**



This cutting machine is capable of amputating hands and feet and throwing objects. Failure to observe the following safety instructions could result in serious injury or death.

GENERAL OPERATION

1. Read, understand, and follow all instructions in the manual and on the machine before starting.
2. Only allow responsible adults, who are familiar with the instructions, to operate the machine.

3. Clear the area of objects such as rocks, toys , wire, etc., which could be picked up and thrown by the blade.
4. Be sure the area is clear of other people before mowing. Stop the machine if anyone enters the area.
5. Never carry passengers.
6. Do not mow in reverse unless absolutely necessary. Always look down and behind before and while backing.
7. Slow down before turning.
8. Never leave a running machine unattended. Always turn off blades, set parking brake, stop engine, and remove keys before dismounting.
9. Turn off blades when not mowing.
10. Stop engine before unclogging or cleaning under deck.
11. Mow only in good light, keeping away from holes and hidden hazards.
12. Do not operate the machine while under the influence of alcohol or drugs.
13. Watch for traffic when operating near or crossing roadways.
14. Use extra care when loading or unloading the machine into a trailer or truck.
15. Always wear safety goggles or safety glasses with side shields when operating mower.

SLOPE OPERATION

WARNING

Slopes are a major factor related to loss-of-control and tip-over accidents, which can result in severe injury or death. All slopes require extra caution. If you feel uneasy on it, do not mow it.

DO:

- Mow up and down slopes where possible.
- Remove obstacles such as rocks, tree limbs, etc.
- Watch for holes, ruts, or bumps. Uneven terrain could overturn the machine. Tall grass can hide obstacles.
- Use slow speed (low range). Do not attempt to shift while on a slope.
- Follow the manufacturers recommendations for wheel weights or counterweights to improve stability.
- Keep all movement on the slope slow and gradual. Do not make sudden changes in speed or direction.
- Avoid stopping or starting on a slope. If tires lose traction, disengage the blades and proceed slowly straight down the slope.
- Use ROPS and a seat belt. Install wheel extensions or dual wheels on tractor for more stability.

DO NOT:

- Do not turn on slopes unless necessary, and then, turn slowly and gradually downhill, if possible.
- Do not mow drop-offs, ditches, or embankments. The mower could suddenly turn over if a wheel is over the edge of a cliff or ditch, or if an edge caves in.
- Do not mow on wet grass. Reduced traction could cause sliding.
- Do not try to stabilize the machine by putting your foot on the ground.

CHILDREN

WARNING

Tragic accidents can occur if the operator is not alert to the presence of children. Children are often attracted to the machine and the mowing activity. Never assume that children will remain where you last saw them.

1. Keep children out of the mowing area and under the watchful eye of another responsible adult.
2. Be alert and turn machine off if children enter the area.
3. Before and when backing, look behind and down for small children.
4. Never carry children as passengers, even with the blades turned off. They may suddenly fall off and be seriously injured or interfere with safe machine operation.
5. Never allow children to operate the machine.
6. Use extra care when approaching blind corners, shrubs, trees, or other objects that may obscure vision.

SERVICE

1. Use extra care in handling gasoline and other fuels. They are flammable and the vapors are explosive.
 - a. Use an approved container.
 - b. Never remove gas cap or add fuel with engine running. Allow engine to cool before refueling. Do not smoke.
 - c. Never refuel or drain the machine indoors.
 - d. Never store the machine or fuel container inside where there is an open flame, such as near a water heater.
2. Never run the machine in a closed area.
3. Keep nuts and bolts, especially blade attachment bolts, tight and keep equipment in good condition.
4. Never tamper with safety devices. Check their proper operation regularly.
5. Keep machine free of grass, leaves, and other debris build-up. Clean up oil or fuel spillage. Allow machine to cool before storing.
6. Stop and inspect the equipment if you strike an object. Repair, if necessary, before restarting.
7. Never make adjustments or repairs with the engine running.
8. Frequently check components and replace with manufacturer's recommended parts, when necessary.
9. Mower blades are sharp and can cut. Wrap the blade(s) or wear gloves, and use extra caution when servicing them.

⚠ WARNING



BEFORE STARTING:

- Read and understand Operator manual and labels.
- Wear hearing and eye protection.
- Replace labels and Operator manual if lost or damaged.

⚠ WARNING

AVOID SERIOUS INJURY OR DEATH:

- Remove objects that could be thrown by the blade.
- Use extra caution on slopes.
- Stop blade and drive down slowly if machine slides or stops going on slope.
- Do not mow when children or others are around.
- Do not operate unless trained.
- Do not operate unless guards, shields and interlocks are in place and working.

⚠ WARNING

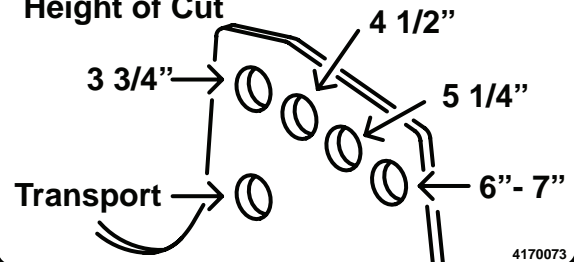
- Remove debris buildup. Debris under belt cover or near muffler can cause fires.
- the blade will continue to rotate for a few seconds after it is turned off.
- Blade must be at least 1/8" above bottom of housing.
- Check blade bolt daily for tightness.
- Inspect for damage after striking a foreign object. Make repairs before restarting operation.
- Find and repair cause of any abnormal vibration.

⚠ ADVERTENCIA

- Lea y entienda el manual del operador y las etiquetas.
- Píde que alguien lea y explique el manual y las etiquetas a usted si usted no lee Inglés.
- Use protección ocular y auditiva.
- No haga funcionar sin los protectores en su lugar.
- Mantenga las manos, pies y ropa alejados de las piezas móviles.
- Pare el motor antes de dar servicio.
- La gente a más durante la operación.

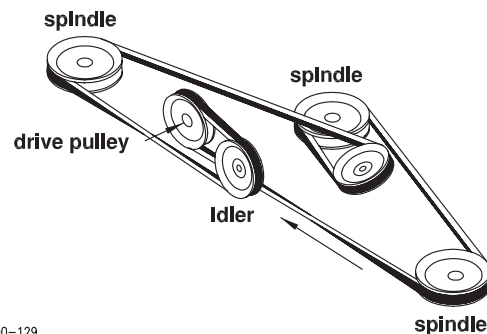
4166628

Height of Cut



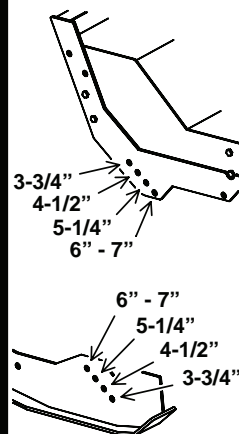
4170073

MOWER DRIVE BELT INSTALLATION DIAGRAM



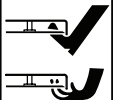
00-129

HEIGHT OF CUT



4170207

⚠ DANGER ROTATING BLADES



- KEEP HANDS AND FEET AWAY
- STOP ENGINE AND LET BLADES STOP BEFORE REMOVING GRASS COLLECTOR OR UNCLOGGING.

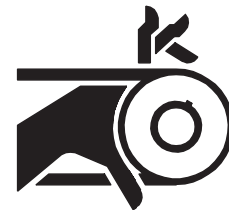
⚠ WARNING THROWN OBJECTS



- KEEP AREA CLEAR OF PEOPLE AND PETS.
- REMOVE OBJECTS BLADE MAY STRIKE AND THROW.
- STOP BLADES TO CROSS GRAVEL AREAS.
- DO NOT OPERATE WITHOUT CHUTE, MULCHER OR ENTIRE GRASS COLLECTOR IN PLACE.

4164269

⚠ WARNING



- ROTATING PARTS.
- DO NOT OPERATE WITH COVER REMOVED

2000577

ATTACHING MOWER TO TRACTOR:

- Operate latch control to open hitch latches.
- Drive tractor into position aligning the quick hitch.
- Be sure both latches engage fully and are placed in the locked position.
- **Stop engine!** Do not attempt to install drive belt with engine running.
- Release idler assembly to facilitate easy installation of the drive belt.
- Put belt over drive pulleys and engage or adjust idler assembly.
(See Power Unit Operator's Manual for PTO belt tension adjustments.)
- Set mower to desired cutting height.
- Start engine and engage PTO at low engine r.p.m. to prevent shock load on mower components.
- Mow with front lift lever in "FLOAT" position only.

STEINER BELT CHART

MODEL	440 "B"
Tractor PTO Belt	4166636 5LX44
MD, MX. Rotary mowers	81-B041
RC466 Rough Cut Mower	81-B041
PB100 Power Blower	81-B041
PB200 Power Blower	81-B041
RS350 Rotary Sweeper	81-B041
RS454 Rotary Sweeper	81-B046
SB448 Snowblower	105803 or 4165834
SB454 Snowblower	105803 or 4165834
SC101 Stump Cutter	81-B044
TH300 Trencher	81-B050
TL348 Tiller	81-B041
VA242 Vertical Auger	N/A
Rough Cut 75-71300	4169475

REAR WEIGHT REQUIREMENTS *If equipped with Cab no weights are required.

The Steiner 440 unit uses four weights based upon average mowing conditions and operator's weight of 150 lbs. The recommendations may vary with the weight of the operator, other accessories, and the mowing conditions. It is the operator's responsibility to determine the correct amount of weight needed to improve stability. All weights must be removed when the mower is removed.

OPERATING PRECAUTIONS

Observe all Safety Decals.

Keep all Shields in place.



Do not operate mower with other persons in the area. Foreign material can be propelled from beneath deck and cause serious injury or death.

Before leaving tractor, move Forward - Reverse control to neutral position, disengage PTO, set parking brake, lower mower deck and stop engine.

Remove key from ignition if maintenance procedures are to be performed or tractor is to be left unattended.

Do not adjust height of cut while blades are engaged.

OPERATING INSTRUCTIONS

Set Height of Cut (HOC). See "Adjustments" to set height of cut on Page 14.

Mow with front lift lever in "FLOAT" position only. Engage PTO at low engine rpm. Mower is designed to operate at full throttle for heavy mowing.

Set mower blade speed with the throttle and control ground speed with the Forward - Reverse control.

Use caution when operating on hills or slopes. Mow up and down hills or slopes whenever possible.

Use slow forward speed and extreme care when mowing dense tall growth and/or woody stems for the first time. Be aware of hidden obstacles, such as rocks or other debris, that could damage the mower.

Do not operate mower with blades missing. This causes an imbalance and may damage deck or components.

MAINTENANCE

Daily maintenance:

- Visual inspection for loose parts and accumulation of grass and dirt.
- Clean accumulation of grass clippings from beneath deck daily for better mowing performance.
- Keep blades sharp. Check the tips of the blades for wear.
- Check all blade mounting bolts for wear and all blades for wear at the attaching holes. If blades are removed, torque blade bolts to 75 ft. lbs with reassembly.

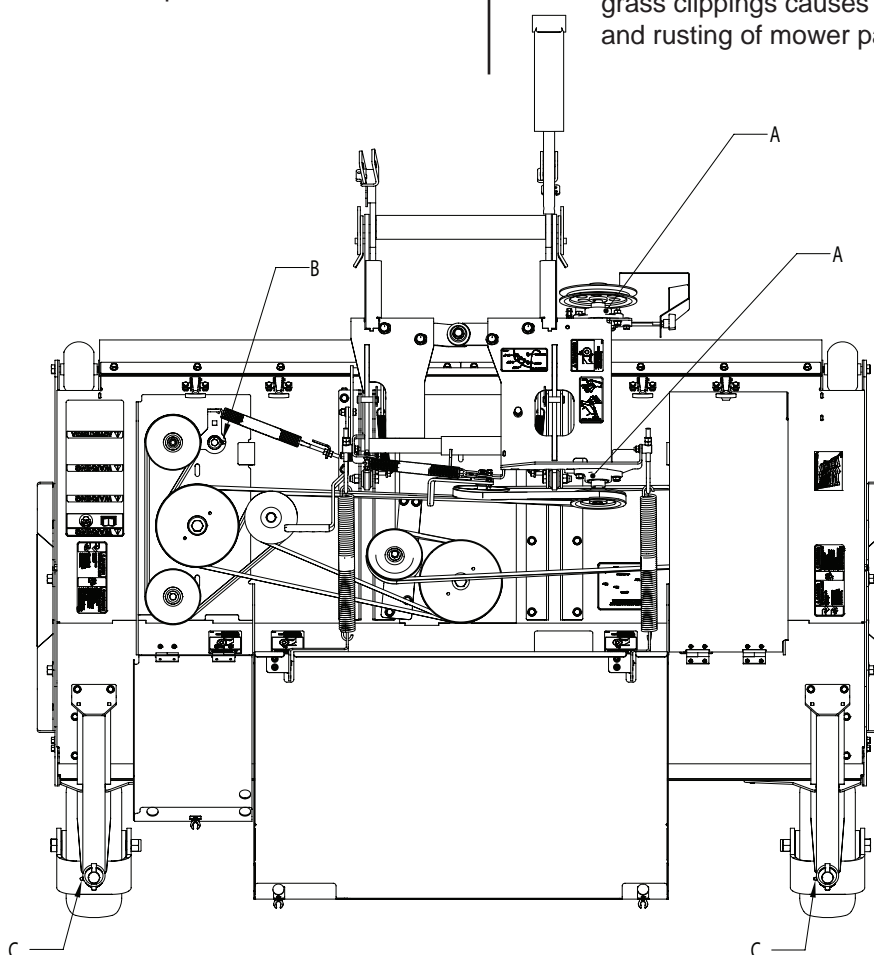
NOTE: If blade attaching holes become worn the blades may strike the deck edges or another blade on the next spindle.

Weekly maintenance:

- In addition to daily maintenance, grease all bearings **A** (2 places)
If equipped with Counterclockwise Belt Kit: spring idler **B** (1 places)
If equipped with caster wheel kit: casters **C** (2 places).
- Check spindle drive belts for proper tension. See Drive Belt Installation on Page 14.

Annual Maintenance:

- In addition to daily and weekly maintenance, remove the drive belts and check for cracks or wear. Rotate each spindle to check for roughness which would indicate bearing wear. Remove and sharpen blades, clean and wash deck prior to storage. The acid in grass clippings causes premature corrosion and rusting of mower parts.



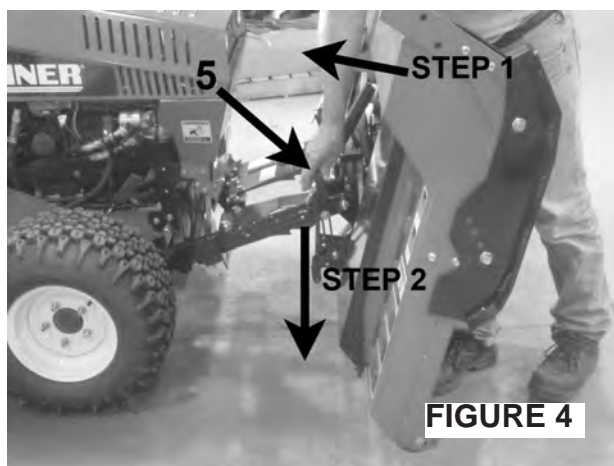
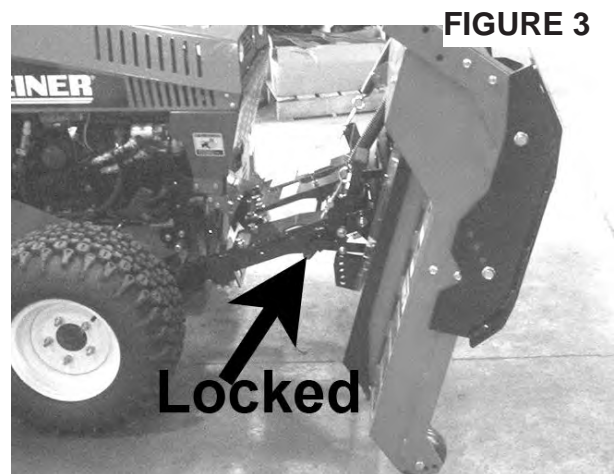
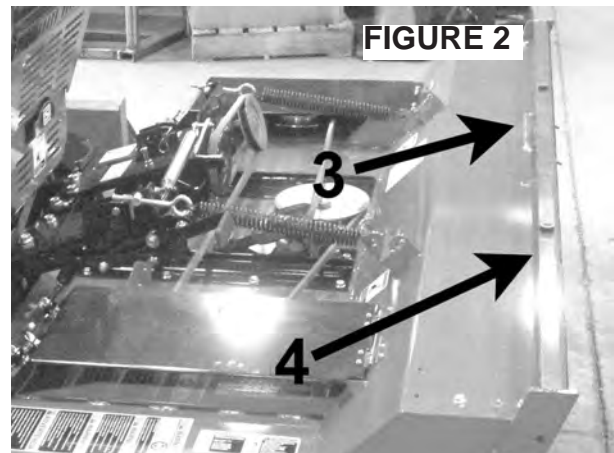
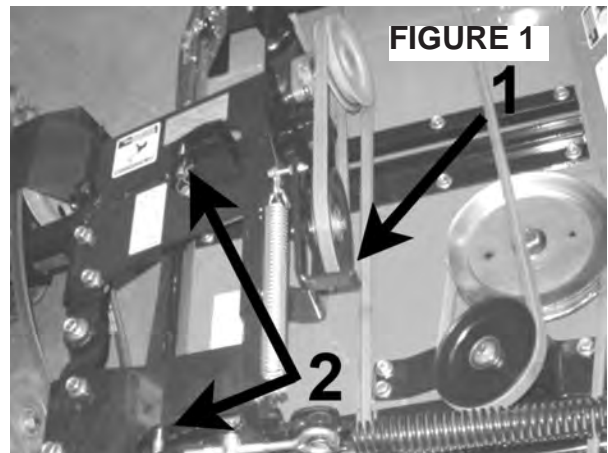
MAINTENANCE AND CLEANING

To raise and lock the deck:

1. Remove the center cover and the belt from the spring loaded idler pulley by pulling the handle 1 toward the drive pulley. **Figure 1.**
2. Start the tractor and raise the front lift to the highest position. Shut off engine and remove key. Wait until all moving parts have stopped.
3. Remove the HOC (Height of Cut) pins 2. **Figure 1.**
4. Manually lift the front of the deck using the handle 3 or the front deck flange 4 (**Figure 2**) until the kick stand rotates into the locked position. **Figure 3.**

To unlock and lower the deck.

1. Slightly push toward the machine on the front of the deck to relieve tension on the kickstand lock. Push the handle 5 straight until the kickstand clears the locking notch. Slowly lower the deck. **Figure 4.**
2. Reinstall the belt. Reinstall the center cover and HOC pins and secure.



ADJUSTMENTS

Sharpening blades:

Be careful while sharpening blades that the corners of the blade do not become rounded at the tips. This reduces the blades overlap and will cause skipping.

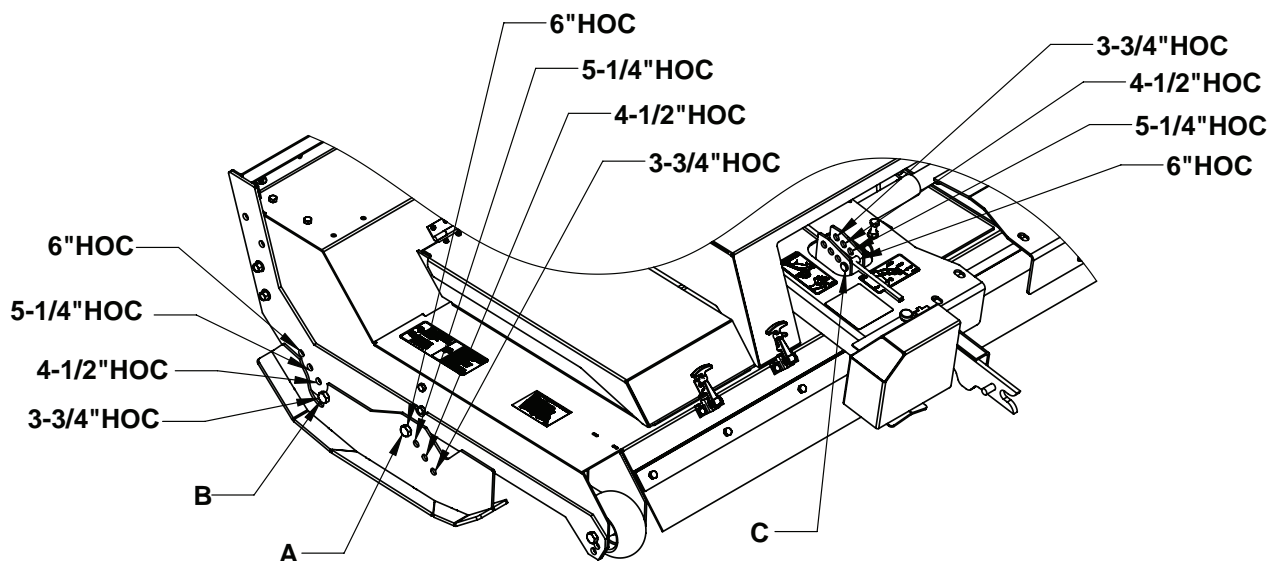
SETTING HEIGHT OF CUT

Set mower to desired cutting height by adjusting at two locations on each side of the mower.

NOTE: Both lift arms and skid shoes must be set to the same height of cut.

1. Lift deck to the highest position.
2. Adjust skid shoe by removing bolts A and B. Reinstall at desired height of cut. Repeat with shoe on opposite side of deck.
3. Adjust the lift arm by removing pin C. Reinstall it at the desired height of cut. Repeat with lift arm on the opposite side of the deck.

NOTE: 7" height of cut can be obtained by ordering the Caster wheel kit 75-71301.

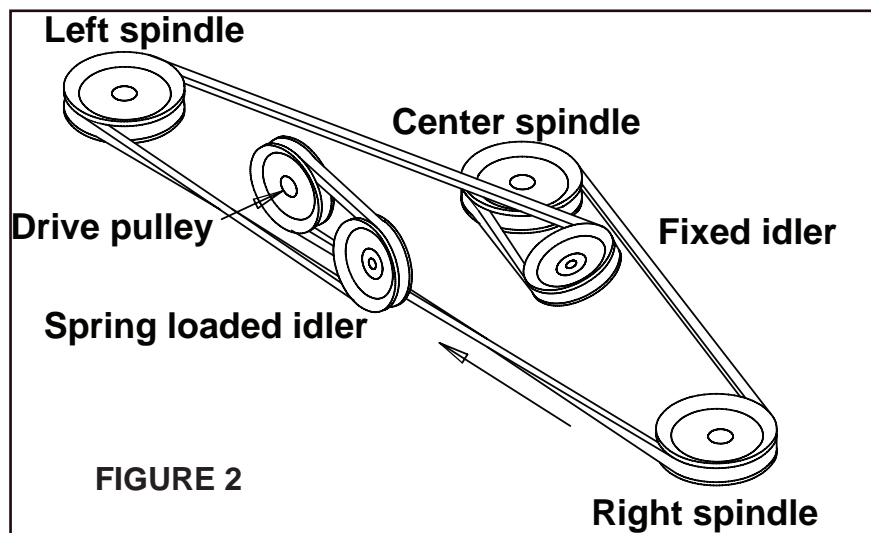
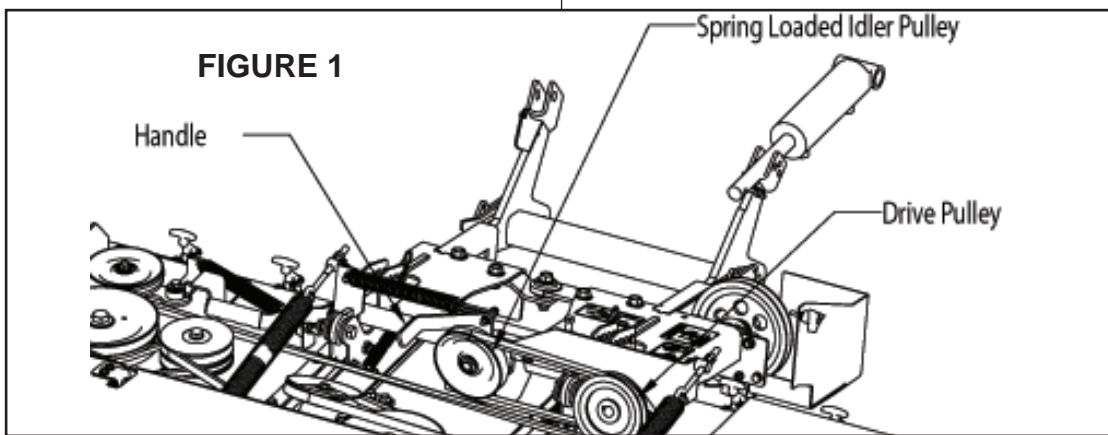


To Remove Belt:

1. Lower deck until it rests on the ground.
2. Remove top shields.
3. Release tension on the spring loaded idler by pulling the handle toward the drive pulley and remove belt. **Figure 1**

To install belt:

1. Install belt by looping it around the left spindle. Loop around the fixed idler then loop around the center spindle. Loop around the right pulley and then around the drive pulley. **Figure 2**
2. Release tension on the spring loaded idler by pulling the handle toward the drive pulley and place belt around the spring loaded idler pulley. **Figure 1**
3. Replace top shields.



TRANSPORTING MOWER

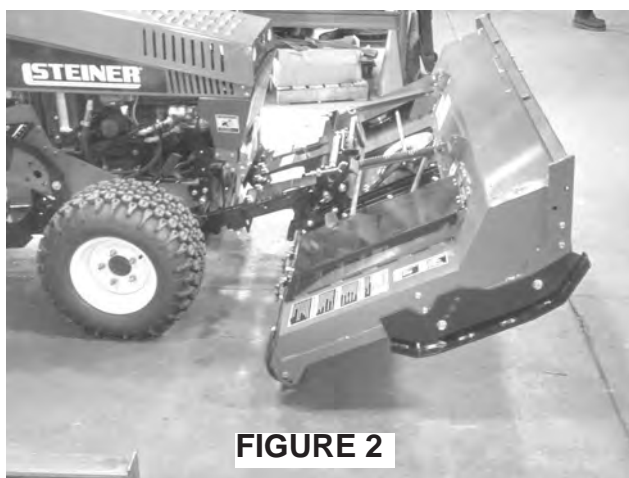
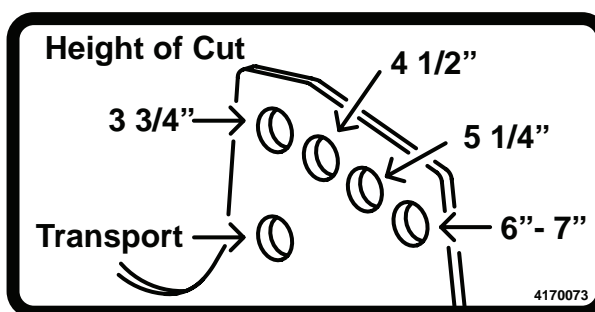
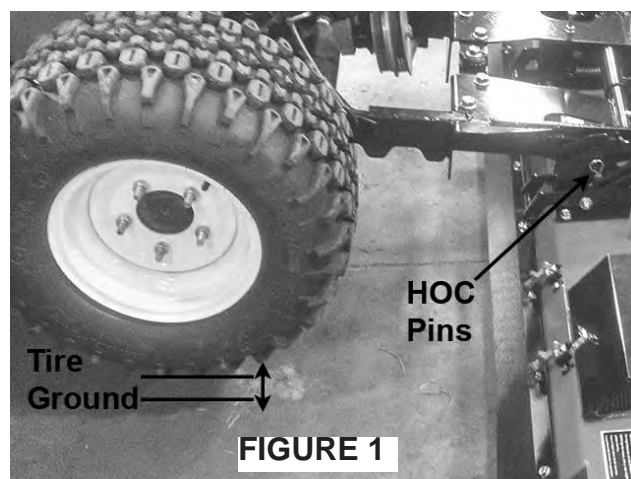
For ease of loading and unloading onto trailers, put the deck in the transport position.

To place the deck in transport position:

1. Remove the center cover and the HOC (Height of Cut) pins.
2. Start the tractor and lower the front lift until it can go no further. Note: The front wheels of the tractor will be off the ground. **Figure 1**
3. Shut off the engine and remove the key. Wait for all moving parts to come to a complete stop. Place the HOC pins in the transport holes and secure.
4. Reinstall the center cover.
5. Start the tractor and raise the front lift, allowing the front wheels to return to the ground. **Figure 2**
6. Continue raising the front lift until it can go no further
7. Load/Unload tractor.

To remove the deck from transport position:
(**Figure 1**)

1. Remove the center cover.
2. Start the tractor and lower the front lift until it can go no further. Note: The front wheels of the tractor will be off the ground.
3. Shut off the engine and remove the key. Wait for all moving parts to come to a complete stop. Remove the HOC pins in the transport holes.
4. Reinstall the center cover.
5. Start the tractor and raise the front lift, allowing the front wheels to return to the ground.
6. Continue raising the front lift until it can go no further.
7. Reinstall the HOC pins and center cover and secure.



**ROUGH
CUT
MOWER**

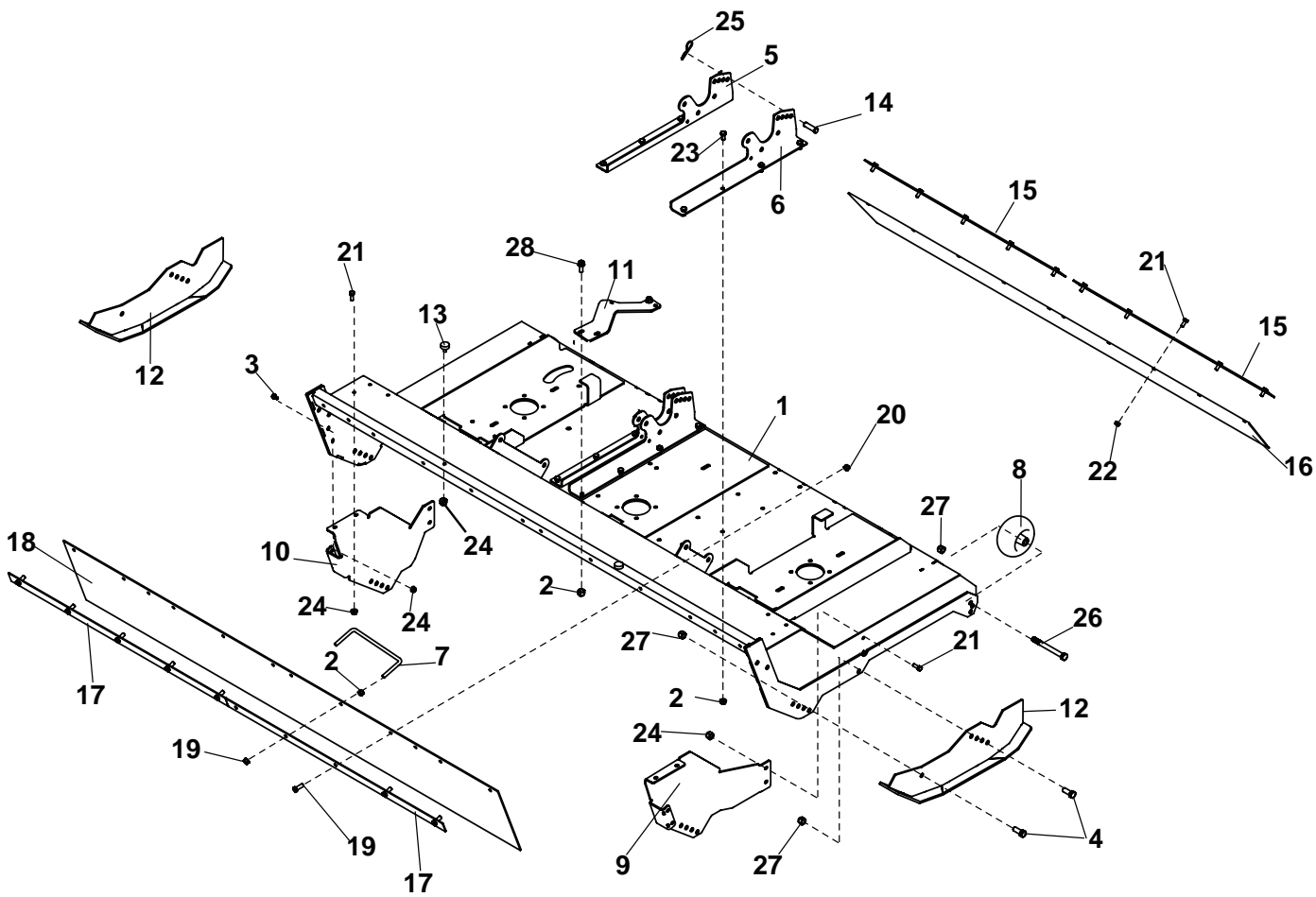


PARTS SECTION

DECK ASSEMBLY

ROUGH
CUT
MOWER

FIGURE 1



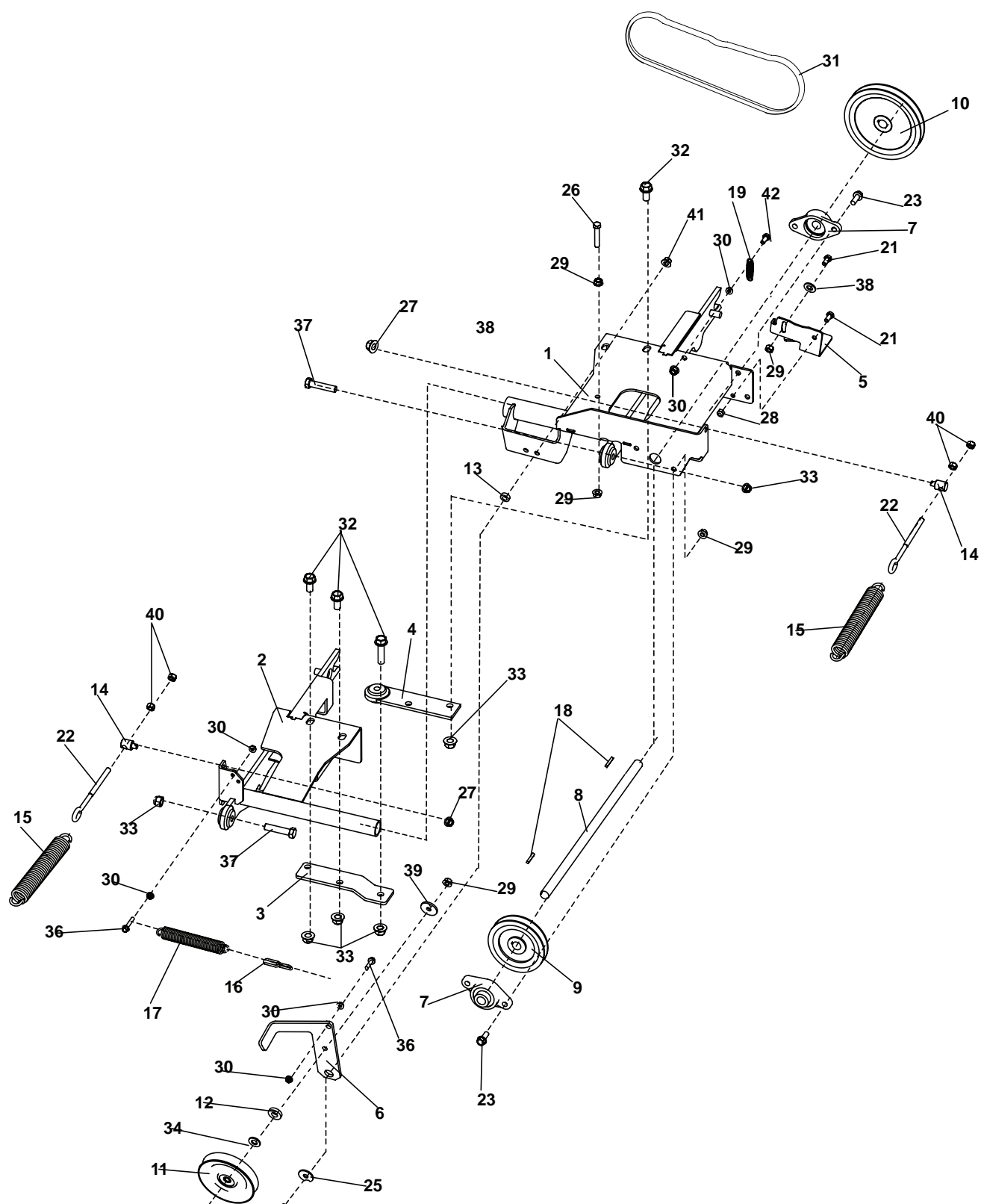
ROUGH CUT MOWER

DECK ASSEMBLY

FIGURE 1

ITEM	PART NO.	DESCRIPTION	QTY	ITEM	PART NO.	DESCRIPTION	QTY
1	4170941	S-DECK, ROUGH CUT	1				
2	64141-4	NUT-WLF 3/8-16	21				
3	64262-007	BLT-FLG HD 5/16-18 X 1	4				
4	64262-016	BLT-FLG HD 1/2-13 X 1-1/2	4				
5	4170699.7	BRKT-DECK,PIVOT SPRT LH	2				
6	4170700.7	BRKT-DECK,PIVOT SPRT RH	2				
7	4169512	ROD-HANDLE, 3/8-16 THRD	1				
8	4168561	ROLLER-5X2.75 CENTERED	2				
9	4169267.7	BAFFLE-DECK LH	1				
10	4169268.7	BAFFLE-DECK RH	1				
11	4170017.7	BRKT-IDLER MOUNT	1				
12	4169089.7	WLDMT-SKID, DECK SPRT	2				
13	4143354	BUMPER SEAT MOUNTING	2				
14	64188-32	PIN-CLEVIS 1/2 X 1-3/4	2				
15	4169037.7	PLT-FASTENER,REAR	2				
16	4169021	FLAP-RUBBER,REAR	1				
17	4169036.7	PLT-FASTENER,FRONT	2				
18	4169020	FLAP-RUBBER,FRONT	1				
19	64139-24	BLT-WLF 3/8-16 X 1	8				
20	64229-03	NUT-NYLON LOCK 3/8-16	10				
21	64139-08	BLT-WLF 5/16-18X3/4	18				
22	64229-02	NUT-NYLON LOCK 5/16-18	10				
23	64139-21	BLT-WLF 3/8-16X3/4	15				
24	64141-6	NUT-WLF 5/16-18	14				
25	64168-1	COTTER-HAIRPIN .120x2-3/8	2				
26	64123-135	BLT-HEX 1/2-13X5	2				
27	64229-05	NUT-NYLON LOCK 1/2-13	6				
28	64262-011	BLT-FLG HD 3/8-16 X 1	4				

FIGURE 2



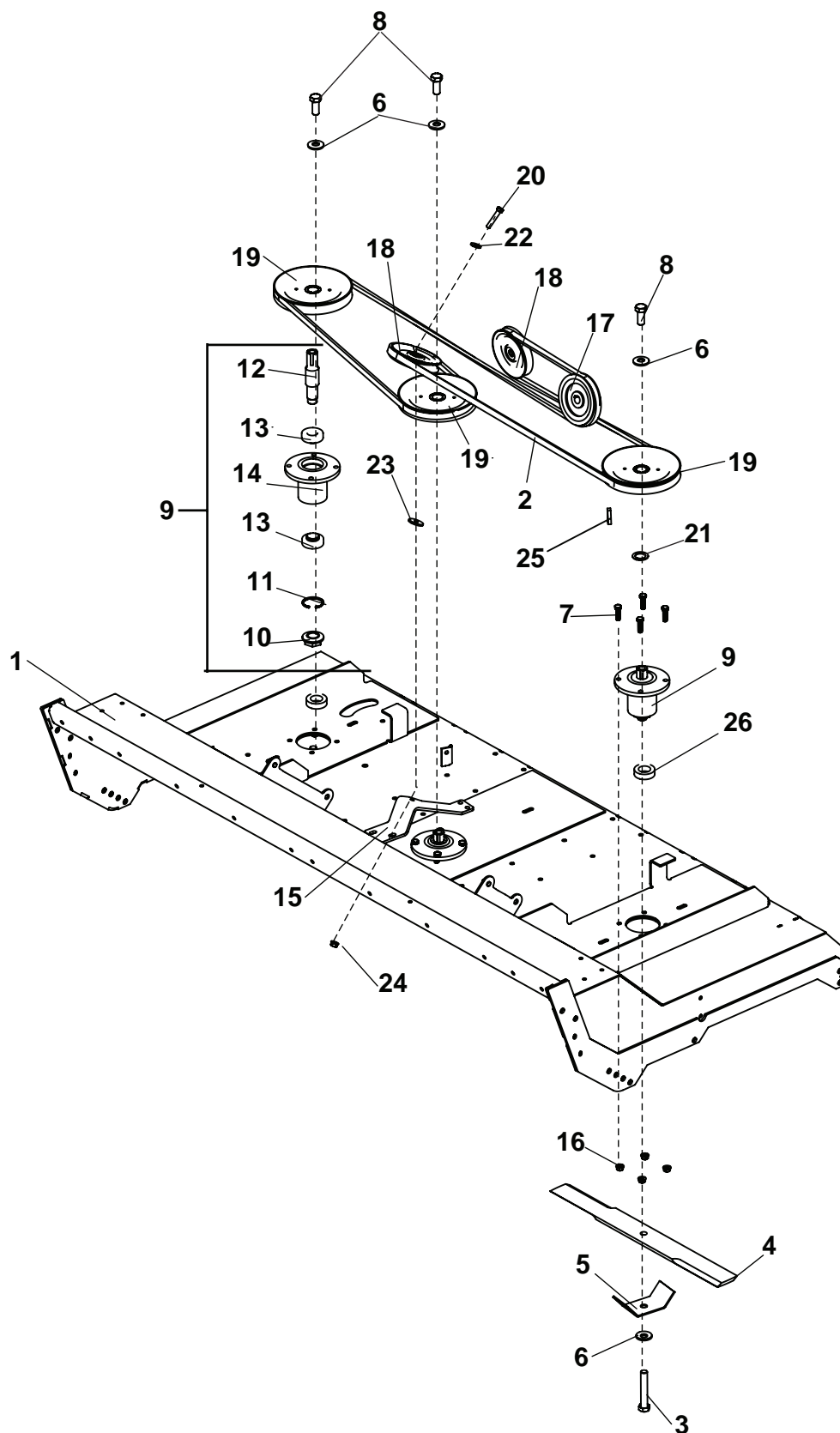
ROUGH CUT MOWER

PTO, DRIVE SHAFTS, & LIFT ARMS

FIGURE 2

ITEM	PART NO.	DESCRIPTION	QTY	ITEM	PART NO.	DESCRIPTION	QTY
1	4170942	S-LIFT ARM,LH	1				
2	4169022.7	WLDMT-LIFT ARM,RH	1				
3	4170584.7	WLDMNT-LINK,LIFT ARM LH	1				
4	4170583.7	LINK-LIFT ARM,RH	1				
5	4169413.7	BRKT-BELT GUIDE	1				
6	40-330.7	IDLER ARM MD472	1				
7	55-FB23012	FLANGE BEARING	2				
8	80-228	DRIVE SHAFT	1				
9	83-BK5212	PULLEY-4.95 OD X .75 BORE	1				
10	83-BK7212	PULLEY-6.75X .75 BORE	1				
11	83-034	IDLER PULLEY	1				
12	99-B12	SPACER-.53 X 1.13 X 3GA	1				
13	85-B29	BUSHING .406 X.740 X.258	1				
14	4169511	SWIVEL-3/8 THRD MNT	2				
15	4165675	SPRING-DECK LIFT	2				
16	56-055-02	CHAIN #2 STRAIGHT LINK	1				
17	41-051	SPRING EXT.	1				
18	64164-11	KEY-3/16X1-1/4 SQ	2				
19	2308065	SPRING-EXTENSION	1				
20	64262-011	BLT-FLG HD 3/8-16 X 1	1				
21	64123-54	BLT-HEX 5/16-18 X .75	2				
22	64158-10	EYE BOLT 3/8-16X5.67 GAP	2				
23	64139-24	BLT-WLF 3/8-16 X 1	4				
24	64123-100	BLT-HEX 3/8-16 X 2-1/4	1				
25	64-799	WASHER 13/32 ID X 1-9/32	1				
26	64123-67	BLT-HEX 3/8-16 X 2	1				
27	64268-02	NUT-FL NYLON LCK 5/16-18	2				
28	64229-02	NUT-NYLON LOCK 5/16-18	2				
29	64141-4	NUT-WLF 3/8-16	7				
30	64141-2	NUT-WLF 1/4-20	6				
31	4169475	BELT-B44 RAW EDGE	2				
32	64139-22	BLT-WLF 1/2-13X1	5				
33	64268-05	NUT-FL NYLON LOCK 1/2-13	5				
34	64163-67	WSHR-.516X1X12GA	1				
35	64163-31	WSHR 25/64X1X12	1				
36	64262-005	BLT-FLG HD 1/4-20 X 1-1/2	2				
37	64123-259	BOLT, 1/2-13 X 2_1/4	2				
38	64163-55	WSHR .328X.75X14 GA	2				
39	64163-53	WSHR .391X1.50X9GA	1				
40	64025-05	NUT-3/8-16 HEX	4				
41	64268-03	NUT-FL NYLON LOCK 3/8-16	1				
42	64262-003	BLT-FLG HD 1/4-20 X 1	1				

FIGURE 3



ROUGH CUT MOWER

SPINDLES, PULLEYS & BLADES

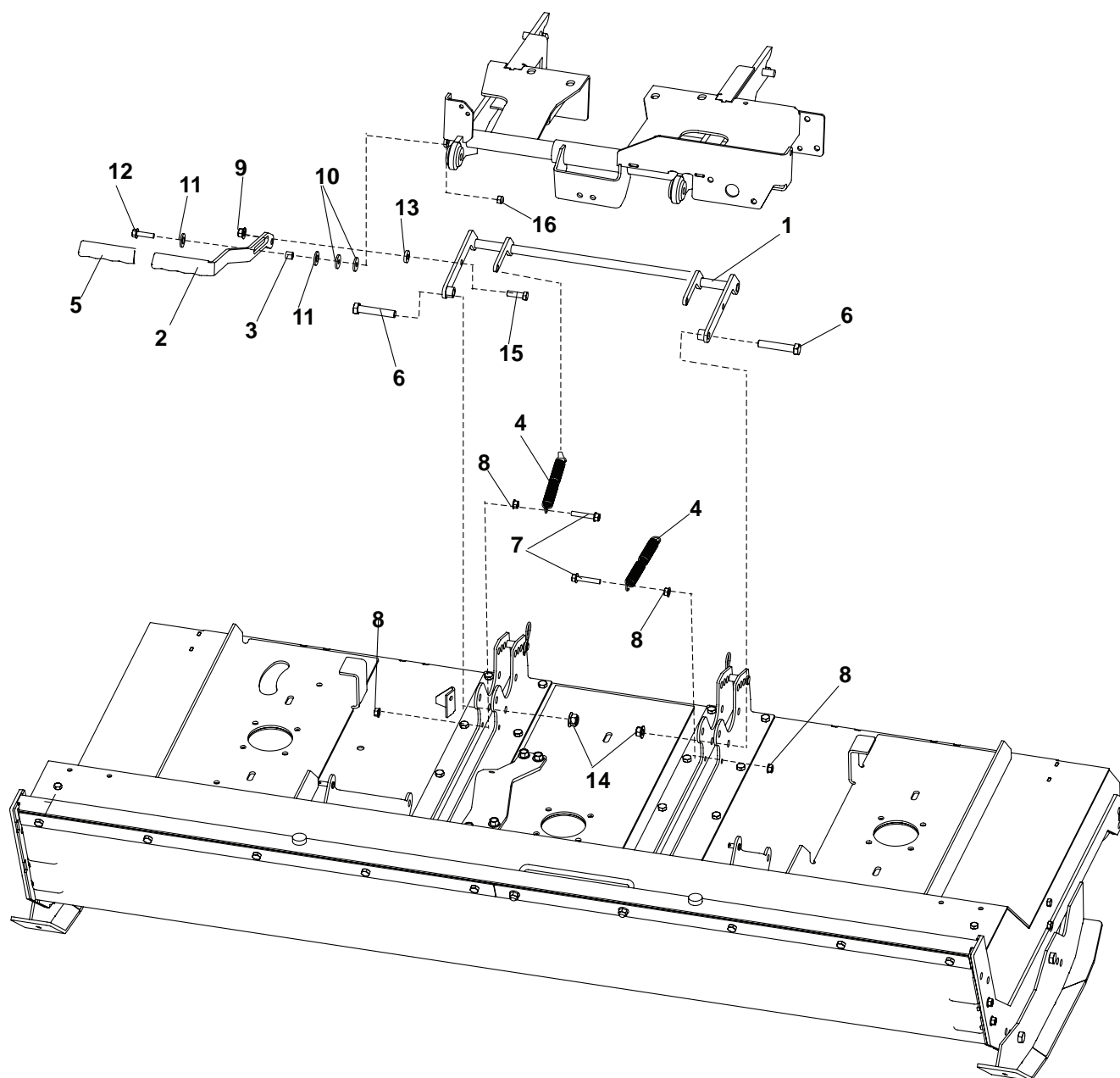
FIGURE 3

ITEM	PART NO.	DESCRIPTION	QTY	ITEM	PART NO.	DESCRIPTION	QTY
1	4170941	S-DECK, ROUGH CUT	1				
2	4169054	BELT-DRIVE,B 180 (ISH)	1				
3	64123-187	BLT-HEX 5/8-18X3-3/4	3				
4	C100584-02	BLADE	3				
5	4169011.7	BRKT-GUARD,SPINDLE	3				
6	64209-03	SPRING WASHER.67 ID	6				
7	64123-16	BLT-HEX 3/8-16X1-1/4	12				
8	64123-208	BLT-HEX 5/8-18X1-1/2	3				
9	4169313	ASSY-TOP MNT SPINDL	3				
10	38315	NUT-SPINDLE	3				
11	64144-38	SNAP RING	3				
12	2183070-02	SHAFT-SPINDLE	3				
13	4167554-01	BEARING-BALL W/SHLDR	6				
14	2191000	SPINDLE HOUSING	3				
15	4170017.7	BRKT-IDLER MOUNT	1				
16	64141-4	NUT-WLF 3/8-16	12				
17	83-BK5212	PULLEY-4.95 OD X .75 BORE	1				
18	83-034	IDLER PULLEY	2				
19	4169578	PULLEY-SPLIT, 7.422OP X 1.03	3				
20	64123-67	BLT-HEX 3/8-16 X 2	1				
21	64163-64	WSHR 1.015X1.500X14GA	3				
22	64163-31	WSHR 25/64X1X12	1				
23	64163-82	WSHR-.406X1.44X9GA	1				
24	64141-4	NUT-WLF 3/8-16	1				
25	64164-12	KEY-1/4X1 SQ	3				
26	4118314-01	SPACER-BLADE	3				

DECK LIFT LOCK

ROUGH CUT MOWER

FIGURE 4



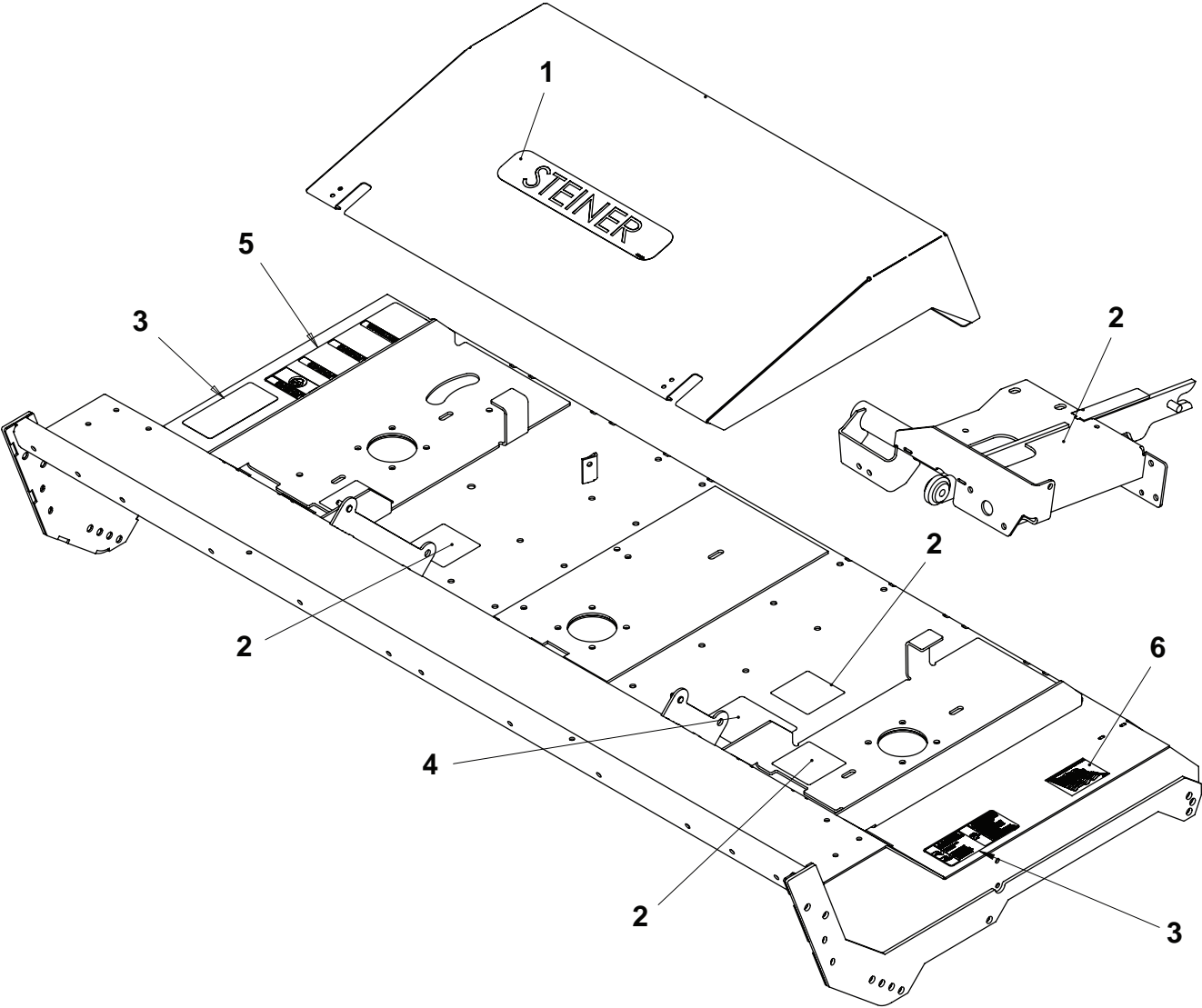
ROUGH CUT MOWER

DECK LIFT LOCK

FIGURE 4

ITEM	PART NO.	DESCRIPTION	QTY	ITEM	PART NO.	DESCRIPTION	QTY
1	4169032.7	WLDMT-KICKSTAND	1				
2	4169356.7	BRKT-HANDLE, KICKSTAND	1				
3	4167023	SPACER, .50.D. X .470LG	1				
4	38219	SPRING-TENSION	2				
5	38404-03	GRIP-CONTROL LEVER 3.88	1				
6	64123-125	BLT-HEX 1/2-13 X 2-3/4	2				
7	64262-019	BLT-FLG HD 5/16-18 X 1-3/4	2				
8	64141-6	NUT-WLF 5/16-18	4				
9	64268-03	NUT-FL NYLON LOCK 3/8-16	1				
10	64163-29	WSHR-21/64 X 1 X 11GA	2				
11	64163-67	WSHR-.516X1X12GA	2				
12	64262-008	BLT-FLG HD 5/16-18 X 1-1/4	1				
13	64163-46	WSHR.383/.393X.88X7GA	1				
14	64151-37	NUT-HEX,1/2-13 NYL INRT	2				
15	64123-16	BLT-HEX 3/8-16X1-1/4	1				
16	64229-02	NUT-NYLON LOCK 5/16-18	1				

FIGURE 5



ROUGH CUT MOWER

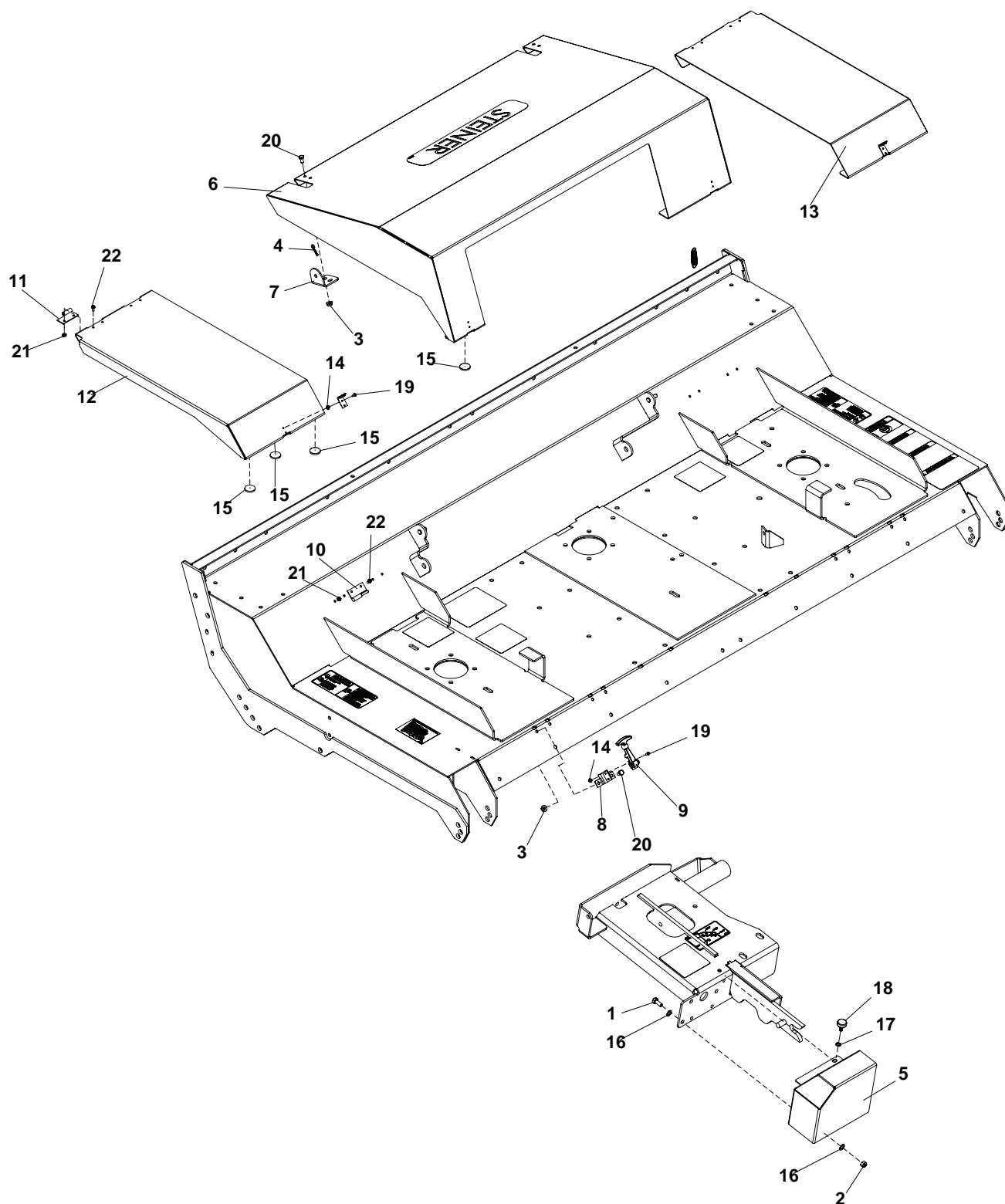
DECALS

FIGURE 5

ITEM	PART NO.	DESCRIPTION	QTY	ITEM	PART NO.	DESCRIPTION	QTY
1	4158620	LABEL-STEINER	1				
2	2000577	LABEL-WARNING	5				
3	4164269	LABEL-WARNING THROWN	2				
4	00-129	DECAL, BLET INSTALLATION	1				
5	4166628	DECAL, WARNING	1				
6	4116761	LABEL-MADE IN USA	1				
7*	4170207	DECAL-HOC, SKID	1				
8*	4170073	DECAL-HEIGHT OF CUT	1				

*NOT ILLUSTRATED

FIGURE 6



ROUGH CUT MOWER

SHIELDS

FIGURE 6

ITEM	PART NO.	DESCRIPTION	QTY	ITEM	PART NO.	DESCRIPTION	QTY
1	64123-54	BLT-HEX 5/16-18 X .75	1				
2	64229-02	NUT-NYLON LOCK 5/16-18	1				
3	64141-2	NUT-WLF 1/4-20	12				
4	64168-2	COTTER-HAIRPIN.08X1.19	2				
5	4169132.7	BRKT-GUARD,PULLEY	1				
6	4169105.17	COVER-DECK,CENTER	1				
7	4169290.17	BRKT-HINGE,COVER	2				
8	64-900.7	BRACKET TOP LATCH	4				
9	47-090	LATCH	4				
10	4166811-1.17	HINGE-LIFT OFF MALE	4				
11	4166811-2.17	HINGE-LIFT OFF FEMALE	4				
12	4169288.7	COVER-SIDE,LH	1				
13	4169289.7	COVER-SIDE, RH	1				
14	64025-26	NUT-HEX #6-32 KEPS	16				
15	4168941	BUMPER-FELT, 1IN	8				
16	64163-04	WSHR	2				
17	99-G06	WASHER 1/4IN	1				
18	47-077	KNOB SMALL W/STUD	1				
19	64152-80	SCREW-PAN HD 6-32X3/8	16				
20	64123-49	BLT-HEX 1/4-20X1/2	12				
21	64025-29	NUT-HEX #8-32 KEPS	16				
22	64152-79	SCREW-HEX 8-32X3/8	16				

SCHILLER GROUNDS CARE, INC.
ONE BOB-CAT LANE
P.O. BOX 469
JOHNSON CREEK, WI 53038
920-699-2000
www.schillergc.com



©Schiller Grounds Care, Inc. 2010