

MAN 4170938
Rev. A 06-2014



MODEL:
75-71305
FLEX DECK MOWER -80"



PARTS MANUAL

CALIFORNIA

Proposition 65 Warning

Diesel engine exhaust and some of its constituents are known to the State of California to cause cancer, birth defects and other reproductive harm.

⚠ WARNING

The engine exhaust from this product contains chemicals known to the State of California to cause cancer, birth defects or other reproductive harm.

Californie Proposition 65 Avertissement

Les échappements des moteurs diesel et certains de leurs composés sont reconnus par l'Etat de Californie pour être cancérigènes, provoquer des défauts congénitaux et d'autres dangers en matière de reproduction.

California Advertencia

⚠ AVERTISSEMENT

L'émission du moteur de ce matériel contient des produits chimiques que l'Etat de Californie considère être cancérigènes, provoquer des défauts congénitaux et d'autres dangers en matière de reproduction.

de la Proposicion 65

El estado de California hace saber que los gases de escape de los motores diesel y algunos de sus componentes producen cáncer, defectos de nacimiento y otros daños en el proceso de reproducción humana.

⚠ ADVERTENCIA

El estado de California hace saber que los gases de escape de este producto contienen productos químicos que producen cáncer, defectos de nacimiento y otros daños en el proceso de reproducción humana.

CALIFORNIA

Proposition 65 Warning

Battery posts, terminals, wiring insulation, and related accessories contain lead and lead compounds, chemicals known to the State of California to cause cancer and birth defects or other reproductive harm.

WASH HANDS AFTER HANDLING.

FLEX DECK MOWER

IMPORTANT MESSAGE

Thank you for purchasing this Schiller Grounds Care, Inc. product. You have purchased a world class product, one of the best designed and built anywhere.

This product comes with an Owner/Operator's Manual. The useful life and good service you receive from this product depends to a large extent on how well you read and understand this manual. Treat this product properly and adjust it as instructed, and it will give you many years of reliable service.

See a Schiller Grounds Care, Inc. dealer for any service or parts needed. Schiller Grounds Care, Inc. service ensures that you continue to receive the best results possible from Schiller Grounds Care, Inc. products. You can trust Schiller Grounds Care, Inc. replacement parts because they are manufactured with the same high precision and quality as the original parts.

Schiller Grounds Care, Inc. designs and builds its equipment to serve many years in a safe and productive manner. For longest life, use this product only as directed in the manual, keep it in good repair and follow safety warnings and instructions. You'll always be glad you did.

Schiller Grounds Care, Inc.
One Bob Cat Lane
Johnson Creek, WI 53038-0469

TABLE OF CONTENTS	FIGURES	PAGE
DESCRIPTION / SPECIFICATIONS / BELT CHART		4
SAFETY		5-8
PARTS SECTION		9
MOWER DECALS	FIGURE 1	10, 11
BELTS & DECK WELDMENTS ASSEMBLY	FIGURE 2	12, 13
DECK 1 WELDMENT HARDWARE & COVERS	FIGURE 3	14, 15
SPINDLE & PULLEYS	FIGURE 4	16, 17
SPINDLE HOUSING	FIGURE 5	18, 19
DECK 1 WELDMENT IDLER ASSEMBLY	FIGURE 6	20, 21
DECK 1 WELDMENT WHEEL YOKE ASSEMBLY	FIGURE 7	22, 23
DECK 2 WELDMENT & HARDWARE	FIGURE 8	24, 25
DECK 2 WELDMENT COVERS	FIGURE 9	26, 27
DECK 3 WELDMENT & HARDWARE	FIGURE 10	28, 29
DECK 3 TENSIONER ASSEMBLY	FIGURE 11	30, 31
DECK 3 WELDMENT COVERS	FIGURE 12	32, 33
DECK 3 TRAP DOORS	FIGURE 13	34, 35
ANTISCALP ROLLER ASSEMBLY	FIGURE 14	36, 37
DECK 4 WELDMENT, HARDWARE & COVERS	FIGURE 15	38, 39
EXTENDED CHUTE ASSEMBLY	FIGURE 16	40, 41
REAR WHEEL ASSEMBLYS	FIGURE 17	42, 43
PIVOTING WHEEL ASSEMBLY	FIGURE 18	44, 45
9 X 3.5 WHEEL ASSEMBLY	FIGURE 19	46, 47
DECK LIFT CYLINDER ASSEMBLY	FIGURE 20	48, 49
HOSE ASSEMBLY AND LINK ROD	FIGURE 21	50, 51
FLEX LIFT ARM ASSEMBLY	FIGURE 22	52, 53
MULCHING BAFFLE KIT	FIGURE 23	54, 55
WIRE HARNESS ASSEMBLIES	FIGURE 24	56, 57

DESCRIPTION / SPECIFICATIONS

FLEX DECK MOWER

DESCRIPTION

The Flex Deck is designed specifically for finish mowing applications. One of the unique benefits of the unit's cutting system is its ability to float over contours that are impossible for other wide-area mowers to cut accurately. The Flex Deck offers a high level of maneuverability.

Although the Flex Deck is an industrial-quality mower, do not attempt to use it to cut extremely long grass or areas heavy with brush or debris.

SPECIFICATIONS

Overall Width 94" w/ chute down
Mower Drive PTO Belt
Spindles Five cast iron housings
Cutting Width 80"
Cutting Height 1" to 4-1/2"
Discharge Side
Weight 430 lbs.

STEINER BELT CHART

MODEL	440 "B"
Tractor PTO Belt	4166636 5LX44
MD, MX. Rotary mowers	81-B041
RC466 Rough Cut Mower	81-B041
PB100 Power Blower	81-B041
PB200 Power Blower	81-B041
RS350 Rotary Sweeper	81-B041
RS454 Rotary Sweeper	81-B046
SB448 Snowblower	105803 or 4165834
SB454 Snowblower	105803 or 4165834
SC101 Stump Cutter	81-B044
TH300 Trencher	81-B050
TL348 Tiller	81-B041
VA242 Vertical Auger	N/A
Rough Cut 75-71300	4169475
Flex Deck-80"	4170368

NOTICE !!!

Unauthorized modifications may present **extreme** safety hazards to operators and bystanders and could also result in product damage.

Schiller Grounds Care, Inc. strongly warns against, rejects and disclaims any modifications, add-on accessories or product alterations that are not designed, developed, tested and approved by Schiller Grounds Care, Inc. Engineering Department. Any Schiller Grounds Care, Inc. product that is altered, modified or changed in any manner not specifically authorized after original manufacture—including the addition of “after-market” accessories or component parts not specifically approved by Schiller Grounds Care, Inc.—will result in the Schiller Grounds Care, Inc. Warranty being voided.

Any and all liability for personal injury and/or property damage caused by any unauthorized modifications, add-on accessories or products not approved by Schiller Grounds Care, Inc. will be considered the responsibility of the individual(s) or company designing and/or making such changes. Schiller Grounds Care, Inc. will vigorously pursue full indemnification and costs from any party responsible for such unauthorized post-manufacture modifications and/or accessories should personal injury and/or property damage result.



This symbol means:
ATTENTION!
BECOME ALERT!

Your safety and the safety of others is involved.

Signal word definitions:

The signal words below are used to identify levels of hazard seriousness. These words appear in this manual and on the safety labels attached to Schiller Grounds Care, Inc. machines. For your safety and the safety of others, read and follow the information given with these signal words and/or the symbol shown above.

DANGER

DANGER indicates an imminently hazardous situation which, if not avoided, **WILL** result in death or serious injury.

WARNING

WARNING indicates a potentially hazardous situation which, if not avoided, **COULD** result in death or serious injury.

CAUTION

CAUTION indicates a potentially hazardous situation which, if not avoided, **MAY** result in minor or moderate injury. It may also be used to alert against unsafe practices or property damage.

CAUTION

CAUTION used without the safety alert symbol indicates a potentially hazardous situation which, if not avoided, **MAY** result in property damage

Schiller Grounds Care, Inc.

One Bobcat Lane
Johnson Creek, WI 53038 U.S.A
Phone: 920-699-2000
Fax: 920-699-3683

MODEL NUMBER

SERIAL NUMBER

MODEL NUMBER: This number appears on sales literature, technical manuals and price lists.

SERIAL NUMBER: This number appears only on your mower. It contains the model number followed consecutively by the serial number. Use this number when ordering parts or seeking warranty information.

GENERAL SAFETY

- Read and understand the owner’s manual, before attempting to operate this machine.
- Operate all controls from the operator’s seat, (if so equipped). **NO RIDERS.**
- Keep all shields in place and safety switches adjusted properly.
- Do not leave equipment unattended. STOP the engine and remove the key (if so equipped).
- Only allow responsible adults, who are familiar with the instructions, to operate the machine. Do not allow minors or the inexperienced to operate this machine.
- Never allow anyone to operate or service this machine while under the influence of alcohol or drugs.
- Keep people and pets a safe distance away from machines using power driven attachments. Injury could result from flying debris.
- Wear all the necessary protective clothing and personal safety devices to protect your head, eyes, ears, hands, and feet.
- Operate the machine only in daylight or in good artificial light.

SAFE OPERATION PRACTICES FOR MOWERS



This cutting machine is capable of amputating hands and feet and throwing objects. Failure to observe the following safety instructions could result in serious injury or death.

GENERAL OPERATION

1. Read, understand, and follow all instructions in the manual and on the machine before starting.
2. Only allow responsible adults, who are familiar with the instructions, to operate the machine.

3. Clear the area of objects such as rocks, toys , wire, etc., which could be picked up and thrown by the blade.
4. Be sure the area is clear of other people before mowing. Stop the machine if anyone enters the area.
5. Never carry passengers.
6. Do not mow in reverse unless absolutely necessary. Always look down and behind before and while backing.
7. Slow down before turning.
8. Never leave a running machine unattended. Always turn off blades, set parking brake, stop engine, and remove keys before dismounting.
9. Turn off blades when not mowing.
10. Stop engine before unclogging or cleaning under deck.
11. Mow only in good light, keeping away from holes and hidden hazards.
12. Watch for traffic when operating near or crossing roadways.
13. Use extra care when loading or unloading the machine into a trailer or truck.

SLOPE OPERATION

WARNING

Slopes are a major factor related to loss-of-control and tip-over accidents, which can result in severe injury or death. All slopes require extra caution. If you feel uneasy on it, do not mow it.

DO:

- Mow up and down slopes where possible.
- Remove obstacles such as rocks, tree limbs, etc.
- Watch for holes, ruts, or bumps. Uneven terrain could overturn the machine. Tall grass can hide obstacles.
- Use slow speed (low range). Do not attempt to shift while on the slope.
- Follow the manufacturers recommendations for wheel weights or counterweights to improve stability.
- Keep all movement on the slope slow and gradual. Do not make sudden changes in speed or direction.
- Avoid stopping or starting on a slope. If tires lose traction, disengage the blades and proceed slowly straight down the slope.

DO NOT:

- Do not turn on slopes unless necessary, and then, turn slowly and gradually downhill, if possible.
- Do not mow drop-offs, ditches, or embankments. The mower could suddenly turn over if a wheel is over the edge of a cliff or ditch, or if an edge caves in.
- Do not mow on wet grass. Reduced traction could cause sliding.
- Do not try to stabilize the machine by putting your foot on the ground.

CHILDREN

WARNING

Tragic accidents can occur if the operator is not alert to the presence of children. Children are often attracted to the machine and the mowing activity. Never assume that children will remain where you last saw them.

1. Keep children out of the mowing area and under the watchful eye of another responsible adult.
2. Be alert and turn machine off if children enter the area.
3. Before and when backing, look behind and down for small children.
4. Never carry children as passengers, even with the blades turned off. They may suddenly fall off and be seriously injured or interfere with safe machine operation.
5. Never allow children to operate the machine.
6. Use extra care when approaching blind corners, shrubs, trees, or other objects that may obscure vision.

SERVICE

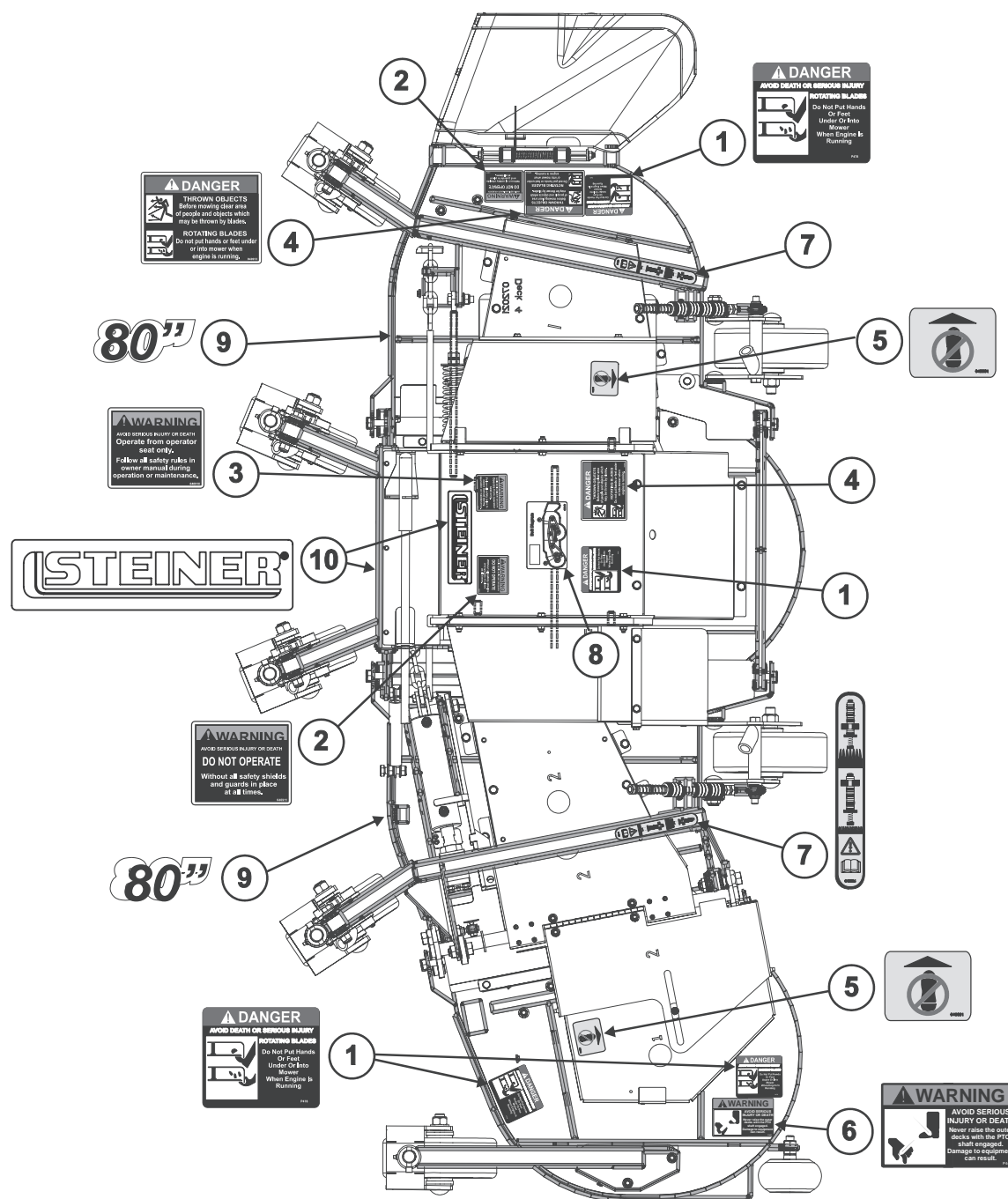
1. Use extra care in handling gasoline and other fuels. They are flammable and the vapors are explosive.
 - a. Use only an approved container.
 - b. Never remove gas cap or add fuel with engine running. Allow engine to cool before refueling. Do not smoke.
 - c. Never refuel or drain the machine indoors.
 - d. Never store the machine or fuel container inside where there is an open flame, such as in a water heater.
2. Never run the machine in a closed area.
3. Keep nuts and bolts, especially blade attachment bolts, tight and keep equipment in good condition.
4. Never tamper with safety devices. Check their proper operation regularly.
5. Keep machine free of grass, leaves, and other debris build-up. Clean up oil or fuel spillage. Allow machine to cool before storing.
6. Stop and inspect the equipment if you strike an object. Repair, if necessary, before restarting.
7. Never make adjustments or repairs with the engine running.
8. Frequently check components and replace with manufacturer's recommended parts, when necessary.
9. Mower blades are sharp and can cut. Wrap the blade(s) or wear gloves, and use extra caution when servicing them.

STORAGE SAFETY

- Stop the engine and allow to cool before storing.
- Drain the fuel tank outdoors only.
- Store fuel in an approved container in a cool, dry place.
- Keep the machine and fuel containers in a locked storage place to prevent tampering and to keep children from playing with them.
- When the machine is to be parked, stored or left unattended, close the fuel valve.
- Do not store the machine or fuel container near heating appliances with an open flame such as a water heater or an appliance with a pilot light.
- Keep gasoline storage area free of grass, leaves and excessive grease to reduce fire hazard.



PARTS SECTION



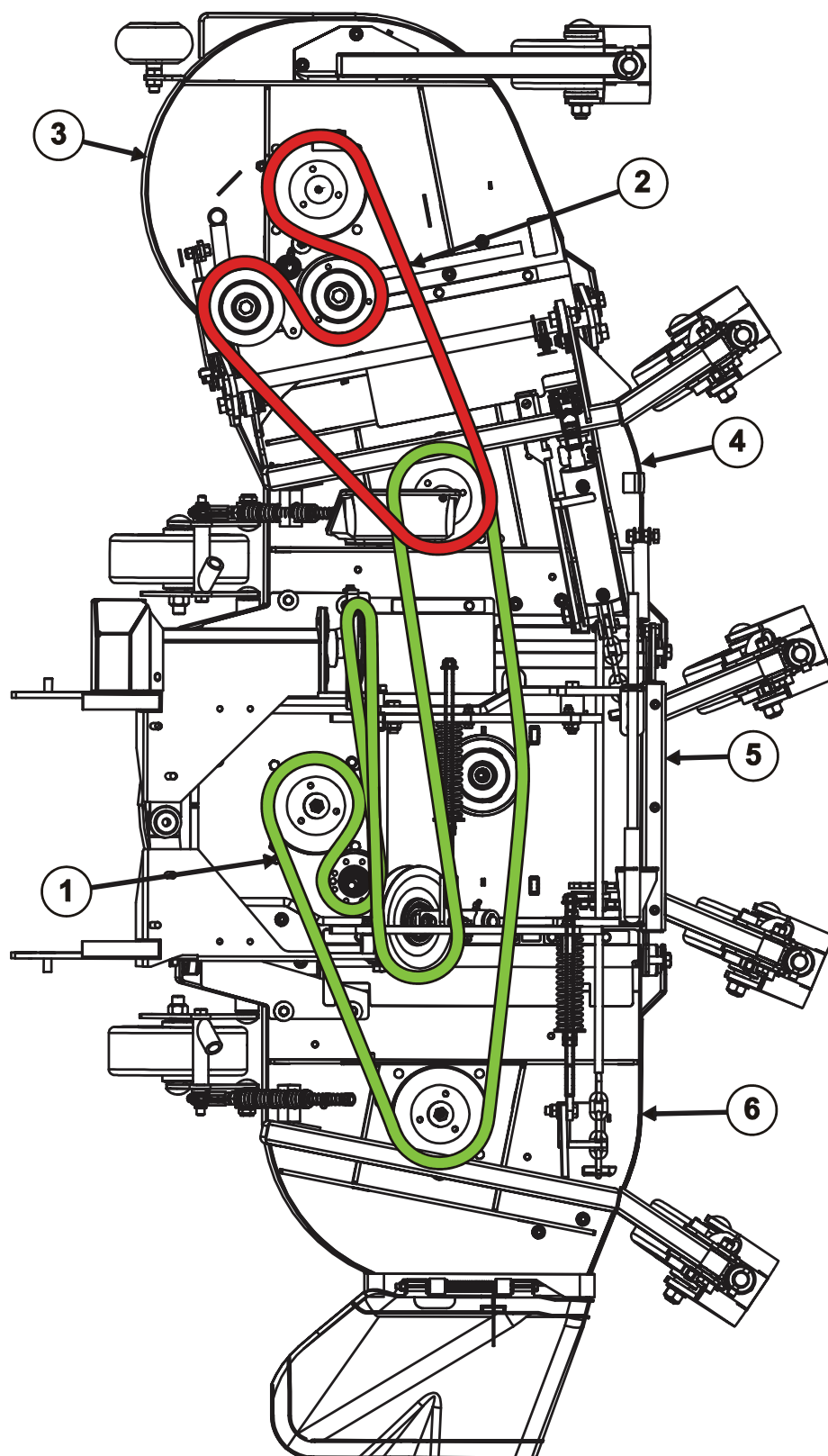
FLEX DECK MOWER

MOWER DECALS

FIGURE 1

ITEM	PART NO.	DESCRIPTION	QTY
1	4170775	DECAL, DANGER - ROTATING BLADES	4
2	4170777	DECAL, WARNING OPERATE FROM SEAT	1
3	4170776	DECAL, WARNING OPERATE WITH GUARDS	2
4	4170778	DECAL, DANGER, THROWN OBJECTS/ARROW	2
5	4170779	DECAL, NO STEP	2
6	4170780	DECAL, WARNING, OUTER DECKS	1
7	4170781	DECAL, EQUIPMENT, HEIGHT ADJ EF	2
8	4170782	DECAL, BELT DIAGRAM 80EFS DECK	1
9	-----	DECAL, 80IN WHITE	2
10	4167312	DECAL, STEINER LOGO	2
11	4170783	DECAL KIT, 80EFS INCLUDES ITEMS 1-10	1

FIGURE 2



FLEX DECK MOWER

BELTS & DECK WLDMNT ASSEMBLY

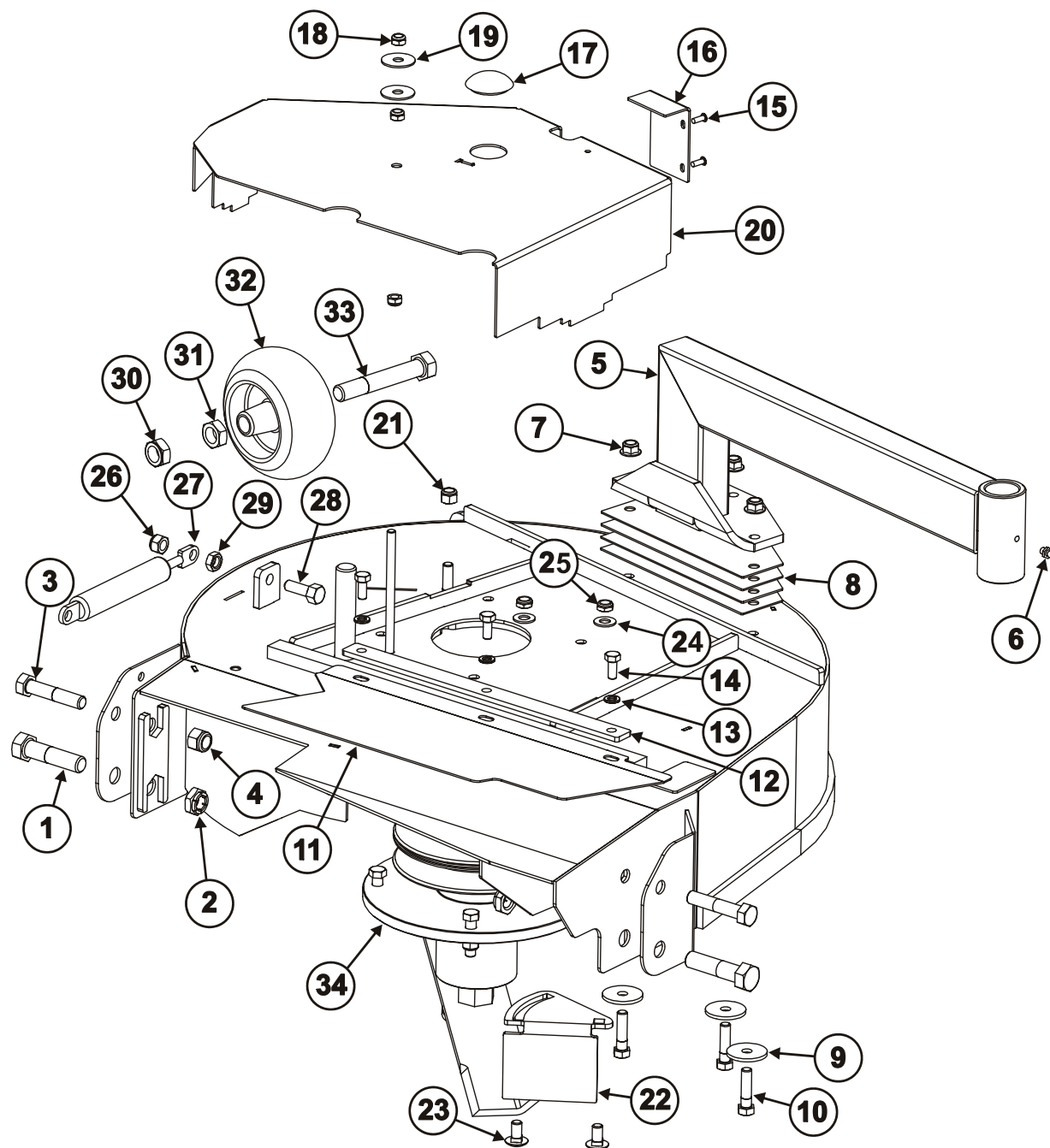
FIGURE 2

ITEM	PART NO.	DESCRIPTION	QTY
1	4170726	BELT, BP180 DRIVE	1
2	4170722	BELT, INSTA-POWER 85830	1
3	4170912	DECK WELDMENT, #1 80EFS	1
4	4170913	DECK WELDMENT, #2 80EFS	1
5	4170914	DECK WELDMENT, #3 80EFS	1
6	4170915	DECK WELDMENT, #4 80EFS	1
7	4170368	BELT-B39 RAW EDGE (NOT ILLUSTRATED)	1

DECK 1 WLDMNT COVERS AND HARDWARE

FLEX DECK MOWER

FIGURE 3



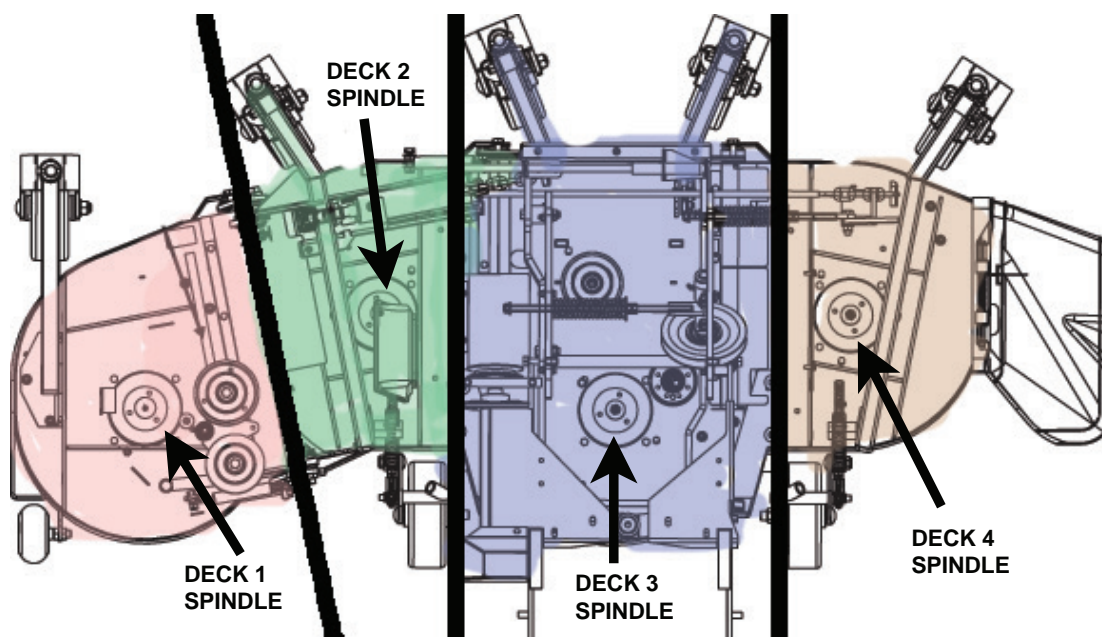
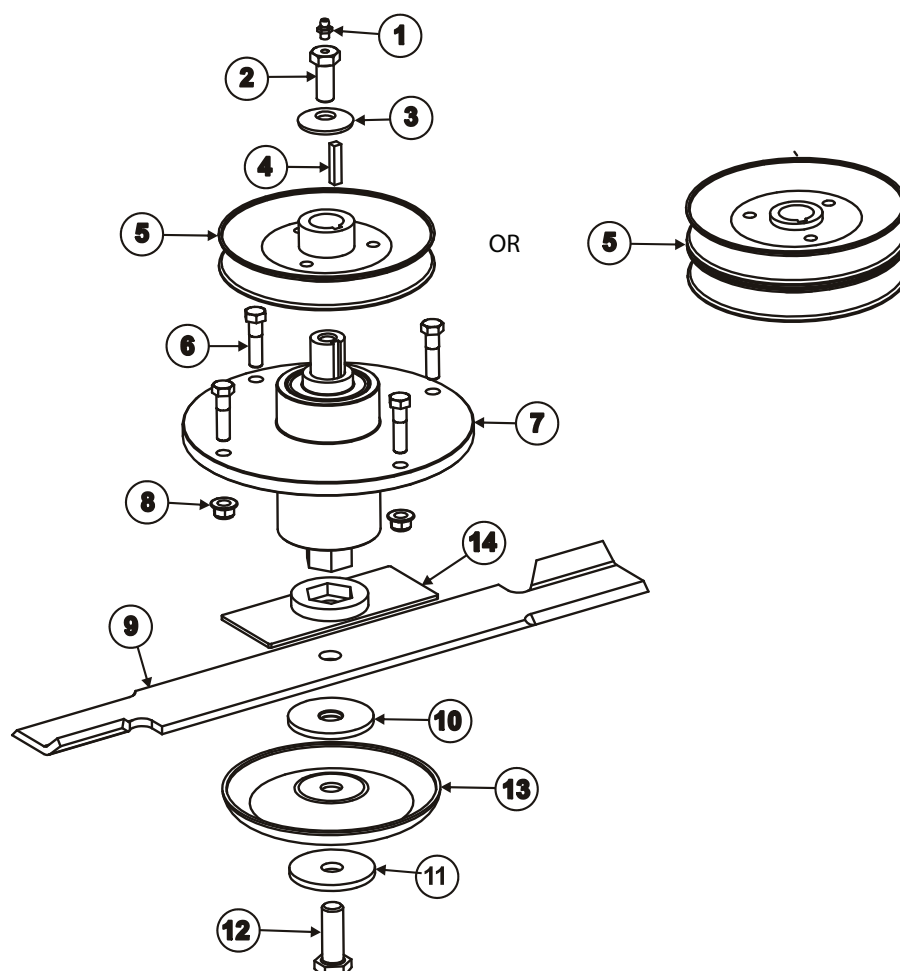
FLEX DECK MOWER

DECK WLDMNT 1 COVERS AND HARDWARE

FIGURE 3

ITEM	PART NO.	DESCRIPTION	QTY
1	64123-168	BOLT, 5/8-11 X 2 1/2" HEX HEAD GRADE 5	2
2	64236-04	NUT, 5/8-11 FLEXLOC	2
3	64123-72	BOLT, 1/2-13 X 2 1/2" HEX HEAD GRADE 5	2
4	64229-05	NUT, 1/2-13 NYL HEX LOCK	2
5	4170735	ROCKER WELDMENT, #1 80EFS	1
6	85010N	FITTING, 1/4-28 STRAIGHT GREASE	1
7	64268-03	NUT, 3/8-16 FLANGED HEX NYLOCK	3
8	4170920	SHIM, 1/5 ROCKER	4
9	4170921	WASHER, 3/8 X 1-1/2 X 1/8 THK HARDENED	3
10	64123-318	BOLT, 3/8-16 X 1-1/2 HEX HEAD GRADE 8	3
11	4170761	DOOR, #1 DECK TRAP	1
12	4170762	CLAMP PLATE, #1 DECK TRAP DOOR	1
13	64006-02	WASHER, 5/16" SPLIT LOCK	3
14	64123-54	BOLT, 5/16-18 X 3/4" HEX HEAD GRADE 5	3
15	64215-03	RIVET, 3/16 DIA X 3/8-1/2 GRIP RANGE POP	2
16	4170763	COVER PLATE	1
17	4170772	COVER, HOLE PLUG 1-3/8	1
18	64151-41	NUT, 5/16-18 NYLON LOCKING JAM	3
19	4170773	WASHER, THROTTLE FRICTION	2
20	4170764	COVER, #1 DECK	1
21	64229-03	NUT, 3/8-16 HEX NYLOC	1
22	4170767	DEFLECTOR PLATE, #5 DECK GRASS	1
23	64018-53	BOLT, 3/8-16 X 3/4" CARRIAGE	2
24	64163-61	WASHER, 3/8" SAE FLAT	2
25	64151-34	NUT, 3/8-16 HALF NYLON LOCK	2
26	64237-10	NUT, M10-1.25 HEX NYLOK	1
27	4170791	DAMPENER, HAND CONTROL	1
28	64206-08	BOLT, M10-1.25 X 30MM HEX HEAD FT 8.8	1
29	64207-10	NUT, M10-1.25 FREE ZINC PLATE	1
30	64151-42	NUT, 5/8-11 JAM NYL LOCK	1
31	64151-45	NUT, 5/8-11 JAM	1
32	4170739	WHEEL, ANTI-SCALP, 5-5/8" HOLE	1
33	64123-234	BOLT, 5/8-11 X 4 HEX HEAD GRADE 5	1
34	-----	SPINDLE ASSEMBLY, ZT 21" D6.3-6.3 (SEE FIGURE 4)	1
35	4170756	DOOR ASSEMBLY, #1 DECK TRAP (INCLUDES ITEMS 11-14)	1
36	4170774	DEFLECTOR ASSEMBLY, GRASS (INCLUDES ITEMS 22-25)	1

FIGURE 4



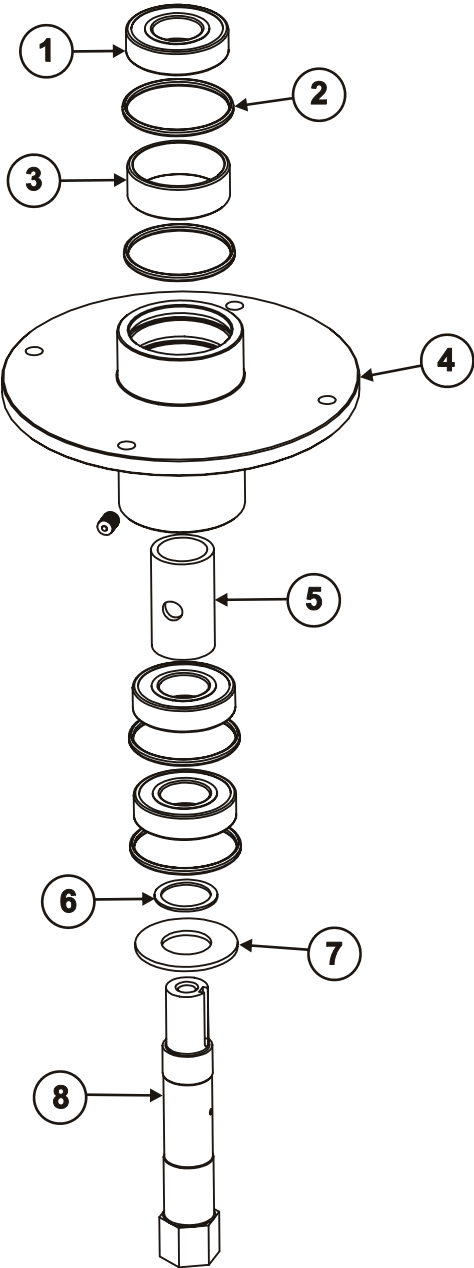
FLEX DECK MOWER

SPINDLES & PULLEYS

FIGURE 4

ITEM	PART NO.	DESCRIPTION	QTY
		SPINDLE ASSEMBLY, ZT 21" D6.3-6.3	1
		PURCHASE PARTS 1-12 SEPARATELY	
1	85010N	FITTING, 1/4-28 STRAIGHT GREASE	1
2	4170740	BOLT, SPINDLE SINGLE PULLEY (USED ON DECK 1, DECK 3, & DECK 4 WLDMNT)	1
	4170741	BOLT, SPINDLE PULLEY 1/2-13 X 1-3/4 (USED ON DECK 2 WLDMNT)	
		MAXIMUM TORQUE: 57 FT-LBS	
3	4170930	WASHER, 1/2" PLAIN BELLEVILLE	1
4	64164-03	KEY, 1/4" SQUARE X 1 1/2" LONG (USED ON DECK 1 & DECK 2 WLDMNT)	1
	64164-10	KEY, 1/4" SQUARE X 1-1/4" LONG (USED ON DECK 3 & DECK 4 WLDMNT)	
5	4170792	SHEAVE, DOUBLE - MOWER DECK (USED ON DECK 1 & DECK 2 WLDMNT)	1
	4170871	SHEAVE, SINGLE -D6.3 C1.00 CAST (USED ON DECK 3 & DECK 4 WLDMNT)	
6	64123-70	BOLT, 3/8-16 X 1 1/2" HEX HEAD GRADE 5	4
7		SPINDLE ASSEMBLY, ZT CAST SEE FIGURE 5	1
8	64268-03	NUT, 3/8-16 FLANGED HEX NYLOC	4
9	4170730	BLADE, 21" X 2 1/2" X 1/4" HIGH LIFT	1
10	4170830	WASHER, 2 1/2" X 11/16" X 3/16" NYLON	1
11	64163-120	WASHER, 2 1/2" OD X 5/8" ID X 3/16" STD FLAT REMOVE TO INSTALL ANTI-ACALP BLADE DISC	1
12	64123-211	BOLT, 5/8-18 X 1 3/4" HEX HEAD GRADE 5 TORQUE TO 75 FT.LBS	1
13	4170794	BLADE DISC, ANTI-SCALP OPTIONAL-REMOVE ITEM 13 TO INSTALL ANTI-SCALP BLADE DISC.	1
14	4170828	STIFFENER, WLDMNT, BLADE E-SERIES (USED ON DECK 3 & DECK 4 WLDMNT)	1

FIGURE 5



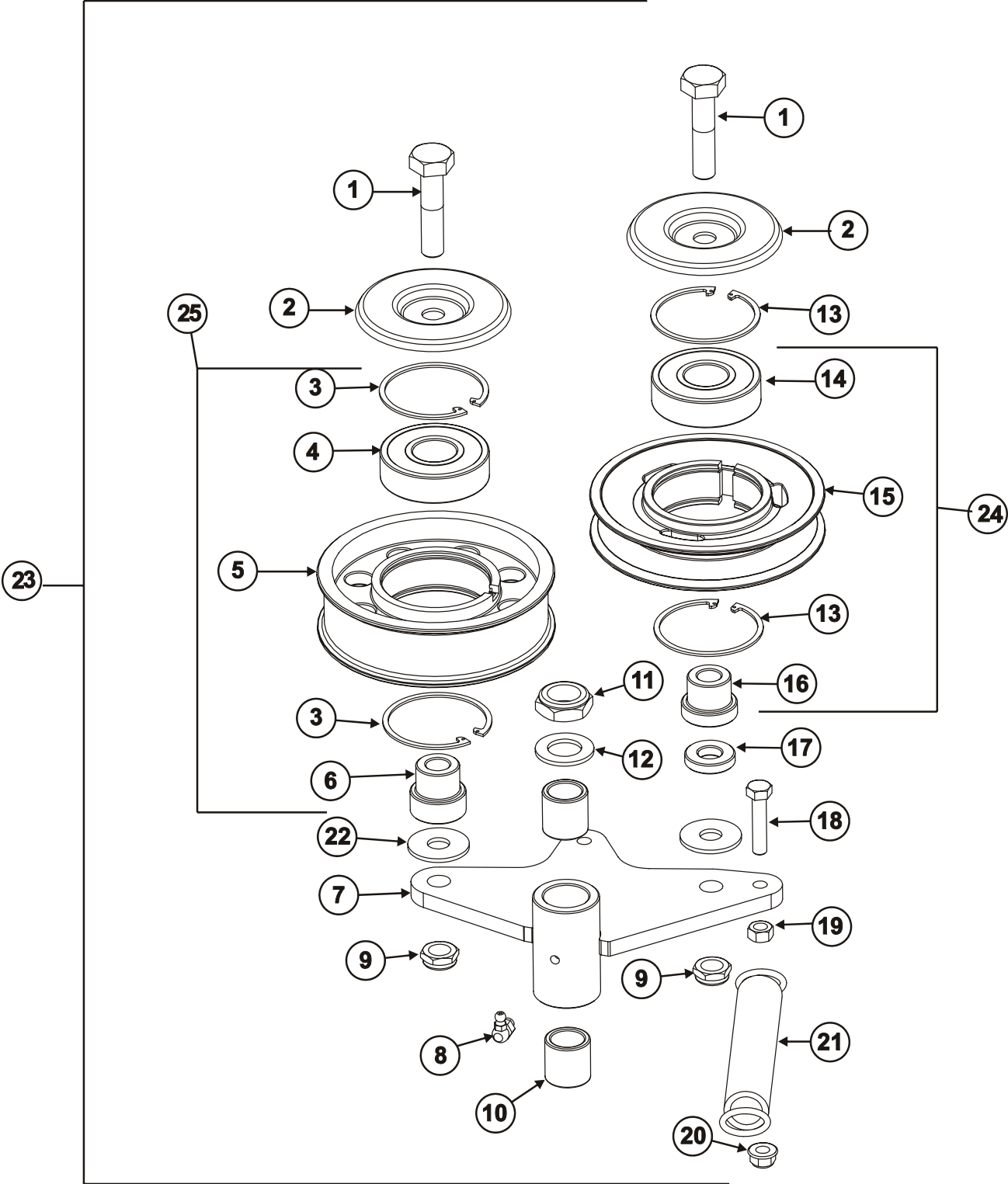
ITEM	PART NO.	DESCRIPTION	QTY
		SPINDLE ASSEMBLY, CENTER W/STIFFENER	1
		PURCHASE ITEMS 1-8 SEPARATELY	
1*	4170769	BEARING, 6206-2NSE	3
2	4170766	O-RING, 2 1/2" ID X 2 3/4" OD	4
3	4170795	SPACER, BEARING HOUSING	1
4	4170749	SPINDLE HOUSING, ZT- COMMON CORE	1
5	4170796	SPACER, SPINDLE BEARING HOUSING	1
6	4170927	WASHER, 1.50" X 1.185" X 16GA	1
7	4170926	WASHER, 2.435" X 1.185" X 11GA	1
8	4170748	SHAFT, BLADE SPINDLE ZT CAST	1

*Concerning Nachi Sealed Bearings:

One of the most common misconceptions that cause a high number of bearing failures is that a bearing needs to be completely packed full. Many people have been taught; the more grease, the better. We have even heard of cases where people do not feel bearing manufacturers use enough grease in sealed and shielded ball bearings, so they remove one seal or shield and pack the bearing with more grease. These misconceptions are completely false. Over lubricating the bearings forces the motor to work harder.

- Nachi standard grease fill for sealed and shielded ball bearings is 20% to 30% full.
- Too much grease can cause excess friction, thereby overheating the bearing and causing premature failure.
- Only a small of grease is required to lubricate a bearing in motion.
- When a bearing is in motion, most of the grease is pushed to the side (channeling) leaving a thin film of oil between the raceways and rolling elements.

FIGURE 6



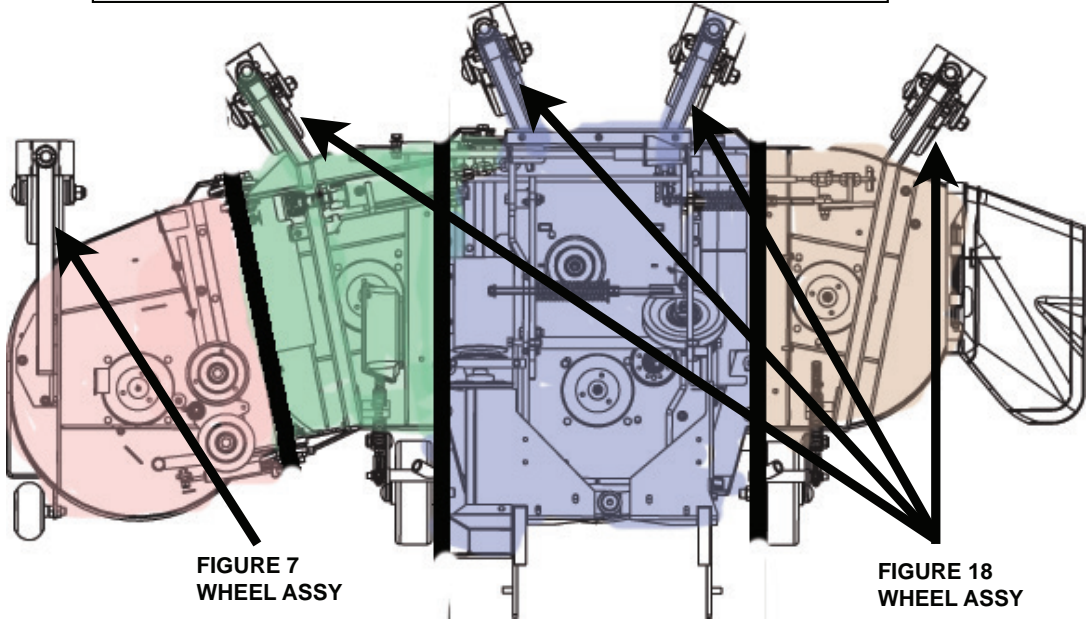
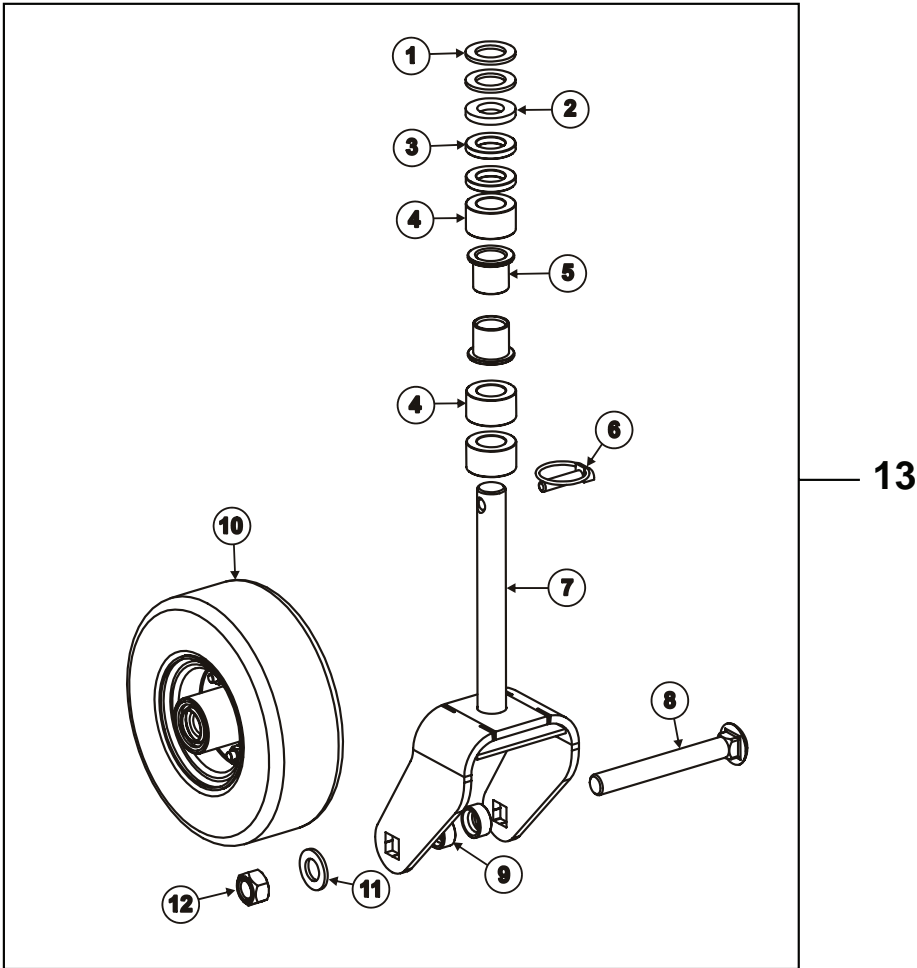
FLEX DECK MOWER

DECK 1 WLDMNT IDLER ASSY

FIGURE 6

ITEM	PART NO.	DESCRIPTION	QTY
1	64123-259	BOLT, 1/2-13 X 2 1/4" HEX HEAD GRADE 5	2
2	4170798	WASHER, WATER SHED PULLEY	2
3	64144-45	RING, 62MM IR DIN #472 RETAINING	2
4	4170765	BEARING, SPINDLE TOP 6305 RS	1
5	4170800	PULLEY, 5" OD IDLER, FLAT	1
6	4170801	BOSS, IDLER PULLEY STANDOFF	1
7	4170802	WELDMENT, 521E IDLER PLATE	1
8	35027N	FITTING, GREASE 90 DEG. 1/4-28	1
9	64151-37	NUT, 1/2-13 HALF NYLON LOCK	2
10	4170752	BUSHING, 3/4" ID X 1" OD X 1" OIL	2
11	64151-36	NUT, 3/4-10 HALF NYLOC	1
12	F64163-06	WASHER, 3/4" AN YEL/CAD	1
13	64144-45	RING, 62MM IR DIN #472 RETAINING	2
14	4170765	BEARING, SPINDLE TOP 6305 RS	1
15	4170804	PULLEY, 5" OD IDLER, V GROOVE	1
16	4170805	BOSS, IDLER PULLEY STANDOFF	1
17	4170918	SPACER, 1/4" THK DECK HEIGHT	1
18	64123-319	BOLT, 5/16-18 X 1 1/2" HEX HEAD FULL THREAD	1
19	64025-02	NUT, 5/16-18 HEX	1
20	64229-02	NUT, 5/16-18 FLANGED HEX NYLOCK	1
21	4170806	SPRING, 1" X 7" EXTENSION	1
22	4170929	WASHER, 1/2" STANDARD FLAT	2
23	4170797	IDLER ASSEMBLY, 521 (INCLUDES ITEMS 1-22)	1
24	4170803	PULLEY ASSEMBLY, 5" OD IDLER, V GROOVE (INCLUDES ITEMS 13-16)	1
25	4170799	PULLEY ASSEMBLY, 5" OD IDLER, FLAT (INCLUDES ITEMS 3-6)	1

FIGURE 7



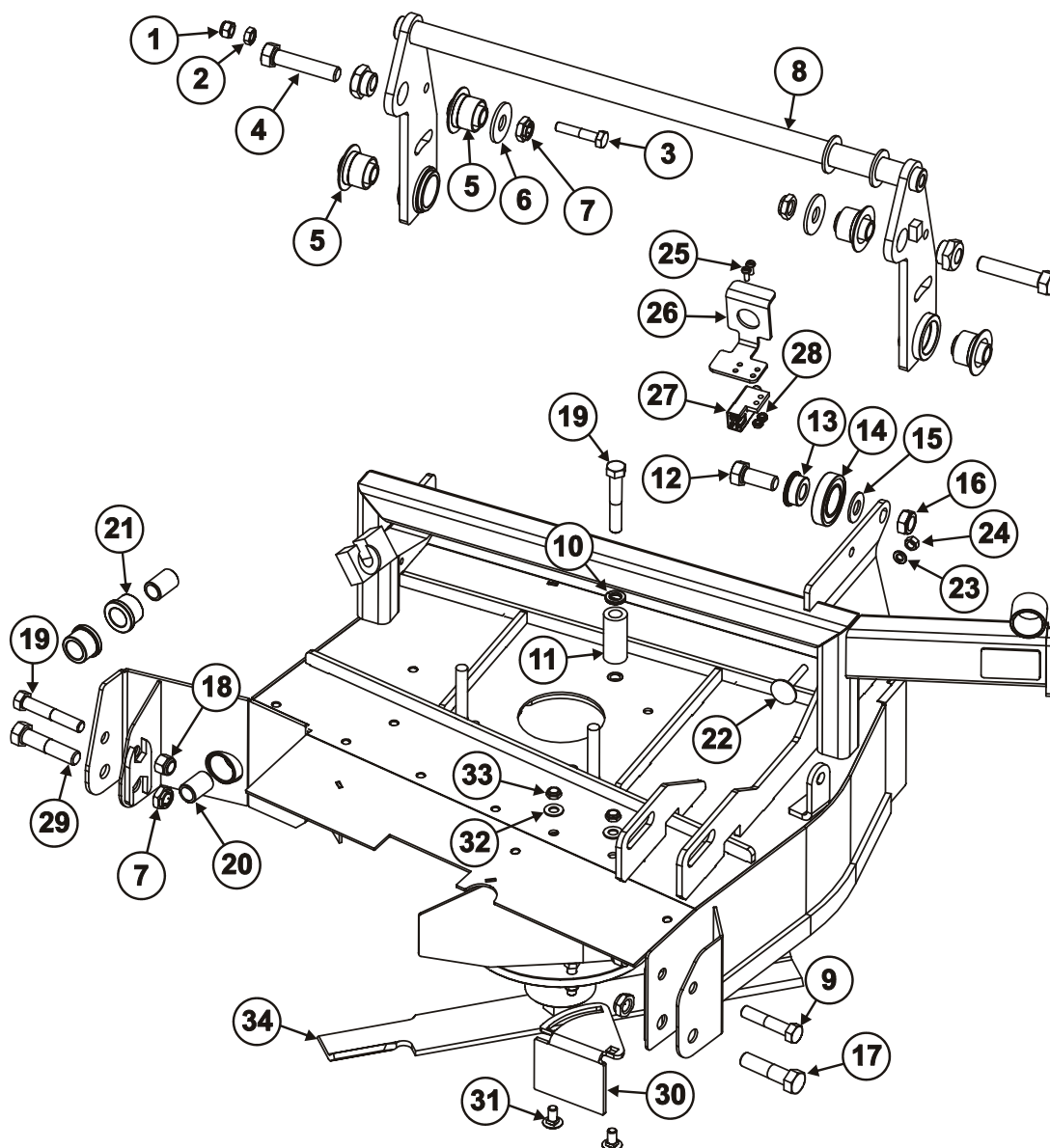
FLEX DECK MOWER

DECK 1 WHEEL YOKE ASSY

FIGURE 7

ITEM	PART NO.	DESCRIPTION	QTY
1	64163-84	WASHER, 1-1/16" X 1-3/4" X 1/8" ZNC	2
2	4170759	SPRING, WHEEL YOKE 1-0 URETHANE	1
3	64163-07	SPACER, 1" ID X 1-3/4" OD X 1/4"	2
4	4170751	SPACER, 1 3/4" OD X 1 1/16" ID X 1"	3
5	4170768	BUSHING, 1" ID X 1-1/4" OD X 1-1/4" FLANGED	2
6	4170925	PIN, 3/8" DIA LYNCH LOCKING	1
7	4170808	YOKE WELDMENT, EFLW 9 IN	1
8	64018-52	BOLT, 3/4-10 X 6" CARRIAGE GRADE 5	1
9	4170753	SPACER, 3/4" AXLE BOLT	2
10	4170724	WHEEL ASSEMBLY, 9X3.5 RELIANCE DM (SEE FIGURE 19)	1
11	64163-110	WASHER, 3/4" SAE FLAT	1
12	4170924	NUT, 3/4-10 STOVER SWAGED	1
13	4170807	WHEEL YOKE ASSEMBLY, EFLW 9 IN (INCLUDES ITEMS 1-12)	1

FIGURE 8



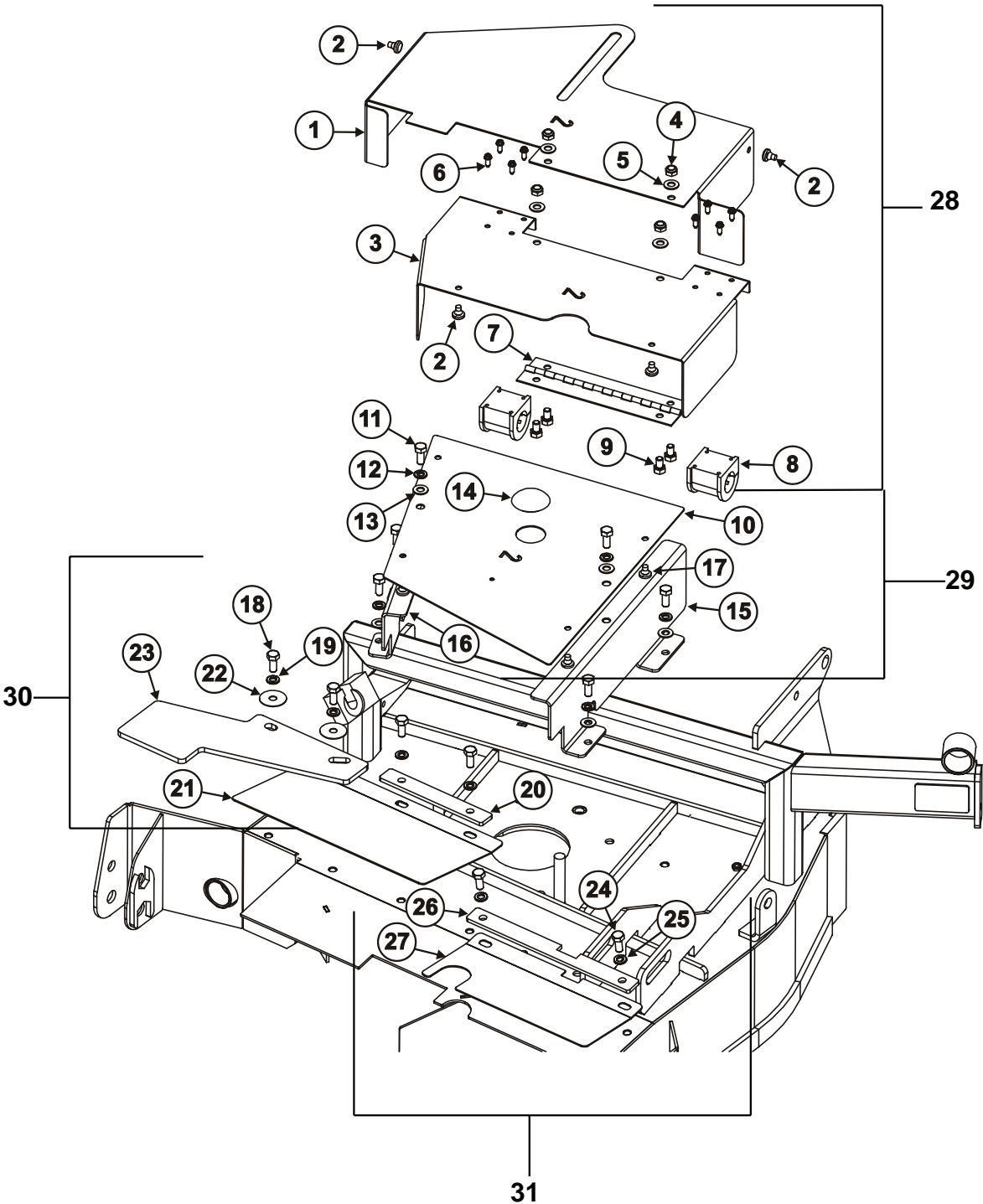
FLEX DECK MOWER

DECK 2 WLDMNT & HARDWARE

FIGURE 8

ITEM	PART NO.	DESCRIPTION	QTY
1	64237-10	NUT, 10MM X 1.25 NYLON	1
2	64207-10	NUT, M10-1.25 FREE ZINC PLATE	1
3	64206-18	SCREW, M10-1.25 X 45 HX CAP	1
4	64123-3285	BOLT, 5/8-11 X 3 HEX HEAD GRADE 5	2
5	4170755	BUSHING, URETHANE PIVOT	4
6	64163-76	WASHER, 5/8" STANDARD FLAT	2
7	64236-04	NUT, 5/8-11 FLEXLOC	4
8	4170809	HINGE WELDMENT, #2 DECK	1
9	6413-72	BOLT, 1/2-13 X 2 1/2" HEX HEAD GRADE 5	1
10	64006-05	WASHER, 1/2" SPLIT LOCK	1
11	4170810	TUBE, BELT KEEPER	1
12	64123-326	BOLT, 5/8-11 X 1 1/2" HEX HEAD FULL THREAD	2
13	4170811	SPACER, BEARING	1
14	4170812	BEARING, 1.25" X 2.25" X .50"	1
15	64163-119	WASHER, 5/8" SAE FLAT	1
16	64151-42	NUT, 5/8-11 JAM NYL LOCK	1
17	64123-168	BOLT, 5/8-11 X 2 1/2" HEX HEAD GRADE 5	1
18	64229-05	NUT, 1/2-13 NYL HEX LOCK	2
19	64123-31	BOLT, 1/2-13 X 3 HEX HEAD GRADE 5	2
20	4170760	SLEEVE, .875X1.39 LONG BUSHING	2
21	4170758	BUSHING, .875" BEARING	2
22	4170919	BOLT, 5/16-18 X 2" ELEVATOR	1
23	64006-02	WASHER, 5/16" SPLIT LOCK	1
24	64025-02	NUT, 5/16-18 HEX	1
25	64152-46	SCREW, 10-24 X 1/2" SL HEX MACHINE	2
26	4170815	SWITCH PLATE, HYDRAULIC CYLINDER	1
27	4170742	SWITCH, DPST N/O N/C	1
28	64025-15	NUT, #10-24 KEPS	2
29	64123-322	BOLT, 5/8-11 X 2 3/4 HEX HEAD GRADE 5	1
30	4170767	DEFLECTOR PLATE, #5 DECK GRASS	1
31	64018-53	BOLT, 3/8-16 X 3/4" CARRIAGE	2
32	64163-61	WASHER, 3/8" SAE FLAT	2
33	64151-34	NUT, 3/8-16 HALF NYLON LOCK	2
34		SPINDLE ASSEMBLY, ZT 21" D6.3-6.3 SPCR (SEE FIGURE 4)	1
35	4170775	DEFLECTOR ASSEMBLY, GRASS (INCLUDES ITEMS 30-33)	1

FIGURE 9



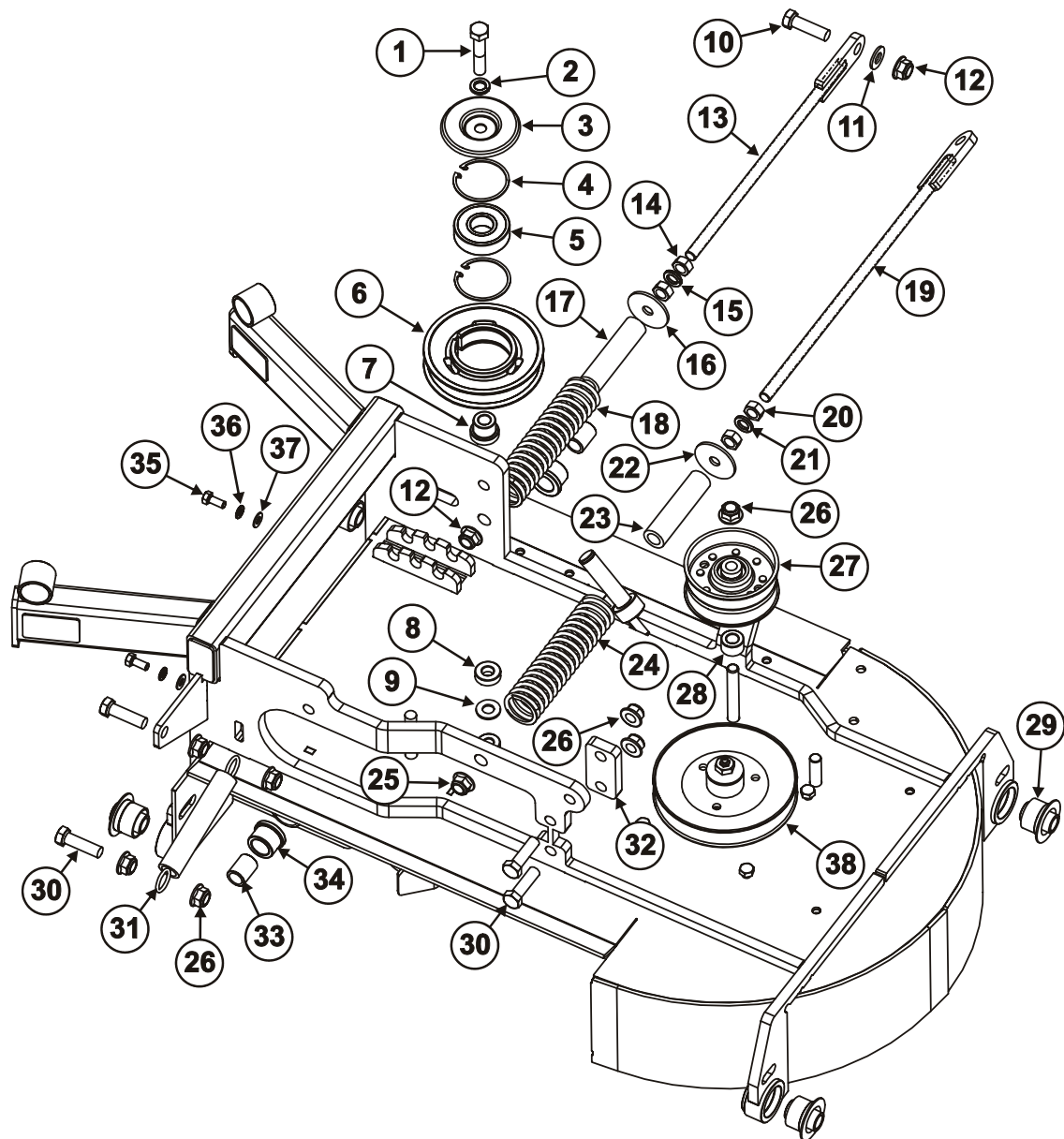
FLEX DECK MOWER

DECK 2 WLDMNT COVERS

FIGURE 9

ITEM	PART NO.	DESCRIPTION	QTY
1	4170817	COVER, #1 DECK SLIDING	1
2	4170734	BUMPER, RUBBER BUTTON	4
3	4170818	COVER, #2 DECK RIGHT SLIDING	1
4	64151-41	NUT, 5/16-18 NYLON LOCKING JAM	4
5	64163-95	WASHER, 5/16" SAE FLAT	4
6	64197-008	SCREW, #10 X 1/2" LONG AB THRD SLOT HEX	8
7	4170819	HINGE, 521E SLIDING COVER	1
8	4170743	PIVOT BEARING, COVER	2
9	64123-92	BOLT, 5/16-18 X 1/2" HEX HEAD GRADE 5	4
10	4170821	COVER PLATE, LEFT	1
11	64123-54	BOLT, 5/16-18 X 3/4" HEX HEAD GRADE 5	6
12	64006-02	WASHER, 5/16" SPLIT LOCK	6
13	64163-95	WASHER, 5/16" SAE FLAT	6
14	4170772	COVER, 1 3/8" HOLE PLUG	1
15	4170822	GUARD WELDMENT, #2 FRONT	1
16	4170823	GUARD WELDMENT, #2 REAR	1
17	4170734	BUMPER, RUBBER BUTTON	4
18	64123-54	BOLT, 5/16-18 X 3/4" HEX HEAD GRADE 5	4
19	64006-02	WASHER, 5/16" SPLIT LOCK	4
20	4170825	CLAMP PLATE, #2 DECK TRAP DOOR	1
21	4170744	DOOR, #2 DECK TRAP	1
22	64163-121	WASHER, 5/16" X 1 1/4" FENDER	2
23	4170747	DOOR, #2/4 DECK TRAP	1
24	64123-54	BOLT, 5/16-18 X 3/4" HEX HEAD GRADE 5	2
25	64006-02	WASHER, 5/16" SPLIT LOCK	2
26	4170827	CLAMP PLATE, #2 DECK TRAP DOOR	1
27	4170746	DOOR, #2 DECK TRAP	1
28	4170816	COVER ASSEMBLY, LEFT TRANSITION (INCLUDES ITEMS 1-9)	1
29	4170820	COVER ASSEMBLY, #2 DECK (INCLUDES ITEMS 10-17)	1
30	4170824	DOOR ASSEMBLY, #2 TRAP (INCLUDES ITEMS 18-23)	1
31	4170826	DOOR ASSEMBLY, #2 TRAP (INCLUDES ITEMS 24-27)	1

FIGURE 10



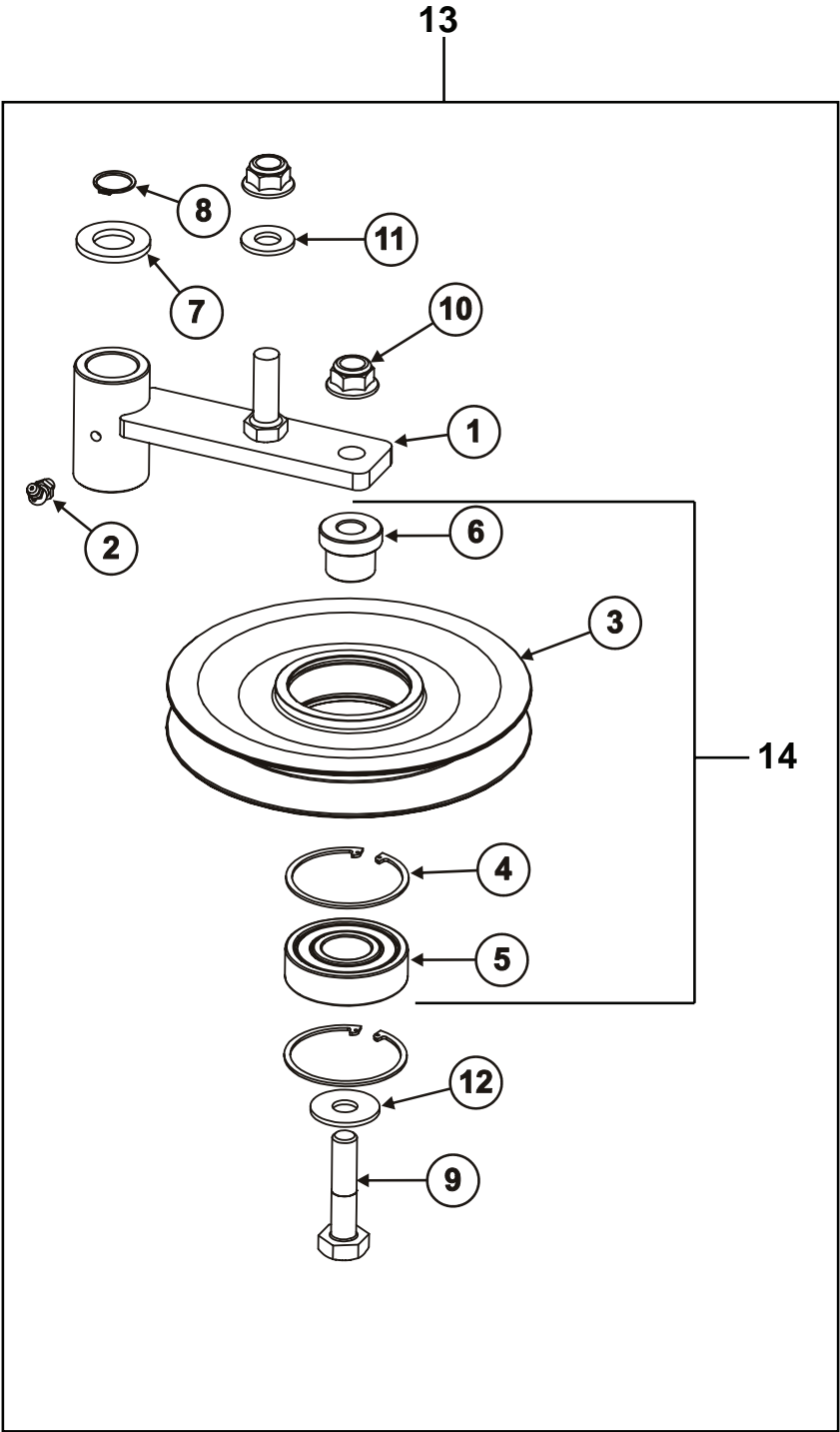
FLEX DECK MOWER

DECK 3 WLDMNT & HARDWARE

FIGURE 10

ITEM	PART NO.	DESCRIPTION	QTY
1	64123-72	BOLT, 1/2-13 X 2 1/4" HEX HEAD GRADE 5	1
2	64006-05	WASHER, 1/2" SPLIT LOCK	1
3	4170831	WASHER, WATER SHED PULLEY	1
4	64144-45	RING, 62MM IR DIN #472 RETAINING	2
5	4170765	BEARING, SPINDLE TOP 6305 RS	1
6	4170804	PULLEY, 5" OD IDLER, V GROOVE	1
7	4170805	BOSS, IDLER PULLEY STANDOFF	1
8	4170832	SPACER, 3/8" DECK LIFT 425	1
9	64163-118	WASHER, 1/2" SAE FLAT	1
10	64123-316	BOLT, 1/2-13 X 1 3/4" HEX HEAD GRADE 5 FTH	1
11	64163-118	WASHER, 1/2" SAE FLAT	1
12	64268-05	NUT, 1/2-13 FLANGED HEX NYLOCK	2
13	4170834	TENSIONER WELDMENT, DECK	1
14	64025-09	NUT, 1/2-13 HEX	2
15	64006-05	WASHER, 1/2" SPLIT LOCK	1
16	4170835	WASHER, MOTOR MOUNT	1
17	4170836	SPACER, NEOPRENE SPRING	1
18	4170837	SPRING, COMP. 1-1/2 OD X 6-3/4 X 3/16 WIRE	1
19	4170839	TENSIONER WELDMENT, BELT	1
20	64025-09	NUT, 1/2-13 HEX	2
21	64006-05	WASHER, 1/2" SPLIT LOCK	1
22	4170835	WASHER, MOTOR MOUNT	1
23	4170836	SPACER, NEOPRENE SPRING	1
24	4170837	SPRING, COMP. 1-1/2 OD X 6-3/4 X 3/16 WIRE	1
25	64268-085	NUT, 1/2-13 FLANGED HEX NYLOCK	1
26	64268-05	NUT, 1/2-13 FLANGED HEX NYLOCK	7
27	4170771	PULLEY, 4" OD IDLER	1
28	4170840	SPACER, 1" ODX .53 IDX 5/8 LONG	1
29	4170755	BUSHING, URETHANE PIVOT	4
30	64123-316	BOLT, 1/2-13 X 1 3/4" HEX HEAD GRADE 5	4
31	4170806	SPRING, 1X7 EXTENSION	1
32	4170842	SPACER PLATE, ZSR	1
33	4170843	SLEEVE, .875X1.14 LG BUSHING	2
34	4170758	BUSHING, .875 BEARING	2
35	64123-54	BOLT, 5/16-18 X 3/4" HEX HEAD GRADE 5	2
36	64006-02	WASHER, 5/16" SPLIT LOCK	2
37	64163-95	WASHER, 5/16" SAE FLAT	2
38		SPINDLE ASSEMBLY, EZT 21" SPCR (SEE FIGURE 13)	1
39	4170803	PULLEY ASSEMBLY, 5IN OD IDLER, V GROOVE (INCLUDES ITEMS 4-7)	1
40	4170833	TENSIONER ASSEMBLY, DECK (INCLUDES ITEMS 10-18)	1
41	4170838	TENSIONER ASSEMBLY, BELT (INCLUDES ITEMS 19-25)	1

FIGURE 11



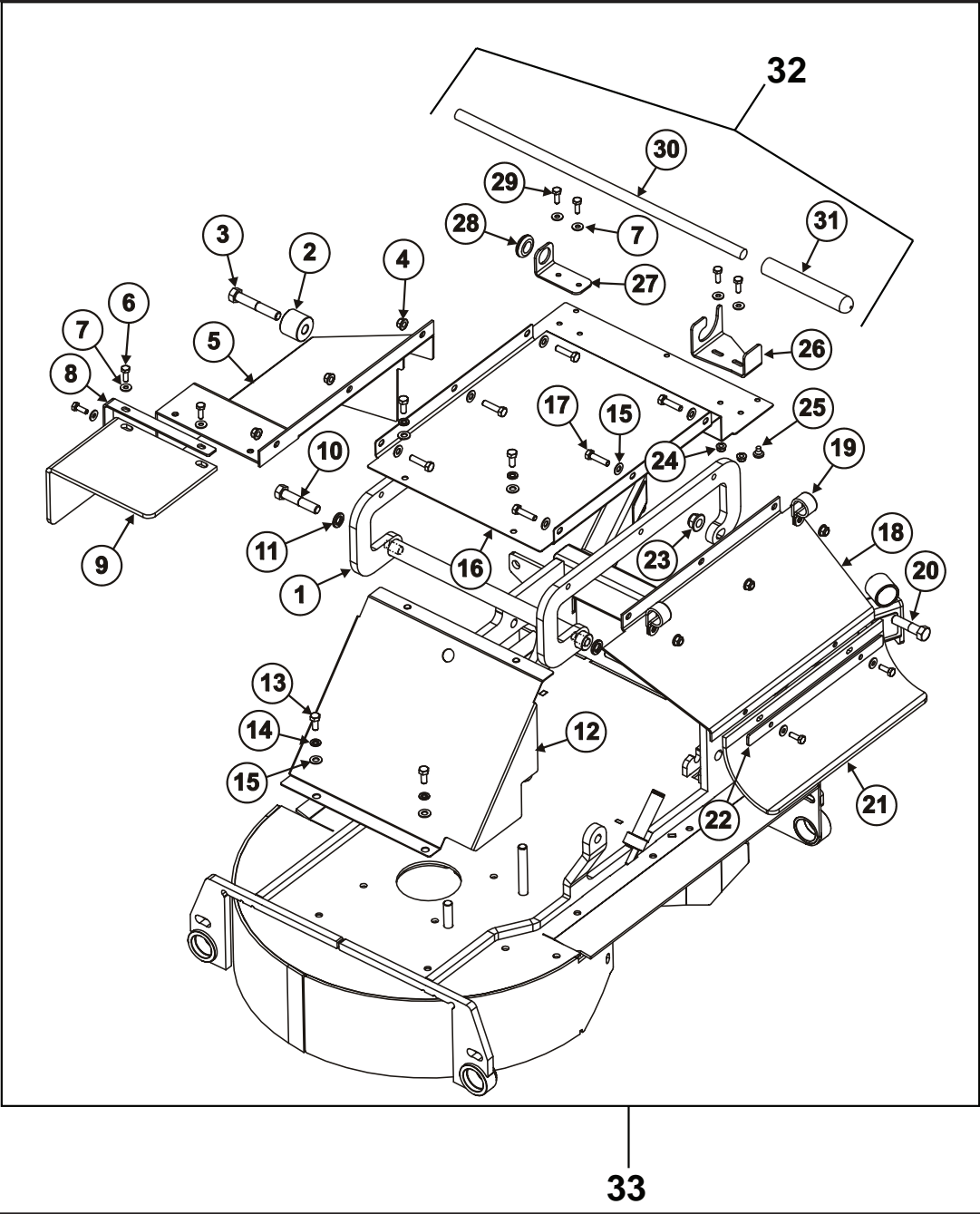
FLEX DECK MOWER

DECK 3 TENSIONER ASSY

FIGURE 11

ITEM	PART NO.	DESCRIPTION	QTY
1	4170847	TENSIONER WELDMENT, BELT	1
2	38388	FITTING, 1/4-28 45 DEG GREASE	1
3	4170846	PULLEY, MODIFIED 7-1/4 OD IDLER	1
4	64144-45	RING, 62MM IR DIN #472 RETAINING	2
5	4170765	BEARING, SPINDLE TOP 6305 RS	1
6	4170805	BOSS, IDLER PULLEY STANDOFF	1
7	64163-110	WASHER, 3/4" SAE FLAT	1
8	64144-02	RING, 3/4" EXTERNAL - EXTERNAL	1
9	64123-259	BOLT, 1/2-13 X 2 1/4" HEX HEAD GRADE 5	1
10	64268-05	NUT, 1/2-13 FLANGED HEX NYLOCK	2
11	64163-118	WASHER, 1/2" SAE FLAT	1
12	4170929	WASHER, 1/2" STANDARD FLAT	1
13	4170844	TENSIONER ASSEMBLY, DECK #3 (INCLUDES ITEMS 1-12)	1
14	4170845	PULLEY ASSEMBLY, 7" OD IDLER (INCLUDES ITEM 3-6)	1

FIGURE 12



FLEX DECK MOWER

DECK 3 WLDMNT COVERS

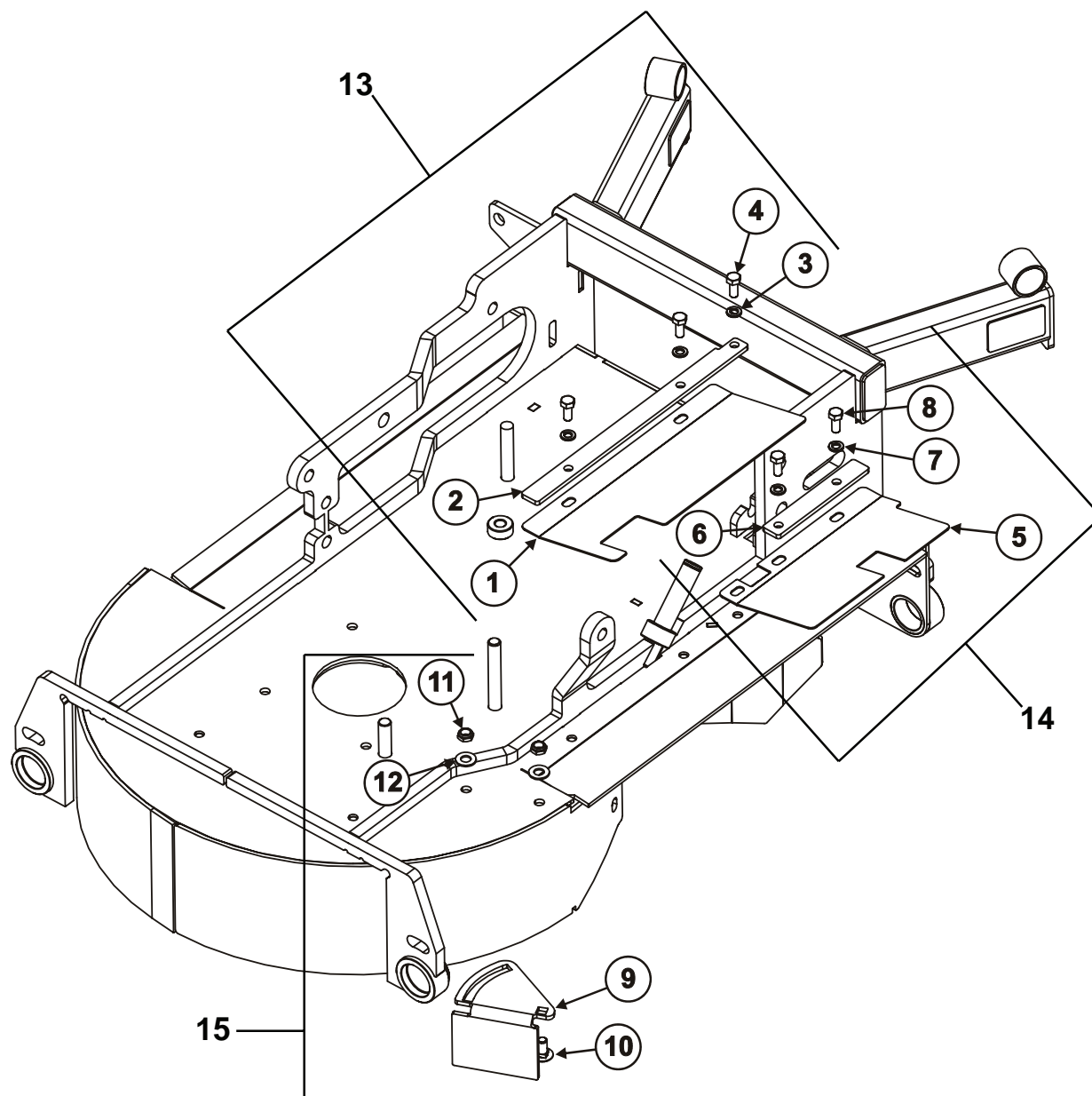
FIGURE 12

ITEM	PART NO.	DESCRIPTION	QTY
1	4170849	FRAME WELDMENT, #3 DECK	1
2	4170850	SPACER, 1-1/2 ODX .53 IDX 1-1/4 THK	1
3	64123-31	BOLT, 1/2-13 X 3" HEX HEAD GRADE 5	1
4	64268-02	NUT, 5/16-18 FLANGED HEX NYLOCK	6
5	4170851	COVER, #3 DECK LEFT	1
6	64123-89	BOLT, 1/4-20 X 3/4" HEX HEAD GRADE 5	5
7	64163-117	WASHER, 1/4" SAE FLAT	9
8	4170852	CLAMP PLATE, LEFT GUARD	1
9	4170853	GUARD, LEFT RUBBER	1
10	64123-72	BOLT, 1/2-13 X 2 1/2" HEX HEAD GRADE 5	2
11	64006-05	WASHER, 1/2" SPLIT LOCK	2
12	4170854	COVER WELDMENT, #3 REAR CENTER	1
13	64123-54	BOLT, 5/16-18 X 3/4" HEX HEAD GRADE 5	4
14	64006-02	WASHER, 5/16" SPLIT LOCK	4
15	64163-95	WASHER, 5/16" SAE FLAT	10
16	4170855	CENTER COVER, #3 DECK	1
17	64123--320	BOLT, 5/16-18 X 1 1/4" HEX HEAD FULL THREAD	6
18	4170856	COVER, #3 DECK RIGHT	1
19	4170857	CLAMP, 1" ID COATED	2
20	64123-24	BOLT, 1/2-13 X 2" HEX HEAD GRADE 5	1
21	4170858	GUARD, RIGHT RUBBER	1
22	4170859	CLAMP PLATE, RIGHT GUARD	1
23	64268-05	NUT, 1/2-13 FLANGED HEX NYLOCK	2
24	64268-01	NUT, 1/4-20 FLANGED HEX NYLOCK	4
25	4170734	BUMPER, RUBBER BUTTON	3
26	4170860	CLIP, HANDLE DECK	1
27	4170861	BRACKET, DECK BAR HOLDER	1
28	4170862	GROMMET, 11/16 X 1 X 1 5/16 RUBBER	1
29	64123-89	BOLT, 1/4-20 X 3/4" HEX HEAD	4
30	4170864	HANDLE, DECK LIFT ROD	1
31	4170865	HANDLE, FOAM .625X6X3/16 WALL	1
32	4170863	HANDLE ASSEMBLY, 100ZT DECK LIFT (INCLUDES ITEMS 30-31)	1
33	4170848	FRAME ASSEMBLY, CENTER (INCLUDES ITEMS 1-31)	1

DECK 3 TRAP DOORS

FIGURE 13

**FLEX
DECK
MOWER**



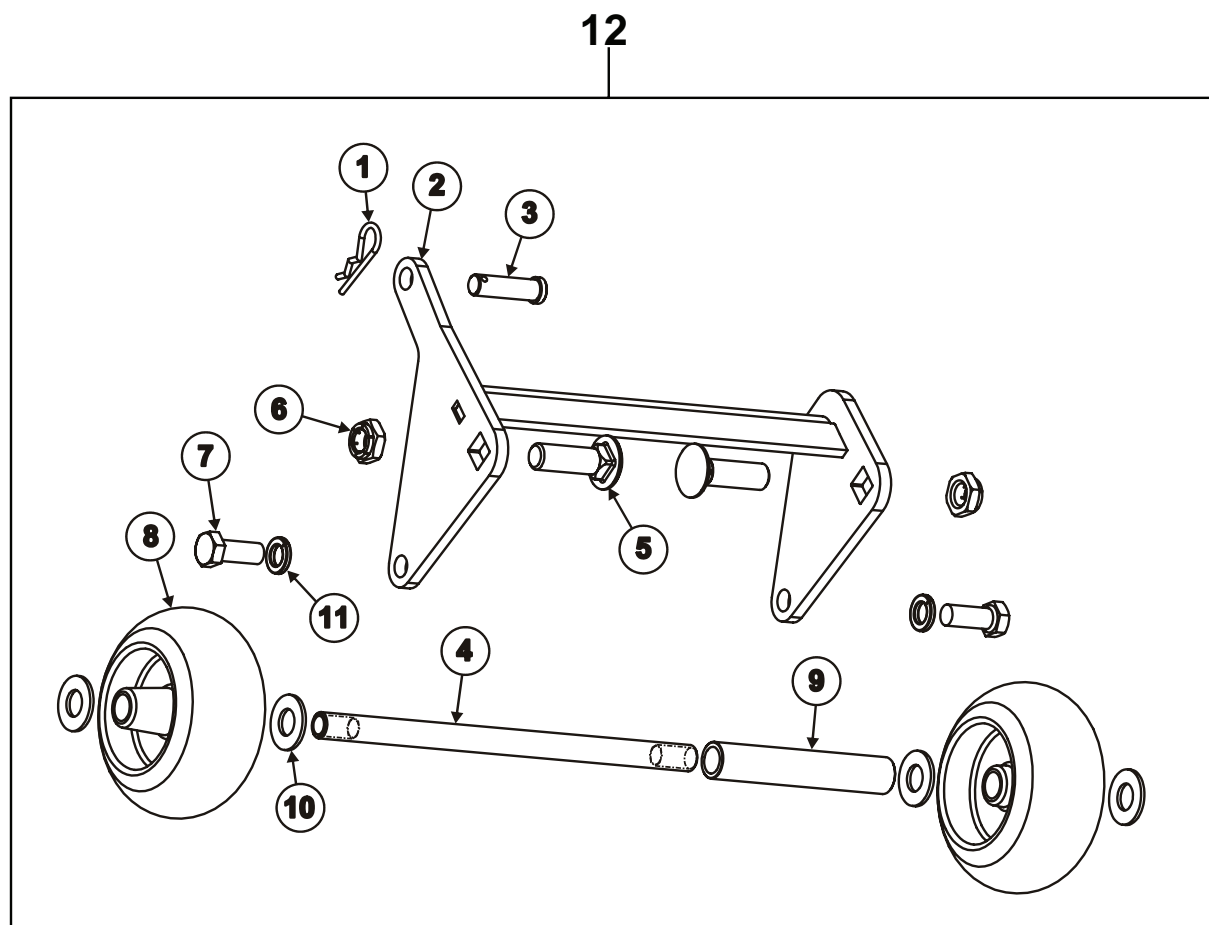
FLEX DECK MOWER

DECK 3 TRAP DOORS

FIGURE 13

ITEM	PART NO.	DESCRIPTION	QTY
1	4170745	DOOR, 521E/Z #3 DECK TRAP	1
2	4170867	CLAMP PLATE, #3 DECK TRAP DOOR	1
3	64006-02	WASHER, 5/16" SPLIT LOCK	3
4	64123-54	BOLT, 5/16-18 X 3/4" HEX HEAD GRADE 5	3
5	4170869	DOOR, 521E/Z #3 DECK TRAP	1
6	4170870	CLAMP PLATE, #3 DECK TRAP DOOR	1
7	64006-02	WASHER, 5/16" SPLIT LOCK	2
8	64123-54	BOLT, 5/16-18 X 3/4" HEX HEAD GRADE 5	2
9	4170767	DEFLECTOR PLATE, #5 DECK GRASS	1
10	64018-53	BOLT, 3/8-16 X 3/4" CARRIAGE	2
11	64141-34	NUT, 3/8-16 HALF NYLOC	2
12	64163-61	WASHER, 3/8" FLAT SAE	2
13	4170866	DOOR ASSEMBLY, #3 DECK TRAP (INCLUDES ITEMS 1-4)	1
14	4170868	DOOR ASSEMBLY, #3 DECK TRAP (INCLUDES ITEMS 5-8)	1
15	4170774	DEFLECTOR ASSEMBLY, GRASS (INCLUDES ITEMS 9-12)	1

FIGURE 14



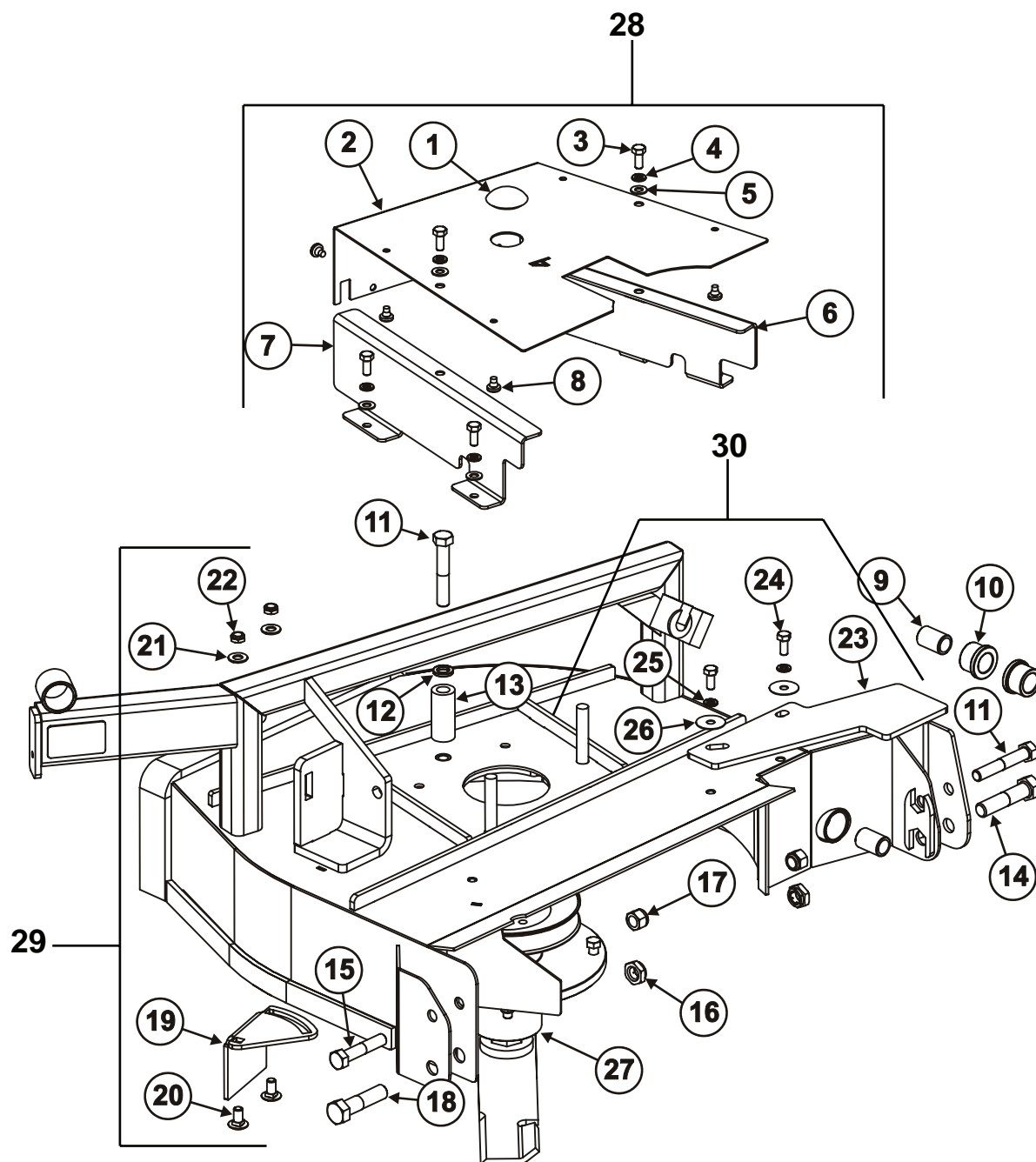
FLEX DECK MOWER

ANTI SCALP ROLLER ASSY

FIGURE 14

ITEM	PART NO.	DESCRIPTION	QTY
1	64168-1	PIN, 1/8" X 1 13/16" SAFETY	1
2	4170873	FRAME WELDMENT, 521E/Z ANTI-SCALP	1
3	64188-32	PIN, 1/2" X 1 3/4" CLEVIS YZC	1
4	4170874	AXLE ROD, 3300 ANTI-SCALP ROLLER	1
5	64018-54	BOLT, 5/8-11 X 2" GRADE 5 CARRIAGE	2
6	64123-04	NUT, 5/8-11 FLEXLOC	2
7	64123-39	BOLT, 1/2-13 X 1 1/4" HEX HEAD GRADE 5	2
8	4170739	WHEEL, ANTI-SCALP 5-5/8" HOLE	2
9	4170876	SLEEVE, 7/8" OD X 5" LONG BUSHING	1
10	64163-119	WASHER, 5/8" SAE FLAT	4
11	64006-05	WASHER, 1/2" SPLIT LOCK	2
12	4170872	ROLLER ASSEMBLY, 521E/Z ANTI-SCALP (INCLUDES ITEMS 1-11)	1

FIGURE 15



FLEX DECK MOWER

DECK 4 WLDMNT COVERS & HARDWARE

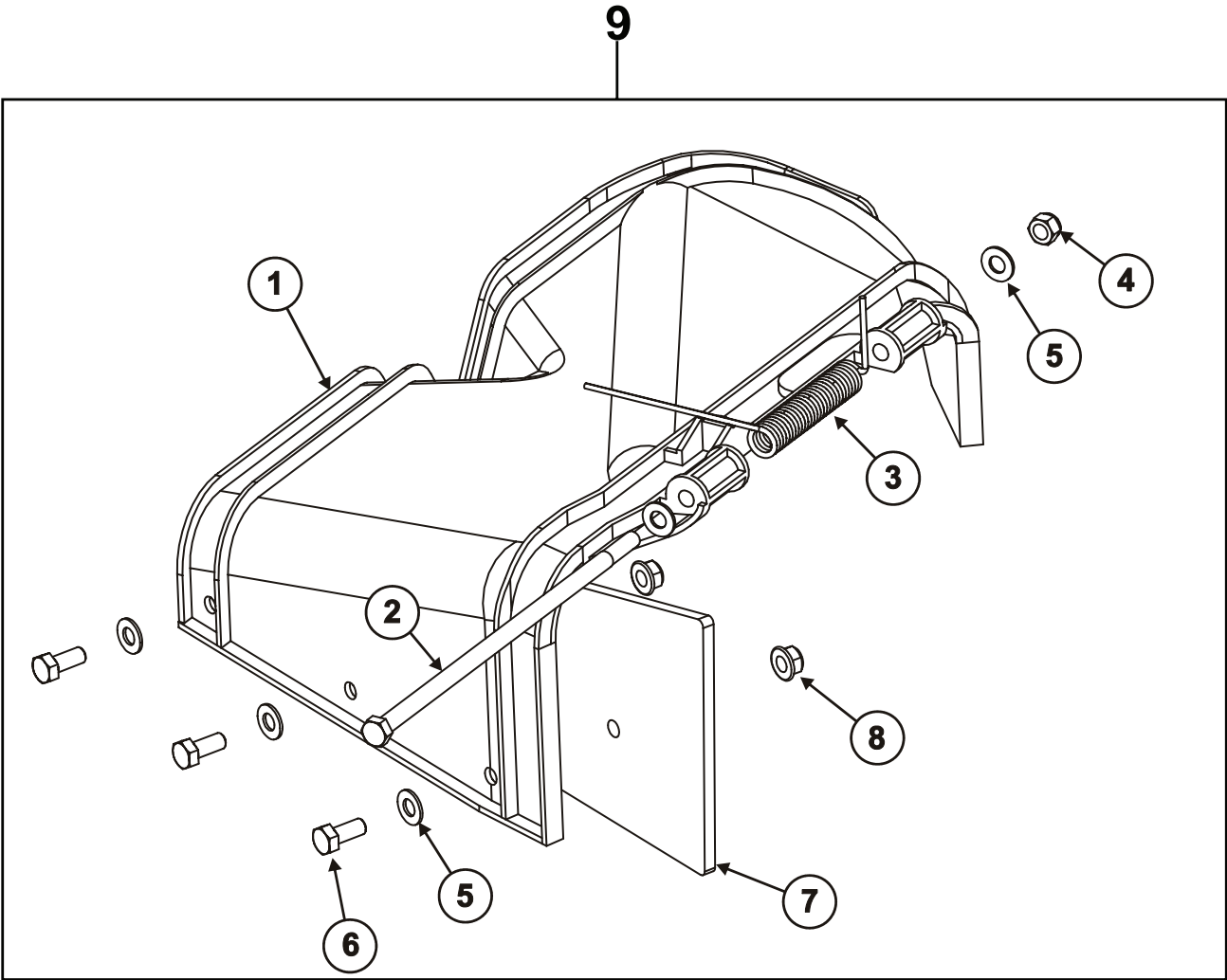
FIGURE 15

ITEM	PART NO.	DESCRIPTION	QTY
1	4170772	COVER, HOLE PLUG 1-3/8	1
2	4170878	COVER PLATE, RIGHT	1
3	64123-54	BOLT, 5/16-18 X 3/4" HEX HEAD GRADE 5	6
4	64006-02	WASHER, 5/16" SPLIT LOCK	6
5	64163-95	WASHER, 5/16" SAE FLAT	6
6	4170879	GUARD WELDMENT, #4 REAR	1
7	4170880	GUARD WELDMENT, #4 FRONT	1
8	4170734	BUMPER, RUBBER BUTTON	1
9	4170760	SLEEVE, .875X1.39 LG BUSHING	2
10	4170758	BUSHING, .875 BEARING	2
11	64123-31	BOLT, 1/2-13 X 3" HEX HEAD GR5	2
12	64006-05	WASHER, 1/2" SPLIT LOCK	1
13	4170810	TUBE, BELT KEEPER	1
14	64123-322	BOLT, 5/8-11 X 2 3/4" HEX HEAD GRADE 5	1
15	64123-72	BOLT, 1/2-13 X 2 1/2" HEX HEAD GRADE 5	1
16	64236-04	NUT, 5/8-11 FLEXLOC	2
17	64229-05	NUT, 1/2-13 NYL HEX LOCK	2
18	64123-168	BOLT, 5/8-11 X 2 1/2" HEX HEAD GRADE 5	1
19	4170767	DEFLECTOR PLATE, #5 DECK GRASS	1
20	64018-53	BOLT, 3/8-16 X 3/4" CARRIAGE	2
21	64163-61	WASHER, 3/8" SAE FLAT	2
22	64151-34	NUT, 3/8-16 HALF NYLON LOCK	2
23	4170747	DOOR, #2/4 DECK TRAP	2
24	64123-54	BOLT, 5/16-18 X 3/4" HEX HEAD GRADE 5	2
25	64006-02	WASHER, 5/16" SPLIT LOCK	2
26	64163-121	WASHER, 5/16 X 1 1/4 FENDER	2
27		SPINDLE ASSEMBLY, EZT 21" D6.3 SPCR (SEE FIGURE 4)	1
28	4170877	COVER ASSEMBLY, SIDE DISCHARGE #4 DECK (INCLUDES ITEMS 1-8)	1
29	4170774	DEFLECTOR ASSEMBLY, GRASS (INCLUDES ITEMS 19-22)	1
30	4170881	DOOR ASSEMBLY, #4 DECK TRAP (INCLUDES ITEMS 23-26)	1

EXTENDED CHUTE ASSY

**FLEX
DECK
MOWER**

FIGURE 16



FLEX DECK MOWER

EXTENDED CHUTE ASSY

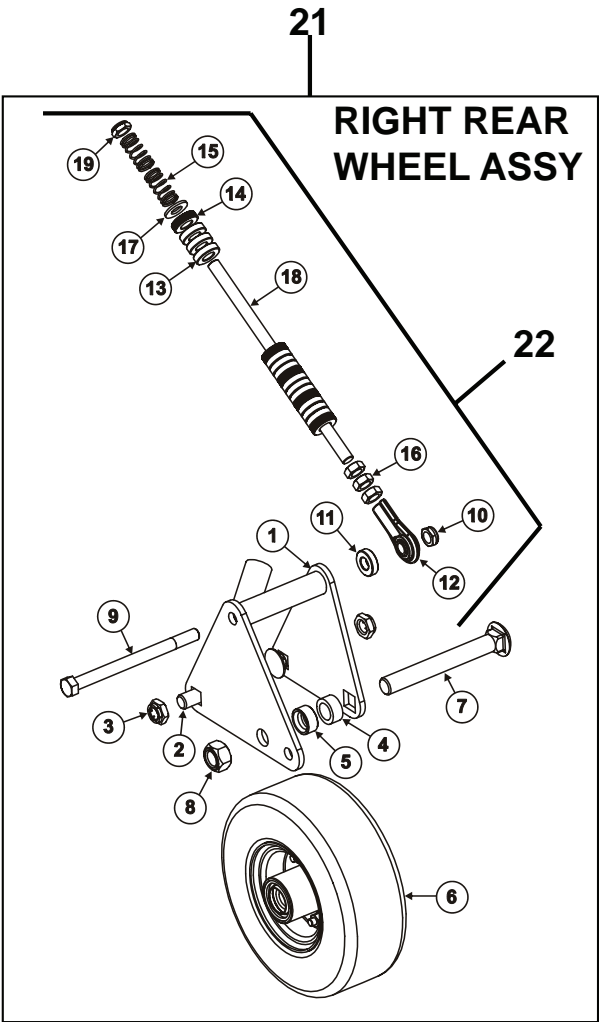
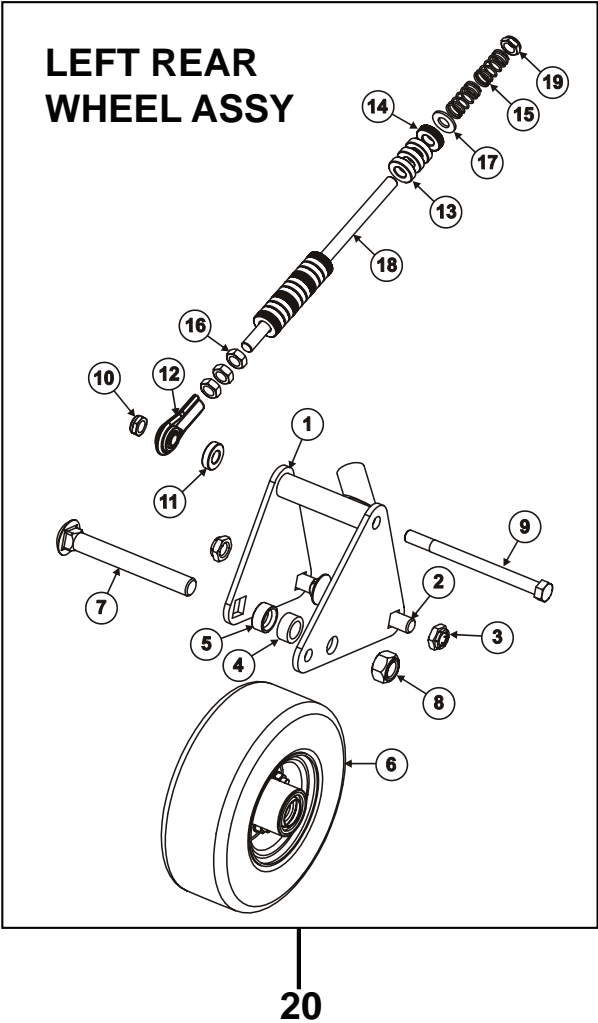
FIGURE 16

ITEM	PART NO.	DESCRIPTION	QTY
1	4170737	GRASS CHUTE, MODIFIED	1
2	64123-321	BOLT, 5/16-18 X 9 HEX HEAD GRADE 5	1
3	4170883	SPRING, DEERE RH TORSION	1
4	64229-02	NUT, 5/16-18 NYLOK HEX	1
5	64163-95	WASHER, 5/16" SAE FLAT	5
6	64123-68	BOLT, 5/16-18 X 1" HEX HEAD GRADE 5	3
7	4170736	CHUTE EXTENSION, GRASS RUBBER	1
8	64268-02	NUT, 5/16-18 FLANGED HEX NYLOCK	3
9	4170882	GRASS CHUTE ASSEMBLY, EXTENDED (INCLUDES ITEMS 1-8)	1

REAR WHEEL ASSYS

FLEX
DECK
MOWER

FIGURE 17



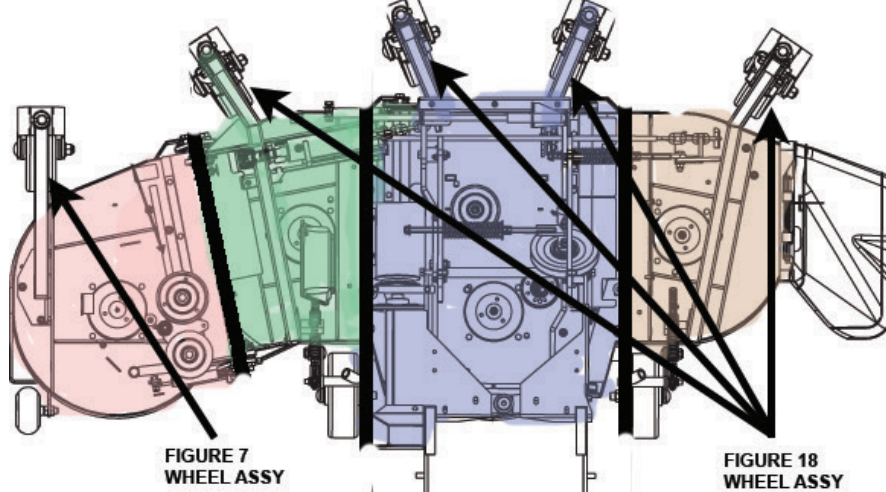
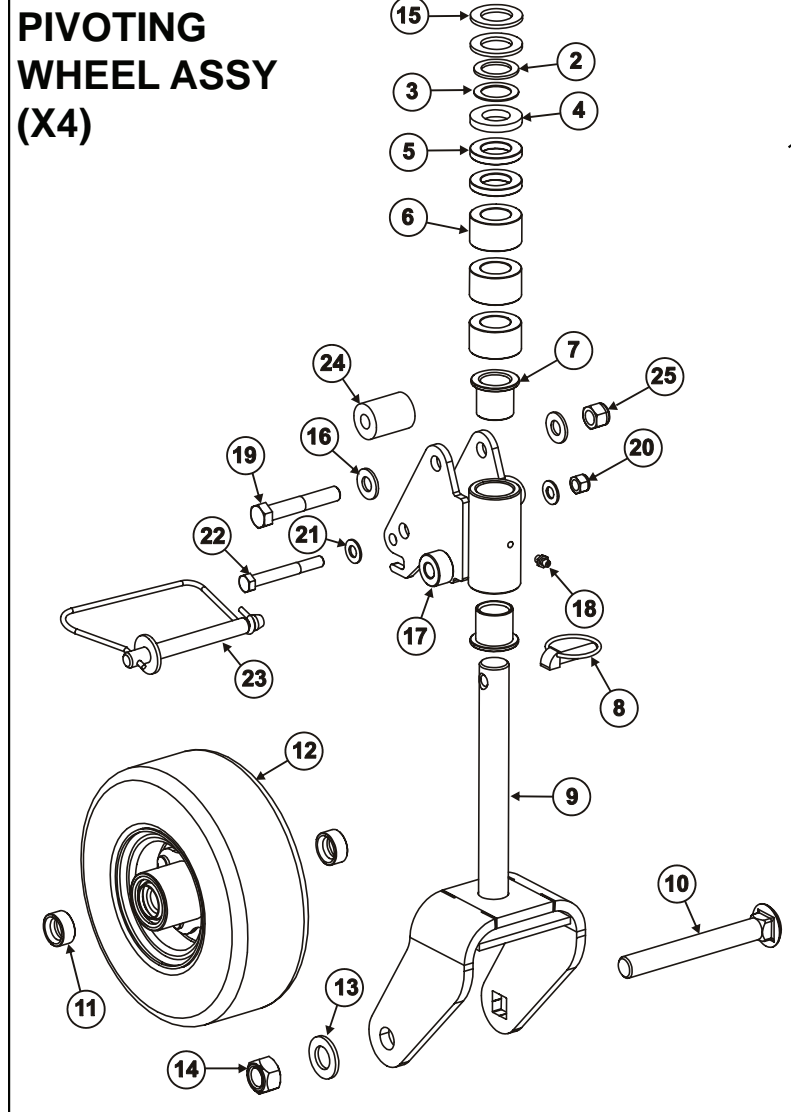
FLEX DECK MOWER

LEFT REAR WHEEL ASSYS

FIGURE 17

ITEM	PART NO.	DESCRIPTION	QTY
1	4170885	WHEEL WELDMENT, LEFT REAR 80EFS	1
	4170893	WHEEL WELDMENT, RIGHT REAR 80EFS	1
2	64018-54	BOLT, 5/8-11 X 2 GRADE 5 CARRIAGE	2
3	64236-04	NUT, 5/8-11 FLEXLOC	2
4	4170770	SPACER, 1.13 OD X .75 ID X .5	1
5	4170753	SPACER, 3/4" AXLE BOLT	1
6	4170724	WHEEL ASSEMBLY, 9 X 3.5 RELIANCE DM (SEE FIGURE 19)	1
7	64018-52	BOLT, 3/4-10 X 6" GRADE 5 CARRIAGE	1
8	4170924	NUT, 3/4-10 STOVER SWAGED	1
9	64123-317	BOLT, 1/2-13 X 6 1/2" HEX HEAD GRADE 5	1
10	64151-37	NUT, 1/2-13 HALF NYLOC	1
11	4170886	SPACER, 5/16" THK DECK HEIGHT	1
12	4170887	ROD END, 1/2-20 FEMALE	1
13	4170886	SPACER, 5/16" THK DECK HEIGHT	12
14	4170888	SPACER, 5/16" THK KNURLED	5
15	4170889	SPRING, .72 X 1.5 X .063 COMPRESSION	2
16	64151-43	NUT, 1/2-20 HEX JAM	3
17	64163-118	WASHER, 1/2" SAE FLAT	1
18	4170890	ROD, DECK LIFT LOCK	1
19	64151-44	NUT, 1/2-20 JAM NYL LOCK	1
20	4170884	WHEEL ASSEMBLY, LEFT REAR (INCLUDES ITEMS 1-19)	1
21	4170892	WHEEL ASSEMBLY, RIGHT REAR (INCLUDES ITEMS 1-19)	1
22	4170891	ROD ASSY, REAR DECK HEIGHT (INCLUDED ITEMS 12-19)	1

DECK



FLEX DECK MOWER

PIVOTING WHEEL ASSY

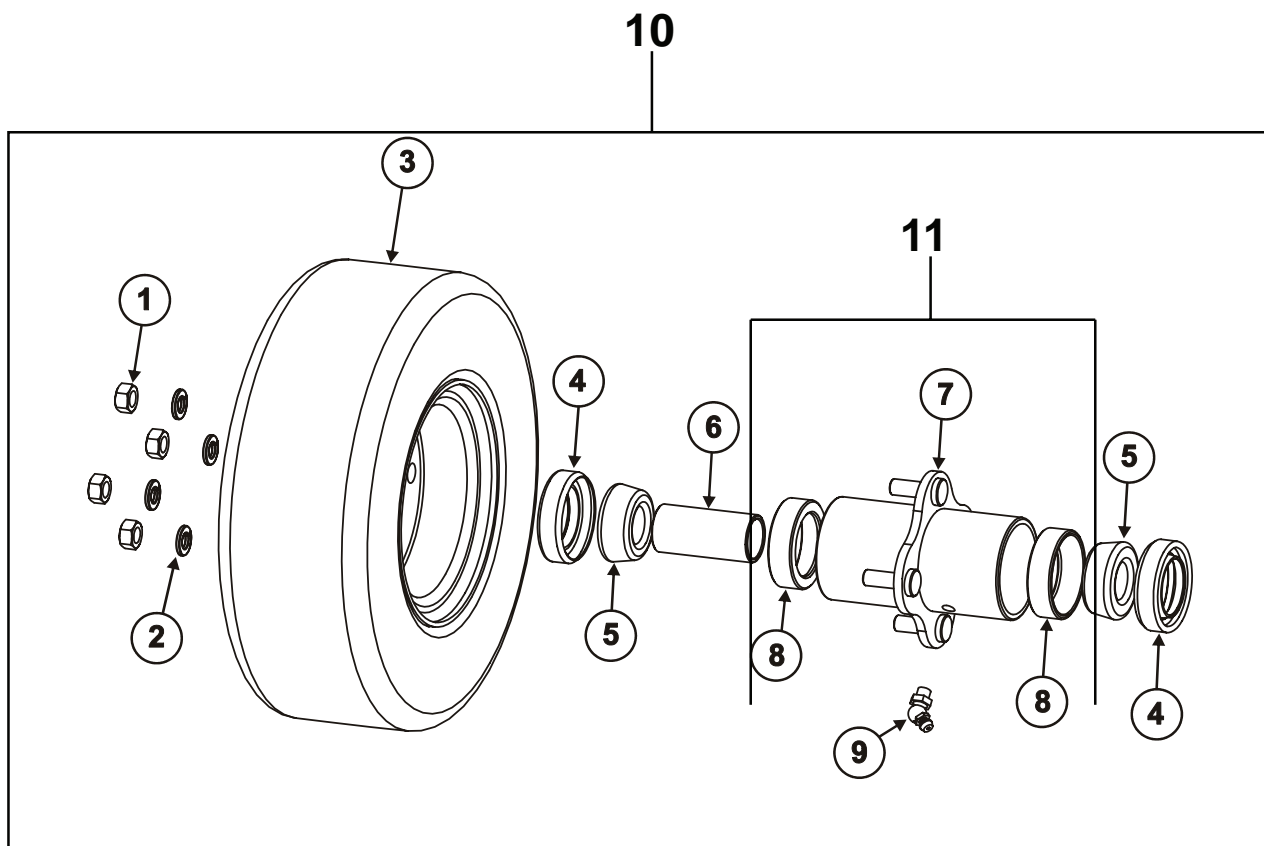
FIGURE 18

ITEM	PART NO.	DESCRIPTION	QTY
1	4170895	WHEEL YOKE ASSEMBLY, 9" (INCLUDES ITEMS 2-15)	5
2	4170932	WASHER, 1" ID .06 SS SHIM	1
3	4170931	WASHER, 1" ID .03 SS SHIM	1
4	4170759	SPRING, WHEEL YOKE 1-0 URETHANE	1
5	64163-07	SPACER, 1" ID X 1-3/4" OD X 1/4"	2
6	4170751	SPACER, 1 3/4" OD X 1 1/16" ID X 1"	3
7	4170768	BUSHING, 1" ID X 1-1/4" OD X 1-1/4" FLANGED	2
8	4170925	PIN, 3/8" DIA LYNCH LOCKING	1
9	4170896	YOKE WELDMNT, 9"	1
10	64018-52	BOLT, 3/4-10 X 6" CARRIAGE GRADE 5	1
11	4170753	SPACER, 3/4" AXLE BOLT	2
12	4170724	WHEEL ASSEMBLY, 9" X 3.5" SOLID DM SEE FIGURE 19	1
13	64163-110	WASHER, 3/4" SAE FLAT	1
14	4170924	NUT, 3/4-10 STOVER SWAGED	1
15	64163-84	WASHER, 1-1/16" X 1-3/4" X 1/8"	2
16	64163-118	WASHER, 1/2" SAE FLAT	2
17	4170897	YOKE WELDMNT, PIVOTING	1
18	85010N	FITTING, 1/4-28 STRAIGHT GREASE	1
19	64123-31	BOLT, 1/2-13 X 3" HEX HEAD GRADE 5	1
20	64229-03	NUT, 3/8-16 HEX NYLOC	1
21	64163-61	WASHER, 3/8" FLAT SAE	2
22	64123-75	BOLT, 3/8-16 X 3" HEX HEAD GRADE 5	1
23	4170898	PIN, 1/2" DIA X 3 1/2" SNAP SPRING	1
24	4170757	BUSHING, URETHANE SPRING	1
25	64229-05	NUT, 1/2-13 NYLON HEX LOCK	1
26	4170894	YOKE ASSEMBLY, PIVOTING WHEEL (INCLUDES ITEMS 1, 16-25)	4

DECK 1 WLDMNT USES *FIGURE 7* WHEEL YOKE ASSY

DECK 2, DECK 3, & DECK 4 WLDMNTS USE *FIGURE 16* WHEEL YOKE ASSY

FIGURE 19



FLEX DECK MOWER

9"x3.5" WHEEL ASSY

FIGURE 19

ITEM	PART NO.	DESCRIPTION	QTY
1	64025-02	NUT, 5/16-18 HEX (TORQUE TO 145-170 IN-LBS)	4
2	64006-02	WASHER, 5/16" SPLIT LOCK	4
3	4170724	TIRE, CARLISLE RELIANCE NO-FLAT SMOOTH (NOT SOLD SEPARATELY)	1
4	4170732	SEAL, 1 1/8" ID TRB BEARING	2
5	4170731	BEARING, TAPERED ROLLER 3/4" ID	2
6	4170754	SPACER, 3/4" WHEEL BEARING	1
7	4170841	HUB, 9/11" DEMOUNTABLE	1
8	4170733	BEARING RACE INSERT, 3/4" TRB	2
9	38388	FITTING, 1/4-28 45 DEG. GREASE	1
10	4170724	WHEEL ASSEMBLY, 9" X 3.5" RELIANCE DM (INCLUDES ITEMS 1-9)	(X5)
11	4170875	HUB ASSEMBLY, 9/11" DEMOUNTABLE (INCLUDES ITEM 7-9)	1

NOTE: Wheels are shipped unlubricated from the factory. Insure proper lubrication, bearing preload-
ing, and torque specifications are met. Use Loctite on all bolts. Tighten hub nuts to 145-170 in-lbs.

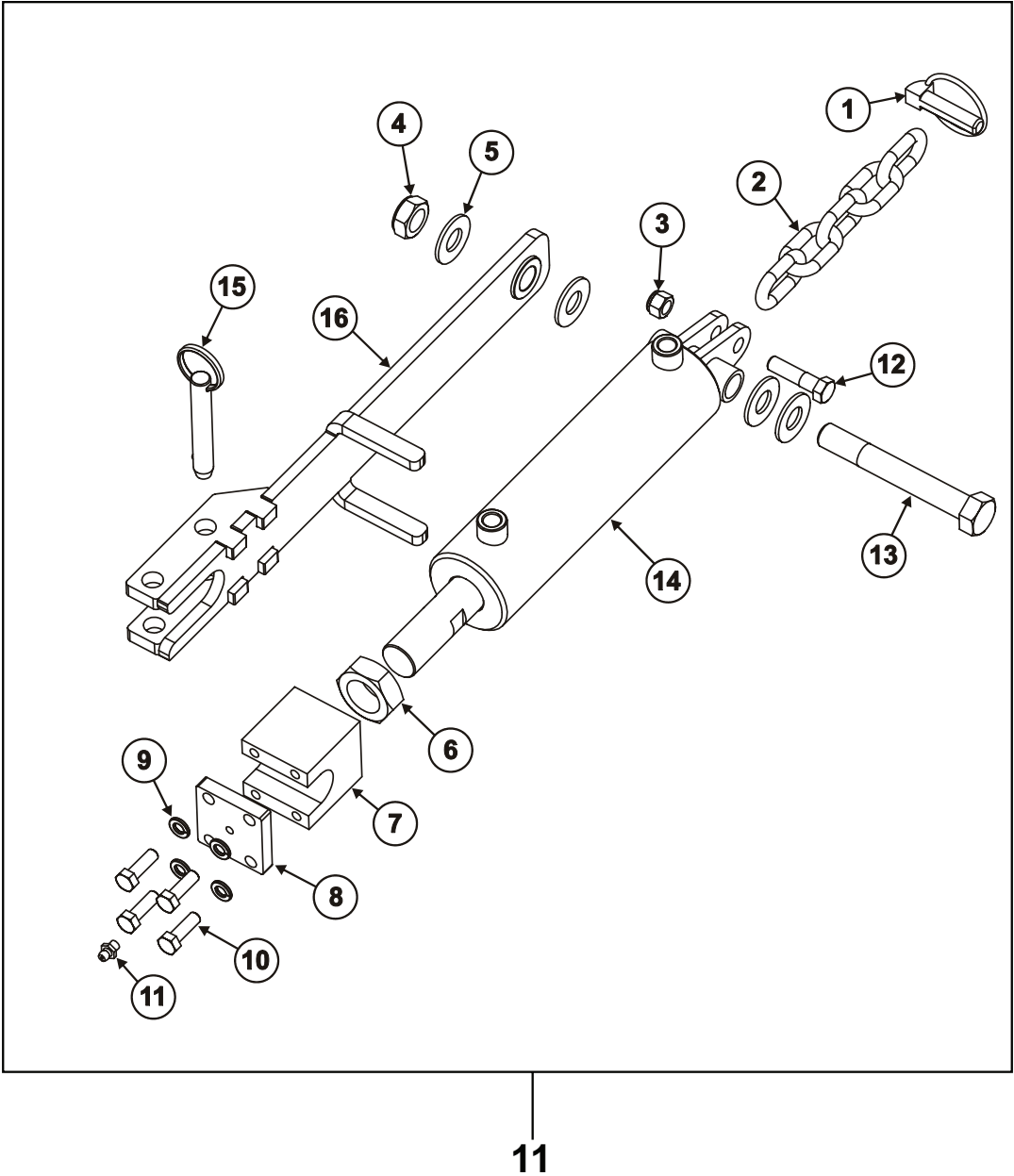
NOTE: All wheels should be lubricated, insuring grease passes through the seals, after every 8 hours
of operation. (See Section 5 of the Owner's Manual).

NOTE: When checking bearing preload, wheels should be placed on the spindles loose enough to spin
freely only one complete revolution when spun by hand. Insure spacers are properly installed.

DECK LIFT CYLINDER ASSY

FLEX
DECK
MOWER

FIGURE 20



FLEX DECK MOWER

DECK LIFT CYLINDER ASSY

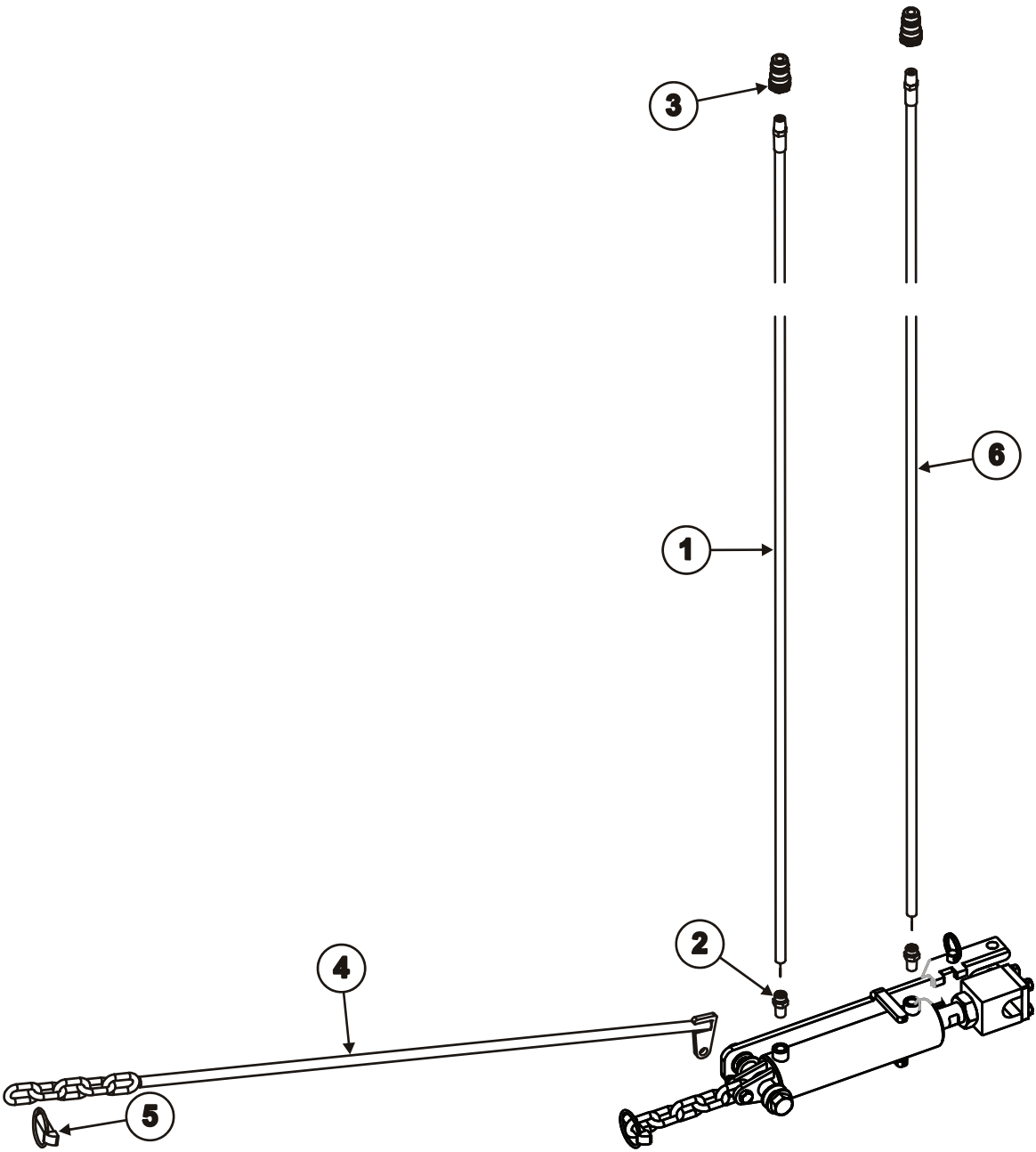
FIGURE 20

ITEM	PART NO.	DESCRIPTION	QTY
1	4170925	PIN, 7/16" DIA LYNCH, LOCKING	1
2	4170900	CHAIN, 5/16" X 5 LINKS	1
3	64229-03	NUT, 3/8-16 HEX NYLOC	1
4	64151-42	NUT, 5/8-11 JAM NYL LOCK	1
5	64163-119	WASHER, 5/8" SAE FLAT	4
6	64151-40	NUT, 1-14 HEX JAM	1
7	4170902	BLOCK, HYDRAULIC CYLINDER PIVOT	1
8	4170903	LOCK PLATE, HYDRAULIC CYLINDER	1
9	64006-02	WASHER, 5/16" SPLIT LOCK	4
10	64123-68	BOLT, 5/16-18 X 1" HEX HEAD GRADE 5	4
11	85010N	FITTING, 1/4-28 STRAIGHT GREASE	1
12	64123-87	BOLT, 3/8-16 X 1 3/4" HEX HEAD GRADE 5	1
13	64123-323	BOLT, 5/8-11 X 4 1/2" HEX HEAD GRADE 8	1
14	4170904	CYLINDER, HYDRAULIC DECK LIFT	1
15	4137069	PIN, 1/2" DIA X 2 1/2" DETENT	1
16	4170905	LOCK WELDMENT, DECK LATCH	1
17	4170899	CYLINDER ASSEMBLY, DECK LIFT (INCLUDES ITEMS 1-16)	1

HOSE ASSY AND LINK ROD

FLEX
DECK
MOWER

FIGURE 21

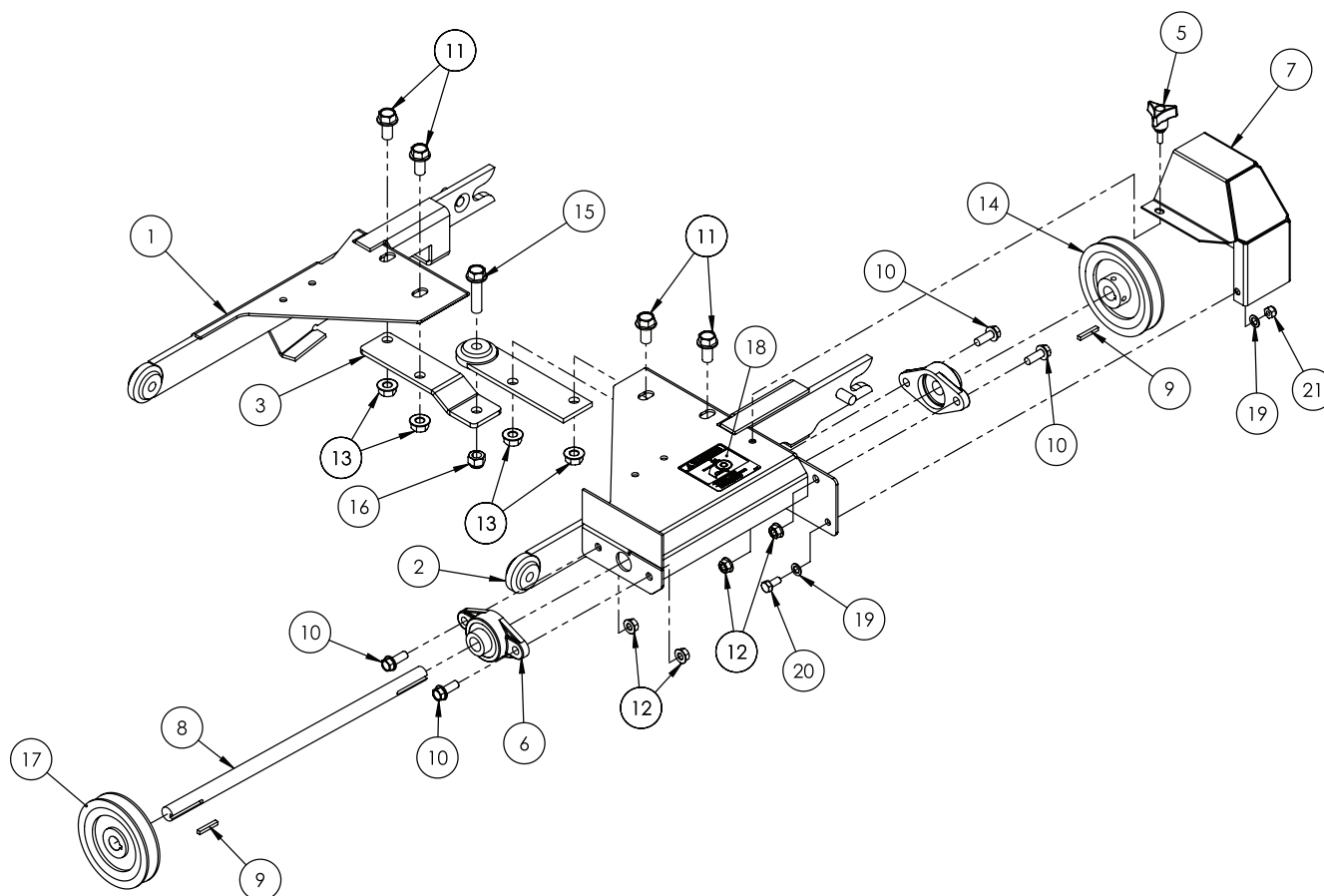


FLEX DECK MOWER

HOSE ASSY AND LINK ROD

FIGURE 21

ITEM	PART NO.	DESCRIPTION	QTY
1	4170727	HOSE ASSEMBLY, 1/4" HP X 80" LONG	1
2	4170906	HYD FITTING, 4 ORFS X 4 MPT ST	2
3	4170725	FITTING, HYDRAULIC QD MALE	2
4	4170907	ROD WELDMENT, DECK LIFT	1
5	4170925	PIN, 7/16" DIA LYNCH, LOCKING	1
6	4170729	HOSE ASSEMBLY, 1/4" HP X 76" LONG	1



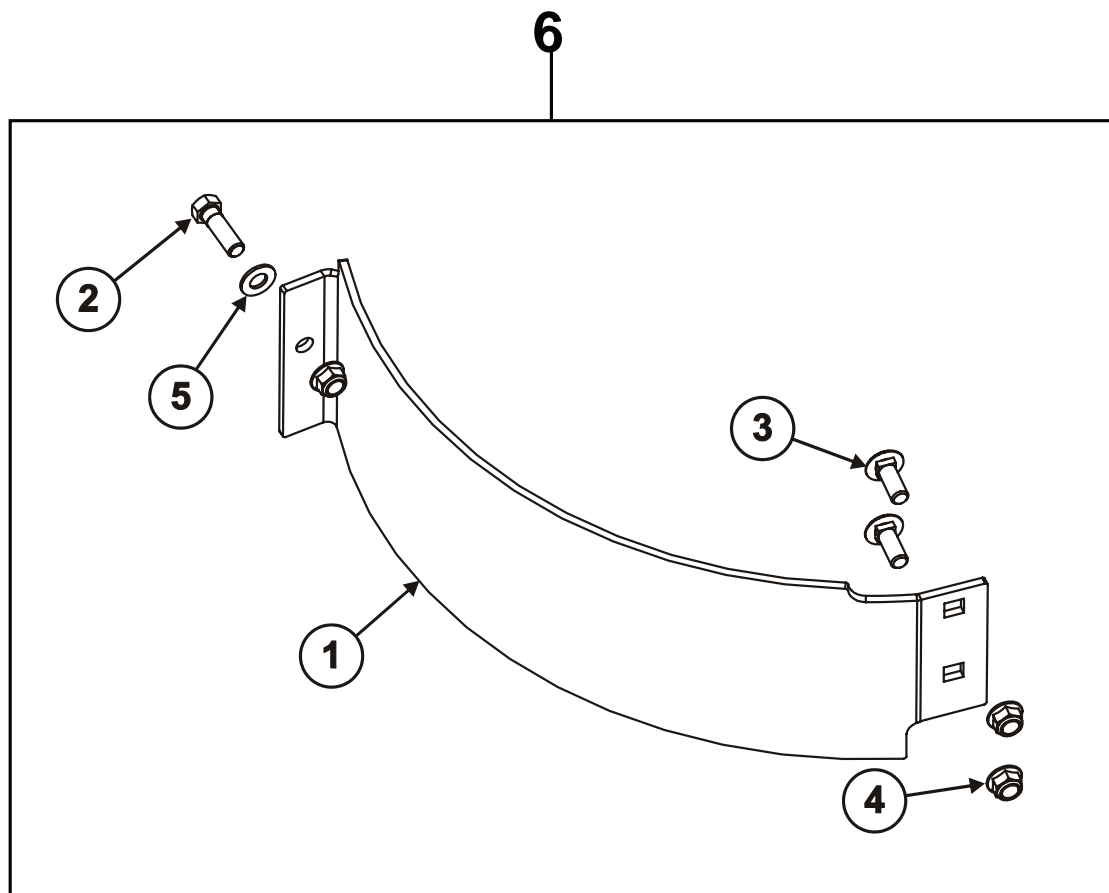
FLEX DECK MOWER

FLEX LIFT ARM ASSY

FIGURE 22

ITEM	PART NO.	DESCRIPTION	QTY
1	4170556.7	WLDMNT-HITCH ARM,RH	1
2	4170557.7	WLDMNT-HITCH ARM,LH	1
3	4170583.7	LINK-LIFT ARM,RH	1
4	4170584.7	WLDMNT-LINK,LIFT ARM LH	1
5	4170936	KNOB-3 PRONG,1/4-20 W/KEPS	1
6	55-FB23012	FLANGE BEARING 2-BOLT HUB CIT	2
7	64-611.7	SHIELD DRIVE PULLEY MD460	1
8	80-237	SHAFT MOWER DRIVE (ALL MD'S)	1
9	64164-02	KEY-3/16X3/16 X 1 SQ	2
10	64139-24	BLT-WLF 3/8-16 X 1	4
11	64139-22	BLT-WLF 1/2-13 X 1	4
12	64141-4	NUT-WLF 3/8-16	4
13	64141-13	NUT-WLF 1/2-13	4
14	83-BK5212	PULLEY-4.95 OD X .75 BORE	1
15	99-K82	BLT-WLF 1/2-13 X 2	1
16	64229-05	NUT-NYLON LOCK 1/2-13	1
17	83-BK5012	PULLY	1
18	2000577	DECAL, "ROTATING PARTS"	1
19	64163-04	WSHR 25/64X5/8X16GA	2
20	64123-54	BLT-HEX 5/16-18 X .75	1
21	64229-02	NUT-NYLON LOCK 5/16-18	1

FIGURE 23



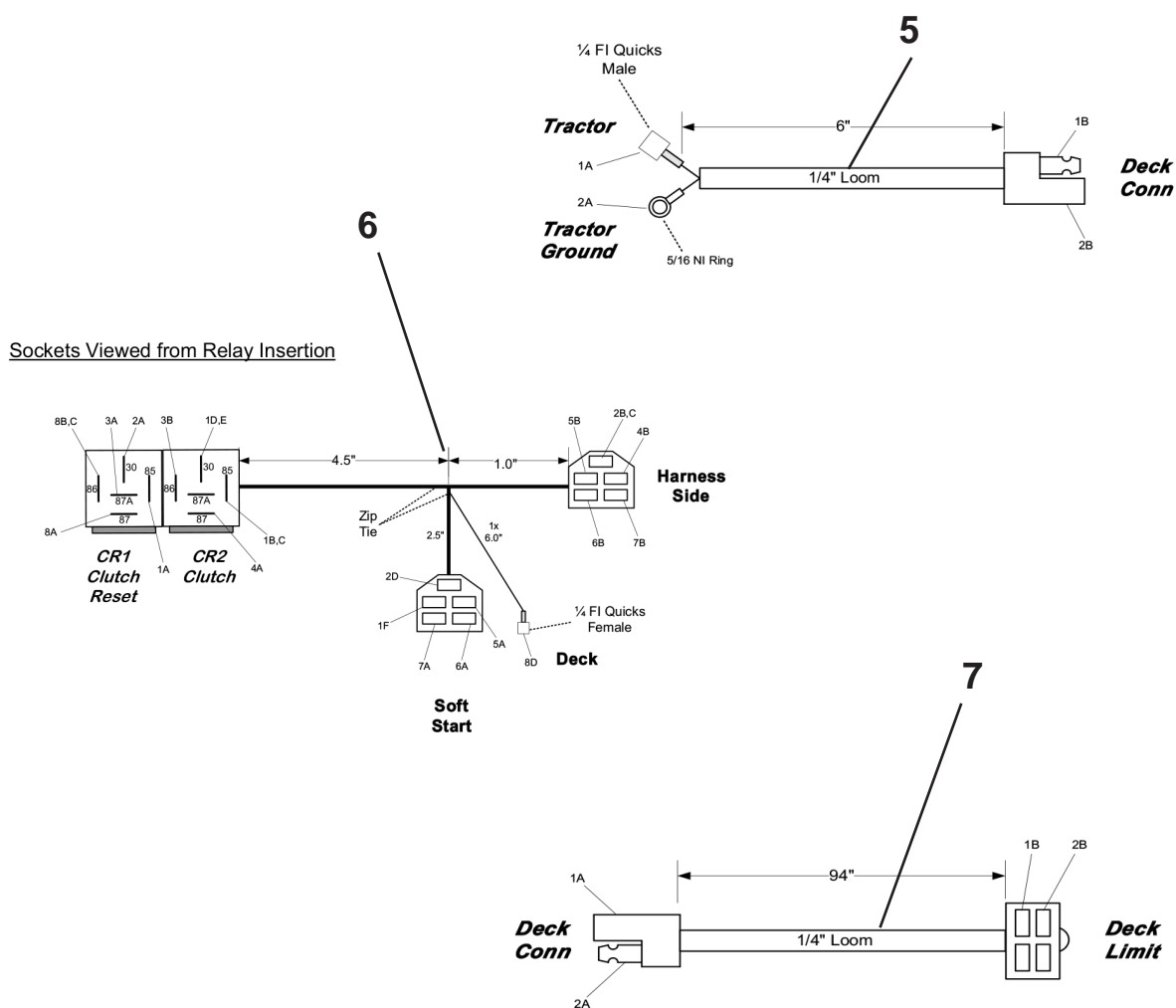
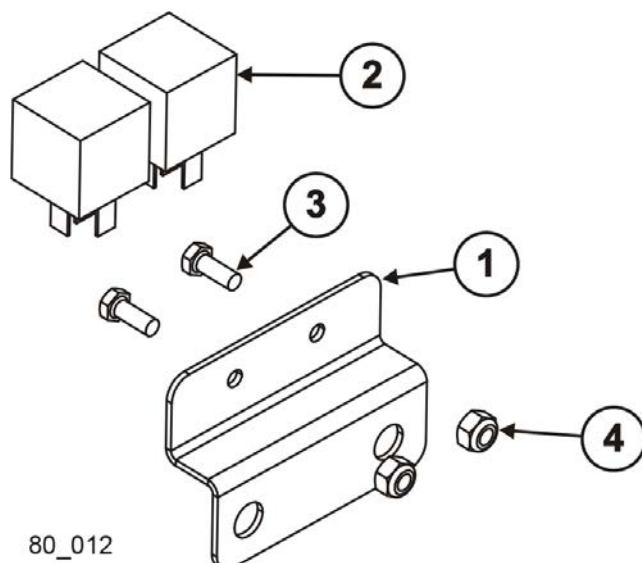
FLEX DECK MOWER

MULCHING BAFFLE KIT - 4170738

FIGURE 23

ITEM	PART NO.	DESCRIPTION	QTY
1	4170908	MULCHING BAFFLE, 80EFS	1
2	64123-16	BOLT, 3/8-16 X 1 1/4" HEX HEAD GRADE 5	1
3	64018-3	BOLT, 3/8-16 X 1" CARRIAGE GRADE 5	2
4	64268-03	NUT, 3/8-16 FLANGED HEX NYLON LOCK	3
5	64163-61	WASHER, 3/8" SAE FLAT	1
6	4170738	BAFFLE KIT, 80EFS MULCHING (INCLUDES ITEMS 1-5)	1

FIGURE 24



FLEX DECK MOWER

WIRE HARNESS ASSEMBLIES

FIGURE 24

ITEM	PART NO.	DESCRIPTION	QTY
1	4170785	MOUNTING BRACKET, 80EFS RELAY	1
2	4170723	RELAY, 40A 12V AUTOMOTIVE	2
3	64152-46	SCREW, 10-24 X 1/2" HH SS MACHINE	2
4	64229-10	NUT, #10-24 HEX SELF-LOCKING	2
5	4170786	HARNESS ASSEMBLY, 80EFS AUX	1
6	4170787	HARNESS ASSEMBLY, 80EFS MAIN	1
7	4170750	HARNESS ASSEMBLY, 80EFS DECK	1
8	4170728	HARNESS ASSEMBLIES,80EFS (INCLUDES ITEMS 1-6)	1

SCHILLER GROUNDS CARE, INC.
ONE BOB-CAT LANE
P.O. BOX 469
JOHNSON CREEK, WI 53038
920-699-2000
www.schillergc.com



©Schiller Grounds Care, Inc. 2010