

# ***LITTLE WONDER®***

## ***PRO VAC SP***

**MODELS:**  
**5612-12-59 HONDA GX270**



MAN 4171084  
Rev A. 07-2014  
Original Language Instructions

Operators Manual 4171085

**SET-UP / PARTS MANUAL**

**CALIFORNIA**

**Proposition 65 Warning**

Diesel engine exhaust and some of its constituents are known to the State of California to cause cancer, birth defects and other reproductive harm.

**⚠ WARNING**

The engine exhaust from this product contains chemicals known to the State of California to cause cancer, birth defects or other reproductive harm.

**CALIFORNIA**

**Proposition 65 Warning**

Battery posts, terminals, wiring insulation, and related accessories contain lead and lead compounds, chemicals known to the State of California to cause cancer and birth defects or other reproductive harm.

**WASH HANDS AFTER HANDLING.**

## IMPORTANT MESSAGE

Thank you for purchasing this Schiller Grounds Care, Inc. product. You have purchased a world class product, one of the best designed and built anywhere.

This machine comes with an Operation and Safety Manual, Parts and Service Manual, and Engine Manual. The useful life and good service you receive from this machine depends to a large extent on how well you read and understand these manuals. Treat your machine properly, lubricate and adjust it as instructed, and it will give you many years of reliable service.

Your safe use of this Schiller Grounds Care, Inc. product is one of our prime design objectives. Many safety features are built in, but we also rely on your good sense and care to achieve accident-free operation. For best protection, study the manuals thoroughly. Learn the proper operation of all controls. Observe all safety precautions. Follow all instructions and warnings completely. Do not remove or defeat any safety features. Make sure those who operate this machine are as well informed and careful in its use as you are.

See a Schiller Grounds Care, Inc. dealer for any service or parts needed. Schiller Grounds Care, Inc. service ensures that you continue to receive the best results possible from Schiller Grounds Care, Inc. products. You can trust Schiller Grounds Care, Inc. replacement parts because they are manufactured with the same high precision and quality as the original parts.

Schiller Grounds Care, Inc. designs and builds its equipment to serve many years in a safe and productive manner. For longest life, use this machine only as directed in the manuals, keep it in good repair and follow safety warnings and instructions. You'll always be glad you did.

**Schiller Grounds Care, Inc.**  
**1028 Street Road**  
**Southampton, PA 18966-4217**  
**PHONE 877-596-6337 • FAX 215-357-8045**

TABLE OF CONTENTS	FIGURES	PAGE
SAFETY.....		4-6
SET-UP INSTRUCTIONS.....		7-8
CONTROLS.....		9
MAINTENANCE .....		10
STORAGE .....		11
TROUBLESHOOTING .....		12
PARTS SECTION .....		13
NOZZLE / WHEEL ASSEMBLY .....	FIGURE 1 .....	14-15
FAN / ENGINE ASSEMBLY .....	FIGURE 2 .....	16-17
MAIN FRAME ASSEMBLY .....	FIGURE 3 .....	18-19
HANDLE ASSEMBLY .....	FIGURE 4 .....	20-21
WARRANTY .....		BACK COVER



This Operator / Parts Manual is part of the machine. Suppliers of both new and second-hand machines must make sure that this manual is provided with the machine.

**NOTICE !!!**

Unauthorized modifications may present **extreme** safety hazards to operators and bystanders and could also result in product damage.

Schiller Grounds Care, Inc. strongly warns against, rejects and disclaims any modifications, add-on accessories or product alterations that are not designed, developed, tested and approved by Schiller Grounds Care, Inc. Engineering Department. Any Schiller Grounds Care, Inc. product that is altered, modified or changed in any manner not specifically authorized after original manufacture-including the addition of "after-market" accessories or component parts not specifically approved by Schiller Grounds Care, Inc. will result in the Schiller Grounds Care, Inc. Warranty being voided.

Any and all liability for personal injury and/or property damage caused by any unauthorized modifications, add-on accessories or products not approved by Schiller Grounds Care, Inc. will be considered the responsibility of the individual(s) or company designing and/or making such changes. Schiller Grounds Care, Inc. will vigorously pursue full indemnification and costs from any party responsible for such unauthorized post-manufacture modifications and/or accessories should personal injury and/or property damage result.



This symbol means:  
**ATTENTION!**  
**BECOME ALERT!**

Your safety and the safety of others is involved.

**Signal word definitions:**

The signal words below are used to identify levels of hazard seriousness. These words appear in this manual and on the safety labels attached to Schiller Grounds Care, Inc. machines. For your safety and the safety of others, read and follow the information given with these signal words and/or the symbol shown above.

**⚠ DANGER**

**DANGER** indicates an imminently hazardous situation which, if not avoided, **WILL** result in death or serious injury.

**⚠ WARNING**

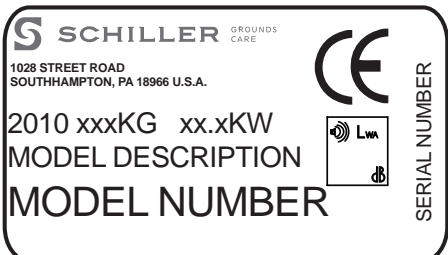
**WARNING** indicates a potentially hazardous situation which, if not avoided, **COULD** result in death or serious injury.

**⚠ CAUTION**

**CAUTION** indicates a potentially hazardous situation which, if not avoided, **MAY** result in minor or moderate injury. It may also be used to alert against unsafe practices or property damage.

**CAUTION**

**CAUTION** used without the safety alert symbol indicates a potentially hazardous situation which, if not avoided, **MAY** result in property damage.

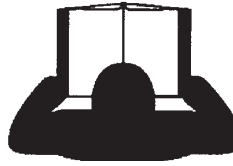


**MODEL NUMBER:** This number appears on sales literature, technical manuals and price lists and serial tag.

**SERIAL NUMBER:** This number appears only on your unit. It contains the model number followed consecutively by the serial number. Use this number when ordering parts or seeking warranty information.

## OPERATOR PREPARATION AND TRAINING

### READ THE OPERATION & SAFETY MANUAL



- If an operator or mechanic cannot read English, it is the owner's responsibility to explain this material to them. If any portion of this material is unclear, contact your factory representative for clarification.
- Become familiar with the safe operation of the equipment, operator controls and safety signs. Be prepared to stop the engine quickly in an emergency. Do not operate or allow another person to operate this machine if there are any questions about safety.
- All operators and mechanics should be trained. The owner is responsible for training the users.
- Wear appropriate clothing, including safety goggles or safety glasses with side shields when operating. Wear substantial footwear and long pants. Do not operate barefoot or wearing open sandals. Long hair, loose clothing or jewelry may get tangled in moving parts.
- Wear appropriate hearing protection.
- Wear safety glasses.
- Wear a dust mask to avoid breathing dust.
- Never allow children, unskilled or improperly trained people to operate this equipment. Local regulations can restrict the age of the operator.
- Never pick up or carry the unit while the engine is running.
- Keep warning labels and this operator's manual legible and intact. Replacement labels and manuals are available from the factory.
- Do not operate machine while under the influence of drugs or alcohol, or any other condition of impairment.
- The owner/user can prevent and is responsible for accidents or injuries occurring to themselves, other people, or property.

### SITE PREPARATION AND CIRCUMSTANCES

- Evaluate the terrain to determine how to safely perform the job. Only use accessories and attachments approved by the manufacturer.
- Be sure the area is clear of pets and people, especially young children. Never assume they will remain where you last saw them. Stop the machine if any enter the area.
- Only vacuum in daylight or in good artificial light.
- Keep in mind that the operator or user is responsible for accidents or hazards occurring to other people or their property.

### MULTIPLE OPERATORS

- Keep a safe distance between operators when working together.

### MACHINE PREPARATION

- Read engine manual.
- Check operator presence interlock system. Adjust or have any problems repaired before using.
- Damage to the engine can occur if there is no oil or oil level is low. Check the oil level and add oil per engine manual as necessary.
- Do not tamper with or defeat safety devices. Keep guards, shields and interlock safety devices in place and in proper working condition. They are for your protection.
- Keep all fasteners such as nuts, bolts, and pins well secured.
- Verify that machine and attachments, if any, are in good operating condition.

## MAINTENANCE SAFETY

### In general

- Maintain machine according to manufacturer's schedule and instructions for maximum safety and best results.
- Park machine on level ground.
- Never allow untrained personnel to service machine.
- Guards should only be removed by a qualified technician for maintenance or service. Replace when work is completed.
- Adjust or repair only after the engine has been stopped and the blade has stopped moving.
- Disconnect spark plug wire(s) before doing any maintenance.
- Replace parts if worn, damaged or faulty. For best results, always replace with parts recommended by the manufacturer.
- Do not dismantle the machine without releasing or restraining forces which may cause parts to move suddenly.
- Provide adequate support, e.g. jack stands for lifted machine or parts if working beneath.
- Do not put hands or feet near or under rotating parts.
- Clean up spilled oil or fuel thoroughly.
- Replace faulty mufflers.
- To reduce fire hazards, keep the engine, muffler, and fuel storage area free of grass, leaves, debris buildup or grease.
- Never attempt to make adjustments while the engine is running except for repairs or adjustments as specifically noted, such as for carburetor adjustment, where the engine must be running. Keep hands and feet clear of moving parts in these circumstances.

### Fans

Do not straighten or weld fans.  
Replace damaged or failed fans.



**WARNING**

## Fuel



**WARNING**



- Petrol (gasoline) is flammable; petrol (gasoline) vapors are explosive. Use extra care when handling.
  - Store only in containers specifically designed for fuel.
  - When refueling or checking fuel level:
    - Stop the engine and allow to cool;
    - Do not smoke;
    - Refuel outdoors only;
    - Use a funnel;
    - Do not overfill;
    - If fuel is spilled, do not attempt to start the engine until the spill is cleaned up and vapors have cleared.
  - Replace caps on fuel containers and tanks securely.
- Sparks from static electricity can start fires or cause explosions. Flowing fuel can generate static electricity. To prevent static electricity sparks:
- Keep containers electrically grounded. Do not fill containers in a vehicle or on a truck or trailer bed with a plastic liner. Fill containers on the ground away from the vehicle.
  - When practical, remove petrol (gasoline) powered equipment from the truck or trailer and refuel it on the ground. If equipment must be refueled on the truck or trailer, refuel from a portable container rather than a dispenser nozzle.
  - Keep the dispenser nozzle in contact with the rim of the fuel tank or container opening until fueling is complete. Do not use a nozzle lock-open device.
  - If fuel is spilled on clothing change it immediately.

## STORAGE SAFETY

- Stop the engine and allow to cool before storing.
- Drain the fuel tank outdoors only.
- Store fuel in an approved container in a cool, dry place.
- Keep the machine and fuel containers in a locked storage place to prevent tampering and to keep children from playing with them.
- Do not store the fuel container or equipment with gasoline in the tank inside a building where fumes may reach an open flame or spark.
- Appliances such as furnaces and water heaters with a pilot light have an open flame.
- Keep petrol (gasoline) storage area free of grass, leaves and excessive grease to reduce fire hazard.
- Clean grass and debris from cutting units, drives, mufflers and engine to help prevent fires.
- Clean up any spilled gasoline or oil in the storage area.

# PRO VAC SP

## UNPACKING THE UNIT

1. Break down top and sides of crate.
2. Cut off tiedowns.
3. Roll VAC off of the pallet.

## ASSEMBLY (See Figures on page 8)

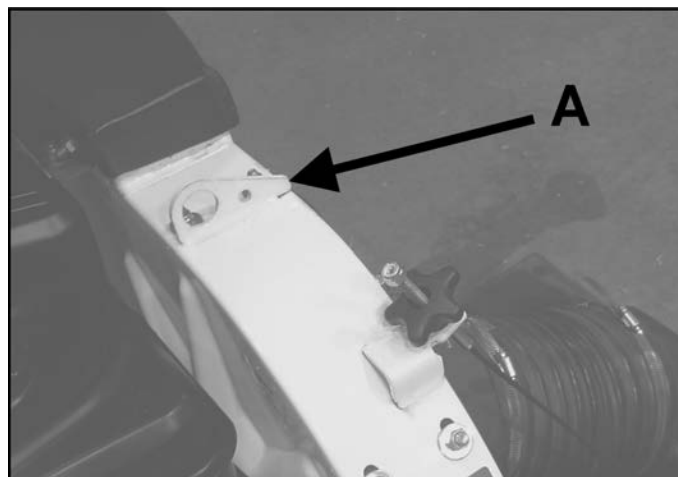
1. Install the **band clamp** into the **debris bag** (wear gloves when handling band clamp):
  - Slide the bracket end of the band clamp through the left side opening of the sleeve on the debris bag until it emerges from the right side.
  - Feed the tail end of the band (on the clasp side) behind the bracket in the sleeve.
  - Pinch the wire form on the clasp together and connect it through two holes in the adjustment bracket such that it will close tightly over the collector.
2. Connect the **debris bag** by placing it over the bottom lip of the **collector** and closing the clasp to secure the bag. Adjust the clasp wire form to the appropriate hole position on the bracket to ensure a tight fit. If the bag will not fit tight within the range of the three adjustment holes, insert the bag **seal strap**:
  - Unhook the wire form from the bracket.
  - Pull the tail end of the band back out from behind the bracket.
  - Feed one end of the **seal strap** behind the metal band and through the channel to the other side.
  - Tuck the other end of the **seal strap** behind the bracket (overlapping the lead end of the **seal strap**).
  - Feed the tail end of the **band clamp** behind the bracket (overlap the **seal strap**).
  - Connect the wire form to the appropriate holes in the bracket and secure the debris bag to the collector.
3. Attach **nozzle assembly** to base unit:
  - Attach one end of the **hose** to the nozzle assembly with the **bridge clamp**.
  - Slide the other end of the **hose** over the edge of the inlet on the **front plate**.
  - Remove cotter pins from front wheel bracket. Hook one side of the **nozzle bracket** over the front axle.
  - Bend the other end of the nozzle bracket inward to hook it over the axle and the pins on the **wheel bracket** with the slots on the **nozzle bracket**. Reinsert the **cotter pins**.
  - Secure the hose to **front plate** inlet with the **bridge clamp**.
  - Attach the **nozzle cable** end fitting through the hole in the **nozzle bracket**.

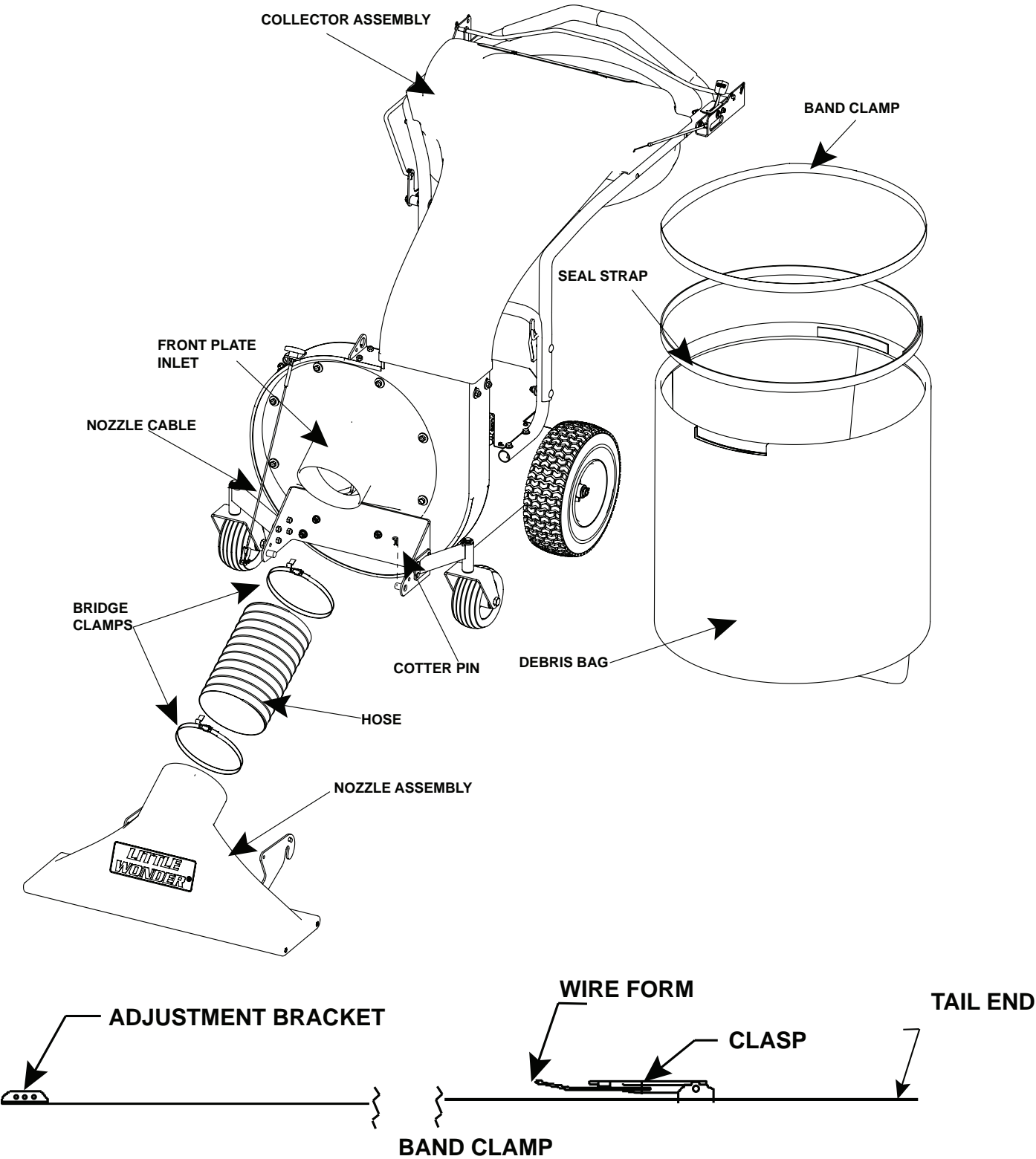
4. To remove **nozzle assembly** (for purposes of storage, or clearing blockages):

- Turn engine off and disconnect spark plug.
- Loosen **hose clamp** on the **front plate** with flathead screwdriver or 5/16 wrench.
- Slide hose off of **front plate** inlet.
- Remove the **cotter pins** on the front wheel bracket. Bend one side of **nozzle bracket** inward and twist the **assembly** to remove the hook from the axle.
- Twist back and lift to remove the other side of **nozzle bracket** from the axle. Re insert the **cotter pins** on the front wheel bracket.

## LIFTING LUG

The Little Wonder PRO Vac includes a convenient lifting lug **A** on top of the fan housing that can be used to lift the unit.





## THROTTLE (A)

Controls engine speed and vacuum suction level.

## CHOKE (B)

Move to the "CHOKE" position to apply the choke.  
Move to the "RUN" position to remove the choke.

## FUEL SHUT OFF (C)

Move to the "OFF" position to shut off the fuel whenever transporting the machine by trailer or truck or during storage. Move to the "ON" position before starting the engine. The "OFF" position also can be used to "KILL" the engine as a "KILL" switch is combined with the fuel shutoff.

## ADJUSTING KNOB (D)

Adjusts nozzle height.

## RECOIL STARTER HANDLE (E)

Pull to turn over the engine to start it. Guide the recoil starter handle back to the rope guide for best rope life. Allowing the rope to snap back will shorten rope life.

## ENGINE SWITCH (F)

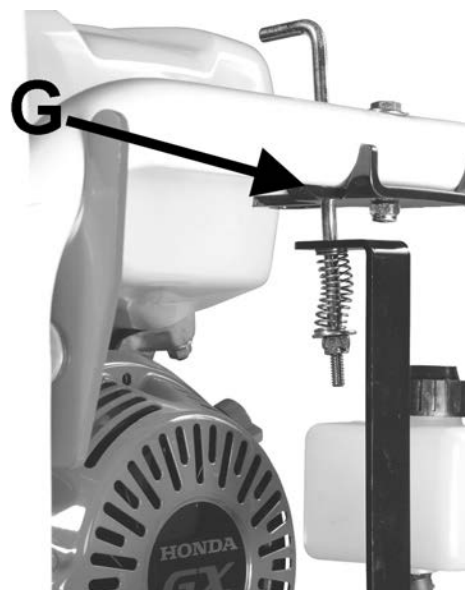
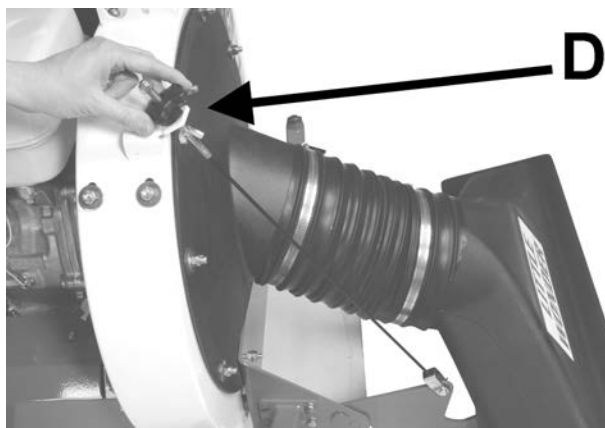
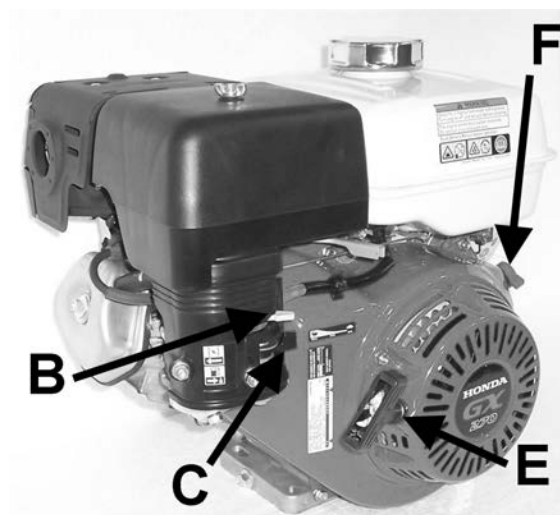
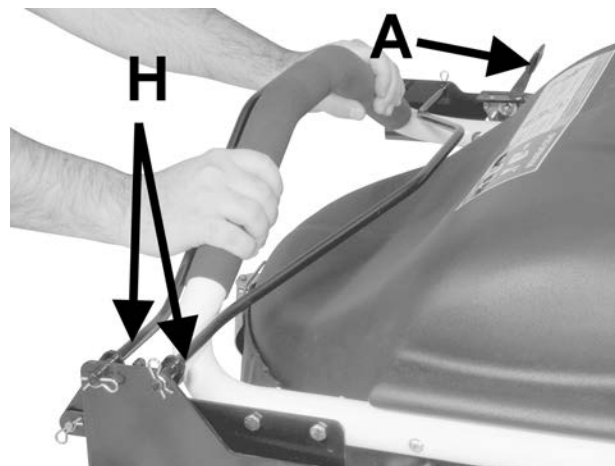
Move to the "OFF" position to stop the engine. Move to the "ON" position before starting engine.

## FREE WHEEL ROD (G)

Pull the free-wheel rod until the enlarged boss comes through the keyhole on the free-wheel bracket, then slide the rod down the slot to latch it to free wheel or push the machine without the engine running. Raise the rod until the enlarged boss pops back behind the bracket to engage the transmission.

## BAIL (H)

Push the bail towards the handle to move the vacuum forward. Pull the bail back to move in reverse.



## MAINTENANCE



### WARNING

Stop the engine and remove spark plug wire before performing any maintenance.

When replacement parts are required, use genuine Schiller Grounds Care, Inc. parts or parts with equivalent characteristics, including type, strength and material. Failure to do so may result in product malfunction and possible injury to the operator and/or bystanders.

Carbon monoxide present in the exhaust is an odorless and deadly gas. Never start or run the engine where exhaust fumes can collect. Provide enough fresh air to keep fumes from getting too strong.

Replace any warning decals that become illegible immediately.

### DAILY MAINTENANCE

After each use, run the vac with an empty bag to clear any material that may remain in the housing.

### BELTS

- Check condition of belts for damage or wear.
  - Replace broken, worn, or damaged belts.
1. Make sure the engine is off, spark plug is removed, and before checking belts.
  2. Remove any debris such as leaves, grass, sticks or other build up that might cause a fire or damage.
  3. Inspect the belt and pulleys for damage or wear that could cause problems. Replace damaged or worn parts with Schiller Grounds Care, Inc. parts.

### HARDWARE

- Tighten any hardware (nuts, bolts, etc) that are found loose.
- Replace any broken or missing hardware (nuts, bolts, cotter pins, etc.).
- 
- 

### GUARDS

- Check condition of guards for damage or wear.
- Replace broken, worn, or damaged guards.

### ENGINE

See engine manual for air cleaner service intervals and servicing procedure.

Keep the engine's cooling air intake clear of debris for best performance.

Clean air cleaner daily. See engine manual for details.

### OIL

Check oil level daily. Top off as needed.

Change engine oil after the first 5 hours of operation. Then change as recommended by the engine manufacturer.

1. Remove the drain plug and drain oil while engine is warm.
2. Replace the drain plug, remove fill plug and fill with new oil. Little Wonder recommends SAE 30 oil whenever applicable.
3. Wipe off any oil on unit.
4. Start and run engine for 30 seconds. Stop engine.
5. Wait 30 seconds, then re-check oil level.
6. Top off as necessary. See engine manual for details.
7. Check the transmission tank level daily. Add 20W-50 if necessary.

## STORAGE

To prevent possible explosion or ignition of vaporized fuel, do not store equipment with fuel in tank or carburetor in an enclosure with open flame (for example, a furnace or water heater pilot).

## DAILY STORAGE

1. Stop the engine and engage the parking brake.
2. Check engine oil level and air filter element.
3. Close fuel valve located below air cleaner to keep fuel from draining into engine.
4. Remove any material stuck under the deck.

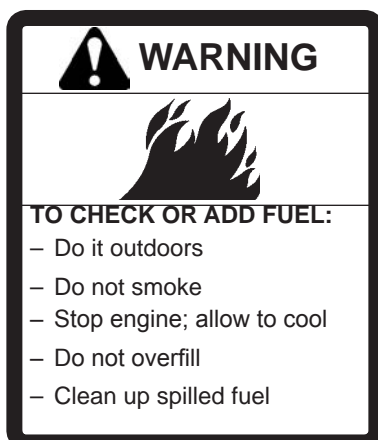
## EXTENDED STORAGE

**Before the equipment is put into storage for any period exceeding 30 days:**

1. Drain all fuel from the fuel tank and fuel lines.
2. Start the engine and run until all the fuel is used from the carburetor float bowl.
3. While the engine is still warm drain the oil. Refill with the proper weight oil corresponding to what the engine manual says.
4. Remove the spark plug and squirt a small amount of engine oil into the cylinder.
5. Clean and oil cutting blades to prevent rust.

**To put equipment into operation after an extended storage:**

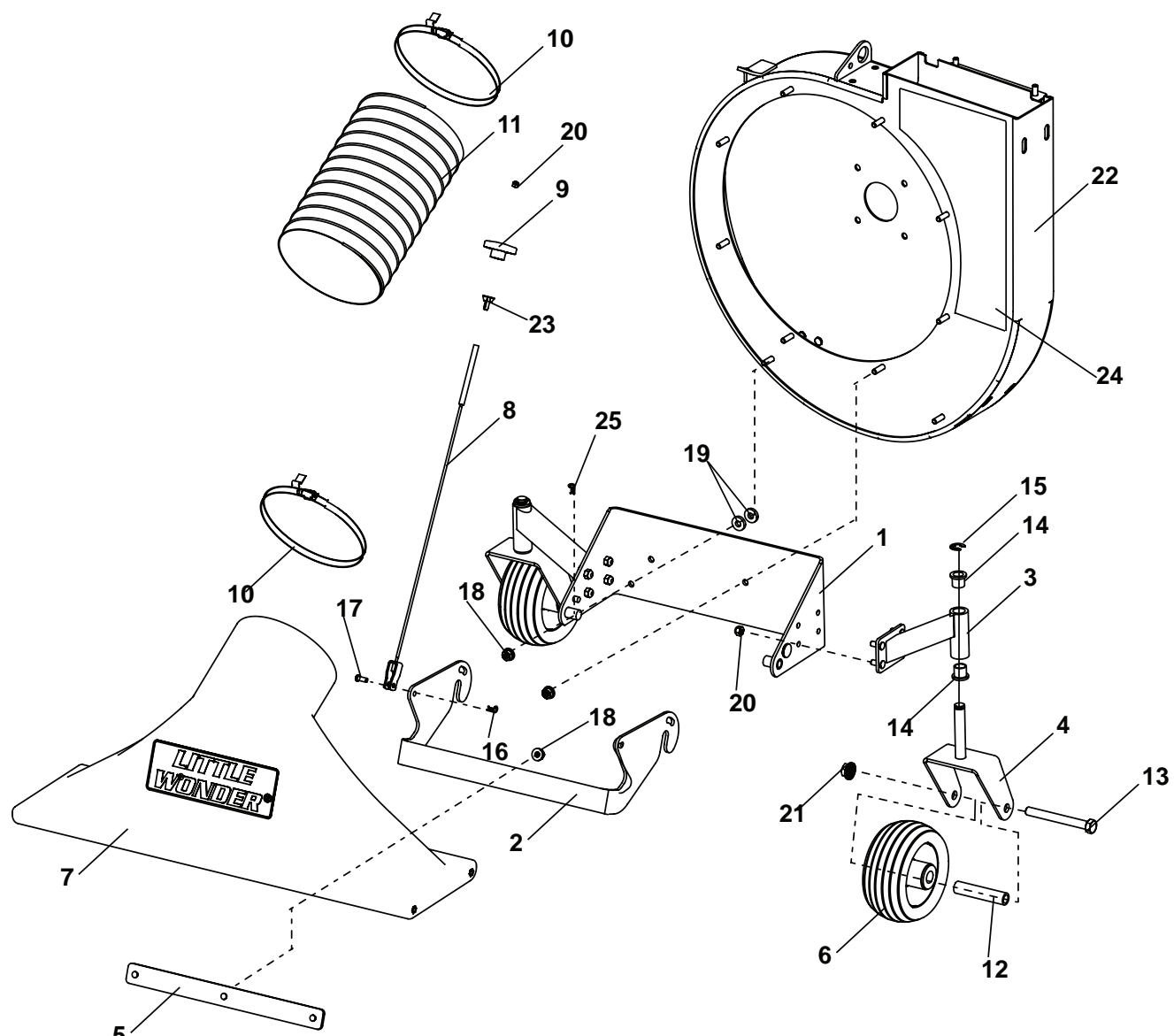
1. Check for loose parts, tighten if necessary.
1. Fill fuel tank with clean fresh fuel.
2. Check oil level and add if necessary.
3. Check fuel lines and system for leaks. Repair any leaks before operating
4. Start the engine and proceed to operate for the intended use.



<b><i>TROUBLESHOOTING</i></b>	
<b><i>COMMON PROBLEMS</i></b>	<b><i>COMMON CAUSES</i></b>
<b>ENGINE WILL NOT START.</b>  (Check the Engine Manual for more details.)	<ul style="list-style-type: none"> <li>• Refer to the section "Operation" in this manual to verify engine starting procedure.</li> <li>• Check the spark plug connection.</li> <li>• Check that throttle lever is set to the "FAST" position and the choke is "ON".</li> <li>• Check the level of fuel</li> <li>• Check fuel valve is "ON".</li> </ul>
<b>ENGINE STARTS BUT DOES NOT RUN PROPERLY OR HAS NO POWER.</b>  (Check the Engine Manual for more details.)	<ul style="list-style-type: none"> <li>• Make sure the throttle lever is not set to the slow setting or the choke still in the "ON" position.</li> <li>• Turn the machine off and check the air filter. If it is dirty clean or replace it according to the Engine Manual.</li> <li>• Check the oil level in the engine. Add if necessary. If the oil is too full drain the oil to the proper level.</li> <li>• Check to make sure there is enough fuel. Also make sure the fuel is not old, dirty or the machine has not been stored beyond a month with the same fuel in it.</li> <li>• If the engine still has problems contact your dealer for service.</li> </ul>
<b>ENGINE HAS SMOKE COMING FROM IT.</b>  (Check the Engine Manual for more details.)	<ul style="list-style-type: none"> <li>• Check to make sure the machine is not running on "CHOKE"</li> <li>• Check to make sure the oil is not overfilled.</li> <li>• Check the air filter for debris and clean if necessary.</li> <li>• Check the engine for debris build up around the exhaust system.</li> <li>• <b>MAKE SURE THE ENGINE HAS HAD THE PROPER TIME TO COOL BEFORE TOUCHING HOT PARTS.</b></li> <li>• If there is still smoke coming from the engine contact the nearest dealer for service.</li> </ul>
<b>ENGINE RUNS AND STARTS BUT THE MACHINE WILL NOT GO FORWARD OR IN REVERSE.</b>	<ul style="list-style-type: none"> <li>• Check that the free wheel lever is pulled out.</li> <li>• Check to make sure the direction lever is being pressed far enough down or pulled up to make the machine move.</li> <li>• With the engine off and check the transaxle belt is not broken or fallen off the pulley. Replace belt if necessary.</li> <li>• Make sure nothing is lifting the machine up off the wheels.</li> </ul>
<b>MACHINE IS DIFFICULT TO GET INTO REVERSE OR FORWARD.</b>	<ul style="list-style-type: none"> <li>• Check linkage for free operation.</li> </ul>
<b>THE BELT IS FRAYED OR KEEPS COMING OFF THE PULLEY.</b>	<ul style="list-style-type: none"> <li>• Check the pulley to make sure it is free from damage such as a nick or crack. If the pulley feels rough call a dealer for service and a replacement pulley.</li> <li>• Check the belt for wear and damaged spots. If there are signs of damage or wear on the belt, replace with the correct type of belt.</li> <li>• Check the belt tension. If V-belts are under tensioned, they can slip. Slippage generates heat and will result in cracking and belt failure. Properly tensioning and aligning a belt drive will allow the belt drive to perform at it's maximum level. If belts are over-tensioned, belt and bearing life can be reduced.</li> <li>• If the belt and pulley appear to be in good condition, contact your dealer for service.</li> </ul>

# PARTS SECTION

**FIGURE 1**



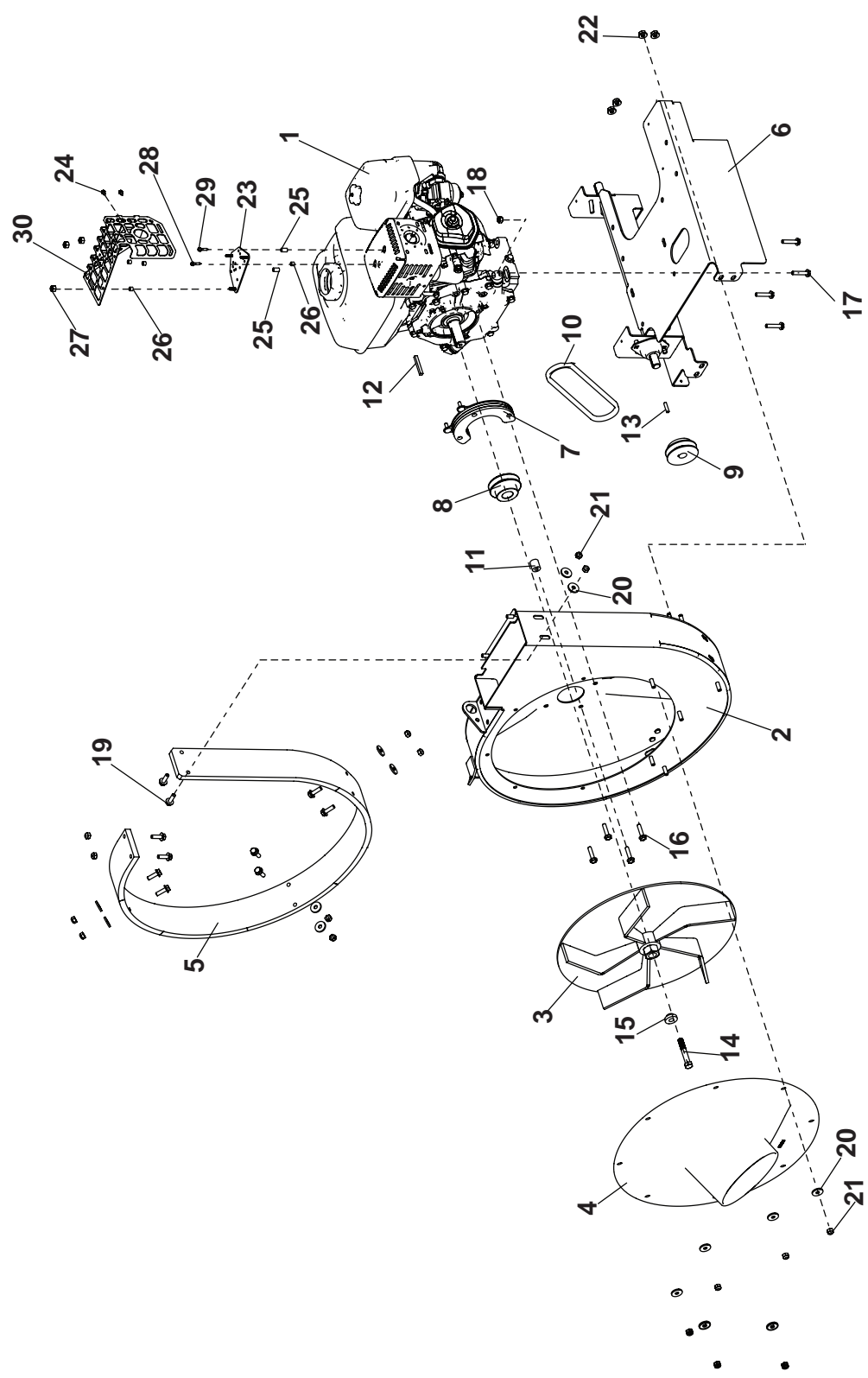
# PRO VAC SP

## NOZZLE / FRONT WHEEL ASSEMBLY

FIGURE 1

ITM	PART NO.	DESCRIPTION	QTY	ITM	PART NO.	DESCRIPTION	QTY
1	4169692.17	WLDMT - BRACKET FRONT	1				
2	600183.17	NOZZLE BRACKET	1				
3	4169483.17	CASTER SUPPORT	2				
4	4169484.17	CASTER YOKE - PRO VAC	2				
5	600133.7	ASSY-NOZZLE CLAMP PLA	1				
6	4170312	CASTER WHEEL 6.25X3	2				
7	600100	NOZZLE	1				
8	4165925	CABLE-VAC NOZZLE	1				
9	600162	KNOB, 5/16-18, FEMALE	1				
10	720420	14" HOSE CLAMP	2				
11	600102	HOSE, 7"D x 11" LG	1				
12	50-104	AXLE CASTER WHEEL	2				
13	64123-286	BLT-HEX 1/2-13 X 4-1/2	2				
14	600287	BUSHING, FLANGED	4				
15	600562	RETAINING RING E 5/8	2				
16	64168-2	COTTER-HAIRPIN .08X1.19	1				
17	64188-65	PIN CLEVIS 1/4X.62	1				
18	64141-6	NUT-WLF 5/16-18	7				
19	64163-46	WSHR.383/.393X.88X7GA	4				
20	64229-02	NUT-NYLON LOCK 5/16-18	9				
21	64141-13	NUT WLF 1/2-13	2				
22	4171119	S- HOUSING PROVAC SP	1				
23	64214-01	NUT-WING 5/16-18	1				
24	4171002	LABEL VAC HOUSING	1				
25	C500092	PIN, HAIR PIN COTTER	2				

FIGURE 2



# PRO VAC SP

## FAN ASSEMBLY

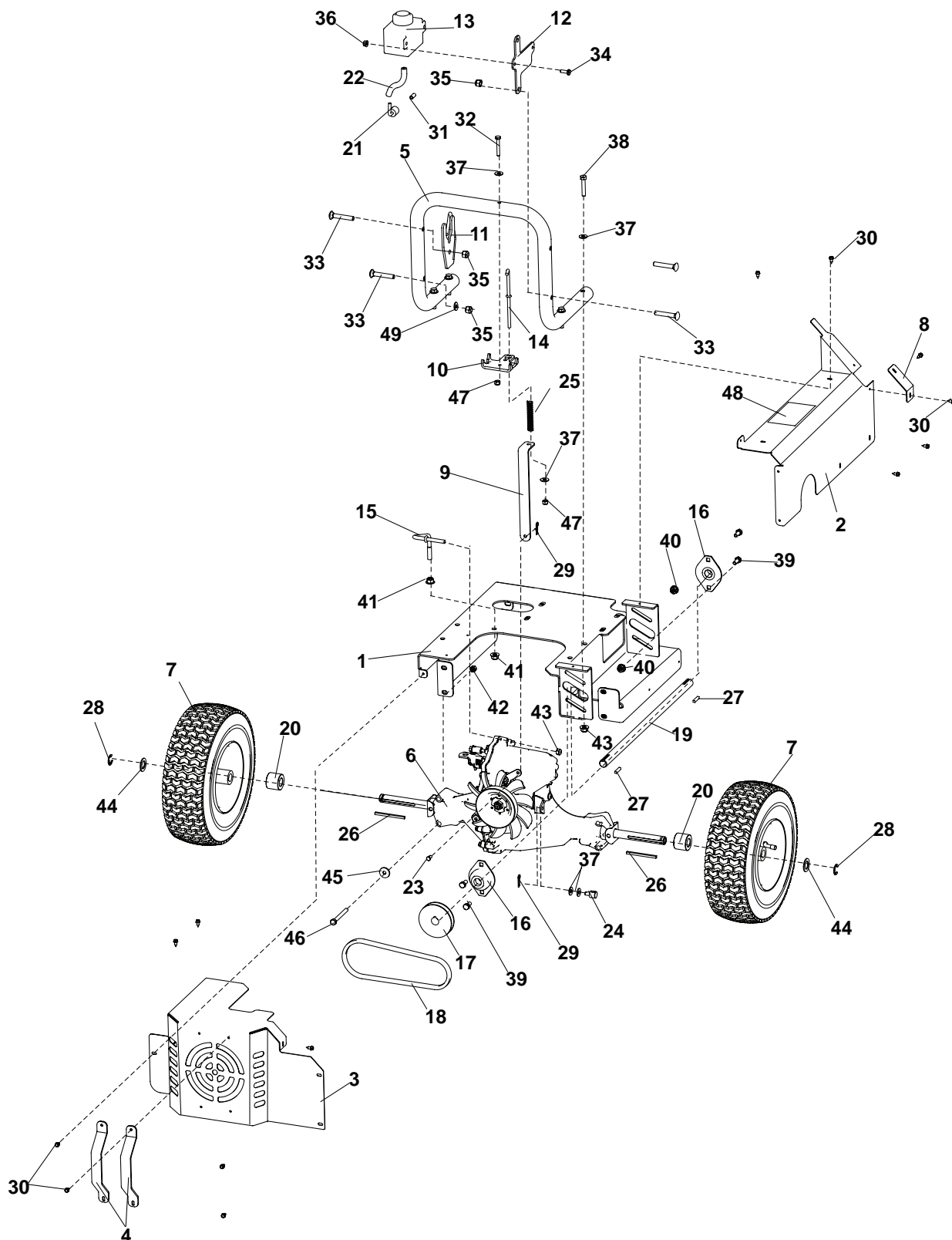
FIGURE 2

ITM	PART NO.	DESCRIPTION	QTY	ITM	PART NO.	DESCRIPTION	QTY
1	4166074	ENGINE-HONDA GX270	1				
2	4171119	S-HOUSING PROVAC	1				
3	600114	IMPELLER-BALANCED	1				
4	600198	FRONT PLATE	1				
5	600175	LINER	1				
6	4168849.17	WLDMT DECK - PRO VAC SP	1				
7	4168845.10	WLDMT SPACER HONDA	1				
8	4168843	SHEAVE ENGINE	1				
9	4168957	PULLEY AK 28 - PROVAC SP	1				
10	4168956	BELT 4L260 - PROVAC SP	2				
11	4168840	SPACER HONDA .85 SP	1				
12	64164-13	KEY 1/4 X 2 SQ	1				
13	64164-02	KEY 3/16 X 1 SQ	1				
14	64123-307	BLT-HEX 7/16-20 X 2-3/4 GR 8	1				
15	4168981	SPACER HONDA FAN	1				
16	910517	BOLT-WLF 5/16-24 X 1-3/8	4				
17	64262-009	BOLT-WLF 5/16-24 X 1-3/8	4				
18	64268-02	NUT-FL NYLON LOCK 5/16-18	4				
19	720592	5/16-18" x 1" GR 5 HEX BOLT	10				
20	64163-29	WSHR-21/64 X 1 X 11GA	14				
21	64229-02	NUT-NYLON LOCK 5/16-18	14				
22	64141-6	NUT-WLF 5/16-18	4				
23	910156	PLATE, MUFFLER HONDA	1				
24	64152-56	SCREW-HS STAP #12X1/2	2				
25	910158	STANDOFF 5/8	2				
26	910159	STANDOFF 5/16	4				
27	910531	NUT-WIZ FL 10-24	3				
28	910532	SCREW-SELF TAP M5 X 16	1				
29	910533	SCREW-SELF TAP M5 X 25	2				
30	4171043.7	GUARD-MUFFLER	1				

# MAIN FRAME ASSEMBLY

PRO VAC SP

FIGURE 3



# PRO VAC SP

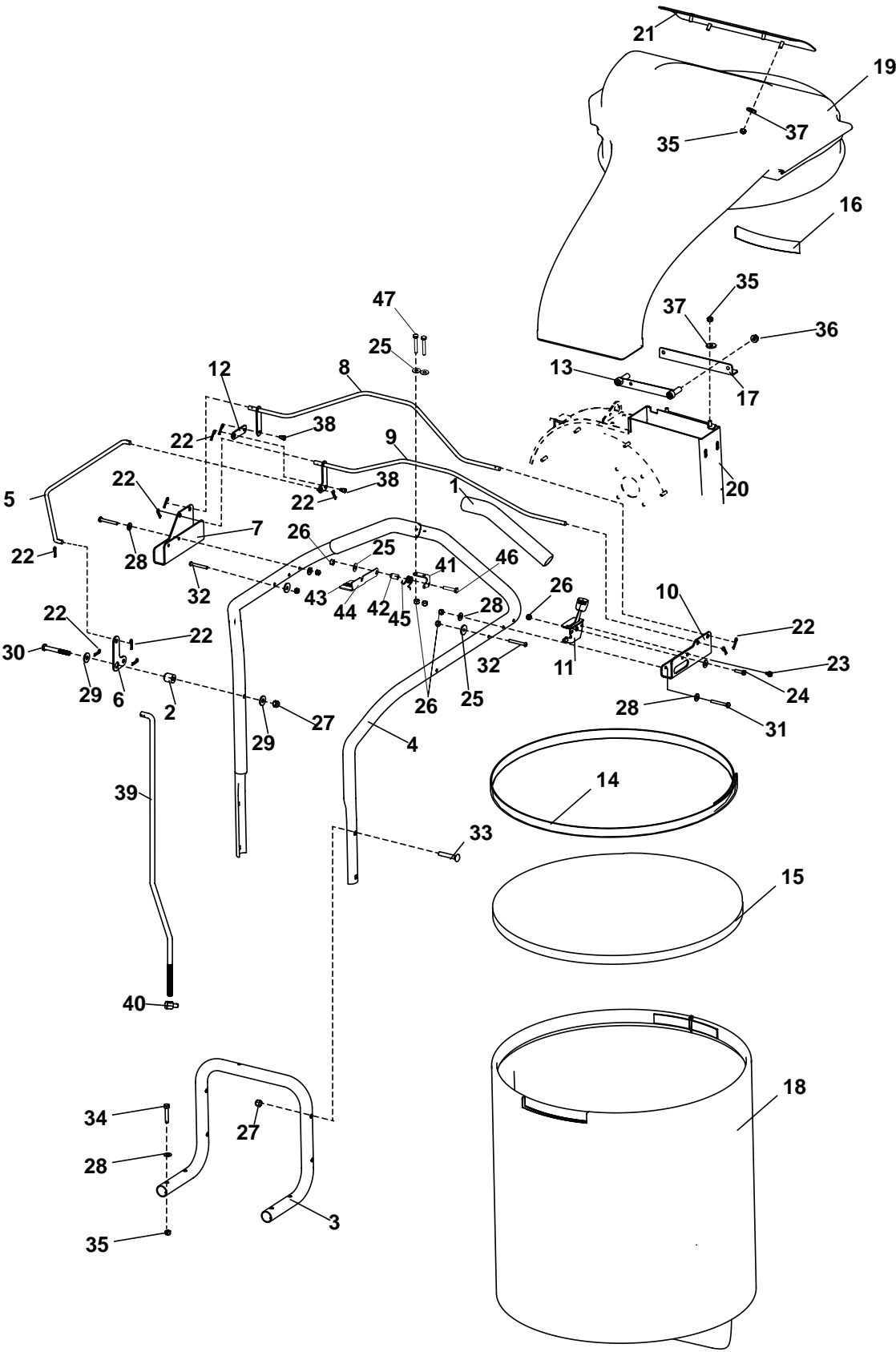
# MAIN FRAME ASSEMBLY

FIGURE 3

ITM	PART NO.	DESCRIPTION	QTY	ITM	PART NO.	DESCRIPTION	QTY
1	4168849.17	WLDMT DECK	1	31	4169743	HOSE ADPTR, SAE7/16-20	1
2	4171120	S-SIDE GUARD	1	32	64123-283	BLT-HEX 1/4-20X1-3/4	1
3	4168851.17	REAR GAURD	1	33	600504	BOLT, CRG, 3/8-16x2-1/4,	3
4	4169476.17	DECK AIR SPACER	2	34	64123-89	BLT-HEX 1/4-20X3/4	2
5	4168832.10	HANDLE LOWER	1	35	64229-03	NUT-NYLON LOCK 3/8-16	3
6	4168866	TRANSAXLE HYDRO T2	1	36	64141-2	NUT-WLF 1/4-20	2
7	4168949	WHEEL 13X5-6 KEYED	2	37	64163-55	WSHR .328X.75X14 GA	8
8	4169691.17	BELT GUARD	1	38	64123-61	BLT-HEX 5/16-18X1-3/4	4
9	4168847.7	FREEWHEEL LINK	1	39	64123-54	BLT-HEX 5/16-18 X .75	4
10	4168846.7	BRACKET FREEWHEEL	1	40	64141-6	NUT-WLF 5/16-18	4
11	4166365.17	WLDMT-ROPE GUIDE	1	41	64141-4	NUT-WLF 3/8-16	2
12	4168968.7	BRACKET TRANS TANK	1	42	64268-02	NUT-FL NYN LOCK 5/16-18	8
13	4168962	TANK TRANSMISSION	1	43	64229-02	NUT-NYLON LOCK 5/16-18	5
14	4148697	ROD-PULL FREEWHEEL	1	44	64163-06	WSHR .768/.756X1.25X14G	2
15	4170481	TRANS MOUNT LINK	1	45	64163-29	WSHR-21/64 X 1 X 11GA	4
16	4168958	BEARING FLANGE .75	2	46	64123-55	BLT-HEX 5/16-18 X 3	4
17	4168961	PULLEY AK32	1	47	64229-01	NUT-NYLON LOCK 1/4-20	2
18	4168956	BELT 4L260	2	48	4168759	LABEL-WARNING HAND	1
19	4168844	SHAFT TRANSMISSION	1	49	64163-31	WSHR 25/64X1X12	1
20	C300150	SPACER-1.5X .765X 1.223	2	50*	720298	CLAMP-HOSE, GAS TANK	1
21	4169744	FITTING - JIC 90 1/4 BARB	1				
22	22173	HOSE - TRANSMISSION	1				
23	64188-85	PIN-CLEVIS, 1/4 X 1/2	1				
24	33103	SWIVEL	1				
25	2720544	SPRING-COMPRESSION	1				
26	64164-41	KEY-3/16 X 3 SQ	2				
27	64164-02	KEY 3/16 X 1 SQ	2				
28	64221-08	E-RING .750	2				
29	64168-2	COTTER-HAIRPIN .08X1.19	2				
30	64152-56	SCREW-STAP #12X1/2	16				

\*NOT ILLUSTRATED

FIGURE 4



# PRO VAC SP

## HANDLE ASSEMBLY

FIGURE 4

ITM	PART NO.	DESCRIPTION	QTY	ITM	PART NO.	DESCRIPTION	QTY
1	600153	GRIP-HANDLE, LAWN VAC	2				
2	4168839	STANDOFF TRACTION	1				
3	4168832.10	HANDLE LOWER	1				
4	4171130	HANDLE UPPER	1				
5	4168837.7	TRACTION ROD UPPER	1				
6	4168848.7	BELLCRANK	1				
7	4168834.7	BRACKET BAIL RT	1				
8	4169477.7	WLDMT-BAIL FORWARD	1				
9	4169480.7	WLDMT-BAIL REVERSE	1				
10	4168835.7	BRACKET BAIL LT	1				
11	4166170-04	CABLE-THROTTLE	1				
12	4169482.7	BAIL LINK	1				
13	600142.7	FLANGE CLAMP PLATE	1				
14	600176	CLAMP-BAND,DEBRIS BAG	1				
15	600196	BAG SEAL STRAP	1				
16	600161	HOOK STRIP	1				
17	4168955.17	FLANGE COLLECTOR	1				
18	600177	DEBRIS BAG	1				
19	4168954	DISCHARGE CHUTE	1				
20	4168874.10	WLDMT - HOUSING	1				
21	4171121	S-PLATE WARN PROVAC	1				
*	4171006	LABEL-CHUTE WARN & OP	1				
22	64168-2	COTTER-HAIRPIN .08X1.19	12				
23	64152-23	SCREW-SP 1/4-20X3/8	1				
24	64123-114	BLT-HEX 1/4-20 X 1	1				
25	64163-34	WSHR.256/.267X1X11GA	2				
26	64229-01	NUT-NYLON LOCK 1/4-20	11				
27	64229-03	NUT-NYLON LOCK 3/8-16	5				
28	64163-55	WSHR .328X.75X14 GA	17				
29	64163-31	WSHR 25/64X1X12	3				
30	64123-75	BLT-HEX 3/8-16 X 3	1				
31	64123-60	BLT-HEX 1/4-20X2	4				
32	600509	BOLT, BTN SHCS, 1/4-20 x 2" 4					
33	600504	BOLT, CRG, 3/8-16 x 2-1/4	4				
34	64123-61	BLT-HEX 5/16-18X1-3/4	4				
35	64229-02	NUT-NYLON LOCK 5/16-18	10				
36	64141-6	NUT-WLF 5/16-18	2				
37	64163-29	WSHR-21/64 X 1 X 11GA	6				
38	64188-85	PIN-CLEVIS, 1/4 X 1/2	2				
39	4168836	TRACTION ROD LOWER	1				
40	33103	SWIVEL	1				
41	4171040.17	BRACKET CE LOCKOUT	1				
42	4171042	SPACER CE LOCKOUT	1				
43	910649	LABEL-LOCKOUT	1				
44	4171122	S-LEVER CE LOCKOUT	1				
45	4165150	SPRING-TORSION,	1				
46	64123-80	BLT-HEX 1/4-20X1-1/4	1				
47	64123-283	BLT-HEX 1/4-20X1-3/4	2				



## **2 YEAR LIMITED SERVICE AND WARRANTY POLICY FOR LITTLE WONDER PRO VAC AND PRO VAC SP**

---

All Little Wonder Pro Vacuums are warranted against defects in material and workmanship for a period of two (2) years from the date of purchase, under the following terms and conditions.

LITTLE WONDER will repair or replace, at its option, any part or parts of the product found to be defective in material or workmanship during the warranty period. Warranty repairs and replacements will be made without charge for parts or labor. All parts replaced under warranty will be considered as part of the original product, and any warranty on the replaced parts will expire coincident with the original product warranty. If you think your LITTLE WONDER Pro Vacuum is defective in material or workmanship, you must return it to a registered dealer with a valid sales receipt or to our factory at 1028 Street Rd., Southampton, PA 18966. Transportation charges to ship your product to us or a registered dealer must be borne by you.

Engines for all gasoline powered products are warranted separately by the engine manufacturer. Therefore, there are no warranties made, expressed or implied, for engines for gasoline powered products by LITTLE WONDER.

LITTLE WONDER assumes no responsibility in the event that the product was not assembled or used in compliance with any assembly, care, safety or operating instructions contained in the Operator's Manual or information accompanying the product. This limited warranty does not cover damages or defects due to normal wear and tear, lack of reasonable and proper maintenance, failure to follow operating instructions or Operator's Manual, misuse, lack of proper storage or accidents, nor does it cover routine maintenance parts and service. This limited warranty does not cover any defects due to repairs or alterations made to the product made by anyone other than LITTLE WONDER or its registered dealers.

You must maintain your LITTLE WONDER Pro Vac by following the maintenance procedures described in the operator's manual. Such routine maintenance, whether performed by you or a registered dealer, is at your expense.

LITTLE WONDER MAKES NO EXPRESS OR IMPLIED WARRANTIES REPRESENTATIONS OR PROMISES EXCEPT THOSE CONTAINED HEREIN. THERE ARE NO OTHER WARRANTIES, INCLUDING WARRANTIES OF MERCHANTABILITY AND FITNESS FOR A PARTICULAR PURPOSE. ALL WARRANTIES OTHER THAN THE EXPRESS WARRANTY SET FORTH ABOVE ARE SPECIFICALLY DISCLAIMED. THE DURATION OF ANY IMPLIED WARRANTY, INCLUDING MERCHANTABILITY AND FITNESS FOR A PARTICULAR PURPOSE, IS LIMITED TO THE DURATION OF THIS WRITTEN LIMITED WARRANTY. LITTLE WONDER DISCLAIMS ALL LIABILITY FOR INDIRECT, INCIDENTAL AND/OR CONSEQUENTIAL DAMAGES IN CONNECTION WITH THE USE OF THE LITTLE WONDER PRO VACUUM PRODUCTS COVERED BY THIS WARRANTY. SOME STATES DO NOT ALLOW LIMITATIONS ON HOW LONG AN IMPLIED WARRANTY LASTS AND/OR DO NOT ALLOW THE EXCLUSION OR LIMITATION OF INCIDENTAL OR CONSEQUENTIAL DAMAGES, SO THAT ABOVE LIMITATIONS AND EXCLUSIONS MAY NOT APPLY TO YOU. THIS WARRANTY GIVES YOU SPECIFIC LEGAL RIGHTS, AND YOU MAY ALSO HAVE OTHER RIGHTS WHICH VARY FROM STATE TO STATE.

**LITTLE WONDER**  
**SCHILLER GROUNDS CARE, INC.**  
**1028 STREET ROAD, P.O. BOX 38**  
**SOUTHAMPTON, PA 18966**  
**PHONE: 877-596-6337 • FAX: 215-357-8045**  
**877 - LWONDER**  
**[www.littlewonder.com](http://www.littlewonder.com)**