



912480

BC QUICKCAT FX651V KAW 48" SD

912520

BC QUICKCAT FX691V KAW 52" SD

PARTS MANUAL

MAN 4171262
Rev. A 11-2014

OPERATOR'S MANUAL 4171263



www.bobcatturf.com

CALIFORNIA

Proposition 65 Warning

Diesel engine exhaust and some of its constituents are known to the State of California to cause cancer, birth defects and other reproductive harm.

⚠ WARNING

The engine exhaust from this product contains chemicals known to the State of California to cause cancer, birth defects or other reproductive harm.

Californie Proposition 65 Avertissement

Les échappements des moteurs diesel et certains de leurs composés sont reconnus par l'Etat de Californie pour être cancérigènes, provoquer des défauts congénitaux et d'autres dangers en matière de reproduction.

⚠ AVERTISSEMENT

L'émission du moteur de ce matériel contient des produits chimiques que l'Etat de Californie considère être cancérigènes, provoquer des défauts congénitaux et d'autres dangers en matière de reproduction.

California Advertencia de la Proposición 65

El estado de California hace saber que los gases de escape de los motores diesel y algunos de sus componentes producen cáncer, defectos de nacimiento y otros daños en el proceso de reproducción humana.

⚠ ADVERTENCIA

El estado de California hace saber que los gases de escape de este producto contienen productos químicos que producen cáncer, defectos de nacimiento y otros daños en el proceso de reproducción humana.

CALIFORNIA

Proposition 65 Warning

Battery posts, terminals, wiring insulation, and related accessories contain lead and lead compounds, chemicals known to the State of California to cause cancer and birth defects or other reproductive harm.
WASH HANDS AFTER HANDLING.



IMPORTANT MESSAGE

Thank you for purchasing this Schiller Grounds Care, Inc. product. You have purchased a world class mowing product, one of the best designed and built anywhere.

This machine comes with an Operation and Safety Manual and a separate Setup, Parts and Maintenance Manual. The useful life and good service you receive from this machine depends to a large extent on how well you read and understand these manuals. Treat your machine properly, lubricate and adjust it as instructed, and it will give you many years of reliable service.

Your safe use of this Schiller Grounds Care, Inc. product is one of our prime design objectives. Many safety features are built in, but we also rely on your good sense and care to achieve accident-free operation. For best protection, study the manuals thoroughly. Learn the proper operation of all controls. Observe all safety precautions. Follow all instructions and warnings completely. Do not remove or defeat any safety features. Make sure those who operate this machine are as well informed and careful in its use as you are.

See a Schiller Grounds Care, Inc. dealer for any service or parts needed. Schiller Grounds Care, Inc. service ensures that you continue to receive the best results possible from Schiller Grounds Care, Inc. products. You can trust Schiller Grounds Care, Inc. replacement parts because they are manufactured with the same high precision and quality as the original parts.

Schiller Grounds Care, Inc. designs and builds its equipment to serve many years in a safe and productive manner. For longest life, use this machine only as directed in the manuals, keep it in good repair and follow safety warnings and instructions. You'll always be glad you did.

Schiller Grounds Care, Inc.
One Bob Cat Lane
Johnson Creek, WI 53038-0469

TABLE OF CONTENTS	FIGURES.....	PAGE
SAFETY.....		2
ASSEMBLY AND SETUP		3-4
MAINTENANCE CHART		5
MAINTENANCE RECORD.....		6
MAINTENANCE		7-13
ADJUSTMENTS.....		14-17
BELT REPLACEMENT		18
SPECIFICATIONS.....		19-20
PARTS SECTION.....		21
ENGINE DECK ASSEMBLY	FIGURE 1.....	22, 23
RIDER PLATFORM ASSEMBLY	FIGURE 2.....	24, 25
WHEEL & TRANSAXLE ASSEMBLY	FIGURE 3.....	26, 27
FUEL TANK & BATTERY ASSEMBLY.....	FIGURE 4.....	28, 29
PARKING BRAKE ASSEMBLY.....	FIGURE 5.....	30, 31
UPPER WIRE HARNESS	FIGURE 6.....	32, 33
LOWER WIRE HARNESS.....	FIGURE 7.....	34, 35
TOWER ASSEMBLY	FIGURE 8.....	36, 37
CONTROLS ASSEMBLY.....	FIGURE 9.....	38, 39
DECK LIFT ASSEMBLY	FIGURE 10.....	40, 41
CASTER & BELT COVER ASSEMBLY	FIGURE 11.....	42, 43
48" SIDE DECK ASSEMBLY	FIGURE 12.....	44, 45
52" SIDE DECK ASSEMBLY	FIGURE 13.....	46, 47
CHUTE, BAFFLES, & EDGES ASSEMBLY	FIGURE 14.....	48, 49

NOTICE !!!

Unauthorized modifications may present **extreme** safety hazards to operators and bystanders and could also result in product damage.

Schiller Grounds Care, Inc. strongly warns against, rejects and disclaims any modifications, add-on accessories or product alterations that are not designed, developed, tested and approved by Schiller Grounds Care, Inc. Engineering Department. Any Schiller Grounds Care, Inc. product that is altered, modified or changed in any manner not specifically authorized after original manufacture-including the addition of "after-market" accessories or component parts not specifically approved by Schiller Grounds Care, Inc.-will result in the Schiller Grounds Care, Inc. Warranty being voided.

Any and all liability for personal injury and/or property damage caused by any unauthorized modifications, add-on accessories or products not approved by Schiller Grounds Care, Inc. will be considered the responsibility of the individual(s) or company designing and/or making such changes. Schiller Grounds Care, Inc. will vigorously pursue full indemnification and costs from any party responsible for such unauthorized post-manufacture modifications and/or accessories should personal injury and/or property damage result.



This Operator's Manual should be regarded as part of the machine. Suppliers of both new and second-hand machines must make sure that this manual is provided with the machine.



¡LEA EL INSTRUCTIVO!

Si no lee Ingles, pida ayuda a alguien que si lo lea para que le traduzca las medidas de seguridad.

Schiller Grounds Care, Inc.

One Bobcat Lane
Johnson Creek, WI 53038 U.S.A
Phone: 920-699-2000
Fax: 920-699-3683

MODEL NUMBER

SERIAL NUMBER



This symbol means:
ATTENTION!
BECOME ALERT!

Your safety and the safety of others is involved.

Signal word definitions:

The signal words below are used to identify levels of hazard seriousness. These words appear in this manual and on the safety labels attached to Schiller Grounds Care, Inc. machines. For your safety and the safety of others, read and follow the information given with these signal words and/or the symbol shown above.

DANGER

DANGER indicates an imminently hazardous situation which, if not avoided, **WILL** result in death or serious injury.

WARNING

WARNING indicates a potentially hazardous situation which, if not avoided, **COULD** result in death or serious injury.

CAUTION

CAUTION indicates a potentially hazardous situation which, if not avoided, **MAY** result in minor or moderate injury. It may also be used to alert against unsafe practices or property damage.

CAUTION

CAUTION used without the safety alert symbol indicates a potentially hazardous situation which, if not avoided, **MAY** result in property damage

MODEL NUMBER: This number appears on sales literature, technical manuals and price lists.

SERIAL NUMBER: This number appears only on your mower. It contains the model number followed consecutively by the serial number. Use this number when ordering parts or seeking warranty information. Located behind rider pad on frame of unit.

QUICKCAT

TOOLS REQUIRED FOR ASSEMBLY

- Wrecking bar
- Claw hammer
- Ratchets: 3/8", e
- Sockets: 9/16", 3/4"
- Wrenches: 3/8", 9/16", 3/4"
- Straight edge
- Tire pressure gauge
- Blocks (for deck leveling)

NOTE: All references below to the "right" or "left" are with respect to an operator at the controls.

1. UNCRATE UNIT

Discard packing materials. Remove and discard shipping brackets. Tighten caster wheel axle bolts against caster axle spanner bushings.

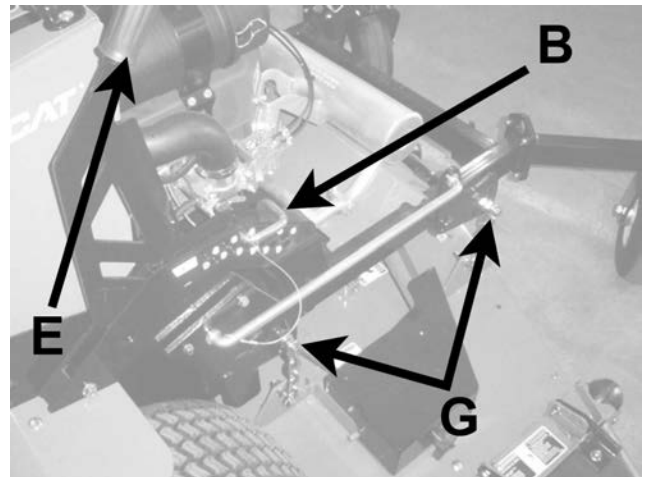
2. Set rear tire pressures to 12 lbs/in² (0.8 kg/cm²). Tires are overinflated for shipping. Front tires should be 15 lbs/in² (1.05kg/cm²).

DECK LEVELING

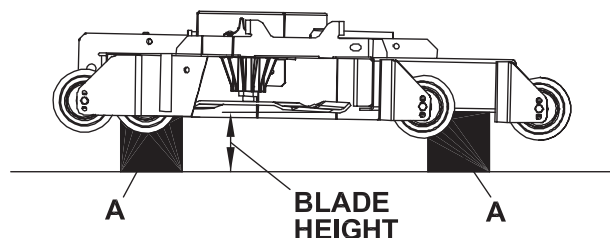
1. Park the machine on a smooth, level surface. Raise the deck to the transport position.
2. Lower the deck onto a set of equal height blocks **A** under the rear corners of the deck. Place another set of blocks under the front of the deck so that the deck top is pitched forward 1/8".

NOTE: The front and rear of the deck are at different heights.

3. Measure the height of the blade cutting edge above the ground. Remove pin **B** and set the height of cut lever **E** to that height.
4. Loosen nuts on bolts **G**. Move bolts in slot to remove slack in chain. Tighten nuts on bolts **G**.



A 1/8" forward pitched deck provides the best horsepower.
 A level deck provides the best quality of cut.
 A 1/8" rearward pitched deck provides the best striping.
 Certain grass types and conditions may vary.



5. FINAL PREPARATIONS

- Check the engine and hydraulic oil levels. Top up with the correct oil if necessary. Use SAE 10W30 motor oil for the engine. Use fresh, clean SAE 20W50 motor oil for the hydraulic system. After running for one hour, let hydraulic system oil cool. When cold, check levels.



WARNING Battery acid is caustic and fumes are explosive and can cause serious injury or death.

Use insulated tools, wear protective glasses or goggles and protective clothing when working with batteries. Read and obey the battery manufacturer's instructions.

Be certain the ignition switch is OFF and the key has been removed before servicing the battery.

- a) Verify battery polarity before connecting or disconnecting the battery cables.
 - b) When installing the battery, always assemble the RED, positive (+) battery cable first and the ground, BLACK, negative (-) cable last.
 - c) Tighten cables securely to battery terminals and apply a light coat of silicone dielectric grease to terminals and cable ends to prevent corrosion. Keep terminal covers in place.
- Read Operation and Safety Manual before starting.
 - Deck can be adjusted to allow for the best horsepower, best quality of cut, or best striping. See deck leveling procedure in the Adjustments Section in this manual to set as desired.
 - Run engine at full RPM for 5 minutes before engaging blades to allow the engine to be fully lubricated before load is applied.
 - Check the hydrostat neutral adjustment. Neutral is set at the factory but may require readjustment if air trapped during the initial oil fill has worked out of the system. See Adjustments Section later in this manual.
 - Do not use the machine without an approved grass collector, the grass discharge chute or mulching plates correctly fitted.

MAINTENANCE OPERATION	Maintenance is an ongoing job. These intervals are maximum times between maintenance operations. Perform more often under severe conditions.						
	FIRST 5 HOURS	BEFORE EACH USE	EVERY 25 HOURS	EVERY 50 HOURS	EVERY 100 HOURS	EVERY 200 HOURS	YEARLY
ENGINE							
Consult the engine manual for additional information and instructions							
Check/Top Up Oil Level		X					
Check For Leaks		X					
Clean Air Intake Screen		X					
Clean Air Cleaner Precleaner			X				
Clean Air Cleaner Element			X				
Clean Cooling Fins					X		
Change Oil And Filter	X	See engine manufacturer's manual					
Check/Replace Spark Plugs						X	
TRANSAXLE							
Check Oil Level	X	X					
Check For Leaks	X	X					
Change Oil And Filter						X	
MACHINE							
Check Interlock Operation		X					
Check Tire Pressures		X					
Check/Top Up Battery							X
Lubricate All Points		X					

[illegible]6



QUICKCAT

CHECK DAILY

Operator Presence Interlock System - Start Operation

For the engine to crank, the parking brake must be ON, the PTO (blades) OFF. Stand on the operator platform and check, one by one, if the engine will crank with the parking brake OFF or the PTO (Blades) ON.

Operator Presence Interlock System - Run Operation

In order for the engine to run, the operator must either be standing on the platform, or walking behind the unit with the platform up, the parking brake in the OFF position and the LH control handle held down out of the neutral position.

The engine may also run if the parking brake is in the ON position, the LH control handle is in the NEUTRAL position rotated up, and the PTO (blades) are OFF.

To check:

1. Start the engine and run at 1/2 throttle.
2. With the LH control handle in the NEUTRAL position rotated up, move the parking brake lever to OFF and turn the PTO (Blades) ON. Each check should kill the engine after 1/2 second delay. (A 1/2 second delay is built into the system to prevent engine cut-out when traversing rough terrain.)

Repair machine before using if the Operator Presence Interlock System does not operate correctly in start or run. Contact your authorized BOB-CAT dealer.

Hardware

Tighten any nuts and bolts found loose. Replace any broken or missing cotter pins. Repair any other problems before operating.

Tire pressure

Rear Tires should be kept inflated at 12 lbs/in² (.84kg/cm²). Improper tire inflation can cause rapid tire wear and poor traction. Uneven inflation can cause uneven cutting. Front tires should be 15p.s.i. (1.05 kg/cm²)

BATTERY-AGM TYPE BATTERY SUPPLIED

⚠ WARNING Battery acid is caustic and fumes are explosive and can cause serious injury or death. Use insulated tools, wear protective glasses or goggles and protective clothing when working with batteries. Read and obey the battery manufacturer's instructions.

Be certain the ignition switch is OFF and the key has been removed before servicing the battery.

1. Verify battery polarity before connecting or disconnecting the battery cables.
2. When installing the battery, always assemble the RED, positive (+) battery cable first and the ground, BLACK, negative (-) cable last.
3. When removing the battery, always remove the ground, negative (-) cable first and the red, positive (+) cable last.

4. AGM type battery. **Use AGM charger when charging. P/N 4171973**

5. Clean the cable ends and battery posts with steel wool. Use a solution of baking soda and water to clean the battery. Do not allow the solution to enter into the battery cells.

6. Tighten cables securely to battery terminals and apply a light coat of silicone dielectric grease to terminals and cable ends to prevent corrosion. Keep terminal covers in place.

LUBRICATION

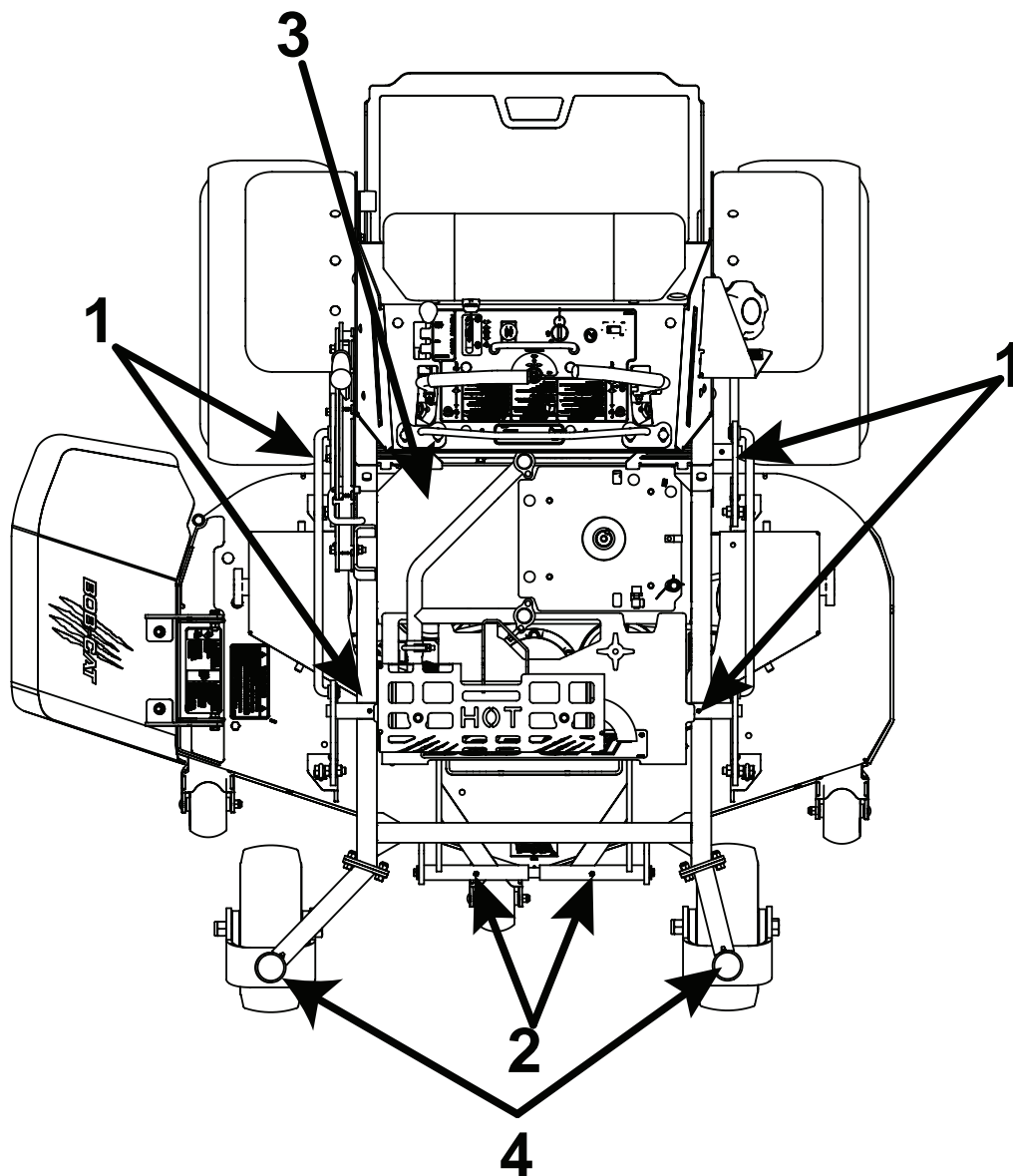
Every 50 hours of operation, lubricate the following points (1-3) with grease:

1. Deck lift pivots (4 points)
2. Pull arm pivots (4 points)
3. Deck idler pivot (1 point)

Every 500 hours or once a year:

4. Caster wheel pivots (2 points)

NOTE ON BLADE SPINDLES - The blade spindles on these machines use a superior sealed bearing that does not require re-lubrication.



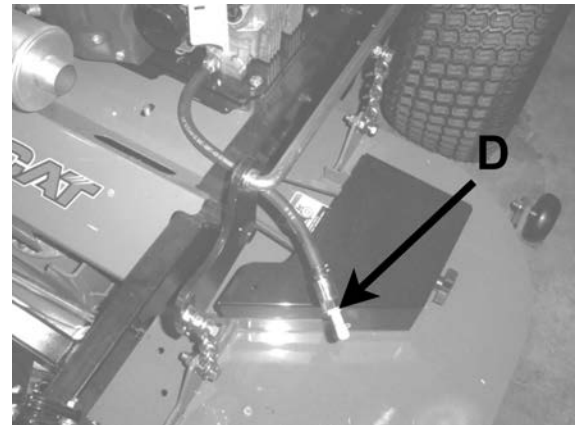
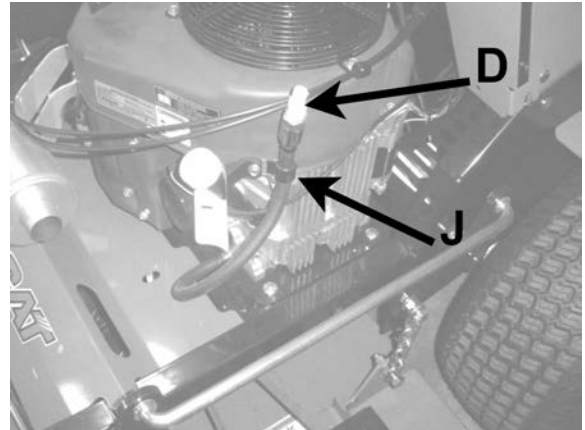
QUICKCAT**ENGINE OIL**

Do not perform engine maintenance without the engine off, spark plug wires disconnected and PTO disengaged.

AFTER FIRST FIVE (5) HOURS

While the engine is warm:

1. Release the oil drain hose assembly from the engine clip **J**. Lay hose assembly over the frame edge.
2. Remove the rubber cap **D** from the tip of the hose assembly and turn the drain valve to allow oil to drain from the engine. Dispose of used oil in accordance with local requirements.
3. Clean drain valve and tighten the plastic portion of the drain valve back into the metal portion of the valve. Replace rubber cap over the tip of the valve. Replace hose assembly back into engine clip.
4. Change oil filter.
5. Fill the crankcase with fresh oil to the full mark. Do not overfill. See engine manual for oil specifications.

**PERIODIC OIL CHANGES**

1. See engine manual for oil and filter change intervals after the break-in period.
2. Follow instructions for first oil change, above.

DAILY

1. Check oil level with the dipstick.
2. If oil is needed, add fresh oil of proper viscosity and grade. See engine manual for oil specifications. Do not overfill.
3. Replace dipstick before starting engine.

SPARK PLUGS

Remove each plug and check condition.

- Good operating conditions are indicated if the plug has a light coating of grey or tan deposit.
- A white blistered coating indicates overheating. A black coating indicates an “over rich” fuel mixture. Both may be caused by a clogged air cleaner or improper carburetor adjustment.
- Do not sandblast, wire brush or otherwise attempt to repair a plug in poor condition. Best results are obtained with a new plug.
- Set plug gap as specified in engine manual.

FUEL FILTER

An in line fuel filter is located in the fuel supply line. Inspect at every oil change to make sure it is clean and unobstructed. Replace if dirty.

TRANSAXLES

⚠ WARNING

Inattention to proper safety, operation, or maintenance procedures could result in personal injury, or damage to the equipment. Schiller Grounds Care, Inc. recommends returning the machine to your authorized Schiller Grounds Care, Inc. dealer for service or repair.

Perform transaxle maintenance with the engine off, spark plug wires disconnected and PTO disengaged.

TRANSAXLE FLUID CHANGE

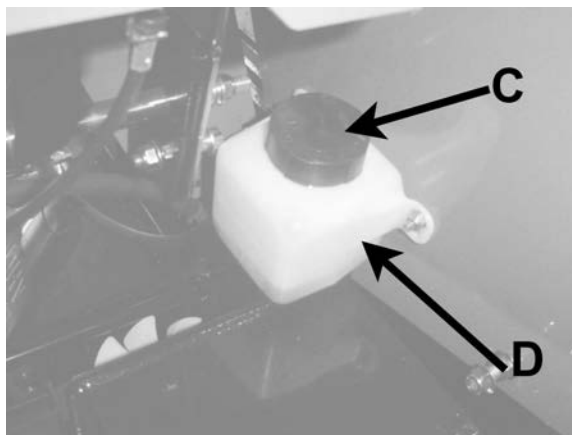
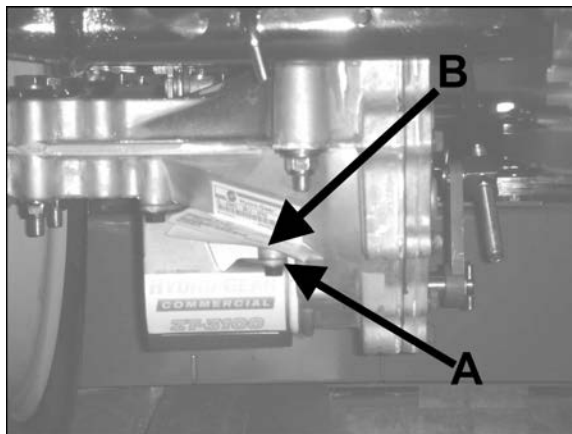
Change the transaxle fluid every 200 hours of operation. It is essential that the exterior of the transaxle be free of debris, prior to fluid maintenance.

1. Remove the three 1/4" filter guard screws and filter guard **A**. Remove the oil filter **B** from the transaxle and discard. Dispose of used oil in accordance with local requirements.
2. Wipe the filter base surface off and apply a film of new oil to the gasket of the new replacement filter. Install the new filter by hand, turn 3/4 to one full turn after the filter gasket contacts the filter base surface.
3. Re-install the filter guard and torque the three screws to 65 in. lbs. each.
4. Remove cap **C**, fill the transaxles through the expansion tank **D** with approximately 2 quarts of SAE 20W-50 engine oil PER TRANSAXLE.

CAUTION

Do not overfill! If you overfill the transaxle while the unit is "cold", it may overflow as it reaches normal operating temperatures. The oil level should not be above the manufacturer's suggestions. The oil level should be filled to the full cold line on the overflow tank. This will allow the space needed for the oil to expand as it warms up.

5. After starting engine, check the fluid level and continue to add oil to overflow tank **D** to fill line on tank.
6. Purge the transaxles, following the purging procedures.



QUICKCAT

PURGING TRANSAXLES

Due to the effects air has on efficiency in hydrostatic drive applications, it is critical that it be purged from the system.

These purge procedures should be implemented any time a hydrostatic system has been opened to facilitate maintenance or any additional fluid has been added to the system.

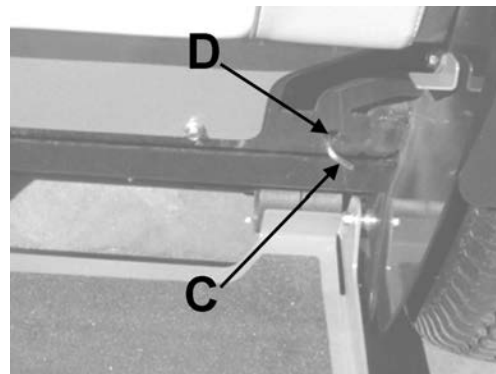
Purging may be required if the unit shows any of the following symptoms:

- Noisy operation.
- Lack of power or drive after short term use.
- High operation temperature, excessive oil expansion.

1. Check the transaxle fluid, fill to proper level, if required. Should be to the Full Cold Line.
2. Raise the drive wheels off the ground. Support unit with jack stands or other suitable means.
3. Open bypass valves. To open the bypass valves, move the parking brake to any **OFF** position, then lift and pull bypass control rod **C** through the large opening **D**, until the control rod stop is past the opening. Drop rod **C** into the small opening to lock in place. Repeat for the other bypass

control rod. Start engine, slowly move the control levers in both forward and reverse directions 5 to 6 times. As air is purged from the unit, the oil level will drop.

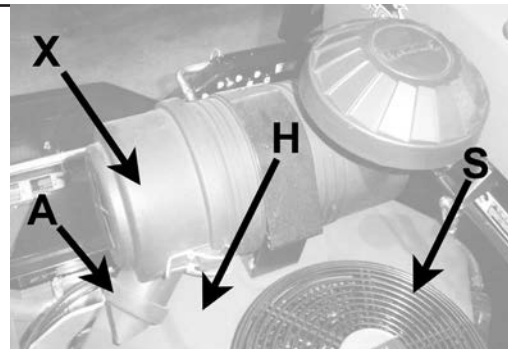
4. With the bypass valve closed, and the engine running, slowly move the control levers in both forward and reverse directions 5 to 6 times.
5. Stop engine. Check the transaxle fluid level, add fluid as required.
6. It may be necessary to repeat steps 3-5 until all the air is completely purged from the system. When the transaxle moves forward and reverse at normal speed, purging is complete.



ENGINE COOLING

Continued operation with a clogged cooling system will cause severe overheating and can result in engine damage.

- **Daily:** Clean air intake screen **S** on air cooled engines.
- **Every 100 hours:** Clean cooling fins beneath blower housing **H** with reference to information in the engine manufacturer's manual.

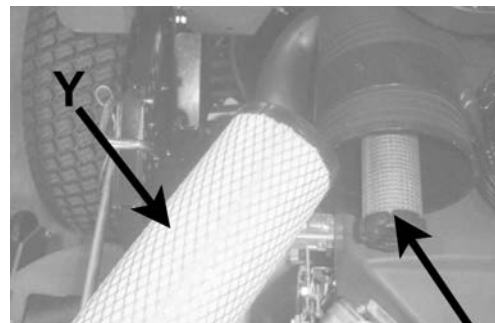


HEAVY DUTY CYCLONIC AIR CLEANER

Clean and replace the air cleaner element as specified in the service chart. Uneven running, lack of power or black exhaust fumes may indicate a dirty air cleaner.

To replace air cleaner elements:

1. Unclamp end cover **X** and remove existing cleaner elements.
2. Insert new elements **Y** and **Z** and replace cover. Ensure the breathing port **A** is pointing down and towards the front of the tractor.



SPECIFIC TORQUES

BLADE BOLTS	70 FT-LBS (95 Nm)
WHEEL LUG NUTS	75-100 FT-LBS (102-135.5 Nm)
CLUTCH MOUNTING BOLT	50 FT-LBS (68 Nm)
TRANSAXLE PULLEY BOLT	28.3-41.5 FT-LBS (38-56 Nm)
TRANSAXLE DRAIN PLUG	15-20 FT-LBS (20-27 Nm)
TRANSAXLE FILTER	100-150 IN-LBS (14.6-16.9 Nm)

CLEANING MACHINE

Clean the machine after use. Compressed air is recommended. Do not use a pressure washer. The machine will run cooler and last longer if kept free of clippings and other debris. A clean machine also reduces the risk of fire due to accumulation of combustible debris and chaff.

Brush or blow clippings and debris off the cutterdeck and engine deck. Clippings and debris should be kept from accumulating around the exhaust system and under the exhaust guards. This can be done by using compressed air. DO NOT use a pressure washer.

WASHING MACHINE

CAUTION: Improperly washing a machine can cause water to enter bearings and other components. This can greatly reduce component life.

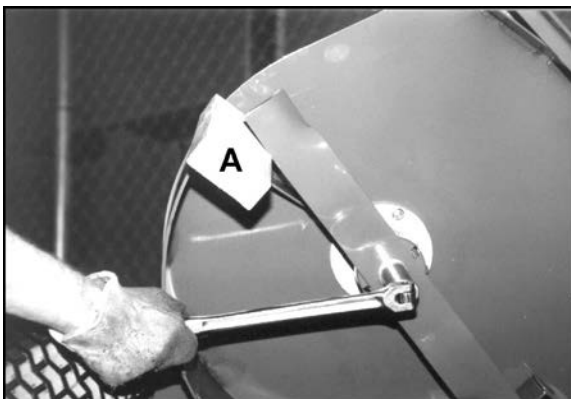
- Do not use a pressure washer. Do not direct water at bearings or seals. High pressure water can blow past seals and enter sealed bearings.
- Allow the machine to cool down before washing. Water on a warm machine can be sucked into sealed bearings as they cool.
- Avoid getting electrical connections wet. Water can cause electrical faults and corrosion of electrical components.

QUICKCAT

BLADE REMOVAL

Follow these instructions to prevent injury during blade removal:

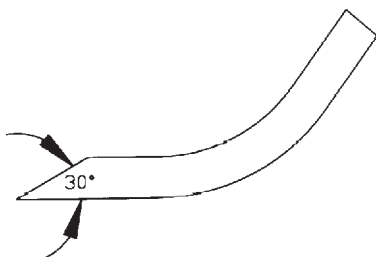
1. Loosen with a box wrench or a socket and long breaker bar. To gain additional leverage, slip a long pipe or thick-walled tube over breaker bar or wrench.
2. Insert wood block **A** as shown, with grain perpendicular to blade, to prevent blade from turning when loosening.
3. Wear thickly padded gloves. Keep hands clear of blade path. Blades may rotate when bolt releases.



SHARPENING

Blades may be sharpened by filing or grinding.

- Inspect blades before sharpening.
- Replace bent or cracked blades.
- Replace blades when the lift portion has worn thin.
- Maintain cut angle at 30°.
- Do not overheat blades when sharpening.
- Always use BOB-CAT blades. Use of another manufacturer's blades may be dangerous.



BLADE BALANCE

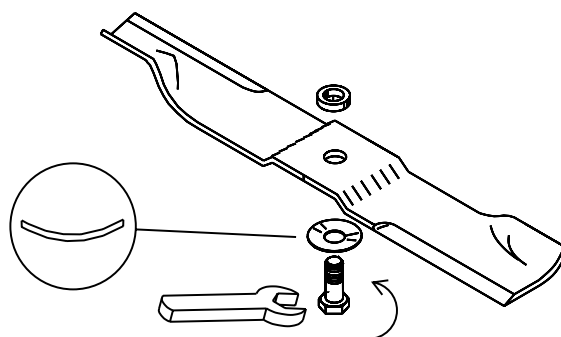
Blade balance must be maintained at 5/8 oz-in (19.4 g-cm) or less. Failure to keep blades balanced causes excess vibration, wear, and shortened life of most components of the machine.

To balance a blade:

1. Sharpen blade first.
2. Balance the blade at the center.
3. Attach a 1/8 oz (3.9 g) weight at a distance 5" (127 mm) from center on the light end. This should make the light end the heavy end:
 - If it does, the blade is balanced.
 - If does not, file or grind the heavy end until the addition of the weight makes the light end the heavy end.

BLADE INSTALLATION

1. Wear thickly padded gloves to prevent cuts from the sharp blade.
2. Insert the blade bolt, in order, through the conical washer (cup side toward the blade, as shown), the blade, and the blade spacer.
3. Install assembly on the blade spindle.
4. Torque the blade bolt to 70 ft-lbs.



BELTS

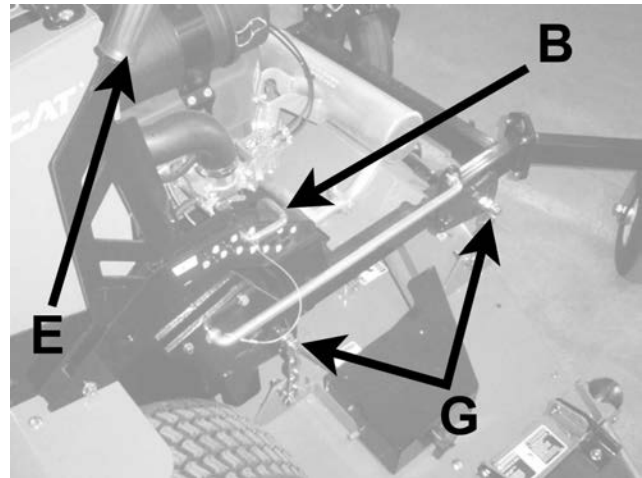
All belts are tensioned by spring loaded idlers. No adjustment is required.

DECK LEVELING

1. Park the machine on a smooth, level surface. Raise the deck to the transport position.
2. Lower the deck onto a set of equal height blocks **A** under the rear corners of the deck. Place another set of blocks under the front of the deck so that the deck top is pitched forward 1/8".

NOTE: The front and rear of the deck are at different heights.

3. Measure the height of the blade cutting edge above the ground. Remove pin **B** and set the height of cut lever **E** to that height.
4. Loosen nuts on bolts **G**. Move bolts in slot to remove slack in chain. Tighten nuts on bolts **G**.

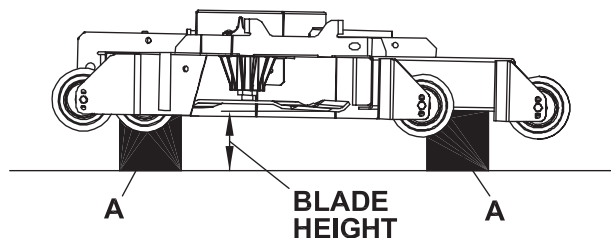


A 1/8" forward pitched deck provides the best horsepower.

A level deck provides the best quality of cut.

A 1/8" rearward pitched deck provides the best striping.

Certain grass types and conditions may vary.



HEIGHT OF CUT

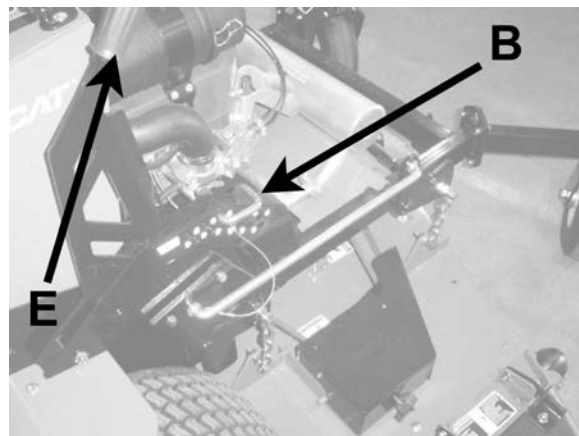
The height of cut is set by moving height of cut pin **B** to the hole designated for the height of cut desired.

To change the height of cut:

1. Lift the deck to the highest position using the lift handle **E**.
2. Move pin **B** to the selected hole.
3. Lower the deck until the lift handle **E** is stopped by the pin.

NOTES:

- Height of cut may vary due to the amount of tread on the tires, tire diameter or inflation pressure.
- For best results, adjust the deck rollers for the height of cut to be used (see below).



QUICKCAT

FRONT DECK LIP

Adjustable front deck lips have been provided on 48in. and 52 in. cutterdecks for various grass types and cutting conditions.

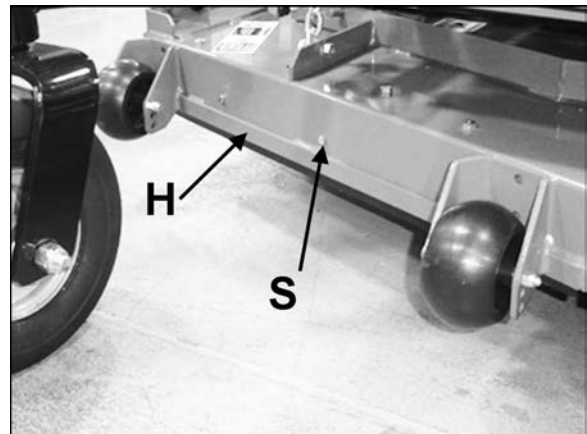
To revise per conditions:

1. Loosen the front bolts **S**.
2. Adjust height of **H**.
3. Retighten **S** once you have desired height.

Suggested heights for grass types:
(Factory setting is all the way down.)

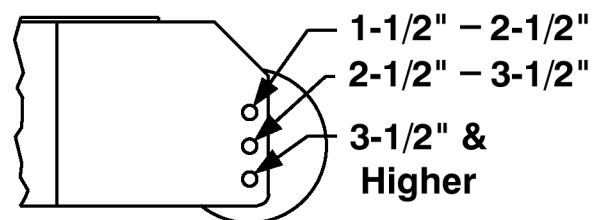
-Southern season grasses generally will work with the lip down. When cutting Bahia grass or other grasses where seed pods grow higher than the actual grass blade, you will want to adjust the lip all the way up.

-Northern season grasses generally require the lip all of the way down.



DECK ROLLERS

The rear outside deck rollers are adjustable up and down to provide improved deck flotation and scalping protection at various heights of cut. They are not intended to ride continuously on the ground. Adjust no closer than 3/8" (10mm) to the ground.



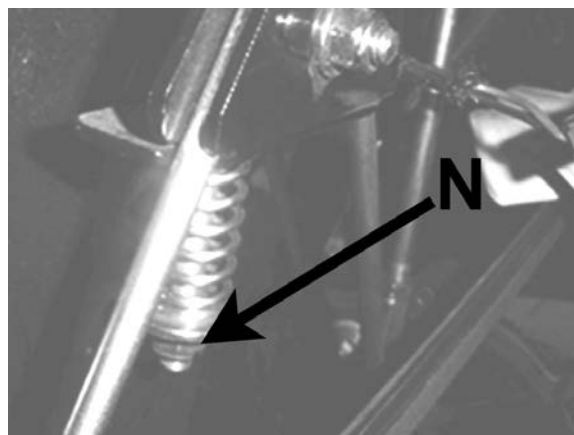
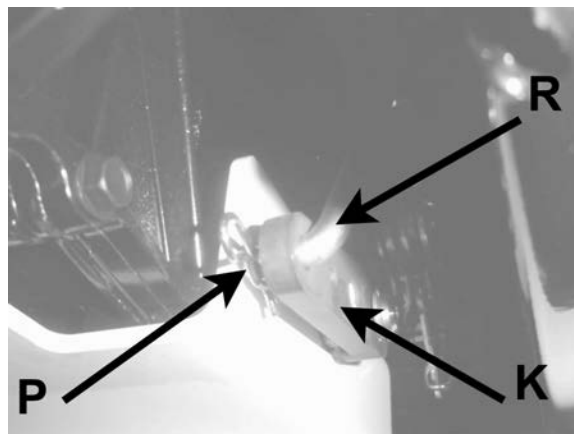
Height of cut ranges for roller adjustment

PARKING BRAKE

NOTE: There are 2 brakes, 1 on each transaxle.

The parking brake should keep the machine from moving. To check the parking brake, park the machine on a level surface, open the bypass valves (See purging transaxles section for instruction) and set the parking brake to **ON**. Attempt to move the machine forward and backward by pushing it. If the machine moves, adjust the parking brake linkage as follows:

1. Move the machine to a flat horizontal surface.
2. Move the parking brake handle to the OFF position.
3. Insure that the brake links **K** are rotated toward the rear of the machine. If not, remove cotter pin **P** from each brake link **K** and brake rod **R**. Slide brake rod **R** out of each brake link **K**. Reinsert rod **R** into each link **K** and secure with cotter pin **P**.
4. Tighten brake nut **N** as needed. The length of the threads protruding past the nut should measure 1/8" - 1/4".
5. Retest to insure the machine does not move.



QUICKCAT

HYDROSTAT TRANSAXLE

A turnbuckle-style hydrostat neutral adjustment is provided.

Neutral adjustment is for setting the location of the control handles with respect to each other or the operator presence slot, or parking brake locks.

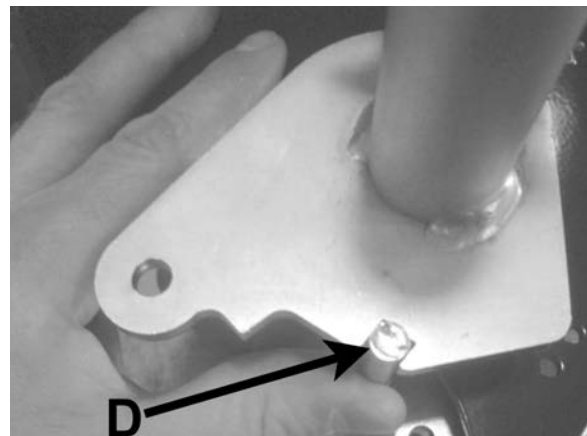
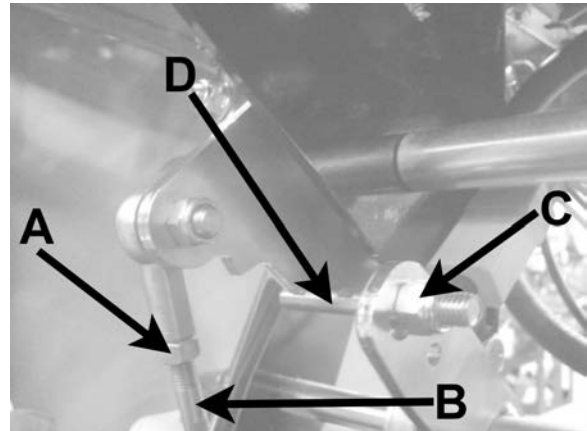
Neutral: (neutral is set by the hydrostatic transaxles)

1. Loosen jam nuts A at both ends of the control rod B.
2. Loosen the nuts C on the control lock rod D.
3. Rotate the control rod B until both left and right handle is aligned with the slot on the control panel.
4. Start the engine and run at low speed.
5. Tighten the jam nuts A at the top and the bottom of the control rod B.
6. Press the control lock rod D into the slot in the control and tighten nut C.

To check:

1. Start the engine and run at 1/2 throttle.
2. With the LH control handle in the NEUTRAL position rotated up, move the parking brake lever to PARK and turn the PTO (Blades) ON. Each check should kill the engine after 1/2 second delay. (A 1/2 second delay is built into the system to prevent engine cut-out when traversing rough terrain.)

Repair machine before using if the Operator Presence Interlock System does not operate correctly in start or run. Contact your authorized BOB-CAT dealer.



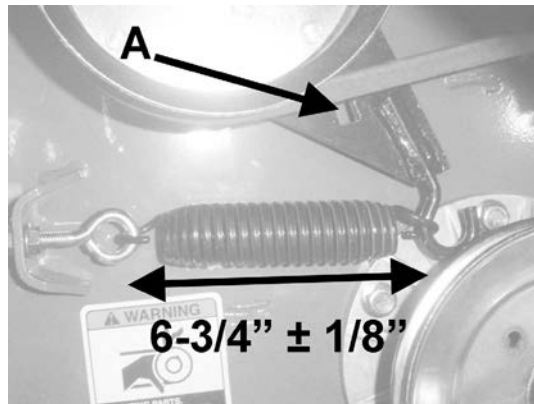
BELT REPLACEMENT



Note: Always use Schiller Grounds Care, Inc. replacement belts, not general purpose belts. Schiller Grounds Care, Inc. belts are specially designed for use on commercial mowers and will normally last longer.

CUTTERDECK BELT

1. Remove center, left and right belt guards.
2. Set the cutterdeck in a middle height-of-cut position.
3. Loosen bolt on belt guide so belt guide can be moved to remove the belt.
4. Insert 3/8" ratchet extension in hole A on the idler arm to back tensioning idler off to remove belt from idler. Remove belt from cutterdeck pulleys.
5. Remove belt from clutch pulley.
6. Install the new belt by performing these steps in reverse order.
7. Cutterdeck spring will require tension adjustment after belt installation. Adjust eyebolt so the distance between the inside of the eyebolt and the inside of the hook is $6\text{-}3/4" \pm 1/8"$.



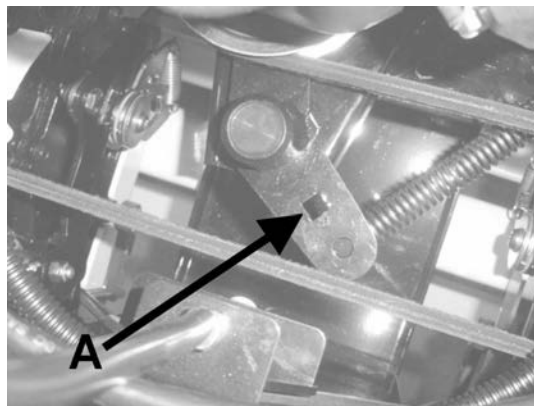
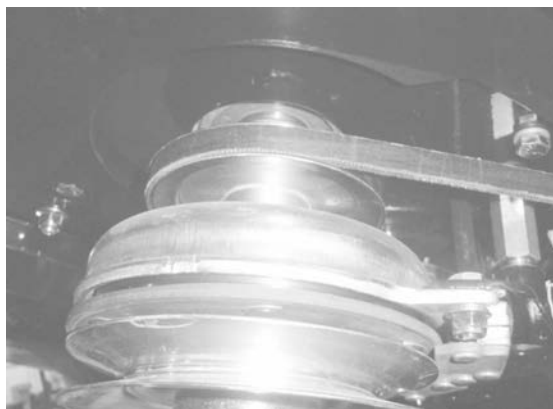
NOTE: After usage of the machine, the belt will seat into the pulleys and reduce the length of the spring. DO NOT READJUST THE EYEBOLT. This is normal. If you do adjust the eyebolt, you will over tension the belt, greatly reducing the belt's life.

TRANSAXLE DRIVE BELT

1. Remove engine-cutterdeck belt. (See cutterdeck belt above)
2. To remove transaxle drive belt, use a 3/8" ratchet and extension. Insert ratchet extension in the square hole A of the transaxle idler arm. Rotate enough to remove the transaxle drive belt.
3. Install a new transaxle drive belt by performing these steps in reverse order.

NOTE: Inspect the fans. Replace if worn or damaged.

5. Reinstall cutterdeck belt and guards.



POWER UNITS

ENGINES:

Construction: Aluminum block with cast-in cast iron sleeves. Aluminum head.

Configuration: 4-stroke, vertical shaft, V-twin cylinder, overhead valve, air-cooled.

DRIVE SYSTEM:

Transaxles: Dual HydroGear ZT3400 Commercial Duty Hydrostatic transaxles (12cc Pumps)

Turn Radius: True Zero

OPERATOR PRESENCE

INTERLOCK SYSTEM:

Start Operation

For the engine to crank, the parking brake must be ON, the PTO (blades) OFF. Stand on the operator platform and check, one by one, if the engine will crank with the parking brake OFF or the PTO (Blades) ON.

Run Operation

In order for the engine to run, the operator must either be standing on the platform, or walking behind the unit with the platform up, the parking brake in the CUT or TRANSPORT position and the LH control handle held down out of the neutral position.

The engine may also run if the parking brake is in the ON position, the LH control handle is in the NEUTRAL position rotated up, and the PTO (blades) are OFF.

To check:

1. Start the engine and run at 1/2 throttle.
2. With the LH control handle in the NEUTRAL position rotated up, move the parking brake lever to OFF and turn the PTO (Blades) ON. Each check should kill the engine after 1/2 second delay. (A 1/2 second delay is built into the system to prevent engine cut-out when traversing rough terrain.)

Repair machine before using if the Operator Presence Interlock System does not operate correctly in start or run. Contact your authorized BOB-CAT dealer.

WEIGHT:

886 lbs (402 kg) w/48" deck

916 lbs (415 kg) w/52" deck

CONTROLS:

Throttle; choke; power takeoff (PTO) clutch switch; control lever; parking brake lever; lift lever.

FUEL SYSTEM:

One tank in the control tower with total capacity 6.5 gallons (24.6 liters). Fuel selector/shut off switch on control panel (3 position - 1/4 turn). Replaceable fuel filter.

MAXIMUM GROUND SPEEDS:

Forward: Transport- 10.5 mph (16.9 km/h)

Cut - 8 mph

Reverse: 4 mph (6.4 km/h)

WHEELS & TIRES:

Drive wheels:

912480: 23 X 8.5-12 4-Ply Turf Tread Tires

912520: 23 X 10.5-12 4-Ply Turf Tread Tires

Casters:

48", 52", : 13 X 6.5-6 tires

Pressure: Rear tires 12 p.s.i. (.84 kg/cm²)
Front tires 15 p.s.i. (1.05 kg/cm²)

SPECIFICATIONS



ENGINES		
MODEL NUMBER	912480	912520
MANUFACTURER	Kawaskai	Kawasaki
MODEL	FX651V	FX730V
CYLINDERS	2	2
COOLING	Air	Air
BORE/STROKE	3.1 X 3.0" (80 X 67 mm)	3.1 X 3.0" (80 X 67 mm)
DISPLACEMENT	44.3 cu. in. (726 cc)	44.3 cu. in. (726 cc)
COMPRESSION	8.2:1	8.2:1
OUTPUT POWER		
OUTPUT TORQUE	39.0 ft-lb (52.8J) @2200 rpm	39.4 ft-lb (53.4J) @2200 rpm
LUBRICATION	FULL PRESSURE	FULL PRESSURE
GOVERNOR	Mechanical	Mechanical
AIR CLEANER	Heavy Duty Cyclonic	Heavy Duty Cyclonic
IGNITION SYSTEM	Electronic	Electronic
CHARGING SYSTEM	15 amp, regulated	15 amp, regulated
BATTERY	BCI group U1	BCI group U1
FUSES	Two, 20 amp blade	Two, 20 amp blade

CUTTERDECKS		
MODEL NUMBER	912480	912520
TYPE	Side Discharge	Side Discharge
CUTTING WIDTH	47.25" (120 cm)	52.5" (133 cm)
WIDTH (CHUTE UP)	48.38" (122.5 cm)	53.88" (137 cm)
WITDH (CHUTE DOWN)	60.88" (154.5cm)	66.38" (168.5 cm)
BLADE	high lift	high lift
NUMBER OF BLADES	3	3
BLADE LENGTH	16.25" (41 cm)	18" (46 cm)
BLADE THICKNESS	.205" (5.2 mm)	.205" (5.2 mm)
TIP SPEED	17773 ft/min 5420 m/min @3600 Engine RPM	18585 ft/min 5665 m/min @3600 Engine RPM
ANTI-SCALP ROLLERS	4	4

CONSTRUCTION:

Fabricated and welded 10-gauge, double-layer steel top with 7-gauge side skirts. Full floating design.

CUTTERDECK DRIVE SYSTEM:

Electric clutch/brake drives belt directly from engine to cutterdeck. No twists in drive belt.

Torque information located on page 12.

SPINDLES:

Top mounted and maintenance free, with 1" shaft in precision machined, aluminum housing

CUTTING HEIGHT & PRODUCTION:

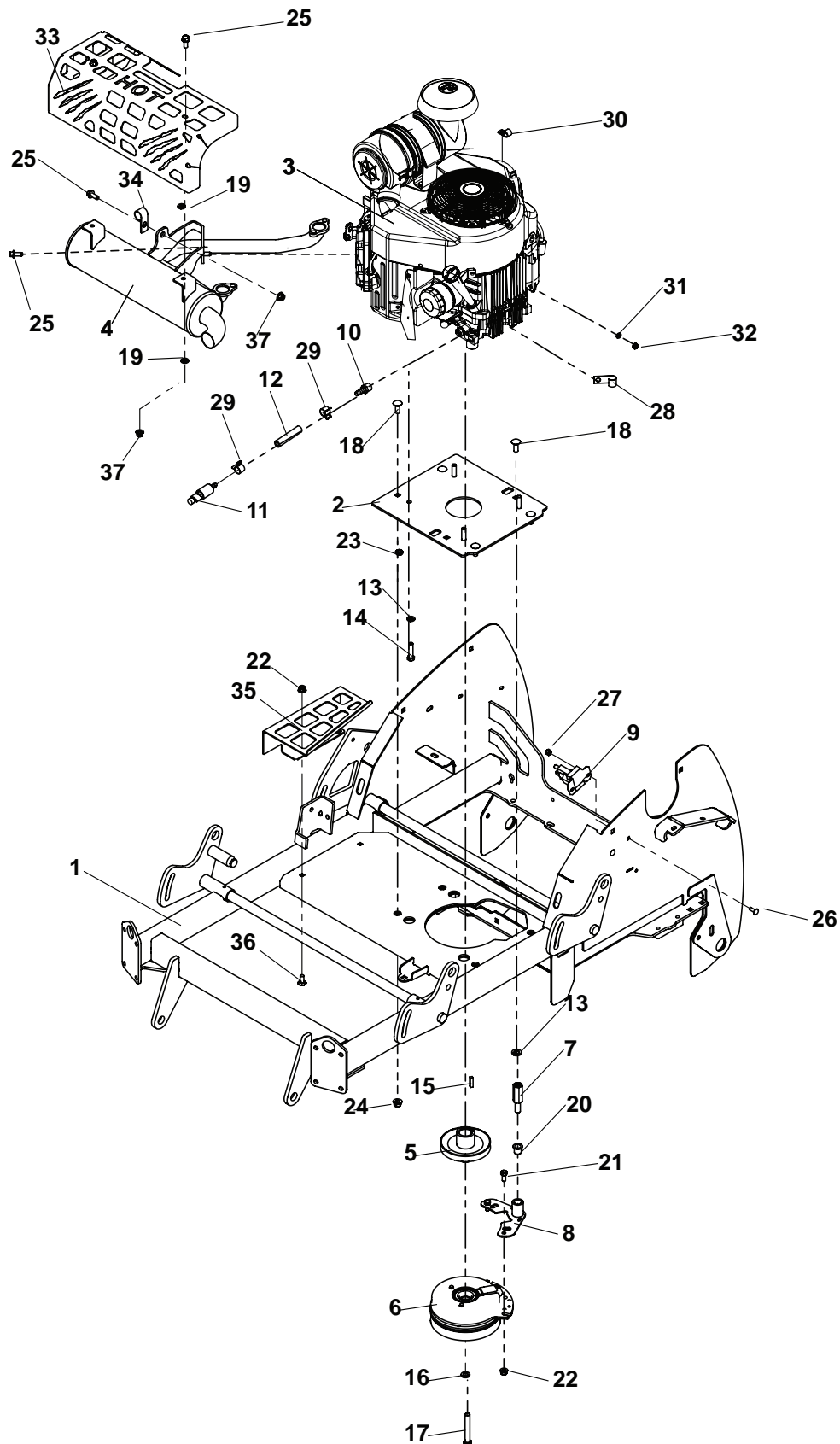
Height: Lever allows easy setting of cut heights from 1-1/2" to 4-1/2" in 1/4" increments.

PARTS SECTION

ENGINE DECK ASSY



FIGURE 1





ENGINE DECK ASSY

QUICKCAT

FIGURE 1

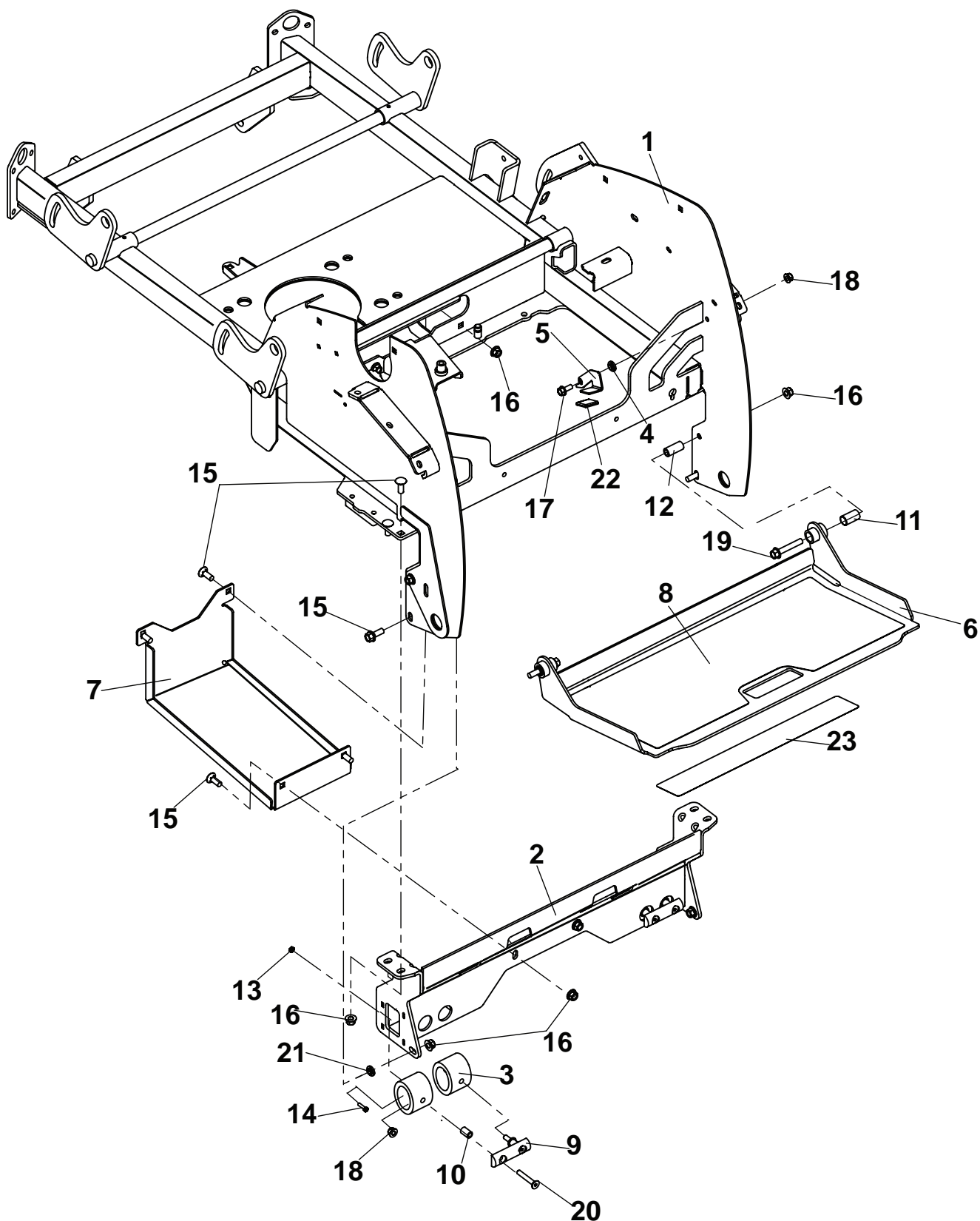
ITEM	PART NO.	DESCRIPTION	QTY	ITEM	PART NO.	DESCRIPTION	QTY
1	4170526.7	WLDMT-FRAME	1				
2	4170550.7	PLATE-ENGINE	1				
3	4164366	ENGINE-22HP KAW FX USED ON 48" ONLY	1				
	4164367	ENGINE-24HP KAW FX USED ON 52" ONLY	1				
4	4170548-01	MUFFLER-ENGINE	1				
*	4170548-02	MANIFOLD-MUFFLER	1				
*	4170548-03	CLAMP-MUFFLER	1				
5	4170170	PULLEY-4.5 INCH	1				
6	4171141	CLUTCH-ELECTRIC	1				
7	4169106	PIN-CLUTCH, TALL	1				
8	4170458.7	WLDMT-CLUTCH STOP	1				
9	38665	SOLENOID	1				
10	4164252-001	FITTING-3/8NPT TO 3/8	1				
11	4164251	DRAIN VALVE	1				
12	69053-05	HOSE-HYD 3/8 ID X 55 (17IN)	1				
13	64006-03	LOCKWSHR-3/8 HELICAL	5				
14	64123-16	BLT-HEX 3/8-16X1-1/4	4				
15	64164-12	KEY-1/4X1 SQ	1				
16	64006-06	LOCKWSHR-7/16 HELICAL	1				
17	64123-155	BLT-HEX 7/16-20 X 3	1				
18	64018-44	BLT-CRG 3/8-16X1 NECK)	5				
19	4171826	WSHR-5/16 TEF	2				
20	38304-03	BEARING-FLANGED PLAS	1				
21	64123-54	BLT-HEX 5/16-18 X .75	2				
22	64268-02	NUT-FL NY LOCK 5/16-18	4				
23	64001-6	NUT-HEX JAM 3/8-16	4				
24	64268-03	NUT-FL NY LOCK 3/8-16	4				
25	64263-007	BLT-FLG HD M8-1.25 X 20	5				
26	64018-2	BLT-CRG 1/4-20X3/4	2				
27	64229-01	NUT-NYLON LOCK 1/4-20	2				
28	48412-01	CLIP-CABLE 3/4 J X 10.32	1				
29	88042-03	CLAMP, HOSE 5/8	2				
30	48228A	CABLE CLIP-INSULATED	1				
31	64006-01	LOCKWSHR-1/4 HELICAL	1				
32	64025-01	1/4-20 HEX NUT	1				
33	4171063.7	GUARD-MUFFLER	1				
34	48228-2A	CLAMP-3/4 CLIP	1				
35	4171542.7	GUARD-EXHAUST MNFLD	1				
36	64018-51	BLT-CRG 5/16-18 X 3/4 SN	2				
37	64266-02	NUT-FL CRWN LCK M8-1.25	3				

* NOT ILLUSTRATED

RIDER PLATFORM ASSY



FIGURE 2





QUICKCAT

RIDER PLATFORM ASSY

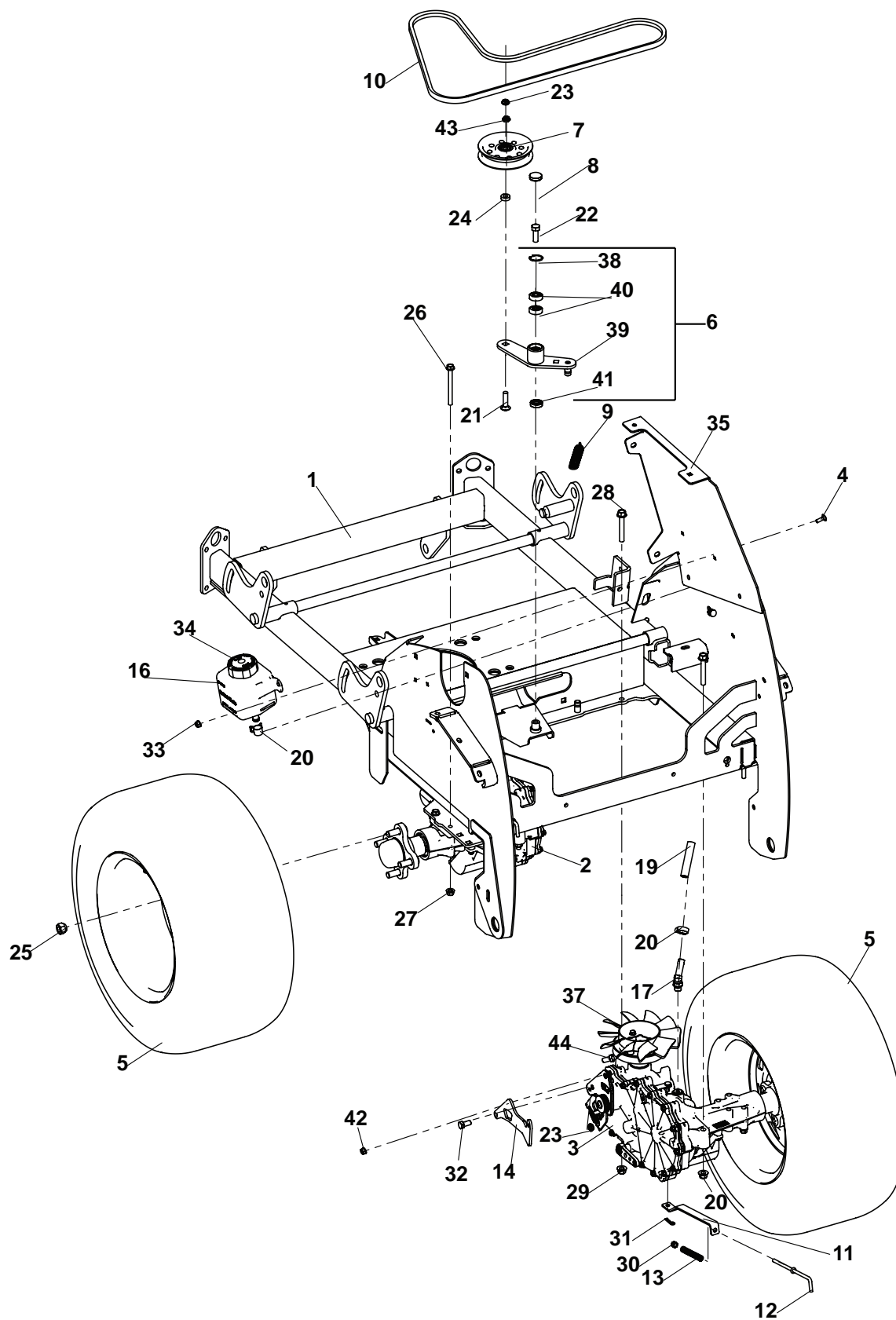
FIGURE 2

ITEM	PART NO.	DESCRIPTION	QTY	ITEM	PART NO.	DESCRIPTION	QTY
1	4170526.7	WLDMT-FRAME	1				
2	4171132.7	WLDMT-FTPLTE MOUNT	1				
3	4170585	BUMPER-RADIAL	4				
4	4170388	SPACER-FTPLATE LATCH	1				
5	4170383.2	BRKT-LATCH, FOOTPLATE	1				
6	4171366	S-FOOTPLATE w/ LABELS	1				
7	4171113.7	PLATE-TANK SKID	1				
8	4170670	MAT-FOOTPLATE	1				
9	4171114	BUMPER-FOOTPLATE	2				
10	4171570	BUSHING-.875 X.344X1.125	4				
11	4166324-04	BEARING-SLEEVE	2				
12	4171254	SPACER-.625X11GAX1.375	2				
13	64025-15	NUT-HEX #10-24 KEPS	4				
14	64152-49	SCREW-SLT HH 10-24X3/4	4				
15	64018-44	BLT-CRG 3/8-16X1	10				
16	64268-03	NUT-FL NYLON LOCK 3/8-16	12				
17	64262-006	BLT-FLG HD 5/16-18 X 3/4	1				
18	64268-02	NUT-FL NYLON LOCK 5/16-18	5				
19	64262-027	BLT-FLG HD 3/8-16 X 2-1/4	2				
20	64272-03	FLT-HEX SCR 5/16-18X2-1/2	4				
21	64163-31	WSHR 25/64X1X12	2				
22	4171365	CAP-LATCH FOOTPLATE	1				
23	4165657	LABEL-BOB-CAT	1				

WHEEL & TRANSAXLE ASSY



FIGURE 3





WHEEL & TRANSAXLE ASSY

QUICKCAT

FIGURE 3

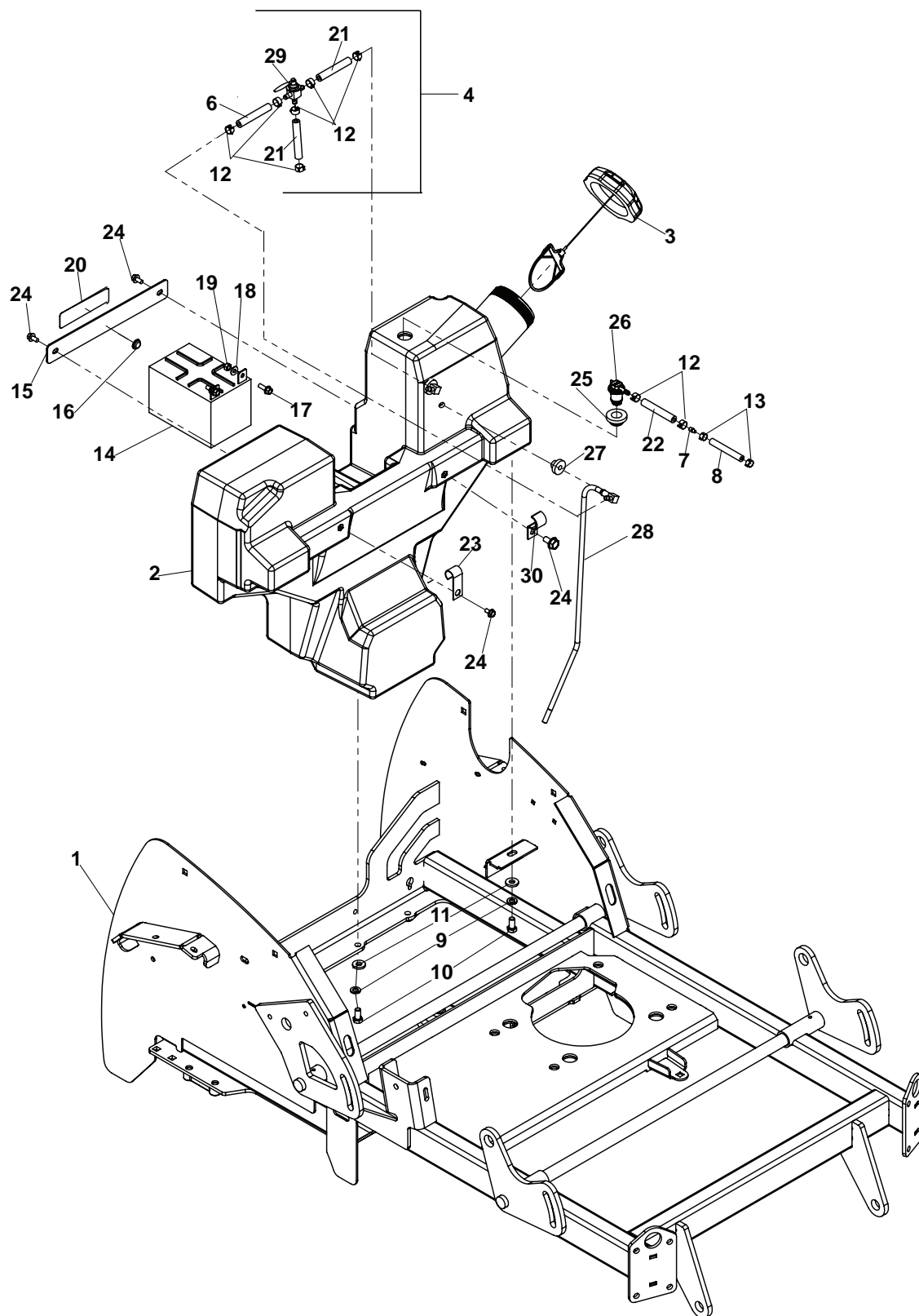
ITEM	PART NO.	DESCRIPTION	QTY	ITEM	PART NO.	DESCRIPTION	QTY
1	4170526.7	WLDMT-FRAME	1	28	64262-025	BLT-FLG HD 3/8-16 X 2-1/2 LG	4
2	4171630	S-ASSYTRANSAXLE-LH (INCLUDES ITEM 37)	1	29	64268-03	NUT-FL NYLON LOCK 3/8-16	4
3	4171631	S-ASSYTRANSAXLE-RH (INCLUDES ITEM 37)	1	30	64229-01	NUT-NYLON LOCK 1/4-20	2
4	64018-2	BLT-CRG 1/4-20X3/4	2	31	64168-2	COTTER-HAIRPIN .08 X 1.19	2
5	4165552	WHEEL-ASSY, 23X10.50-12 USED ON 52" ONLY	2	32	64123-15	BLT-HEX 3/8-16X3/4	2
	4166825	WHEEL-ASSY 23 X 8.5-12 USED ON 48" ONLY	2	33	64268-01	NUT-FL NYLON LOCK 1/4-20	2
6	4170275	ASSY-IDLER ARM (INCLUDES ITEMS 38-41)	1	34	4142808-01	CAP-TANK, HYDRA	1
7	2308000	PULLEY-IDLER 4.00 EOD	1	35	4170574.2	PANEL-UPPER TOWER,RH	1
8	4128002	CAP-26 X 7 END	1	36*	4170575.2	PANEL-UPPER TOWER,LH	1
9	2188131	SPRING, EXT	1	37	4171150	KIT-FAN/PULLEY TRNSXL	2
10	4170486	BELT-TRANSAXLE DRIVE	1	38	64144-40	SNAP RING-26MM INTERNAL	1
11	4148698.7	LINK-DUMP VALVE	2	39	4170274.7	WLDMT-IDLER ARM	1
12	4148697	ROD-PULL FREEWHEEL	2	40	4128004	BEARING-BALL 10 X 26 X 8	2
13	2720977	SPRING-COMPRESSION	2	41	4127999	SEAL-16 X 24 X 7	1
14	4170541.7	PLATE-TRANSAXLE, RH	1	42	64229-04	NUT-NYLON LOCK 7/16-14	2
15*	4170334.7	PLATE-TRANSAXLE, LH	1	43	64163-61	WSHR .81X.406X16GA	1
16	4170618	TANK-HYDR, EXPAN W/CAP	1	44	64123-38	BLT-HEX 7/16-14X1	2
17	2690030-02	FTG-9/16-18 ORB X 1/2	2				
18*	4171584-01	TUBING-1/2ID CLEAR, 15IN	1				
19	4171584-02	TUBING-1/2ID CLEAR, 29IN	1				
20	108094-13	CLAMP-HOSE SAE4	4				
21	64018-49	BLT-CRG 3/8-16 X 1-1/2	1				
22	64270-01	BLT-HEX M10-1.5x30	1				
23	64151-34	NUT-HEX LOCK, 3/8-16 JAM	3				
24	33148-01	SPACER-0.379X0.750X0.25	1				
25	64187-03	NUT-WHEEL 1/2-20	8				
26	64139-30	BLT-WLFS 5/16-18 X 3-1/2	4				
27	64268-02	NUT-FL NYLON LOCK 5/16-18	4				

*NOT ILLUSTRATED

FUEL TANK & BATTERY ASSY



FIGURE 4





FUEL TANK & BATTERY ASSY

QUICKCAT

FIGURE 4

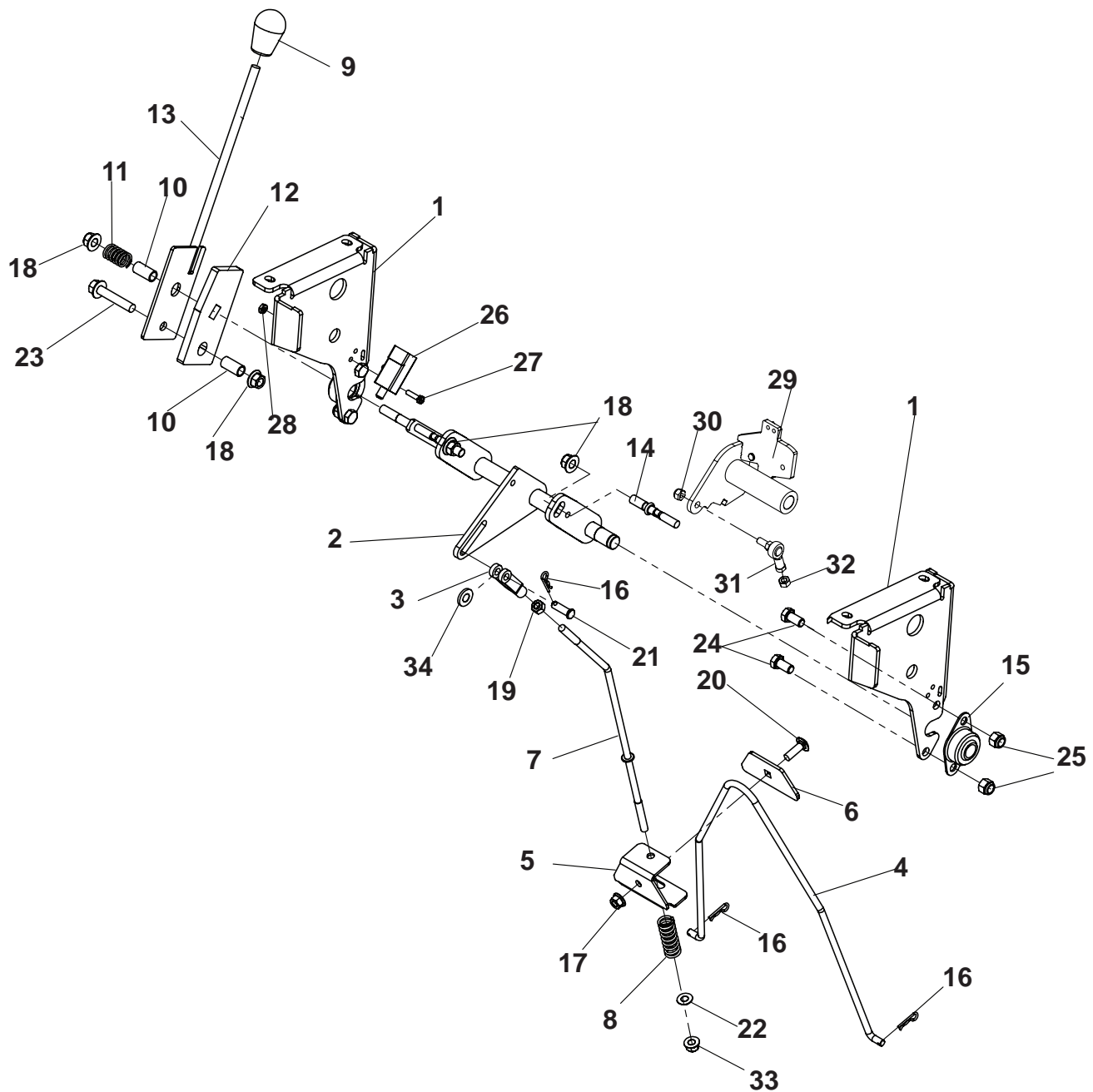
ITEM	PART NO.	DESCRIPTION	QTY	ITEM	PART NO.	DESCRIPTION	QTY
1	4170526.7	WLDMT-FRAME	1				
2	4170922	TANK-FUEL (INCLUDES ITEMS 25-28)	1				
3	4165291	CAP-FUEL, RATCHET STYLE	1				
4	4171330	ASSY-HOSE, FUEL (INCLUDES ITEMS 5,6,12, 21 &29)	1				
5*	56-076-01	SLEEVING-NYLON 3"	1				
6	4162977-009	HOSE, FUEL LINE 19 INCH	1				
7	4165864	FITTING, 1/4 TO 3/16	1				
8	4162989-001	HOSE-FUEL LINE, 24IN	1				
9	64006-03	LOCKWSHR-3/8 HELICAL	4				
10	64123-50	BLT-HEX 3/8-16X1	4				
11	64163-69	WSHR .391X.88X10 GA	4				
12	88042N	CLAMP-HOSE	8				
13	88042-01	CLAMP-HOSE 3/16	2				
14	4171099	BATTERY-190CCA	1				
*	4171973	CHARGER-BATTERY, AGM					
15	4168635	S-BRKT, BATTERY W/LABS	1				
16	4171586	BUMPER-RUBBER	1				
17	64262-002	BLT-FLG HD 1/4-20 X 3/4	2				
18	64163-03	WSHR .256ID X.62OD X 18 GA.	2				
19	64025-01	1/4-20 HEX NUT	2				
20	2000590	LABEL-WARN BATTERY	1				
21	4162977-005	HOSE, FUEL LINE 15 INCH	2				
22	4162977-007	HOSE, FUEL LINE 6 INCH	1				
23	48412-01	CLIP- J CABLE	1				
24	64139-02	BLT-WLF 1/4-20 X1/2	4				
25	4165387	GROMMET-ROLLOVER VENT	1				
26	4165763	TANK VENT	1				
27	4132325	GROMMET-SEALING	2				
28	4170922-02	TUBE-FUEL, PICK-UP	2				
29	2188161	VALVE-TANK SELECTOR	1				
30	4171606	CLAMP-HALF, 5/8 HOSE	1				

*NOT ILLUSTRATED

PARKING BRAKE ASSY



FIGURE 5





QUICKCAT

PARKING BRAKE ASSY

FIGURE 5

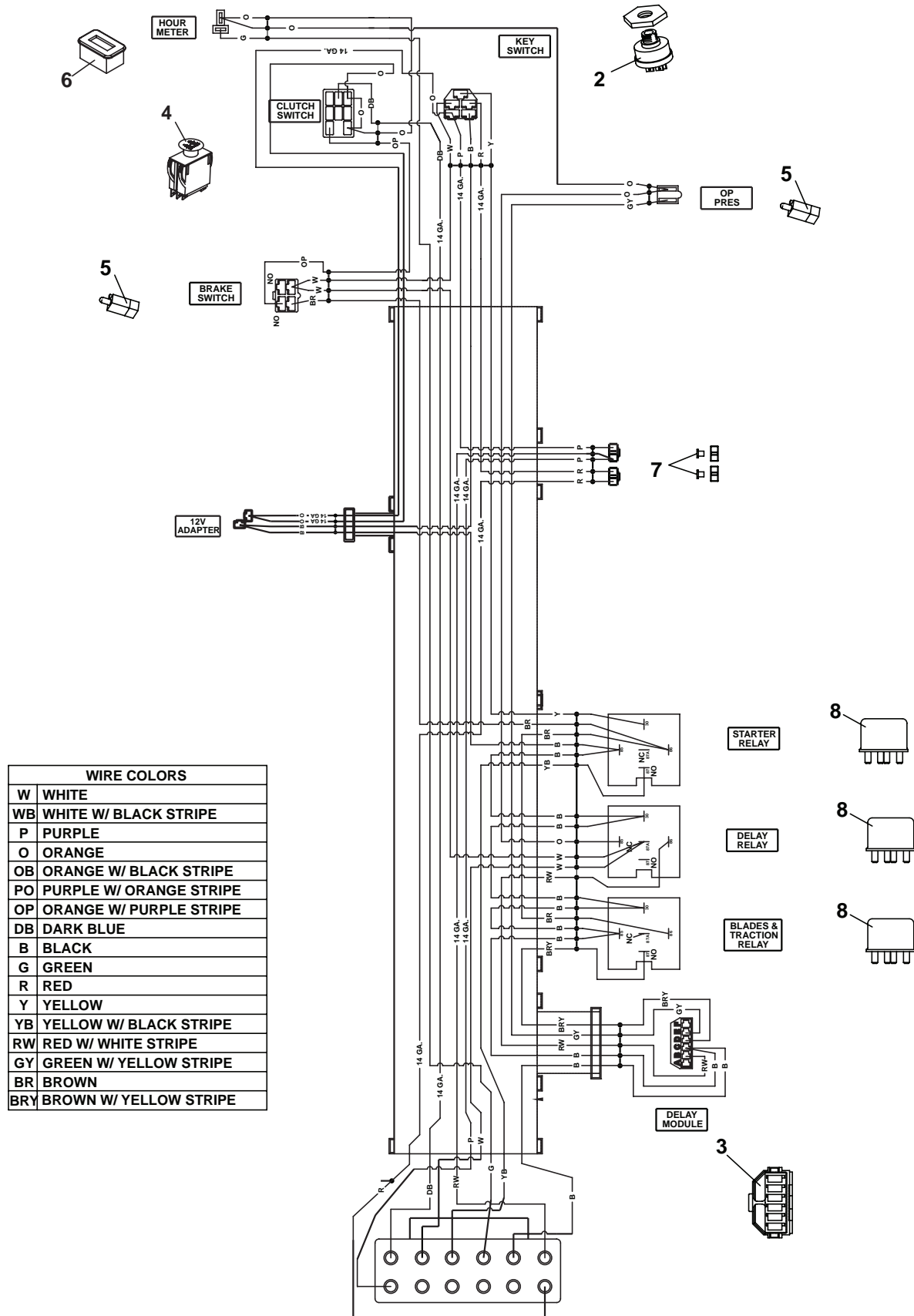
ITEM	PART NO.	DESCRIPTION	QTY	ITEM	PART NO.	DESCRIPTION	QTY
1	4170784.7	BRACKET-CONTROL	2				
2	4170935	WLDMT-PRKNG BRK CNTRL	1				
3	38020N	CLEVIS YOKE 5/16 PLATE	1				
4	4170367	ROD-PRKNG BRAKE, LWR	1				
5	4170962.7	BRACKET-CLIP, RETAINER	1				
6	4170961.7	PLATE-PARKING, KEEPER	1				
7	4170540	ROD-PRKNG BRAKE, UPR	1				
8	4155481	SPRING-COMPRESSION	1				
9	4168180	KNOB-PUSH ON	1				
10	516544	BUSHING (PLATING)	2				
11	41-053	SPRING, COMPRESSION	1				
12	4170934.7	PLATE-BRK&SPD CNTRL	1				
13	4170573	WLDMT-SPEED CONTROL	1				
14	4171035	ROD-CONTROL LOCK	2				
15	2188145-01	BEARING-.625ID BRZ	2				
16	64168-2	COTTER-HAIRPIN .08X1.19	3				
17	64268-02	NUT-FL NYLN LOCK 5/16-18	1				
18	64268-03	NUT-FL NYLN LOCK 3/8-16	4				
19	64025-03	NUT-HEX 5/24	1				
20	64018-15	BLT-CRG 5/16-18X1	1				
21	64188-02	PIN-CLEVIS 5/16 X 1.0	1				
22	64163-29	WSHR-21/64X1X 11GA	1				
23	64262-014	BLT-FLG HD 3/8-16 X 2	1				
24	64123-15	BLT-HEX 3/8-16X3/4	4				
25	64229-03	NUT-NYLON LOCK 3/8-16	4				
26	2188156	SWITCH-NONO DBL POLE	1				
27	64152-49	SCREW-SLT HH 10-24X3/4	2				
28	64025-15	NUT-HEX #10-24 KEPS	2				
29	4171593	S-CONTROL W/ BRGS	1				
30	64229-08	LOCKNUT NYLON 5/16-24	1				
31	4167343-02	ROD END-5/16 FEM LFT	1				
32	64025-33	NUT-HEX 5/16-24 LH	1				
33	64229-08	NUT-LOCK, 5/16-24	1				
34	64163-31	WSHR-25/64 X 1 X 12	1				

*NOT ILLUSTRATED

UPPER WIRE HARNESS



FIGURE 6





QUICKCAT

UPPER WIRE HARNESS

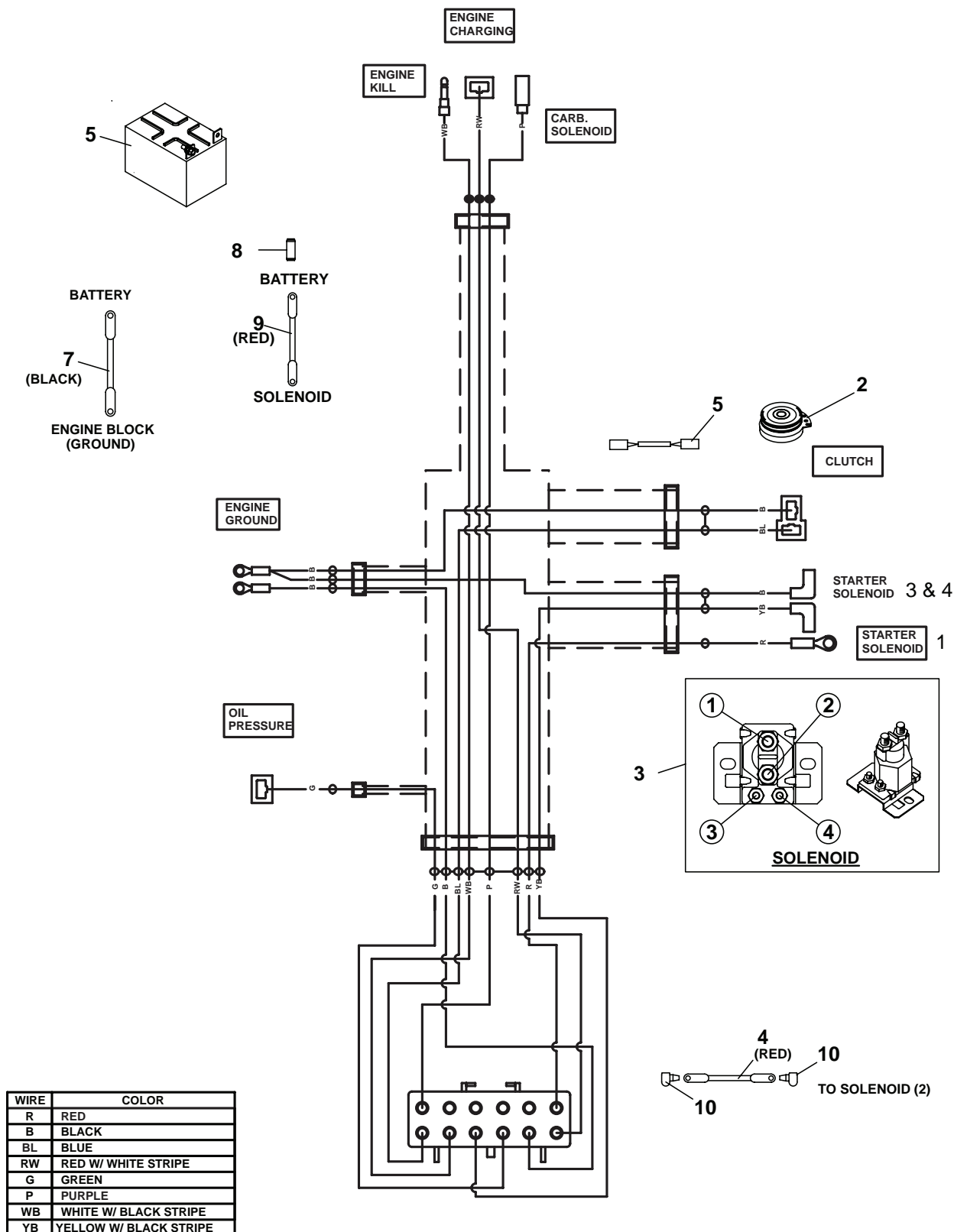
FIGURE 6

ITEM	PART NO.	DESCRIPTION	QTY	ITEM	PART NO.	DESCRIPTION	QTY
1	4170955	HARNESS-WIRING, UPPR	1				
2	128010	SWITCH, KEY	1				
3	2188154	MODULE-DELAY	1				
4	2721505	SWITCH-PTO	1				
5	2188156	SWITCH-NONO DBL POLE	1				
6	4165120	METER-HOUR W/ SERV ALERT	1				
7	148082-20	FUSE-20 AMP	2				
8	2722325	RELAY-40AMP SEALED	3				

LOWER WIRE HARNESS



FIGURE 7





LOWER WIRE HARNESS

QUICKCAT

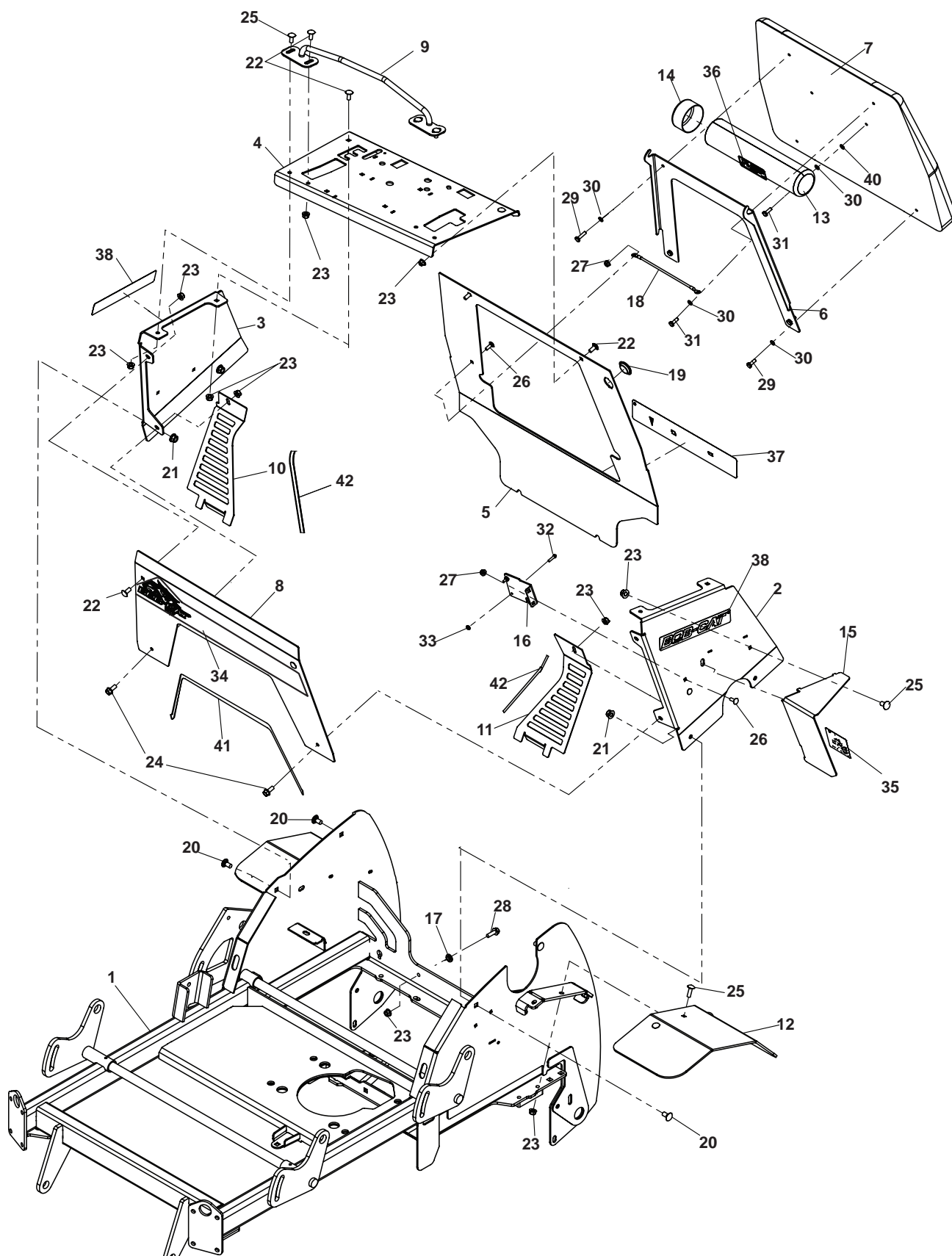
FIGURE 7

ITEM	PART NO.	DESCRIPTION	QTY	ITEM	PART NO.	DESCRIPTION	QTY
1	4170511	HARNESS-WIRING, LOWER	1				
2	4171141	CLUTCH-ELECTRICAL	1				
3	38665	SOLENOID	1				
4	108061-04	CABLE-BATTERY 20 RED	1				
5	2720949	ASSY-CLUTCH WIRE	1				
6	4171099	BATTERY-190CCA	1				
*	4171973	CHARGER-BATTERY,AGM					
7	30-419	CABLE-BATTERY BLACK 29	1				
8	112386	BOOT-BATTERY TERM POS	2				
9	2722227-03	CABLE-BATTERY W/CONDUIT	1				
10	2308095	COVER-TERMINAL	2				

TOWER ASSY



FIGURE 8





TOWER ASSY

QUICKCAT

FIGURE 8

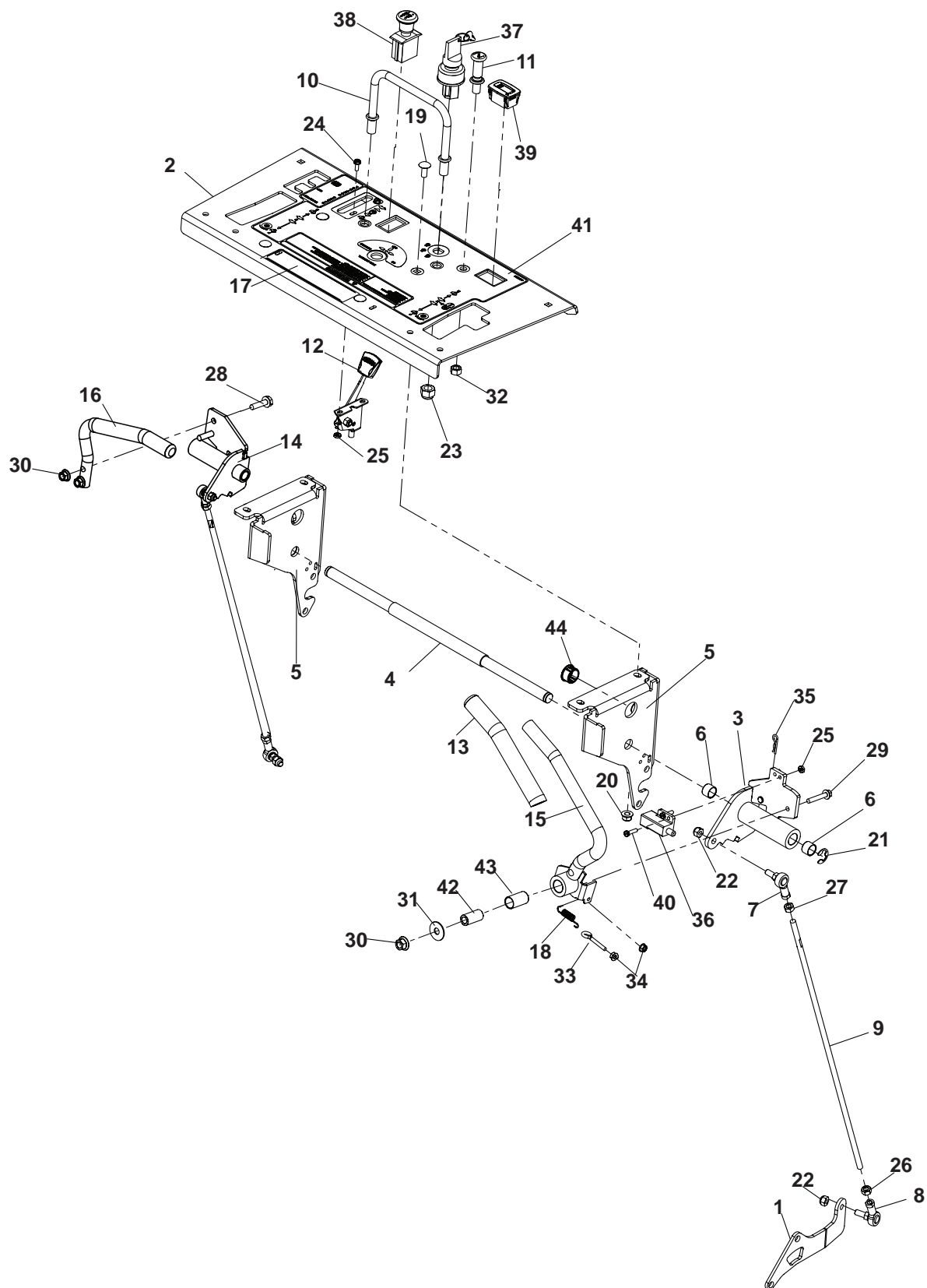
ITEM	PART NO.	DESCRIPTION	QTY	ITEM	PART NO.	DESCRIPTION	QTY
1	4170526.2	WLDMT-FRAME	1				
2	4170575.2	PANEL-UPPER TOWER,LH	1				
3	4170574.2	PANEL-UPPER TOWER,RH	1				
4	4171367	S-CONTROL PANEL W/ LAB	1				
5	4170576.2	PANEL-REAR TOWER	1				
6	4170384.7	BRKT-PAD,SUPPORT	1				
7	4170376	PAD-RIDER, STAND-ON	1				
8	4170578.2	PANEL-TOWER FRONT	1				
9	4170593.7	WLDMT-FRONT	1				
10	4170600.7	GUARD-FAN, RH	1				
11	4170601.7	GUARD-FAN, LH	1				
12	4170598.2	FENDER-WHEEL	2				
13	4160281	S-TUBE-DOC W/LABEL	1				
14	38061A	CAPS VINYL	1				
15	4171368	S-BRKT, SHIELD W/ LABEL	1				
16	4170713.7	BRKT-RELAY MNTG	1				
17	4170388	SPACER-FTPLT LATCH	2				
18	4171100	TETHER-WIRE, COATED	1				
19	4167193	PLUG-PLASTIC, 1.125"	1				
20	64018-23	BLT-CRG 3/8-16X3/4	4				
21	64268-03	NUT-FL NYLON LOCK 3/8-16	4				
22	64018-51	BLT-CRG 5/16-18 X 3/4 S/N	10				
23	64268-02	NUT-FL NYLN LOCK 5/16-18	22				
24	64262-006	BLT-FLG HD 5/16-18 X 3/4	2				
25	64018-15	BLT-CRG 5/16-18X1	8				
26	64018-2	BLT-CRG 1/4-20X3/4	3				
27	64268-01	NUT-FL NYLON LOCK 1/4-20	3				
28	64262-007	BLT-FLG HD 5/16-18 X 1	2				
29	64123-89	BLT-HEX 1/4-20X3/4	3				
30	64006-01	LOCKWSHR-1/4 HELICAL	6				
31	64123-114	BLT-HEX 1/4-20 X 1	3				
32	64152-49	SCREW-SLT HH 10-24X3/4	2				
33	64025-15	NUT-HEX #10-24 KEPS	2				
34	4171352	LABEL-QUICKCAT	1				
35	2000570	DECAL-EXPLOSIVE FUEL	1				
36	2000735	LABEL-OPER MAN	1				
37	4164406	LABEL-BOB-CAT	1				
38	4171614	LABEL-BOBCAT	2				
39*	4170623	LABEL-CONTROL PANEL	1				
40	64163-02	WSHR.321x.593x11GA	2				
41	56-046-03	TRIM-LOC 28.5"	1				
42	56-046-01	TRIM-LOC 9"	1				

*NOT ILLUSTRATED

CONTROLS



FIGURE 9





CONTROLS

QUICKCAT

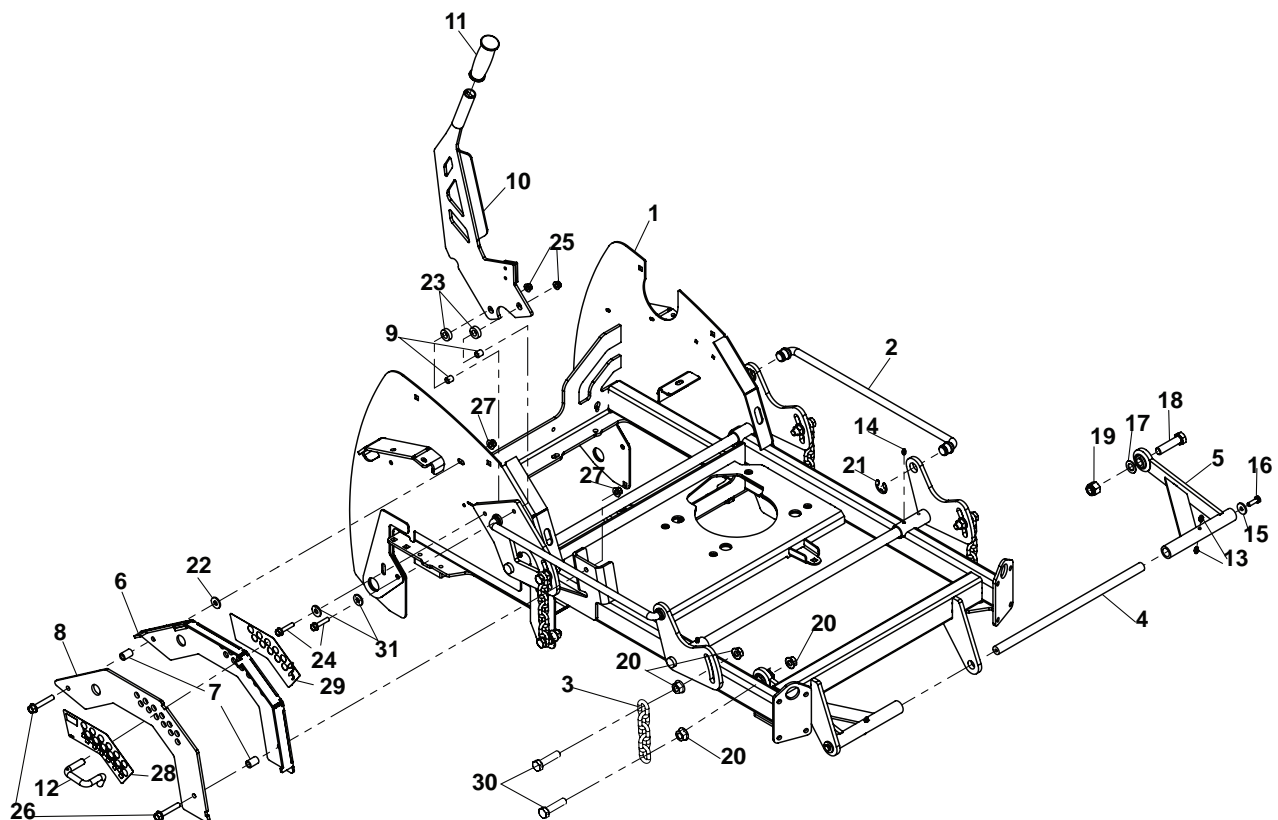
FIGURE 9

ITEM	PART NO.	DESCRIPTION	QTY	ITEM	PART NO.	DESCRIPTION	QTY
1	4170334.7	PLATE-TRANSAXLE, LH	1				
2	4171367	S-PANEL-CONTROL W/LAB	1				
3	4171593	S-CONTROL,LH	1				
		(INCLUDES ITEM 6)					
4	4170532	SHAFT-CONTROL HANDLE	1				
5	4170784.7	BRKT-CONTROL	2				
6	4166324-05	BEARING-SLEAVE .625X.50	4				
7	4167343-02	ROD END-5/16 FEM LFT	2				
8	4167343-01	ROD END-5/16 FEM RHT	2				
9	4170529	ROD-CONTROL	2				
10	4170528	ROD-REAR	1				
11	108009-03	CONTROL-CHOKE 51	1				
12	118020-22	CONTROL-THROTTLE, 57.5IN	1				
13	4170916	GRIP-CONTROL	2				
14	4171594	S-CONTROL,RH	1				
		(INCLUDES ITEM 6)					
15	4171587	WLDMT-CONTROL HANDLE	1				
16	4171171	S-HANDLE OP PRESENCE	1				
17	4171344	LABEL-OPS MANUAL	1				
18	4171461	SPRING, EXT	1				
19	64018-51	BLT-CRG 5/16-18 X 3/4 SN	4				
20	64268-02	NUT-FL NYLON LOCK 5/16-18	4				
21	64221-02	E-RING .625	2				
22	64229-08	LOCKNUT NYLON 5/16-24	4				
23	64229-05	NUT-NYLON LOCK 1/2-13	2				
24	64152-46	SCREW-SLT HH 10-24X1/2	2				
25	64025-15	NUT-HEX #10-24 KEPS	4				
26	64025-03	NUT-HEX 5/24	2				
27	64025-33	NUT-HEX 5/16-24 LH	2				
28	64262-013	BLT-FLG HD 3/8-16 X 1-1/2	2				
29	64262-027	BLT-FLG 3/8-16 X 2-1/4	1				
30	64268-03	NUT-FL NYLON LOCK 3/8-16	3				
31	64163-31	WSHR-.25/64X1X12	1				
32	64025-04	NUT-3/8-24 HEX	1				
33	64158-01	EYE BOLT-10-24 X 1.25	1				
34	64141-15	NUT-WLF 10-24	2				
35	64168-2	COTTER-HAIRPIN .08 X 1.19	1				
36	2188156	SWITCH-NONO DBL POLE	1				
37	128010	SWITCH KEY 5	1				
38	2721505	SWITCH-PTO	1				
39	4165120	METER-HOUR, ALERTS	1				
40	64152-49	SCREW-SLT HH 10-24X3/4	2				
41	4170623	LABEL-CONTROL	1				
42	4171409	SPACER-.625X.386X1.26	1				
43	4166324-04	BEARING-PLASTIC .625X1	1				
44	4171648	BUSHING-1.0 IN STRAIN	1				

DECK LIFT ASSY



FIGURE 10





DECK LIFT ASSY

QUICKCAT

FIGURE 10

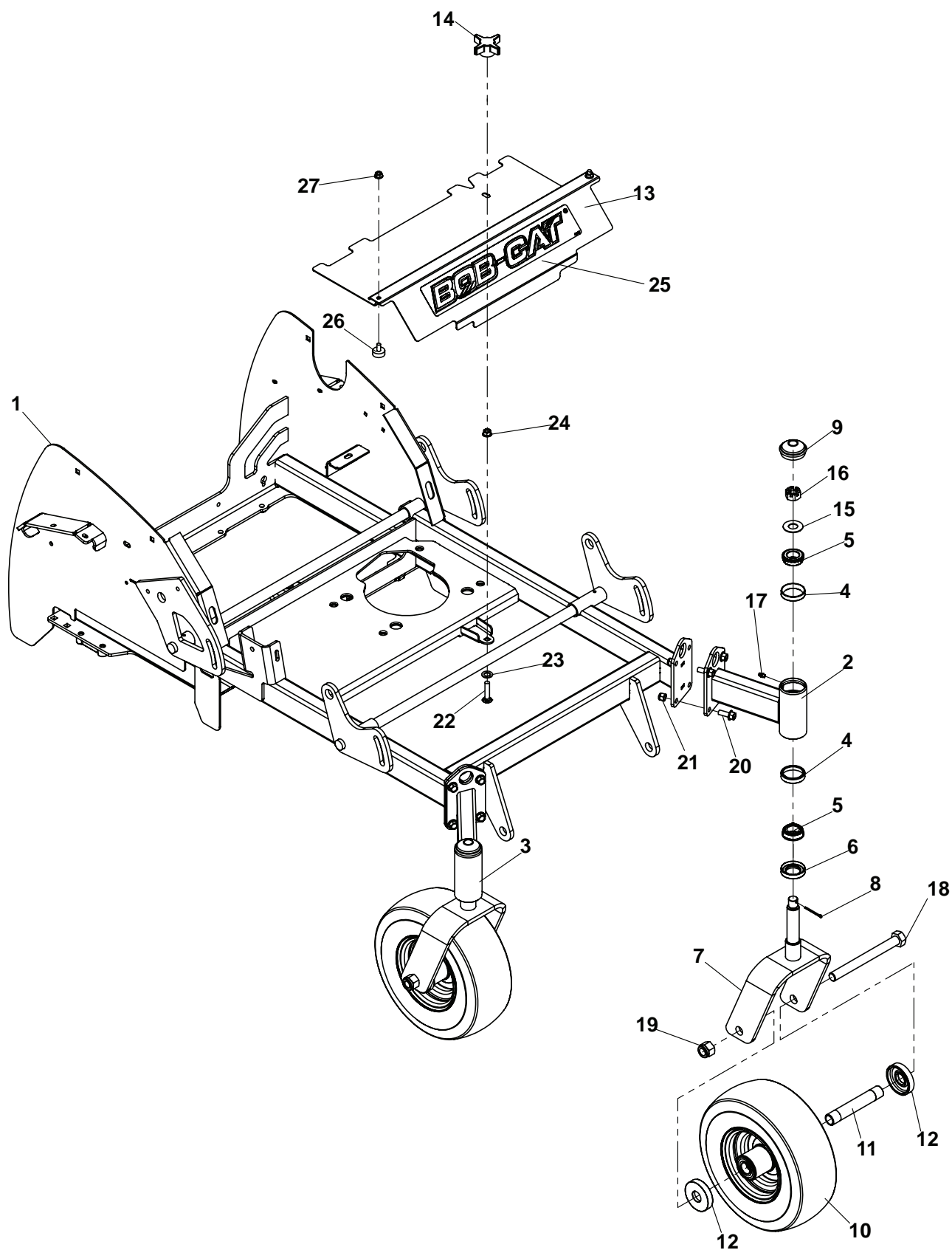
ITEM	PART NO.	DESCRIPTION	QTY	ITEM	PART NO.	DESCRIPTION	QTY
1	4170526.7	WLDMT-FRAME	1				
2	4167826	ROD-DECK LIFT	2				
3	4169126	CHAIN-6.35 (.25) 7 LINKS	4				
4	4162973	BAR-PULLARM PIVOT	1				
5	4163957.7	WELDMENT, PULL ARM	2				
6	4170546.7	WLDMT-HOC	1				
7	2183071-03	SPACER	2				
8	4170544.7	PLATE-HOC, OUTSIDE	1				
9	4171846	SPACER-HOC ARM	2				
10	4170542.7	WLDMT-HOC HANDLE	1				
11	522727	GRIP-HANDLE	1				
12	4165656	PIN-DECK LIFT	1				
13	85010N	ZERK 1/4-28 STR SLFTH	4				
14	4168424	ZERK 1/4-28 STR THD	4				
15	64163-29	WSHR-21/64 x 1 x 11GA	2				
16	64123-68	BLT-HEX 5/16-18X1	2				
17	64163-93	WSHR-.63/.65 X 1.12 X .062	2				
18	64123-168	BLT-HEX 5/8-11X2-1/2	2				
19	64229-06	NUT-NYLON LOCK 5/8-11	2				
20	64141-13	NUT-WLF 1/2-13	16				
21	64221-04	E-RING .875	4				
22	64163-31	WSHR-25/64 X 1 X 12	1				
23	517162	SPACER .328 (8mm)	2				
24	64262-028	BLT-FLG HD 5/16-18 X 1-1/2	2				
25	64268-02	NUT-FL NYLN LCK 5/16-18	2				
26	64262-027	BLT-FLG HD 3/8-16 X 2-1/4	2				
27	64268-03	NUT-FL NYLN LCK 3/8-16	2				
28	4170653	LABEL-HOC	1				
29	4170988	LABEL-HOC	1				
30	64123-281	BLT-HEX 1/2-13X2 FL THD	8				
31	64163-55	WSHR-.328X.75X14GA	2				

* NOT ILLUSTRATED

CASTER ASSY



FIGURE 11





QUICKCAT

CASTER ASSY

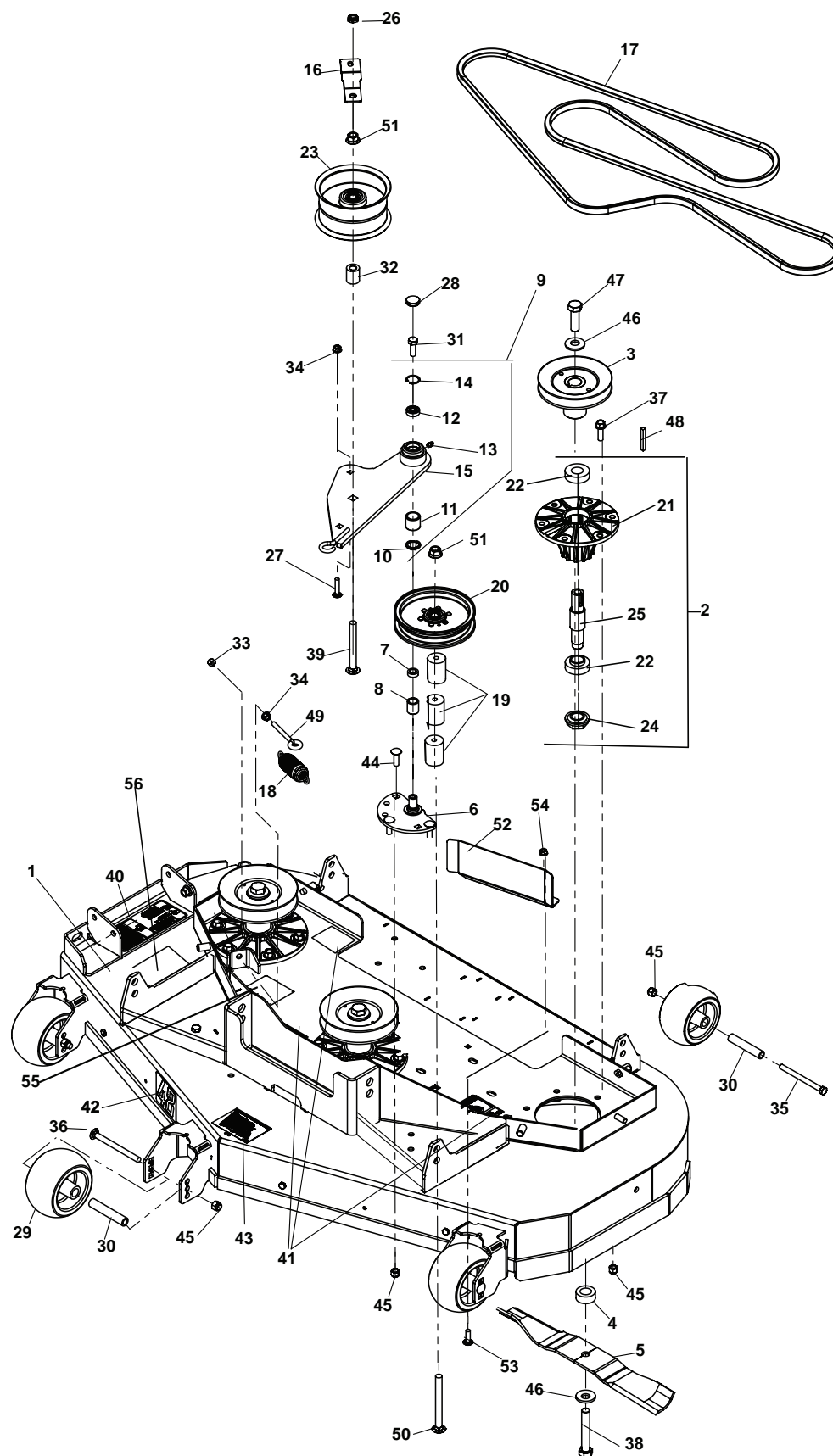
FIGURE 11

ITEM	PART NO.	DESCRIPTION	QTY	ITEM	PART NO.	DESCRIPTION	QTY
1	4170526.7	WLDMT-FRAME	1				
2	4170130.7	WLDMT-CASTER ARM, LH (INCLUDES ITEM 4)	1				
3	4170131.7	WLDMT-CASTER ARM, RH (INCLUDES ITEM 4)	1				
4	48043-03C	CUP OUTER BEARING	4				
5	48043-04C	CONE-OUTER BEARING	4				
6	48480	SEAL CR 12411	2				
7	4170126.7	WLDMT-CASTER YOKE	2				
8	64140-5	COTTER PIN-1/4-2	2				
9	4162986	CAP-END	2				
10	2722228	ASSY-WHEEL 13X5.00-6	2				
11	2722230-02	SPANNER	2				
12	2722231	SPACER-END	4				
13	4170372.2	COVER-BELT, CNTR	1				
14	38524	KNOB-4 PRONG 3/8-16	1				
15	64163-26	WSHR .766 ID X 1.625	2				
16	64025-20	NUT-HEX 3/4-16 SLOT U	2				
17	85010N	ZERK 1/4-28 STR SLF THD	2				
18	64123-215	BLT-HEX 3/4-10X7-1/2	2				
19	64229-07	NUT-NYLON LOCK 3/4-10	2				
20	64262-011	BLT-FLG HD 3/8-16 X 1	8				
21	64229-03	NUT-NYLON LOCK 3/8-16	8				
22	64018-39	BLT-CRG 3/8-16X1-3/4 FL TH	1				
23	64163-98	WSHR-.515X.875X14GA	1				
24	64141-4	NUT-WLF 3/8-16	1				
25	4165657	LABEL-BOB-CAT	1				
26	4143354	BUMPER-RUBBER	2				
27	64141-6	NUT-WLF 5/16-18	2				

48" SIDE DECK ASSY



FIGURE 12





48" SIDE DECK ASSY

QUICKCAT

FIGURE 12

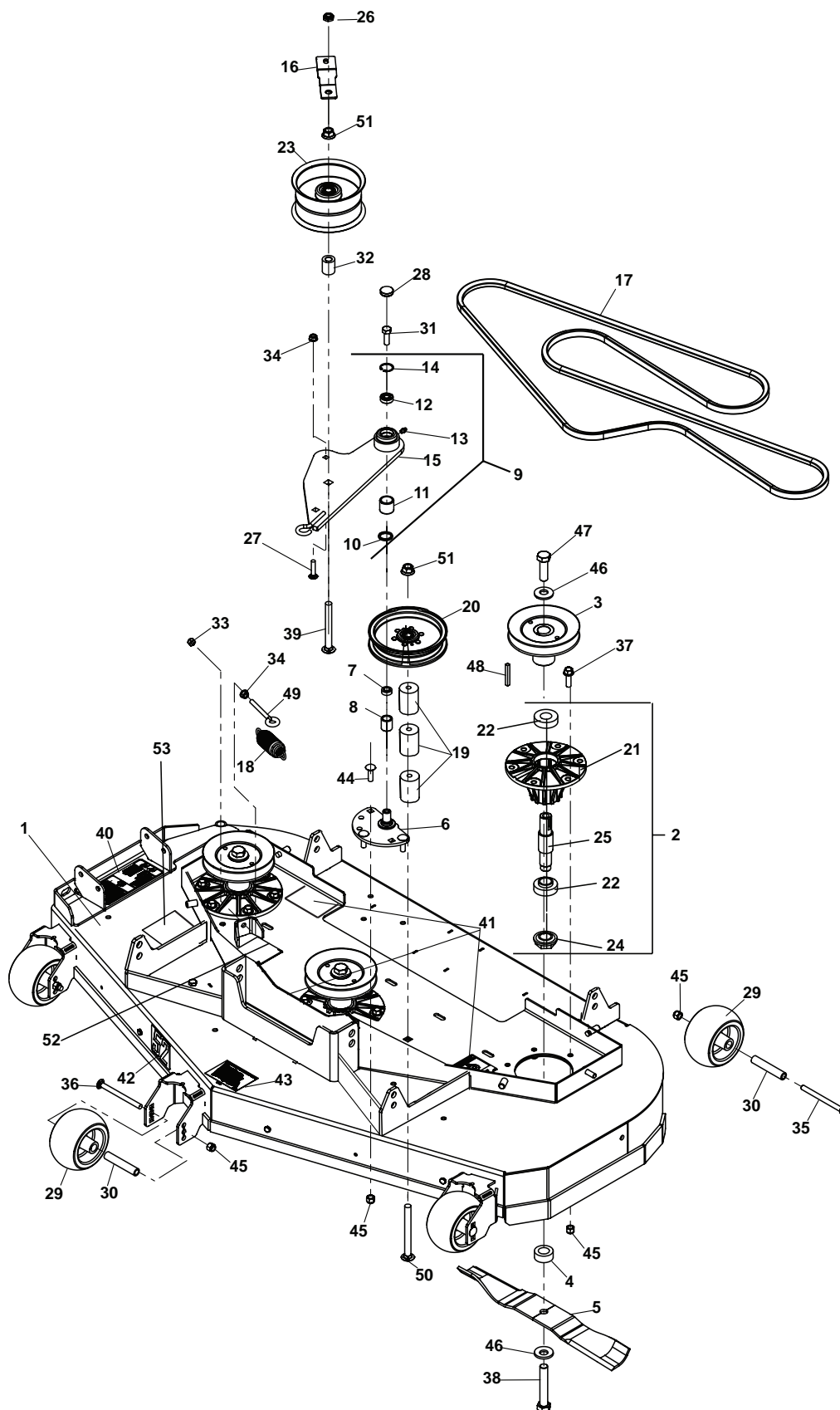
ITEM	PART NO.	DESCRIPTION	QTY	ITEM	PART NO.	DESCRIPTION	QTY
1	4171369	S-48" DECK W/ LABELS	1	36	64018-30	BLT-CRG 3/8-16 X 4-1/2	3
2	4165022	ASSY-CTRDCK SPINDLE INCLUDES ITEMS 21-25	3	37	64262-012	BLT-FLG HD 3/8-16 X 1-1/4	18
				38	64123-187	BLT-HEX 5/8-18X3-3/4	3
3	4170134	PULLEY-SPINDLE,48IN	3	39	64018-33	BLT-CRG 1/2-13 X 4-1/2	1
4	4118314	SPACER-BLADE	3	40	4164269	LABEL-WRNNG THRWN	1
5	112111-01	BLADE 16.25 OFFST HLFT	3	41	2000577	DECAL, "ROTATING PARTS"	3
6	4170021.7	WLDMT-IDLER PIN	1	42	4162914	LABEL-DECK SIZE,48	1
7	4163014	SPACER	1	43	4116761	LABEL-MADE IN USA	1
8	4163155	INNER RING	1	44	64018-7	BLT-CRG 3/8-16X1-1/4	3
9	4171371	S-IDLER ARM (INCLUDES ITEMS 10-15)	1	45	64229-03	NUT-NYLON LOCK 3/8-16	25
10	521438	GREASE SEAL	1	46	64209-03	SPRING WASHER.67 ID	6
11	548138	BRG NDL.88 1.12 1.00 END	1	47	64123-137	BLT-HEX 5/8-18X2	3
12	4128004	BEARING-BALL 10 X 26 X 8	1	48	64164-13	KEY 1/4 X 2 SQ	3
13	85010N	ZERK 1/4-28 STR S-THRD	1	49	64158-08	EYE BOLT 5/16-18 X 2.5	1
14	64144-40	SNAP RING-26MM INTERNAL	1	50	64018-16	BLT CRG 1/2-13 X 5	1
15	4170610.7	WLDMT-IDLER ARM	1	51	64268-05	NUT-FL NYLON LOCK 1/2-13	2
16	4170510.7	WLDMT-IDLER BELT GUIDE	1	52	4170596.7	SHIELD-BELT,48IN	1
17	4171864	BELT-48IN DECK	1	53	64018-15	BLT-CRG 5/16-18X1	2
18	4169716	SPRING-EXTENSION	1	54	64268-02	NUT-FL NYLON LOCK 5/16-18	2
19	4152578-01	SPACER-2.0 X .516 X .938	3	55	4171408	LABEL-SPRING LENGTH	1
20	128169	PULLEY IDLER 5.50	1	56	2000572	LABEL-WARNING BLADES	1
21	4164948	HOUSING-SPINDLE	3				
22	38348-01	BEARING-SPINDLE SEALED	6				
23	4170088	PULLEY-5.25" X 2.5"W	1				
24	38315	NUT-SPINDLE	3				
25	2183070-01	SHAFT-SPINDLE LONG	3				
26	64151-37	NUT-HEX, 1/2-13 INSRT JAM	1				
27	64018-34	BLT-CRG 5/16-18 X 1-1/2	1				
28	4128002	CAP-26 X 7 END	1				
29	2721512	ROLLER-5X2.75 CENTERED	4				
30	2720685	SPACER-ROLLER	4				
31	64270-02	BLT-HEX M10-1.5x30	1				
32	4163802-02	SPACER-1.0 X .516 X 1 3/16	1				
33	64229-02	NUT-NYLON LOCK 5/16-18	1				
34	64141-6	NUT-WLF 5/16-18	2				
35	64123-173	BLT-HEX 3/8-16X4-1/2	1				

*NOT ILLUSTRATED

52" SIDE DECK ASSEMBLY



FIGURE 13





52" SIDE DECK ASSEMBLY

QUICKCAT

FIGURE 13

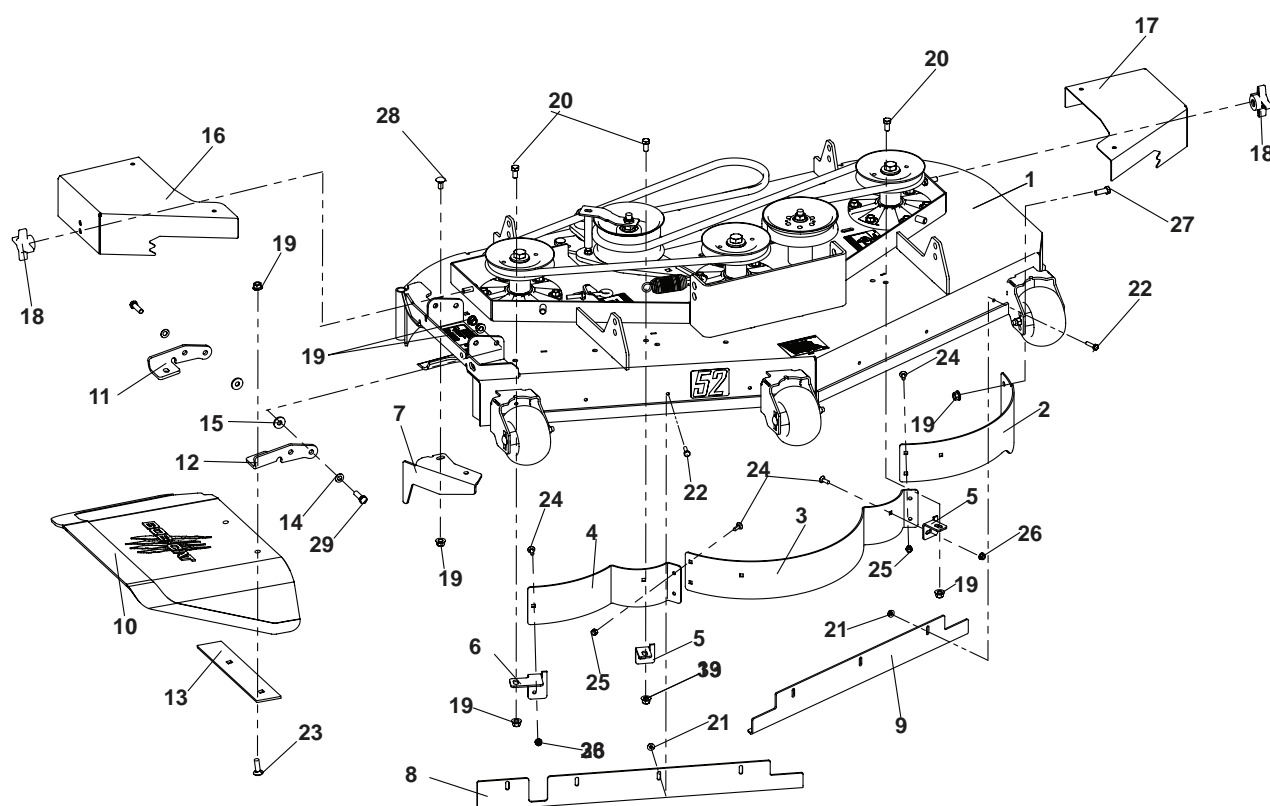
ITEM	PART NO.	DESCRIPTION	QTY	ITEM	PART NO.	DESCRIPTION	QTY
1	4171370	S-52" DECK W/ LABELS	1	37	64262-012	BLT-FLG HD 3/8-16 X 1-1/4	18
2	4165022	ASSY-CUTTERDECK SPINDLE	3	38	64123-187	BLT-HEX 5/8-18X3-3/4	3
		INCLUDES ITEMS 21-25		39	64018-33	BLT-CRG 1/2-13 X 4-1/2	1
3	4170132	PULLEY-SPINDLE 52IN	3	40	4164269	LABEL-WARNING THROWN	1
4	4118314	SPACER-BLADE	3	41	2000577	DECAL, "ROTATING PARTS"	3
5	112111-02	BLADE 18.00 OFFST HLFT	3	42	4162915	LABEL-DECK SIZE, 52	1
6	4170021.7	WLDMT-IDLER PIN	1	43	4116761	LABEL-MADE IN USA	1
7	4163014	SPACER	1	44	64018-7	BLT-CRG 3/8-16X1-1/4	3
8	4163155	INNER RING	1	45	64229-03	NUT-NYLON LOCK 3/8-16	25
9	4171371	S-IDLER ARM ASSY	1	46	64209-03	SPRING WASHER.67 ID	6
		(INCLUDES ITEMS 10-15)		47	64123-137	BLT-HEX 5/8-18X2	3
10	521438	GREASE SEAL	1	48	64164-13	KEY 1/4 X 2 SQ	3
11	548138	BRG NDL.88 1.12 1.00	1	49	64158-08	EYE BOLT 5/16-18 X 2.5	1
12	4128004	BEARING-BALL 10 X 26 X 8	1	50	64018-16	BLT CRG 1/2-13 X 5	1
13	85010N	ZERK 1/4-28 STR	1	51	64268-05	NUT-FL NYLON LOCK 1/2-13	2
14	64144-40	SNAP RING-26MM INTERNAL	1	52	4171408	LABEL-SPRING LENGTH	1
15	4170610.7	WLDMT-IDLER ARM	1	53	2000572	LABEL-WARNING BLADES	1
16	4170510.7	WLDMT-IDLER BELT GUIDE	1	54			
17	4170484	BELT-52IN DECK	1				
18	4169716	SPRING-EXTENSION	1				
19	4152578-01	SPACER-2.0 X .516 X .938	3				
20	128169	PULLEY IDLER 5.50	1				
21	4164948	HOUSING-SPINDLE	3				
22	38348-01	BEARING-SPINDLE SEALED	6				
23	4170088	PULLEY-5.25" X 2.5"W	1				
24	38315	NUT-SPINDLE	3				
25	2183070-01	SHAFT-SPINDLE LONG	3				
26	64151-37	NUT-HEX, 1/2-13 NYLON JAM	1				
27	64018-34	BLT-CRG 5/16-18 X 1-1/2	1				
28	4128002	CAP-26 X 7 END	1				
29	2721512	ROLLER-5X2.75 CENTERED	4				
30	2720685	SPACER-ROLLER	4				
31	64270-02	BLT-HEX M10-1.5x30 ISO	1				
32	4163802-02	SPACER-1.0 X .516 X 1 3/16	1				
33	64229-02	NUT-NYLON LOCK 5/16-18	1				
34	64141-6	NUT-WLF 5/16-18	2				
35	64123-173	BLT-HEX 3/8-16X4-1/2	1				
36	64018-30	BLT-CRG 3/8-16 X 4-1/2	3				

*NOT ILLUSTRATED

CHUTE, BAFFLES & EDGES ASSY



FIGURE 14





CHUTE, BAFFLES & EDGES ASSY

QUICKCAT

FIGURE 14

ITEM	PART NO.	DESCRIPTION	QTY	ITEM	PART NO.	DESCRIPTION	QTY
1	4171369	S-48" DECK W/ LABELS	1	23	64018-7	BLT-CRG 3/8-16X1-1/4	2
	4171370	S-52" DECK W/ LABELS	1	24	64018-2	BLT-CRG 1/4-20X3/4	7
2	4165965.7	BAFFLE-FRONT, LH 52IN	1	25	64229-01	NUT-NYLON LOCK 1/4-20	4
	4165971.7	BAFFLE-FRONT, LH 48IN	1	26	64268-01	NUT-FL NYLON LOCK 1/4-20	3
3	4165966.7	BAFFLE-FRONT, CNTR 52IN	1	27	64123-50	BLT-HEX 3/8-16X1	1
	4165972.7	BAFFLE-FRONT, CNTR 48IN	1	28	64018-23	BLT-CRG 3/8-16X3/4	2
4	4168516.7	BAFFLE-FRONT, RH 52IN	1	29	64123-16	BLT-HEX 3/8-16X1-1/4	2
	4168527.7	BAFFLE-FRONT, RH 48IN	1				
5	4168514.2	BRKT-BAFFLE MNTG QTY 2 USED ON 52" QTY 3 USED ON 48"	2				
6	4168515.2	BRKT-BAFFLE MNTG, RH	1				
7	4165976.7	BAFFLE-DISCHARGE 48"	1				
	4168085.2	BAFFLE-DISCHARGE 52"	1				
8	4166478.2	EXTENSION-52IN RH	1				
	4166929.2	EXTENSION-48IN RH	1				
9	4166479.2	EXTENSION-52IN LH	1				
	4166930.2	EXTENSION-48IN LH	1				
10	4168131	CHUTE-DISCHARGE	1				
11	4169849.7	BRKT-CHUTE, REAR	1				
12	4169850.7	BRKT-CHUTE, FRONT	1				
13	4169851.7	PLATE-CHUTE	1				
14	4169871	WASHER-BELLVILLE, .382 ID	2				
15	4169895	WASHER-FRICTION, UHMW	2				
16	4170651.7	COVER-BELT,RH	1				
17	4170652.7	COVER-BELT,LH	1				
18	38524	KNOB-4 PRONG 3/8-16	2				
19	64268-03	NUT-FL NYLON LOCK 3/8-16	10				
20	64123-15	BLT-HEX 3/8-16X3/4	3				
21	64141-2	NUT-WLF 1/4-20	7				
22	64123-114	BLT-HEX 1/4-20 X 1	7				

SCHILLER GROUNDS CARE, INC.
ONE BOB-CAT LANE
P.O. BOX 469
JOHNSON CREEK, WI 53038
920-699-2000
www.schillergc.com



©Schiller Grounds Care, Inc. 2010