

Installation Instructions for Schiller Grounds Care, Steiner 440 Exterior Mirrors

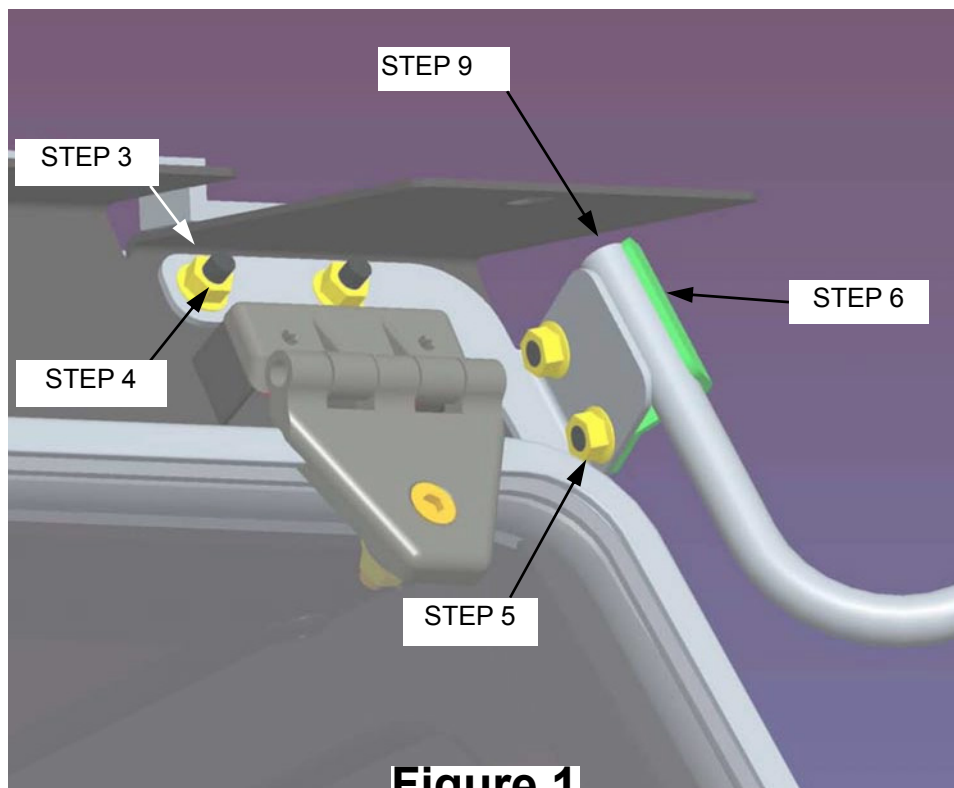
Before you begin, read these instructions and check to be sure all parts and tools are accounted for. Please retain these instructions for future reference and parts ordering information (Figure 2).

Installation Tools: Standard socket set and Torx wrench set.

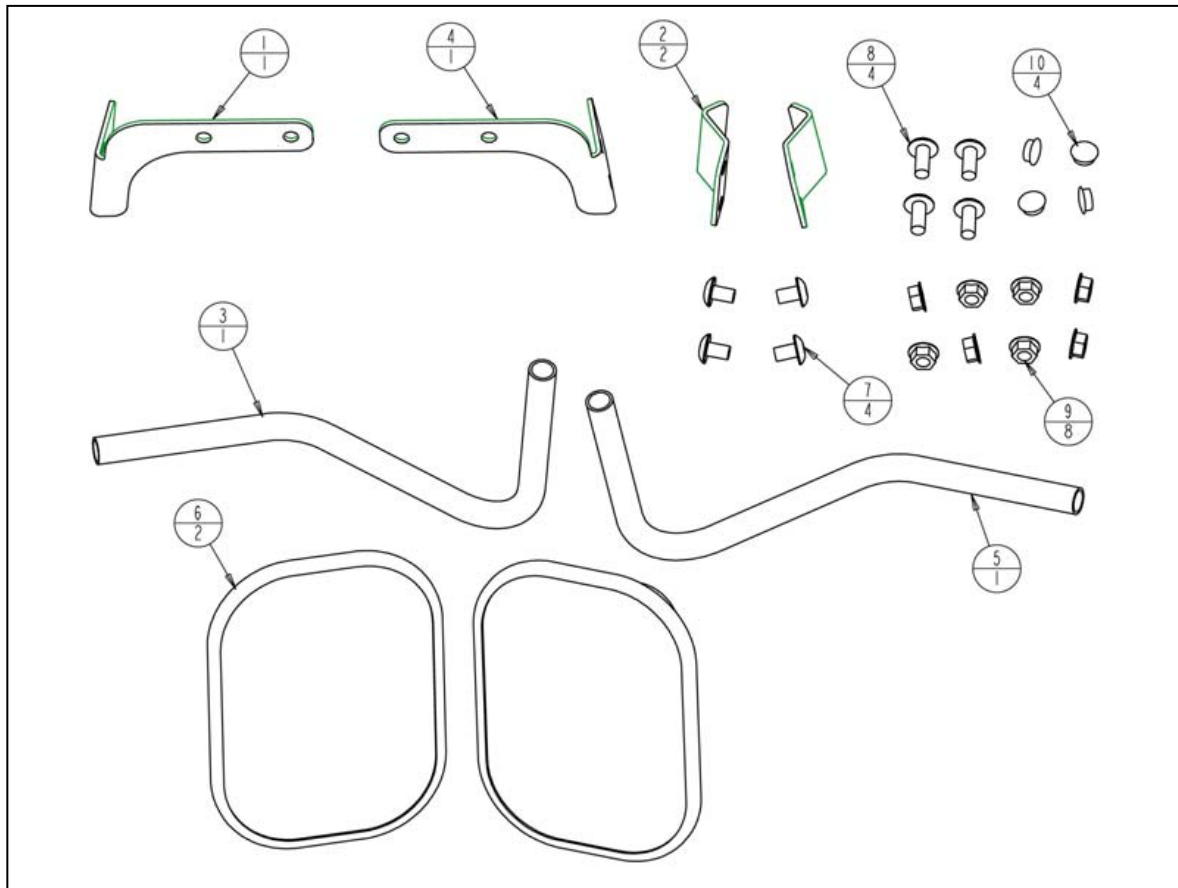
IMPORTANT: Perform all steps correctly and completely.

Exterior Mirrors Installation (Refer to Figures 1 and 2):

1. Remove front roof bolts. Lift front of roof and block up approximately 3.0".
2. Remove (4) 3/8" hole plugs on the front upper cab cross member.
3. Place LH mirror mount bracket (Item 1) onto front upper cab cross member surface.
4. Secure LH mount bracket using 5/16" x 3/4" screws (Item 8) and 5/16" flange nuts (Item 9).
5. Secure clamp bracket to LH mount bracket using 5/16" x 1/2" screws (Item 7) and 5/16" flange nut (Item 9).
6. Insert LH mirror arm (Item 5) into LH mount bracket (Item 1) and clamp bracket (Item 2) and tighten hardware.
7. Mount mirror head (Item 6) onto LH mirror arm (Item 5) and tighten.
8. Repeat steps 3-7 for Right Hand side using RH components.
9. Insert 1/2" hole plugs into the ends of each mirror arm.
10. Adjust mirrors and check for door clearance. Re-secure front of roof.



4171658 REV A



ITEM	PART NO.	DESCRIPTION	QTY
1	4171657-01	MIRROR MOUNT BRACKET, LH	1
2	4171657-02	MIRROR CLAMP	2
3	4171657-03	MIRROR ARM, LH	1
4	4171657-04	MIRROR MOUNT BRACKET, RH	1
5	4171657-05	MIRROR ARM, RH	1
6	4171657-06	MIRROR HEAD	2
7	4171015-46	SCREW, 5/16 X .50	4
8	4171015-47	SCREW, 5/16 X .75	4
9	64141-6	NUT, 5/16 SERATED FLANGE	8
10	4171657-07	PLUG, HOLE, 1/2	4
11	4171658	MOUNTING INSTRUCTIONS	1