

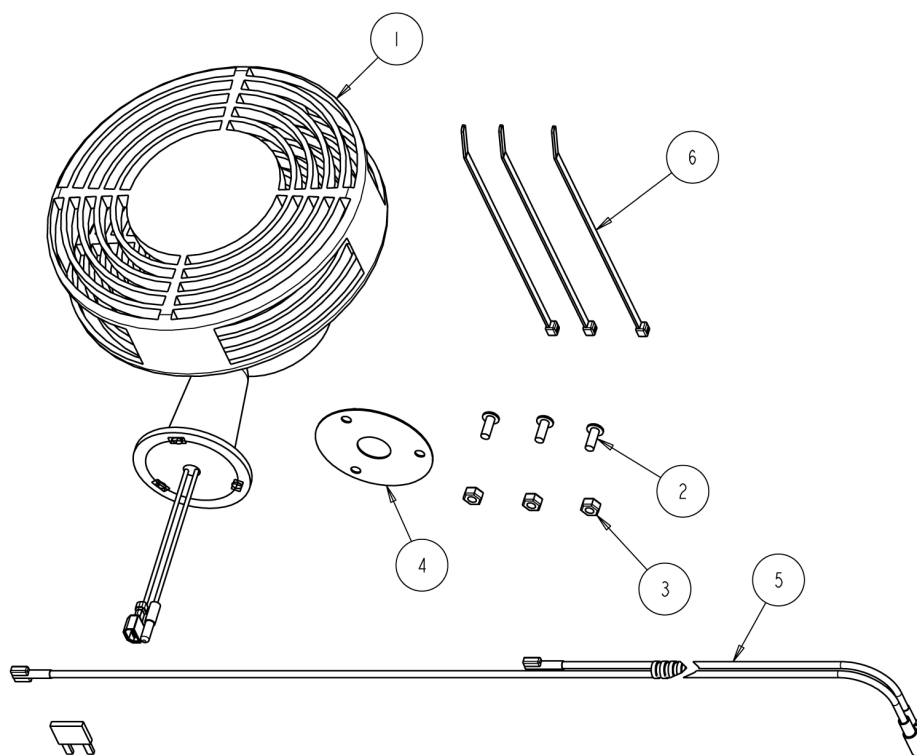
Installation Instructions for Schiller Grounds Care, Steiner 440 Fan Kit

Note: This kit requires a minimum current draw of 3.3 amps at 12 VDC. Do not exceed the machine's available alternator capacity. If you do not know how much current is available, contact your dealer or manufacturer of this machine, prior to installing this kit.

This kit is for use in cabs that have a factory installed overhead switch panel. The cab and overhead switch console are supplied with a main feed breaker/relay wire harness and 6-slot fuse block with ground terminals.

Before you begin, read these instructions and identify all components (**Figure 1**). Please retain these instructions for future reference and parts ordering information.

IMPORTANT: Perform all steps correctly and completely.



ITEM	PART NO.	DESCRIPTION	QTY
1	75-71224	FAN ASSEMBLY W/ SWITCH	1
2	64152-06	BLT-NO. 10 X 1/2	3
3	64229-10	NUT-NY LCK NO.10	3
4	N/A	GASKET-FAN	1
5	4171659-01	HARNESS-WIRE, FAN	1
6	O/L	TIE-NYLON, ZIP	3

O/L= OBTAIN LOCALLY

Fan Kit Installation:

1. Make sure machine's ignition key is turned off. Remove key.
2. Remove overhead switch panel bolts and allow panel to tip down.
3. Remove three 1/4" hole plugs and one 1" hole plug from switch panel (**Figure 2**).
4. Route fan wires through fan gasket and through center hole in switch panel (**Figure 2**).
5. Secure fan (**Item 1**) with fan gasket (**Item 4**) to switch panel using three No. 10 x 1/2" long bolts (**Item 2**) and three No.10 nylock nuts (**Item 3**) (**Figure 2**).
6. Connect fan end of wire harness 3-19673 (**Item 5**) to fan wires.
7. Route opposite end of wire harness to fuse block location (**Figure 3**).
8. Remove fuse block access cover from switch panel (**Figure 2**).
9. Connect red wire of wire harness to an empty fuse block terminal.
10. Connect black wire of wire harness to fuse block (-12VDC) grounding terminal.
11. Install 5 amp fuse into fuse block location selected in Step 9.
12. Turn tractor's ignition key "ON" and check fan operation by turning the switch located on the fan, on and off. Fan should also turn off when tractor's ignition key is turned off.
13. Secure wire harness using nylon ties (**Item 6**).
14. Re-install switch panel to cab. Secure fuse access cover panel to switch panel.

