

### Installation Instructions for Schiller Grounds Care, Steiner 440 Interior Mirror

Before you begin, read these instructions and check to be sure all parts and tools are accounted for. Please retain these instructions for future reference and parts ordering information (Figure 1).

**Installation Tools:** Standard wrench set and Philips screwdriver.

**IMPORTANT:** Perform all steps correctly and completely.

#### Interior Mirror Installation (See Figure 1):

1. Remove mirror assembly from box and loosen Philips screws, enough so that the mount arm can move with some tension. Tighten screws if arm becomes too loose.
2. Remove the bolts that secure the overhead switch panel and allow panel to tip down.
3. Remove one 3/8" hole plug located on the right side of overhead switch panel.
4. Secure mirror (1) to overhead switch panel using (2) 8mm flange nuts (one on each side of panel).
5. Re-secure switch panel to cab.

ITEM	PART NO.	DESCRIPTION	QTY
1	75-71226	MIRROR MOUNT BRACKET, LH	1
2	O/L	NUT-FLG, 8MM	2

O/L= OBTAIN LOCALLY

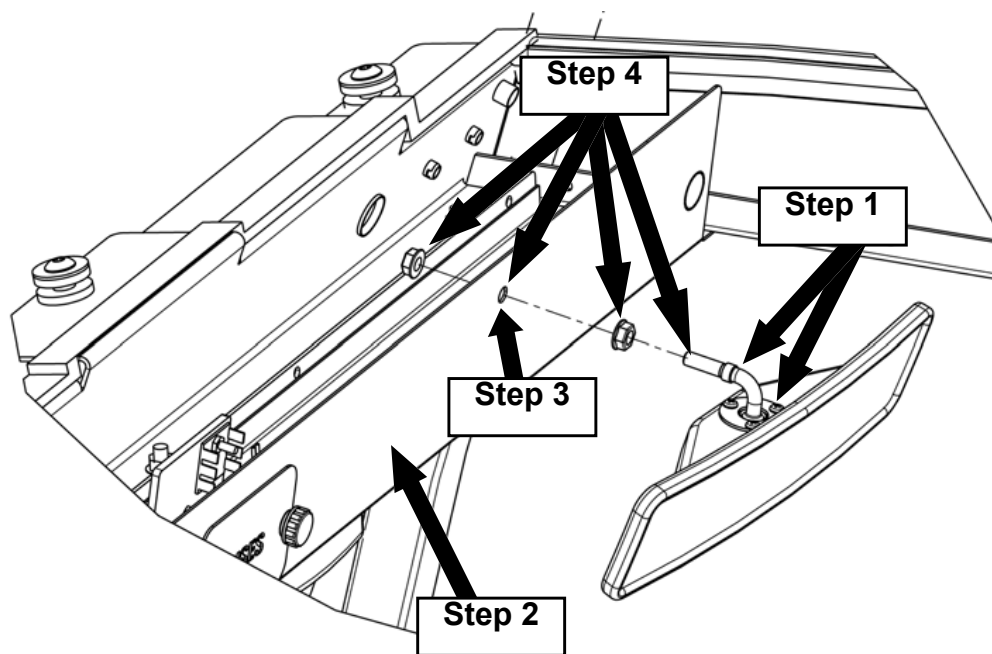


Figure 1 (Shown with roof removed.)