

**MAN 4171736**

**Rev. A 01-2015**

**Original Language Instructions**

Operators's Manual 4171820



**942311EU**  
**EU-FASTCAT RZ FR600V KAW W/42 SIDE DISCHARGE**

**942317EU**  
**EU-FASTCAT RZ FR600V KAW W/36 SIDE DISCHARGE**



# PARTS MANUAL



**CALIFORNIA**

**Proposition 65 Warning**

Diesel engine exhaust and some of its constituents are known to the State of California to cause cancer, birth defects and other reproductive harm.

**⚠ WARNING**

The engine exhaust from this product contains chemicals known to the State of California to cause cancer, birth defects or other reproductive harm.

**Californie Proposition 65 Avertissement**

Les échappements des moteurs diesel et certains de leurs composants sont reconnus par l'Etat de Californie pour être cancérogènes, provoquer des défauts congénitaux et d'autres dangers en matière de reproduction.

**California Advertencia  
de la Proposición 65**

**⚠ AVERTISSEMENT**

L'émission du moteur de ce matériel contient des produits chimiques que l'Etat de Californie considère être cancérogènes, provoquer des défauts congénitaux et d'autres dangers en matière de reproduction.

El estado de California hace saber que los gases de escape de los motores diesel y algunos de sus componentes producen cáncer, defectos de nacimiento y otros daños en el proceso de reproducción humana.

**⚠ ADVERTENCIA**

El estado de California hace saber que los gases de escape de este producto contienen productos químicos que producen cáncer, defectos de nacimiento y otros daños en el proceso de reproducción humana.

**CALIFORNIA**

**Proposition 65 Warning**

Battery posts, terminals, wiring insulation, and related accessories contain lead and lead compounds, chemicals known to the State of California to cause cancer and birth defects or other reproductive harm.  
**WASH HANDS AFTER HANDLING.**





# FastCat RZ

## IMPORTANT MESSAGE

Thank you for purchasing this Schiller Grounds Care, Inc. product. You have purchased a world class mowing product, one of the best designed and built anywhere.

This machine comes with an Operation and Safety Manual. The useful life and good service you receive from this machine depends to a large extent on how well you read and understand this manual. Treat your machine properly, lubricate and adjust it as instructed, and it will give you many years of reliable service.

Your safe use of this Schiller Grounds Care, Inc. product is one of our prime design objectives. Many safety features are built in, but we also rely on your good sense and care to achieve accident-free operation. For best protection, study the manual thoroughly. Learn the proper operation of all controls. Observe all safety precautions. Follow all instructions and warnings. Do not remove or defeat any safety features. Make sure those who operate this machine are as well informed and careful in its use as you are.

See a Schiller Grounds Care, Inc. dealer for any service or parts needed. Schiller Grounds Care, Inc. service ensures that you continue to receive the best results possible from Schiller Grounds Care, Inc. products. You can trust Schiller Grounds Care, Inc. replacement parts because they are manufactured with the same high precision and quality as the original parts.

Schiller Grounds Care, Inc. designs and builds its equipment to serve many years in a safe and productive manner. For longest life, use this machine only as directed in the manuals, keep it in good repair and follow safety warnings and instructions. You'll always be glad you did.

**Schiller Grounds Care, Inc.**  
**One Bob Cat Lane**  
**Johnson Creek, WI 53038-0469**

<b>TABLE OF CONTENTS</b>	<b>PAGE</b>
SAFETY.....	2-7
SET UP INSTRUCTIONS.....	8, 9
MAINTENANCE CHART .....	10
MAINTENANCE RECORD .....	11
MAINTENANCE .....	12-18
ADJUSTMENTS .....	19-21
BELT REPLACEMENT.....	22
PARTS SECTION.....	23
FRAME-ENGINE/CLUTCH ASSY .....	FIGURE 1 24, 25
TRANSAXLE ASSY.....	FIGURE 2 26, 27
FUEL TANK/BUMPER & CONTROL PANEL.....	FIGURE 3 28, 29
FUEL VALVE & COVER PLATE .....	FIGURE 4 30, 31
DECK LIFT ASSEMBLY .....	FIGURE 5 32, 33
CASTER ASSEMBLY .....	FIGURE 6 34, 35
KICKPLATE/SEAT ASSEMBLY .....	FIGURE 7 36, 37
STEERING .....	FIGURE 8 38, 39
PARKING BRAKE .....	FIGURE 9 40, 41
WIRE HARNESS.....	FIGURE 10 42, 43
36" SIDE DISCHARGE .....	FIGURE 11 44, 45
42" SIDE DISCHARGE .....	FIGURE 12 46, 47
BAFFLES, CHUTE & EDGES .....	FIGURE 13 48, 49
DECALS-POWERUNIT .....	FIGURE 14 50, 51
ACCESSORIES-SUSPENSION SEAT.....	FIGURE 15 52, 53



### NOTICE !!!

Unauthorized modifications may present **extreme** safety hazards to operators and bystanders and could also result in product damage.

Schiller Grounds Care, Inc. strongly warns against, rejects and disclaims any modifications, add-on accessories or product alterations that are not designed, developed, tested and approved by Schiller Grounds Care, Inc. Engineering Department. Any Schiller Grounds Care, Inc. product that is altered, modified or changed in any manner not specifically authorized after original manufacture—including the addition of “aftermarket” accessories or component parts not specifically approved by Schiller Grounds Care, Inc. will result in the Schiller Grounds Care, Inc. Warranty being voided.

Any and all liability for personal injury and/or property damage caused by any unauthorized modifications, add-on accessories or products not approved by Schiller Grounds Care, Inc. will be considered the responsibility of the individual(s) or company designing and/or making such changes. Schiller Grounds Care, Inc. will vigorously pursue full indemnification and costs from any party responsible for such unauthorized post-manufacture modifications and/or accessories should personal injury and/or property damage result.



This symbol means:  
**ATTENTION!**  
**BECOME ALERT!**

Your safety and the safety of others is involved.

### Signal word definitions:

The signal words below are used to identify levels of hazard seriousness. These words appear in this manual and on the safety labels attached to Schiller Grounds Care, Inc. machines. For your safety and the safety of others, read and follow the information given with these signal words and/or the symbol shown above.

#### **DANGER**

**DANGER** indicates an imminently hazardous situation which, if not avoided, **WILL** result in death or serious injury.

#### **WARNING**

**WARNING** indicates a potentially hazardous situation which, if not avoided, **COULD** result in death or serious injury.

#### **CAUTION**

**CAUTION** indicates a potentially hazardous situation which, if not avoided, **MAY** result in minor or moderate injury. It may also be used to alert against unsafe practices or property damage.

#### **CAUTION**

**CAUTION** used without the safety alert symbol indicates a potentially hazardous situation which, if not avoided, **MAY** result in property damage

 **SCHILLER** GROUNDS CARE  
ONE BOB-CAT LANE  
JOHNSON CREEK, WI 53038 U.S.A.

2009 xxxKG xx.xKW  
MODEL DESCRIPTION  
MODEL NUMBER



SERIAL NUMBER

**MODEL NUMBER:** This number appears on sales literature, technical manuals and price lists.

**SERIAL NUMBER:** This number appears only on your unit. It contains the model number followed consecutively by the serial number. Use this number when ordering parts or seeking warranty information.

\* Serial Plate located on left side panel near cut-off switch.



## FastCat RZ

### PREPARING FOR OPERATION SAFETY

#### Operator preparation and training

##### Read the Operation & Safety Manual

- If an operator or mechanic cannot read English, it is the owner's responsibility to explain this material to them. If any portion of this material is unclear, contact your factory representative for clarification.
- Become familiar with the safe operation of the equipment, operator controls and safety signs. Know how to stop the engine and attachments quickly in an emergency. Do not operate or allow another person to operate this machine if there are any questions about safety.
- All operators and mechanics should be trained. The owner is responsible for training the users.
- Wear appropriate clothing, including long trousers and safety goggles or safety glasses with side shields when operating mower. Do not operate barefoot or wearing open sandals. Long hair, loose clothing or jewelry may get tangled in moving parts.
- Wear hearing protection.
- Never allow underage children, unskilled or improperly trained people operate this equipment. Local regulations can restrict the age of the operator.
- Data indicates that those operators age 60 years and above are involved in a large percentage of riding mower-related injuries. Those operators should evaluate their ability to operate the riding mower safely enough to protect themselves and others from injury.
- Do not carry passengers, especially small children. They may fall off and be seriously injured.
- Keep warning labels and this operator's manual legible and intact. Replacement labels and manuals are available from the factory.
- Do not operate machine while under the influence of drugs or alcohol.
- The owner/user can prevent and is responsible for accidents or injuries occurring to themselves, other people or property.



#### Site preparation and circumstances

- Evaluate the terrain to determine what accessories and attachments are needed to properly and safely perform the job. Only use accessories and attachments approved by the manufacturer.
- Clear the area to be mowed of objects such as rocks, toys, wire or other debris that may be picked up or thrown by the mower.
- Be sure the area is clear of pets and people, especially young children. Never assume they will remain where you last saw them. Stop the machine if any enter the area.
- Mow only in daylight or in good artificial light.
- Do not mow wet grass as tires may lose traction.



## Machine preparation

- Check operator presence interlock system and brake operation. Adjust or repair any problems before using.
- Do not tamper with or defeat safety devices. Keep guards, shields and interlock safety devices in place and in proper working condition. They are for your protection.
- Keep all fasteners such as nuts, bolts and pins well secured.
- Visually inspect blades, blade bolts and the cutter assembly for wear or damage. Replace worn or damaged blades and bolts to preserve balance.
- Verify that machine and attachments, if any, are in good operating condition.
- Do not engage blades until ready to mow.

## OPERATING SAFELY

### In general

- Use extra care when loading or unloading the machine into a trailer or truck.
- Slow down and use caution when making turns and crossing roads and sidewalks. Stop blades if not mowing.
- Do not run the engine in an enclosed area where dangerous carbon monoxide fumes can collect.
- Do not place your foot on the ground while operating the machine.
- Before operating, lower the discharge chute, install the mulcher or put the entire grass catcher in place.
- Keep clear of the discharge opening at all times. Never direct the discharge toward a bystander. Stop operation if someone approaches.
- Keep washout ports and other mower housing service openings closed when mowing.
- Use care when pulling loads or using heavy equipment.
  - Use only approved drawbar hitch points.
  - Limit loads to those you can safely control.
  - Do not turn sharply. Use care when reversing.
  - Use counterweight(s) or wheel weights when suggested in the operator's manual.
- Never leave a machine unattended. Always turn off blades, set parking brake, stop engine and remove key before dismounting.

## Starting

- Start only according to instructions in this manual or on the machine.
- Before attempting to start the engine, make sure:
  - the parking brake is on;
  - the PTO is disengaged;
  - the traction drive is in NEUTRAL.
- When starting the engine, make sure hands and feet are clear of the blades.
- Do not start the machine while standing in front of the discharge chute or with the chute directed at someone.
- Do not engage PTO at full throttle. Throttle to idle or lowest possible engine speed.
- Do not change engine governor settings or overspeed the engine. Operating the engine at excessive speed can increase the hazard of personal injury.

## MANUEVERING SAFELY

### In general

- Slow down before turning.
- Do not mow in reverse unless absolutely necessary. Always look behind and down for small children and pets before and during backing.
- Be aware when approaching blind corners, shrubs, trees, tall grass or other objects that may obscure vision.
- If tires lose traction, disengage the blades. If on a slope, head downhill.



## FastCat RZ

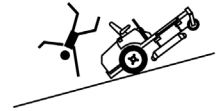
### Interrupting operation

- Before leaving the operator's position:
  - Park on level ground.
  - Disengage the PTO.
  - Set the parking brake.
  - Shut off the engine and remove the key.
- Disengage the PTO and wait until the blades quit rotating:
  - before raising cutterdeck;
  - when not mowing;
  - for transport;
  - when crossing surfaces other than grass.
- Stop the engine, disengage the PTO, set parking brake and wait until the blades quit rotating and lower cutting unit:
  - before refueling;
  - before removing grass catcher;
  - before making height adjustment unless the adjustment can be made from the operator's position.
- Stop the engine, disengage the PTO, set parking brake and disconnect the spark plug wire(s) or remove the key:
  - before clearing blockages or unclogging chute;
  - before checking, cleaning or working on the machine;
  - after striking a foreign object. Inspect the machine for damage and make repairs before restarting;
  - if the machine begins to vibrate abnormally: shut off machine immediately. Inspect and make repairs as needed before restarting;
  - except for repairs or adjustments as specifically noted, such as for carburetor adjustment, where the engine must be running. Keep hands and feet clear of moving parts in these circumstances.
- Allow the blades to come to a complete stop when stopping operation to clear blockages, unclog, inspect the machine, do maintenance or repair.
- Reduce the throttle setting during engine shut-down and, if the engine is provided with a shut-off valve, turn the fuel off at the conclusion of mowing.

### Mowing slopes

#### WARNING

Slopes are a major factor in loss-of-control and tip over accidents that sometimes lead to severe injury or death. All slopes require extra caution.



- Do not mow on slopes if uneasy or uncertain. Ultimate responsibility for safe operation on slopes rests with the operator.
- Do not mow excessively steep slopes.
- On zero turn machines, mow across slopes, not up and down.
- Avoid starting or stopping on a slope. If tires lose traction, disengage the blades and proceed slowly straight down the slope.
- With a zero turn machine, if tires lose traction going down a slope, steering control may be regained by speeding up.
- Mid-mount zero turns (belly mounted deck) have much greater traction pointed up slope than down slope. Be aware that traction may be lost going down a slope. Do not operate a mid-mount zero turn on slopes it cannot back up.
- Keep all movement on the slopes slow and gradual. Do not make sudden changes in speed or direction.
- Do not turn on slopes unless necessary, and then turn slowly and downhill when possible.
- Stay away from slopes if the ground is loose or if caught in the rain during mowing.
- Use lower speeds on a slope to avoid stopping or shifting.
- Use extra care with grass catchers or other attachments. These can change the stability of the machine.
- Remove obstacles such as rocks, tree limbs etc.
- Avoid driving over obstacles such as ruts, holes, rocks and roots whenever possible. Be alert to dips and rises. Uneven terrain can overturn a mower or cause it to slide. Tall grasses can hide obstacles.
- Do not mow dropoffs, ditches or embankments. The machine could suddenly turn over if a wheel runs over the edge or an edge caves in.
- Follow the manufacturer's recommendations for wheel weights or counterweights to improve stability.
- Do not mow slopes when grass is wet. Reduced traction could cause sliding.



## MAINTENANCE SAFELY

### In general

- Maintain machine according to manufacturer's schedule and instructions for maximum safety and best mowing results.
- Park machine on level ground.
- Never allow untrained personnel to service machine.
- Adjust or repair only after the engine has been stopped and the blades have quit rotating.
- Inspect grass catcher components regularly. If worn, damaged or deteriorated, they may expose moving parts or allow objects to be thrown.
- Replace parts if worn, damaged or faulty. For best results, always replace with parts recommended by the manufacturer.
- Disconnect battery or remove spark plug wire(s) before making any repairs. Disconnect the negative terminal first and the positive last. Reconnect positive first and negative last.
- Do not dismantle the machine without releasing or restraining forces which may cause parts to move suddenly.
- Provide adequate support, e.g. jackstands for lifted machine or parts if working beneath.
- Do not put hands or feet near or under rotating parts.
- Clean up spilled oil or fuel thoroughly.
- Replace faulty mufflers.
- To reduce fire hazards, keep the engine, muffler, battery compartment and fuel storage area free of grass, leaves, debris buildup or grease.
- Hydraulic fluid can penetrate skin, use paper to check for leaks. Relieve hydraulic pressure before disconnecting hoses. Make sure connections are tight and hoses are in good condition.

### Blades

- Mower blades are sharp and can cut. Use extra caution when handling. Remove obstructions with care. Wrap the blade(s) or wear gloves.
- Be aware that rotating one blade on multiblade mowers can cause other blades to rotate.
- Only replace blades. Never straighten or weld them.
- Keep other persons away from blades.



### Fuel

- Gasoline and diesel fuels are flammable; gasoline vapors are explosive. Use extra care when handling.
- Store only in containers specifically designed for fuel.
- When refueling or checking fuel level:
  - Stop the engine and allow to cool;
  - Do not smoke;
  - Refuel outdoors only;
  - Use a funnel;
  - Do not overfill;
  - If fuel is spilled, do not attempt to start the engine until the spill is cleaned up and vapors have cleared.



Sparks from static electricity can start fires or cause explosions. Flowing fuel can generate static electricity. To prevent static electricity sparks:

- Keep containers electrically grounded. Do not fill containers in a vehicle or on a truck or trailer bed with a plastic liner. Fill containers on the ground away from the vehicle.
- When practical, remove gas powered equipment from the truck or trailer and refuel it on the ground. If equipment must be refueled on the truck or trailer, refuel from a portable container rather than a dispenser nozzle.
- Keep the dispenser nozzle in contact with the rim of the fuel tank or container opening until fueling is complete. Do not use a nozzle lock-open device.
- Replace caps on fuel cans and tanks securely.



## FastCat RZ

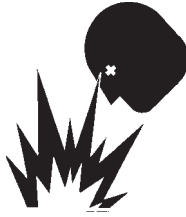
### Battery

Battery acid is caustic and fumes are explosive and can cause serious injury or death.

To reduce the risk of personal injury when working near a battery:

- When working with battery acid, use protective equipment such as, but not limited to, goggles, face shield, rubber gloves and apron.
- Avoid leaning over a battery.
- Do not expose a battery to open flames or sparks.
- Be sure batteries with filler caps are properly filled with fluid.
- Do not allow battery acid to contact eyes or skin. Flush any contacted area with water immediately and get medical help.
- Charge batteries in an open, well ventilated area, away from sparks and flames. Unplug charger before connecting or disconnecting from battery.

### WARNING



### STORAGE SAFETY

- Stop the engine and allow to cool before storing.
- Drain the fuel tank outdoors only.
- Store fuel in an approved container in a cool, dry place.
- Keep the machine and fuel containers in a locked storage place to prevent tampering and to keep children from playing with them.
- When the machine is to be parked, stored or left unattended, lower the cutterdeck unless a positive mechanical lock is used.
- Do not store the machine or fuel container near heating appliances with an open flame such as a water heater or an appliance with a pilot light.
- Keep gasoline storage area free of grass, leaves and excessive grease to reduce fire hazard.
- Clean grass and debris from cutting units, drives, mufflers and engine to help prevent fires.

### JUMP STARTING

1. Be sure the jumper cables are in good condition. Turn off the ignition and all electrical accessories on both machines.
2. Position the machine with a good (charged) battery next to but not touching the machine with the dead battery so jumper cables will reach.
3. When making cable connections:
  - make sure the clamps do not touch anywhere except to intended metal parts,
  - Never connect a positive ("+" or red) terminal to a negative ("-" or black) terminal.
  - Make sure the cables won't get caught in any parts after the engines are started.
4. Connect one end of the first jumper cable to the **positive** terminal on one battery. Connect the other end to the **positive** terminal on the other battery.
5. Connect one end of the other cable to the **negative** terminal of the machine with a good (charged) battery. Make the final connection on the engine of the machine to be started, away from the battery.
6. Start the vehicle with the good battery, then the machine with the discharged battery.
7. Remove the cables in the exact reverse order of installation. When removing each clamp, take care it does not touch any other metal parts while the other end remains attached.



# SET UP INSTRUCTIONS



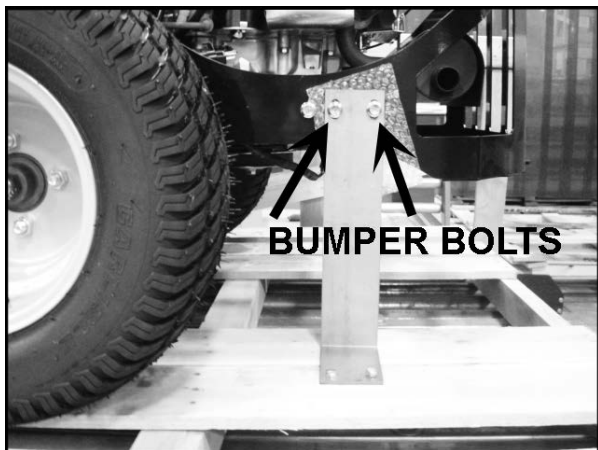
## TOOLS REQUIRED FOR ASSEMBLY

- Wrecking bar
- Claw hammer
- Sockets: 1/2", 15/16
- Wrenches: 18mm, 1/2", 9/16", 3/4", 15/16"
- Tire pressure gauge

**NOTE:** All references below to the "right" or "left" are with respect to an operator at the controls.

### 1. UNCRATE UNIT

- Discard packing materials. Loosen the caster wheel axle bolts and bumper bolts to remove the shipping brackets.  
Discard shipping brackets.
- Re-install and tighten bumper bolts.
- Tighten caster wheel axle bolts against caster axle spanner bushings to 80 ft/lbs. (108 N-M)

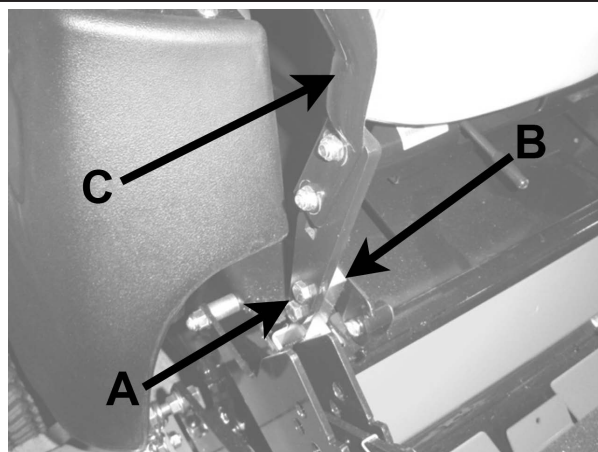


### 2. TIRE PRESSURE

- Set tire pressures to 12 lbs/in<sup>2</sup> (0.8 kg/cm<sup>2</sup>). Front tires should be kept inflated to 15 lbs/in<sup>2</sup> (1.05 kg/cm<sup>2</sup>). Tires are overinflated for shipping.

### 3. TRACTION LEVERS

- Tighten bolt **A**.
- Sit on the machine. Levers **C** may be moved to upper set of holes in bar **B** for a better operator fit.





#### 4. FINAL PREPARATIONS

- Check the engine and hydraulic oil levels. Top off with the correct oil if necessary. Use 10W30 motor oil for the engine. Use fresh, clean 20W50 motor oil for the hydraulic system. After 1 hour of operation, check hydraulic system oil levels when cold.
- Insure Battery cables are connected properly.

#### **⚠ WARNING**

Battery acid is caustic. Fumes are explosive and can cause serious injury or death.

Use insulated tools, wear protective glasses or goggles and protective clothing when working with batteries. Read and obey the battery manufacturer's instructions.

Be certain the ignition switch is OFF and the key has been removed before servicing the battery.

- a) Verify battery polarity before connecting or disconnecting the battery cables.
  - b) When installing the battery, always assemble the RED, positive ( + ) battery cable first and the ground, BLACK, negative ( - ) cable last.
  - c) Tighten cables securely to battery terminals and apply a light coat of silicone dielectric grease to terminals and cable ends to prevent corrosion. Keep terminal covers in place.
- Insure all battery cables are routed correctly, to avoid any rotating or moving component to prevent any cable damage.
  - Read Operation and Safety Manual before starting. Operator Manual is located under the footplate. Tilt foot plate forward to access manual.



**OPERATOR'S MANUAL IS LOCATED  
UNDER THE FOOT PLATE.**

- Deck can be adjusted to allow for best horsepower, best quality of cut, or best striping. See deck leveling procedure in the Adjustments Section in this manual to set as desired.
- Run engine at full RPM for 5 minutes before engaging blades to allow the engine to be fully lubricated before load is applied.
- Check the hydrostat neutral adjustment. Neutral is set at the factory but may require readjustment. See adjustments section in the this manual.
- Do not use the machine without an approved grass collector, the grass discharge chute or mulching plates correctly fitted.



# MAINTENANCE CHART



MAINTENANCE OPERATION	Maintenance is an ongoing job. These intervals are maximum times between maintenance operations. Perform more often under sever conditions.							
	FIRST 5 HOURS	FIRST 100 HOURS	BEFORE EACH USE	EVERY 25 HOURS	EVERY 100 HOURS	EVERY 200 HOURS	EVERY 400 HOURS	YEARLY
<b>ENGINE</b>								
Consult the engine manual for additional information and instructions.								
Check/Top Up Oil Level			X					
Check for Leaks			X					
Clean Air Intake Screen			X					
Clean Air Cleaner Precleaner								
Clean Air Cleaner Element				X				
Clean Cooling Fins					X			
Change Oil and Filter	X	See engine manufacturer's manual						
Check/Replace Spark Plugs							X	
<b>TRANSAXLE</b>								
Check Oil Level	X		X					
Check for Leaks	X		X					
Change Oil and Filter		X					X	
<b>MACHINE</b>								
Check Interlock Operation			X					
Check Tire Pressures			X					
Check/Top Up Battery								X
Lubricate All Points			X					





## NOTES

This image shows a blank sheet of white paper with horizontal ruling lines. The lines are evenly spaced and extend across the width of the page. There are no margins, text, or other markings on the paper.

NOTE: After first 5 hours of operation change engine oil and filter.



## CHECK DAILY

### Operator Presence Interlock System - Start Operation

For the engine to crank, the parking brake must be on, the PTO (blades) off and traction levers in the neutral lock position. Sit in the seat and check, one by one, if the engine will crank with the parking brake off, the blades on, and either traction lever out of neutral lock.

### Operator Presence Interlock System - Run Operation

The operator must be in the seat for the engine to run with the parking brake off, the traction levers moved out of the neutral lock position, or the blades on. To check:

1. Start the engine and run at 1/2 throttle with the operator on the machine but raised off the seat.
2. One by one: move the parking brake to the OFF position, traction levers out of the neutral lock position (check each independently), and turn the blades on. Each check should kill the engine after 1/2 second. (A 1/2 second delay is built into the system to prevent engine cutout when traversing rough terrain.)

Repair machine before using if the Operator Presence Interlock System does not operate correctly in start or run. Contact your authorized Schiller Grounds Care, Inc. dealer.

### Hardware

Tighten any nuts and bolts found loose. Replace any broken or missing cotter pins. Repair any other problems before operating.

### Tire pressure

Rear tires should be kept inflated to 12 lbs/in<sup>2</sup> (0.8 kg/cm<sup>2</sup>). Front tires should be kept inflated to 15 lbs/in<sup>2</sup> (1.05 kg/cm<sup>2</sup>). Improper tire inflation can cause rapid tire wear and poor traction. Uneven inflation can cause uneven cutting. Over inflation of caster tires can cause casters to "wobble" on hard surfaces.

## BATTERY-AGM TYPE BATTERY SUPPLIED

### WARNING

Battery acid is caustic and fumes are explosive and can cause serious injury or death. Use insulated tools, wear protective glasses or goggles and protective clothing when working with batteries. Read and obey the battery manufacturer's instructions.

Be certain the ignition switch is OFF and the key has been removed before servicing the battery.

1. Verify battery polarity before connecting or disconnecting the battery cables.
2. When installing the battery, always assemble the RED, positive ( + ) battery cable first and the ground, BLACK, negative ( - ) cable last.
3. When removing the battery, always remove the ground, negative ( - ) cable first and the red, positive ( + ) cable last.

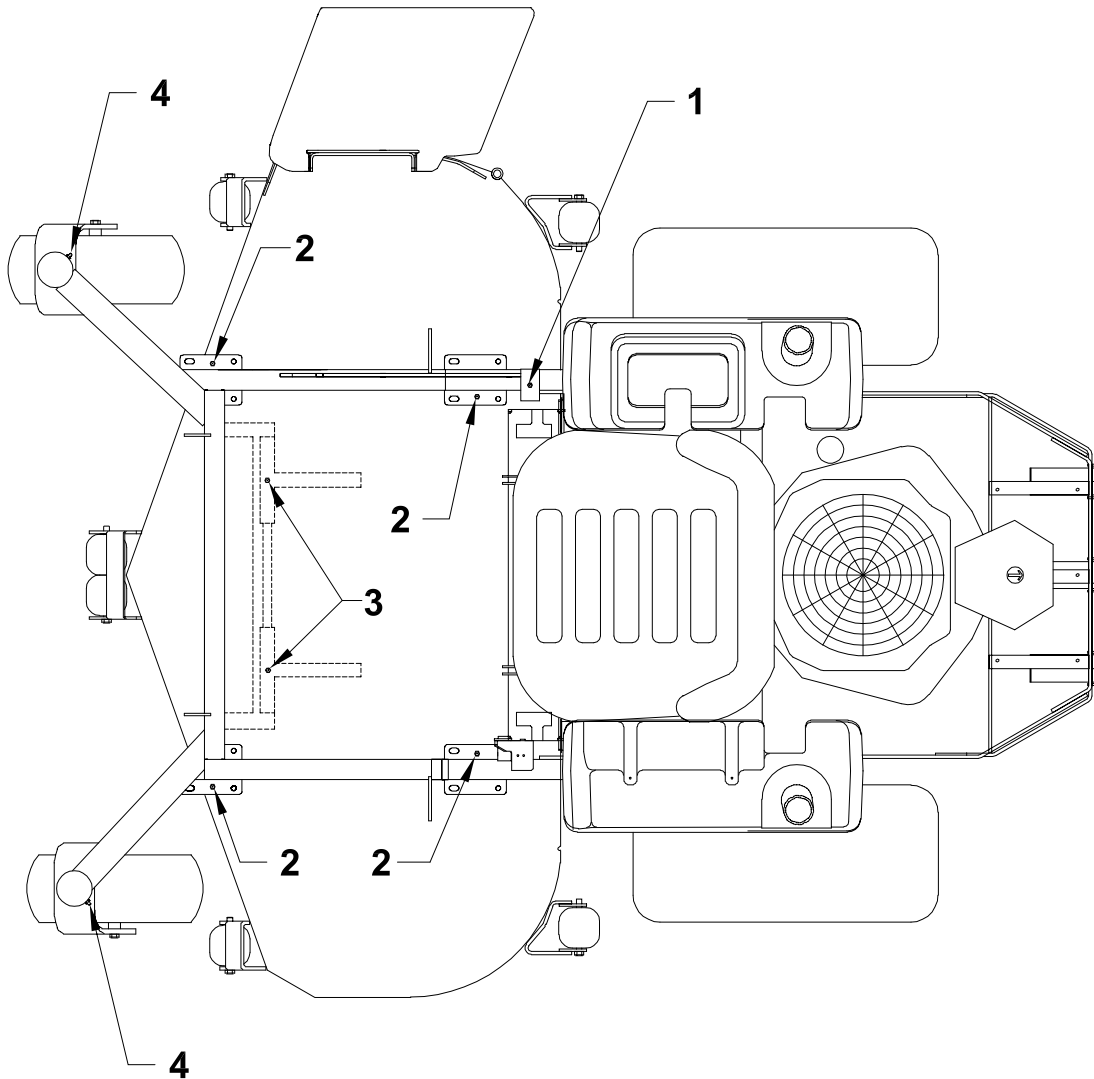
4. AGM type battery. **Use AGM charger when charging.**

5. Clean the cable ends and battery posts with steel wool. Use a solution of baking soda and water to clean the battery. Do not allow the solution to enter into the battery cells.

6. Tighten cables securely to battery terminals and apply a light coat of silicone dielectric grease to terminals and cable ends to prevent corrosion. Keep terminal covers in place.



## FastCat RZ



### LUBRICATION

Every 50 hours of operation, lubricate the following points (1-3) with grease:

1. Deck lift lever (1 point)
2. Deck lift pivots (4 points)
3. Pull arms (2 points located at the front of the cutterdeck)
4. Caster wheel pivots (2 points)  
(Lubricate every 500 hours or once a year)

**NOTE ON BLADE SPINDLES** - The blade spindles on these machines use a superior sealed bearing that does not require relubrication.



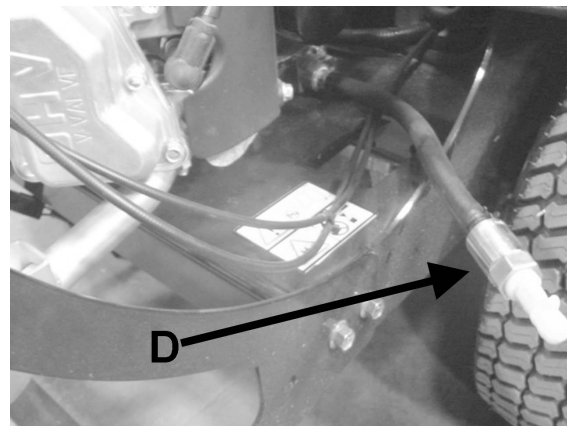
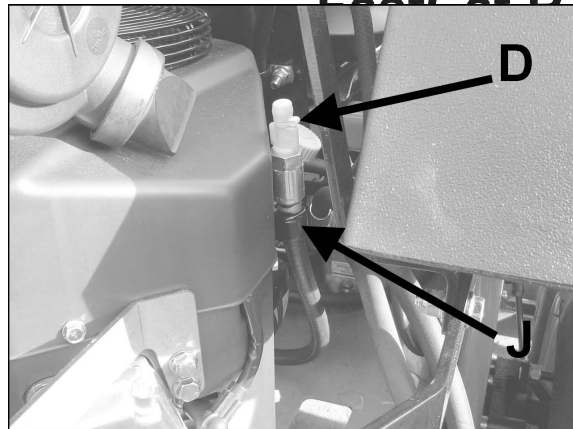
## ENGINE OIL

Do not perform engine maintenance without the engine off, spark plug wires disconnected and PTO disengaged.

### AFTER FIRST FIVE (5) HOURS

While the engine is warm:

1. Release the oil drain hose assembly from the engine clip **J**. Lay hose assembly over the frame edge or through the frame cutout, which ever is most convenient.
2. Remove the rubber cap **D** from the tip of the hose assembly and turn the drain valve to allow oil to drain from the engine. Dispose of used oil in accordance with local requirements.
3. Clean drain valve and tighten the plastic portion of the drain valve back into the metal portion of the valve. Replace rubber cap over the tip of the valve. Replace hose assembly back into engine clip.
4. Change oil filter.
5. Fill the crankcase with fresh oil to the full mark. Do not overfill. See engine manual for oil specifications.



### DAILY

1. Check oil level with the dipstick.
2. If oil is needed, add fresh oil of proper viscosity and grade. See engine manual for oil specifications. Do not overfill.
3. Replace dipstick before starting engine.

### PERIODIC OIL CHANGES

1. See engine manual for oil and filter change intervals after the break-in period.
2. Follow instructions for first oil change, above.

## SPARK PLUGS

Remove each plug and check condition.

- Good operating conditions are indicated if the plug has a light coating of grey or tan deposit.
- A white blistered coating indicates overheating. A black coating indicates an "over rich" fuel mixture. Both may be caused by a clogged air cleaner or improper carburetor adjustment.
- Do not sandblast, wire brush or otherwise attempt to repair a plug in poor condition. Best results are obtained with a new plug.
- Set plug gap as specified in engine manual..

## FUEL FILTER

An in-line fuel filter is located in the fuel supply line. Inspect at every oil change to make sure it is clean and unobstructed. Replace if dirty.



## FastCat RZ

### AIR CLEANER

Clean and replace the air cleaner element as specified in the service chart. Uneven running, lack of power or black exhaust may indicate a dirty air cleaner.

#### KAWASAKI MODELS

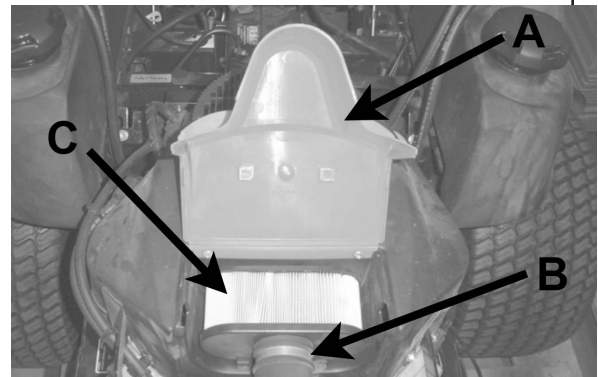
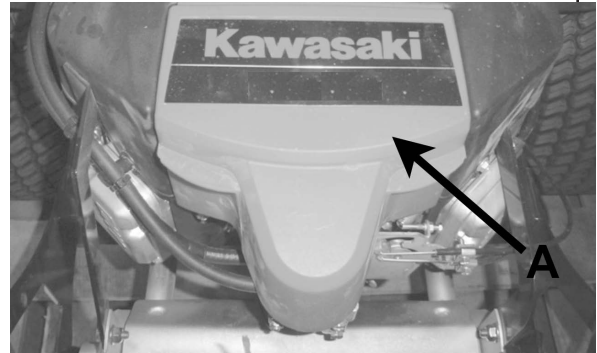
To replace air cleaner:

1. Lift cover **A**.
2. Loosen clamp **B** and remove existing air cleaner element **C**.
3. Insert new element **C** and tighten clamp **B**.  
Close cover **A**.

Every 100 hours (more often under very dusty or dirty conditions), check the paper cartridge.

- Clean by tapping gently.
- Do not wash the cartridge or use compressed air which can cause damage.
- Replace when cartridge is dirty, bent or damaged.

#### KAWASAKI MODELS:

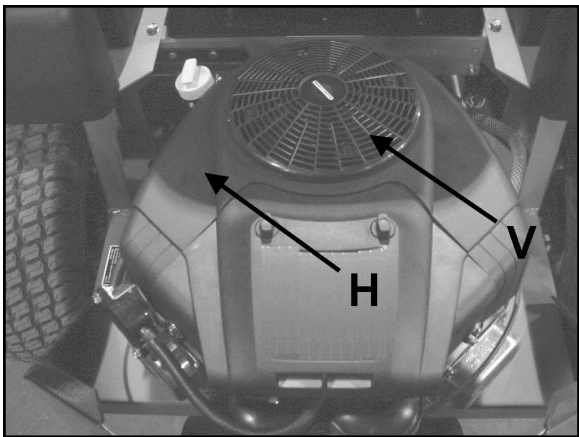




ENGINE COOLING

Continued operation with a clogged cooling system will cause severe overheating and can result in engine damage.

- **Daily:** Clean air intake screen **V**.
- **Every 100 hours:** Clean cooling fins beneath blower housing **H** with reference to information in the engine manufacturer's manual.



SPECIFIC TORQUES

BLADE BOLTS	70 FT-LBS (95 Nm)
WHEEL HUB NUTS	150 FT-LBS (203 Nm)
ENGINE CRANKSHAFT BOLT	50 FT-LBS (68 Nm)
TRANSAXLE PULLEY NUT	28.3 - 41.6 FT-LBS (38 - 56 Nm)
TRANSAXLE DRAIN PLUG	15 - 20 FT-LBS (20 - 27 Nm)
TRANSAXLE FILTER	130 - 150 in-lbs (14.6 - 16.9 Nm)

PURGING TRANSAXLES

Due to the effects air has on efficiency in hydrostatic drive applications, it is critical that it be purged from the system.

These purge procedures should be implemented any time a hydrostatic system has been opened to facilitate maintenance or any additional fluid has been added to the system.

Purging may be required if the unit shows any of the following symptoms:

- Noisy operation.
- Lack of power or drive after short term use.
- High operation temperature, excessive oil expansion.

1. Check the transaxle fluid, fill to proper level, if required.
2. Raise the drive wheels off the ground. Support unit with jackstands or other suitable means.
3. With the bypass valves open, and the engine running, slowly move the control levers in both forward and reverse directions 5 to 6 times. As air is purged from the unit, the oil level will drop.
4. With the bypass valve closed, and the engine running, slowly move the control levers in both forward and reverse directions 5 to 6 times.
5. Stop engine. Check the transaxle fluid level, add fluid as required.
6. It may be necessary to repeat steps 3-5 until all the air is completely purged from the system. When the transaxle moves forward and reverse at normal speed, purging is complete.



## FastCat RZ

### TRANSAXLES

#### **⚠ WARNING**

Inattention to proper safety, operation, or maintenance procedures could result in personal injury, or damage to the equipment. Schiller Grounds Care, Inc. recommends returning the machine to your authorized Schiller Grounds Care, Inc. dealer for service or repair. Check and change oil after initial 75-100 hours. Change every 400 hours after that.

Perform transaxle maintenance with the engine off, spark plug wires disconnected and PTO disengaged.

#### TRANSAXLE FLUID CHANGE

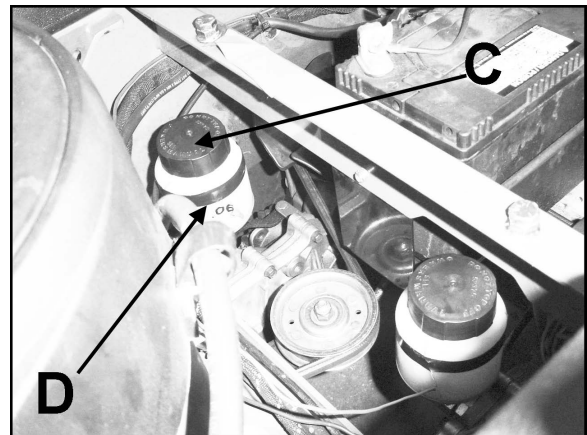
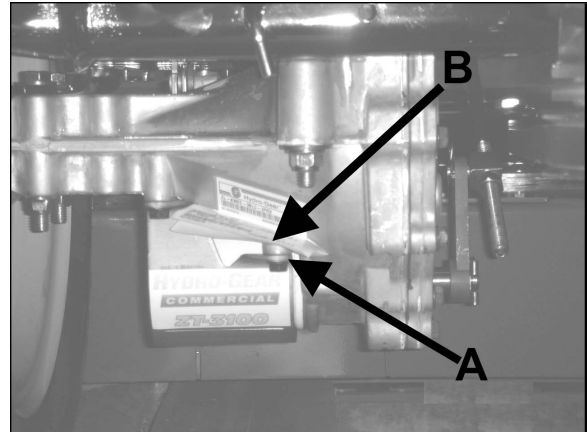
Change the transaxle fluid every 400 hours of operation or once a year. It is essential that the exterior of the transaxle be free of debris, prior to fluid maintenance.

1. Remove the three 1/4" filter guard screws and filter guard **A**. Remove the oil filter **B** from the transaxle and discard. Dispose of used oil in accordance with local requirements.
2. Wipe the filter base surface off and apply a film of new oil to the gasket of the new replacement filter. Install the new filter by hand, turn 3/4 to one full turn after the filter gasket contacts the filter base surface.
3. Re-install the filter guard and torque the three screws to 65 in. lbs.(7.5 n-m) each.
4. Remove cap **C**, fill the transaxles through the expansion tank **D** with approximately 2 quarts (1L) of SAE 20W-50 engine oil PER TRANSAXLE.

#### **CAUTION**

Do not overfill! If you overfill the transaxle while the unit is "cold", it may overflow as it reaches normal operating temperatures. The oil level should not be above the manufacturer's suggestions. This will allow the space needed for the oil to expand as it warms up.

5. After starting engine, check the fluid level and continue to add oil to overflow tank **D** to fill line on tank.
6. Purge the transaxles, following the purging procedures on Page 16.

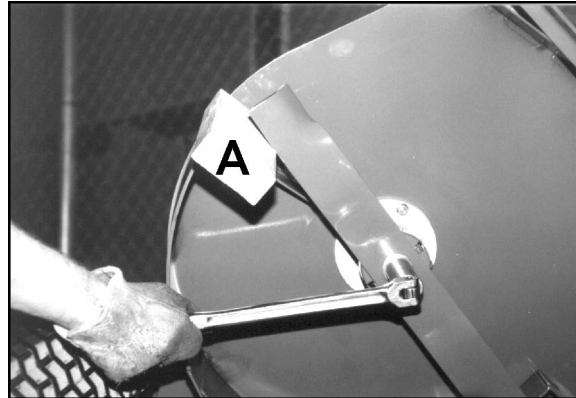




## BLADE REMOVAL

Follow these instructions to prevent injury during blade removal:

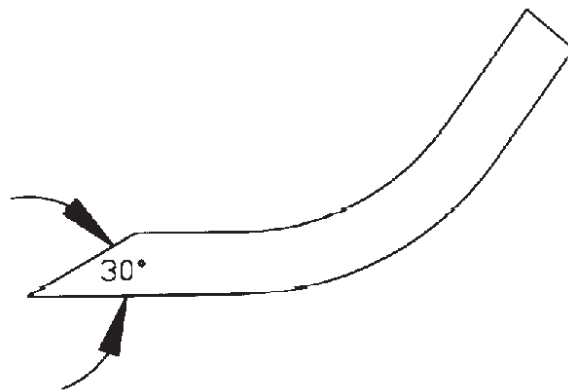
1. Loosen with a box wrench or a socket and long breaker bar. To gain additional leverage, slip a long pipe or thick-walled tube over breaker bar or wrench.
2. Insert wood block **A** as shown, with grain perpendicular to blade, to prevent blade from turning when loosening.
3. Wear thickly padded gloves. Keep hands clear of blade path. Blades may rotate when bolt releases.



## SHARPENING

Blades may be sharpened by filing or grinding.

- Inspect blades before sharpening.
- Replace bent or cracked blades.
- Replace blades when the lift portion has worn thin.
- Maintain cut angle at 30°.
- Do not overheat blades when sharpening.
- Always use Schiller Grounds Care, Inc. blades. Use of another manufacturer's blades may be dangerous.



## BLADE BALANCE

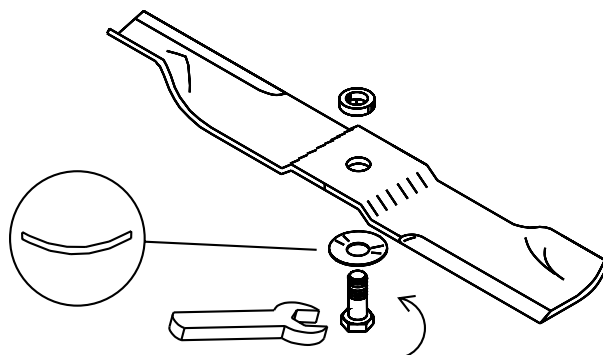
Blade balance must be maintained at 5/8 oz-in (19.4 g-cm) or less. Failure to keep blades balanced causes excess vibration, wear, and shortened life of most components of the machine.

### To balance a blade:

1. Sharpen blade first.
2. Balance the blade at the center.
3. Attach a 1/8 oz (3.9 g) weight at a distance 5" (127 mm) from center on the light end. This should make the light end the heavy end:
  - If it does, the blade is balanced.
  - If it does not, file or grind the heavy end until the addition of the weight makes the light end the heavy end.

## BLADE INSTALLATION

1. Wear thickly padded gloves to prevent cuts from the sharp blade.
2. Insert the blade bolt, in order, through the conical washer (cup side toward the blade, as shown), the blade, and the blade spacer.
3. Install assembly on the blade spindle.
4. Torque the blade bolt to 70 ft-lbs (95 N-m).





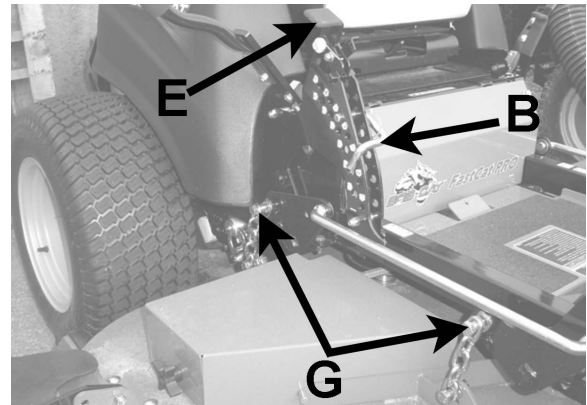
## FastCat RZ

### DECK LEVELING

1. Park the machine on a smooth, level surface. Raise the deck to the transport position.
2. Lower the deck onto a set of equal height blocks under the rear corners of the deck. Place another set of blocks under the front of the deck so that the deck top is pitched forward 1/8" (3mm).

**NOTE:** The front and rear of the deck are at different heights.

3. Measure the height of the blade cutting edge above the ground. Remove pin **B** and set the height of cut lever **E** to that height.
4. Loosen nuts on bolts **G**. Move bolts in slot to remove slack in chain. Tighten nuts on bolts **G**.



A 1/8" (3mm) forward pitched deck provides the best horsepower.  
A level deck provides the best quality of cut.  
A 1/8" (3mm) rearward pitched deck provides the best striping.  
Certain grass types and conditions may vary.

### HEIGHT OF CUT

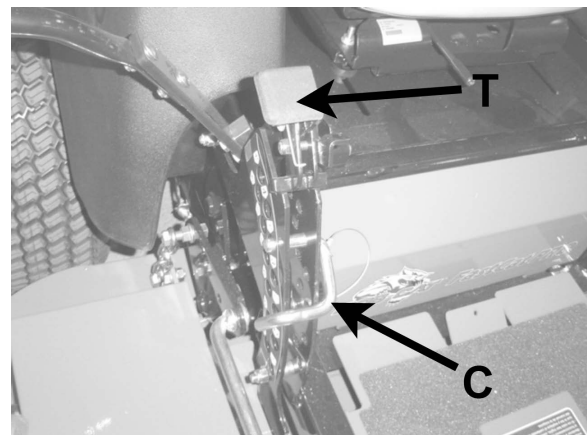
The height of cut is set by moving height of cut pin **C** to the hole designated for the height of cut desired.

To change the height of cut:

1. Lift the deck to the highest position using the foot lift pedal.
2. Move pin **C** to the selected hole.
3. Lower the deck until the latch lever **T** is stopped by the pin.

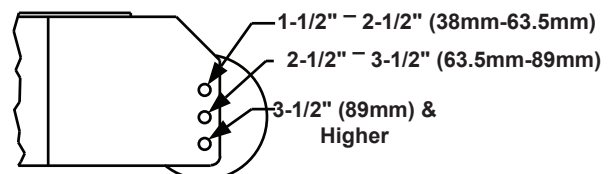
#### NOTES:

- Height of cut may vary due to the amount of tread on the tires, tire diameter or inflation pressure.
- For best results, adjust the rear deck rollers for the height of cut to be used (see below).



### DECK ROLLERS

The deck rollers are adjustable up and down to provide improved deck flotation and scalping protection at various heights of cut. They are not intended to ride continuously on the ground. Adjust no closer than 3/8" (10mm) to the ground.



Height of cut ranges for roller adjustment



## PARKING BRAKE

**NOTE:** There are 2 brakes, 1 on each transaxle.

The parking brake should keep the machine from moving. To check the parking brake, park the machine on a level surface, open the bypass valves and set the parking brake to **ON**. Attempt to move the machine forward and backward by pushing it. If the machine moves, adjust the parking brake linkage as follows:

1. Move the machine to a flat horizontal surface.
2. Grip the flats on the brake rod **A**. Tighten nut **B** on the brake rod until you run out of threads. See Figure 1 for detailed view.
3. Move the parking brake handle to the **OFF** position.
4. Loosen nut **X**.
5. Hold brake arm in the **OFF** position as shown in Figure 2.
6. Adjust swivel **U** until swivel stud meets brake arm hole in the **OFF** position.
7. Insert cotter pin into formed end of linkage rod **U**.
8. Tighten nut **X**.
9. Repeat Steps 1-8 on the opposite side.

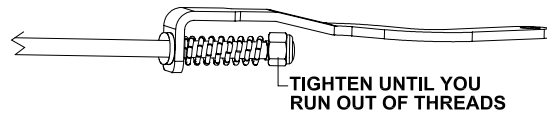
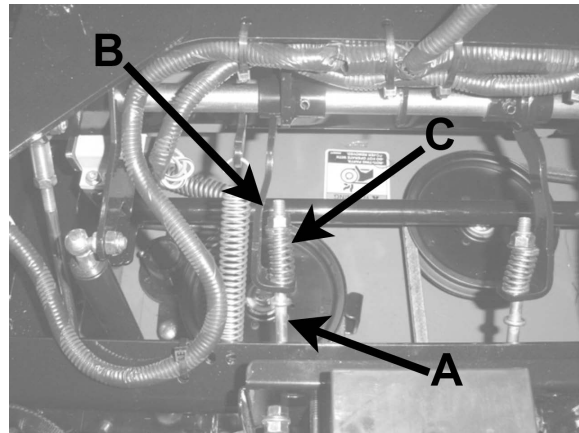


FIGURE 1

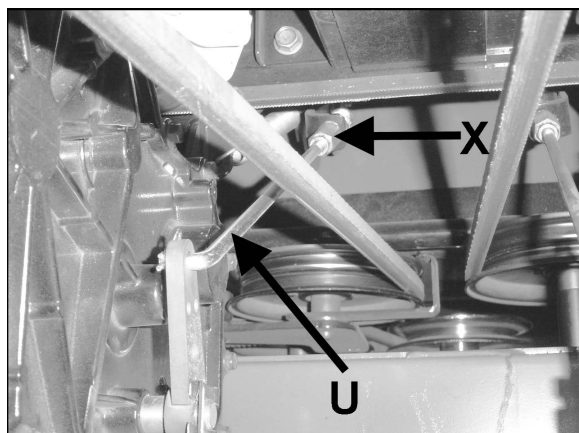


FIGURE 2



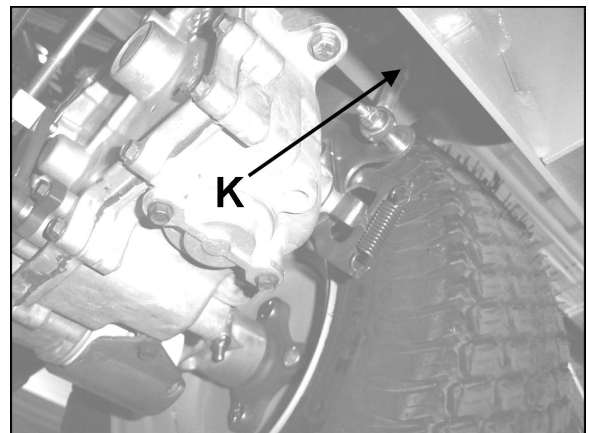
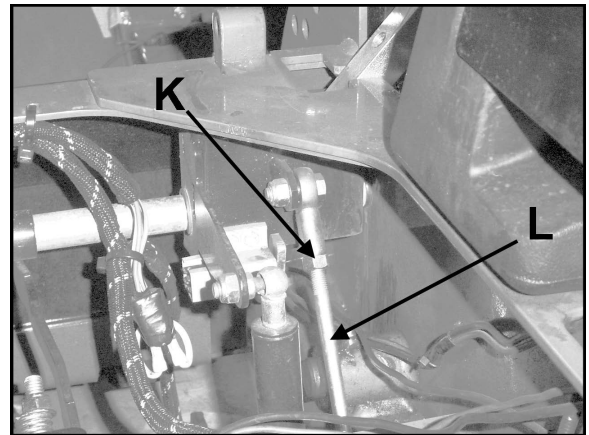
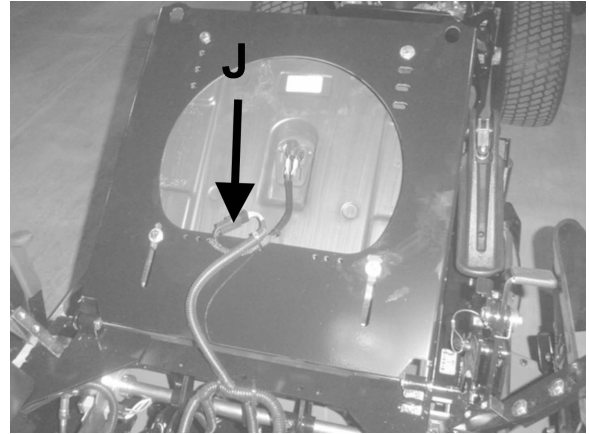
## FastCat RZ

### HYDROSTATIC TRANSAXLE ADJUSTMENTS

A turnbuckle style hydrostat neutral adjustment is provided.

#### Neutral:

1. Support the machine with the rear wheels off the ground. Use jackstands or equivalent support. Do not rely only on mechanical or hydraulic jacks.
2. Move the traction levers out into the neutral lock position and raise the seat.
3. Disconnect the seat switch wire and temporarily connect the two terminals with jumper wire **J** as shown.
4. Start the engine and run at low speed.
5. Move parking brake to the **OFF** position.
6. Loosen jam nuts **K** at both ends of the control rod **L**.
7. Rotate the control rod until the corresponding wheel stops turning. Lock the control rod jam nuts. Run the engine up to high idle and stroke the traction levers forward and back to check the adjustment. Move traction levers back to neutral and readjust if necessary.
8. Repeat steps 6 and 7 for the opposite side.
9. Remove the jumper wire and reconnect the seat switch.





# BELT REPLACEMENT



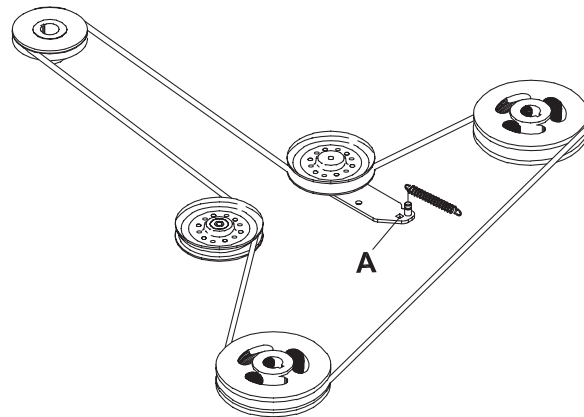
**NOTE:** Always use Schiller Grounds Care, Inc. replacement belts, not general purpose belts. Schiller Grounds Care, Inc. belts are specially designed for use on this mower and will normally last longer.

## CUTTERDECK BELT

1. Remove floorplate.
2. Set the cutterdeck in a middle height-of-cut position.
3. Use a 3/8" ratchet and extension to back tensioning idler off to remove belt from idler. Remove belt from cutterdeck pulleys.

**NOTE:** Use the 3/8" ratchet in the square hole **A** on the idler.

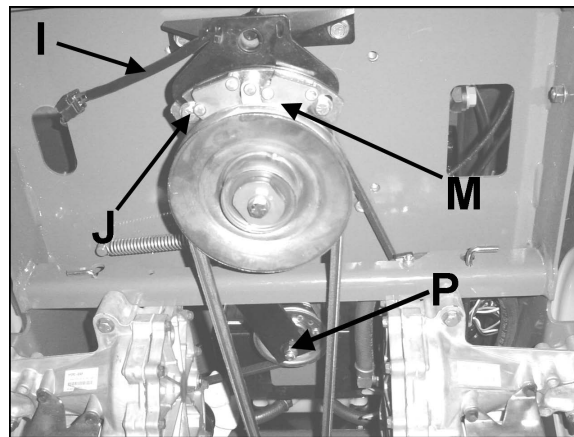
4. Remove belt from clutch pulley.
5. Install the new belt by performing these steps in reverse order.



**2 BLADES**

## HYDRO TRANSAXLE DRIVE BELT

1. Remove cutterdeck belt (see cutterdeck belt replacement).
2. Disconnect wire **I** at clutch **M**. Remove bolts **J** and remove torque restraint.
3. Using a ratchet with a 9/16" socket, place over nut at location **P**. Use the ratchet to rotate it enough to remove the transaxle drive belt.
4. Install a new transaxle drive belt by performing these steps in reverse order.
5. Inspect the fans. Replace if worn or damaged. Torque transaxle pulley nut to 28.3-41.6 ft-lbs (38-56 Nm).
6. Reinstall cutterdeck belt (see cutterdeck belt replacement).





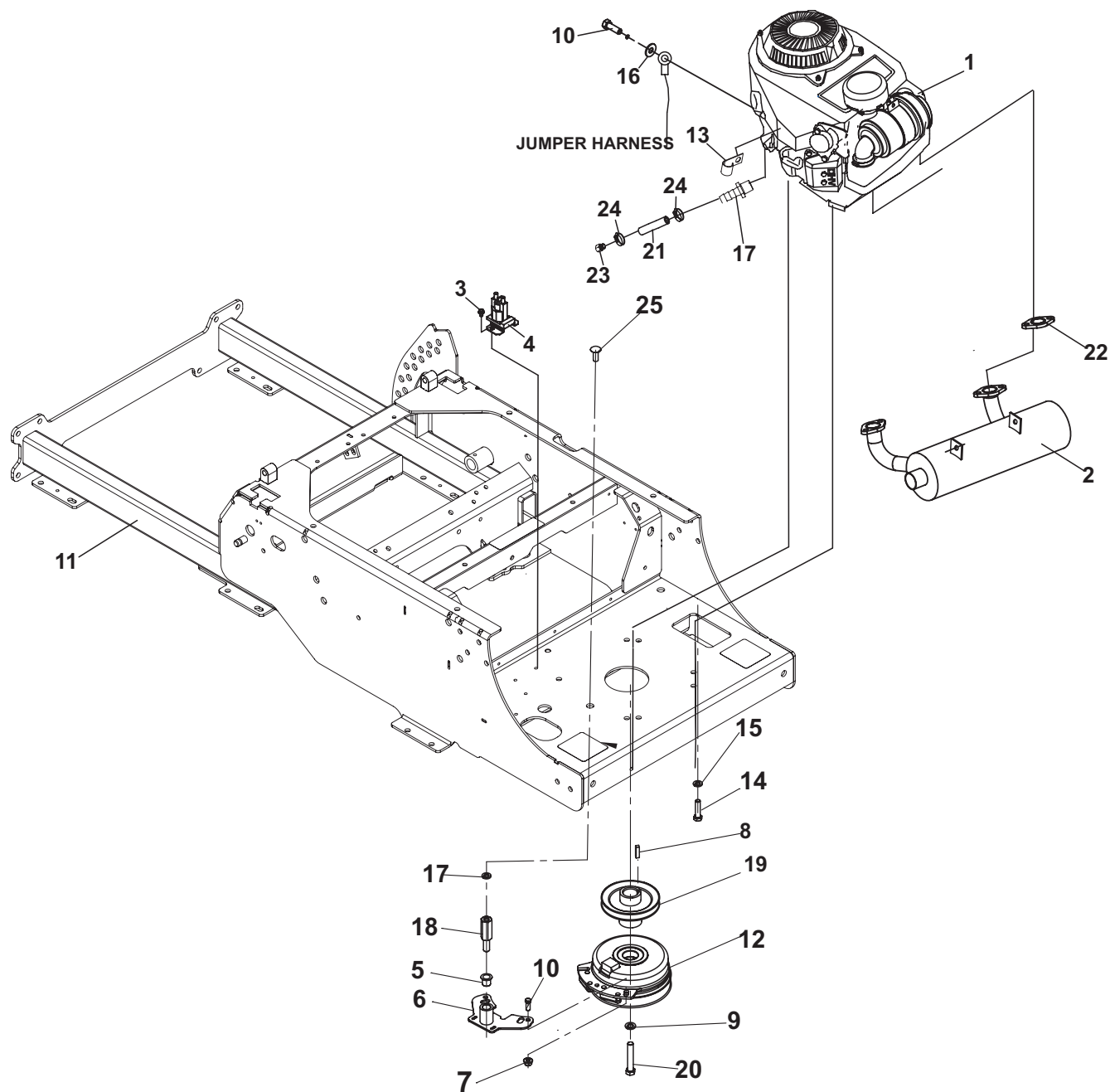
# PARTS SECTION



# FRAME-ENGINE/CLUTCH ASSY



FIGURE 1







# FRAME-ENGINE/CLUTCH ASSY

FIGURE 1

## FastCat RZ

ITM	PART NO.	DESCRIPTION	QTY	ITM	PART NO.	DESCRIPTION	QTY
1	4168559	ENGINE-FR600V KAW	1				
	4168368	FILTER-FUEL					
	4164537	FILTER-OIL					
	4168906	FILTER-AIR					
2	4164386	MUFFLER-KAW	1				
3	64152-23	1/4-20X3/8 LG SP SCREW	2				
4	38665	SOLENOID	1				
5	38304-03	BRG-FLANGED PLASTIC	1				
6	4173452.7	WLDMT-CLUTCH STOP	1				
7	64265-04	LOCKNUT-M8-1.25	2				
8	64164-12	KEY-1/4X1/4X1 SQ END	1				
9	64006-06	LOCKWASHER-HEL 7/16	1				
10	64205-001	BLT-MET M8-1.25X20	3				
11	4171784	S-FRAME W/ LABELS-EU	1				
12	4144116	CLUTCH-ENGINE PULLEY	1				
13	48412-01	CLAMP	1				
14	64123-70	BLT-HEX 3/8-16X1-1/2	4				
15	64006-03	LOCKWSHR-3/8 HELICAL	5				
16	64163-55	WSHR .328X.75X14 GA	1				
17	4164252-001	FITTING-3/8NP TO BARB	1				
18	4169106	PIN-CLUTCH	1				
19	4163309	PULLEY-ENGINE	1				
20	64123-78	BOLT-HEX 7/16-20X2-1/2	1				
21	69053-13	HOSE-HYDRO, 3/8X14"	1				
22	11061-7061	GASKET-MUFFLER	2				
23	4164251	VAILVE-OIL DRAIN	1				
24	88042-03	CLAMP-HOSE	2				
25	64018-44	BLT-CRG 3/8-16 X 1	1				

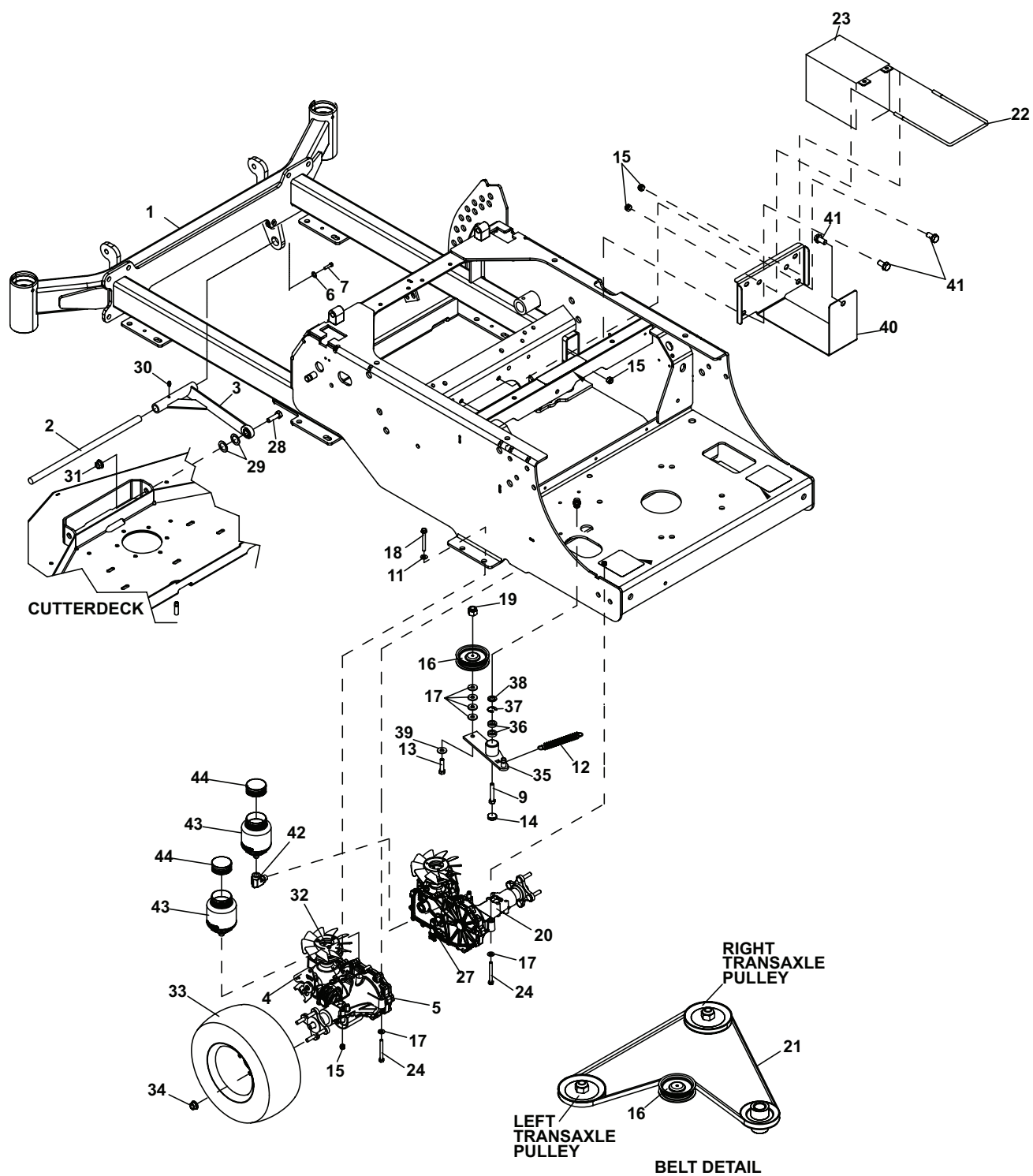
\* NOT ILLUSTRATED



# TRANSAXLE ASSY



FIGURE 2







# TRANSAXLE ASSY

FIGURE 2

## FastCat RZ

ITM	PART NO.	DESCRIPTION	QTY	ITM	PART NO.	DESCRIPTION	QTY
1	4171784	S-FRAME W/LABELS-EU	1	34	64187-03	WHEEL NUT 1/2-20	8
2	4162973	SHAFT-PULLARM MOUNT	1	35	4133302	S-ASSY-IDLER ARM PUMP (INCLUDES ITEMS 36-38)	1
3	4163957.7	WLDMT-PULL ARM	2				
4	4163819	ARM-CONTROL	2				
5	4163493	AXLE-LH	1				
		(INCLUDES ITEMS 4, 25, 26, 27, 32)		36	4128004	BEARING-BALL 10X26X8	2
*	970438	KIT-WHEEL HUB PULLER		37	64144-40	SNAP RING-26MM INTERNAL	1
				38	4128000	SEAL-16X26X7	1
6	64163-29	WASHER	2	39	64163-61	WASHER	1
7	64123-68	BOLT-HEX 5/16-18X1	2	40	4167258.7	TRAY-BATTERY	1
8*	4164227	CHARGE PUMP COVER KIT	1	41	64197-022	BLT-TDFM 3/8-16 X 3/4	3
9	64270-01	BOLT-MET, HEX M10-1.5x30	1	42	4163264-01	ADAPTER-90#6 ORB/#6 ORB	1
10*	4163771-01	GUARD-FILTER LH	1	43	4168619	ASSY-EXPANSION TANK	2
11	64163-55	WASHER .328X.75X14 GA	6	44	4142808-01	CAP-HYDROTANK	2
12	4164128	SPRING-TENSION	1	45*	4163772-01	GUARD-FILTER RH	1
13	64123-67	BLT-HEX 3/8-16 X 2	1				
14	4128001	END CAP-24 X 7	1				
15	64268-02	NUT-FL NYLON LOCK 5/16-18	10				
16	2228016	PULLEY-IDLER PUMP	1				
17	64163-31	WASHER, 25/64X1X12	8				
18	64123-55	BLT-HEX 5/16-18X3	4				
19	64268-03	NUT-FL NYLON LOCK 3/8-16	5				
20	4163494	AXLE-RH	1				
		(INCLUDES ITEMS 4, 25, 26, 27, 32)					
*	970438	KIT-WHEEL HUB PULLER					
21	4143636	BELT-TRANSAXLE	1				
22	4167239	ROD-BATTERY CLAMP	2				
23	4171099	BATTERY	1				
24	64123-88	BLT-HEX 3/8-16X2-3/4	4				
25*	4142045-06	FILTER-TRANSAXLE	2				
26*	4163819	SPRING-CONTROL ARM	2				
27	4163820	ARM-BRAKE	2				
	4164862	CLIP-RETAINING	2				
		(USE WITH BRAKE ARM)					
28	64123-168	BLT-HEX 5/8-11X2-1/2	2				
29	64163-93	WSHR-.635 X 1.12 X.062	4				
30	85010N	ZERK, 1/4-28	4				
31	64229-06	LOCKNUT, NYLON 5/8-11	2				
32	4164048	KIT-FAN/PULLEY TRANSAXLE	2				
33	4142752	ASSY-WHEEL 20X8.0-10	2				
	4142752-03	TIRE-20X8-10 OTR GMSTR					
	4132433-02	WHEEL- 10 X 7.00					
		(USED ON 942311EU)					
	4163731	ASSY-TIRE 20X6.5-10	2				
	4163731-02	TIRE-20X6.5-10 GRSMSTR					
	4163731-01	WHEEL-10 X 5.375					
		(USED ON 942317EU)					

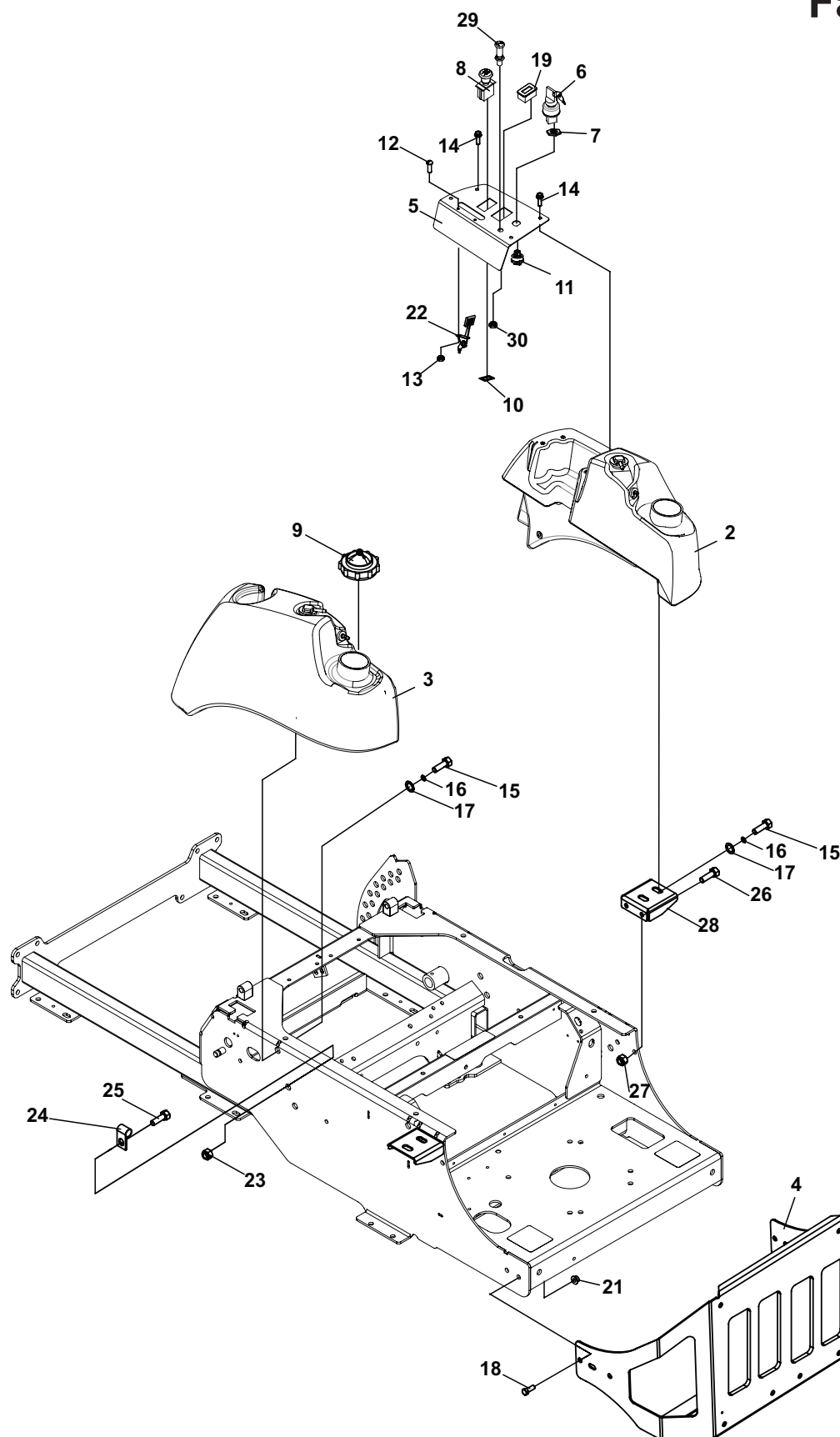
\* NOT ILLUSTRATED



# FUEL TANK/BUMPER & CONTROL PANEL



FIGURE 3







## FUEL TANK/BUMPER & CONTROL PANEL

FIGURE 3

### FastCat RZ

ITM	PART NO.	DESCRIPTION	QTY	ITM	PART NO.	DESCRIPTION	QTY
1	4171784	S-FRAME W/LABS-EU	1				
2	4165504	TANK-FUEL RH	1				
3	4165503	TANK-FUEL LH	1				
4	4171767.7	BUMPER	1				
5	4166245	S-CONTROL PANEL	1				
6	128010-03	S-COVERED KEY	1				
7	128010-01	S-KEY SWITCH NUT 5/8-32	1				
8	2721505	SWITCH-PTO	1				
9	4165291	CAP-FUEL TANK	2				
10	2188178	SWITCH-RETAINER	1				
11	128010	SWITCH, KEY	1				
12	64152-46	SCREW-SLT HH 10-24X1/2	2				
13	64025-15	NUT-HEX #10-24 KEPS	2				
14	64262-001	BLT-FLG HD 1/4-20 X 1/2	4				
15	64123-50	BOLT-3/8-16X1 HEX	14				
16	64006-03	WASHER-3/8	10				
17	64163-69	WASHER-FLAT	10				
18	64262-010	BLT-FLG HD 3/8-16 X 3/4	4				
19	4168452	METER-HOUR	1				
20*	4144213	TUBE-FUEL FEED	2				
21	64268-03	NUT-WLF 3/8-16	4				
22	118020-17	CONTROL-THROTTLE	1				
23	64229-02	LOCKNUT-5/16-18	2				
24	48228-12	CLAMP-3/4 CLIP	2				
25	64123-54	BLT-HEX 5/16-18X3/4	2				
26	64123-15	BLT-HEX 3/8-16X3/4	4				
27	64229-03	NUT-NYLON LOCK 3/16-18	4				
28	4163880.7	BRKT-TANK MOUNTING	2				
29	108009-09	CABLE-CHOKE	1				
30	64025-04	NUT-HEX 3/8-24	1				

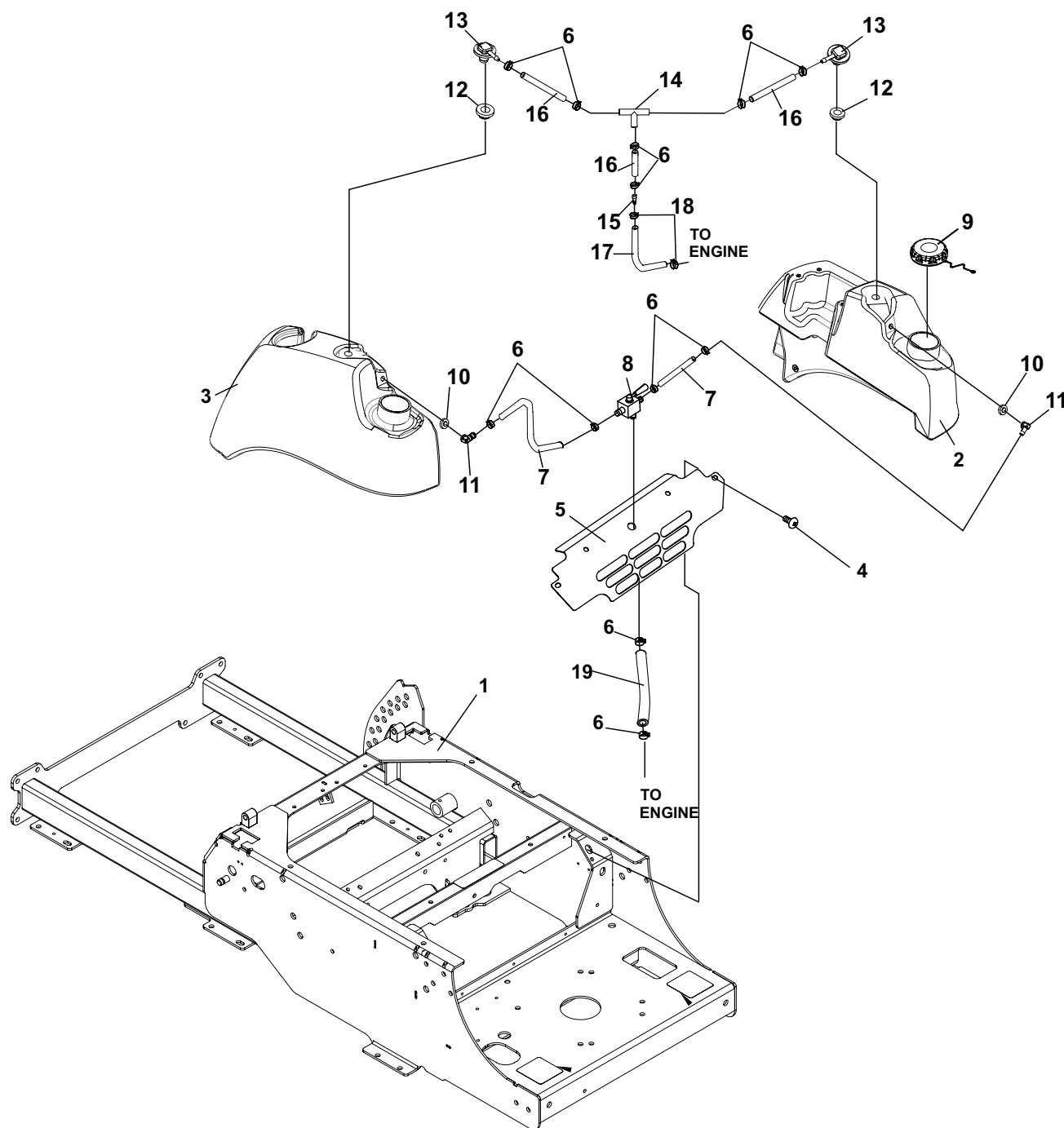
\* NOT ILLUSTRATED



# FUEL VALVE & COVER PLATE



FIGURE 4







## FUEL VALVE & COVER PLATE

FIGURE 4

### FastCat RZ

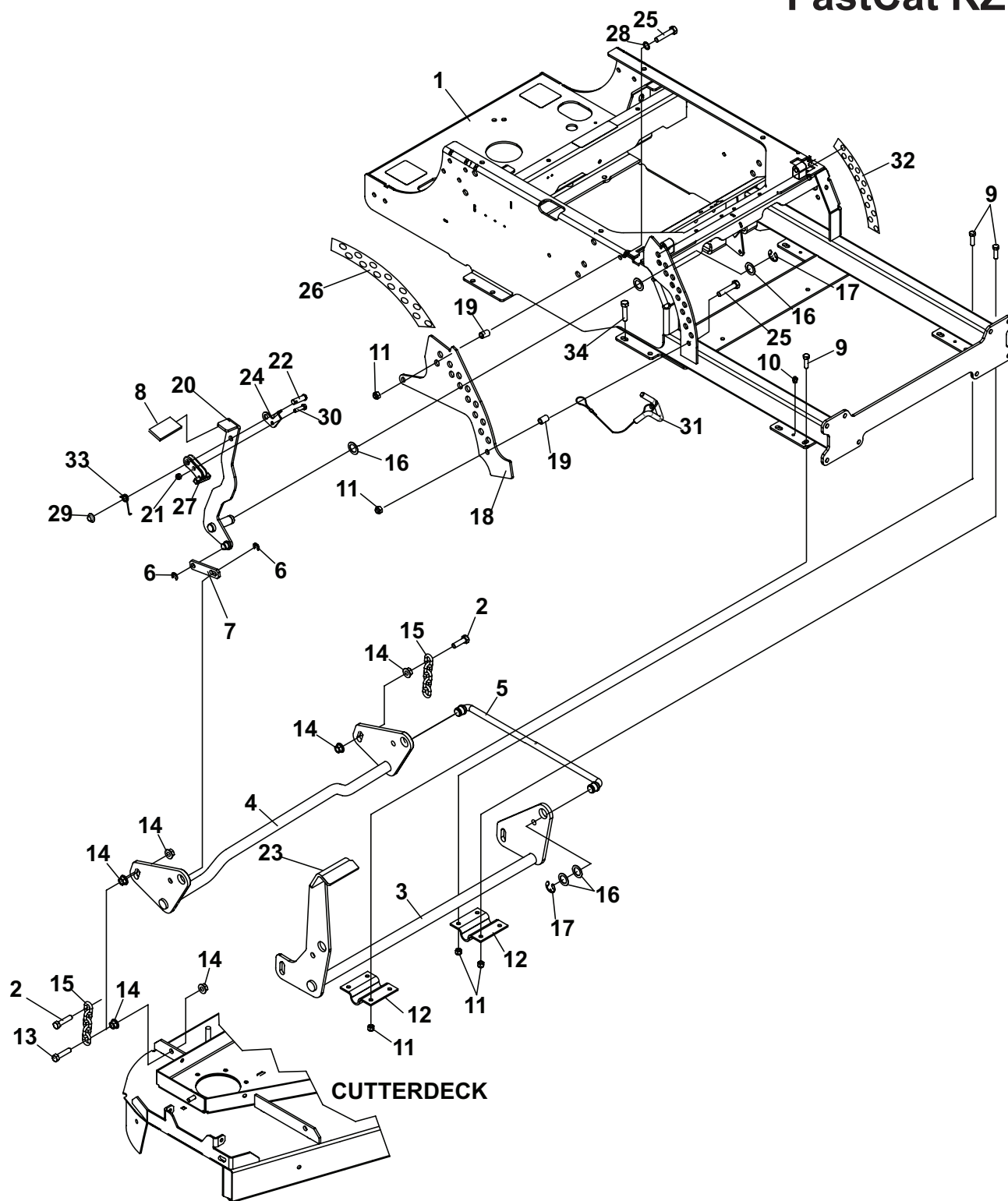
ITM	PART NO.	DESCRIPTION	QTY	ITM	PART NO.	DESCRIPTION	QTY
1	4171784	S-FRAME W/LABS-EU	1				
2	4165504	TANK-FUEL RH BOBCAT (INCLUDES 10-13, 19-21)	1				
3	4165503	TANK-FUEL LH BOBCAT (INCLUDES 10-13, 19-21)	1				
4	64197-001	BLT-TDFM 5/16-18X3/4	2				
5	4172807.7	COVER-FRAME, REAR	1				
6	88042N	HOSE CLAMP	12				
7	4162977-021	HOSE-1/4 FUEL LINE 25"	2				
8	2188161	VALVE-TANK SELECTOR	1				
9	4165291	CAP-FUEL TANK	2				
10	4132325	GROMMET-FUEL TANK	2				
11	4165503-05	TUBE-PICK UP	2				
12	4165387	GROMMET-ROLL OVER	2				
13	4165763	ROLLOVER VENT	2				
14	4165863	TEE-FITTING 1/4"HOSE	1				
15	4165864	FTTNG-HOSE 1/4" TO 3/16"	1				
16	4162977-020	HOSE-FUEL LINE	3				
17	4162989-001	HOSE-FUEL LINE	1				
18	88042-01	CLAMP	2				
19	4162977-010	HOSE-1/4 FUEL LINE 20"	1				



# DECK LIFT ASSEMBLY



FIGURE 5







# DECK LIFT ASSEMBLY

FIGURE 5

## FastCat RZ

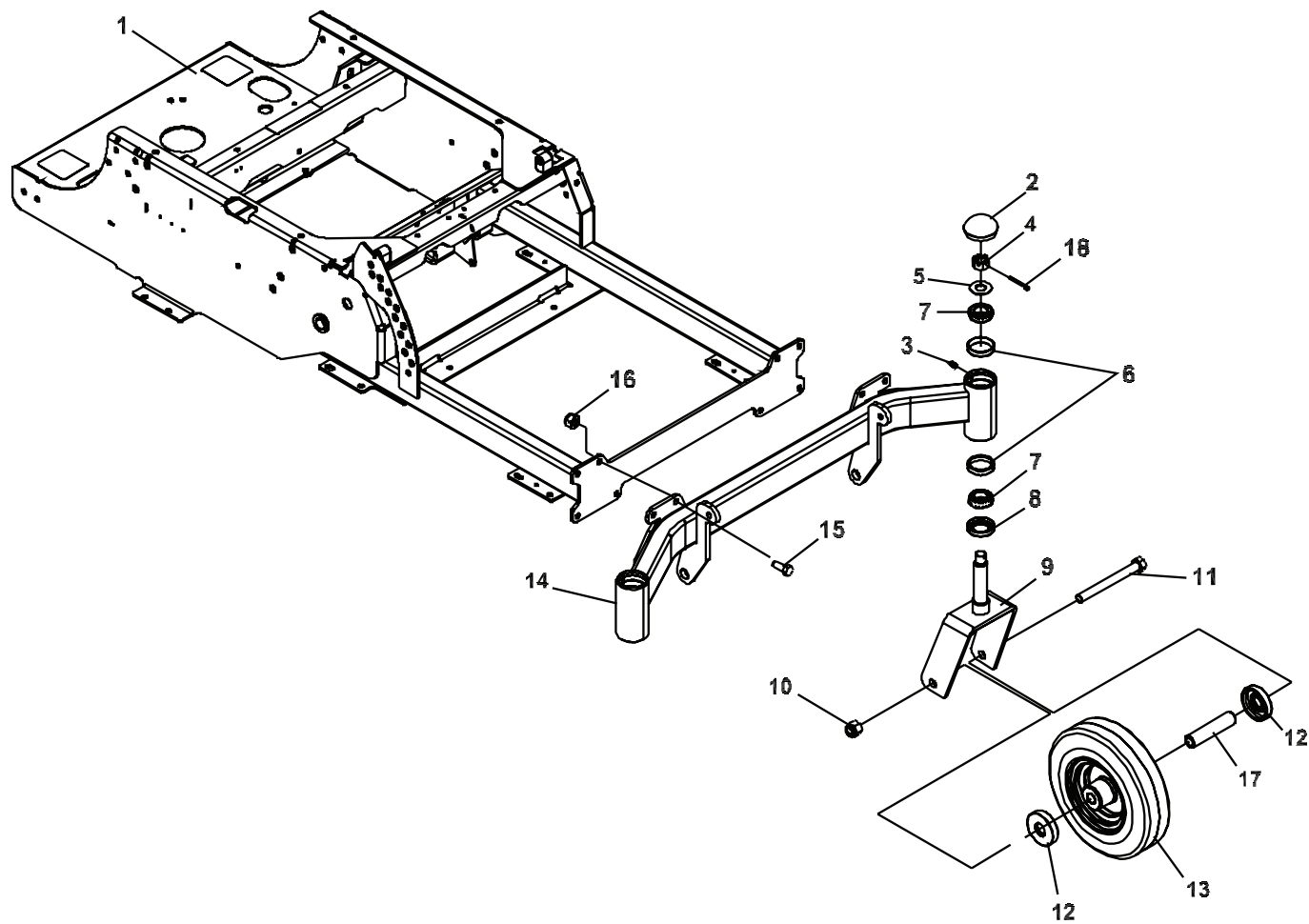
ITM	PART NO.	DESCRIPTION	QTY	ITM	PART NO.	DESCRIPTION	QTY
1	4171784	S-FRAME W/LABS-EU	1				
2	64205-060	BOLT-MET M12-1.75X50	4				
3	4167796.7	WLDMT-DECKLIFT, FRONT	1				
4	4168533.7	WLDMT-DECKLIFT REAR	1				
5	4167826	ROD-DECK LIFT	2				
6	64221-02	E-RING .250	2				
7	4163891.7	BRKT-LIFT LINK	1				
8	4167151	GRIP	1				
9	64123-50	BOLT-HEX 3/8-16X1	15				
10	85010N	ZERK, 1/4-28 STR	5				
11	64229-03	LOCKNUT-NYLON 3/8-16	18				
12	2182356.7	BRACKET-SHAFT HANGER	4				
13	64205-029	BLT-MET M12X1.75X40	4				
14	64246-04	NUT-WHIZ M12-1.75	16				
15	2188127	CHAIN-6.35 (.250) 5 LINKS	4				
16	64163-65	WASHER-.890X1.375X18GA	10				
17	64221-04	E-RING.875	5				
18	4167017.7	BRKT-OUTER DECK LIFT	1				
19	2183071-03	SPACER-15.88X10.32X24	2				
20	4167111.7	LEVER-DECK LIFT	1				
21	64268-02	NUT-FL NYLON LOCK 5/16-18	1				
22	64188-76	PIN-CLEVIS, 1/2 X 1-3/8	1				
23	4139785	MAT-FOOT LIFT	1				
24	4167108.7	ARM-LATCH	1				
25	64123-67	BLT-HEX 3/8-16X2	2				
26	4171734	LABEL-H.O.C. OUTER, -EU	1				
27	4162904.7	WLDMT-LVR STOP LATCH	1				
28	64163-31	WASHER	1				
29	64175-05	PUSHNUT-1/2 DIA	1				
30	64123-47	BLT-HEX 5/16-18X1-1/4	1				
31	4167018	ASSY, PIN & LANYARD	1				
32	4171735	LBL-HT CUT INNER-EU	1				
33	4167138	SPRING-TORSION	1				
34	64018-3	BLT-CRG 3/8-16X1	1				



# CASTER ASSEMBLY



FIGURE 6







# CASTER ASSEMBLY

FIGURE 6

## FastCat RZ

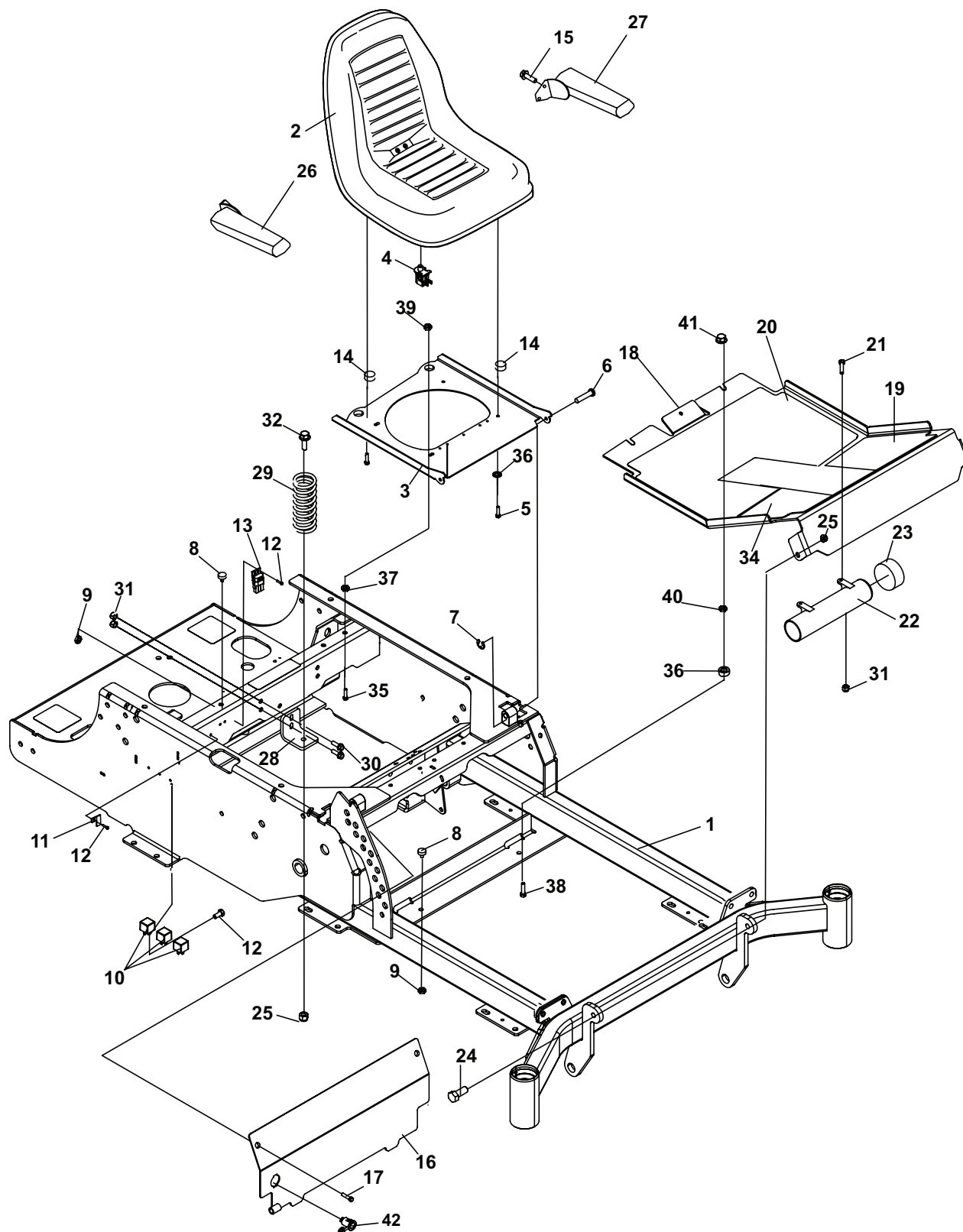
ITM	PART NO.	DESCRIPTION	QTY	ITM	PART NO.	DESCRIPTION	QTY
1	4171784	S-FRAME W/LABS,	1				
2	4162986	DUST COVER	2				
3	85010N	ZERK-1/4-28	2				
4	64025-20	NUT-HEX 3/4-16 SLOT U	2				
5	64163-26	WASHER	2				
6	48043-03C	CUP-OUTER BEARING	4				
7	48043-04C	CONE-OUTER BEARING	4				
8	48480	SEAL	2				
9	4143675.7	WLDMT-CASTER	2				
10	64229-06	NUT-NYLON LOCK 5/8-11	2				
11	64123-212	BLT-HEX 5/8-11X6					
12	2722231	SPACER-END	4				
13	2722233	WHEEL-11"ASSY-LT TYPE	2				
14	4162974.7	WLDMT-CSTR MOUNTING	1				
15	64123-16	BLT-HEX 3/8-16X1-1/4	8				
16	64229-03	LOCKNUT-NYLON 3/8-16	8				
17	2722230-07	SPANNER-11" WHEEL	2				
18	64140-9	COTTER PIN	2				



# KICKPLATE/SEAT ASSEMBLY



FIGURE 7







# KICKPLATE/SEAT ASSEMBLY

FIGURE 7

## FastCat RZ

ITM	PART NO.	DESCRIPTION	QTY	ITM	PART NO.	DESCRIPTION	QTY
1	4171784	S-FRAME W/LABS	1				
2	4163499	SEAT ASSEMBLY	1				
		(INCLUDES ITEMS 4,14,15,26,& 27)					
	*4151800	KIT-SEAT ADJUSTER					
	*4139431	KIT-ARM REST					
3	4168960.7	PLATE-SEAT	1				
4	4124009	SWITCH-SEAT NO	1				
5	64123-12	BLT-HEX 5/16-18X2-1/2	4				
6	33138-09	PIN-CLEVIS GRVD .38 X 1.31	2				
7	64144-30	SNAP RING .375	2				
8	4143354	BUMPER, SEAT MOUNTING	4				
9	64141-6	NUT-5/16-18	4				
10	2722325	RELAY-40AMP SEALED	3				
11	148082-20	FUSE-20 AMP	2				
12	64197-015	BLT-TDFM 10-32X1/2	7				
13	2188154	MODULE-DELAY	1				
14	2720975-07	SPACER-NYLON 3/8IN	17				
15	64139-16	BLT-WLF 5/16-18X5/8	2				
16	4164549.2	PLATE-FRONT REMOVABLE	1				
17	64197-005	BLT-TDFM 3/8-16X1-1/4	2				
18	4171785	S-FOOT PLATE-EU	1				
19	4167088	MAT-FOOT PLATE UPPER LH	1				
20	4165931	MAT-FOOT PLATE LOWER	1				
21	64018-2	BLT-CRG 1/4-20 X 3/4	2				
22	4169405	TUBE-DOCUMENT-EU LABEL	1				
23	38061A	CAP-VINYL	1				
24	64123-16	BLT-HEX 3/8-16X1-1/4	2				
25	64229-03	NUT-NYL LOCK 3/8-16	4				
26	4155681	ARM REST - RH	1				
27	4155680	ARM REST - LH	1				
28	4164330.7	BRKT-SPRING MOUNTING	2				
29	4164569	SPRING-SEAT	2				
30	64262-003	BLT-FLG HD 1/4-20X1	4				
31	64229-01	NUT-NYLON LOCK 1/4-20	6				
32	64262-011	BLT-FLG HD 3/8-16X1	2				
33*	970393	KIT-SEAT SPRING	1				
		(INCLUDES ITEMS 25,28-32)					
34	4167087	MAT-FOOT PLATE UPPER RH	1				
35	64123-293	BLT-HEX 1/2-13 X 3-1/2	1				
36	64163-55	WSHR .328X.75X14 GA	2				
37	64001-8	NUT-HEX JAM 1/2-13	1				
38	64123-47	BLT-HEX 5/16-18 X 1 1/4	4				
39	64268-05	NUT-FL NYLON LOCK 1/2-13	1				
40	64279-02	PUSHNUT-BOLT RETAINER	1				
41	64268-02	NUT-FL NYLOC 5/16-18	1				
42	4167193	PLUG-PLASTIC, 1.125"	1				

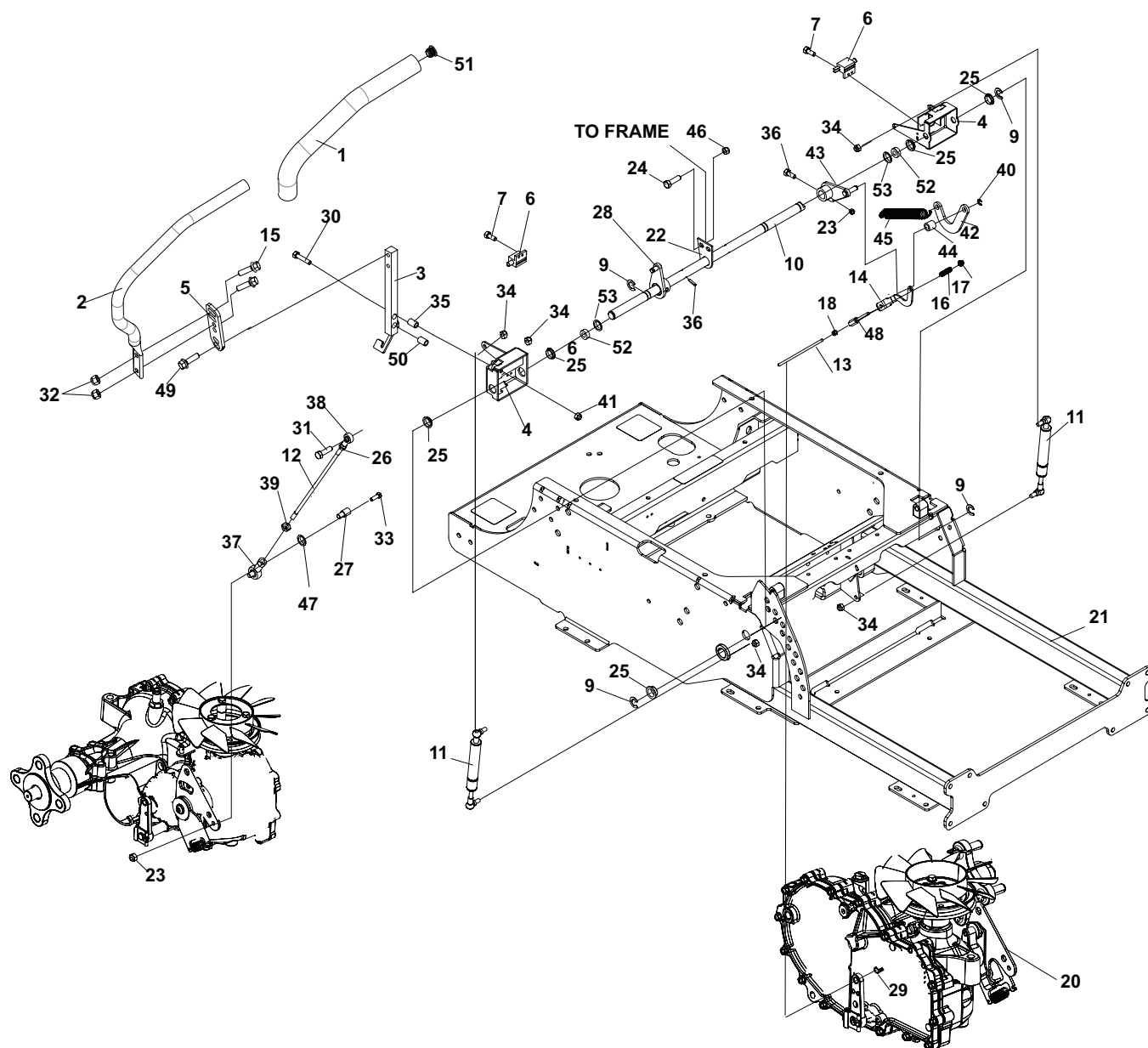
\* NOT ILLUSTRATED



# STEERING



FIGURE 8







# STEERING

FIGURE 8

## FastCat RZ

ITM	PART NO.	DESCRIPTION	QTY	ITM	PART NO.	DESCRIPTION	QTY
1	4165432	GRIP-HANDLE	2	38	4143595-02	ROD END-FEMALE LH	2
2	4165426.7	LEVER-TRACTION CNTRL	2	39	64025-03	NUT-HEX 5/16-24	2
3	4167093	WLDMT-CONTROL BAR, RH	1	40	64144-30	SNAP RING	2
*	4167094	WLDMT-CONTROL BAR, LH	1	41	64229-02	LOCKNUT-NYLON 5/16-18	4
4	4167097	WLDMT-CONTROL BOX RH	1	42	4147116.7	LINK-BRAKE	1
	4167098	WLDMT-CONTROL BOX LH	1	43	4155482.7	WLDMT-BRAKE ARM	1
5	4167025.7	BRKT-TRACTION LEVER	2	44	4147196	SPACER	1
6	108208	SWITCH DBL POLE	2	45	41-010	SPRING-TENSION	1
7	64197-015	BLT-TDFM 10-32X1/2 TORX	4	46	64268-01	NUT-FL NYLON LOCK 1/4-20	2
8	4127142	BSHG-CONTROL ARM	1	47	64251-002	WASHER-M6	2
9	64221-03	E-RING 19MM/.750	6	48	4164075	WLDMT-ROD PARKING BRAKE	2
10	4143676	BAR-CONTROL PIVOT	1	49	64123-50	BLT-FLG HD 3/8-16 X 1	4
11	4165499	DAMPNER	2	50	4162999	SPACER	2
12	4143571	ROD-CONTROL	2	51	4163692	CAP-TUBE END	2
13	4164024	ROD-PARKING BRAKE	2	52	64163-07	WSHR 1-1/32X1-3/4X1/4	2
14	4155661.7	LINK-PARKING BRAKE RH	1	53	85-SC12	SET COLLAR	2
*	4155660.7	LINK-PARKING BRAKE LH	1				
15	64018-3	BLT-CRG 3/8-16X1	4				
16	4155481	SPRING-COMPRESSION	2				
17	64268-03	LOCKNUT-NYLON 3/8-16	2				
18	64025-05	NUT-3/8-16 HEX	2				
19	4163494	TRANSAXLE-RH					
20	4163493	TRANSAXLE-LH					
21	4171784	S-FRAME W/LABS	1				
22	4146988.7	BRKT-CNTRL BAR SUPT	1				
23	64229-01	LOCKNUT-1/4-20 NYLON	3				
24	64123-89	BOLT-HEX 1/4-20X3/4	2				
25	4146187	BEARING-FLANGE	6				
26	64025-33	NUT-HEX 5/16-24 LH	2				
27	4145106	SPACER-CONTROL ROD	2				
28	4155483.7	BRAKE, ARM LINKAGE	1				
29	64168-2	COTTER-HAIRPIN	2				
30	64123-69	BOLT-5/16-18X1-1/2 HEX	2				
31	64123-68	BOLT-HEX 5/16-18X1	2				
32	64151-34	NUT-HEX LOCK, 3/8-16 JAM	4				
33	64123-105	BLT-HEX 1/4-20X1-5/8	2				
34	64229-02	NUT-NYLON LOCK 5/16-18	4				
35	4133156	SPACER	2				
36	64123-07	BLT-HEX 1/4-20 X 1 1/2	2				
37	4143595-01	ROD END-FEMALE RH	2				

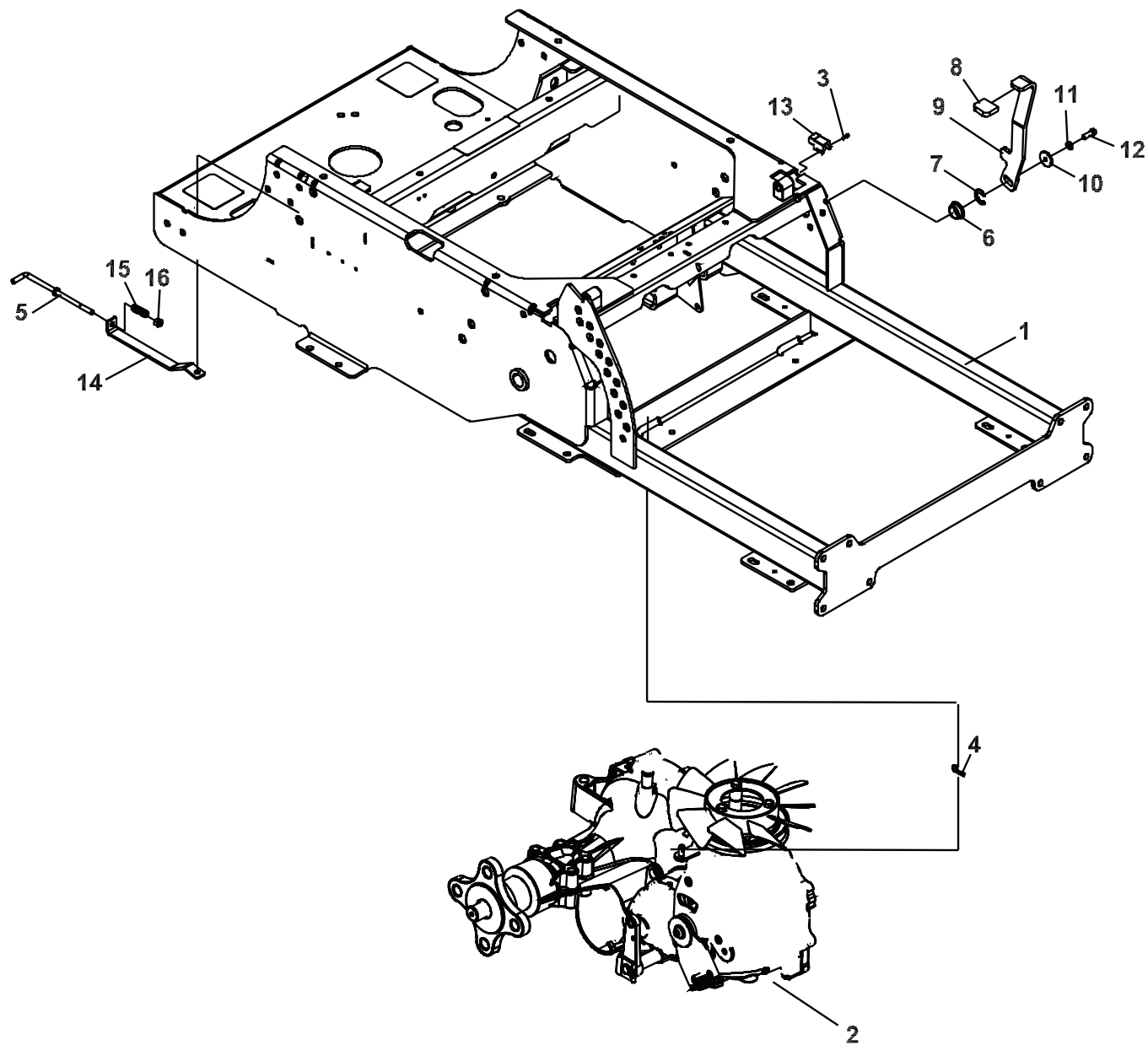
\* NOT ILLUSTRATED



# PARKING BRAKE



FIGURE 9







# PARKING BRAKE

FIGURE 9

## FastCat RZ

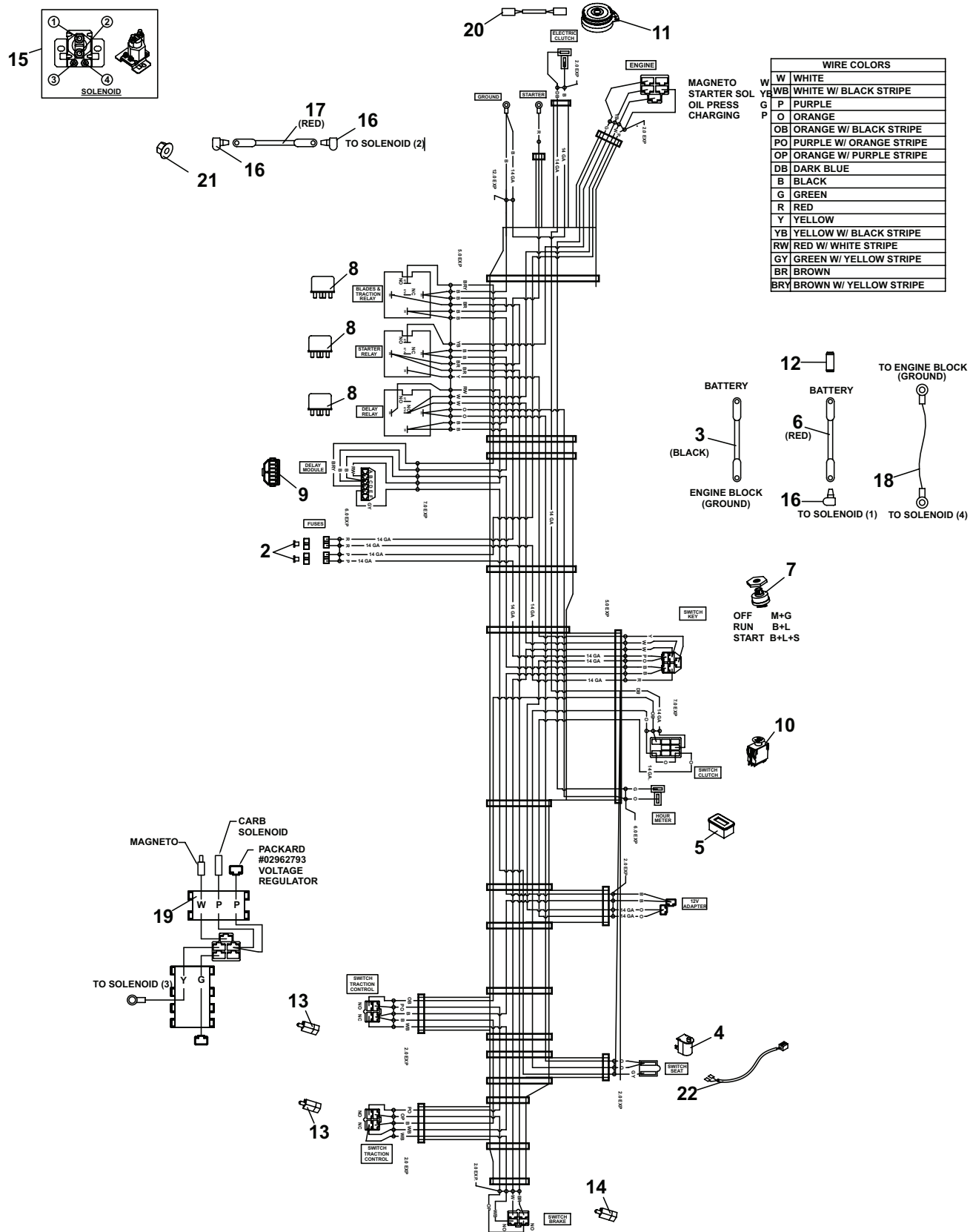
ITM	PART NO.	DESCRIPTION	QTY	ITM	PART NO.	DESCRIPTION	QTY
1	4171784	S-FRAME W/LABS,	1				
2	4163494	TRANSAXLE, RH	1				
3	64197-015	BLT-TDFM 10-32X1/2 TORX	2				
4	64168-2	COTTER-HAIRPIN.08X1.19	2				
5	4148697	ROD-BYPASS CONTROL	2				
6	4146187	BEARING-FLANGE	1				
7	64221-03	E-RING 19MM/.750	1				
8	2188155	GRIP	1				
9	4167102.7	HANDLE-BRAKE	1				
10	64163-34	WASHER	1				
11	64006-01	LOCKWASHER	1				
12	64123-89	BOLT-HEX 1/4-20X3/4	1				
13	2188156	SWITCH-NONO DBL POLE	1				
14	4148698.7	LINK-DUMP VALVE	2				
15	2720977	SPRING-COMPRESSION	2				
16	64229-01	LOCKNUT-1/4-20 NYLON	2				



# WIRE HARNESS



FIGURE 10







# WIRE HARNESS

FIGURE 10

## FastCat RZ

ITM	PART NO.	DESCRIPTION	QTY	ITM	PART NO.	DESCRIPTION	QTY
1	4154880	HARNESS-MAIN WIRE	1				
2	148082-20	FUSE 20 AMP	2				
3	30-419	CABLE-BATT 4 GA BLK 29"	1				
4	4124009	SWITCH-SEAT NO	1				
5	4168452	METER-HOUR	1				
6	30-180	CABLE-BATT 4 GA RED 29"	1				
7	128010	SWITCH, KEY	1				
8	2722325	RELAY-40AMP SEALED	3				
9	2188154	MODULE-DELAY	1				
10	2721505	SWITCH-PTO	1				
11	4144116	CLUTCH-ELECTRICAL	1				
12	30-184	COVER-POS TERMINAL	1				
13	108208	SWITCH DBL POLE	2				
14	2188156	SWITCH-NONO DBL POLE	1				
15	38665	SOLENOID	1				
16	2308095	COVER-TERMINAL	3				
17	108061-04	CABLE-BATTERY 20 RED	1				
18	2188225	WIRE-GROUND	1				
19	4168663	HARNESS-JUMPER					
20	2720949	ASSY-CLUTCH WIRE	1				
21	64141-2	NUT-WLF 1/4-20	1				
22	4164972	WIRE-SEAT SWITCH	1				
23*	56-081-36	SLEEVING, ID 0.77 NYLON 2'	1				

\* NOT ILLUSTRATED



---

---

---

---







FIGURE 11

## FastCat RZ

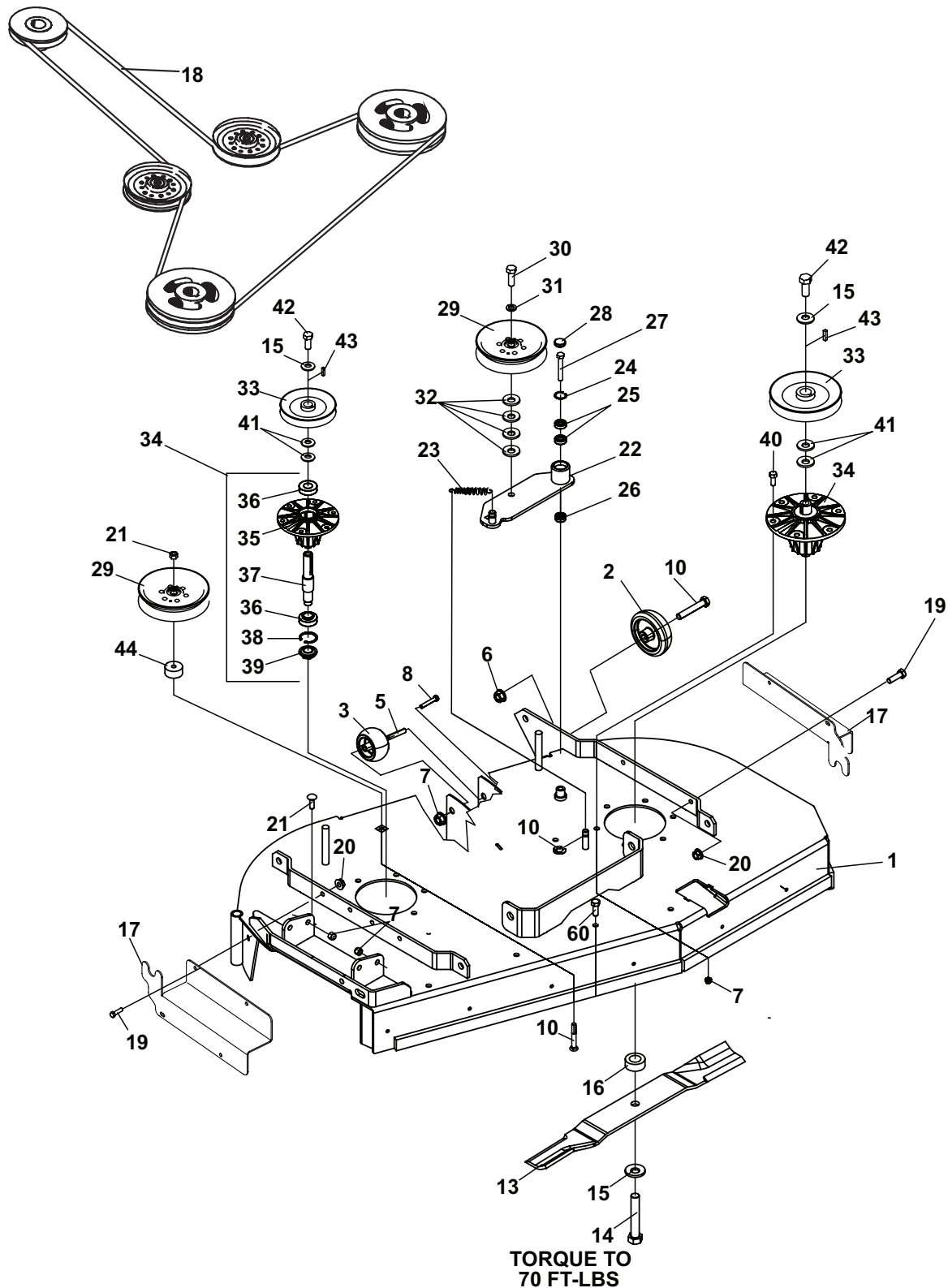
ITM	PART NO.	DESCRIPTION	QTY	ITM	PART NO.	DESCRIPTION	QTY
1	4171787	S-36 DECK W/LABELS-EU	1				
2	4171698.7	COVER-BELT 36	2				
3	112243-02	BLADE 18.00 OFFST	2				
4	4171231	S-ASSY SPINDLE OUTER	2				
5	4144947	PULLEY-SPINDLE	2				
6	128169	PULLEY, IDLER 5.50	2				
7	4146065	ARM, DECK IDLER ASSY	1				
		(INCLUDES ITEMS 28-30)					
8	2308133	SPRING-EXTENSION	1				
9	4164948	HOUSING-SPINDLE	2				
		(INCLUDES ITEMS 10 - 13)					
10	4167554-01	BEARING-SPINDLE SEALED	4				
11	2183070-02	SHAFT-SPINDLE	2				
12	64144-38	SNAP RING	2				
13	38315	NUT-SPINDLE	2				
14	64262-012	BLT-FLG HD 3/8-16 X 1-1/4	12				
15	64123-208	BLT-HEX 5/8-18X1.5	2				
16	64209-03	SPRING WASHER	4				
17	64164-12	KEY-1/4X1/4X1 SQ END	2				
18	64268-05	NUT-FL NYLON LOCK 1/2-13	1				
19	4152578-01	SPACER	1				
20	64123-31	BOLT-1/2-13X3 HEX	1				
21	64139-08	BOLT-5/16-18X3/4 WLF	4				
22	64123-187	BLT-HEX 5/8-18 X 3 3/4	2				
23	4118314	SPACER-BLADE 16MM	2				
24	64123-90	BOLT, 1/2-20X2 HEX	1				
25	64006-05	LOCKWSHR-HELICAL 1/2	1				
26	4128002	END CAP	1				
27	64270-02	BOLT-MET M10-1.5 X 30	1				
28	64144-40	SNAP RING	1				
29	4128004	BEARING	2				
30	4127999	SEAL	1				
31	64229-03	LOCKNUT-NYLON 3/8-16	19				
32	64163-67	WSHR-.516X1X12GA	4				
33	64141-6	FLANGE NUT, 5/16-18 NC ZP	4				
34	64144-36	E-CLIP	1				
35	64163-67	WSHR-.516X1X12GA	4				
36	4144212	BELT-36" CUTTERDECK	1				



# 42" SIDE DISCHARGE



FIGURE 12







## 42" SIDE DISCHARGE

### FastCat RZ

FIGURE 12

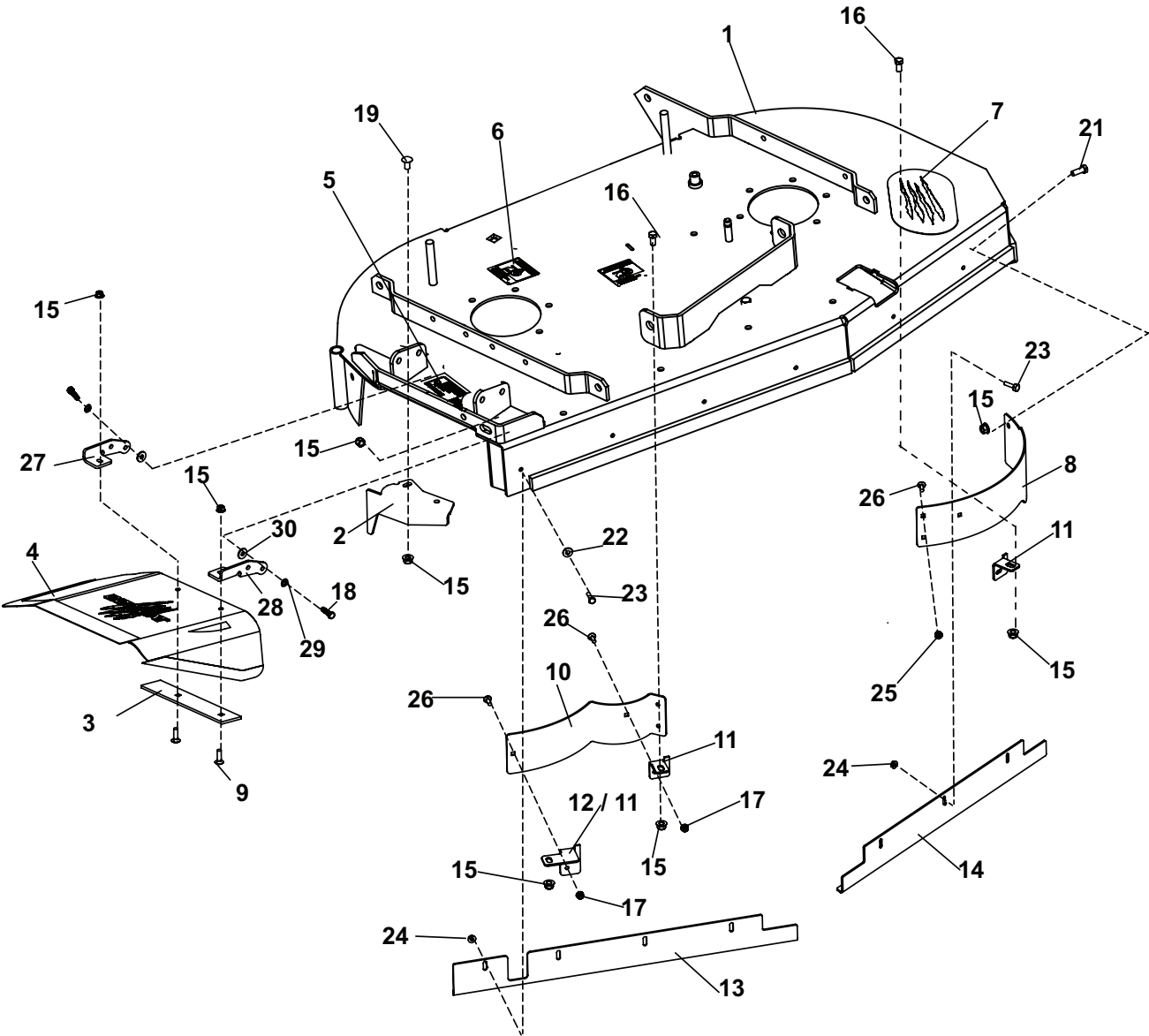
ITM	PART NO.	DESCRIPTION	QTY	ITM	PART NO.	DESCRIPTION	QTY
1	4171786	S-42 DECK W/LABELS	1	35	4164948	HOUSING-SPINDLE	2
2	4163332	ROLLER-ANTI-SCALP	1	36	4167554-01	BEARING-SPINDLE	4
3	2721512	ROLLER-5X2.75	1	37	2183070-02	SHAFT-SPINDLE	2
4	64123-50	BOLT-HEX 3/8-16X1	3	38	64144-38	SNAP RING	2
5	2720685	SPACER-ROLLER	1	39	38315	NUT-SPINDLE	2
6	64141-13	NUT-WLF 1/2-13	1	40	64262-012	BLT-FLG HD 3/8-16 X 1-1/4	12
7	64229-03	LOCKNUT-NYLON 3/8-16	17	41	64163-84	WASHER	4
8	64123-217	BLT-HEX 3/8-16X4-1/4	1	42	64123-208	BLT-HEX 5/8-18X1.5	2
9	64144-36	E-CLIP	1	43	64164-12	KEY	2
10	64123-31	BOLT-1/2-13X3 HEX	2	44	4152578-01	SPACER	1
11	64018-2	BLT-CRG 1/4-20X3/4	4				
12	64229-01	LOCKNUT-1/4-20 NYLON	2				
13	112243-03	BLADE 21.00 OFFST	2				
14	64123-187	BLT-HEX 5/8-18 X 3 3/4	2				
15	64209-03	SPRING WASHER	4				
16	4118314	SPACER-BLADE 16MM	2				
17	4171695.7	COVER-BELT	2				
18	4171677	BELT-42" CUTTERDECK	1				
19	64139-08	BOLT-5/16-18X3/4 WLF	4				
20	64141-6	NUT-WLF 5/16-18	4				
21	64268-05	NUT-FL NYLON LOCK 1/2-13	1				
22	4146065	ARM-DECK IDLER ASSY	1				
	(INCLUDES ITEMS 24-26)						
23	2308133	SPRING	1				
24	64144-40	SNAP RING	1				
25	4128004	BEARING-BALL	2				
26	4127999	SEAL	1				
27	64270-02	BOLT-MET HEX M10-1.5X30	1				
28	4128002	END CAP	1				
29	128169	PULLEY-IDLER 5.50	2				
30	64123-90	BOLT-1/2-20X2 HEX	1				
31	64006-05	LOCKWSHR-HELICAL 1/2	2				
32	64163-67	WSHR-.516X1X12GA	4				
33	4149197	PULLEY-6.25 DEEP GRVE	2				
34	4171231	S-ASSY SPINDLE OUTER	2				
	(INCLUDES ITEMS 35-39)						



BAFFLES, CHUTE & EDGES



FIGURE 13







## BAFFLES, CHUTE, & EDGES

FIGURE 13

### FastCat RZ

ITM	PART NO.	DESCRIPTION	QTY	ITM	PART NO.	DESCRIPTION	QTY
1	4171786	S-42 DECK W/LABELS	1				
	4171787	S-36 DECK W/LABELS					
2	4168085.2	BAFFLE-DISCHARGE	1				
3	4169851.7	PLATE-CHUTE	1				
4	4168131	CHUTE-PLASTIC	1				
5	4168695	LABEL-WARNING THROWN	1				
6	2000765	LABEL WARNING	3				
7	4168522	MAT-CLAW MARKS	1				
8	4167697.7	BAFFLE-FRONT LH 36"	1				
	4167803.7	BAFFLE-FRONT LH 42"	1				
9	64018-7	BLT-CRG 3/8-16X1-1/4	2				
10	4168516.7	BAFFLE-RIGHT FRONT, 36"	1				
	4168554.7	BAFFLE-RIGHT FRONT, 42"					
11	4168553.2	BRKT-BAFFLE MTNG, 36/42"	1				
12	4168515.2	BRKT-BAFFLE MNTG, RH	1				
		(USED ON 36")					
	4168487.2	BRKT-BAFFLE MNTG, RH					
		(USED ON 42" DECK)					
13	4168675.2	EDGE-LEADING RH 36"	1				
	4168677.2	EDGE-LEADING RH 42"					
14	4168676.2	EDGE-LEADING LH 36"	1				
	4166478.2	EDGE-LEADING LH 42"					
15	64268-03	NUT-FL NYLON LOCK 3/8-16	10				
16	64123-15	BLT-HEX 3/8-16X3/4	3				
17	64268-01	NUT-FL NYLON LOCK 1/4-2	3				
18	64123-16	BLT-HEX 3/8-16X1-1/4	2				
19	64018-23	BLT-CRG 3/8-16X3/4 SHRTNK	2				
20	64268-05	NUT-FL NYLON LOCK 1/2-13	2				
21	64123-50	BLT-HEX 3/8-16X1	1				
22	64163-55	WSHR .328X.75X14 GA	1				
23	64123-114	BLT-HEX 1/4-20X1	7				
24	64141-2	NUT-WLF 1/4-20	7				
25	64229-01	LOCKNUT-1/4-20 NYLON	4				
26	64018-2	BLT-CRG 1/4-20X3/4	7				
27	4169849.7	BRKT-CHUTE, REAR	1				
28	4169850.7	BRKT-CHUTE, FRONT	1				
29	4169871	WASHER-BELLVILLE,.382 ID	2				
30	4169895	WASHER-FRICTION,UHMW	2				



FIGURE 14

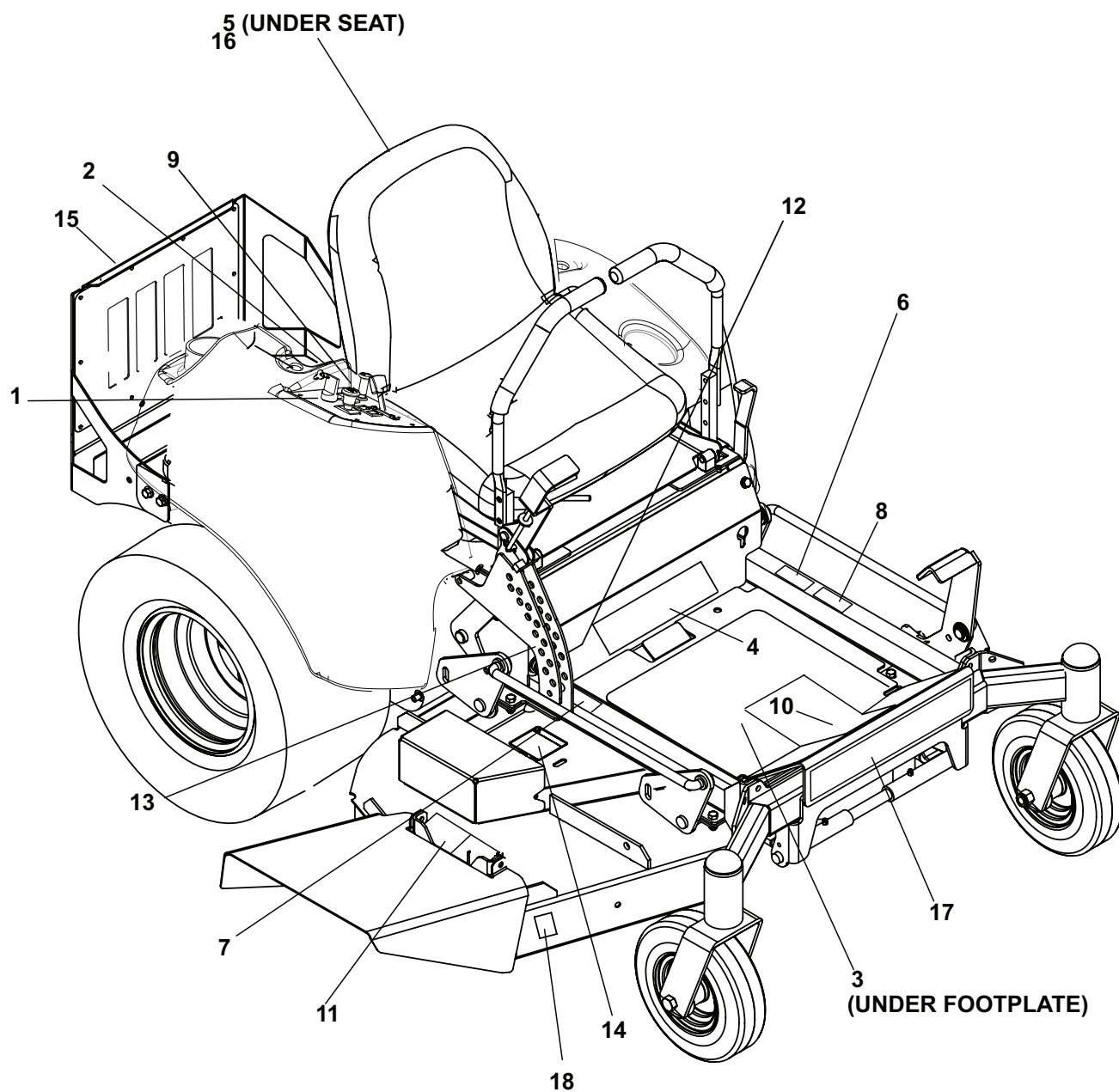






FIGURE 14

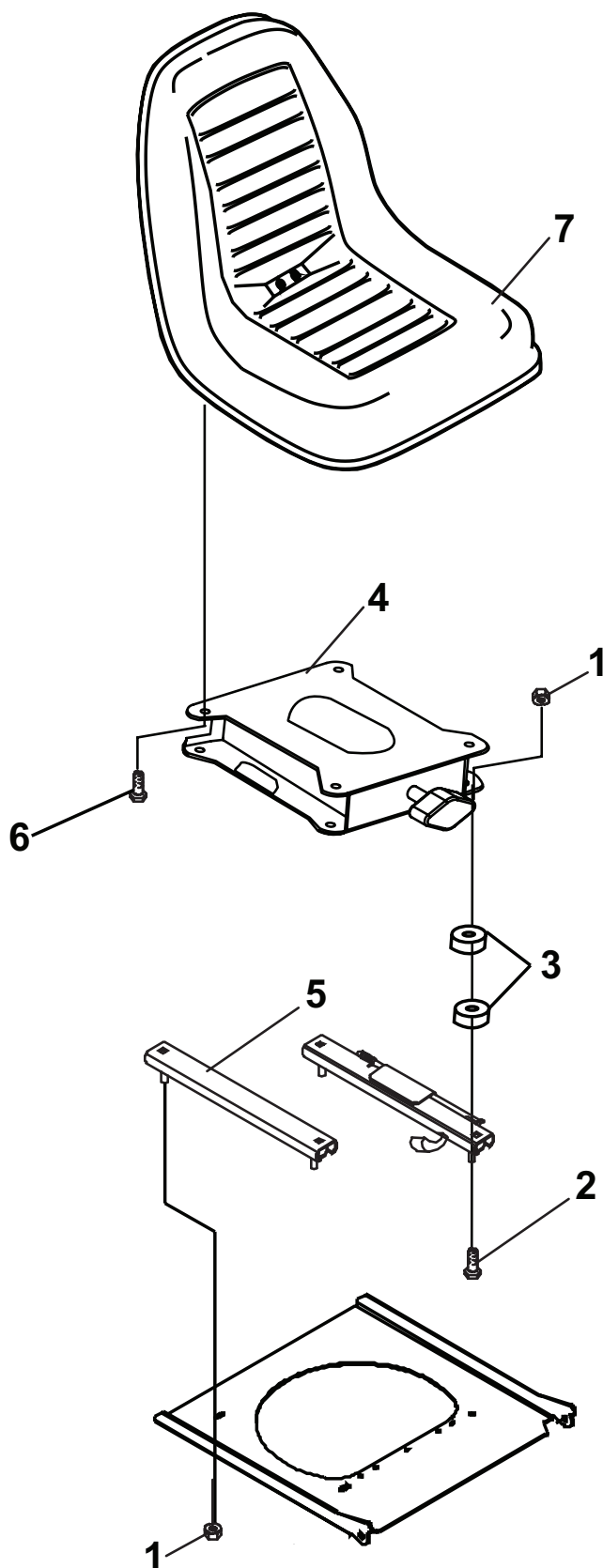
## FastCat RZ

ITM	PART NO.	DESCRIPTION	QTY	ITM	PART NO.	DESCRIPTION	QTY
1	4165662	LABEL-CONTROL PANEL	1				
2	4171729	LABEL-WARN FUEL PICT.-EU	2				
3*	2000655	LABEL-OPER, MANUAL-EU	1				
4	4164791	LABEL-FASTCAT RZ	1				
5	4168696	LABEL-WARN BATTERY	1				
6	4165616	LABEL-LH TRACTION	1				
7	4165615	LABEL-RH TRACTION	1				
8	4167203	LABEL-PARKING BRAKE	1				
9	4147617	LABEL-FUEL TANK VALVE	1				
10	4168691	LABEL-WARNING-EU	1				
11	4168695	LABEL-DANGER/WARNING	2				
12	4171335	LABEL-HOC INNER-EU	1				
13	4171334	LABEL-HOC OUTER-EU	1				
14	2000765	LABEL, WARNING-EU	3				
15	4164946	LABEL-BOB-CAT	1				
16	4133980	LABEL-MAINTENANCE	1				
17	4164406	LABEL-BOB-CAT	1				
18	4162912	LABEL-DECK SIZE 36"					
	4162913	LABEL-DECK SIZE 42"					

\*NOT ILLUSTRATED



FIGURE 15







## ACCESSORIES-SUSPENSION SEAT

FIGURE 15

### FastCat RZ

ITM	PART NO.	DESCRIPTION	QTY	ITM	PART NO.	DESCRIPTION	QTY
1	64141-6	NUT-WLF 5/16-18	8				
2	64262-019	BLT-FLG HD 5/16-18 X 1-3/4	2				
3	2720975-07	SPACER-NYLON 3/8IN	1				
4	4164679	SEAT-SUSPENSION	1				
(ITEMS 1-4 ARE CONTAINED IN KIT 970394)							
5		SLIDER-SEAT	2				
6		BLT-TORX	4				
7	4163499	SEAT ASSEMBLY	1				
(ITEMS 5 & 6 ARE INCLUDED ON 4163499)							



**SCHILLER GROUNDS CARE, INC.**  
**ONE BOB-CAT LANE**  
**P.O. BOX 469**  
**JOHNSON CREEK, WI 53038**  
**920-699-2000**  
**[www.schillergc.com](http://www.schillergc.com)**



©Schiller Grounds Care, Inc. 2010