

75-71234A
ELECTRIC DEFLECTOR KIT FOR SNOWBLOWER

MAN 4173033
Rev. B 02-2017



SCHILLER GROUNDS
CARE

ASSEMBLY INSTRUCTIONS



IMPORTANT MESSAGE

Thank you for purchasing this Schiller Grounds Care, Inc. product. You have purchased a world class product, one of the best designed and built anywhere.

This product comes with an Owner/Operator's Manual. The useful life and good service you receive from this product depends to a large extent on how well you read and understand this manual. Treat this product properly and adjust it as instructed, and it will give you many years of reliable service.

See a Schiller Grounds Care, Inc. dealer for any service or parts needed. Schiller Grounds Care, Inc. service ensures that you continue to receive the best results possible from Schiller Grounds Care, Inc. products. You can trust Schiller Grounds Care, Inc. replacement parts because they are manufactured with the same high precision and quality as the original parts.

Schiller Grounds Care, Inc. designs and builds its equipment to serve many years in a safe and productive manner. For longest life, use this product only as directed in the manual, keep it in good repair and follow safety warnings and instructions. You'll always be glad you did.

**Schiller Grounds Care, Inc.
One Bob-Cat Lane
Johnson Creek, WI 53038**

TABLE OF CONTENTS	FIGURES	PAGE
SAFETY.....		2
ASSEMBLY/SET-UP INSTRUCTIONS		3-7
TROUBLESHOOTING		8
TORQUE CHART		9
PARTS LIST		10-11

SAFETY

NOTICE !!!

Unauthorized modifications may present **extreme** safety hazards to operators and bystanders and could also result in product damage.

Schiller Grounds Care, Inc. strongly warns against, rejects and disclaims any modifications, add-on accessories or product alterations that are not designed, developed, tested and approved by Schiller Grounds Care, Inc.'s Engineering Department. Any Schiller Grounds Care, Inc. product that is altered, modified or changed in any manner not specifically authorized after original manufacture—including the addition of “after-market” accessories or component parts not specifically approved by Schiller Grounds Care, Inc.—will result in the Schiller Grounds Care, Inc. Warranty being voided.

Any and all liability for personal injury and/or property damage caused by any unauthorized modifications, add-on accessories or products not approved by Schiller Grounds Care, Inc. will be considered the responsibility of the individual(s) or company designing and/or making such changes. Schiller Grounds Care, Inc. will vigorously pursue full indemnification and costs from any party responsible for such unauthorized post-manufacture modifications and/or accessories should personal injury and/or property damage result.



This symbol means:
ATTENTION!
BECOME ALERT!

Your safety and the safety of others is involved.

Signal word definitions:

The signal words below are used to identify levels of hazard seriousness. These words appear in this manual and on the safety labels attached to Schiller Grounds Care, Inc. machines. For your safety and the safety of others, read and follow the information given with these signal words and/or the symbol shown above.

DANGER

DANGER indicates an imminently hazardous situation which, if not avoided, **WILL** result in death or serious injury.

WARNING

WARNING indicates a potentially hazardous situation which, if not avoided, **COULD** result in death or serious injury.

CAUTION

CAUTION indicates a potentially hazardous situation which, if not avoided, **MAY** result in minor or moderate injury. It may also be used to alert against unsafe practices or property damage.

CAUTION

CAUTION used without the safety alert symbol indicates a potentially hazardous situation which, if not avoided, **MAY** result in property damage.



Model

Serial Number

SCHILLER GROUNDS CARE, INC.
One Bob – Cat Lane
Johnson Creek, WI 53038

MODEL NUMBER: This number appears on sales literature, technical manuals and price lists.

SERIAL NUMBER: This number appears only on your model. It contains the model number followed consecutively by the serial number. Use this number when ordering parts or seeking warranty information. Located on engine deck top, left side.

ASSEMBLY/SET-UP INSTRUCTIONS

GENERAL NOTE: FRONT, REAR, RIGHT HAND AND LEFT HAND REFERENCES BELOW ARE WITH RESPECT TO AN OPERATOR AT THE CONTROLS.

TOOLS REQUIRED:

1 Ratchet
2 Wrenches 7/16", 1/2"
1 Wrench (for the nuts on the posts of the battery on the unit)
1 Socket 7/16"
1 Wire stripper

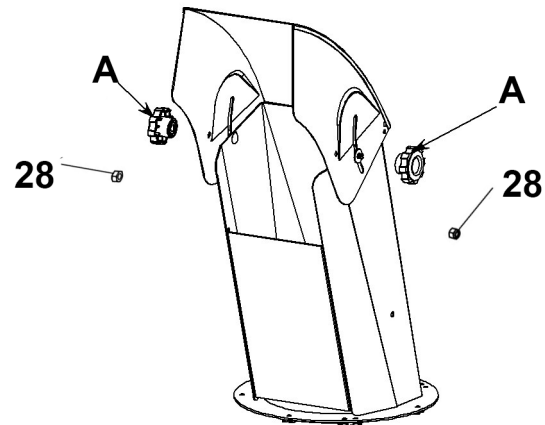
1 Flat screwdriver
1 Drill
1 Bit 9/32"
1 Square head screwdriver #2
1 Cross head screwdriver #2
1 Pair of snips

MOTOR ASSEMBLY:

1. Remove the two knobs (Item A) from the deflector and replace them with two 5/16" nylon insert lock nuts (Item 28).

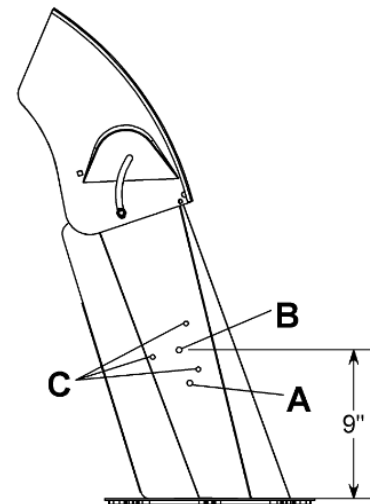
Leave the two 11/32" nylon washers under the insert lock nuts.

DO NOT TIGHTEN COMPLETELY so the deflector moves freely.



2. Drill holes B (\varnothing 11/32") and C (\varnothing 7/25") on the side of the chute with the provided drilling template. Use hole A (\varnothing 11/32") and the edges of the chute to position the drilling template.

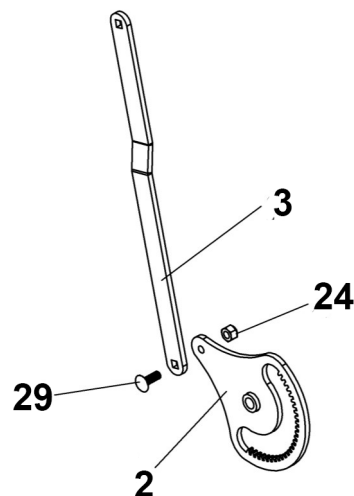
NOTE: Depending on the model of the blower, some chutes have hole B pre drilled. If so, use hole B to position the drilling template.



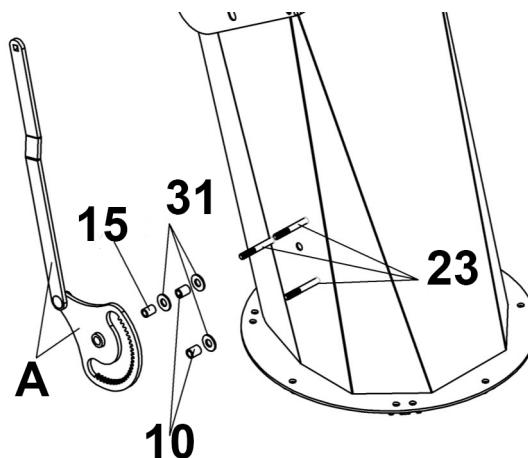
ASSEMBLY/SET-UP INSTRUCTIONS

3. Assemble the lever (Item 2) and the arm (Item 3) with one 1/4" X 3/4" hex bolt (Item 24) and one 1/4" nylon-insert locknut (Item 29).

DO NOT TIGHTEN COMPLETELY so the deflector moves freely.

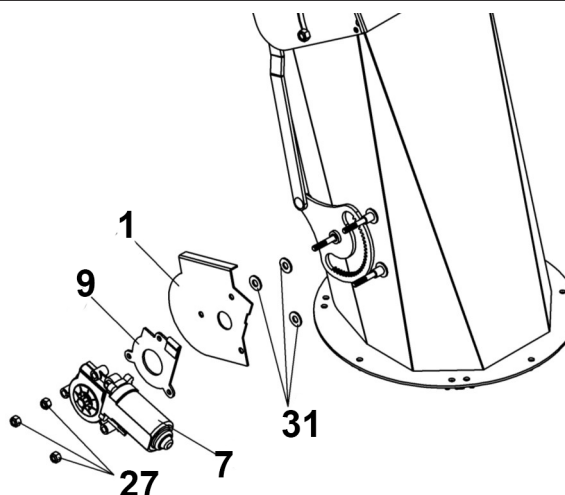


4. Insert three 1/4" X 2 hex bolts (Item 23) into the Ø9/32" hole drilled in the chute. Insert three 5/16" flat washers (Item 31).
5. Insert two spacers (Item 10) on the two back bolts.
6. Insert oil lite bushing (Item 15) on the front bolt.
7. Insert the lever assembly (Item A) on the oil lite bushing (Item 15).



8. Insert three 5/16" washers (Item 31) and the bracket (Item 1) on the bolts installed in Step 3.
9. Insert the gasket (Item 9) and the electric motor (Item 7) on the bolts also.
10. Secure the assembly with three 1/4" nylon-insert locknuts (Item 27).

Make sure the gasket is properly positioned on the motor.

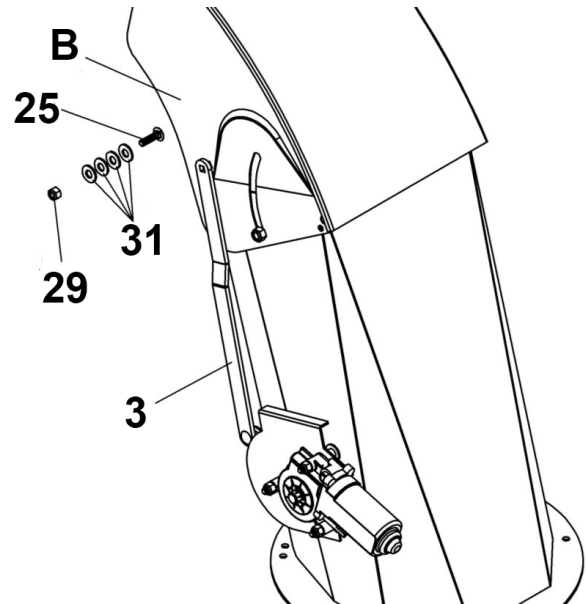


ASSEMBLY/SET-UP INSTRUCTIONS

11. Secure lever arm (Item 3) on the head of the chute (Item B) with one 1/4" x1" carriage bolt (Item 25), four 5/16" flat washers (Item 31) and the 1/4" nylon-insert locnut (Item 29) .

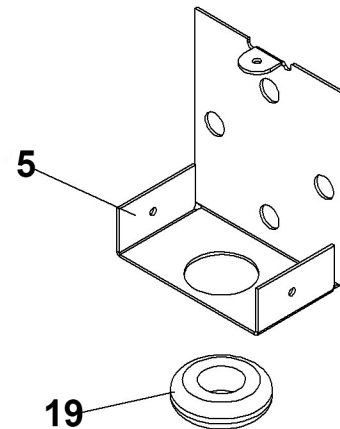
Note: The washers must be positioned between the head of the chute and the arm.

DO NOT TIGHTEN COMPLETELY so the deflector moves freely.

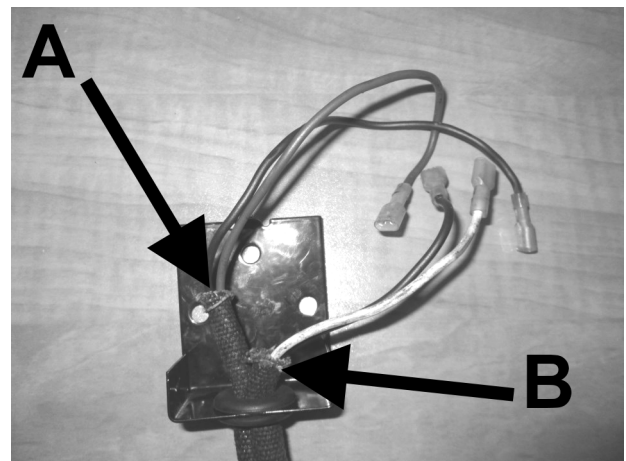


CONTROL BOX ASSEMBLY

12. Install the rubber grommet (Item 19) in the cover (Item 5).

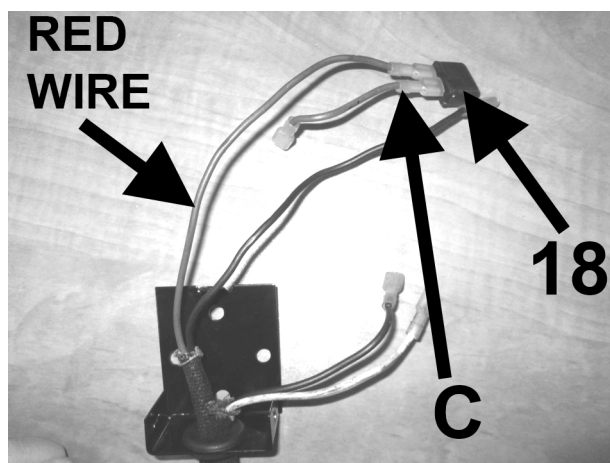


13. Pass wire assembly (Item 6) Wires A and B thru the rubber grommet. as pictured

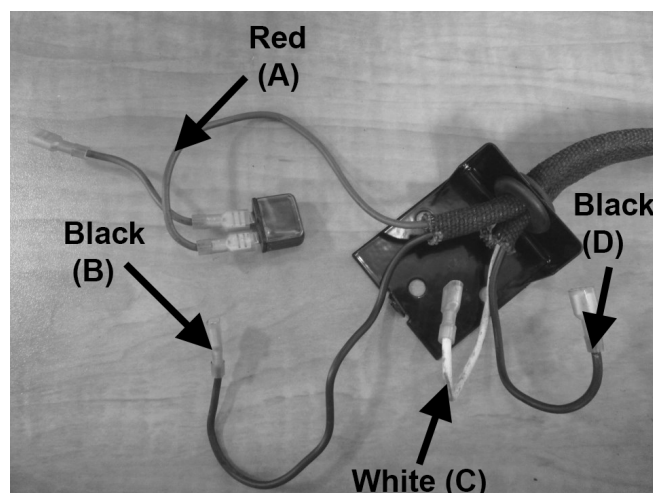
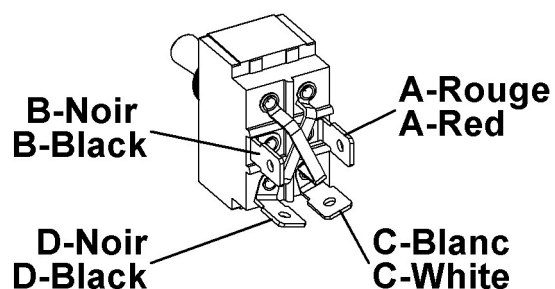


ASSEMBLY/SET-UP INSTRUCTIONS

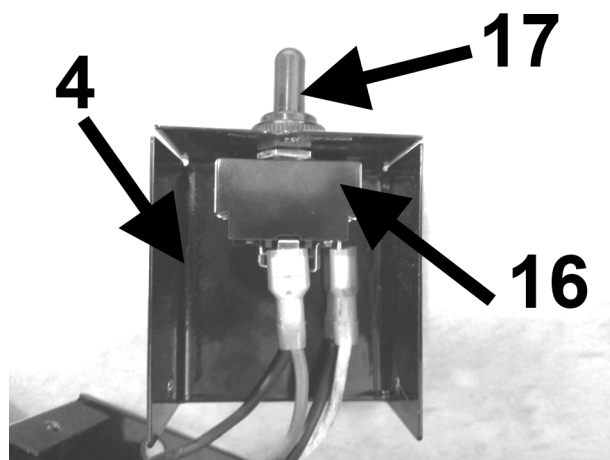
14. Plug the breaker (Item 18) on the red wire. Plug the small wire (Item C) on the breaker.



15. Install wires A, B, C and D into switch (Item 16) as shown below. **Be sure to position wire A & B properly to avoid short circuit.**



16. Install the switch (Item 16) into the box (Item 4). Secure with the rubber boot (Item 17). Tighten firmly.



ASSEMBLY/SET-UP INSTRUCTIONS

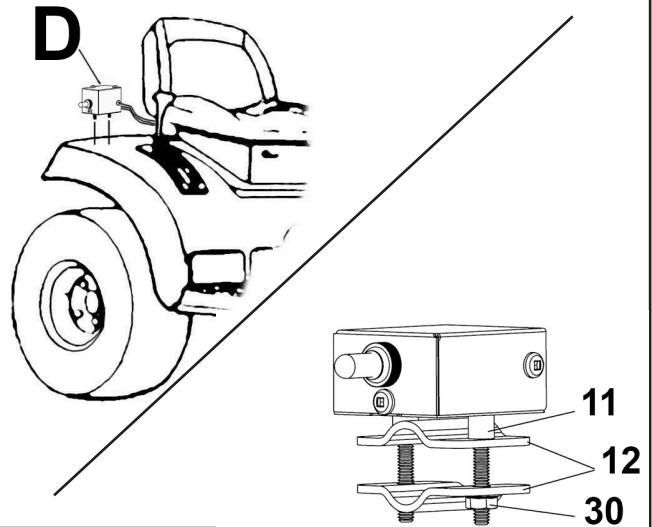
CONTROL BOX INSTALLATION

NOTE: Choose the ideal place to install the control box assembly (Item D).

We suggest placing it on the right fender of the tractor, close to the driver's seat, with the switches toward the outside.

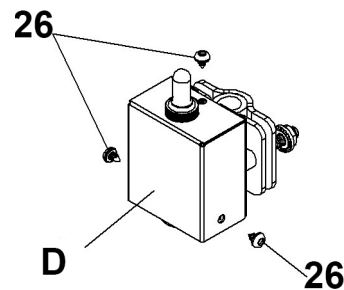
17. Secure the box (Item D) with two 1/4" X 1/2" bolts (Item 20) and two 1/4" flange nuts. (Item 30).

May also be secured elsewhere with spacers (Item 11) and support brackets (Item 12), one rubber spacer (Item 13) and two flange nuts (Item 30). Two other lengths of bolts (Items 21 & 22) have been provided for fitting purposes.



18. Secure Control box cover to box with three #8 x 1/4" screws. (Item 26)

It is also possible to install the switch without the control box in the dashboard or on the lever of the tractor's hydraulics.

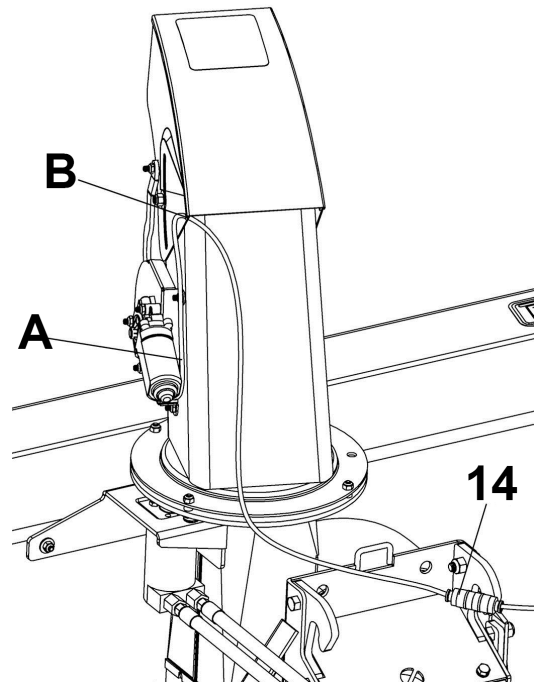


19. Turn the chute to its maximum towards the right.
20. Secure the wires of the deflector motor (item A) with a tie wrap around the motor.
21. Tie the wires with another tie wrap in the hole at the base of the deflector (item B) as shown.
22. Install the connector (item 14) by cutting the wires to the desired length one at a time. Make sure to install the same wire to the male pole and to the corresponding female pole.

It is recommended to place the connector as close as possible to the vehicle.

The reason for the connector is to facilitate dismounting of the snowblower.

23. Connect the red and black wires with a round eyelet on the battery's posts, The red wire on the positive post and the black wire on the negative post.



TROUBLESHOOTING

TROUBLESHOOTING

(For identification, see the parts breakdown)

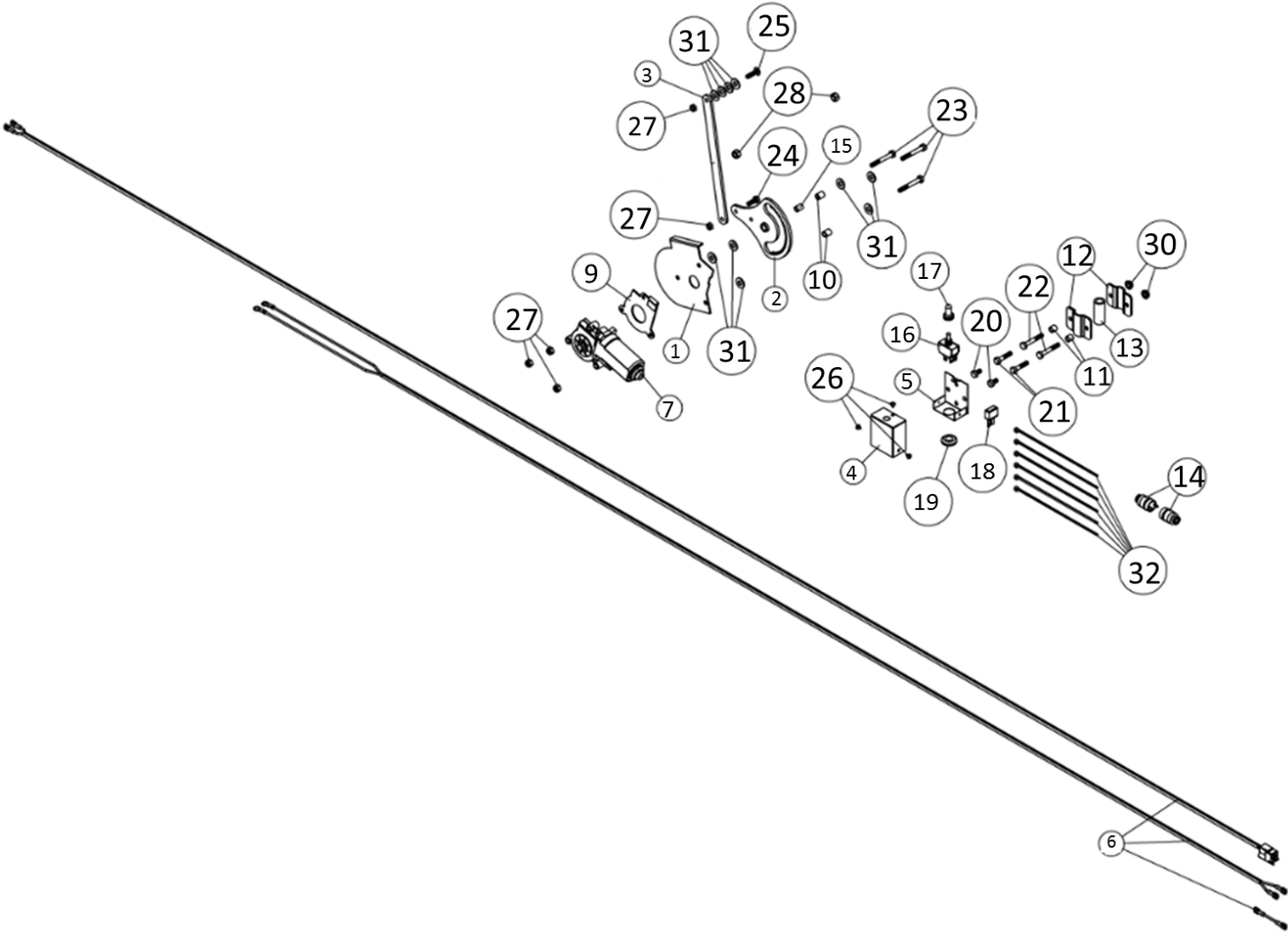
PROBLEM	POSSIBLE CAUSES	CORRECTIVE ACTION
Electric motor does not work.	Overheating of the motor.	These motors are equipped with internal protector. Wait 10 minutes before using.
The deflector works inopposite direction.	the Wires are inversed.	Change the black wire with the white-wire of the electric motor to switch.

TORQUE SPECIFICATION TABLE

SEE Grade No.	2				5				8 *			
BOLT HEAD IDENTIFICATION MARKS AS PER GRADE NOTE MANUFACTURING MARKS WILL VARY	TORQUE				TORQUE				TORQUE			
BOLT SIZE	FOOT POUNDS		NEW TON-METERS		FOOT POUNDS		NEW TON-METERS		FOOT POUNDS		NEW TON-METERS	
Inches Millimetre	Min. Max.		Min. Max.		Min. Max.		Min. Max.		Min. Max. Max.		Min. Max. Max.	
1/4" 6.35	5	6	6.8	8.13	9	11	12.2	14.9	12	15	16.3	30.3
5/16" 7.94	10	12	13.6	16.3	17	20.5	23.1	27.8	24	29	32.5	39.3
3/8" 9.53	20	23	27.1	31.2	35	42	47.5	57	45	54	61	73.2
7/16" 11.11	30	35	40.7	47.4	54	64	73.2	86.8	70	84	94.9	113.9
1/2" 12.7	45	52	61	70.5	80	96	108.5	130.2	110	132	149.2	179
9/16" 14.29	65	75	88.1	101.6	110	132	149.2	179	160	192	217	260.4
5/8" 15.88	95	105	128.7	142.3	150	180	203.4	244.1	220	264	298.3	358
3/4" 19.05	150	185	203.3	250.7	270	324	366.1	439.3	380	456	515.3	618.3
7/8" 22.23	160	200	216.8	271	400	480	542.4	650.9	600	720	813.6	976.3
1" 25.4	250	300	338.8	406.5	580	696	786.5	943.8	900	1080	1220.4	1464.5

METRIC BOLT TORQUE SPECIFICATIONS							
		COARSE THREAD			FINE THREAD		
Size Screw	Grade No.	Pitch (mm)	Foot Pounds	Newton-Meters	Pitch (mm)	Foot Pounds	Newton-Meters
M6	4T	1.00	3.6 - 5.8	4.9 - 7.9	-	-	-
	7T		5.8 - 9.4	7.9 - 12.7		-	-
	8T		7.2 - 10	9.8 - 13.6		-	-
M8	4T	1.25	7.2 - 14	9.8 - 19	1.00	12 - 17	16.3 - 23
	7T		17 - 22	23 - 29.8		19 - 27	25.7 - 36.6
	8T		20 - 26	27.1 - 35.2		22 - 31	29.8 - 42
M10	4T	1.50	20 - 25	27.1 - 33.9	1.25	20 - 29	27.1 - 39.3
	7T		34 - 40	46.1 - 54.2		35 - 47	47.4 - 63.7
	8T		38 - 46	51.5 - 62.3		40 - 52	54.2 - 70.5
M12	4T	1.75	28 - 34	37.9 - 46.1	1.25	31 - 41	42 - 55.6
	7T		51 - 59	69.1 - 79.9		56 - 68	75.9 - 92.1
	8T		57 - 66	77.2 - 89.4		62 - 75	84 - 101.6
M14	4T	2.00	49 - 56	66.4 - 75.9	1.50	52 - 64	70.5 - 86.7
	7T		81 - 93	109.8 - 126		90 - 106	122 - 143.6
	8T		96 - 109	130.1 - 147.7		107 - 124	145 - 168
M16	4T	2.00	67 - 77	90.8 - 104.3	1.50	69 - 83	93.5 - 112.5
	7T		116 - 130	157.2 - 176.2		120 - 138	162.6 - 187
	8T		129 - 145	174.8 - 196.5		140 - 158	189.7 - 214.1
M18	4T	2.00	88 - 100	119.2 - 136	1.50	100 - 117	136 - 158.5
	7T		150 - 168	203.3 - 227.6		177 - 199	239.8 - 269.6
	8T		175 - 194	237.1 - 262.9		202 - 231	273.7 - 313
M20	4T	2.50	108 - 130	146.3 - 176.2	1.50	132 - 150	178.9 - 203.3
	7T		186 - 205	252 - 277.8		206 - 242	279.1 - 327.9
	8T		213 - 249	288.6 - 337.4		246 - 289	333.3 - 391.6

PARTS BREAKDOWN



PARTS LIST

ELECTRIC DEFELCTIR KIT FOR CHUTE COMMERCIAL GRADE

Ref. Réf.	English description	Description française	Qty Qté.	Part # Pièce #
1	Bracket	Support	1	4173032-02
2	Lever	Levier	1	4173032-03
3	Arm	Bras	1	4173032-04
4	Box	Boîte	1	4173032-06
5	Box cover	Couvercle de la boîte	1	4173032-07
6	Wire assembly	Fils assemblés	1	4173032-12
7	Electric motor	Moteur électrique	1	4173032-13
8	Hardware bag	Sac de quincaillerie	1	-----
9	Gasket	Joint d'étanchéité	1	4173032-01
10	Spacer	Espaceur	2	4173032-05
11	Spacer	Espaceur	2	4173032-08
12	Support bracket	Fixation du support	2	4173032-09
13	Rubber spacer	Espaceur de caoutchouc	1	4173032-10
14	Connectors	Connecteurs	1	4173032-11
15	Oil lite bushing	Coussinet imprégné d'huile	1	4173032-14
16	Switch	Commutateur	1	4173032-15
17	Rubber boot	Capuchon de caoutchouc	1	4173032-16
18	Breaker	Disjoncteur	1	4173032-17
19	Rubber grommet	Oeillet de caoutchouc	1	4173032-18
20	Hex. bolt 1/4" n.c. x 1/2" GR5	Boulon hex. 1/4" n.c. x 1/2" GR5	2	64123-49
21	Hex. bolt 1/4" n.c. x 1 1/4" GR5	Boulon hex. 1/4" n.c. x 1 1/4" GR5	2	64123-80
22	Hex. bolt 1/4" n.c. x 1 3/4" GR5	Boulon hex. 1/4" n.c. x 1 3/4" GR5	2	4173032-19
23	Hex. bolt 1/4" n.c. x 2" GR5	Boulon hex. 1/4" n.c. x 2" GR5	3	64123-60
24	Carriage bolt 1/4" n.c. x 3/4 " GR5	Boulon hex 1/4" n.c. x 3/4" GR5	1	64123-89
25	Carriage bolt 1/4" n.c. x 1 " GR5	Boulon à carrosserie 1/4" n.c. x 1 " GR5	1	64018-42
26	Metal screw P.H. #8 x 1/4"	Vis à métal P.H. #8 x 1/4"	3	4173032-20
27	Nylon Insert lock Nut 1/4" n.c.	Écrou à garniture de nylon 1/4" n.c.	5	64229-01
28	Nylon Insert lock Nut 5/16" n.c.	Écrou à garniture de nylon 5/16" n.c.	2	64229-02
29	Nylon inser lock nut 1/4" n.c (thin)	Écrou à garniture de nylon 1/4" n.c. (mince)	2	4173032-21
30	Flange nut 1/4" n.c.	Écrou à bride 1/4" n.c.	2	64141-2
31	Flat washer 5/16" hole	Rondelle plate 5/16" trou	10	64163-70
32	Tie wrap 8"	Attache de nylon 8"	6	

Schiller Grounds Care, Inc.
One Bob-Cat Lane
Johnson Creek, WI 53038