



MODEL:

75-71305A

FLEX DECK MOWER -80"

S/N 0130 thru 0199

NOTE: THIS MANUAL ALSO COVER 75-71305 DECKS THAT HAVE BEEN UP-DATED WITH KIT 970966. UPDATED DECKS CAN BE VISABLLY IDENTIFIED WITH THE HINGED HOOD DESIGN.

MAN 4175398
Rev. A 08-2017

OPERATOR'S MANUAL 4175406



SCHILLER

**GROUNDS
CARE**

PARTS MANUAL

CALIFORNIA

Proposition 65 Warning

Diesel engine exhaust and some of its constituents are known to the State of California to cause cancer, birth defects and other reproductive harm.

⚠ WARNING

The engine exhaust from this product contains chemicals known to the State of California to cause cancer, birth defects or other reproductive harm.

Californie Proposition 65 Avertissement

Les échappements des moteurs diesel et certains de leurs composants sont reconnus par l'Etat de Californie pour être cancérigènes, provoquer des défauts congénitaux et d'autres dangers en matière de reproduction.

California Advertencia

⚠ AVERTISSEMENT

L'émission du moteur de ce matériel contient des produits chimiques que l'Etat de Californie considère être cancérigènes, provoquer des défauts congénitaux et d'autres dangers en matière de reproduction.

de la Proposición 65

El estado de California hace saber que los gases de escape de los motores diesel y algunos de sus componentes producen cáncer, defectos de nacimiento y otros daños en el proceso de reproducción humana.

⚠ ADVERTENCIA

El estado de California hace saber que los gases de escape de este producto contienen productos químicos que producen cáncer, defectos de nacimiento y otros daños en el proceso de reproducción humana.

CALIFORNIA

Proposition 65 Warning

Battery posts, terminals, wiring insulation, and related accessories contain lead and lead compounds, chemicals known to the State of California to cause cancer and birth defects or other reproductive harm.

WASH HANDS AFTER HANDLING.

FLEX DECK MOWER

IMPORTANT MESSAGE

Thank you for purchasing this Schiller Grounds Care, Inc. product. You have purchased a world class product, one of the best designed and built anywhere.

This product comes with an Owner/Operator's Manual. The useful life and good service you receive from this product depends to a large extent on how well you read and understand this manual. Treat this product properly and adjust it as instructed, and it will give you many years of reliable service.

See a Schiller Grounds Care, Inc. dealer for any service or parts needed. Schiller Grounds Care, Inc. service ensures that you continue to receive the best results possible from Schiller Grounds Care, Inc. products. You can trust Schiller Grounds Care, Inc. replacement parts because they are manufactured with the same high precision and quality as the original parts.

Schiller Grounds Care, Inc. designs and builds its equipment to serve many years in a safe and productive manner. For longest life, use this product only as directed in the manual, keep it in good repair and follow safety warnings and instructions. You'll always be glad you did.

Schiller Grounds Care, Inc.
One Bob Cat Lane
Johnson Creek, WI 53038-0469

| TABLE OF CONTENTS | FIGURES | PAGE |
|---|-----------------|--------|
| DESCRIPTION / SPECIFICATIONS / BELT CHART | | 4 |
| SAFETY | | 5-8 |
| PARTS SECTION | | 9 |
| MOWER DECALS | FIGURE 1 | 10, 11 |
| BELTS & DECK WELDMENTS ASSEMBLY | FIGURE 2 | 12, 13 |
| DECK 1 WELDMENT HARDWARE & COVERS | FIGURE 3 | 14, 15 |
| DECK 1 PULLEY & SPINDLE ASSY | FIGURE 4 | 16, 17 |
| DECK 1 WELDMENT IDLER ASSEMBLY | FIGURE 5 | 18, 19 |
| DECK 1 WELDMENT WHEEL YOKE ASSEMBLY | FIGURE 6 | 20, 21 |
| DECK 2 WELDMENT & HARDWARE | FIGURE 7 | 22, 23 |
| DECK 2 WELDMENT COVERS | FIGURE 8 | 24, 25 |
| DECK 2 PULLEY & SPINDLE ASSY | FIGURE 9 | 26, 27 |
| DECK 3 WELDMENT & HARDWARE | FIGURE 10 | 28, 29 |
| DECK 3 PULLEY & SPINDLE ASSY | FIGURE 11 | 30, 31 |
| DECK 3 TENSIONER ASSEMBLY | FIGURE 12 | 32, 33 |
| DECK 3 WELDMENT COVERS | FIGURE 13 | 34, 35 |
| DECK 3 TRAP DOORS | FIGURE 14 | 36, 37 |
| PUSH ARM ASSEMBLY | FIGURE 15 | 38, 39 |
| DECK 4 WELDMENT, HARDWARE, & COVERS | FIGURE 16 | 40, 41 |
| DECK 4 PULLEY & SPINDLE ASSY | FIGURE 17 | 42, 43 |
| EXTENDED CHUTE ASSEMBLY | FIGURE 18 | 44, 45 |
| REAR WHEEL ASSEMBLIES | FIGURE 19 | 46, 47 |
| PIVOTING WHEEL ASSEMBLIES | FIGURE 20 | 48, 49 |
| 9" X 3.5" WHEEL ASSEMBLY | FIGURE 21 | 50, 51 |
| DECK LIFT CYLINDER ASSEMBLY | FIGURE 22 | 52, 53 |
| HOSE ASSEMBLY AND LINK ROD | FIGURE 23 | 54, 55 |
| ANTI SCALP ROLLER ASSEMBLIES | FIGURE 24 | 56, 57 |
| MULCHING BAFFLE KIT (OPTIONAL) | FIGURE 25 | 58, 59 |
| WIRE HARNESS ASSEMBLIES | FIGURE 26 | 60 |
| WIRE HARNESS ASSEMBLY | FIGURE 27 | 61 |

DESCRIPTION

The 80" Flex Deck Mower is designed specifically for finish mowing applications. One of the unique benefits of the 80" Flex Deck Mower's cutting system is its ability to float over contours that are impossible for other wide-area mowers to cut accurately. The 80" Flex Deck Mower offers a high level of maneuverability.

Although the 80" Flex Deck Mower is an industrial-quality mower, do not attempt to use it to cut extremely long grass or areas heavy with brush or debris.

Before operating the 80" Flex Deck Mower, you must read and completely understand this manual as well as the power unit manual. In addition, you must also complete the appropriate maintenance schedules and perform a complete pre-operating checklist.

SPECIFICATIONS

| | | |
|--------------------------|---|------------|
| Cutting Width | 80" | |
| Mower Deck Configuration | (4) 21" Articulating Mower Decks | |
| Blades | (4) 21" High Lift-Standard | 4170730 |
| | (4) 21" Low Lift-Order Separately | Page 17 |
| | (4) 21" Mulching-Order Separately | Page 17 |
| | (4) 21" Low Lift Ultra-Order Separately | Page 17 |
| Blade Tip Speed | Max 16,575 FPM | |
| Mower Deck Height Range | 1" to 4-1/2" | |
| Operating Environment | Outdoor Use ONLY | |
| Mower Deck Gauge Wheels | (7) 9" X 3.5" Reliance DM | 4170724 |
| Mower Deck Belts | (1) Belt, Main Deck | 4175125 |
| | (1) Belt, Deck 1 | 4175332 |
| | (1) Belt, Drive | 4174756 |
| Mulching Baffle Kit | Optional Accessory-Order Separately | 75-71313 |
| 450 Harness Kit | Standard with Deck | 4175270-01 |
| 440 Harness Kit | Not Included-Order Separately | 4170728 |

NOTICE !!!

Unauthorized modifications may present **extreme** safety hazards to operators and bystanders and could also result in product damage.

Schiller Grounds Care, Inc. strongly warns against, rejects and disclaims any modifications, add-on accessories or product alterations that are not designed, developed, tested and approved by Schiller Grounds Care, Inc. Engineering Department. Any Schiller Grounds Care, Inc. product that is altered, modified or changed in any manner not specifically authorized after original manufacture—including the addition of “after-market” accessories or component parts not specifically approved by Schiller Grounds Care, Inc.—will result in the Schiller Grounds Care, Inc. Warranty being voided.

Any and all liability for personal injury and/or property damage caused by any unauthorized modifications, add-on accessories or products not approved by Schiller Grounds Care, Inc. will be considered the responsibility of the individual(s) or company designing and/or making such changes. Schiller Grounds Care, Inc. will vigorously pursue full indemnification and costs from any party responsible for such unauthorized post-manufacture modifications and/or accessories should personal injury and/or property damage result.



This symbol means:
ATTENTION!
BECOME ALERT!

Your safety and the safety of others is involved.

Signal word definitions:

The signal words below are used to identify levels of hazard seriousness. These words appear in this manual and on the safety labels attached to Schiller Grounds Care, Inc. machines. For your safety and the safety of others, read and follow the information given with these signal words and/or the symbol shown above.



DANGER indicates an imminently hazardous situation which, if not avoided, **WILL** result in death or serious injury.



WARNING indicates a potentially hazardous situation which, if not avoided, **COULD** result in death or serious injury.



CAUTION indicates a potentially hazardous situation which, if not avoided, **MAY** result in minor or moderate injury. It may also be used to alert against unsafe practices or property damage.

CAUTION used without the safety alert symbol indicates a potentially hazardous situation which, if not avoided, **MAY** result in property damage

Schiller Grounds Care, Inc.

One Bobcat Lane
Johnson Creek, WI 53038 U.S.A
Phone: 920-699-2000
Fax: 920-699-3683

MODEL NUMBER

SERIAL NUMBER

MODEL NUMBER: This number appears on sales literature, technical manuals and price lists.

SERIAL NUMBER: This number appears only on your mower. It contains the model number followed consecutively by the serial number. Use this number when ordering parts or seeking warranty information.

GENERAL SAFETY



This cutting machine is capable of amputating hands and feet and throwing objects. Failure to observe the following safety instructions could result in serious injury or death.

- Do not allow anyone to operate the 80" Flex Deck Mower without first reading and understanding this operator's manual in its entirety. Never allow children to operate the 80" Flex Deck Mower. Never operate the 80" Flex Deck Mower when children are present.
- Operate all controls from the operator's seat, (if so equipped). NO RIDERS.
- NEVER operate the deck with any safety covers removed!
- Work safely! Follow all safety rules! A careful operator is the best insurance against accidents!



- NEVER allow children to operate the deck.
- NEVER allow children near the deck.
- NEVER operate the machine around other people. Stop machine if anyone enters the area.



- Do not allow anyone to service or operate this machine while under the influence of alcohol or drugs.
- NEVER operate the deck without all safety covers properly installed and in good condition!
- ALWAYS stay well clear of blades and all moving parts while in operation!

PRE-OPERATION SAFETY



- NEVER allow anyone to operate the deck without proper instruction! Any and all operators must be instructed in and capable of the safe operation of the deck, its attachments, and controls!
- KNOW the controls and how to stop the deck quickly in an emergency!
- READ the entire manual before attempting to operate the deck! Only allow persons who have read and understand the entire operator's manual to operate the deck!
- Always wear relatively tight and belted clothing to avoid entanglement in moving parts. Wear sturdy rough-soled work shoes, as well as protective equipment for the eyes, hands, hearing and head. Never operate the deck or related equipment in bare feet, sandals, or sneakers. .
- Clear the cut area of stones, branches, balls or other debris that may be thrown and cause injury or damage.
- Verify that all safety decals are properly installed, visible, and legible.
- Always remove accumulated debris, fuel, or excess grease and oil from the drive unit engine area to avoid a fire hazard.
- Verify that the deck is properly mounted, set up, adjusted, and in good operating condition.
- Always perform the pre-operation equipment inspection and the appropriate maintenance schedule before operating the deck.
- Do not change the engine governor settings or over-speed the engine.

OPERATION SAFETY



- Be sure that the parking brake is set before attempting to start the engine.
- Operate only in daylight or good artificial light (min. 200 Lux).
- Operate the 80" Flex Deck Mower only from the operator seat.
- Always wear ear protection when operating the 80" Flex Deck Mower.
- Never cut more than 1/3 of the grass length at one time since this 80" Flex Deck Mower is a finish mower.
- Be sure that all auxiliary equipment switches (blades, lights, etc.) are in the OFF position before attempting to start the engine. holes and hidden hazards.

Be sure your drive unit is equipped with a ROPS (*Roll Over Protection System*), and be sure to wear your seat belt.

- Never operate the deck without the grass chute or mulching plate installed and secure.
- Never operate the deck unless all covers, shields, and safety devices are installed and secure.
- Never permit any person other than the operator to ride or board the drive unit or deck at any time.
Never allow riders!
- Never allow anyone near the drive unit or deck while operating. **Be sure that the area behind you is clear before operating in reverse!**
- Never allow anyone near or in the path of discharge.
- Never discharge in the direction of bystanders, vehicles, or buildings.
- Do not stop or start suddenly when going up or down a hill. Avoid operating on steep slopes.
- Do not mow in reverse unless absolutely necessary - and then only after careful and constant observation of entire area behind the

drive unit and deck.

- Use extreme care and maintain minimum ground speed when transporting on a hillside or over rough ground, and when operating close to ditches, fences, or water.
- Reduce speed on slopes and in sharp turns to minimize potential tipping or loss of control. Use caution when changing directions on slopes.
- Be alert for holes in the terrain as well as any other hidden hazard. Always drive slowly over rough ground.
- Disengage the blades, stop the engine, set the parking brake, and remove the key before dismounting the drive unit or making any adjustments to the deck.
- Stop the drive unit immediately upon striking any obstruction. Disengage the blades, turn off the engine, set the parking brake, remove the key, and inspect the drive unit and deck for any damage. Always repair any damage before resuming operation of the deck.
- Never adjust the mower deck height or lift the deck into transport position while the blades are engaged.
- Never engage the blades with the mower decks raised into transport position.
- Never place your hands or feet under the deck while the engine is running.
- Stay well clear of any and all moving parts.
- Keep hands and feet away from the blades at all times during operation.
- Take all possible precautions when leaving the drive unit and deck unattended: disengage the blades, turn off the engine, set the parking brake, and remove the key anytime you leave the drive unit and deck unattended.
- If your drive unit is equipped with headlights and hazard lights, always activate them whenever crossing or accessing any roadways, driveways, or parking lots. Watch for oncoming traffic.
- Do not allow extended running of drive unit engine indoors - **exhaust fumes are deadly.**

MAINTENANCE SAFETY



Fuel is explosive.

- Always use approved fuel containers.
- Never handle fuel by an open flame.
- Never use fuel as a solvent.
- Never fuel drive unit while unit is running.
- Never fuel drive unit indoors.
- Always clean up spilled fuel.
- Never smoke around fuel or while fueling.
- ALWAYS disengage the blades, turn off the engine, set the parking brake, and remove the key before performing any service to, maintenance on, or adjustments to the deck!
- Never perform maintenance on the deck when children are present.
- NEVER allow children on or around the deck.
- Always perform the appropriate maintenance schedule(s) in a timely fashion.
- Never allow anyone near any operator controls while performing adjustments, service or maintenance to the drive or the deck.
- Always use personal protection equipment such as eye, hand, head, and ear protection when performing any service or maintenance to the drive unit or deck.
- Keep the drive unit engine area free of accumulated debris, fuel, or excess grease and oil to reduce fire hazard.
- Keep the deck in good operating condition with all safety devices in place.
- Check the blades frequently. Verify that they are sharp, free of nicks and cracks, and securely fastened.
- Never run the machine in a closed area.
- Periodically tighten all bolts, nuts and screws. Verify that all fasteners are properly installed to ensure the drive unit and deck are in safe operating condition.

- Upon completing any maintenance or service function, verify that all safety guards and devices are properly installed before operating the drive unit or deck.
- Verify that all warning labels and decals are properly installed, visible, and legible.
- Always remove debris from the top and bottom of the deck after each use.

STORAGE SAFETY



- NEVER allow the extended running of any engine indoors - Exhaust gasses contain carbon monoxide, an odorless and deadly poison!
- NEVER allow children on or around the deck.
- NEVER store the deck where accessible by children.
- Never store the drive unit with fuel in the tank inside a building where fumes could reach and open flame or a spark.
- Allow the drive unit engine to cool before storing in an enclosed area.
- Remove all accumulated debris from the drive unit, and both the top and the bottom of the deck before storing.
- Sand and paint chipped or scratched areas and repaint them to prevent rust during storage.
- Lubricate all moving parts of the drive unit and deck to prevent rust during storage.
- ALWAYS lock the safety pins on the raised deck.

TRANSPORT SAFETY

- ALWAYS lock the safety pin on the raised deck.

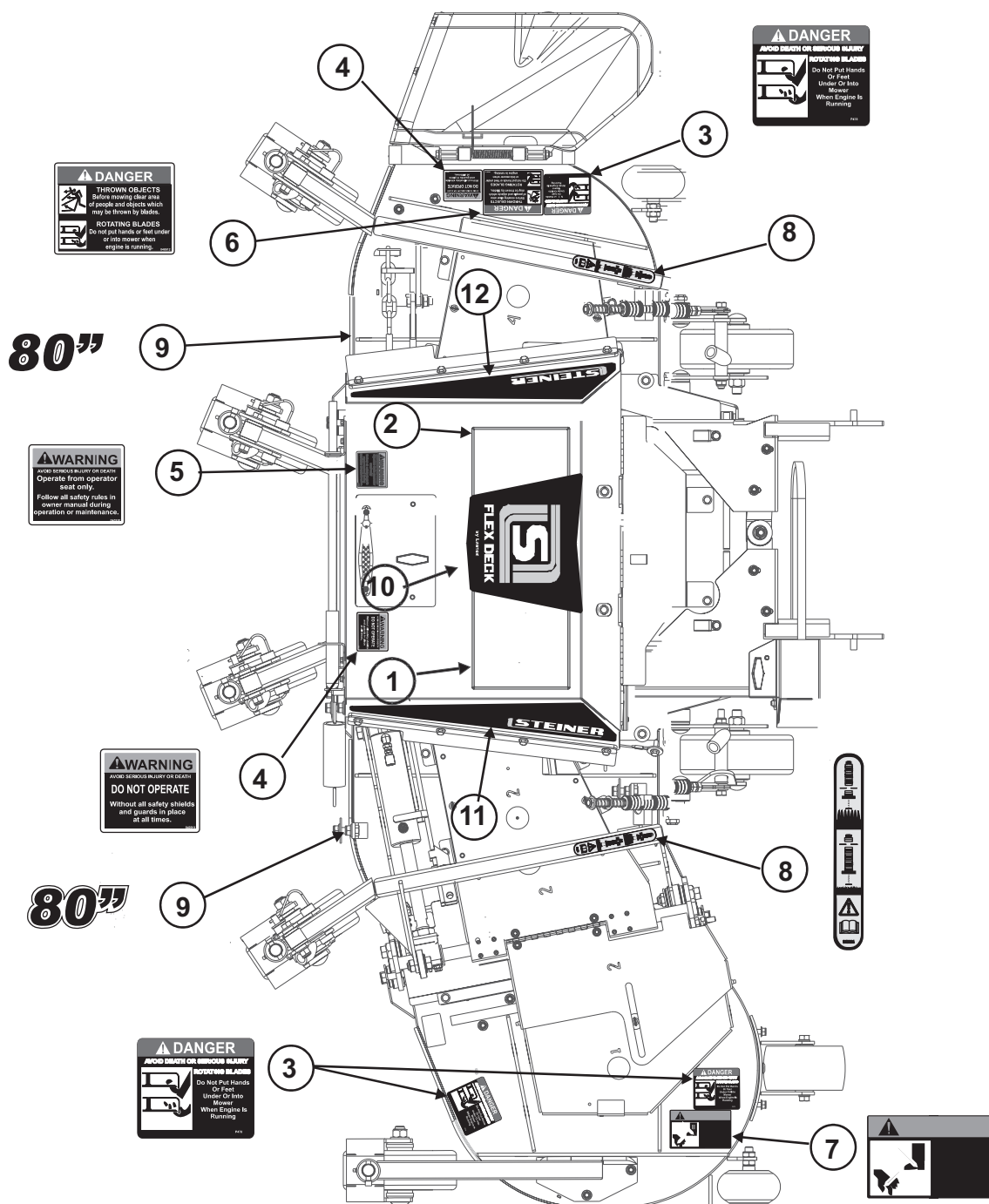


PARTS SECTION

MOWER DECALS

FIGURE 1

FLEX DECK MOWER



FLEX DECK MOWER

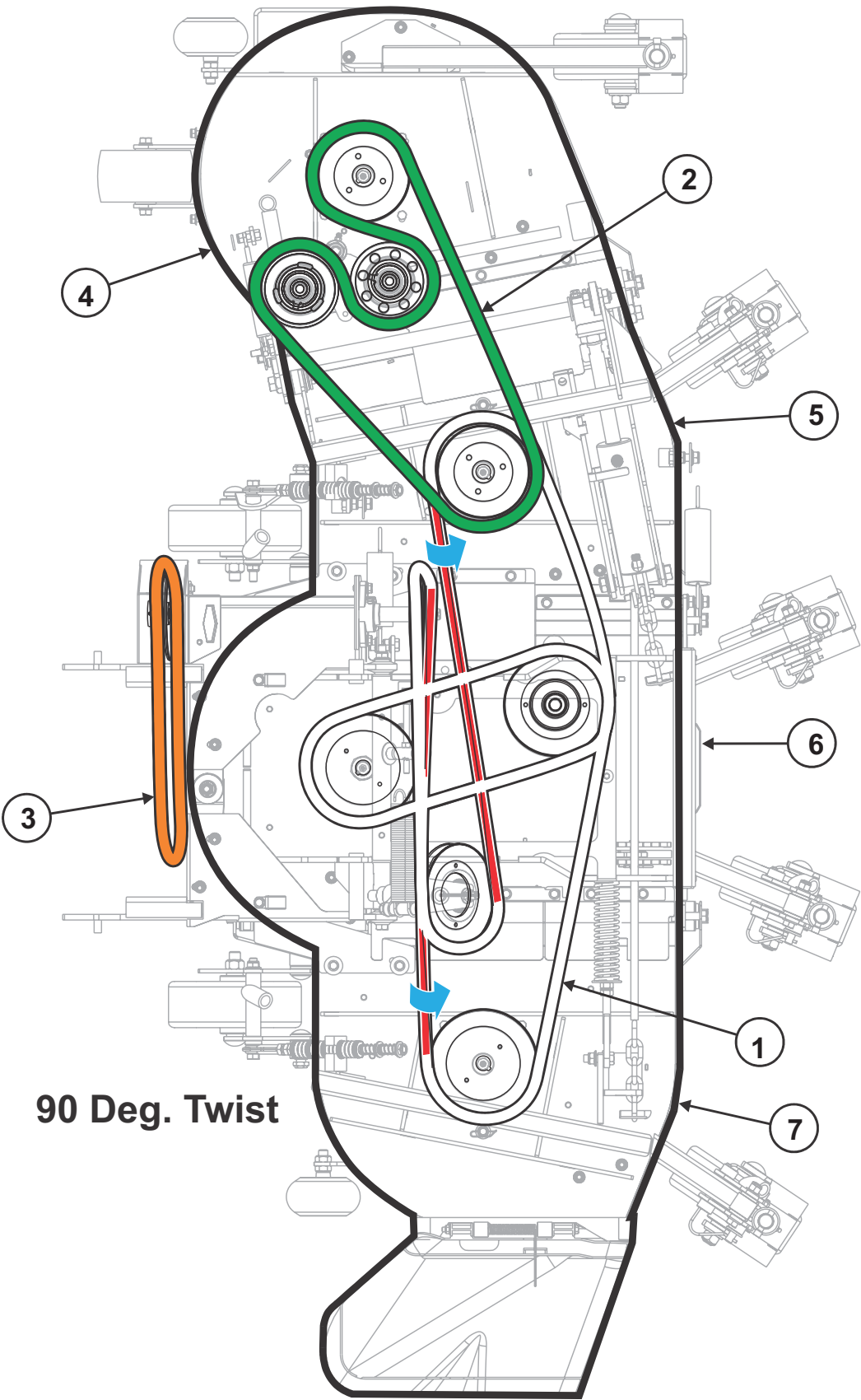
MOWER DECALS

FIGURE 1

| ITEM | PART NO. | DESCRIPTION | QTY |
|------|----------|-------------|-----|
|------|----------|-------------|-----|

| | | | |
|----|------------|-------------------------------------|---|
| 1 | 4175270-02 | DECAL, 80EFS2 BELT INSTALLATION | 1 |
| 2 | 4175270-03 | DECAL, BELT DIAGRAM 80EFS2 DECK | 1 |
| 3 | 4170775 | DECAL, DANGER - ROTATING BLADES | 3 |
| 4 | 4170776 | DECAL, WARNING OPERATE WITH GUARDS | 2 |
| 5 | 4170777 | DECAL, WARNING OPERATE FROM SEAT | 1 |
| 6 | 4170778 | DECAL, DANGER, THROWN OBJECTS/ARROW | 1 |
| 7 | 4170780 | DECAL, WARNING, OUTER DECKS | 1 |
| 8 | 4170781 | DECAL, EQUIPMENT, HEIGHT ADJ EF | 2 |
| 9 | 4175270-85 | DECAL, 80IN WHITE | 2 |
| 10 | 4175201 | DECAL, HOOD TOP, STEINER | 1 |
| 11 | 4175202 | DECAL, HOOD LEFT, STEINER | 1 |
| 12 | 4175203 | DECAL, HOOD RIGHT, STEINER | 1 |

FIGURE 2



FLEX DECK MOWER

BELTS & DECK WLDMNT ASSEMBLY

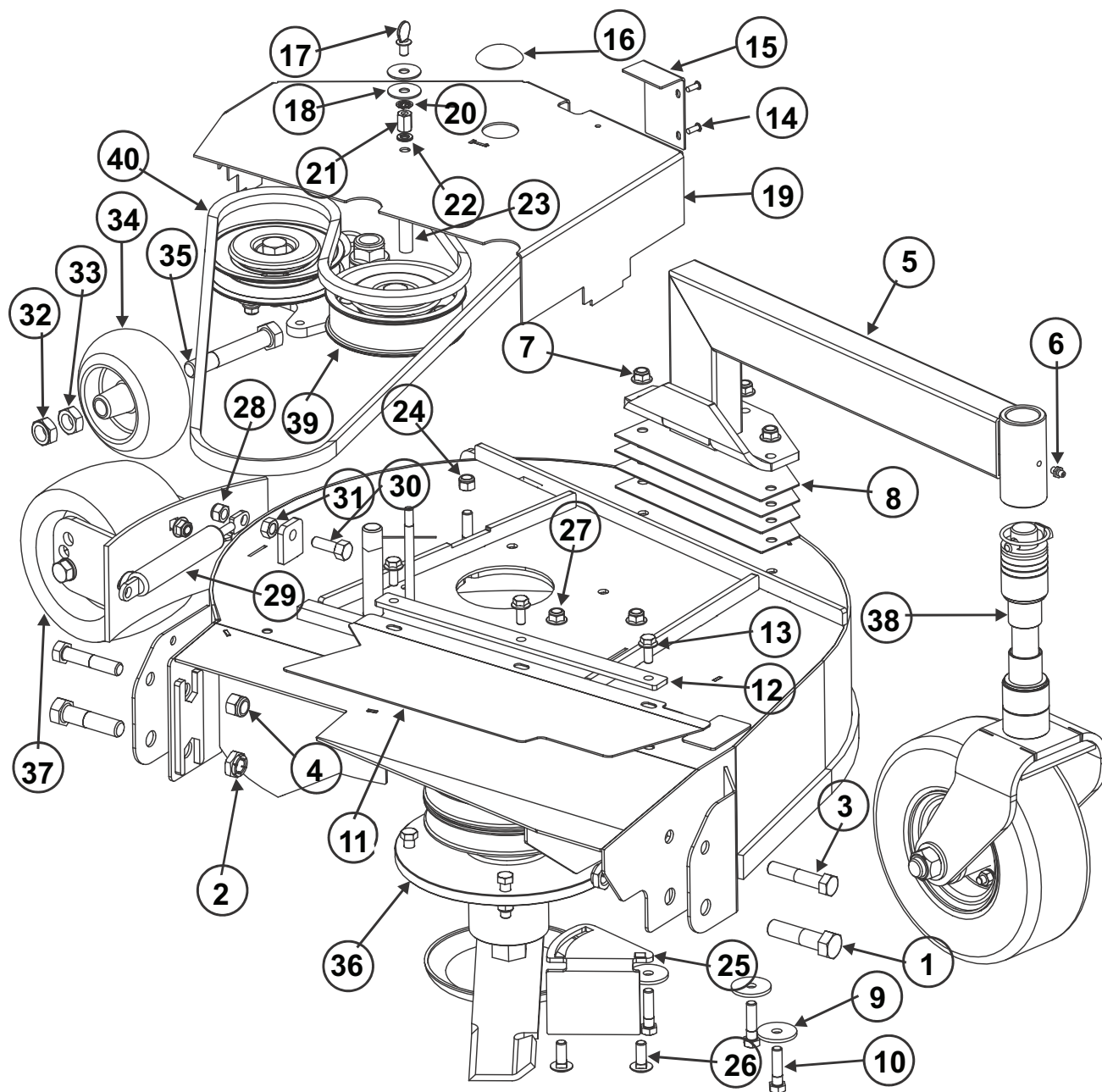
FIGURE 2

| ITEM | PART NO. | DESCRIPTION | QTY |
|------|------------|-------------------------|-----|
| 1 | 4175125 | BELT, 80EFS2 MAIN DECK | 1 |
| 2 | 4175332 | BELT, #1 DECK 47-5423 | 1 |
| 3 | 4174756 | BELT, BX43 DRIVE | 1 |
| 4 | 4170912 | DECK WELDMNT, #1 80EFS2 | 1 |
| 5 | 4170913 | DECK WELDMNT, #2 80EFS2 | 1 |
| 6 | 4175270-06 | DECK WELDMNT, #3 80EFS2 | 1 |
| 7 | 4170915 | DECK WELDMNT, #4 80EFS2 | 1 |

DECK 1 WLDMNT COVERS AND HARDWARE

FLEX DECK MOWER

FIGURE 3



FLEX DECK MOWER

DECK WLDMNT 1 COVERS AND HARDWARE

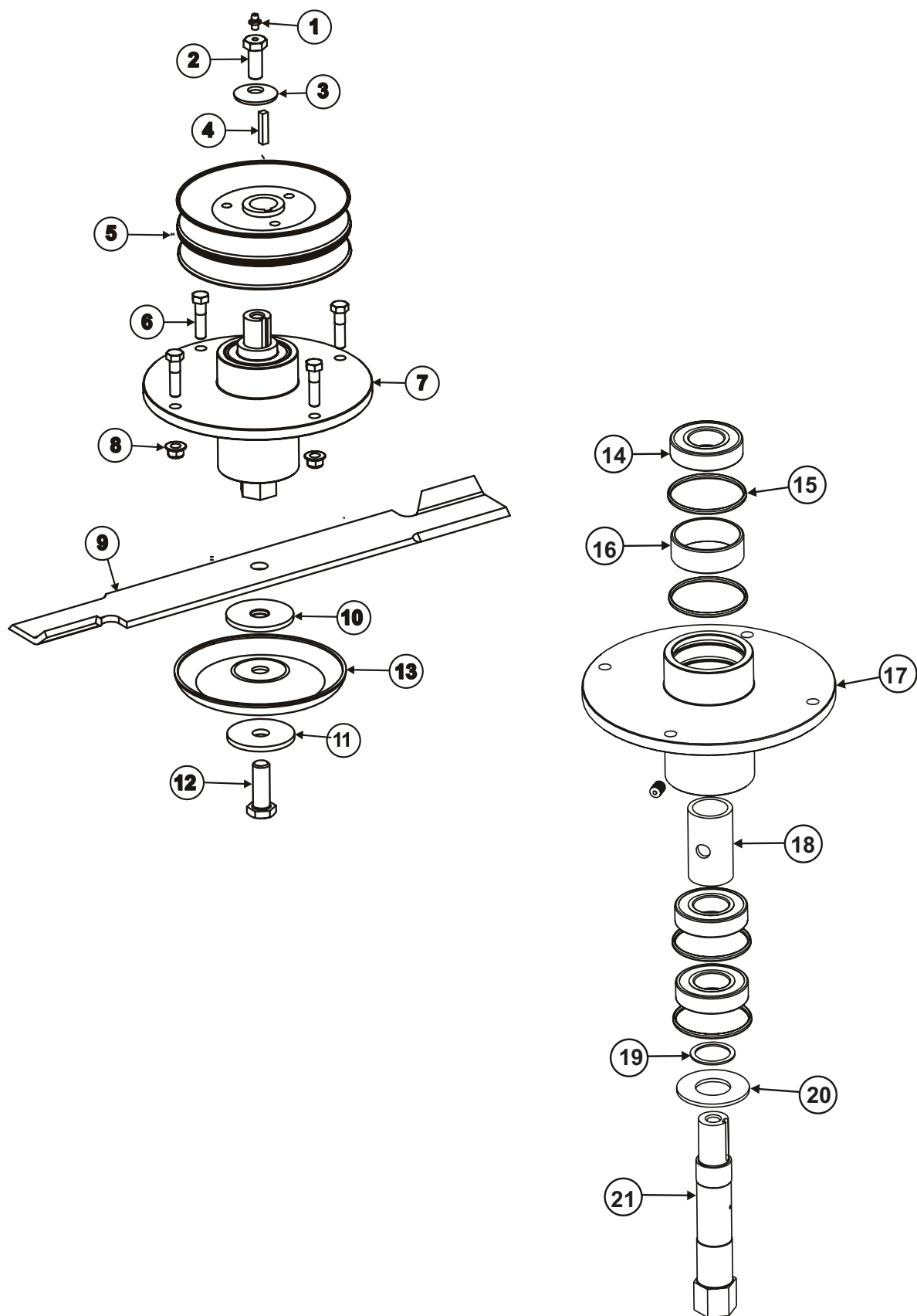
FIGURE 3

| ITEM | PART NO. | DESCRIPTION | QTY |
|------|------------|--|-----|
| 1 | 64123-168 | BOLT, 5/8-11 X 2 1/2" HEX HEAD GRADE 5 | 2 |
| 2 | 64236-04 | NUT, 5/8-11 FLEXLOC | 2 |
| 3 | 64123-72 | BOLT, 1/2-13 X 2 1/2" HEX HEAD GRADE 5 | 2 |
| 4 | 64229-05 | NUT, 1/2-13 NYL HEX LOCK | 2 |
| 5 | 4170735 | ROCKER WELDMENT, #1 80EFS | 1 |
| 6 | 85010N | FITTING, 1/4-28 STRAIGHT GREASE | 1 |
| 7 | 64268-03 | NUT, 3/8-16 FLANGED HEX NYLOCK | 3 |
| 8 | 4170920 | SHIM, 1/5 ROCKER | 4 |
| 9 | 4170921 | WASHER, 3/8 X 1-1/2 X 1/8 THK HARDENED | 3 |
| 10 | 64123-318 | BOLT, 3/8-16 X 1-1/2 HEX HEAD GRADE 8 | 3 |
| 11 | 4170761 | DOOR, #1 DECK TRAP | 1 |
| 12 | 4170762 | CLAMP PLATE, #1 DECK TRAP DOOR | 1 |
| 13 | 64123-54 | BOLT, 5/16-18X3/4 GRADE 5 FHCS SERRATED | 3 |
| 14 | 64215-03 | RIVET, 3/16 DIA X 3/8-1/2 GRIP RANGE POP | 2 |
| 15 | 4170763 | COVER PLATE | 1 |
| 16 | 4170772 | COVER, HOLE PLUG 1-3/8 | 1 |
| 17 | 4175270-63 | SCREW, 5/16-18X1/2 THUMB W/ SHOULDER | 3 |
| 18 | 4170773 | WASHER, THROTTLE FRICTION | 2 |
| 19 | 4170764 | COVER, #1 DECK | |
| 20 | 4175270-64 | NUT, 5/16 PUSH | 1 |
| 21 | 4175270-10 | NUT, 5/16-18 COUPLING, 11/16 LG | 1 |
| 22 | 64006-02 | WASHER, 5/16 SPLIT LOCK | 1 |
| 23 | 4175270-11 | SPACER, 1/2 ODX.334 IDX3-5/8 LG | 1 |
| 24 | 64229-03 | NUT, 3/8-16 HEX NYLOC | 1 |
| 25 | 4170767 | DEFLECTOR PLATE, #5 DECK GRASS | 1 |
| 26 | 64018-53 | BOLT, 3/8-16X1 CARRIAGE | 2 |
| 27 | 64268-03 | NUT, 3/8-16 FLANGED HEX NYLOCK | 2 |
| 28 | 64237-10 | NUT, M10-1.25 HEX NYLOK | 1 |
| 29 | 4170791 | DAMPENER, HAND CONTROL | 1 |
| 30 | 64206-08 | BOLT, M10-1.25 X 30MM HEX HEAD FT 8.8 | 1 |
| 31 | 64207-10 | NUT, M10-1.25 FREE ZINC PLATE | 1 |
| 32 | 64151-42 | NUT, 5/8-11 JAM NYL LOCK | 1 |
| 33 | 64141-45 | NUT, 5/8-11 JAM | 1 |
| 34 | 4170739 | WHEEL, ANTI-SCALP, 5-5/8" HOLE | 1 |
| 35 | 64123-234 | BOLT, 5/8-11 X 4 HEX HEAD GRADE 5 | 1 |
| 36 | | SPINDLE ASSEMBLY, #1 EFS SEE PGS 16-17 | 1 |
| 37 | 4175270-83 | ANTI-SCALP ROLLER ASSEMBLY, 100 | 1 |
| 38 | | WHEEL YOKE ASSEMBLY,SEE PGS 20-21 | 1 |
| 39 | | IDLER ASSEMBLY, 521 SEE PGS 18-19 | 1 |
| 40 | 4175332 | BELT, #1 DECK 10-1647 | 1 |

DECK 1 PULLEY & SPINDLE ASSY

FLEX DECK MOWER

FIGURE 4



FLEX DECK MOWER

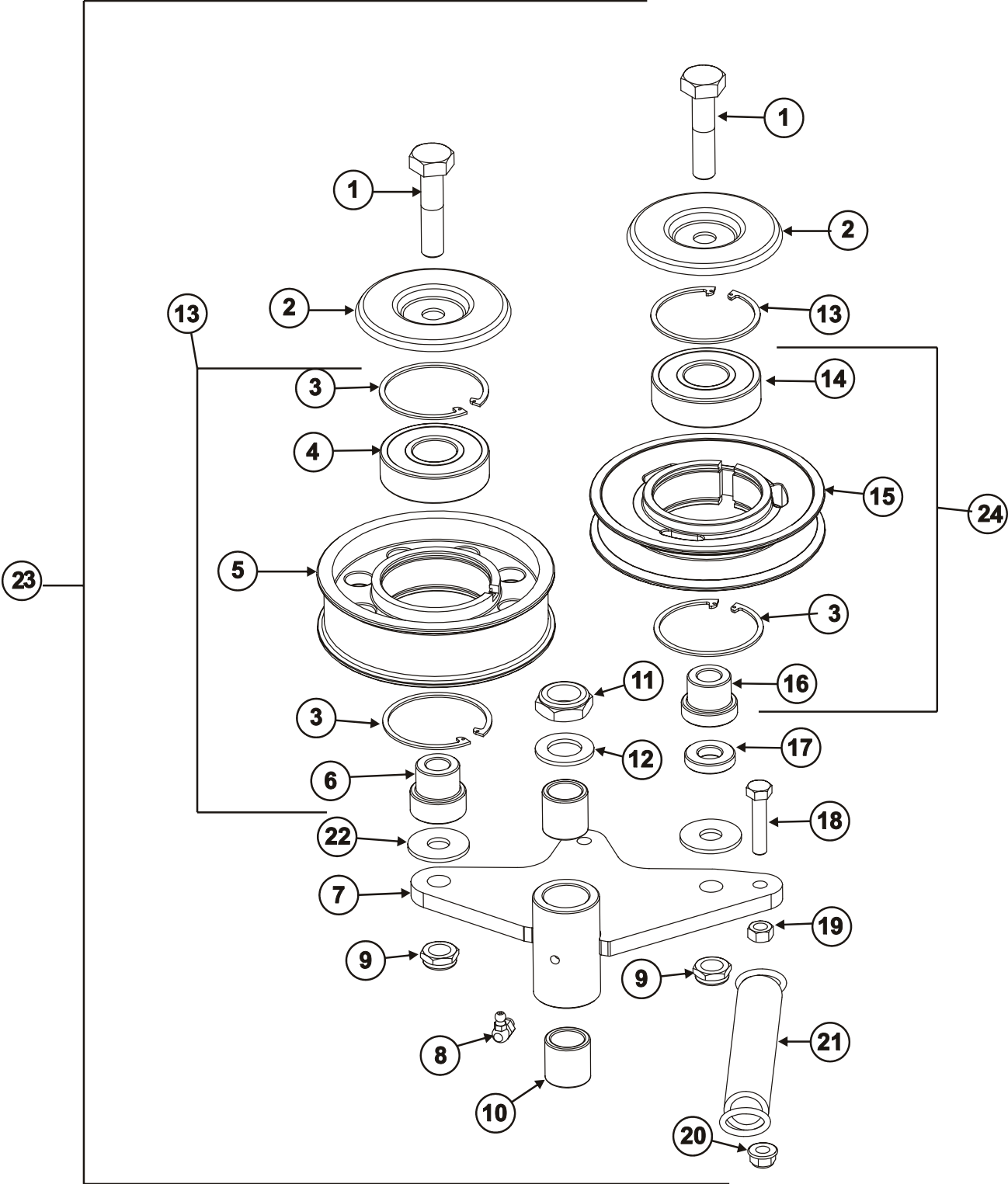
DECK 1 PULLEY & SPINDLE ASSY

FIGURE 4

| ITEM | PART NO. | DESCRIPTION | QTY |
|------|----------|-------------|-----|
|------|----------|-------------|-----|

| | | | |
|----|-----------|--|---|
| 1 | 85010N | FITTING, 1/4-28 STRAIGHT GREASE | 1 |
| 2 | 4170740 | BOLT, SPINDLE SINGLE PULLEY | 1 |
| | | MAXIMUM TORQUE: 57 FT-LBS | |
| | | | |
| 3 | 4170930 | WASHER, 1/2" PLAIN BELLEVILLE | 1 |
| 4 | 64164-03 | KEY, 1/4" SQUARE X 1 1/2" LONG | 1 |
| 5 | 4170792 | SHEAVE, DOUBLE - MOWER DECK | 1 |
| 6 | 64123-70 | BOLT, 3/8-16 X 1 1/2" HEX HEAD GRADE 5 | 4 |
| 7 | | SPINDLE ASSEMBLY, ZT CAST | 1 |
| | | SEE ITEMS 14-21 | |
| 8 | 64268-03 | NUT, 3/8-16 FLANGED HEX NYLOC | 4 |
| 9 | 4170730 | BLADE, 21" X 2 1/2" X 1/4" HIGH LIFT | 1 |
| 10 | 4170830 | WASHER, 2 1/2" X 11/16" X 3/16" NYLON | 1 |
| 11 | 64163-120 | WASHER, 2 1/2" OD X 5/8" ID X 3/16" STD FLAT | 1 |
| 12 | 64123-211 | BOLT, 5/8-18 X 1 3/4" HEX HEAD GRADE 5 | 1 |
| | | TORQUE TO 75 FT.LBS | |
| | | | |
| 13 | 4170794 | BLADE DISC, ANTI-SCALP | 1 |
| 14 | 4170769 | BEARING, 6206-2NSE | 3 |
| 15 | 4170766 | O-RING, 2 1/2" ID X 2 3/4" OD | 4 |
| 16 | 4170795 | SPACER, BEARING HOUSING | 1 |
| 17 | 4170749 | SPINDLE HOUSING, ZT- COMMON CORE | 1 |
| 18 | 4170796 | SPACER, SPINDLE BEARING HOUSING | 1 |
| 19 | 4170927 | WASHER, 1.50" X 1.185" X 16GA | 1 |
| 20 | 4170926 | WASHER, 2.435" X 1.185" X 11GA | 1 |
| 21 | 4170748 | SHAFT, BLADE SPINDLE ZT CAST | 1 |
| | | | |

FIGURE 5



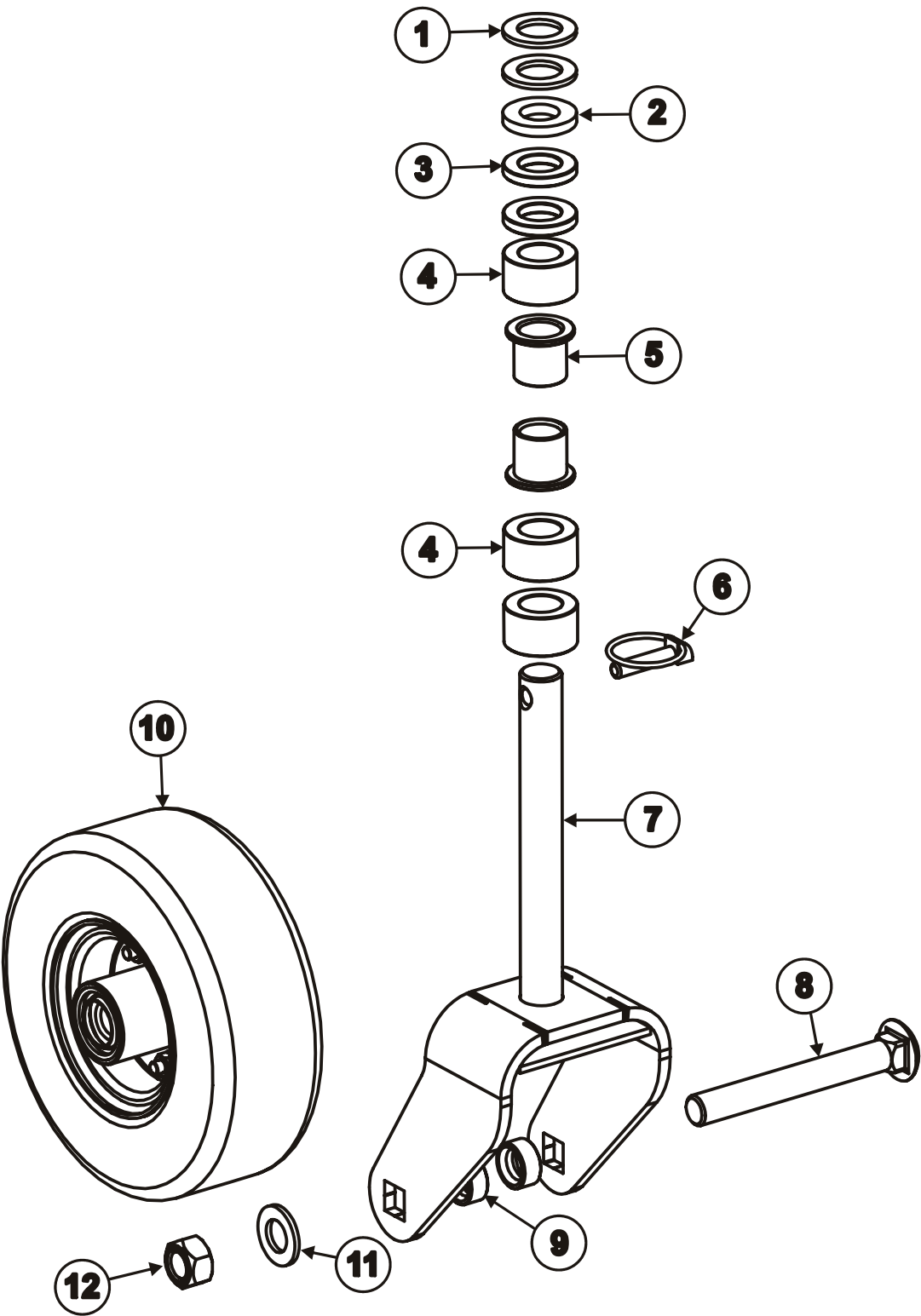
FLEX DECK MOWER

DECK 1 WLDMNT IDLER ASSY

FIGURE 5

| ITEM | PART NO. | DESCRIPTION | QTY |
|------|-----------|--|-----|
| 1 | 64123-259 | BOLT, 1/2-13 X 2 1/4" HEX HEAD GRADE 5 | 2 |
| 2 | 4170798 | WASHER, WATER SHED PULLEY | 2 |
| 3 | 64144-45 | RING, 62MM IR DIN #472 RETAINING | 4 |
| 4 | 4170765 | BEARING, SPINDLE TOP 6305 RS | 1 |
| 5 | 4170800 | PULLEY, 5" OD IDLER, FLAT | 1 |
| 6 | 4170801 | BOSS, IDLER PULLEY STANDOFF | 1 |
| 7 | 4170802 | WELDMENT, 521E IDLER PLATE | 1 |
| 8 | 35027N | FITTING, GREASE 90 DEG. 1/4-28 | 1 |
| 9 | 64151-37 | NUT, 1/2-13 HALF NYLON LOCK | 2 |
| 10 | 4170752 | BUSHING, 3/4" ID X 1" OD X 1" OIL | 2 |
| 11 | 64151-36 | NUT, 3/4-10 HALF NYLOC | 1 |
| 12 | 64163-06 | WASHER, 3/4" AN YEL/CAD | 1 |
| 13 | 4170799 | PULLEY ASSEMBLY 5" OD IDLER FLAT | 1 |
| | | (INCLUDES ITEMS 3-6) | |
| 14 | 4170765 | BEARING, SPINDLE TOP 6305 RS | 1 |
| 15 | 4170804 | PULLEY, 5" OD IDLER, V GROOVE | 1 |
| 16 | 4170805 | BOSS, IDLER PULLEY STANDOFF | 1 |
| 17 | 4170918 | SPACER, 1/4" THK DECK HEIGHT | 1 |
| 18 | 64123-319 | BOLT, 5/16-18 X 1 1/2" HEX HEAD | 1 |
| 19 | 64025-02 | NUT, 5/16-18 HEX | 1 |
| 20 | 64229-02 | NUT, 5/16-18 FLANGED HEX NYLOCK | 1 |
| 21 | 4170806 | SPRING, 1" X 7" EXTENSION | 1 |
| 22 | 4170929 | WASHER, 1/2" STANDARD FLAT | 2 |
| 23 | 4170797 | IDLER ASSEMBLY, 521 | 1 |
| | | (INCLUDES ITEMS 1-22) | |
| 24 | 4170803 | PULLEY ASSEMBLY, 5" IDLER, V GROOVE | 1 |
| | | (INCLUDES ITEMS 13-16) | |

FIGURE 6



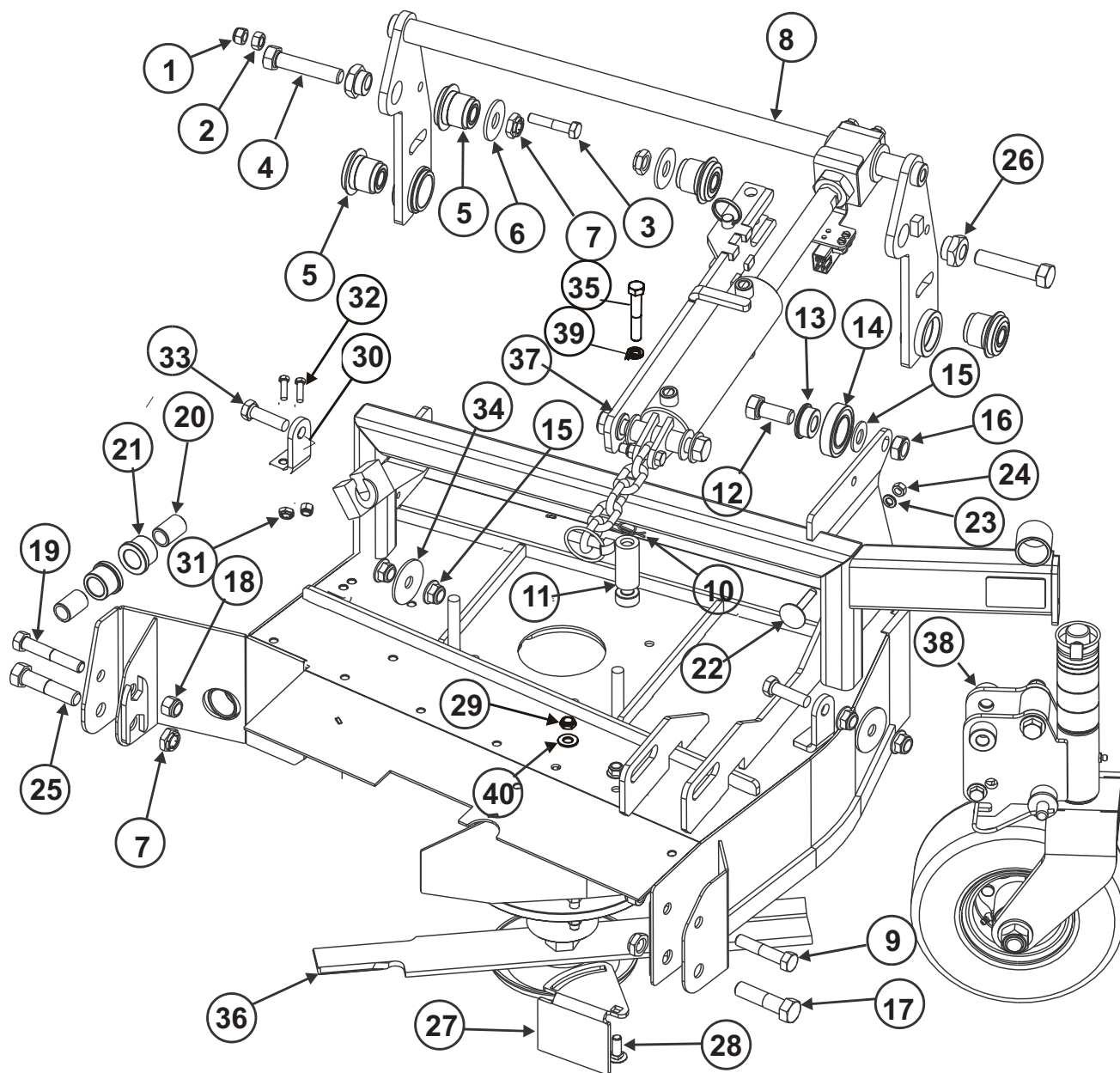
FLEX DECK MOWER

DECK 1 WHEEL YOKE ASSY

FIGURE 6

| ITEM | PART NO. | DESCRIPTION | QTY |
|------|-----------|---|-----|
| 1 | 64163-84 | WASHER, 1-1/16" X 1-3/4" X 1/8" ZNC | 2 |
| 2 | 4170759 | SPRING, WHEEL YOKE 1-0 URETHANE | 1 |
| 3 | 64163-07 | SPACER, 1" ID X 1-3/4" OD X 1/4" | 2 |
| 4 | 4170751 | SPACER, 1 3/4" OD X 1 1/16" ID X 1" | 3 |
| 5 | 4170768 | BUSHING, 1" ID X 1-1/4" OD X 1-1/4" FLANGED | 2 |
| 6 | 4170925 | PIN, 3/8" DIA LYNCH LOCKING | 1 |
| 7 | 4170808 | YOKE WELDMENT, EFLW 9 IN | 1 |
| 8 | 64018-52 | BOLT, 3/4-10 X 6" CARRIAGE GRADE 5 | 1 |
| 9 | 4170753 | SPACER, 3/4" AXLE BOLT | 2 |
| 10 | 4170724 | WHEEL ASSEMBLY, 9X3.5 RELIANCE DM | 1 |
| 11 | 64163-110 | WASHER, 3/4" SAE FLAT | 1 |
| 12 | 4170924 | NUT, 3/4-10 STOVER SWAGED | 1 |
| 13 | 4170807 | WHEEL YOKE ASSEMBLY, EFLW 9 IN | 1 |
| | | (INCLUDES ITEMS 1-12) | |
| | | | |

FIGURE 7



FLEX DECK MOWER

DECK 2 WLDMNT & HARDWARE

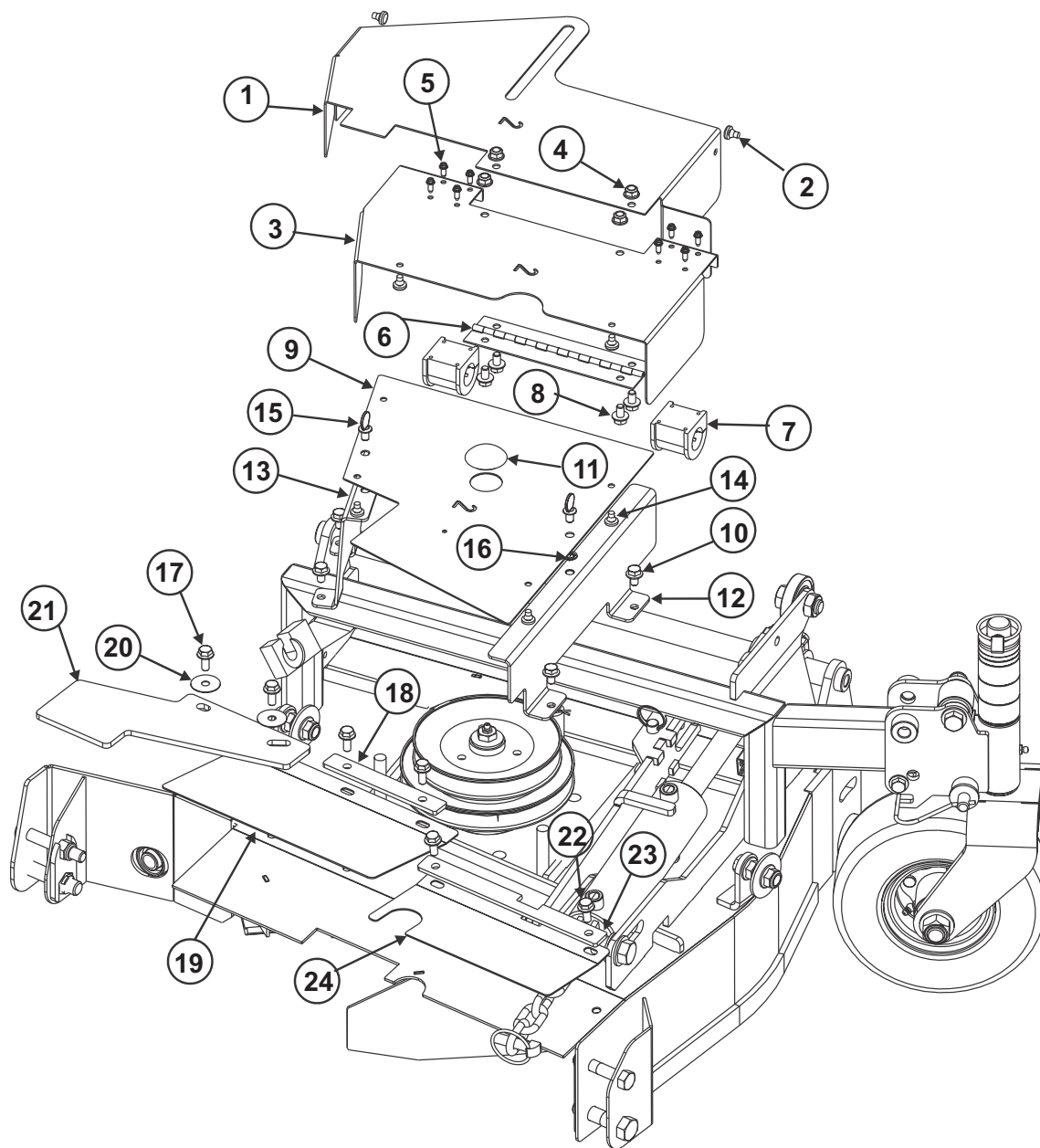
FIGURE 7

| ITEM | PART NO. | DESCRIPTION | QTY |
|------|------------|--|-----|
| 1 | 64237-10 | NUT, 10MM X 1.25 NYLON | 1 |
| 2 | 64207-10 | NUT, M10-1.25 FREE ZINC PLATE | 1 |
| 3 | 64206-18 | SCREW, M10-1.25 X 45 HX CAP | 1 |
| 4 | 64123-325 | BOLT, 5/8-11 X 3 HEX HEAD GRADE 5 | 2 |
| 5 | 4170755 | BUSHING, URETHANE PIVOT | 4 |
| 6 | 64163-76 | WASHER, 5/8" STANDARD FLAT | 2 |
| 7 | 64236-04 | NUT, 5/8-11 FLEXLOC | 4 |
| 8 | 4170809 | HINGE WELDMENT, #2 DECK | 1 |
| 9 | 64213-72 | BOLT, 1/2-13 X 2 1/2" HEX HEAD GRADE 5 | 1 |
| 10 | 4175270-13 | PIN, 5/8 IN CLEVIS RETAINING | 1 |
| 11 | 4172070-14 | TUBE, BELT KEEPER , SHORT | 1 |
| 12 | 64123-326 | BOLT, 5/8-11 X 1 1/2" HEX HEAD FULL THREAD | 2 |
| 13 | 4170811 | SPACER, BEARING | 1 |
| 14 | 4170812 | BEARING, 1.25" X 2.25" X .50" | 1 |
| 15 | 64163-119 | WASHER, 5/8" SAE FLAT | 1 |
| 16 | 64151-42 | NUT, 5/8-11 JAM NYL LOCK | 1 |
| 17 | 64123-168 | BOLT, 5/8-11 X 2 1/2" HEX HEAD GRADE 5 | 1 |
| 18 | 64229-05 | NUT, 1/2-13 NYL HEX LOCK | 6 |
| 19 | 64123-31 | BOLT, 1/2-13 X 3 HEX HEAD GRADE 5 | 2 |
| 20 | 4170760 | SLEEVE, .875X1.39 LONG BUSHING | 2 |
| 21 | 4170758 | BUSHING, .875" BEARING | 2 |
| 22 | 4170919 | BOLT, 5/16-18 X 2" ELEVATOR | 1 |
| 23 | 64006-02 | WASHER, 5/16" SPLIT LOCK | 1 |
| 24 | 64025-02 | NUT, 5/16-18 HEX | 1 |
| 25 | 64123-322 | BOLT, 5/8-11 X 2 3/4 HEX HEAD GRADE 5 | 1 |
| 26 | 4175270-15 | NUT, 100EF HINGE CAM ADJUST | 2 |
| 27 | 4170767 | DEFLECTOR PLATE, #5 DECK GRASS | 1 |
| 28 | 64018-53 | BOLT, 3/8-16 X 3/4" CARRIAGE | 2 |
| 29 | 64268-03 | BOLT, 3/8-16X1 CARRIAGE | 2 |
| 30 | 4175270-79 | S-SPRING PLATE, TRANS BOLT ON | 1 |
| 31 | 64229-02 | BAFFLE ASSEMBLY, #2 BLOWOUT | 4 |
| 32 | 64123-68 | BLT-HEX 5/16-18X1 | 2 |
| 33 | 64123-316 | BOLT, 1/2-13X1 3/4 HH GR5 FT | 2 |
| 34 | 4175270-16 | WASHER, MOTOR MOUNT | 2 |
| 35 | 64123-31 | BLT-HEX 1/2-13X3 | 1 |
| 36 | | SPINDLE ASSEMBLY, SEE PGS 26-27 | 1 |
| 37 | 4170899 | CYLINDER ASSEMBLY, #2 DECK LIFT | 1 |
| 38 | 4170894 | YOKE ASSEMBLY, PIVOTING WHEEL | 1 |
| 39 | 64006-05 | WASHER, 1/2" SPLIT LOCK | 1 |
| 40 | 64163-61 | WASHER, 3/8" SAE | 1 |
| | | | |
| | | | |
| | | | |

DECK 2 WLDMNT COVERS

FIGURE 8

**FLEX
DECK
MOWER**



FLEX DECK MOWER

DECK 2 WLDMNT COVERS

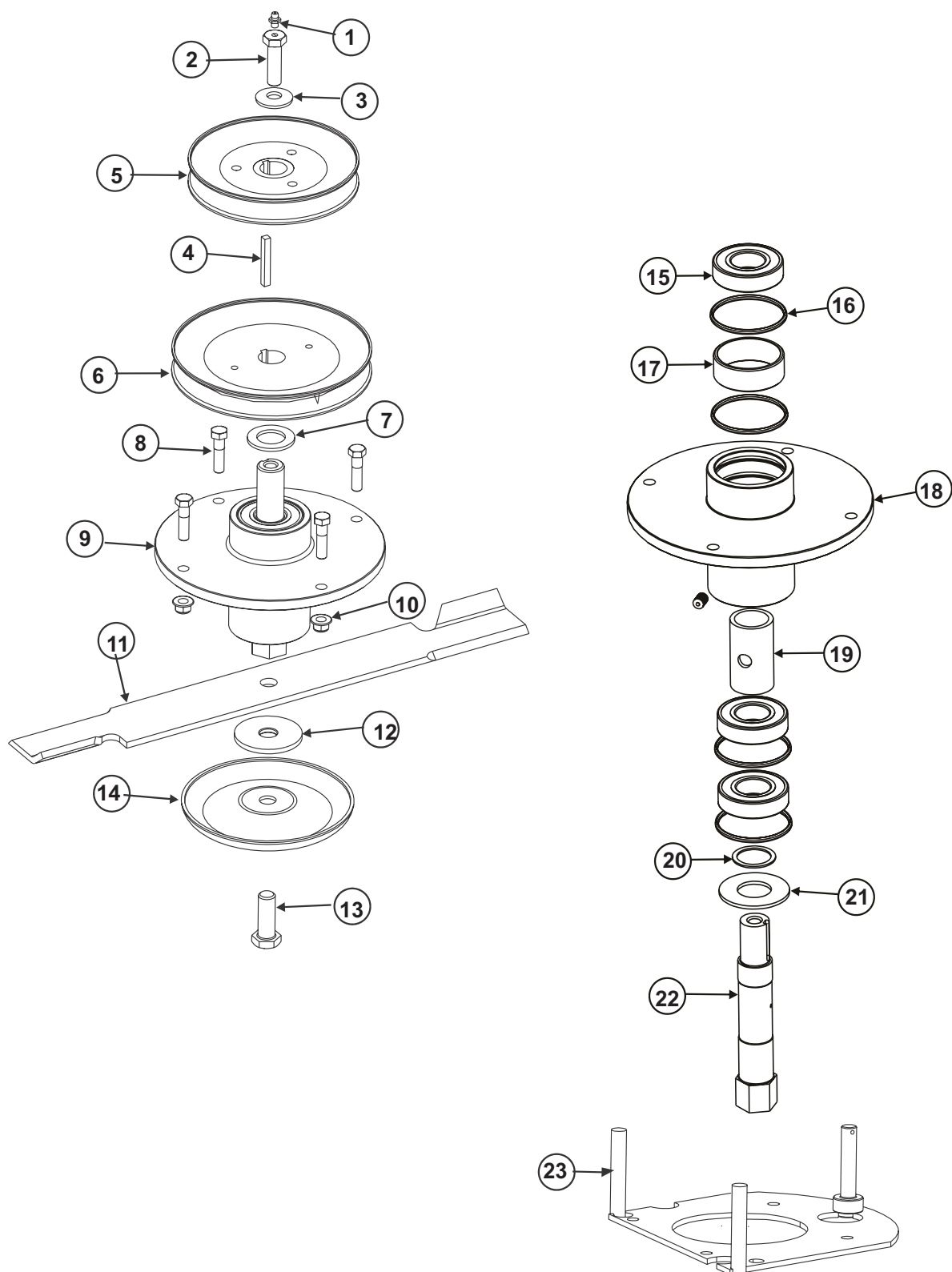
FIGURE 8

| ITEM | PART NO. | DESCRIPTION | QTY |
|------|------------|---------------------------------------|-----|
| 1 | 4170817 | COVER, #1 DECK SLIDING | 1 |
| 2 | 4170734 | BUMPER, RUBBER BUTTON | 4 |
| 3 | 4170818 | COVER, #2 DECK RIGHT SLIDING | 1 |
| 4 | 64229-02 | NUT-NYLON LOCK 5/16-18 | 4 |
| 5 | 64197-008 | SCREW, #10 X 1/2" LONG AB SLOT HEX | 8 |
| 6 | 4170819 | HINGE, 521E SLIDING COVER | 1 |
| 7 | 4170743 | PIVOT BEARING, COVER | 2 |
| 8 | 64123-92 | BOLT, 5/16-18 X 1/2" HEX HEAD GRADE 5 | 4 |
| 9 | 4175270-18 | COVER PLATE, #2 | 1 |
| 10 | 64123-92 | BOLT, 5/16-18 X 1/2" HEX HEAD GRADE 5 | 4 |
| 11 | 4170772 | Cover, 1 3/8" HOLE PLUG | 1 |
| 12 | 4170822 | GUARD WELDMENT, #2 FRONT | 1 |
| 13 | 4175270-19 | GUARD WELDMENT, #2 REAR | 1 |
| 14 | 4170734 | BUMPER, RUBBER BUTTON | 4 |
| 15 | 4175270-63 | SCREW, 5/16-18 X 1/2 SERRATED | 2 |
| 16 | 4175270-64 | NUT, 5/16 PUSH | 2 |
| 17 | 64123-54 | BOLT, 5/16-18 X 3/4" HEX HEAD GRADE 5 | 4 |
| 18 | 4170825 | CLAMP PLATE, #2 DECK TRAP DOOR | 1 |
| 19 | 4170744 | DOOR, #2 DECK TRAP | 1 |
| 20 | 64163-212 | WASHER, 5/16 X 1 1/4 FENDER | 2 |
| 21 | 4170747 | DOOR, #2/4 DECK TRAP | 1 |
| 22 | 64123-54 | BOLT, 5/16-18 X 3/4" HEX HEAD GRADE 5 | 4 |
| 23 | 4170827 | CLAMP PLATE, #2 DECK TRAP DOOR | 1 |
| 24 | 4170746 | DOOR, #2 DECK TRAP | 1 |

DECK 2 PULLEY & SPINDLE ASSY

**FLEX
DECK
MOWER**

FIGURE 9



FLEX DECK MOWER

DECK 2 PULLEY & SPINDLE ASSY

FIGURE 9

| ITEM | PART NO. | DESCRIPTION | QTY |
|------|------------|--|-----|
| 1 | 85010N | FITTING, 1/4-28 STRAIGHT GREASE | 1 |
| 2 | 4170740 | BOLT, SPINDLE SINGLE PULLEY | 1 |
| 3 | 4170930 | WASHER, 1/2" PLAIN BELLEVILLE | 1 |
| 4 | 4175270-20 | KEY, 1/4" SQUARE X 2" LONG | 1 |
| 5 | 4175270-21 | SHEAVE, SINGLE D6.3 SHORT HUB | 1 |
| 6 | 4175270-22 | SHEAVE, DEEP GROOVE 6.5 PD | 1 |
| 7 | 4175270-90 | WASHER 1/1/19 X 1 3/4 X 1/8T | 1 |
| 8 | 64123-70 | BOLT, 3/8-16 X 1 1/2" HEX HEAD GRADE 5 | 4 |
| 9 | | SPINDLE ASSEMBLY 7.83 SHAFT | 1 |
| | | SEE ITEMS 15-23 | |
| 10 | 64268-03 | NUT, 3/8-16 FLANGED HEX NYLOC | 4 |
| 11 | 4170730 | BLADE, 21" X 2 1/2" X 1/4" HIGH LIFT | 1 |
| | 4175861 | BLADE, 21" LOW-LIFT | 1 |
| | 4175862 | BLADE, 21" GATOR MULCHING | 1 |
| 12 | 4170830 | WASHER, 2 1/2" X 11/16" X 3/16" NYLON | 1 |
| 13 | 64123-211 | BOLT, 5/8-18 X 1 3/4" HEX HEAD GRADE 5 | 1 |
| 14 | 4170794 | BLADE DISC, ANTI-SCALP | 1 |
| 15 | 4170769 | BEARING, 6206-2NSE | 3 |
| 16 | 4170766 | O-RING, 2 1/2" ID X 2 3/4" OD | 4 |
| 17 | 4170795 | SPACER, BEARING HOUSING | 1 |
| 18 | 4170749 | SPINDLE HOUSING, ZT- COMMON CORE | 1 |
| 19 | 4170796 | SPACER, SPINDLE BEARING HOUSING | 1 |
| 20 | 4170927 | WASHER, 1.50" X 1.185" X 16GA | 1 |
| 21 | 4170926 | WASHER, 2.435" X 1.185" X 11GA | 1 |
| 22 | 4175270-24 | SHAFT, CENTER SPINDLE ZT CAST | 1 |
| 23 | 4175270-89 | S-PLATE WLDMT, #2 DECK KIT | 1 |

Concerning Nachi Sealed Bearings:

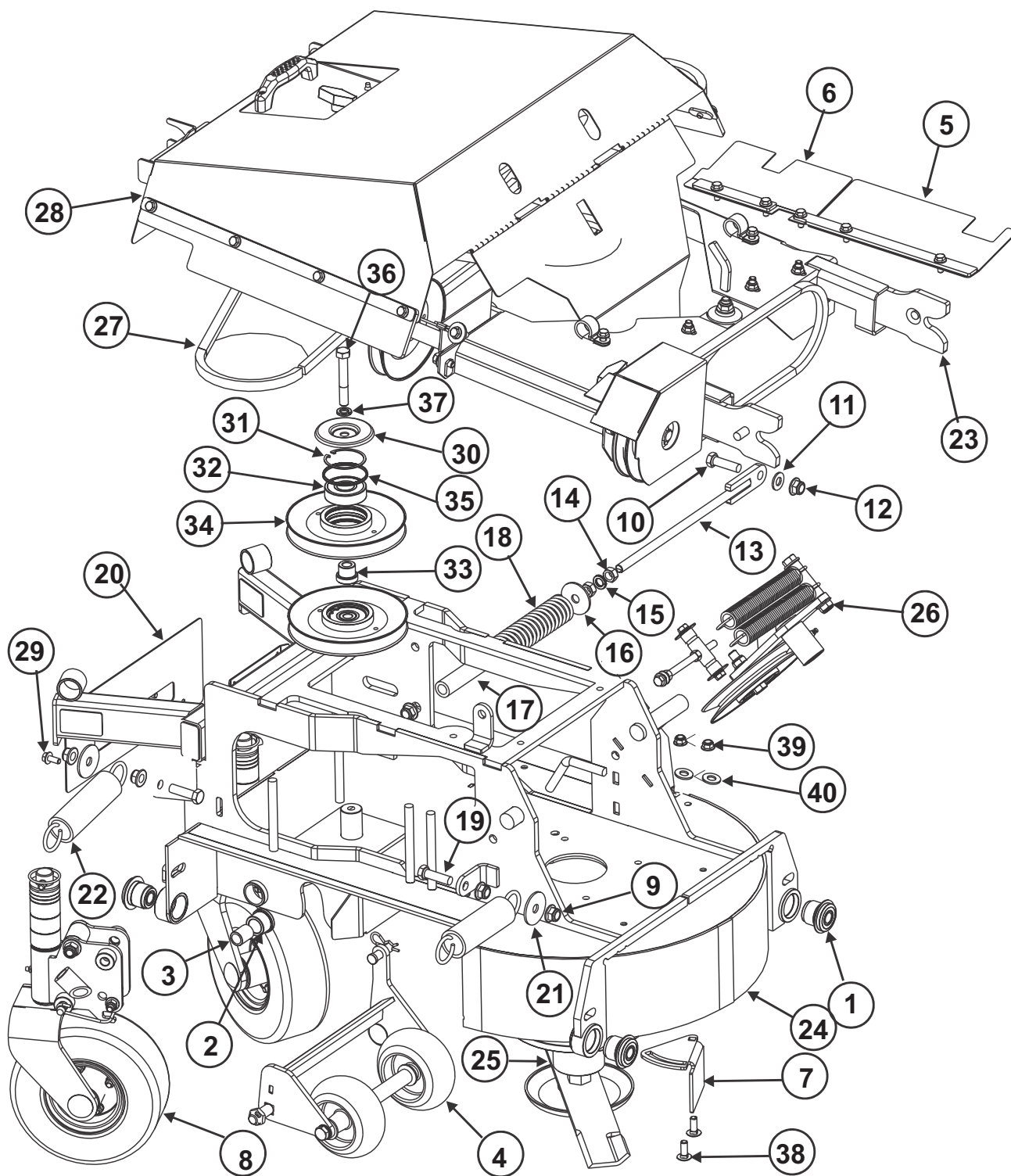
One of the most common misconceptions that cause a high number of bearing failures is that a bearing needs to be completely packed full. Many people have been taught; the more grease, the better. We have even heard of cases where people do not feel bearing manufacturers use enough grease in sealed and shielded ball bearings, so they remove one seal or shield and pack the bearing with more grease. These misconceptions are completely false. Over lubricating the bearings forces the motor to work harder.

- Nachi standard grease fill for sealed and shielded ball bearings is 20% to 30% full
- Too much grease can cause excess friction, thereby overheating the bearing and causing premature failure.
- Only a small of grease is required to lubricate a bearing in motion.
- When a bearing is in motion, most of the grease is pushed to the side (channeling) leaving a thin film of oil between the raceways and rolling elements.
- When using open bearings, pack the bearing per illustration.

DECK 3 WLDMNT & HARDWARE

FLEX DECK MOWER

FIGURE 10



FLEX DECK MOWER

DECK 3 WLDMNT & HARDWARE

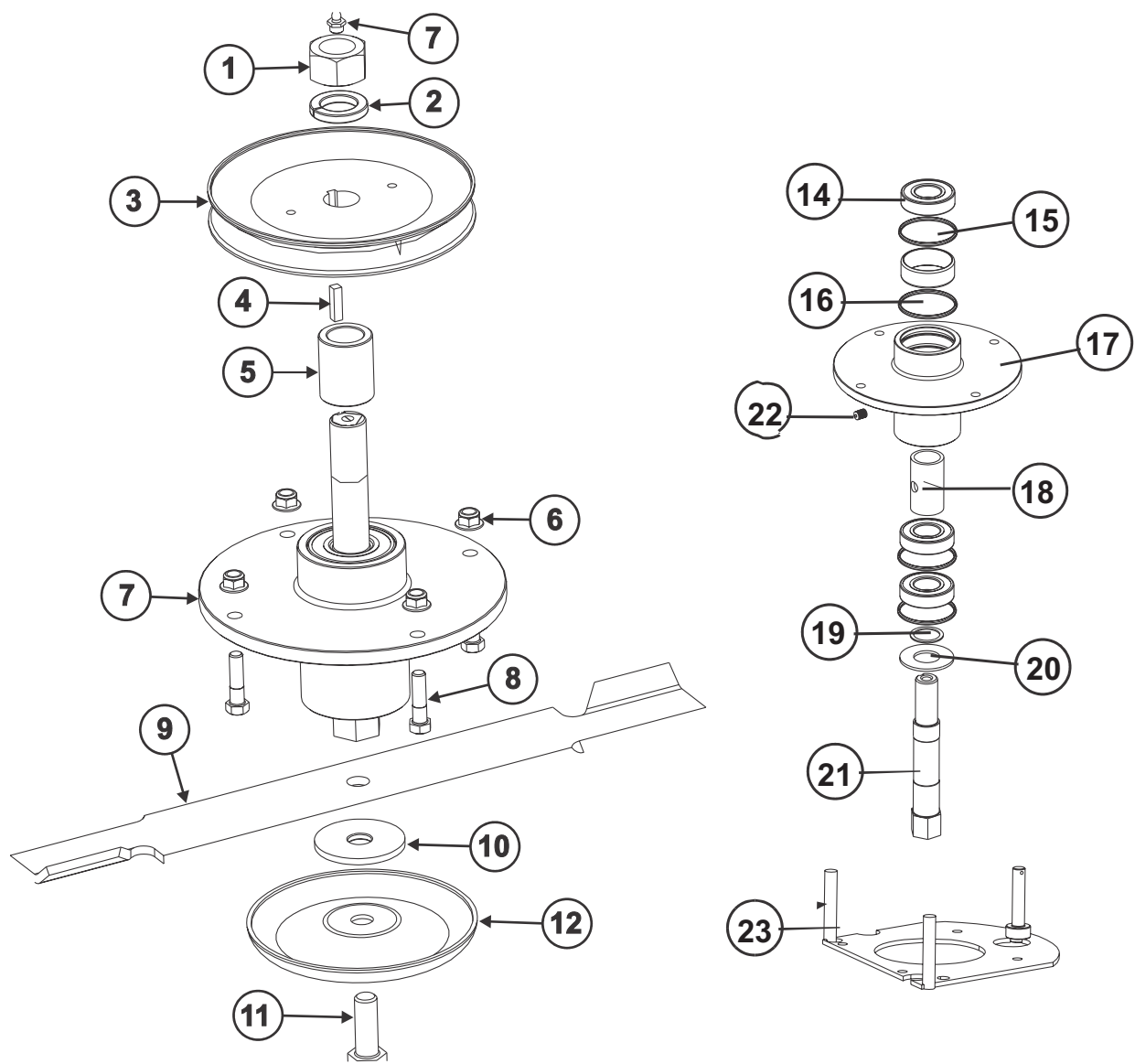
FIGURE 10

| ITEM | PART NO. | DESCRIPTION | QTY |
|------|------------|---|-----|
| 1 | 4170755 | BUSHING, URETHANE PIVOT | 4 |
| 2 | 4170758 | BUSHING, .875 BEARING | 2 |
| 3 | 4170843 | SLEEVE, .875X1.14 LG BUSHING | 2 |
| 4 | 4170872 | ROLLER ASSEMBLY, 521E/Z ANTI-SCALP | 1 |
| 5 | 4170866 | DOOR ASSEMBLY, #3 DECK TRAP | 1 |
| 6 | 4170868 | DOOR ASSEMBLY, #3 DECK TRAP | 1 |
| 7 | 4170767 | DEFLECTOR GRASS | 1 |
| 8 | 4170894 | YOKE ASSEMBLY, PIVOTING WHEEL | 2 |
| 9 | 64229-05 | NUT, 1/2-13 FLANGED HEX NYLOCK | 4 |
| 10 | 64123-316 | BOLT, 1/2-13 X 1 3/4" HEX HEAD GR 5 FULL THREAD | 1 |
| 11 | 64163-118 | WASHER, 1/2" SAE FLAT | 1 |
| 12 | 64229-05 | NUT, 1/2-13 FLANGED HEX NYLOCK | 2 |
| 13 | 4170834 | TENSIONER WELDMENT, DECK | 1 |
| 14 | 64025-09 | NUT, 1/2-13 HEX | 2 |
| 15 | 4170930 | WASHER, 1/2" SPLIT LOCK | 1 |
| 16 | 4175270-16 | WASHER, MOTOR MOUNT | 1 |
| 17 | 4170836 | SPACER, NEOPRENE SPRING | 1 |
| 18 | 4170837 | SPRING, COMP. 1-1/2 OD X 6-3/4 X 3/16 WIRE | 1 |
| 19 | 64123-316 | BOLT, 1/2-13 X 1 3/4" HEX HEAD GR 5 FULL THREAD | 2 |
| 20 | 4175270-25 | FRONT GUARD, #3 DECK | 1 |
| 21 | 4175270-16 | WASHER, MOTOR MOUNT | 2 |
| 22 | 4175270-26 | SPRING, COUNTER BALANCE | 2 |
| 23 | | ARM ASSEMBLY, PUSH SEE PAGES 38-39 | 1 |
| 24 | 4175270-06 | DECK WELDMENT, #3 | 1 |
| 25 | | SPINDLE ASSEMBLY, EFS #3 SEE PAGES 30-31 | 1 |
| 26 | | TENSIONER ASSEMBLY, 7.38" OD SEE PGS 32-33 | 1 |
| 27 | 4175125 | BELT, 80EFS2 MAIN DECK | 1 |
| 28 | | COVER ASSEMBLY, CENTER SEE PGS 34-35 | 1 |
| 29 | 64123-54 | BOLT, 5/16-18X3/4 GR5 FHCS SERRATED | 2 |
| 30 | 4170798 | WASHER, WATER SHED PULLEY | 1 |
| 31 | 64144-45 | RING, 62MM IR DIN #472 RETAINING | 2 |
| 32 | 4170765 | BEARING, SPINDLE TOP 6305 RS | 1 |
| 33 | 4170805 | BOSS, IDLER PULLEY STANDOFF | 1 |
| 34 | 4175270-31 | SHEAVE WELDMENT, 7.38" OD | 1 |
| 35 | 4170766 | O-RING, 2-1/2 ID X 2 3/4 OD | 1 |
| 36 | 64123-95 | BOLT, 1/2-13X3 1/4 HH GR5 | 1 |
| 37 | 4170930 | WASHER, 1/2 SPLIT LOCK | 1 |
| 38 | 64018-53 | BOLT, 3*/8-16 x 3/4 CARRIAGE | 2 |
| 39 | 64263-03 | NUT, 3/8-16 HALF NYLON LOCK | 2 |
| 40 | 64163-61 | WASHER, 3/8 SAE FLAT | 2 |

DECK 3 PULLEY & SPINDLE ASSY

FLEX
DECK
MOWER

FIGURE 11



FLEX DECK MOWER

DECK 3 PULLEY & SPINDLE ASSY

FIGURE 11

| ITEM | PART NO. | DESCRIPTION | QTY |
|------|------------|--|-----|
| 1 | 4175270-77 | NUT, 1-12 FREE | 1 |
| 2 | 4175270-76 | WASHER, 1IN SPLIT LOCK | 1 |
| 3 | 4175270-22 | SHEAVE, DEEP GROOVE 6.50 PD | 1 |
| 4 | 4175270-53 | KEY, 1/4INX 1IN | 1 |
| 5 | 4175270-54 | SPACER, 1.36 L X 1.50 OD X 1.01 ID | 1 |
| 6 | 64268-03 | NUT, 3/8-16 FLANGED HEX NYLOC | 4 |
| 7 | | SPINDLE ASSEMBLY, CENTER ZT CAST | 1 |
| | | SEE ITEMS 14-22 | |
| 8 | 64123-70 | BOLT, 3/8-16 X 1 1/2" HEX HEAD GRADE 5 | 4 |
| 9 | 4170730 | BLADE, 21" X 2 1/2" X 1/4" HIGH LIFT | 1 |
| | 4175861 | BLADE, 21" LOW-LIFT | 1 |
| | 4175862 | BLADE, 21" GATOR MULCHING | 1 |
| 10 | 4170828 | STIFFENER WELDMENT, BLADE E-SERIES | 1 |
| 11 | 4170830 | WASHER, 2 1/2" X 11/16" X 3/16" NYLON | 1 |
| 12 | 64123-211 | BOLT, 5/8-18 X 1 3/4" HEX HEAD GRADE 5 | 1 |
| 13 | 4170794 | BLADE DISC, ANTI-SCALP | 1 |
| 14 | 4170769 | BEARING, 6206-2NSE | 3 |
| 15 | 4170766 | O-RING, 2 1/2" ID X 2 3/4" OD | 4 |
| 16 | 4170795 | SPACER, BEARING HOUSING | 1 |
| 17 | 4170749 | SPINDLE HOUSING, ZT- COMMON CORE | 1 |
| 18 | 4170796 | SPACER, SPINDLE BEARING HOUSING | 1 |
| 19 | 4170927 | WASHER, 1.50" X 1.185" X 16GA | 1 |
| 20 | 4170926 | WASHER, 2.435" X 1.185" X 11GA | 1 |
| 21 | 4175270-56 | SHAFT, SPINDLE THREADED CENTER CAST | 1 |
| 22 | 4175270-57 | FITTING, ZERK 3/8-24 GREASE | 1 |

Concerning Nachi Sealed Bearings:

One of the most common misconceptions that cause a high number of bearing failures is that a bearing needs to be completely packed full. Many people have been taught; the more grease, the better.

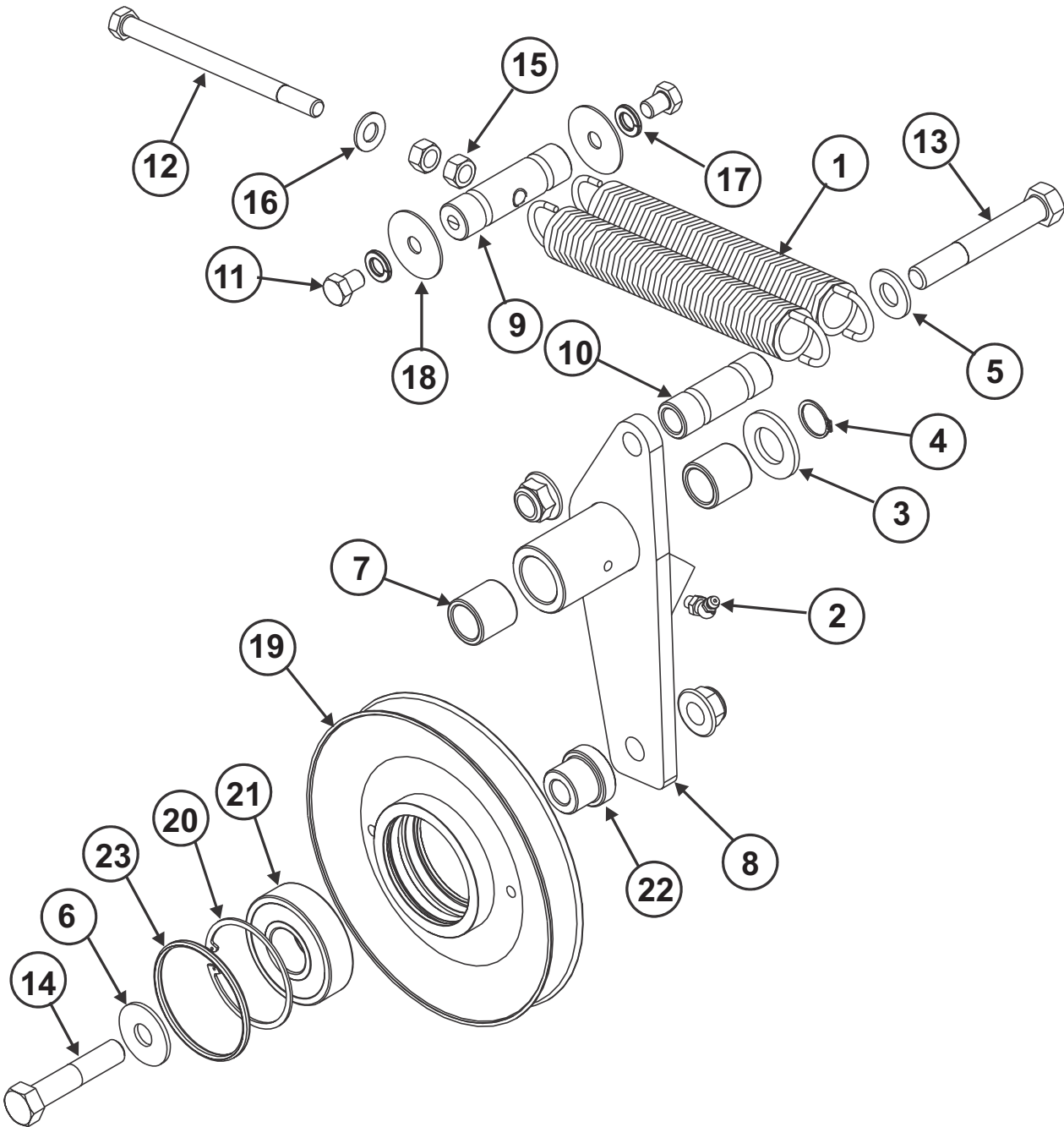
We have even heard of cases where people do not feel bearing manufacturers use enough grease in sealed and shielded ball bearings, so they remove one seal or shield and pack the bearing with more grease. These misconceptions are completely false. Over lubricating the bearings forces the motor to work harder.

- Nachi standard grease fill for sealed and shielded ball bearings is 20% to 30% full
- Too much grease can cause excess friction, thereby overheating the bearing and causing remature failure.
- Only a small of grease is required to lubricate a bearing in motion.
- When a bearing is in motion, most of the grease is pushed to the side (channeling) leaving a thin film of oil between the raceways and rolling elements.
- When using open bearings, pack the bearing per illustration.

DECK 3 TENSIONER ASSY

FLEX
DECK
MOWER

FIGURE 12



FLEX DECK MOWER

DECK 3 TENSIONER ASSY

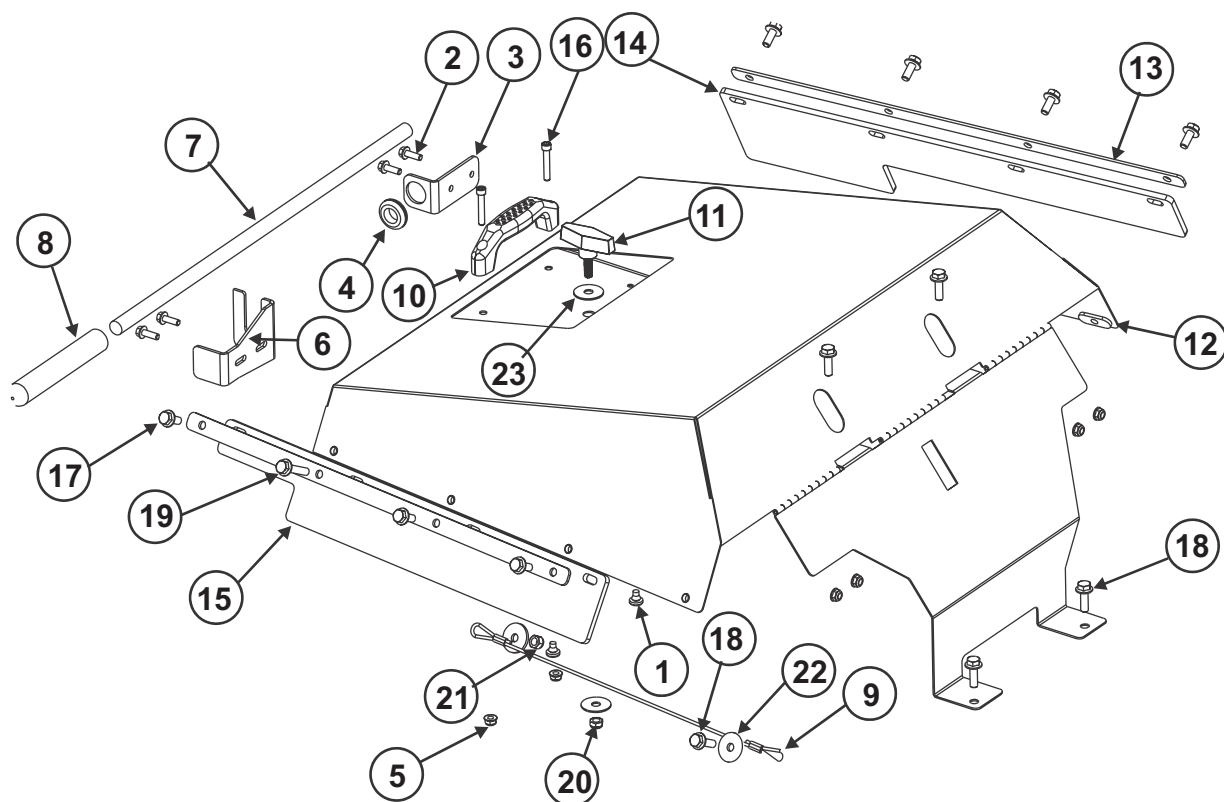
FIGURE 12

| ITEM | PART NO. | DESCRIPTION | QTY |
|------|------------|----------------------------------|-----|
| 1 | 4175270-32 | SPRING, 1X8 3/8 LEG 325E-98 | 1 |
| 2 | 38388 | FITTING, 1/4-28 45 DEG GREASE | 1 |
| 3 | 64163-06 | WASHER, 3/4 AN YEL/CAD | 1 |
| 4 | 64144-02 | RING, 3/4" EXTERNAL - EXTERNAL | 2 |
| 5 | 64163-118 | WASHER, 1/2" SAE FLAT | 1 |
| 6 | 4170929 | WASHER, 1/2" STANDARD FLAT | 1 |
| 7 | 4170752 | BUSHING, 3/4 ID X 1 OD X 1 OIL | 1 |
| 8 | 4175270-33 | TENSIONER WLDMT. BELT | 2 |
| 9 | 4175270-34 | PIVOT BOSS, DUAL SPRING | 1 |
| 10 | 4175270-35 | BOSS, DUAL SPRING | 1 |
| 11 | 64123-08 | BOLT, 3/8-16X1/2 HH GR5 | 2 |
| 12 | 4175270-66 | BOLT, 3/8-16X5 1/2 FT HH TAP | 1 |
| 13 | 64123-293 | BOLT, 1/2-13X3 1/2 HH GR5 | 1 |
| 14 | 64123-72 | BOLT, 1/2-13X2 1/2 HH GR5 | 1 |
| 15 | 64025-05 | NUT, 3/8-16 HEX | 2 |
| 16 | 64163-61 | WASHER, 3/8 FLAT SAE | 1 |
| 17 | 4175270-67 | WASHER, 3/8 SPLIT LOCK | 2 |
| 18 | 4175270-68 | WASHER, 3/8 FENDER | 2 |
| 19 | 4175270-31 | SHEAVE WELDMENT, 7.38" OD | 1 |
| 20 | 64144-45 | RING, 62MM IR DIN #472 RETAINING | 2 |
| 21 | 4170765 | BEARING, SPINDLE TOP 6305 RS | 1 |
| 22 | 4170805 | BOSS, IDLER PULLEY STANDOFF | 1 |
| 23 | 4170766 | O-RING, 2-1/2 ID X 2 3/4 OD | 1 |

DECK 3 WLDMNT COVERS

FIGURE 13

**FLEX
DECK
MOWER**



FLEX DECK MOWER

DECK 3 WLDMNT COVERS

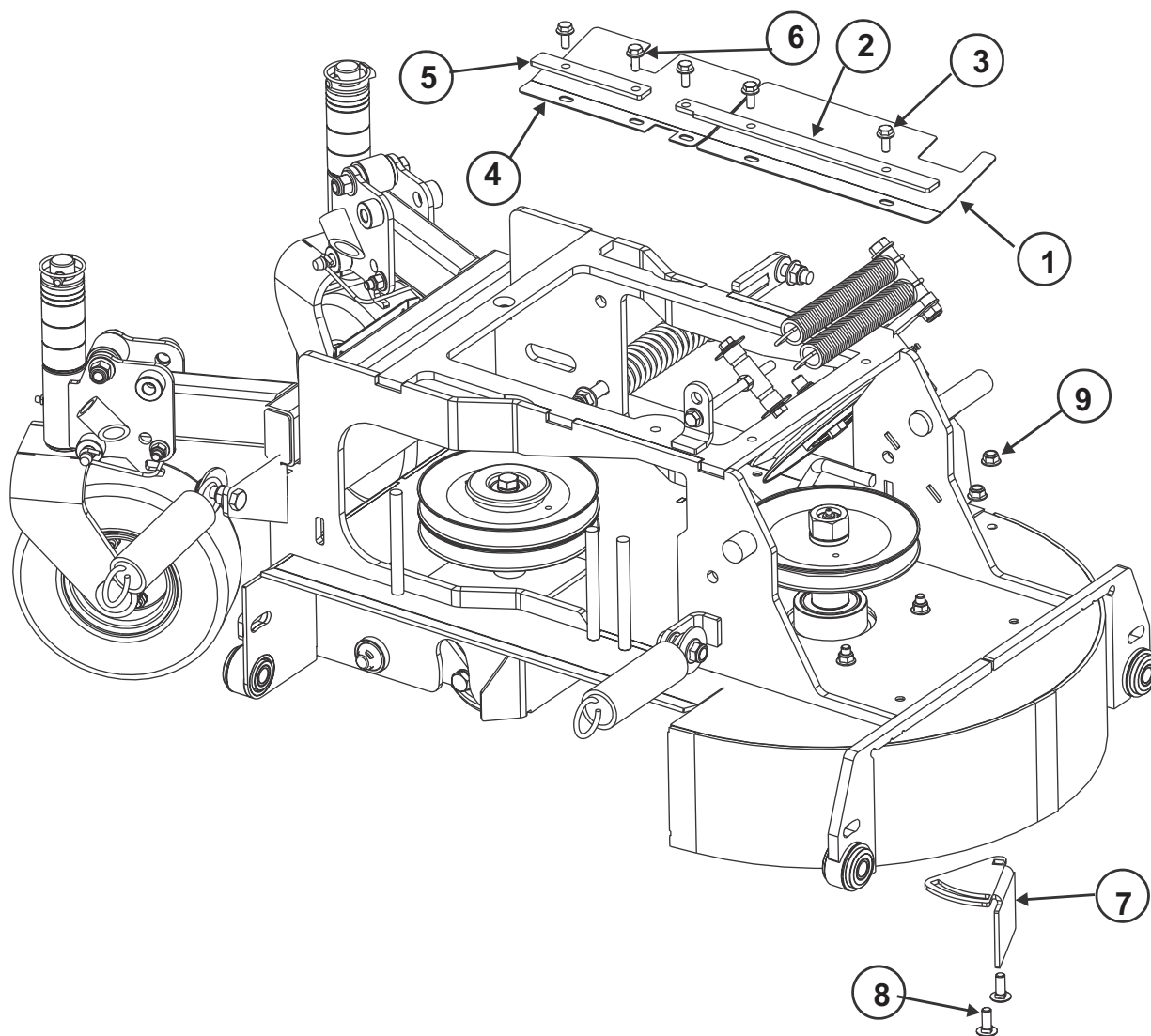
FIGURE 13

| ITEM | PART NO. | DESCRIPTION | QTY |
|------|------------|---------------------------------------|-----|
| 1 | 4170734 | BUMPER, RUBBER BUTTON | 1 |
| 2 | 64123-89 | BOLT, 1/4-20X3/4 GR5 FHCS SERRATED | 4 |
| 3 | 4170861 | BRACKET, DECK BAR HOLDER | 1 |
| 4 | 4170862 | GROMMET, 11/16 X 1 X 1 5/16 RUBBER | 1 |
| 5 | 64268-01 | NUT, 1/4-20 FLANGED HEX NYLOCK | 6 |
| 6 | 4175270-36 | CLIP, VERTICAL HANDLE DECK | 1 |
| 7 | 4170864 | HANDLE, DECK LIFT ROD | 1 |
| 8 | 4170865 | HANDLE, FOAM .625X6X3/16 WALL | 1 |
| 9 | 4175270-37 | CABLE, SEAT LANYARD | 1 |
| 10 | 4175270-38 | HANDLE, HOOD ZT | 1 |
| 11 | 4175270-39 | KNOB, 5/16-18 X 1 TWO ARM | 1 |
| 12 | 4175270-40 | COVER WELDMENT, CENTER | 1 |
| 13 | 4175270-41 | GUARD PLATE, RUBBER | 2 |
| 14 | 4175270-42 | GUARD, RIGHT RUBBER | 1 |
| 15 | 4175270-43 | GUARD, LEFT RUBBER | 1 |
| 16 | 4175270-69 | SCREW, 1/4-20X1 1/2 SHCS 18-8 SS | 2 |
| 17 | 64123-54 | BOLT, 5/16-18X3/4 GR5 FHCS SERRATED | 7 |
| 18 | 4175270-93 | BOLT, 5/16-18X1 GR5 FHCS SERRATED | 5 |
| 19 | 64123-319 | BOLT, 5/16-18X1-1/2 GR5 FHCS SERRATED | 1 |
| 20 | 64151-41 | NUT, 5/16-18 NYLON LOCKING JAM | 1 |
| 21 | 64229-02 | NUT, 5/16-18 NYLOK HEX | 1 |
| 22 | 4175270-70 | WASHER, 5/16 ID X 1/8 FENDER | 2 |
| 23 | 4170773 | WASHER, THROTTLE FRICTION | 2 |

DECK 3 TRAP DOORS

FIGURE 14

**FLEX
DECK
MOWER**



FLEX DECK MOWER

DECK 3 TRAP DOORS

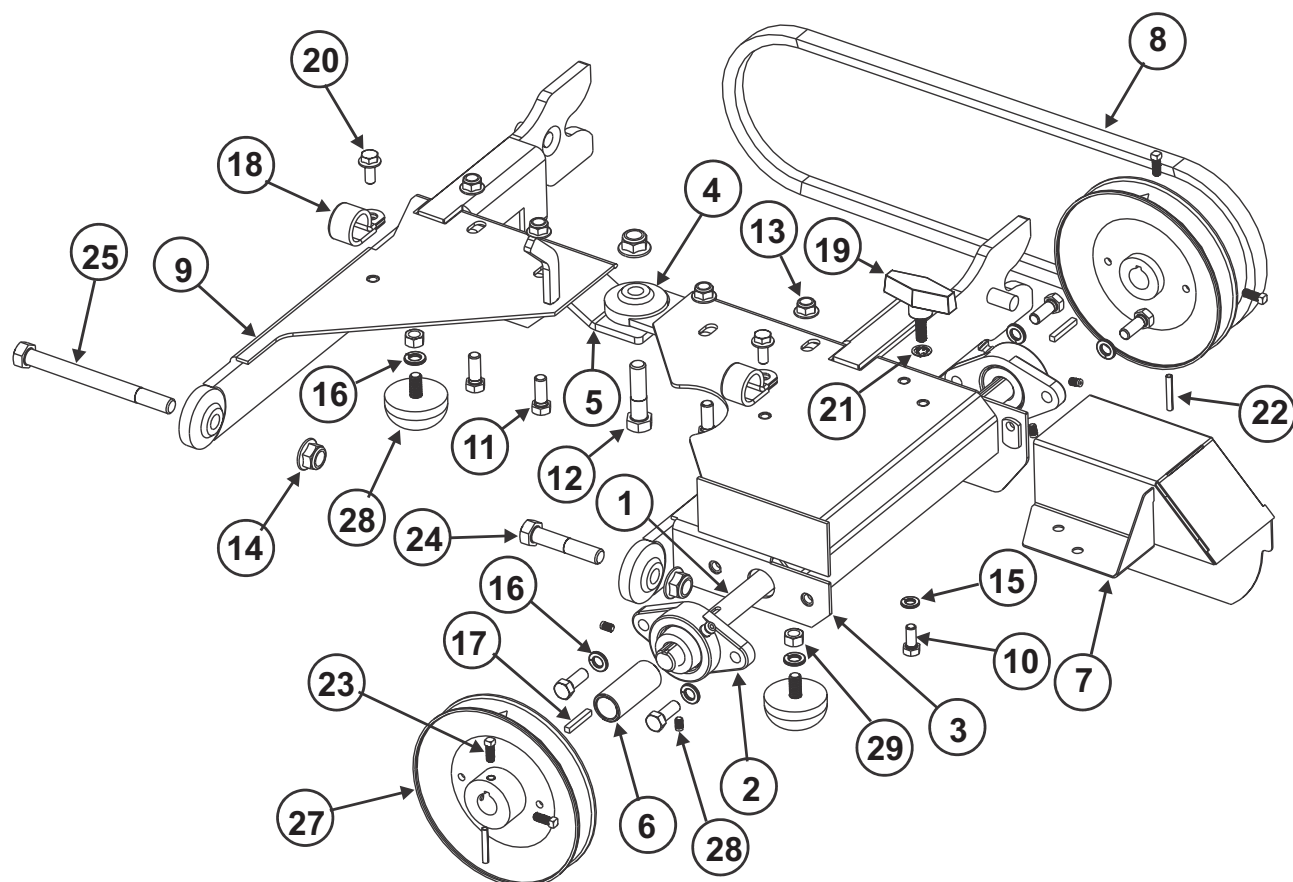
FIGURE 14

| ITEM | PART NO. | DESCRIPTION | QTY |
|------|----------|---|-----|
| 1 | 4170745 | DOOR, 521E/Z #3 DECK TRAP | 1 |
| 2 | 4170867 | CLAMP PLATE, #3 DECK TRAP DOOR | 1 |
| 3 | 64123-54 | BOLT, 5/16-18X3/4 GRADE 5 FHCS SERRATED | 3 |
| 4 | 4170869 | DOOR, 521E/Z #3 DECK TRAP | 1 |
| 5 | 4170870 | CLAMP PLATE, #3 DECK TRAP DOOR | 1 |
| 6 | 64123-54 | BOLT, 5/16-18X3/4 GRADE 5 FHCS SERRATED | 2 |
| 7 | 4170767 | DEFLECTOR PLATE, #5 DECK GRASS | 1 |
| 8 | 64018-53 | BOLT, 3/8-16X1 CARRIAGE GR 5 | 2 |
| 9 | 64268-03 | NUT, 3/8-16 FLANGED HEX NYLOCK | 2 |

PUSH ARM ASSEMBLY

FLEX DECK MOWER

FIGURE 15



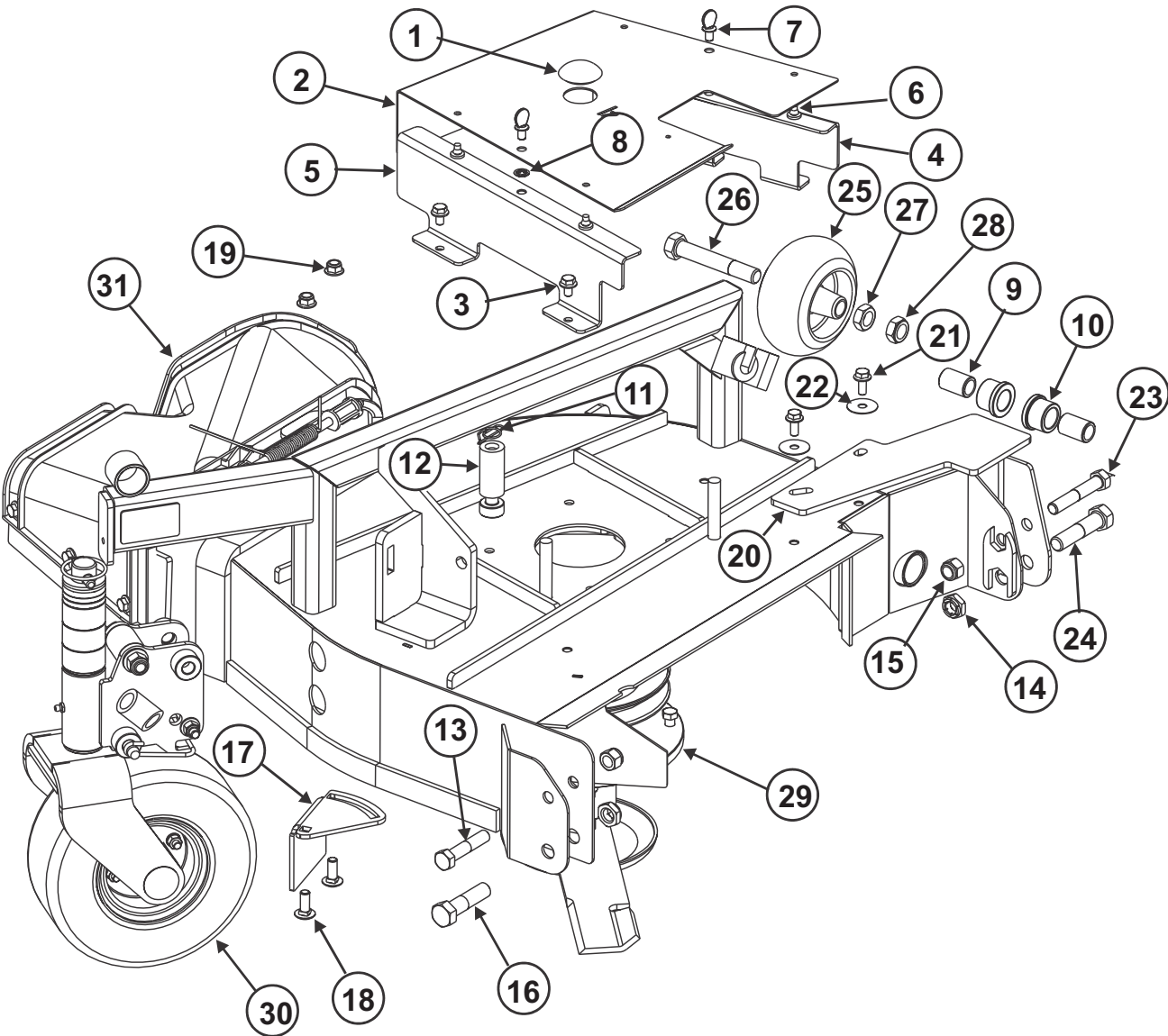
FLEX DECK MOWER

PUSH ARM ASSEMBLY

FIGURE 15

| ITEM | PART NO. | DESCRIPTION | QTY |
|------|------------|-------------------------------------|-----|
| 1 | 4175270-08 | SHAFT, DRIVE, PUSH ARM | 1 |
| 2 | 4175270-09 | BEARING, 3/4 FLANGE | 2 |
| 3 | 4175270-52 | FRAME WELDMENT, PUSH, LEFT | 1 |
| 4 | 4175270-44 | ARM WELDMENT, LEFT CENTER | 1 |
| 5 | 4175270-92 | FRAME PLATE, PUSH ARM, RIGHT CENTER | 1 |
| 6 | 4175270-46 | SPACER, 2.375 L X 1.00 OD X .77 ID | 1 |
| 7 | 4175270-47 | GUARD, PULLEY | 1 |
| 8 | 4174756 | BELT, DRIVE, BX 43 | 1 |
| 9 | 4175270-48 | FRAME WELDMENT, PUSH, RIGHT | 1 |
| 10 | 64123-54 | BOLT, 5/16-18X3/4 HH GR5 | 1 |
| 11 | 64123-50 | BOLT, 3/8-16X1 HH GR5 | 8 |
| 12 | 64123-24 | BOLT, 1/2-13X2 HH GR5 | 1 |
| 13 | 64268-03 | NUT, 3/8-16 FLANGED HEX NYLOCK | 4 |
| 14 | 64229-05 | NUT, 1/2-13 FLANGED HEX NYLOCK | 3 |
| 15 | 64006-02 | WASHER, 5/16 SPLIT LOCK | 1 |
| 16 | 4175270-67 | WASHER, 3/8 SPLIT LOCK | 6 |
| 17 | 4175270-49 | KEY, 3/16 SQUARE X 1 1/4 STEEL | 2 |
| 18 | 4170857 | CLAMP, 1IN ID COATED | 2 |
| 19 | 4175270-39 | KNOB, 5/16-18 X 1 TWO ARM | 1 |
| 20 | 64123-54 | BOLT, 5/16-18X3/4 GR5 FHCS SERRATED | 2 |
| 21 | 4175270-64 | NUT, 5/16 PUSH | 1 |
| 22 | 4175270-71 | PIN, 3/16X1 1/4 ROLL | 2 |
| 23 | 4175270-72 | SCREW, 1/4-20X5/8 SQ HD CUP PT SET | 4 |
| 24 | 4175270-73 | BOLT, 1/2-13 X 2-1/2 HH G8 | 1 |
| 25 | 4175270-74 | BOLT, 1/2-13 X 5-1/2 HH G8 | 1 |
| 26 | 4175270-50 | BUMP STOP | 2 |
| 27 | 4175270-51 | SHEAVE, DEEP GROOVE, 5.57 PD | 2 |
| 28 | 4175270-75 | SCREW, M6-1X8 SHSS | 4 |
| 29 | 64025-05 | NUT, 3/8-16 HEX | 2 |

FIGURE 16



FLEX DECK MOWER

DECK 4 WLDMNT COVERS & HARDWARE

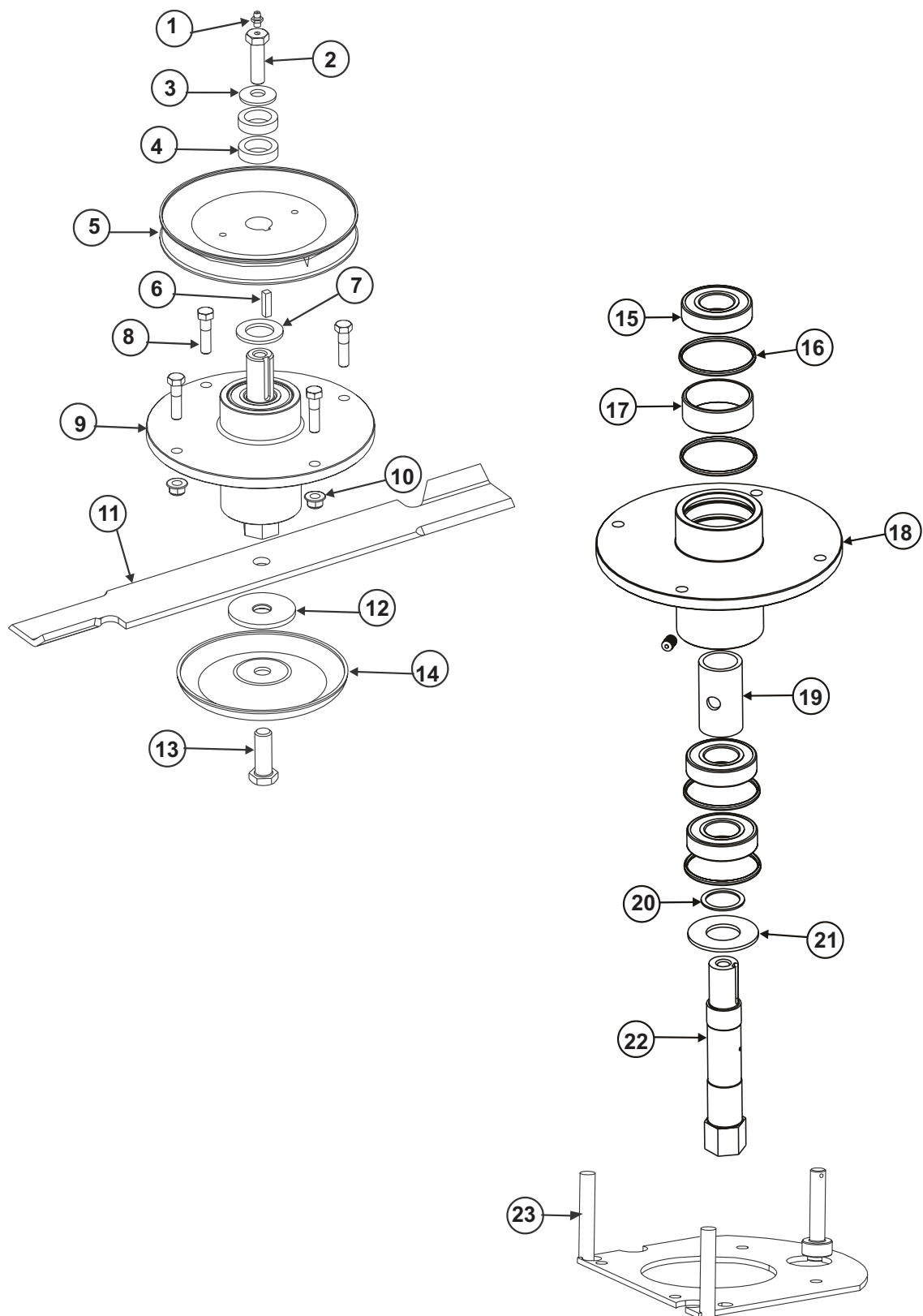
FIGURE 16

| ITEM | PART NO. | DESCRIPTION | QTY |
|------|------------|---|-----|
| 1 | 4170772 | COVER, HOLE PLUG 1-3/8 | 1 |
| 2 | 4175270-58 | COVER PLATE, #4 | 1 |
| 3 | 64123-92 | BOLT, 5/16-18X1/2 GRADE 5 FHCS SERRATED | 4 |
| 4 | 4170879 | GUARD WELDMENT, #4 REAR | 1 |
| 5 | 4170880 | GUARD WELDMENT, #4 FRONT | 1 |
| 6 | 4170734 | BUMPER, RUBBER BUTTON | 1 |
| 7 | 4175270-63 | SCREW, 5/16-18X1/2 THUMB W/ SHOULDER | 2 |
| 8 | 4175270-64 | NUT, 5/16 PUSH | 2 |
| 9 | 4170760 | SLEEVE, .875X1.39 LG BUSHING | 2 |
| 10 | 4170758 | BUSHING, .875 BEARING | 2 |
| 11 | 4175270-13 | PIN, 5/8 IN CLEVIS RETAINING | 1 |
| 12 | 4175270-14 | TUBE, BELT KEEPER, SHORT | 1 |
| 13 | 64123-72 | BOLT, 1/2-13 X 2 1/2" HEX HEAD GRADE 5 | 1 |
| 14 | 64263-04 | NUT, 5/8-11 FLEXLOC | 2 |
| 15 | 64229-05 | NUT, 1/2-13 NYL HEX LOCK | 2 |
| 16 | 64123-168 | BOLT, 5/8-11 X 2 1/2" HEX HEAD GRADE 5 | 1 |
| 17 | 4170767 | DEFLECTOR PLATE, #5 DECK GRASS | 1 |
| 18 | 64018-53 | BOLT, 3/8-16X1 CARRIAGE | 2 |
| 19 | 64268-03 | NUT, 3/8-16 FLANGED HEX NYLOCK | 2 |
| 20 | 4170747 | DOOR, #2/4 DECK TRAP | 2 |
| 21 | 64123-54 | BOLT, 5/16-18X3/4 GRADE 5 FHCS SERRATED | 2 |
| 22 | 64163-119 | WASHER, 5/16 X 1 1/4 FENDER | 2 |
| 23 | 64123-31 | BOLT, 1/2-13 X 3" HEX HEAD GR5 | 1 |
| 24 | 64123-322 | BOLT, 5/8-11 X 2 3/4" HEX HEAD GRADE 5 | 1 |
| 25 | 4170739 | WHEEL, ANTI-SCALP, 5-5/8" HOLE | 1 |
| 26 | 64123-234 | BOLT, 5/8-11X4 GR5 HH | 1 |
| 27 | 64141-45 | NUT, 5/8-11 JAM | 1 |
| 28 | 64151-42 | NUT, 5/8-11 JAM NYL LOCK | 1 |
| 29 | | SPINDLE ASSEMBLY, #4 EFS SEE PGS 42-43 | 1 |
| 30 | 4170894 | YOKE ASSEMBLY, P'IVOTING WHEEL | 1 |
| 31 | 4170882 | CHUTE ASSEMBLY, EXTENDED GRASS | 1 |

DECK 4 PULLEY & SPINDLE ASSY

**FLEX
DECK
MOWER**

FIGURE 17



FLEX DECK MOWER

DECK 4 PULLEY & SPINDLE ASSY

FIGURE 17

| ITEM | PART NO. | DESCRIPTION | QTY |
|------|------------|--|-----|
| 1 | 85010N | FITTING, 1/4-28 STRAIGHT GREASE | 1 |
| 2 | 4170741 | BOLT, SPINDLE PULLEY 1/2-13 X 1 3/4" | 1 |
| 3 | 4170930 | WASHER, 1/2 PLAIN BELLEVILLE | 1 |
| 4 | 4170829 | WASHER, 3/8 X 1.5X1.01 | 2 |
| 5 | 4175270-22 | SHEAVE, DEEP GROOVE 6.50 PD | 1 |
| 6 | 4175270-53 | KEY, 1/4INX 1IN | 1 |
| 7 | 4175270-90 | WASHER, 1-1/16 X 1-3/4 X 1/8 | 1 |
| 8 | 64123-70 | BOLT, 3/8-16 X 1 1/2" HEX HEAD GRADE 5 | 4 |
| 9 | | SPINDLE ASSEMBLY, ZT CAST | 1 |
| | | SEE ITEMS 15-23 | |
| 10 | 64268-03 | NUT, 3/8-16 FLANGED HEX NYLOC | 4 |
| 11 | 4170730 | BLADE, 21" X 2 1/2" X 1/4" HIGH LIFT | 1 |
| | 4175861 | BLADE, 21" LOW-LIFT | 1 |
| | 4175862 | BLADE, 21" GATOR MULCHING | 1 |
| 12 | 4070830 | WASHER, 2 1/2" X 11/16" X 3/16" NYLON | 1 |
| 13 | 64123-211 | BOLT, 5/8-18 X 1 3/4" HEX HEAD GRADE 5 | 1 |
| 14 | 4170794 | BLADE DISC, ANTI-SCALP | 1 |
| 15 | 4170769 | BEARING, 6206-2NSE | 3 |
| 16 | 4170766 | O-RING, 2 1/2" ID X 2 3/4" OD | 4 |
| 17 | 4170795 | SPACER, BEARING HOUSING | 1 |
| 18 | 4170749 | SPINDLE HOUSING, ZT- COMMON CORE | 1 |
| 19 | 4170796 | SPACER, SPINDLE BEARING HOUSING | 1 |
| 20 | 4170927 | WASHER, 1.50" X 1.185" X 16GA | 1 |
| 21 | 4170926 | WASHER, 2.435" X 1.185" X 11GA | 1 |
| 22 | 4170748 | SHAFT, BLADE SPINDLE ZT CAST | 1 |
| 23 | 4175270-78 | PLATE-WLDMT #4 DECK KIT- | 1 |

***OPTIONAL BLADES ORDER SEPERATELY THROUGH LASTEC.**

Concerning Nachi Sealed Bearings:

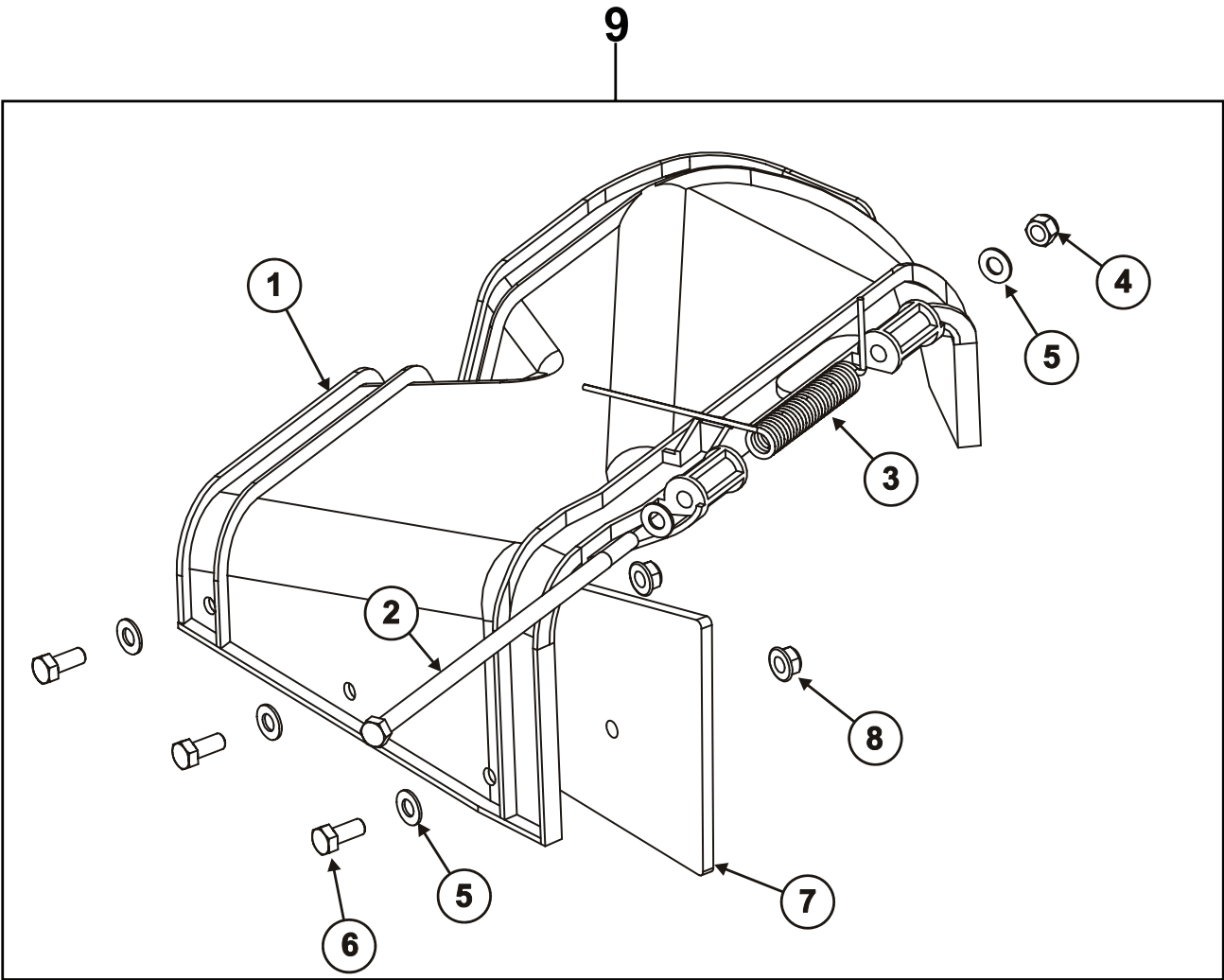
One of the most common misconceptions that cause a high number of bearing failures is that a bearing needs to be completely packed full. Many people have been taught; the more grease, the better. We have even heard of cases where people do not feel bearing manufacturers use enough grease in sealed and shielded ball bearings, so they remove one seal or shield and pack the bearing with more grease. These misconceptions are completely false. Over lubricating the bearings forces the motor to work harder.

- Nachi standard grease fill for sealed and shielded ball bearings is 20% to 30% full
- Too much grease can cause excess friction, thereby overheating the bearing and causing remature failure.
- Only a small of grease is required to lubricate a bearing in motion.
- When a bearing is in motion, most of the grease is pushed to the side (channeling) leaving a thin film of oil between the raceways and rolling elements.
- When using open bearings, pack the bearing per illustration.

EXTENDED CHUTE ASSY

**FLEX
DECK
MOWER**

FIGURE 18



FLEX DECK MOWER

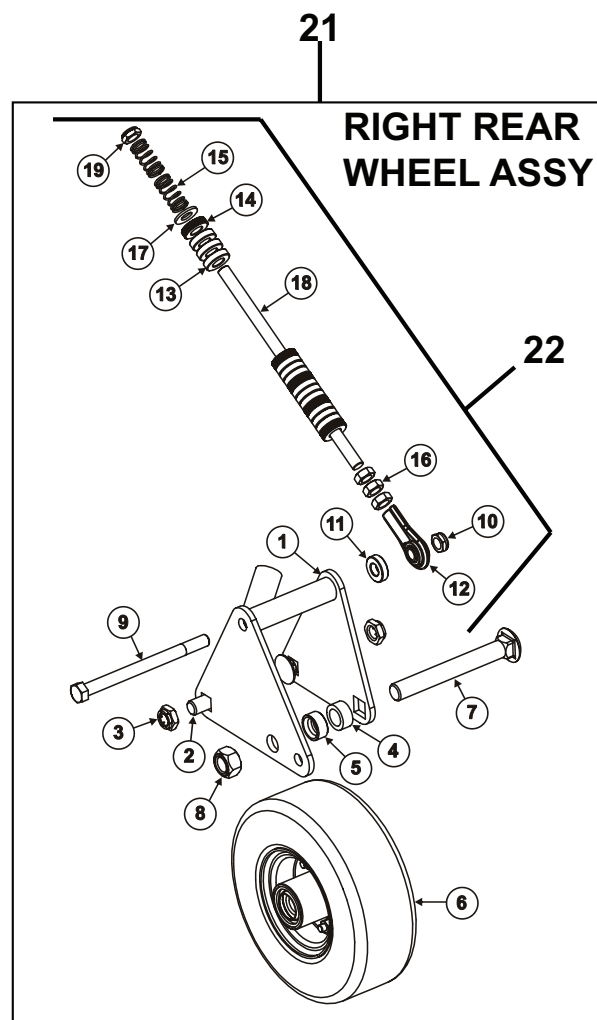
EXTENDED CHUTE ASSY

FIGURE 18

| ITEM | PART NO. | DESCRIPTION | QTY |
|------|-----------|-------------------------------------|-----|
| 1 | 4170737 | GRASS CHUTE, MODIFIED | 1 |
| 2 | 64123-321 | BOLT, 5/16-18 X 9 HEX HEAD GRADE 5 | 1 |
| 3 | 4170883 | SPRING, DEERE RH TORSION | 1 |
| 4 | 64229-02 | NUT, 5/16-18 NYLOK HEX | 1 |
| 5 | 64163-95 | WASHER, 5/16" SAE FLAT | 5 |
| 6 | 64123-68 | BOLT, 5/16-18 X 1" HEX HEAD GRADE 5 | 3 |
| 7 | 4170736 | CHUTE EXTENSION, GRASS RUBBER | 1 |
| 8 | 64268-02 | NUT, 5/16-18 FLANGED HEX NYLOCK | 3 |
| 9 | 4170882 | GRASS CHUTE ASSEMBLY, EXTENDED | 1 |
| | | (INCLUDES ITEMS 1-8) | |

FIGURE 19

FLEX DECK MOWER



FLEX DECK MOWER

REAR WHEEL ASSYS

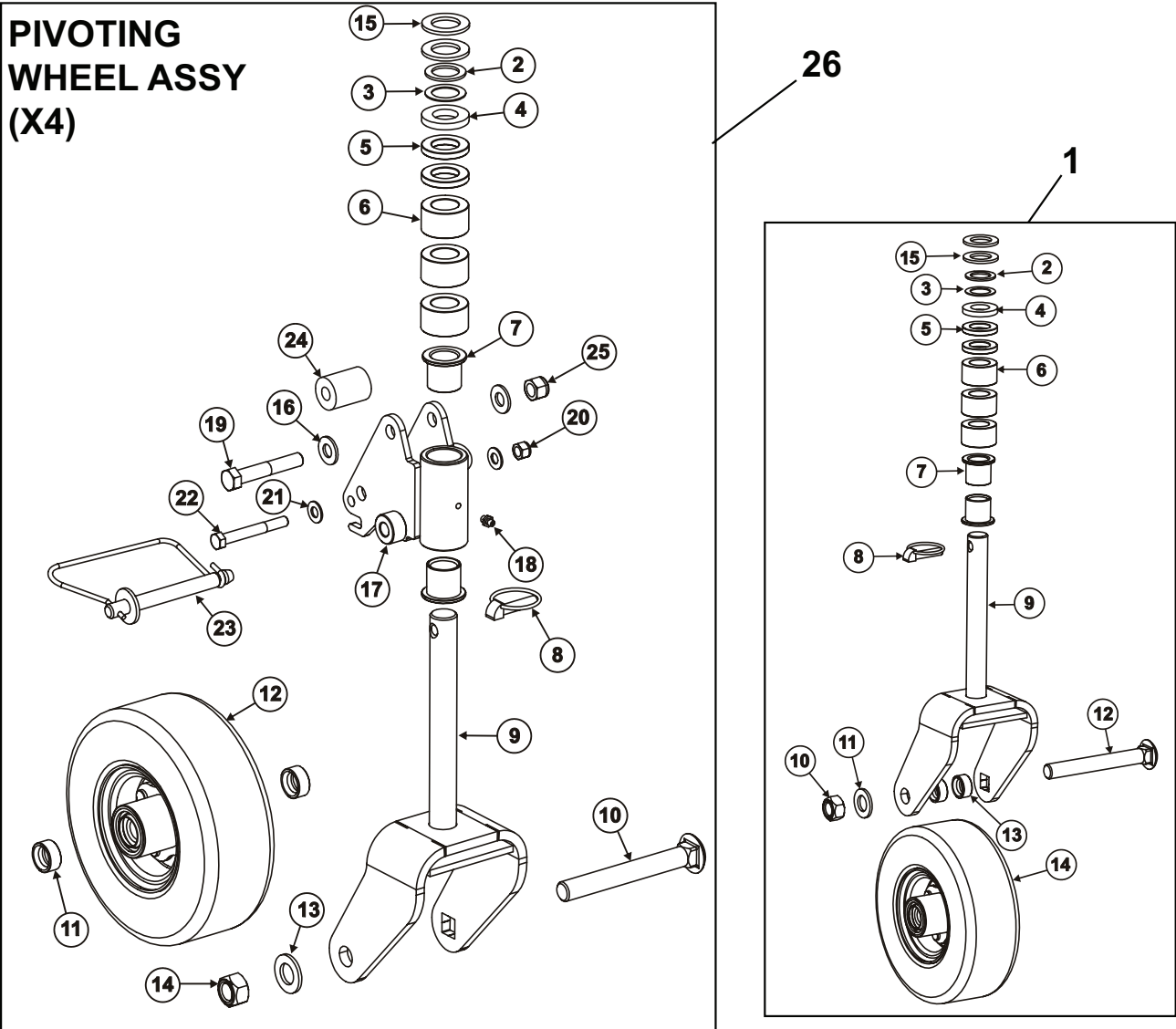
FIGURE 19

| ITEM | PART NO. | DESCRIPTION | QTY |
|------|-----------|---|-----|
| 1 | 4170885 | WHEEL WELDMENT, LEFT REAR 80EFS | 1 |
| | 4170893 | WHEEL WELDMENT, RIGHT REAR 80EFS | 1 |
| 2 | 64018-54 | BOLT, 5/8-11 X 2 GRADE 5 CARRIAGE | 2 |
| 3 | 64236-04 | NUT, 5/8-11 FLEXLOC | 2 |
| 4 | 4170770 | SPACER, 1.13 OD X .75 ID X .5 | 1 |
| 5 | 4170753 | SPACER, 3/4" AXLE BOLT | 1 |
| 6 | 4170724 | WHEEL ASSEMBLY, 9 X 3.5 RELIANCE DM | 1 |
| | | SEE FIGURE 21 | |
| 7 | 64018-52 | BOLT, 3/4-10 X 6" GRADE 5 CARRIAGE | 1 |
| 8 | 4170924 | NUT, 3/4-10 STOVER SWAGED | 1 |
| 9 | 64123-317 | BOLT, 1/2-13 X 6 1/2" HEX HEAD GRADE 5 | 1 |
| 10 | 64151-37 | NUT, 1/2-13 HALF NYLOC | 1 |
| 11 | 4170886 | SPACER, 5/16" THK DECK HEIGHT | 1 |
| 12 | 4170887 | ROD END, 1/2-20 FEMALE | 1 |
| 13 | 4170886 | SPACER, 5/16" THK DECK HEIGHT | 12 |
| 14 | 4170888 | SPACER, 5/16" THK KNURLED | 5 |
| 15 | 4170889 | SPRING, .72 X 1.5 X .063 COMPRESSION | 2 |
| 16 | 64151-43 | NUT, 1/2-20 HEX JAM | 3 |
| 17 | 64163-118 | WASHER, 1/2" SAE FLAT | 1 |
| 18 | 4170890 | ROD, DECK LIFT LOCK | 1 |
| 19 | 64151-44 | NUT, 1/2-20 JAM NYL LOCK | 1 |
| 20 | 4170884 | WHEEL ASSEMBLY, LEFT REAR | 1 |
| | | (INCLUDES ITEMS 1-19) | |
| 21 | 4170892 | WHEEL ASSEMBLY, RIGHT REAR | 1 |
| | | (INCLUDES ITEMS 1-19) | |
| 22 | 4170891 | ROD ASSY, REAR DECK HEIGHT | 1 |
| | | (INCLUDED ITEMS 12-19) | |

PIVOTING WHEEL ASSY

FLEX
DECK
MOWER

FIGURE 20



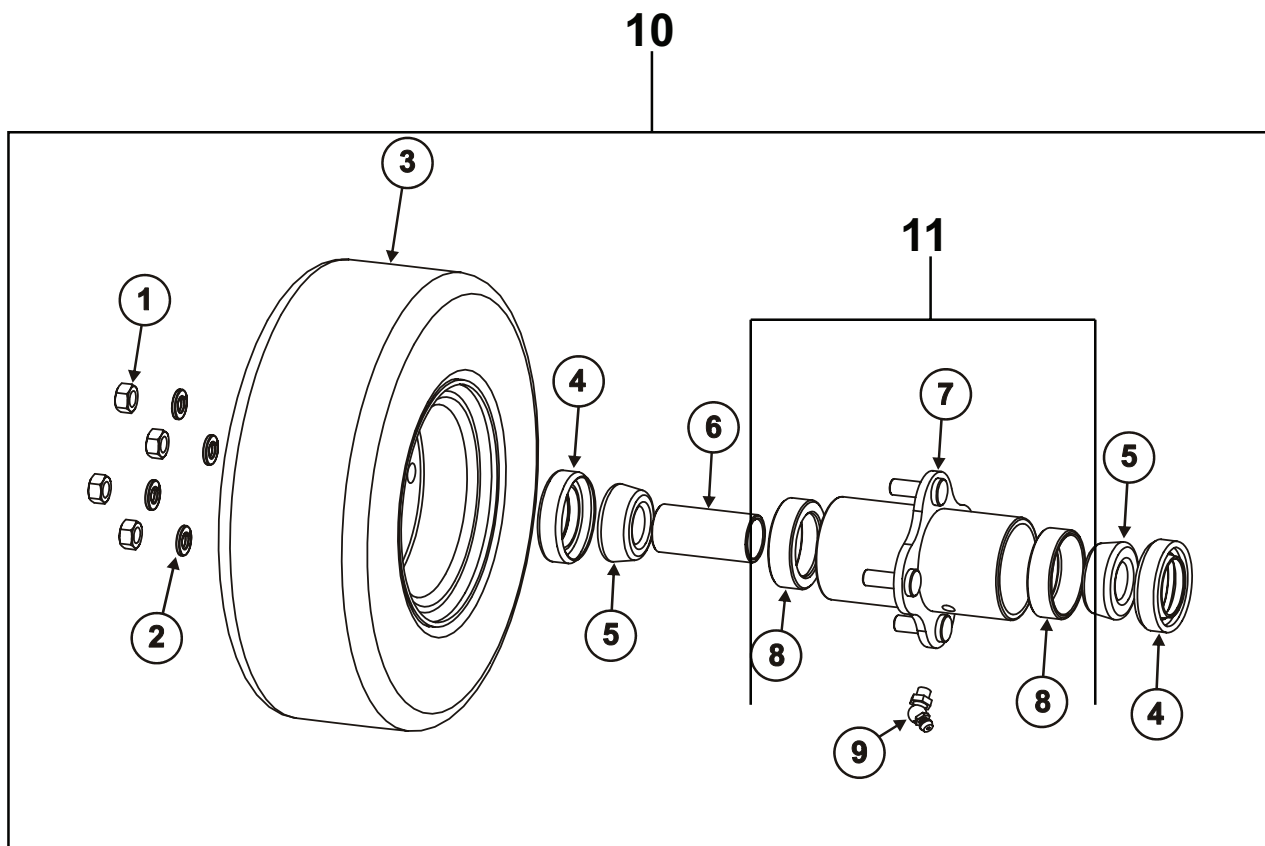
FLEX DECK MOWER

PIVOTING WHEEL ASSY

FIGURE 20

ITEM PART NO. DESCRIPTION QTY

| | | | |
|----|-----------|---|---|
| 1 | 4170895 | WHEEL YOKE ASSEMBLY, 9" | 5 |
| | | (INCLUDES ITEMS 2-15) | |
| 2 | 4170932 | WASHER, 1" ID .06 SS SHIM | 1 |
| 3 | 4170931 | WASHER, 1" ID .03 SS SHIM | 1 |
| 4 | 4170759 | SPRING, WHEEL YOKE 1-0 URETHANE | 1 |
| 5 | 64163-07 | SPACER, 1" ID X 1-3/4" OD X 1/4" | 2 |
| 6 | 4170751 | SPACER, 1 3/4" OD X 1 1/16" ID X 1" | 3 |
| 7 | 4170768 | BUSHING, 1" ID X 1-1/4" OD X 1-1/4" FLANGED | 2 |
| 8 | 4170925 | PIN, 3/8" DIA LYNCH LOCKING | 1 |
| 9 | 4170896 | YOKE WELDMENT, 9" | 1 |
| 10 | 64018-52 | BOLT, 3/4-10 X 6" CARRIAGE GRADE 5 | 1 |
| 11 | 4170753 | SPACER, 3/4" AXLE BOLT | 2 |
| 12 | 4170724 | WHEEL ASSEMBLY, 9" X 3.5" SOLID DM | 1 |
| | | SEE FIGURE 21 | |
| 13 | 64163-110 | WASHER, 3/4" SAE FLAT | 1 |
| 14 | 4170924 | NUT, 3/4-10 STOVER SWAGED | 1 |
| 15 | 64163-84 | WASHER, 1-1/16" X 1-3/4" X 1/8" | 2 |
| 16 | 64163-118 | WASHER, 1/2" SAE FLAT | 2 |
| 17 | 4170897 | YOKE WELDMENT, PIVOTING | 1 |
| 18 | 85010N | FITTING, 1/4-28 STRAIGHT GREASE | 1 |
| 19 | 64123-31 | BOLT, 1/2-13 X 3" HEX HEAD GRADE 5 | 1 |
| 20 | 64229-03 | NUT, 3/8-16 HEX NYLOC | 1 |
| 21 | 64163-61 | WASHER, 3/8" FLAT SAE | 2 |
| 22 | 64123-75 | BOLT, 3/8-16 X 3" HEX HEAD GRADE 5 | 1 |
| 23 | 4170898 | PIN, 1/2" DIA X 3 1/2" SNAP SPRING | 1 |
| 24 | 4170757 | BUSHING, URETHANE SPRING | 1 |
| 25 | 64229-05 | NUT, 1/2-13 NYLON HEX LOCK | 1 |
| 26 | 4170894 | YOKE ASSEMBLY, PIVOTING WHEEL | 4 |
| | | (INCLUDES ITEMS 1, 16-25) | |



FLEX DECK MOWER

9"x3.5" WHEEL ASSY

FIGURE 21

| ITEM | PART NO. | DESCRIPTION | QTY |
|------|----------|--|------|
| 1 | 64025-02 | NUT, 5/16-18 HEX | 4 |
| | | (TORQUE TO 145-170 IN-LBS) | |
| 2 | 64006-02 | WASHER, 5/16" SPLIT LOCK | 4 |
| 3 | 4170724 | TIRE, CARLISLE RELIANCE NO-FLAT SMOOTH | 1 |
| | | (NOT SOLD SEPARATELY) | |
| 4 | 4170732 | SEAL, 1 1/8" ID TRB BEARING | 2 |
| 5 | 4170731 | BEARING, TAPERED ROLLER 3/4" ID | 2 |
| 6 | 4170754 | SPACER, 3/4" WHEEL BEARING | 1 |
| 7 | 4170841 | HUB, 9/11" DEMOUNTABLE | 1 |
| 8 | 4170733 | BEARING RACE INSERT, 3/4" TRB | 2 |
| 9 | 38388 | FITTING, 1/4-28 45 DEG. GREASE | 1 |
| 10 | 4170724 | WHEEL ASSEMBLY, 9" X 3.5" RELIANCE DM | (X5) |
| | | (INCLUDES ITEMS 1-9) | |
| 11 | 4170875 | HUB ASSEMBLY, 9/11" DEMOUNTABLE | 1 |
| | | (INCLUDES ITEM 7-9) | |

NOTE: Wheels are shipped unlubricated from the factory. Insure proper lubrication, bearing preload-
ing, and torque specifications are met. Use Loctite on all bolts. Tighten hub nuts to 145-170 in-lbs.

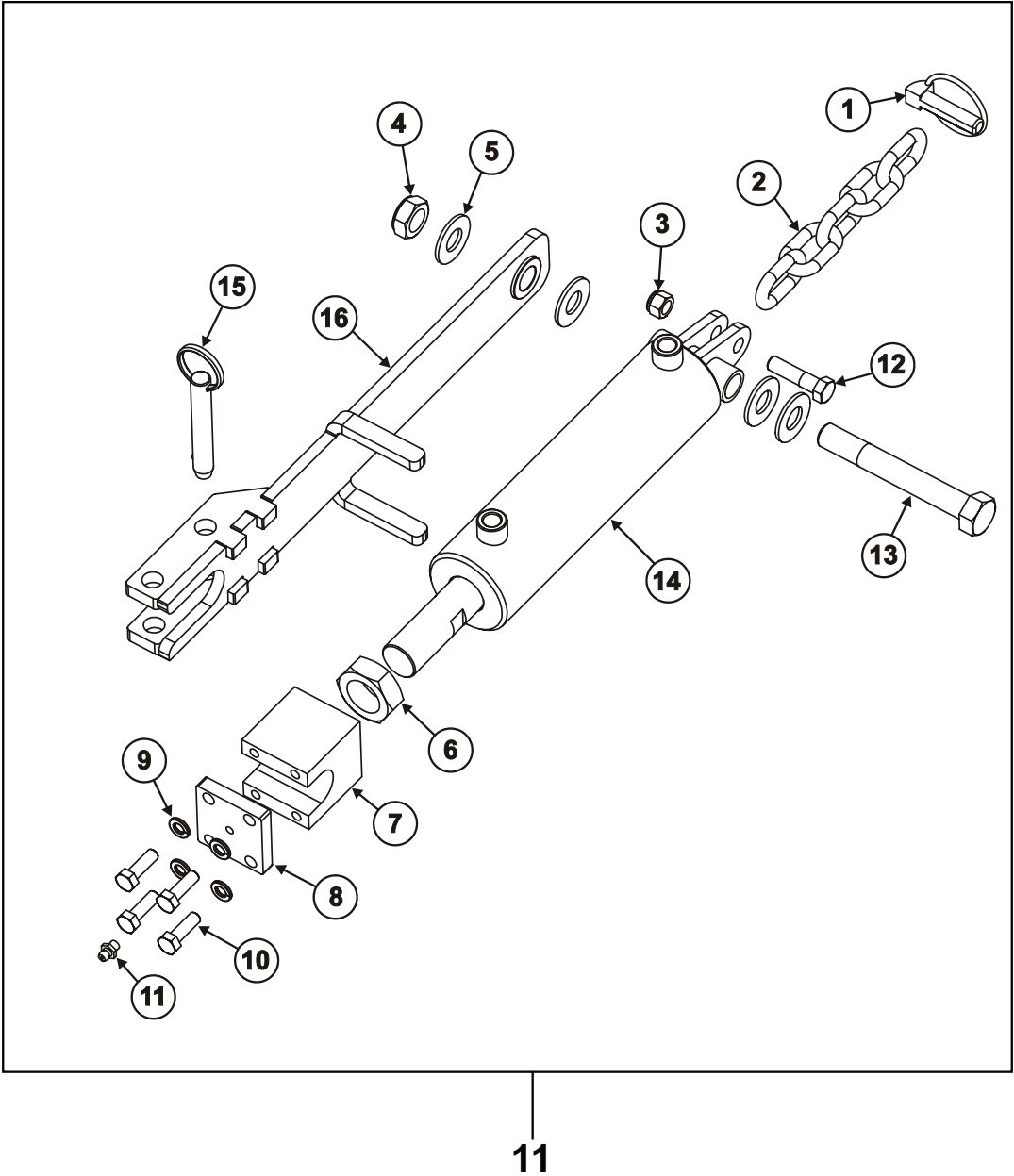
NOTE: All wheels should be lubricated, insuring grease passes through the seals, after every 8 hours
of operation. See Operator's manual.

NOTE: When checking bearing preload, wheels should be placed on the spindles loose enough to spin
freely only one complete revolution when spun by hand. Insure spacers are properly installed.

DECK LIFT CYLINDER ASSY

FLEX
DECK
MOWER

FIGURE 22



FLEX DECK MOWER

DECK LIFT CYLINDER ASSY

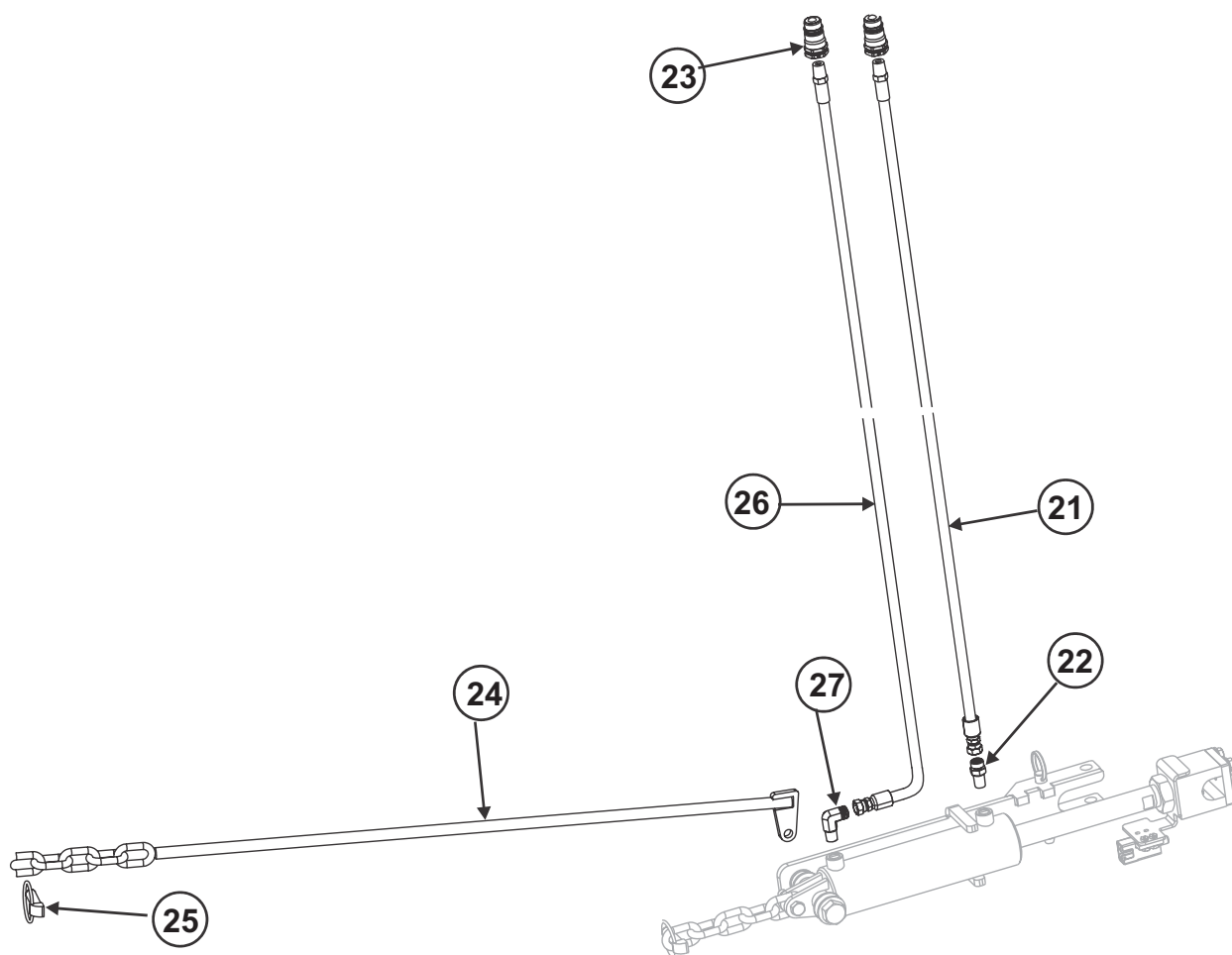
FIGURE 22

| ITEM | PART NO. | DESCRIPTION | QTY |
|------|-----------|--|-----|
| 1 | 4170925 | PIN, 7/16" DIA LYNCH, LOCKING | 1 |
| 2 | 4170900 | CHAIN, 5/16" X 5 LINKS | 1 |
| 3 | 64229-03 | NUT, 3/8-16 HEX NYLOC | 1 |
| 4 | 64151-42 | NUT, 5/8-11 JAM NYL LOCK | 1 |
| 5 | 64163-119 | WASHER, 5/8" SAE FLAT | 4 |
| 6 | 64151-40 | NUT, 1-14 HEX JAM | 1 |
| 7 | 4170902 | BLOCK, HYDRAULIC CYLINDER PIVOT | 1 |
| 8 | 4170903 | LOCK PLATE, HYDRAULIC CYLINDER | 1 |
| 9 | 64006-02 | WASHER, 5/16" SPLIT LOCK | 4 |
| 10 | 64123-68 | BOLT, 5/16-18 X 1" HEX HEAD GRADE 5 | 4 |
| 11 | 85010N | FITTING, 1/4-28 STRAIGHT GREASE | 1 |
| 12 | 64123-87 | BOLT, 3/8-16 X 1 3/4" HEX HEAD GRADE 5 | 1 |
| 13 | 64123-323 | BOLT, 5/8-11 X 4 1/2" HEX HEAD GRADE 8 | 1 |
| 14 | 4170904 | CYLINDER, HYDRAULIC DECK LIFT | 1 |
| 15 | 4137069 | PIN, 1/2" DIA X 2 1/2" DETENT | 1 |
| 16 | 4170905 | LOCK WELDMENT, DECK LATCH | 1 |
| 17 | 4170899 | CYLINDER ASSEMBLY, DECK LIFT | 1 |
| | | (INCLUDES ITEMS 1-16) | |

HOSE ASSY AND LINK ROD

FIGURE 23

**FLEX
DECK
MOWER**



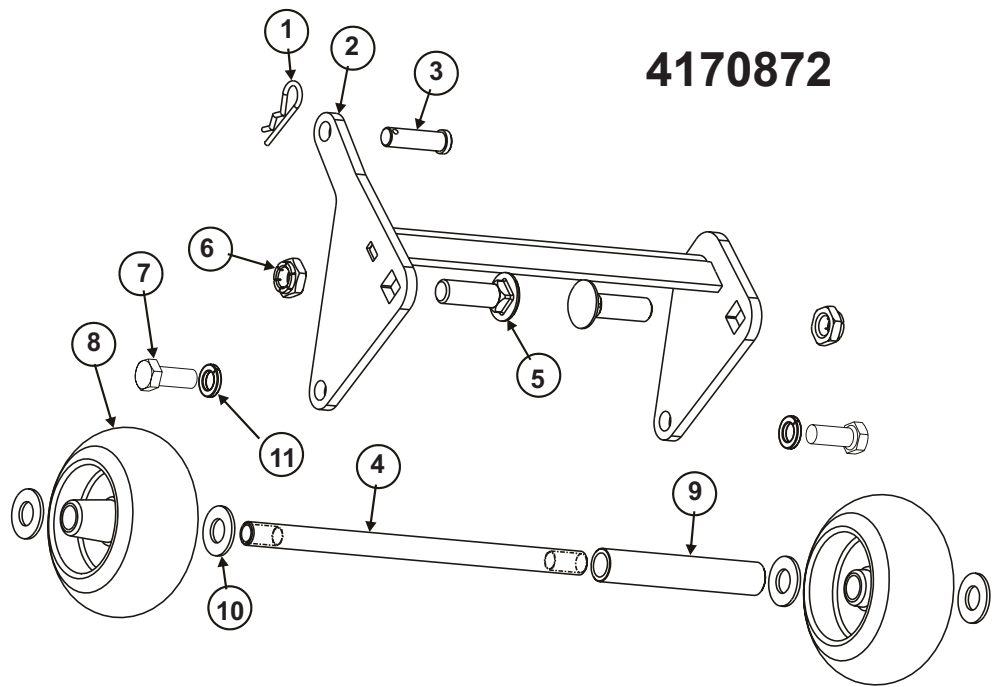
FLEX DECK MOWER

HOSE ASSY AND LINK ROD

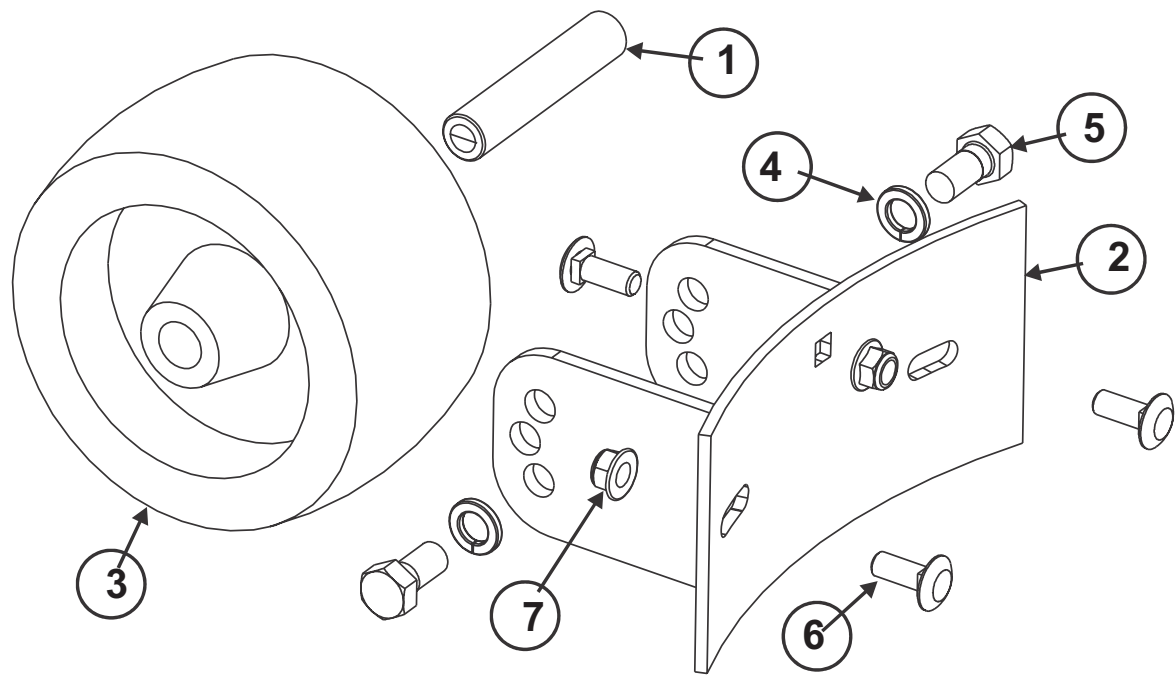
FIGURE 23

| ITEM | PART NO. | DESCRIPTION | QTY |
|------|------------|------------------------------------|-----|
| 21 | 4170727 | HOSE ASSEMBLY, 1/4" HP X 80" LONG | 1 |
| 22 | 4170906 | HYD FITTING, 4 ORFS X 4 MPT ST | 1 |
| 23 | 4170725 | FITTING, HYDRAULIC QD MALE STEINER | 2 |
| 24 | 4170907 | ROD WELDMENT, DECK LIFT | 1 |
| 25 | 4170925 | PIN, 7/16" DIA LYNCH, LOCKING | 1 |
| 26 | 4170729 | HOSE ASSEMBLY, 1/4" HP X 76" LONG | 1 |
| 27 | 4175270-62 | FITTING, 4 ORFS - 4 MPT 90 | 1 |

FIGURE 24



4175270-83



FLEX DECK MOWER

ANTI SCALP ROLLERS (4170872 & 4175270-83)

FIGURE 24

| ITEM | PART NO. | DESCRIPTION | QTY |
|------|----------|-------------|-----|
|------|----------|-------------|-----|

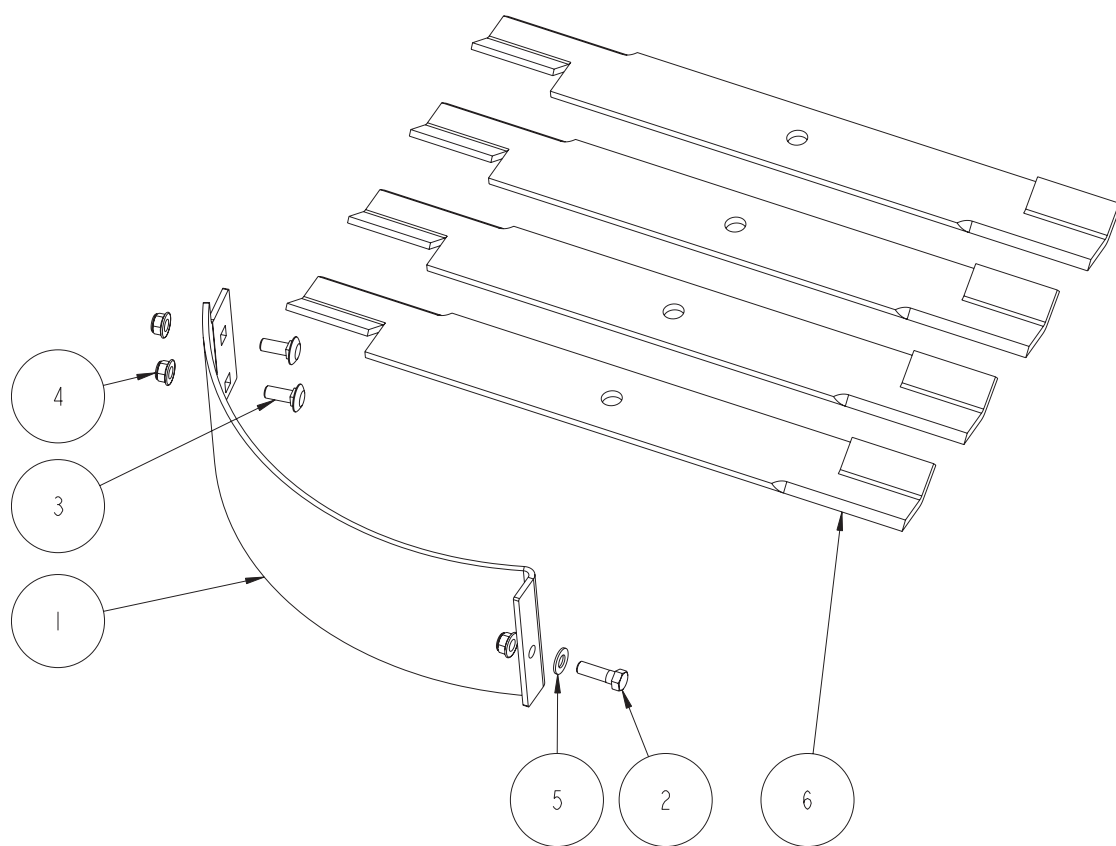
4170872

| | | | |
|----|-----------|--|---|
| 1 | 64168-1 | PIN, 1/8" X 1 13/16" SAFETY | 1 |
| 2 | 4170873 | FRAME WELDMENT, 521E/Z ANTI-SCALP | 1 |
| 3 | 64188-32 | PIN, 1/2" X 1 3/4" CLEVIS YZC | 1 |
| 4 | 4170874 | AXLE ROD, 3300 ANTI-SCALP ROLLER | 1 |
| 5 | 64018-54 | BOLT, 5/8-11 X 2" GRADE 5 CARRIAGE | 2 |
| 6 | 64236-04 | NUT, 5/8-11 FLEXLOC | 2 |
| 7 | 64123-39 | BOLT, 1/2-13 X 1 1/4" HEX HEAD GRADE 5 | 2 |
| 8 | 4170739 | WHEEL, ANTI-SCALP 5-5/8" HOLE | 2 |
| 9 | 4170876 | SLEEVE, 7/8" OD X 5" LONG BUSHING | 1 |
| 10 | 64163-119 | WASHER, 5/8" SAE FLAT | 4 |
| 11 | 4170930 | WASHER, 1/2" SPLIT LOCK | 2 |

4175270-83

| | | | |
|---|------------|--|---|
| 1 | 4172690-02 | AXLE ROD, 3300 ANTI-SCALP ROLLER | 1 |
| 2 | 4172690-03 | BRACKET WELDMENT, 3300 ANTI-SCALP | 1 |
| 3 | 4172690-04 | WHEEL, ANTI-SCALP 6" X 3.25" X 3/4" ID | 1 |
| 4 | 4170930 | WASHER, 1/2" SPLIT LOCK | 2 |
| 5 | 4172690-01 | BOLT, 1/2-13 X 1" HEX HEAD FULL THREAD | 2 |
| 6 | 64018-53 | BOLT, 3/8-16 X 1" CARRIAGE GRADE 5 | 3 |
| 7 | 64268-03 | NUT, 3/8-16 FLANGED HEX NYLOCK | 3 |

FIGURE 25



FLEX DECK MOWER

-MULCHING BAFFLE KIT - 75-71313

FIGURE 25

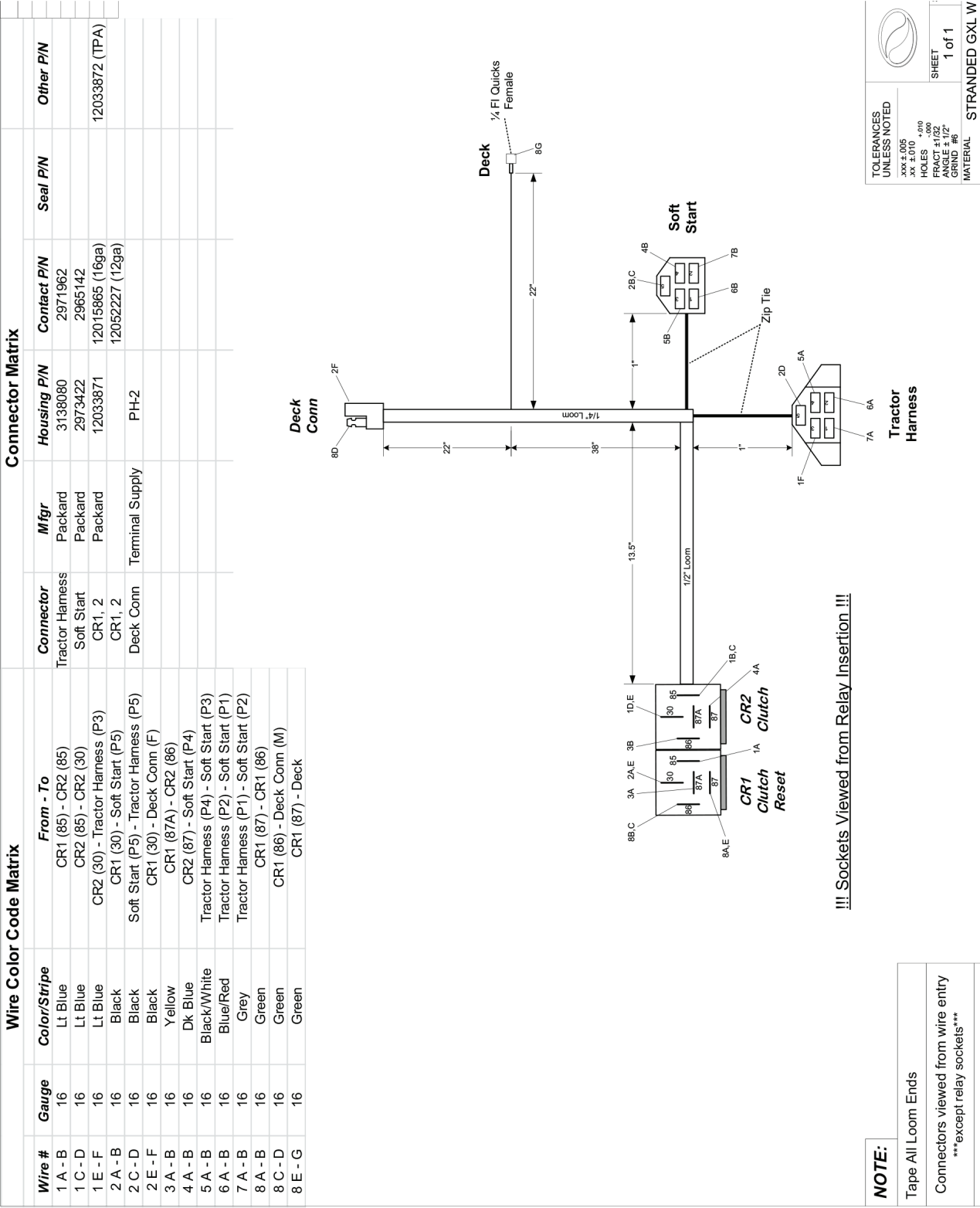
ITEM PART NO. DESCRIPTION QTY

| | | | |
|---|----------|--|---|
| 1 | 4170908 | MULCHING BAFFLE, 80EFS | 1 |
| 2 | 64123-16 | BOLT, 3/8-16 X 1 1/4" HEX HEAD GRADE 5 | 1 |
| 3 | 64018-3 | BOLT, 3/8-16 X 1" CARRIAGE GRADE 5 | 2 |
| 4 | 64268-03 | NUT, 3/8-16 FLANGED HEX NYLON LOCK | 3 |
| 5 | 64163-61 | WASHER, 3/8" SAE FLAT | 1 |
| 6 | 4175861 | BLADE-21" LOW LIFT | 4 |
| | 75-71313 | BAFFLE KIT, 80EFS MULCHING | |
| | | (INCLUDES ITEMS 1-6) | |
| | | | |

WIRE HARNESS SCHEMATIC

FLEX
DECK
MOWER

FIGURE 26

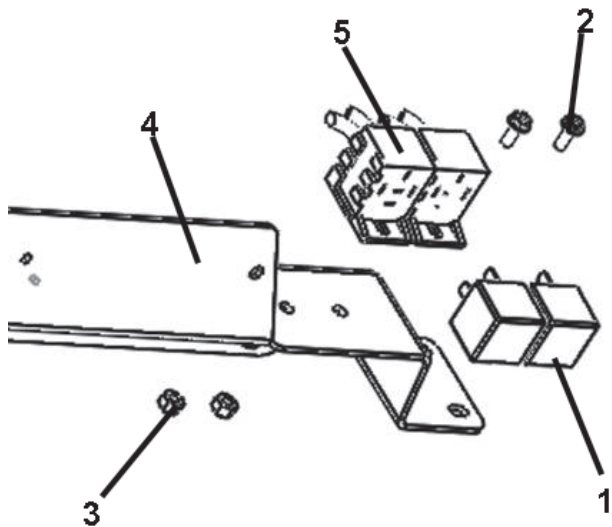


**FLEX
DECK
MOWER**

WIRE HARNESS ASSEMBLY

FIGURE 27

| ITEM | PART NO. | DESCRIPTION | QTY |
|------|------------|--|-----|
| 1 | 4170723 | RELAY, 40A 12V AUTOMOTIVE | 2 |
| 2 | 64152-46 | SCREW, 10-24 X 1/2" HH SS MACHINE | 2 |
| 2 | 64229-10 | NUT, #10-24 HEX SELF-LOCKING | 2 |
| 4 | 4173443.7 | BRKT-OIL RES & RELAYS | 1 |
| 5 | 4175270-01 | HARNESS -450 FLEX DECK | 1 |
| | 4170728 | HARNESS-440 (NOT INCLUDED) ORDER SEPERATELY | |



SCHILLER GROUNDS CARE, INC.
ONE BOB-CAT LANE
P.O. BOX 469
JOHNSON CREEK, WI 53038
920-699-2000
www.schillergc.com



©Schiller Grounds Care, Inc. 2010