



**MODEL:**

**75-71305B**

**FLEX DECK MOWER -80"**

**S/N 0200 and Up**

**MAN 4175399**  
Rev. A 08-2017

OPERATOR'S MANUAL 4175407



**SCHILLER**

**GROUNDS  
CARE**

**PARTS MANUAL**

**CALIFORNIA**

**Proposition 65 Warning**

Diesel engine exhaust and some of its constituents are known to the State of California to cause cancer, birth defects and other reproductive harm.

**⚠ WARNING**

The engine exhaust from this product contains chemicals known to the State of California to cause cancer, birth defects or other reproductive harm.

**Californie Proposition 65 Avertissement**

Les échappements des moteurs diesel et certains de leurs composés sont reconnus par l'Etat de Californie pour être cancérigènes, provoquer des défauts congénitaux et d'autres dangers en matière de reproduction.

**California Advertencia**

**⚠ AVERTISSEMENT**

L'émission du moteur de ce matériel contient des produits chimiques que l'Etat de Californie considère être cancérigènes, provoquer des défauts congénitaux et d'autres dangers en matière de reproduction.

**de la Proposicion 65**

El estado de California hace saber que los gases de escape de los motores diesel y algunos de sus componentes producen cáncer, defectos de nacimiento y otros daños en el proceso de reproducción humana.

**⚠ ADVERTENCIA**

El estado de California hace saber que los gases de escape de este producto contienen productos químicos que producen cáncer, defectos de nacimiento y otros daños en el proceso de reproducción humana.

**CALIFORNIA**

**Proposition 65 Warning**

Battery posts, terminals, wiring insulation, and related accessories contain lead and lead compounds, chemicals known to the State of California to cause cancer and birth defects or other reproductive harm.

**WASH HANDS AFTER HANDLING.**

# FLEX DECK MOWER

## IMPORTANT MESSAGE

Thank you for purchasing this Schiller Grounds Care, Inc. product. You have purchased a world class product, one of the best designed and built anywhere.

This product comes with an Owner/Operator's Manual. The useful life and good service you receive from this product depends to a large extent on how well you read and understand this manual. Treat this product properly and adjust it as instructed, and it will give you many years of reliable service.

See a Schiller Grounds Care, Inc. dealer for any service or parts needed. Schiller Grounds Care, Inc. service ensures that you continue to receive the best results possible from Schiller Grounds Care, Inc. products. You can trust Schiller Grounds Care, Inc. replacement parts because they are manufactured with the same high precision and quality as the original parts.

Schiller Grounds Care, Inc. designs and builds its equipment to serve many years in a safe and productive manner. For longest life, use this product only as directed in the manual, keep it in good repair and follow safety warnings and instructions. You'll always be glad you did.

**Schiller Grounds Care, Inc.**  
**One Bob Cat Lane**  
**Johnson Creek, WI 53038-0469**

TABLE OF CONTENTS	FIGURES	PAGE
DESCRIPTION / SPECIFICATIONS / BELT CHART .....		4
SAFETY .....		5-8
PARTS SECTION .....		9
MOWER DECALS .....	FIGURE 1 .....	10, 11
BELTS & DECK WELDMENTS ASSEMBLY .....	FIGURE 2 .....	12, 13
DECK 1 WELDMENT HARDWARE & COVERS .....	FIGURE 3 .....	14, 15
DOUBLE PULLEY SPINDLE DECK 1 .....	FIGURE 4 .....	16, 17
SPINDLE HOUSING .....	FIGURE 5 .....	18, 19
IDLER ASSEMBLY DECK 1 .....	FIGURE 6 .....	20, 21
WHEEL YOKE ASSEMBLY DECK 1 .....	FIGURE 7 .....	22, 23
DECK 2 WELDMENT & HARDWARE .....	FIGURE 8 .....	24, 25
DECK 2 COVERS .....	FIGURE 9 .....	26, 27
DECK 2 DOUBLE PULLEY SPINDLE .....	FIGURE 10 .....	28, 29
DECK 2 SPINDLE HOUSING .....	FIGURE 11 .....	30, 31
DECK 3 WELDMENT & HARDWARE .....	FIGURE 12 .....	32, 33
DECK 3 TENSIONER ASSEMBLY .....	FIGURE 13 .....	34, 35
DECK 3 COVERS .....	FIGURE 14 .....	36, 37
DECK 3 TRAP DOORS .....	FIGURE 15 .....	38, 39
DECK 3 PUSH ARM ASSEMBLY .....	FIGURE 16 .....	40, 41
DECK 3 SINGLE PULLEY ASSEMBLY .....	FIGURE 17 .....	42, 43
DECK 3 SPINDLE HOUSING .....	FIGURE 18 .....	44, 45
ANTI-SCALP ROLLERS .....	FIGURE 19 .....	46, 47
DECK 4 WELDMENT & HARDWARE .....	FIGURE 20 .....	48, 49
DECK 4 PULLEY ASSEMBLY .....	FIGURE 21 .....	50, 51
EXTENDED CHUTE .....	FIGURE 22 .....	52, 53
LEFT REAR WHEEL ASSEMBLY .....	FIGURE 23 .....	54, 55
RIGHT REAR WHEEL ASSEMBLY .....	FIGURE 24 .....	56, 57
DECK 4 WHEEL YOKE ASSEMBLY .....	FIGURE 25 .....	58, 59
9" X 3.5" WHEEL ASSEMBLY .....	FIGURE 26 .....	60, 61
DECK LIFT CYLINDER & HOSE ASSEMBLIES .....	FIGURE 27 .....	62, 63
WIRING SCHEMATIC .....	FIGURE 28 .....	64
WIRE HARNESS ASSEMBLY .....	FIGURE 29 .....	65
MULCHING BAFFLE KIT (OPTIONAL) .....	FIGURE 30 .....	66, 67

## DESCRIPTION / SPECIFICATIONS

# FLEX DECK MOWER

### DESCRIPTION

The Flex Deck is designed specifically for finish mowing applications. One of the unique benefits of the unit's cutting system is its ability to float over contours that are impossible for other wide-area mowers to cut accurately. The Flex Deck offers a high level of maneuverability.

Although the Flex Deck is an industrial-quality mower, do not attempt to use it to cut extremely long grass or areas heavy with brush or debris.

### SPECIFICATIONS

Cutting Width	80"	
Mower Deck Configuration	(4) 21" Articulating Mower Decks	
Blades	(4) 21" High Lift-Standard	4170730
	(4) 21" Low Lift-Order Separately	Page 17
	(4) 21" Mulching-Order Separately	Page 17
	(4) 21" Low Lift Ultra-Order Separately	Page 17
Blade Tip Speed	Max 16,575 FPM	
Mower Deck Height Range	1" to 4-1/2"	
Operating Environment	Outdoor Use ONLY	
Mower Deck Gauge Wheels	(7) 9" X 3.5" Reliance DM	4170724
Mower Deck Belts	(1) Belt, Main Deck	4175125
	(1) Belt, Deck 1	4175332
	(1) Belt, Drive	4174756
Mulching Baffle Kit	Optional Includes 21" Low Lift Blade	75-71313
450 Harness Kit	Standard with Deck	4175270-01
440 Harness Kit	Not Included-Order Separately	4170728

## NOTICE !!!

Unauthorized modifications may present **extreme** safety hazards to operators and bystanders and could also result in product damage.

Schiller Grounds Care, Inc. strongly warns against, rejects and disclaims any modifications, add-on accessories or product alterations that are not designed, developed, tested and approved by Schiller Grounds Care, Inc. Engineering Department. Any Schiller Grounds Care, Inc. product that is altered, modified or changed in any manner not specifically authorized after original manufacture—including the addition of “after-market” accessories or component parts not specifically approved by Schiller Grounds Care, Inc.—will result in the Schiller Grounds Care, Inc. Warranty being voided.

Any and all liability for personal injury and/or property damage caused by any unauthorized modifications, add-on accessories or products not approved by Schiller Grounds Care, Inc. will be considered the responsibility of the individual(s) or company designing and/or making such changes. Schiller Grounds Care, Inc. will vigorously pursue full indemnification and costs from any party responsible for such unauthorized post-manufacture modifications and/or accessories should personal injury and/or property damage result.



This symbol means:  
**ATTENTION!**  
**BECOME ALERT!**

Your safety and the safety of others is involved.

### Signal word definitions:

The signal words below are used to identify levels of hazard seriousness. These words appear in this manual and on the safety labels attached to Schiller Grounds Care, Inc. machines. For your safety and the safety of others, read and follow the information given with these signal words and/or the symbol shown above.



**DANGER** indicates an imminently hazardous situation which, if not avoided, **WILL** result in death or serious injury.



**WARNING** indicates a potentially hazardous situation which, if not avoided, **COULD** result in death or serious injury.



**CAUTION** indicates a potentially hazardous situation which, if not avoided, **MAY** result in minor or moderate injury. It may also be used to alert against unsafe practices or property damage.

**CAUTION** used without the safety alert symbol indicates a potentially hazardous situation which, if not avoided, **MAY** result in property damage

***Schiller Grounds Care, Inc.***

One Bobcat Lane  
Johnson Creek, WI 53038 U.S.A  
Phone: 920-699-2000  
Fax: 920-699-3683

MODEL NUMBER

SERIAL NUMBER

**MODEL NUMBER:** This number appears on sales literature, technical manuals and price lists.

**SERIAL NUMBER:** This number appears only on your mower. It contains the model number followed consecutively by the serial number. Use this number when ordering parts or seeking warranty information.

## GENERAL SAFETY



This cutting machine is capable of amputating hands and feet and throwing objects. Failure to observe the following safety instructions could result in serious injury or death.

- Do not allow anyone to operate the 80" Flex Deck Mower without first reading and understanding this operator's manual in its entirety. Never allow children to operate the 80" Flex Deck Mower. Never operate the 80" Flex Deck Mower when children are present.
- Operate all controls from the operator's seat, (if so equipped). NO RIDERS.
- NEVER operate the deck with any safety covers removed!
- Work safely! Follow all safety rules! A careful operator is the best insurance against accidents!



- NEVER allow children to operate the deck.
- NEVER allow children near the deck.
- NEVER operate the machine around other people. Stop machine if anyone enters the area.



- Do not allow anyone to service or operate this machine while under the influence of alcohol or drugs.
- NEVER operate the deck without all safety covers properly installed and in good condition!
- ALWAYS stay well clear of blades and all moving parts while in operation!

## PRE-OPERATION SAFETY



- NEVER allow anyone to operate the deck without proper instruction! Any and all operators must be instructed in and capable of the safe operation of the deck, its attachments, and controls!
- KNOW the controls and how to stop the deck quickly in an emergency!
- READ the entire manual before attempting to operate the deck! Only allow persons who have read and understand the entire operator's manual to operate the deck!
- Always wear relatively tight and belted clothing to avoid entanglement in moving parts. Wear sturdy rough-soled work shoes, as well as protective equipment for the eyes, hands, hearing and head. Never operate the deck or related equipment in bare feet, sandals, or sneakers. .
- Clear the cut area of stones, branches, balls or other debris that may be thrown and cause injury or damage.
- Verify that all safety decals are properly installed, visible, and legible.
- Always remove accumulated debris, fuel, or excess grease and oil from the drive unit engine area to avoid a fire hazard.
- Verify that the deck is properly mounted, set up, adjusted, and in good operating condition.
- Always perform the pre-operation equipment inspection and the appropriate maintenance schedule before operating the deck.
- Do not change the engine governor settings or over-speed the engine.

### OPERATION SAFETY



- Be sure that the parking brake is set before attempting to start the engine.
- Operate only in daylight or good artificial light (min. 200 Lux).
- Operate the 80" Flex Deck Mower only from the operator seat.
- Always wear ear protection when operating the 80" Flex Deck Mower.
- Never cut more than 1/3 of the grass length at one time since this 80" Flex Deck Mower is a finish mower.
- Be sure that all auxiliary equipment switches (blades, lights, etc.) are in the OFF position before attempting to start the engine. holes and hidden hazards.

Be sure your drive unit is equipped with a ROPS (*Roll Over Protection System*), and be sure to wear your seat belt.

- Never operate the deck without the grass chute or mulching plate installed and secure.
- Never operate the deck unless all covers, shields, and safety devices are installed and secure.
- Never permit any person other than the operator to ride or board the drive unit or deck at any time.  
**Never allow riders!**
- Never allow anyone near the drive unit or deck while operating. **Be sure that the area behind you is clear before operating in reverse!**
- Never allow anyone near or in the path of discharge.
- Never discharge in the direction of bystanders, vehicles, or buildings.
- Do not stop or start suddenly when going up or down a hill. Avoid operating on steep slopes.
- Do not mow in reverse unless absolutely necessary - and then only after careful and constant observation of entire area behind the drive unit and deck.

- Use extreme care and maintain minimum ground speed when transporting on a hillside or over rough ground, and when operating close to ditches, fences, or water.
- Reduce speed on slopes and in sharp turns to minimize potential tipping or loss of control. Use caution when changing directions on slopes.
- Be alert for holes in the terrain as well as any other hidden hazard. Always drive slowly over rough ground.
- Disengage the blades, stop the engine, set the parking brake, and remove the key before dismounting the drive unit or making any adjustments to the deck.
- Stop the drive unit immediately upon striking any obstruction. Disengage the blades, turn off the engine, set the parking brake, remove the key, and inspect the drive unit and deck for any damage. Always repair any damage before resuming operation of the deck.
- Never adjust the mower deck height or lift the deck into transport position while the blades are engaged.
- Never engage the blades with the mower decks raised into transport position.
- Never place your hands or feet under the deck while the engine is running.
- Stay well clear of any and all moving parts.
- Keep hands and feet away from the blades at all times during operation.
- Take all possible precautions when leaving the drive unit and deck unattended: disengage the blades, turn off the engine, set the parking brake, and remove the key anytime you leave the drive unit and deck unattended.
- If your drive unit is equipped with headlights and hazard lights, always activate them whenever crossing or accessing any roadways, driveways, or parking lots. Watch for oncoming traffic.
- Do not allow extended running of drive unit engine indoors - **exhaust fumes are deadly.**



## MAINTENANCE SAFETY



Fuel is explosive.

- Always use approved fuel containers.
- Never handle fuel by an open flame.
- Never use fuel as a solvent.
- Never fuel drive unit while unit is running.
- Never fuel drive unit indoors.
- Always clean up spilled fuel.
- Never smoke around fuel or while fueling.
- ALWAYS disengage the blades, turn off the engine, set the parking brake, and remove the key before performing any service to, maintenance on, or adjustments to the deck!
- Never perform maintenance on the deck when children are present.
- NEVER allow children on or around the deck.
- Always perform the appropriate maintenance schedule(s) in a timely fashion.
- Never allow anyone near any operator controls while performing adjustments, service or maintenance to the drive or the deck.
- Always use personal protection equipment such as eye, hand, head, and ear protection when performing any service or maintenance to the drive unit or deck.
- Keep the drive unit engine area free of accumulated debris, fuel, or excess grease and oil to reduce fire hazard.
- Keep the deck in good operating condition with all safety devices in place.
- Check the blades frequently. Verify that they are sharp, free of nicks and cracks, and securely fastened.
- Never run the machine in a closed area.
- Periodically tighten all bolts, nuts and screws. Verify that all fasteners are properly installed to ensure the drive unit and deck are in safe operating condition.

- Upon completing any maintenance or service function, verify that all safety guards and devices are properly installed before operating the drive unit or deck.
- Verify that all warning labels and decals are properly installed, visible, and legible.
- Always remove debris from the top and bottom of the deck after each use.

## STORAGE SAFETY



- NEVER allow the extended running of any engine indoors - Exhaust gasses contain carbon monoxide, an odorless and deadly poison!
- NEVER allow children on or around the deck.
- NEVER store the deck where accessible by children.
- Never store the drive unit with fuel in the tank inside a building where fumes could reach and open flame or a spark.
- Allow the drive unit engine to cool before storing in an enclosed area.
- Remove all accumulated debris from the drive unit, and both the top and the bottom of the deck before storing.
- Sand and paint chipped or scratched areas and repaint them to prevent rust during storage.
- Lubricate all moving parts of the drive unit and deck to prevent rust during storage.
- ALWAYS lock the safety pins on the raised deck.

## TRANSPORT SAFETY

- ALWAYS lock the safety pins on the raised deck.



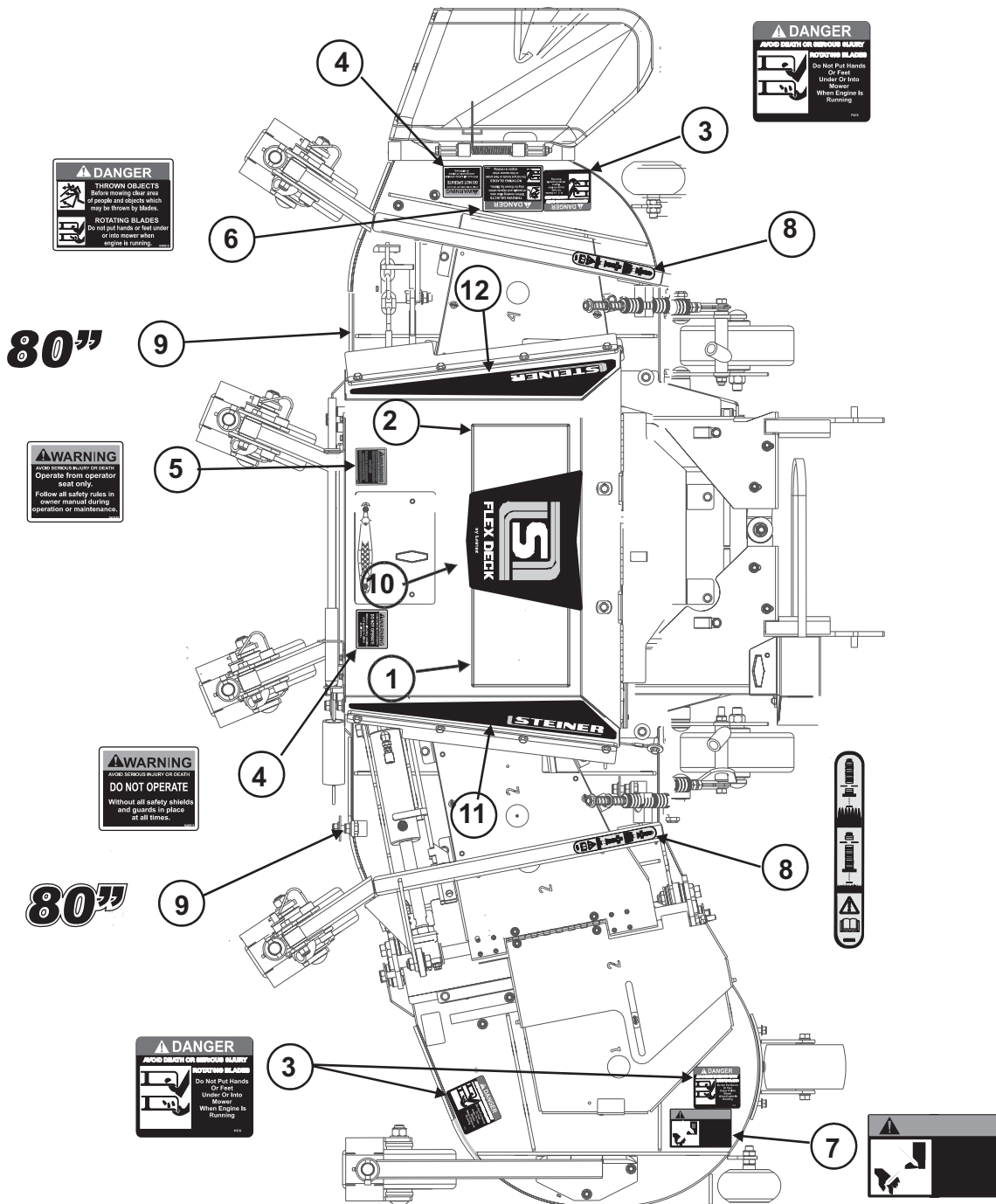


# **PARTS SECTION**

# MOWER DECALS

# FLEX DECK MOWER

FIGURE 1



# FLEX DECK MOWER

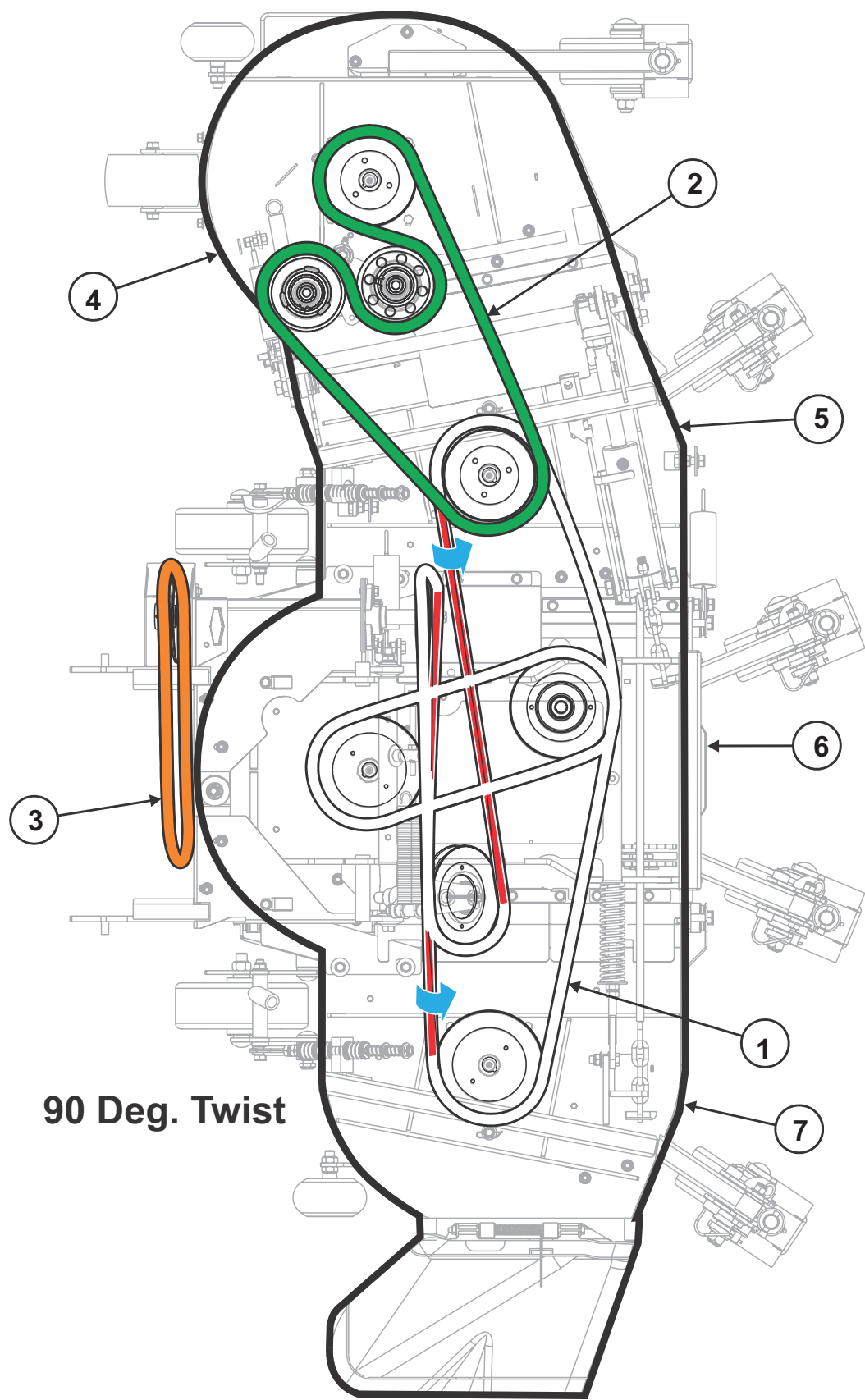
## MOWER DECALS

FIGURE 1

ITEM	PART NO.	DESCRIPTION	QTY
------	----------	-------------	-----

1	4175270-02	Decal, 80EFS2 Belt Installation	1
2	4175270-03	Decal, Belt Diagram 80EFS2 Deck	1
3	4170775	Decal, Danger - Rotating Blades	3
4	4170776	Decal, Warning Operate With Guards	2
5	4170777	Decal, Warning Operate From Seat	1
6	4170778	Decal, Danger, Thrown Objects/Arrow	1
7	4170780	Decal, Warning, Outer Decks	1
8	4170781	Decal, Equipment, Height Adj EF	2
9	4175270-85	Decal, 80in White	2
10	4175201	Decal, Hood Top, Steiner	1
11	4175202	Decal, Hood Left, Steiner	1
12	4175203	Decal, Hood Right, Steiner	1

FIGURE 2



# FLEX DECK MOWER

## BELTS & DECK WLDMNT ASSEMBLY

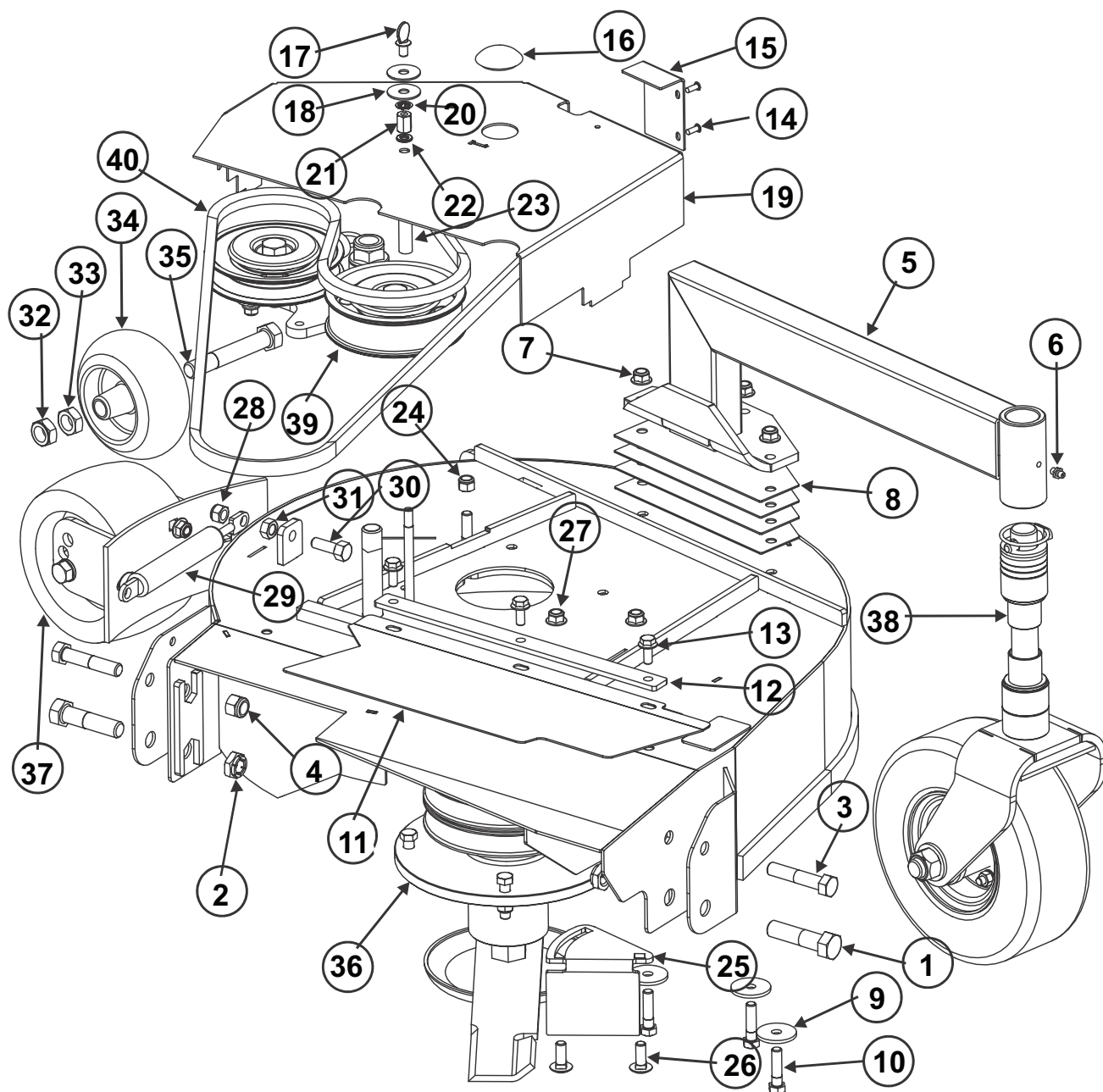
FIGURE 2

ITEM	PART NO.	DESCRIPTION	QTY
1	4175125	Belt, 80EFS2 Main Deck	1
2	4175332	Belt, #1 Deck 47-5423	1
3	4174756	Belt, BX43 Drive	1
4	4170912	Deck Weldment, #1 80EFS2	1
5	4170913	Deck Weldment,, #2 80EFS2	1
6	4175270-06	Deck Weldment,, #3 80EFS2	1
7	4170915	Deck Weldment,, #4 80EFS2	1
8*	4175270-01	Harness Assembly, 80EFS2 Deck	1
9*	4170750	Harness, Deck	1

\* NOT ILLUSTRATED

### FIGURE 3

# FLEX DECK MOWER



# FLEX DECK MOWER

## DECK WLDMNT 1 COVERS AND HARDWARE

FIGURE 3

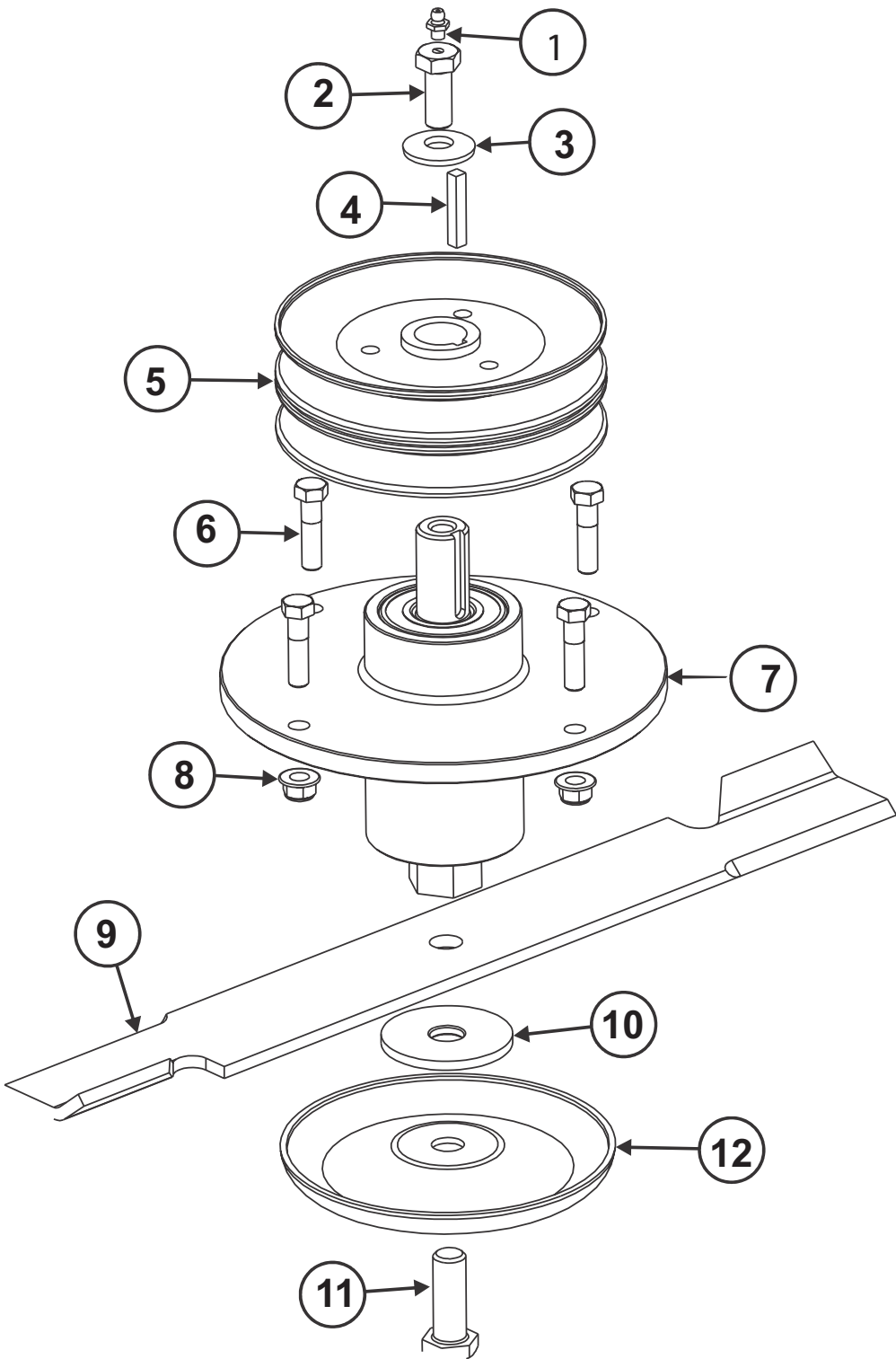
ITEM	PART NO.	DESCRIPTION	QTY
1	64123-168	Bolt, 5/8-11 x 2 1/2" Hex Head Grade 5	2
2	64236-04	Nut, 5/8-11 FlexLoc	2
3	64123-72	Bolt, 1/2-13 x 2 1/2" Hex Head Grade 5	2
4	64229-05	Nut, 1/2-13 Nyl Hex Lock	2
5	4170735	Rocker Weldment, #1 80EFS	1
6	85010N	Fitting, 1/4-28 Straight Grease	1
7	64268-03	Nut, 3/8-16 Flanged Hex Nylock	3
8	4170920	Shim, 1/5 Rocker	4
9	4170921	Washer, 3/8 x 1-1/2 x 1/8 Thk Hardened	3
10	64123-318	Bolt, 3/8-16 x 1-1/2 Hex Head Grade 8	3
11	4170761	Door, #1 Deck Trap	1
12	4170762	Clamp Plate, #1 Deck Trap Door	1
13	64123-54	Bolt, 5/16-18x3/4 Grade 5 FHCS Serrated	3
14	64215-03	Rivet, 3/16 Dia x 3/8-1/2 Grip Range Pop	2
15	4170763	Cover Plate	1
16	4170772	Cover, Hole Plug 1-3/8	1
17	4175270-63	Screw, 5/16-18x1/2 Thumb w/ Shoulder	3
18	4170773	Washer, Throttle Friction	2
19	4170764	Cover, #1 Deck	1
20	4175270-64	Nut, 5/16 Push	1
21	4175270-10	Nut, 5/16-18 Coupling, 11/16 Lg	1
22	64006-02	Washer, 5/16 Split Lock	1
23	4175270-11	Spacer, 1/2 ODx.334 Idx3-5/8 Lg	1
24	64229-03	Nut, 3/8-16 Hex Nyloc	1
25	4170767	Deflector Plate, #5 Deck Grass	1
26	64018-53	Bolt, 3/8-16x3/4 Carriage	2
27	64268-03	Nut, 3/8-16 Flanged Hex Nylock	2
28	64237-10	Nut, M10-1.25 Hex Nylok	1
29	4170791	Dampener, Hand Control	1
30	64206-08	Bolt, M10-1.25 x 30mm Hex Head FT 8.8	1
31	64207-10	Nut, M10-1.25 Free Zinc Plate	1
32	64151-42	Nut, 5/8-11 Jam Nyl Lock	1
33	64141-45	Nut, 5/8-11 Jam	1
34	4170739	Wheel, Anti-Scalp, 5-5/8" hole	1
35	64123-234	Bolt, 5/8-11 x 4 Hex Head Grade 5	1
36		Double Pulley Assembly, See pgs. 16-17 for Parts Breakdown	1
37	4175270-83	Anti-Scalp Roller Assembly, 100	1
38		Wheel Yoke Assembly 9 In See pgs. 22-23 for Parts Breakdown	1
39		Idler Assembly, 521 See pgs. 20-21 for Parts Breakdown	1
40	4175332	Belt, #1 Deck 10-1647	1



**DOUBLE PULLEY SPINDLE**

**FLEX  
DECK  
MOWER**

**FIGURE 4**



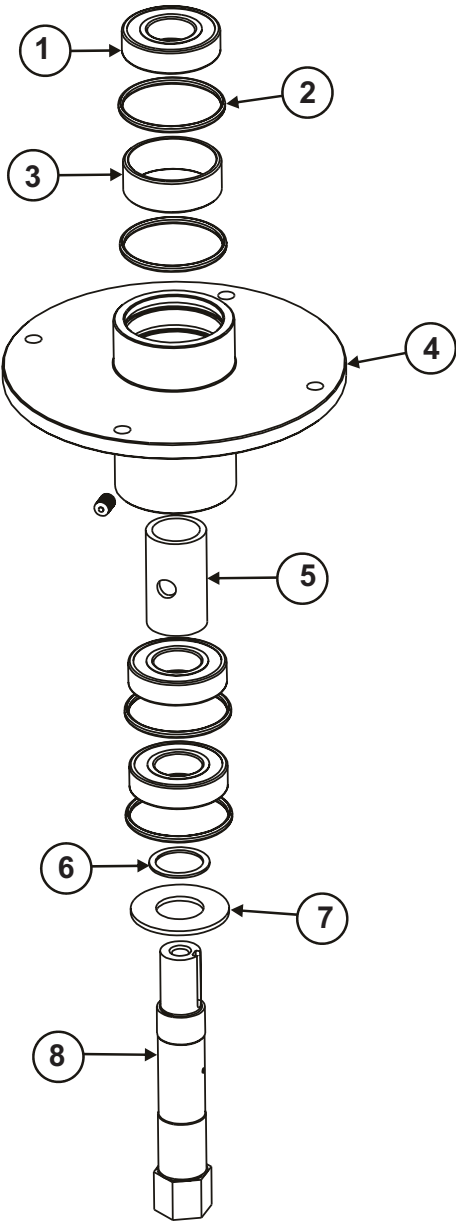
# FLEX DECK MOWER

## DOUBLE PULLEY SPINDLE

FIGURE 4

ITEM	PART NO.	DESCRIPTION	QTY
1	85010N	Fitting, 1/4-28 Straight Grease	1
2	4170740	Bolt, Spindle Single Pulley	1
3	4170930	Washer, 1/2" Plain Belleville	1
4	64164-03	Key, 1/4" Square x 1 1/2" Long	1
5	4170792	Sheave, Double - Mower Deck	1
6	64123-70	Bolt, 3/8-16 x 1 1/2" Hex Head Grade 5	4
7		Spindle Assembly, ZT Cast See pgs. 18-19 for Parts Breakdown	1
8	64268-03	Nut, 3/8-16 Flanged Hex Nyloc	4
9	4170730	Blade, 21" x 2 1/2" x 1/4" High Lift	1
	4175861	Blade, 21" Low-Lift	1
	4175862	Blade, 21" Gator Mulching	1
10	4170830	Washer, 2 1/2" x 11/16" x 3/16" Nylon	1
11	64123-211	Bolt, 5/8-18 x 1 3/4" Hex Head Grade 5	1
12	4170794	Blade Disc, Anti-Scalp	1

FIGURE 5



ITEM	PART NO.	DESCRIPTION	QTY
------	----------	-------------	-----

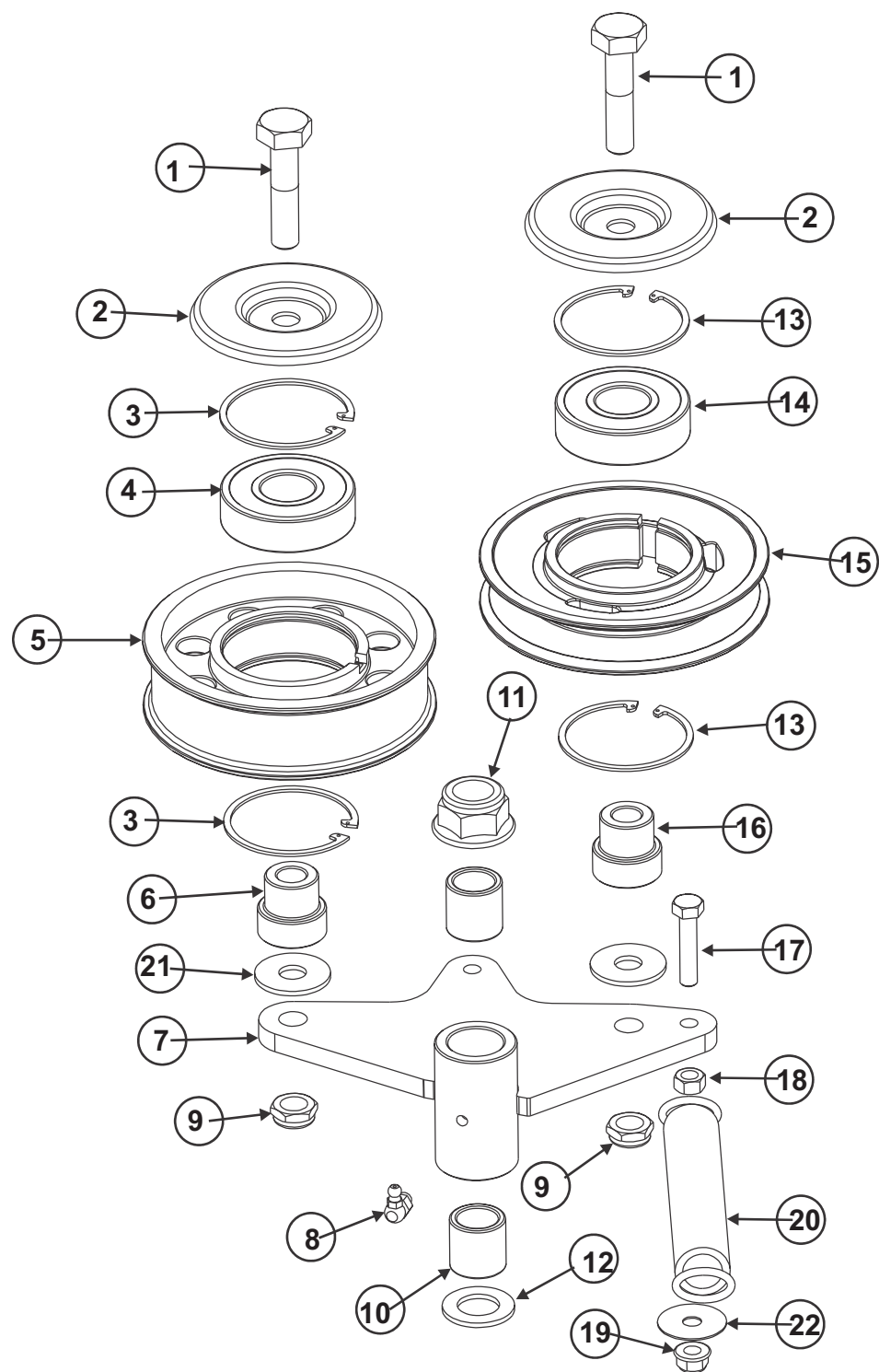
1	4170769	Bearing, 6206-2NSE	3
2	4170766	O-Ring, 2 1/2" ID x 2 3/4" OD	4
3	4170795	Spacer, Bearing Housing	1
4	4170749	Spindle Housing, ZT- Common Core	1
5	4170796	Spacer, Spindle Bearing Housing	1
6	4170927	Washer, 1.50" x 1.185" x 16Ga	1
7	4170926	Washer, 2.435" x 1.185" x 11Ga	1
8	4170748	Shaft, Blade Spindle ZT Cast	1

### Concerning Nachi Sealed Bearings:

One of the most common misconceptions that cause a high number of bearing failures is that a bearing needs to be completely packed full. Many people have been taught; the more grease, the better. **We have even heard of cases where people do not feel bearing manufacturers use enough grease in sealed and shielded ball bearings, so they remove one seal or shield and pack the bearing with more grease. These misconceptions are completely false.** Over lubricating the bearings forces the motor to work harder.

- **Nachi standard grease fill** for sealed and shielded ball bearings is **20% to 30% full** ■ Too much grease can cause excess friction, thereby overheating the bearing and causing remature failure.
- Only a small of grease is required to lubricate a bearing in motion.
- When a bearing is in motion, most of the grease is pushed to the side (channeling) leaving a thin film of oil between the raceways and rolling elements.
- When using open bearings, pack the bearing as follows:

FIGURE 6



# FLEX DECK MOWER

## DECK 1 IDLER ASSY

FIGURE 6

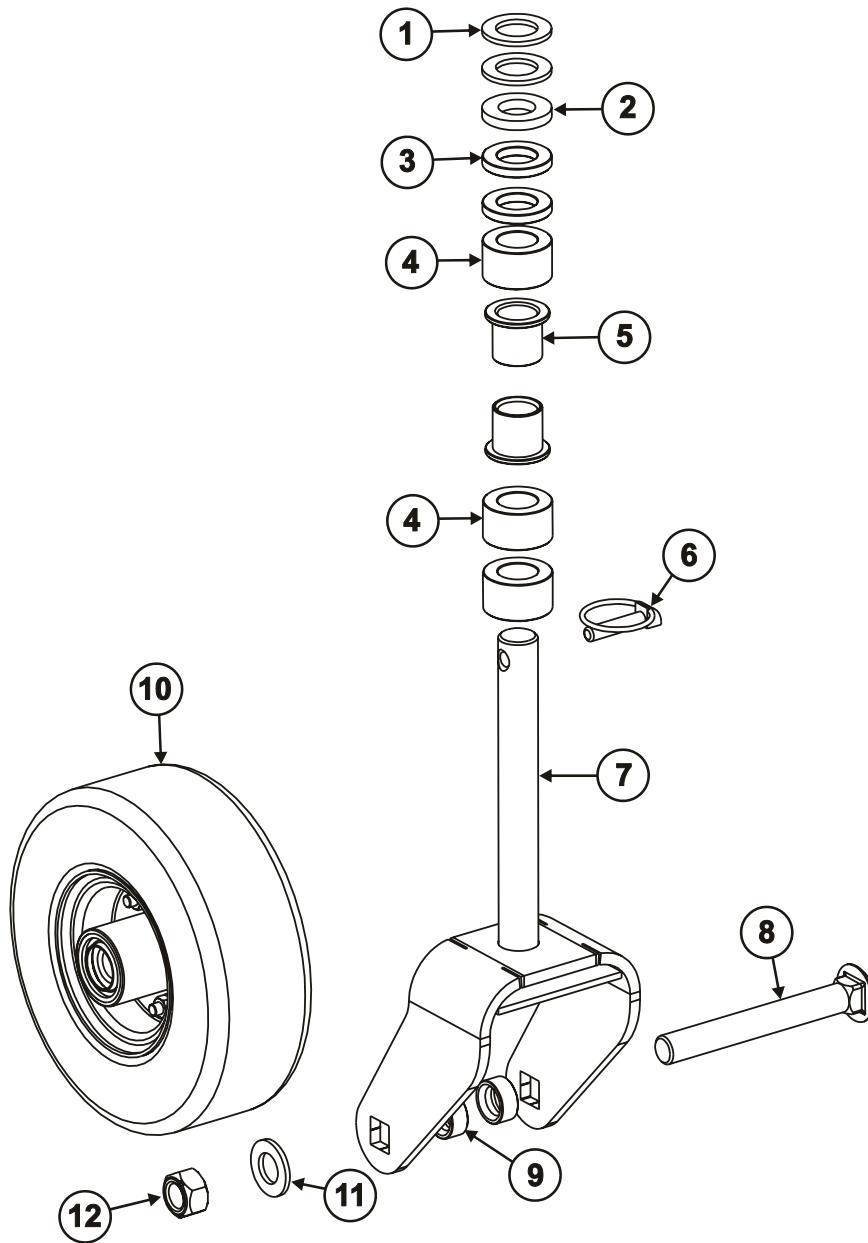
ITEM PART NO. DESCRIPTION QTY

1	64123-259	BOLT, 1/2-13 X 2 1/4" HEX HEAD GRADE 5	2
2	4170798	WASHER, WATER SHED PULLEY	2
3	64144-45	RING, 62MM IR DIN #472 RETAINING	2
4	4170765	BEARING, SPINDLE TOP 6305 RS	1
5	4170800	PULLEY, 5" OD IDLER, FLAT	1
6	4170801	BOSS, IDLER PULLEY STANDOFF	1
7	4170802	WELDMENT, 521E IDLER PLATE	1
8	35027N	FITTING, GREASE 90 DEG. 1/4-28	1
9	64151-37	NUT, 1/2-13 HALF NYLON LOCK	2
10	4170752	BUSHING, 3/4" ID X 1" OD X 1" OIL	2
11	64151-36	NUT, 3/4-10 HALF NYLOC	1
12	64163-06	WASHER, 3/4" AN YEL/CAD	1
13	64144-45	RING, 62MM IR DIN #472 RETAINING	2
14	4170765	BEARING, SPINDLE TOP 6305 RS	1
15	4170804	PULLEY, 5" OD IDLER, V GROOVE	1
16	4170801	BOSS, IDLER PULLEY STANDOFF	1
17	64123-319	BOLT, 5/16-18 X 1 1/2" HEX HEAD FULL THRD	1
18	64025-02	NUT, 5/16-18 HEX	1
19	64229-02	NUT, 5/16-18 FLANGED HEX NYLOCK	1
20	4170806	SPRING, 1" X 7" EXTENSION	1
21	4170929	WASHER, 1/2" STANDARD FLAT	2
22	64163-119	WASHER, 5/16X1 1/4 FENDER	1

# WHEEL YOKE ASSEMBLY

# FLEX DECK MOWER

FIGURE 7





# FLEX DECK MOWER

## WHEEL YOKE ASSEMBLY

FIGURE 7

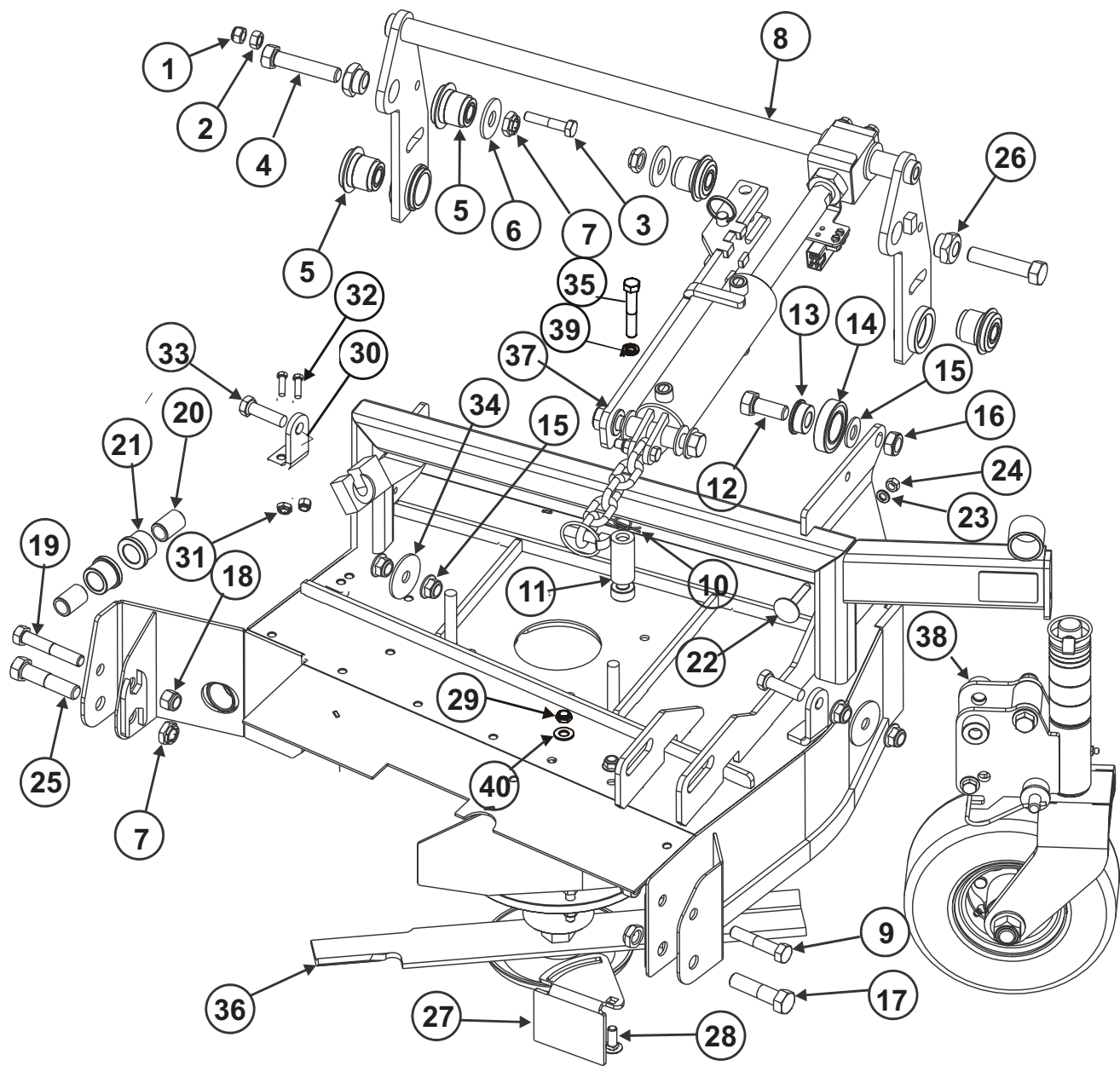
ITEM	PART NO.	DESCRIPTION	QTY
------	----------	-------------	-----

1	4175270-90	WASHER, 1-1/16" X 1-3/4" X 1/8" ZNC	2
2	4170759	SPRING, WHEEL YOKE 1-0 URETHANE	1
3	64163-07	SPACER, 1" ID X 1-3/4" OD X 1/4"	2
4	4170751	SPACER, 1 3/4" OD X 1 1/16" ID X 1"	3
5	4170768	BUSHING, 1" ID X 1-1/4" OD X 1-1/4" FLNGD	2
6	4170925	PIN, 3/8" DIA LYNCH LOCKING	1
7	4170808	YOKE WELDMENT, EFLW 9 IN	1
8	64018-52	BOLT, 3/4-10 X 6" CARRIAGE GRADE 5	1
9	4170753	SPACER, 3/4" AXLE BOLT	2
10	4170724	WHEEL ASSEMBLY, 9X3.5 RELIANCE DM	1
11	64163-110	WASHER, 3/4" SAE FLAT	1
12	4170924	NUT, 3/4-10 STOVER SWAGED	1

DECK 2 WLDMNT & HARDWARE

FLEX  
DECK  
MOWER

FIGURE 8



# FLEX DECK MOWER

## DECK 2 WLDMNT & HARDWARE

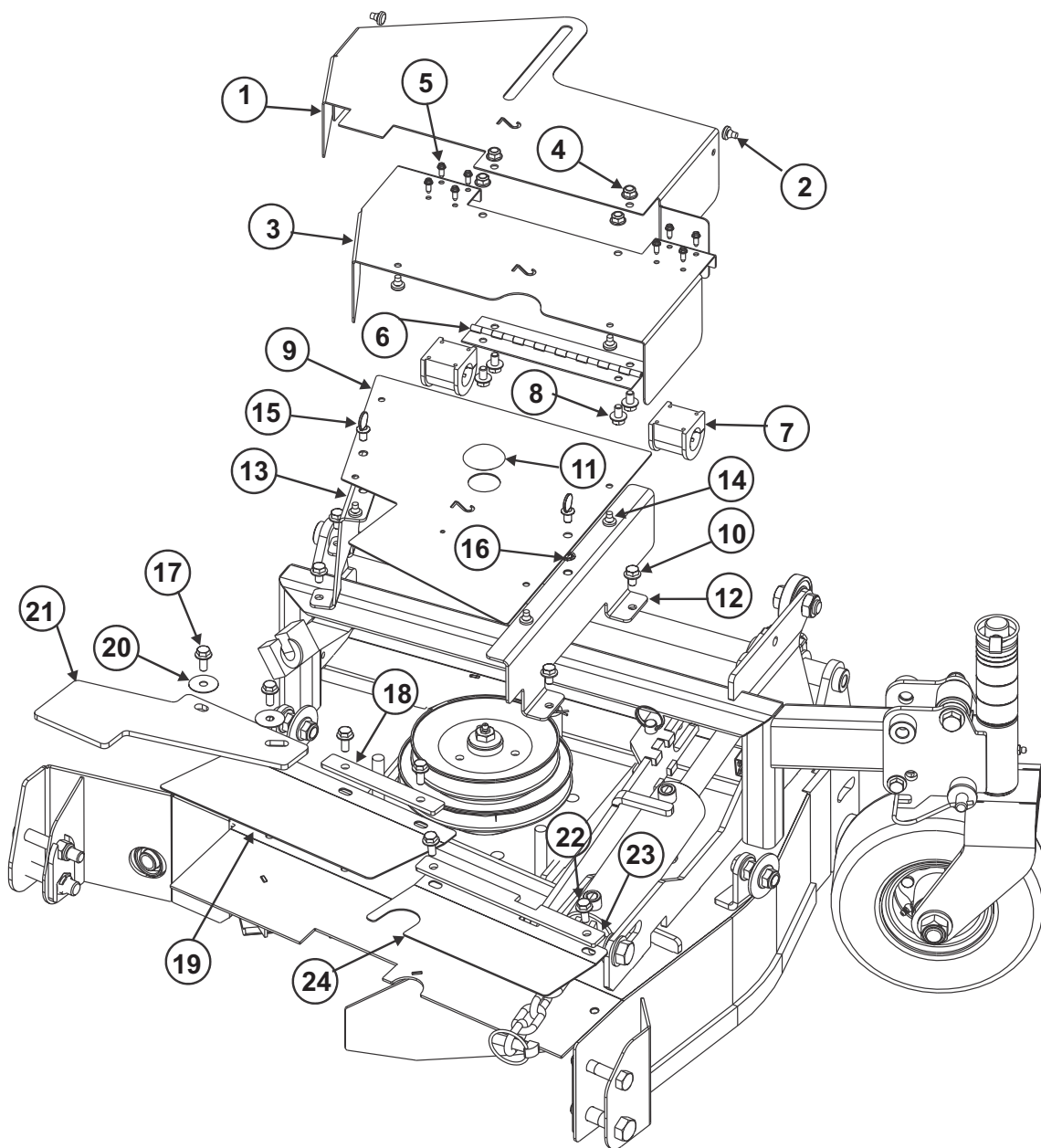
FIGURE 8

ITEM	PART NO.	DESCRIPTION	QTY
1	64237-10	NUT, 10MM X 1.25 NYLON	1
2	64207-10	NUT, M10-1.25 FREE ZINC PLATE	1
3	64206-18	SCREW, M10-1.25 X 45 HX CAP	1
4	64123-325	BOLT, 5/8-11 X 3 HEX HEAD GRADE 5	2
5	4170755	BUSHING, URETHANE PIVOT	4
6	64163-76	WASHER, 5/8" STANDARD FLAT	2
7	64236-04	NUT, 5/8-11 FLEXLOC	4
8	4170809	HINGE WELDMENT, #2 DECK	1
9	64213-72	BOLT, 1/2-13 X 2 1/2" HEX HEAD GRADE 5	1
10	4175270-13	PIN, 5/8 IN CLEVIS RETAINING	1
11	4172070-14	TUBE, BELT KEEPER , SHORT	1
12	64123-326	BOLT, 5/8-11 X 1 1/2" HEX HEAD FULL THREAD	2
13	4170811	SPACER, BEARING	1
14	4170812	BEARING, 1.25" X 2.25" X .50"	1
15	64163-119	WASHER, 5/8" SAE FLAT	1
16	64151-42	NUT, 5/8-11 JAM NYL LOCK	1
17	64123-168	BOLT, 5/8-11 X 2 1/2" HEX HEAD GRADE 5	1
18	64229-05	NUT, 1/2-13 NYL HEX LOCK	2
19	64123-31	BOLT, 1/2-13 X 3 HEX HEAD GRADE 5	2
20	4170760	SLEEVE, .875X1.39 LONG BUSHING	2
21	4170758	BUSHING, .875" BEARING	2
22	4170919	BOLT, 5/16-18 X 2" ELEVATOR	1
23	64006-02	WASHER, 5/16" SPLIT LOCK	1
24	64025-02	NUT, 5/16-18 HEX	1
25	64123-322	Bolt, 5/8-11 x 2 3/4 Hex Head Grade 5	1
26	4175270-15	Nut, 100EF Hinge Cam Adjust	2
27	4170767	DEFLECTOR PLATE, #5 DECK GRASS	1
28	64018-53	BOLT, 3/8-16 X 3/4" CARRIAGE	2
29	64268-03	Bolt, 3/8-16x1 Carriage	2
30	4175270-81	Nut, 3/8-16 Flanged Hex Nylock	1
31	64229-02	Baffle Assembly, #2 Blowout	2
32	64018-15	Nut, 5/16-18 Flanged Hex Nylock	2
33	64123-316	Bolt, 1/2-13x1 3/4 HH Gr5 FT	2
34	4175270-16	Washer, Motor Mount	2
35	64229-05	Nut, 1/2-13 Flanged Hex Nylock	4
36		Spindle Assembly, See pgs. 28-29 for Parts Breakdown	1
37	4170899	Cylinder Assembly, #2 Deck Lift	1
38	4170894	Yoke Assembly, Pivoting Wheel	1

## DECK 2 COVERS

## FLEX DECK MOWER

FIGURE 9



# FLEX DECK MOWER

## DECK 2 COVERS

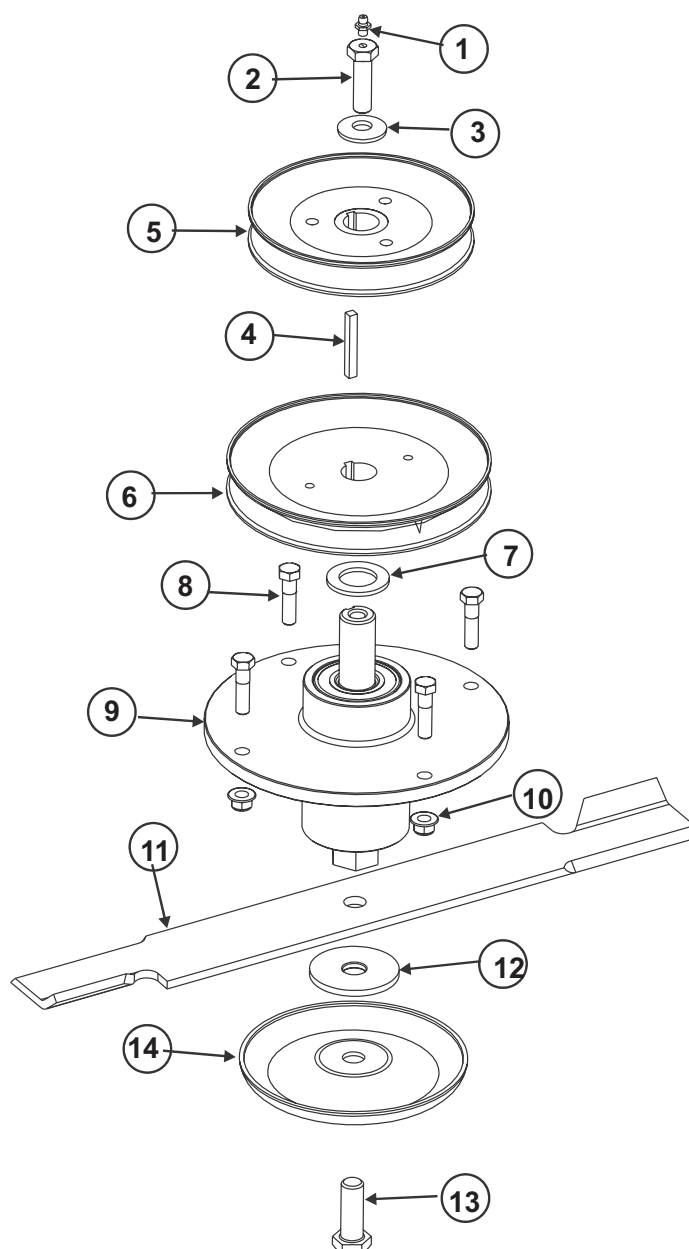
FIGURE 9

ITEM	PART NO.	DESCRIPTION	QTY
1	4170817	COVER, #1 DECK SLIDING	1
2	4170734	BUMPER, RUBBER BUTTON	4
3	4170818	COVER, #2 DECK RIGHT SLIDING	1
4	64229-02	NUT-NYLON LOCK 5/16-18	4
5	64197-008	SCREW, #10 X 1/2" LONG AB SLOT HEX	8
6	4170819	HINGE, 521E SLIDING COVER	1
7	4170743	PIVOT BEARING, COVER	2
8	64123-92	BOLT, 5/16-18 X 1/2" HEX HEAD GRADE 5	4
9	4175270-18	COVER PLATE, #2	1
10	64123-92	BOLT, 5/16-18 X 1/2" HEX HEAD GRADE 5	4
11	4170772	Cover, 1 3/8" HOLE PLUG	1
12	4170822	GUARD WELDMENT, #2 FRONT	1
13	4175270-19	GUARD WELDMENT, #2 REAR	1
14	4170734	BUMPER, RUBBER BUTTON	4
15	4175270-63	SCREW, 5/16-18 X 1/2 SERRATED	2
16	4175270-64	NUT, 5/16 PUSH	2
17	64123-54	BOLT, 5/16-18 X 3/4" HEX HEAD GRADE 5	4
18	4170825	CLAMP PLATE, #2 DECK TRAP DOOR	1
19	4170744	DOOR, #2 DECK TRAP	1
20	64163-212	WASHER, 5/16 X 1 1/4 FENDER	2
21	4170747	DOOR, #2/4 DECK TRAP	1
22	64123-54	BOLT, 5/16-18 X 3/4" HEX HEAD GRADE 5	4
23	4170827	CLAMP PLATE, #2 DECK TRAP DOOR	1
24	4170746	DOOR, #2 DECK TRAP	1

## DOUBLE PULLEY SPINDLE

FIGURE 10

**FLEX  
DECK  
MOWER**



# FLEX DECK MOWER

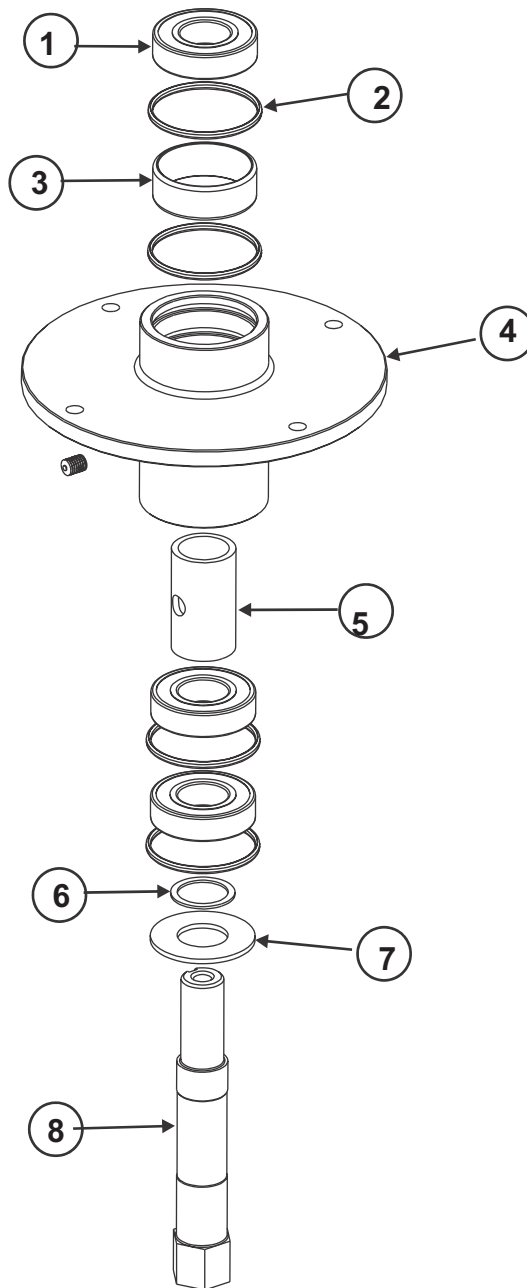
## DOUBLE PULLEY SPINDLE

FIGURE 10

ITEM	PART NO.	DESCRIPTION	QTY
1	85010N	Fitting, 1/4-28 Straight Grease	1
2	4170741	Bolt, Spindle Single Pulley	1
3	4170930	Washer, 1/2" Plain Belleville	1
4	4175270-20	Key, 1/4" Square x 2" Long	1
5	4175270-21	Sheave, Single D6.3 short Hub	1
6	4175270-22	Sheave, deep Groove 6.5 pd	1
7	4175270-90	Washer 1/1/19 x 1 3/4 x 1/8t	1
8	64123-70	Bolt, 3/8-16 x 1 1/2" Hex Head Grade 5	4
9		Spindle assembly 7.83 See pgs. 30-31 for Parts Breakdown	1
10	64268-03	Nut, 3/8-16 Flanged Hex Nyloc	4
11	4170730	Blade, 21" x 2 1/2" x 1/4" High Lift	1
	4175861	Blade, 21" Low-Lift	1
	4175862	Blade, 21" Gator Mulching	1
12	4170830	Washer, 2 1/2" x 11/16" x 3/16" Nylon	1
13	64123-211	Bolt, 5/8-18 x 1 3/4" Hex Head Grade 5	1
14	4170794	Blade Disc, Anti-Scalp	1



FIGURE 11



ITEM	PART NO.	DESCRIPTION	QTY
------	----------	-------------	-----

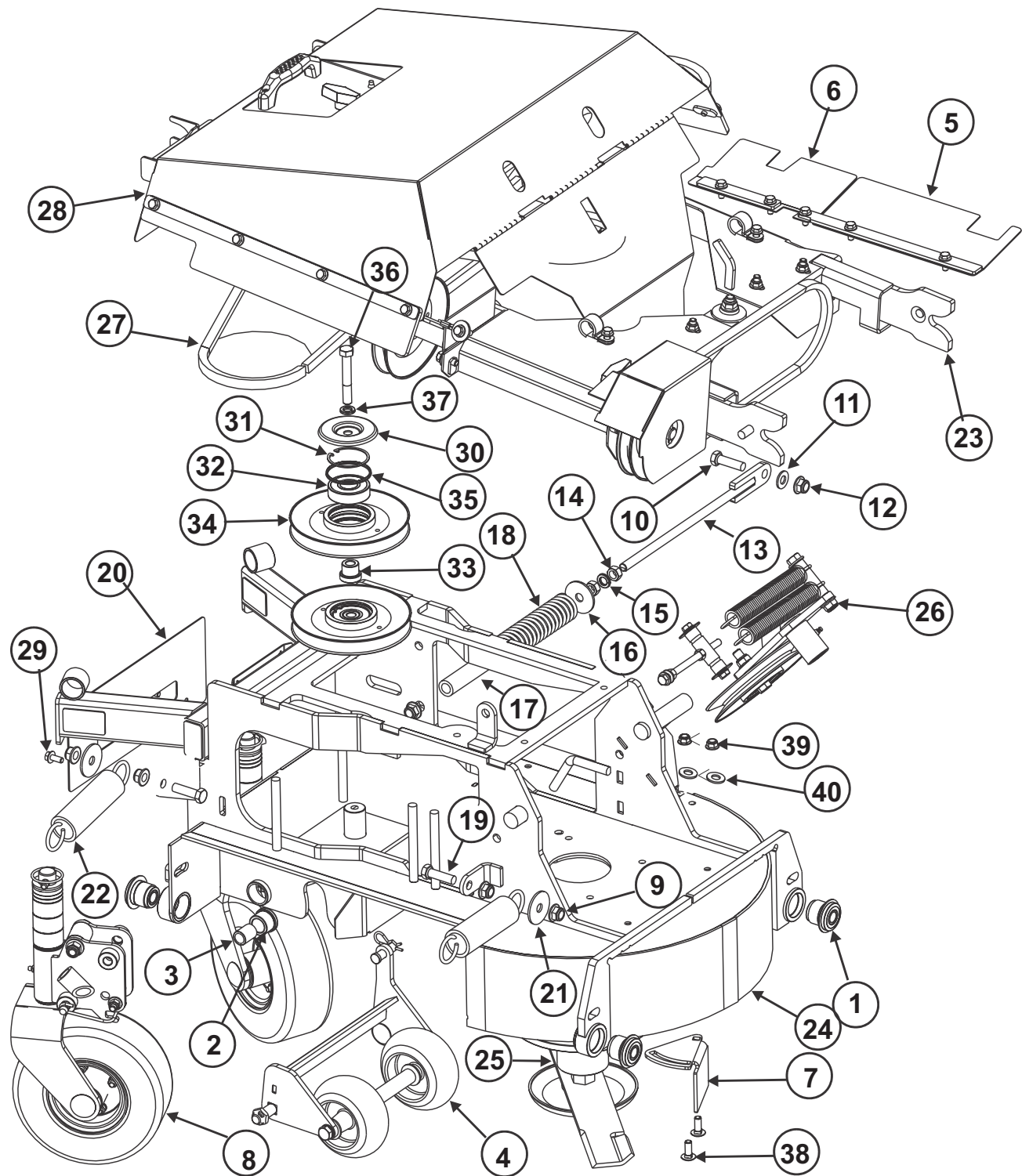
1	4170769	Bearing, 6206-2NSE	3
2	4170766	O-Ring, 2 1/2" ID x 2 3/4" OD	4
3	4170795	Spacer, Bearing Housing	1
4	4170749	Spindle Housing, ZT- Common Core	1
5	4170796	Spacer, Spindle Bearing Housing	1
6	4170927	Washer, 1.50" x 1.185" x 16Ga	1
7	4170926	Washer, 2.435" x 1.185" x 11Ga	1
8	4175270-24	Shaft, Center Spindle ZT Cast	1

### Concerning Nachi Sealed Bearings:

One of the most common misconceptions that cause a high number of bearing failures is that a bearing needs to be completely packed full. Many people have been taught; the more grease, the better. **We have even heard of cases where people do not feel bearing manufacturers use enough grease in sealed and shielded ball bearings, so they remove one seal or shield and pack the bearing with more grease. These misconceptions are completely false.** Over lubricating the bearings forces the motor to work harder.

- **Nachi standard grease fill** for sealed and shielded ball bearings is **20% to 30% full** ■ Too much grease can cause excess friction, thereby overheating the bearing and causing remature failure.
- Only a small of grease is required to lubricate a bearing in motion.
- When a bearing is in motion, most of the grease is pushed to the side (channeling) leaving a thin film of oil between the raceways and rolling elements.
- When using open bearings, pack the bearing as follows:

FIGURE 12



# FLEX DECK MOWER

## DECK 3 WELDMENT & HARDWARE

FIGURE 12

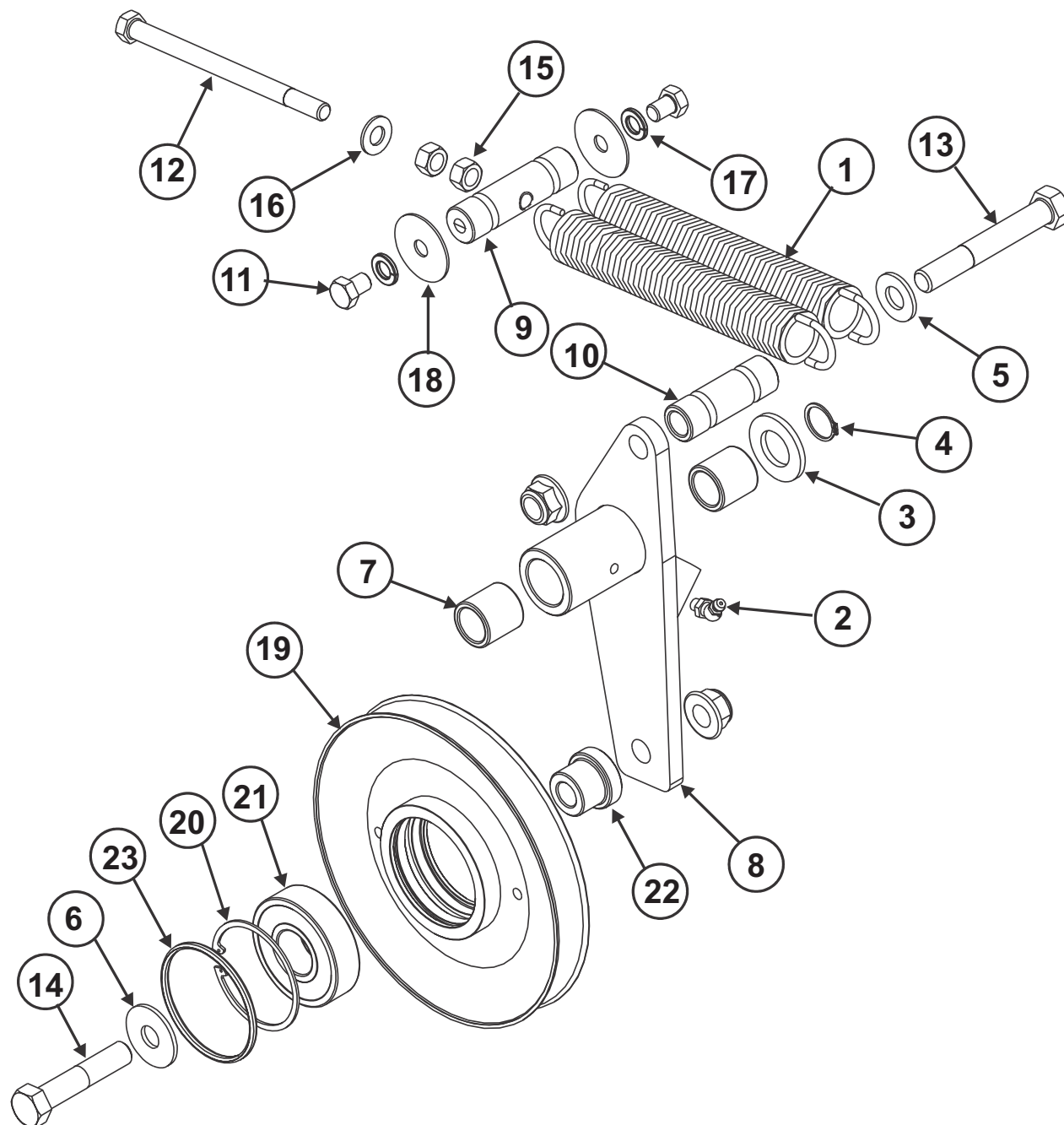
ITEM PART NO. DESCRIPTION QTY

1	4170755	Bushing, Urethane Pivot	4
2	4170758	Bushing, .875 Bearing	2
3	4170843	Sleeve, .875x1.14 Lg Bushing	2
4	4170872	Roller Assembly, 521E/Z Anti-scalp	1
5	4170866	Door Assembly, #3 Deck Trap	1
6	4170868	Door Assembly, #3 Deck Trap	1
7	4170767	Deflector, Grass	1
8	4170894	Yoke Assembly, Pivoting Wheel	2
9	64229-05	Nut, 1/2-13 Flanged Hex Nylock	4
10	64123-316	Bolt, 1/2-13 x 1 3/4" Hex Head Gr 5 Full Thread	1
11	64163-118	Washer, 1/2" SAE Flat	1
12	64229-05	Nut, 1/2-13 Flanged Hex Nylock	2
13	4170834	Tensioner Weldment, Deck	1
14	64025-09	Nut, 1/2-13 Hex	2
15	4170930	Washer, 1/2" Split Lock	1
16	4175270-16	Washer, Motor Mount	1
17	4170836	Spacer, Neoprene Spring	1
18	4170837	Spring, Comp. 1-1/2 OD x 6-3/4 x 3/16 Wire	1
19	64123-316	Bolt, 1/2-13 x 1 3/4" Hex Head Gr 5 Full Thread	2
20	4175270-25	Front Guard, #3 Deck	1
21	4175270-16	Washer, Motor Mount	2
22	4175270-26	Spring, Counter Balance	2
23		Arm Assembly, Push See pgs. 40-41 for Parts Breakdown	1
24	4175270-06	Deck Weldment, #3	1
25		Spindle Assembly, EFS #3 See pgs. 42-43 for Parts Breakdown	1
26		Tensioner Assembly, 7.38" See pgs. 34-35 for Parts Breakdown	1
27	4175125	Belt, 80EFS2 Main Deck	1
28		Cover Assembly, Center See pgs. 36-37 for Parts Breakdown	1
29	64123-54	Bolt, 5/16-18x3/4 GR5 FHCS Serrated	2
30	4170798	Washer, Water Shed Pulley	1
31	64144-45	Ring, 62mm IR Din #472 Retaining	2
32	4170765	Bearing, Spindle Top 6305 RS	1
33	4170805	Boss, Idler Pulley Standoff	1
34	4175270-31	Sheave Weldment, 7.38" OD	1
35	4170766	O-Ring, 2-1/2 ID x 2 3/4 OD	1
36	64123-95	Bolt, 1/2-13x3 1/4 HH Gr5	1
37	4170930	Washer, 1/2 Split Lock	1
38	64018-53	Bolt, 3/8-16x3/4 Carriage	2
39	64263-03	Nut, 3/8-16 half nylon lock	2
40	64163-61	Washer, 3/8 SAE flat	2

## DECK 3 TENSIONER ASSEMBLY

**FLEX  
DECK  
MOWER**

FIGURE 13



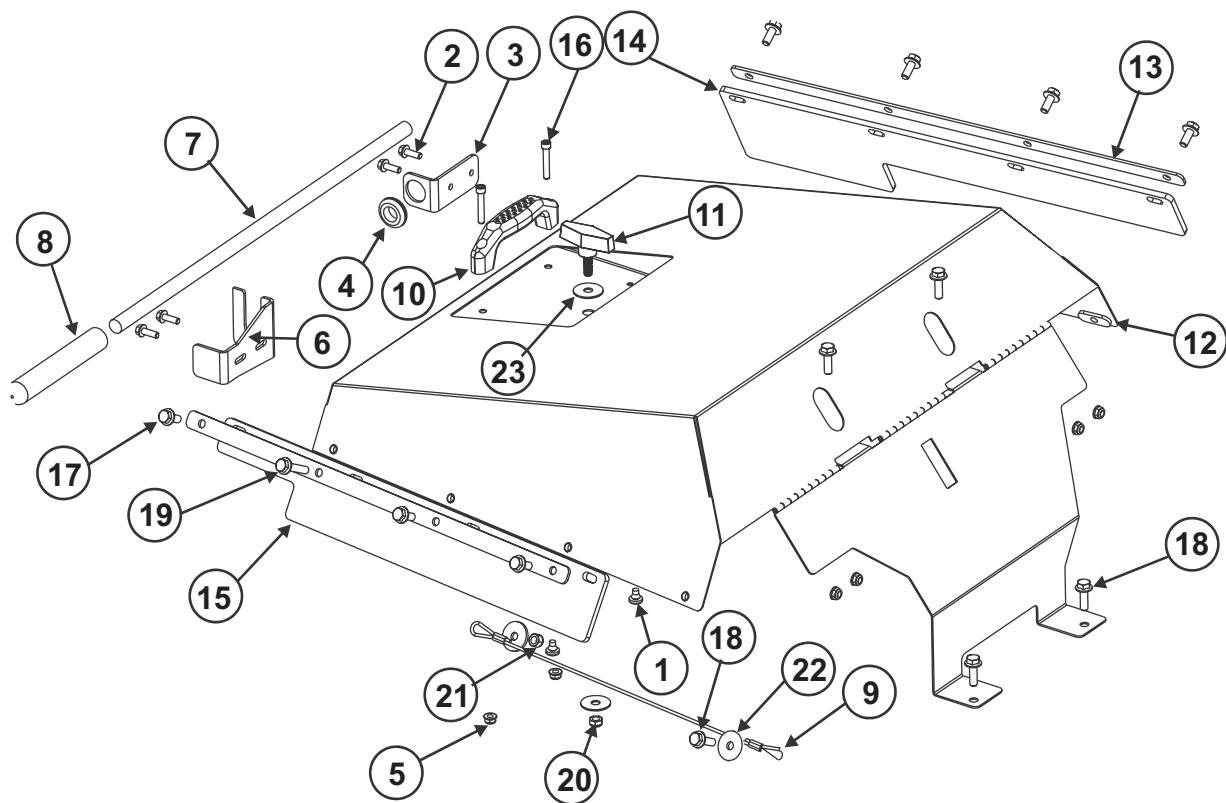
# FLEX DECK MOWER

## DECK 3 TENSIONER ASSEMBLY

FIGURE 13

ITEM	PART NO.	DESCRIPTION	QTY
------	----------	-------------	-----

1	4175270-32	Spring, 1X8 3/8 Leg 325E-98	1
2	38388	Fitting, 1/4-28 45 Deg Grease	1
3	64163-06	Washer, 3/4 AN Yel/Cad	1
4	64144-02	Ring, 3/4" External - External	2
5	64163-118	Washer, 1/2" SAE Flat	1
6	4170929	Washer, 1/2" Standard Flat	1
7	4170752	Bushing, 3/4 ID x 1 OD x 1 Oil	1
8	4175270-33	Tensioner Wldmt. Belt	2
9	4175270-34	Pivot Boss, Dual Spring	1
10	4175270-35	Boss, Dual Spring	1
11	64123-08	Bolt, 3/8-16x1/2 HH Gr5	2
12	4175270-66	Bolt, 3/8-16x5 1/2 FT HH Tap	1
13	64123-293	Bolt, 1/2-13x3 1/2 HH Gr5	1
14	64123-72	Bolt, 1/2-13x2 1/2 HH Gr5	1
15	64025-05	Nut, 3/8-16 Hex	2
16	64163-61	Washer, 3/8 Flat SAE	1
17	4175270-67	Washer, 3/8 Split Lock	2
18	4175270-68	Washer, 3/8 Fender	2
19	4175270-31	Sheave Weldment, 7.38" OD	1
20	64144-45	Ring, 62mm IR Din #472 Retaining	2
21	4170765	Bearing, Spindle Top 6305 RS	1
22	4170805	Boss, Idler Pulley Standoff	1
23	4170766	O-Ring, 2-1/2 ID x 2 3/4 OD	1



# FLEX DECK MOWER

## DECK 3 COVERS

FIGURE 14

ITEM	PART NO.	DESCRIPTION	QTY
------	----------	-------------	-----

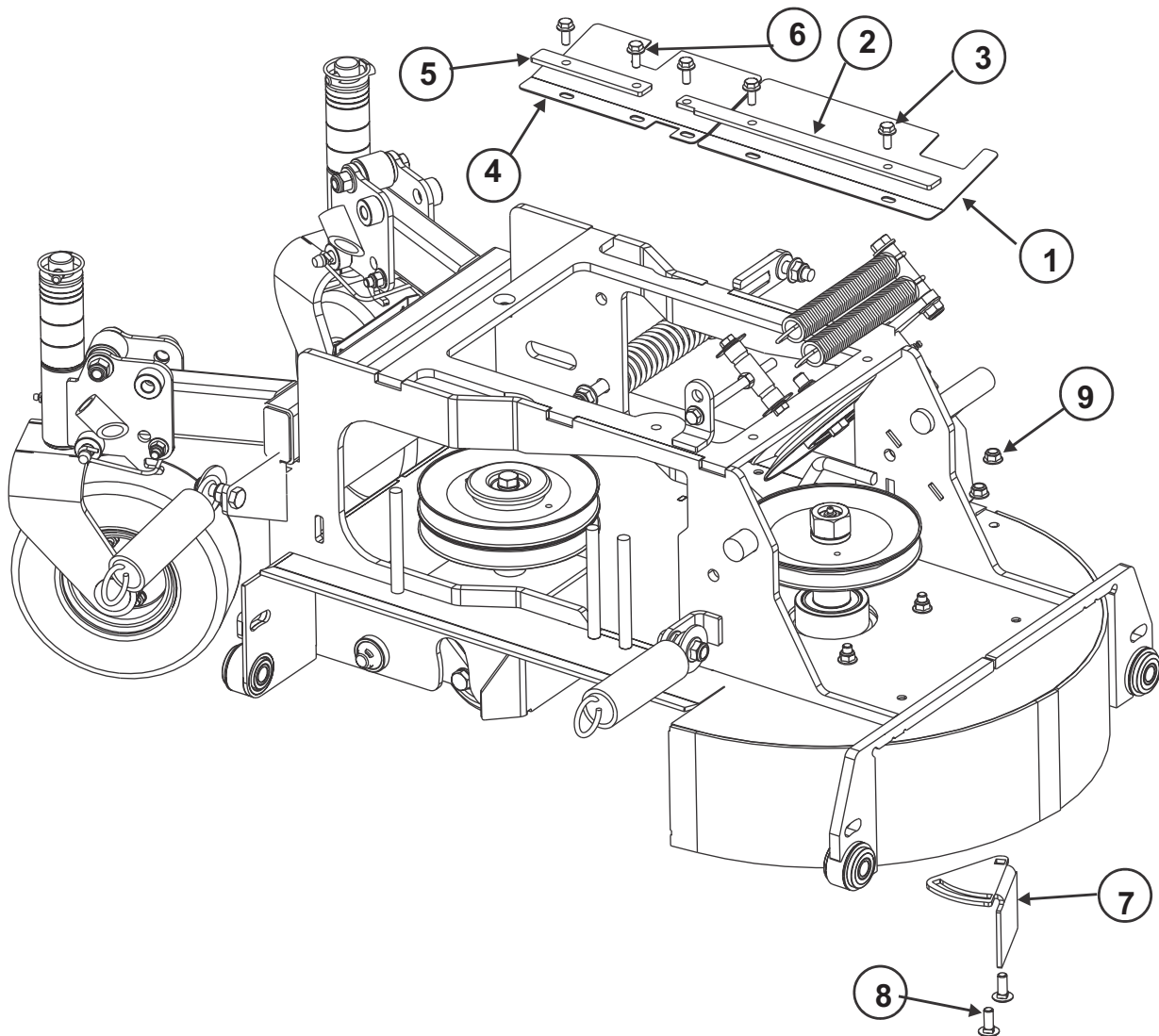
1	4170734	Bumper, Rubber Button	1
2	64123-89	Bolt, 1/4-20x3/4 GR5 FHCS Serrated	4
3	4170861	Bracket, Deck Bar Holder	1
4	4170862	Grommet, 11/16 x 1 x 1 5/16 Rubber	1
5	64268-01	Nut, 1/4-20 Flanged Hex Nylock	6
6	4175270-36	Clip, Vertical Handle Deck	1
7	4170864	Handle, Deck Lift Rod	1
8	4170865	Handle, Foam .625x6x3/16 Wall	1
9	4175270-37	Cable, Seat Lanyard	1
10	4175270-38	Handle, Hood ZT	1
11	4175270-39	Knob, 5/16-18 x 1 Two Arm	1
12	4175270-40	Cover Weldment, Center	1
13	4175270-41	Guard Plate, Rubber	2
14	4175270-42	Guard, Right Rubber	1
15	4175270-43	Guard, Left Rubber	1
16	4175270-69	Screw, 1/4-20x1 1/2 SHCS 18-8 SS	2
17	64123-54	Bolt, 5/16-18x3/4 GR5 FHCS Serrated	7
18	4175270-93	Bolt, 5/16-18x1 GR5 FHCS Serrated	5
19	64123-319	Bolt, 5/16-18x1-1/2 GR5 FHCS Serrated	1
20	64151-41	Nut, 5/16-18 Nylon Locking Jam	1
21	64229-02	Nut, 5/16-18 Nylok Hex	1
22	4175270-70	Washer, 5/16 ID x 1/8 Fender	2
23	4170773	Washer, Throttle Friction	2



## DECK 3 TRAP DOORS

## FLEX DECK MOWER

FIGURE 15



# FLEX DECK MOWER

## DECK 3 TRAP DOORS

FIGURE 15

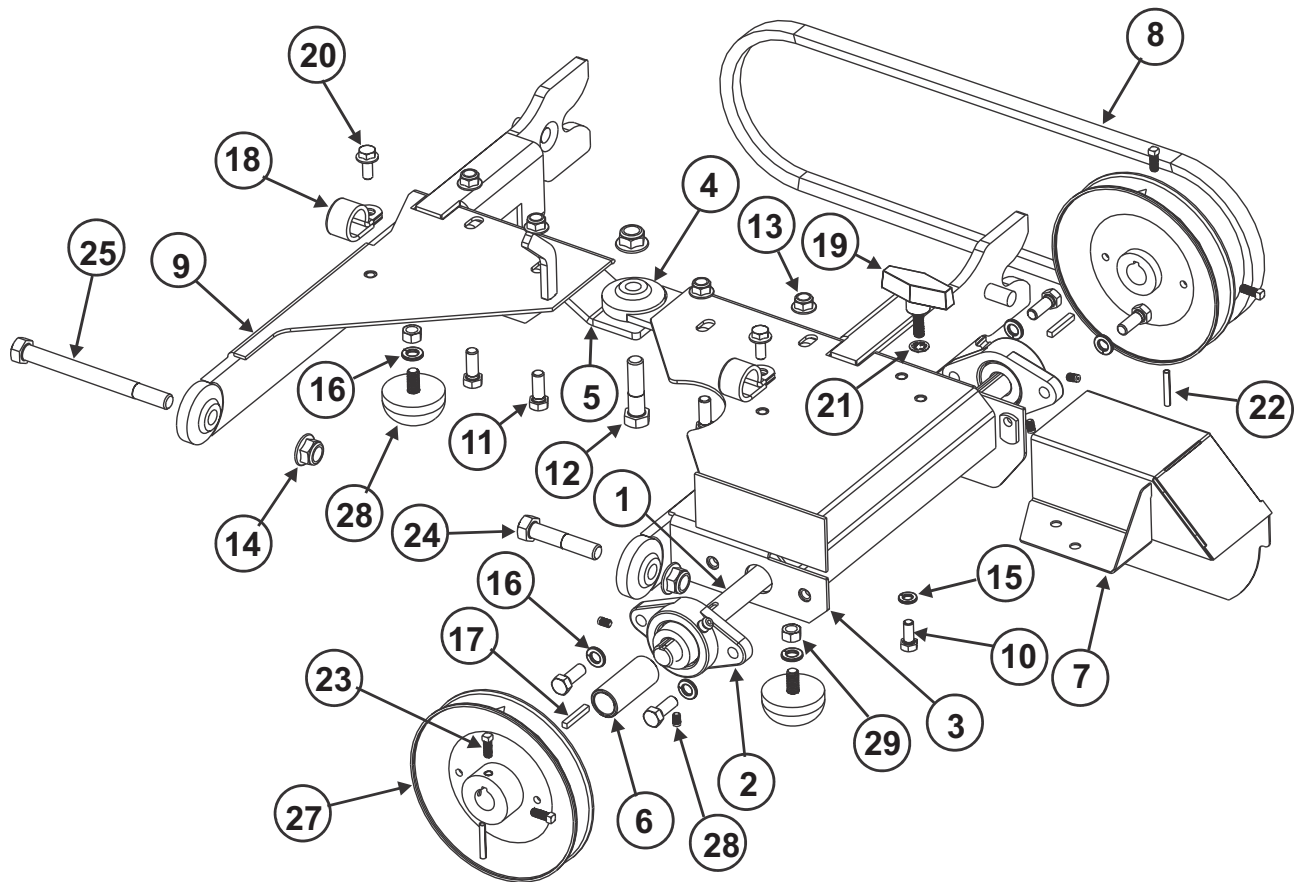
ITEM	PART NO.	DESCRIPTION	QTY
------	----------	-------------	-----

1	4170745	Door, 521E/Z #3 Deck Trap	1
2	4170867	Clamp Plate, #3 Deck Trap Door	1
3	64123-54	Bolt, 5/16-18x3/4 Grade 5 FHCS Serrated	3
4	4170869	Door, 521E/Z #3 Deck Trap	1
5	4170870	Clamp Plate, #3 Deck Trap Door	1
6	64123-54	Bolt, 5/16-18x3/4 Grade 5 FHCS Serrated	2
7	4170767	Deflector Plate, #5 Deck Grass	1
8	64018-53	Bolt, 3/8-16x3/4 Carriage	2
9	64268-03	Nut, 3/8-16 Flanged Hex Nylock	2

# PUSH ARM ASSEMBLY

FIGURE 16

# FLEX DECK MOWER



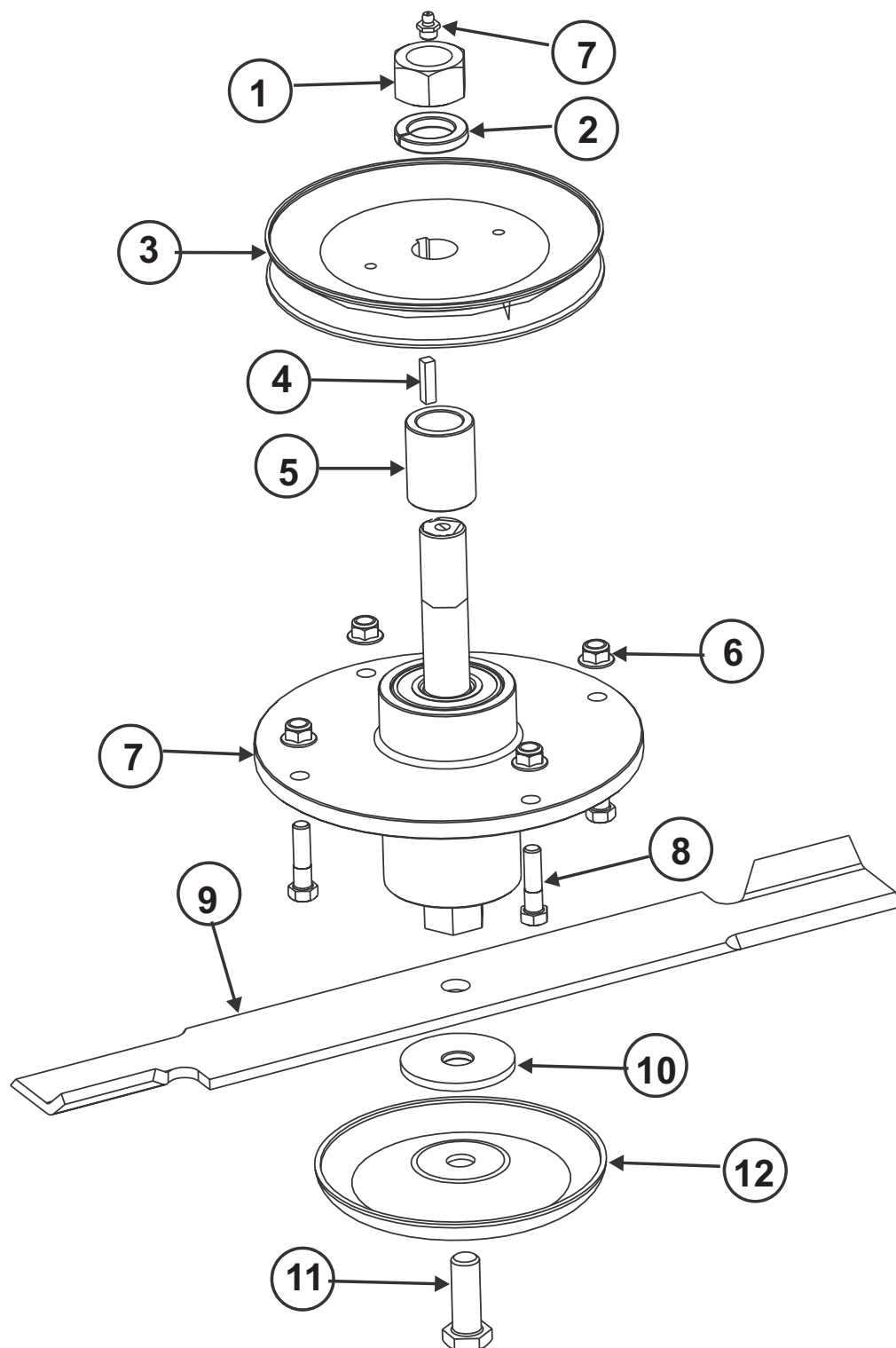
# FLEX DECK MOWER

## PUSH ARM ASSEMBLY

FIGURE 16

ITEM	PART NO.	DESCRIPTION	QTY
1	4175270-08	Shaft, Drive, Push Arm	1
2	4175270-09	Bearing, 3/4 Flange	2
3	4175270-52	Frame Weldment, Push, Left	1
4	4175270-44	Arm Weldment, Left Center	1
5	4175270-92	Frame Plate, Push Arm, Right Center	1
6	4175270-46	Spacer, 2.375 L x 1.00 OD x .77 ID	1
7	4175270-47	Guard, Pulley	1
8	4174756	Belt, Drive, BX 43	1
9	4175270-48	Frame Weldment, Push, Right	1
10	64123-54	Bolt, 5/16-18x3/4 HH Gr5	1
11	64123-50	Bolt, 3/8-16x1 HH Gr5	8
12	64123-24	Bolt, 1/2-13x2 HH Gr5	1
13	64268-03	Nut, 3/8-16 Flanged Hex Nylock	4
14	64229-05	Nut, 1/2-13 Flanged Hex Nylock	3
15	64006-02	Washer, 5/16 Split Lock	1
16	4175270-67	Washer, 3/8 Split Lock	6
17	4175270-49	Key, 3/16 Square x 1 1/4 Steel	2
18	4170857	Clamp, 1in ID Coated	2
19	4175270-39	Knob, 5/16-18 x 1 Two Arm	1
20	64123-54	Bolt, 5/16-18x3/4 GR5 FHCS Serrated	2
21	4175270-64	Nut, 5/16 Push	1
22	4175270-71	Pin, 3/16x1 1/4 Roll	2
23	4175270-72	Screw, 1/4-20x5/8 Sq Hd Cup Pt Set	4
24	4175270-73	Bolt, 1/2-13 x 2-1/2 HH G8	1
25	4175270-74	Bolt, 1/2-13 x 5-1/2 HH G8	1
26	4175270-50	Bump Stop	2
27	4175270-51	Sheave, Deep Groove, 5.57 PD	2
28	4175270-75	Screw, M6-1x8 SHSS	4
29	64025-05	Nut, 3/8-16 Hex	2

**FIGURE 17**



# FLEX DECK MOWER

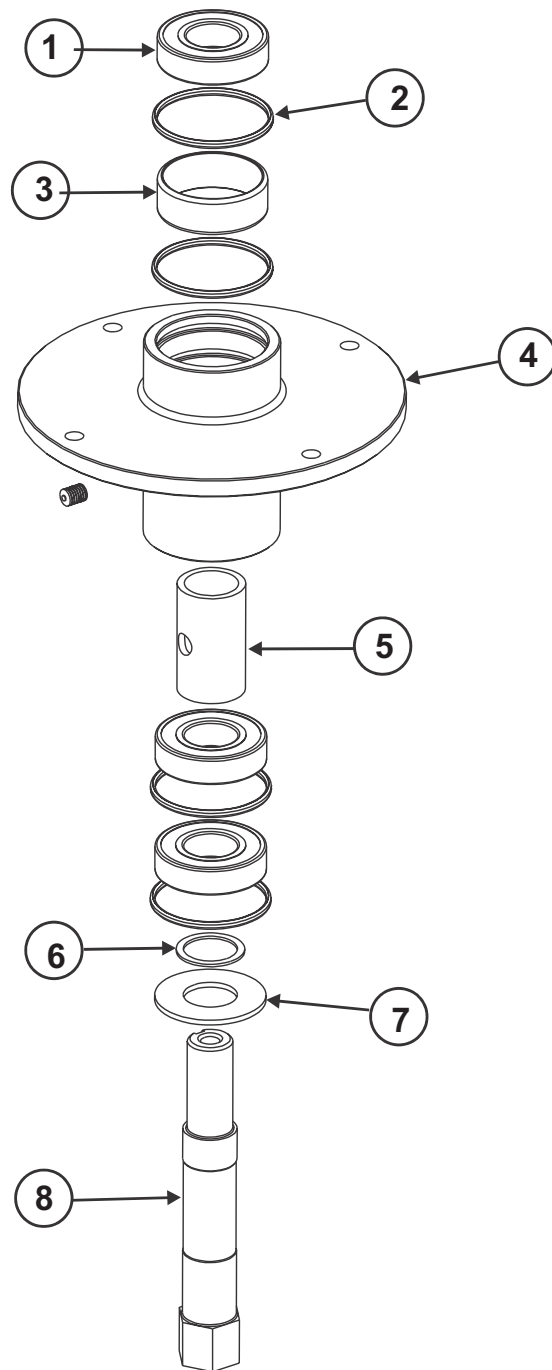
## PULLEY SPINDLE DECK #3

FIGURE 17

ITEM	PART NO.	DESCRIPTION	QTY
1	4175270-77	Nut, 1-12 Free	1
2	4175270-76	Washer, 1in Split Lock	1
3	4175270-22	Sheave, Deep Groove 6.50 PD	1
4	4175270-53	Key, 1/4inX 1in	1
5	4175270-54	Spacer, 1.36 L x 1.50 OD x 1.01 ID	1
6	64268-03	Nut, 3/8-16 Flanged Hex Nyloc	4
7		Spindle Assembly, Center ZT Cast See pgs. 44-45 for Parts Breakdown	1
8	64123-70	Bolt, 3/8-16 x 1 1/2" Hex Head Grade 5	4
9	4170730	Blade, 21" x 2 1/2" x 1/4" High Lift	1
	4175861	Blade, 21" Low-Lift	1
	4175862	Blade, 21" Gator Mulching	1
10	4170830	Washer, 2 1/2" x 11/16" x 3/16" Nylon	1
11	64123-211	Bolt, 5/8-18 x 1 3/4" Hex Head Grade 5	1
12	4170794	Blade Disc, Anti-Scalp	1
13	85010N	Fitting, 1/4-28 Straight Grease	1

\*ORDER SEPERATELY FROM LASTEC

FIGURE 18



ITEM	PART NO.	DESCRIPTION	QTY
------	----------	-------------	-----

1	4170769	Bearing, 6206-2NSE	3
2	4170766	O-Ring, 2 1/2" ID x 2 3/4" OD	4
3	4170795	Spacer, Bearing Housing	1
4	4170749	Spindle Housing, ZT- Common Core	1
5	4170796	Spacer, Spindle Bearing Housing	1
6	4170927	Washer, 1.50" x 1.185" x 16Ga	1
7	4170926	Washer, 2.435" x 1.185" x 11Ga	1
8	4175270-56	Shaft, Spindle Center Cast	1
9	4175270-57	Fitting, Zerk 3/8-24 Grease	1

### Concerning Nachi Sealed Bearings:

One of the most common misconceptions that cause a high number of bearing failures is that a bearing needs to be completely packed full. Many people have been taught; the more grease, the better. **We have even heard of cases where people do not feel bearing manufacturers use enough grease in sealed and shielded ball bearings, so they remove one seal or shield and pack the bearing with more grease. These misconceptions are completely false.** Over lubricating the bearings forces the motor to work harder.

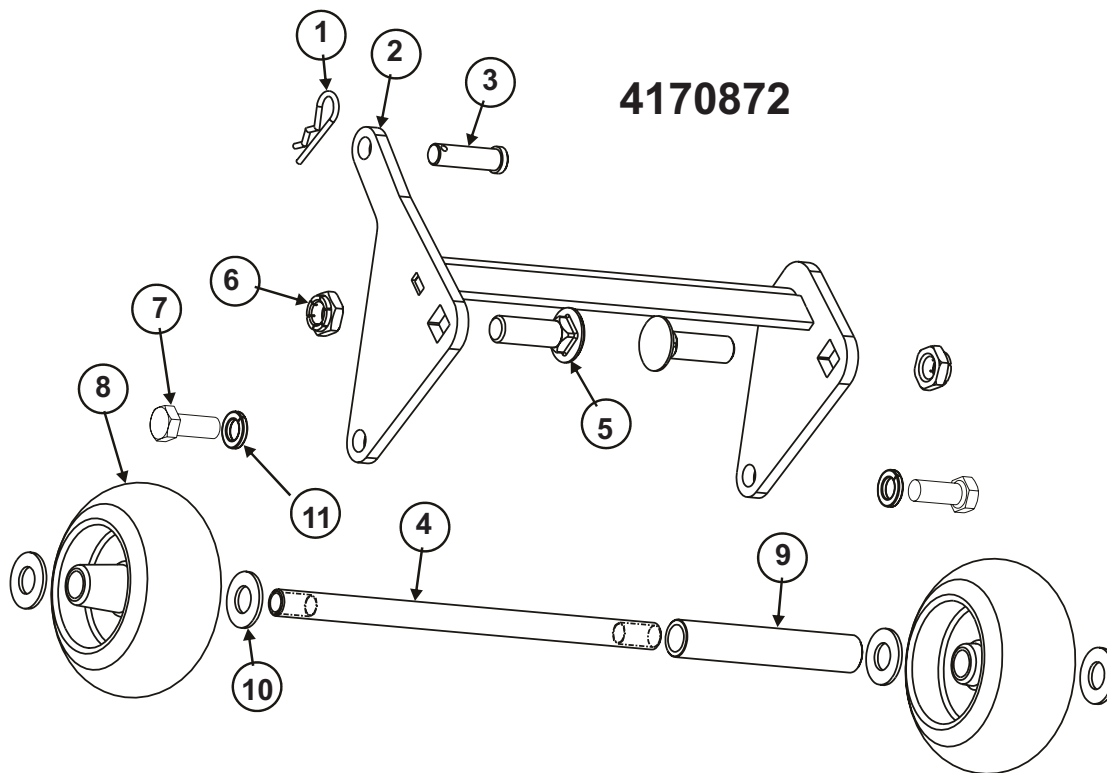
- **Nachi standard grease fill** for sealed and shielded ball bearings is **20% to 30% full** ■ Too much grease can cause excess friction, thereby overheating the bearing and causing remature failure.
- Only a small of grease is required to lubricate a bearing in motion.
- When a bearing is in motion, most of the grease is pushed to the side (channeling) leaving a thin film of oil between the raceways and rolling elements.
- When using open bearings, pack the bearing as follows:



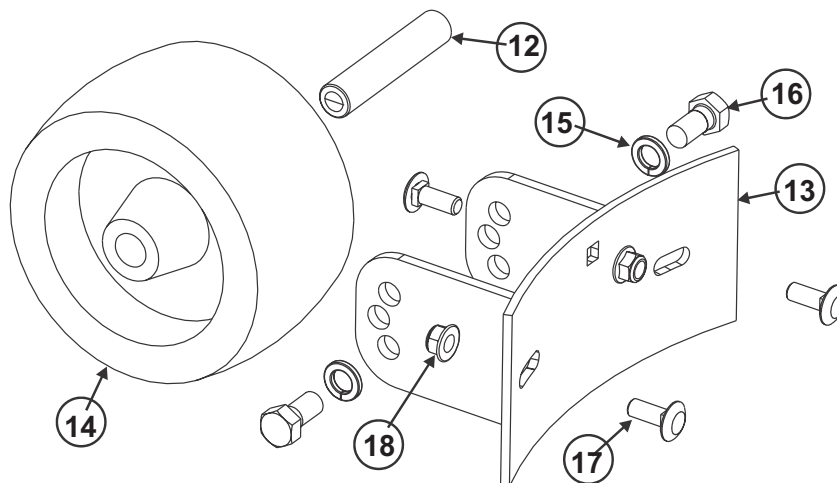
# ANTI SCALP ROLLERS (4170872 & 4175270-83)

## FLEX DECK MOWER

FIGURE 19



### 4175270-83



# FLEX DECK MOWER

## ANTI SCALP ROLLERS (4170872 & 4175270-83)

FIGURE 19

ITEM	PART NO.	DESCRIPTION	QTY
------	----------	-------------	-----

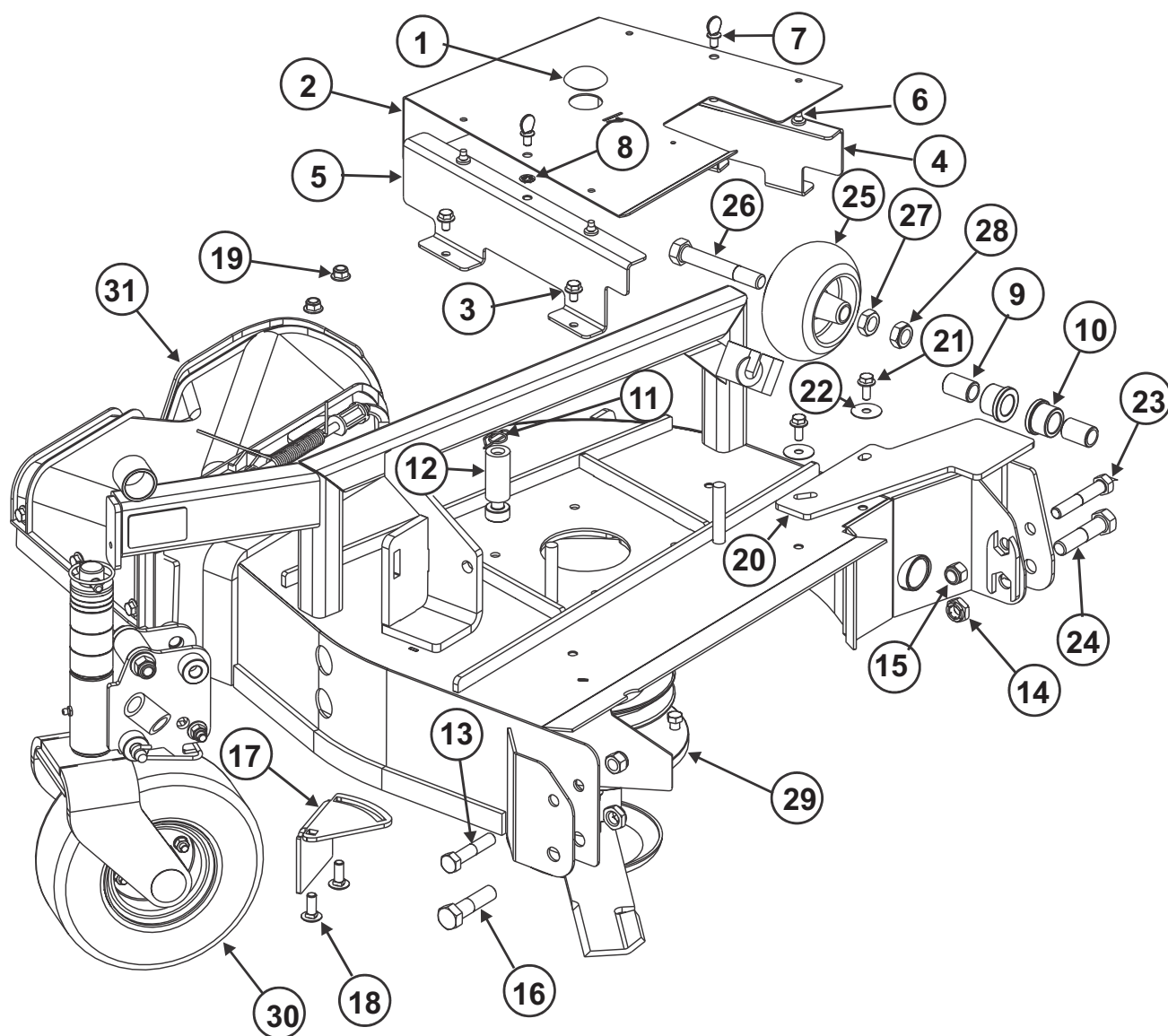
### 4170872

1	64168-1	Pin, 1/8" x 1 13/16" Safety	1
2	4170873	Frame Weldment, 521E/Z Anti-scalp	1
3	64188-32	Pin, 1/2" x 1 3/4" Clevis Yzc	1
4	4170874	Axle Rod, 3300 Anti-Scalp Roller	1
5	64018-54	Bolt, 5/8-11 x 2" Grade 5 Carriage	2
6	64236-04	Nut, 5/8-11 FlexLoc	2
7	64123-39	Bolt, 1/2-13 x 1 1/4" Hex Head Grade 5	2
8	4170739	Wheel, Anti-Scalp 5-5/8" hole	2
9	4170876	Sleeve, 7/8" OD x 5" Long Bushing	1
10	64163-119	Washer, 5/8" SAE Flat	4
11	4170930	Washer, 1/2" Split Lock	2

### 4175270-83

12	4172690-02	Axle Rod, 3300 Anti-Scalp Roller	1
13	4172690-03	Bracket Weldment, 3300 Anti-Scalp	1
14	4172690-04	Wheel, Anti-Scalp 6" x 3.25" x 3/4" ID	1
15	4170930	Washer, 1/2" Split Lock	2
16	4172690-01	Bolt, 1/2-13 x 1" Hex Head Full Thread	2
17	64018-03	Bolt, 3/8-16 x 1" Carriage Grade 5	3
18	64268-03	Nut, 3/8-16 Flanged Hex Nylock	3

FIGURE 20



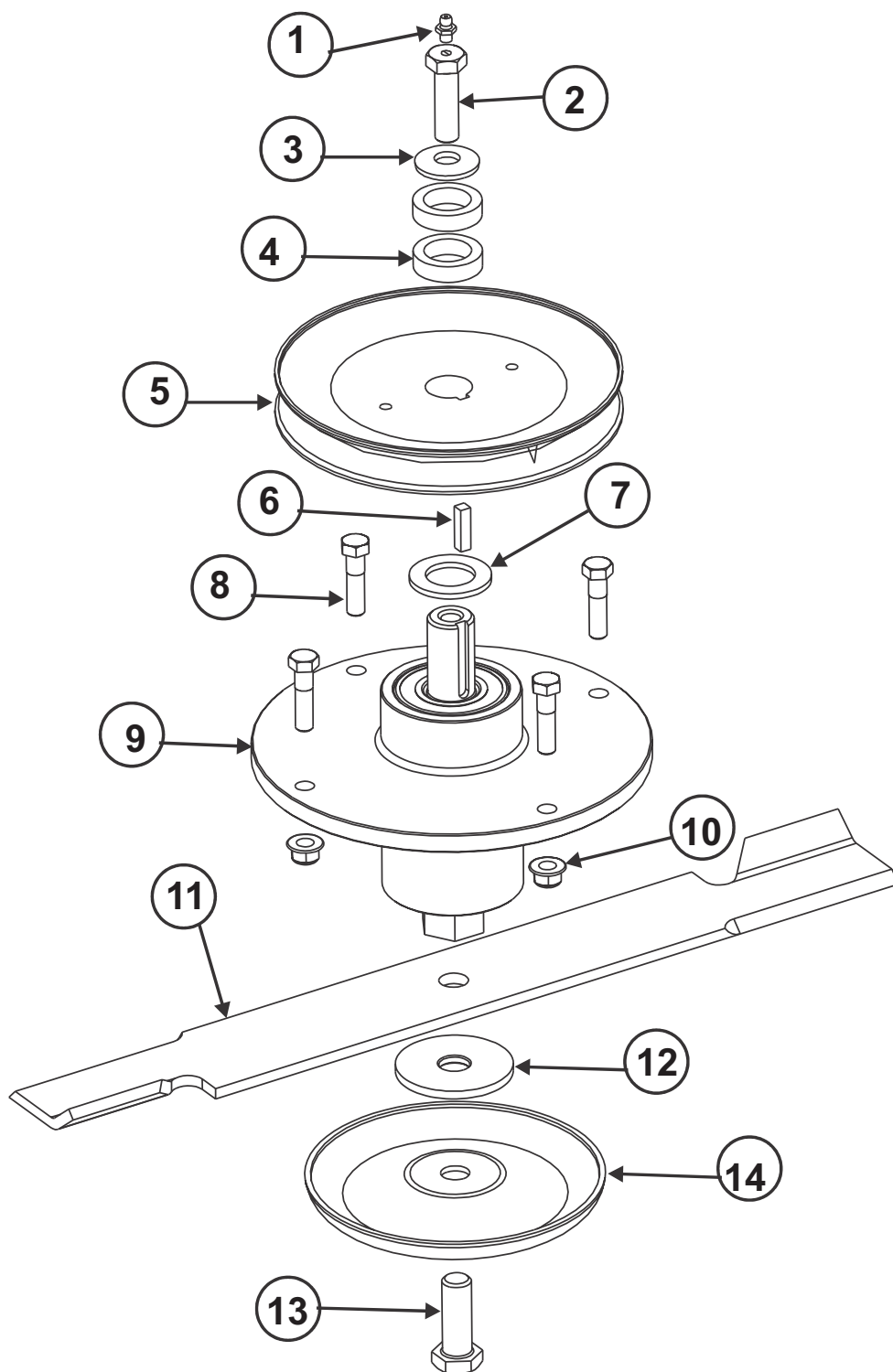
# FLEX DECK MOWER

## DECK 4 WLDMNT & HARDWARE

FIGURE 20

ITEM	PART NO.	DESCRIPTION	QTY
1	4170772	Cover, Hole Plug 1-3/8	1
2	4175270-58	Cover Plate, #4	1
3	64123-92	Bolt, 5/16-18x1/2 Grade 5 FHCS Serrated	4
4	4170879	Guard Weldment, #4 Rear	1
5	4170880	Guard Weldment, #4 Front	1
6	4170734	Bumper, Rubber Button	1
7	4175270-63	Screw, 5/16-18x1/2 Thumb w/ Shoulder	2
8	4175270-64	Nut, 5/16 Push	2
9	4170760	Sleeve, .875x1.39 Lg Bushing	2
10	4170758	Bushing, .875 Bearing	2
11	4175270-13	Pin, 5/8 In Clevis Retaining	1
12	4175270-14	Tube, Belt Keeper, Short	1
13	64123-72	Bolt, 1/2-13 x 2 1/2" Hex Head Grade 5	1
14	64263-04	Nut, 5/8-11 FlexLoc	2
15	64229-05	Nut, 1/2-13 Nyl Hex Lock	2
16	64123-168	Bolt, 5/8-11 x 2 1/2" Hex Head Grade 5	1
17	4170767	Deflector Plate, #5 Deck Grass	1
18	64018-53	Bolt, 3/8-16x3/4 Carriage	2
19	64268-03	Nut, 3/8-16 Flanged Hex Nylock	2
20	4170747	Door, #2/4 Deck Trap	2
21	64123-54	Bolt, 5/16-18x3/4 Grade 5 FHCS Serrated	2
22	64163-119	Washer, 5/16 x 1 1/4 Fender	2
23	64123-31	Bolt, 1/2-13 x 3" Hex Head Gr5	1
24	64123-322	Bolt, 5/8-11 x 2 3/4" Hex Head Grade 5	1
25	4170739	Wheel, Anti-Scalp, 5-5/8" hole	1
26	64123-234	Bolt, 5/8-11x4 Gr5 HH	1
27	64141-45	Nut, 5/8-11 Jam	1
28	64151-42	Nut, 5/8-11 Jam Nyl Lock	1
29		Spindle Assembly, #4 EFS See pgs. 50-51 for Parts Breakdown	1
30	4170894	Yoke Assembly, P'ivoting Wheel	1
31	4170882	Chute Assembly, Extended Grass	1

FIGURE 21



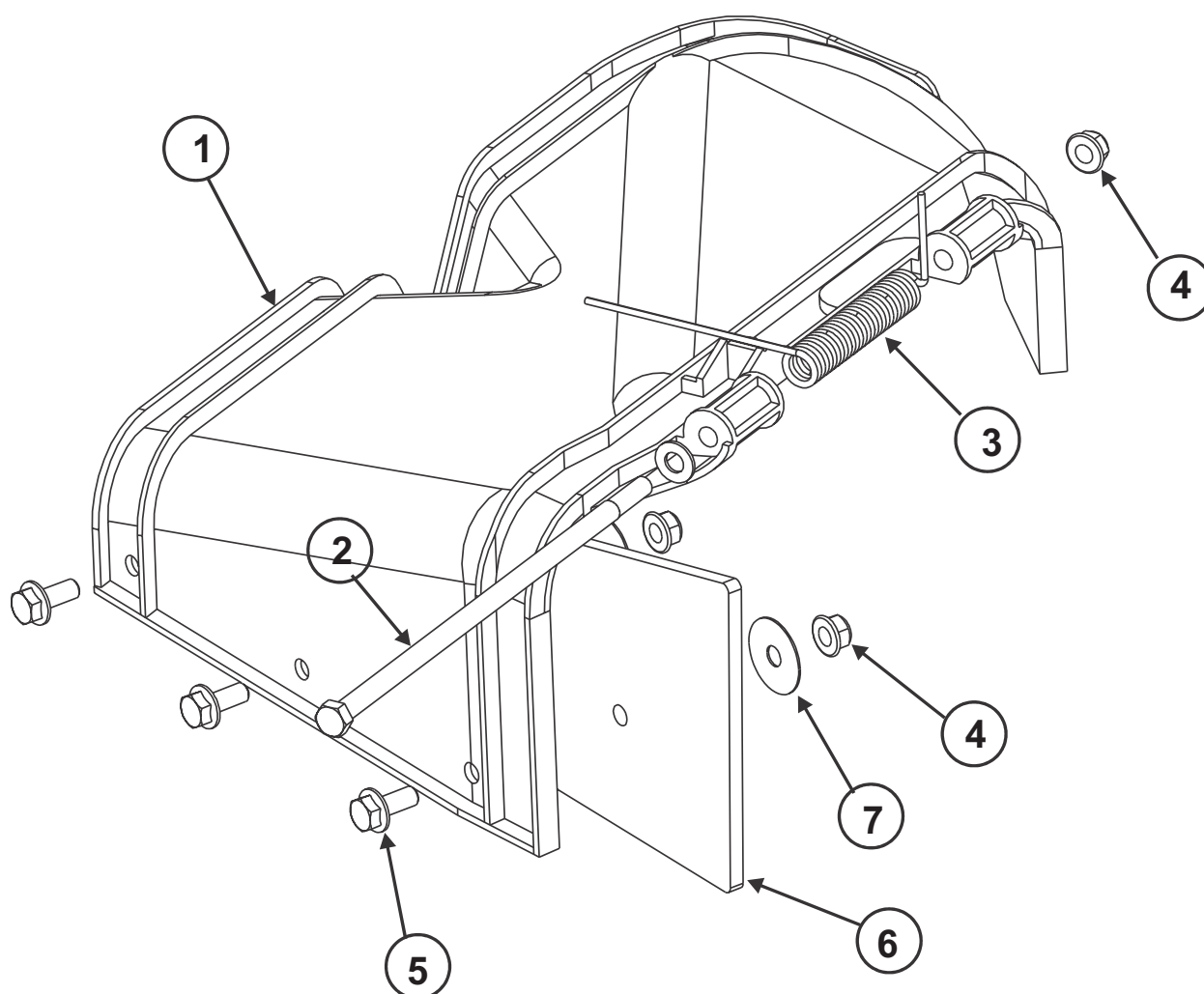
# FLEX DECK MOWER

## DECK #4 SPINDLE ASSEMBLY

FIGURE 21

ITEM	PART NO.	DESCRIPTION	QTY
1	85010N	Fitting, 1/4-28 Straight Grease	1
2	4170741	Bolt, Spindle Pulley 1/2-13 x 1 3/4"	1
3	4170930	Washer, 1/2 Plain Belleville	1
4	4170829	Washer, 3/8 x 1.5x1.01	2
5	4175270-22	Sheave, Deep Groove 6.50 PD	1
6	4175270-53	Key, 1/4inX 1in	1
7	4175270-90	Washer, 1-1/16 x 1-3/4 x 1/8	1
8	64123-70	Bolt, 3/8-16 x 1 1/2" Hex Head Grade 5	4
9		Spindle Assembly, ZT Cast See pgs. 18-19 for Parts Breakdown	1
10	64268-03	Nut, 3/8-16 Flanged Hex Nyloc	4
11	4170730	Blade, 21" x 2 1/2" x 1/4" High Lift	1
	4175861	Blade, 21" Low-Lift	1
	4175862	Blade, 21" Gator Mulching	1
12	4070830	Washer, 2 1/2" x 11/16" x 3/16" Nylon	1
13	64123-211	Bolt, 5/8-18 x 1 3/4" Hex Head Grade 5	1
14	4170794	Blade Disc, Anti-Scalp	1

**FIGURE 22**



# FLEX DECK MOWER

## GRASS CHUTE ASSEMBLY (4170882)

FIGURE 22

ITEM	PART NO.	DESCRIPTION	QTY
------	----------	-------------	-----

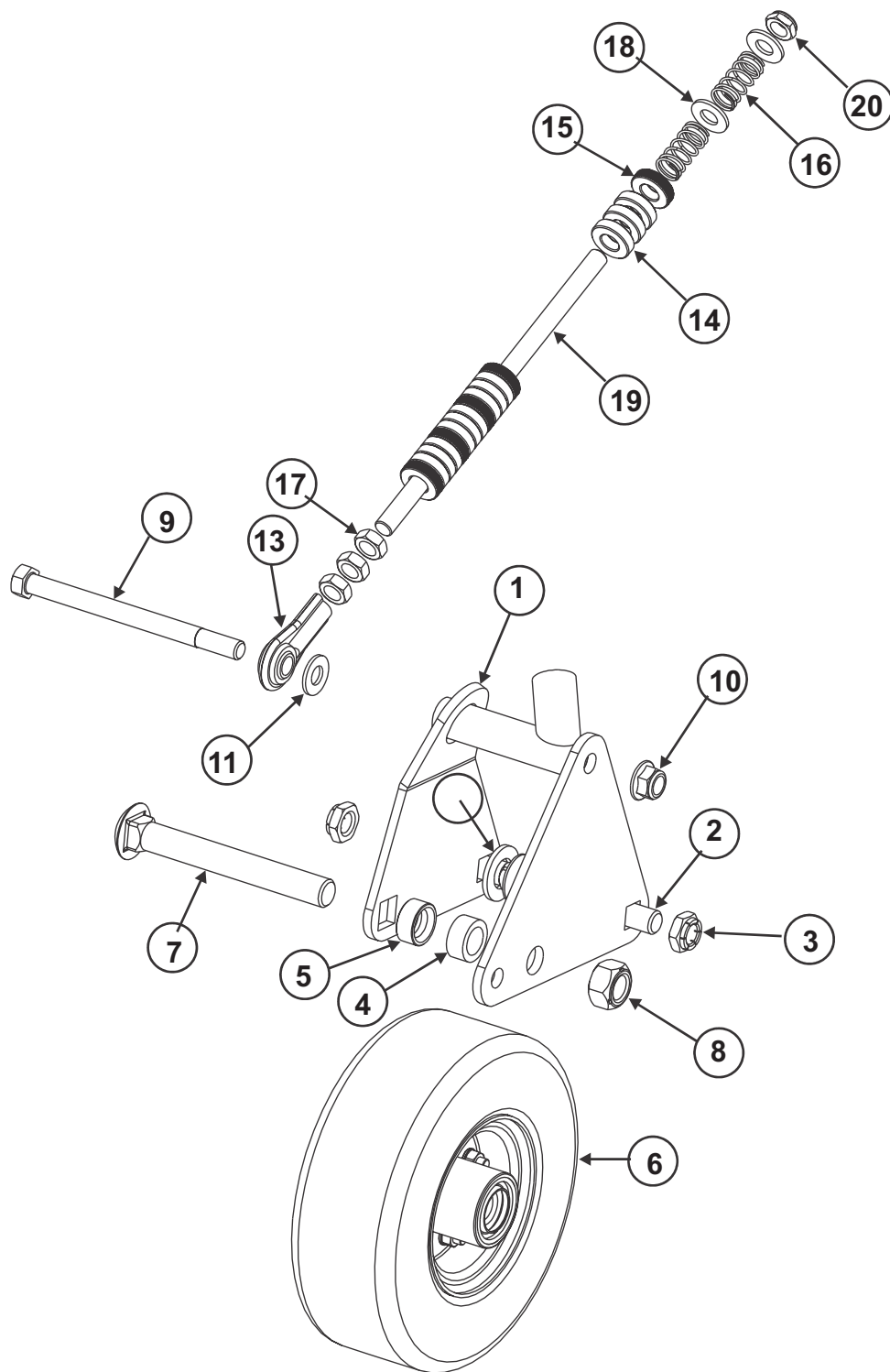
1	4170737	Grass Chute, Modified	1
2	64123-321	Bolt, 5/16-18 x 9 Hex Head Grade 5	1
3	4170883	Spring, Deere RH Torsion	1
4	64229-02	Nut, 5/16-18 Flanged Hex Nylock	4
5	64123-54	Bolt, 5/16-18x3/4" Grade 5 FHCS Serrated	3
6	4170736	Chute Extension, Grass Rubber	1
7	64163-119	Washer, 5/16x1 1/4 Fender	3



# LEFT REAR WHEEL ASSEMBLY (4175270-94)

FLEX  
DECK  
MOWER

FIGURE 23



# FLEX DECK MOWER

## LEFT REAR WHEEL ASSEMBLY (4175270-94)

FIGURE 23

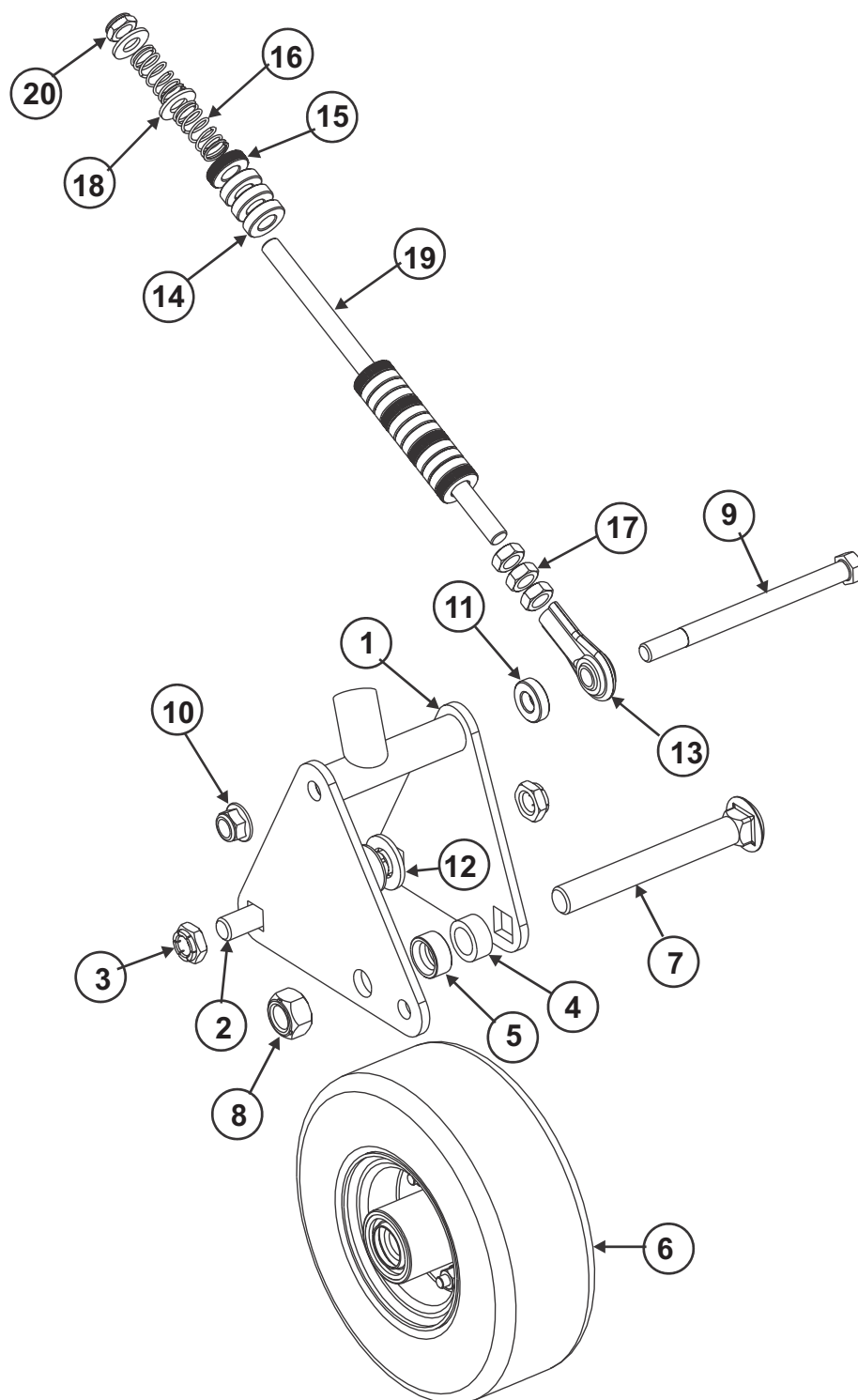
ITEM	PART NO.	DESCRIPTION	QTY
------	----------	-------------	-----

1	4175270-61	Wheel Weldment, Left Rear	1
2	64123-168	Bolt, 5/8-11 x 2 1/4" Grade 5 Carriage	2
3	64236-04	Nut, 5/8-11 FlexLoc	2
4	4170770	Spacer, 1.13 OD x .75 ID x .5	1
5	4170753	Spacer, 3/4" Axle Bolt	1
6	4170724	Wheel Assembly, 9 x 3.5 Reliance DM	1
7	64018-52	Bolt, 3/4-10 x 6" Grade 5 Carriage	1
8	4170924	Nut, 3/4-10 Stover Swaged	1
9	64123-317	Bolt, 1/2-13 x 6 1/2" Hex Head Grade 5	1
10	64229-05	Nut, 1/2-13 Flanged Hex Nylock	1
11	64163-118	Washer, 1/2" SAE Flat	1
12	64163-110	Washer, 3/4 SAE Flat	2
13	4170887	Rod End, 1/2-20 Female	1
14	4170886	Spacer, 5/16" Thk Deck Height	12
15	4170888	Spacer, 5/16" Thk Knurled	5
16	4170889	Spring, .72 x 1.5 x .063 Compression	2
17	64151-43	Nut, 1/2-20 Hex Jam	3
18	64163-118	Washer, 1/2" SAE Flat	2
19	4170890	Rod, Deck Lift Lock	1
20	64151-44	Nut, 1/2-20 Jam Nyl Lock	1

## RIGHT REAR WHEEL ASSEMBLY (4175270-95)

**FLEX  
DECK  
MOWER**

**FIGURE 24**



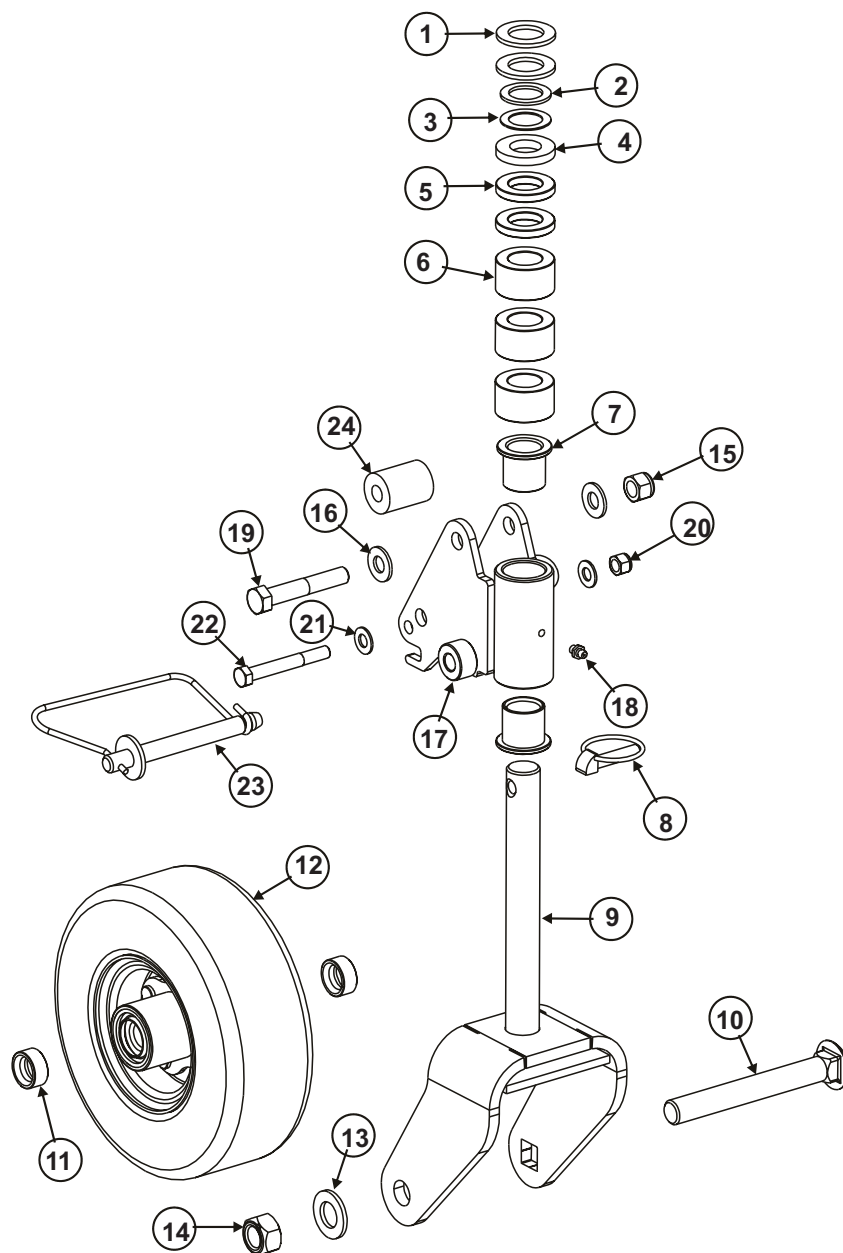
# FLEX DECK MOWER

## RIGHT REAR WHEEL ASSEMBLY (4175270-95)

FIGURE 24

ITEM	PART NO.	DESCRIPTION	QTY
1	4170893	Wheel Weldment, Right Rear	1
2	64123-168	Bolt, 5/8-11 x 2 1/4" Grade 5 Carriage	2
3	64236-04	Nut, 5/8-11 FlexLoc	2
4	4170770	Spacer, 1.13 OD x .75 ID x .5	1
5	4170753	Spacer, 3/4" Axle Bolt	1
6	4170724	Wheel Assembly, 9 x 3.5 Reliance DM	1
7	64018-52	Bolt, 3/4-10 x 6" Grade 5 Carriage	1
8	4170924	Nut, 3/4-10 Stover Swaged	1
9	64123-317	Bolt, 1/2-13 x 6 1/2" Hex Head Grade 5	1
10	64229-05	Nut, 1/2-13 Flanged Hex Nylock	1
11	4170886	Spacer, 5/16" thk deck height	1
12	64163-110	Washer, 3/4 SAE Flat	2
13	4170887	Rod End, 1/2-20 Female	1
14	4170886	Spacer, 5/16" Thk Deck Height	12
15	4170888	Spacer, 5/16" Thk Knurled	5
16	4170889	Spring, .72 x 1.5 x .063 Compression	2
17	64151-43	Nut, 1/2-20 Hex Jam	3
18	64163-118	Washer, 1/2" SAE Flat	2
19	4170890	Rod, Deck Lift Lock	1
20	64151-44	Nut, 1/2-20 Jam Nyl Lock	1

FIGURE 25



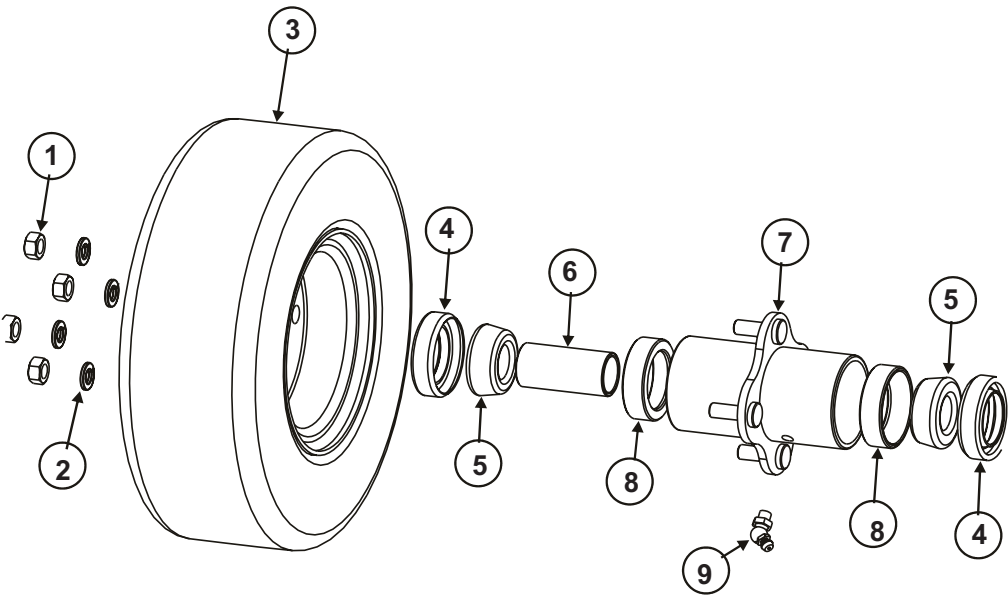
# FLEX DECK MOWER

## DECK #4 WHEEL YOKE ASSEMBLY (4170894)

FIGURE 25

ITEM	PART NO.	DESCRIPTION	QTY
1	4175270-90	Washer, 1-1/16" x 1-3/4" x 1/8"	2
2	4170932	Washer, 1" ID .06 SS Shim	1
3	4170931	Washer, 1" ID .03 SS Shim	1
4	4170759	Spring, Wheel Yoke 1-0 Urethane	1
5	64163-07	Spacer, 1" ID x 1-3/4" OD x 1/4"	2
6	4170751	Spacer, 1 3/4" OD x 1 1/16" ID x 1"	3
7	4170768	Bushing, 1" ID x 1-1/4" OD x 1-1/4" Flanged	2
8	4170925	Pin, 3/8" Dia Lynch Locking	1
9	4170893	Yoke Weldment, 9"	1
10	64018-52	Bolt, 3/4-10 x 6" Carriage Grade 5	1
11	4170753	Spacer, 3/4" Axle Bolt	2
12	4170724	Wheel Assembly, 9" x 3.5" Solid DM	1
13	64163-110	Washer, 3/4" SAE Flat	1
14	4170924	Nut, 3/4-10 Stover Swaged	1
15	64229-05	Nut, 1/2-13 Nylon Hex Lock	1
16	64163-118	Washer, 1/2" SAE Flat	2
17	4170898	Yoke Weldment, Pivoting	1
18	85010N	Fitting, 1/4-28 Straight Grease	1
19	64123-31	Bolt, 1/2-13 x 3" Hex Head Grade 5	1
20	64229-03	Nut, 3/8-16 Hex Nyloc	1
21	64163-61	Washer, 3/8" Flat SAE	2
22	64123-75	Bolt, 3/8-16 x 3" Hex Head	1
23	4170898	Pin, 1/2" Dia x 3 1/2" Snap Spring	1
24	4170757	Bushing, Urethane Spring	1

FIGURE 26



# FLEX DECK MOWER

## 9" X 3.5" WHEEL ASSEMBLY (4170724)

FIGURE 26

ITEM	PART NO.	DESCRIPTION	QTY
------	----------	-------------	-----

1	64025-02	Nut, 5/16-18 Hex	4
2	64006-02	Washer, 5/16" Split Lock	4
3	4170724	Tire, Carlisle Reliance No-Flat Smooth	1
4	4170732	Seal, 1 1/8" ID Trb Bearing	2
5	4170731	Bearing, Tapered Roller 3/4" ID	2
6	4170754	Spacer, 3/4" Wheel Bearing	1
7	4170841	Hub, 9/11" Demountable	1
8	4170733	Bearing Race Insert, 3/4" TRB	2
9	38388	Fitting, 1/4-28 45 Deg. Grease	1

**NOTE:** Wheels are shipped unlubricated from the factory. Insure proper lubrication, bearing pre-loading, and torque specifications are met. Use Loctite on all bolts. Tighten hub nuts to **145-170 in-lbs.**

**NOTE:** All wheels should be lubricated, insuring grease passes through the seals, after every 8 hours of operation. (See Section 5 of the **Owner's Manual**).

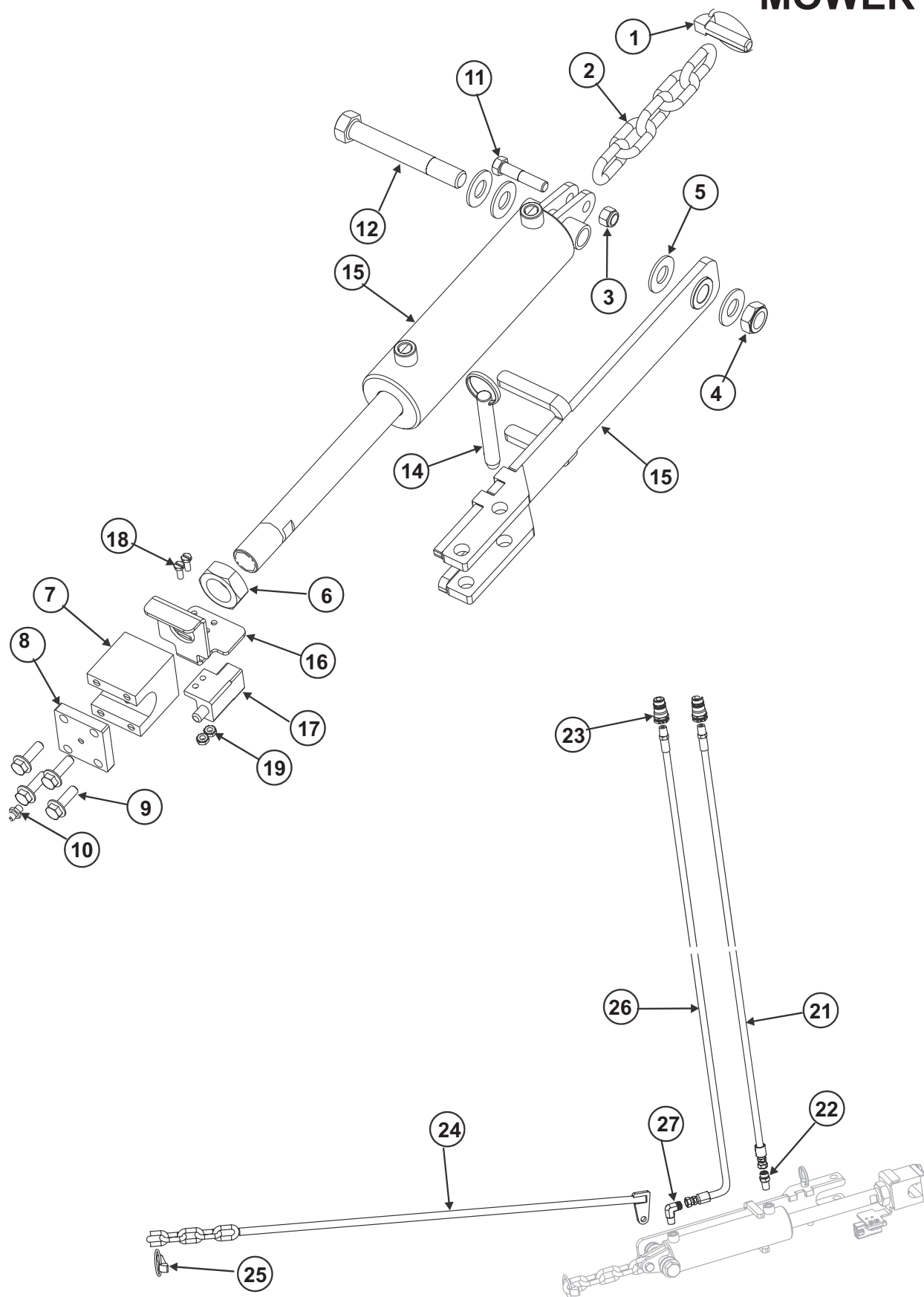
**NOTE:** When checking bearing preload, wheels should be placed on the spindles loose enough to spin **freely** only one complete revolution when spun by hand. Insure spacers are properly installed.



# DECK LIFT CYLINDER ASSEMBLY (4170899)

FIGURE 27

**FLEX  
DECK  
MOWER**



# FLEX DECK MOWER

## DECK LIFT CYLINDER ASSEMBLY (4170899)

FIGURE 27

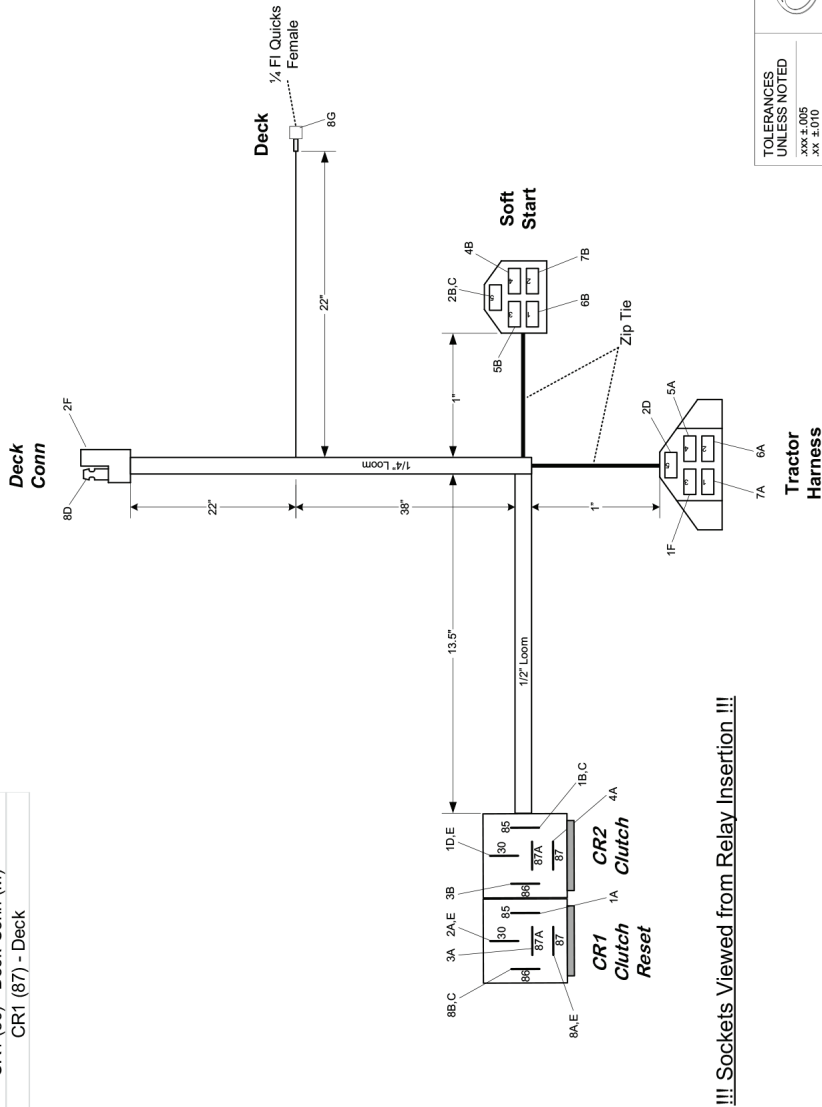
ITEM	PART NO.	DESCRIPTION	QTY
------	----------	-------------	-----

1	4170925	Pin, 7/16" Dia Lynch, Locking	1
2	4170900	Chain, 5/16" x 5 Links	1
3	64229-03	Nut, 3/8-16 Hex Nyloc	1
4	64151-42	Nut, 5/8-11 Jam Nyl Lock	1
5	64163-119	Washer, 5/8" SAE Flat	4
6	64151-40	Nut, 1-14 Hex Jam	1
7	4170902	Block, Hydraulic Cylinder Pivot	1
8	4170903	Lock Plate, Hydraulic Cylinder	1
9	4175270-93	Bolt, 5/16-18x1 GR5 FHCS Serrated	4
10	85010N	Fitting, 1/4-28 Straight Grease	1
11	64123-87	Bolt, 3/8-16 x 1 3/4" Hex Head Grade 5	1
12	64123-323	Bolt, 5/8-11 x 4 1/2" Hex Head Grade 8	1
13	4170904	Cylinder, Hydraulic Deck Lift	1
14	4170937	Pin, 1/2" Dia x 2 1/2" Detent	1
15	4170905	Lock Weldment, Deck Latch	1
16	4170815	Switch Plate, Hydraulic Cylinder	1
17	4170742	Switch, DPST N/O N/C	1
18	64152-46	Screw, 10-24 x 1/2" S1 Hex Machine	2
19	64229-10	Nut, #10-24 Keps	2


21	4170727	Hose Assembly, 1/4" HP x 80" Long	1
22	4170906	Hyd Fitting, 4 ORFS x 4 MPT ST	1
23	4170725	Fitting, Hydraulic QD Male Steiner	2
24	4170907	Rod Weldment, Deck Lift	1
25	4170925	Pin, 7/16" Dia Lynch, Locking	1
26	4170729	Hose Assembly, 1/4" HP x 76" Long	1
27	4175270-62	Fitting, 4 ORFS - 4 MPT 90	1

FIGURE 28

Wire Color Code Matrix			Connector Matrix						
Wire #	Gauge	Color/Stripe	From - To	Connector	Mfg	Housing P/N	Contact P/N	Seal P/N	Other P/N
1 A - B	16	Lt Blue	CR1 (85) - CR2 (85)	Tractor Harness	Packard	3138080	2971962		
1 C - D	16	Lt Blue	CR2 (85) - CR2 (30)	Soft Start	Packard	2973422	2965142		
1 E - F	16	Lt Blue	CR2 (30) - Tractor Harness (P3)	CR1, 2	Packard	12033871	12015865 (16ga)		12033872 (TPA)
2 A - B	16	Black	CR1 (30) - Soft Start (P5)	CR1, 2			12052227 (12ga)		
2 C - D	16	Black	Soft Start (P5) - Tractor Harness (P5)	Deck Conn	Terminal Supply	PH-2			
2 E - F	16	Black	CR1 (30) - Deck Conn (F)						
3 A - B	16	Yellow	CR1 (87A) - CR2 (86)						
4 A - B	16	Dk Blue	CR2 (87) - Soft Start (P4)						
5 A - B	16	Black/White	Tractor Harness (P4) - Soft Start (P3)						
6 A - B	16	Blue/Red	Tractor Harness (P2) - Soft Start (P1)						
7 A - B	16	Grey	Tractor Harness (P1) - Soft Start (P2)						
8 A - B	16	Green	CR1 (87) - CR1 (86)						
8 C - D	16	Green	CR1 (86) - Deck Conn (M)						
8 E - G	16	Green	CR1 (87) - Deck						
				Deck					



!!! Sockets Viewed from Relay Insertion !!!



TOLERANCES  
UNLESS NOTED

XXX ± .005  
XX ± .010  
X ± .015

HOLES  
FRACT ± .000  
FRACT ± .002  
FRACT ± .005  
FRACT ± .010  
FRACT ± .015  
FRACT ± .020  
FRACT ± .025  
FRACT ± .030  
FRACT ± .035  
FRACT ± .040  
FRACT ± .045  
FRACT ± .050  
FRACT ± .055  
FRACT ± .060  
FRACT ± .065  
FRACT ± .070  
FRACT ± .075  
FRACT ± .080  
FRACT ± .085  
FRACT ± .090  
FRACT ± .095  
FRACT ± .100

GRIND  
GRIND #60

SHEET  
1 of 1

MATERIAL  
STRANDED GXL W

**NOTE:**  
Tape All Loom Ends  
Connectors viewed from wire entry  
\*\*\*except relay sockets\*\*\*

# FLEX DECK MOWER

## WIRE HARNESS ASSEMBLY

FIGURE 29

ITEM	PART NO.	DESCRIPTION	QTY
1	4170723	RELAY, 40A 12V AUTOMOTIVE	2
2	64152-46	SCREW, 10-24 X 1/2" HH SS MACHINE	2
2	64229-10	NUT, #10-24 HEX SELF-LOCKING	2
4	4173443.7	BRKT-OIL RES & RELAYS	1
5	4175270-01	HARNESS -450 FLEX DECK	1
	4170728	HARNESS-440 (ORDER SEPERATELY)	

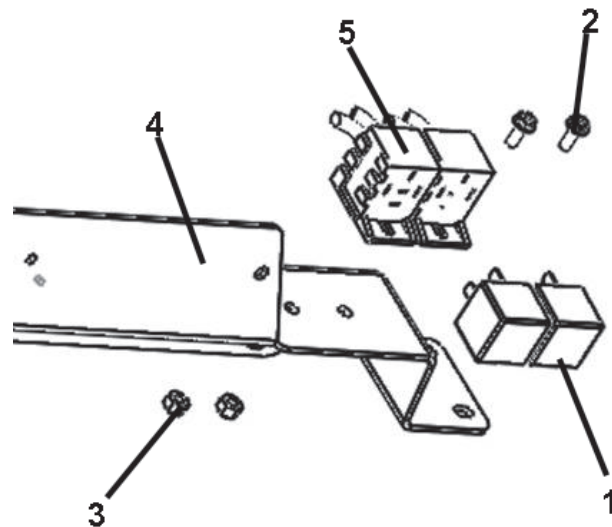
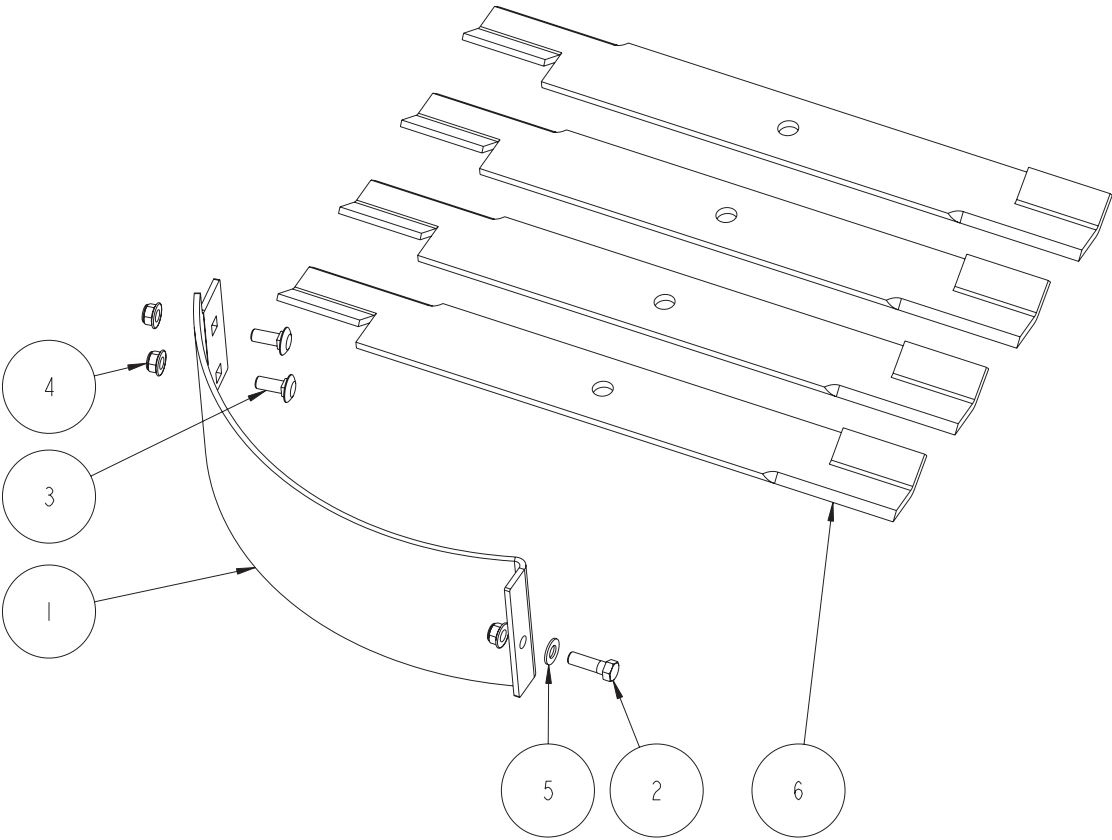


FIGURE 30



# FLEX DECK MOWER

## MULCHING BAFFLE KIT - 75-71313

FIGURE 30

ITEM	PART NO.	DESCRIPTION	QTY
------	----------	-------------	-----

1	4170908	MULCHING BAFFLE, 80EFS	1
2	64123-16	BOLT, 3/8-16 X 1 1/4" HEX HEAD GRADE 5	1
3	64018-3	BOLT, 3/8-16 X 1" CARRIAGE GRADE 5	2
4	64268-03	NUT, 3/8-16 FLANGED HEX NYLON LOCK	3
5	64163-61	WASHER, 3/8" SAE FLAT	1
6	4175861	BLADE-21" LOW LIFT	4
	75-71313	BAFFLE KIT, 80EFS MULCHING	
		(INCLUDES ITEMS 1-6)	

**SCHILLER GROUNDS CARE, INC.**  
**ONE BOB-CAT LANE**  
**P.O. BOX 469**  
**JOHNSON CREEK, WI 53038**  
**920-699-2000**  
**[www.schillergc.com](http://www.schillergc.com)**



©Schiller Grounds Care, Inc. 2010