



MODELS:

544908A-LAWNIRE IV 4HP HONDA
S/N 11248 and Above

544909C-LAWNIRE IV 6.5HP B&S
S/N 5300 and Above

544910A-LAWNIRE V 4HP HONDA
S/N 7366 and Above

544911C-LAWNIRE V 6.5HP B&S
S/N 2200 and Above



OP / PARTS MANUAL

MAN 4175946
Rev. A 03-2018

CALIFORNIA PROPOSITION 65



WARNING: Cancer and Reproductive Harm - www.P65Warnings.ca.gov.



ADVERTENCIA: Cáncer y Daño Reproductivo - www.65Warnings.ca.gov.

WARNING

The engine exhaust from this product contains chemicals known to the State of California to cause cancer, birth defects or other reproductive harm.

ADVERTENCIA

El estado de California hace saber que los gases de escape de este producto contienen productos químicos que producen cáncer, defectos de nacimiento y otros daños en el proceso de reproducción humana.

IMPORTANT!

It is a violation of California Public Resource Code Section 4442 or 4443 to use or operate the engine on any forest-covered, brush-covered or grass-covered land unless the engine is equipped with a spark arrestor, as defined in Section 4442, maintained in effective working order or the engine is constructed, equipped, and maintained for the prevention of fire.

To acquire a spark arrestor for your unit, see your Engine Service Dealer.

Please refer to the engine manufacturer's information included with the machine.

Labeled power ratings are supplied by the engine manufacturer in accordance with SAE testing and gross/net power rating standards (J1940, J1995, J1349).

IMPORTANT MESSAGE

Thank you for purchasing this Schiller Grounds Care, Inc. product. You have purchased a world class product, one of the best designed and built anywhere.

This machine comes with a Technical Manual containing safety, operation, parts, maintenance and service information. The useful life and good service you receive from this machine depends to a large extent on how well you read and understand this manual. Treat your machine properly, lubricate and adjust it as instructed, and it will give you many years of reliable service.

Your safe use of this Schiller Grounds Care, Inc. product is one of our prime design objectives. Many safety features are built in, but we also rely on your good sense and care to achieve accident-free operation. For best protection, study the manual thoroughly. Learn the proper operation of all controls. Observe all safety precautions. Follow all instructions and warnings completely. Do not remove or defeat any safety features. Make sure those who operate this machine are as well informed and careful in its use as you are.

See a Schiller Grounds Care, Inc. dealer for any service or parts needed. Schiller Grounds Care, Inc. service ensures that you continue to receive the best results possible from Schiller Grounds Care, Inc. products. You can trust Schiller Grounds Care, Inc. replacement parts because they are manufactured with the same high precision and quality as the original parts.

Schiller Grounds Care, Inc. designs and builds its equipment to serve many years in a safe and productive manner. For longest life, use this machine only as directed in the manual, keep it in good repair and follow safety warnings and instructions. You'll always be glad you did.

Schiller Grounds Care, Inc.
One Bob Cat Lane
Johnson Creek, WI 53038-0469

TABLE OF CONTENTS

FIGURES

PAGE

SAFETY.....		2
SAFETY AND OPERATION DECALS.....		3
ASSEMBLY/SET-UP INSTRUCTIONS.....		4, 5
CONTROLS.....		7, 8
OPERATION.....		9, 10
SERVICE.....		11
STORAGE.....		12
TRANSPORTING.....		13
SPECIFICATIONS.....		14
PARTS SECTION.....		15
FRAME GROUP.....	FIGURE 1.....	16, 17
MAIN GROUP-LAWNNAIRE IV.....	FIGURE 2.....	18, 19
MAIN GROUP-LAWNNAIRE V.....	FIGURE 3.....	20, 21
HANDLE GROUP.....	FIGURE 4.....	22, 23
TINE WHEEL GROU.....	FIGURE 5.....	24, 25
DRUM GROUP.....	FIGURE 6.....	26, 27
DECAL GROUP-LAWNNAIRE IV.....	FIGURE 7.....	28, 29
DECAL GROUP-LAWNNAIRE V.....	FIGURE 8.....	30, 31

NOTICE !!!

Unauthorized modifications may present **extreme** safety hazards to operators and bystanders and could also result in product damage.

Schiller Grounds Care, Inc. strongly warns against, rejects and disclaims any modifications, add-on accessories or product alterations that are not designed, developed, tested and approved by Schiller Grounds Care, Inc.'s Engineering Department. Any Schiller Grounds Care, Inc. product that is altered, modified or changed in any manner not specifically authorized after original manufacture—including the addition of “after-market” accessories or component parts not specifically approved by Schiller Grounds Care, Inc.—will result in the Schiller Grounds Care, Inc. Warranty being voided.

Any and all liability for personal injury and/or property damage caused by any unauthorized modifications, add-on accessories or products not approved by Schiller Grounds Care, Inc. will be considered the responsibility of the individual(s) or company designing and/or making such changes. Schiller Grounds Care, Inc. will vigorously pursue full indemnification and costs from any party responsible for such unauthorized post-manufacture modifications and/or accessories should personal injury and/or property damage result.



This symbol means:
ATTENTION!
BECOME ALERT!

Your safety and the safety of others is involved.

Signal word definitions:

The signal words below are used to identify levels of hazard seriousness. These words appear in this manual and on the safety labels attached to Schiller Grounds Care, Inc. machines. For your safety and the safety of others, read and follow the information given with these signal words and/or the symbol shown above.

DANGER

DANGER indicates an imminently hazardous situation which, if not avoided, **WILL** result in death or serious injury.

WARNING

WARNING indicates a potentially hazardous situation which, if not avoided, **COULD** result in death or serious injury.

CAUTION

CAUTION indicates a potentially hazardous situation which, if not avoided, **MAY** result in minor or moderate injury. It may also be used to alert against unsafe practices or property damage.

CAUTION

CAUTION used without the safety alert symbol indicates a potentially hazardous situation which, if not avoided, **MAY** result in property damage.



SCHILLER GROUNDS CARE

Model

XXXXXXX

Serial Number

XXXXXXXXXXXX

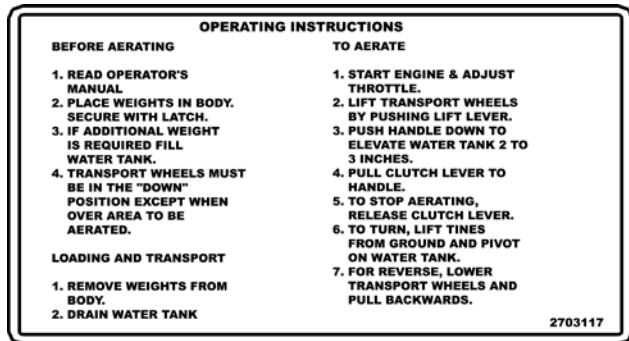
Schiller Grounds Care, Inc.

One Bob Cat Lane

Johnson Creek, WI 53038

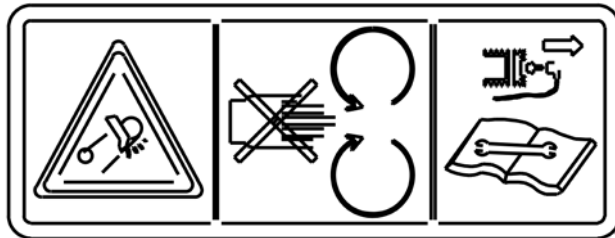
MODEL NUMBER: This number appears on sales literature, technical manuals and price lists.

SERIAL NUMBER: This number appears only on your mower. It contains the model number followed consecutively by the serial number. Use this number when ordering parts or seeking warranty information.



Operating Instructions

This decal can be found on top of the handlebar assembly. It tells the operator the steps involved; prior to aerating; loading and transporting and how to aerate.



Warning Hands In Moving Components

This decal is located on the main frame and provides the operator with three message warnings.

(1) The symbol on the left shows the possible result of working on machinery with safety shields removed. Hands and fingers may become entangled in belts. **DO NOT** operate the unit without safety shields in place.

(2) The center symbol warns the operator and/or bystanders to keep hands out of moving components.

(3) The right symbol instructs the operator to read the service section of the operators manual. Disable spark plug wire before performing any service or maintenance on the unit.



Engine Oil Level

This decal is located on the main frame, in front of the engine. It tells the operator to have the engine level prior to checking the oil level.



Danger Hands And Feet

This decal is located on the main frame and informs the operator of areas which are capable of serious injury.

The symbol shows fingers being cut or severed. **DO NOT** place hands, feet, fingers or toes under aerator while operating the unit.



Throttle Control

This decal is located on the handlebar next to the engine throttle control. It tells the operator which direction to move the engine throttle for the desired engine speed. The throttle control decal uses the turtle to represent slower engine speeds, and the rabbit to represent faster engine speeds.



Handle Warning-Lawnair IV Only

This decal is located on the lower end of the handlebars. It informs the operator that the folding handlebars need to be securely locked in place prior to aerating.

GENERAL NOTE: FRONT, REAR, RIGHT HAND AND LEFT HAND REFERENCES BELOW ARE WITH RESPECT TO AN OPERATOR AT THE CONTROLS.

UNPACKING

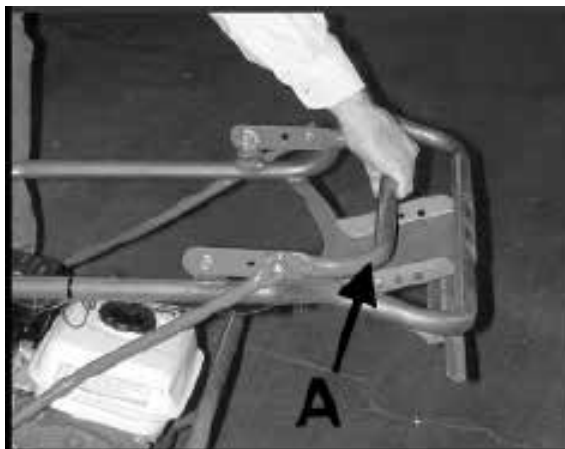
Unpacking the aerator entails securing the handle and rolling the unit off the shipping pallet.

1. Cut the banding securing the aerator to the pallet

⚠ WARNING

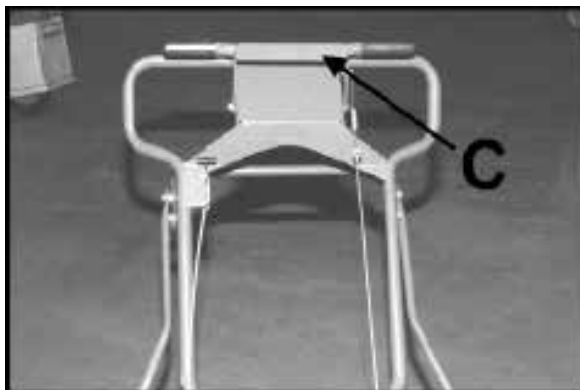
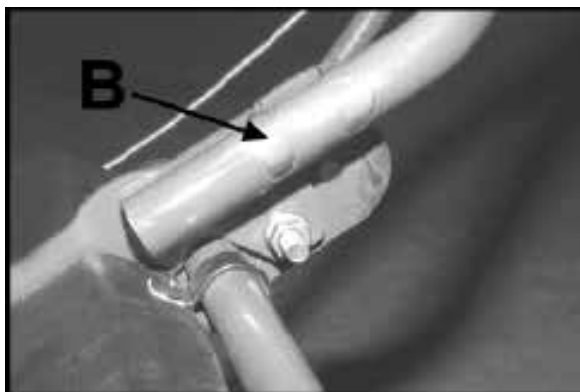
Banding is under tension and may snap back when cut. Wear eye protection and stay clear when cutting the band.

2. Unfold handle by pulling on the transport lift handle **A**.



FOR LAWN Aire V MODELS

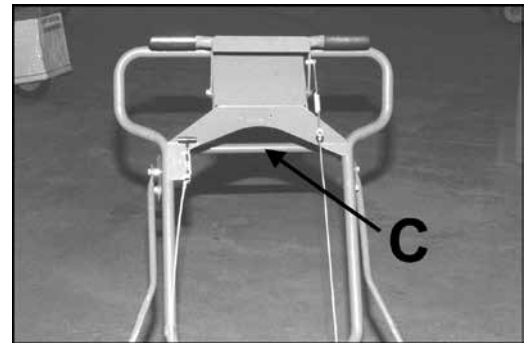
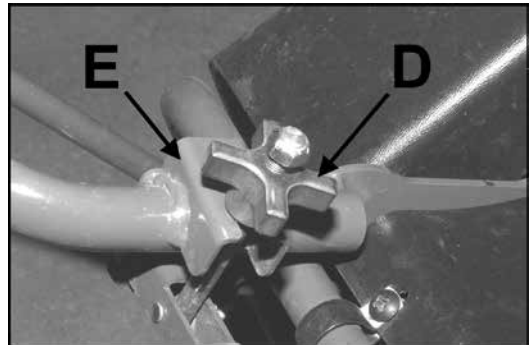
1. Bolt the handle **B** in place, as shown.
2. Pull up on the transport lift handle **C** to raise the aerator to the transport position.
3. Carefully roll the unit off the pallet.



FOR LAWNAIRE IV MODELS

1. Flip the handle locking knobs **D** up into position over the handle bracket **E** and tighten. **HAND TIGHTEN ONLY!**
2. Pull up on the transport lift handle **C** to raise the aerator to the transport position.
3. Carefully roll the unit off the pallet.

NOTE: If the folding handle will not be used, bolt the handle in place. See instructions in the preceding section, for Lawnaire V Models.

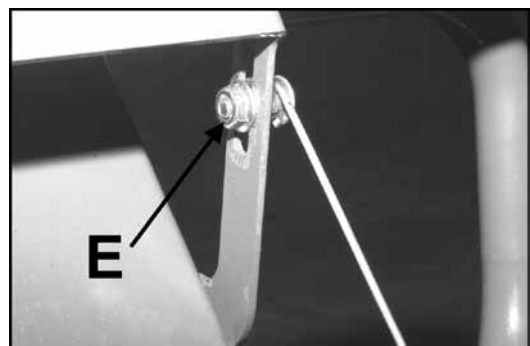
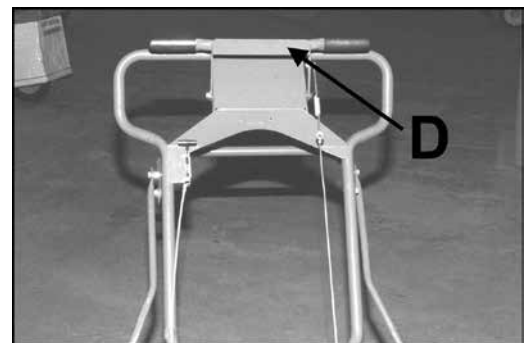


CHECKING THE CLUTCH CABLE

The clutch cable is adjusted prior to shipping; however, it should be checked before the unit is put into service.

1. Pull the clutch control handle **D** back and down and make sure the idler engages the belt.
2. Release the clutch control handle **D** and make sure the belt disengages completely.
3. If adjustment is necessary, loosen nut **E** on the clutch spring hardware and adjust its position in the slot of the clutch lever.

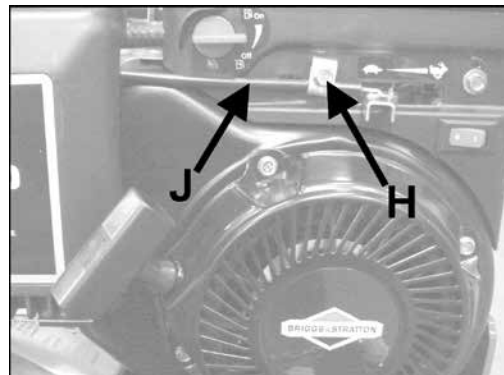
NOTE: Spring extension should not exceed .25 inch



CHECKING THE THROTTLE CABLE- The throttle cable is adjusted prior to shipping; however, it should be checked before the unit is put into service. The throttle control should freely move in a full range of motion forward and backward. If necessary, the throttle cable can be adjusted as follows:

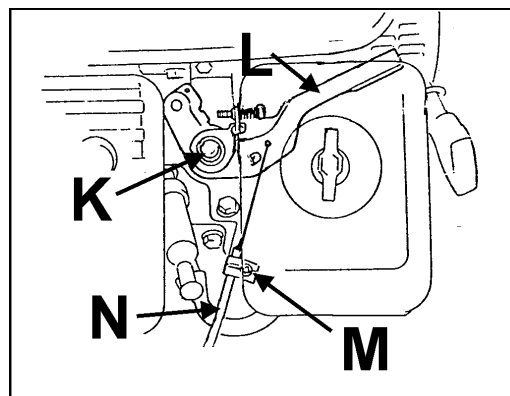
FOR BRIGGS AND STRATTON ENGINES:

2. Loosen the casing clamp screw **H**.
3. Push throttle lever all the way forward, then back off 1/16" - 1/8" (1.5 - 3 mm).
4. Push throttle cable casing **J** through casing clamp until fully advanced.
5. Tighten casing clamp screw **H**.



FOR HONDA ENGINES:

1. Loosen the throttle lever friction nut **K** enough to allow free movement of the throttle lever **L**.
2. Loosen throttle cable clamp **M**.
3. Push throttle lever all the way forward.
4. Push throttle cable sleeve **N** up through cable clamp until fully advanced.
5. Tighten the casing clamp screw **M**.



INITIAL BELT SEATING AND ADJUSTMENT

Proper tensioning of V-belts is the single most important factor necessary for long, satisfactory operation. Too little tension will result in slippage, causing rapid belt and pulley wear. Too much tension can result in excessive stress on belts, bearings, shafts, reduced efficiency and operator fatigue due to excessive force required to hold the bail closed.

1. Operate the drive a few minutes to seat the belts in the sheave grooves. Observe the operation of the drive under its highest load condition (usually starting).
2. Check the tension on a new drive several times during the first 2 hours of operation.
3. Keep the drive free of foreign material which might cause slippage or damage to the belt and sheave surfaces.
4. If a V-belt slips, it is too loose. **NEVER** apply belt dressing, as this will damage the belt and cause early failure.
5. Make sure pulleys stay in proper alignment. Misaligned pulleys can result in belt rolling in the pulley groove causing belt damage or breakage.

HANDLE CONTROLS

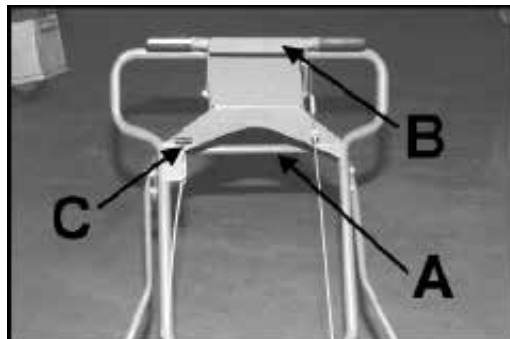
Transport Lift Handle A - Pushing down on the handle lowers the tines for aerating. Pulling the handle up raises the tines so the aerator can be moved or transported without incurring damage to the unit or the turf.

Clutch Control Handle (Bail) B - Engages the belt tightener clutch. Pulling back on the handle engages the clutch; releasing the handle disengages the clutch.

⚠ WARNING

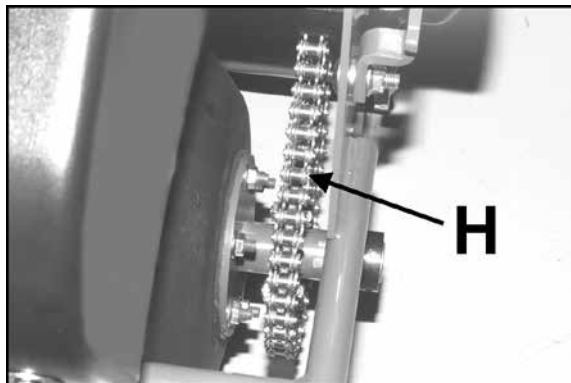
Releasing the clutch on an incline will cause freewheeling, which will allow the unit to roll down the incline.

Throttle Control C - The throttle control, located on the handle, adjusts the engine speed. Pushing the control forward increases the speed; pulling the control back reduces the speed.



FINAL PREPARATIONS

1. Check the engine oil level. Top off if necessary. See engine manual for oil requirements.
2. Lubricate the roller chain **H** with Lubriplate #13563 or equivalent.
3. Fill the gas tank with fresh, clean gasoline.



ENGINE CONTROLS

The Lawnaire IV & V are available with either a 6.5 HP Briggs & Stratton engine or a 4 HP Honda engine.

B&S Engine Controls

NOTE: B & S Engines A and B are combined.

FUEL SHUT OFF (A)

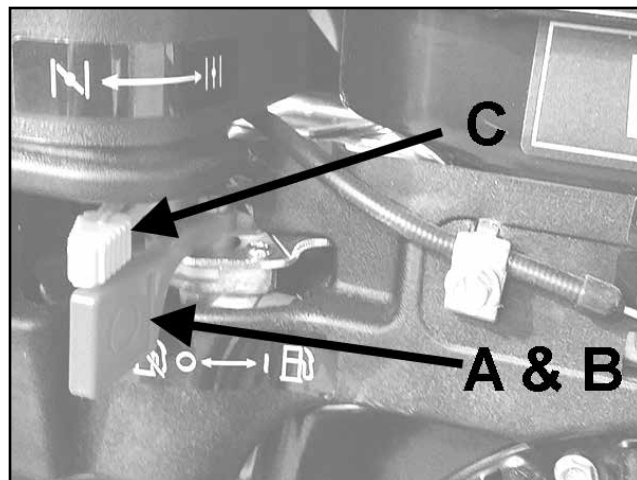
Move to the "OFF" position to shut off the fuel whenever transporting the machine by trailer, truck or during storage. Move to the "ON" position before starting the engine.

SWITCH (B)

Move to the "OFF" position to stop the engine.
Move to the "ON" position before starting engine.

CHOKE (C)

Move to the "CHOKE" position to apply the choke.
Move to the "RUN" position to remove the choke.



Honda Engine Controls

FUEL SHUT OFF (B)

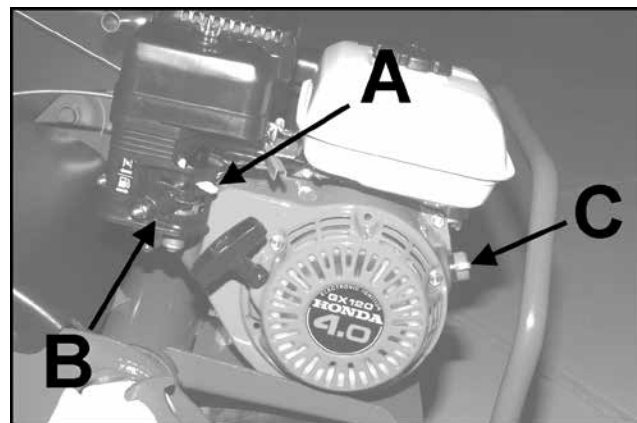
Move to the "OFF" position to shut off the fuel whenever transporting the machine by trailer, truck or during storage. Move to the "ON" position before starting the engine.

SWITCH (C)

Move to the "OFF" position to stop the engine.
Move to the "ON" position before starting engine.

CHOKE (A)

Move to the "CHOKE" position to apply the choke.
Move to the "RUN" position to remove the choke.



PRE-OPERATION CHECK

1. Visually check all moving parts and all fasteners. If loose or broken, tighten or replace. Check for broken or bent tines; replace if necessary
2. Check the engine crankcase and gear reduction case oil levels with the engine resting in a level position. Add oil if necessary.
3. Follow the engine manufacturer's recommendations for the correct type and amount of oil. Fill the fuel tank according to the engine manufacturer's specifications.

WARNING

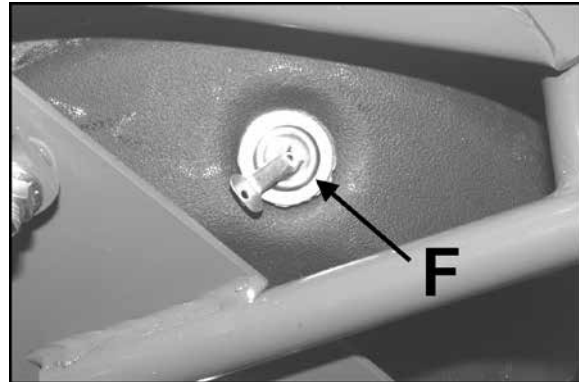
Gasoline is extremely flammable and highly explosive under certain conditions. Always stop the engine and do not smoke or allow open flames or sparks when refueling. BE SURE to install fuel cap after refueling.

- NEVER start or run the engine inside where exhaust fumes can collect. Carbon monoxide present in the exhaust is an odorless and deadly gas.
- DO NOT operate equipment without shields in place. DO NOT make adjustments or perform any maintenance while the engine is running.
- Before operating, check the area and remove any object which may present a safety hazard or damage the equipment.
- This unit is not designed to be used on steep slopes. To prevent injury and/or damage to equipment, use extreme caution when operating near terraces or hilly terrain. Travel up and down slopes at a 45 degree angle rather than across, to prevent unit from tipping over, DO NOT release clutch handle on a slope; this will cause freewheeling, allowing the unit to roll down the slope.

AERATING

NOTE: For best performance and maximum tine penetration, the lawn should be thoroughly watered the day before aeration.

1. Rotate the water drum on the front of the unit until the filler plug **F** is positioned at the top. Remove the plug, fill the drum with water and replace the plug.
2. Move the engine On/Off switch to the "ON" position and then pull the recoil starter and choke as required to start the engine.
3. Lift the transport lift handle if necessary to make sure the tines are not touching the ground, advance the throttle, slowly pull back on the clutch handle control and transport the aerator to the work area.



NOTE: Never cross hard objects or surfaces (such as sidewalks, driveways, stepping stones, etc.) with tines in the down position.

4. Upon reaching the work area, release the clutch control handle and adjust the throttle speed for aerating.
5. Push down on the transport lift handle, lowering the aerating tines to the turf.
6. Pull back slowly on the clutch control handle to start aerating.

NOTE: For maximum tine penetration into turf, apply downward pressure on the handle, until drum is off the ground.

7. At the end of each aerating pass, release the clutch control handle, lift up on the handle assembly and pivot the unit on the water drum. Resume aerating.
8. When finished aerating, lift up on the transport lift handle to move the unit into transport position.
9. Drain the water drum when finished with aerating.

SERVICE

⚠ WARNING

When replacement parts are required, use genuine Schiller Grounds Care, Inc. parts or parts with equivalent characteristics, including type, strength and material. Failure to do so may result in product malfunction and possible injury to the operator and/or bystanders.

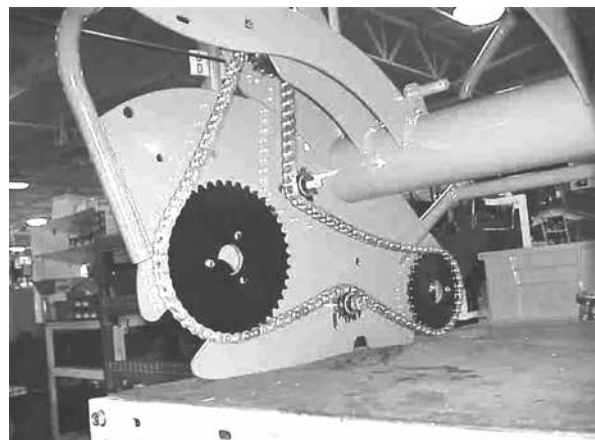
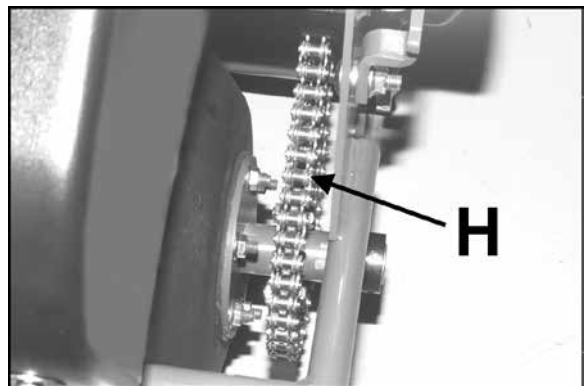
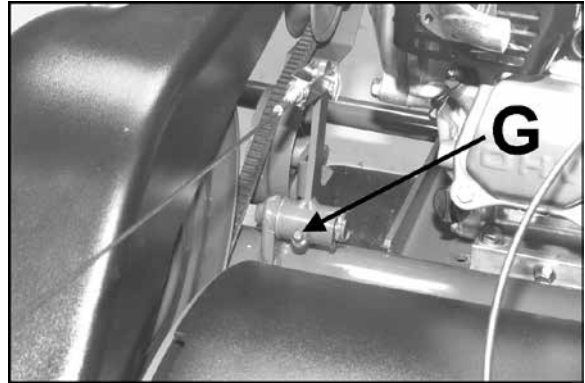
Any warning decal that becomes illegible should be replaced immediately.

Do not operate equipment without shields in place.

Do not make any adjustments or perform any maintenance while the engine is running.

1. Thoroughly clean all tines inside and out when aerating is completed and apply a light coat of oil to prevent rust on tines.
2. Check the engine and gear reduction case oil levels with the engine resting in a level position.
3. Inspect the air filter element and replace it if necessary.
4. Lubricate the clutch pivot **G** prior to each aerating season or as needed.
5. Keep the drive belt free of oil and dirt and replace if worn or damaged.
6. Keep the roller chain clean and in proper running order. Lubricate using Lubriplate #13563; available as Part No. 523248.
7. Check the roller chain for tightness and wear. Adjust idler sprockets if necessary by loosening the nut and screw holding the idler sprocket to the frame and then sliding the sprocket in the slot to the desired position. Tighten hardware.

NOTE: Excessive roller chain tightness will shorten the life of the bearings. The chain **H** should have movement of 1/8, to 1/4, (3mm to 6mm) deflection at the center point between the upper idler and drum sprockets.



Roller Chain Routing

STORAGE INSTRUCTIONS

WARNING

To prevent possible explosion or ignition of vaporized fuel, do not store equipment with fuel in tank or carburetor in enclosure with open flame (for example, a furnace or water heater pilot light).

Before the equipment is put in to storage for any period exceeding 30 days, the following steps should be taken.

1. Drain all fuel from the fuel tank and fuel lines.
2. Start the engine and run until all the fuel is used from the carburetor float bowl.
3. While the engine is still warm, drain the crankcase oil and replace with the proper weight oil corresponding to the season the equipment will next be used.
4. Remove the spark plug and squirt a small amount of engine oil into the cylinder. Turn the engine over a few times to distribute the oil.
5. Drain the water drum.

NOTE: Always drain the water drum for winter storage. Freezing water can rupture the drum.

6. Lubricate the clutch pivot fitting.

To put the equipment into service after an extended period of storage:

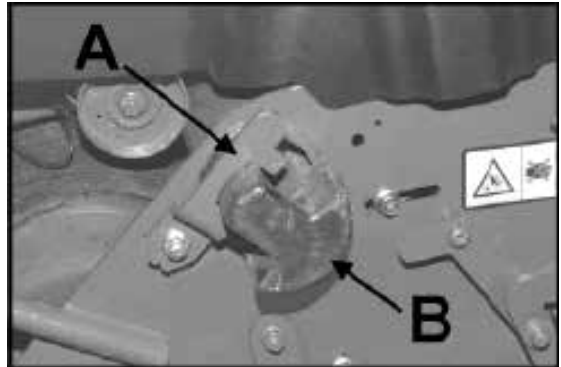
1. Check for loose parts and tighten if necessary.
2. Check for cracked or broken tines and replace as necessary.
3. Fill the fuel tank.
4. Check the engine and gear reduction case oil levels with the engine in a level position.
5. Start the engine.
6. Check for fuel leaks.
7. Check clutch control operation to make sure the unit stops when the clutch control is released.

TRANSPORTING

If a tote trailer will be used to transport the unit, the two cast weights must be removed from the aerator frame and a locking shaft installed in their place.

Removing the cast weights and draining the water drum will decrease the weight for easier loading on a vehicle or trailer.

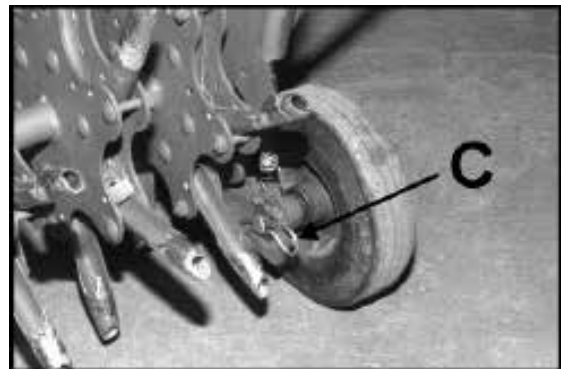
To remove the weights, pull up on the latch **A** securing the weights **B** and slide the weights out.



CAUTION

Use caution when removing the cast weights. Each weight is approximately 22 lbs.

NOTE: Be sure to close the fuel shut off valve before transporting the unit.



REMOVABLE TRANSPORT WHEELS

The rear wheels of the Lawnaire V are removable for transporting the aerator through fence gates.

With the wheels removed the Lawnaire V will pass through a 32 inch opening.

With the engine off, lower the aerator so that the tines are on the ground and the wheels are off the ground. Remove hair pins **C** from the axles. Slide wheels and axles out of transport frame.

Lift up on the aerator handle so the tines are off the ground. With the tines off the ground, push the aerator through the gate on the front drum. Once on the other side of the gate, reinstall the wheels.

SPECIFICATIONS

Lawnaire IV & V

LAWNNAIRE IV

Dimensions:

Width.....	28" (711 mm)
Length.....	51" (1295 mm)
Length (handle folded).....	46" (1168 mm)
Height (transport).....	47.5" (1206 mm)
Height (handle folded).....	30" (762 mm)

Net Weight:

Dry, w/o acc. weight.....	200 lbs. (91 Kg)
Dry, w/ acc. weight.....	240 lbs. (109 Kg)
With water tank full and acc. weight.....	280 lbs. (127 Kg)

Speed:

Transport.....	up to 320 f.p.m. (97.5 M.p.m.)
Aerate.....	up to 305 f.p.m. (93 M.p.m.)

Engines:

Model 544908A

Model.....	GX120UT2HT2 Honda, 4.0 h.p., 4 cycle
Starter.....	Recoil, on/off switch
Governor.....	3175 ± 125 RPM, no load
Idle Speed.....	1400 + 100 RPM
Fuel Tank.....	.66 gal. (2.5 L)
Gear Reduction.....	6 to 1

Model 544909C

Model.....	#13L3520138F8 Briggs & Stratton 6.5 h.p., 4 cycle
Starter.....	Recoil, on/off switch
Governor.....	3200 RPM +/- 100 RPM, no load
Idle Speed.....	1750 RPM
Fuel Tank.....	3.5 qt. (3.3 L)
Gear Reduction.....	6 to 1

Drive:

Primary.....	V Belt, 4L section
Secondary.....	#40 plated roller chain

Wheels:

Front.....	11" (279 mm) Dia. water tank 5.2 gal. (19.7 L) max. capacity
Rear.....	8 x 2.50 semi-pneumatic tires with 3/4" ball bearings

Aeration:

Tines....	3/4" (19 mm) formed from .08" hardened chrome molybdenum alloy steel, 30 per unit
Penetration Depth.....	2 3/4" (70 mm) max.
Swath Width.....	19" (483 mm)
Hole Pattern.....	3 3/4" x 7" (95 x 178 mm) on center
Production.....	Up to 28,975 sq. ft. / hour

LAWNNAIRE V

Dimensions:

Width.....	35.5" (902 mm)
Length.....	52.5" (1334 mm)
Length (handle folded).....	46" (1168 mm)
Height (transport).....	47.5" (1206 mm)
Height (handle folded).....	30" (762 mm)

Net Weight:

Dry, w/o acc. weight.....	228 lbs. (103 Kg)
Dry, w/ acc. weight.....	266 lbs. (122 Kg)
With water tank full and acc. weight.....	330 lbs. (1497 Kg)

Speed:

Transport.....	up to 320 f.p.m. (97.5 M.p.m.)
Aerate.....	up to 305 f.p.m. (93 M.p.m.)

Engines:

Model 544910A

Model.....	GX120UT2HT2 Honda, 4.0 h.p., 4 cycle
Starter.....	Recoil, on/off switch
Governor.....	3175 ± 125 RPM, no load
Idle Speed.....	1400 + 100 RPM
Fuel Tank.....	.66 gal. (2.5 L)
Gear Reduction.....	6 to 1

Model 544911C

Model.....	#13L3520138F8 Briggs & Stratton 6.5 h.p., 4 cycle
Starter.....	Recoil, on/off switch
Governor.....	3200 RPM +/- 100 RPM, no load
Idle Speed.....	1750 RPM
Fuel Tank.....	3.5 qt. (3.3 L)
Gear Reduction.....	6 to 1

Drive:

Primary.....	V Belt, 4L section
Secondary.....	#40 plated roller chain

Wheels:

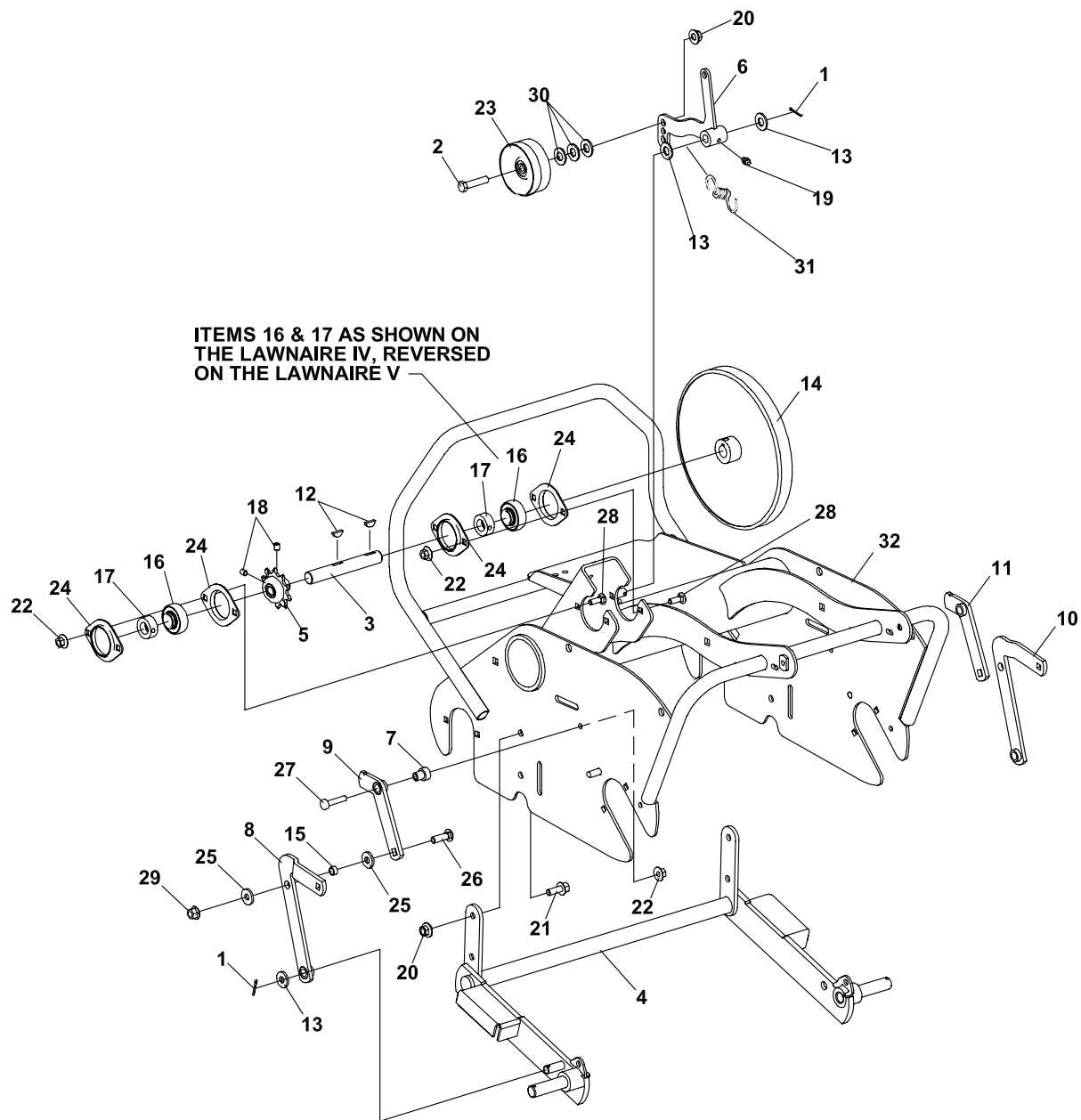
Front.....	11" (279 mm) Dia. water tank 7.9 gal. (29.9 L) max. capacity
Rear.....	8 x 2.50 semi-pneumatic tires with 3/4" ball bearings

Aeration:

Tines....	3/4" (19 mm) formed from .08" hardened chrome molybdenum alloy steel, 42 per unit
Penetration Depth.....	2 3/4" (70 mm) max.
Swath Width.....	26 1/2" (673 mm)
Hole Pattern.....	3 3/4" x 7" (95 x 178 mm) on center
Production.....	Up to 40,400 sq. ft. / hour

PARTS SECTION

FIGURE 1



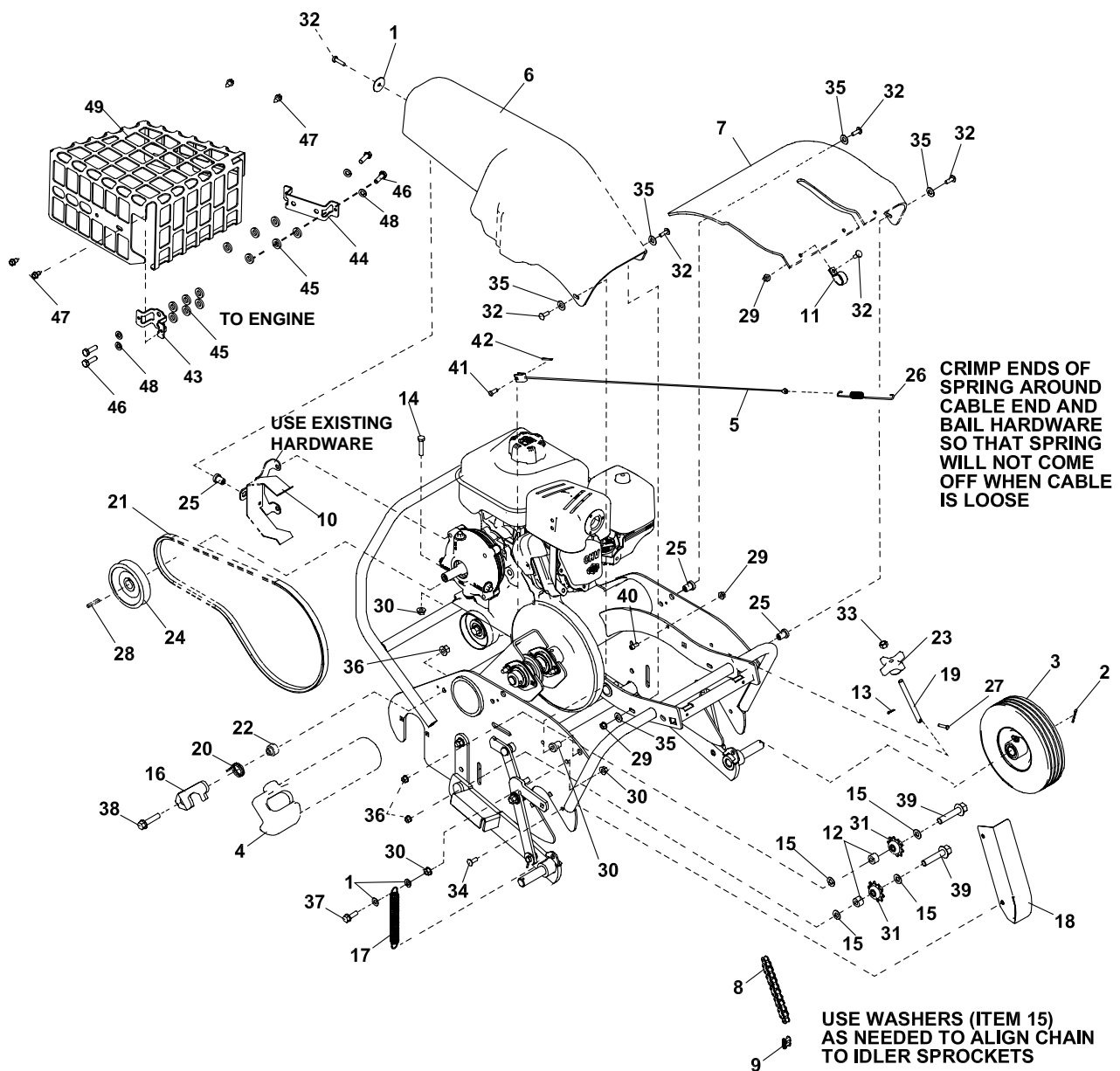
Lawnaire IV & V

FRAME GROUP

FIGURE 1

ITEM	PART NO.	DESCRIPTION	QTY	ITEM	PART NO.	DESCRIPTION	QTY
1	64140-9	COTTER PIN, 12 x 1.12 YS	3				
2	64262-018	BLT-FLG HD 3/8-16X1-3/4	1				
3	4170672	SHAFT, JACK LAIV (USED ON LAIV MODELS)	1				
	4170671	SHAFT, LAV JACK (USED ON LAV MODELS)	1				
4	2702877.7	FRAME, TRANSPORT LAIV (USED ON LAIV MODELS)	1				
	2703019.7	FRAME, TRANSPORT LAV (USED ON LAV MODELS)	1				
5	841261	SPROCKET, 16T, 1/2P	1				
6	2703341.7	BELLCRANK AY, IDLER	1				
7	2703519	BUSHING, SH .33X.75X.88	2				
8	2703756.7	LINK AY, LOWER LEFT	1				
9	2703757.7	LINK AY, UPPER LEFT	1				
10	2703758.7	LINK AY, LOWER RIGHT	1				
11	2703759.7	LINK AY, UPPER RIGHT	1				
12	64164-02	KEY3/16 X 1 SQUARE	2				
13	64163-67	WASHER-.516X1X12GA	4				
14	521609	PULLEY, DRIVEN 10"	1				
15	518438	BUSHING	2				
16	521856	BEARING,BALL	2				
17	521857	COLLAR,BRG LOCKING	2				
18	64044-18	SCREW-SET 5/16-18 x 5/16	2				
19	85010N	ZERK, 1/4-28	1				
20	64141-4	NUT-WLF 3/8-16	5				
21	64139-24	BLT-WLF 3/8-16 X 1	4				
22	64141-6	NUT, 5/16-18	6				
23	548942	PULLEY, PLAIN IDLER 3.25"	1				
24	548962	HOUSING,BEARING	4				
25	64163-31	WSHR, .38 1.00.12 YS FLAT	4				
26	64018-7	BOLT-CRG 3/8-16X1-1/4	2				
27	64218-07	SCRW,BTN 5/16-18X1-1/2	2				
28	64018-9	BLT-CRG 5/16-18X3/4	4				
29	64268-03	NUT-FL NYLN LOCK 3/8-16	2				
30	64163-61	WASHER (USED ON LA IV ONLY)	3				
	64163-31	WASHER (USED ON LAV ONLY)	3				
31	4137227	SPRING-TORSION	1				
32	4175950	FRAME AY, LAWNNAIRE IV (USED ON LAIV MODELS)	1				
	4175951	FRAME AY, LAWNNAIRE V (USED ON LAV MODELS)	1				

FIGURE 2



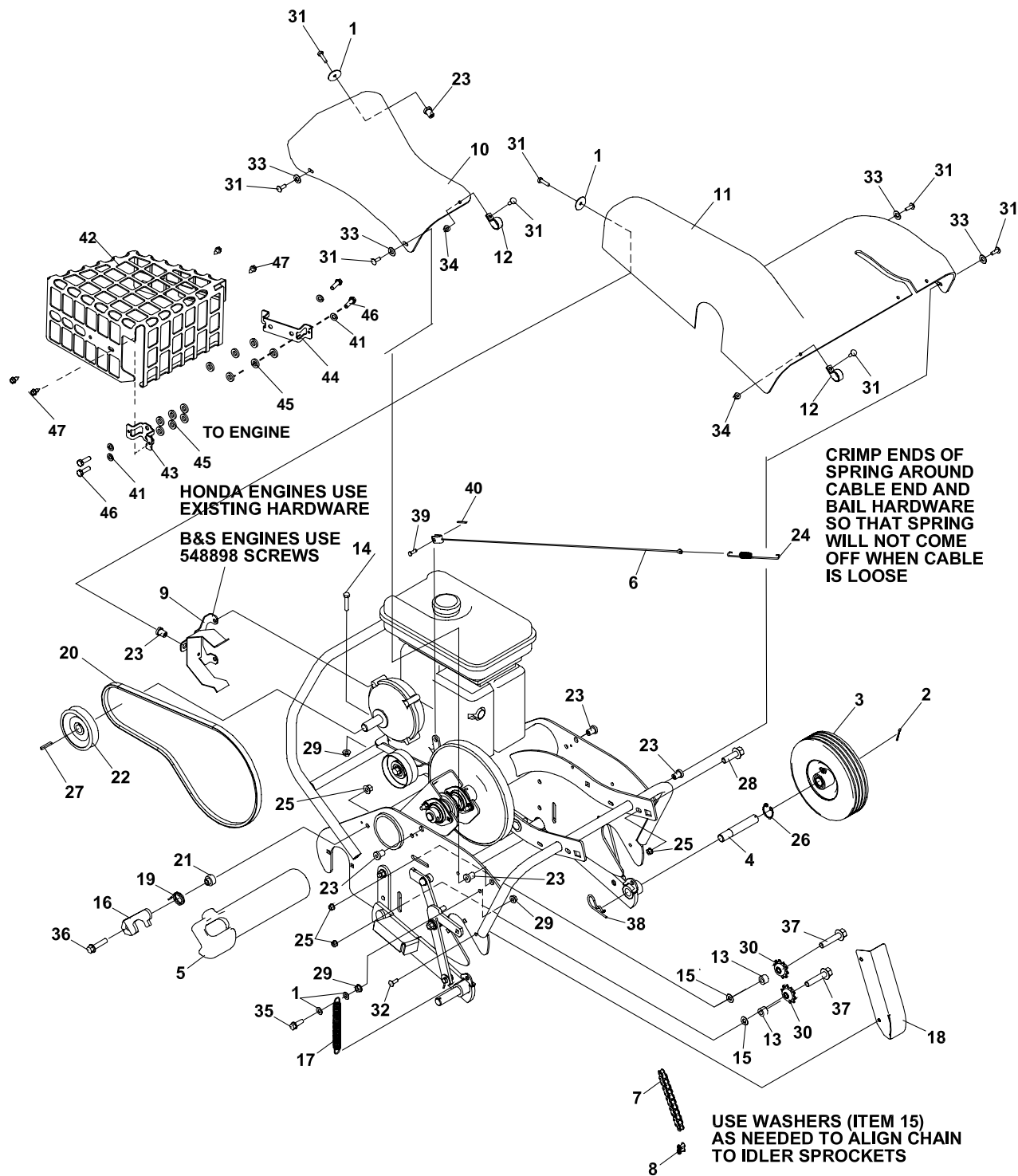
Lawnaire IV & V

MAIN GROUP LAWNAIRE IV

FIGURE 2

ITEM	PART NO.	DESCRIPTION	QTY	ITEM	PART NO.	DESCRIPTION	QTY
1	64163-29	WASHER-21/64 X 1 X 11GA	5				
2	64140-9	COTTER PIN-1/8X1-1/4	3				
3	4124192	WHEEL, 8X2.5 SEMI-PNEUM	2				
4	2703148	WEIGHT, LAWNAIRE	2				
5	4117195	CABLE, CLUTCH	1				
6	2703444	COVER, DRIVE LA4	1				
7	2703445	COVER, TINE LA4	1				
8	2703611	CHAIN, #40 124P W/CONN	1				
9	4113841	LINK, #40 CHAIN NICKEL	1				
10	2703616.7	BRACKET AY, COVER	1				
11	48228-1A	CLIP-CABLE INSULATED	3				
12	822474	SPACER	2				
13	64140-16	COTTER PIN-5/64X3/4	2				
14	64139-23	BLT-WLF 3/8-16 X 1-3/4	4				
15	64163-61	WSHR .81X.406X16GA	A/R				
16	4109880.7	LATCH, WEIGHT	2				
17	4113746	SPRING, EXT .687 X 6.0	2				
18	4113972.7	COVER, CHAIN LAWNAIRE	1				
19	4114101	ROD, ADJUSTMENT	2				
20	4114111	SPRING, TORSION 1.19	2				
21	4114319	BELT, 4L-480 KEVLAR	1				
22	4114608	BUSHING, SH .390 ID X .71	2				
23	4115632	KNOB, 2.5" .38-24	2				
24	517137	PULLEY,4 IN "A"	1				
25	522516	MOUNT, ISOLATION (KC)	4				
26	4118356	SPRING, EXTENSION	1				
27	64188-66	PIN,CLVIS.19DIA X 1.0LG	2				
28	64164-11	KEY-3/16X3/16X1-1/4 SQ	1				
29	64229-01	LOCKNUT-NYLON 1/4-20	6				
30	64141-6	NUT, 5/16-18	8				
31	548960	SPROCKET,IDLER	2				
32	64123-114	BOLT-HEX 1/4-20X1	8				
33	64151-3	NUT,.38-24 HX CRWNLOCK	2				
34	64218-04	SCREW, 1/4 -20 X 3/4	2				
35	64163-03	WSHR-.256IDX.62ODX18GA	5				
36	64268-03	NUT-FL NYLON LOCK 3/8-16	4				
37	64123-47	BLT-HEX 5/16-18X1-1/4	2				
38	64262-018	BLT-FLG HD 3/8-16 X 1-3/4	2				
39	64262-014	BLT-FLG HD 3/8-16 X 2	2				
40	64189-20	SCRW,.25-20.50	2				
41	64188-65	PIN CLEVIS 1/4X.62	1				
42	64140-3	COTTER PIN-3/32X3/4	1				
ITEMS 43-49 USED ON B&S ENGINES ONLY							
43	4160484.7	BRKT-VERTICAL	1				
44	4160485.7	BRKT-HORIZONTAL	1				
45	64163-02	WSHR .328X.608X11	12				
46	64205-038	BLT-METRIC M6-1.00X20	4				
47	64152-56	SCREW-HS STAP #12X1/2	4				
48	64006-01	LOCKWSHR-1/4 HELICAL	4				
49	4164186.7	GUARD, MUFFLER (B&S)	1				

FIGURE 3



Lawnaire IV & V

MAIN GROUP-LAWNNAIRE V

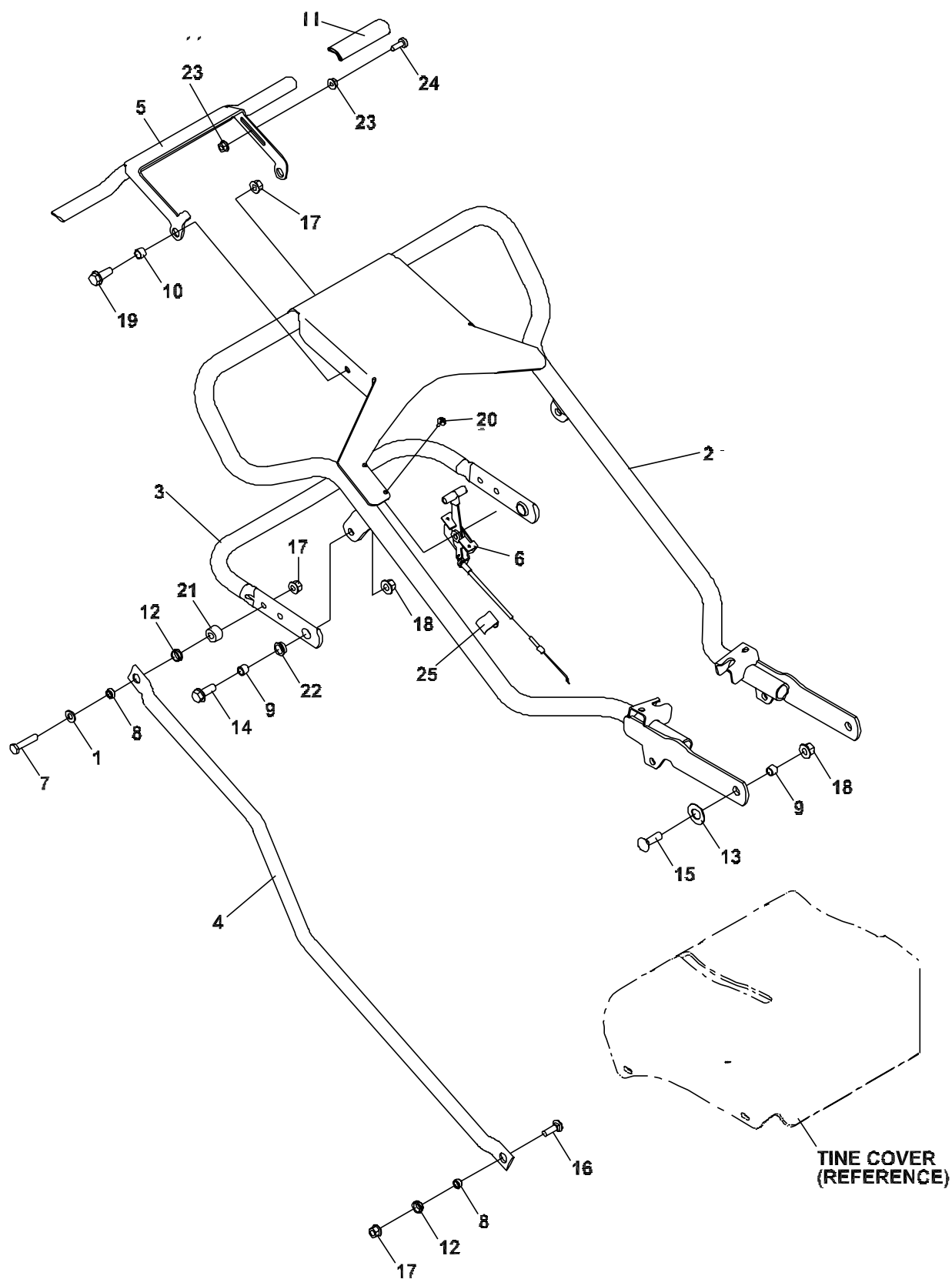
FIGURE 3

ITEM	PART NO.	DESCRIPTION	QTY	ITEM	PART NO.	DESCRIPTION	QTY
1	64163-29	WASHER-21/64 X 1 X 11GA	6				
2	64140-9	COTTER PIN, 12 x 1.12	2				
3	4124192	WHEEL, 8X2.5 SEMI-PNEUM	2				
4	2703026	AXLE, TRANSPORT WHEEL	2				
5	2703148	WEIGHT, LAWNNAIRE	2				
6	4117195	CABLE, CLUTCH	1				
7	2703611	CHAIN, #40 124P W/CONN	1				
8	4113841	LINK, #40 CHAIN NICKEL	1				
9	2703616.7	BRACKET AY, COVER	1				
10	2703660	COVER, SPROCKET LA5	1				
11	2703661	COVER, DRIVE AND TINE	1				
12	48228-1A	CLIP-CABLE INSULATED	4				
13	822474	SPACER	2				
14	64139-23	BLT-WLF 5/16-18 X 1-3/4	4				
15	64163-61	WSHR .81X.406X16GA	A/R				
16	4109880.7	LATCH, WEIGHT	2				
17	4113746	SPRING, EXT .687 X 6.0	2				
18	4113972.7	COVER, CHAIN LAWNNAIRE	1				
19	4114111	SPRING, TORSION 1.19	2				
20	4114319	BELT, 4L-480 KEVLAR	1				
21	4114608	BUSHING, SH .390 ID X .71	2				
22	517137	PULLEY,4 IN "A"	1				
23	522516	MOUNT, ISOLATION (KC)	6				
24	4118356	SPRING, EXTENSION	1				
25	64268-03	NUT-FL NYLN LOCK 3/8-16	6				
26	64144-02	SNAP RING 3/4	2				
27	64164-11	KEY-3/16X3/16X1-1/4 SQ	1				
28	64262-011	BOLT-FLG HD 3/8-16 X 1	2				
29	64141-6	NUT, 5/16-18	8				
30	548960	SPROCKET,IDLER	2				
31	64123-114	BOLT-HEX 1/4-20X1	10				
32	64218-04	SCRW-BTN HD 1/4-20X3/4	2				
33	64163-03	WSHR-.256IDX.62ODX18GA	4				
34	64229-01	LOCKNUT-NYLON 1/4-20	4				
35	64123-47	BLT-HEX 5/16-18X1-1/4	2				
36	64262-018	BLT-FLG HD 3/8-16 X 1-3/4	2				
37	64262-014	BLT-FLG HD 3/8-16 X 2	2				
38	64168-4	COTTER-HAIRPIN	1				
39	64188-65	PIN CLEVIS 1/4X.62	1				
40	64140-3	COTTER PIN-3/32X3/4	1				
ITEMS 41-47 USED ON B&S ENGINES ONLY							
41	64006-01	LOCKWSHR-1/4 HELICAL	4				
42	4164186.7	GUARD, MUFFLER (B&S)	1				
43	4160484.7	BRKT-VERTICAL	1				
44	4160485.7	BRKT-HORIZONTAL	1				
45	64163-02	WSHR .328X.608X11	12				
46	64205-038	BLT-METRIC M6-1.00X20	4				
47	64152-56	SCREW-HS STAP #12X1/2	4				

HANDLE GROUP

Lawnaire
IV & V

FIGURE 4



Lawnaire IV & V

HANDLE GROUP

FIGURE 4

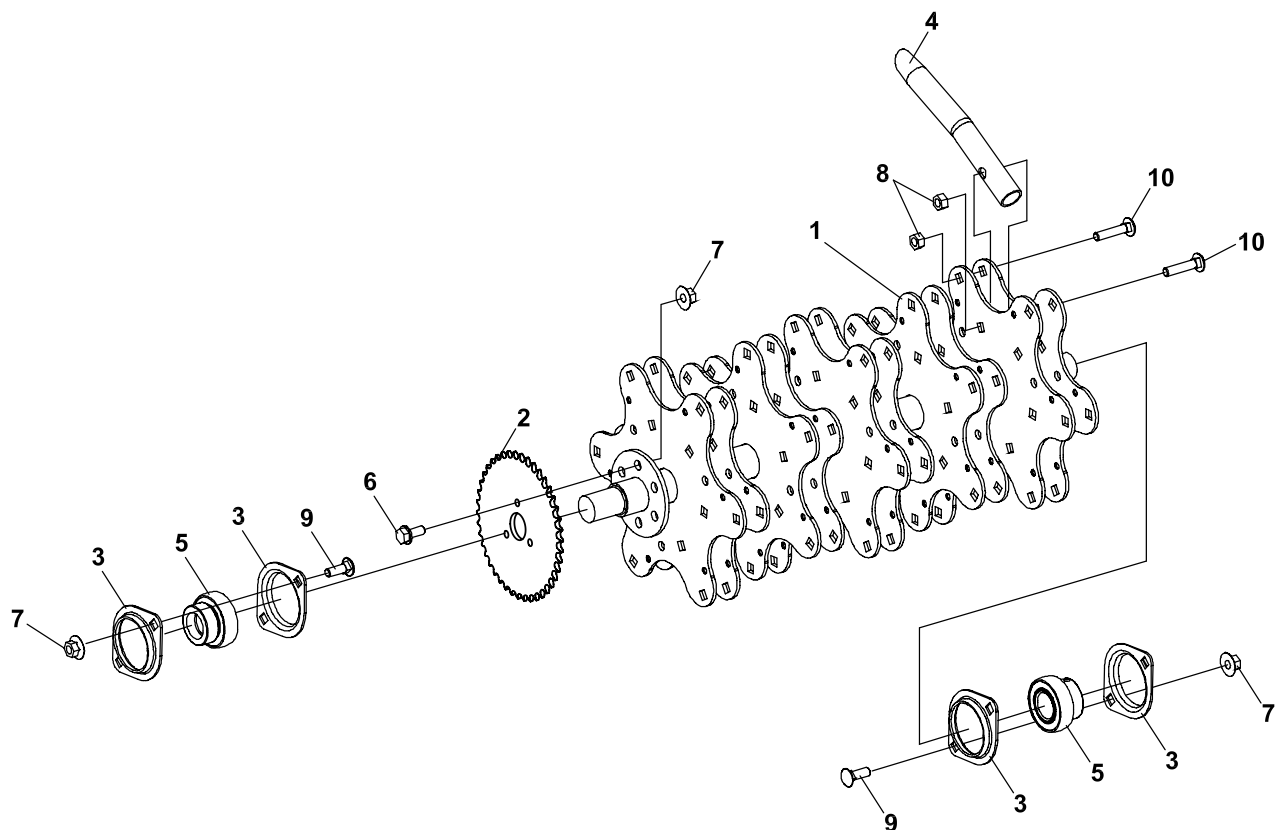
ITEM	PART NO.	DESCRIPTION	QTY	ITEM	PART NO.	DESCRIPTION	QTY
1	64163-95	WSHR, .31.69.06 YS FLT	2				
2	4175952	S-LA4 HANDLE W/DECALS (USED ON 544908A & 544910A)	1				
	4138395	S-LA5 HANDLE W/DECALS (USED ON 544909C & 544911C)	1				
3	2703059.7	HANDLE, HGHT ADJ. LA IV (USED ON 544908A & 544910A)	1				
	2703060.7	HANDLE, HEIGHT ADJ. LA V (USED ON 544909C & 544911C)	1				
4	4175919.7	TUBE, CONTROL LA IV & V	2				
5	4164738.7	BAIL AY, LA IV & V	1				
6	2703185	CNTRL AY, THROTTLE 43 (USED ON 544908A & 544910A)	1				
	4163186	CONTROL-THROTTLE (USED ON 544909C & 544911C)	1				
7	64123-69	BOLT-5/16-18X1-1/2 HEX	2				
8	517226	BRG,SLV .33 .50 .20	4				
9	518438	BUSHING.39IDX.50ODX.35	4				
10	521679	BUSHING	2				
11	523139	GRIP,HANDLE	2				
12	4116398	BUSHING .50IDX.13 THK	4				
13	64163-93	WASHER	2				
14	64139-24	BLT-WLF 3/8-16 X 1	2				
15	64018-7	BOLT-CRG 3/8-16X1-1/4	2				
16	64018-9	BLT-CRG 5/16-18X3/4 G5	2				
17	64268-02	NUT-FL NYLN LCK 5/16-18	6				
18	64268-03	NUT-FL NYLN LCK 3/8-16	4				
19	64262-007	BLT-FLG HD 5/16-18 X 1	2				
20	64152-18	TSCRW,#8-18.50 SLF-DRL	2				
21	822474	SPACER	2				
22	830165	BUSHING	2				
23	64141-2	NUT-WLF 1/4-20	2				
24	64218-04	SCREW, 1/4 -20 X 3/4	1				
25	78007N	THROTTLE CABLE CLIP (USED ON LAV MODELS)	1				
ITEMS 26-28 USED ON BRIGGS MODELS							
26*	64025-15	NUT-10-24	2				
27*	22372	B&S CABLE CLAMP	1				
28*	64197-023	BLT-TDFM 10-32X3/4	1				

* NOT ILLUSTRATED

TINE WHEEL GROUP

Lawnaire
IV & V

FIGURE 5



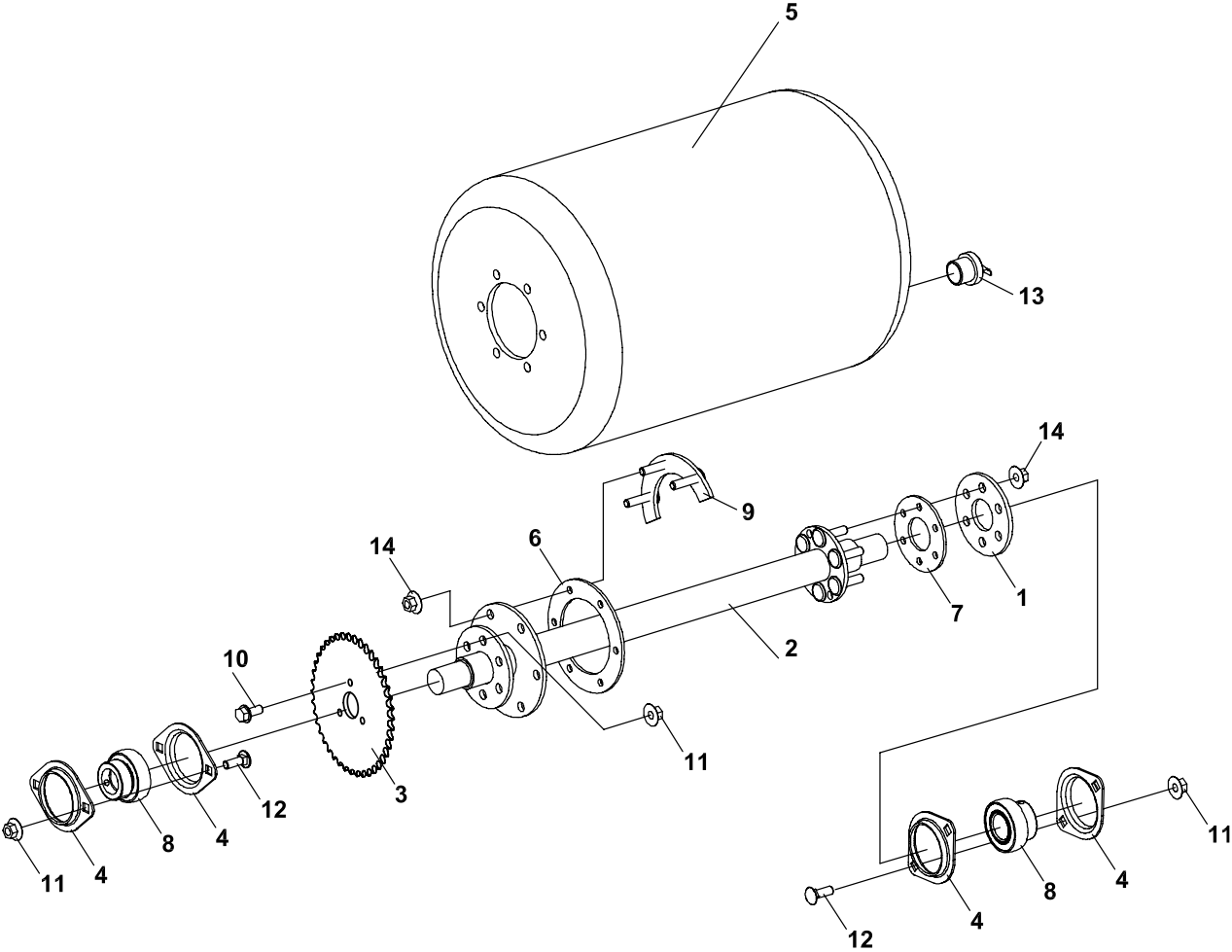
Lawnaire IV & V

TINE WHEEL GROUP

FIGURE 5

ITEM	PART NO.	DESCRIPTION	QTY	ITEM	PART NO.	DESCRIPTION	QTY
1	2702742.7	TINE WHEEL AY, LAIV (USED ON LAIV ONLY)	1				
	2703004.7	TINE WHEEL AY, LA5 (USED ON LAV ONLY)	1				
2	2703160	SPROCKET, 42T.50P	1				
3	2703508	FLANGE, BEARING 2.04 I.D.	4				
4	522361	TINE, CORING 3/4 (QTY 30 USED ON LAIV) (QTY 42 USED ON LAV)					
5	545786	BEARING ASSEMBLY	2				
6	64139-08	BOLT-5/16-18X3/4 WLF	3				
7	64141-6	NUT, 5/16-18	7				
8	64151-15	5/16-18 HEX NUT CNTRLCK (QTY 60 USED ON LAIV) (QTY 84 USED ON LAV)					
9	64018-9	BLT-CRG 5/16-18X3/4 G5	4				
10	64018-34	BLT-CRG 5/16-18 X 1-1/2 (QTY 60 USED ON LAIV) (QTY 84 USED ON LAV)					

FIGURE 6



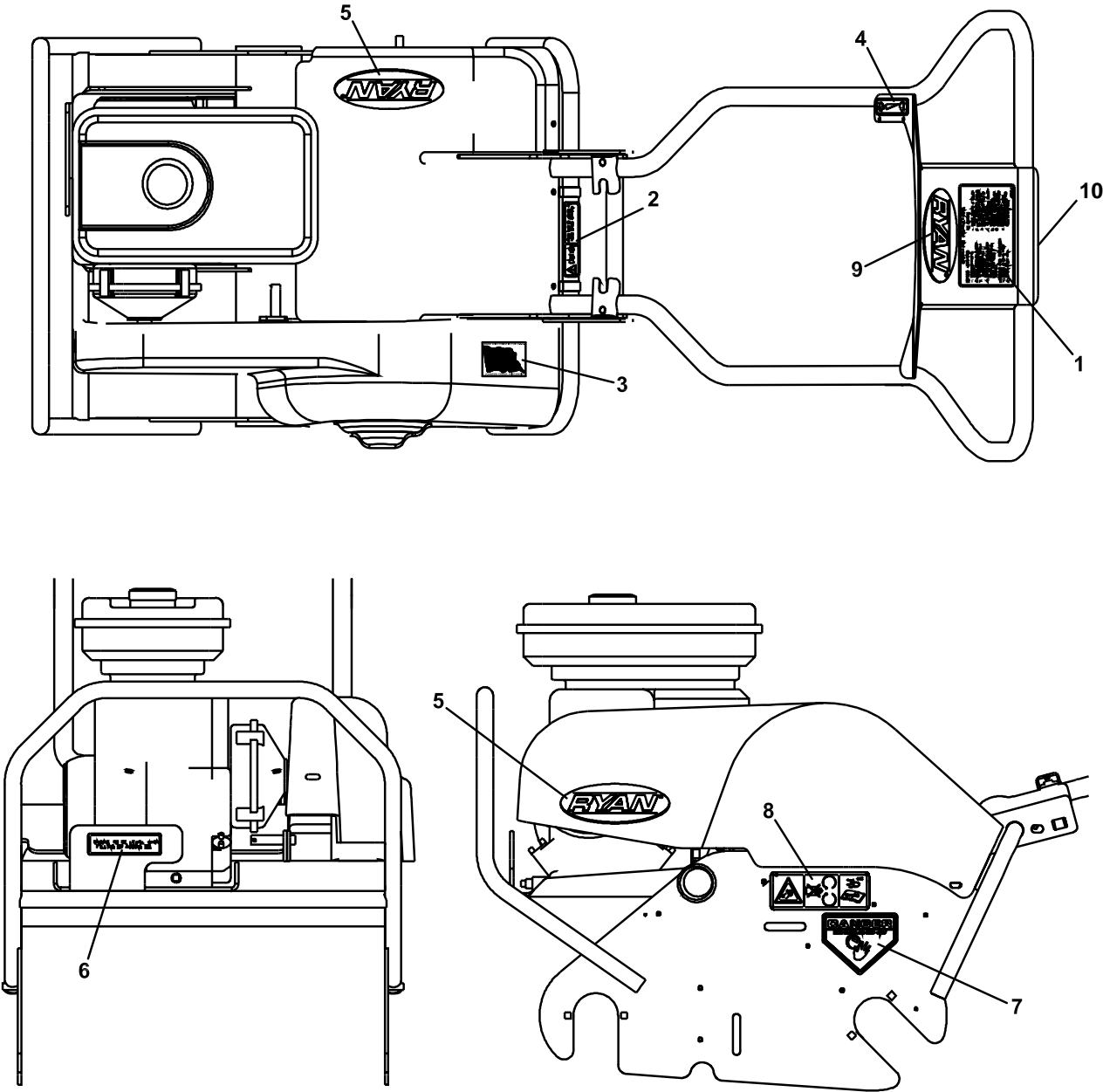
Lawnaire IV & V

DRUM GROUP

FIGURE 6

ITEM	PART NO.	DESCRIPTION	QTY	ITEM	PART NO.	DESCRIPTION	QTY
1	2702741.7	PLATE, FLANGE	1				
2	2703102.7	DRIVE AY, LAIV DRUM (USED ON LAWNNAIRE IV ONLY)	1				
	2703108.7	DRIVE AY, LAV DRUM (USED ON LAWNNAIRE V ONLY)	1				
3	2703157	SPROCKET, 30T .50P	1				
4	2703508	FLANGE, BEARING 2.04 I.D.	4				
5	2703783	DRUM, WATER LAIV (USED ON LAWNNAIRE IV ONLY)	1				
	2703785	DRUM, WATER LAV (USED ON LAWNNAIRE V ONLY)	1				
6	522480	GASKET, 4.50 DIA.	1				
7	522481	GASKET, 3.00 DIA.	1				
8	545786	BEARING ASSEMBLY	2				
9	545887	RING AY, SPLIT	2				
10	64139-08	BOLT-5/16-18X3/4 WLF	3				
11	64141-6	NUT, 5/16-18	7				
12	64018-9	BLT-CRG 5/16-18X3/4 G5	4				
13	821274	PLUG, DRAIN	1				
14	64025-02	NUT-HEX 5/16-18	12				

FIGURE 7



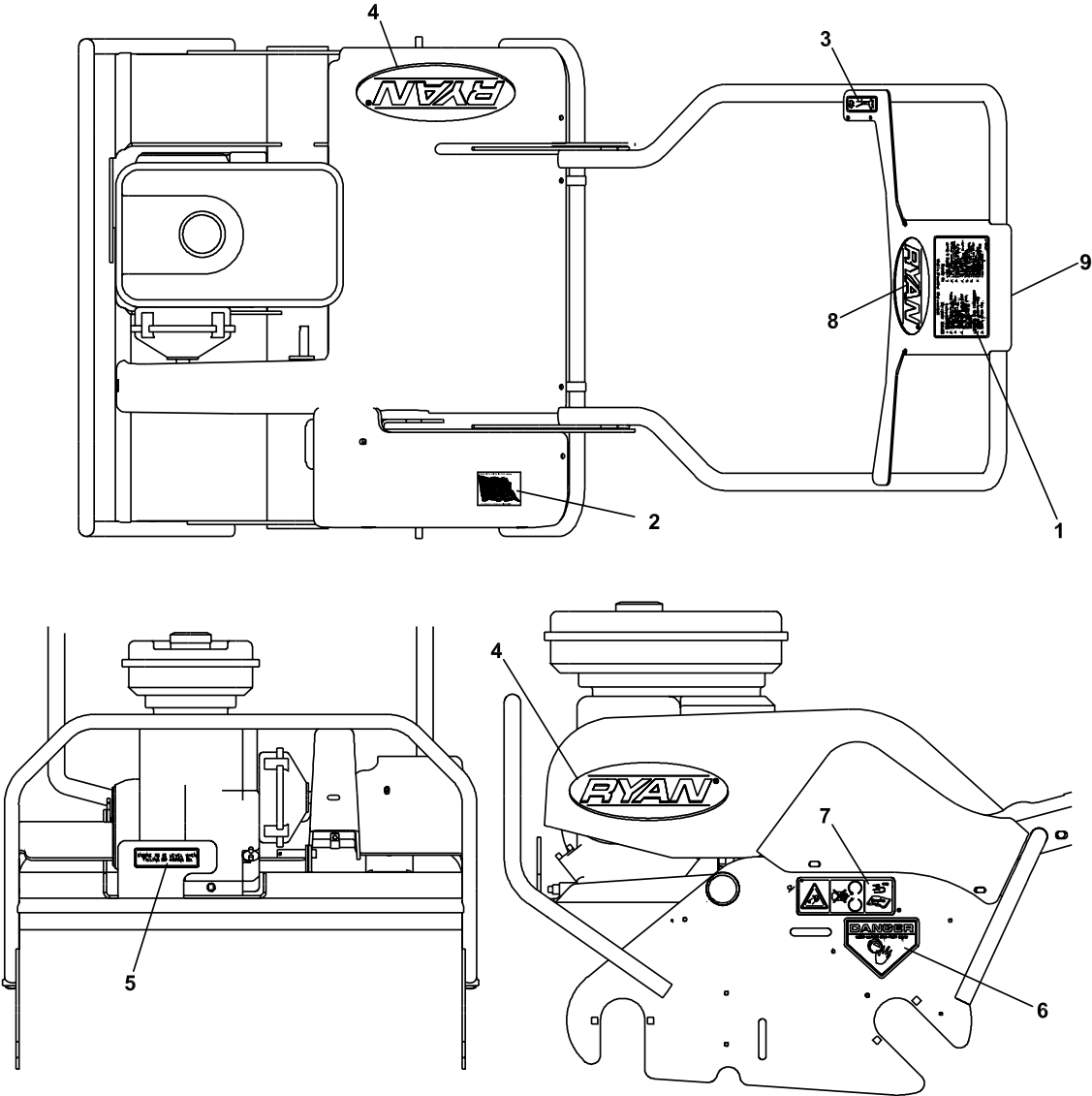
Lawnaire IV & V

DECAL GROUP-LAWNNAIRE IV

FIGURE 7

ITEM	PART NO.	DESCRIPTION	QTY	ITEM	PART NO.	DESCRIPTION	QTY
1	2703117	DECAL, OP INSTR LA IV & V	1				
2	4109022	DECAL, CAUT LOCK HNDLE	1				
3	4116761	LABEL-MADE IN USA	1				
4	4115768	DECAL, HAND THROTTLE	1				
5	4161123	LABEL-RYAN	2				
6	521787	DECAL,WARNING	1				
7	835892	DECAL,DANGER HNDS&FT	2				
8	840697	DECAL,WARNING BELT	1				
9	4161125	LABEL-RYAN	1				
10	4176057	DECAL-TEXT,LAIV	1				

FIGURE 8



Lawnaire IV & V

DECAL GROUP-LAWNNAIRE V

FIGURE 8

ITEM	PART NO.	DESCRIPTION	QTY	ITEM	PART NO.	DESCRIPTION	QTY
1	2703117	DECAL, OP INSTR LA IV & V	1				
2	4116761	LABEL-MADE IN USA	1				
3	4115768	DECAL, HAND THROTTLE	1				
4	4161123	LABEL-RYAN	2				
5	521787	DECAL,WARNING	1				
6	835892	DECAL,DANGER HNDS&FT	2				
7	840697	DECAL,WARNING BELT	1				
8	4161125	LABEL-RYAN	1				
9	4176058	DECAL-TEXT, LAV	1				

SCHILLER GROUNDS CARE, INC.
ONE BOB-CAT LANE
P.O. BOX 469
JOHNSON CREEK, WI 53038
920-699-2000
www.schillergc.com



©Schiller Grounds Care, Inc. 2010