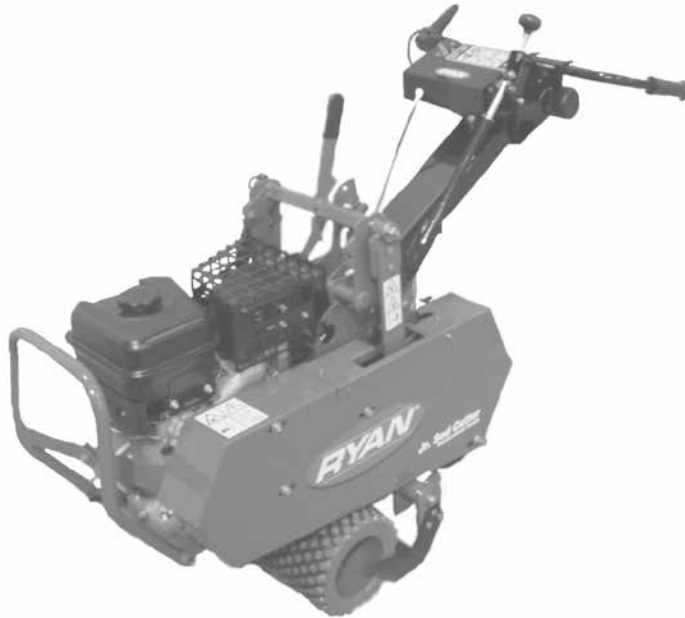




SELF PROPELLED WALK BEHIND SODCUTTER



744844H

JR SODCUTTER 6HP B&S 12"

(S/N 1700 and above)

744845H

JR SODCUTTER 6HP B&S 18"

(S/N 1900 and above)

744944C

JR SODCUTTER 5.5HP HONDA 12"

(S/N 1300 and above)

744945C

JR SODCUTTER 5.5HP HONDA 18"

(S/N 1300 and above)

MAN 4175988

Rev. A 04-2018

Original Language Instructions

OPERATOR'S MANUAL 4175989



SCHILLER

**GROUNDS
CARE**

PARTS MANUAL

CALIFORNIA PROPOSITION 65



WARNING: Cancer and Reproductive Harm - www.P65Warnings.ca.gov.



ADVERTENCIA: Cáncer y Daño Reproductivo - www.65Warnings.ca.gov.

WARNING

The engine exhaust from this product contains chemicals known to the State of California to cause cancer, birth defects or other reproductive harm.

ADVERTENCIA

El estado de California hace saber que los gases de escape de este producto contienen productos químicos que producen cáncer, defectos de nacimiento y otros daños en el proceso de reproducción humana.

IMPORTANT!

It is a violation of California Public Resource Code Section 4442 or 4443 to use or operate the engine on any forest-covered, brush-covered or grass-covered land unless the engine is equipped with a spark arrestor, as defined in Section 4442, maintained in effective working order or the engine is constructed, equipped, and maintained for the prevention of fire.

To acquire a spark arrestor for your unit, see your Engine Service Dealer.

Please refer to the engine manufacturer's information included with the machine.

Labeled power ratings are supplied by the engine manufacturer in accordance with SAE testing and gross/net power rating standards (J1940, J1995, J1349).

IMPORTANT MESSAGE

Thank you for purchasing this Schiller Grounds Care, Inc. product. You have purchased a world class product, one of the best designed and built anywhere.

This machine comes with aN Operation and Parts Manual. The useful life and good service you receive from this machine depends to a large extent on how well you read and understand this manual. Treat your machine properly, lubricate and adjust it as instructed, and it will give you many years of reliable service.

Your safe use of this Schiller Grounds Care, Inc. product is one of our prime design objectives. Many safety features are built in, but we also rely on your good sense and care to achieve accident-free operation. For best protection, study the manual thoroughly. Learn the proper operation of all controls. Observe all safety precautions. Follow all instructions and warnings completely. Do not remove or defeat any safety features. Make sure those who operate this machine are as well informed and careful in its use as you are.

See a Schiller Grounds Care, Inc. dealer for any service or parts needed. Schiller Grounds Care, Inc. service ensures that you continue to receive the best results possible from Schiller Grounds Care, Inc. products. You can trust Schiller Grounds Care, Inc. replacement parts because they are manufactured with the same high precision and quality as the original parts.

Schiller Grounds Care, Inc. designs and builds its equipment to serve many years in a safe and productive manner. For longest life, use this machine only as directed in the manual, keep it in good repair and follow safety warnings and instructions. You'll always be glad you did.

Schiller Grounds Care, Inc.
One Bob Cat Lane
Johnson Creek, WI 53038-0469

TABLE OF CONTENTS	PAGE
SAFETY	2,3
SET-UP	4
ADJUSTMENTS	5-7
MAINTENANCE/SERVICE	8-16
STORAGE	17
TROUBLESHOOTING	18
SPECIFICATIONS	19
PARTS SECTION	20
DRIVE ASSEMBLY AND SIDE COVER	FIGURE 1 20,21
MUFFLER GUARDS	FIGURE 2 22,23
GEAR CASE	FIGURE 3 24,25
SIDE ARMS, PITMAN ARMS, AND HANDLES	FIGURE 4 26,27
HANDLEBAR ASSEMBLY	FIGURE 5 28,29
MOLE BLADE KIT	FIGURE 6 30,31
TRENCHING KIT	FIGURE 7 32,33

NOTICE !!!

Unauthorized modifications may present **extreme** safety hazards to operators and bystanders and could also result in product damage.

Schiller Grounds Care, Inc. strongly warns against, rejects and disclaims any modifications, add-on accessories or product alterations that are not designed, developed, tested and approved by Schiller Grounds Care, Inc. Engineering Department. Any Schiller Grounds Care, Inc. product that is altered, modified or changed in any manner not specifically authorized after original manufacture—including the addition of “after-market” accessories or component parts not specifically approved by Schiller Grounds Care, Inc. will result in the Schiller Grounds Care, Inc. Warranty being voided.

Any and all liability for personal injury and/or property damage caused by any unauthorized modifications, add-on accessories or products not approved by Schiller Grounds Care, Inc. will be considered the responsibility of the individual(s) or company designing and/or making such changes. Schiller Grounds Care, Inc. will vigorously pursue full indemnification and costs from any party responsible for such unauthorized post-manufacture modifications and/or accessories should personal injury and/or property damage result.



This symbol means:
ATTENTION!
BECOME ALERT!

Your safety and the safety of others is involved.

Signal word definitions:

The signal words below are used to identify levels of hazard seriousness. These words appear in this manual and on the safety labels attached to Schiller Grounds Care, Inc. machines. For your safety and the safety of others, read and follow the information given with these signal words and/or the symbol shown above.

DANGER

DANGER indicates a hazardous situation which, if not avoided, **WILL** result in death or serious injury.

WARNING

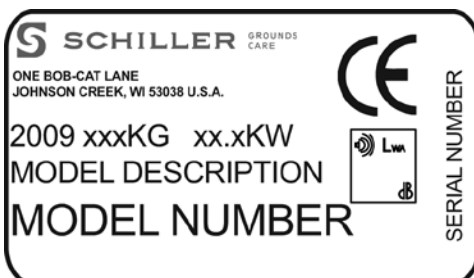
WARNING indicates a hazardous situation which, if not avoided, **COULD** result in death or serious injury.

CAUTION

CAUTION indicates a hazardous situation which, if not avoided, **COULD** result in minor or moderate injury. It may also be used to alert against unsafe practices or property damage.

CAUTION

CAUTION used without the safety alert symbol indicates a potentially hazardous situation which, if not avoided, **MAY** result in property damage.



MODEL NUMBER: This number appears on sales literature, technical manuals and price lists.

SERIAL NUMBER: This number appears only on your unit. It contains the model number followed consecutively by the serial number. Use this number when ordering parts or seeking warranty information.

JR SODCUTTER

MAINTENANCE SAFETY

In general

- Maintain machine according to manufacturer's schedule and instructions for maximum safety and best results.
- Park machine on level ground.
- Never allow untrained personnel to service machine.
- Guards should only be removed by qualified maintenance technician for maintenance/service. Replace when work is complete.
- Adjust or repair only after the engine has been stopped and the blade has stopped moving.
- Disconnect spark plug wire(s) before doing any maintenance.
- Replace parts if worn, damaged or faulty. For best results, always replace with parts recommended by the manufacturer.
- Do not dismantle the machine without releasing or restraining forces which may cause parts to move suddenly.
- Provide adequate support, e.g. jack stands for lifted machine or parts if working beneath.
- Do not put hands or feet near or under rotating parts.
- Clean up spilled oil or fuel thoroughly.
- Replace faulty mufflers.
- To reduce fire hazards, keep the engine, muffler, and fuel storage area free of grass, leaves, debris buildup or grease.

Blades

The sod cutter blade is sharp and can cut. Use extra caution when handling. Remove obstructions with care. Wrap the blade or wear gloves.

- Only replace blade. Never straighten or weld.
- Keep other persons away from blades.



Fuel

WARNING

- Petrol (gasoline) and diesel fuels are flammable; petrol (gasoline) vapors are explosive. Use extra care when handling.
- Store only in containers specifically designed for fuel.
- When refueling or checking fuel level:
 - Stop the engine and allow to cool;
 - Do not smoke;
 - Refuel outdoors only;
 - Use a funnel;
 - Do not overfill;
 - If fuel is spilled, do not attempt to start the engine until the spill is cleaned up and vapors have cleared.
- Replace caps on fuel containers and tanks securely.



Sparks from static electricity can start fires or cause explosions. Flowing fuel can generate static electricity. To prevent static electricity sparks:

- Keep fuel containers electrically grounded. Do not fill containers in a vehicle or on a truck or trailer bed with a plastic liner. Fill containers on the ground away from the vehicle.
- When practical, remove petrol (gas) powered equipment from the truck or trailer and refuel it on the ground. If equipment must be refueled on the truck or trailer, refuel from a portable container rather than a dispenser nozzle.
- Keep the dispenser nozzle in contact with the rim of the fuel tank or container opening until fueling is complete. Do not use a nozzle lock-open device.

SET-UP

JR SODCUTTER

SET-UP

- To prevent injury, wear appropriate eye protection and stand clear when cutting banding. Banding is under tension and may snap back when cut.
- 1. Remove crate top, sides and plastic covering unit. Remove the banding attaching the Jr. Sodcutter to the pallet.
- 2. Roll the Jr. Sodcutter off the pallet. The unit can also be driven off the pallet, but first read the Safety, Controls, and Operation sections of this manual, then check the oil and add gas.
- 3. Dispose of pallet, crate, plastic and banding in a responsible manner.

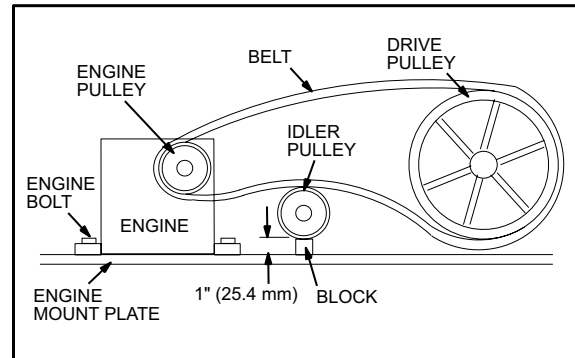
JR SODCUTTER

DRIVE BELT ADJUSTMENT

Keep belt free of oil and dirt, and adjusted to proper tension at all times.

Belt tension is adjusted by loosening four (4) engine mounting bolts and shifting engine on the base.

Belt tension is correct when the distance between the roll pin and sleeve on the master clutch rod is 1" to 1 1/4" (25-30mm) when the master clutch is engaged.



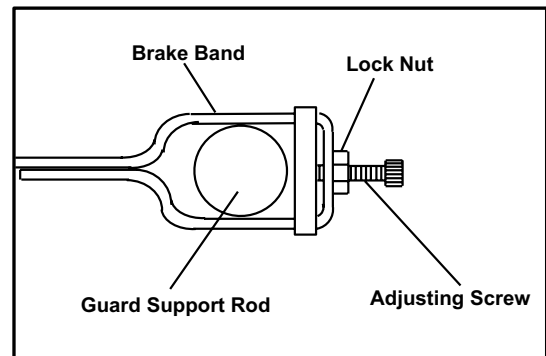
BRAKE BAND ADJUSTMENT

When adjusted properly:

- With the red master clutch control lever engaged, the brake band is not braking the large drive pulley.
- When the red master clutch control lever is disengaged, there will be some braking occurring on the large drive pulley.
- When the red master clutch control lever is disengaged, and pulled back firmly, the brake will fully stop the large drive pulley.

1. For less braking, loosen the locknut, unscrew the adjusting screw, then retighten the locknut.
2. For more braking, loosen the locknut, turn the adjusting screw in, then retighten the locknut.

Start the machine, and check for proper operation. Readjust if necessary. IF the engine kills when engaging the red master clutch control lever, the brake may be set too tight.

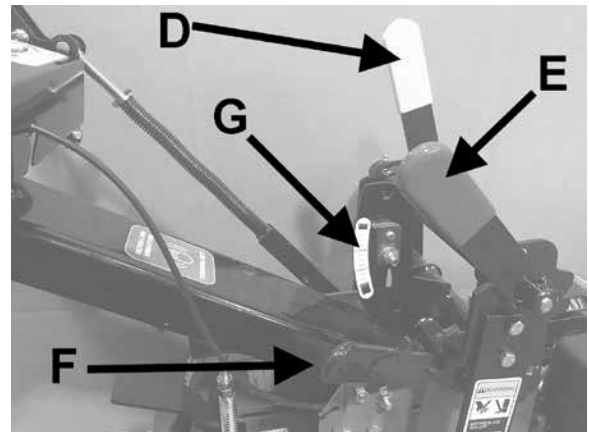


ADJUSTING DEPTH OF CUT

3/4" (20mm) is a good general starting depth of cut. Depth of cut can be varied from there depending on conditions and what you are trying to accomplish.

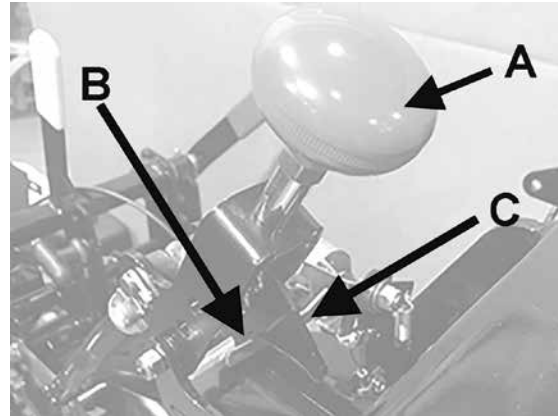
1. Make an initial depth setting. Park the machine on a hard surface. Loosen green depth control locking lever E and lower yellow depth control lever D until the blade rests on the surface.
2. Loosen the depth gauge lock and set top of depth gauge G to 3/4" (20mm) below the yellow depth control lever D. Tighten the depth gauge lock knob to secure the depth gauge setting.
3. Use your left hand to tip the machine forward while lowering the yellow depth control lever D until the depth control crossbar hits the Depth Stop G. Tighten the green locking lever E to lock in the depth setting, make a trial run in turf. Check the depth of cut.

4. Re-adjust the depth gauge G and yellow depth control lever D if necessary.



ADJUSTING OPERATOR PRESENCE CONTROL

1. To adjust operator presence cable, pull red clutch control handle **A** rearward as far as possible.
2. Press operator presence handle (right handlebar) down as far as possible.
3. Adjust cable until the pivot arm **C** contacts the arm extending from the operator presence switch **B**.
4. Tighten cable clamp to secure cable. Check for proper operation.

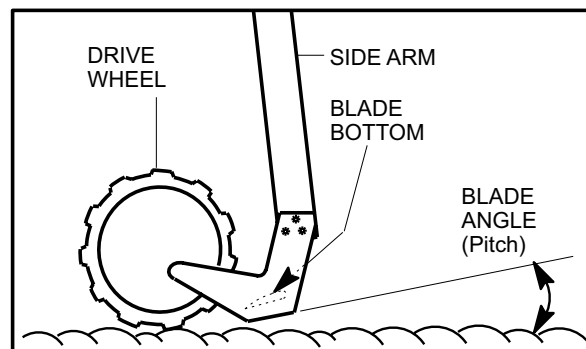


Cover removed for clarity

BLADE ANGLE (PITCH)

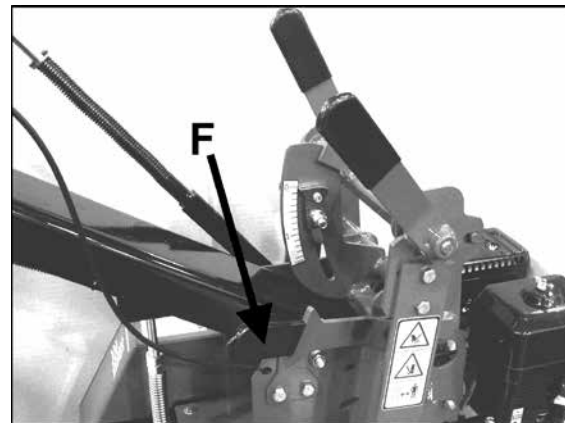
Under normal operating conditions, blade angle is minimal (blade bottom is flat). In extremely hard soil or when cutting with a dull blade, the blade may want to ride out of the ground. It may then help to adjust blade angle forward (see Adjusting Blade Angle below). A short trial run will indicate which is the best blade angle.

NOTE: Extreme blade angles put extra stress on the side arms. To reduce stress on the machine, operate with the flattest blade angle that gives satisfactory results.



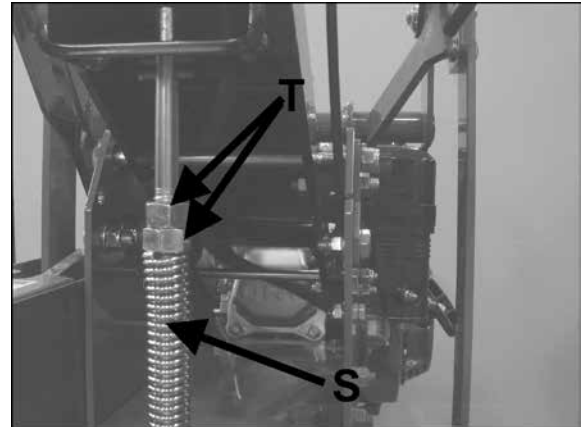
ADJUSTING BLADE ANGLE (PITCH)

1. Loosen black blade angle control locking lever **F** and move H-frame forward or backward until blade is at desired angle (pitch).
2. Tighten black blade angle control locking lever **F**.



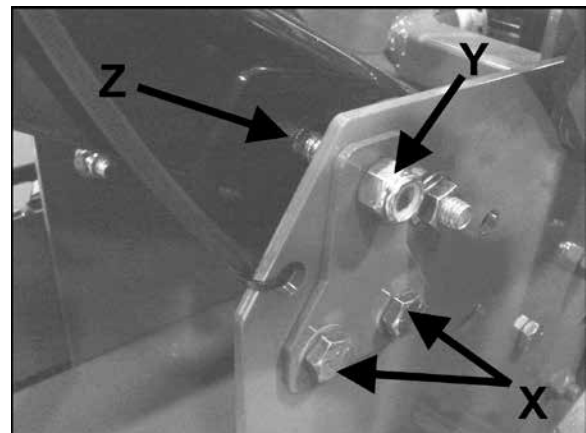
HANDLE SUPPORT SPRING

This spring **S** helps support the handle. If the four (4) isolator handle mounts are sagging or distorted, the two locking adjustment nuts **T** can be tightened downward to increase the spring force and raise the handle.



HANDLE STOP BOLTS

These two bolts **Y** limit the amount of handle movement. This prevents damage to the handle isolators, and provides positive control of the machine when extra effort is required to lift or turn. The rear stop bolt position is adjustable. Loosen the two bolts **X** on the bolt centering plates on each side and tighten with the stop bolts centered in the two handle holes **Z**.



WARNING

When replacement parts are required, use genuine **Schiller Grounds Care, Inc.** parts or parts with equivalent characteristics, including type, strength and material. Failure to do so may result in product malfunction and possible injury to the operator and/or bystanders.

Carbon monoxide present in the exhaust is an odorless and deadly gas. Never start or run the engine inside where exhaust fumes can collect. Provide enough fresh air to keep fumes from getting too strong.

Replace any warning decal that becomes illegible immediately.



DAILY MAINTENANCE

Operator Presence System

For the engine to run, the Operator Presence Lever must be held when the Master Clutch Control is engaged.

To Check:

1. Start the engine and run at 1/2 throttle with the master clutch disengaged.
2. Engage the master clutch holding the Operator Presence Lever. Release the operator presence lever and the engine should stop.

Repair the machine before using if the Operator Presence System does not kill the engine.

Blades:

Check for damage. Replace any broken, cracked or otherwise damaged blades. Do not weld or straighten blades. Replace or sharpen dull blades. See sharpening instructions.

Hardware:

Tighten any nuts and bolts that are found loose. Replace any broken or missing cotter pins. Repair any other problems before operating.

Engine:

See engine manual for oil change intervals and oil specifications. See engine manual for air cleaner service intervals and service procedure.

Lubrication:

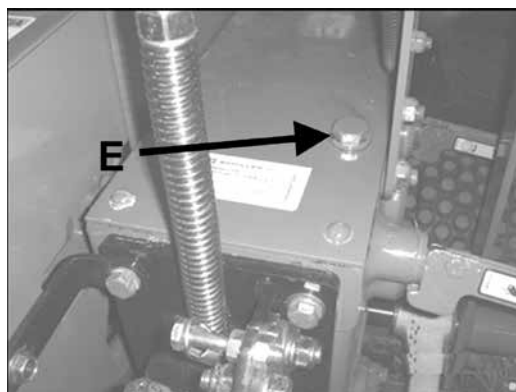
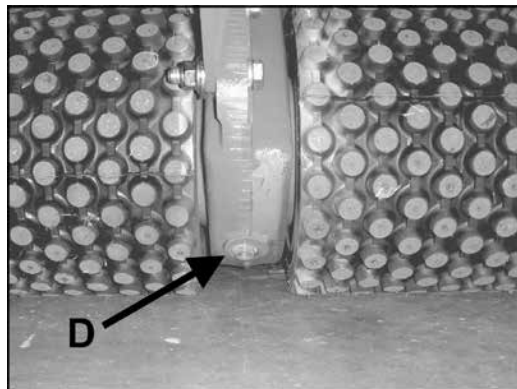
The gear case is initially filled with 3 1/2 pints (1.7 L) of EP 140 Gear Lube. Do not add to this amount unless oil is changed or lost through leakage. Gear case drain plug **D**.

On all pressurized lubrication fittings use a good grade of Lithium Based lubricant.

The Jr. Sodcutter has 6 lubrication fittings. Lubricate pitman arms (1 each side) and side arms (1 each side) after every 4 hours of use.

Lubricate side arm pivots (1 each side - top of unit) after every 8 hours of use.

Check gear case lubricant level using dipstick **E** located on top of gear case. Check lube with dipstick sitting on threads, do not screw in.

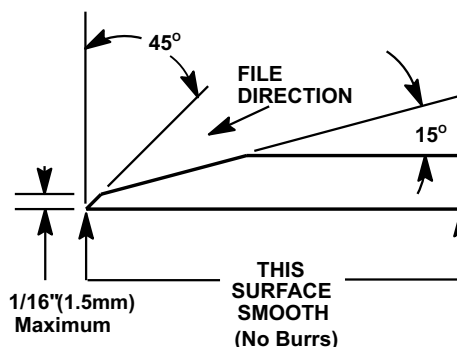


BLADE SHARPENING

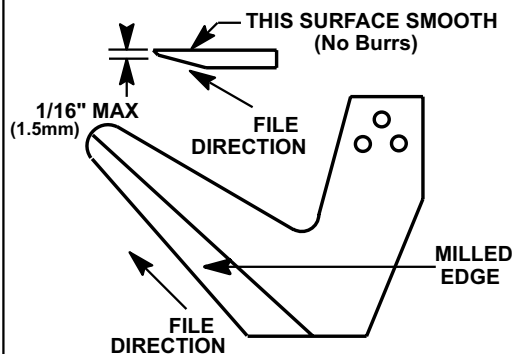
Wear the appropriate personal protective equipment when sharpening blades.

1. Hand file bottom blade at 45° angle until no flat remains.
2. To keep cutting edge less than 1/16" (1.5mm) on 45° angle, grind milled surface back at 15° to less than 1/16" (1.5mm).
3. Hand file side blades at 45° until no flat remains.
4. To keep cutting edge less than 1/16" (1.5mm) on 45° angle, grind milled surface back at 15° to less than 1/16" (1.5mm).

BOTTOM BLADE

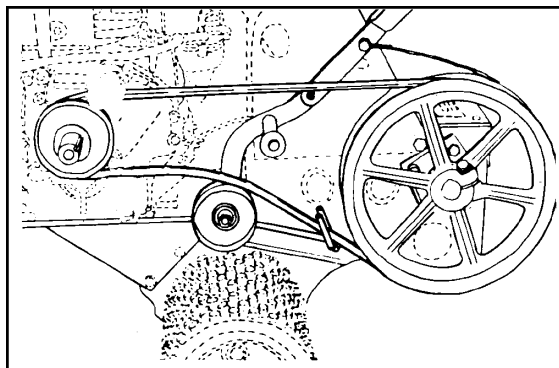
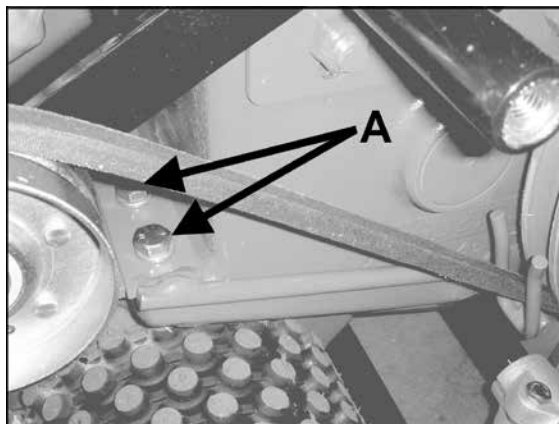


SIDE BLADE



DRIVE BELT REPLACEMENT

1. Remove shield on left side of unit.
2. Remove nut securing brake band to clutch control rod.
3. Remove cotter pin on outside of guard support rod and move brake band over to nut on rod.
4. Loosen two bolts **A** securing belt guide to provide clearance when removing belt.
5. Remove belt from engine pulley. To do this, loosen upper and lower belt guards, or remove the engine pulley.
6. Install new belt in reverse procedure. Route the belt as shown.
7. Adjust belt and brake band. See Adjustment Section.



DRIVE CHAIN REMOVAL

1. Raise unit, place on adequate supports and remove belt guard.
2. Remove four (4) screws securing gear case cover.
3. Remove throttle cable from engine and lay behind cam case.
4. Remove dipstick from cover.
5. Remove screw, flat washer, nut and bushing from right lower side of "H" frame.
6. Using a screwdriver, lift gear case cover to break sealant bond and remove cover.
7. Drain oil out of front cavity on case, and turn drive wheels until master link is on top of sprocket.
8. Connect new chain to old with master link. Rotate drive wheels until new chain is pulled around. Remove old chain and connect new chain with a new master link.
9. Complete installation by reversing procedure. Clean mating surfaces on case and cover. Apply 3M Scotch Grip 847 or an equivalent adhesive to case cover before installation.

DRIVE WHEEL CHAIN SPROCKET SHAFT

1. Follow steps 1 thru 7 in drive chain removal section.
2. Remove master link and remove chain from top sprocket.
3. Remove both drive wheels and axle keys.
4. Remove seal in case and snap ring retaining bearing in case.
5. Install axle nut on end of shaft, opposite the side of snap ring previously removed.
6. Using a soft hammer (lead, brass, etc.), drive shaft out of case. Sprocket can now be removed by lifting up on chain.
7. Top sprocket and chain should be checked for wear and replaced if necessary.
8. Reassemble in reverse procedure using new seals and gaskets.

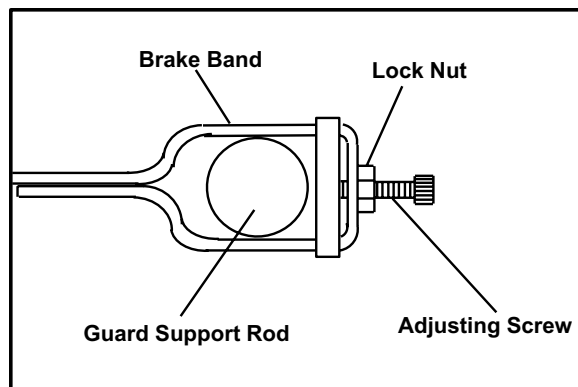
BRAKE BAND REPLACEMENT AND ADJUSTMENT

1. Remove belt guard.
2. Remove old brake band.
Retain all hardware.
3. Install new brake band with the large loop and hardware at the lower mounting point (on guard support rod).
4. Loosen the lock nut and the adjustment screw on the new brake band. Engage the red Clutch Control lever and tighten the adjustment screw until the brake band is pulled snug against the belt. (See Brake Band Adjustment, pg. 5) Tighten the lock nut on brake adjustment screw. Make a test run. Stop engine and re-adjust brake band if necessary.
5. Re-install belt guard using original hardware.

NOTE: Make sure that cotter pin does not interfere with drive belt.

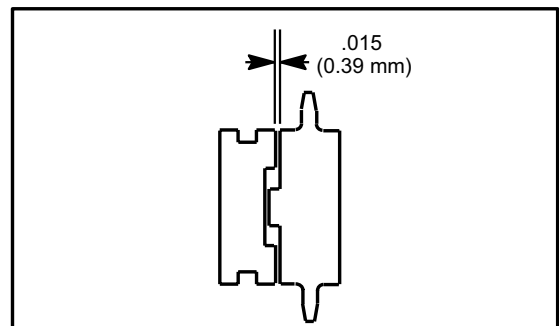
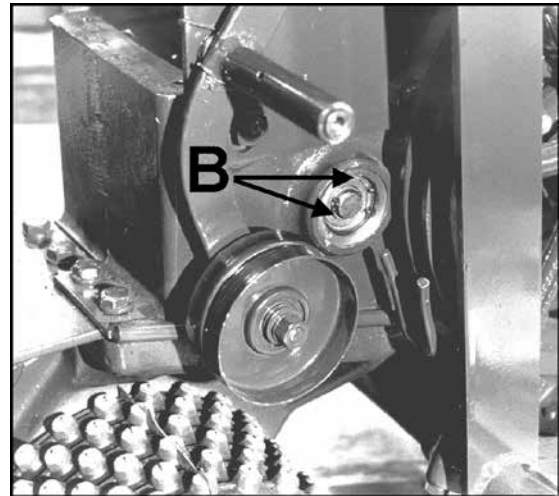
Routine brake band adjustment is necessary as the band and belt wear.

If brake band is not correctly attached to clutch control link, idler arm will rotate backward away from belt and no drive will occur.



UPPER DRIVE SPROCKET & SHAFT

1. Follow steps 1 thru 6 in drive chain removal section.
2. Remove master link from chain. Chain does not need to be removed from lower sprocket.
3. Remove drive shifter assembly from gear case.
4. Remove blade and side arms from pivot brackets for easier access.
5. Remove plugs on both ends of shaft.
6. Remove snap rings **B** from left bearing.
7. Using a punch and soft hammer (lead, leather, etc.), drive shaft out left side of unit and remove large gear.
8. Using a bearing puller or slide hammer, remove bearing. Shaft is now removable through cam case cover opening.
9. Dog clutch half is removable from gear by removing snap ring.
10. Assemble in reverse procedure.
11. After installing blade shifter assembly, adjust dog clutch to provide .015" (0.39 mm) clearance between clutch faces, as shown.
12. Apply 3M Scotch Grip adhesive or an equivalent to gear case cover before installation.



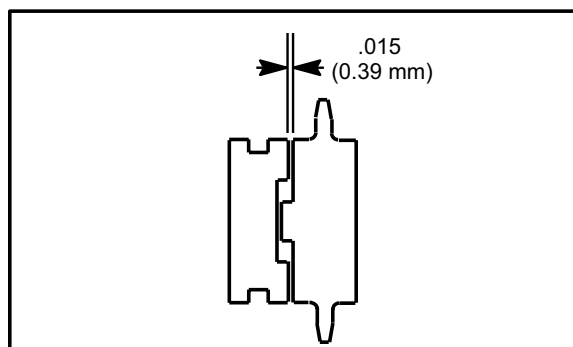
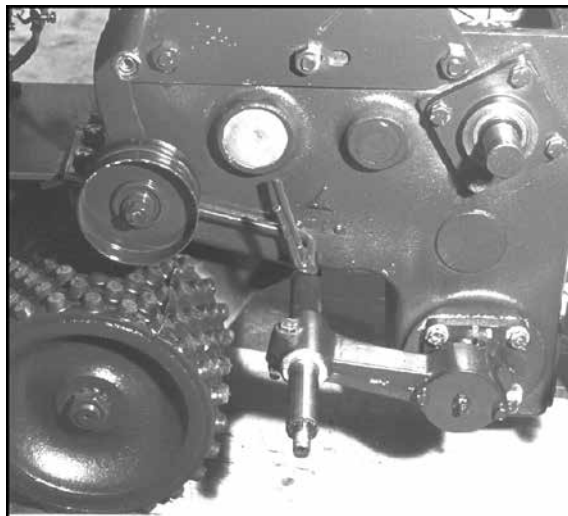
BLADE DRIVE CHAIN REPLACEMENT

NOTE: To prevent small components from falling down into oil cavities and causing damage to unit, cover opening with clean rags, cardboard, etc.

1. Follow steps 1 thru 6 in drive chain removal section.
2. Remove bottom screw on bearing cage to drain oil from rear cavity.
3. Rotate pulley shaft until master link is to front of top sprocket. Remove master link.
4. Rotate blade drive shaft until chain is free.
5. Install new chain in reverse procedure. Use 3M Scotch Grip 847 or an equivalent adhesive on case cover and bearing retainer screw.

PULLEY SHAFT

1. Follow steps 1 thru 4 in belt replacement section and steps 2 thru 6 in drive chain removal section.
2. Remove blade from unit and remove left side arm.
3. Remove blade shifter assembly.
4. Turn pulley until master link is on top of sprocket. Remove chain from top sprocket.
5. Remove belt pulley and key.
6. Remove four (4) bearing cage screws and pull gears out left side of unit. Dog clutch and double sprocket will slide off as shaft is removed.
7. To remove gear and bearing, remove snap ring, slide gear off shaft and remove key. Remove bearing snap ring and remove bearing.
8. Assemble in reverse procedure. After blade shifter assembly is installed, adjust dog clutch to provide .015" (0.39 mm) clearance between clutch faces, as shown.
9. Apply 3M Scotch Grip 847 adhesive or equivalent to gear case cover before installation.

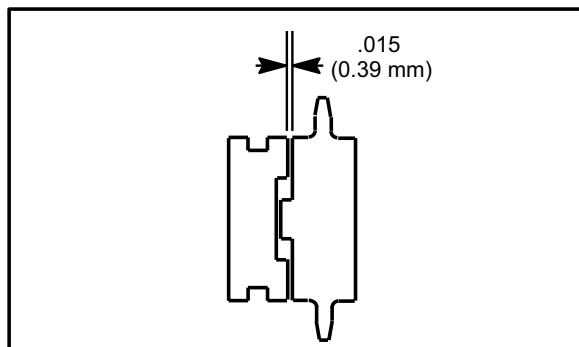
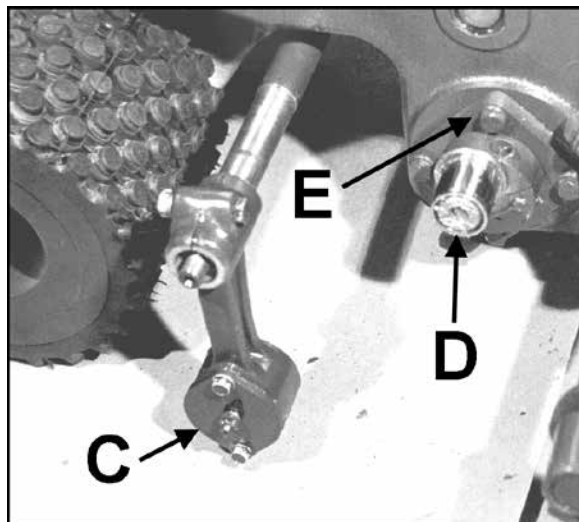


BLADE SPROCKET SHAFT

1. Follow steps 1 thru 6 in pulley shaft section.
2. Loosen clamp screw on left pitman arm **C** and remove from shaft.
3. Loosen clamp screw in eccentric assembly **D** and remove.
4. Remove two (2) top screws securing the other side arm assembly. Side arm, shaft and pitman arm, are now removable by pulling side arm out.
5. Remove eccentric and both bearing cages **E**. Put a pan under rear portion of case to catch oil from case cavity.
6. Push shaft to left of case, lift right end of shaft out of case with bearings and sprocket intact.
7. To remove sprocket, press bearing from shaft, and slide sprocket off.
8. Assemble in reverse procedure. After blade shifter assembly is installed, adjust dog clutch to provide .015" (0.39 mm) clearance between clutch faces, as shown.

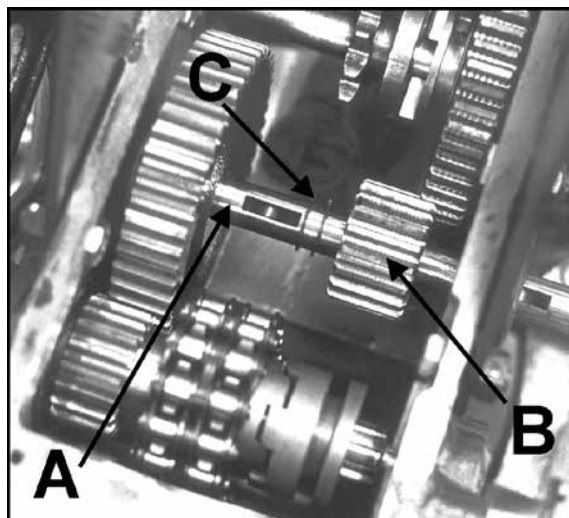
NOTE: End play on shaft must not exceed .005 (.127 mm) clearance and should rotate freely when bearing cages are tightened. Shim as required to obtain correct clearance.

9. Apply 3M Scotch Grip 847 adhesive or equivalent to gear case cover before installation.



IDLER GEAR SHAFT

1. Remove belt guards.
2. Follow steps 2 thru 6 in drive chain removal section.
3. Remove plug from right side of unit.
4. Remove snap ring **C** from groove by small gear **B** to left end of shaft **A**.
5. Move small gear **B** to left side (from operators position) of case.
6. Move shaft **A** out right side of case until large gear clears shaft for removal.
7. Remove key from shaft and slide snap rings **C** off end of shaft.
8. Small gear **B** will slide off as shaft is removed from gear case.



9. Assemble in reverse procedure. Apply 3M Scotch Grip 847 adhesive or equivalent to gear case cover before installation.

STORAGE INSTRUCTIONS

⚠ WARNING

To prevent possible explosion or ignition of vaporized fuel, do not store equipment with fuel in tank or carburetor in enclosure with open flame (for example, a furnace or water heater pilot light).

Daily Storage

1. Check engine oil level and air filter element daily.
2. Check oil level in gear case.
3. Close fuel valve at bottom of fuel tank.
4. Clean cutting blade (grass, dirt, etc.).

EXTENDED STORAGE

Before the equipment is put into storage for any period exceeding 30 days:

1. Drain all fuel from fuel tank and lines (use a hose or fuel line, routed from fuel tank shut-off to proper container).
2. Start engine and run until all fuel is used from the carburetor float bowl.
3. While engine is warm, drain the crankcase oil and refill with the proper weight of oil corresponding to the season when the equipment will next be used.
4. Remove the spark plug and squirt a small quantity of engine oil into the cylinder. Turn the engine over a few times to distribute the oil.
5. Lubricate all lubrication fittings.
6. Clean and oil cutting blade to prevent rust.

To put equipment into operation after an extended storage:

1. Fill fuel tank with clean fresh fuel.
2. Check crankcase oil level, and start engine.
3. Check fuel system for fuel leaks.

POSSIBLE PROBLEM	PROBABLE CAUSE	REMEDY
Blade will not stay in ground.	A. Bottom of blade is rounded off. B. Blade angle is not properly set.	A. Sharpen or replace blade. See page 15. B. Adjust blade angle. See page 13.
Root hair pinning on side or bottom of blade.	A. Some types of turf and soil make this a problem.	A. Keep the blade extra sharp and ground back at a low angle.
Belt jumps off.	A. Wrong type of belt construction. B. Too much slack when belt tightener is disengaged.	A. Use only the special Ryan factory belt. B. Slide engine forward and readjust control rod.
Locking levers not tight when pulled to limit of travel.	A. Thread wear on locking nut. B. Locking nut not properly adjusted.	A. Replace locking nut. B. Tighten locking nut on opposite end of tie rod.
Belt grabs in pulleys and unit creeps when red clutch is not engaged	A. Belt is old and frayed, or is not the type sent out with the unit. B. Rust or paint in pulley grooves. C. Engine set too far forward.	A. Replace with factory construction belt, designed for belt tightener clutches. B. Clean and polish pulleys. C. Move engine back.
Idler does not engage belt when red clutch lever is moved forward.	A. Brake band is not attached to clutch link or is broken.	A. Reattach upper end of brake band to clutch link or replace brake band.

SPECIFICATIONS

Jr. Sodcutter

Models: 744844H.....Jr. Sodcutter - 12 in.(30.5cm)
744845H.....Jr. Sodcutter - 18 in.(45.7cm)

Engine
Model.....4 cycle 6.5H.P.(4.8KW) B&S Vanguard,
Model 12H332, Type 0159,
Trim B8, 12.5 cu. in. (205 cc)
Starter..... Recoil
Governor..... 3600 RPM \pm 100 RPM, no load
Clutch..... spring loaded belt tightener type

Reduction
Engine to blade..... 2.94:1
Engine to drive wheels..... 55.8:1

Models: 744944C.....Jr. Sodcutter - 12 in.(30.5cm)
744945C.....Jr. Sodcutter - 18 in.(45.7cm)

Engine
Model..... 4 cycle 5.5 H.P. Honda
Model GX160-K1QX2, GX160 OHV
9.9 cu. in. (163 cc)
Starter..... Recoil
Governor..... 3600 RPM \pm 100 RPM, no load
Clutch..... spring loaded belt tightener type

Reduction
Engine to blade..... 2.94:1
Engine to drive wheels..... 55.8:1

Wheels:
Drive..... 8" (203 mm) Dia. w/knobby
tread vulcanized to hub
Rear.....8 x 1.75 (203 X 45mm) semi-pneumatic
tires
with pre-packed ball bearings
Drive:
Engine to gear case..... "A" section belt
Gear case to drive shaft
and blade drive.....roller chain

Gear case:
Lubrication..... EP140 Gear lube
Capacity..... 3 1/2 Pints (1.7L)

Cutting width:
744844H & 744944C.....11 3/4" (298 mm)
744845H & 744945C.....18" (457 mm)

Cutting depth:.....up to 1.5" (38mm)
Blade pitch:
Hand lever adjustment..... variable 0° to 9°

Blade speed:
1225 oscillations/min @ 3600 engine RPM

Dimensions:
Width..... 24" (600 mm)
Length..... 49" (1244 mm)
Height..... 33" (838 mm)
Wheelbase..... 19" (483 mm)

Weight:
744844H & 744944C..... 333 lbs. (151 Kg)
744845H & 744945C..... 377 lbs. (171 Kg)

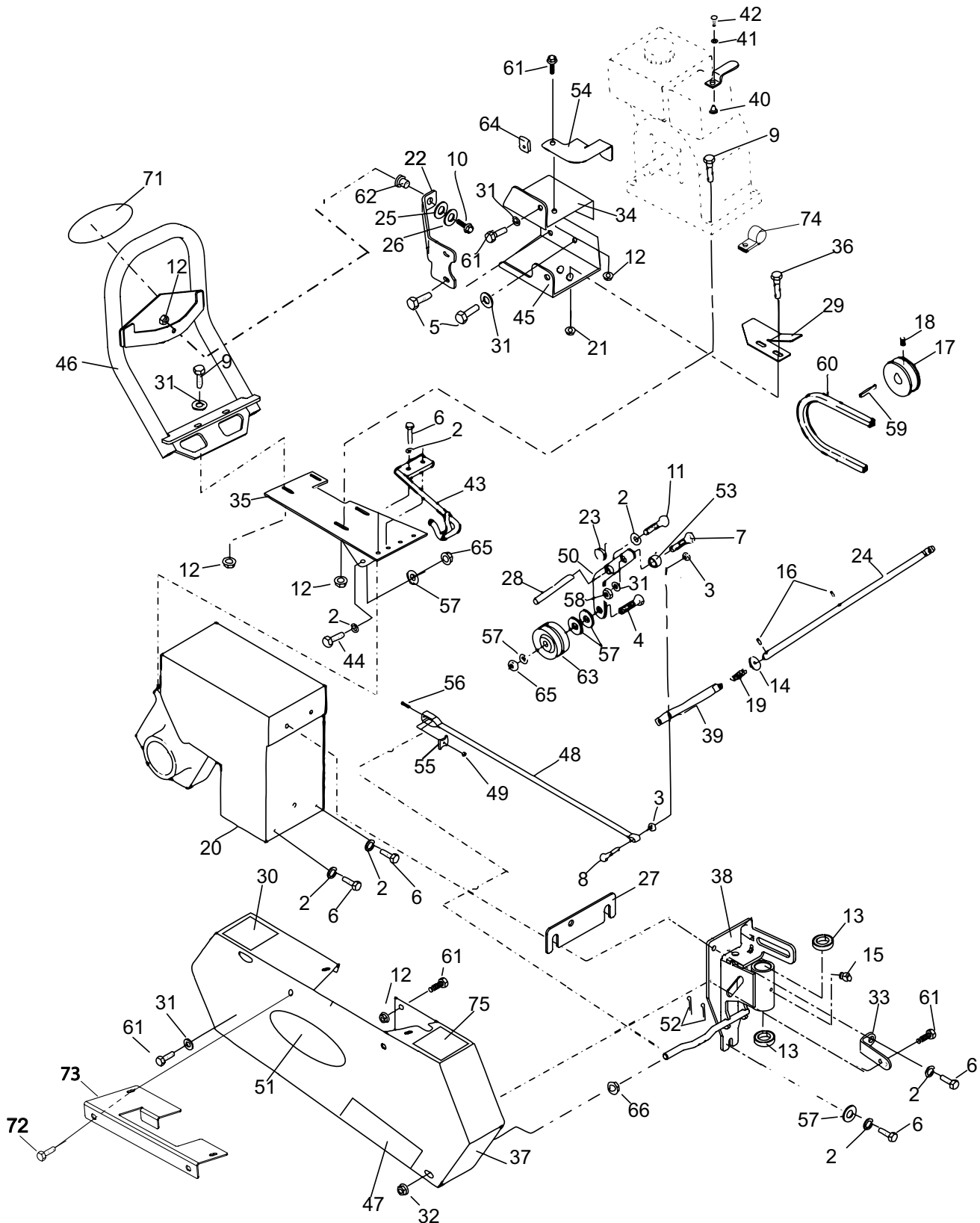
TOUCH -UP PAINT:
16OZ. (0.5L) Spray can, order P/N 65334

PARTS SECTION

DRIVE ASSEMBLY AND SIDE COVER

JR SOD CUTTER

FIGURE 1



DRIVE ASSEMBLY AND SIDE COVER

JR SOD CUTTER

FIGURE 1

ITEM	PART NO.	DESCRIPTION	QTY	ITEM	PART NO.	DESCRIPTION	QTY
1	64163-55	WASHER .328X.75X14 GA	1	47	4133034	LABEL-JR SOD CUTTER	1
2	64006-03	LOCKWSHR-HELICAL 3/8	15	48	524573	BAND, BRAKE	1
3	64001-13	NUT-HEX JAM 1/4-20	2	49	64025-14	NUT-HEX #10-32	1
4	64123-67	BLT-HEX 3/8-16X2	1	50	4164571.7	WLDMT-IDLER ARM	1
5	64139-01	BLT-WLF 5/16-24X3/4	4	51	4163976	LABEL-RYAN	1
6	64123-50	BOLT-HEX 3/8-16X1	14	52	64168-2	HAIRPIN	2
7	64123-68	BOLT-HEX 5/16-18X1	5	53	819337	BUSHING	1
8	64123-269	BLT-HEX 1/4-20X1-1/8	1	54	524610.7	BRACKET,BELT GUIDE	1
9	64139-23	BLT-WLF 5/16-18 X 1-3/4	4	55	524574	NUT, BRAKE BAND	1
10	64139-10	BLT-WLF 5/16-18X1-1/4	1	56	64044-22	SCREW-SET #10-32X1	1
11	64123-15	BOLT-3/8-16X3/4 HEX	1	(ITEMS 55, 56, 49 & 48 ARE AVAILABLE IN BRAKE BAND KIT 540274)			
12	64141-6	NUT, 5/16-18	4				
13	4129801	BEARING-FLANGE	2	57	64163-31	WSHR 25/64X1X12	6
14	64163-67	WASHER-.516X1X12GA	2	58	64141-9	NUT-WLF 5/16-18 EL	1
15	85010N	ZERK-GREASE	1	59	64164-11	KEY-3/16X3/16X1-1/4 SQ END	1
16	64176-11	PIN-COILED SPRING 3/16X12	2	60	524582	BELT,V A SECT. 66" LONG	1
17	517137	PULLEY,4" DIA "A" SIZE	1	61	64139-06	BLT-WLH 5/16-18X5/8	6
18	64044-18	SCREW-SET 5/16-18 x 5/16	2	62	2702464	BUSHING,ISOLATION	1
19	518535	SPRING	1	63	548942	PULLEY, PLAIN IDLER 3.25"	1
20	4175979	ASSY-GEARCASE 12"	1	64	800889	NUT,.31-18 SPD J W/NUT	2
	4175980	ASSY-GEARCASE 18"		65	64268-03	NUT-FL NYLON LOCK 3/8-16	3
21	64141-2	NUT-WLF 1/4-20	2	66*	524775	FILTER,AIR CLEANER	1
22	524773.2	BRACE-GUARD	1	67*	524776	FILTER,AIR PRE-CLEANER	1
23	520785	SPRING	1	68*	540385	KIT,SPARK ARRESTOR	1
24	4164474	ROD-CONTROL	1	(ITEMS 66-68 USED ON BRIGGS & STRATTON ENGINES ONLY)			
25	838496	WASHER, 25 1.00.125 FLAT	1	69*	524777	FILTER,AIR W/PRE-CLNR	1
26	64163-29	WASHER-21/64 X 1 X 11GA	1	70*	540374	SPARK ARESTOR W/SCRW	1
27	4164506.7	SPACER-CASTER ASM	1	(ITEMS 69 & 70 USED ON HONDA ENGINES ONLY)			
28	521087	SHAFT	1	71	4175971	LABEL-RYAN	1
29	4164546.7	GUIDE-BELT, JR	1	72	64152-56	SCREW-HS S-TAP #12X1/2	4
30	4163592	DECAL,WARNING HANDS	1	73	4163857.2	COVER-EXTENSION	1
31	64163-55	WASHER .328X.75X14 GA	5	74	48228A	CABLE CLIP-INSULATED	1
32	64141-13	NUT-WLF 1/2-13	2	75	340830	LABEL-CAUTION SPANISH	1
33	520773.7	BRACKET	1				
34	4163910.7	BRACKET, BELT GUARD,TOP	1				
35	524473.2	PLATE,ENGINE MOUNT	1				
36	64139-02	BLT-WLF 1/4-20X1/2	2				
37	4163914	S-GUARD ASSY	1				
38	4175997	S-WLDMT, REAR WHL SPRT	1				
(ITEMS 13 & 15 INCLUDED)							
39	4164477.7	WLDMT-CLEVIS	1				
40	831888	SWIVEL	1				
41	831889	WASHER,SWIVEL	1				
42	831890	SCRW,SWIVEL THROTTLE	1				
(ITEMS 40-42 USED ON HONDA ENGINES ONLY)							
43	545380.2	GUIDE AY, BELT	1				
44	64123-87	BOLT-HEX 3/8-16X1-3/4	2				
45	4164580.7	BRKT-BELT GUARD,BTTM	1				
46	4175972.7	GUARD AY, FRONT	1				

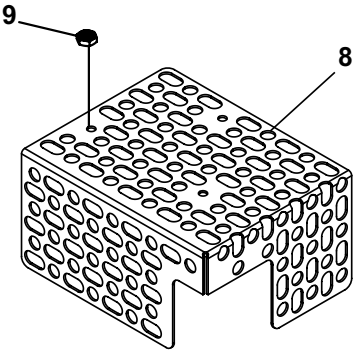
* NOT ILLUSTRATED

MUFFLER GUARDS

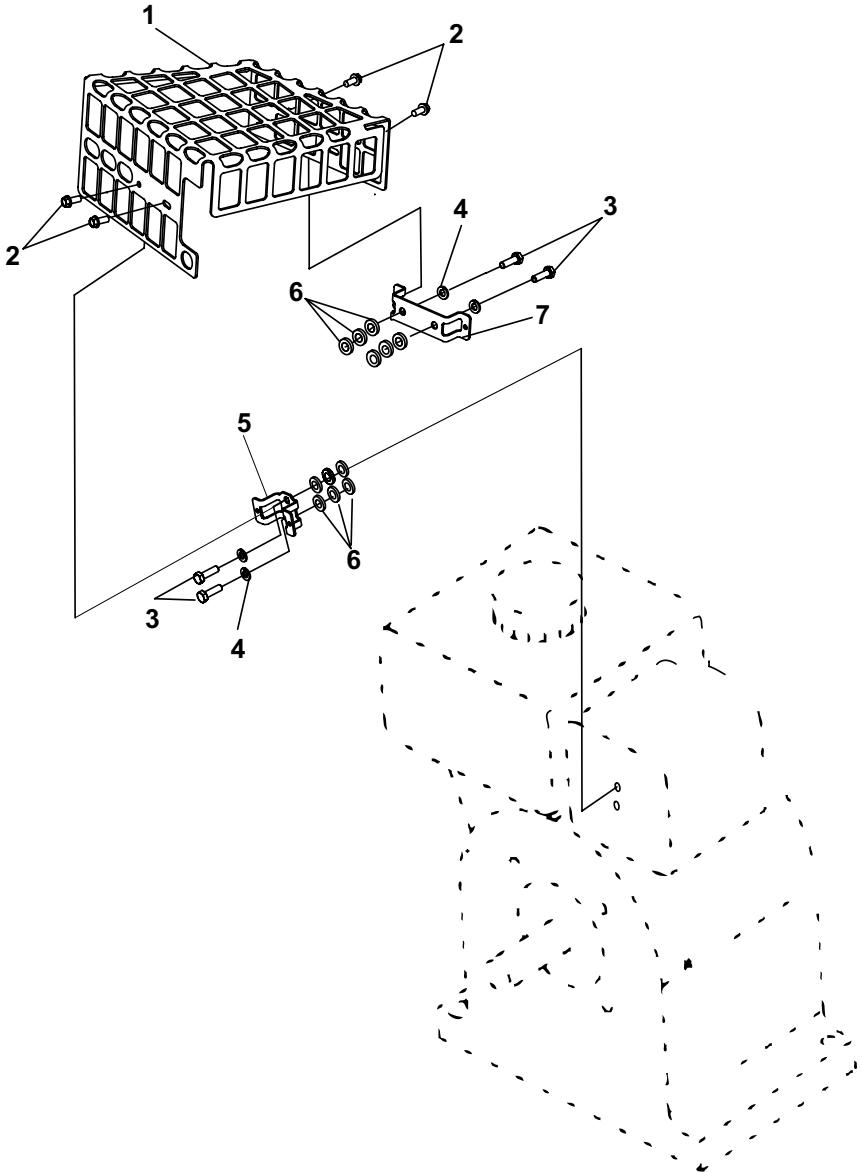
FIGURE 2

JR SOD CUTTER

HONDA MUFFLER GUARD



BRIGGS & STRATTION
MUFFLER GUARD



JR SOD CUTTER

FIGURE 2

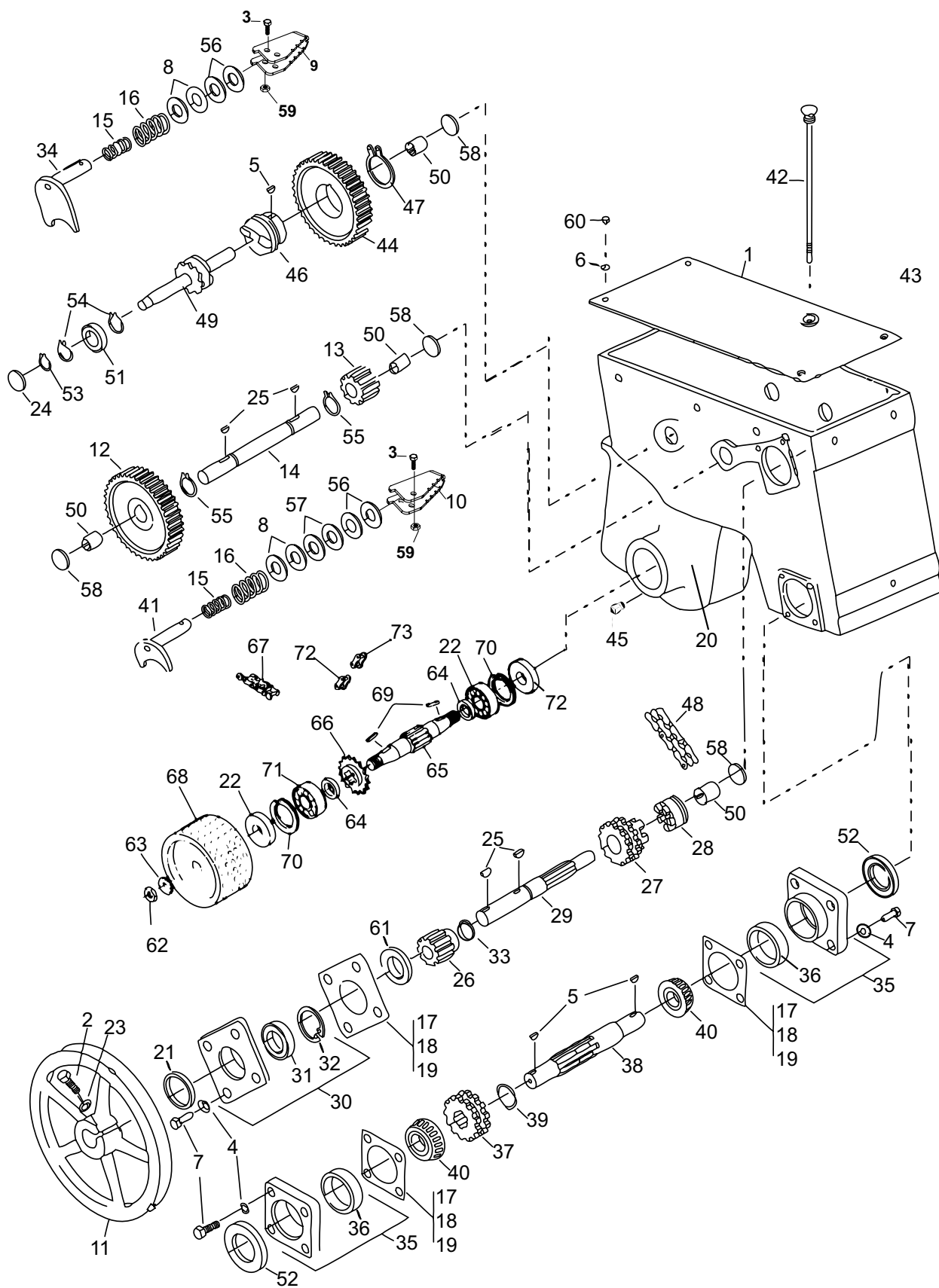
ITEM	PART NO.	DESCRIPTION	QTY	ITEM	PART NO.	DESCRIPTION	QTY
1	4160486.7	GUARD-MUFFLER B&S (USED ON B&S MODELS ONLY)	1				
2	64152-56	SCREW-HS STAP #12X1/2	4				
3	64205-038	BLT-METRIC M6-1.00X20	4				
4	64006-01	LOCKWSHR-1/4 HELICAL	4				
5	4160484.7	BRKT-MUFFLER GRD VERT (USED ON B&S MODELS ONLY)	1				
6	64163-02	WSHR .321/.328X.608X11GA	12				
7	4160485.7	BRKT-MUFFLER GRD HORZ (USED ON B&S MODELS ONLY)	1				
8	4163902.7	GUARD-MUFFLER HONDA (USED ON HONDA MODELS ONLY)	1				
9	64207-08	NUT-HEX M5-.8 EDGE LOCK	3				
10*	4163904	KIT-MUFFLER, HONDA (CONTAINS ALL THE HONDA PARTS NEEDED TO MOUNT ITEM 8)					

Gear Case

GEAR CASE

JR SOD CUTTER

FIGURE 3



JR SOD CUTTER

GEAR CASE

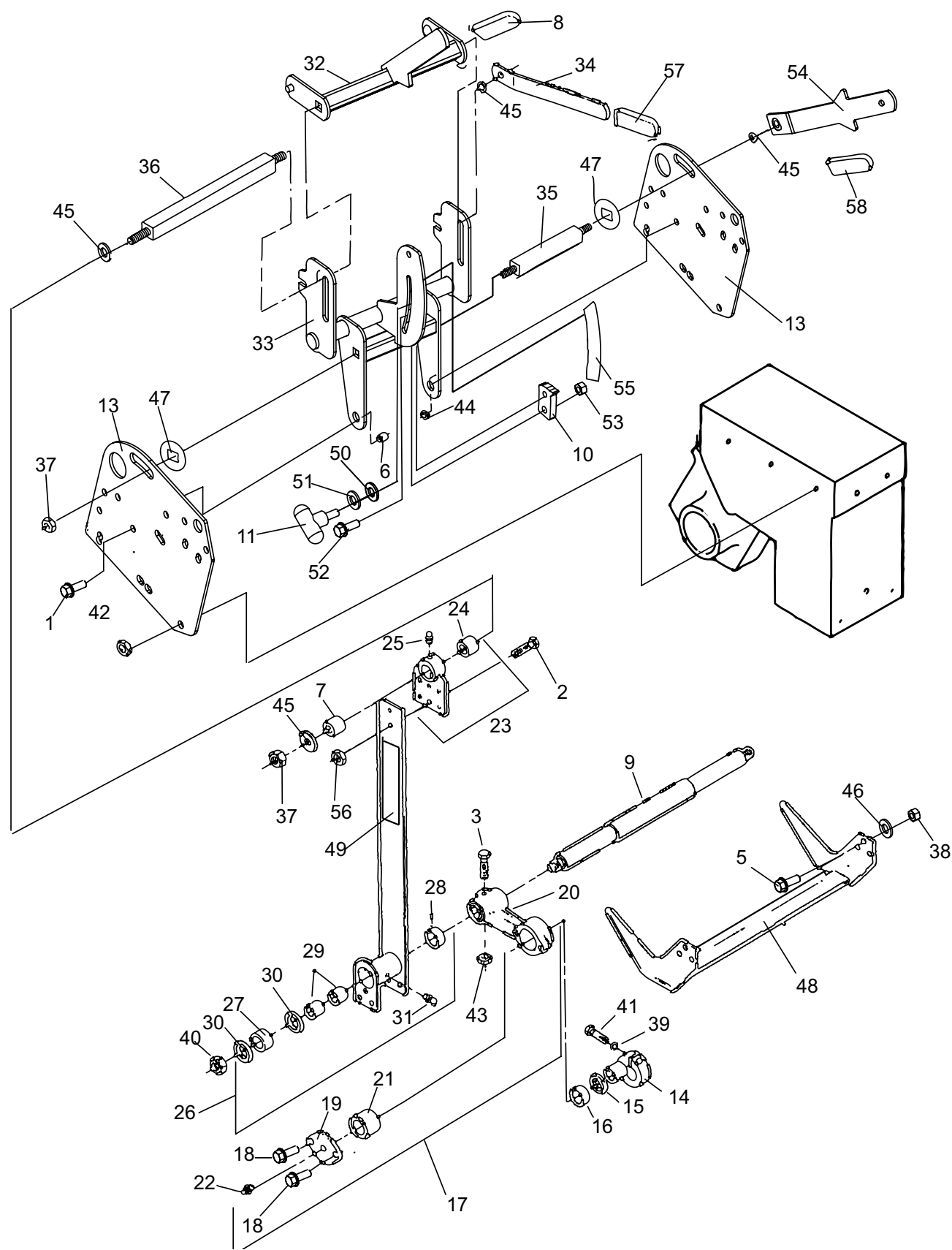
FIGURE 3

ITEM	PART NO.	DESCRIPTION	QTY	ITEM	PART NO.	DESCRIPTION	QTY
1	4175979	ASSY-GEARCASE 12"	1	40	814473	CONE,TPRD RLR BRG 1.00	2
	4175980	ASSY-GEARCASE 18"		41	545710	SHAFT AY	1
	(INCLUDES ITEMS 1-74)			42	546033.7	DIPSTICK AY	1
2	64123-67	BLT-HEX 3/8-16X2	1	43	546037.7	COVER AY, GEAR CASE	1
3	64123-80	BLT-HEX 1/4-20X1-1/4	2	44	519404	GEAR,DRIVE	1
4	64006-02	LCKWSHER-HELICAL 5/16	12		(INCLUDES ITEMS 45-47)		
5	64164-19	KEY WOODRUFF.19X.75 #9	3	45	548775	PLUG.25-18NPTF HS	1
6	64006-01	LOCKWASHER-1/4 HELICAL	4	46	516222	HUB	1
7	64123-68	BOLT-HEX 5/16-18X1	12	47	548329	RING,EXT LOCK 1.61ID.06T	1
8	515891	SHIM,.64 1.25.010 YS	4	48	546937	CHAIN, #50 DOUBLE	1
9	4175981	HANDLE-SHIFTER,DRIVE	1	49	547427	SPROCKET & SHAFT AY	1
10	4175982	HANDLE-SHIFTER, CUT	1	50	548080	BRG.NDL.75 1.00.75	4
11	515901.7	PULLEY	1	51	548096	BRG,BALL.59 1.38.43 "SS"	1
12	516145	GEAR	1	52	548272	SEAL,OIL 1.00 SHAFT	2
13	516150	GEAR	1	53	548321	RING,EXT RET.56ID.037	1
14	516156	SHAFT	1	54	548323	RING, INTRNL RETAINING	2
15	516194	SPRING	2	55	548324	RING,EXT RET.691ID	2
16	516196	SPRING	2	56	548477	WASHER	4
17	520238	SHIM .005 (.13MM)	A/R	57	548478	WSHR,.641 1.188.04 YS FLT	5
18	520239	SHIM .010 (.25MM)	A/R	58	548482	PLUG,EXPANSION 1.25 YS	4
19	520240	SHIM .020 (.51MM)	A/R	59	548597	LOCKNUT, UNI-TORQUE	2
20	520671.7	GEARCASE	1	60	548726	SCRW,.25-20.75 YS RS	4
21	521941	SPACER,1.00 1.12.66	1	61	4139759	SPACER-GEAR	1
22	548954	SEAL-OIL 1.38 SHAFT	2	62	307665	NUT .75-16 YS HX JAM	2
23	64006-03	WSHR, 3/8 HELICAL LOCK	1	63	309799	LWSHR .75 ZS SHKPRF	2
24	548931	PLUG,EXPANSION 1.75 YS	1	64	520722	SPACER	2
25	64164-28	KEY-#808 WOODRUFF	4	65	520723	SHAFT	2
26	4139758	GEAR	1	66	545626	SPROCKET AY	1
27	516162	SPROCKET, CLUTCH	1	67	547398	CHAIN AY #50 RLR	1
28	516172	CLUTCH	1	68	547408.7	WHEEL AY 12IN	2
29	516173	SHAFT	1		(USED ON 7448441H & 744944C ONLY)		
30	544215	CAGE ASSY,BEARING	1		547424.7	WHEEL AY 18IN	
	(INCLUDES ITEMS 31, 32)				(USED ON 744845H & 744945C ONLY)		
31	548131	BRG,BALL 1.00 2.00.50 "DA"	1	69	64164-10	KEY 1/4X1-1/4 SQ	2
32	548326	RING,INT RET 2.21OD.06	1	70	548952	RING INTERNAL RETAINING	2
33	548327	RING-LOCK	1	71	548953	BRG-BALL 1.38 2.83.67	2
34	544217.7	SHIFTER AY	1	72	4117675	LINK-#50 CONNECTOR	A/R
35	545050	CAGE AY,BEARING	1	73	548480	LINK-HALF	A/R
	(INCLUDES ITEM 36)						
36	814474	CUP,TPRD RLR BRG	1				
37	516160	SPROCKET	1				
38	521253	SHAFT-ECCENTRIC	1				
39	548336	LOCK RING (KC)	1				

SIDE ARMS, PITMAN ARMS AND HANDLES

JR SOD CUTTER

FIGURE 4



SIDE ARMS, PITMAN ARMS AND HANDLES

JR SOD CUTTER

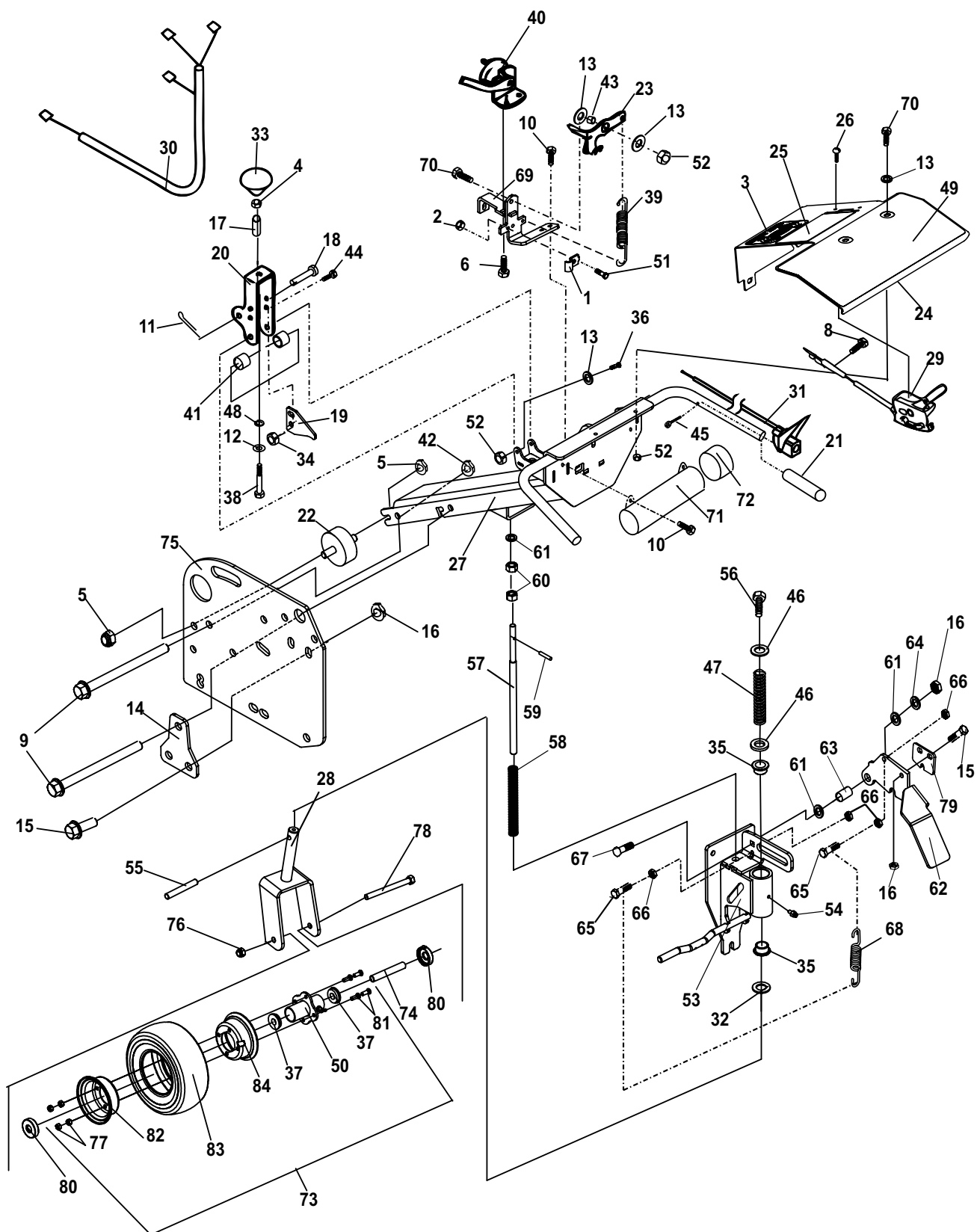
FIGURE 4

ITEM	PART NO.	DESCRIPTION	QTY	ITEM	PART NO.	DESCRIPTION	QTY
1	64123-50	BOLT-HEX 3/8-16X1	2	34	545449.7	HANDLE AY	1
2	64123-107	BOLT-HEX 5/16-18X7/8	4	35	524549	ROD,TIE LOWER	1
3	64123-61	BLT-HEX 5/16-18X1-3/4	2	36	524550	ROD,TIE UPPER	1
4	328018	SCRW,.44-14 1.12 YS HX	6	37	64268-05	NUT FL NYLCK 1/2-13	2
5	515011	SCRW,.31-24 1.00 ZS HX	6	38	64025-03	NUT-HEX 5/16-24	6
6	515729	BUSHING	2	39	64006-16	LOCKWSHR-5/16 HI-COLLAR	2
7	516067	BUSH,STL.515X.874X1.015	2	40	64151-33	NUT-HEX 1/2-20 TOP LCK JAM	2
8	4135868-02	COVER,HANDLE YELLOW	1	41	800513	SCRW-SCKT 5/16-18-1-1/4	2
9	521435.7	SHAFT, LOWER	1	42	548056	NUT,.44-14 YS HX UNITORQ	6
10	4164446	PLATE-ADJUSTMENT STOP	1	43	64268-02	NUT-FL NYLN LCK 5/16-18	2
11	4114727	KNOB-SPEED CONTROL	1	44	64268-03	NUT-FL NYLN LCK 3/8-16	5
12	4175983	LABEL-CUT DEPTH	1	45	64163-99	WSHR-.510X1.31X.179	5
13	4164384.2	BRACKET, PIVOT	2	46	64006-02	LOCKWSHR-HELICAL 5/16	6
14	4164681	S-ECCENTRIC ASSY (INCLUDES ITEMS 15 & 16)	2	47	4113281	WASHER, SPCL .531 SQ	2
				48	4132717.7 546182.7	BLADE-SOD CUTTER, 18" BLADE-SOD CUTTER 12"	1
15	521424	RING	1	49	4164033	LABEL-CHF VERT	2
16	548814	RACE, INNER	1	50	2308066	WASHER-FIBER	1
17	545437	ARM AY (INCLUDES ITEMS 18-22)	2	51	64163-31	WSHR-15-64X1X12GA	1
18	64197-025	BLT-TDFM 1/4-20X5/8	2	52	64018-7	BLT-CRG 3/8-16X1/1/4	1
19	521425	PLATE - COVER	1	53	64268-03	NUT-FL NYLON 3/8-16	1
20	521427	ARM, PITMAN	1	54	4164570.7	WLDMT-HANDLE	1
21	521428	BRG,NDL 1.25 1.62 1.06	1	55	4163983	LABEL-CUT DEPTH	1
22	85010-03	FITTING (KC)	2	56	64141-6	NUT-WLF 5/16-18	4
23	545443.7	BRACKET AY (INCLUDES ITEMS 24, 25)	2	57	4135868-01	COVER,HANDLE GREEN	1
				58	4135868	COVER,HANDLE BLACK	1
24	521429	BRONZE BEARING	1				
25	85010N	ZERK-GREASE	1				
26	4176190	ARM AY, SIDE (INCLUDES ITEMS 27-31, 49)	2				
27	521436	BALL BEARING	1				
28	521438	GREASE SEAL	1				
29	548138	BRG,NDL.88 1.12 1.00	2				
30	548340	LOCK RING (KC)	2				
31	85010N	ZERK-1/4 28 STR. SFTH	4				
32	4164541.7	WLDMT-LEVER	1				
33	4176171	S-H-FRAME W/DECAL (INCLUDES ITEM 55)	1				

HANDLEBAR ASSEMBLY

JR SOD CUTTER

FIGURE 5



JR SOD CUTTER

HANDLEBAR ASSEMBLY

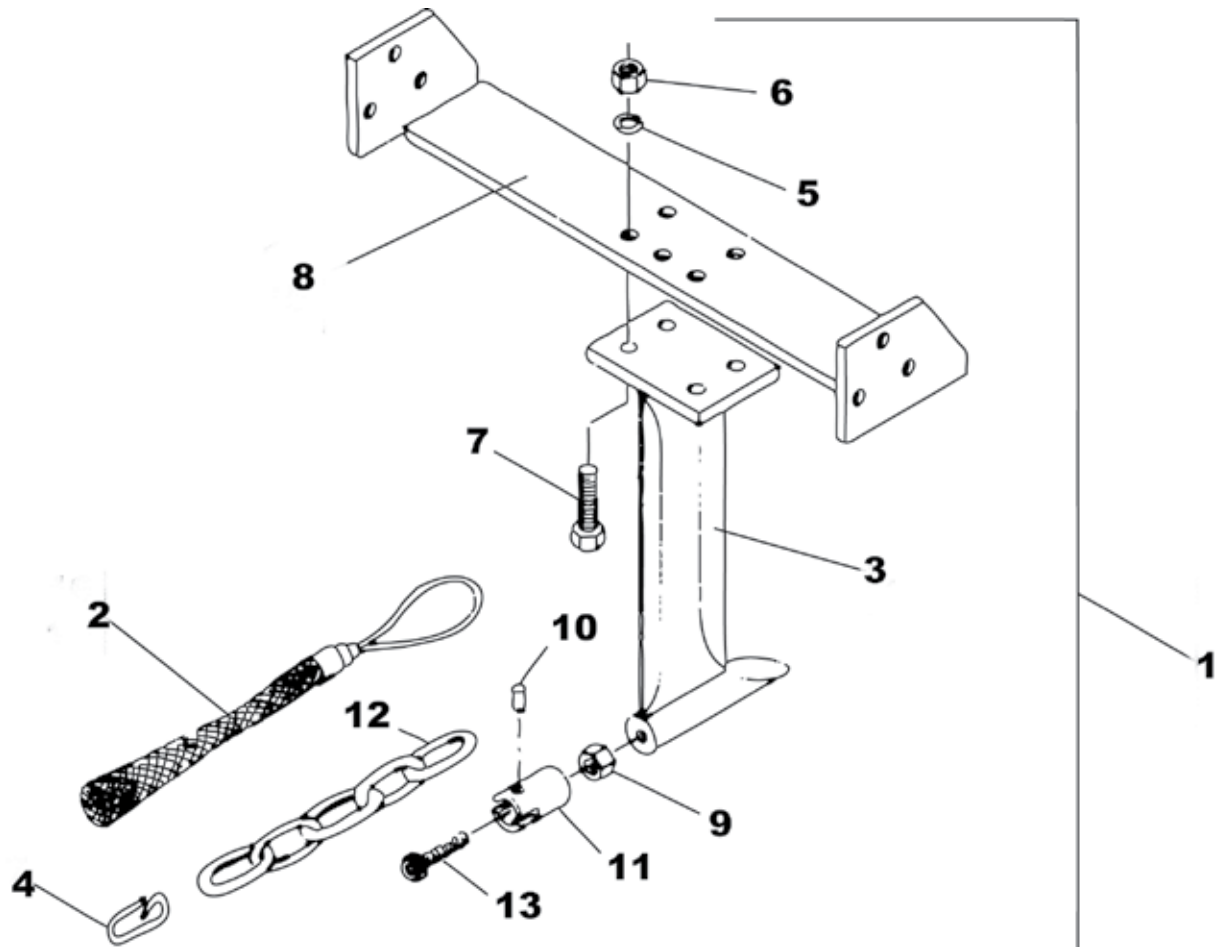
FIGURE 5

ITEM	PART NO.	DESCRIPTION	QTY	ITEM	PART NO.	DESCRIPTION	QTY
1	111898	CLAMP,CABLE	1	40	806800	SWITCH,STOP LIGHT	1
2	64025-15	NUT-HEX #10-24 KEPS	1	41	524577	BUSHING, .328X.63X.41	2
3	4171082	LABEL-RYAN EASY-STEER	1	42	64151-18	NUT-CENTER LOCK 3/8-16	2
4	64025-04	NUT-HEX 3/8-24	1	43	814585	BUSHING	1
5	64141-4	NUT-WLF 3/8-16	8	44	64139-06	BOLT-WLH 5/16-18X5/8	2
6	64197-015	BLT-TDFM 10-32X1/2 TORX	2	45	800896	SCRW-SET 1/4-20X3/8	1
7*	4175985	LABEL-VIBRATION	1	46	64163-84	WSHR-1.015 X 1.75 X.125	2
8	64197-023	BLT-TDFM 10-32 X 3/4	1	47	4164551	SPRING-COMP,1.06X1.28X1	1
(USED FOR BRIGGS THROTTLE CABLE CLAMP)				48	64163-61	WSHR .81X.406X16GA	1
9	64123-266	BLT-HEX 3/8-16X7	2	49	4176011	LABEL-INSTRUCTION, JRS	1
10	64197-025	BLT-TDFM 1/4-20X5/8	4	50	2722680	HUB-9" WHEEL W/BRGS	1
11	64140-1	COTTER PIN-1/8X1	1	51	64152-46	SCREW-SLT HH 10-24X1/2	1
12	64006-03	WSHR, 3/8 HELICAL LOCK	1	52	64229-01	NUT-NYLON 1/4-20	7
13	64163-03	WSHR-.256IDX62ODX18GA.	8	53	4175997	S-WLDMT,REAR WHL ASSY	1
14	4164473.2	PLATE-BOLT CENTERING	2	(INCLUDES ITEMS 35 & 54)			
15	64123-50	BLT-HEX 3/8-16X1	6	54	85010N	ZERK-1/4-28 SEKF THRD	1
16	64268-03	NUT-FL NYLON LOCK 3/8-16	7	55	4164454	ROD-CASTER LIMITER	1
17	516544	BUSHING (PLATING)	1	56	64123-15	BLT-HEX 3/8-16X3/4	1
18	64188-64	PIN-CLEVIS 3/8 X 1.75	1	57	4164456	HANDLE-ROD SUPPORT	1
19	4164519.7	FLAT-SWITCH ACTIVATION	1	58	4164606	SPRING-COMP, .75x11.75	1
20	522585.7	HANDLE,CONTROL	1	59	64176-11	ROLL PIN-3/16 X 1	1
21	522727	GRIP,HANDLE	2	60	64025-19	NUT-HEX 1/2-13	2
22	C100546	ISOLATOR-3/4X2 W/2 STUDS	4	61	64163-67	WSHR-.516X1X12GA	3
23	524472	ARM, PIVOT (PLATING)	1	62	4164779.7	BRKT-LOCKING, STRAIGHT	1
24	4176192	S-CONTROL PANEL	1	63	518438	BUSHING-STL .39X.5X.359	1
(INCLUDES ITEMS 3, 25, 49)				64	64163-31	WSHR-25/64X1X1/2	1
25	4164032	LABEL-CONTROL PANEL	1	65	64123-07	BLT-HEX 1/4-20X1-1/2	2
26	64152-18	SCR 8-32 X 3/8 S-TAP	2	66	64025-01	NUT-HEX 1/4-20	4
27	4164418.7	WLDMT-HANDLE, JRSOD	1	67	64018-7	BLT-CRG 3/8-16X1-1/4	1
28	4164579.7	WLDMT-YOKE	1	68	4164627	SPRING-EXTENSION	1
29	540326	CONTROL ASSY,THROTTLE	1	69	4164475.7	BRKT-MOUNTING	1
(USED ON HONDA MODELS ONLY)				70	64123-89	BLT-HEX 1/4-20X3/4	5
	4163186-01	CONTROL, THROTTLE 38.5	1	71	4129802	TUBE-DOCUMENT	1
(USED ON B & S MODELS ONLY)				72	38061A	CAP-VINYL	1
30	540229	WIRE AY	1	73	2722681	ASY-9"WHEEL	1
(USED ON HONDA MODELS ONLY)				(INCLUDES ITEMS 37,50, 77, 81-84)			
	4163183	HARNESS-JR SOD B&S	1	74	2722230-04	SPANNER	1
(USED ON B & S MODELS ONLY)				75	4164384.2	BRACKET, PIVOT	2
31	540232	CONTROL AY, KILL SWITCH	1	76	64229-05	LOCKNUT-NYLON 1/2-13	1
32	64163-07	WSHR 1-1/32X1-3/4X1/4	1	77	64141-1	NUT-WLF 5/16-24	4
33	4175986	KNOB	1	78	64123-166	BLT-HEX 1/2-13 X 5-1/2	1
34	64141-6	NUT, 5/16-18	2	79	4164780.7	BRACKET-ADJUSTER	1
35	4129801	BSHNG-FLNGD SINTRD IRN	2	80	2722591	SPACER-3/4 BEARING	2
36	64189-20	BLT-HEX SOC 1/4-20X5/8	2	81	64123-01	BLT-HEX 5/16-24X3/4	4
37	2722682	BEARING-9IN WHEEL	2	82	2720645	S-WHL HALF, VALVE SD	1
38	64123-270	BLT-HEX 3/8-24X2-1/4	1	83	38504	S-TIRE 9X3.5-4 SMOOTH	1
39	805421	SPRING,EXTENSION	1		*38505	S-TUBE-9x3.50-4	1
				84	2720644	S-WHEEL HALF	1
				*NOT ILLUSTRATED			

MOLE BLADE KIT

JR SOD CUTTER

FIGURE 6



JR SOD CUTTER

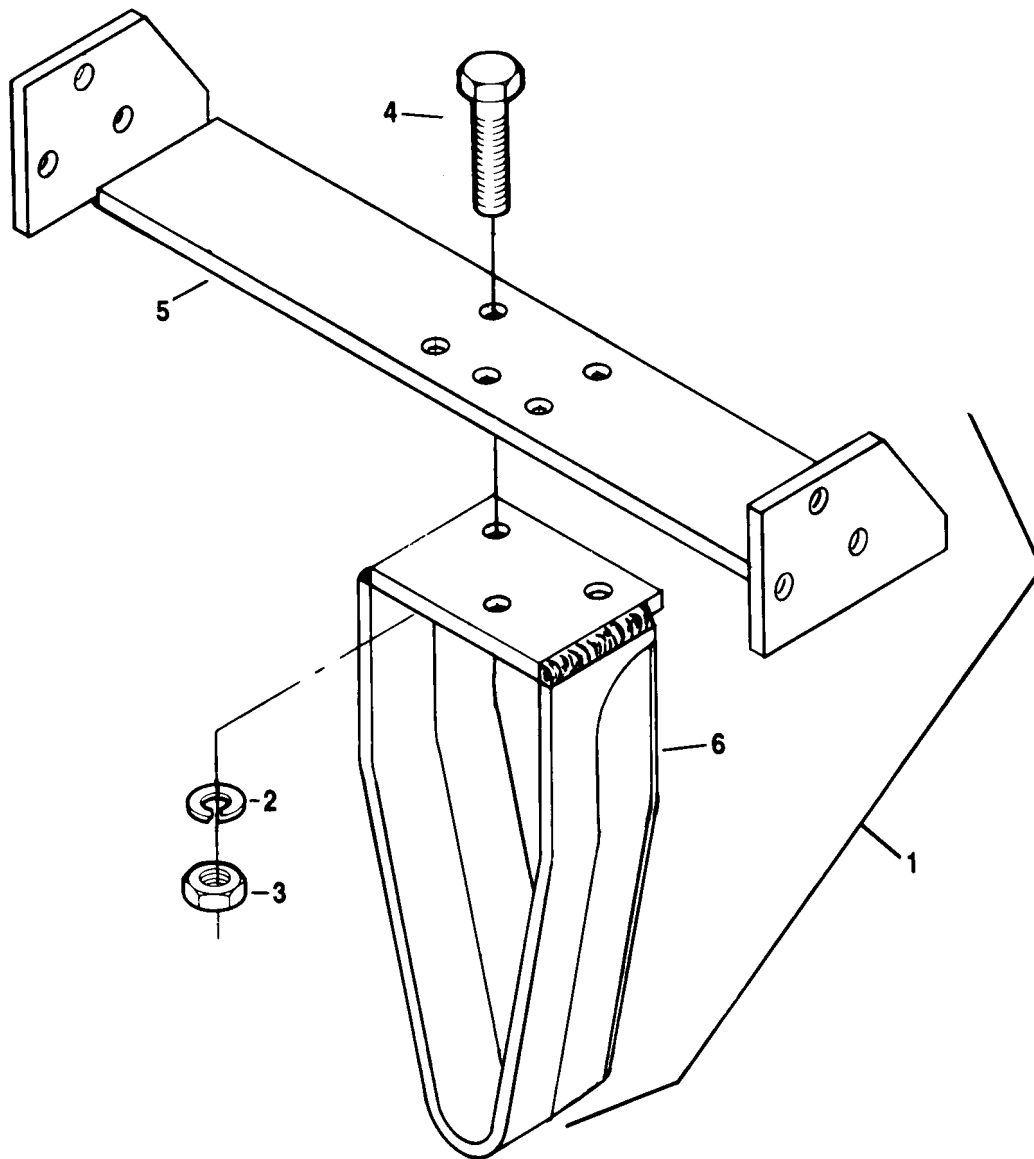
FIGURE 6

ITEM	PART NO.	DESCRIPTION	QTY	ITEM	PART NO.	DESCRIPTION	QTY
1	544670	MOLE BLADE KIT- 3/4"	1				
	544673	MOLE BLADE KIT - 1-1/4"					
2	548613	KELLEM GRIP 3/4"	1				
		(USED ON 544670)					
	548616	KELLEM GRIP 1-1/4"					
		(USED ON 544673)					
3	544692	BLADE AY, MOLE 1-1/4"	1				
		(INCLUDES ITEMS 9-13)					
	544689	BLADE AY, MOLE 3/4"	1				
		(INCLUDES ITEMS 9-13)					
4	808222	LINK,CHAIN CONN	1				
5	64006-03	WSHR, 3/8 HELICAL LOCK	4				
6	64025-04	NUT-3/8-24 HEX	4				
7	64123-21	BLT-HEX 3/8-24X1-1/4	4				
8	546089.7	BRACKET,MOLE BLADE	1				
9	64025-02	NUT-HEX 5/16-18	1				
10	316943	PIN,SPIROL.250.750 PS	1				
11	515691	SWIVEL	1				
12	547052	CHAIN AY	1				
13	800513	SCREW-SCKT 5/16-18-1-1/4	1				

TRENCHING BLADE

JR SOD CUTTER

FIGURE 7



JR SOD CUTTER

TRENCHING BLADE

FIGURE 7

ITEM	PART NO.	DESCRIPTION	QTY	ITEM	PART NO.	DESCRIPTION	QTY
1	546199	BLADE KIT (INCLUDES ITEMS 2-6) * MODEL 744844H, ONLY	1				
2	64006-03	WSHR, 3/8 HELICAL LOCK	3				
3	64025-04	NUT-3/8-24 HEX	3				
4	64123-21	BLT-HEX 3/8-24X1-1/4	3				
5	546089	BRACKET,12"-MOLE BLADE	1				
6	546198	BLADE AY,TRENCHING	1				

*NOTE: The trenching blade set includes parts for installation on earlier model sodcutters. Discard any parts not required for installation on model 744844C and newer.

SCHILLER GROUNDS CARE, INC.
ONE BOB-CAT LANE
P.O. BOX 469
JOHNSON CREEK, WI 53038
920-699-2000
www.schillergc.com



©Schiller Grounds Care, Inc. 2010