



One BOB-CAT Lane, P.O. Box 469  
Johnson Creek, WI 53038 U.S.A.  
(920) 699 2000  
Fax: (920) 699 6836

## Service Bulletin

**Date:** July 11, 2019

**Bulletin No:** JC-19-07

**Product Type:** 5000, 6000 and 7000 BOB-CAT riders

**Customer Issue:** Deck drops down on one side.

**Cause:** Significantly impacting the anti-scalp roller multiple times into a stationary object. This results in separating the pull arm bearing from its housing.

**Action Required:** Install Pull Arm Bearing reinforcement kit **4177670**.

**NOTE:** When installing new bearings, you will need to verify if the pull arms need to be shimmed to maintain the deck's free floating action. See bulletin JC-19-08 for this process.

View video at: <http://warranty.schillergepro.com/videos/BOB-CAT-Mower-Shim-Pull-Arms-How-To.html>

☒ Order kit through normal parts channel

**Products Involved:** This will be applicable to units before the below serial numbers:

MODEL	SERIAL	MODEL	SERIAL	MODEL	SERIAL
9995008	9995008 <b>0227</b>	9996003	9996003 <b>0291</b>	9997001AU	9997001 <b>90112</b>
9995009	9995009 <b>0221</b>	9996003AU	9996003 <b>90112</b>	9997002	9997002 <b>0215</b>
9995010	9995010 <b>0100</b>	9996004	9996004 <b>0519</b>	9997003	9997003 <b>0145</b>
9995011	9995011 <b>0170</b>	9996005	9996005 <b>0341</b>	9997004	9997004 <b>0197</b>
9995012	9995012 <b>0157</b>	9996005AU	9996005 <b>90117</b>	9997004AU	9997004 <b>90107</b>
9996001	9996001 <b>0130</b>	9996006	9996006 <b>0203</b>		
9996002	9996002 <b>0160</b>	9997001	9997001 <b>0498</b>		

**Warranty:** Fix as fail only. You may claim up to .5 hour of labor and parts for units covered under this bulletin. Please file warranty using Service Bulletin Number JC-19-07 with one unit per claim.

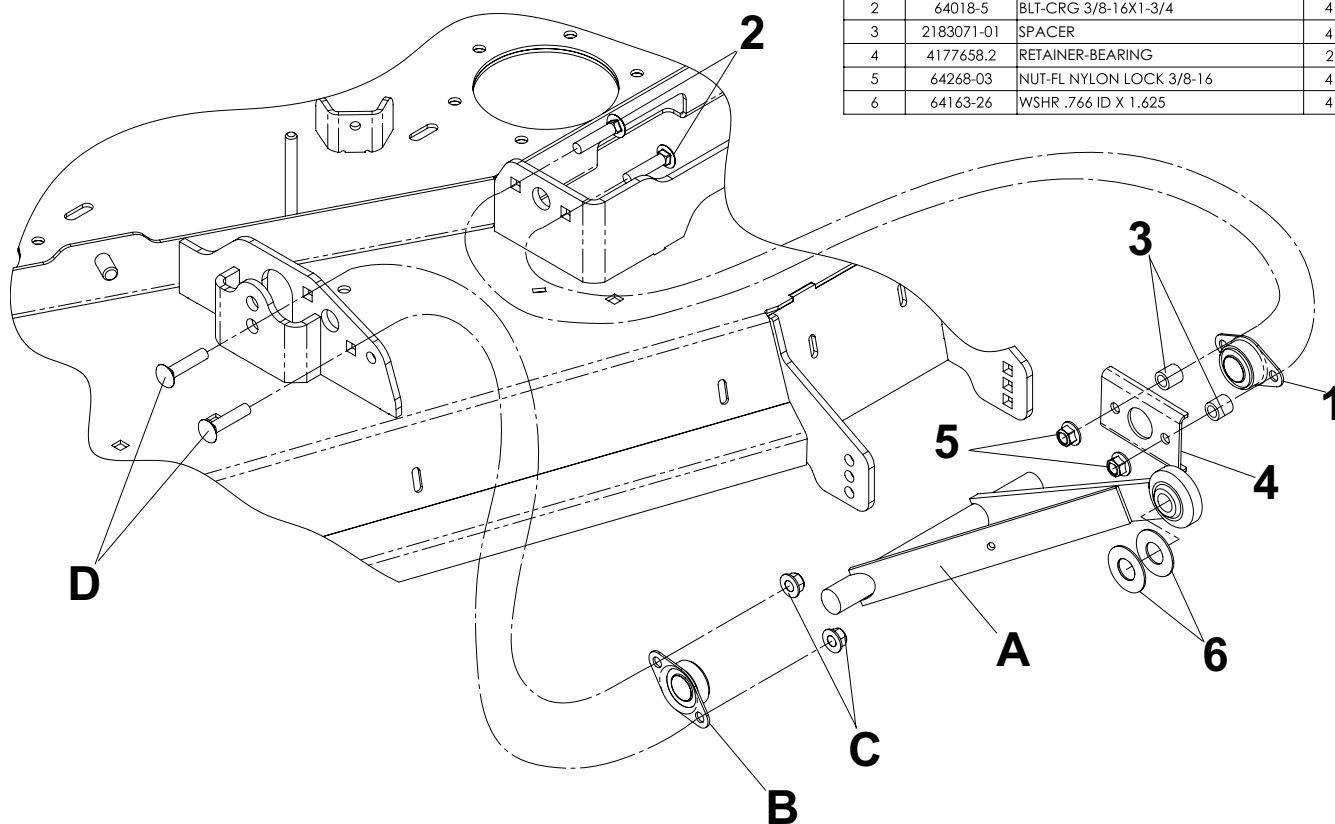
If you have any questions, please contact our Customer Service Department at 920-699-2000. This bulletin is relevant to the departments checked below. Please circulate as appropriate.

SERVICE ☒ WARRANTY ☒ SALES ☐ PARTS ☒

This instruction sheet covers the installation of the bearing retainer kit onto 5000, 6000 and 7000 series ProCat and Predator Pro mowers.

1. Remove hitch arm mounting bolt 5/8-18 x 2 1/2" (not shown) from the front mounting ball on both pullarms (**A**) and retain hardware. If pullarm ball shim washers were present, retain and note quantity and position. Remove bearing retaining lock nuts (**C**) and carriage bolt (**D**) from the outside of the hitch arm bearing and retain for later use. Remove the inner lock nuts and carriage bolts from the inner bearing and discard. Remove the pullarm (**A**) with bearings from the deck mounting. Remove and inspect the inner bearings for damage. Discard if damaged or not sure if damaged. Remove the outer bearings (**B**) and save for later use.
2. Assemble new bearing retainer (**4**) with short formed leg pointing out on the pullarm shaft on the inside bearing position (toward the inside of the machine). Install new bearing (**1**) on to shaft with mounting flange facing outward (away from pull arm). Reinstall the outside bearing (**B**) retained from Step 1 to the outside of the pullarm. Install pullarm with installed bearings and retainers into the pullarm deck mounting brackets. Align inside bearings and bearing retainer to deck mounting holes and install two 3/8-16x1 3/4" carriage bolts (**2**) from the outside inward through the bearing mounting flange. Install spacer (**3**) on both carriage bolts, then slide the bolts through the retainer plate (**4**) making sure that the spacers are trapped between the bearing mounting flange and the retainer plate. Install two 3/8-16 flange lock nuts (**5**) on to the carriage bolts and leave loose for now. Install bolts (**D**) removed in Step 1 through the deck mounting holes and then through the bearing. Install nuts (**C**) removed in Step 1. Tighten the nuts to 30 ft. lbs. After all four nuts are torqued, check pullarm for side to side free play of about 1/8". The shaft of the pullarm should easily move through the bearings.

ITEM	PART NO	DESCRIPTION	QTY
1	2188145-02	BEARING-.875ID BRZ SELF ALIGN	2
2	64018-5	BLT-CRG 3/8-16X1-3/4	4
3	2183071-01	SPACER	4
4	4177658.2	RETAINER-BEARING	2
5	64268-03	NUT-FL NYLON LOCK 3/8-16	4
6	64163-26	WSHR .766 ID X 1.625	4



3. Repeat assembly process for second pullarm. Image below shows one correctly installed.



4. Pullarm Shimming: If you found pullarm shims in step 1 when disassembling, please reinstall shims back in to same location. If no shims were present you should check to see if shims are required. Raise both pullarms up to ball frame mounting. Pull or push pullarm on one side so that pullarm on the opposite side hits against the pullarm ball mounting and bottoms out. On the loose side of the deck check the gap between the pullarm ball and the mounting bracket. Use the washers (6) included in the kit and stack them up to fill the gap between pullarm mounting and the pullarm ball. Once you know how many washers you need to space the pullarm and fill the gap, split them equally and install split quantity for each pullarm. Equally spacing both pullarms is important to insure proper pullarm alignment and create correct side to side deck free play. To check the deck side to side free play make sure the deck is suspended off of the ground. Physically grab the deck on one of the sides and push and pull. You should see and feel about 1/16" to 1/8" of free play. This free play insures proper deck floatation and reduces lift effort of the deck. If you don't understand this step, you can watch a video which shows how to shim the pullarms.
5. You can view a video that will help you understand the shimming process for the pullarms by visiting the Schillergcpro.com site at: [www://schillergcpro.com/on-line-training/BOB-CAT Shim Pull Arms How-to](http://www://schillergcpro.com/on-line-training/BOB-CAT%20Shim%20Pull%20Arms%20How-to)