

INTRODUCTION: This instruction sheet covers the installation of the Gauge Wheel Kit (75-70510) for blades.

NOTE:

Read all instructions thoroughly before beginning installation. Upon completion of the installation, place this instruction sheet with operator's manual for the unit. Failure to follow warnings and instructions could result in injury to the operator or bystanders, or damage to the equipment

INSTALLATION INSTRUCTIONS

1. Remove the skid shoes from both ends of the blade. (See Fig. 1 in Operator's Manual).
2. Install right and left caster mounts onto the blade using the same bolts that mounted the skid shoes.

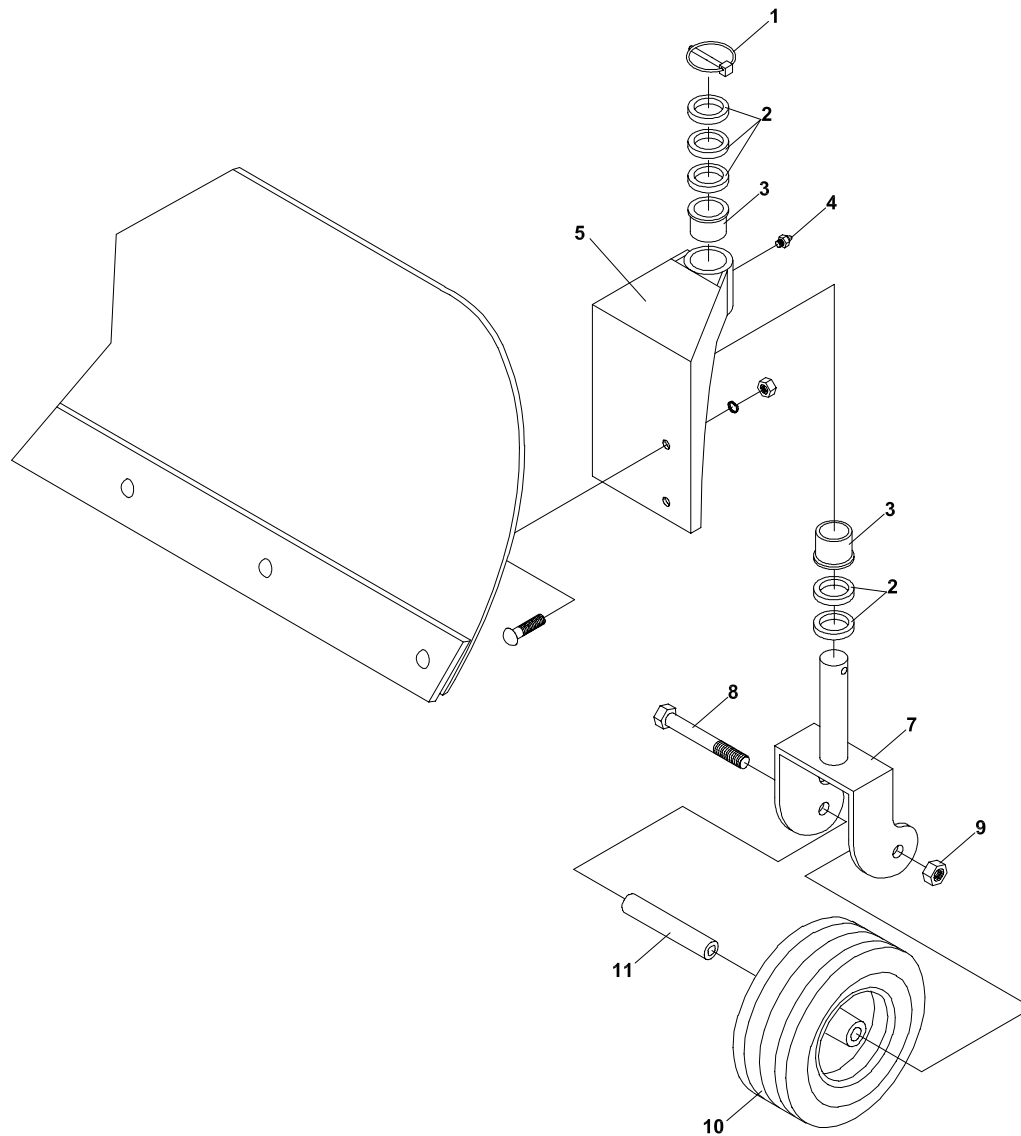
NOTE: The caster mounts are offset and should be mounted with the wheels offset towards the center of the blade.

3. Adjust the trip springs. Because the caster wheels are set back farther than the skid shoes, the blade will trip easier with the caster wheels installed. To make the blade trip approximately the same, the spring adjuster bolts (See Fig. 1 in Operator's Manual) should be tightened so there is approximately 2-3/4" between the top of the mounting tab and the end of the adjuster bolts.

⚠ WARNING

If the caster wheels are removed and the skid shoes are re-installed, the spring adjusters need to be reset for use with the skid shoes. See the assembly instructions for the correct setting.

4. Adjust the caster wheels to the desired height. The height can be adjusted by sliding the caster wheel mount up or down in the slots on the blade or by moving spacers on the caster yoke shaft.
5. Check and tighten all hardware and grease the caster pivots and wheel bearings.
The caster pivots and wheel bearings should be greased every 25 hours of operation.



KIT PARTS LIST

ITEM	PART NO.	DESCRIPTION	QTY
1	03-015	CLIP, CAT. 0	2
2	6112057	SPACER, HEIGHT ADJ	10
3	85-B34	BUSHING, FLNGD BRNZE	4
4	29-010	S/B GREASE FITTING	2
5	6101066.7	MOUNT, CASTER RH	1
6 *	6101067.7	MOUNT, CASTER LH	1
7	6101065.7	YOKE, CASTER	2
8	90-0836	BOLT, 1/2 UNC x 4-1/2	2
9	64141-13	NUT WLF 1/2-13	2
10	53-181	WHEEL, 6.25 X 3.00	2
11	6101062	AXLE, CASTER WHEEL	2
12 *	19-241	INST SHT, WHEEL KIT	1

* NOT ILLUSTRATED