

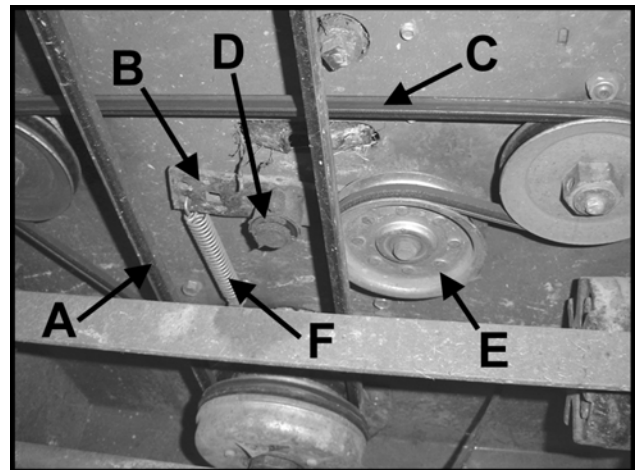
INTRODUCTION: This instruction sheet covers the installation of the Pump Idler Upgrade Kit (970299) for the ZT2 series.

TOOLS REQUIRED

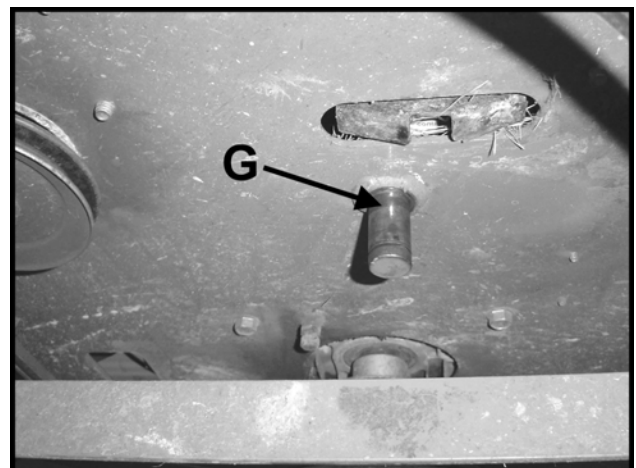
- Small hand grinder or die grinder with cut off wheel.
- Cutting Torch (optional).
- 3/8, and or 1/2" ratchet handle, extensions.
- 1/2", 3/8", 1", 16mm sockets.
- 1/2", 9/16", 15/16" wrenches.
- Torque wrench.
- Screwdriver.
- Hammer.
- Grease.
- Red (high strength) thread locking compound.

NOTE: All references below to the "right" or "left" are with respect to an operator at the controls.
Parts indicated with a letter are existing, parts supplied with kit are represented with the number corresponding to the parts list located on page 2.

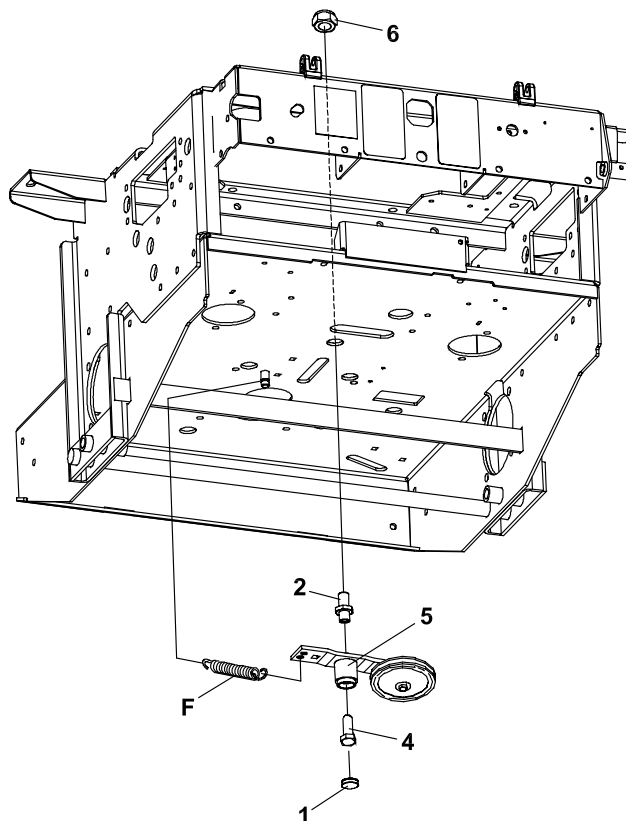
- 1) Disconnect the battery.
- 2) Support the unit on jack stands or other suitable means.
- 3) Remove the deck drive belt **A** to get clear access.
- 4) Insert a 3/8" drive extension in the square hole in the pump drive idler arm **B**. Use a 3/8" ratchet handle to back the pump drive idler off and remove the pump drive belt **C**.
- 5) Remove the 'E' ring **D** securing the idler arm. Remove the idler arm. Transfer the idler pulley **E** and spring **F** from the old idler arm to the new one in the kit. Discard the old idler arm, 'E' ring and thrust washers.



- 6) Remove and discard the idler pivot post **G**. This may be done by cutting it off with a torch and or grinding the welds off. In either case take care to keep the mounting surface flat.



- 7) Install the new pivot post **2** in the locating hole for the old pin and secure with a 5/8-11 nylon-locking nut **6** provided.
- 8) Coat the pivot pin shaft with grease (to lubricate the seal.) Put a drop of red (high strength) thread locking compound on the M10x30 cap screw **4**. Slide the idler arm **5** on the post **2** and secure with the cap screw **4**. Torque the screw to 35-40 ftlbs.
- 9) Lubricate outside of end cap **1** with grease, and then install the end cap in the idler hub. It should be flush with the hub.
- 10) Connect the spring **F** to the anchor pin. Use the ratchet handle and extension to back off the idler and reinstall the pump drive belt **C**. Reinstall the deck drive belt **A**. Reconnect the battery and any other electrical connections. Lower the machine and put it back in service.



KIT PARTS LIST

ITEM	PART NO.	DESCRIPTION	QTY
1	4128002	END CAP-26 X 7	1
2	4128902	POST-IDLER PIVOT	1
3	4128903	I.S.-KIT-ZT2 PUMP IDLER	1
4	64270-01	BLT-MET HEX M10-1.5x30	1
5	4128923	S-ASSY-IDLER ARM PMP	1
6	64229-06	LOCKNUT, NYLON 5/8-11	1